



MIDWEST SURVEYS
 LOGGING - PERFORATING - CONSULTING SERVICES
 P.O. Box 68, Osawatomie, KS 66064
 913 / 755 - 2128

GAMMA RAY / NEUTRON / CCL

File No. _____

Company **McGown Drilling, Inc.**

Well **Randall No. 1-15-11**

Field **Mound City**

County **Linn** State **Kansas**

Location **2475' FNL & 1485' FWL
SW-SW-SE-NW**

Other Services **Perforate**

Sec 11 Twp 22s Rge 23e Elevation
 Permanent Datum **GL** K.B. NA
 Log Measured From **GL** D.F. NA
 Drilling Measured From **GL** G.L. 844'

Date **12-03-2013**

Run Number **One**

Depth Driller **522.0**

Depth Logger **503.2**

Bottom Logged Interval **502.2**

Top Log Interval **20.0**

Fluid Level **Full**

Fluid Type **Water**

Density / Viscosity **NA**

Salinity - PPM Cl **NA**

Max Recorded Temp **NA**

Estimated Cement Top **0.0**

Equipment No. **107** Location **Oswatomie**

Recorded By **Steve Mandisch**

Witnessed By **Chris McGown**

BORE-HOLE RECORD				CASING RECORD			
Run No.	BIT FROM	TO	SIZE	WGT.	FROM	TO	
One	9.875"	0.0	7.00"	17.0#	0.0	20.0	
Two	5.625"	20.0	2.875"	6.5#	0.0	505.5	

<<< Fold Here >>>

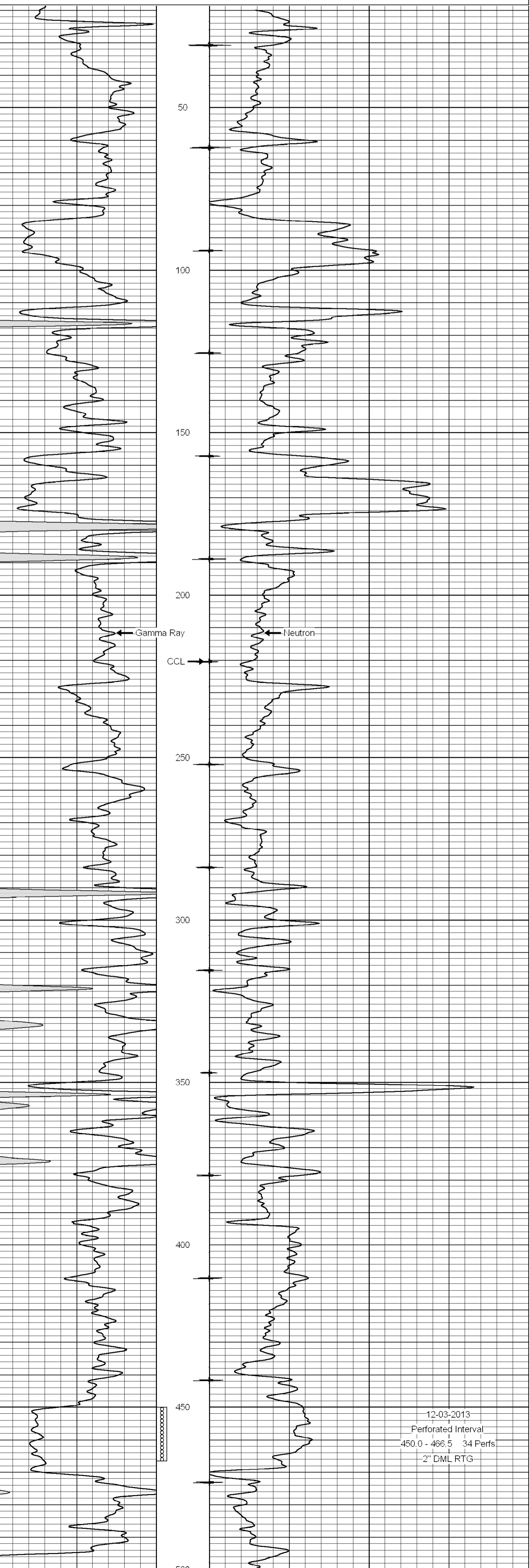
All interpretations are opinions based on inferences from electrical or other measurements and we cannot and do not guarantee the accuracy or correctness of any interpretation, and we shall not, except in the case of gross or willful negligence on our part, be liable or responsible for any loss, costs, damages, or expenses incurred or sustained by anyone resulting from any interpretation made by any of our officers, agents or employees. These interpretations are also subject to our general terms and conditions set out in our current Price Schedule.

Comments

Drilling Contractor :
 McGown Drilling, Inc.

Database File: randall15i-11.db
 Dataset Pathname: pass1
 Presentation Format: gr-n-ccl
 Dataset Creation: Tue Dec 03 13:16:37 2013 by Log SCH 111116
 Charted by: Depth in Feet scaled 1:240

0	Gamma Ray (cps)	150	-1 CCL 1	10	Neutron (cps)	2100
150	Gamma Ray (cps)	300				



12-03-2013
 Perforated Interval
 450.0 - 466.5 34 Perfs
 2" DML RTG

0	Gamma Ray (cps)	150	-1 CCL 1	10	Neutron (cps)	2100
150	Gamma Ray (cps)	300				