

**COMPLETION  
& PRODUCTION  
SERVICES CO.**

**COMPENSATED  
DENSITY / NEUTRON  
LOG**

Company MAI OIL OPERATIONS, INC.  
Well HERBER "A" #1  
Field WILDCAT  
County RUSSELL State KANSAS

Company MAI OIL OPERATIONS, INC.  
Well HERBER "A" #1  
Field WILDCAT  
County RUSSELL  
State KANSAS

Location: API #: 15-167-23910-0000  
2125' FNL & 1875' FWL  
NE - SW - SE - NW  
SEC 21 TWP 14S RGE 12W  
Permanent Datum GROUND LEVEL Elevation 1717  
Log Measured From KELLY BUSHING 8' A.G.L.  
Drilling Measured From KELLY BUSHING  
Other Services  
DILMEL  
Elevation  
K.B. 1725  
D.F. 1723  
G.L. 1717

Date	10/29/13		
Run Number	ONE		
Depth Driller	3274		
Depth Logger	3276		
Bottom Logged Interval	3252		
Top Log Interval	2100		
Casing Driller	349		
Casing Logger	348		
Bit Size	7.875		
Type Fluid in Hole	CHEMICAL MUD		
Density / Viscosity	9.5/59		
pH / Fluid Loss	10.5/10.4		
Source of Sample	FLOWLINE		
Rm @ Meas. Temp	0.70 @ 72F		
Rmf @ Meas. Temp	0.53 @ 72F		
Rmc @ Meas. Temp	0.84 @ 72F		
Source of Rmf / Rmc	MEASURED		
Rm @ BHT	.22 @ 109F		
Time Circulation Stopped	2 HOURS		
Time Logger on Bottom			
Maximum Recorded Temperature	109F		
Equipment Number	860		
Location	HAYS, KS.		
Recorded By	CAPPELLUCCI		
Witnessed By	JIM MUSGROVE		

<<< Fold Here >>>

All interpretations are opinions based on inferences from electrical or other measurements and we cannot and do not guarantee the accuracy or correctness of any interpretation, and we shall not, except in the case of gross or willful negligence on our part, be liable or responsible for any loss, costs, damages, or expenses incurred or sustained by anyone resulting from any interpretation made by any of our officers, agents or employees. These interpretations are also subject to our general terms and conditions set out in our current Price Schedule.

Comments

NABORS COMPLETION & PRODUCTION SERVICES  
785-628-6395  
THANK YOU FOR YOUR BUSINESS  
DIRECTIONS: BUNKER HILL - 2 EAST ON OLD 40 - 1 1/2 SOUTH - EAST & SOUTH INTO

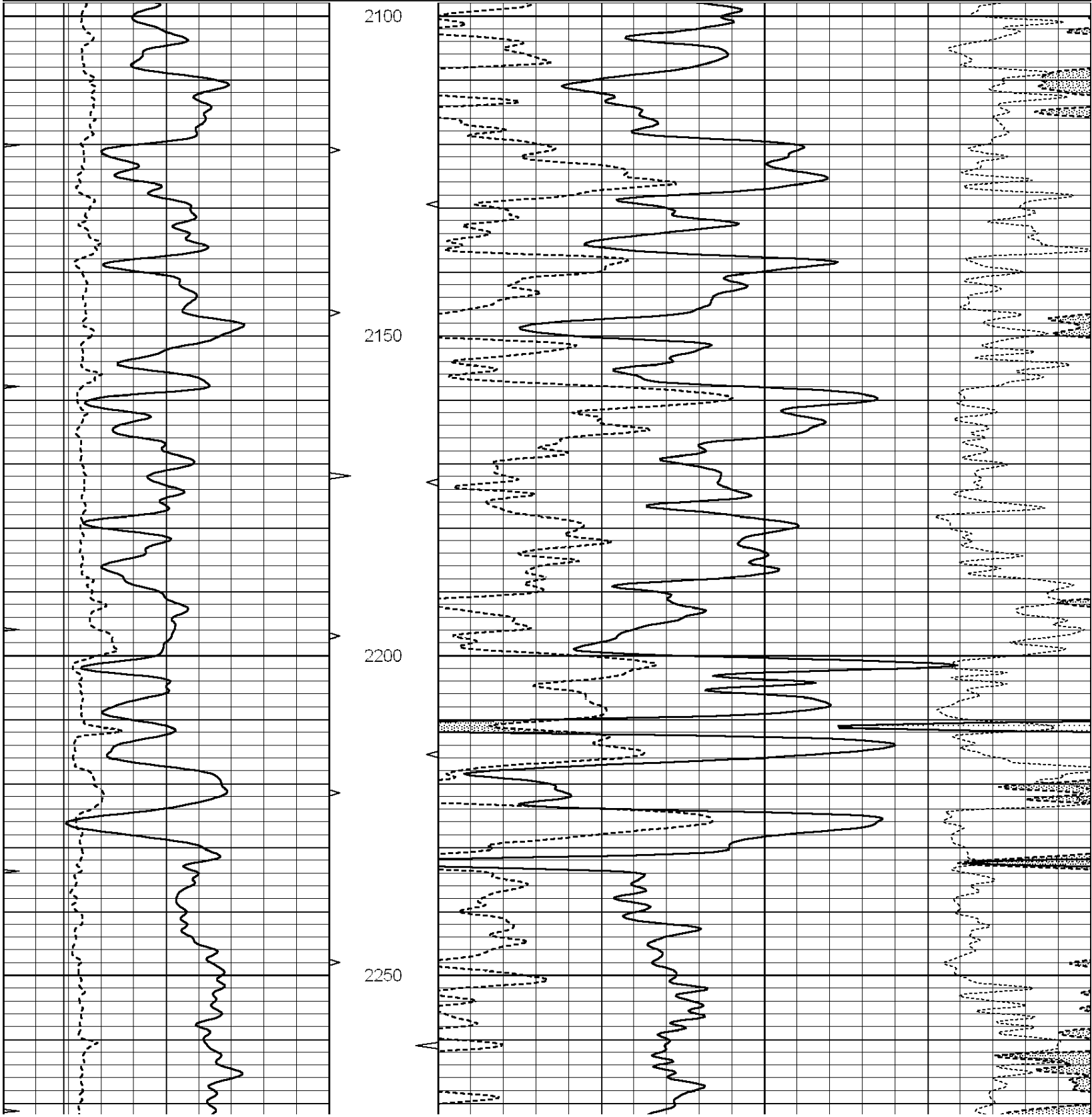


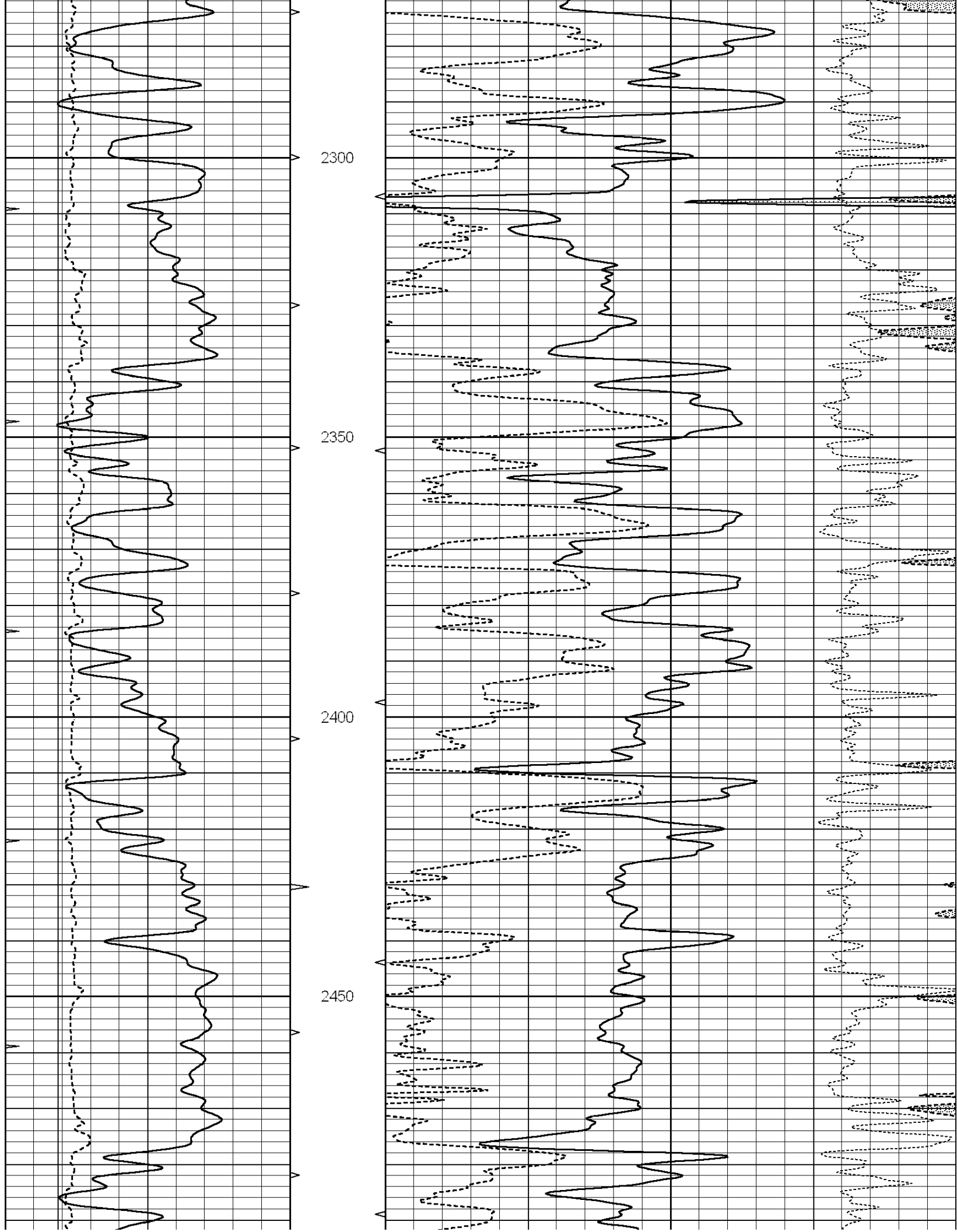
**COMPLETION  
& PRODUCTION**

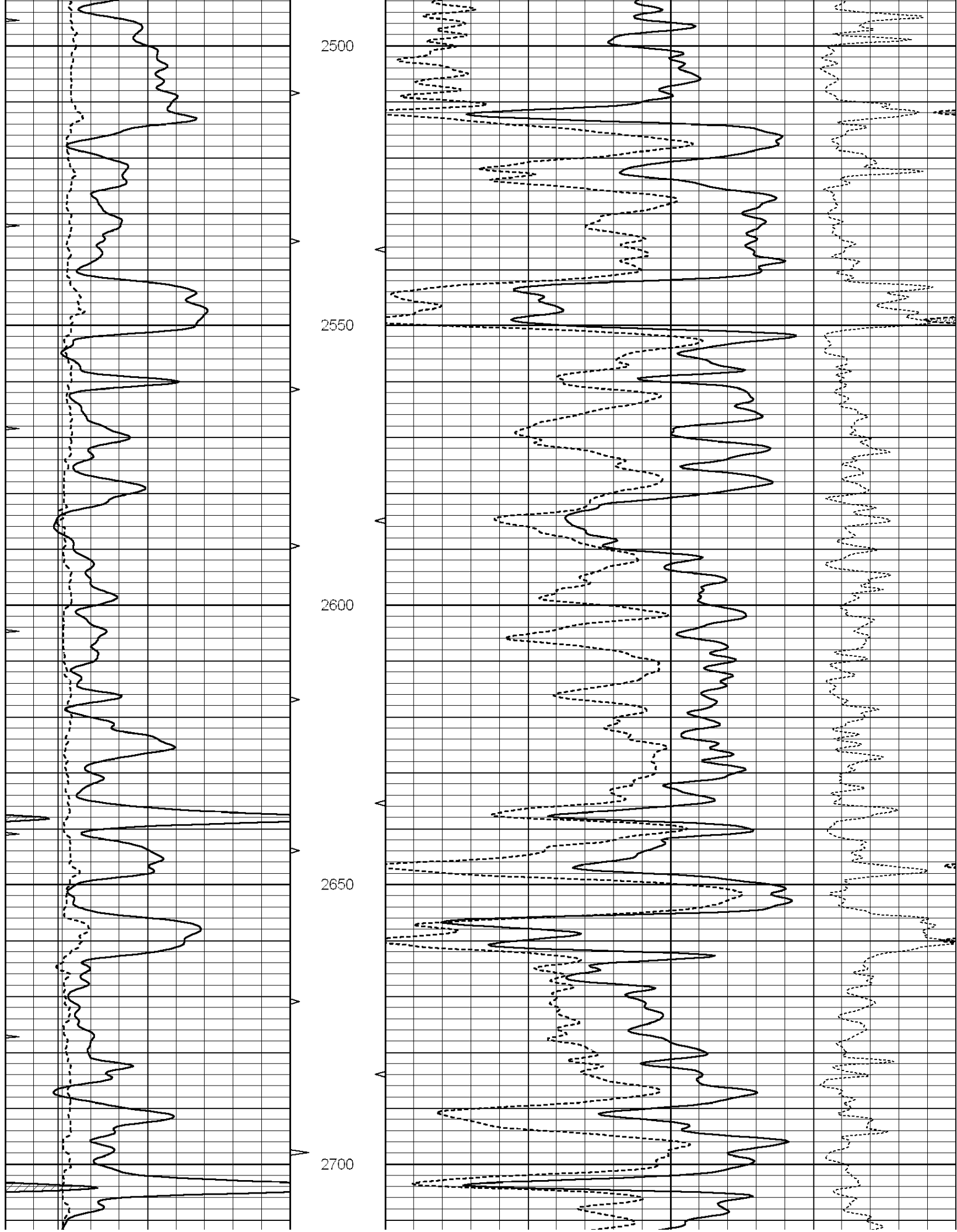
**MAIN SECTION**

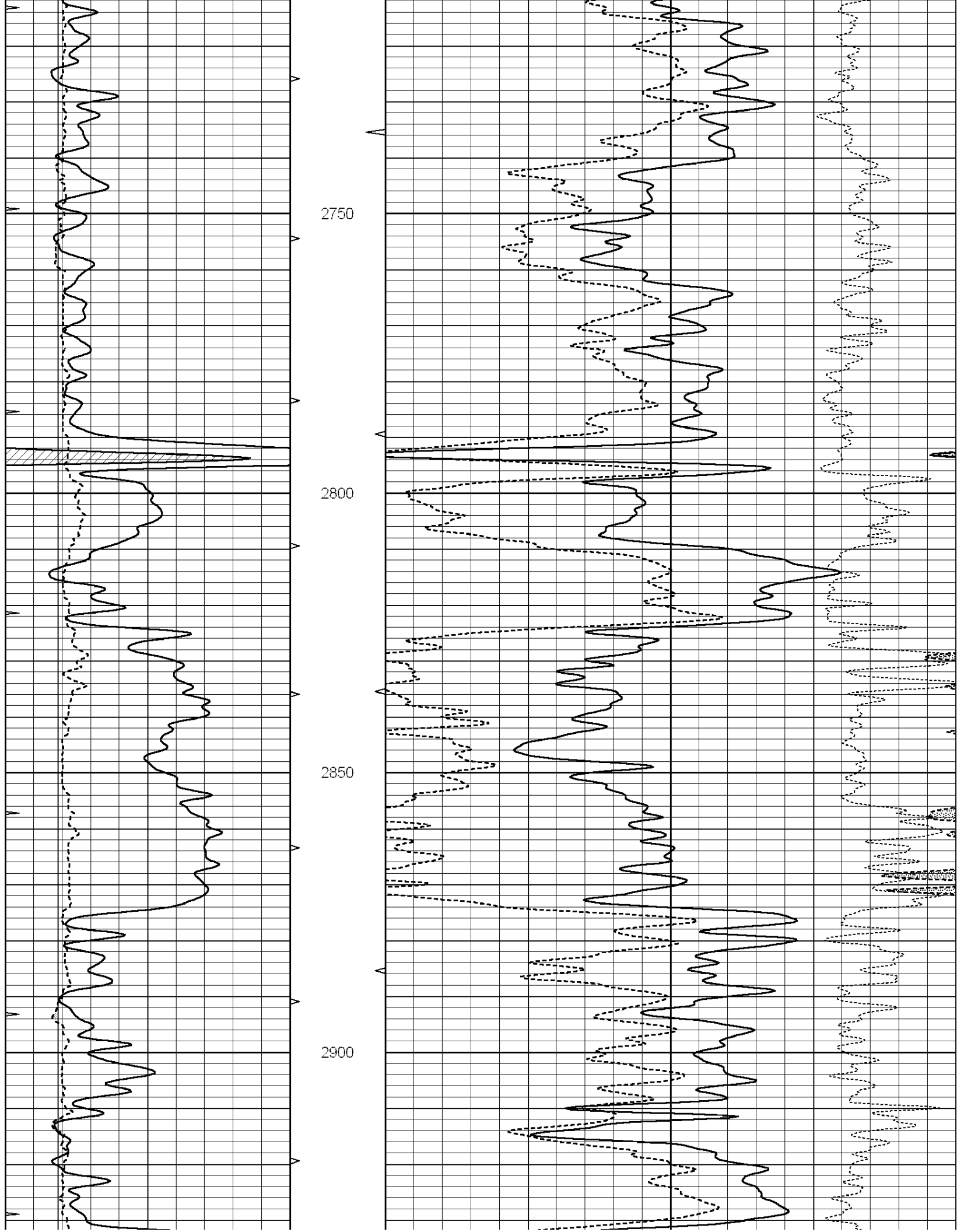
Database File: 012028ddn.db  
 Dataset Pathname: pass3.1  
 Presentation Format: \_den\_neu  
 Dataset Creation: Tue Oct 29 04:04:35 2013 by Calc Open-Cased 090629  
 Charted by: Depth in Feet scaled 1:240

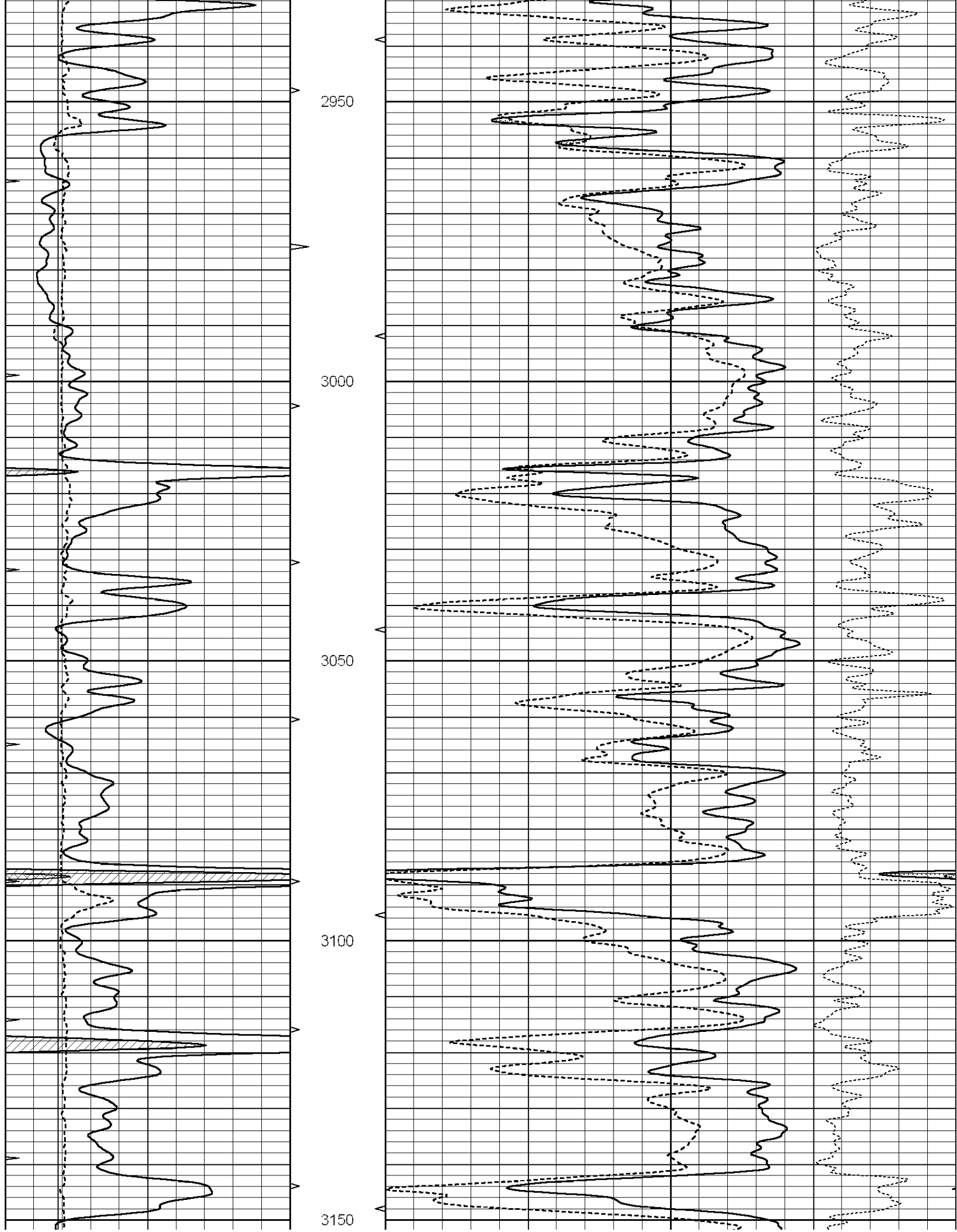
0	GAMMA RAY (GAPI)	150	ABHV	30	COMPENSATED DENSITY (pu)	-10
6	CALIPER (in)	16	10 (ft3)	0 30	COMPENSATED NEUTRON (pu)	-10
0	MINMK	20	TBHV		-0.25 CORRECTION (g/cc)	0.25
			0 (ft3)	10		

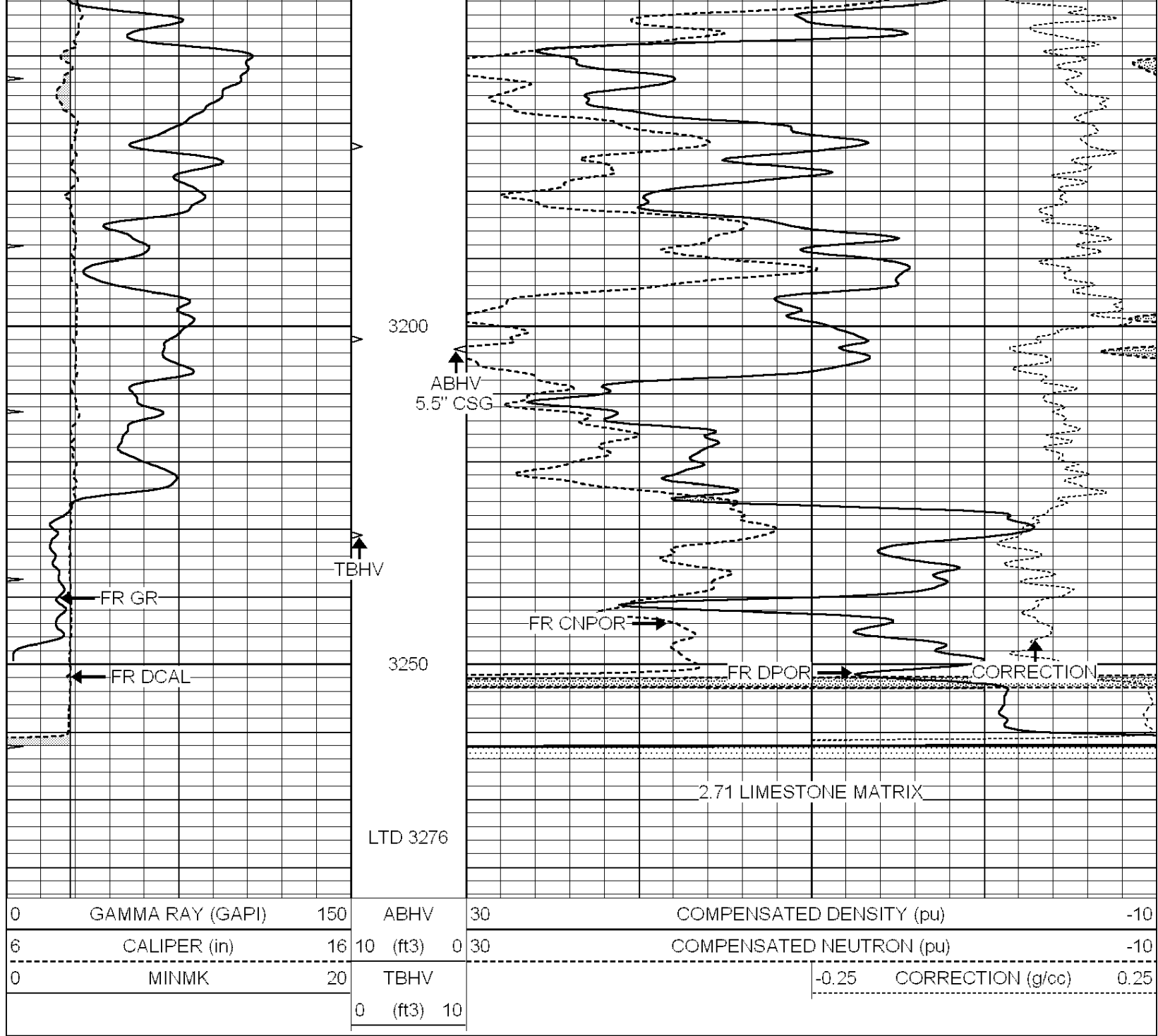








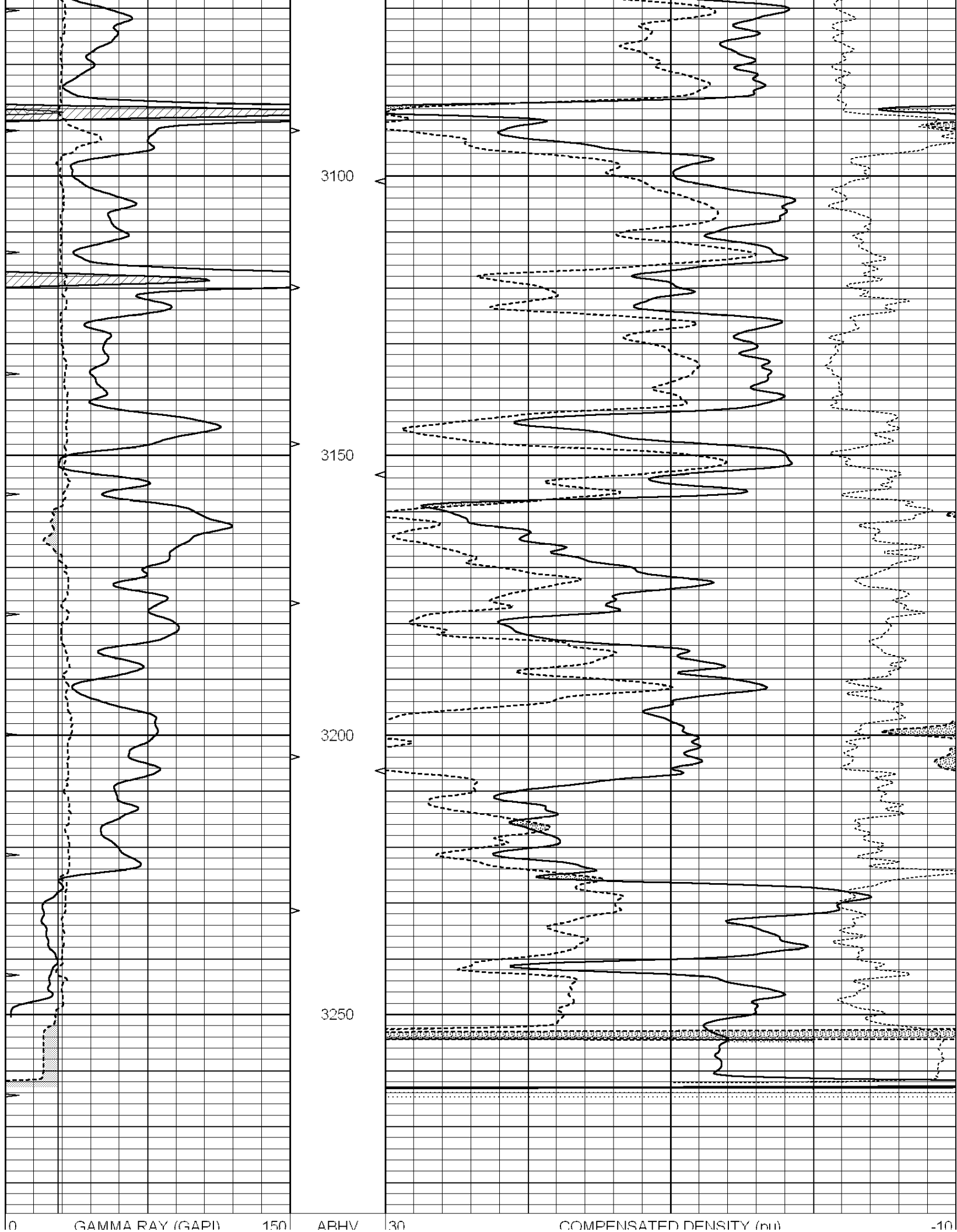




# REPEAT SECTION

Database File: 012028ddn.db  
 Dataset Pathname: pass2.1  
 Presentation Format: \_den\_neu  
 Dataset Creation: Tue Oct 29 04:01:04 2013 by Calc Open-Cased 090629  
 Charted by: Depth in Feet scaled 1:240

0	GAMMA RAY (GAPI)	150	ABHV	30	COMPENSATED DENSITY (pu)	-10
6	CALIPER (in)	16	10 (ft3)	0 30	COMPENSATED NEUTRON (pu)	-10
0	MINMK	20	TBHV		-0.25	CORRECTION (g/cc) 0.25
			0 (ft3)	10		



6	CALIPER (in)	16	10 (ft3)	0	30	COMPENSATED NEUTRON (pu)	-10
0	MINMK	20	TBHV			-0.25	CORRECTION (g/cc) 0.25
			0 (ft3)	10			

Calibration Report

Database File: 012028ddn.db  
 Dataset Pathname: pass3.1  
 Dataset Creation: Tue Oct 29 04:04:35 2013 by Calc Open-Cased 090629

Dual Induction Calibration Report

Serial-Model: DIL3-GEAR  
 Performed: Mon Oct 28 10:42:50 2013

Loop:	Readings			References			Results	
	Air	Loop		Air	Loop		m	b
Deep	0.011	0.656	V	0.000	400.000	mmho/m	480.000	10.000
Medium	0.013	0.740	V	0.000	462.500	mmho/m	570.000	-1.000
Internal:	Zero	Cal		Zero	Cal		m	b
Deep	0.002	0.645	V	0.000	400.000	mmho/m	560.000	-1.071
Medium	0.007	0.740	V	0.000	462.500	mmho/m	540.000	-4.000

Compensated Density Calibration Report

Serial-Model: GEAR1-GEARHART  
 Source / Verifier: 147 / 147  
 Master Calibration Performed: Mon Oct 28 08:14:15 2013

Master Calibration

	Density		Far Detector	Near Detector	
Magnesium	1.710	g/cc	1205.77	610.74	cps
Aluminum	2.590	g/cc	271.21	419.72	cps
Spine Angle = 75.89			Density/Spine Ratio = 0.572		
	Size		Reading		
Small Ring	8.20	in	4.83	V	
Large Ring	14.00	in	7.01	V	

Compensated Neutron Calibration Report

Serial Number: NEU\_4I  
 Tool Model: G

CALIBRATION

Detector	Readings		Target		Normalization
Short Space	1.00	cps	1.00	cps	1.0000
Long Space	1.00	cps	1.00	cps	1.0000

Gamma Ray Calibration Report

Serial Number: GR5  
 Tool Model: OPEN  
 Performed: Mon Oct 28 12:29:55 2013  
 Calibrator Value: 1.0 GAPI

Background Reading:	0.0	cps
Calibrator Reading:	1.0	cps
Sensitivity:	0.8400	GAPI/cps