



**COMPLETION
& PRODUCTION
SERVICES CO.**

**MICRO
LOG**

Company MAI OIL OPERATIONS, INC.
Well HERBER "A" #1
Field WILDCAT
County RUSSELL State KANSAS

Company MAI OIL OPERATIONS, INC.
Well HERBER "A" #1
Field WILDCAT
County RUSSELL
State KANSAS

Location: API #: 15-167-23910-0000
2125' FNL & 1875' FWL
NE - SW - SE - NW
SEC 21 TWP 14S RGE 12W
GROUND LEVEL Elevation 1717
Log Measured From KELLY BUSHING 8' A.G.L.
Drilling Measured From KELLY BUSHING
Other Services
CDL/CNL
DIL
Elevation
K.B. 1725
D.F. 1723
G.L. 1717

Date	10/29/13
Run Number	TWO
Depth Driller	3274
Depth Logger	3276
Bottom Logged Interval	3274
Top Log Interval	2100
Casing Driller	349
Casing Logger	348
Bit Size	7.875
Type Fluid in Hole	CHEMICAL MUD
Density / Viscosity	9.5/59
pH / Fluid Loss	10.5/10.4
Source of Sample	FLOWLINE
Rim @ Meas. Temp	0.70 @ 72F
Rmf @ Meas. Temp	0.53 @ 72F
Rmc @ Meas. Temp	0.84 @ 72F
Source of Rmf / Rmc	MEASURED
Rim @ BHT	.22 @ 109F
Time Circulation Stopped	2 HOURS
Time Logger on Bottom	
Maximum Recorded Temperature	109F
Equipment Number	860
Location	HAYS, KS.
Recorded By	CAPPELLUCCI
Witnessed By	JIM MUSGROVE

<<< Fold Here >>>

All interpretations are opinions based on inferences from electrical or other measurements and we cannot and do not guarantee the accuracy or correctness of any interpretation, and we shall not, except in the case of gross or willful negligence on our part, be liable or responsible for any loss, costs, damages, or expenses incurred or sustained by anyone resulting from any interpretation made by any of our officers, agents or employees. These interpretations are also subject to our general terms and conditions set out in our current Price Schedule.

Comments

NABORS COMPLETION & PRODUCTION SERVICES
785-628-6395
THANK YOU FOR YOUR BUSINESS
DIRECTIONS: BUNKER HILL - 2 EAST ON OLD 40 - 1 1/2 SOUTH - EAST & SOUTH INTO



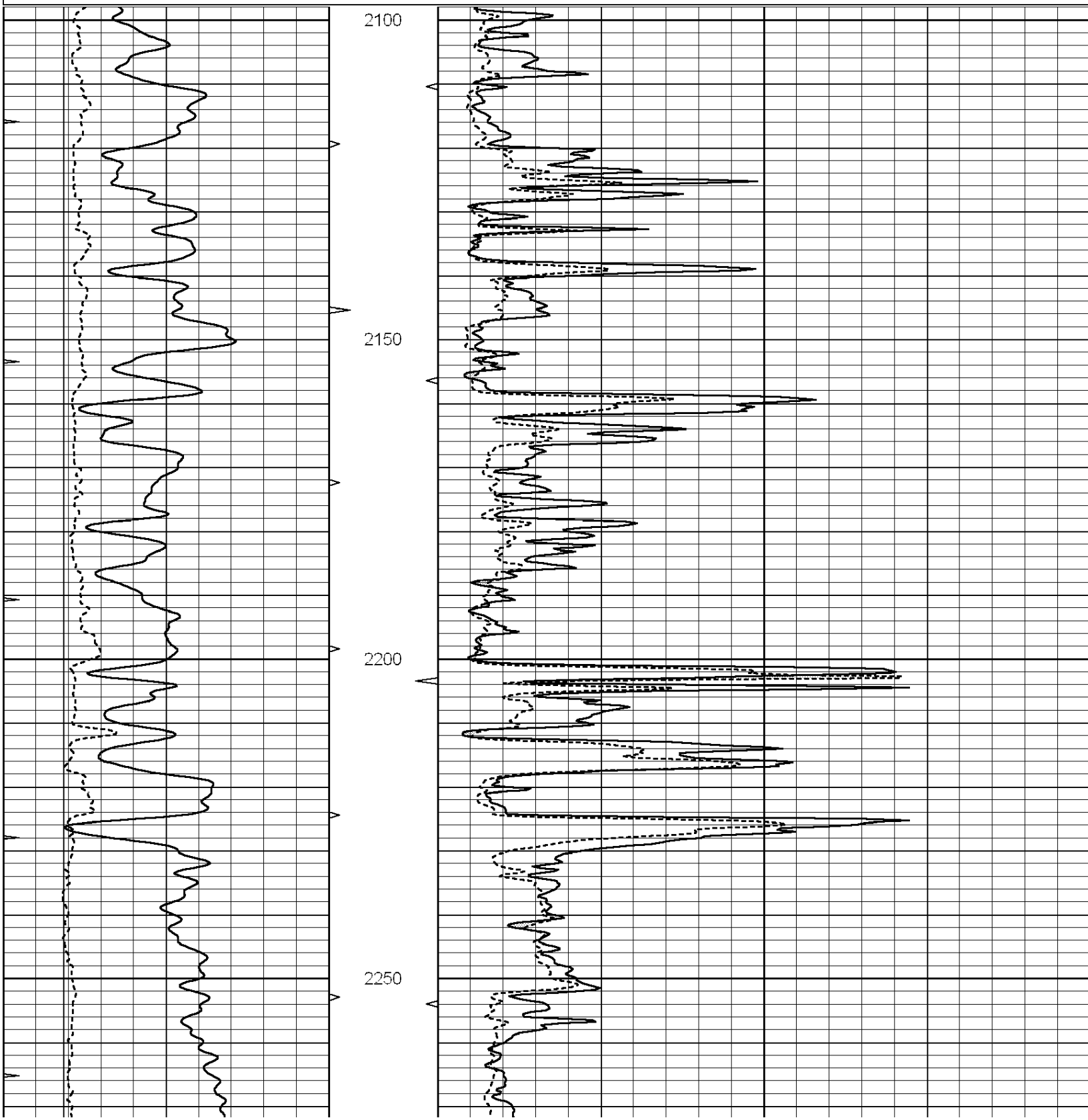
**COMPLETION
& PRODUCTION**

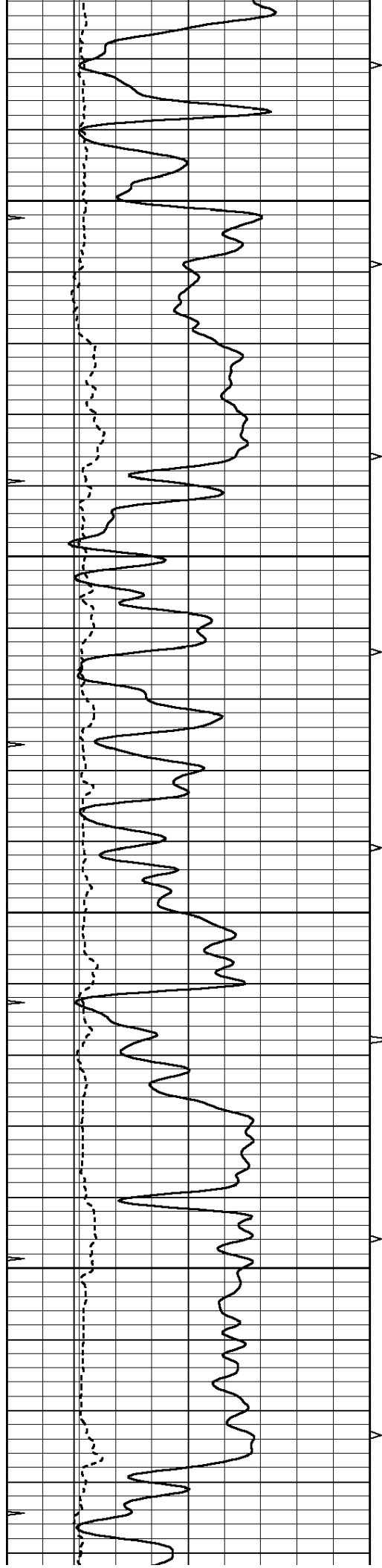
MAIN SECTION

Database File: 012028ddn.db
 Dataset Pathname: pass6.1
 Presentation Format: _micro
 Dataset Creation: Tue Oct 29 05:59:41 2013 by Calc Open-Cased 090629
 Charted by: Depth in Feet scaled 1:240

0	GAMMA RAY (GAPI)	150
6	MELCAL (in)	16
0	MINMK	20

0	MEL1.5 (Ohm-m)	40
0	MEL2.0 (Ohm-m)	40



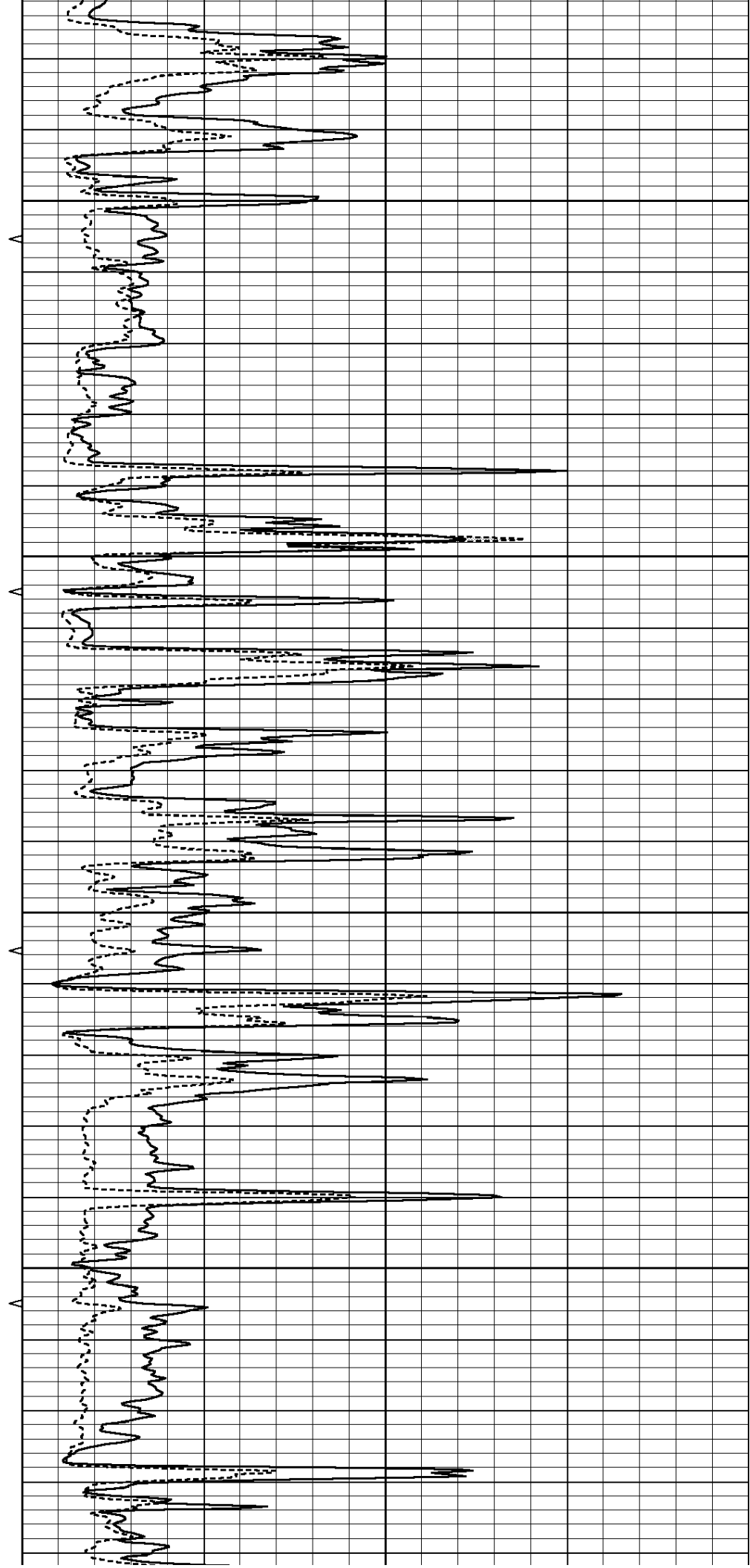


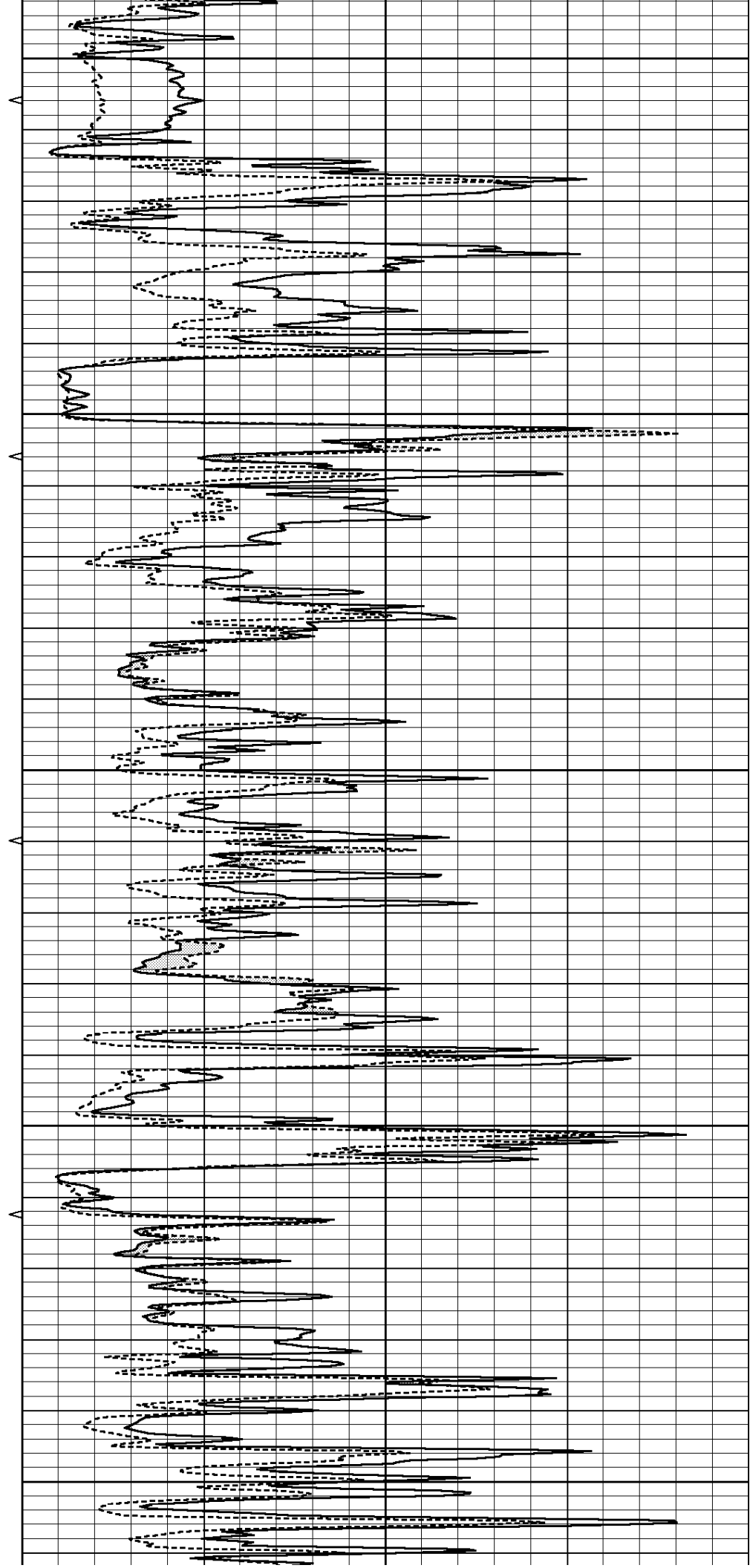
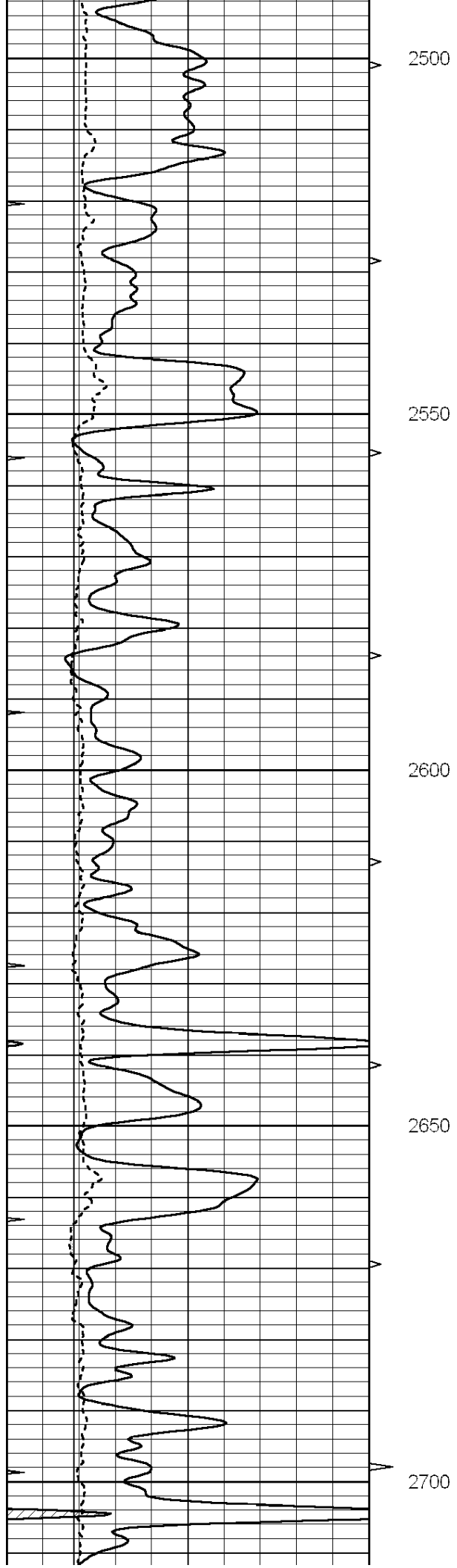
2300

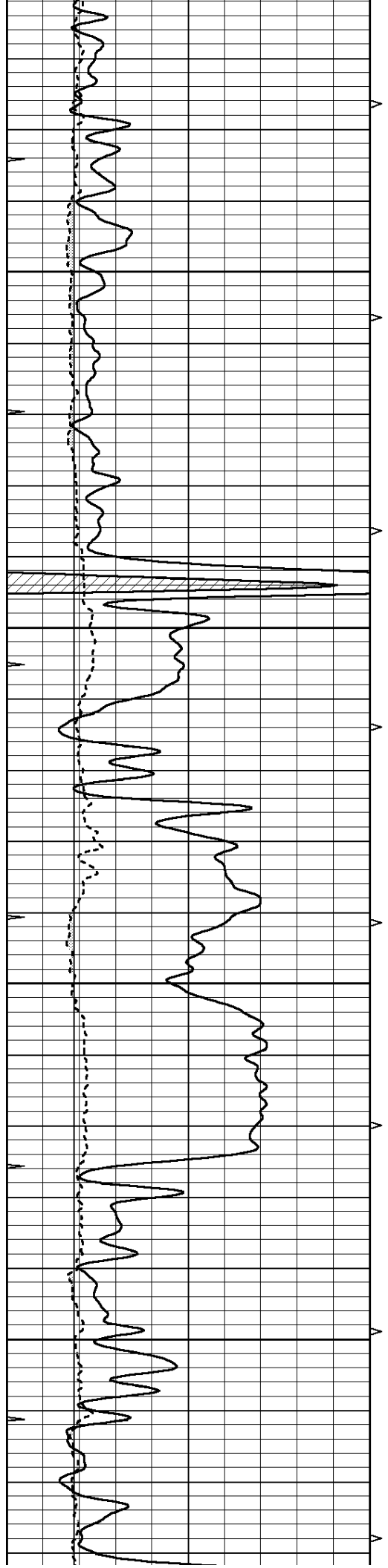
2350

2400

2450





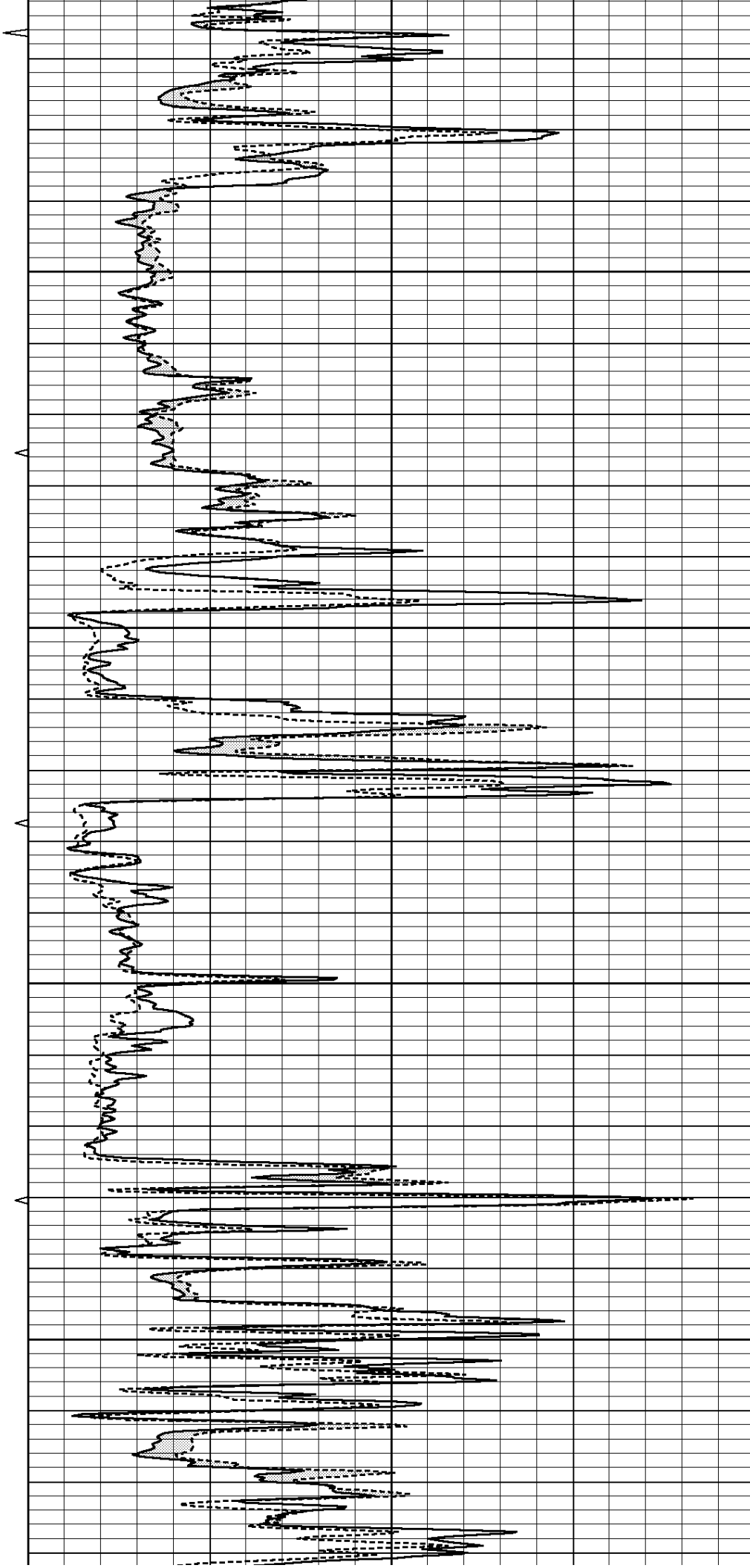


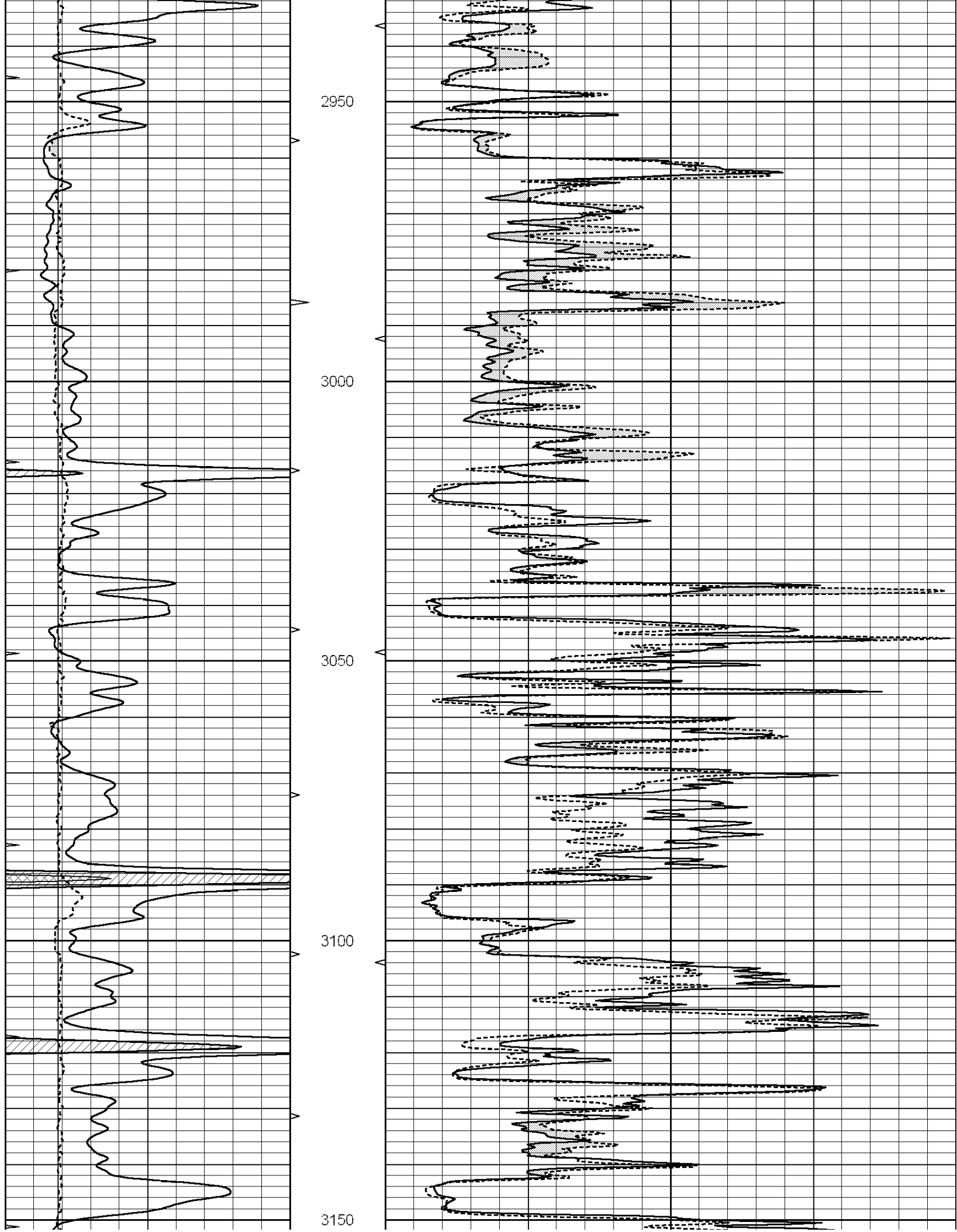
2750

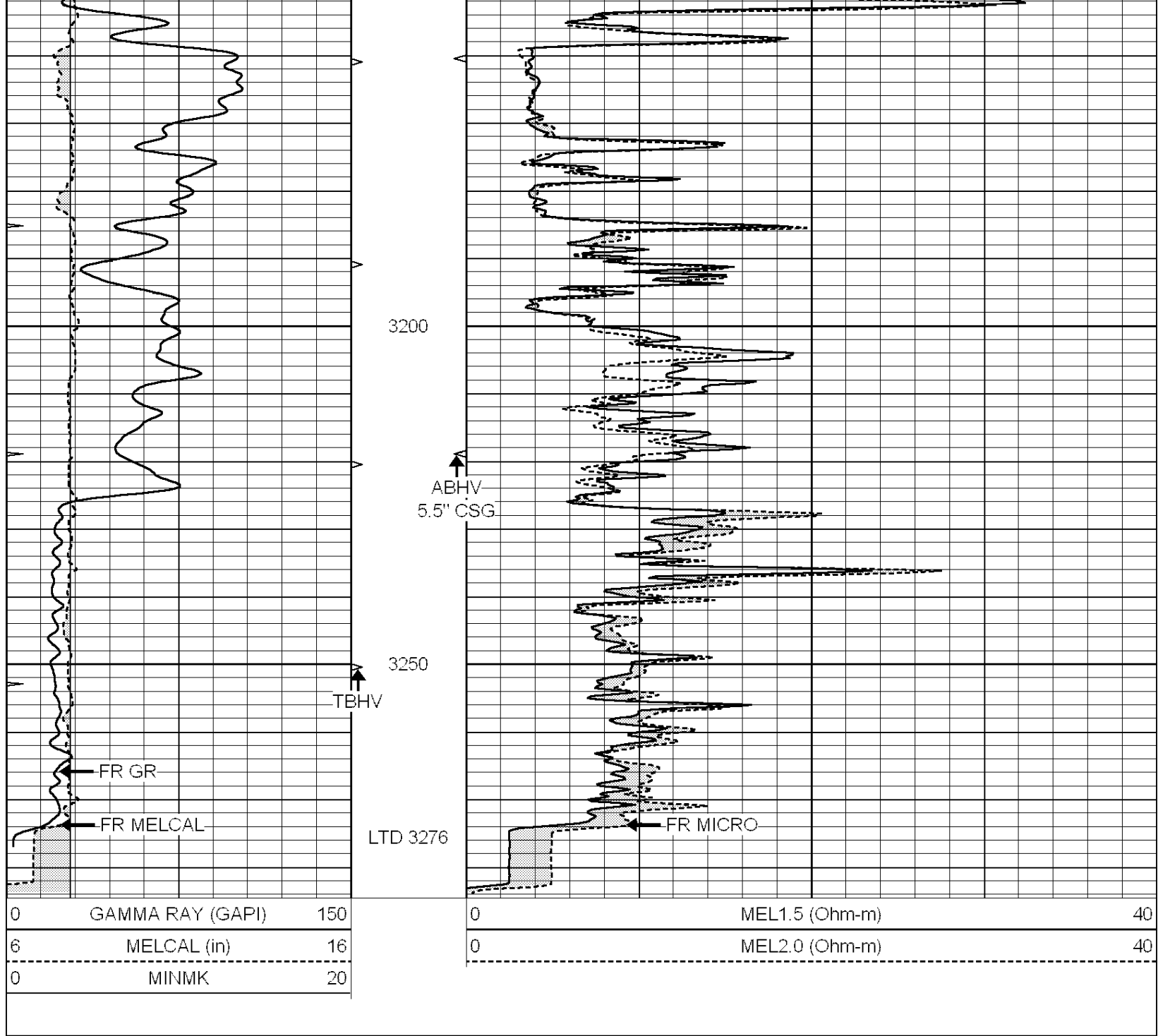
2800

2850

2900



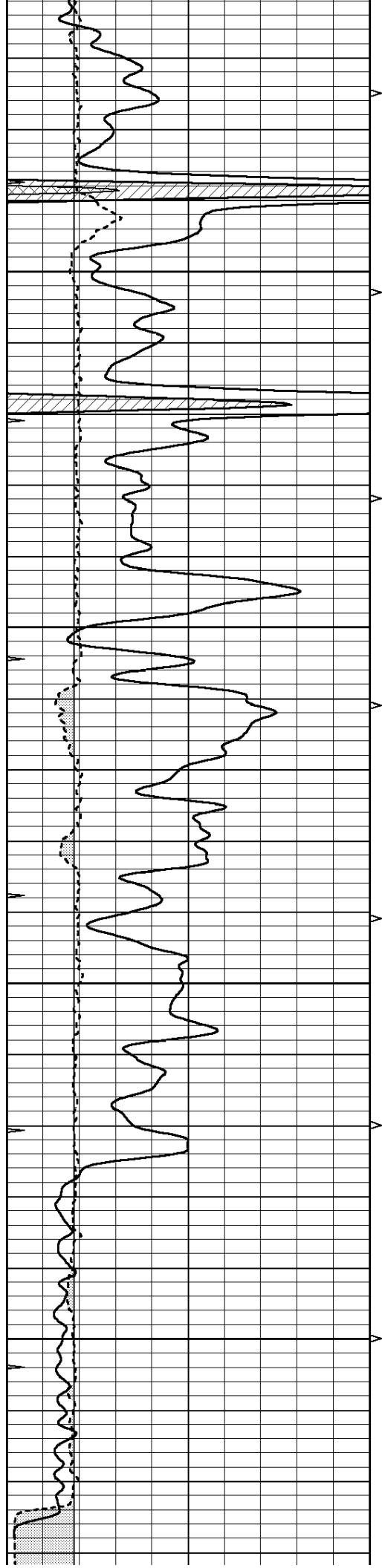




REPEAT SECTION

Database File: 012028ddn.db
 Dataset Pathname: pass5.1
 Presentation Format: _micro
 Dataset Creation: Tue Oct 29 05:45:32 2013 by Calc Open-Cased 090629
 Charted by: Depth in Feet scaled 1:240

0	GAMMA RAY (GAPI)	150	0	MEL1.5 (Ohm-m)	40
6	MELCAL (in)	16	0	MEL2.0 (Ohm-m)	40
0	MINMK	20			

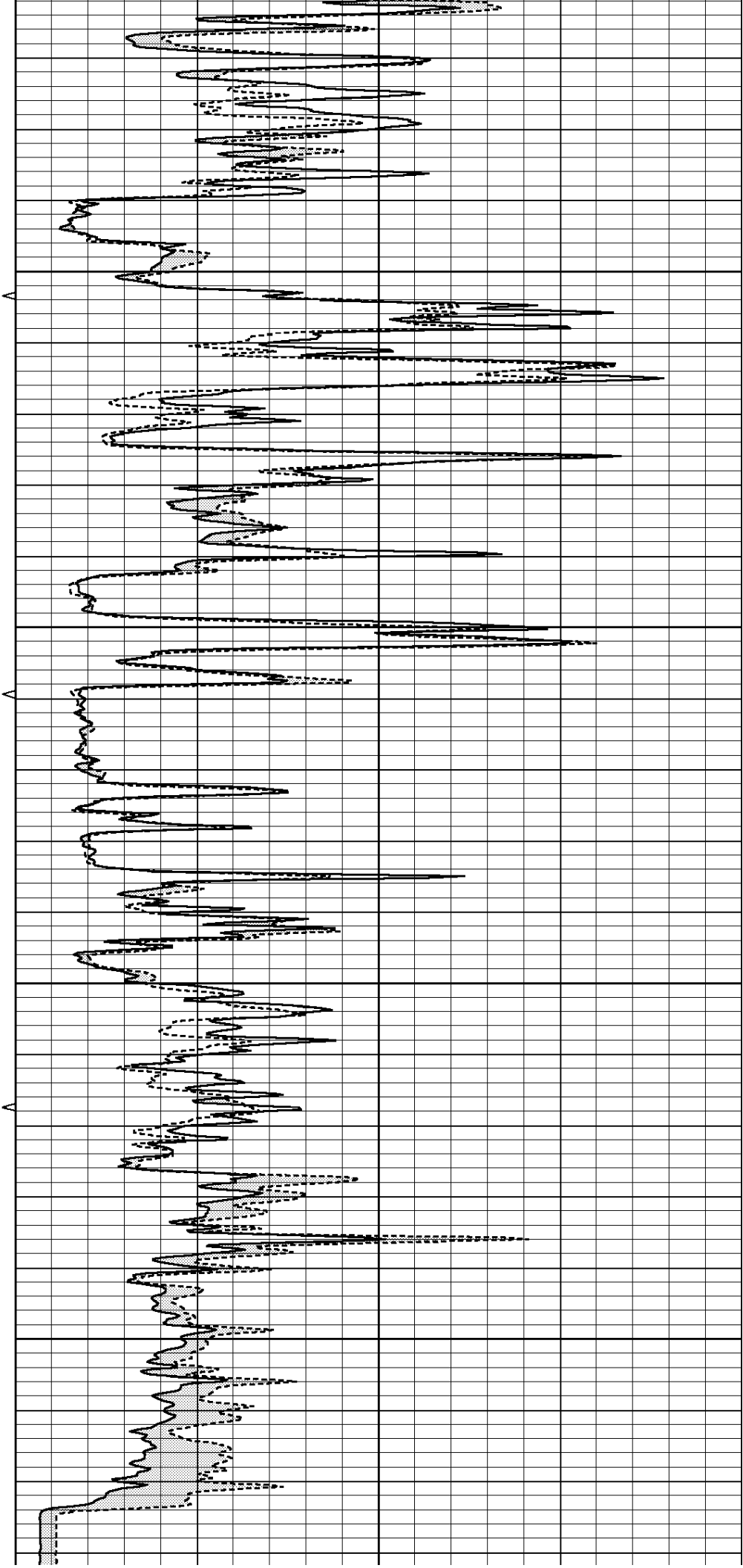


3100

3150

3200

3250



0	GAMMA RAY (GAPI)	150
6	MELCAL (in)	16
0	MINMK	20

0	MEL1.5 (Ohm-m)	40
0	MEL2.0 (Ohm-m)	40

Calibration Report

Database File: 012028ddn.db
 Dataset Pathname: pass5.1
 Dataset Creation: Tue Oct 29 05:45:32 2013 by Calc Open-Cased 090629

MICRO Calibration Report

Serial Number:	MICRO4	
Tool Model:	PROBE	
Performed:	Mon Oct 28 12:02:24 2013	
Caliper Calibration:	Gain=1.800	Offset=-2.800
References	Low Cal 8.600	High Cal 14.000
Readings	5.584	7.602
1.5" Calibration:	Gain=36.000	Offset=-0.500
References	Low Cal 0.000	High Cal 20.000
Readings	0.009	1.541
2" Calibration:	Gain=30.000	Offset=0.350
References	Low Cal 0.000	High Cal 20.000
Readings	0.004	1.198

Gamma Ray Calibration Report

Serial Number:	GR5	
Tool Model:	OPEN	
Performed:	Mon Oct 28 12:29:55 2013	
Calibrator Value:	1.0	GAPI
Background Reading:	0.0	cps
Calibrator Reading:	1.0	cps
Sensitivity:	0.7000	GAPI/cps