

**COMPLETION
& PRODUCTION
SERVICES CO.**

**COMPENSATED
DENSITY / NEUTRON
LOG**

Company RITCHIE EXPLORATION, INC.
Well #1 HAMMEKE 13C
Field WILDCAT
County LANE
State KANSAS

Company RITCHIE EXPLORATION, INC.
Well #1 HAMMEKE 13C
Field WILDCAT
County LANE State KANSAS

Location: API #: 15-101-22470
1935' FSL & 335' FWL
SEC 13 TWP 18S RGE 28W
Permanent Datum GROUND LEVEL Elevation 2723
Log Measured From KELLY BUSHING 5' A.G.L.
Drilling Measured From KELLY BUSHING
Other Services
DIL
Elevation
K.B. 2728
D.F.
G.L. 2723

Date	11-3-13
Run Number	ONE
Depth Driller	4695
Depth Logger	4696
Bottom Logged Interval	4672
Top Log Interval	3500
Casing Driller	232
Casing Logger	232
Bit Size	7.875
Type Fluid in Hole	CHEMICAL MUD
Density / Viscosity	9.2 / 54
pH / Fluid Loss	10.5 / 6.4
Source of Sample	FLOWLINE
Rim @ Meas. Temp	1.10 @ 80F
Rmf @ Meas. Temp	0.83 @ 80F
Rmc @ Meas. Temp	1.32 @ 80F
Source of Rmf / Rmc	MEASURED
Rim @ BHT	.720 @ 122F
Time Circulation Stopped	3HOURS
Time Logger on Bottom	2:45 P.M.
Maximum Recorded Temperature	122F
Equipment Number	860
Location	HAYS, KS.
Recorded By	RUPP
Witnessed By	MIKE ENGELBRECHT

<<< Fold Here >>>

All interpretations are opinions based on inferences from electrical or other measurements and we cannot and do not guarantee the accuracy or correctness of any interpretation, and we shall not, except in the case of gross or willful negligence on our part, be liable or responsible for any loss, costs, damages, or expenses incurred or sustained by anyone resulting from any interpretation made by any of our officers, agents or employees. These interpretations are also subject to our general terms and conditions set out in our current Price Schedule.

Comments

NABORS COMPLETION & PRODUCTION SERVICES
785-628-6395
THANK YOU FOR YOUR BUSINESS
DIRECTIONS: DIGHTON, 5E TO PAWNEE RD., 1/2N, E INTO.

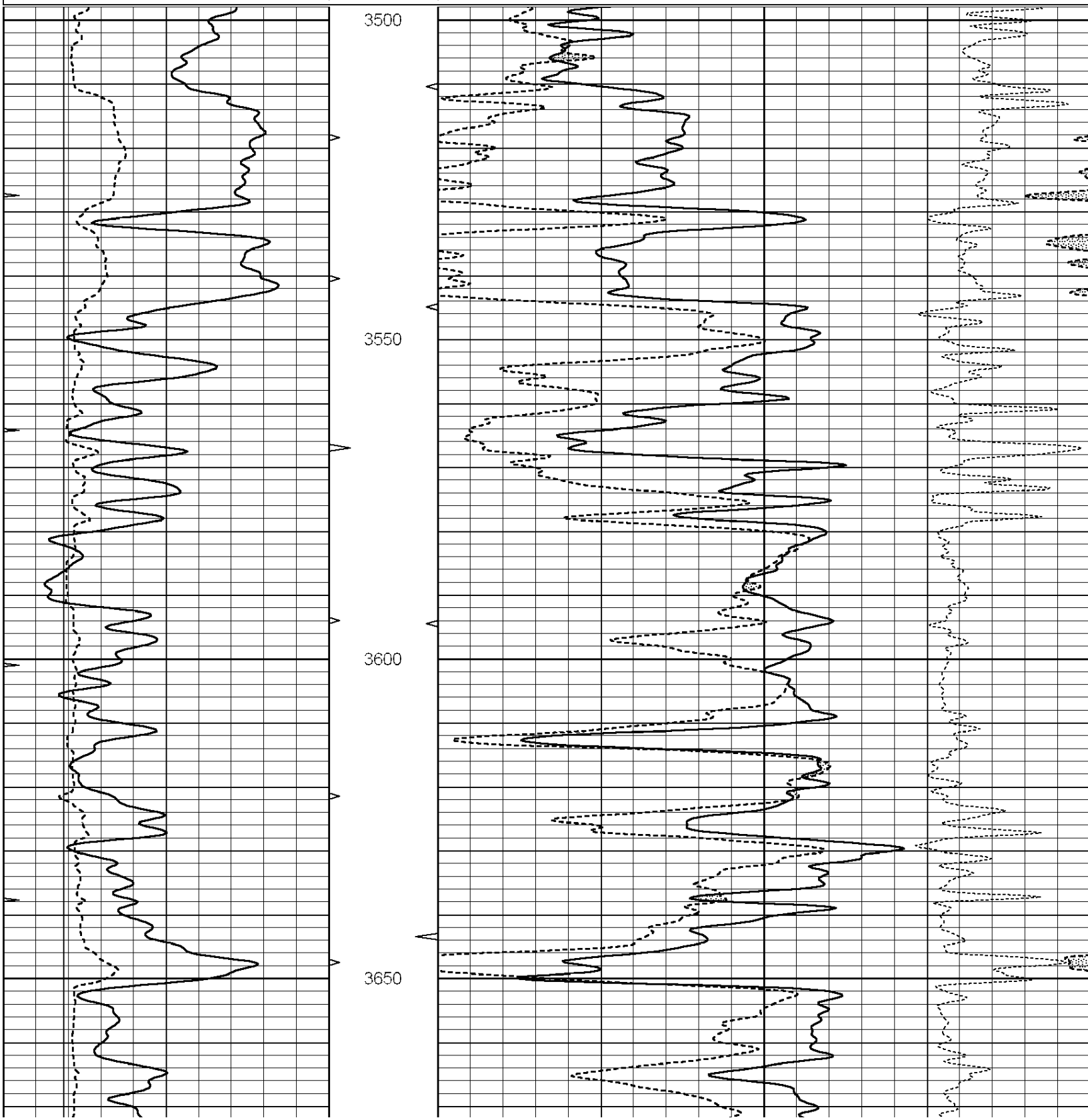


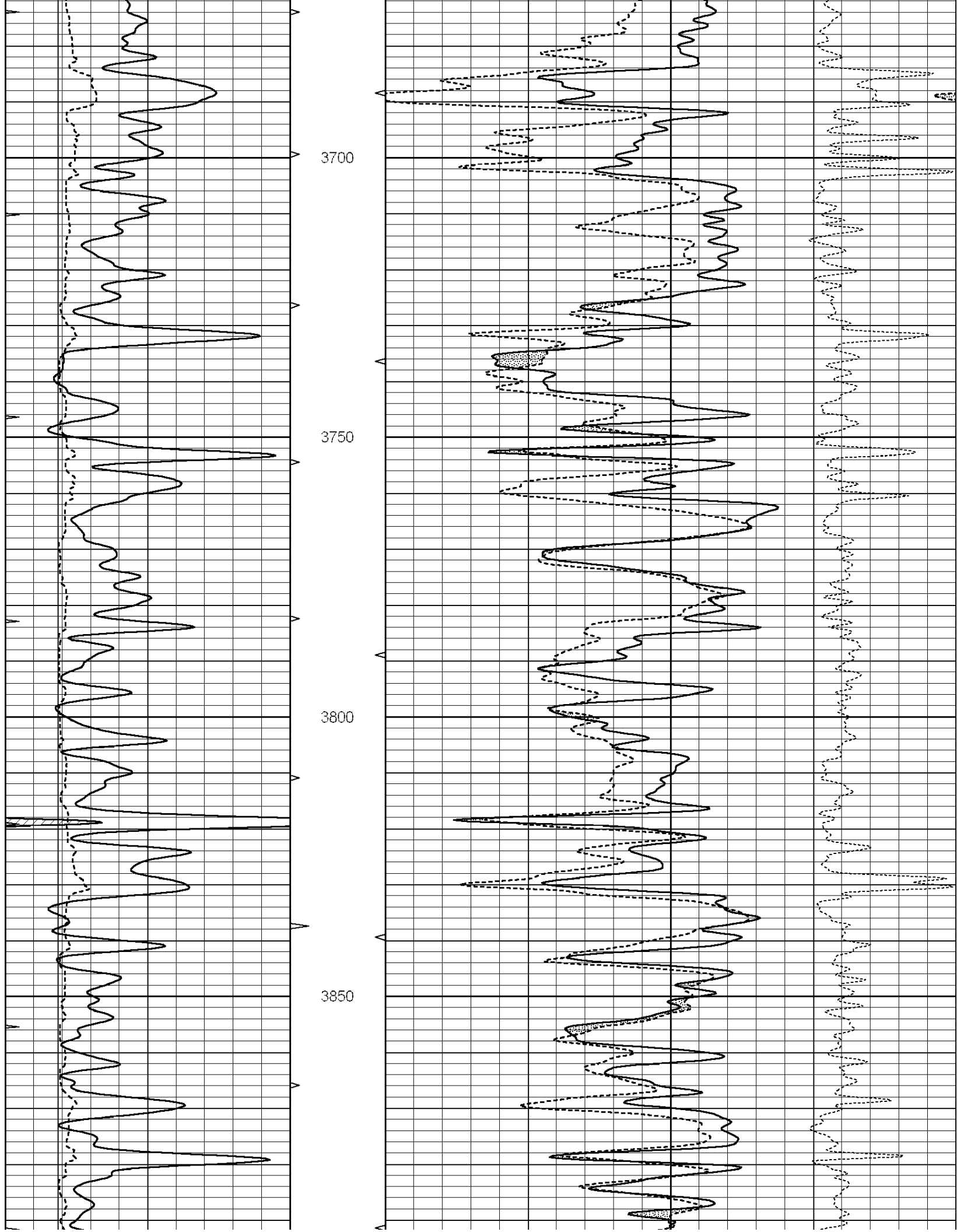
**COMPLETION
& PRODUCTION**

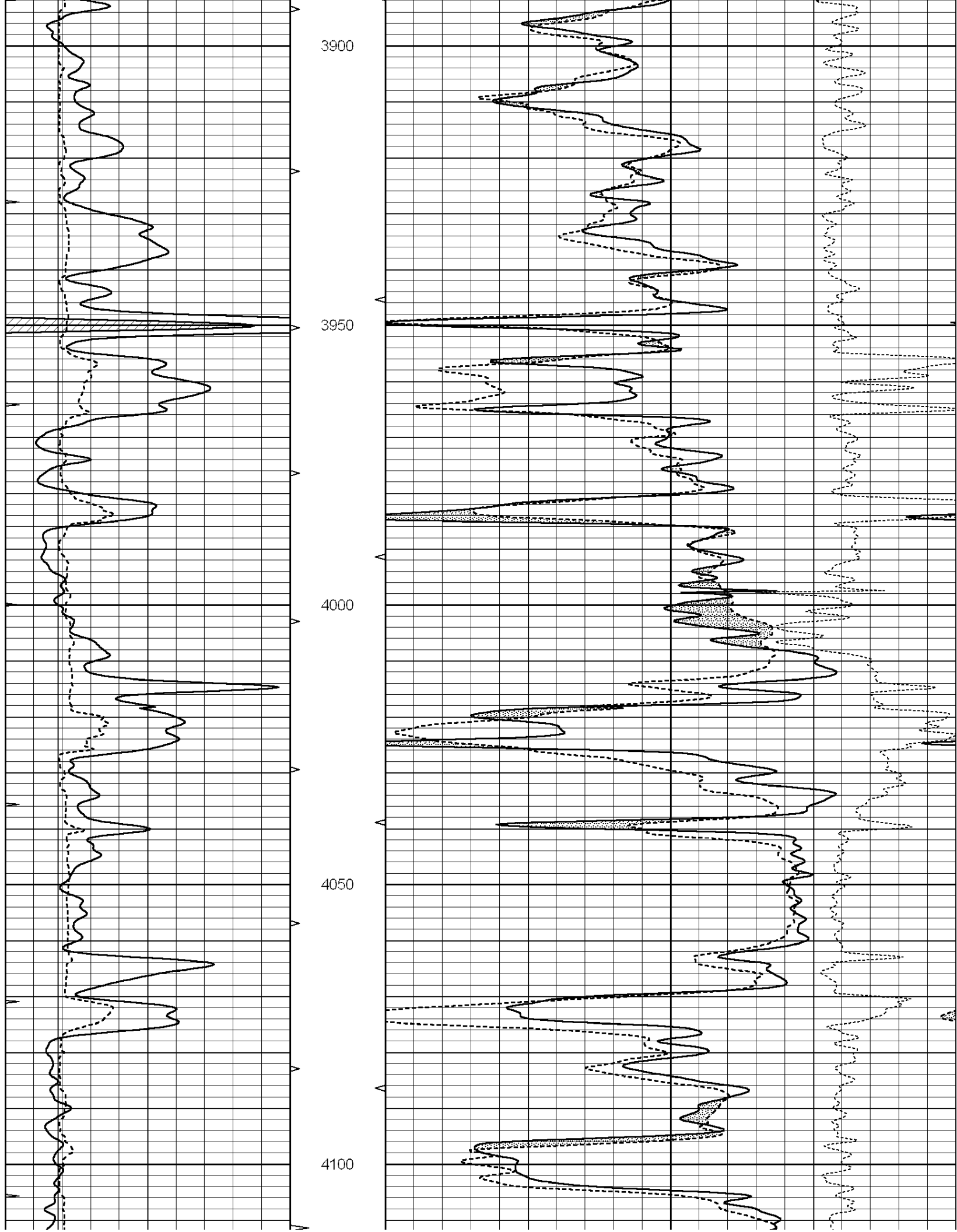
MAIN SECTION

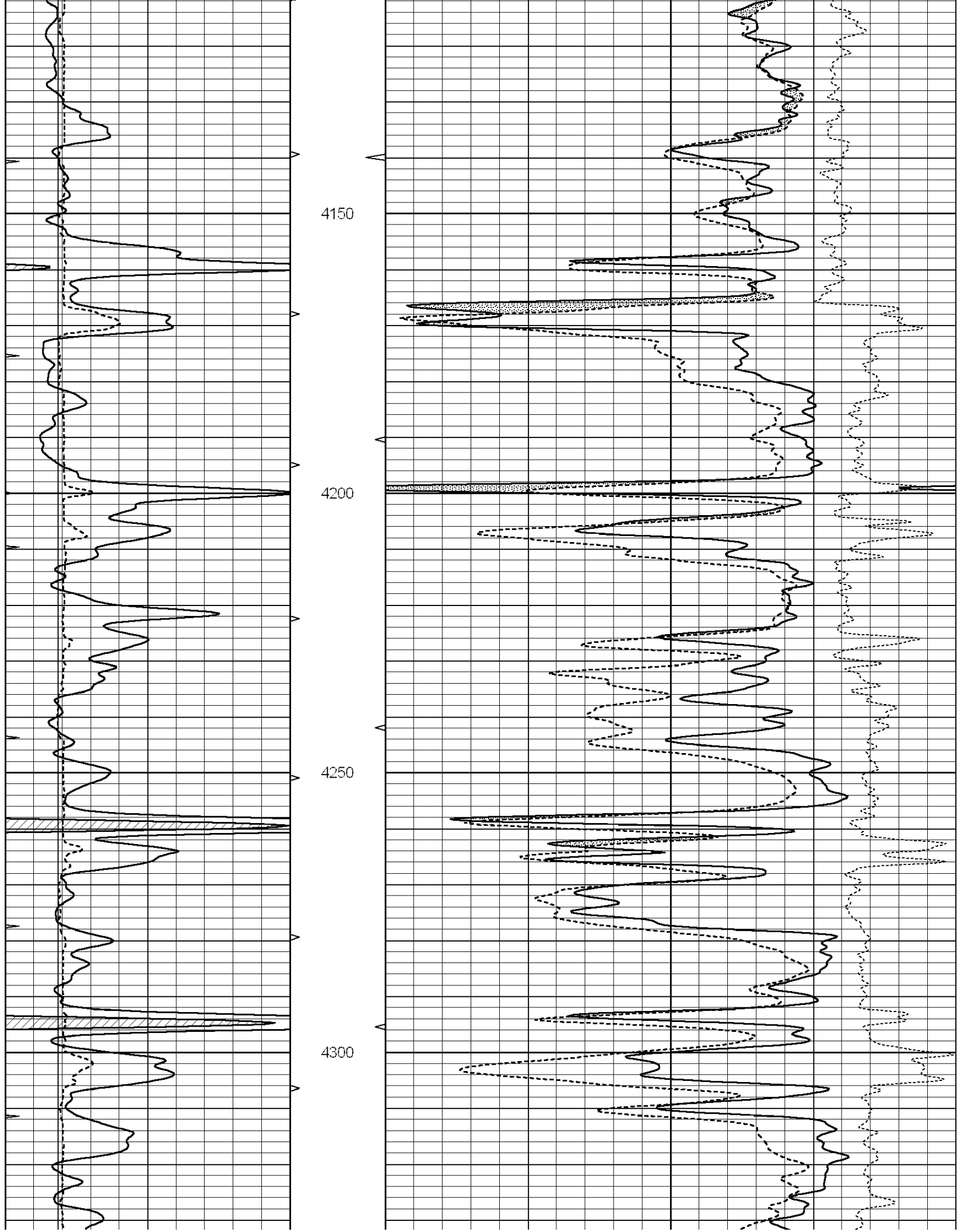
Database File: 012031ddn.db
 Dataset Pathname: pass3.3A
 Presentation Format: _den_neu
 Dataset Creation: Sun Nov 03 18:05:30 2013
 Charted by: Depth in Feet scaled 1:240

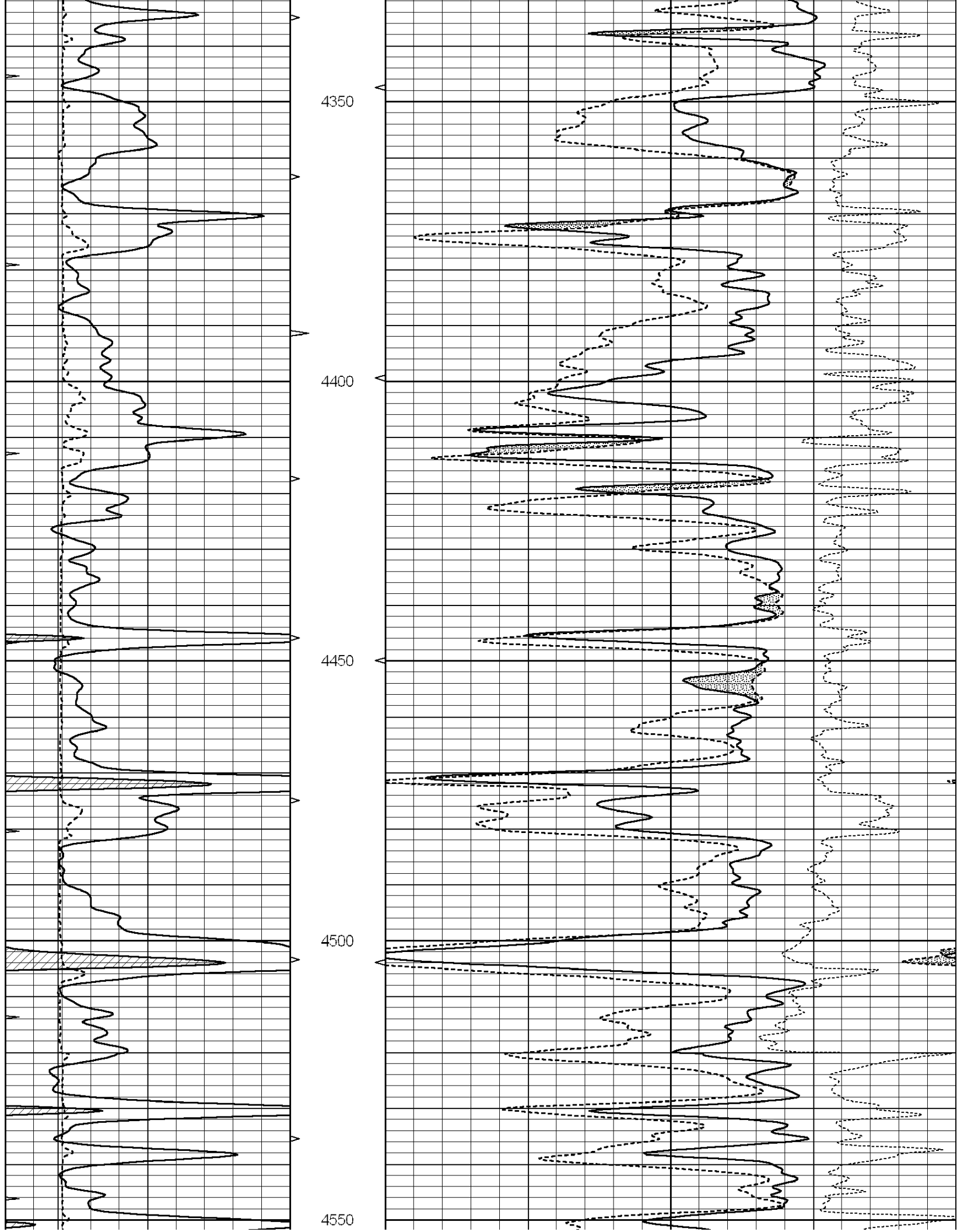
0	GAMMA RAY (GAPI)	150	ABHV	30	COMPENSATED DENSITY (pu)	-10
6	CALIPER (in)	16	10 (ft3)	0 30	COMPENSATED NEUTRON (pu)	-10
0	MINMK	20	TBHV		-0.25 CORRECTION (g/cc)	0.25
			0 (ft3)	10		

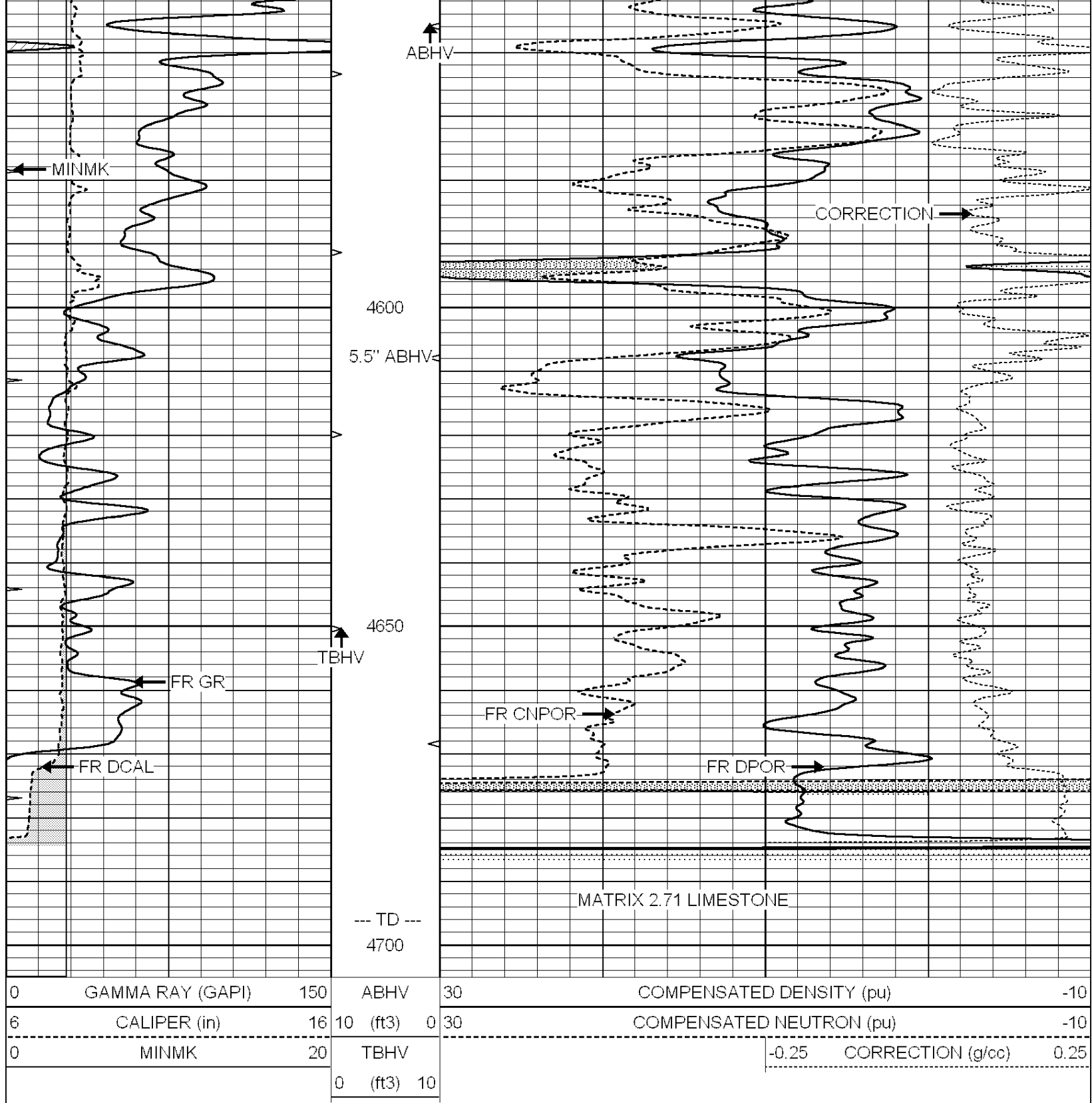












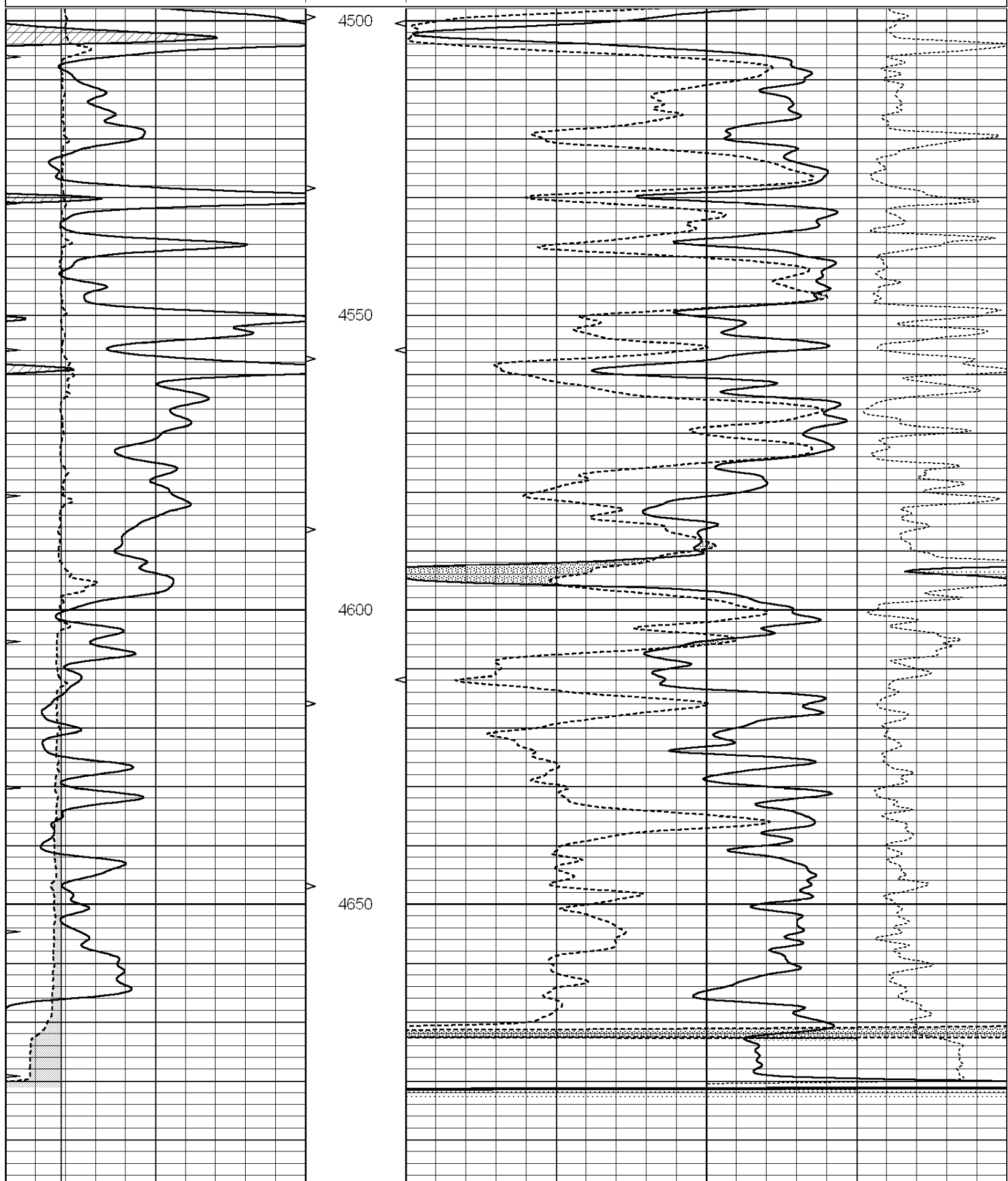
0	GAMMA RAY (GAPI)	150	ABHV	30	COMPENSATED DENSITY (pu)	-10
6	CALIPER (in)	16	10 (ft3)	0 30	COMPENSATED NEUTRON (pu)	-10
0	MINMK	20	TBHV		-0.25 CORRECTION (g/cc)	0.25
			0 (ft3)	10		



REPEAT SECTION

Database File: 012031ddn.db
 Dataset Pathname: pass2.A
 Presentation Format: _den_neu
 Dataset Creation: Sun Nov 03 16:27:50 2013 by Calc Open-Cased 090629
 Charted by: Depth in Feet scaled 1:240

0	GAMMA RAY (GAPI)	150	ABHV	30	COMPENSATED DENSITY (pu)	-10		
6	CALIPER (in)	16	10 (ft3)	0	30	COMPENSATED NEUTRON (pu)	-10	
0	MINMK	20	TBHV			-0.25	CORRECTION (g/cc)	0.25
			0 (ft3)	10				



Calibrator Value:	1.0	GAPI
Background Reading:	0.0	cps
Calibrator Reading:	1.0	cps
Sensitivity:	0.9100	GAPI/cps