



Pioneer Energy Services

Borehole Compensated Sonic Log

15-185-23,851-00-00

API No.

Company **H&D Exploration, LLC**

Well **Fisher #1**

Field

County **Stafford**

State **Kansas**

Location

NE NE NE
330' FNL & 330' FEL

Sec: 21 Twp: 25S Rge: 12W

Other Services
CNL/CDL
MEL/DIL

Permanent Datum Ground Level Elevation 1860
Log Measured From Kelly Bushing 8 Ft. Above Perm. Datum
Drilling Measured From Kelly Bushing

Elevation

K.B. 1868
D.F.
G.L. 1860

Date 1/20/2014

Run Number Two

Type Log BHC Sonic

Depth Driller 4225

Depth Logger 4223

Bottom Logged Interval 4212

Top Logged Interval 650

Type Fluid In Hole Chemical

Salinity, PPM CL 13000

Density 9.0

Level Full

Max. Rec. Temp. F 118

Operating Rig Time 4 Hours

Equipment -- Location 108 Hays

Recorded By J. Long

Witnessed By Scott Alberg

Borehole Record

Casing Record

Run No.	Bit	From	To	Size	Wgt.	From	To
1	12.25	00	680	8.625	24#	00	680
2	7.875	680	4225				

<<< Fold Here >>>

All interpretations are opinions based on inferences from electrical or other measurements and we cannot and do not guarantee the accuracy or correctness of any interpretation, and we shall not, except in the case of gross or willful negligence on our part, be liable or responsible for any loss, costs, damages, or expenses incurred or sustained by anyone resulting from any interpretation made by any of our officers, agents or employees. These interpretations are also subject to our general terms and conditions set out in our current Price Schedule.

Comments

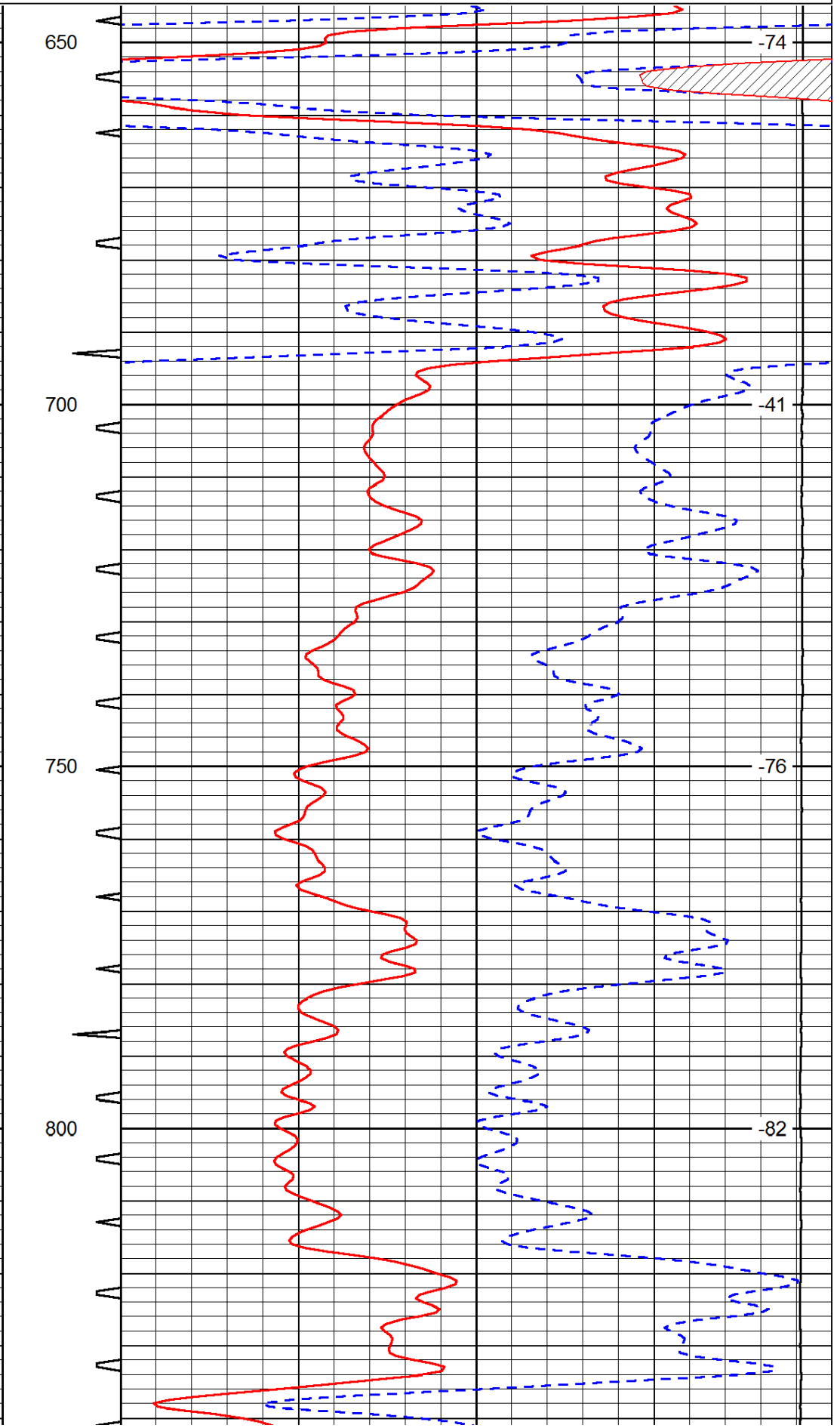
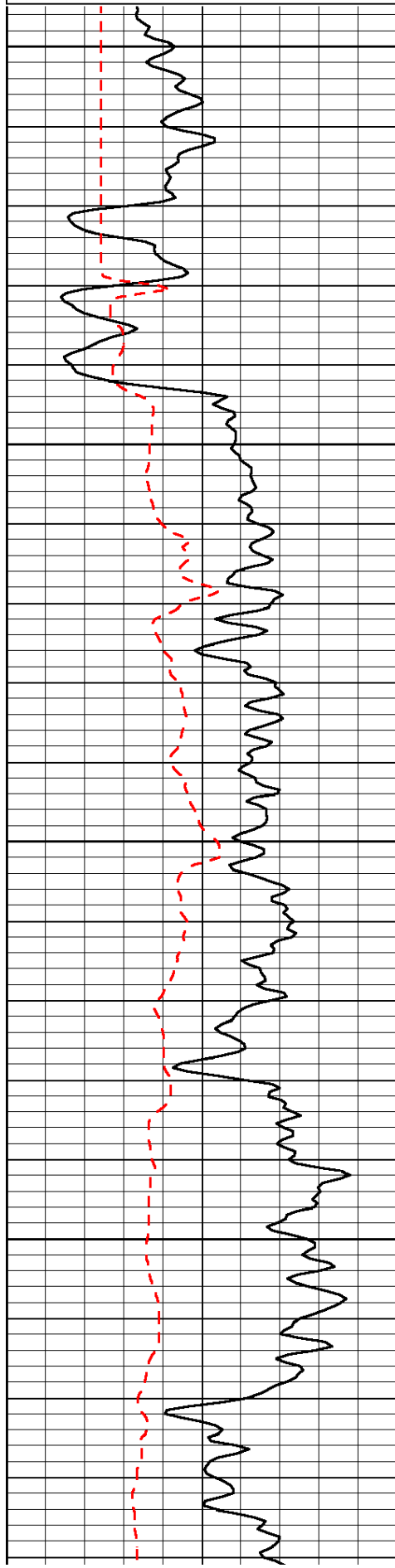
Thank you for using Pioneer Energy Services
www.pioneerenergy.com
785 625 3858

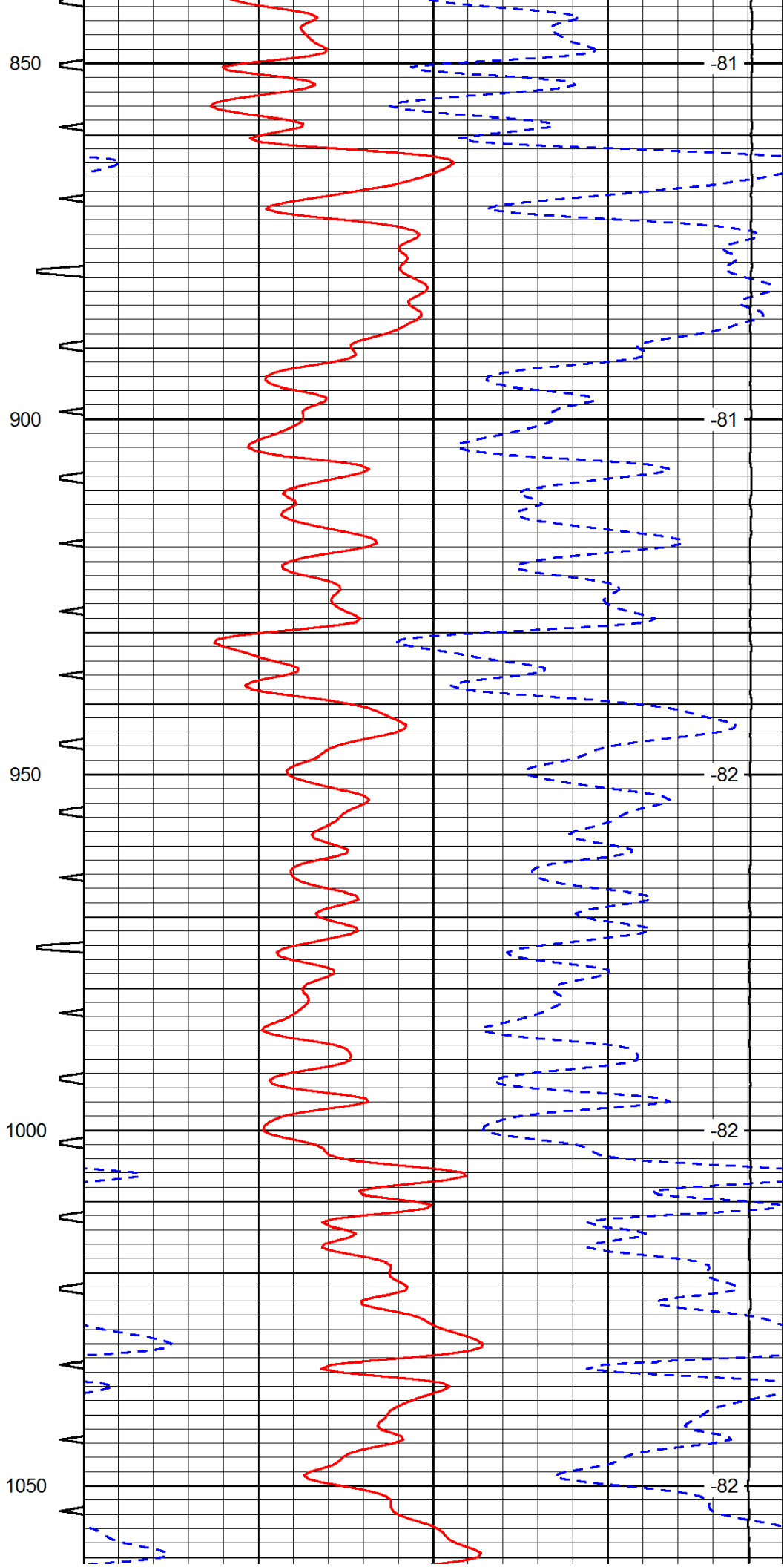
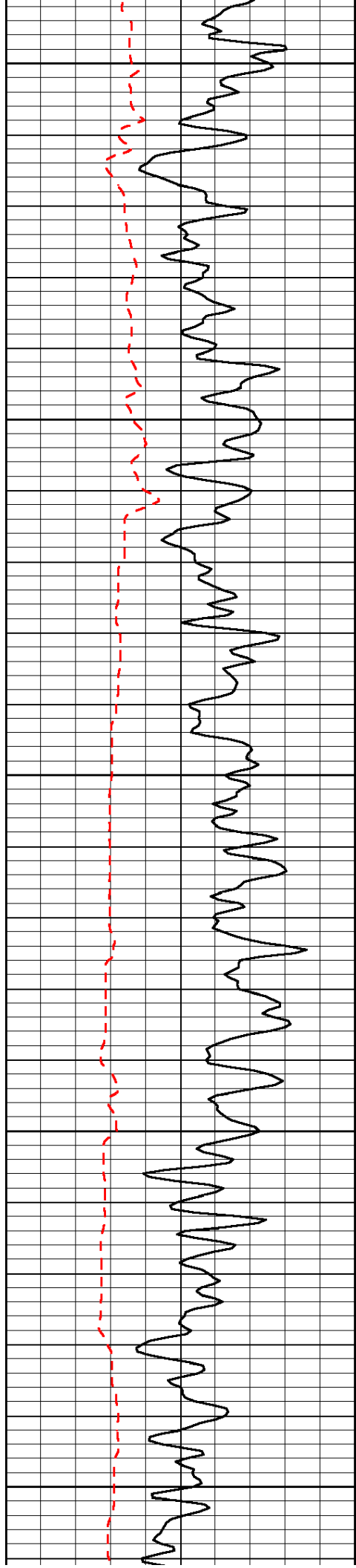
Stafford, 6 South to 60th Road, 2 West, 300' South, West Into

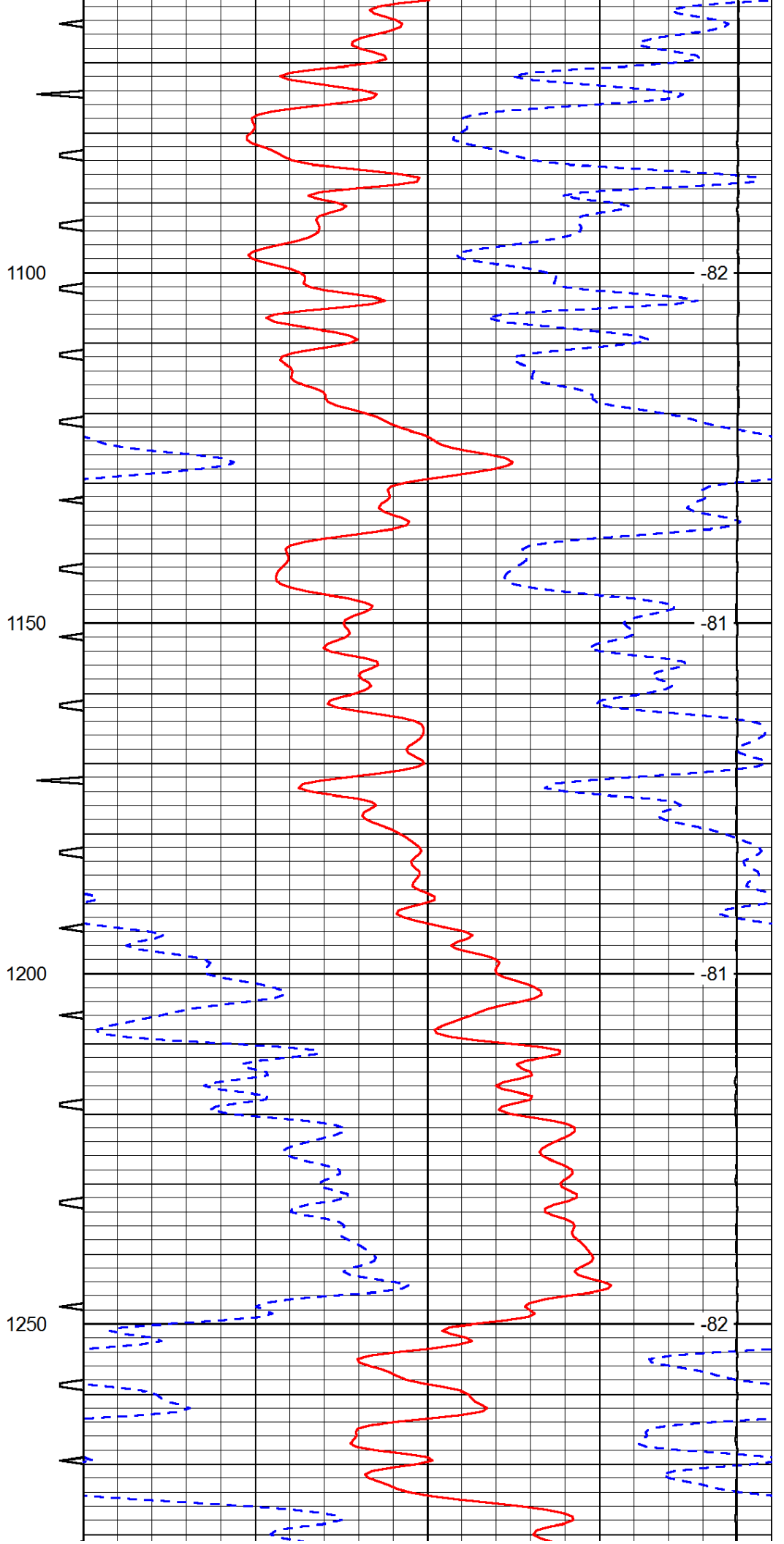
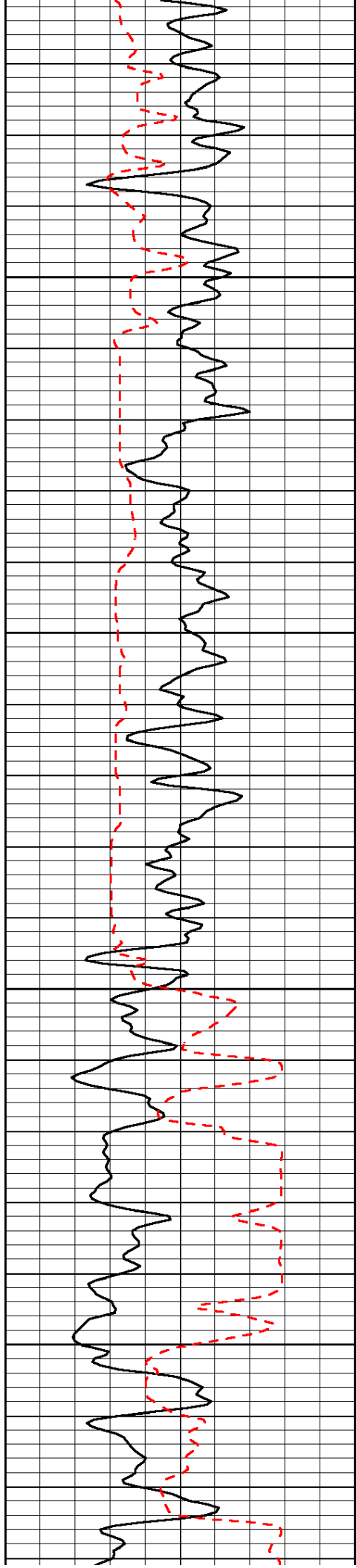
Database File: c:\warrior\data\h&d_fisher #1\h&d_fisher_1hd.db
 Dataset Pathname: dil/hdstck
 Presentation Format: sonic
 Dataset Creation: Mon Jan 20 21:28:38 2014
 Charted by: Depth in Feet scaled 1:240

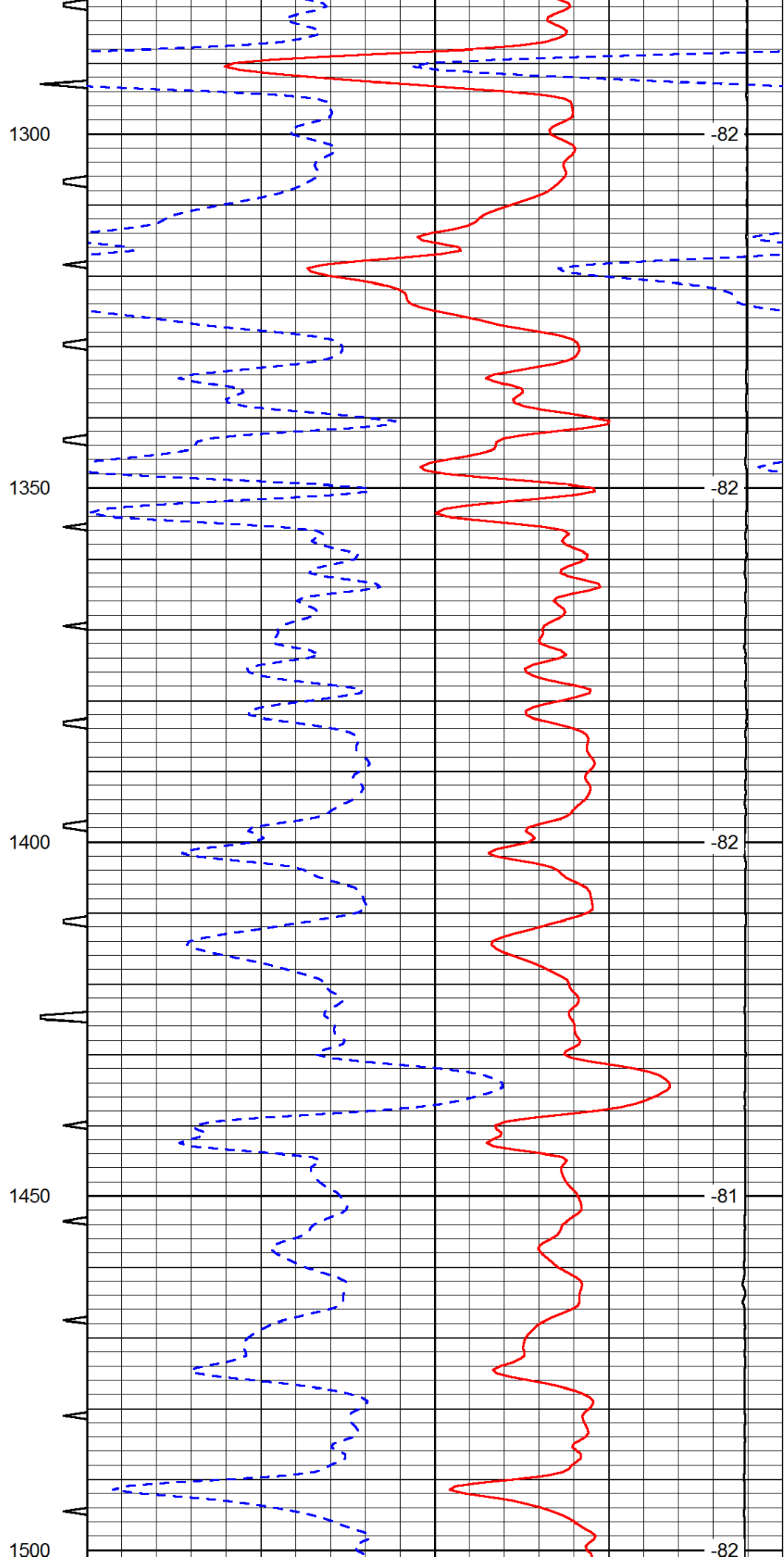
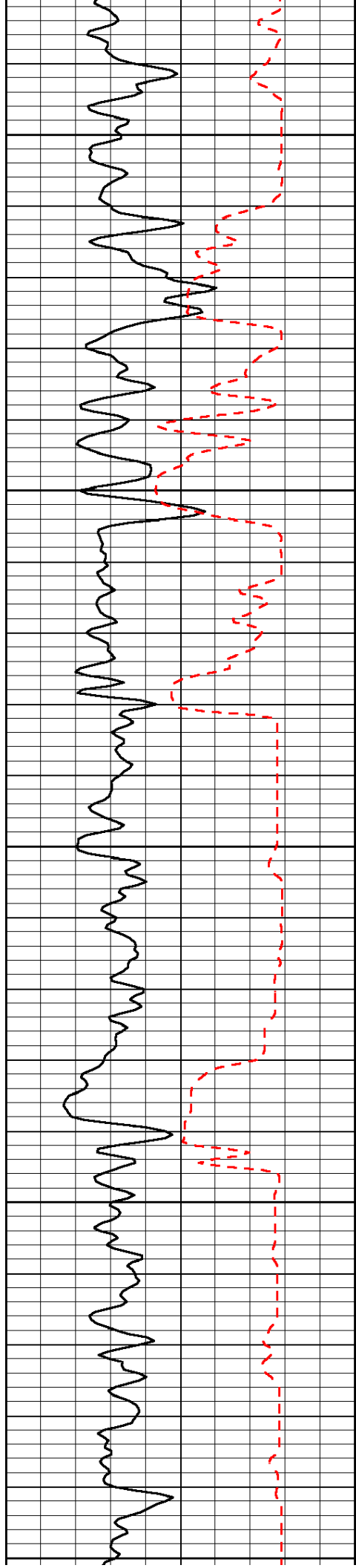
0	Gamma Ray	150	Sonic Int	140	Delta Time (usec/ft)	40
150	Gamma Ray	300	5	0	SPOR	-10
6	Caliper (GAPI)	16		15000	LTEN (lb)	0

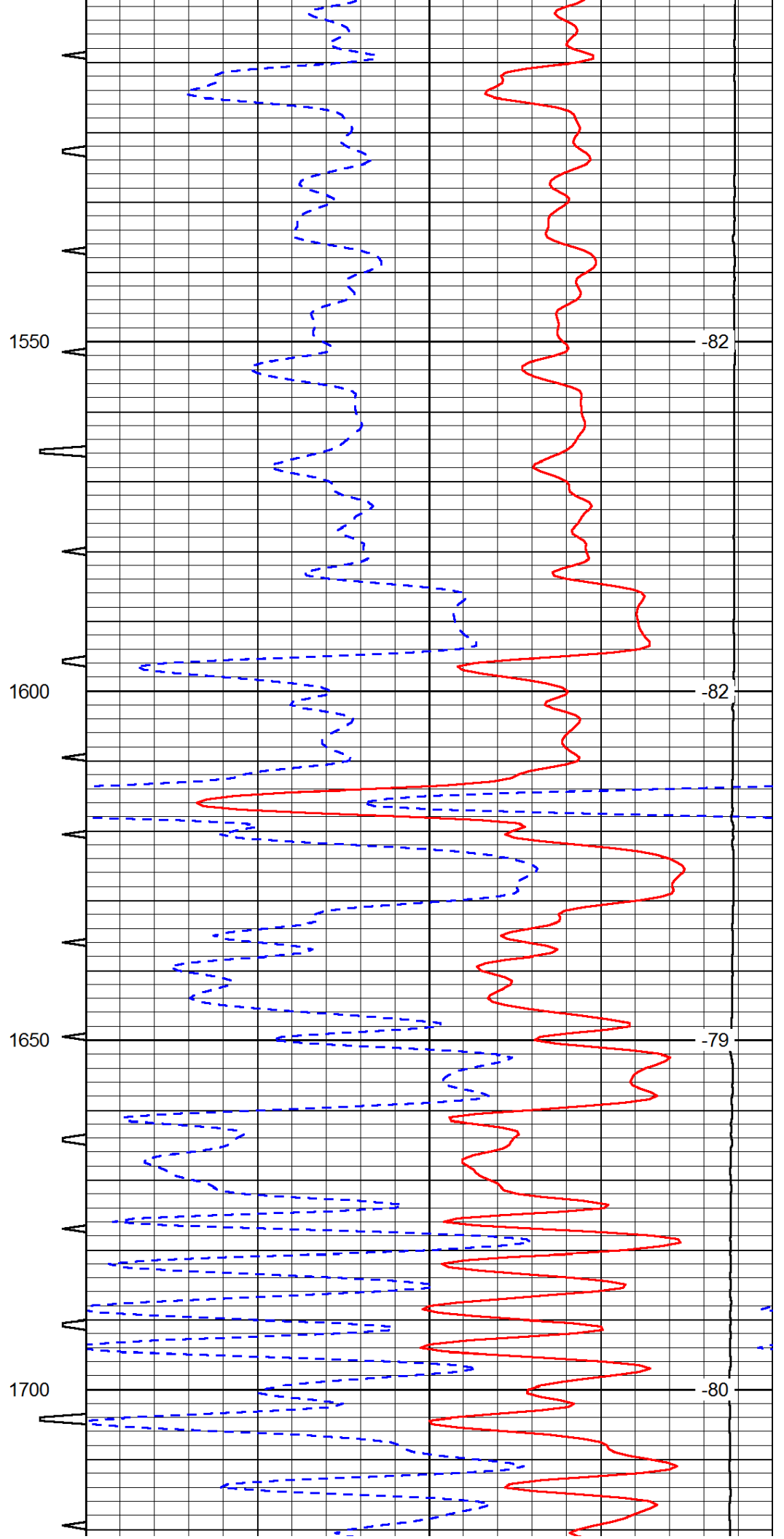
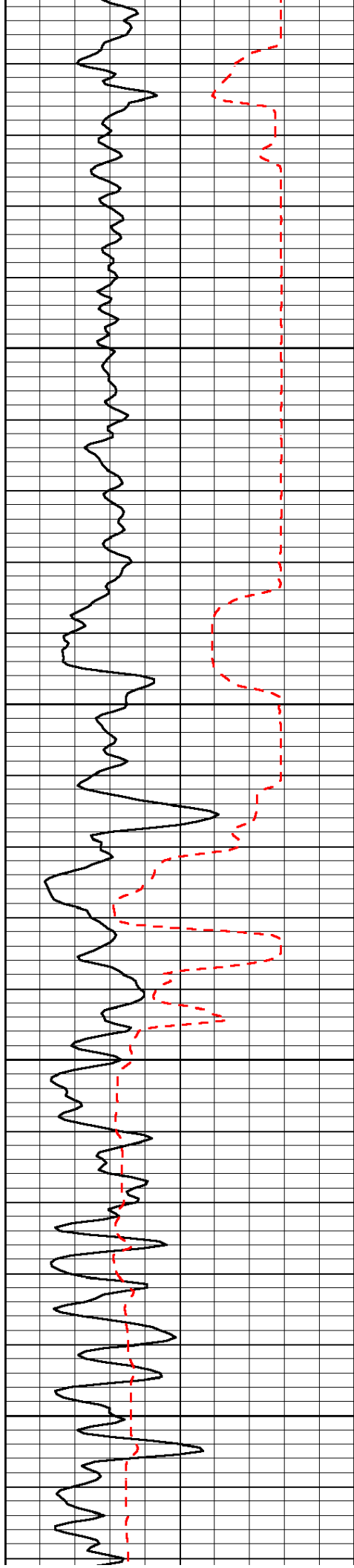
LSPD

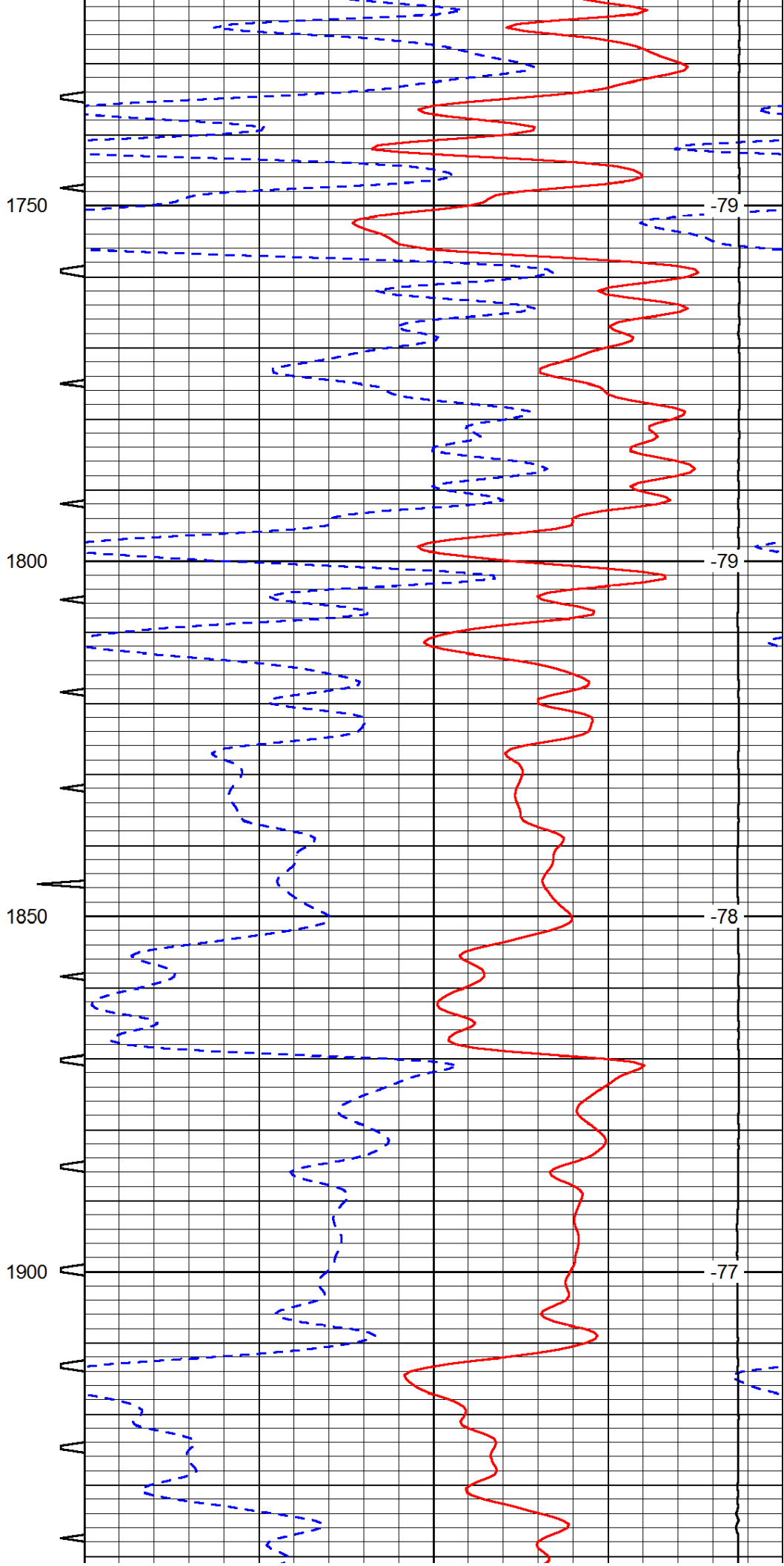
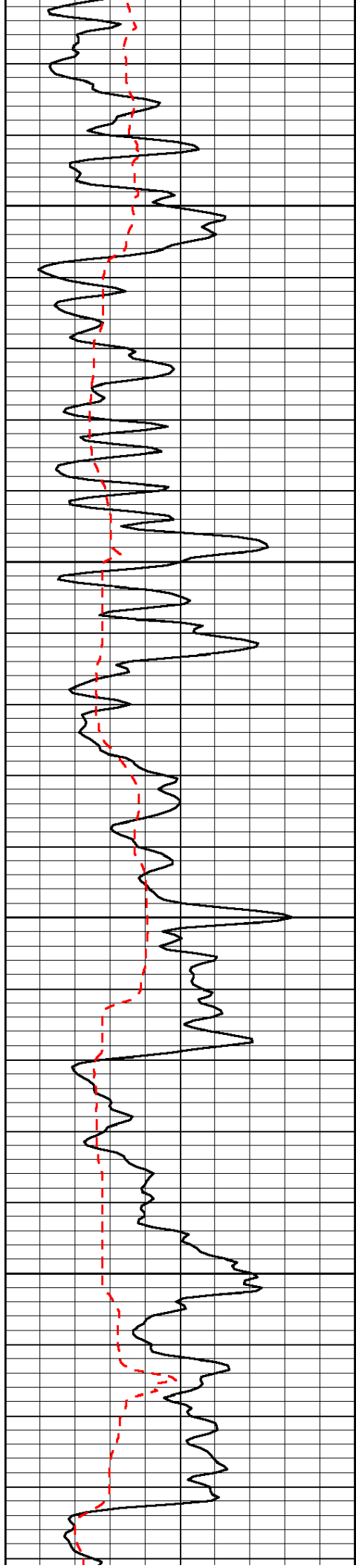


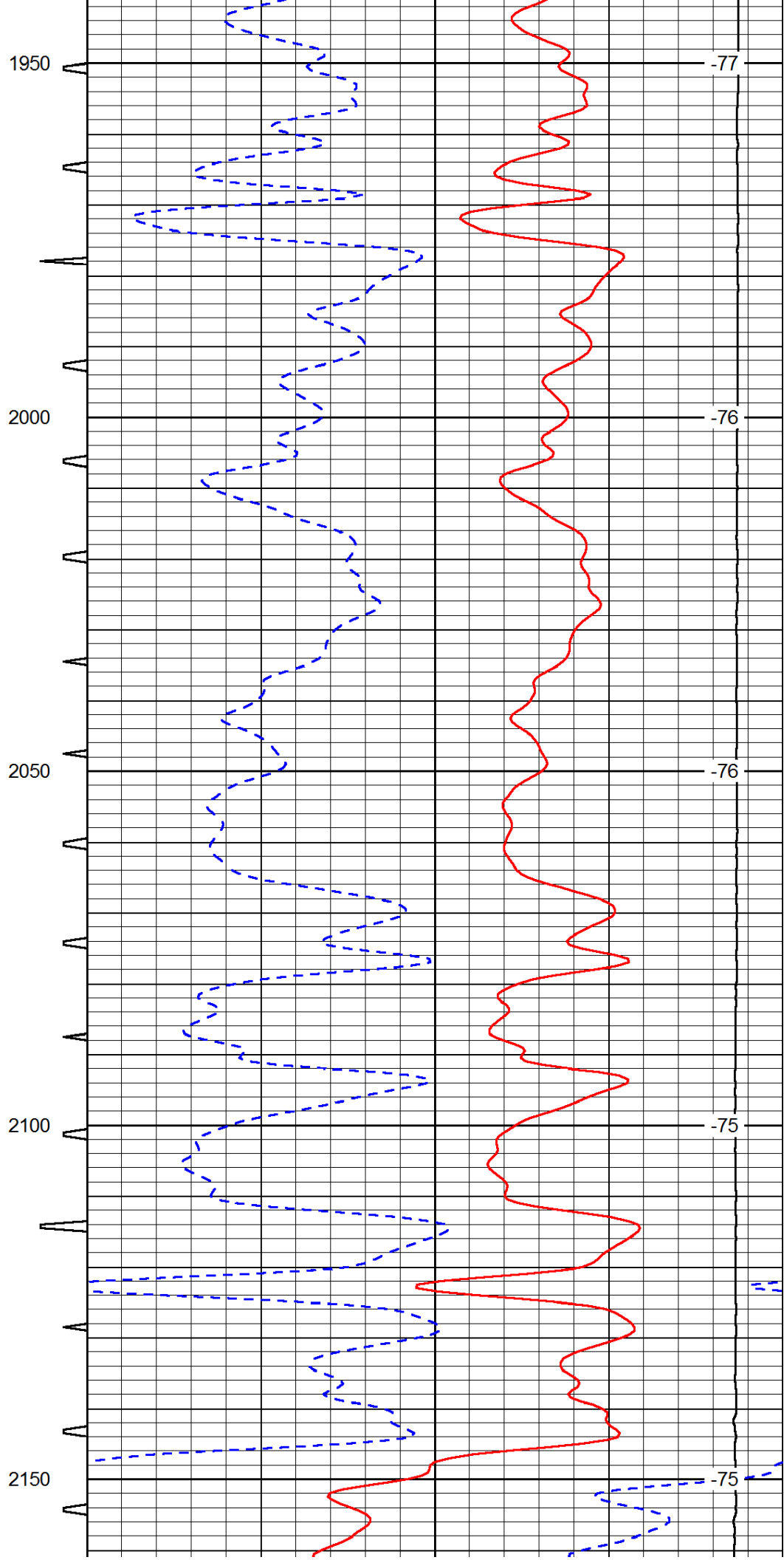
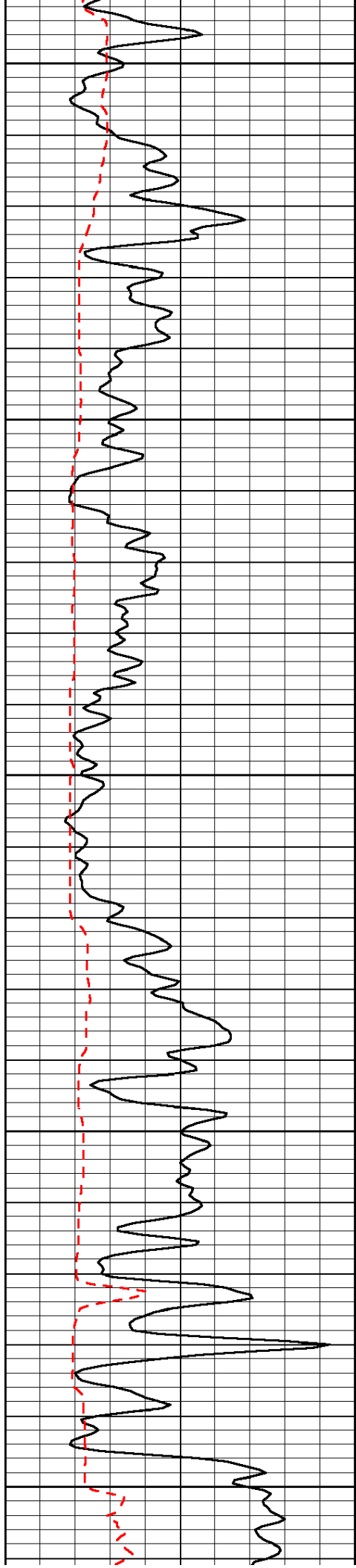


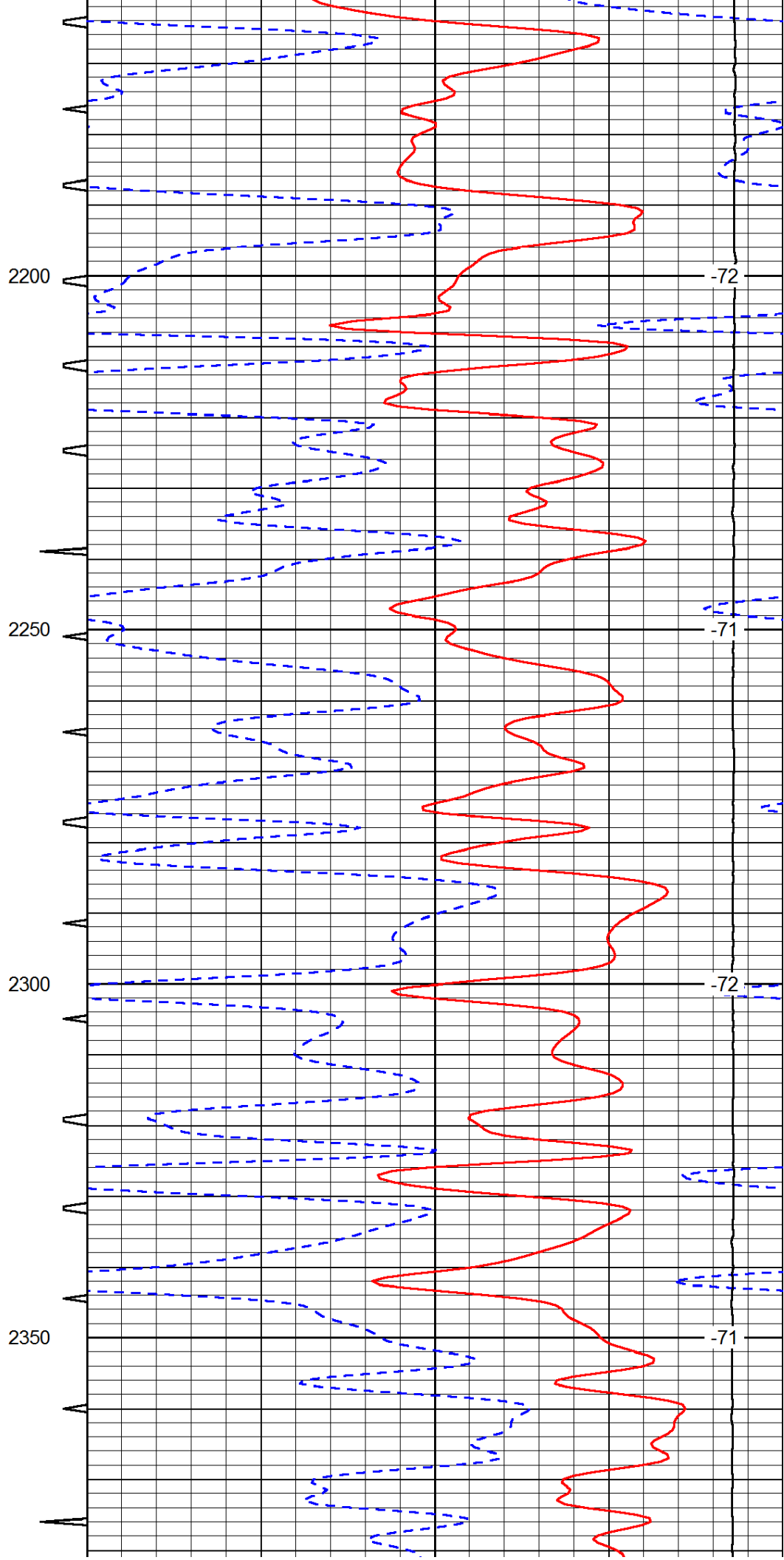
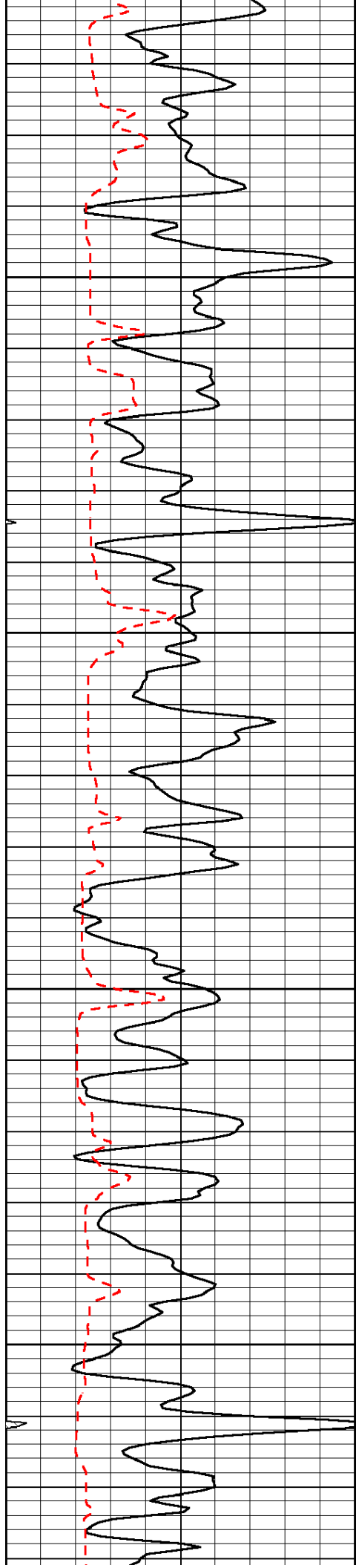


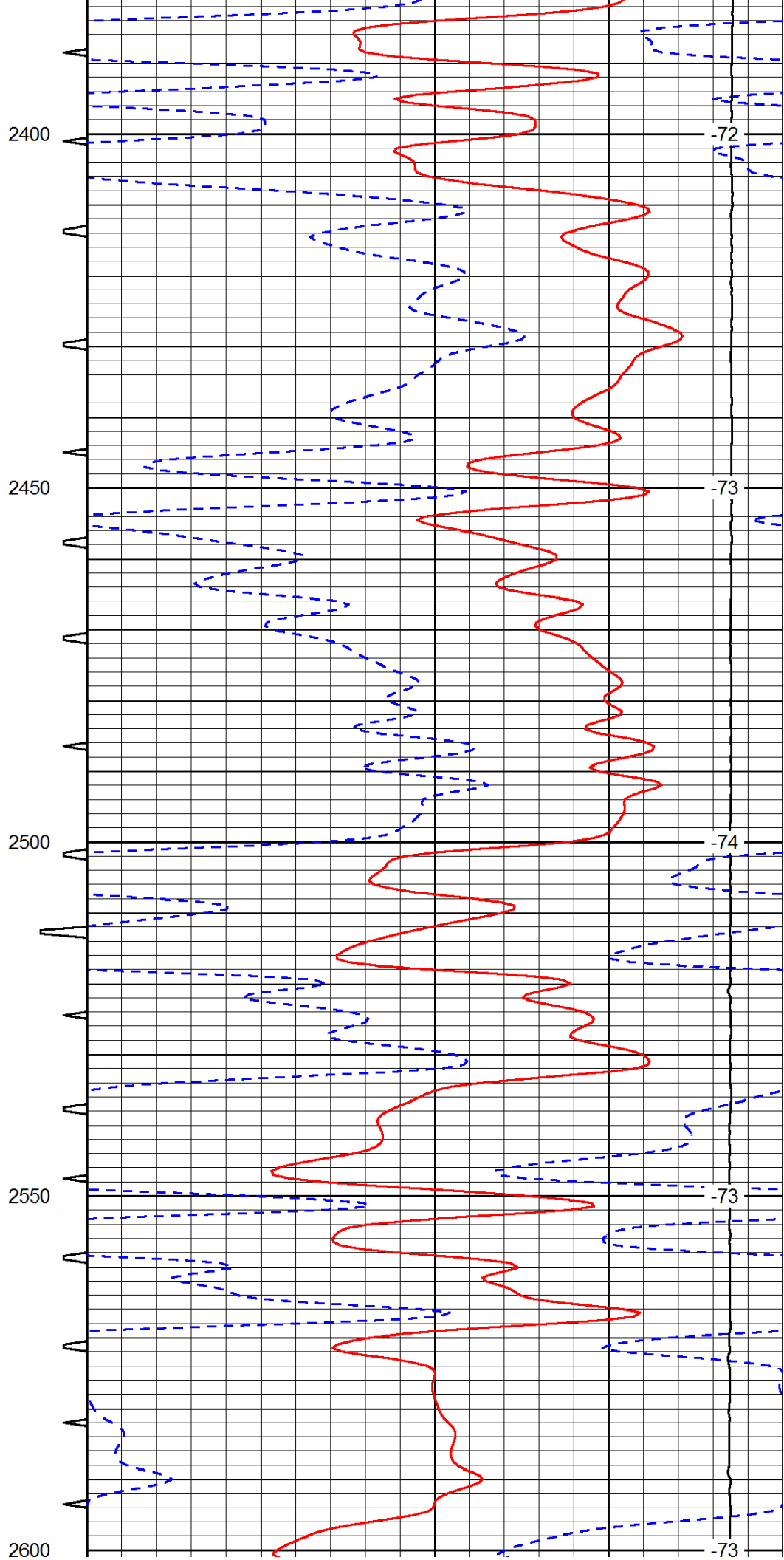
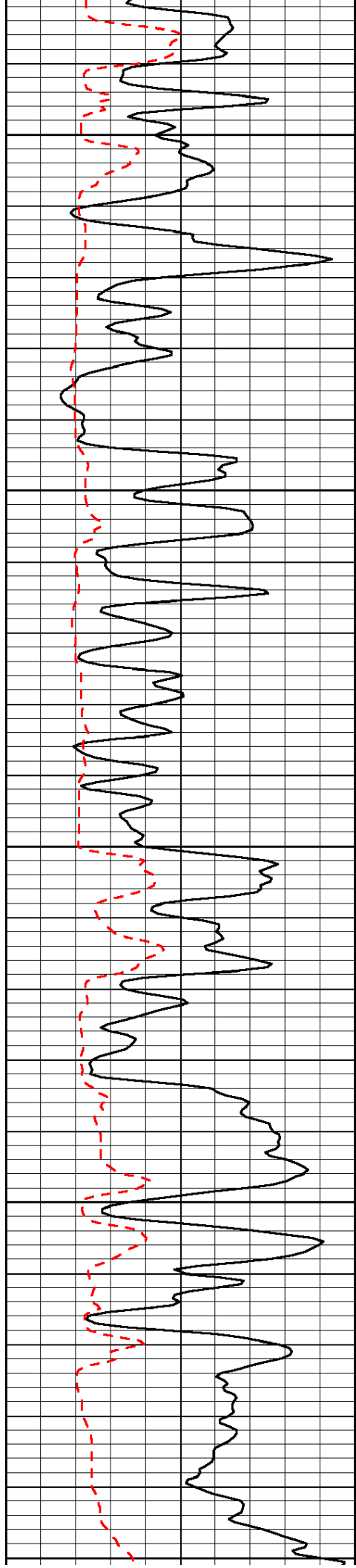


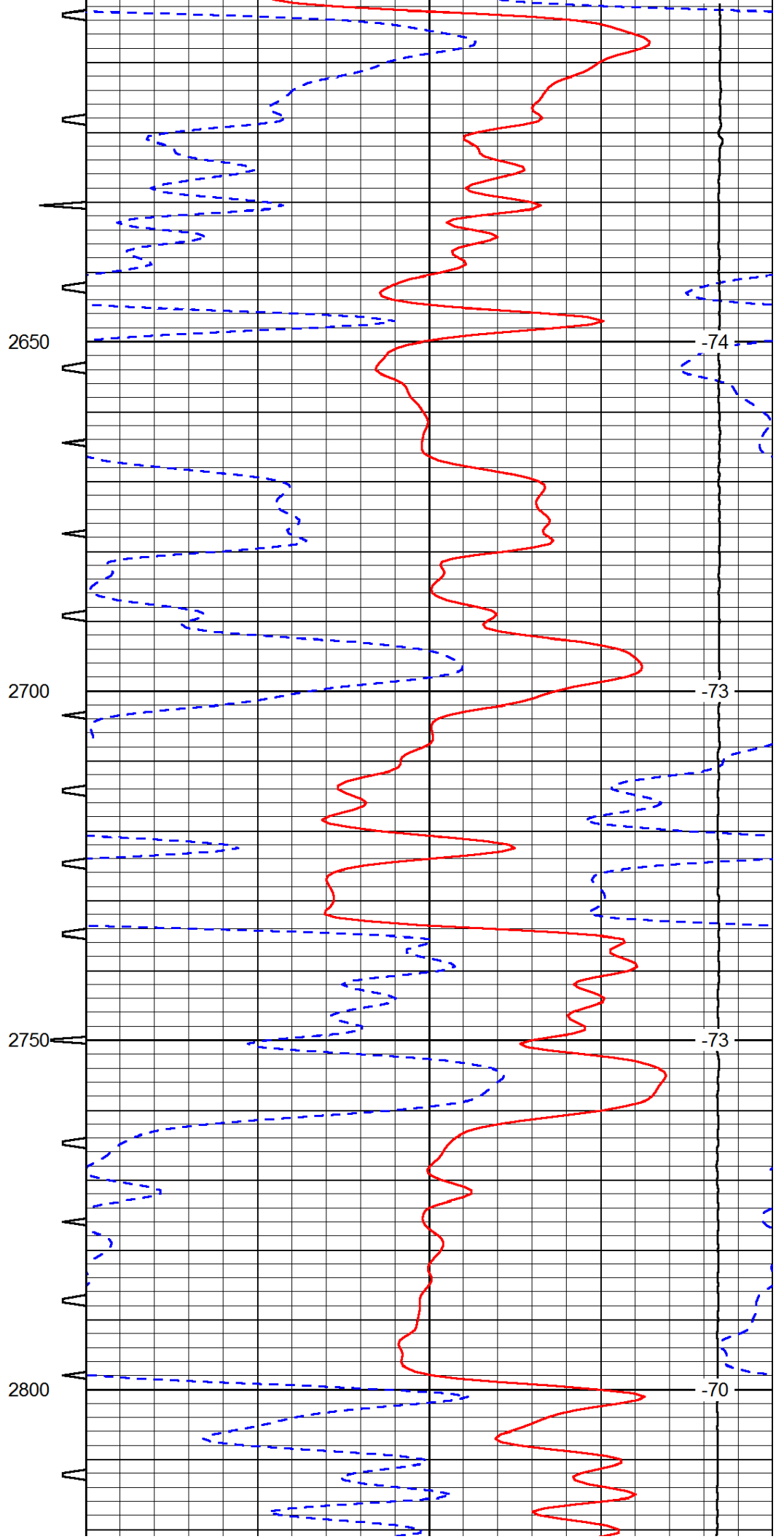
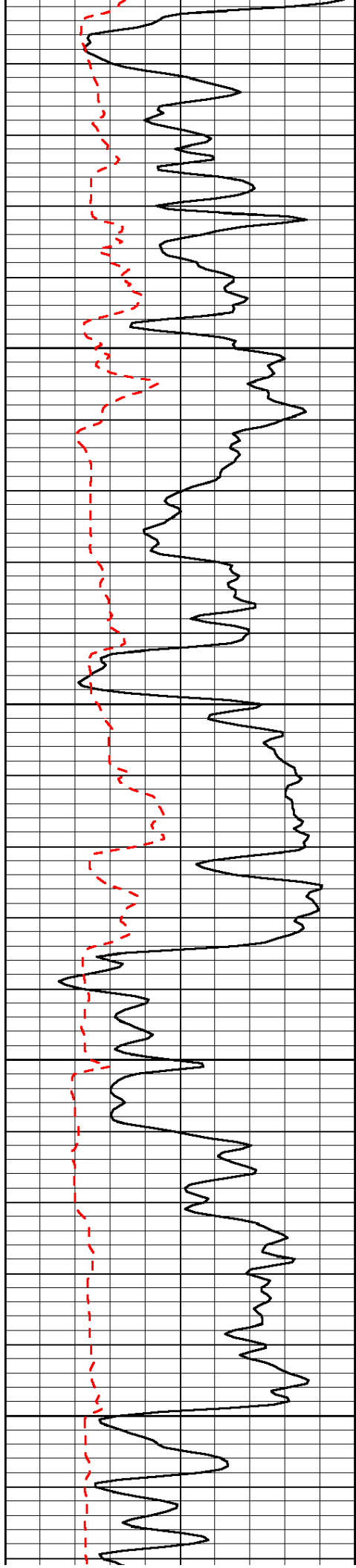


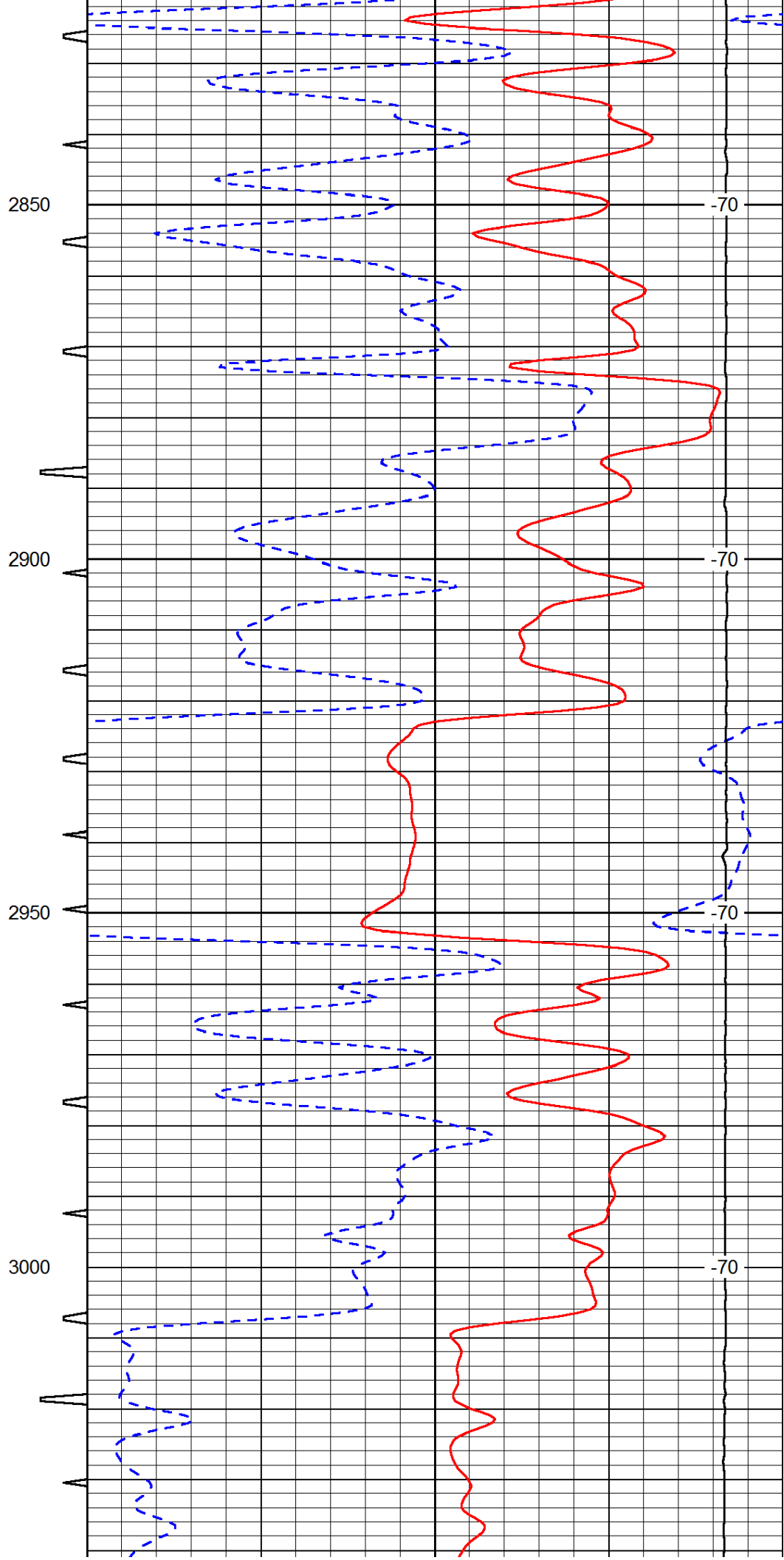
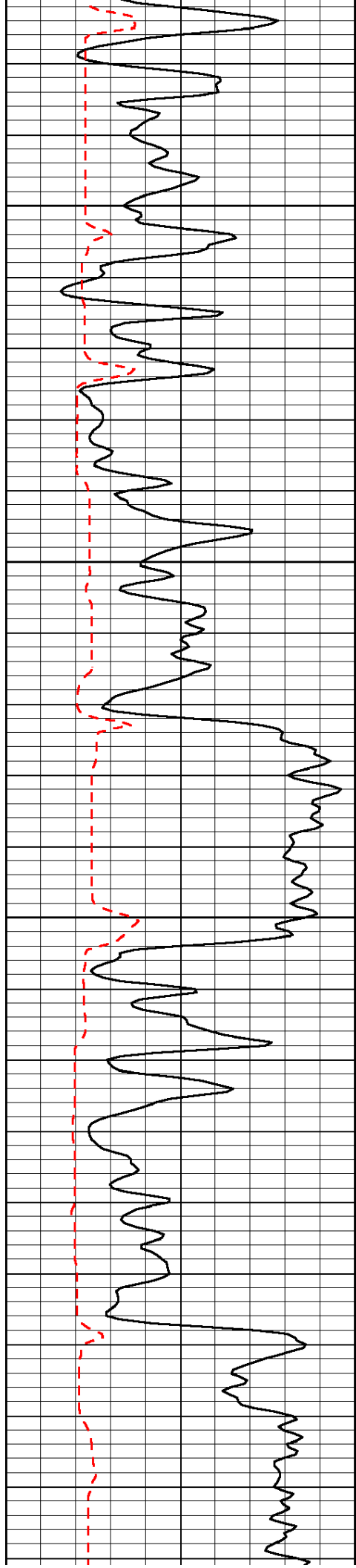


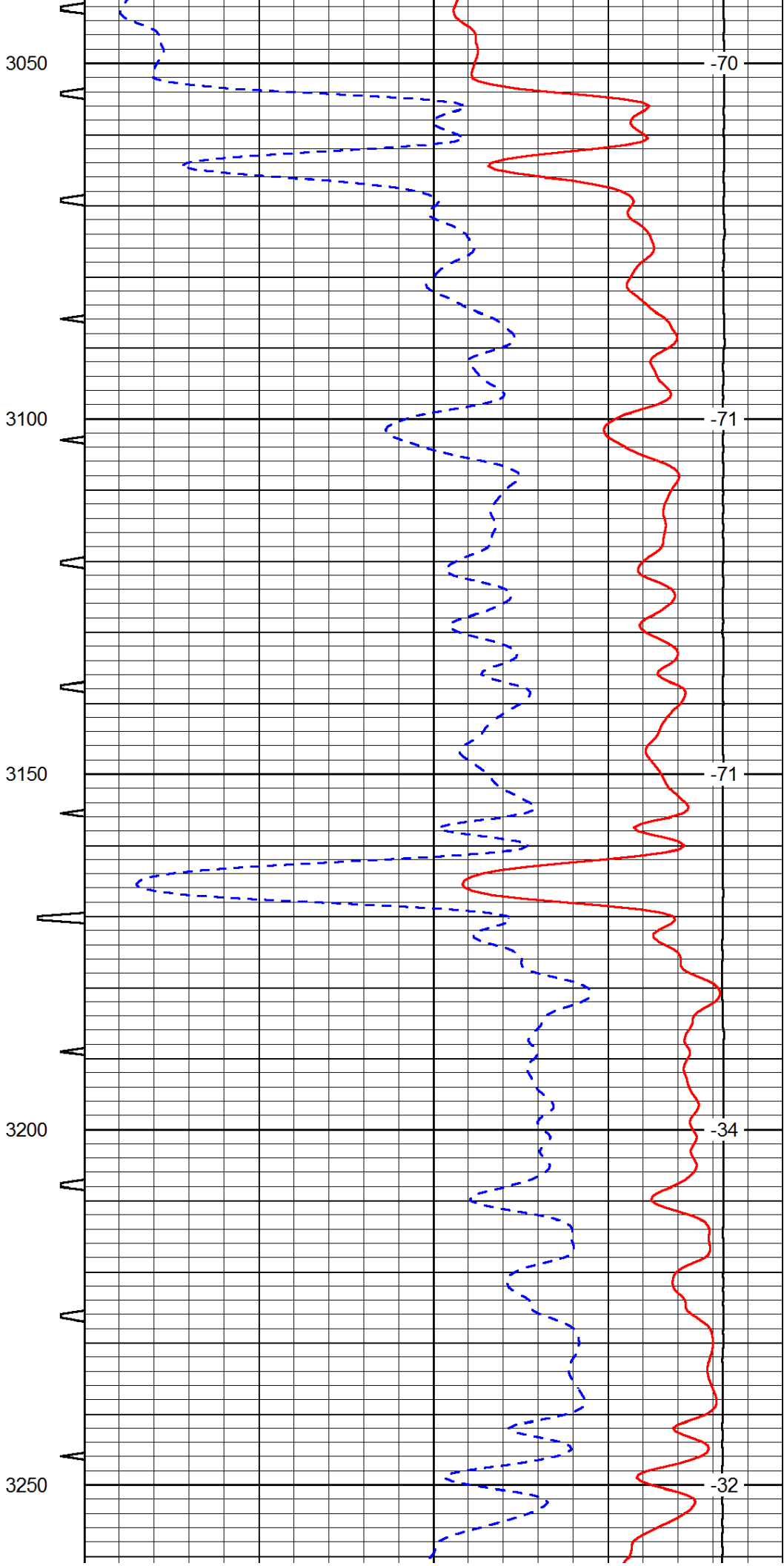
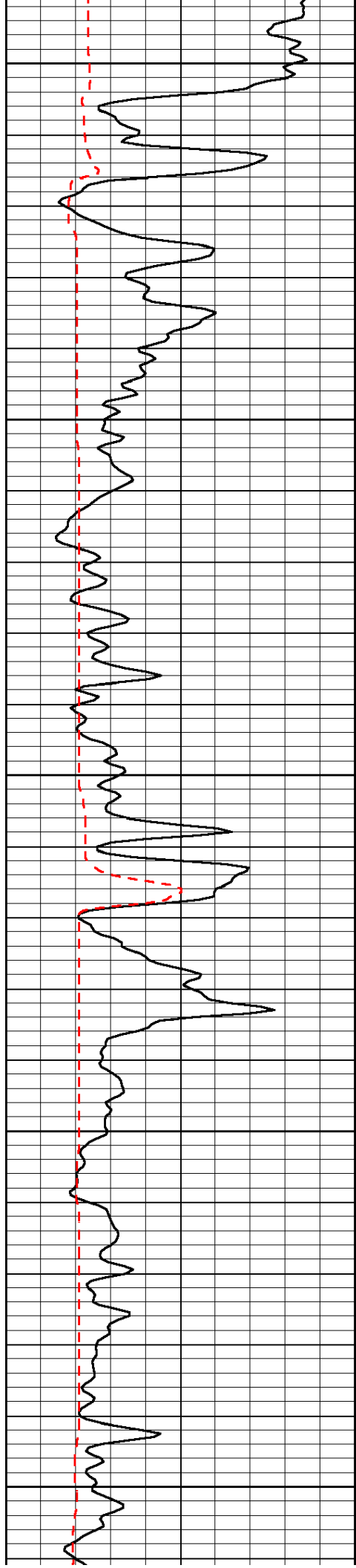


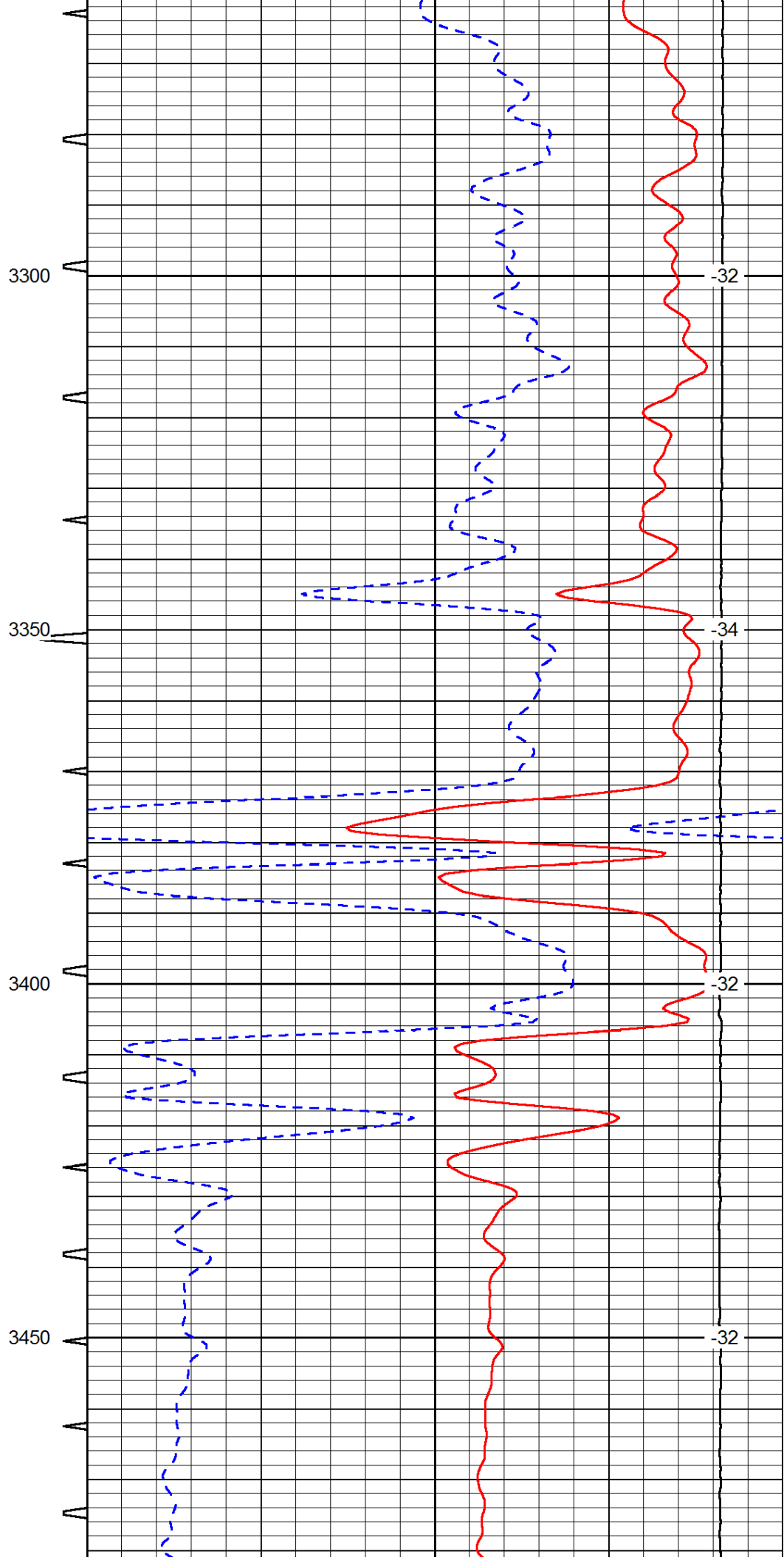
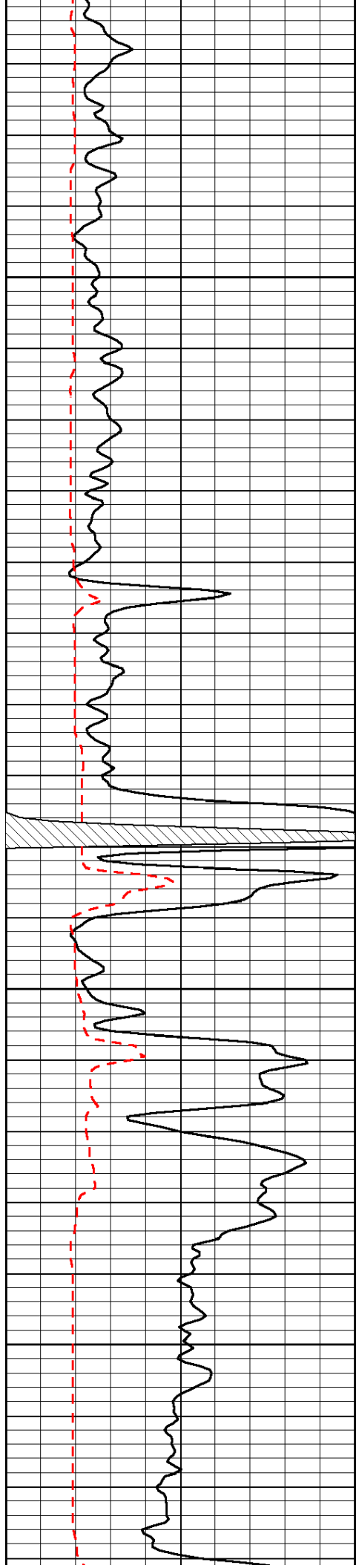


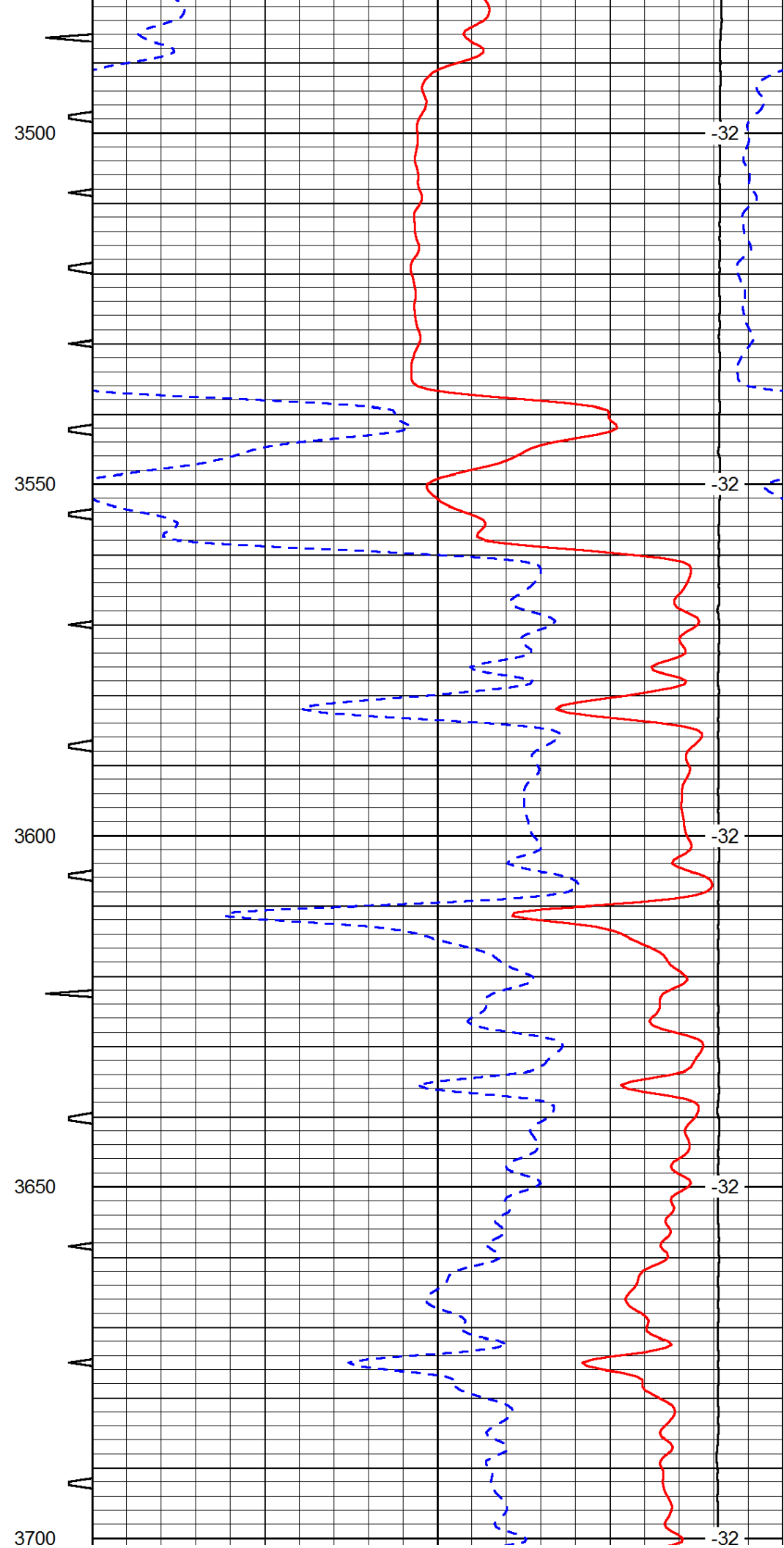
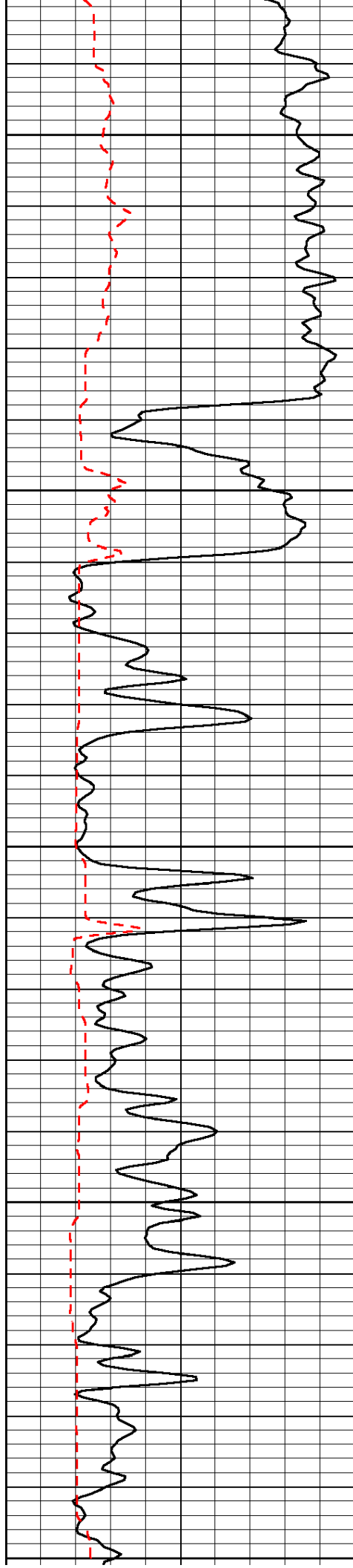


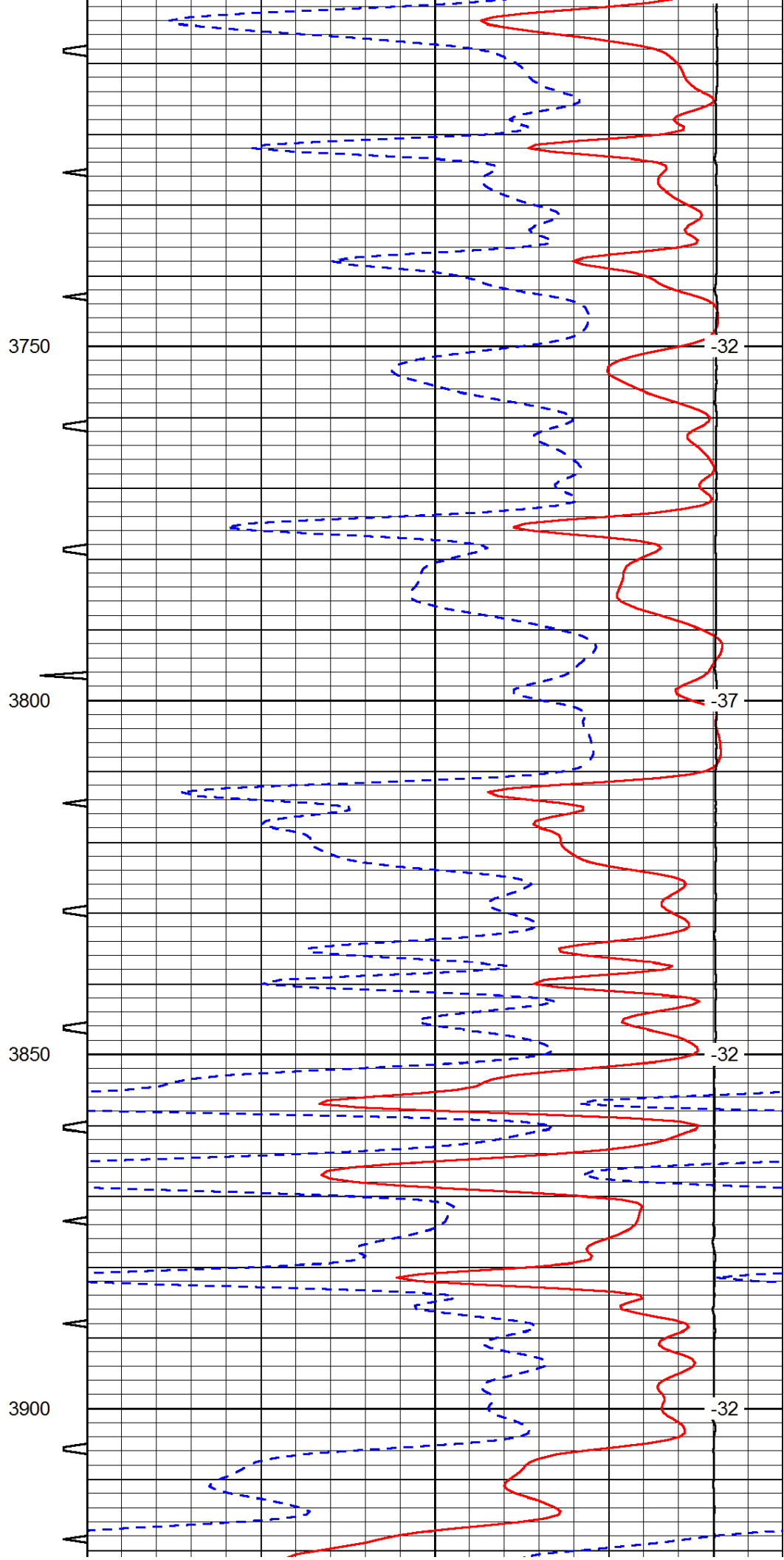
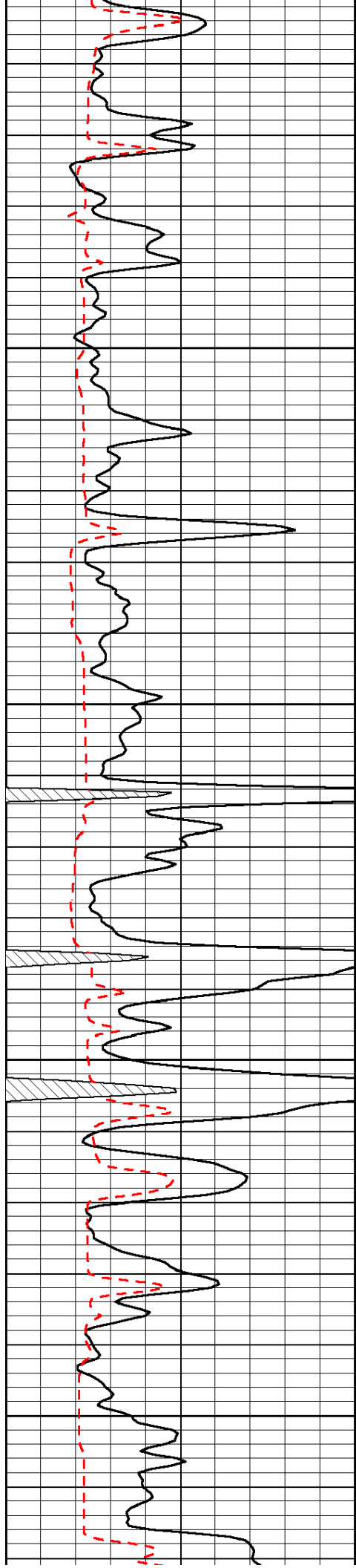


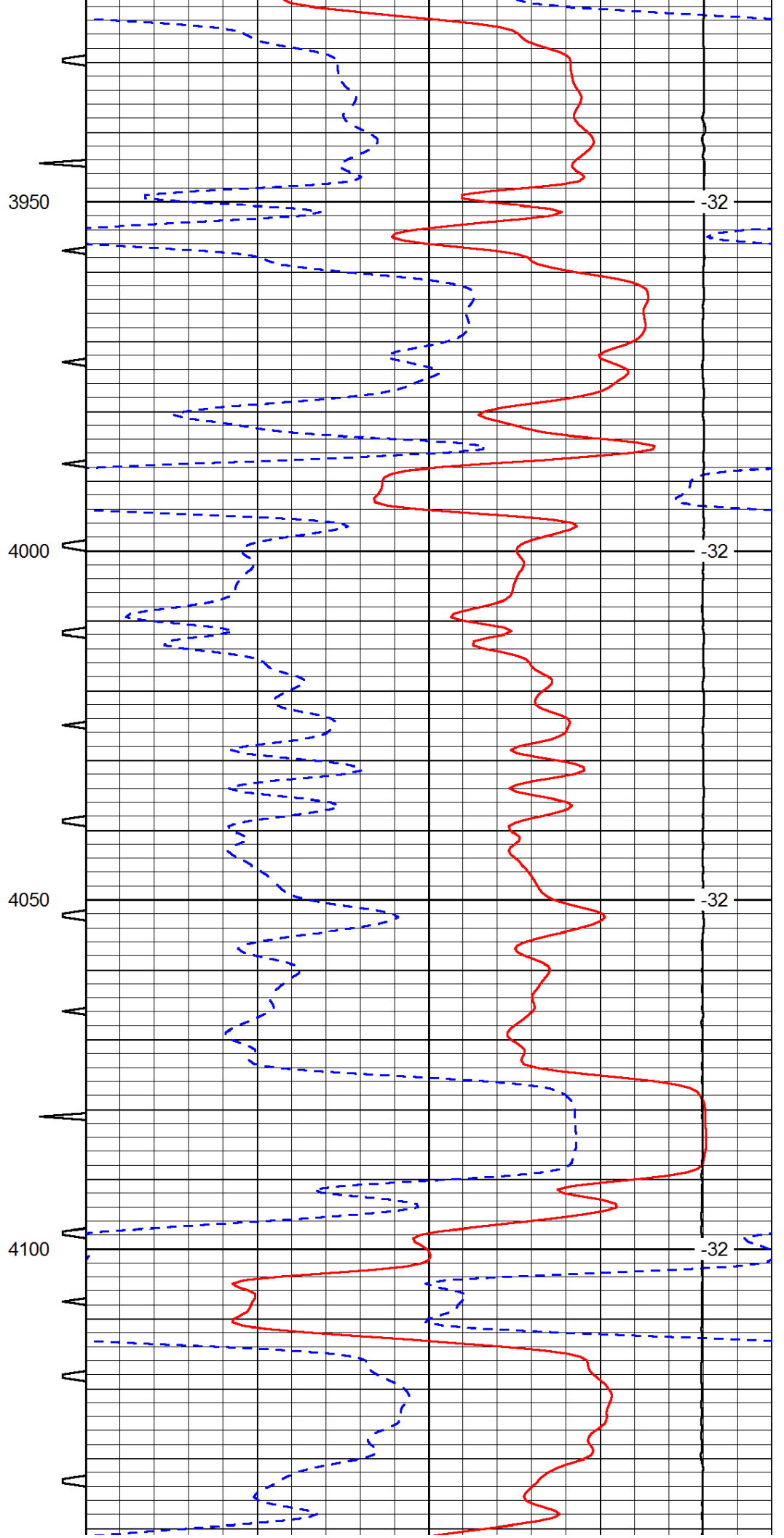
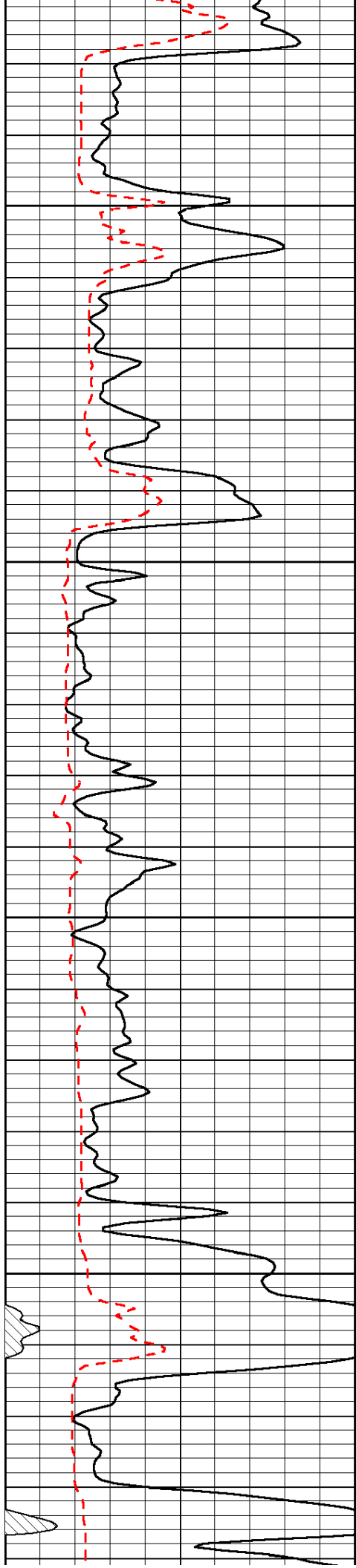


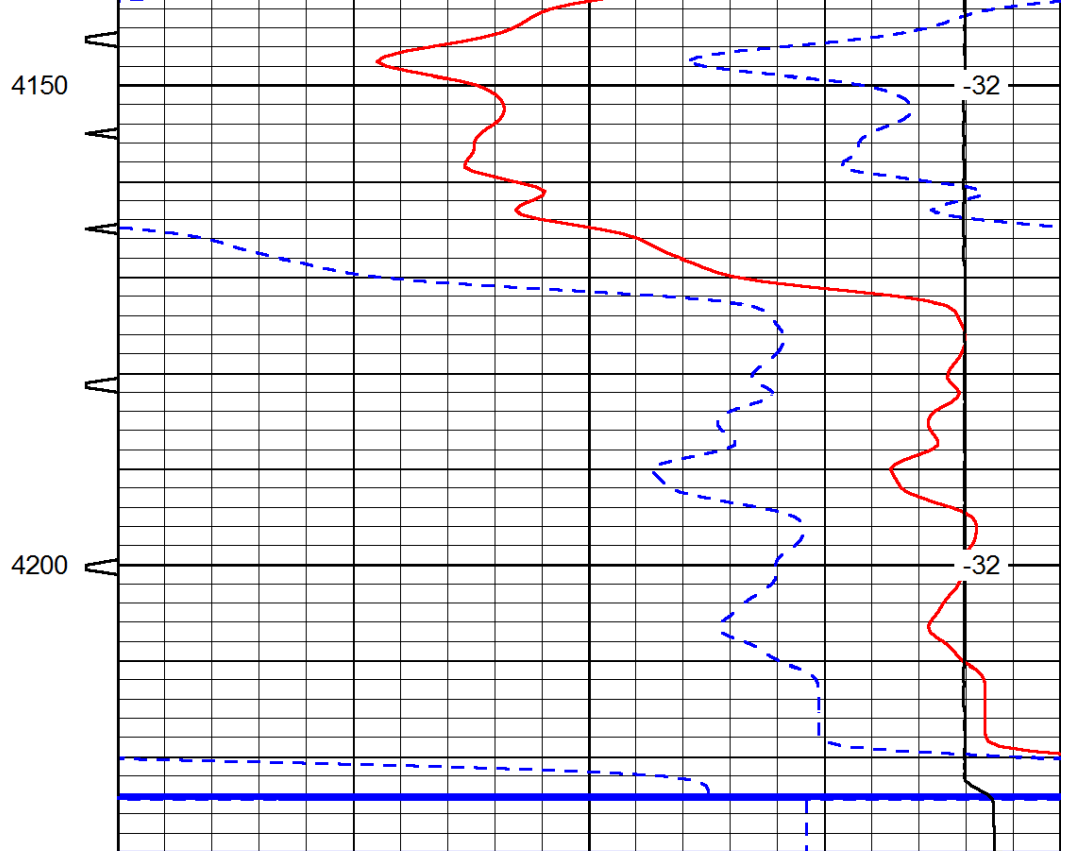
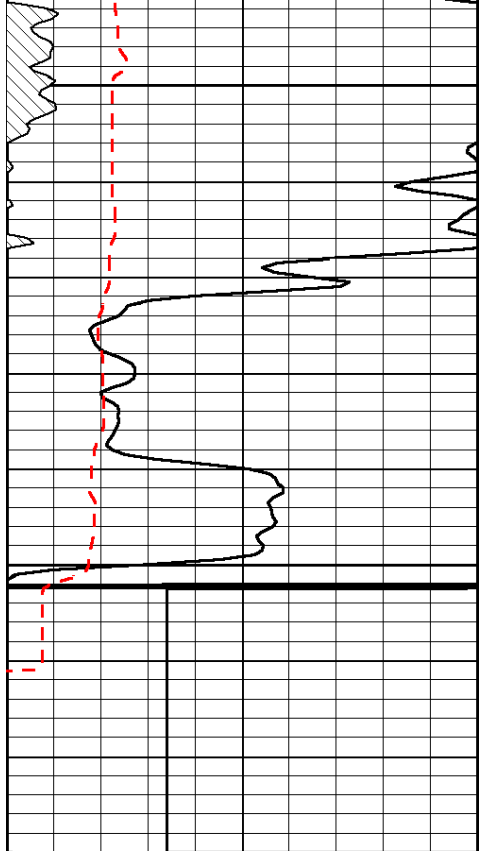












0	Gamma Ray	150	Sonic Int	140	Delta Time (usec/ft)	40
150	Gamma Ray	300	5	0	SPOR	-10
6	Caliper (GAPI)	16		15000	LTEN (lb)	0

LSPD