



Pioneer Energy Services

# Microresistivity Log

15-185-23,851-00-00

API No.

Company **H&D Exploration, LLC**

Well **Fisher #1**

Field

County **Stafford**

State

**Kansas**

Location

NE NE NE  
330' FNL & 330' FEL

Sec: 21 Twp: 25S Rge: 12W

Other Services  
CNL/CDL  
DIL/BHCS

Permanent Datum Ground Level Elevation 1860  
Log Measured From Kelly Bushing 8 Ft. Above Perm. Datum  
Drilling Measured From Kelly Bushing

Elevation  
K.B. 1868  
D.F.  
G.L. 1860

Date	1/20/2014
Run Number	Two
Depth Driller	4225
Depth Logger	4223
Bottom Logged Interval	4222
Top Log Interval	3200
Casing Driller	8.625 @ 680
Casing Logger	678
Bit Size	7.875
Type Fluid in Hole	Chemical
Salinity, ppm CL	13000
Density / Viscosity	9.0 64
pH / Fluid Loss	9.5 13.2
Source of Sample	Flowline
Rm @ Meas. Temp	.50 @ 58
Rmf @ Meas. Temp	.38 @ 58
Rmc @ Meas. Temp	.68 @ 58
Source of Rmf / Rmc	Charts
Rm @ BHT	.25 @ 118
Operating Rig Time	4 Hours
Max Rec. Temp. F	118
Equipment Number	108
Location	Hays
Recorded By	J. Long
Witnessed By	Scott Alberg

<<< Fold Here >>>

All interpretations are opinions based on inferences from electrical or other measurements and we cannot and do not guarantee the accuracy or correctness of any interpretation, and we shall not, except in the case of gross or willful negligence on our part, be liable or responsible for any loss, costs, damages, or expenses incurred or sustained by anyone resulting from any interpretation made by any of our officers, agents or employees. These interpretations are also subject to our general terms and conditions set out in our current Price Schedule.

Comments

Thank you for using Pioneer Energy Services  
www.pioneerres.com  
785 625 3858

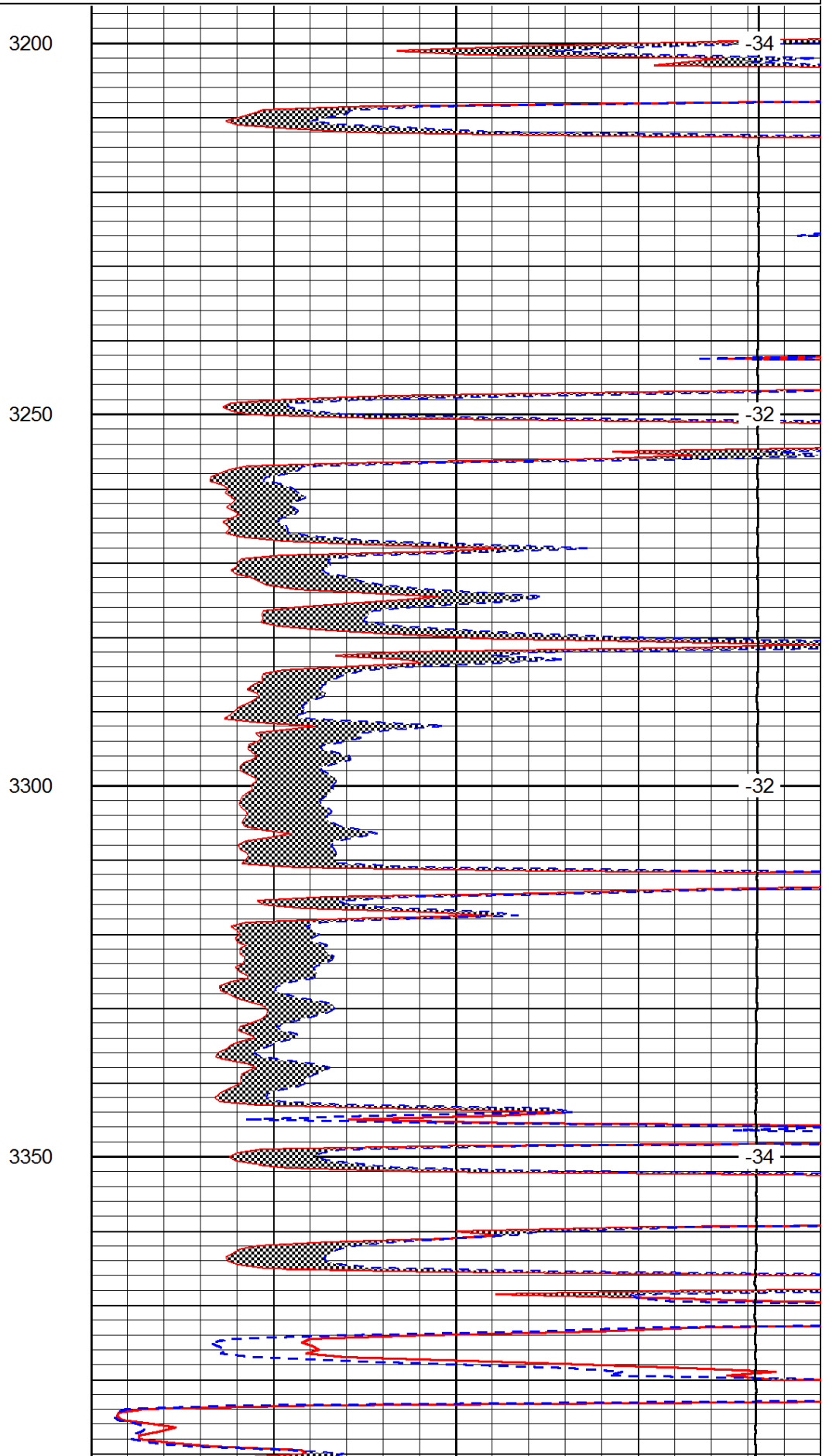
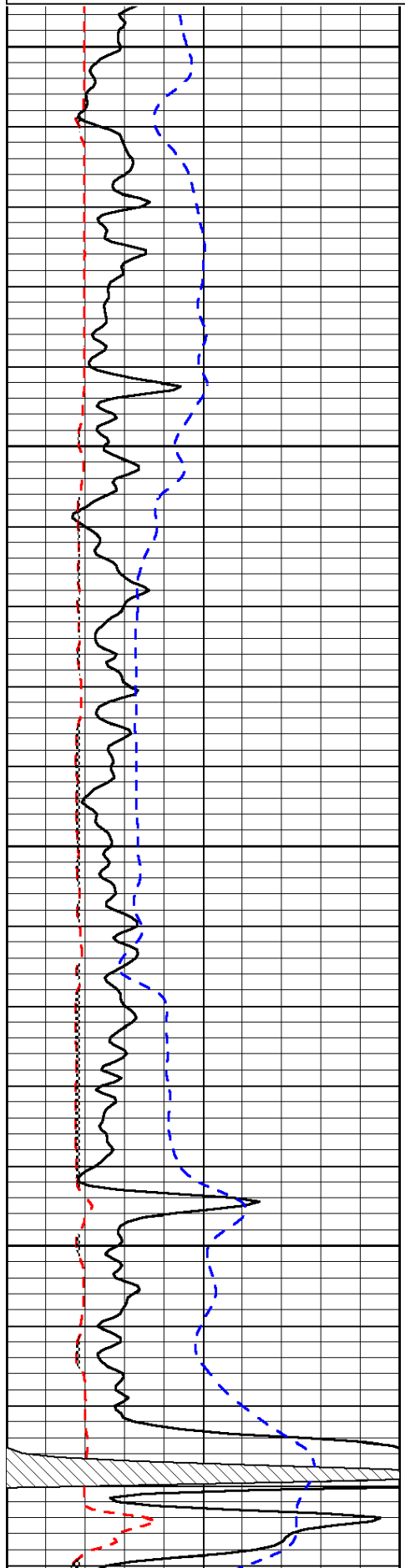
Stafford, 6 South to 60th Road, 2 West, 300' South, West Into

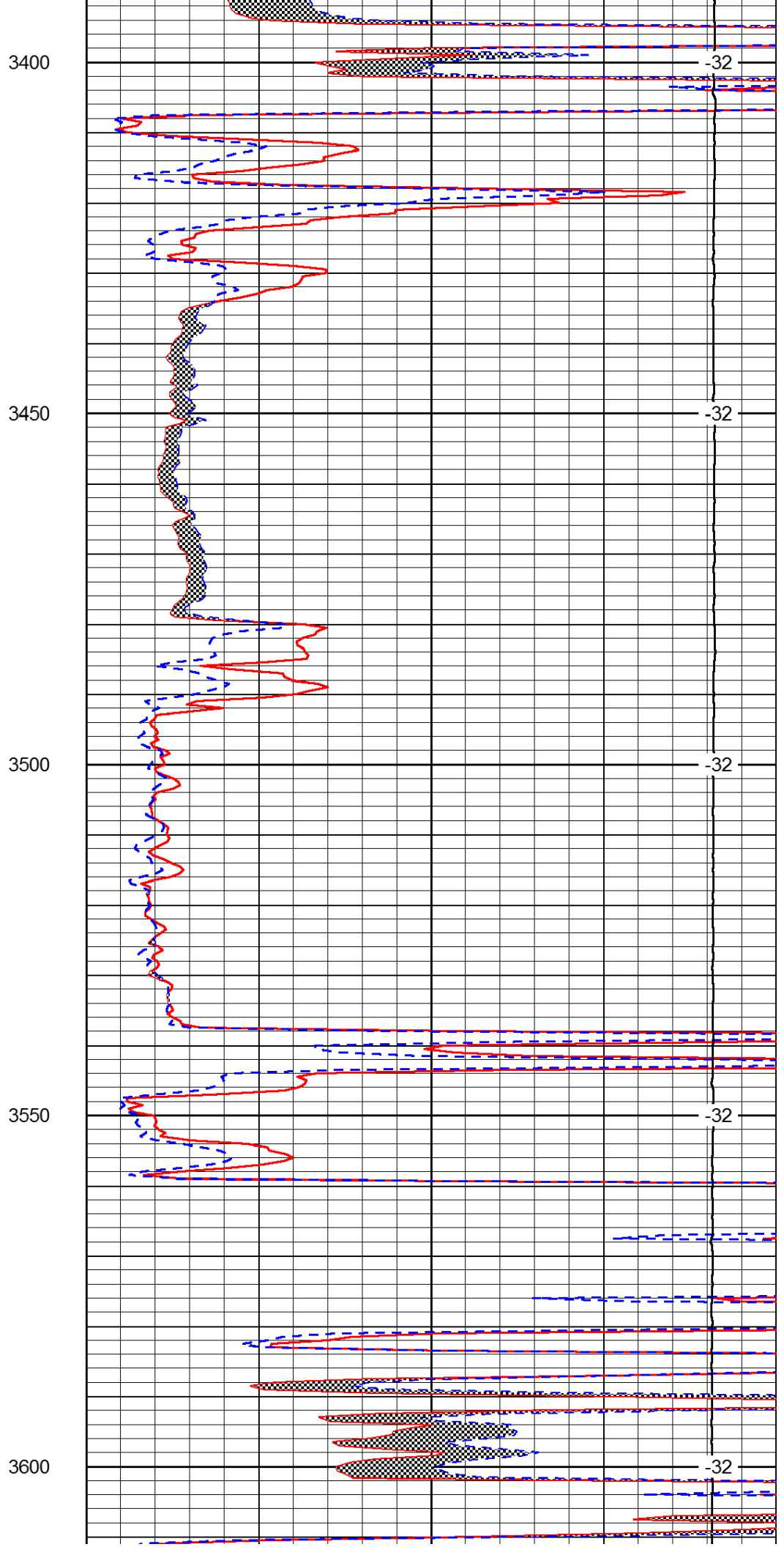
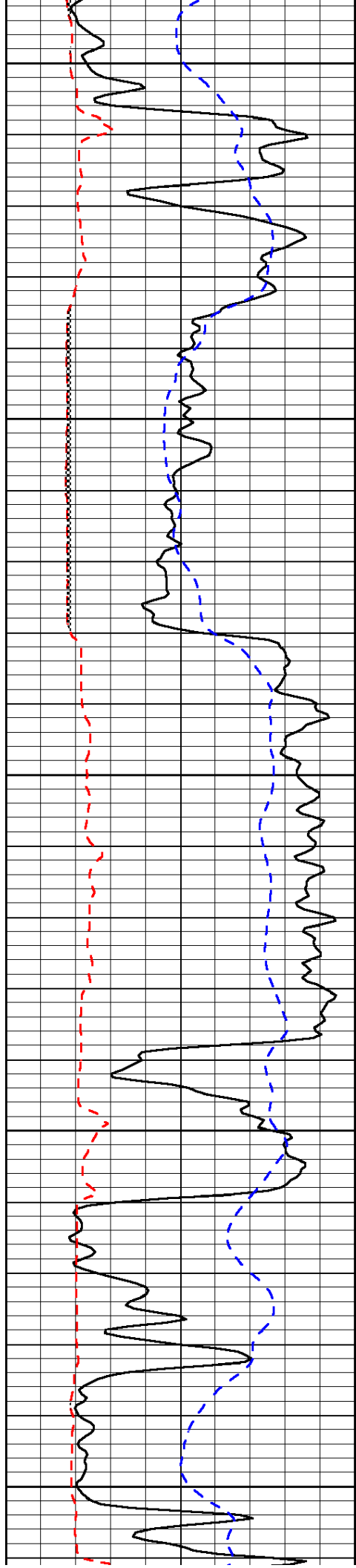
Database File: c:\warrior\data\h&d\_fisher #1\h&d\_fisher\_1hd.db  
 Dataset Pathname: dil/hdstck  
 Presentation Format: micro  
 Dataset Creation: Mon Jan 20 21:28:38 2014  
 Charted by: Depth in Feet scaled 1:240

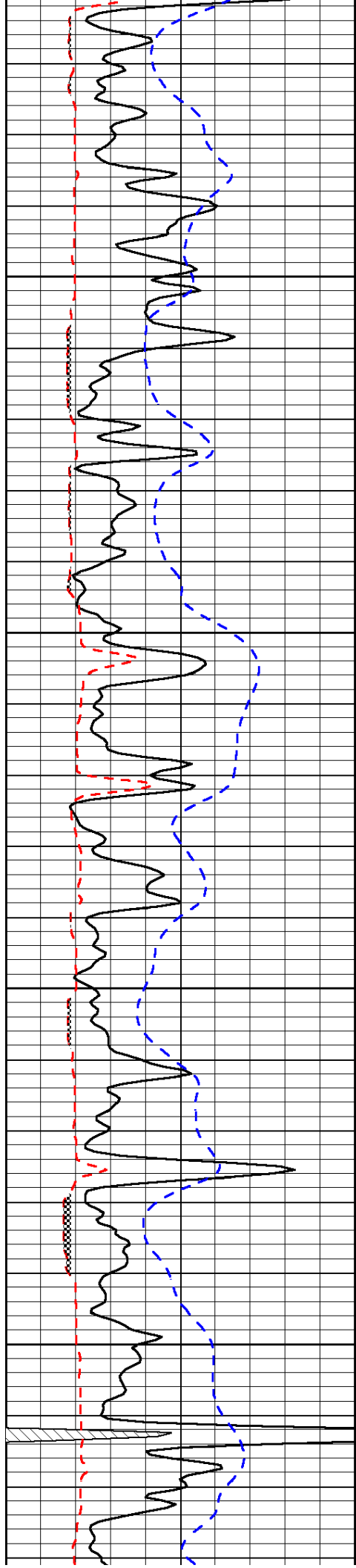
0	Gamma Ray	150
6	Micro Log Caliper (GAPI)	16
-200	SP (mV)	0

0	Micro Inverse 1 X 1	40
0	Micro Normal 2"	40
15000	Line Weight	0

LSPD





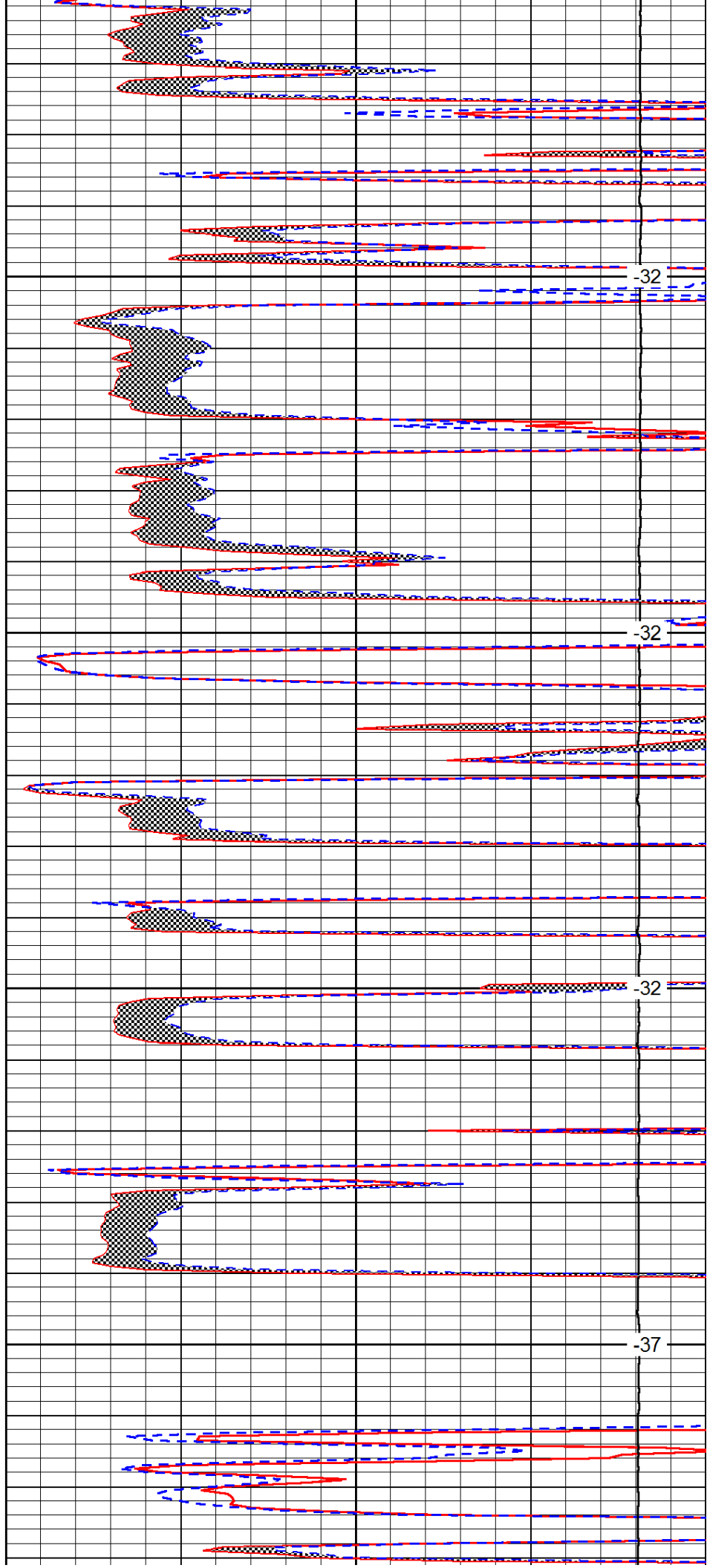


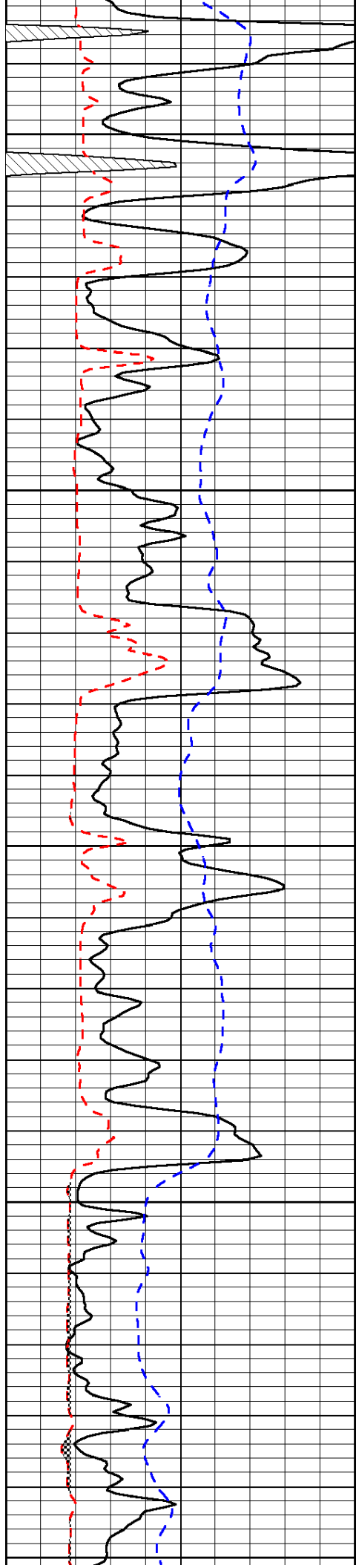
3650

3700

3750

3800





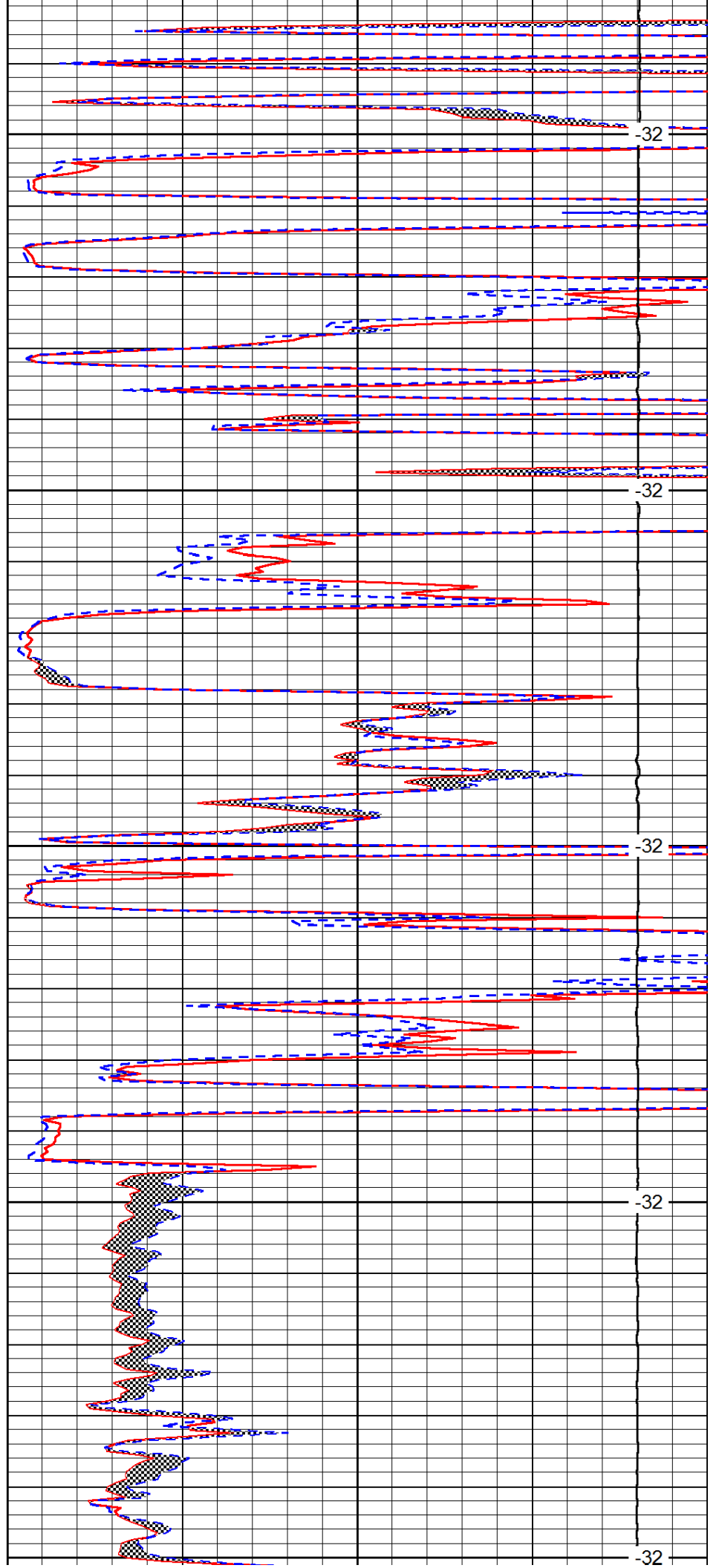
3850

3900

3950

4000

4050



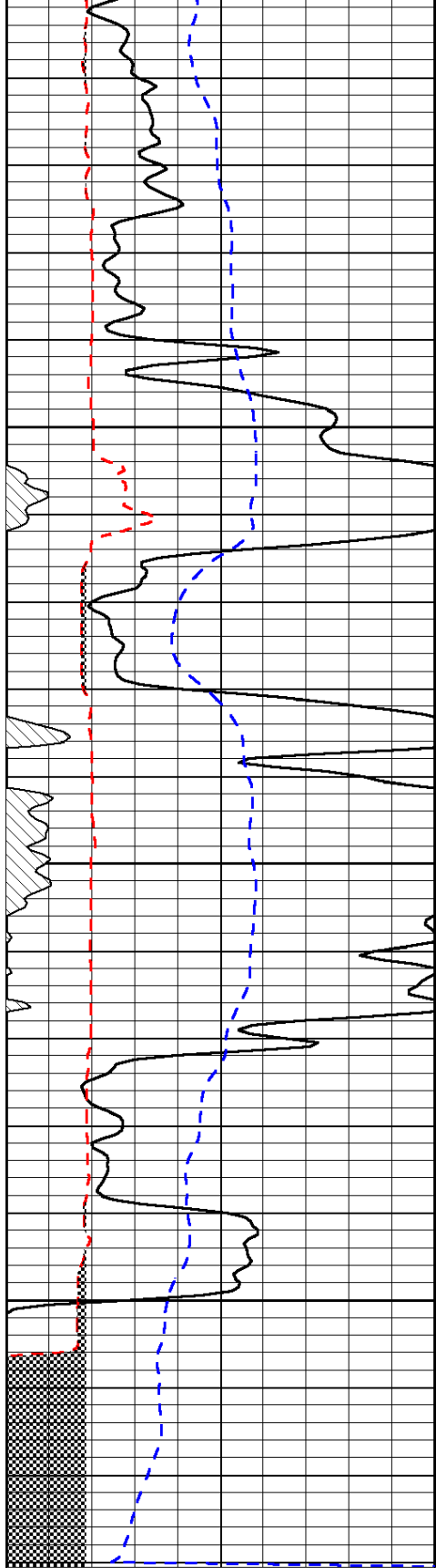
-32

-32

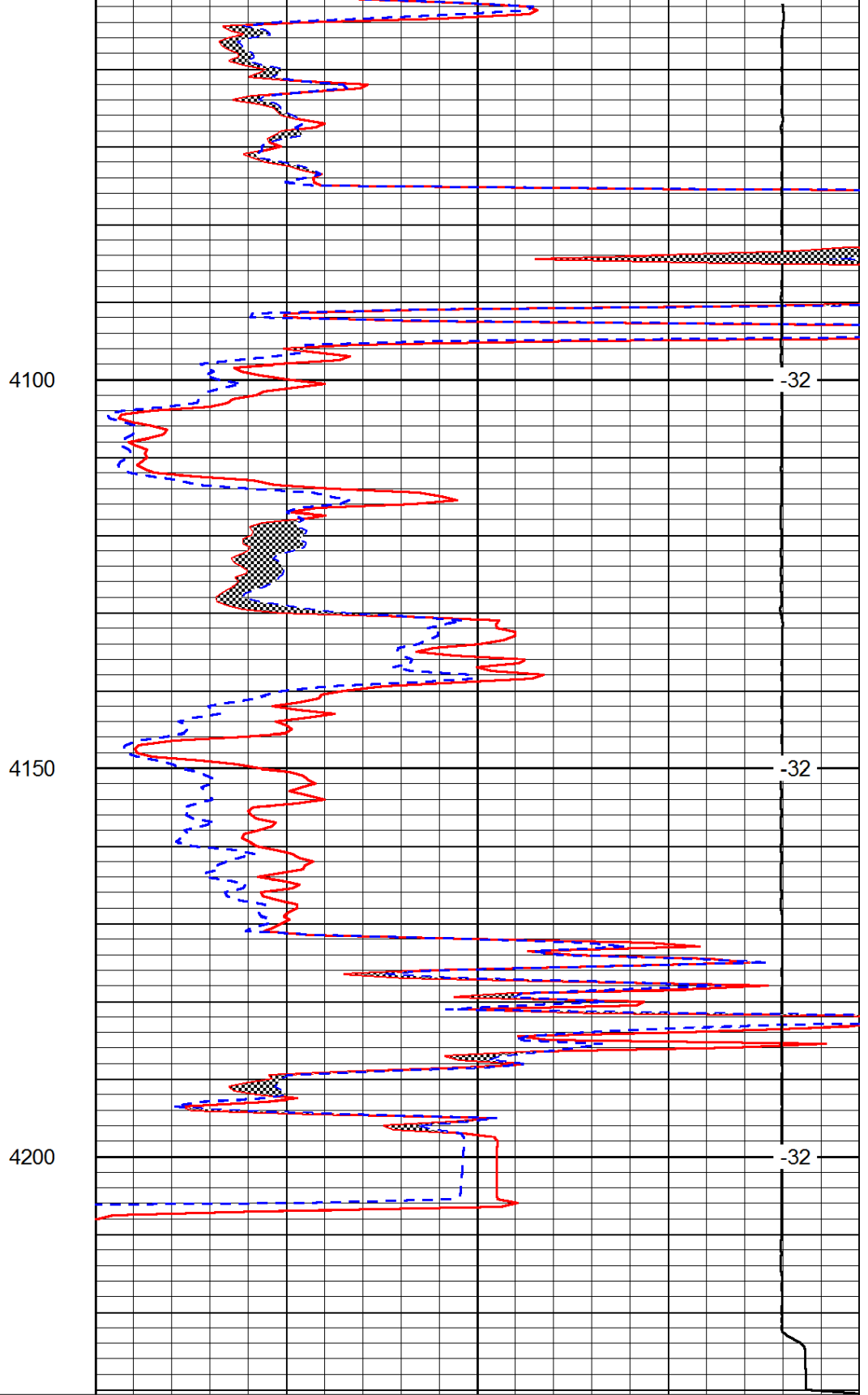
-32

-32

-32



0	Gamma Ray	150
6	Micro Log Caliper (GAPI)	16
-200	SP (mV)	0



0	Micro Inverse 1 X 1	40
0	Micro Normal 2''	40
15000	Line Weight	0

LSPD