



Pioneer Energy Services

## Dual Compensated Porosity Log

15-185-23,851-00-00

API No.

Company **H&D Exploration, LLC**

Well **Fisher #1**

Field

County **Stafford**

State **Kansas**

Location  
**NE NE NE  
330' FNL & 330' FEL**

Sec: **21** Twp: **25S** Rge: **12W**

Other Services  
**DIL  
MEI/BHCS**

Elevation

**K.B. 1868  
D.F.  
G.L. 1860**

Permanent Datum **Ground Level** Elevation **1860**  
Log Measured From **Kelly Bushing** **8** Ft. Above Perm. Datum  
Drilling Measured From **Kelly Bushing**

Date **1/20/2014**

Run Number **One**

Type Log **CNL / CDL**

Depth Driller **4225**

Depth Logger **4223**

Bottom Logged Interval **4202**

Top Logged Interval **3200**

Type Fluid In Hole **Chemical**

Salinity, PPM CL **13000**

Density **9.0**

Level **Full**

Max. Rec. Temp. F **118**

Operating Rig Time **4 Hours**

Equipment -- Location **108 Hays**

Recorded By **J. Long**

Witnessed By **Scott Alberg**

**Borehole Record**

**Casing Record**

Run No.	Bit	From	To	Size	Wgt.	From	To
1	12.25	00	680	8.625	24#	00	680
2	7.875	680	4225				

<<< Fold Here >>>

All interpretations are opinions based on inferences from electrical or other measurements and we cannot and do not guarantee the accuracy or correctness of any interpretation, and we shall not, except in the case of gross or willful negligence on our part, be liable or responsible for any loss, costs, damages, or expenses incurred or sustained by anyone resulting from any interpretation made by any of our officers, agents or employees. These interpretations are also subject to our general terms and conditions set out in our current Price Schedule.

**Comments**

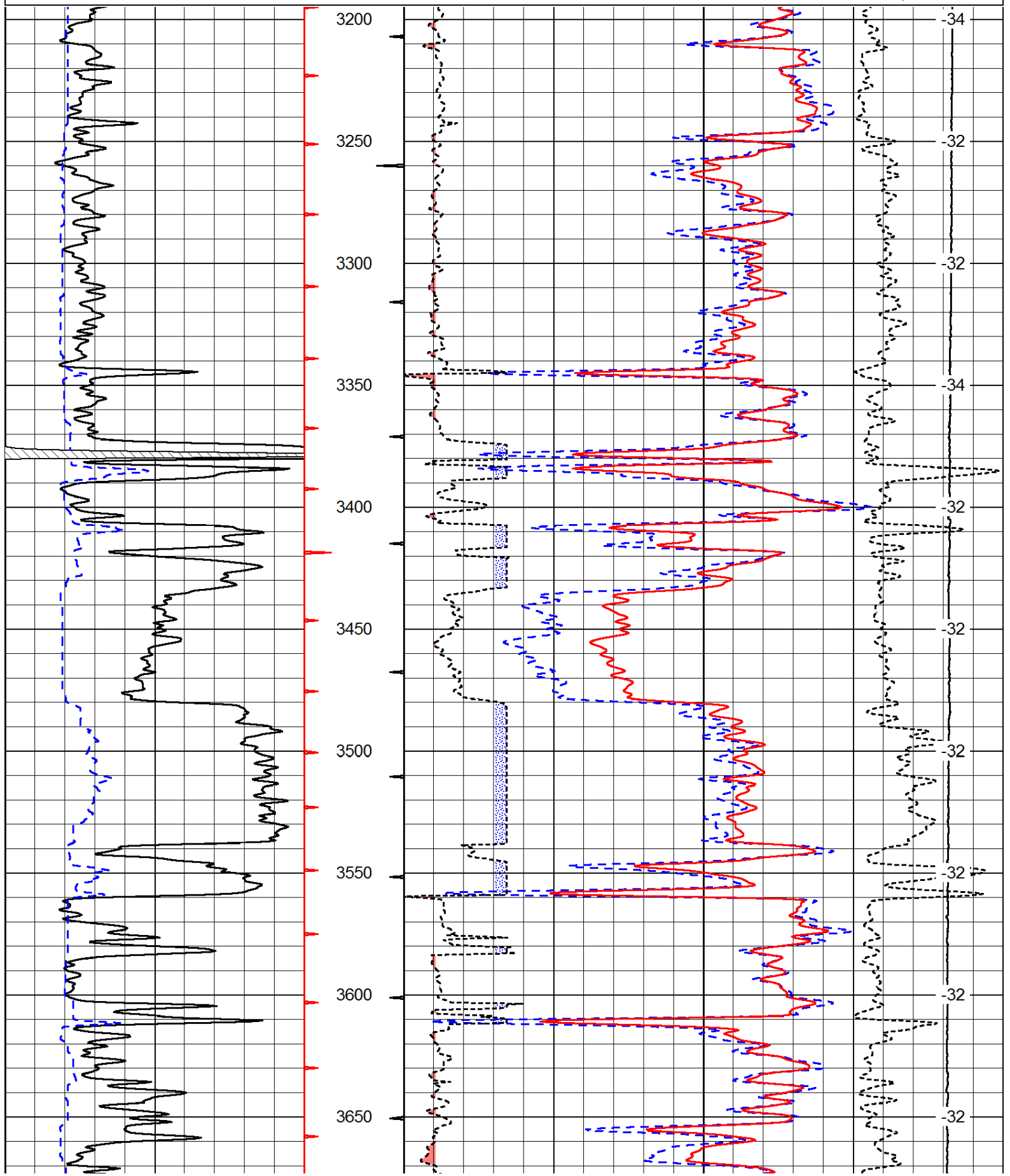
Thank you for using Pioneer Energy Services  
www.pioneerenergy.com  
785 625 3858

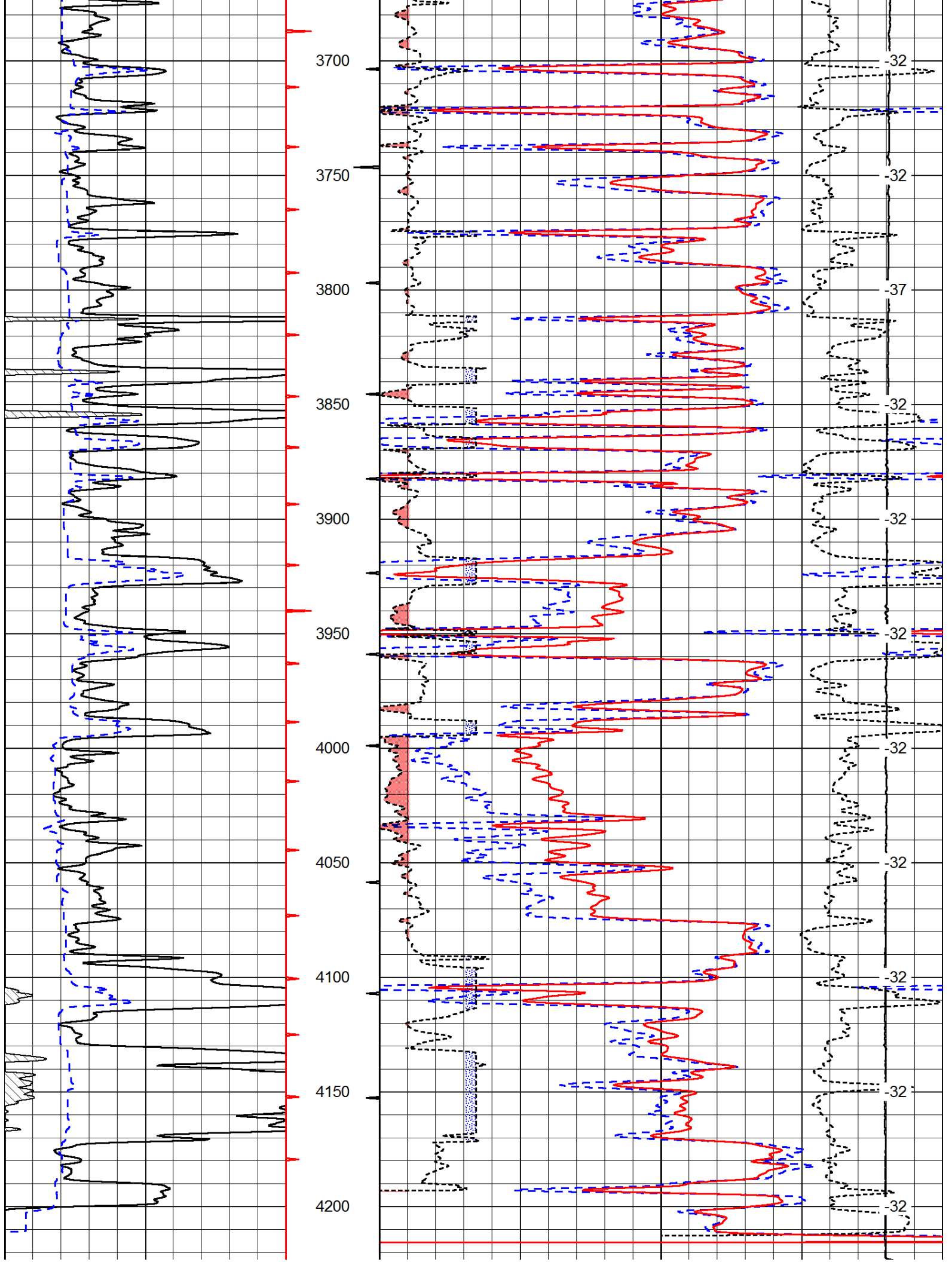
Stafford, 6 South to 60th Road, 2 West, 300' South, West Into

Database File: c:\warrior\data\h&d\_fisher #1\h&d\_fisher\_1hd.db  
 Dataset Pathname: dil/hdstck  
 Presentation Format: cdl  
 Dataset Creation: Mon Jan 20 21:28:38 2014  
 Charted by: Depth in Feet scaled 1:600

0	Gamma Ray	150
6	Caliper (GAPI)	16

30	Compensated Density		-10
2	Bulk Density		3
15000	Line Tension		0
2.625	DGA	3.425	-0.25
			Correction
			0.25
LSPD			

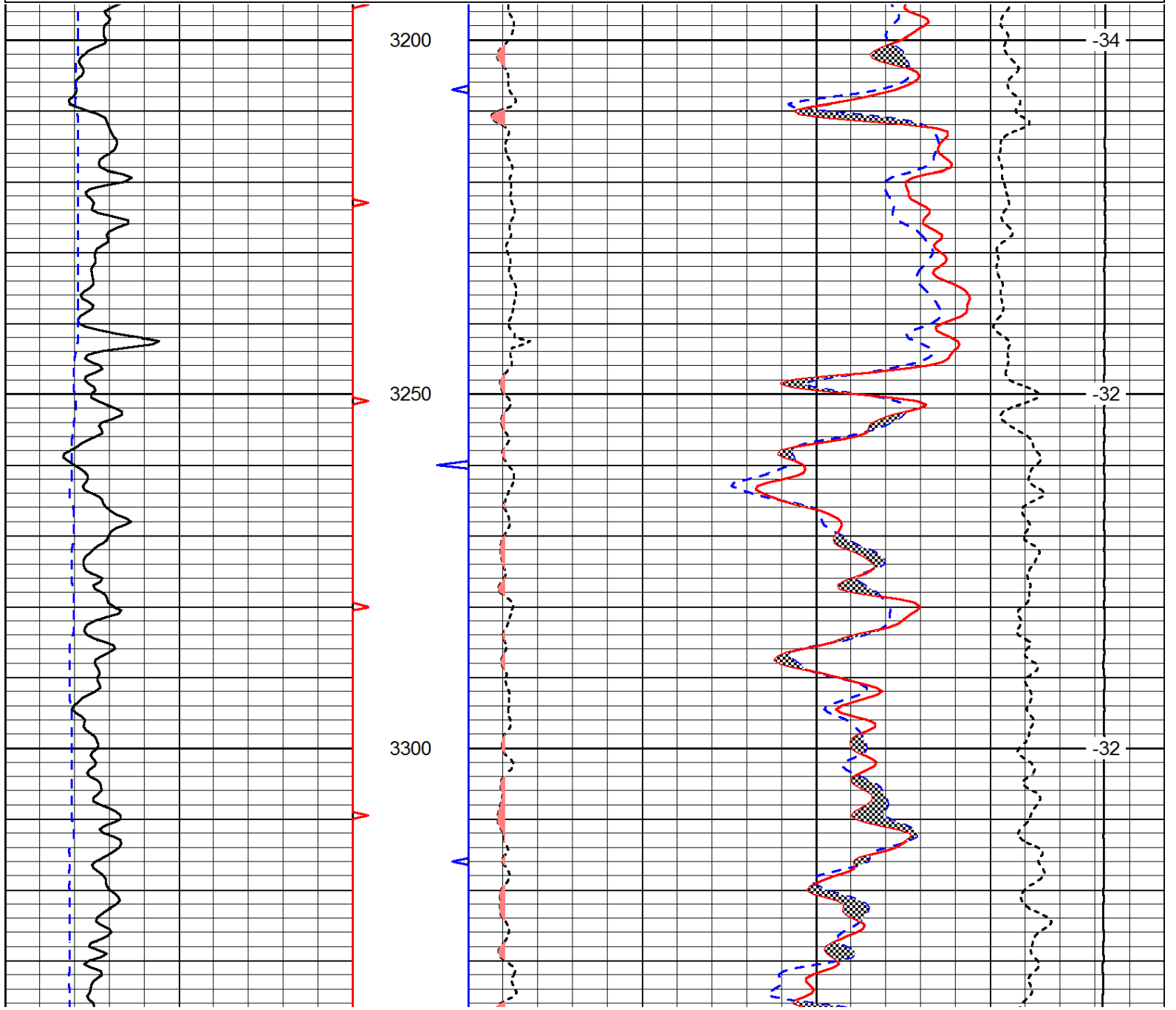


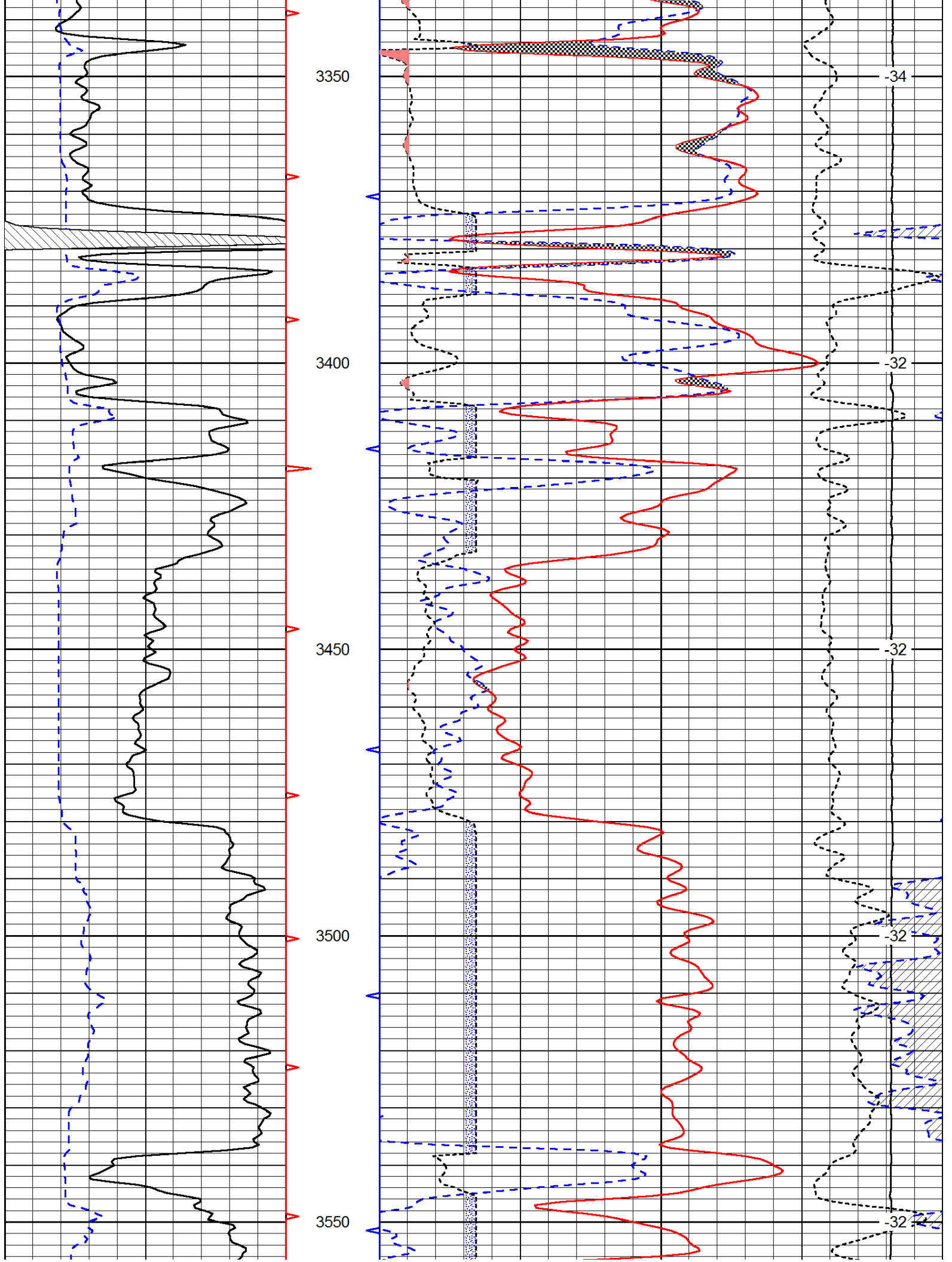


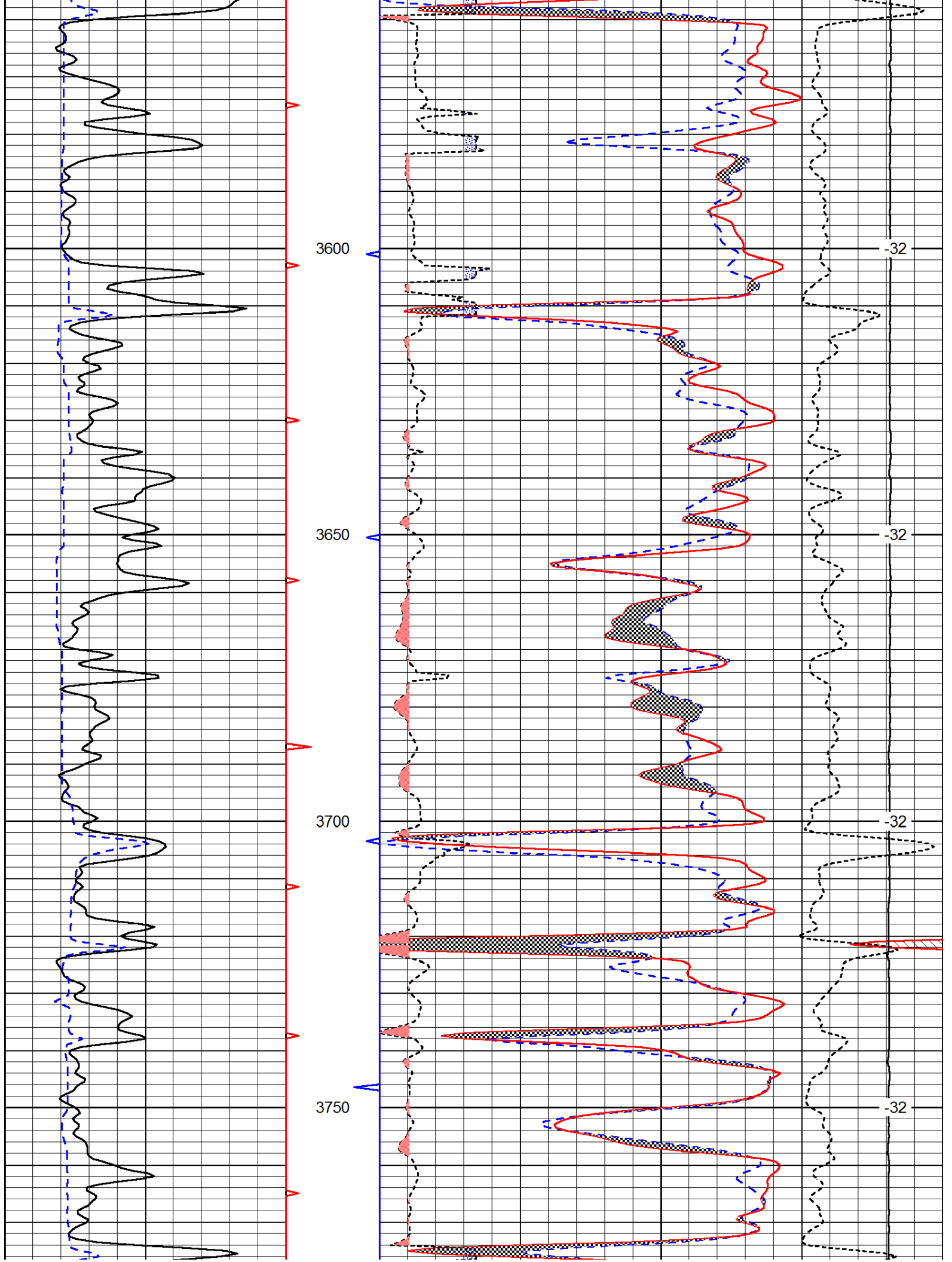
0	Gamma Ray	150	30	Compensated Density		-10
6	Caliper (GAPI)	16	2	Bulk Density		3
			15000	Line Tension		0
	2.625	DGA	3.425	-0.25	Correction	0.25
						LSPD

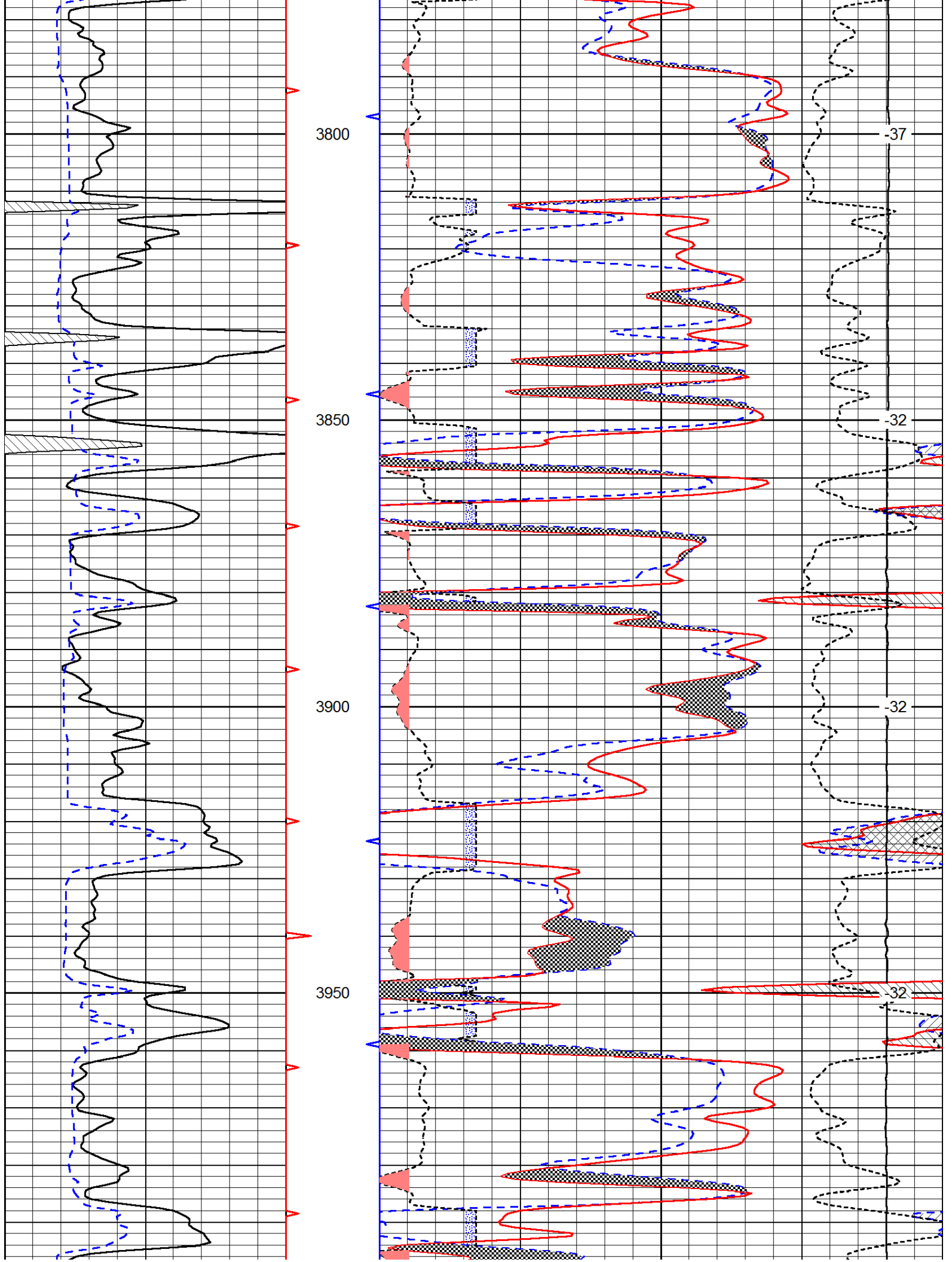
Database File: c:\warrior\data\h&d\_fisher #1\h&d\_fisher\_1hd.db  
 Dataset Pathname: dil/hdstck  
 Presentation Format: cndlspec  
 Dataset Creation: Mon Jan 20 21:28:38 2014  
 Charted by: Depth in Feet scaled 1:240

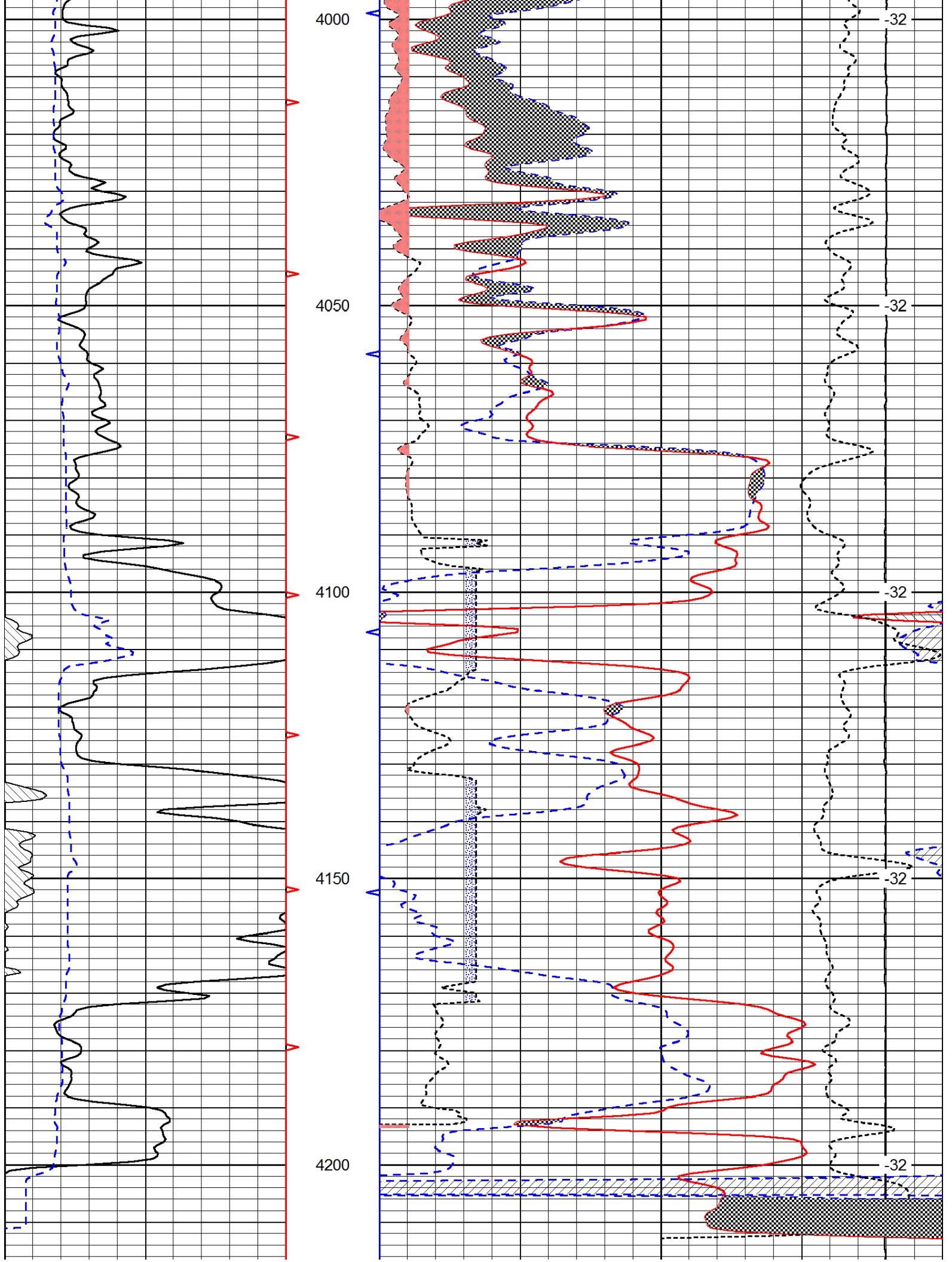
0	Gamma Ray	150	30	Compensated Neutron (Limestone)		-10
6	Caliper (GAPI)	16	30	Compensated Density (Limestone)		-10
	2.625	DGA	3.425	-0.25	Correction	0.25
			15000	Line Tension		0
						LSPD

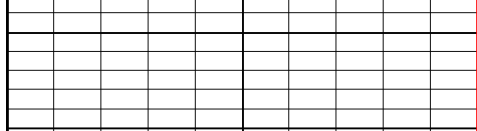






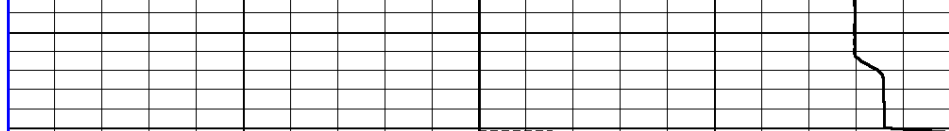






0	Gamma Ray	150
---	-----------	-----

6	Caliper (GAPI)	16
---	----------------	----



30	Compensated Neutron (Limestone)	-10
----	---------------------------------	-----

30	Compensated Density (Limestone)	-10
----	---------------------------------	-----

2.625	DGA	3.425	-0.25	Correction	0.25
-------	-----	-------	-------	------------	------

15000	Line Tension	0
-------	--------------	---

LSPD