



Pioneer Energy Services

Dual Induction Log

API No.	15-193-20,903-00-00		
Company	Brito Oil Company, Inc.		
Well	Stoll No. 1-19		
Field			
County	Thomas	State	Kansas
Location	1,990' FNL & 1,860' FWL		
	Sec: 19	Twp: 10S	Rge: 31W
Permanent Datum	Ground Level	Elevation	3024
Log Measured From	Kelly Bushing	10 Ft. Above Perm. Datum	
Drilling Measured From	Kelly Bushing		
		Other Services	CNL/CDL MEL
		Elevation	K.B. 3034 D.F. 3024 G.L. 3024

Date	12/13/2013
Run Number	One
Depth Driller	4698
Depth Logger	4708
Bottom Logged Interval	4707
Top Log Interval	250
Casing Driller	8.625 @ 263
Casing Logger	263
Bit Size	7.875
Type Fluid in Hole	Chemical
Salinity, ppm CL	2300
Density / Viscosity	9.1 59
pH / Fluid Loss	10.0 8.0
Source of Sample	Flowline
Rm @ Meas. Temp	1.60 @ 64
Rmf @ Meas. Temp	1.20 @ 64
Rmc @ Meas. Temp	2.16 @ 64
Source of Rmf / Rmc	Charts
Rm @ BHT	.83 @ 123
Operating Rig Time	4 Hours
Max Rec. Temp. F	123
Equipment Number	108
Location	Hays
Recorded By	J. Long
Witnessed By	Ken Wallace

<<< Fold Here >>>

All interpretations are opinions based on inferences from electrical or other measurements and we cannot and do not guarantee the accuracy or correctness of any interpretation, and we shall not, except in the case of gross or willful negligence on our part, be liable or responsible for any loss, costs, damages, or expenses incurred or sustained by anyone resulting from any interpretation made by any of our officers, agents or employees. These interpretations are also subject to our general terms and conditions set out in our current Price Schedule.

Comments

Thank you for using Log-Tech, Inc.
(785) 625-3858

Oakley, North on Main Street to 8th Street, 2 blocks East to TH 30, North to C Road,
2 East across I-70, 1/2 North, East Into

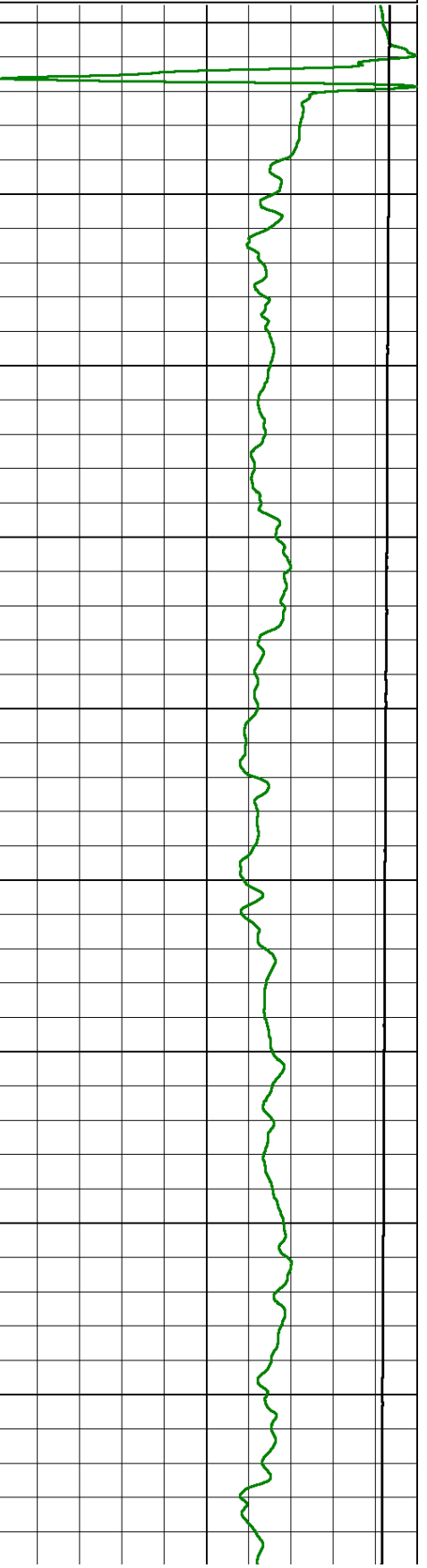
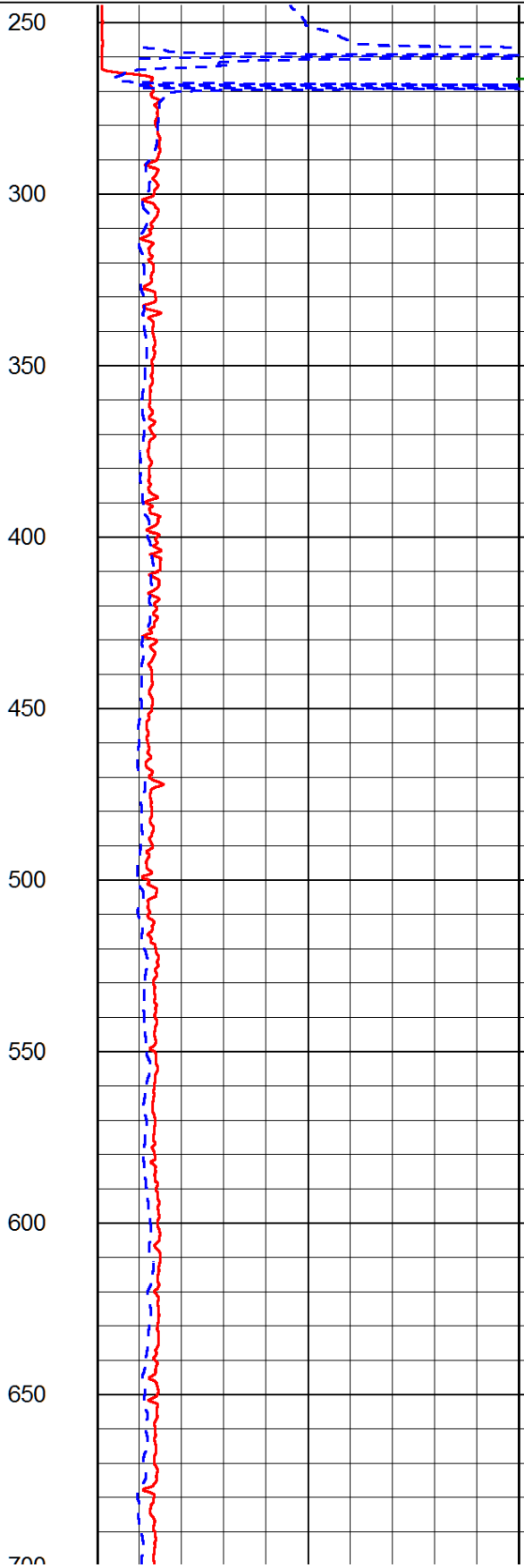
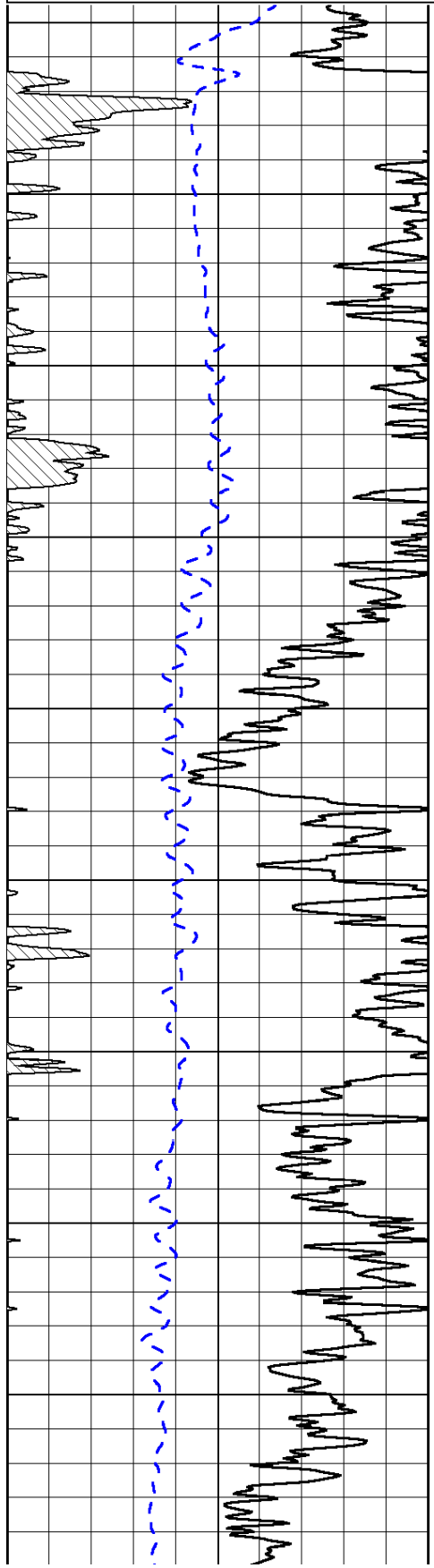
Database File: brito_stoll_1-19hd.db
 Dataset Pathname: dil/britstck
 Presentation Format: dil2in
 Dataset Creation: Fri Dec 13 15:24:31 2013
 Charted by: Depth in Feet scaled 1:600

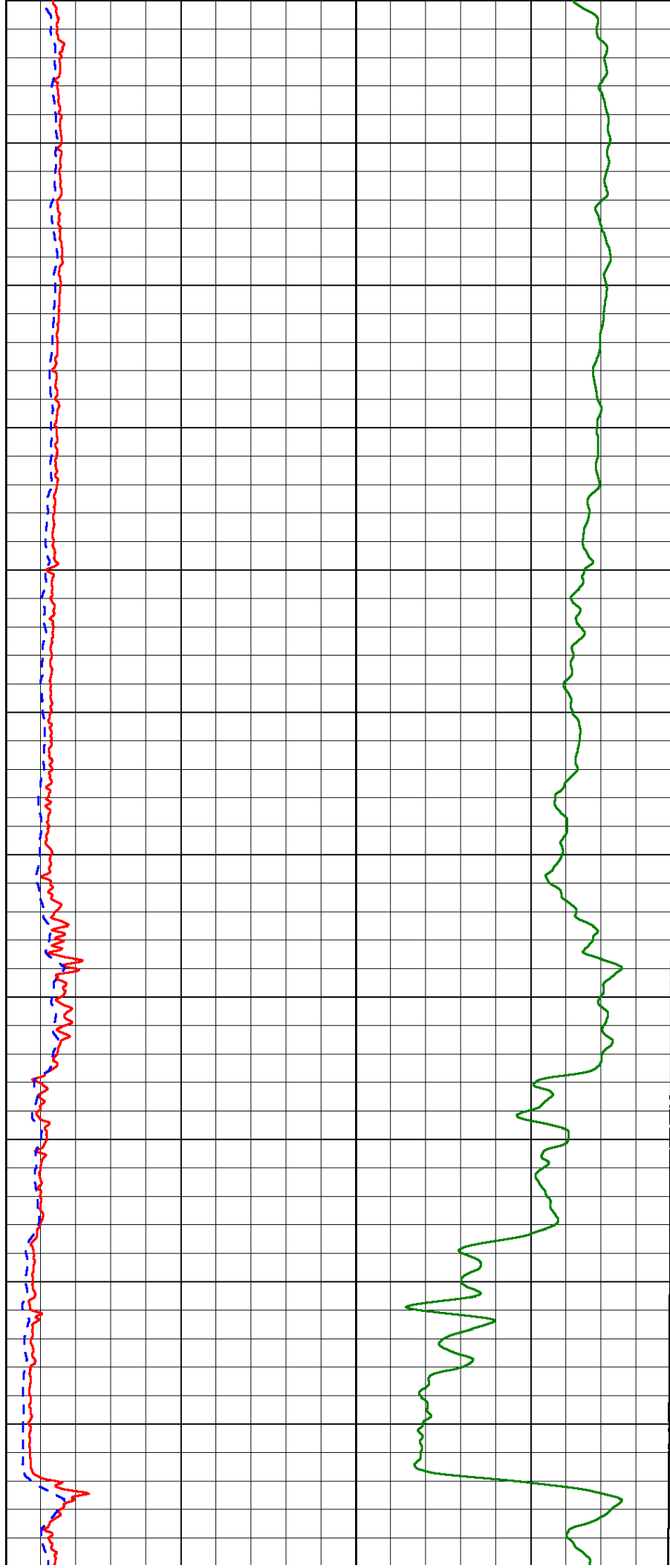
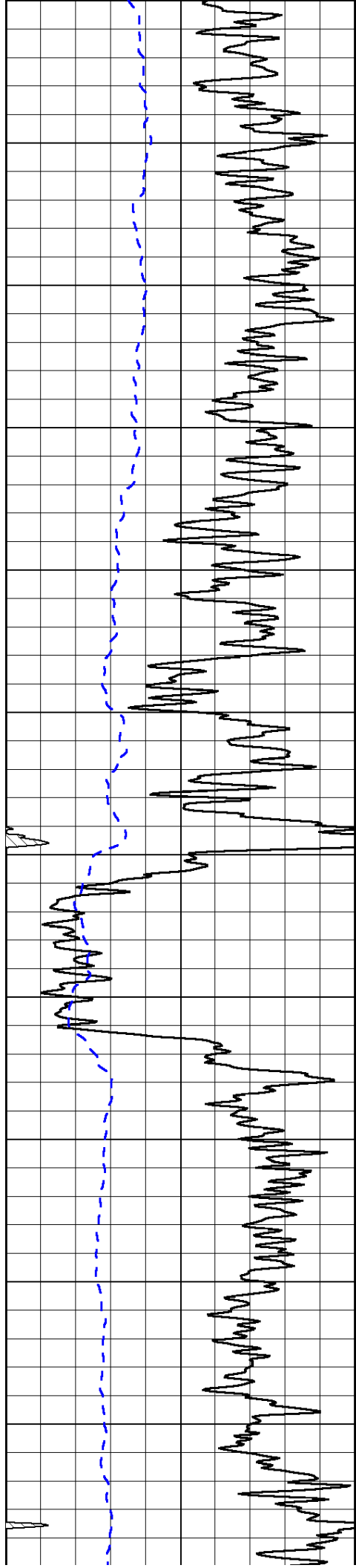
0	Gamma Ray (GAPI)	150
-200	SP (mV)	0

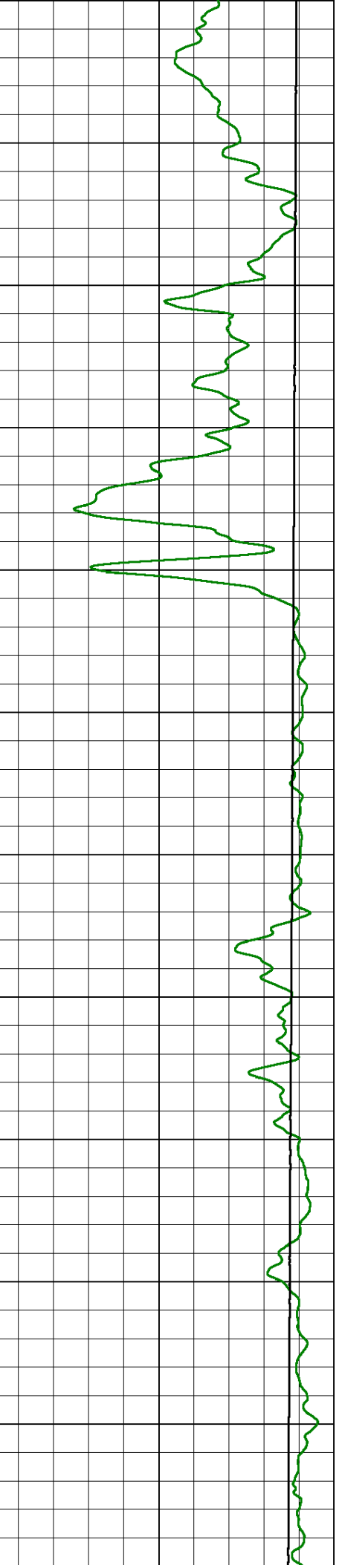
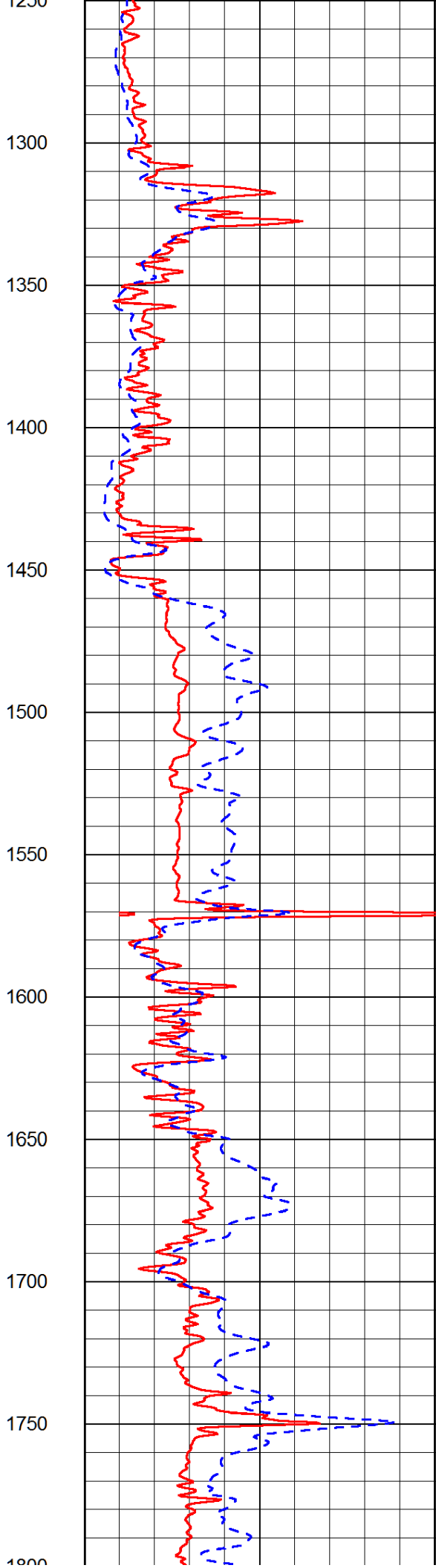
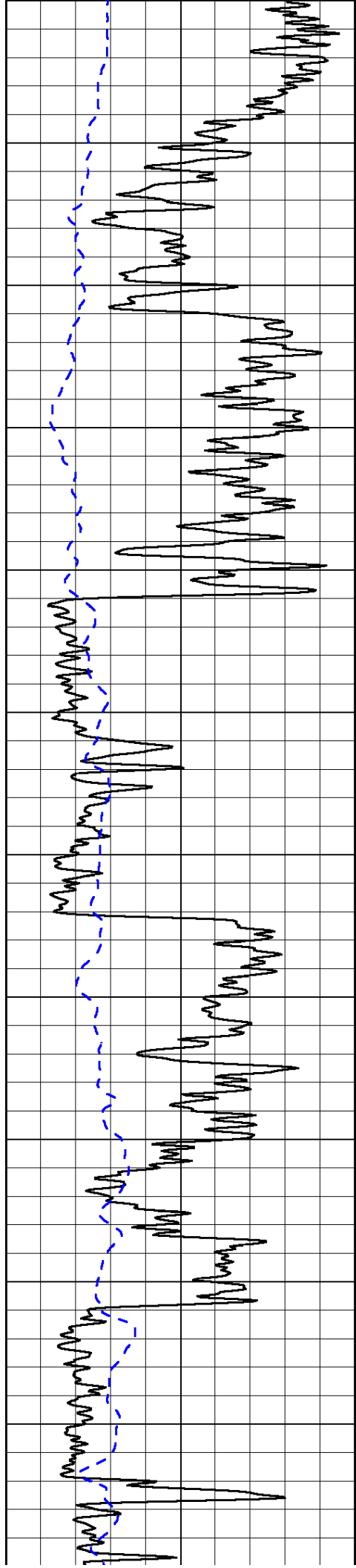
0	Shallow Resistivity (Ohm-m)	50
0	Deep Resistivity (Ohm-m)	50

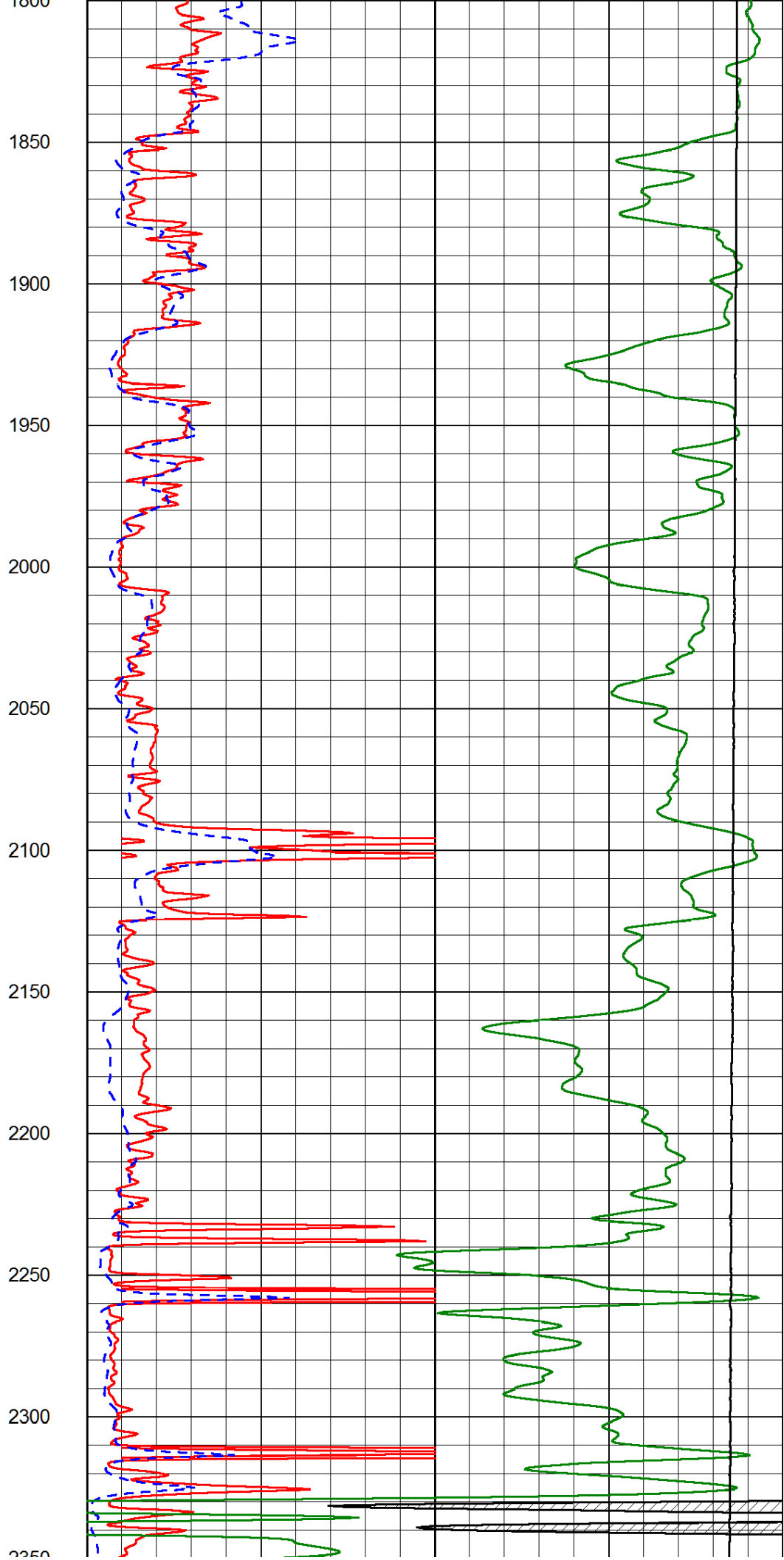
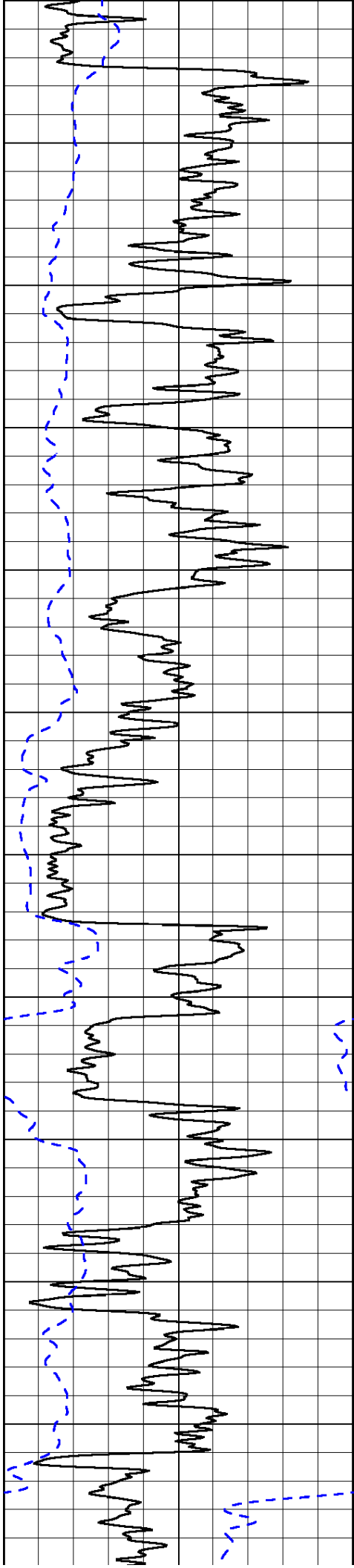
1000	Conductivity (Ohm-m)	0
15000	Line Tension (lb)	0

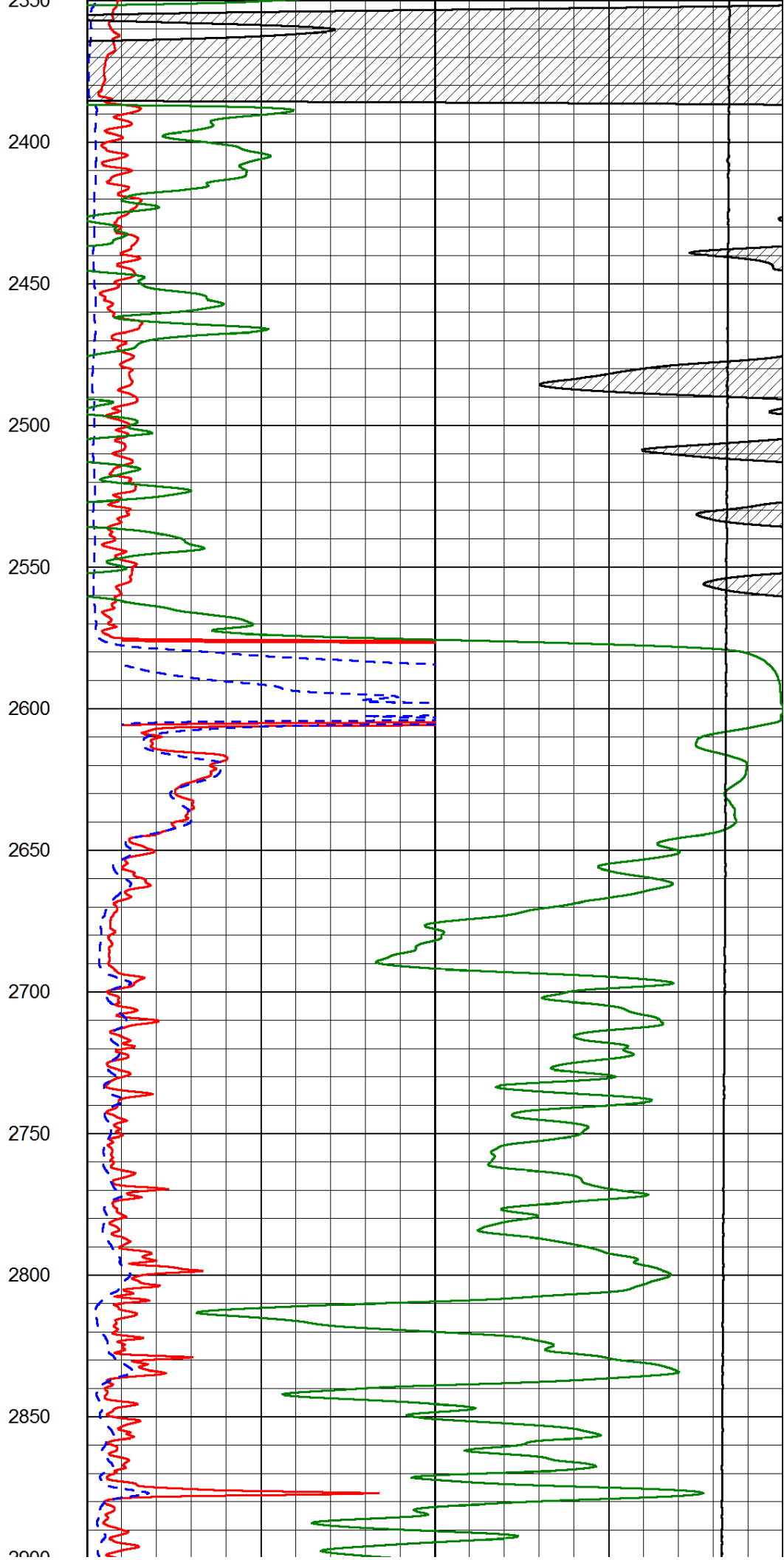
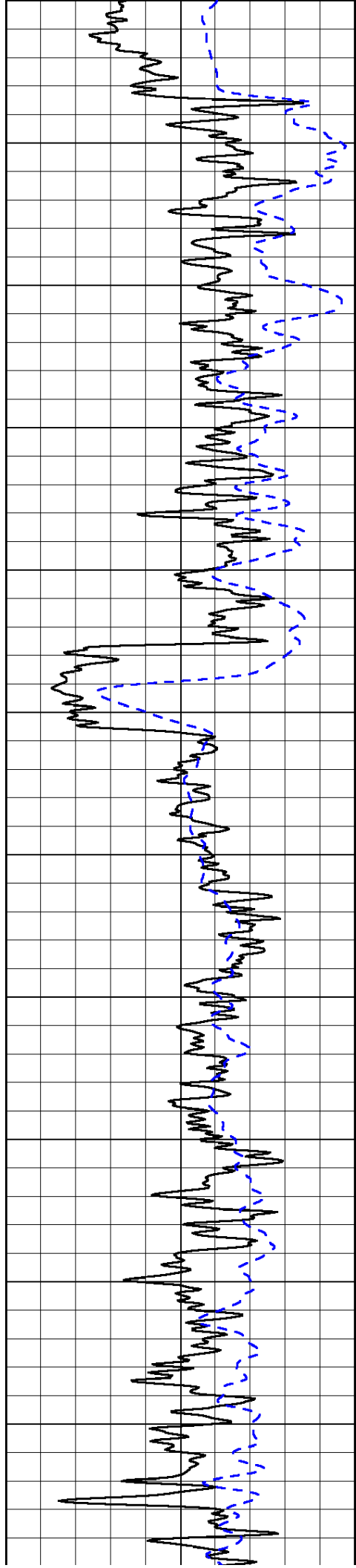
Shallow Resistivity		
50	(Ohm-m)	500
Deep Resistivity (Ohm-m)		
50		500

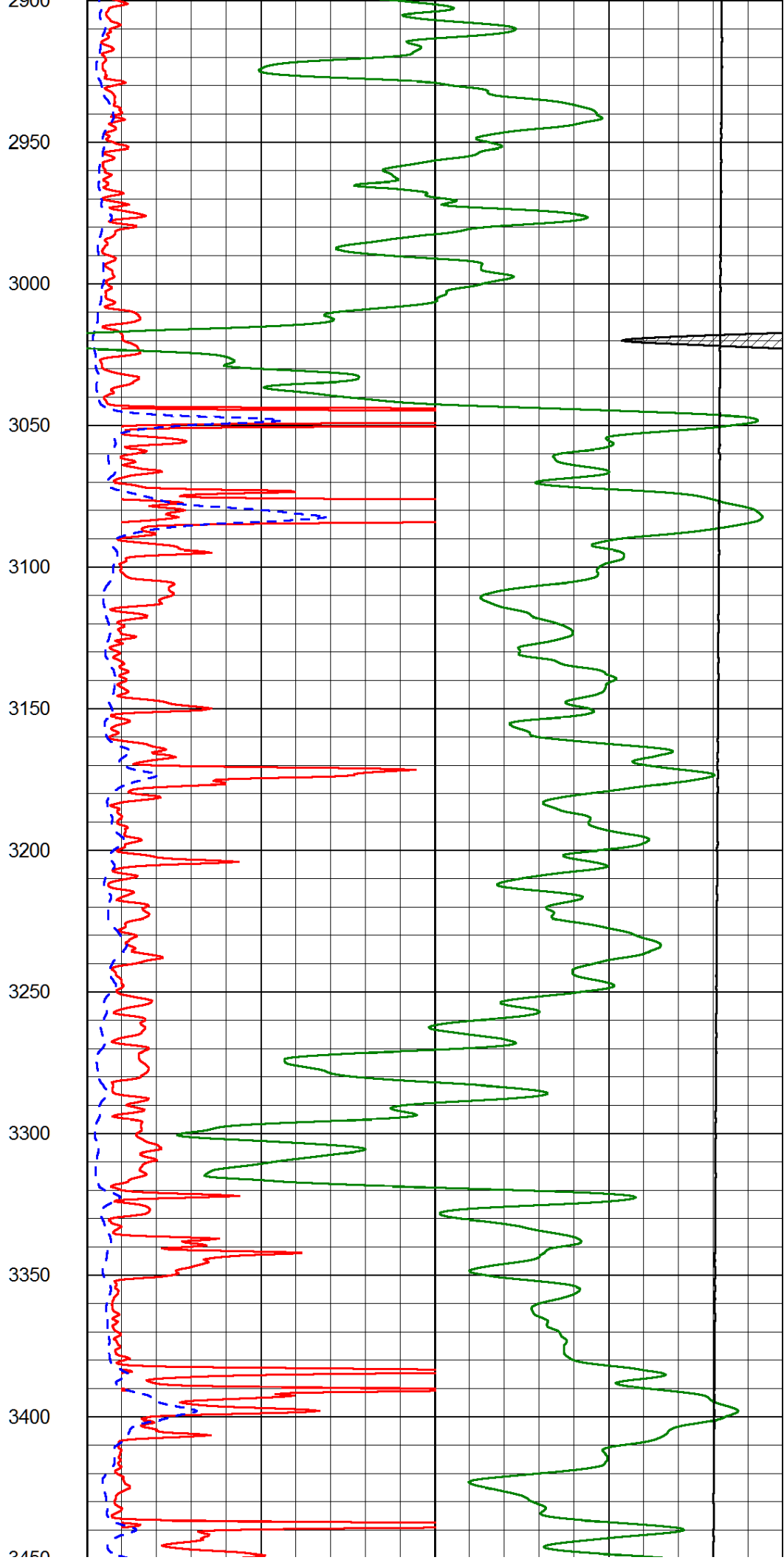
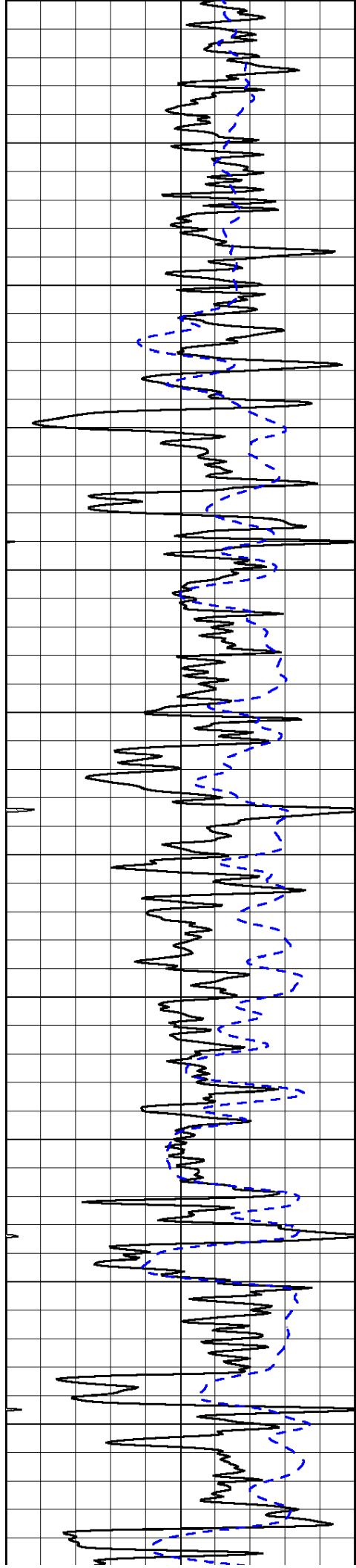


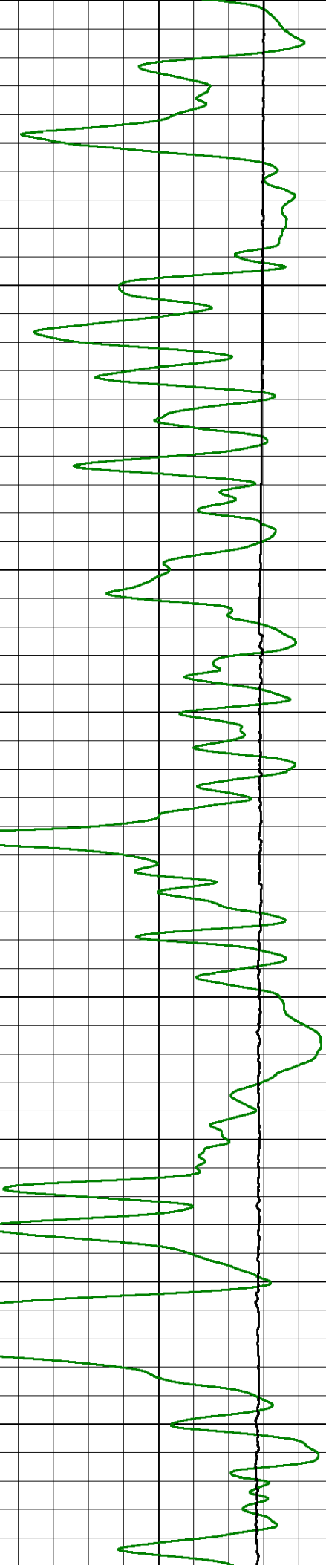
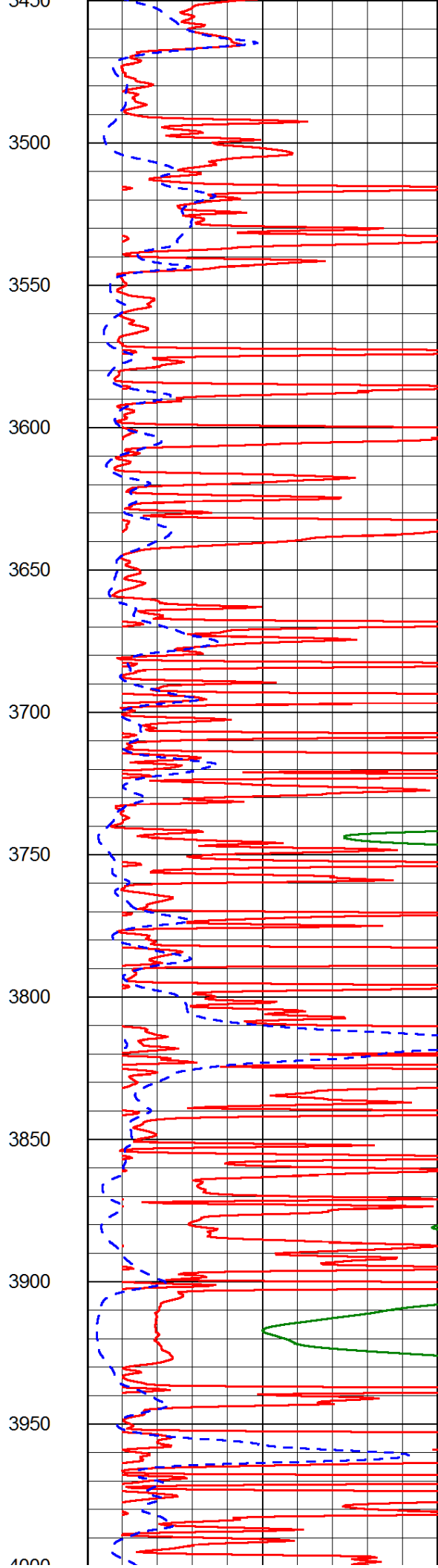
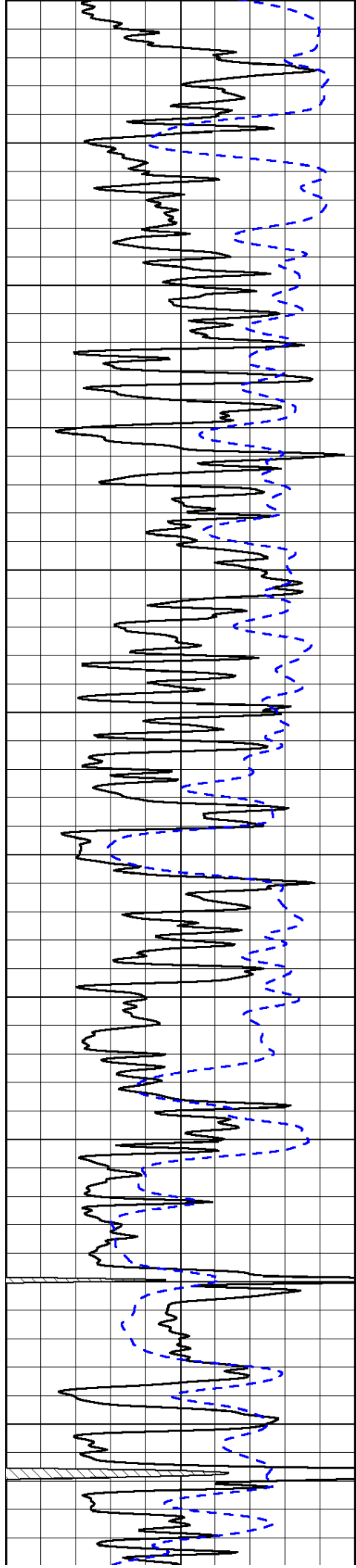


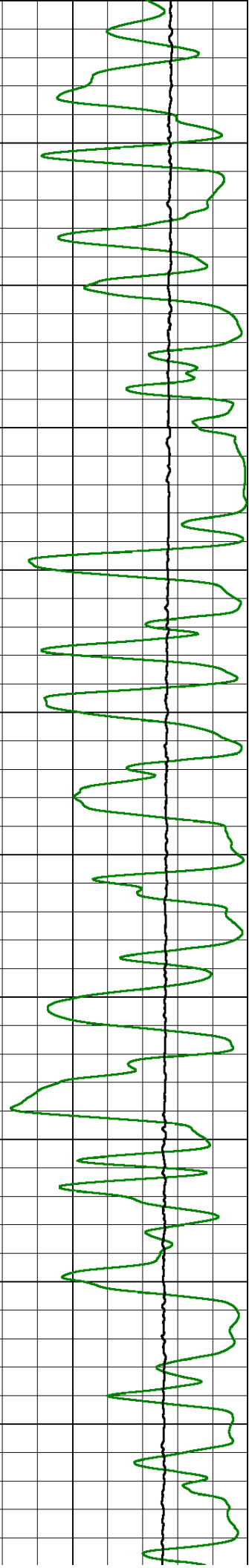
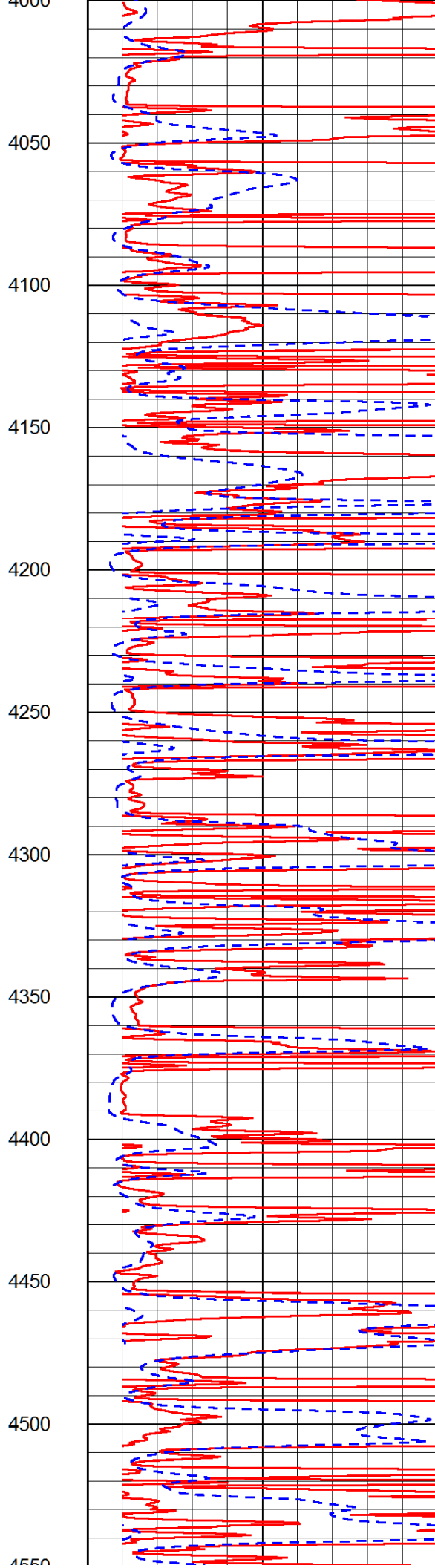
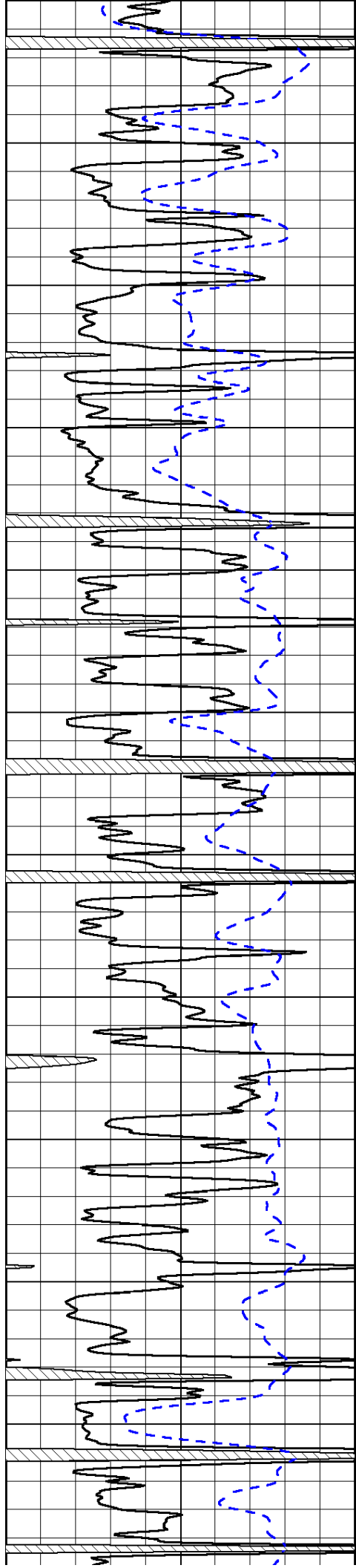


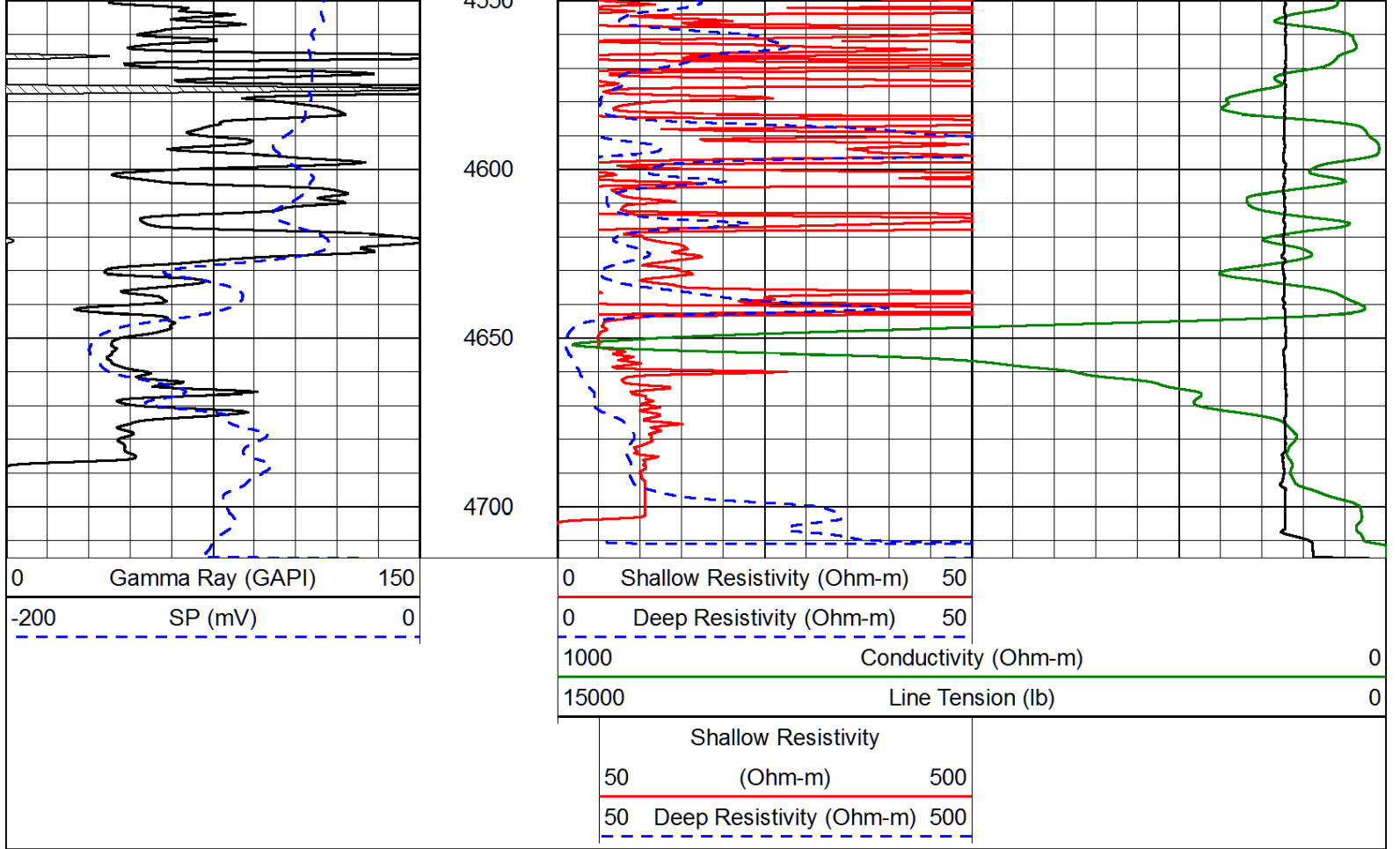




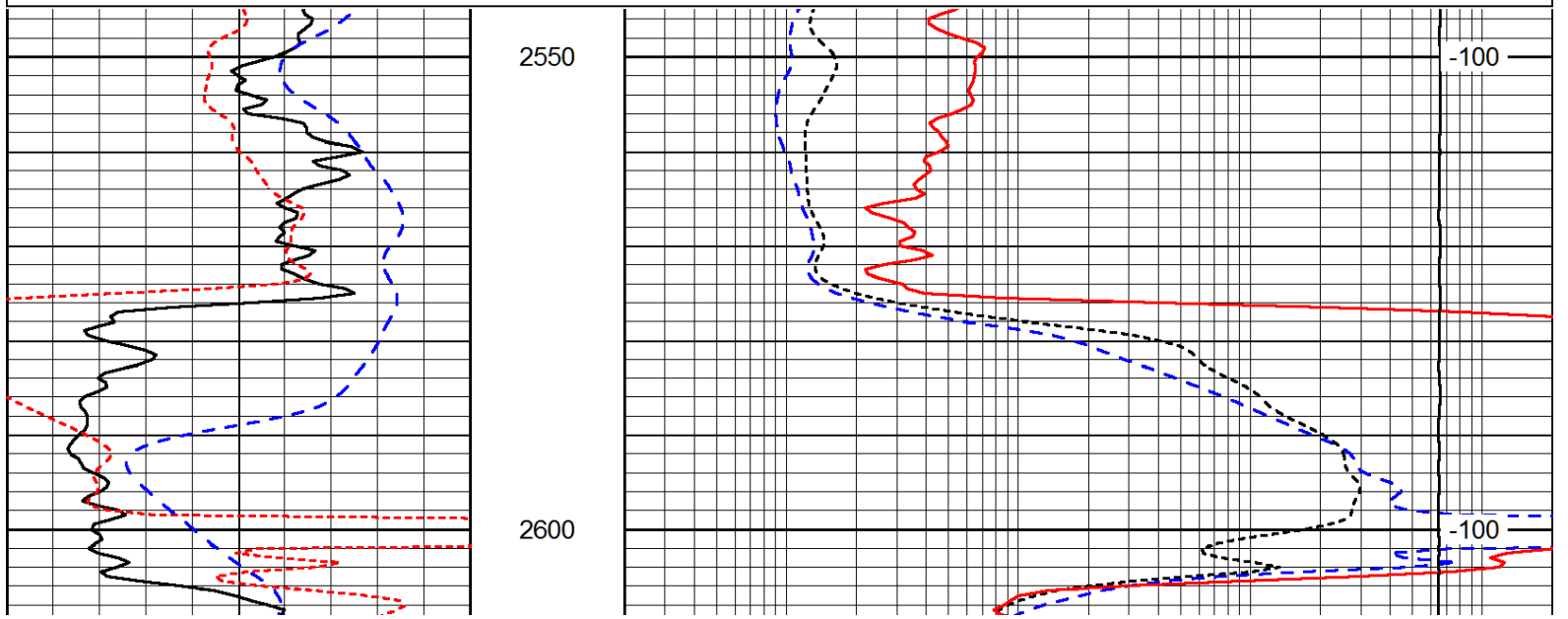
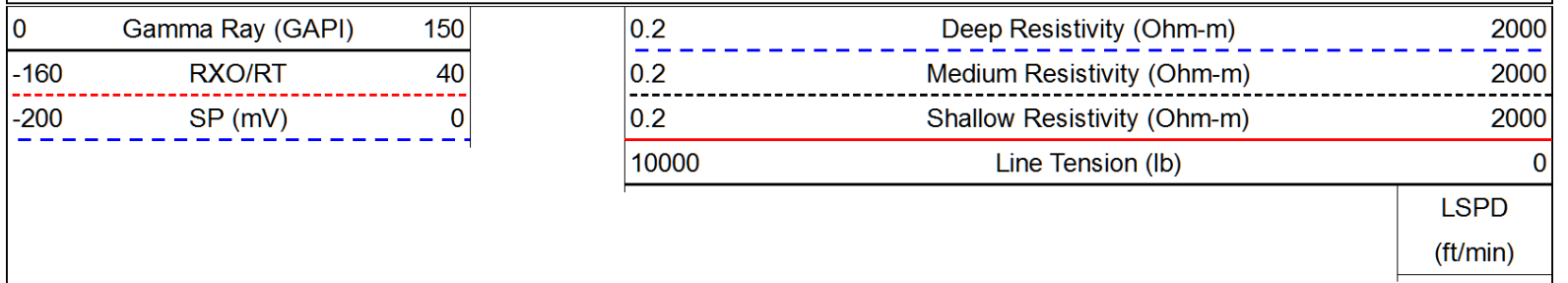


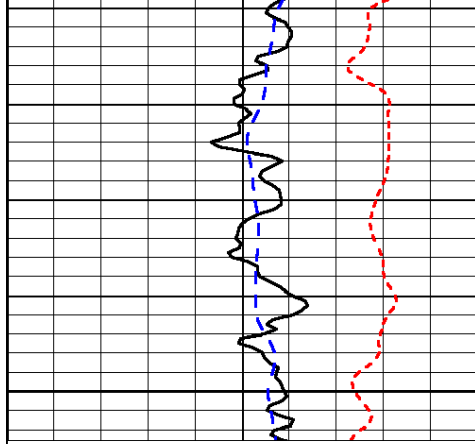






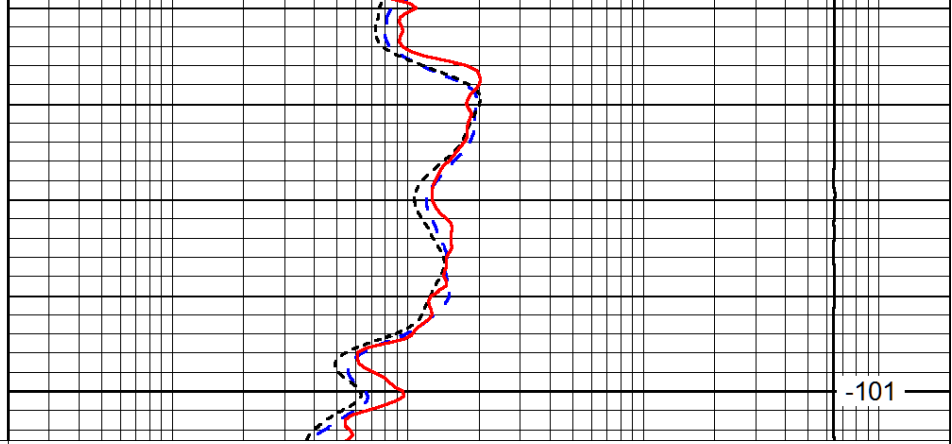
Database File: brito_stoll_1-19hd.db
 Dataset Pathname: dil/britstck
 Presentation Format: dil
 Dataset Creation: Fri Dec 13 15:24:31 2013
 Charted by: Depth in Feet scaled 1:240





2650

0	Gamma Ray (GAPI)	150
-160	RXO/RT	40
-200	SP (mV)	0



-101

0.2	Deep Resistivity (Ohm-m)	2000
0.2	Medium Resistivity (Ohm-m)	2000
0.2	Shallow Resistivity (Ohm-m)	2000
10000	Line Tension (lb)	0

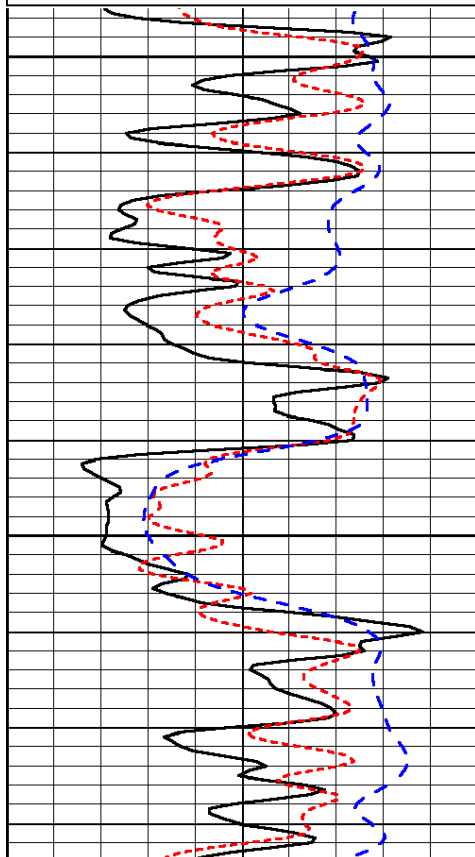
LSPD
(ft/min)

Database File: brito_stoll_1-19hd.db
 Dataset Pathname: dil/britstck
 Presentation Format: dil
 Dataset Creation: Fri Dec 13 15:24:31 2013
 Charted by: Depth in Feet scaled 1:240

0	Gamma Ray (GAPI)	150
-160	RXO/RT	40
-200	SP (mV)	0

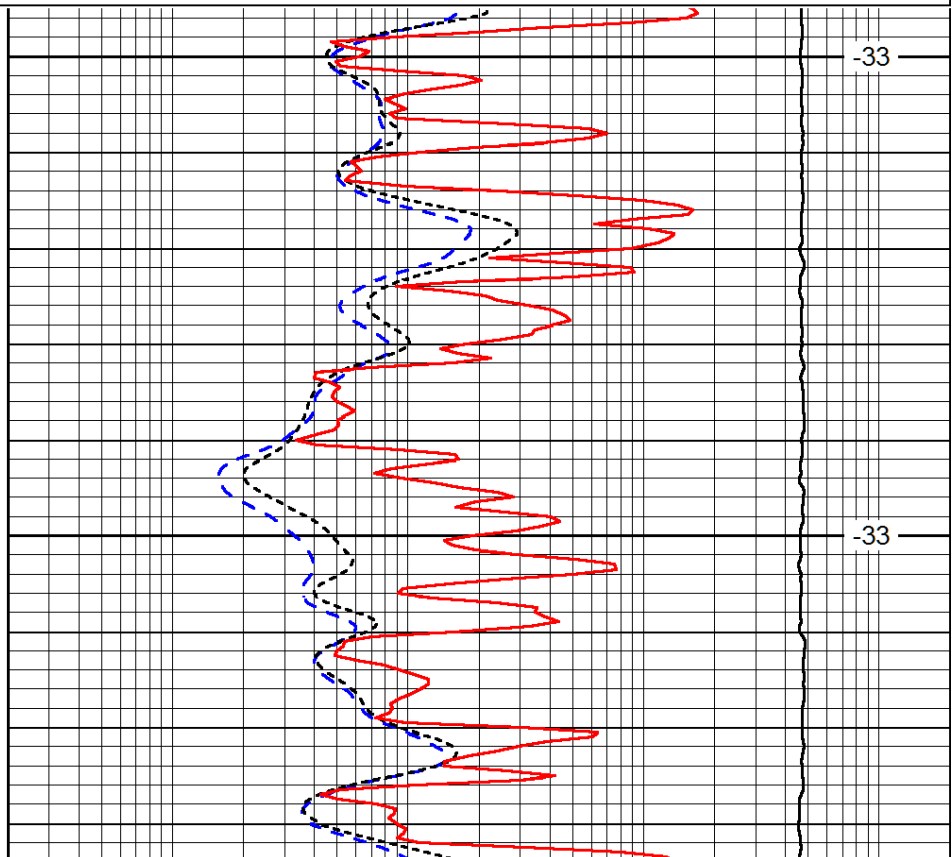
0.2	Deep Resistivity (Ohm-m)	2000
0.2	Medium Resistivity (Ohm-m)	2000
0.2	Shallow Resistivity (Ohm-m)	2000
10000	Line Tension (lb)	0

LSPD
(ft/min)



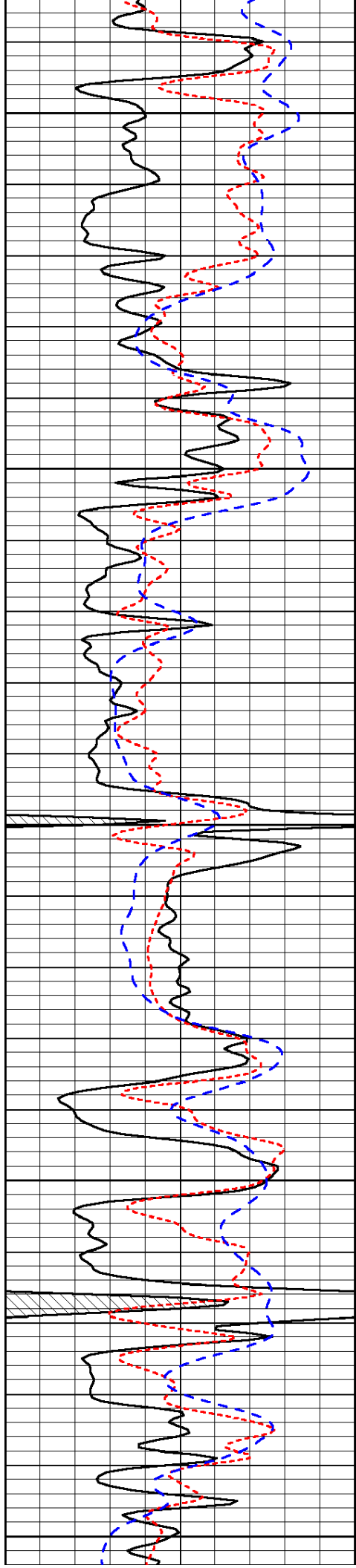
3700

3750



-33

-33



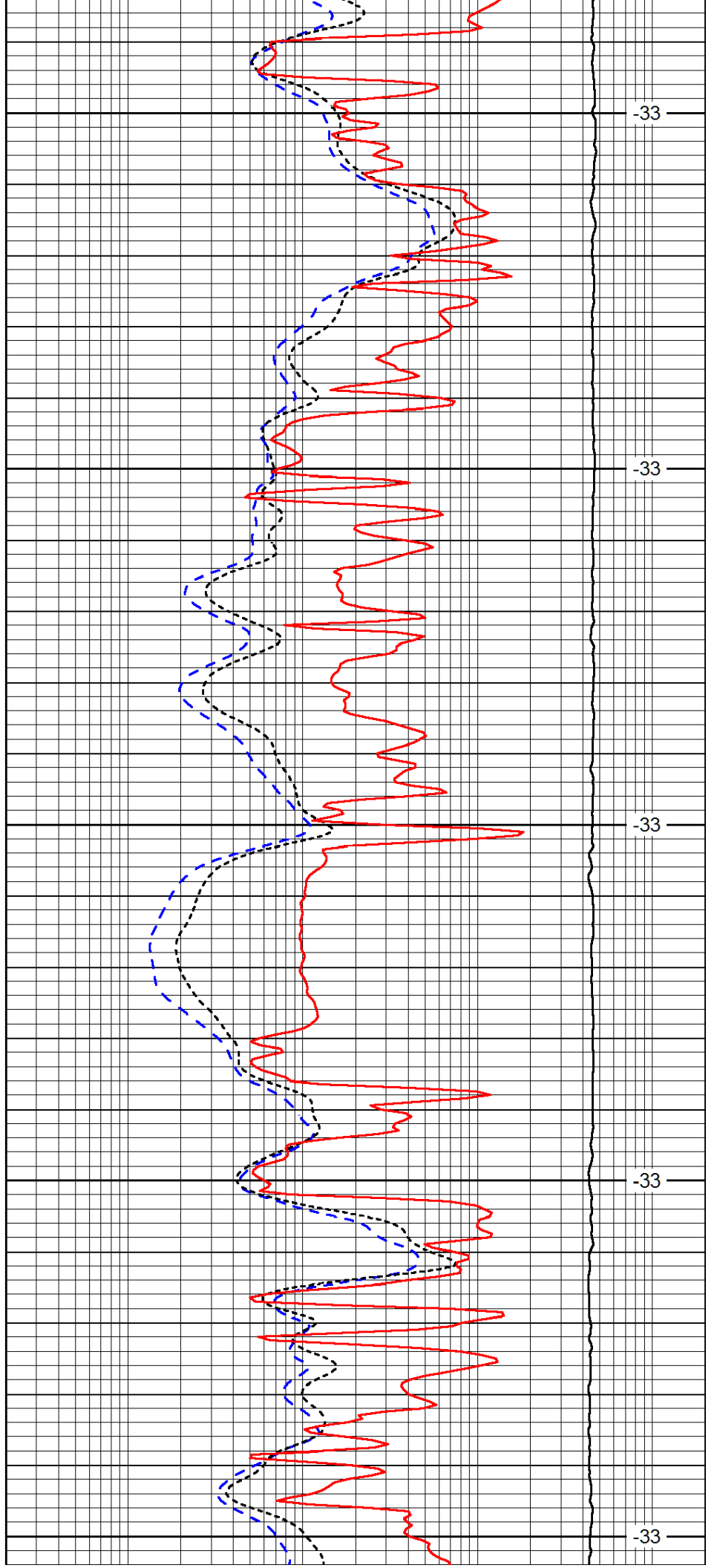
3800

3850

3900

3950

4000



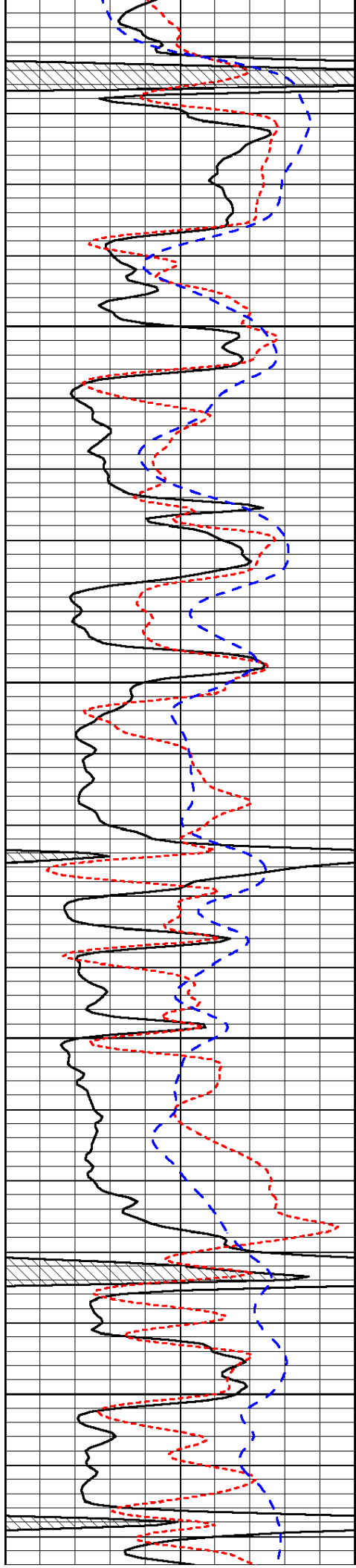
-33

-33

-33

-33

-33

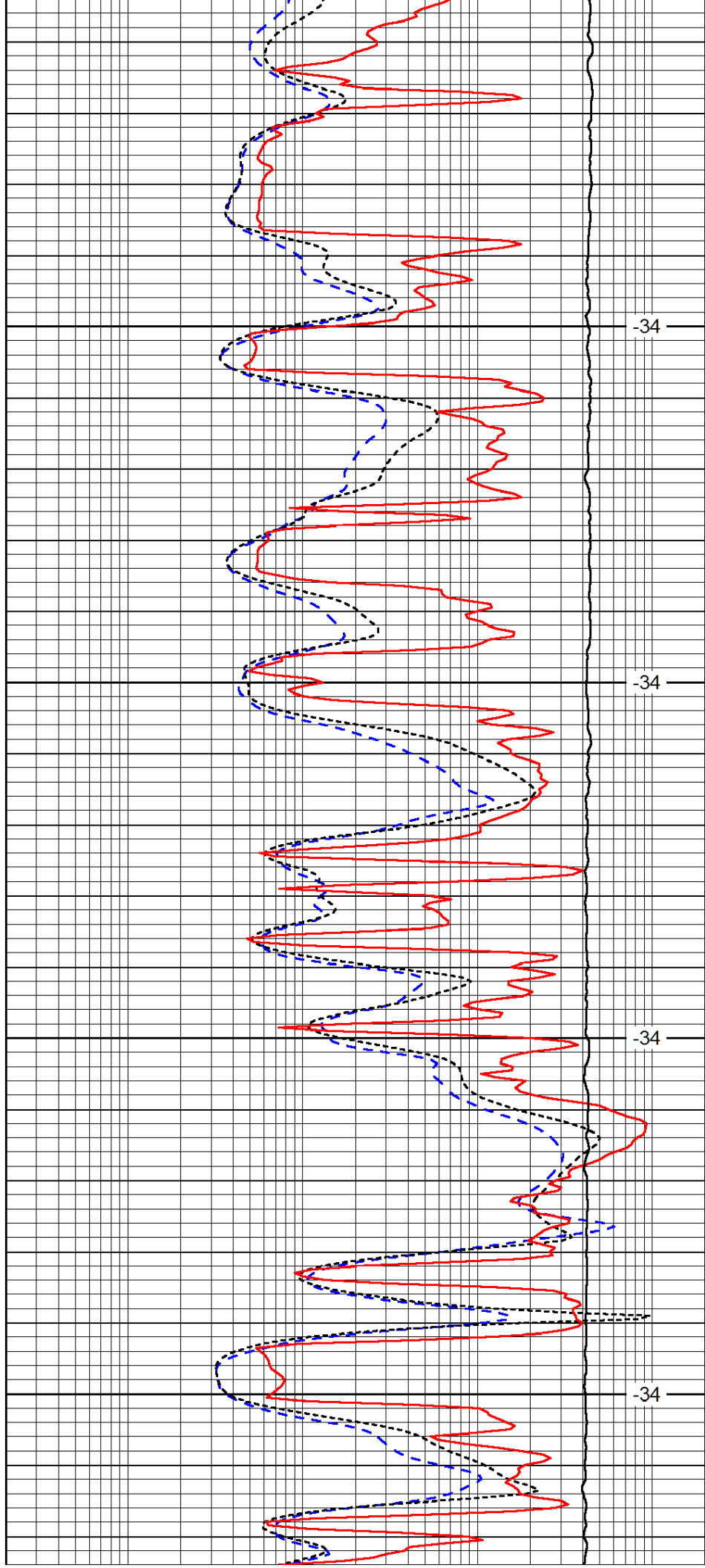


4050

4100

4150

4200

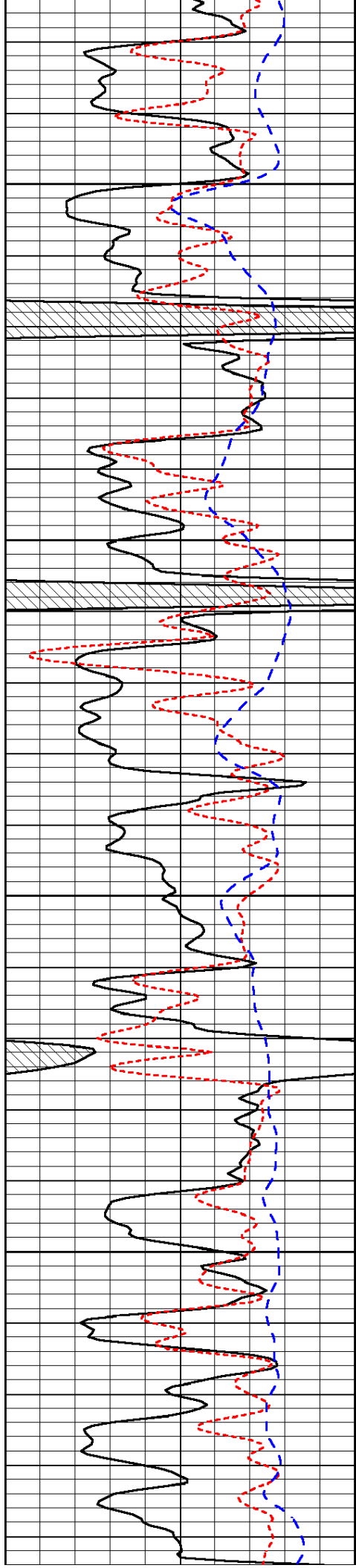


-34

-34

-34

-34

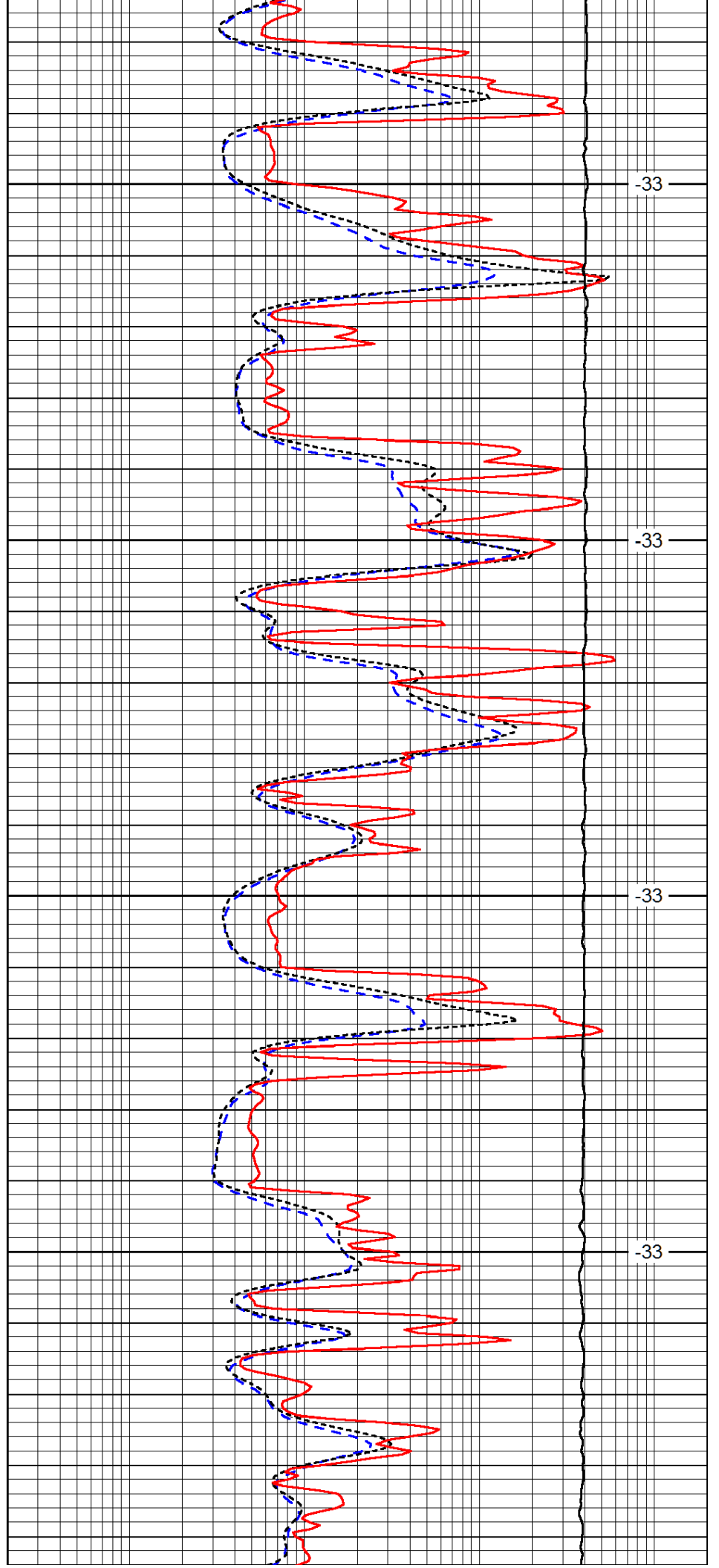


4250

4300

4350

4400

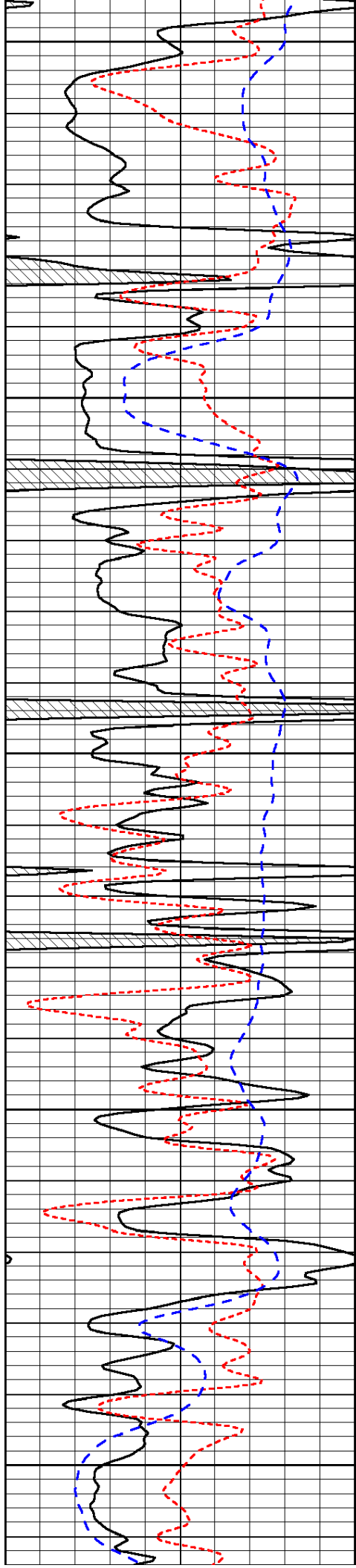


-33

-33

-33

-33



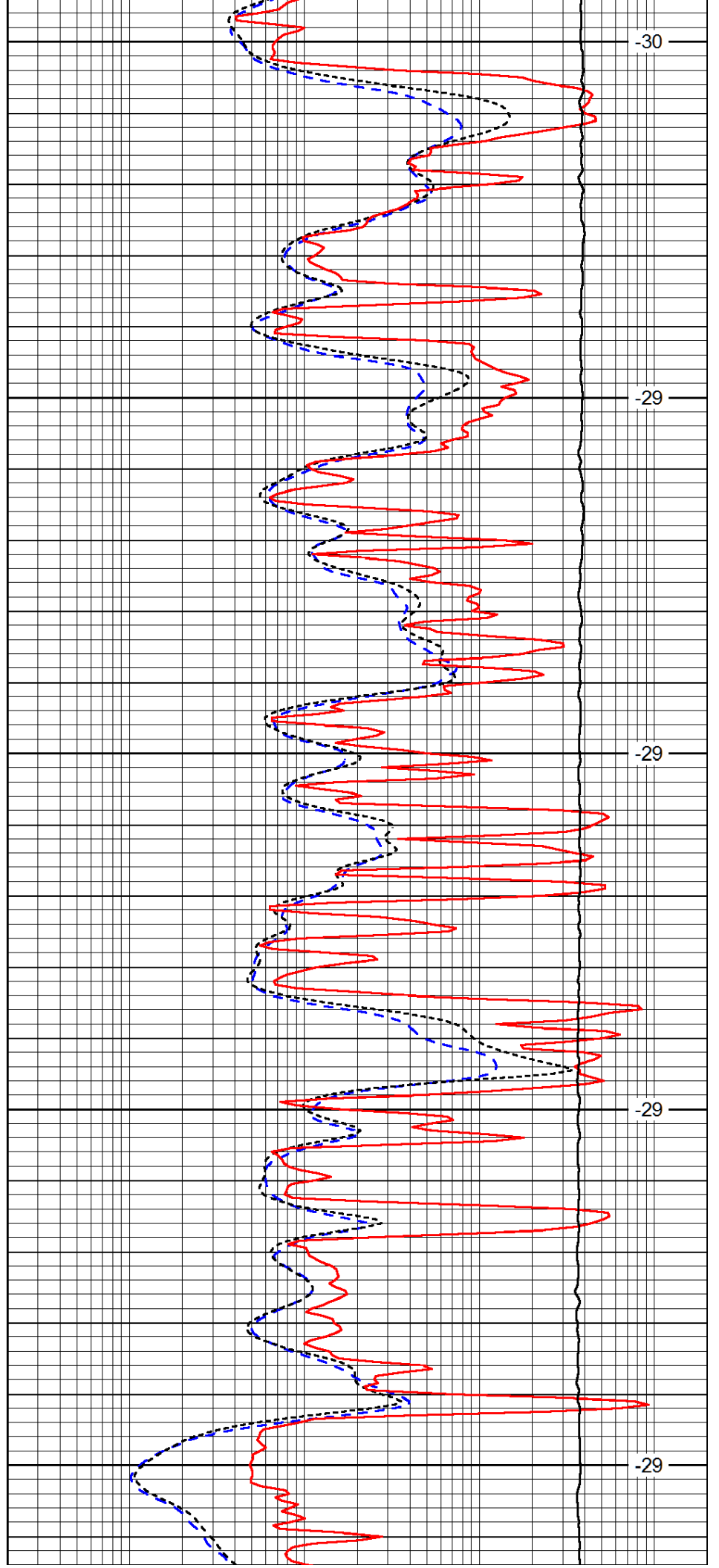
4450

4500

4550

4600

4650



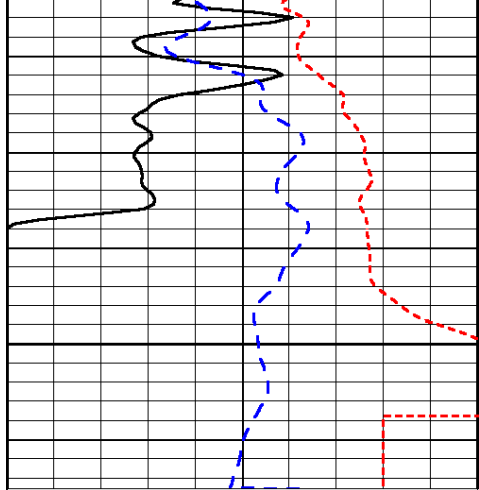
-30

-29

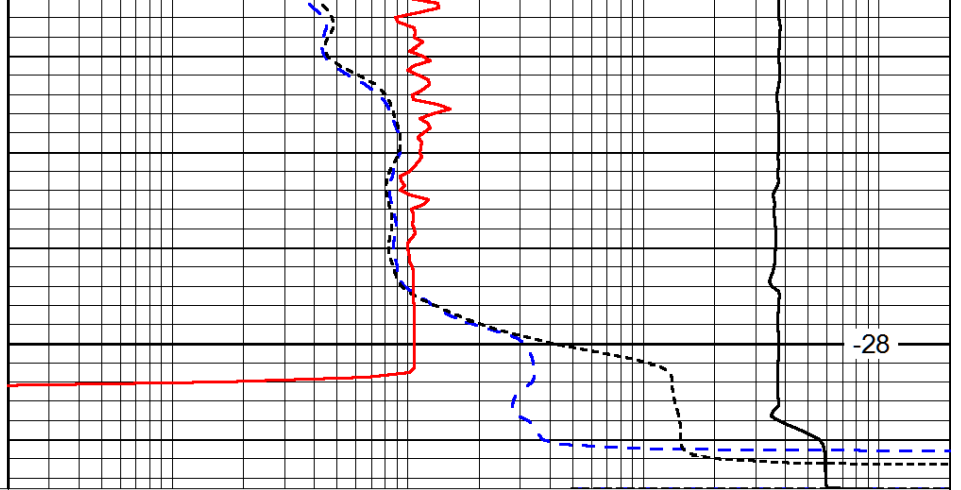
-29

-29

-29



4700



-28

0	Gamma Ray (GAPI)	150
-160	RXO/RT	40
-200	SP (mV)	0

0.2	Deep Resistivity (Ohm-m)	2000
0.2	Medium Resistivity (Ohm-m)	2000
0.2	Shallow Resistivity (Ohm-m)	2000
10000	Line Tension (lb)	0

LSPD
(ft/min)