



Pioneer Energy Services

Dual Compensated Porosity Log

API No.	15-193-20,903-00-00		
Company	Brito Oil Company, Inc.		
Well	Stoll No. 1-19		
Field	Thomas		
County	Thomas		
Location	1,990' FNL & 1,860' FWL		
Sec: 19	Twp: 10S	Rge: 31W	
Other Services		DILMEL	

Permanent Datum	Ground Level	Elevation 3024
Log Measured From	Kelly Bushing	10 Ft. Above Perm. Datum
Drilling Measured From	Kelly Bushing	
Date	12/13/2013	

Run Number	One
Type Log	CNL / CDL
Depth Driller	4698
Depth Logger	4708
Bottom Logged Interval	4687
Top Logged Interval	3700
Type Fluid In Hole	Chemical
Salinity, PPM CL	2300
Density	9.1
Level	Full
Max. Rec. Temp. F	123
Operating Rig Time	4 Hours
Equipment -- Location	108 Hays
Recorded By	J. Long
Witnessed By	Ken Wallace

Borehole Record		Casing Record				
Run No.	Bit From	To	Size	Wgt.	From	To
One	12.25	00	263	8.625	23#	00
Two	7.875	263	TD			263

<<< Fold Here >>>

All interpretations are opinions based on inferences from electrical or other measurements and we cannot and do not guarantee the accuracy or correctness of any interpretation, and we shall not, except in the case of gross or willful negligence on our part, be liable or responsible for any loss, costs, damages, or expenses incurred or sustained by anyone resulting from any interpretation made by any of our officers, agents or employees. These interpretations are also subject to our general terms and conditions set out in our current Price Schedule.

Comments

Thank you for using Log-Tech, Inc.
(785) 625-3858

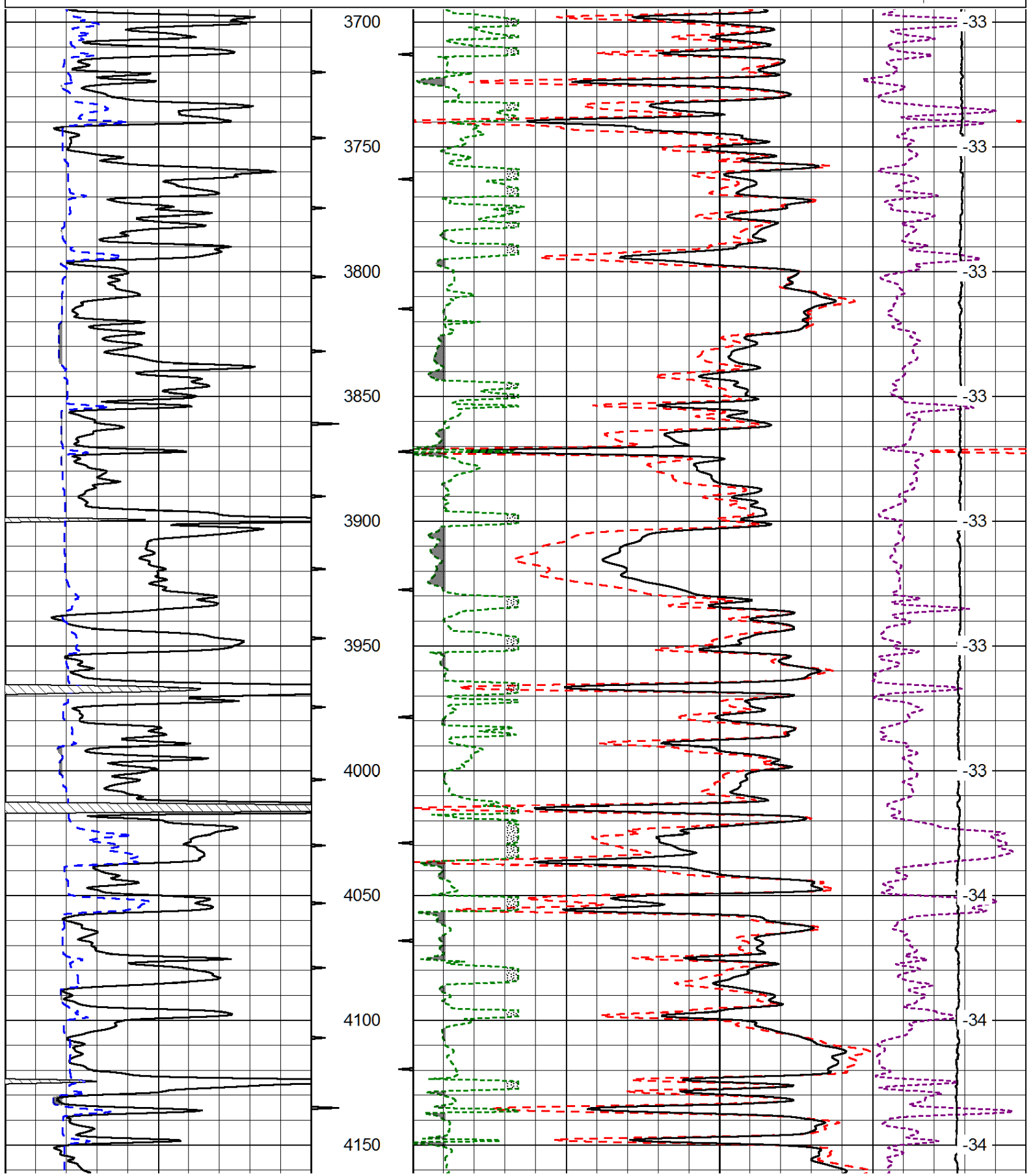
Oakley, North on Main Street to 8th Street, 2 blocks East to TH 30, North to C Road,
2 East across I-70, 1/2 North, East Into

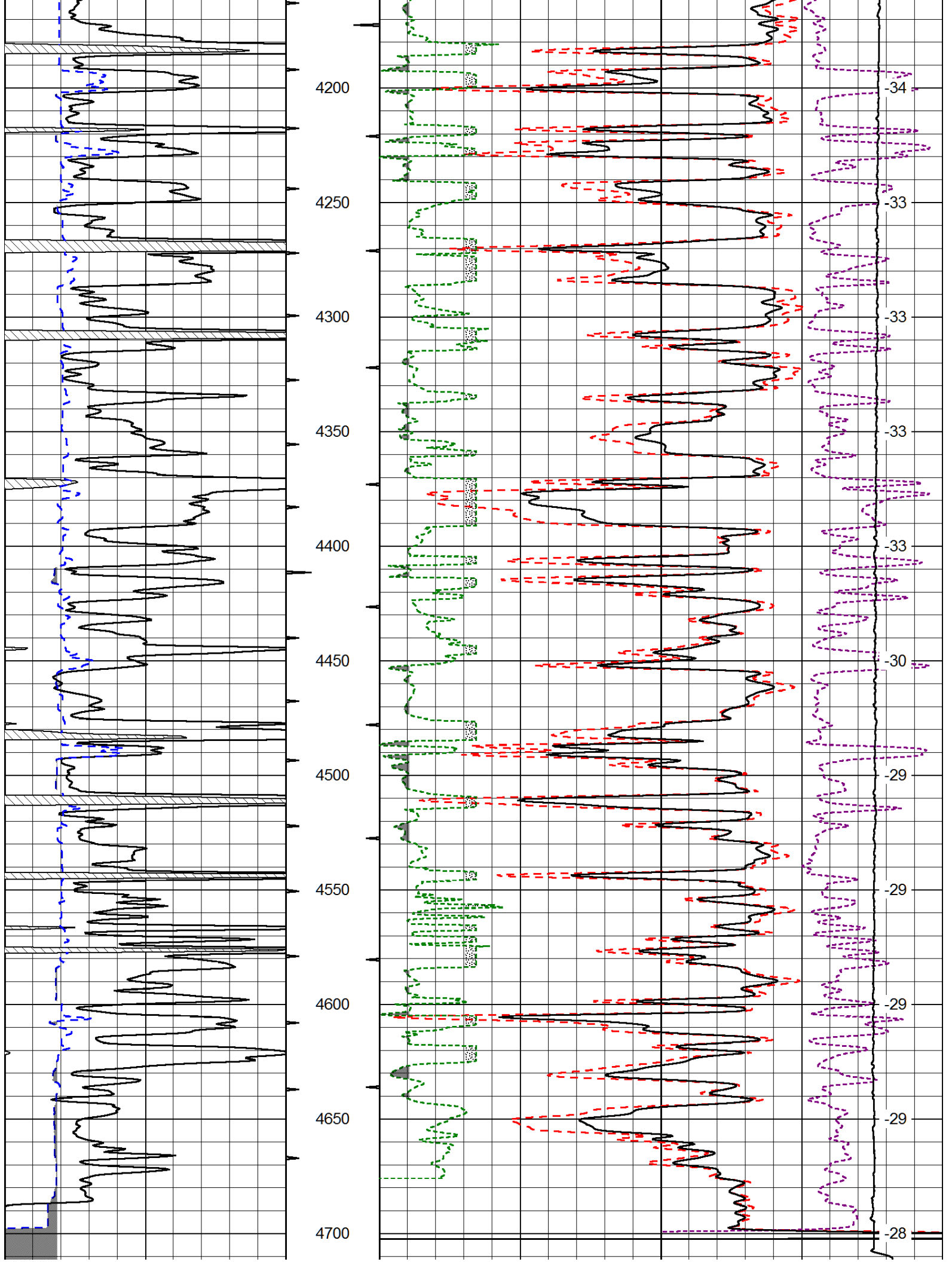
Database File: brito_stoll_1-19hd.db
 Dataset Pathname: dil/britstck
 Presentation Format: cdl
 Dataset Creation: Fri Dec 13 15:24:31 2013
 Charted by: Depth in Feet scaled 1:600

0	Gamma Ray (GAPI)	150
6	Caliper (in)	16

30	Compensated Density (pu)		-10
2	Bulk Density (g/cc)		3
15000	Line Tension (lb)		0
2.625	DGA (g/cc)	3.425	-0.25
	Correction (g/cc)		0.25

LSPD
(ft/min)





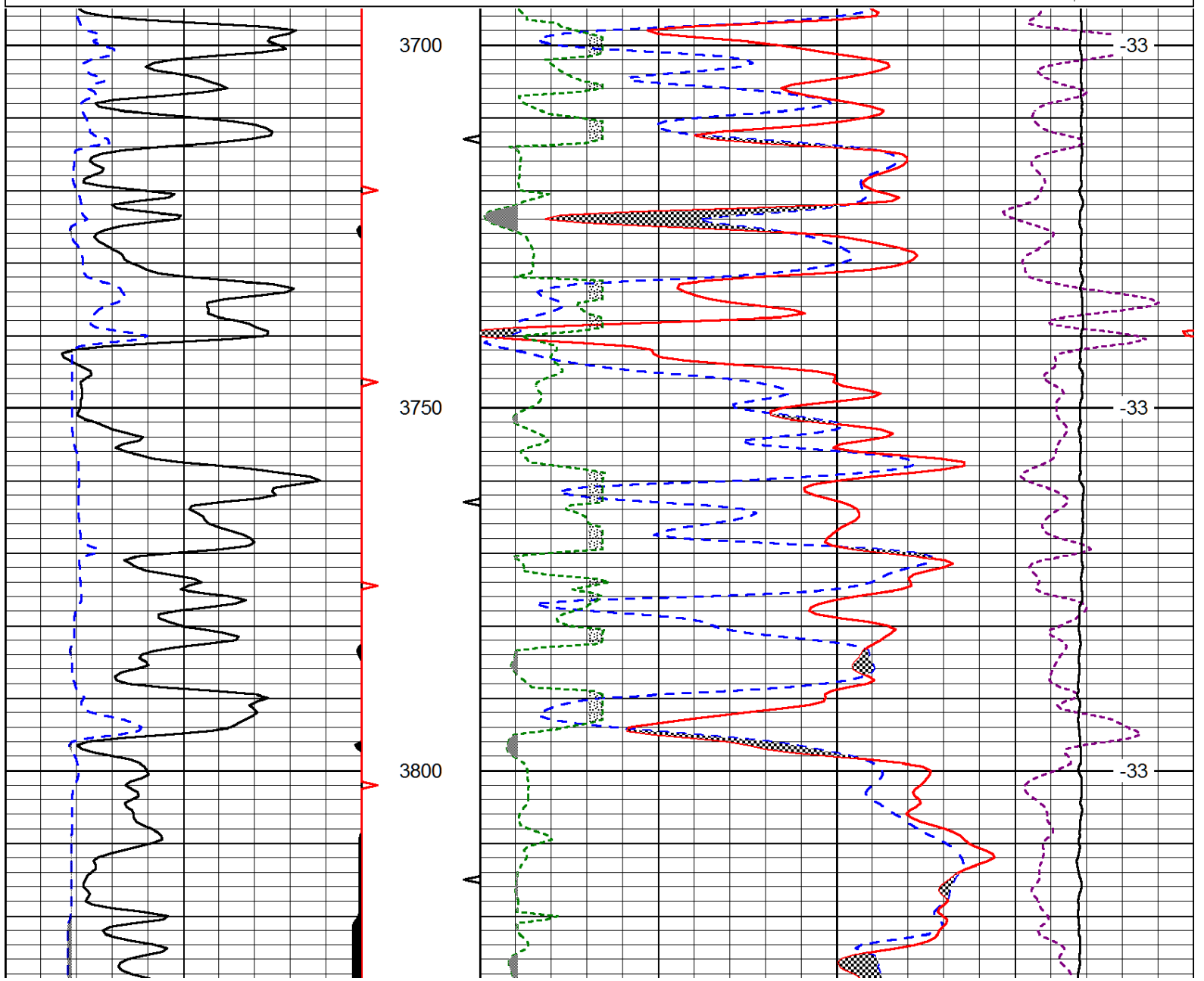
0	Gamma Ray (GAPI)	150
6	Caliper (in)	16

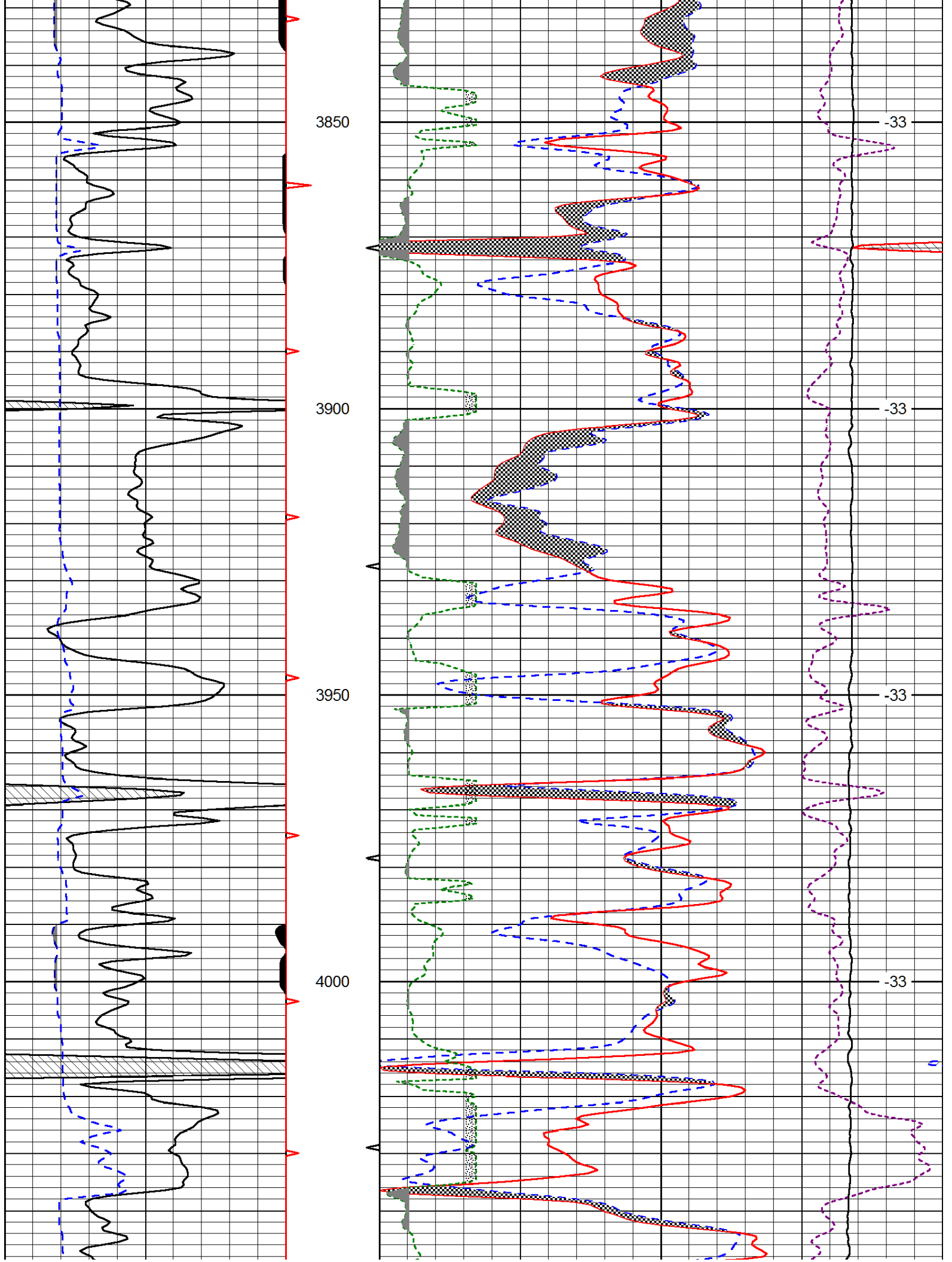
30	Compensated Density (pu)			-10	
2	Bulk Density (g/cc)			3	
15000	Line Tension (lb)			0	
2.625	DGA (g/cc)	3.425	-0.25	Correction (g/cc)	0.25
				LSPD (ft/min)	

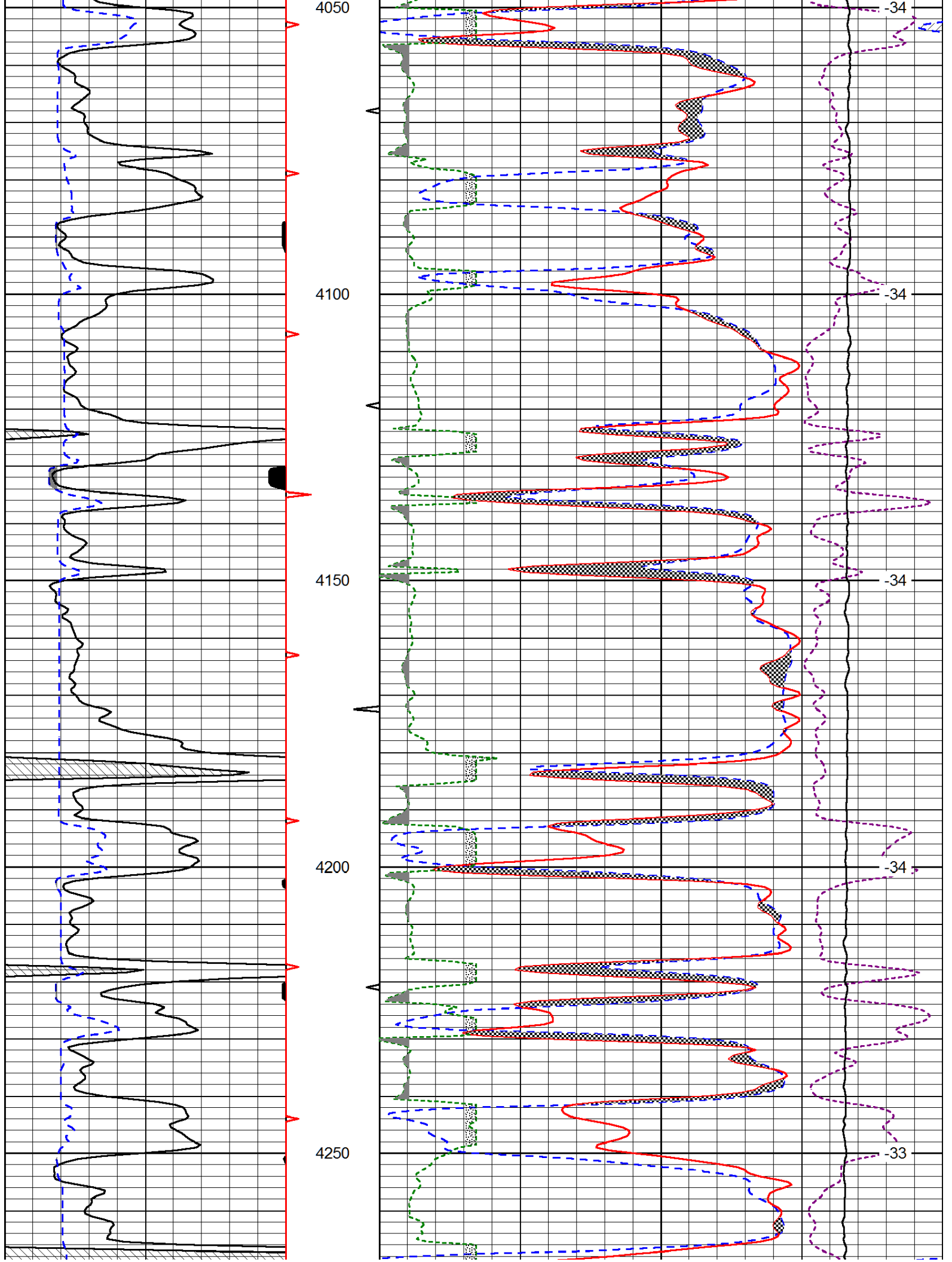
Database File: brito_stoll_1-19hd.db
 Dataset Pathname: dil/britstck
 Presentation Format: cndlspec
 Dataset Creation: Fri Dec 13 15:24:31 2013
 Charted by: Depth in Feet scaled 1:240

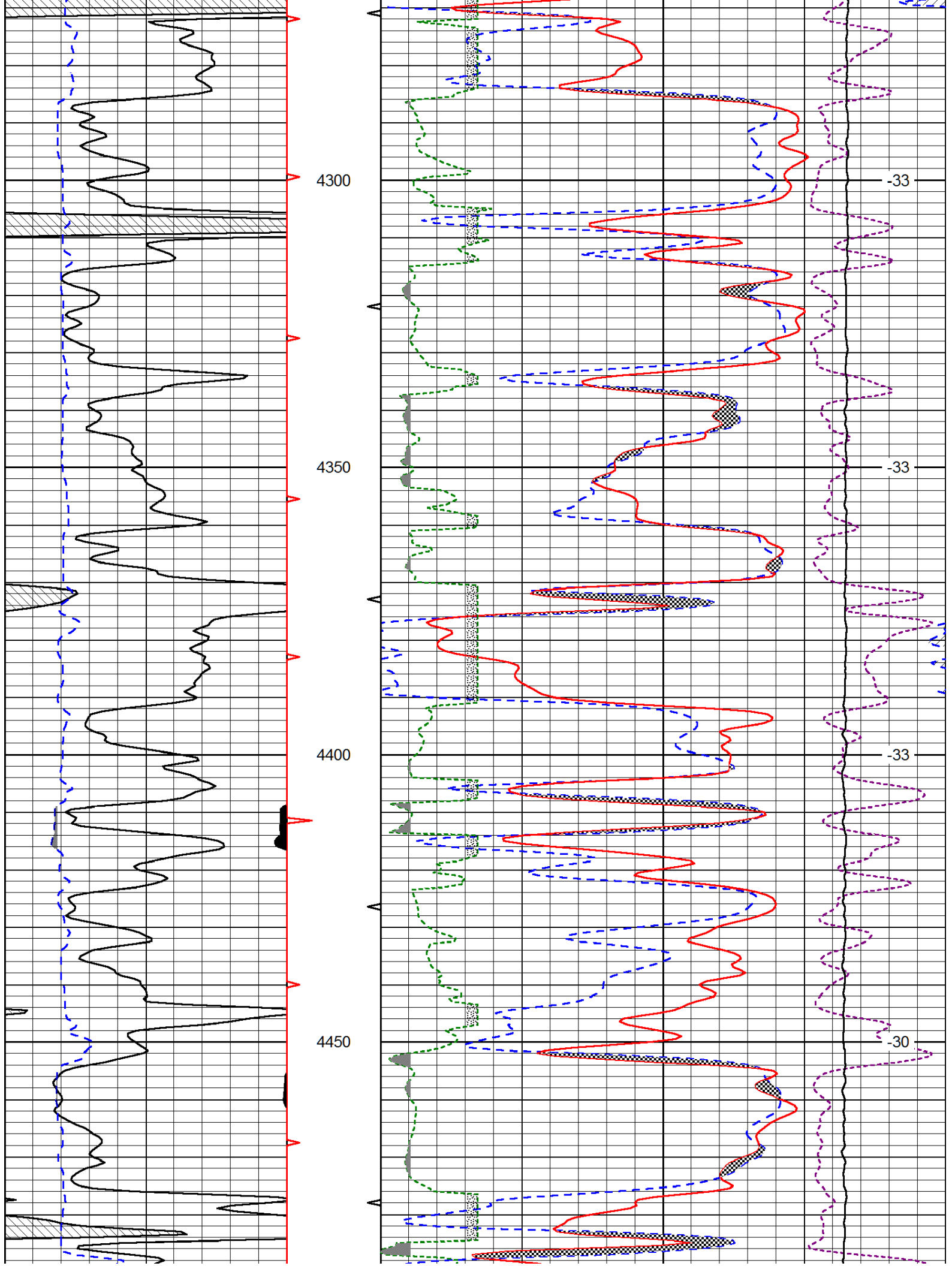
0	Gamma Ray (GAPI)	150
6	Caliper (in)	16

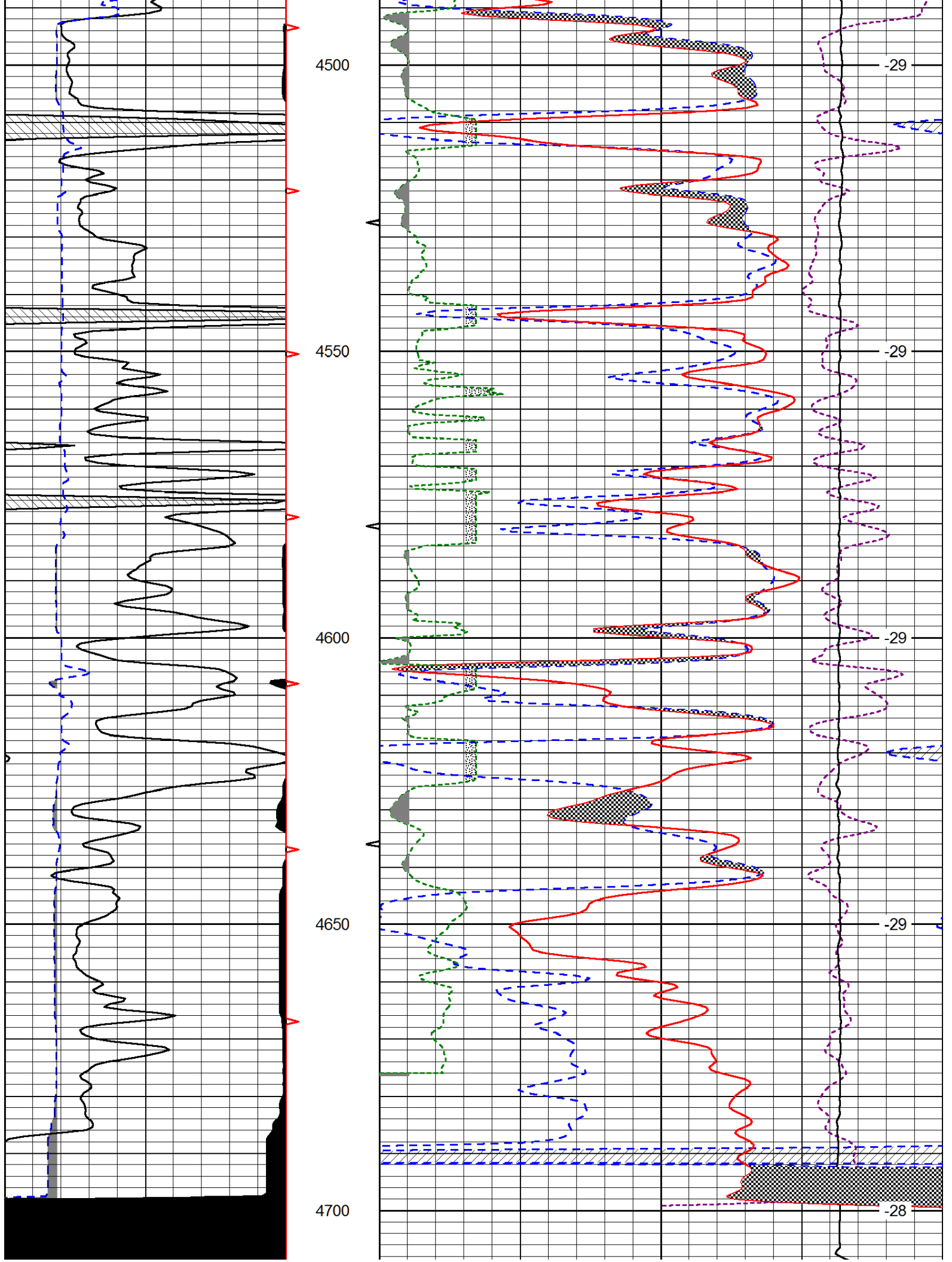
30	CNLS (pu)			-10	
30	Compensated Density (2.71 ma) (pu)			-10	
2.625	DGA (g/cc)	3.425	-0.25	Correction (g/cc)	0.25
10000	Line Tension (lb)			0	
				LSPD (ft/min)	











0	Gamma Ray (GAPI)	150
6	Caliper (in)	16

30	CNLS (pu)			-10	
30	Compensated Density (2.71 ma) (pu)			-10	
2.625	DGA (g/cc)	3.425	-0.25	Correction (g/cc)	0.25
10000	Line Tension (lb)			0	

LSPD (ft/min)
