



Pioneer Energy Services

Microresistivity Log

API No.

15-193-20,903-00-00

Company Brito Oil Company, Inc.

Well Stoll No. 1-19

Field Thomas State Kansas

County Thomas State Kansas

Location 1,990' FNL & 1,860' FWL

Sec: 19 Twp: 10S Rge: 31W

Permanent Datum Ground Level Elevation 3024

Log Measured From Kelly Bushing 10 Ft. Above Perm. Datum

Drilling Measured From Kelly Bushing

Other Services
CNL/CDL
DIL

Elevation
K.B. 3034
D.F. 3024
G.L. 3024

Date	12/13/2013
Run Number	Two
Depth Driller	4698
Depth Logger	4708
Bottom Logged Interval	4707
Top Log Interval	3700
Casing Driller	8.625 @ 263
Casing Logger	263
Bit Size	7.875
Type Fluid in Hole	Chemical
Salinity, ppm CL	2300
Density / Viscosity	9.1 59
pH / Fluid Loss	10.0 8.0
Source of Sample	Flowline
Rm @ Meas. Temp	1.60 @ 64
Rmf @ Meas. Temp	1.20 @ 64
Rmc @ Meas. Temp	2.16 @ 64
Source of Rmf / Rmc	Charts
Rm @ BHT	.83 @ 123
Operating Rig Time	4 Hours
Max Rec. Temp. F	123
Equipment Number	108
Location	Hays
Recorded By	J. Long
Witnessed By	Ken Wallace

<<< Fold Here >>>

All interpretations are opinions based on inferences from electrical or other measurements and we cannot and do not guarantee the accuracy or correctness of any interpretation, and we shall not, except in the case of gross or willful negligence on our part, be liable or responsible for any loss, costs, damages, or expenses incurred or sustained by anyone resulting from any interpretation made by any of our officers, agents or employees. These interpretations are also subject to our general terms and conditions set out in our current Price Schedule.

Comments

Thank you for using Log-Tech, Inc.
(785) 625-3858

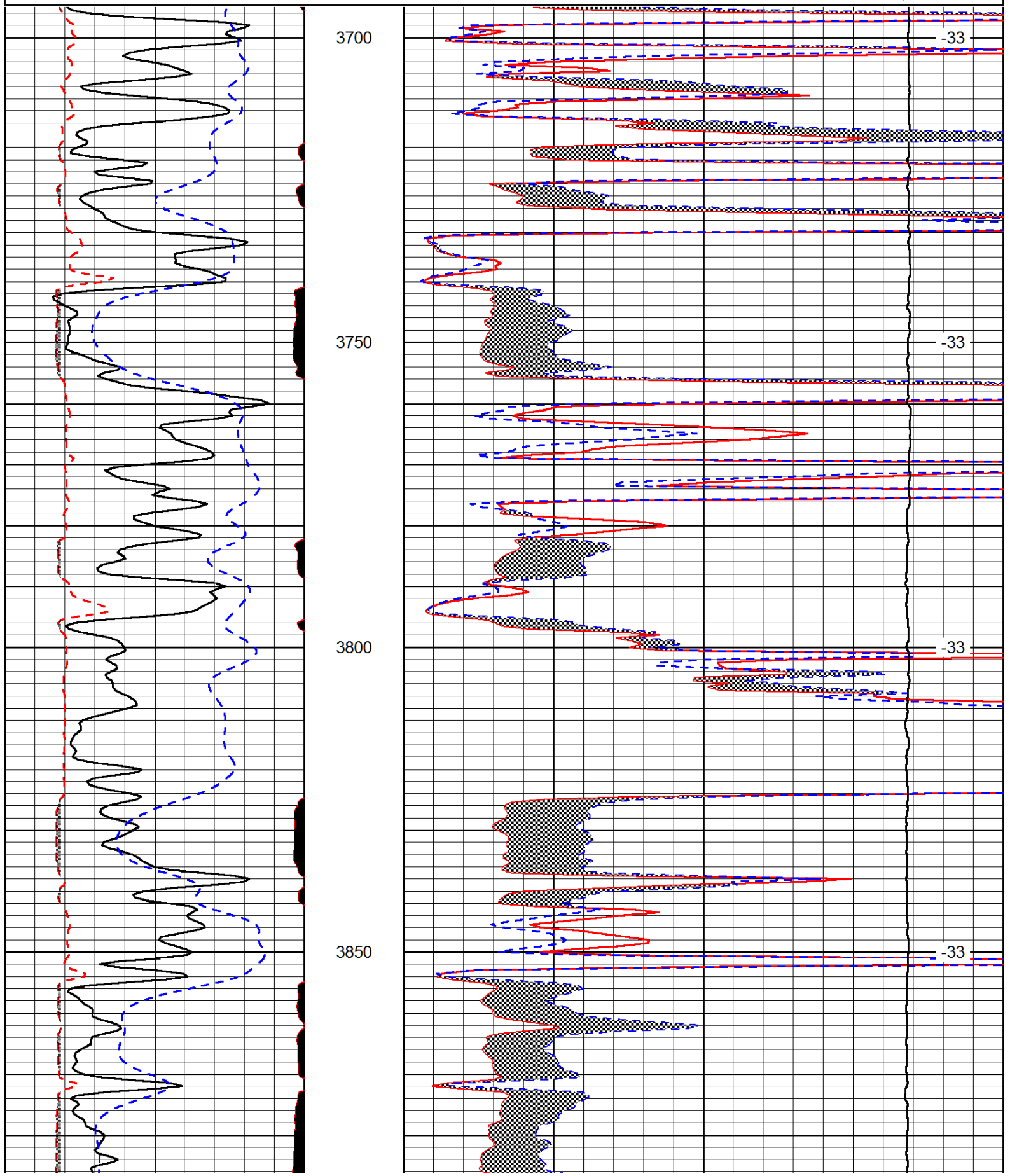
Oakley, North on Main Street to 8th Street, 2 blocks East to TH 30, North to C Road,
2 East across I-70, 1/2 North, East Into

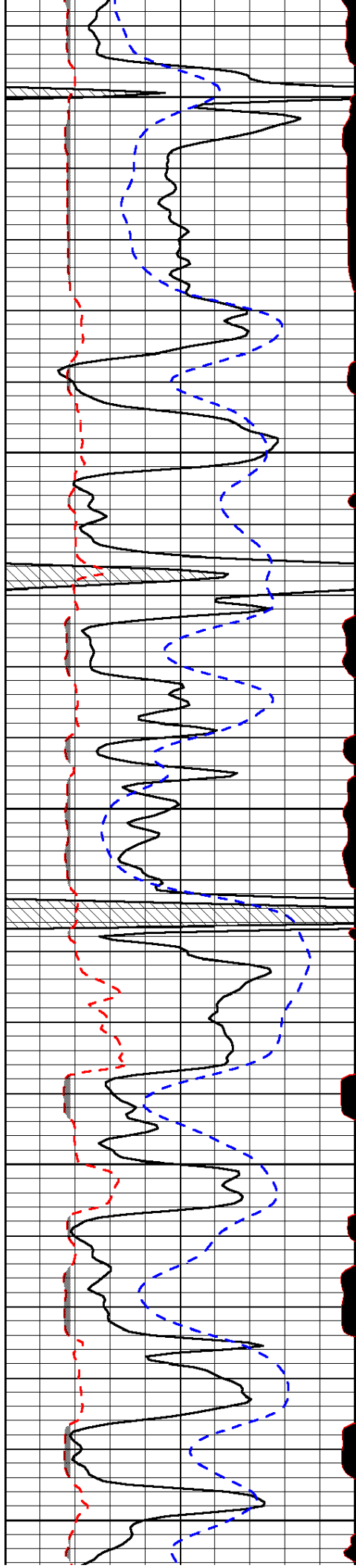
Database File: brito_stoll_1-19hd.db
 Dataset Pathname: dil/britstck
 Presentation Format: micro
 Dataset Creation: Fri Dec 13 15:24:31 2013
 Charted by: Depth in Feet scaled 1:240

0	Gamma Ray (GAPI)	150
6	MCAL (in)	16
2.875	Mud Cake (in)	7.875
-200	SP (mV)	0

0	Micro Inverse 1 X 1 (Ohm-m)	40
0	Micro Normal 2" (Ohm-m)	40
10000	Line Weight (lb)	0

LSPD
(ft/min)





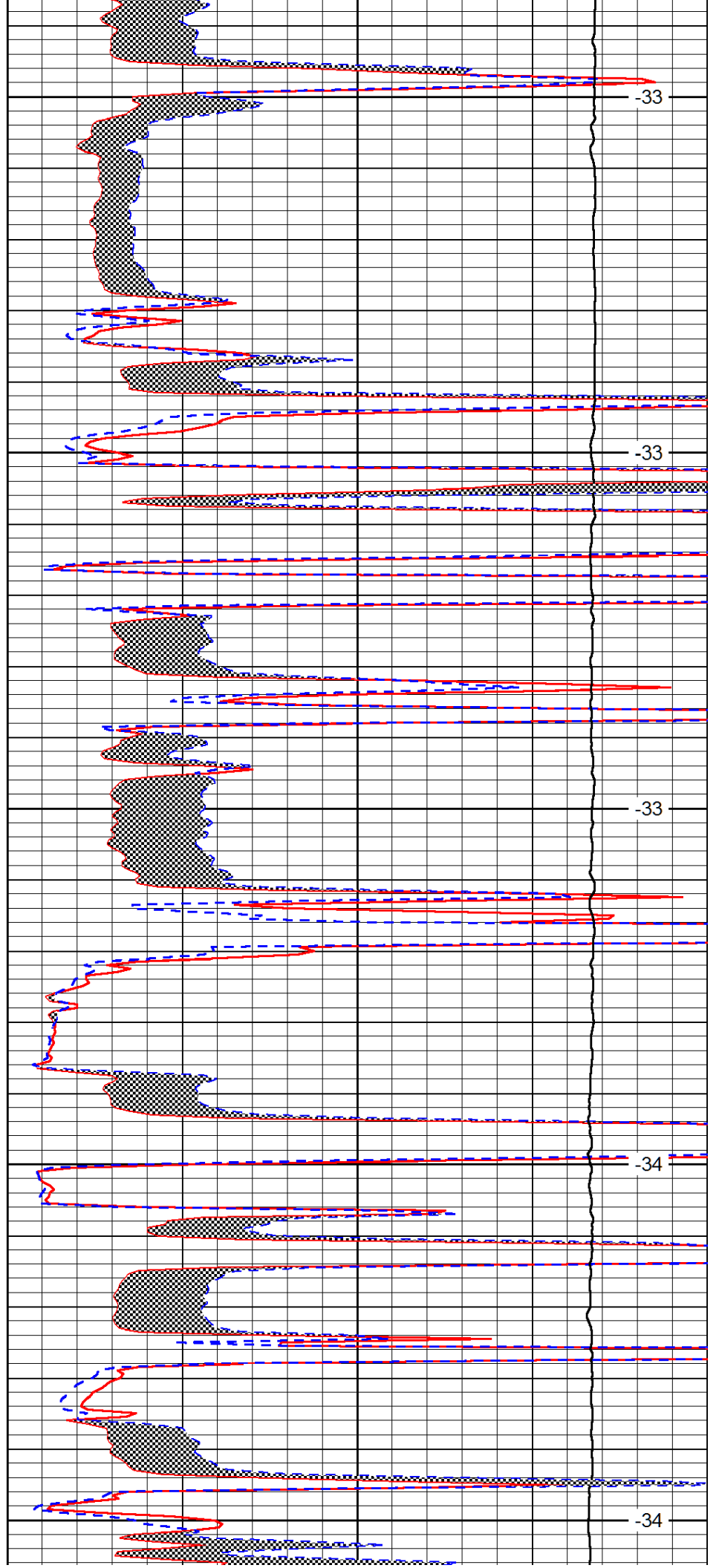
3900

3950

4000

4050

4100



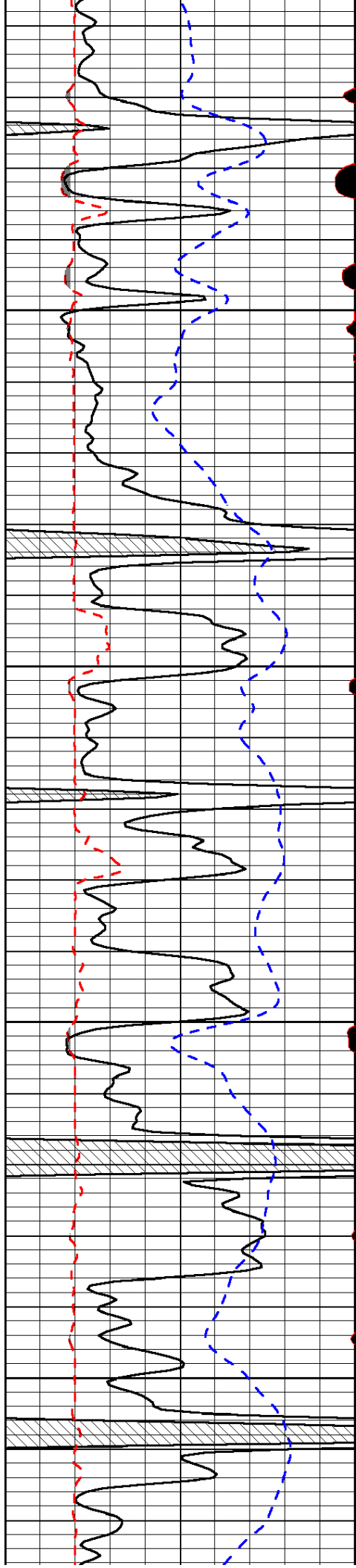
-33

-33

-33

-34

-34

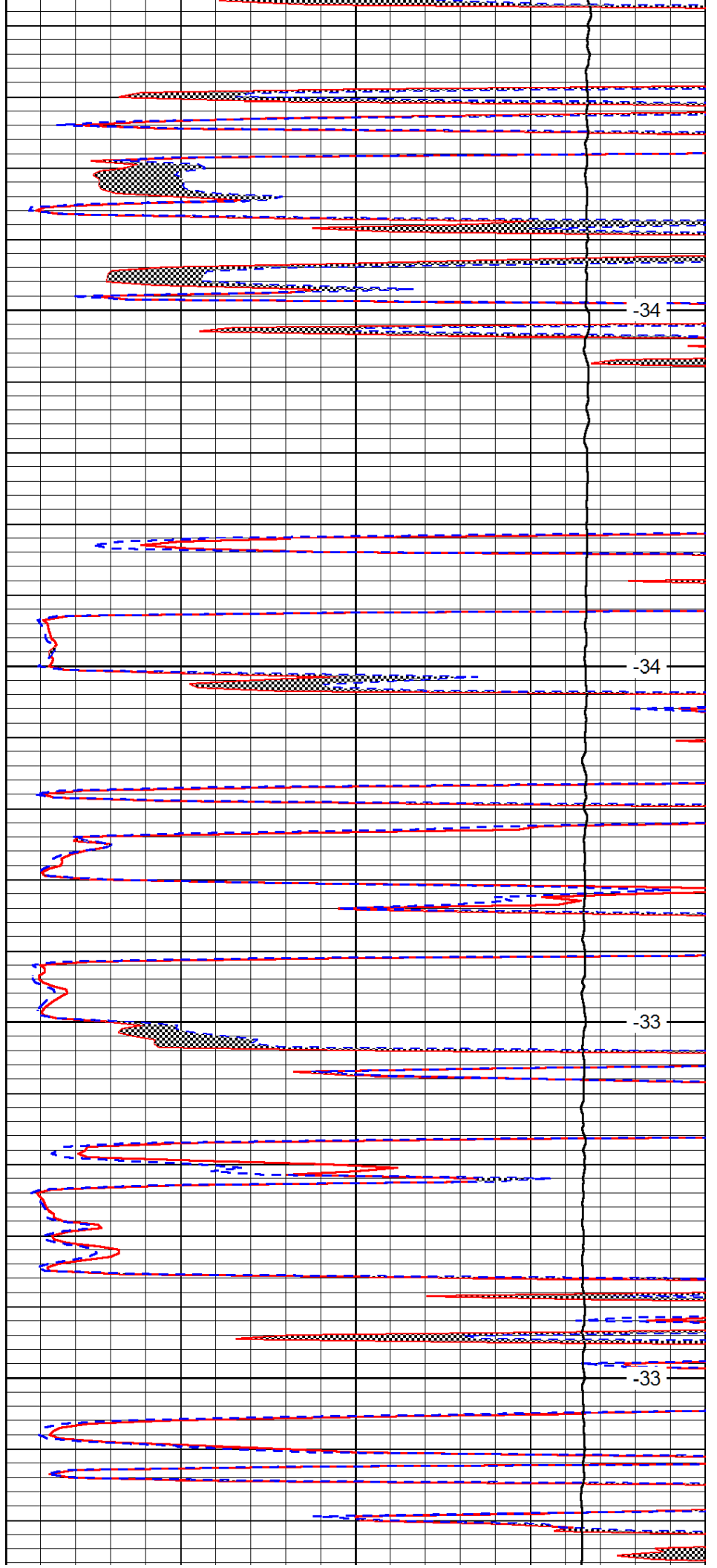


4150

4200

4250

4300

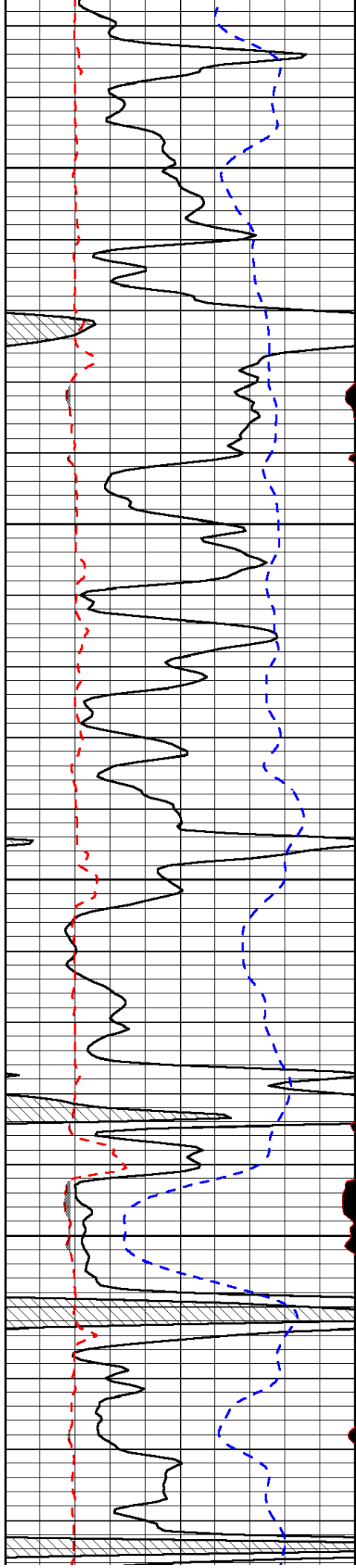


-34

-34

-33

-33

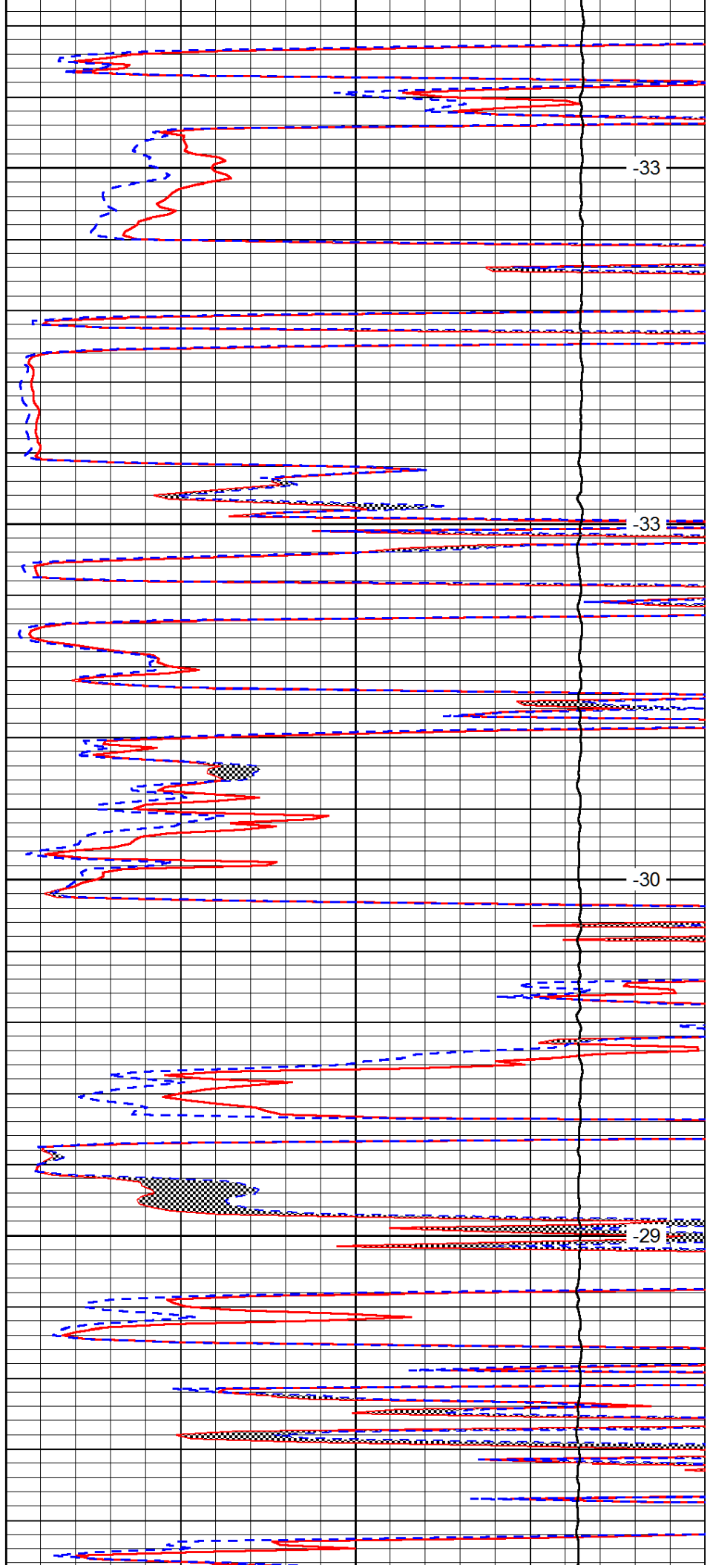


4350

4400

4450

4500

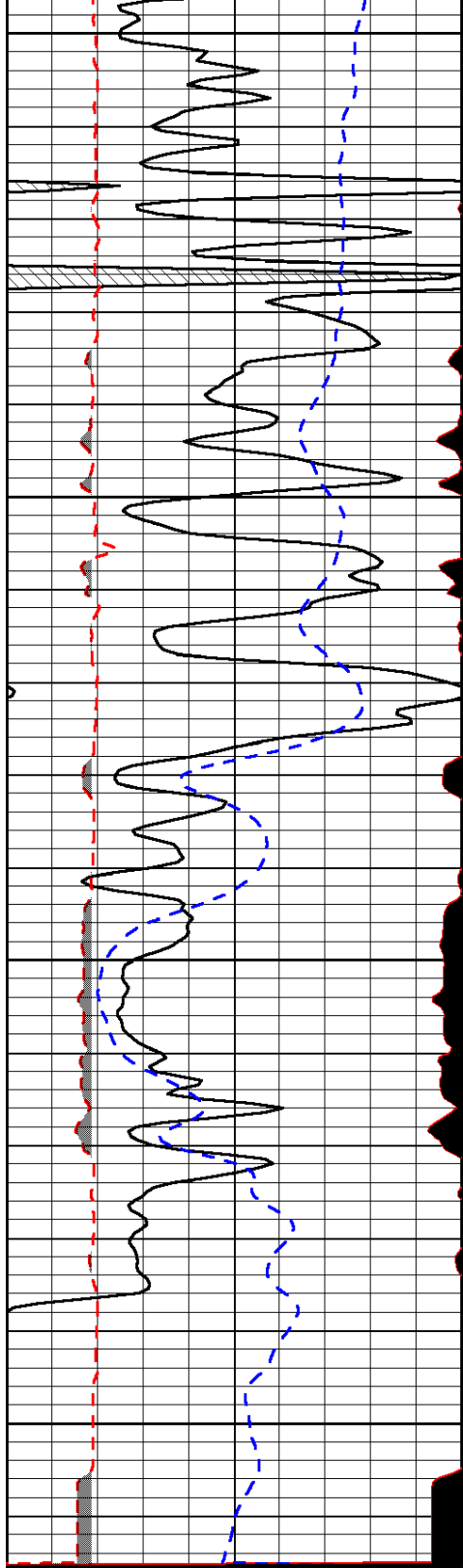


-33

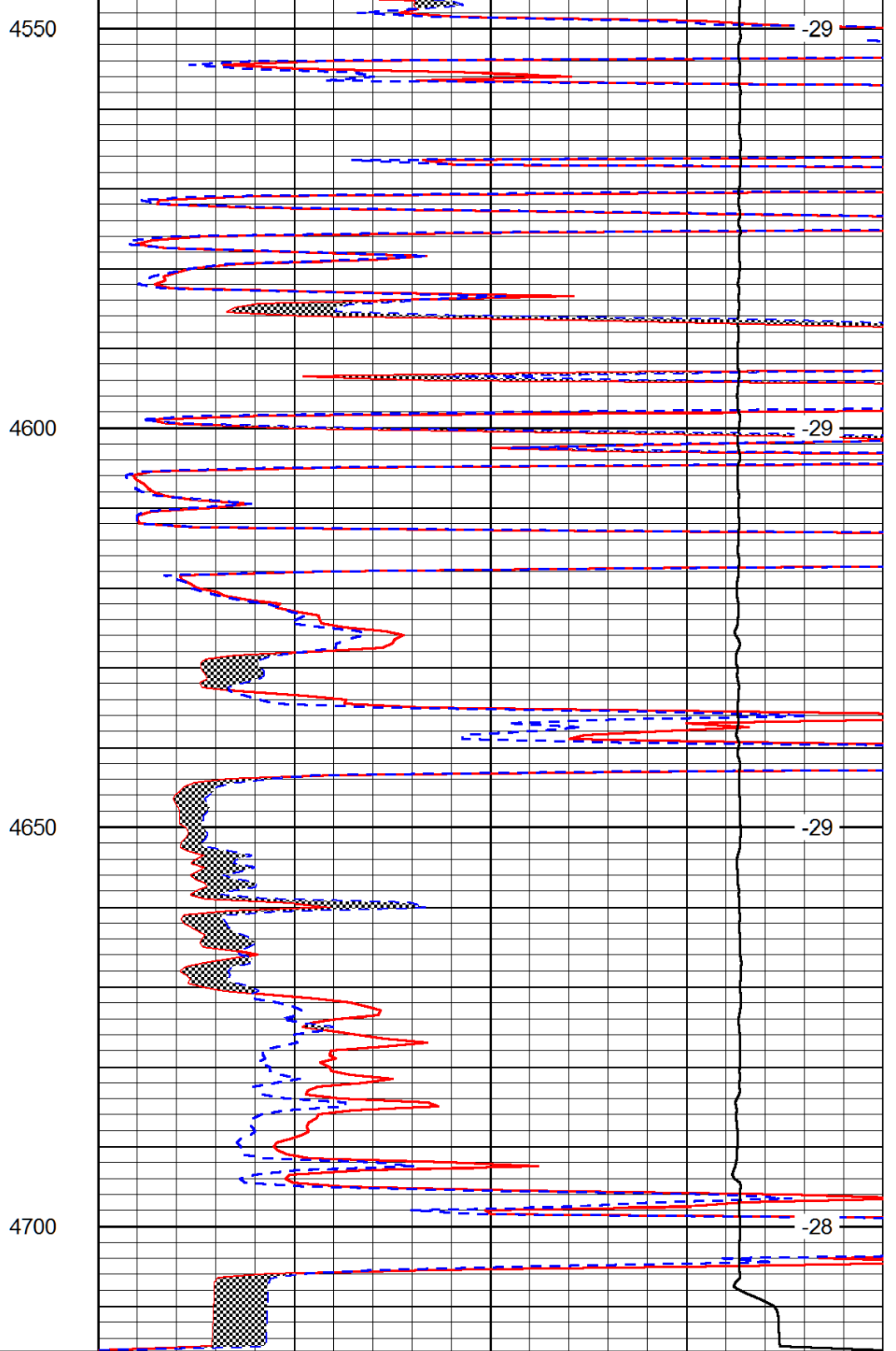
-33

-30

-29



0	Gamma Ray (GAPI)	150
6	MCAL (in)	16
2.875	Mud Cake (in)	7.875
-200	SP (mV)	0



0	Micro Inverse 1 X 1 (Ohm-m)	40
0	Micro Normal 2" (Ohm-m)	40
10000	Line Weight (lb)	0

LSPD
(ft/min)