



Pioneer Energy Services

Dual Compensated Porosity Log

API No.	15-015-24,006-00-00		
Company	Range Oil Company, Inc.		
Well	Entz Trust C #1		
Field	Potwin		
County	Butler		
Location	1550' FSL & 330' FEL		
	Sec: 9	Tw: 25S	Rge: 3E
			Elevation 1371
			K.B. 1381
			D.F. 1371
			G.L. 1371

Permanent Datum	Ground Level	Elevation 1371
Log Measured From	Kelly Bushing	10 Ft. Above Perm. Datum
Drilling Measured From	Kelly Bushing	
Date	12/4/2013	
Run Number	One	
Type Log	CNL / CDL	
Depth Driller	2831	
Depth Logger	2826	
Bottom Logged Interval	2824	
Top Logged Interval	2000	
Type Fluid In Hole	Chemical	
Salinity, PPM CL	900	
Density	9.4	
Level	Full	
Max. Rec. Temp. F	104	
Operating Rig Time	3 Hours	
Equipment -- Location	15 Days	
Recorded By	D Kerr	
Witnessed By	Frank Mize	

Borehole Record				Casing Record			
Run No.	Bit	From	To	Size	Wgt.	From	To
One	12.25	00	227	8.625	23#	00	227
Two	7.875	227	TD				

<<< Fold Here >>>

All interpretations are opinions based on inferences from electrical or other measurements and we cannot and do not guarantee the accuracy or correctness of any interpretation, and we shall not, except in the case of gross or willful negligence on our part, be liable or responsible for any loss, costs, damages, or expenses incurred or sustained by anyone resulting from any interpretation made by any of our officers, agents or employees. These interpretations are also subject to our general terms and conditions set out in our current Price Schedule.

Comments

Thank you for using Log-Tech, Inc.
(785) 625-3858

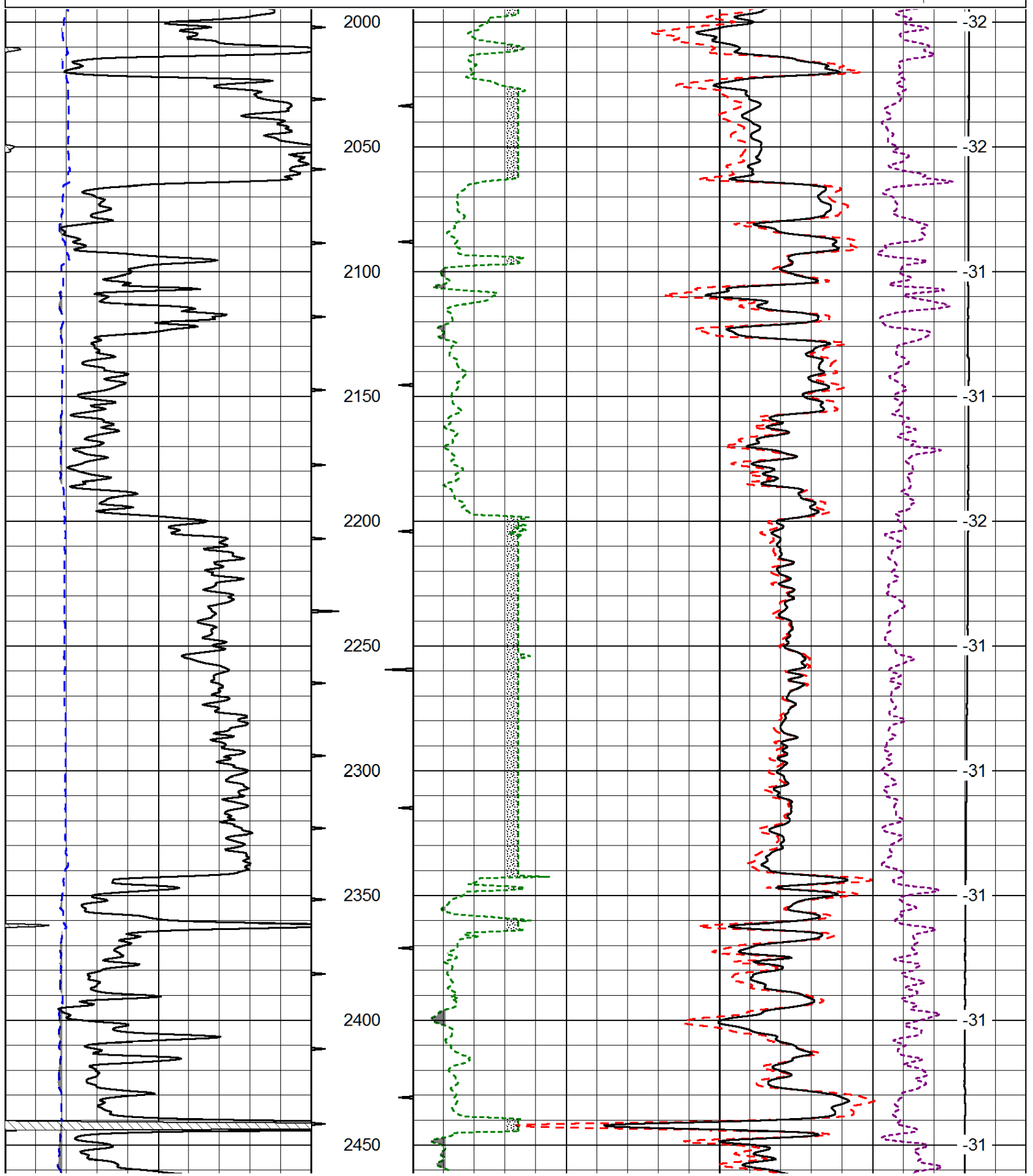
Whitewater KS, 1/2 East to Butler RD,
6 South to 30 RD, 2 East to Medowlark, 1 1/2 North, West Into

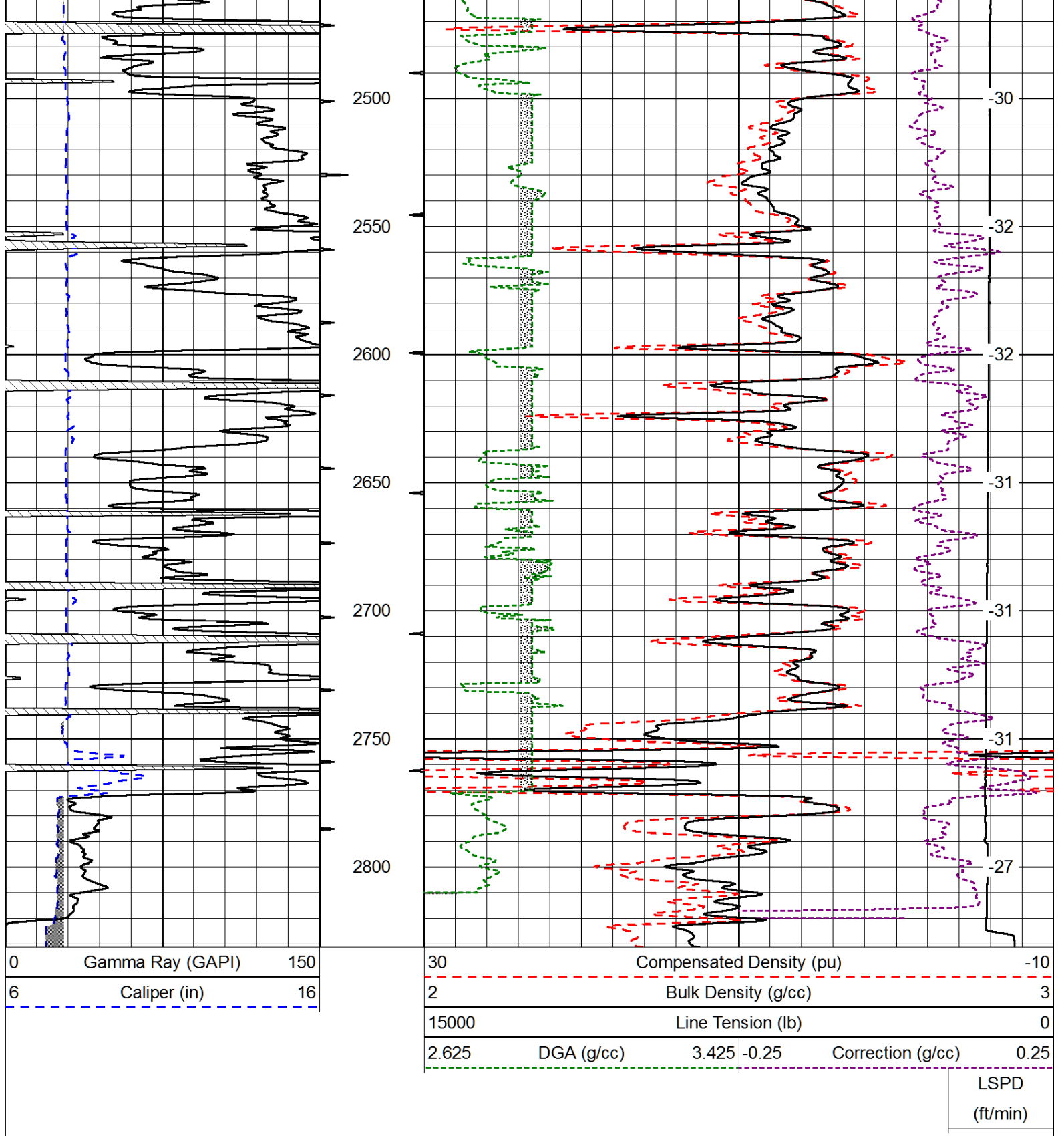
Database File: range_entstrust_c_1hd.db
 Dataset Pathname: DIL/rangstk
 Presentation Format: cdl
 Dataset Creation: Wed Dec 04 08:03:56 2013
 Charted by: Depth in Feet scaled 1:600

0	Gamma Ray (GAPI)	150
6	Caliper (in)	16

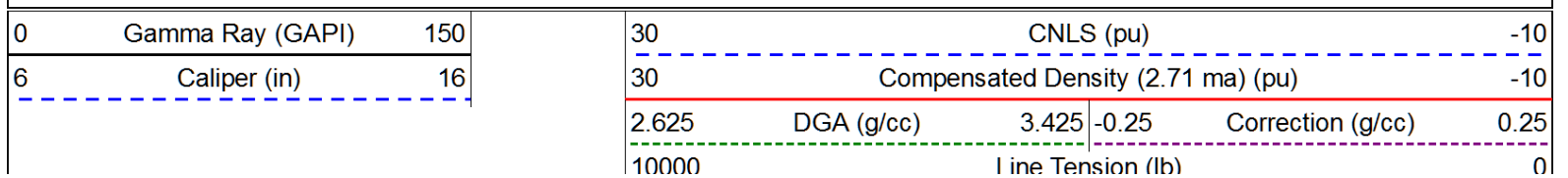
30	Compensated Density (pu)		-10
2	Bulk Density (g/cc)		3
15000	Line Tension (lb)		0
2.625	DGA (g/cc)	3.425	-0.25
			Correction (g/cc)
			0.25

LSPD
(ft/min)

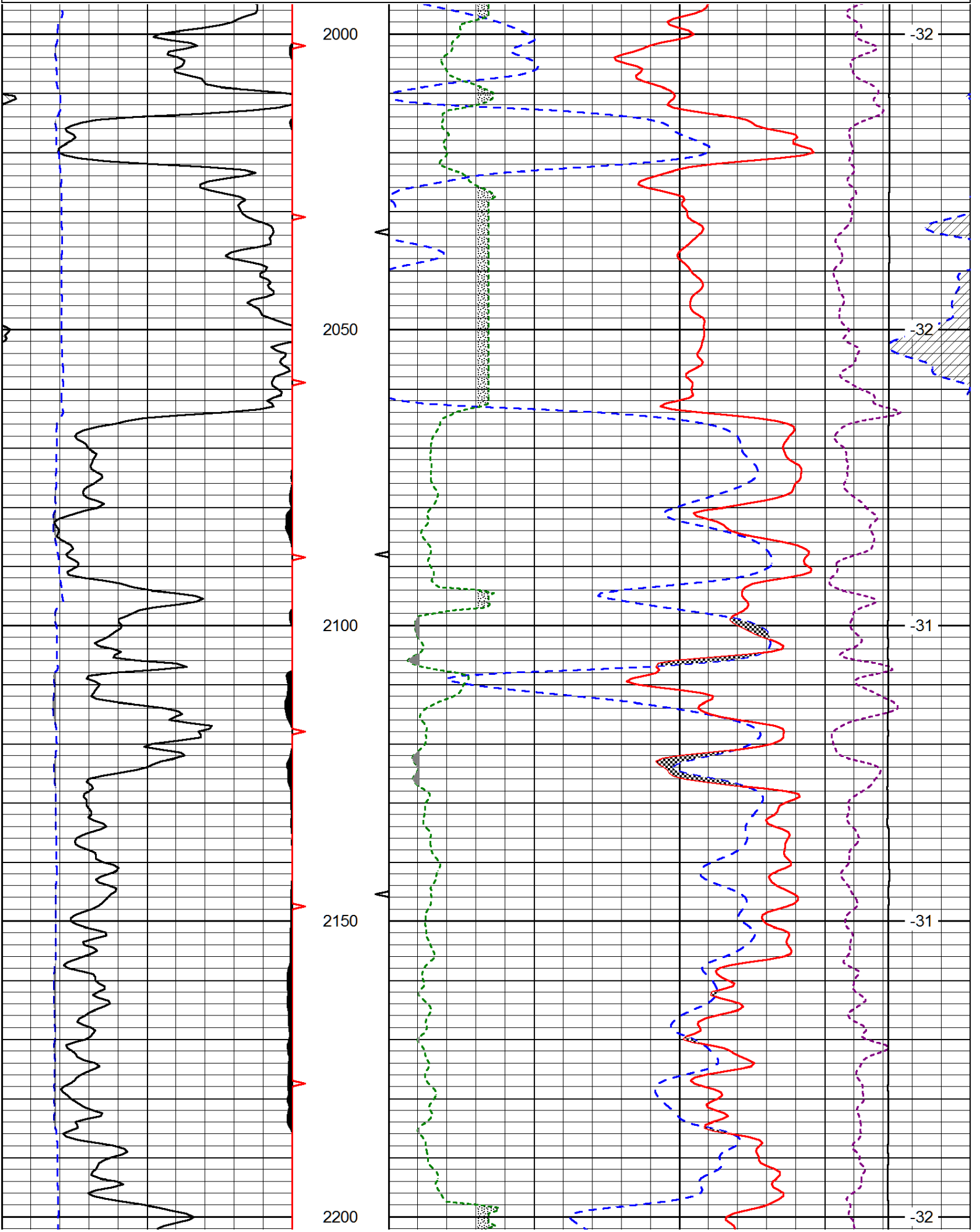


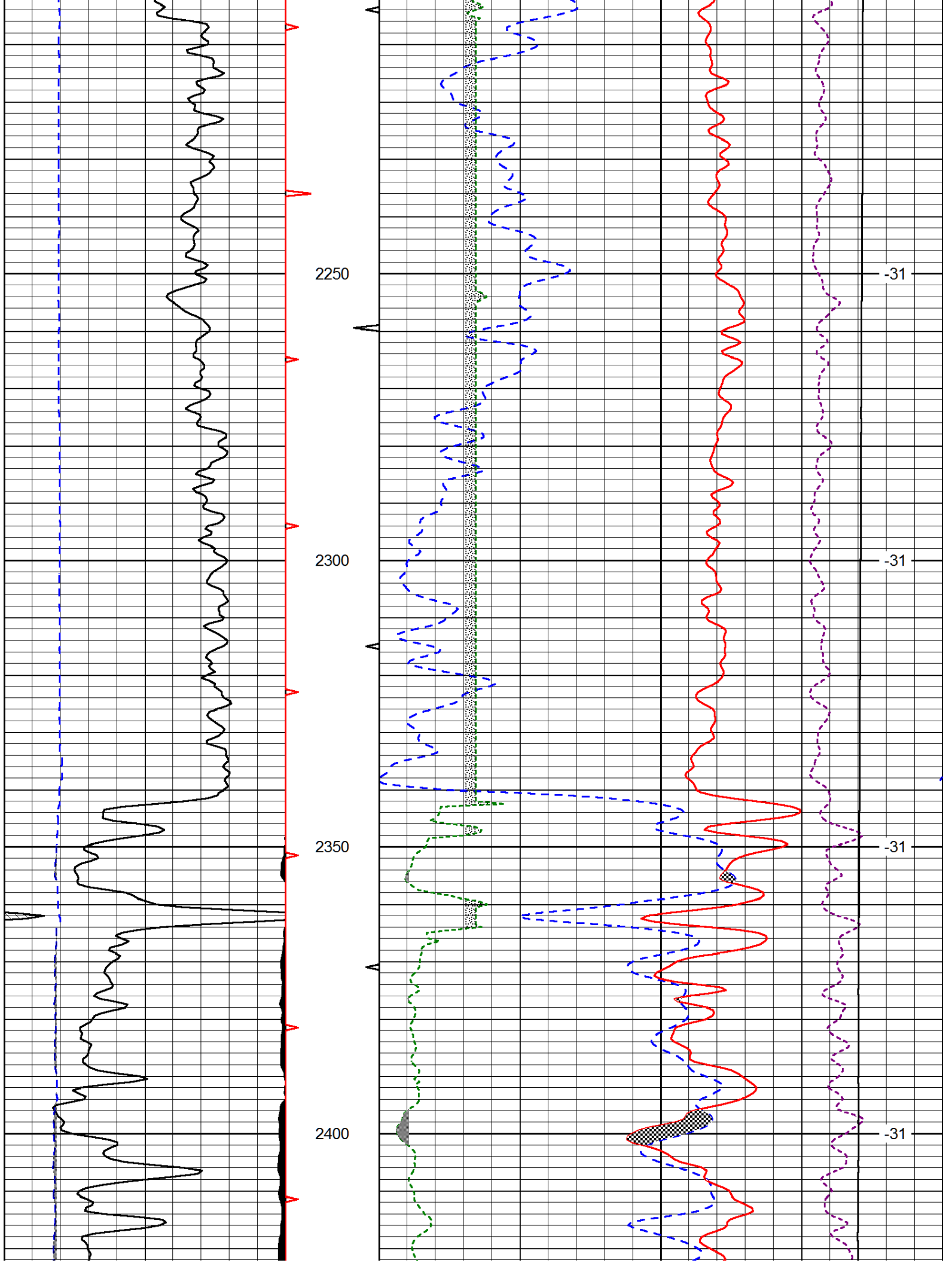


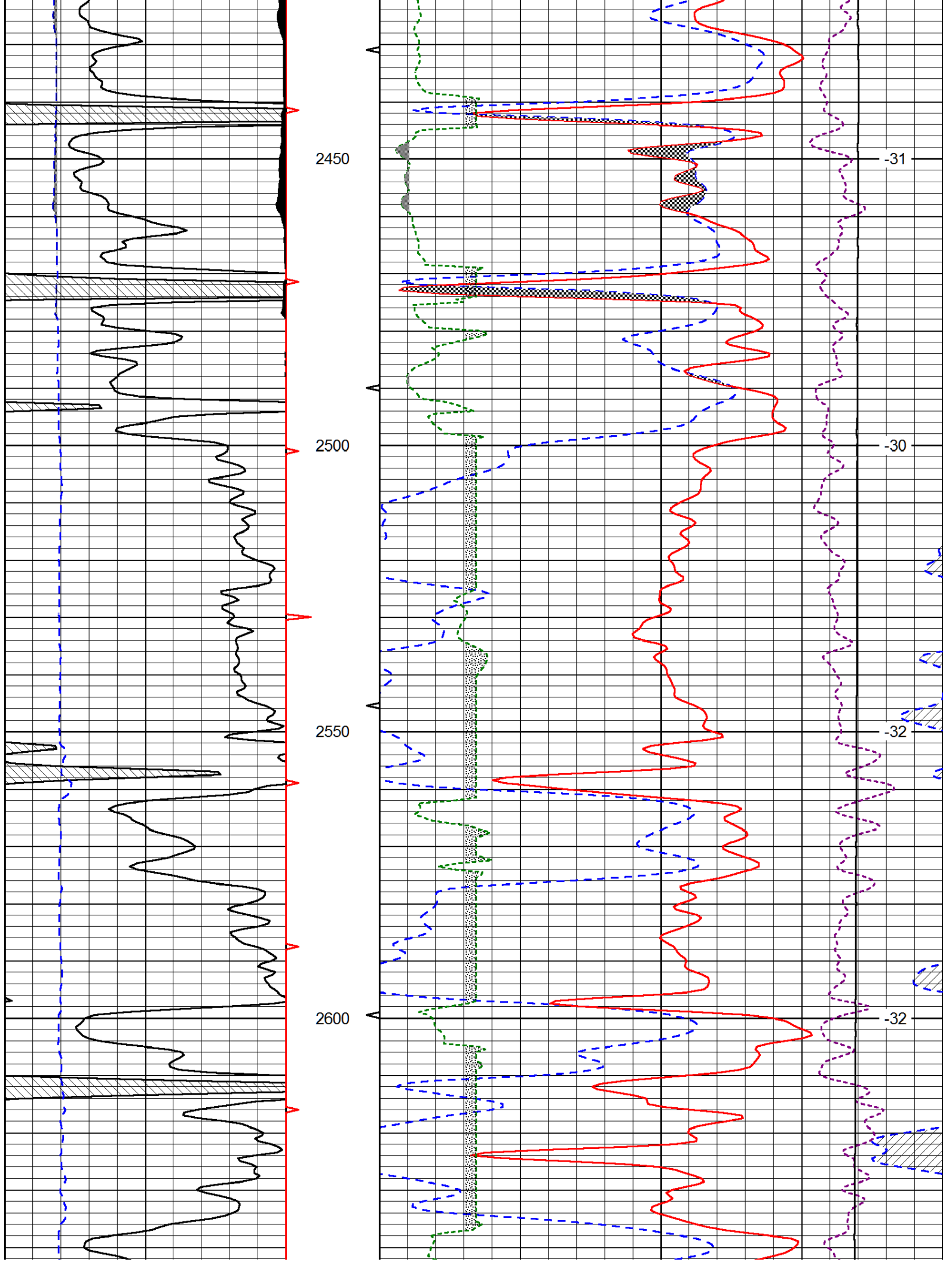
Database File: range_entstrust_c_1hd.db
 Dataset Pathname: DIL/rangstk
 Presentation Format: cndlspec
 Dataset Creation: Wed Dec 04 08:03:56 2013
 Charted by: Depth in Feet scaled 1:240

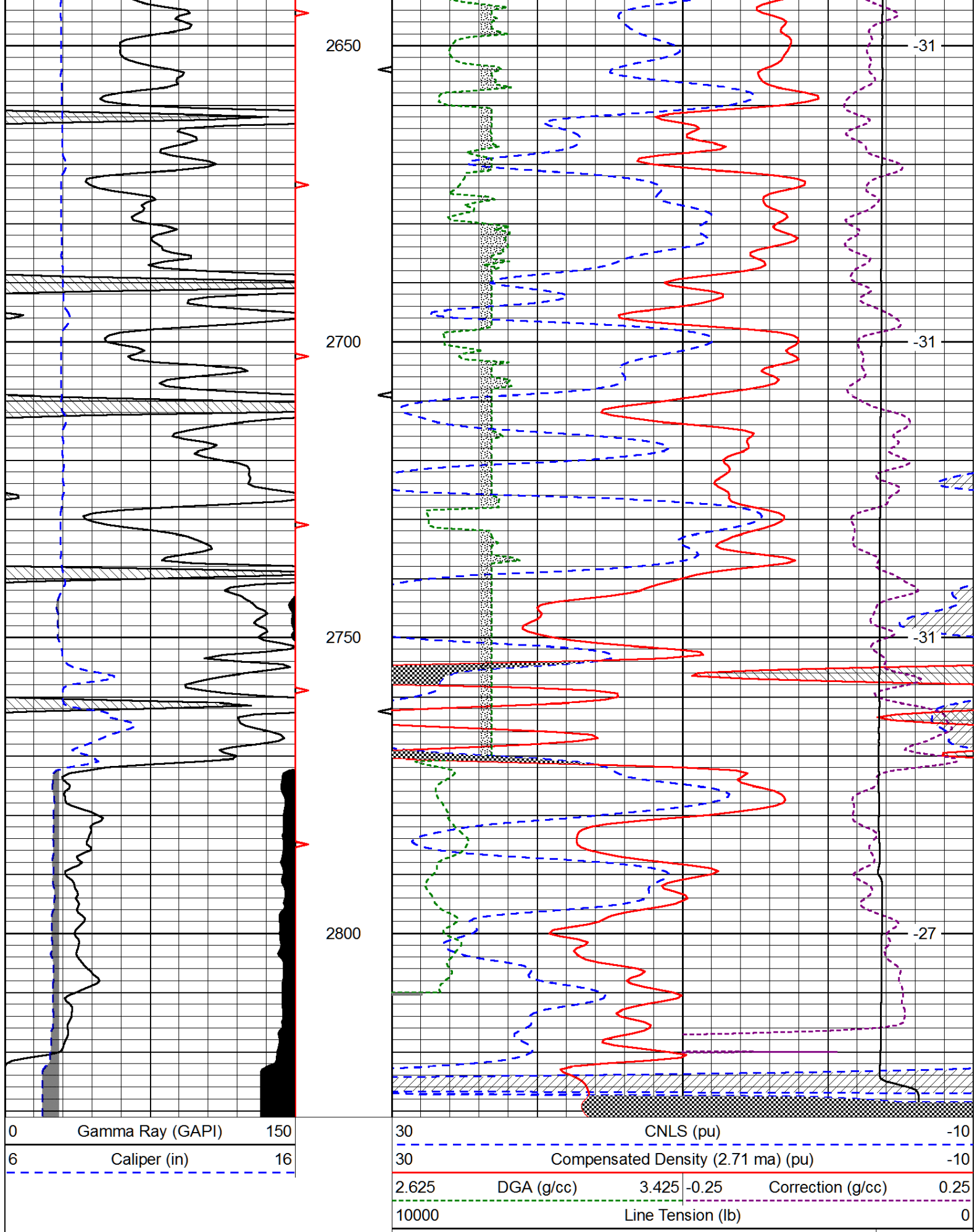


LSPD
(ft/min)









0	Gamma Ray (GAPI)	150
6	Caliper (in)	16

30	CNLS (pu)		-10
30	Compensated Density (2.71 ma) (pu)		-10
2.625	DGA (g/cc)	3.425	-0.25
		Correction (g/cc)	0.25
10000	Line Tension (lb)		0

LSPD (ft/min)
