



Radiation Guard Log

DIGITAL LOG (785) 625-3858

API No.	15-009-25,447-00-00		
Company	Craig Oil Company		
Well	Nuss B-2		
Field	Nuss		
County	Barton	State	Kansas
Location	1,100' FNL & 1,370' FEL		
Sec: 5	Twp: 16S	Rge: 14W	Elevation K.B. 1941 D.F. 1934 G.L. 1934
Permanent Datum	Ground Level	Elevation 1934	
Log Measured From	Kelly Bushing	7 Ft. Above Perm. Datum	
Drilling Measured From	Kelly Bushing		

Date	7/13/2010	
Run Number	One	
Depth Driller	3432	
Depth Logger	3431	
Bottom Logged Interval	3430	
Top Log Interval	400	
Casing Driller	8.625 @ 431	
Casing Logger	429	
Bit Size	7.875	
Type Fluid in Hole	Chemical	
Salinity, ppm CL	5000	
Density / Viscosity	9.4	58
pH / Fluid Loss	10.0	9.6
Source of Sample	Flowline	
Rm @ Meas. Temp	.71	@ 78
Rmf @ Meas. Temp	.53	@ 78
Rmc @ Meas. Temp	.96	@ 78
Source of Rmf / Rmc	Charts	
Rm @ BHT	.50	@ 110
Operating Rig Time	3 Hours	
Max Rec. Temp. F	110	
Equipment Number	10	
Location	Hays	
Recorded By	J. Long	
Witnessed By	Francis Whisler	

<<< Fold Here >>>

All interpretations are opinions based on inferences from electrical or other measurements and we cannot and do not guarantee the accuracy or correctness of any interpretation, and we shall not, except in the case of gross or willful negligence on our part, be liable or responsible for any loss, costs, damages, or expenses incurred or sustained by anyone resulting from any interpretation made by any of our officers, agents or employees. These interpretations are also subject to our general terms and conditions set out in our current Price Schedule.

Comments

Thank you for using Log-Tech, Inc.
(785) 625-3858

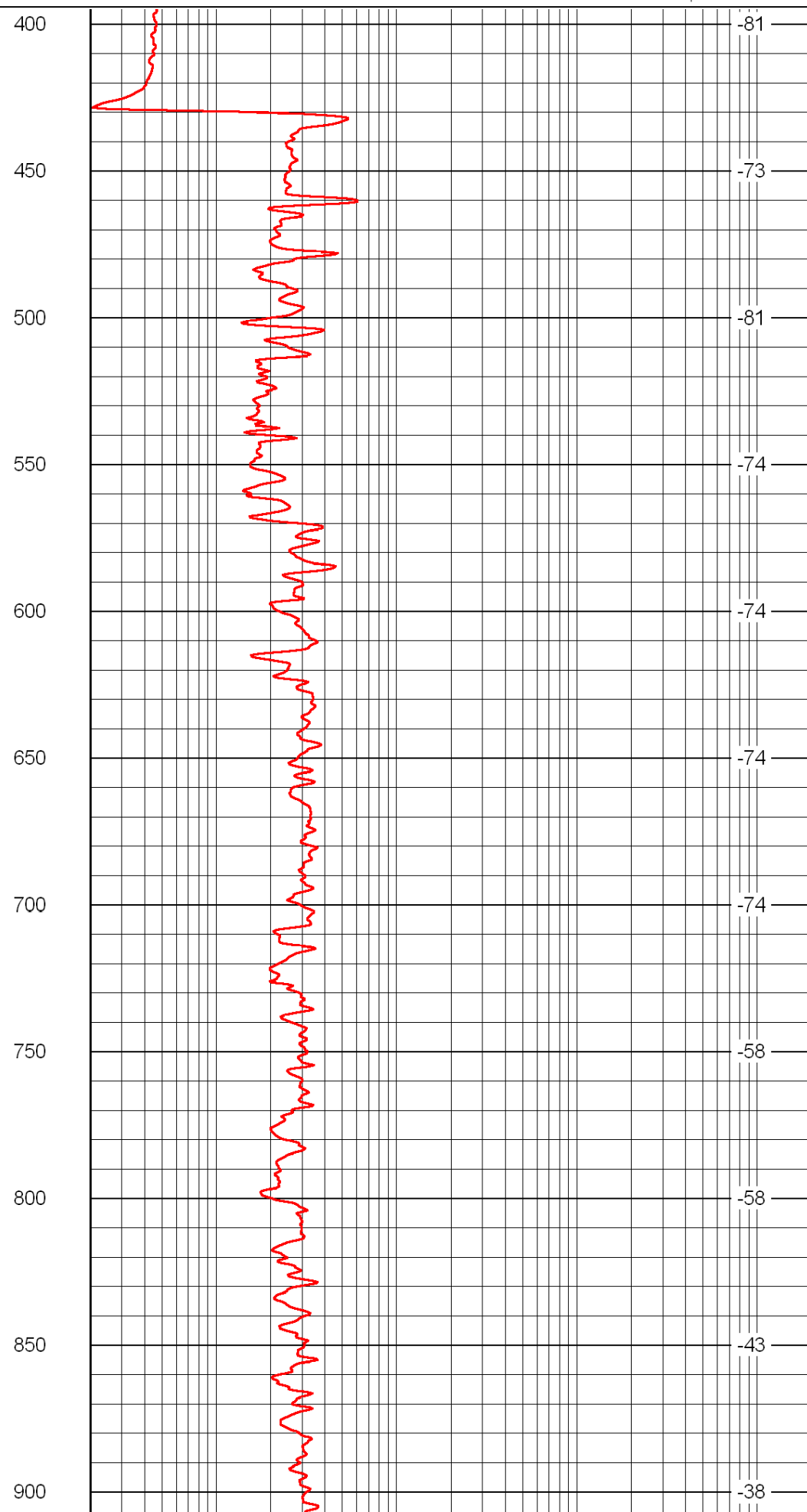
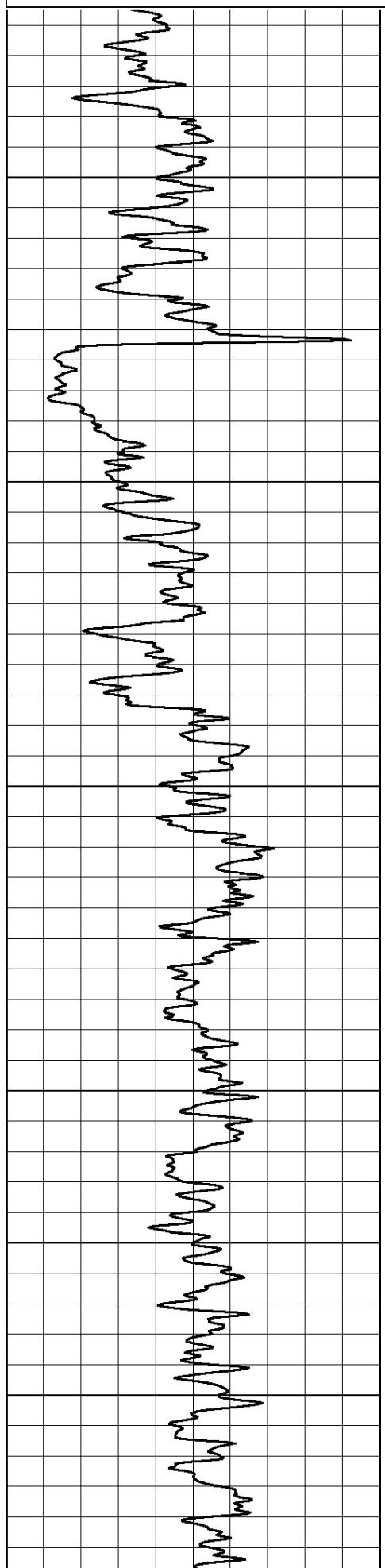
Russell, South to Barton County Line, 1 1/2 West, 1/4 South, West Into

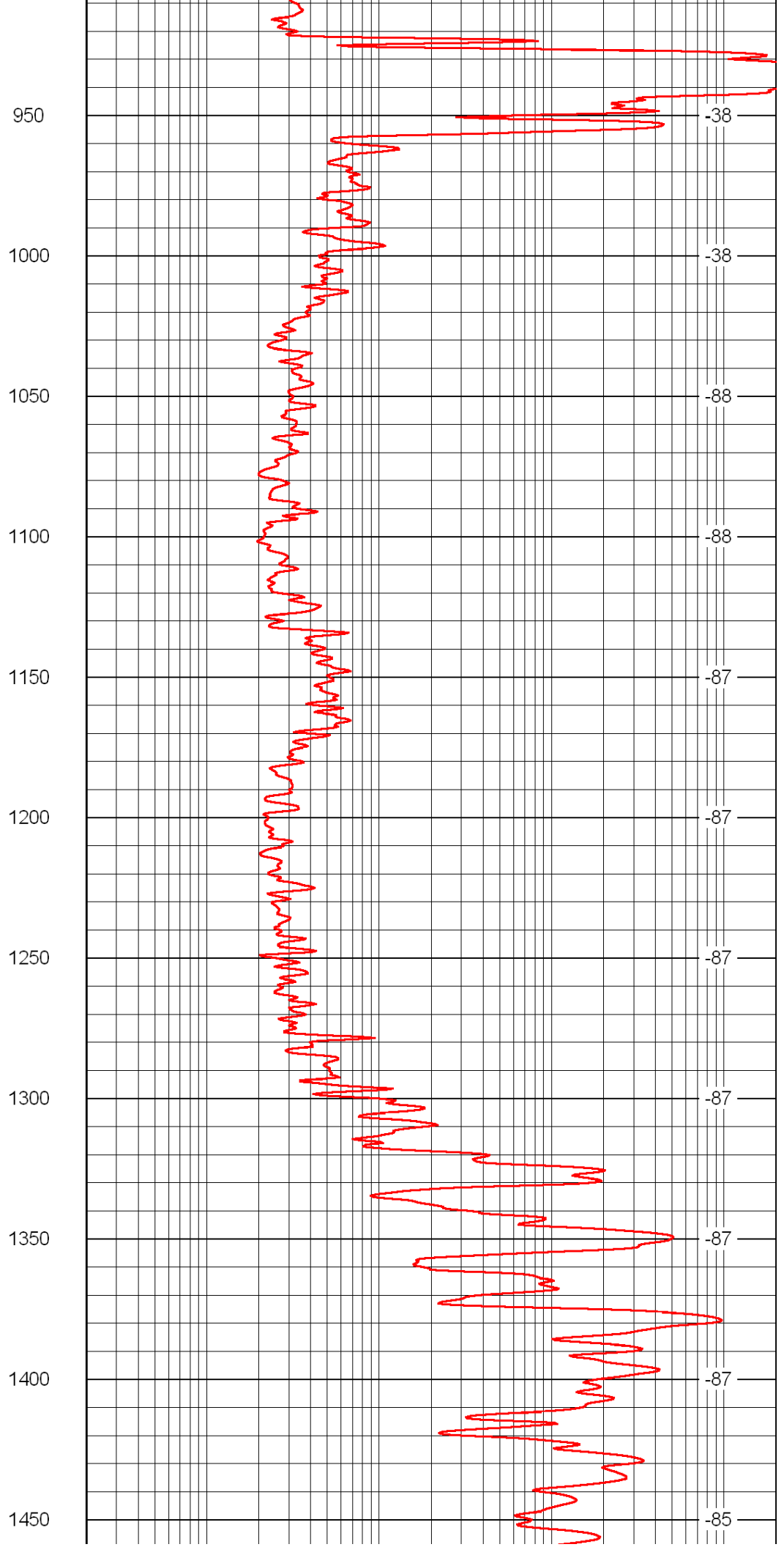
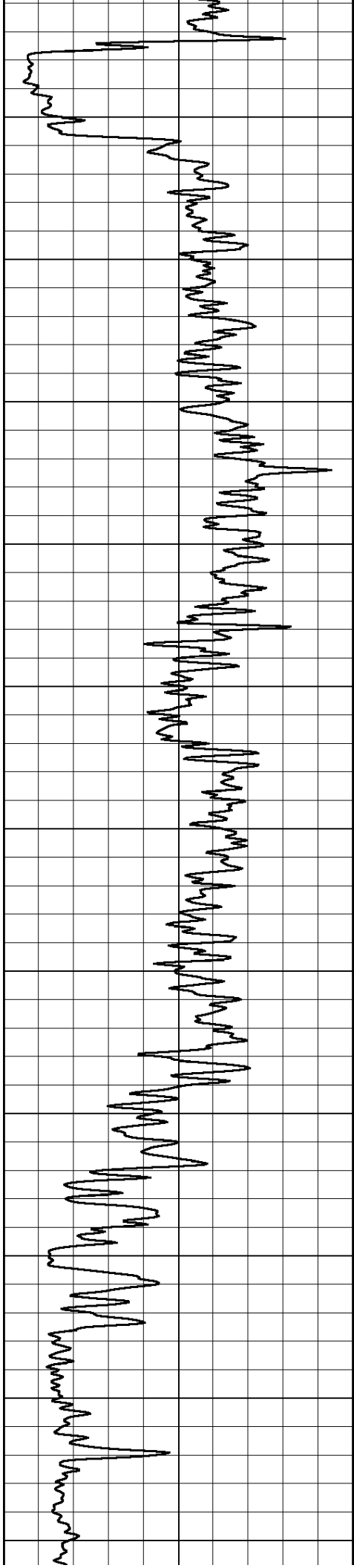
Database File: c:\warrior\data\craig oil_nuss b-2\craigoil.db
 Dataset Pathname: rag/crrg
 Presentation Format: rag2in
 Dataset Creation: Wed Jul 14 12:22:52 2010
 Charted by: Depth in Feet scaled 1:600

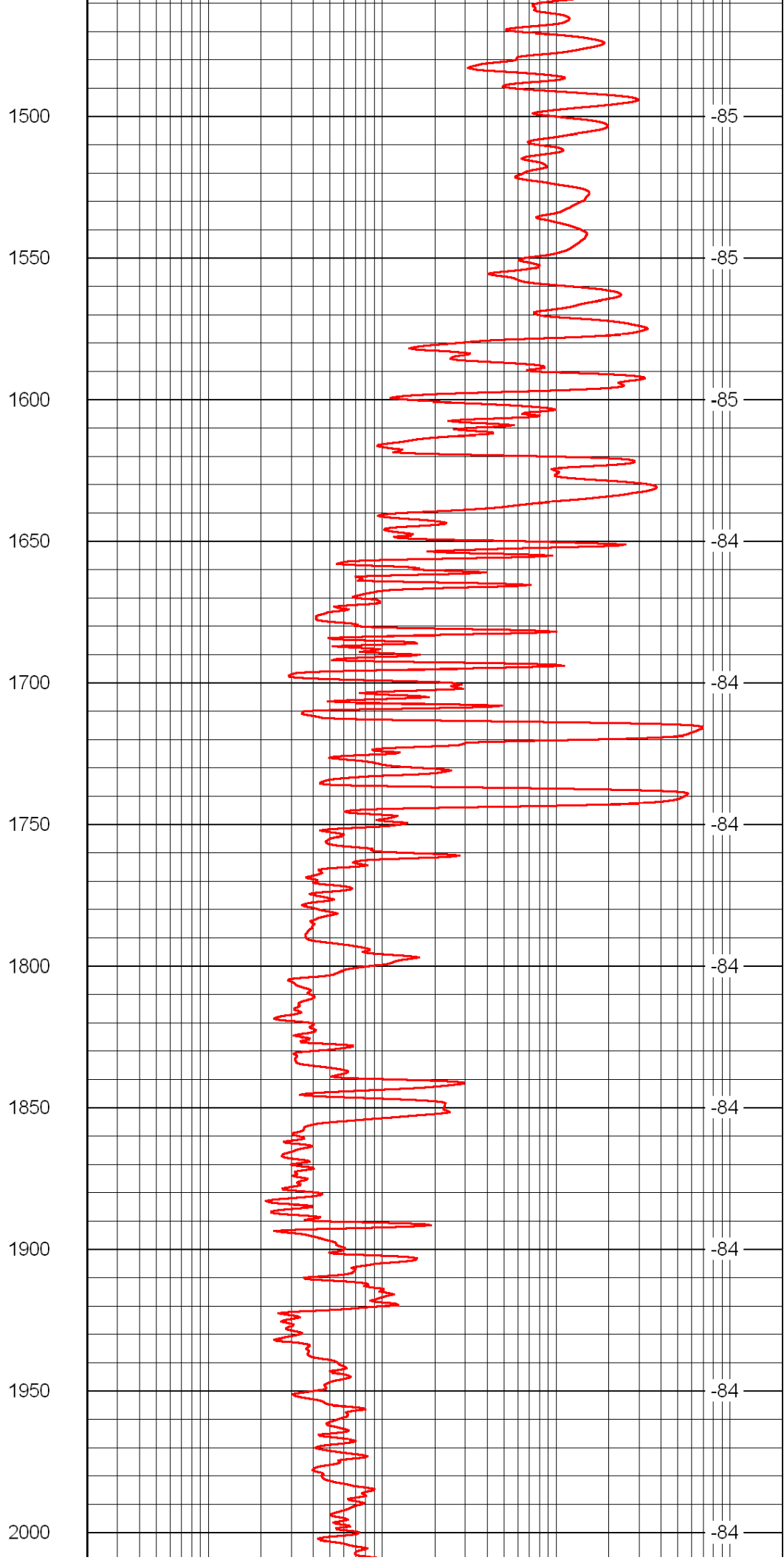
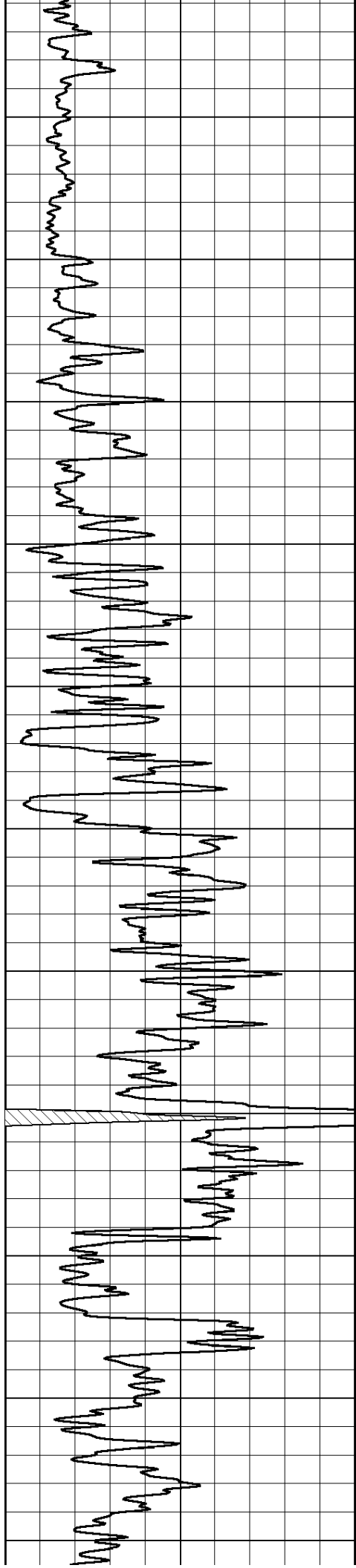
0 Gamma Ray 150

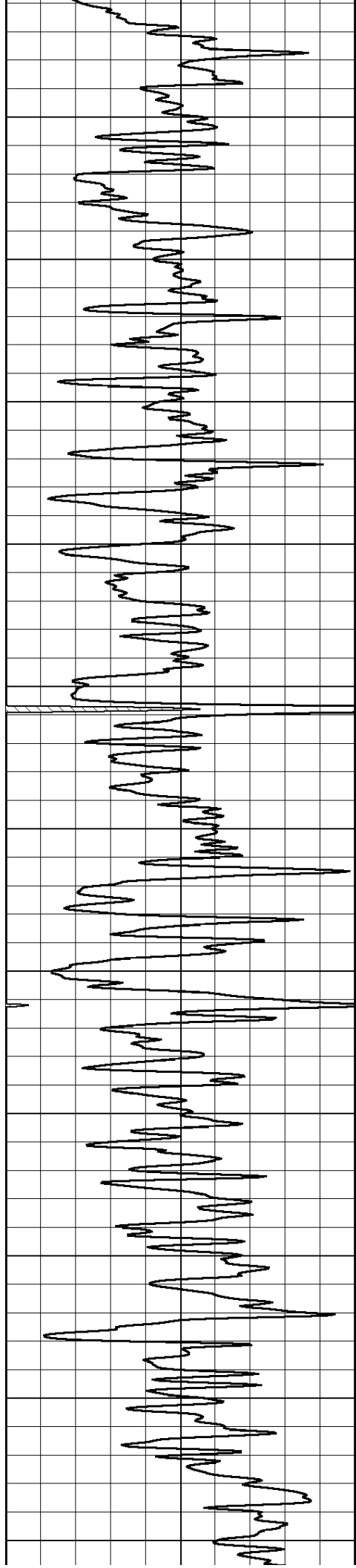
0.2 lgrd 2000

LSPD









2050

2100

2150

2200

2250

2300

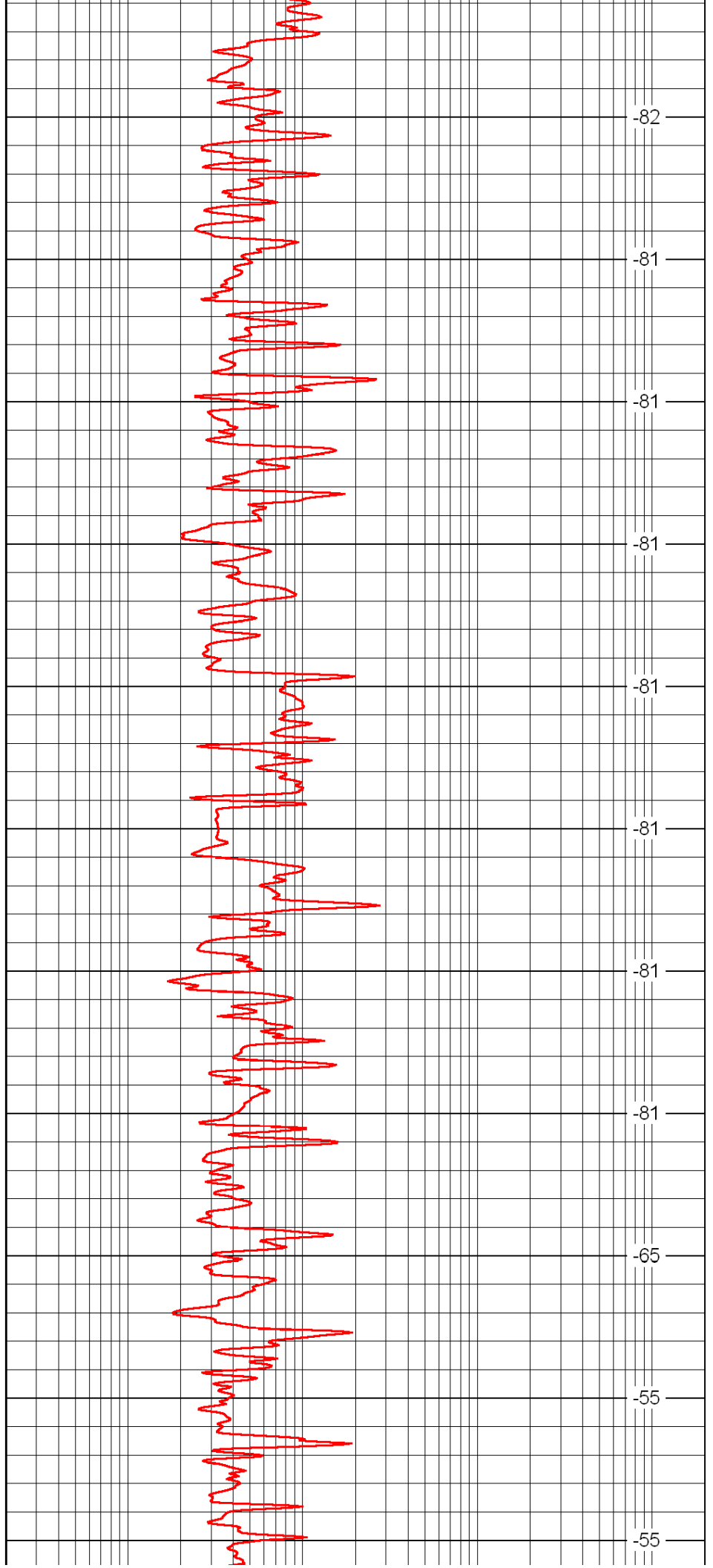
2350

2400

2450

2500

2550



-82

-81

-81

-81

-81

-81

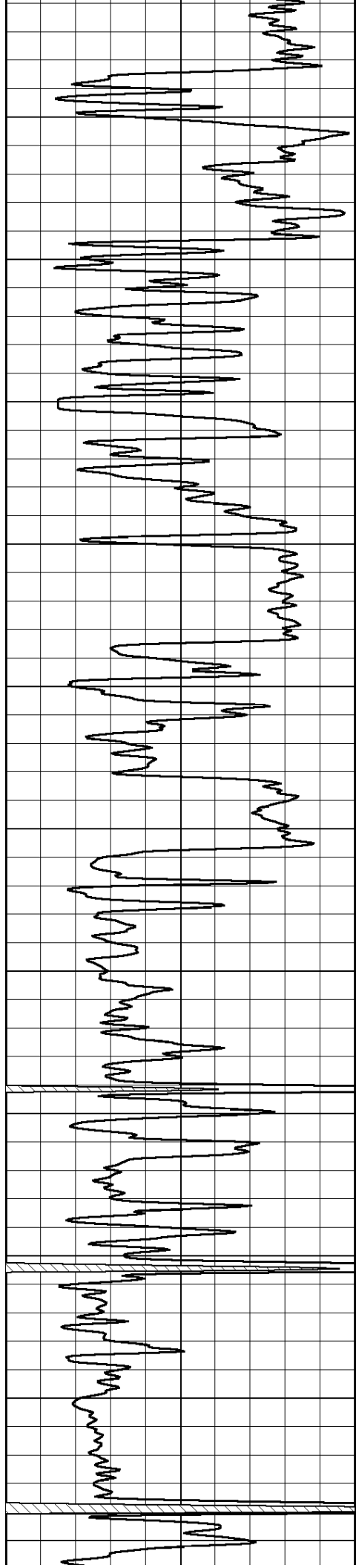
-81

-81

-65

-55

-55



2600

2650

2700

2750

2800

2850

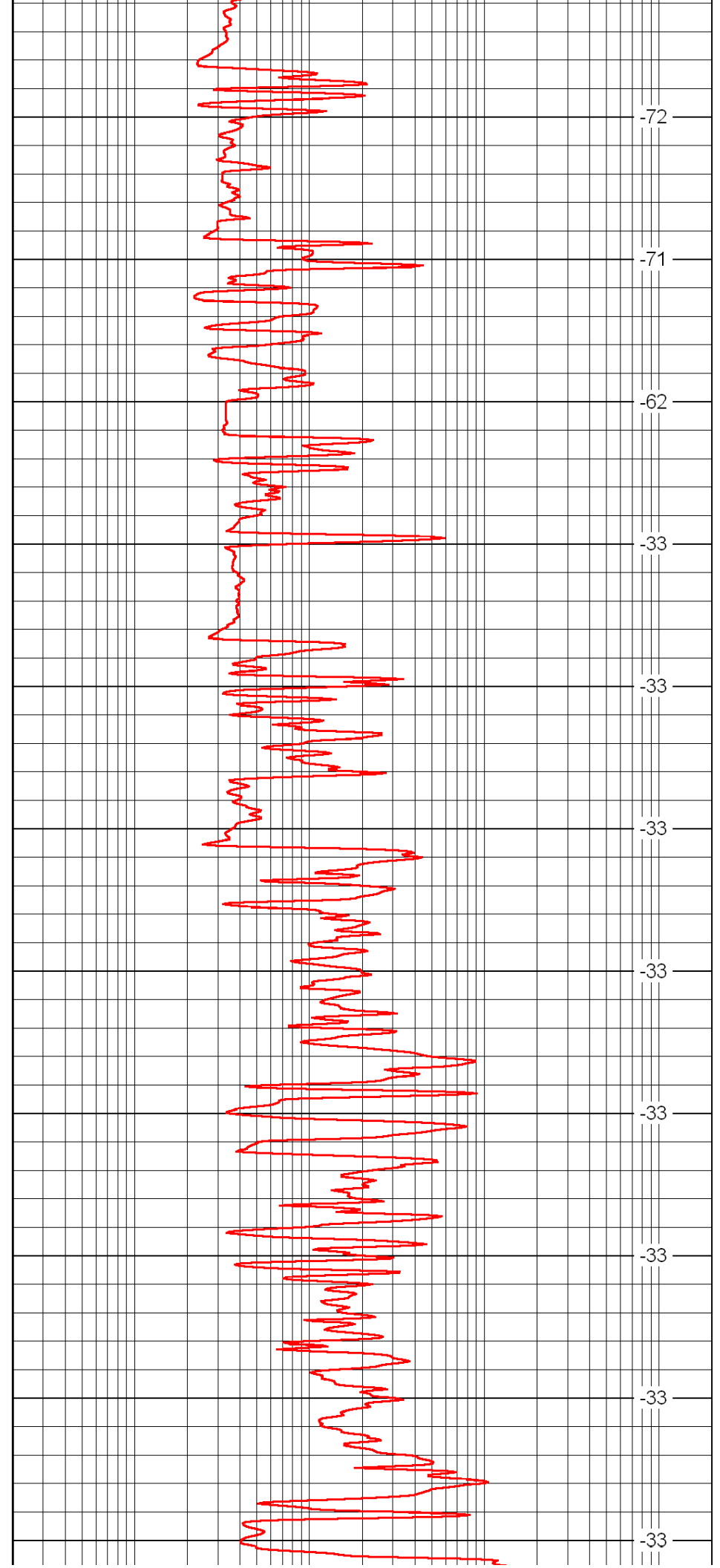
2900

2950

3000

3050

3100



-72

-71

-62

-33

-33

-33

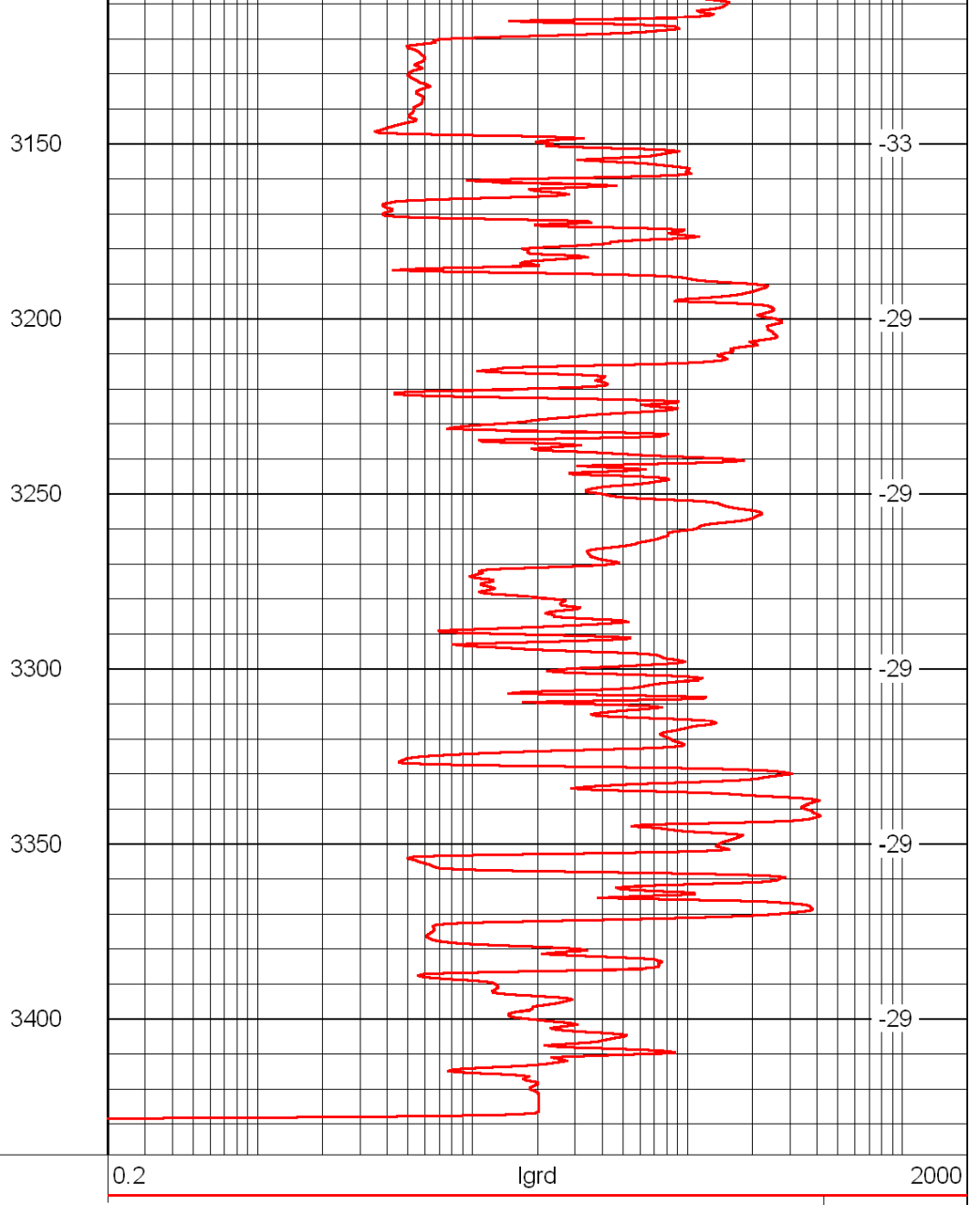
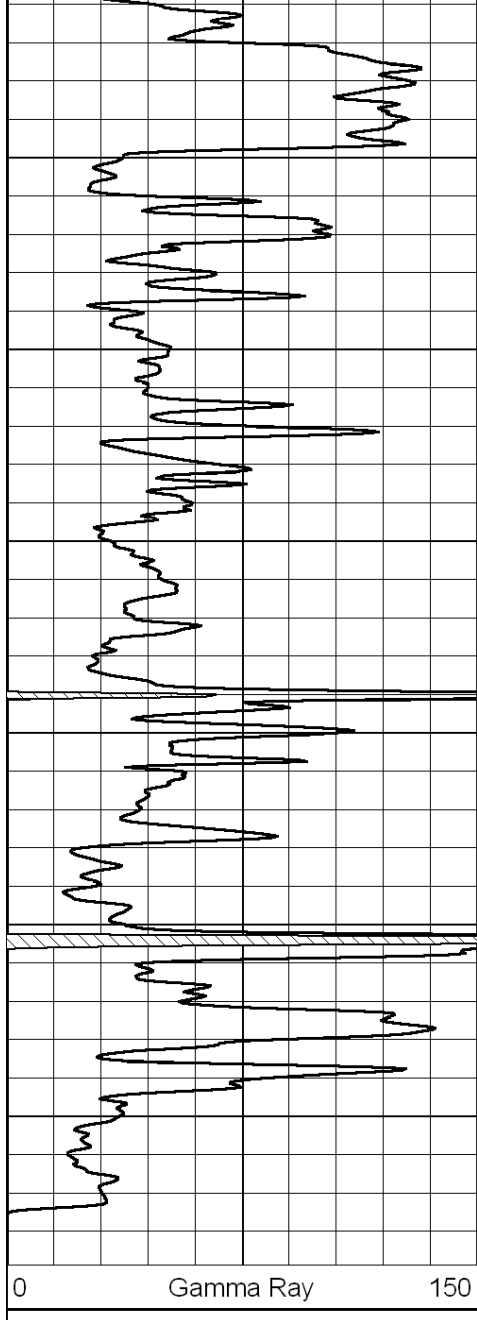
-33

-33

-33

-33

-33



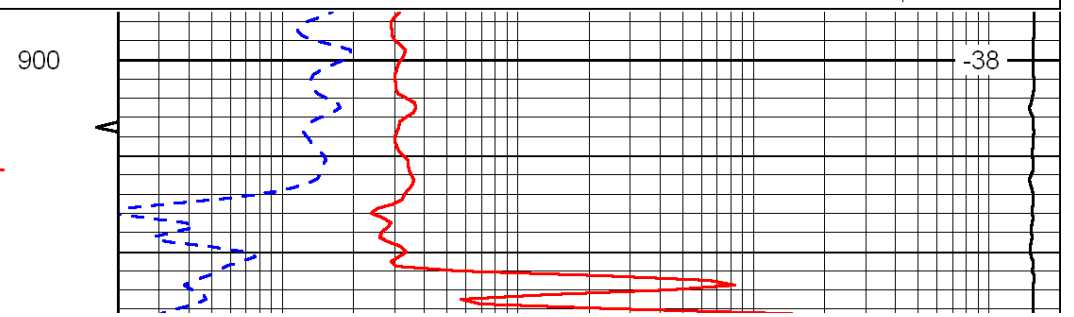
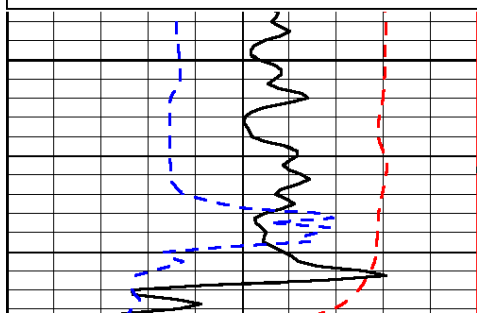
LSPD

Database File: c:\warrior\data\craig oil_nuss b-2\craigoil.db
 Dataset Pathname: rag/crrg
 Presentation Format: rag
 Dataset Creation: Wed Jul 14 12:22:52 2010
 Charted by: Depth in Feet scaled 1:240

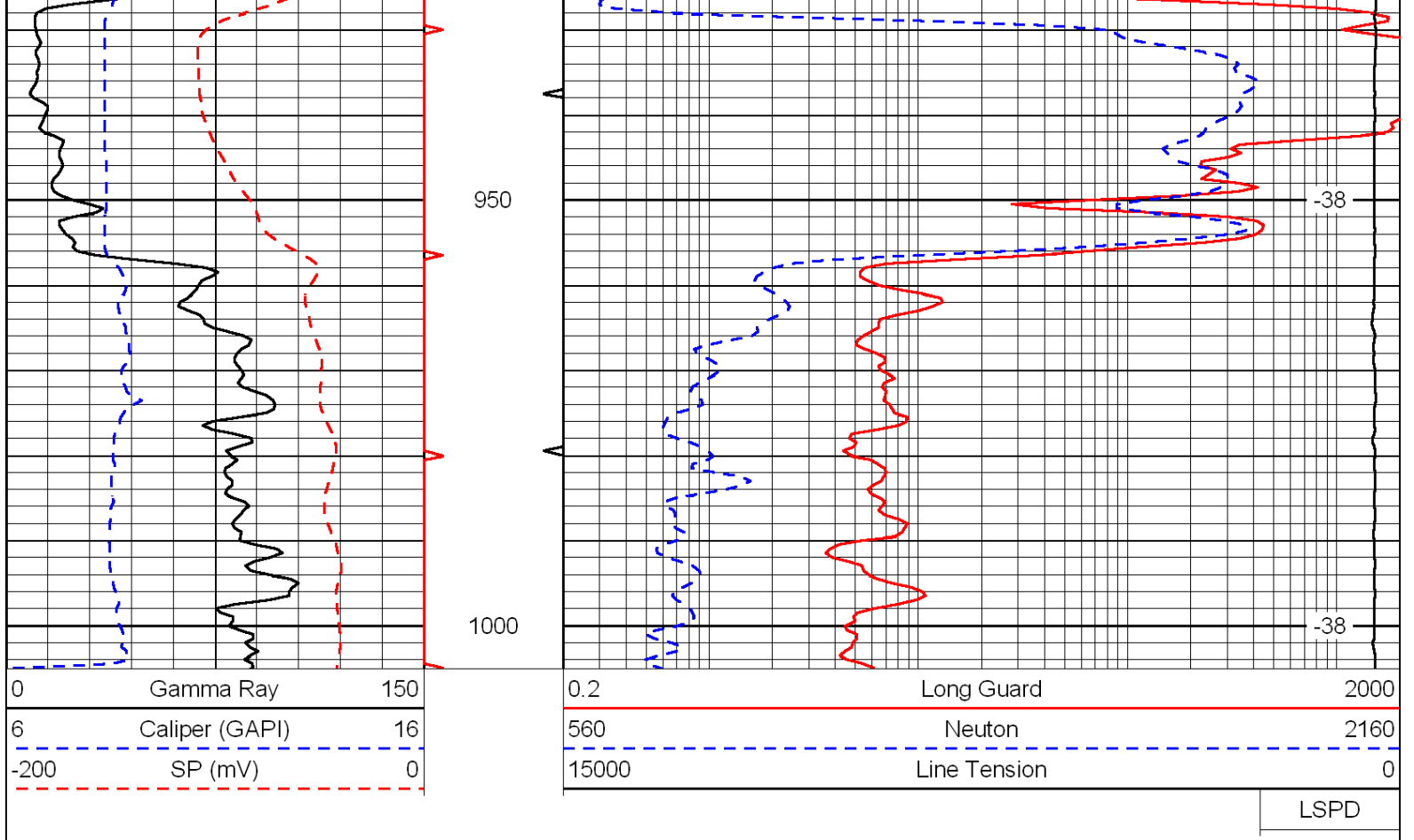
0	Gamma Ray	150
6	Caliper (GAPI)	16
-200	SP (mV)	0

0.2	Long Guard	2000
560	Neuton	2160
15000	Line Tension	0

LSPD



LSPD



Database File: c:\warrior\data\craig oil_nuss b-2\craigoil.db
 Dataset Pathname: rag/crrg
 Presentation Format: rag
 Dataset Creation: Wed Jul 14 12:22:52 2010
 Charted by: Depth in Feet scaled 1:240

