



Microresistivity Log

DIGITAL LOG (785) 625-3858

API No.	15-009-25,447-00-00	
Company	Craig Oil Company	
Well	Nuss B-2	
Field	Nuss	
County	Barton	State
Location	1,100' FNL & 1,370' FEL	
Other Services	RAG	
Sec: 5	Twp: 16S	Rge: 14W
Permanent Datum	Ground Level	Elevation 1934
Log Measured From	Kelly Bushing	7 Ft. Above Perm. Datum
Drilling Measured From	Kelly Bushing	

Date	7/13/2010
Run Number	Two
Depth Driller	3432
Depth Logger	3431
Bottom Logged Interval	3430
Top Log Interval	2800
Casing Driller	8.625 @ 431
Casing Logger	429
Bit Size	7.875
Type Fluid in Hole	Chemical
Salinity, ppm CL	5000
Density / Viscosity	9.4 58
pH / Fluid Loss	10.0 9.6
Source of Sample	Flowline
Rm @ Meas. Temp	.71 @ 78
Rmf @ Meas. Temp	.53 @ 78
Rmc @ Meas. Temp	.96 @ 78
Source of Rmf / Rmc	Charts
Rm @ BHT	.50 @ 110
Operating Rig Time	3 Hours
Max Rec. Temp. F	110
Equipment Number	10
Location	Hays
Recorded By	J. Long
Witnessed By	Francis Whisler

<<< Fold Here >>>

All interpretations are opinions based on inferences from electrical or other measurements and we cannot and do not guarantee the accuracy or correctness of any interpretation, and we shall not, except in the case of gross or willful negligence on our part, be liable or responsible for any loss, costs, damages, or expenses incurred or sustained by anyone resulting from any interpretation made by any of our officers, agents or employees. These interpretations are also subject to our general terms and conditions set out in our current Price Schedule.

Comments

Thank you for using Log-Tech, Inc.
(785) 625-3858

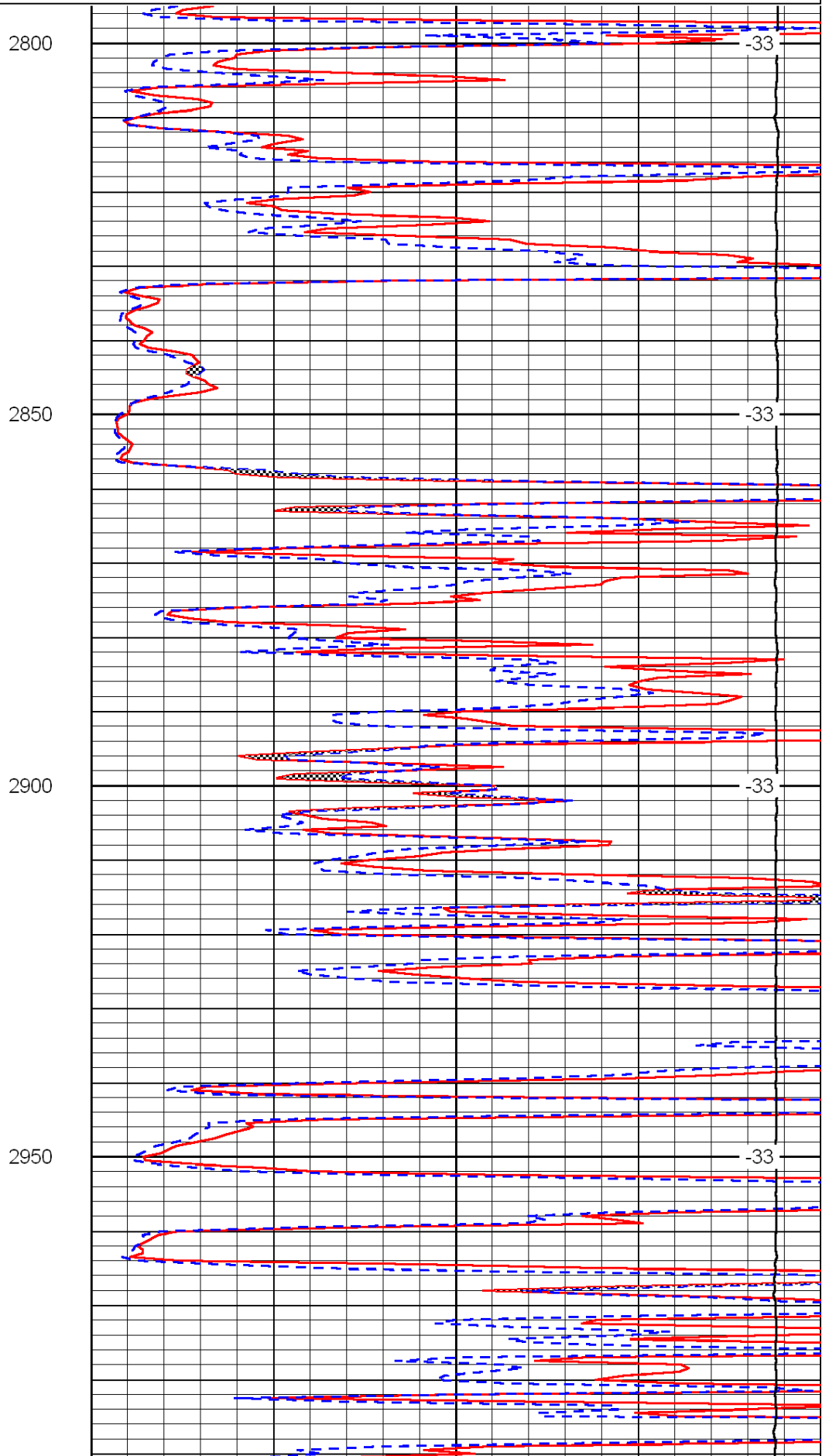
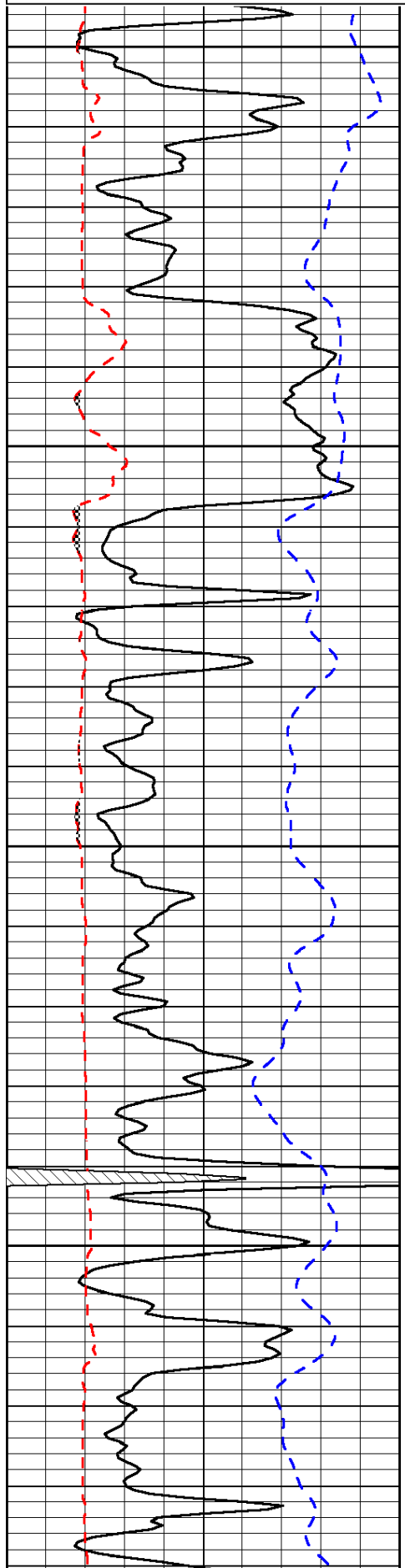
Russell, South to Barton County Line, 1 1/2 West, 1/4 South, West Into

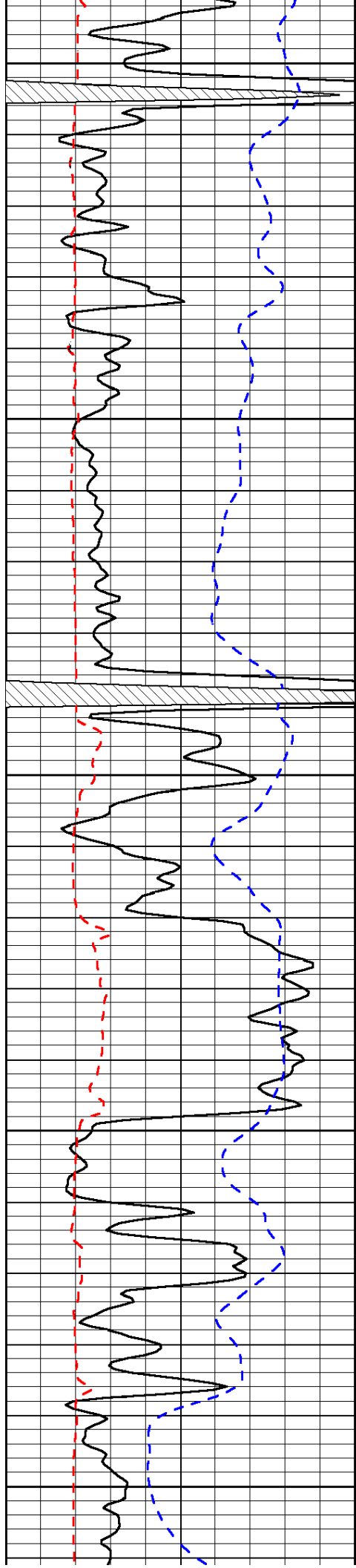
Database File: c:\warrior\data\craig oil_nuss b-2\craigoil.db
 Dataset Pathname: rag/crrg
 Presentation Format: micro
 Dataset Creation: Wed Jul 14 12:22:52 2010
 Charted by: Depth in Feet scaled 1:240

0	Gamma Ray	150
6	Micro Log Caliper (GAPI)	16
-200	SP (mV)	0

0	Micro Inverse 1 X 1	40
0	Micro Normal 2"	40
15000	Line Weight	0

LSPD





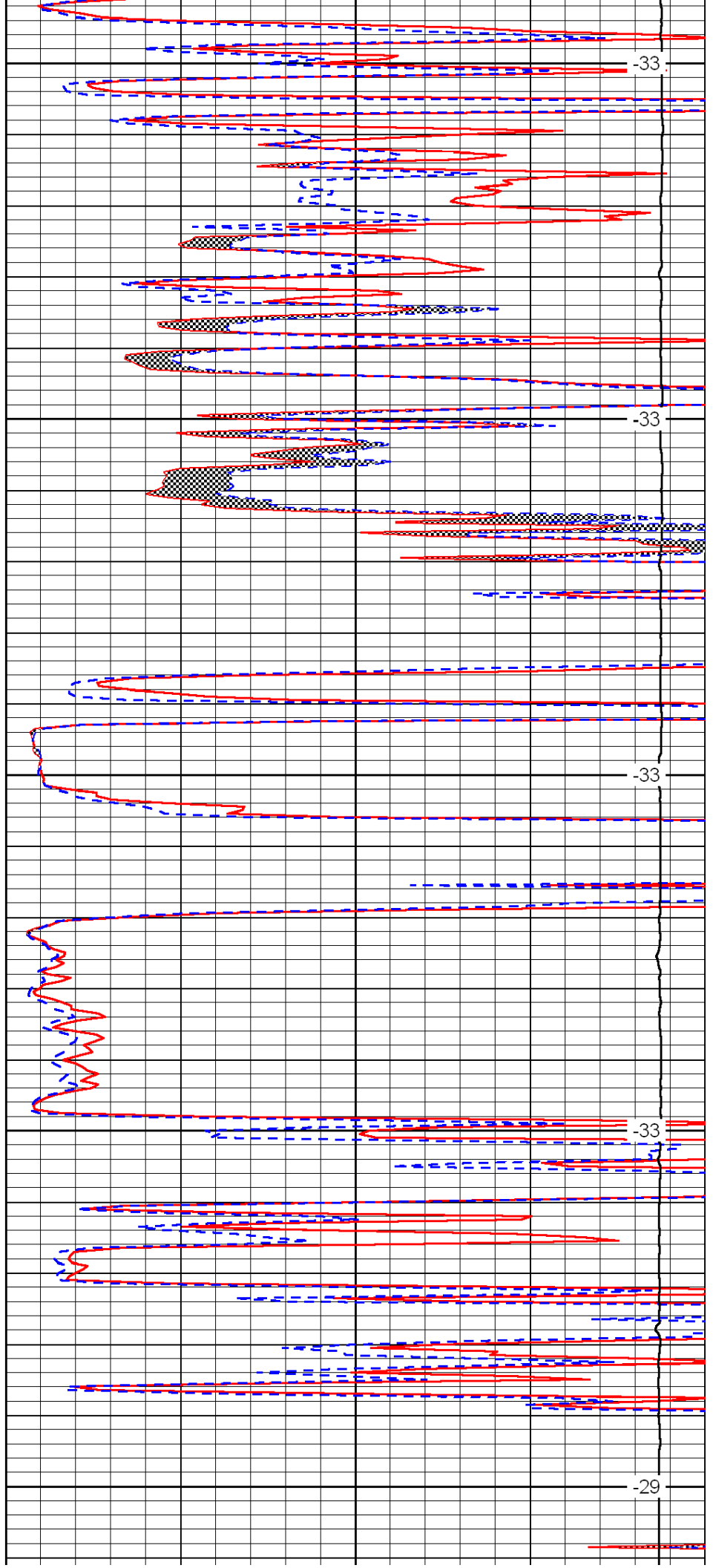
3000

3050

3100

3150

3200



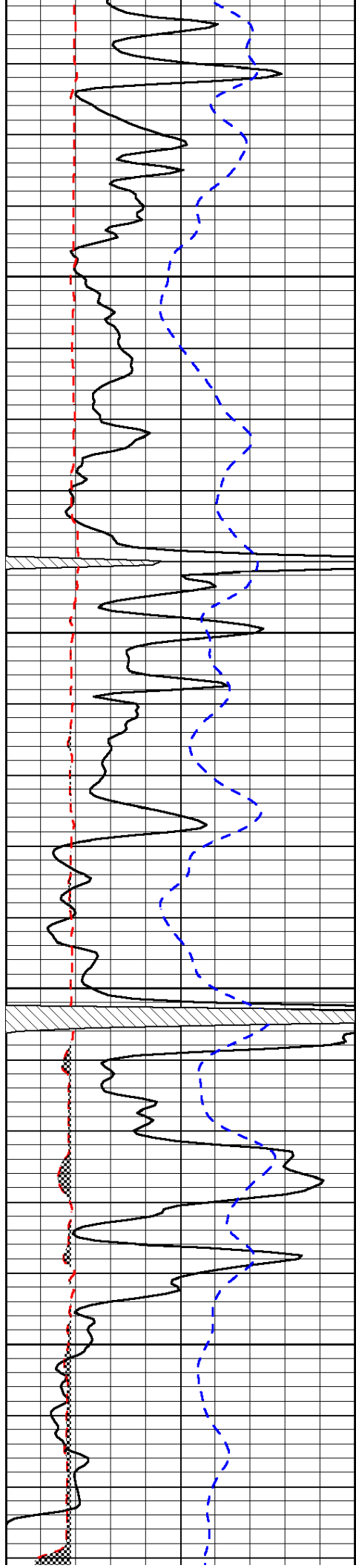
-33

-33

-33

-33

-29

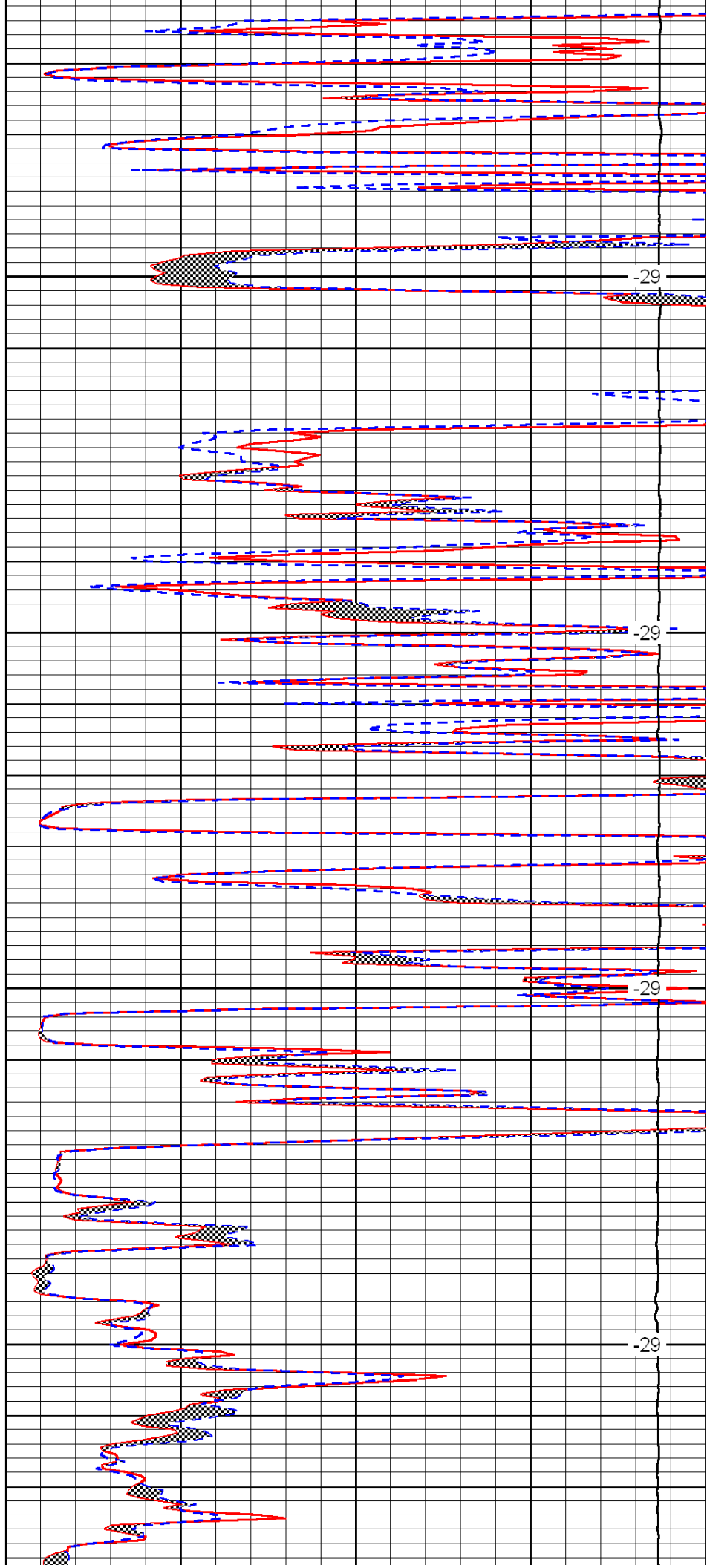


3250

3300

3350

3400

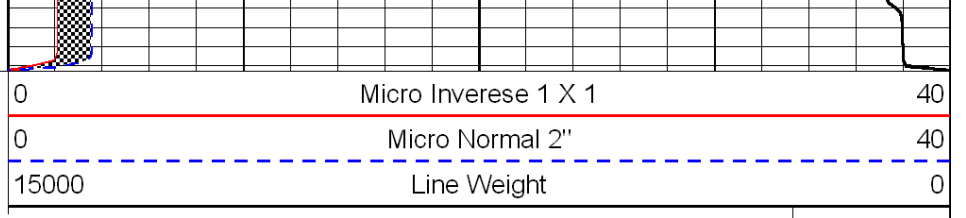
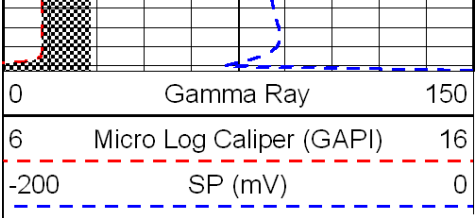


-29

-29

-29

-29



LSPD