



**COMPLETION
& PRODUCTION
SERVICES CO.**

**MICRO
LOG**

Company RUPE OIL COMPANY, INC.
Well WHISLER #1
Field STOLTENBERG
County ELLSWORTH
State KANSAS

Company RUPE OIL COMPANY, INC.
Well WHISLER #1
Field STOLTENBERG
County ELLSWORTH State KANSAS

Location: API # : 15-053-21330-0000
1182' FNL & 1802' FEL
SW - SE - NW - NE
SEC 19 TWP 16S RGE 10W
Permanent Datum GROUND LEVEL Elevation 1885
Log Measured From KELLY BUSHING 13' A.G.L.
Drilling Measured From KELLY BUSHING
Other Services
CDL/CNL
DIL
Elevation
K.B. 1898
D.F. 1896
G.L. 1885

Date	7/31/15
Run Number	TWO
Depth Driller	3460
Depth Logger	3459
Bottom Logged Interval	3457
Top Log Interval	2600
Casing Driller	8 5/8" @ 395'
Casing Logger	394
Bit Size	7 7/8"
Type Fluid in Hole	CHEMICAL MUD
Density / Viscosity	9.2/48
pH / Fluid Loss	9.5/10.4
Source of Sample	FLOWLINE
Rim @ Meas. Temp	.500 @ 80F
Rmf @ Meas. Temp	.375 @ 80F
Rmc @ Meas. Temp	.600 @ 80F
Source of Rmf / Rmc	MEASUREMENT
Rim @ BHT	.360 @ 111F
Time Circulation Stopped	3.5 HOURS
Time Logger on Bottom	2:30 A.M.
Maximum Recorded Temperature	111F
Equipment Number	4854
Location	HAYS, KANSAS
Recorded By	JEFF LUEBBERS
Witnessed By	STEVEN PETERMANN

<<< Fold Here >>>

All interpretations are opinions based on inferences from electrical or other measurements and we cannot and do not guarantee the accuracy or correctness of any interpretation, and we shall not, except in the case of gross or willful negligence on our part, be liable or responsible for any loss, costs, damages, or expenses incurred or sustained by anyone resulting from any interpretation made by any of our officers, agents or employees. These interpretations are also subject to our general terms and conditions set out in our current Price Schedule.

Comments

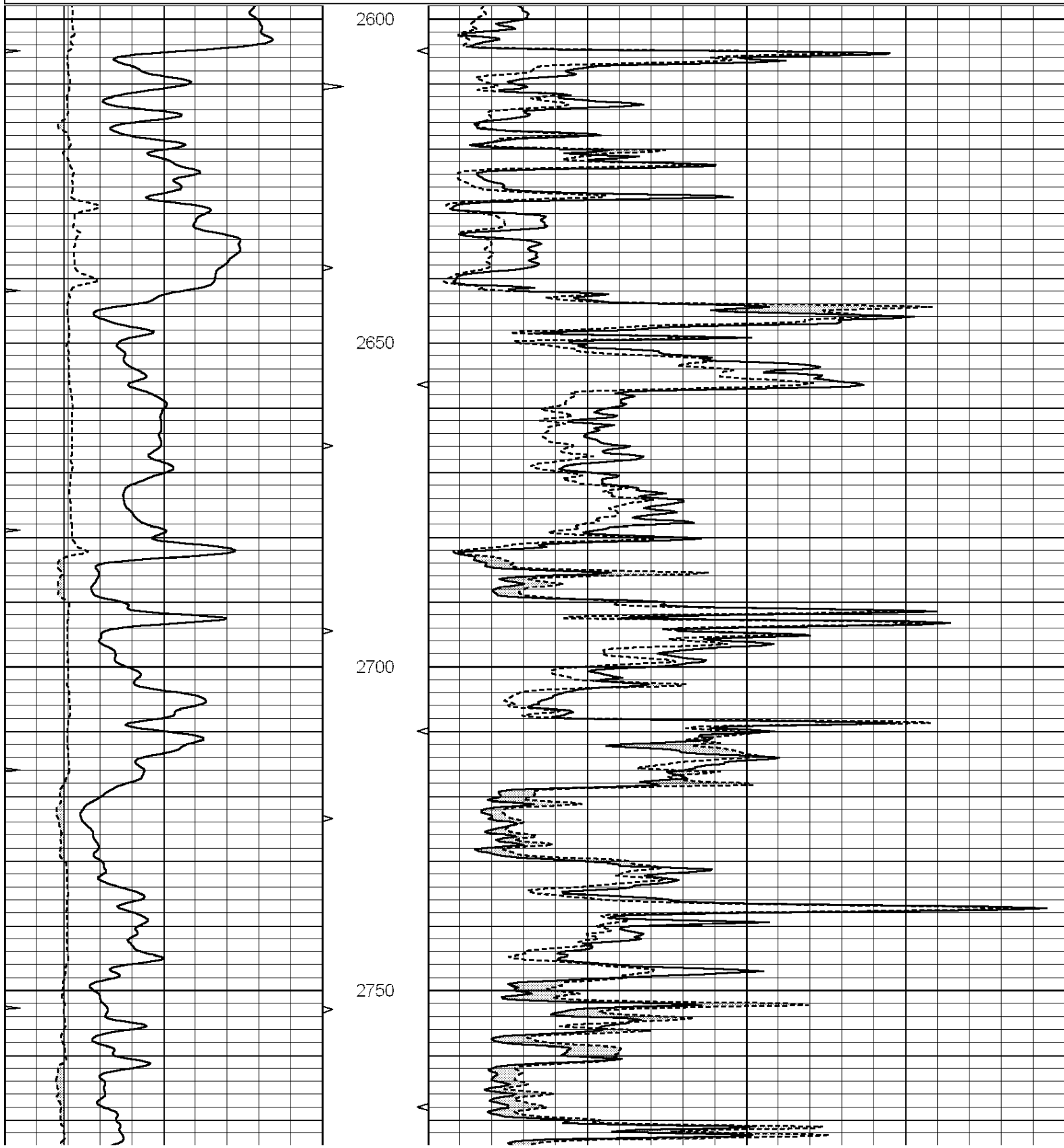
THANK YOU FOR USING "NABORS" HAYS, KANSAS (785) 628-6395
DIRECTIONS
WILSON, KS. & OLD 40. 12S. ON HOLYROOD BLKTOP TO "AVE. P", 1/2E., S. INTO

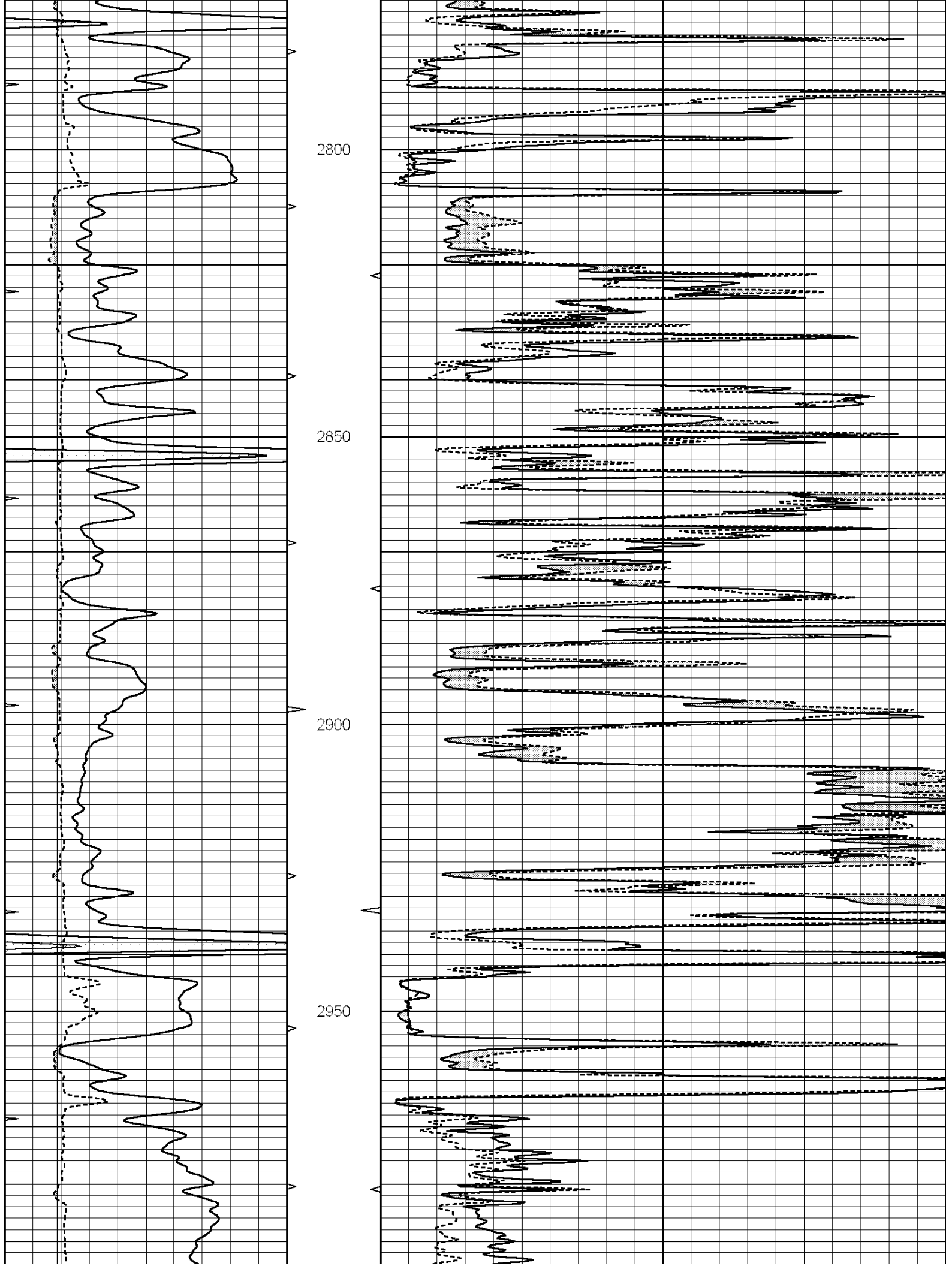


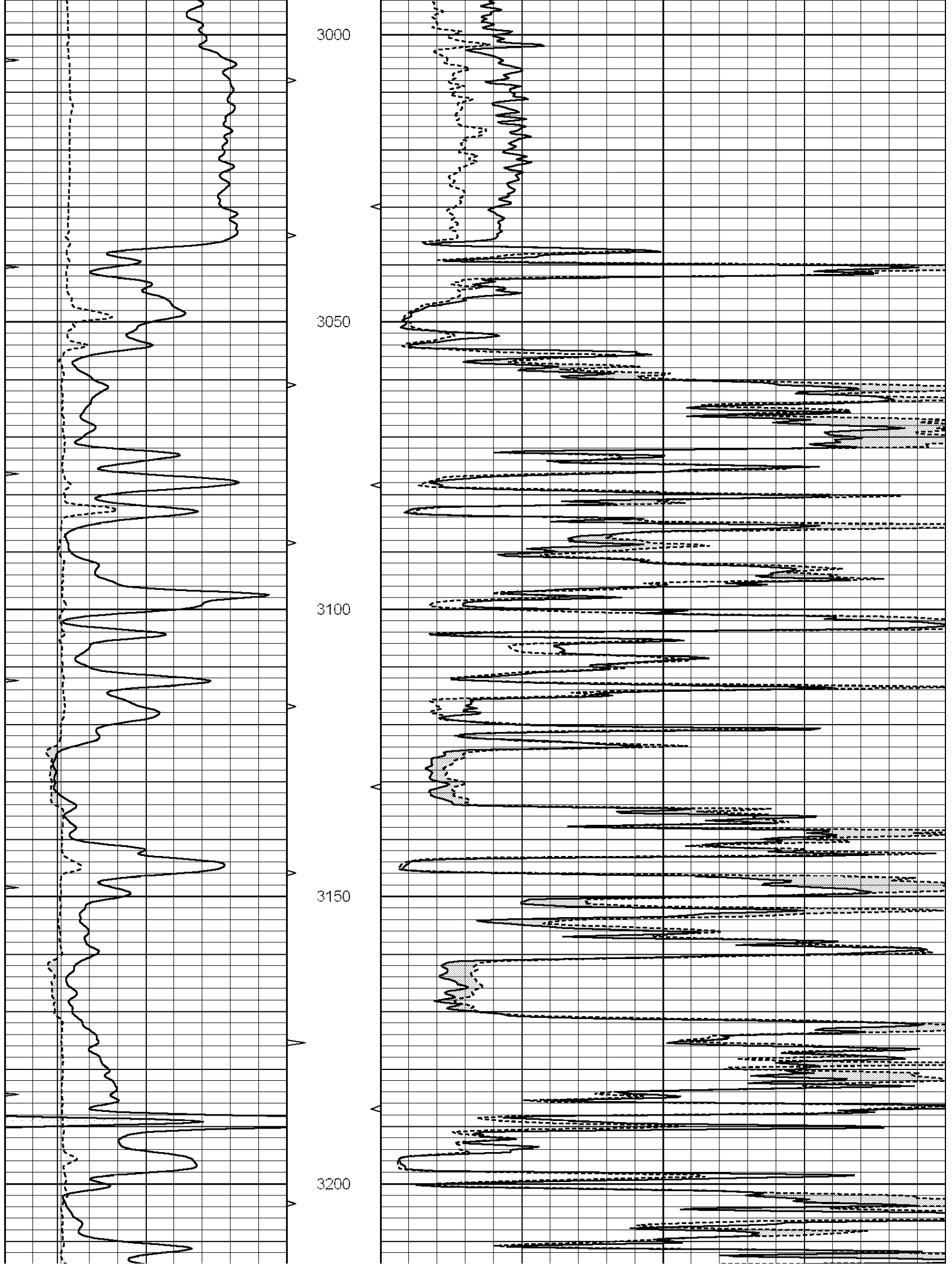
MAIN SECTION

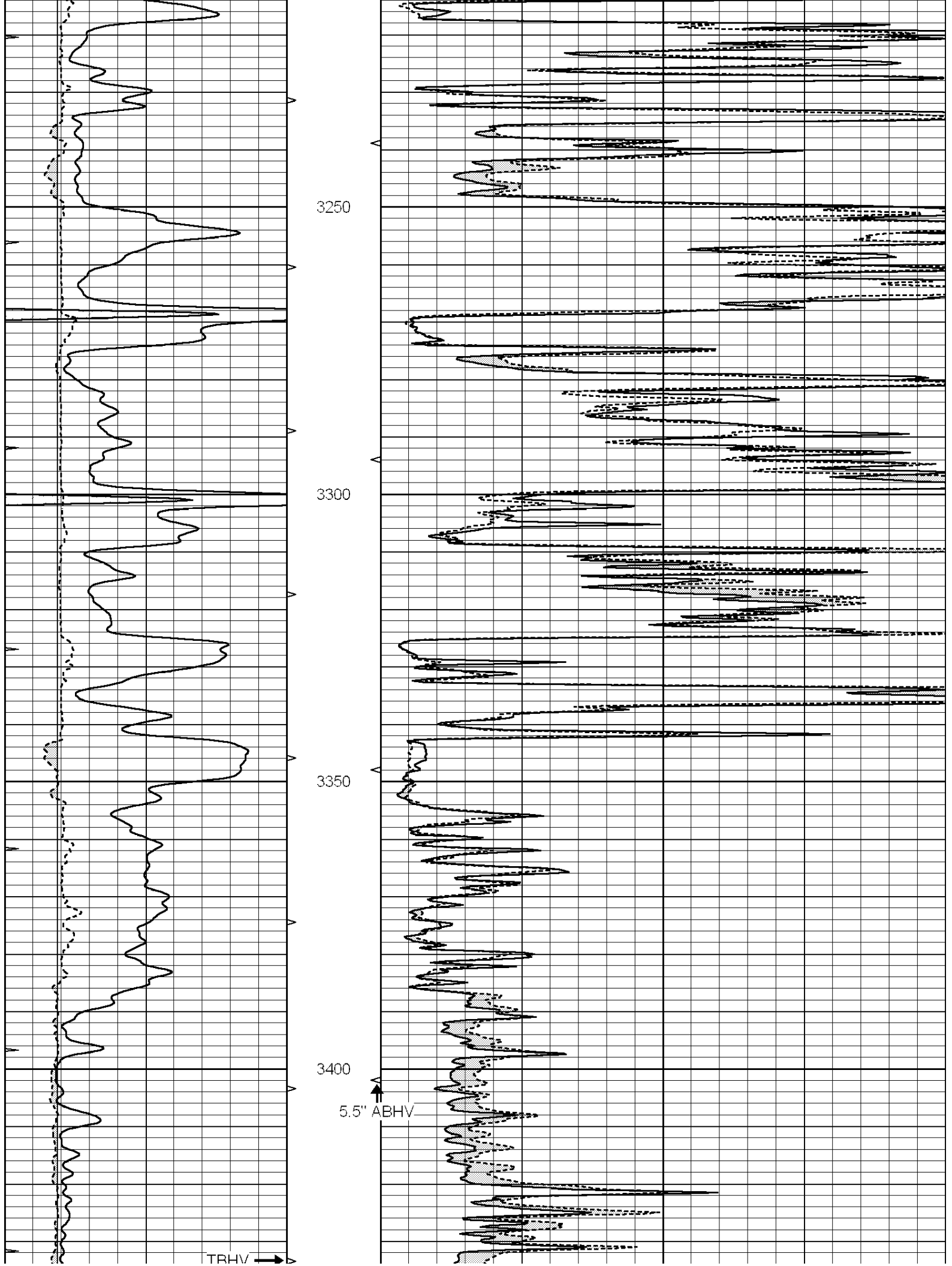
Database File: 26629ddn.db
 Dataset Pathname: pass6.3
 Presentation Format: micro
 Dataset Creation: Fri Jul 31 04:51:55 2015 by Calc SOC 120430
 Charted by: Depth in Feet scaled 1:240

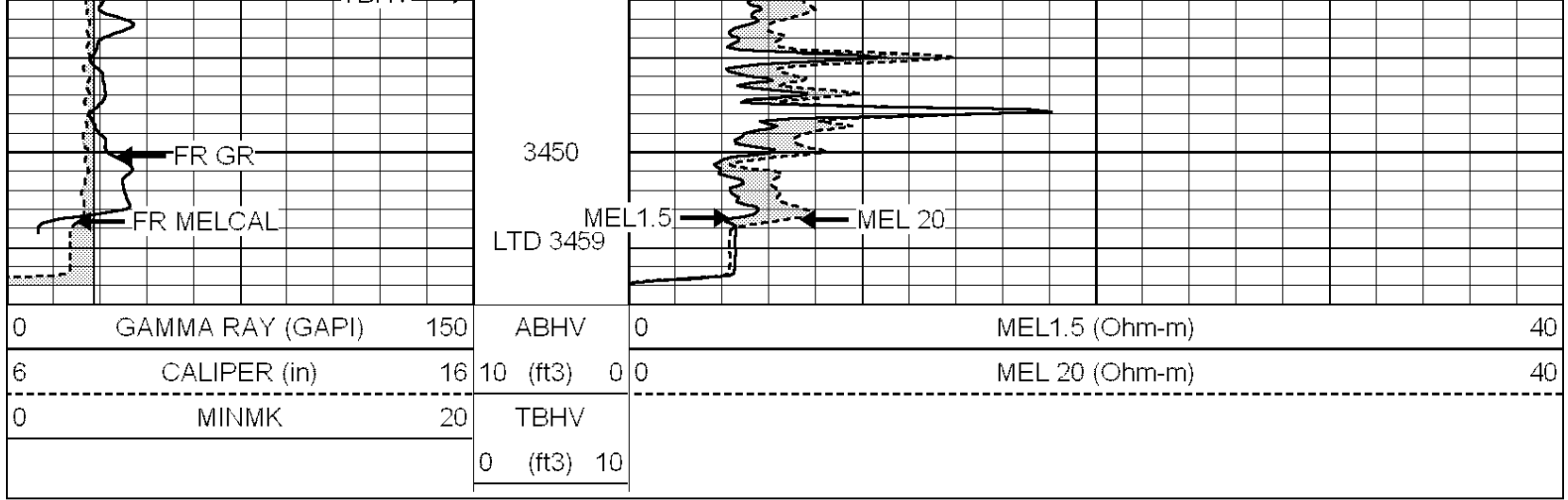
0	GAMMA RAY (GAPI)	150	ABHV	0	MEL1.5 (Ohm-m)	40
6	CALIPER (in)	16	10 (ft3)	0	MEL 20 (Ohm-m)	40
0	MINMK	20	TBHV			
			0 (ft3)	10		







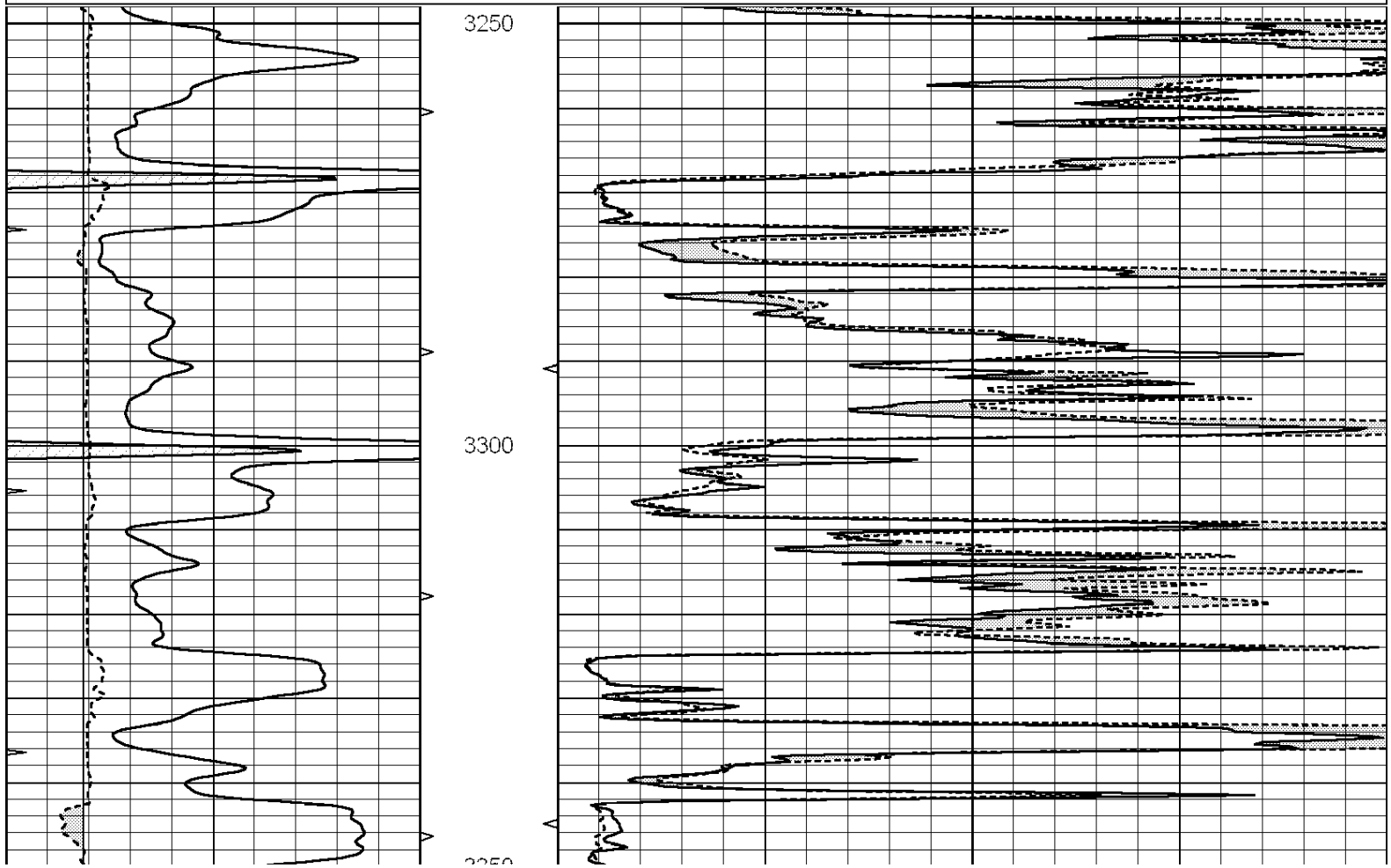


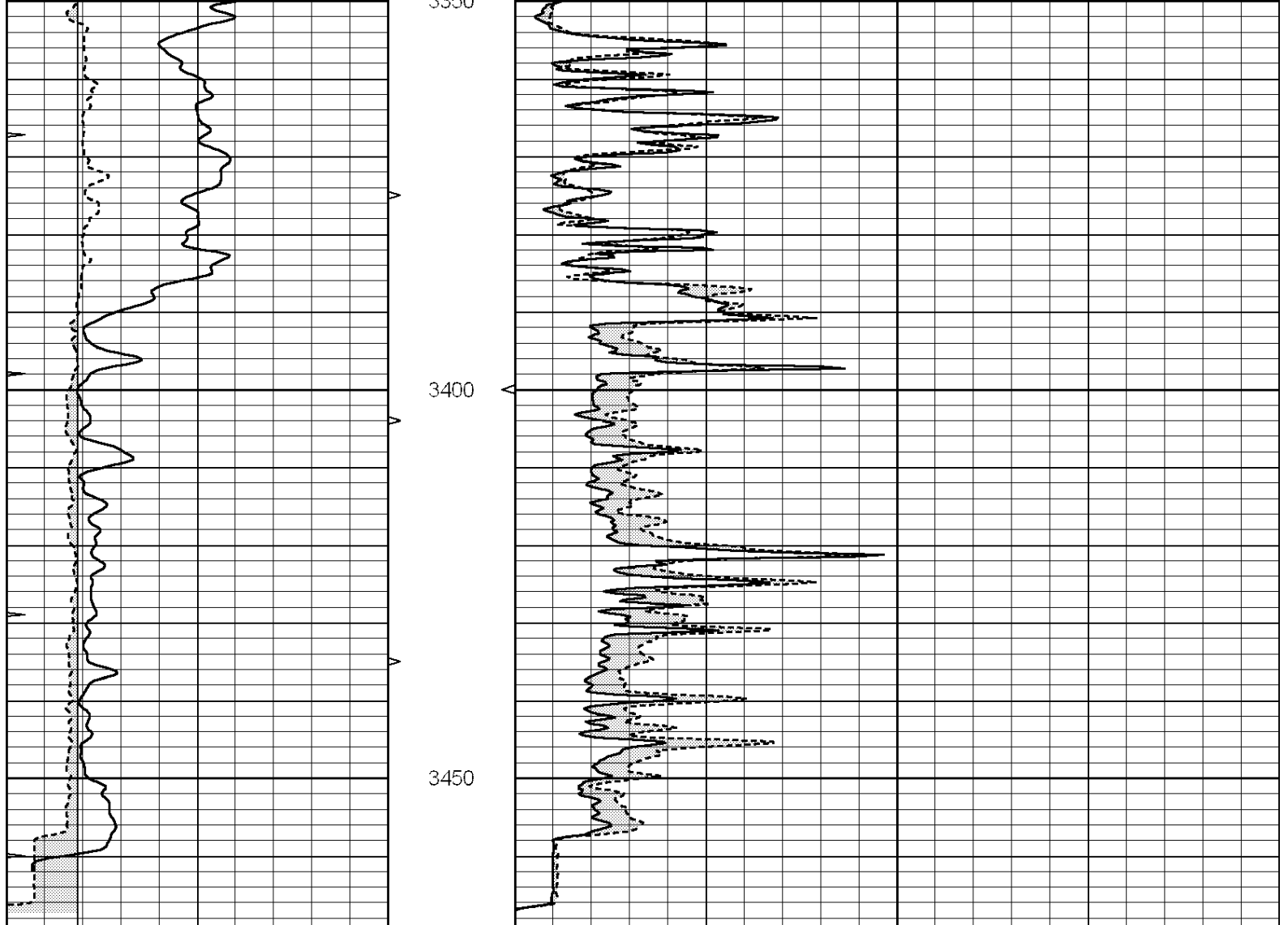


REPEAT SECTION

Database File: 26629ddn.db
 Dataset Pathname: pass5.4
 Presentation Format: micro
 Dataset Creation: Fri Jul 31 04:22:50 2015 by Calc SOC 120430
 Charted by: Depth in Feet scaled 1:240

0	GAMMA RAY (GAPI)	150	ABHV	0	MEL1.5 (Ohm-m)	40
6	CALIPER (in)	16	10 (ft3)	0	MEL 20 (Ohm-m)	40
0	MINMK	20	TBHV			
			0 (ft3)	10		





0	GAMMA RAY (GAPI)	150	ABHV	0	MEL1.5 (Ohm-m)	40
6	CALIPER (in)	16	10 (ft3)	0	MEL 20 (Ohm-m)	40
0	MINMK	20	TBHV			
			0 (ft3)	10		

Calibration Report		
Database File:	26629ddn.db	
Dataset Pathname:	pass6.3	
Dataset Creation:	Fri Jul 31 04:51:55 2015 by Calc SOC 120430	
MICRO Calibration Report		
Serial Number:	070910	
Tool Model:	ProbeN	
Performed:	Fri Jul 31 04:23:24 2015	
Caliper Calibration:	Gain=4.459	Offset=0.833
References	Low Cal	High Cal
Readings	7.400	15.000
	1.473	3.178
1.5" Calibration:	Gain=35.000	Offset=-0.200
References	Low Cal	High Cal
Readings	0.000	20.000
	0.000	1.216

2" Calibration:

Gain=42.000

Offset=-0.500

References

Low Cal

High Cal

Readings

0.000

20.000

0.002

1.053

Gamma Ray Calibration Report

Serial Number:

070559

Tool Model:

OPEN_GR

Performed:

Fri Jul 31 03:58:27 2015

Calibrator Value:

1.0

GAPI

Background Reading:

0.0

cps

Calibrator Reading:

1.0

cps

Sensitivity:

0.2000

GAPI/cps