



**COMPLETION
& PRODUCTION
SERVICES CO.**

**DUAL INDUCTION
LOG**

Company RUPE OIL COMPANY, INC.
Well WHISLER #1
Field STOLTENBERG
County ELLSWORTH
State KANSAS

Company RUPE OIL COMPANY, INC.
Well WHISLER #1
Field STOLTENBERG
County ELLSWORTH State KANSAS

Location: API # : 15-053-21330-0000
1182' FNL & 1802' FEL
SW - SE - NW - NE
SEC 19 TWP 16S RGE 10W
Permanent Datum GROUND LEVEL Elevation 1885
Log Measured From KELLY BUSHING 13' A.G.L.
Drilling Measured From KELLY BUSHING
Other Services
CDL/CNL
MEL
Elevation
K.B. 1898
D.F. 1896
G.L. 1885

Date	7/31/15		
Run Number	ONE		
Depth Driller	3460		
Depth Logger	3459		
Bottom Logged Interval	3457		
Top Log Interval	00		
Casing Driller	8 5/8" @ 395'		
Casing Logger	394		
Bit Size	7 7/8"		
Type Fluid in Hole	CHEMICAL MUD	CHLORIDES 7,600 PPM	
Density / Viscosity	9.2/48		
pH / Fluid Loss	9.5/10.4		
Source of Sample	FLOWLINE		
Rim @ Meas. Temp	.500 @ 80F		
Rmf @ Meas. Temp	.375 @ 80F		
Rmc @ Meas. Temp	.600 @ 80F		
Source of Rmf / Rmc	MEASUREMENT		
Rim @ BHT	.360 @ 111F		
Time Circulation Stopped	2 HOURS		
Time Logger on Bottom	2:30 A.M.		
Maximum Recorded Temperature	111F		
Equipment Number	4854		
Location	HAYS, KANSAS		
Recorded By	JEFF LUEBBERS		
Witnessed By	STEVEN PETERMANN		

<<< Fold Here >>>

All interpretations are opinions based on inferences from electrical or other measurements and we cannot and do not guarantee the accuracy or correctness of any interpretation, and we shall not, except in the case of gross or willful negligence on our part, be liable or responsible for any loss, costs, damages, or expenses incurred or sustained by anyone resulting from any interpretation made by any of our officers, agents or employees. These interpretations are also subject to our general terms and conditions set out in our current Price Schedule.

Comments

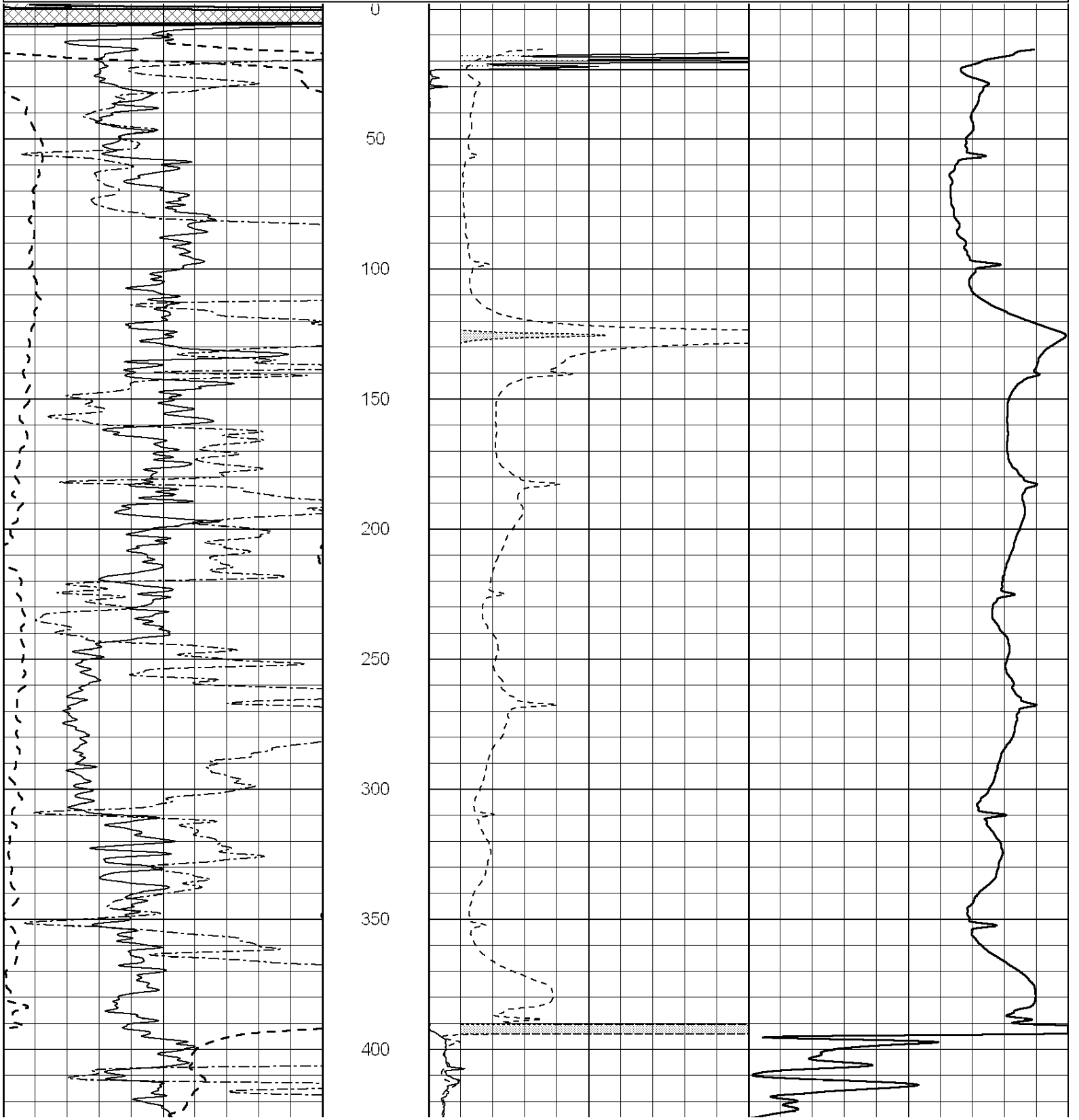
THANK YOU FOR USING "NABORS" HAYS, KANSAS (785) 628-6395
DIRECTIONS
WILSON, KS. & OLD 40. 12S. ON HOLYROOD BLKTOP TO "AVE. P", 1/2E., S. INTO

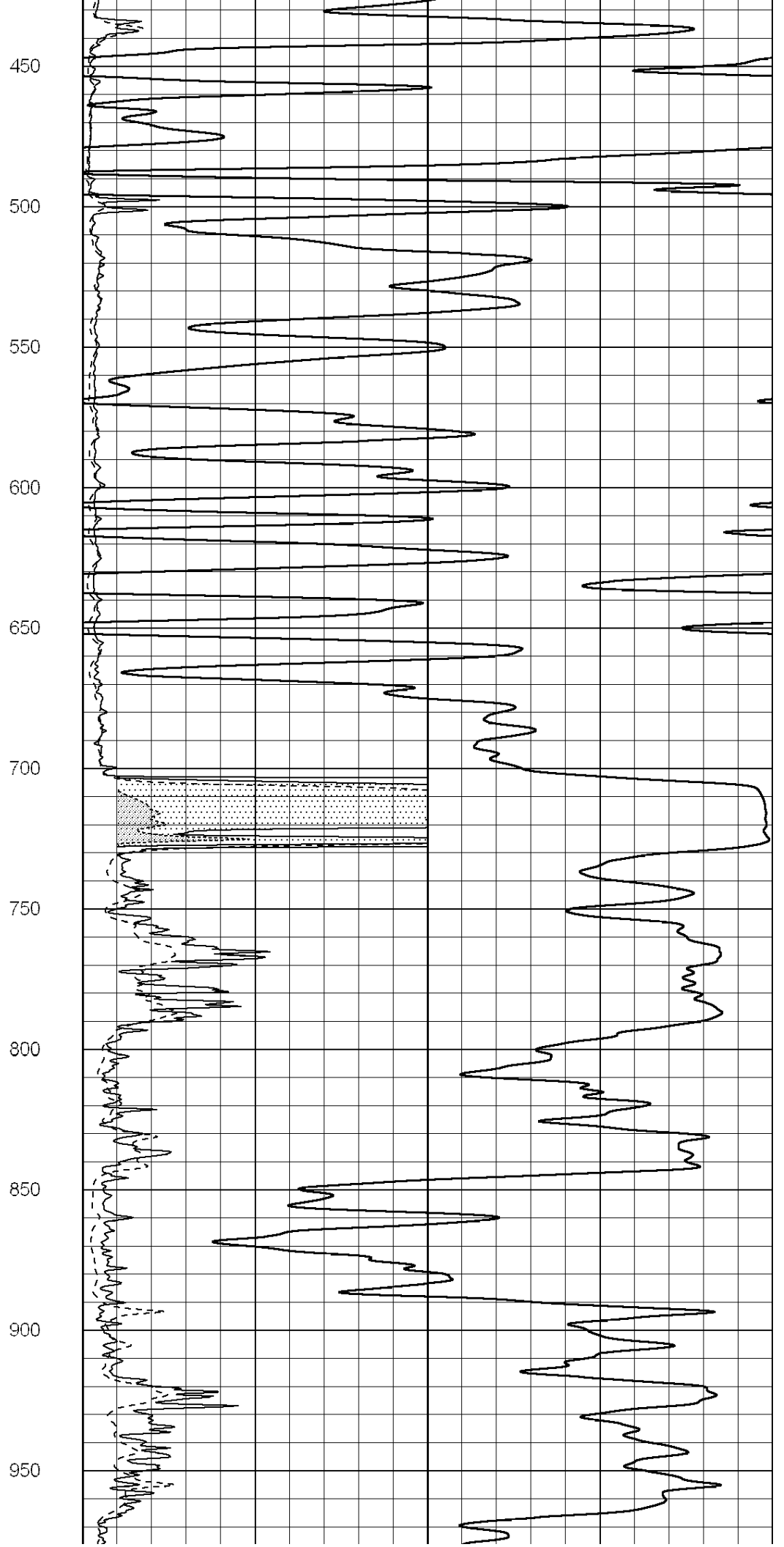
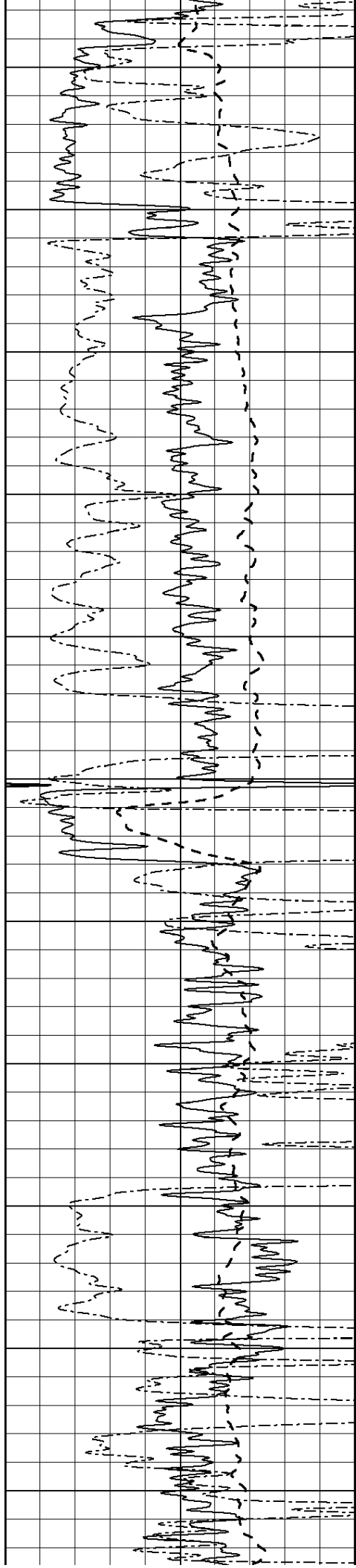


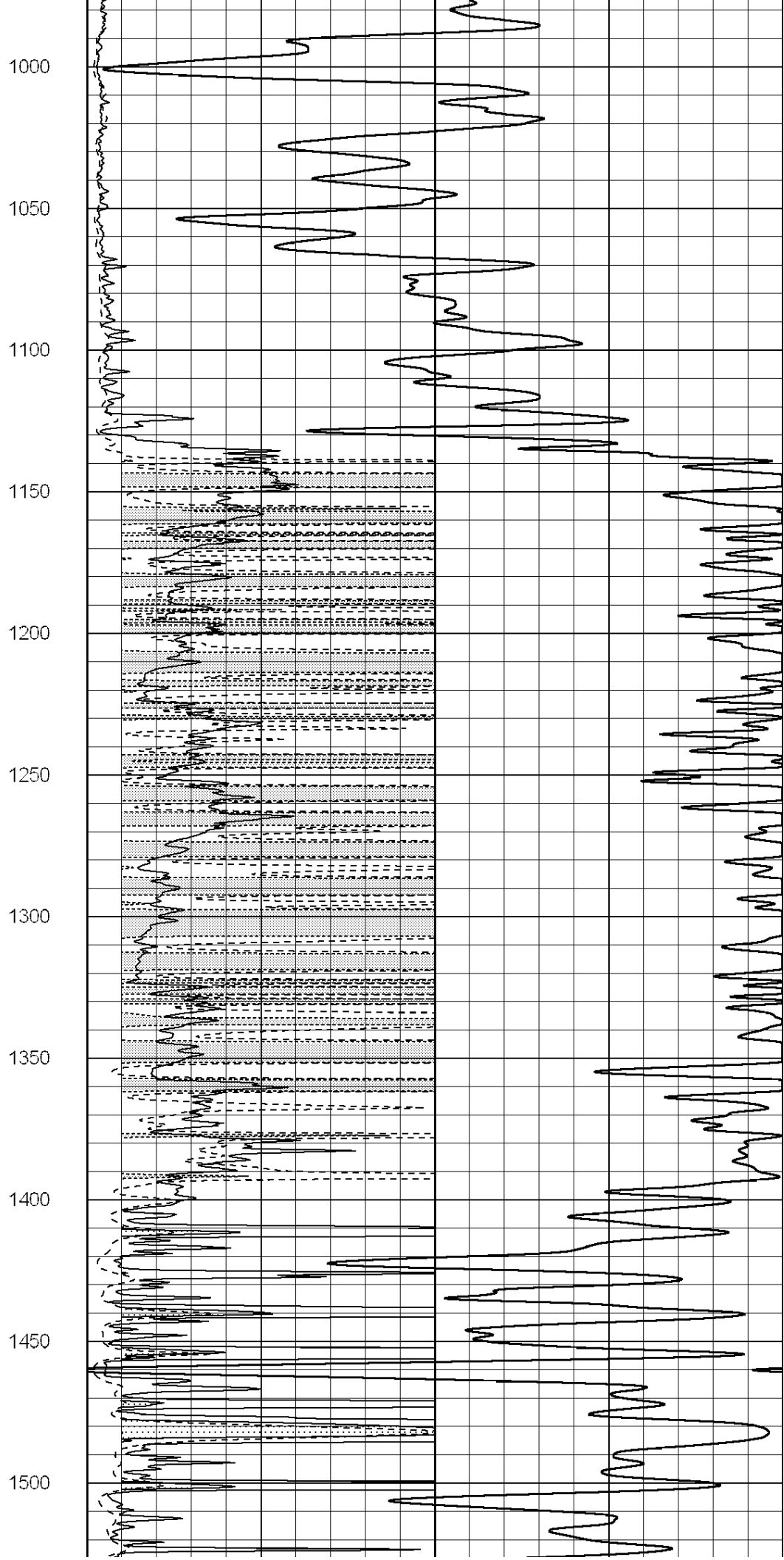
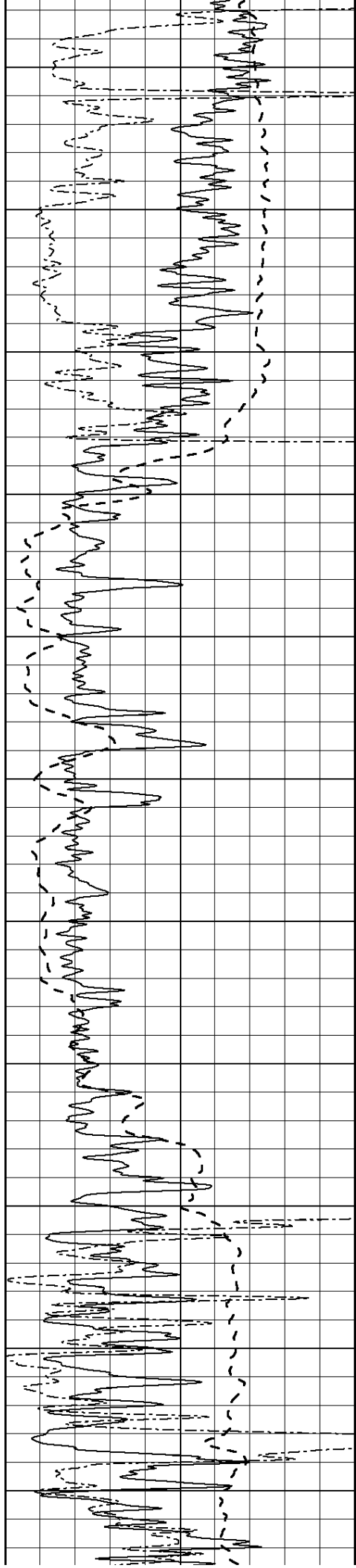
MAIN SECTION

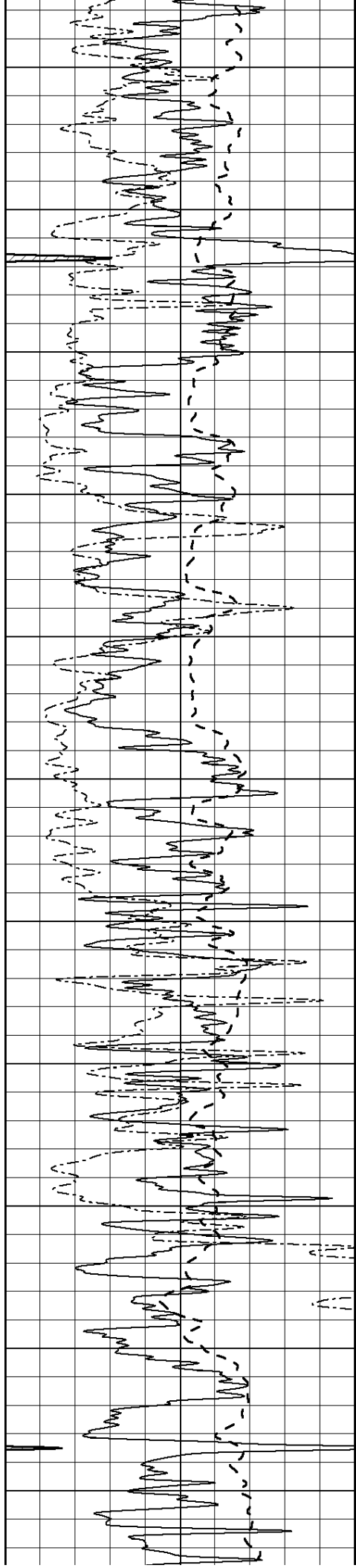
Database File: 26629ddn.db
 Dataset Pathname: pass3.8
 Presentation Format: dil2
 Dataset Creation: Fri Jul 31 03:44:14 2015 by Calc SOC 120430
 Charted by: Depth in Feet scaled 1:600

0	Gamma Ray (GAPI)	150	0	RLL3 (Ohm-m)	50
-100	SP (mV)	100	0	RILD (Ohm-m)	50
0	RWA (Ohm-m)	1	1000	CILD (mmho/m)	
			50	RILD X10 (Ohm-m)	500
			50	RLL3 X10 (Ohm-m)	500









1550

1600

1650

1700

1750

1800

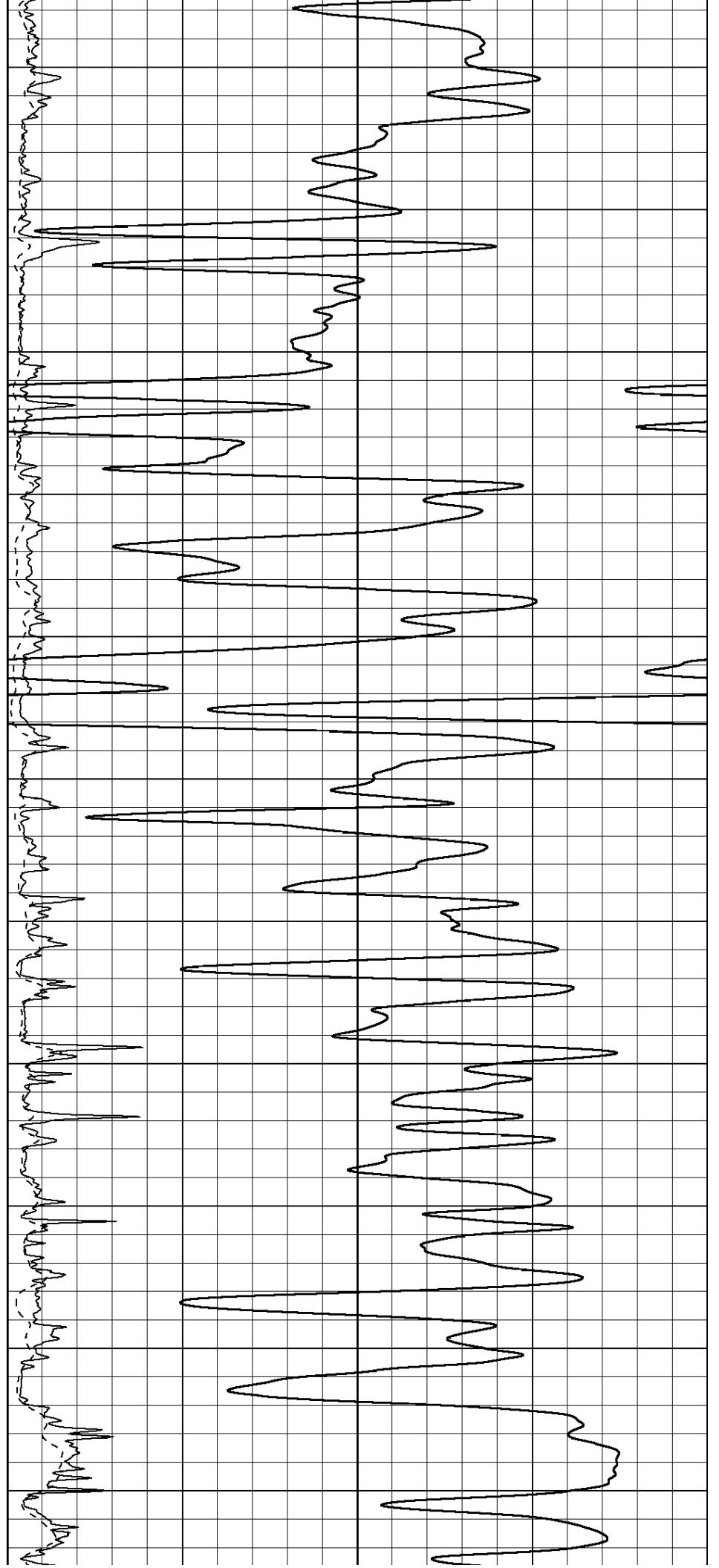
1850

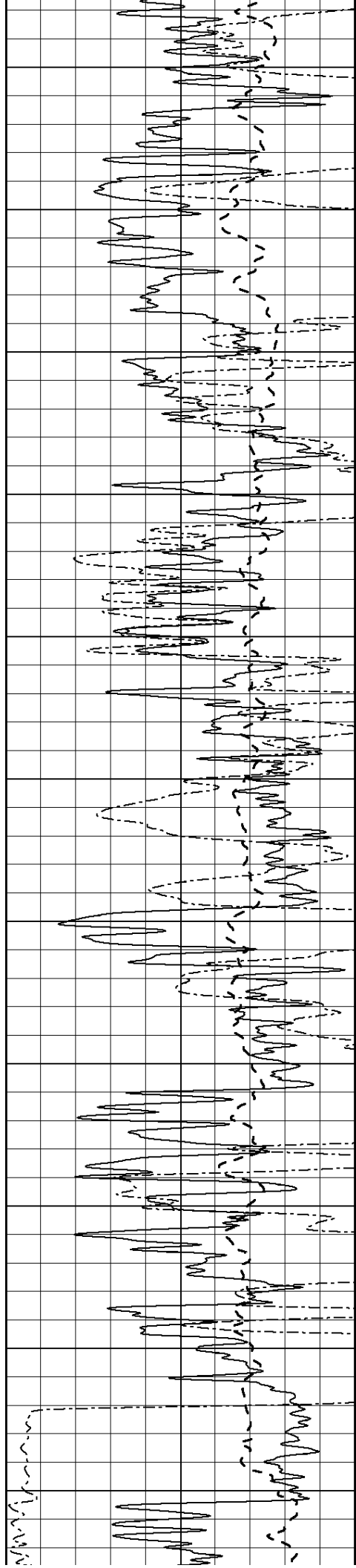
1900

1950

2000

2050





2100

2150

2200

2250

2300

2350

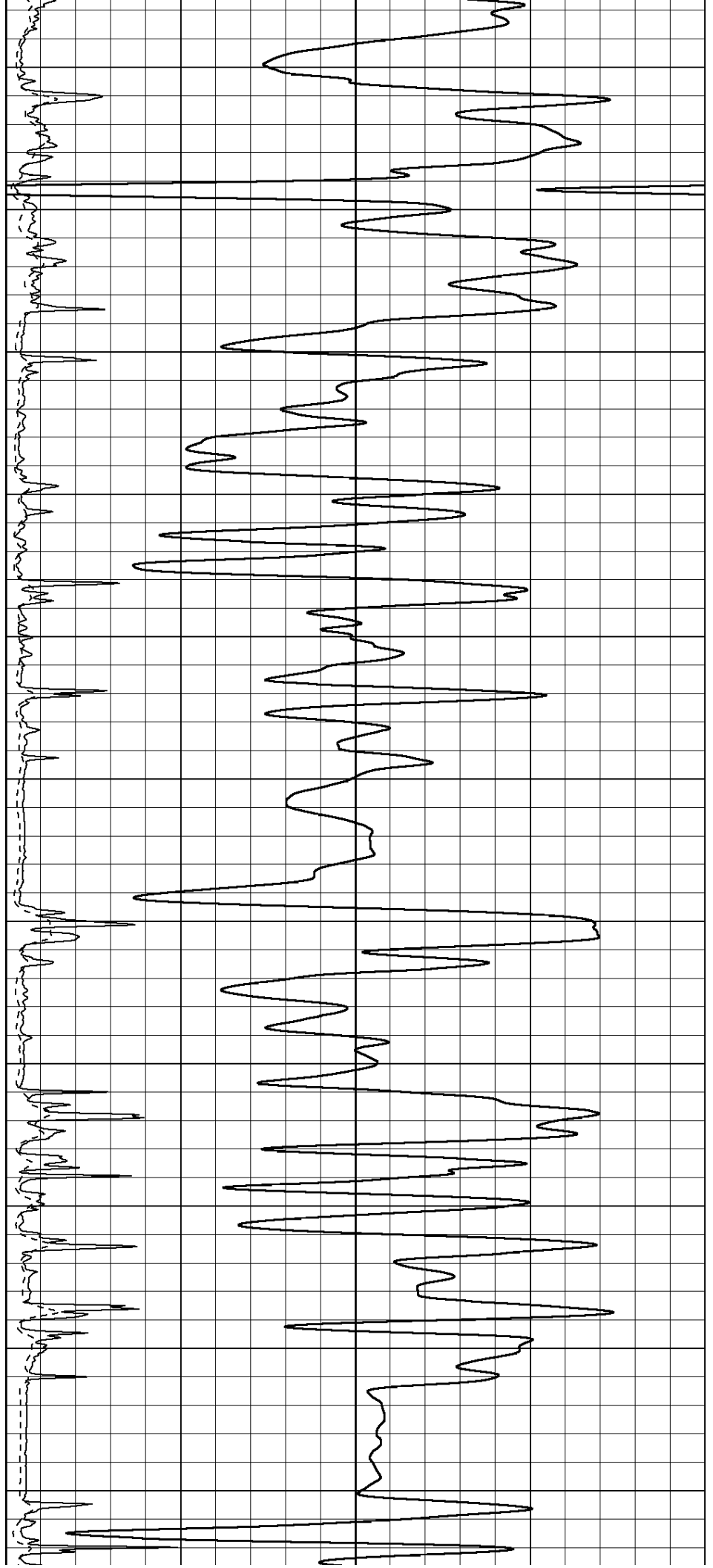
2400

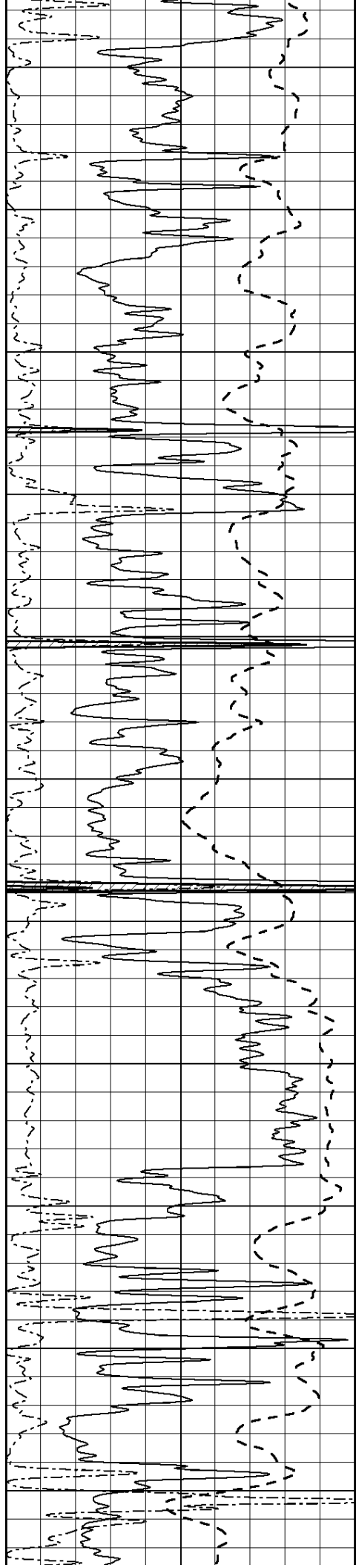
2450

2500

2550

2600





2650

2700

2750

2800

2850

2900

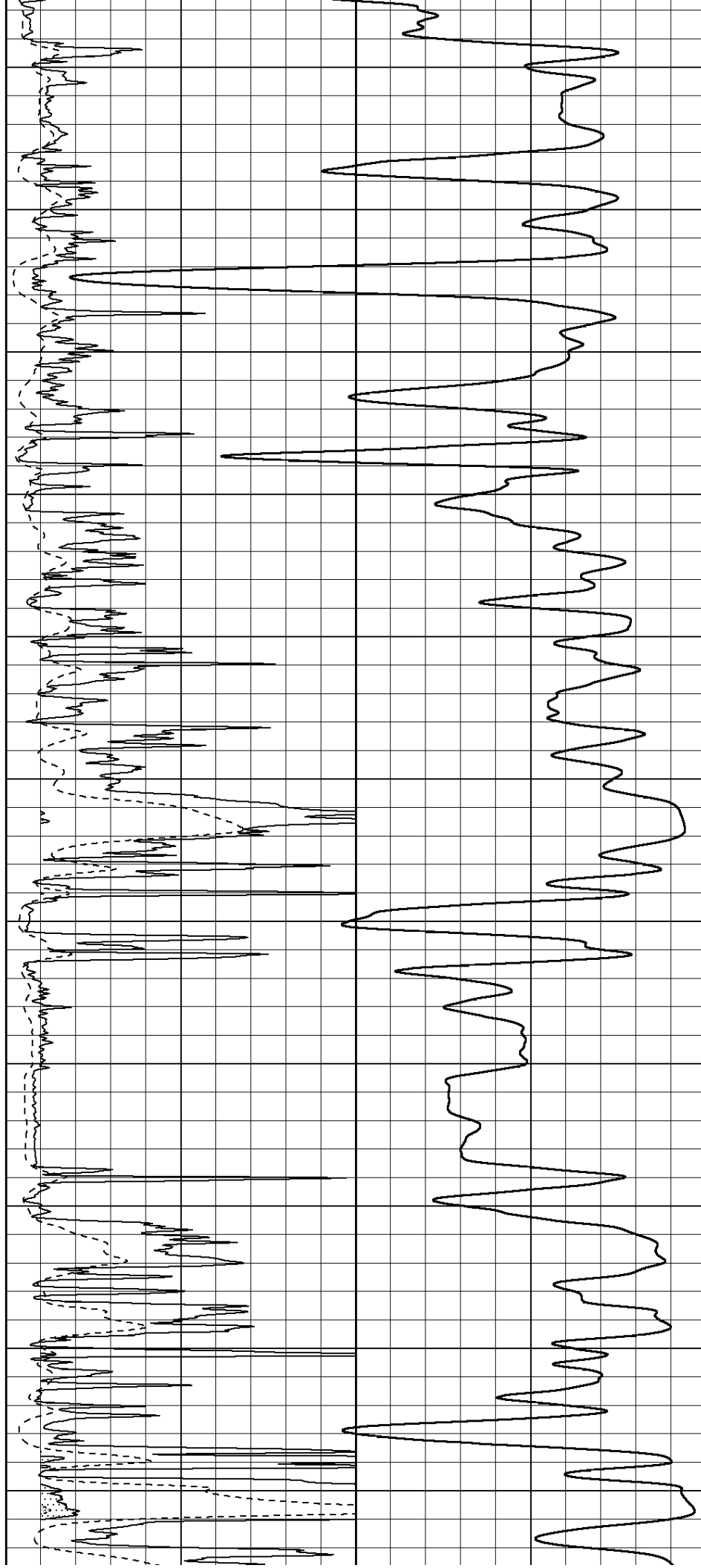
2950

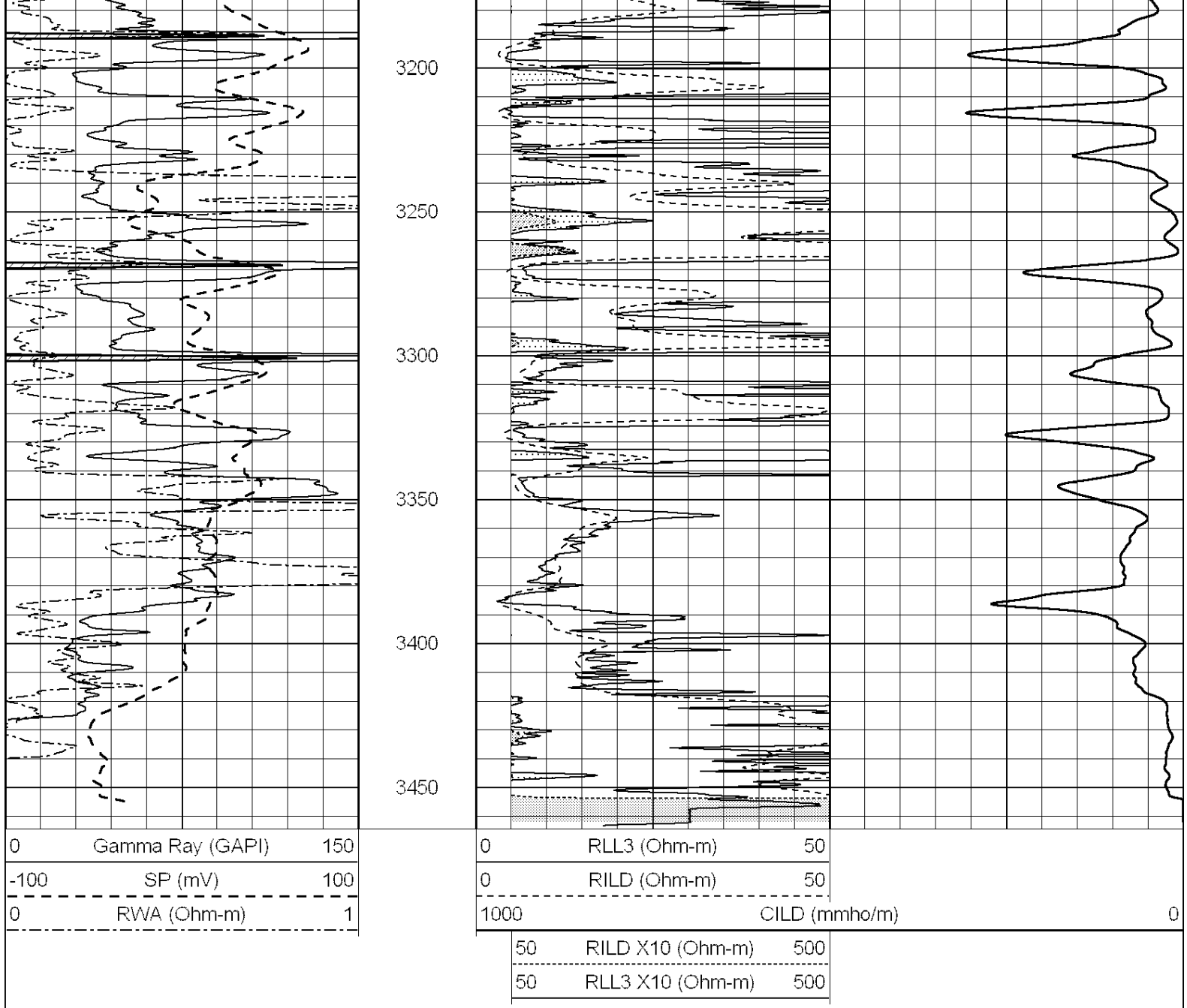
3000

3050

3100

3150

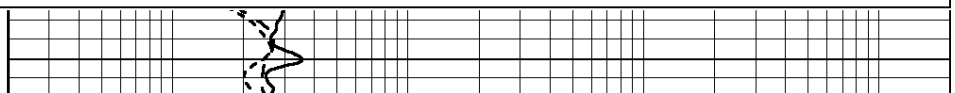
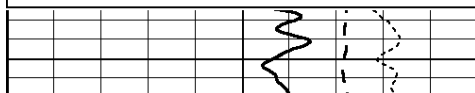


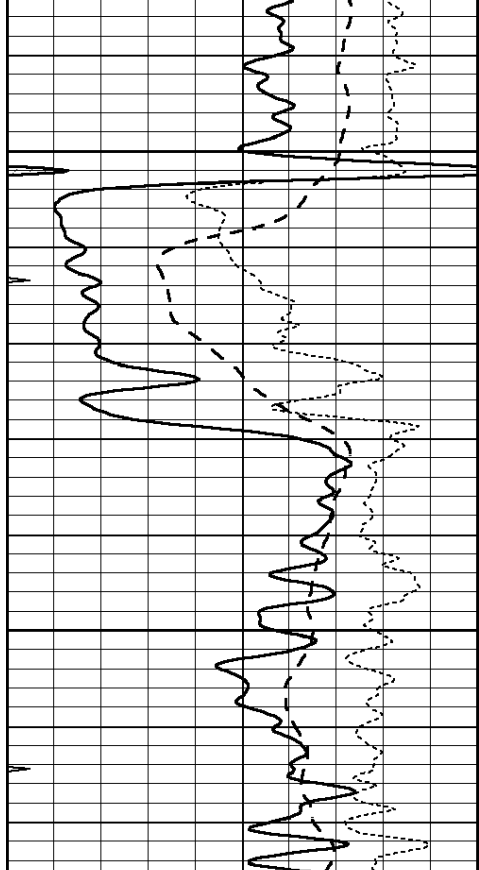


ANHYDRITE

Database File: 26629ddn.db
 Dataset Pathname: pass3.7
 Presentation Format: _dil
 Dataset Creation: Fri Jul 31 03:44:01 2015 by Calc SOC 120430
 Charted by: Depth in Feet scaled 1:240

0	GAMMA RAY (GAPI)	150	0.2	SHALLOW GUARD (Ohm-m)	2000
-100	SP (mV)	100	0.2	DEEP INDUCTION (Ohm-m)	2000
-250	Rxo/Rt	50	0.2	MEDIUM INDUCTION (Ohm-m)	2000
0	MINMK	20			

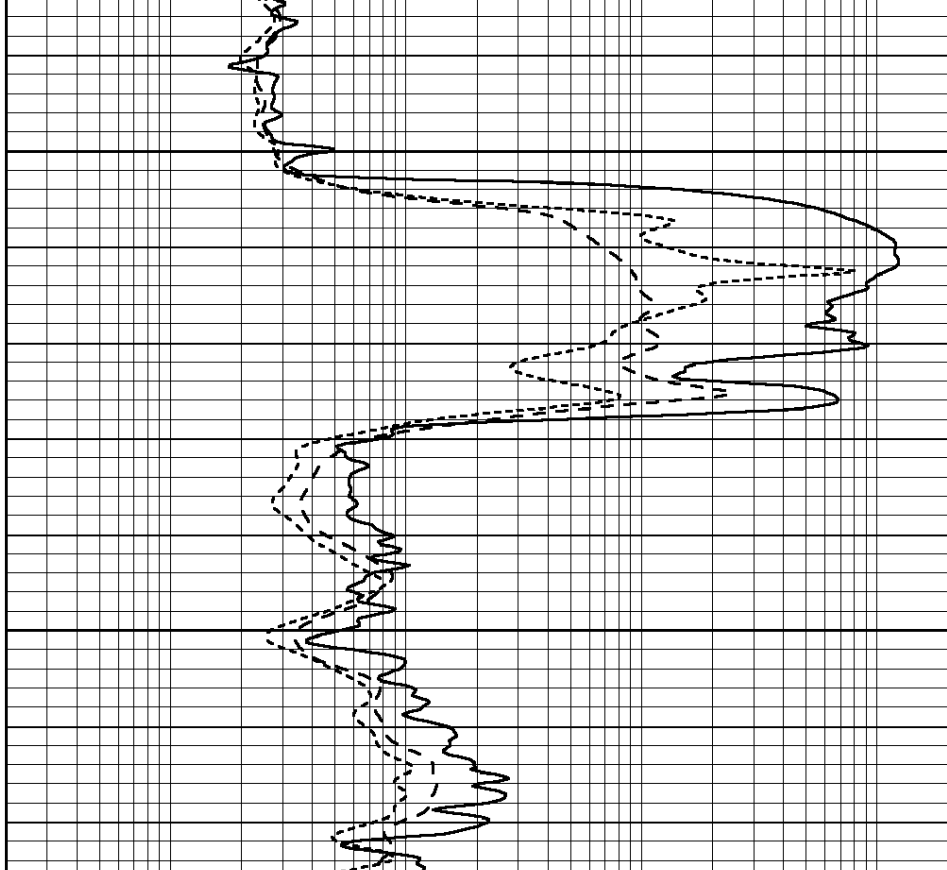




0	GAMMA RAY (GAPI)	150
-100	SP (mV)	100
-250	Rxo/Rt	50
0	MINMK	20

700

750



0.2	SHALLOW GUARD (Ohm-m)	2000
0.2	DEEP INDUCTION (Ohm-m)	2000
0.2	MEDIUM INDUCTION (Ohm-m)	2000



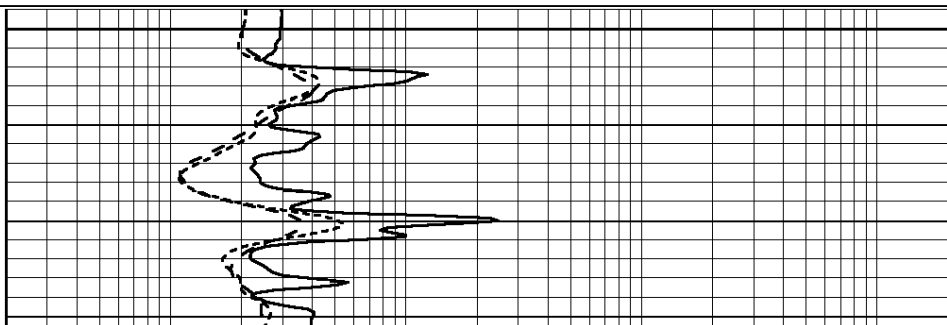
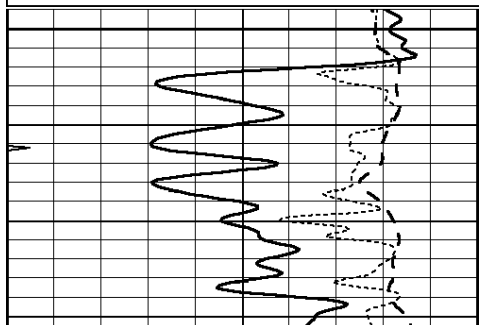
MAIN SECTION

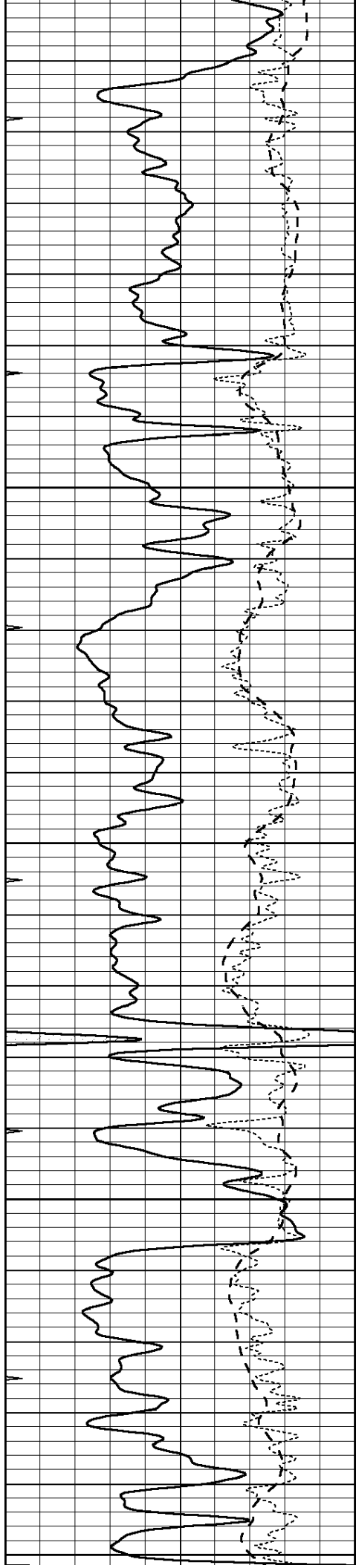
Database File: 26629ddn.db
 Dataset Pathname: pass3.8
 Presentation Format: _dil
 Dataset Creation: Fri Jul 31 03:44:14 2015 by Calc SOC 120430
 Charted by: Depth in Feet scaled 1:240

0	GAMMA RAY (GAPI)	150
-100	SP (mV)	100
-250	Rxo/Rt	50
0	MINMK	20

0.2	SHALLOW GUARD (Ohm-m)	2000
0.2	DEEP INDUCTION (Ohm-m)	2000
0.2	MEDIUM INDUCTION (Ohm-m)	2000

2600





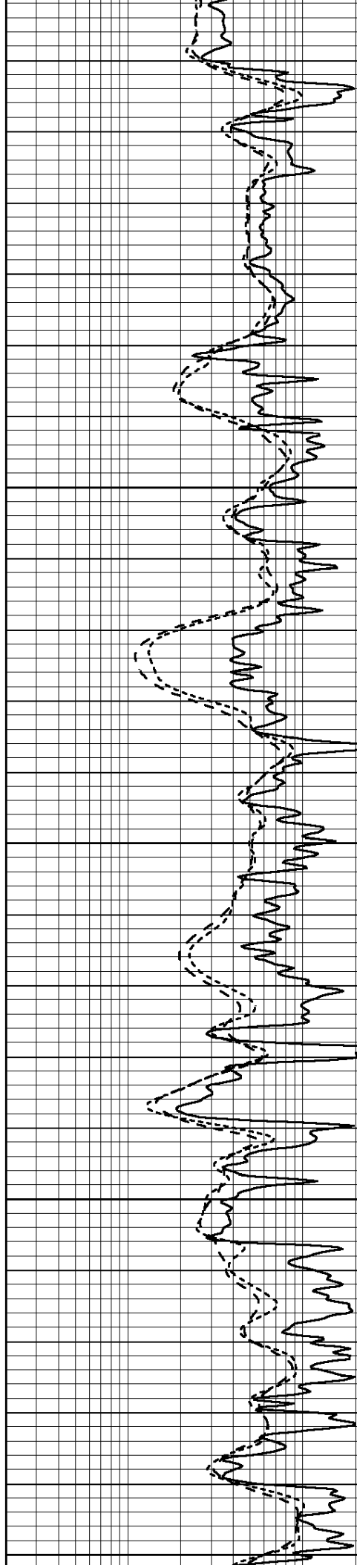
2650

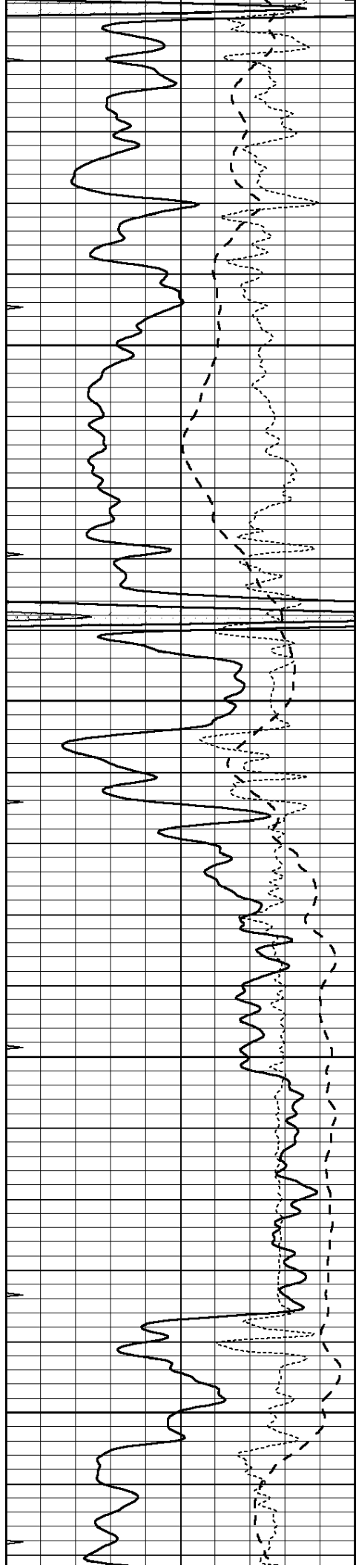
2700

2750

2800

2850



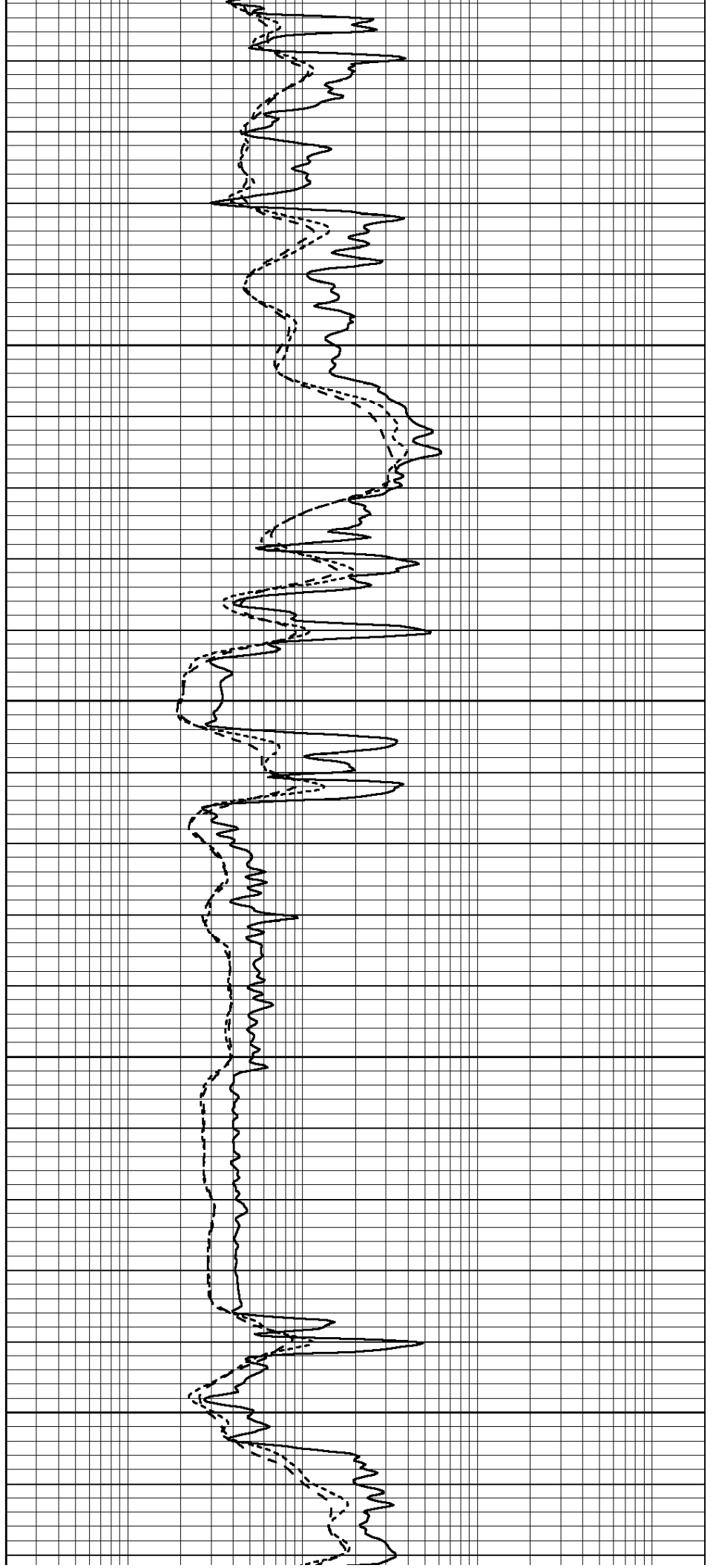


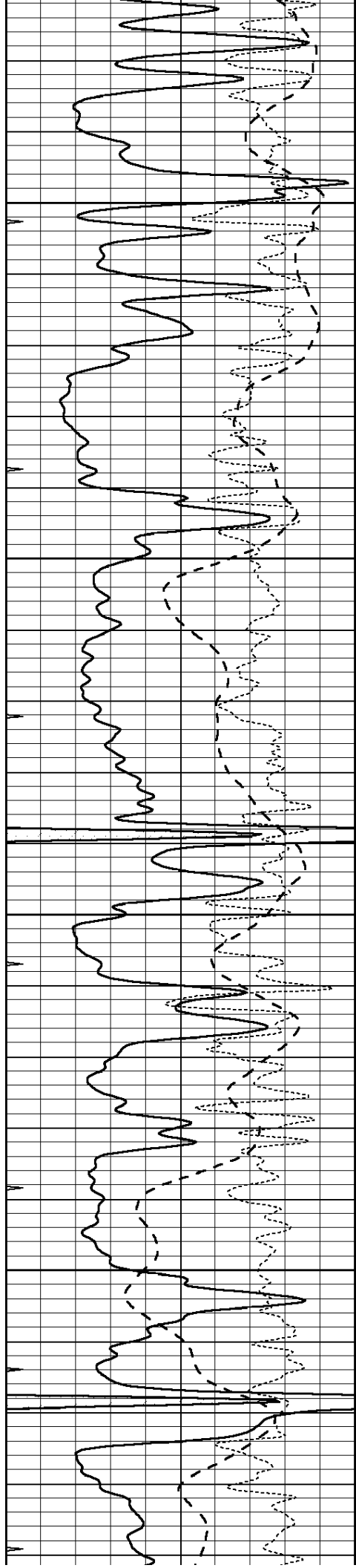
2900

2950

3000

3050



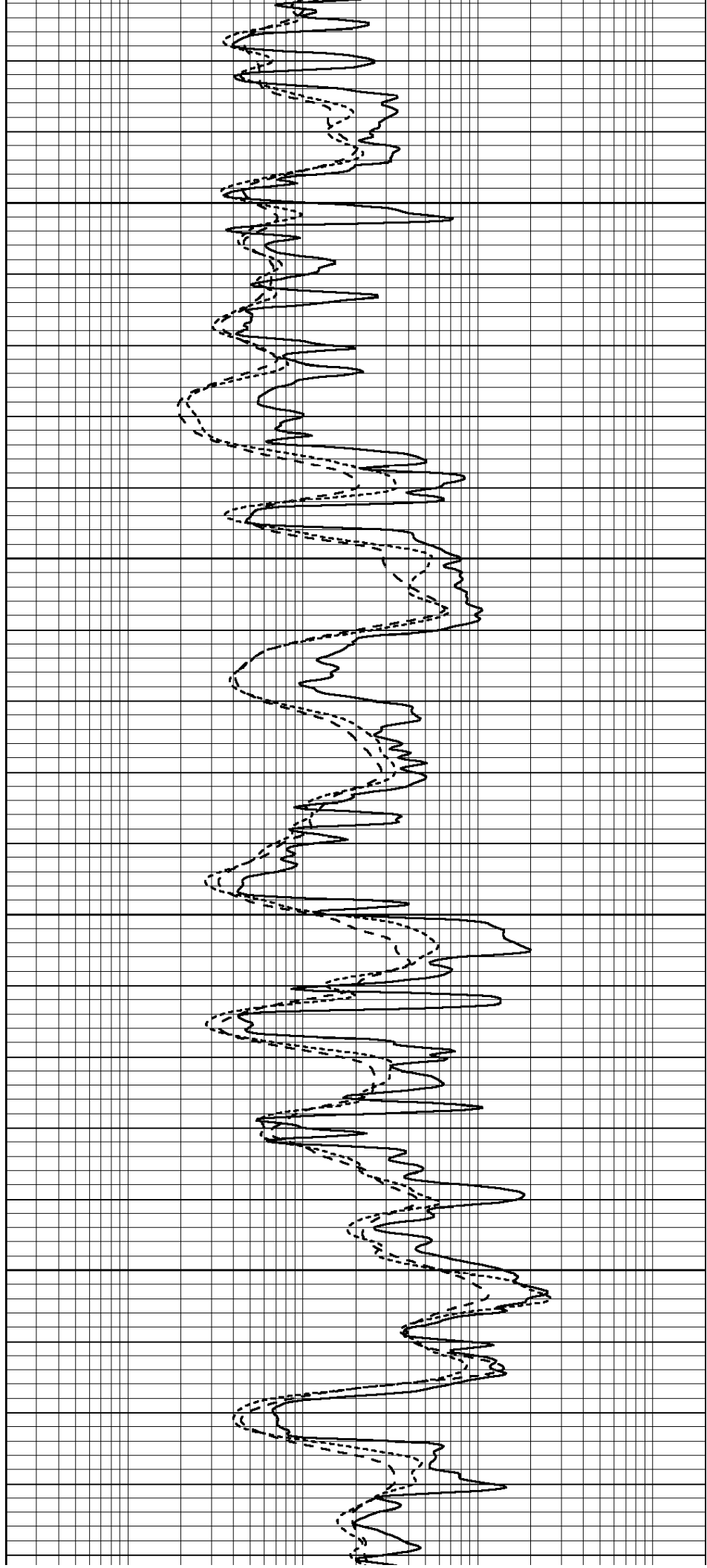


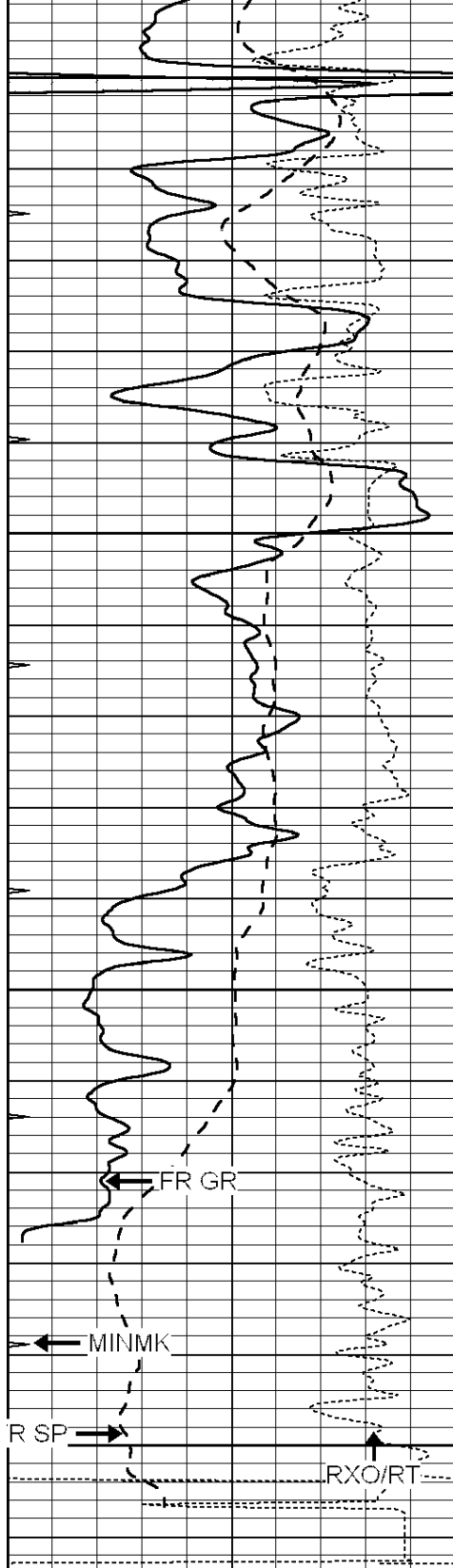
3100

3150

3200

3250





3300

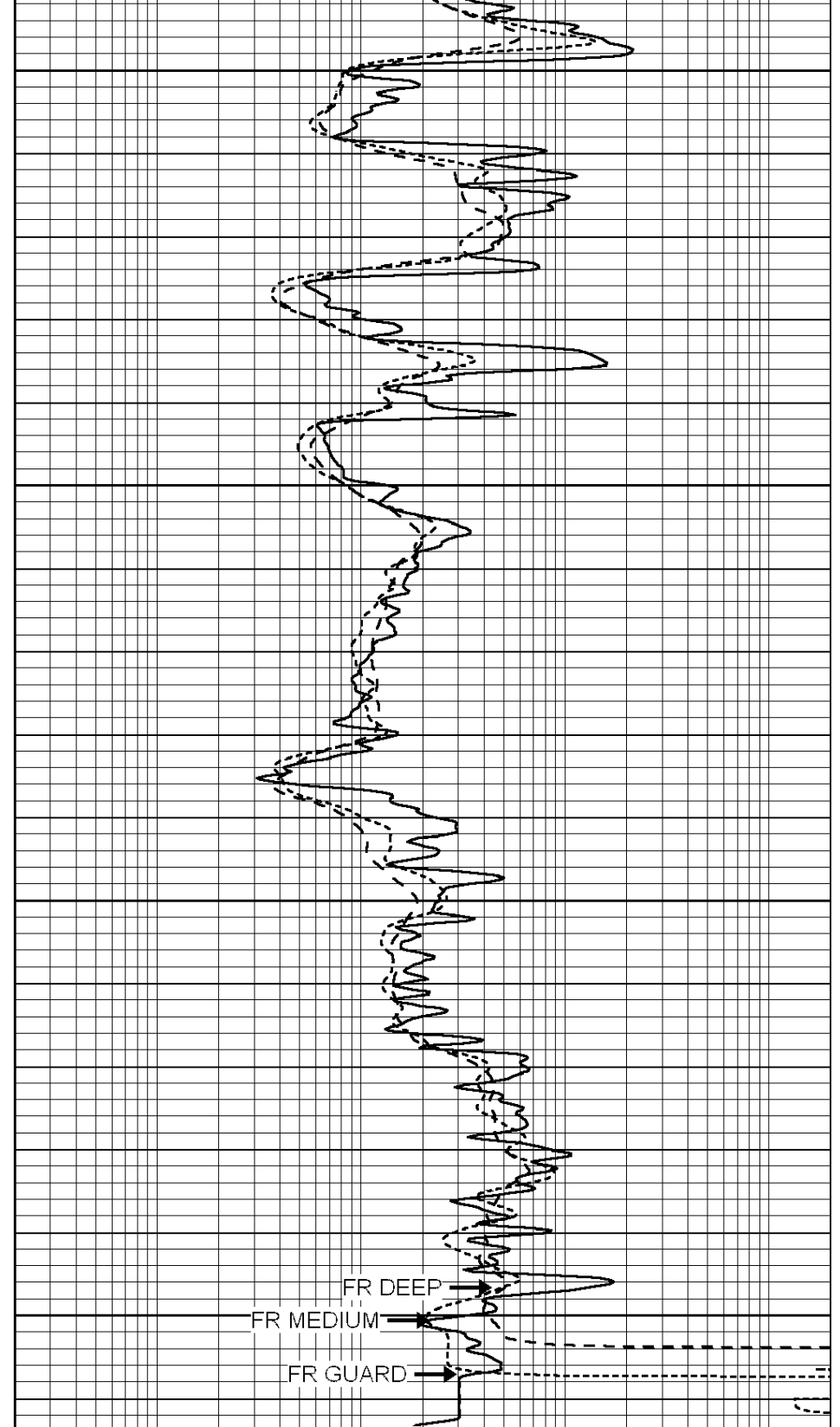
3350

3400

3450

LTD 3459

0	GAMMA RAY (GAPI)	150
-100	SP (mV)	100
-250	Rxo/Rt	50
0	MINMK	20

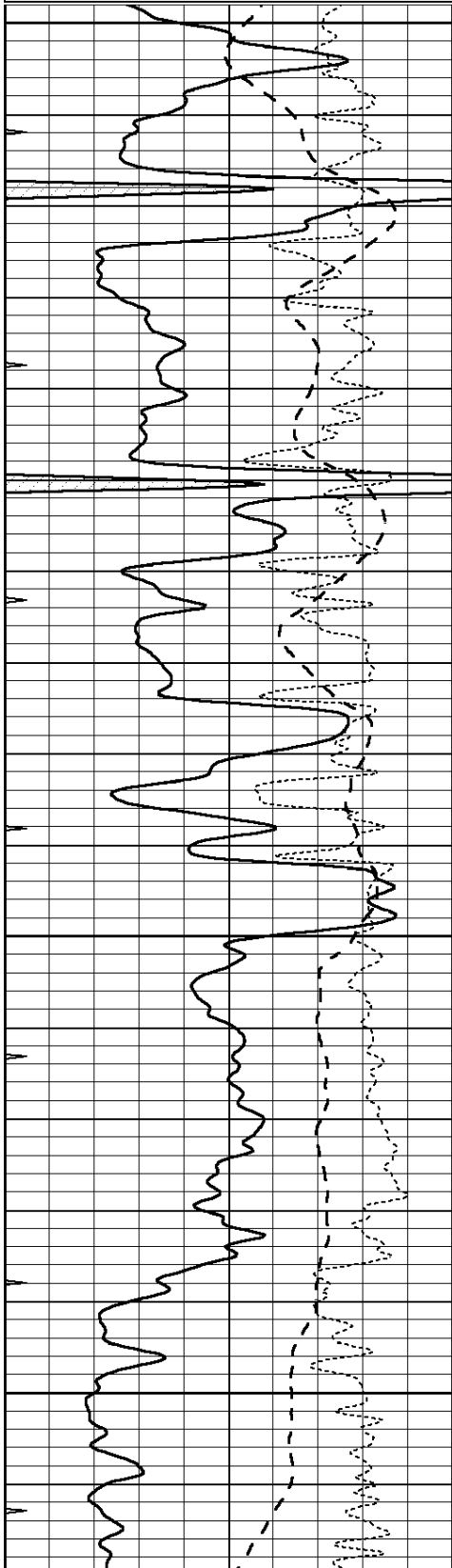


0.2	SHALLOW GUARD (Ohm-m)	2000
0.2	DEEP INDUCTION (Ohm-m)	2000
0.2	MEDIUM INDUCTION (Ohm-m)	2000

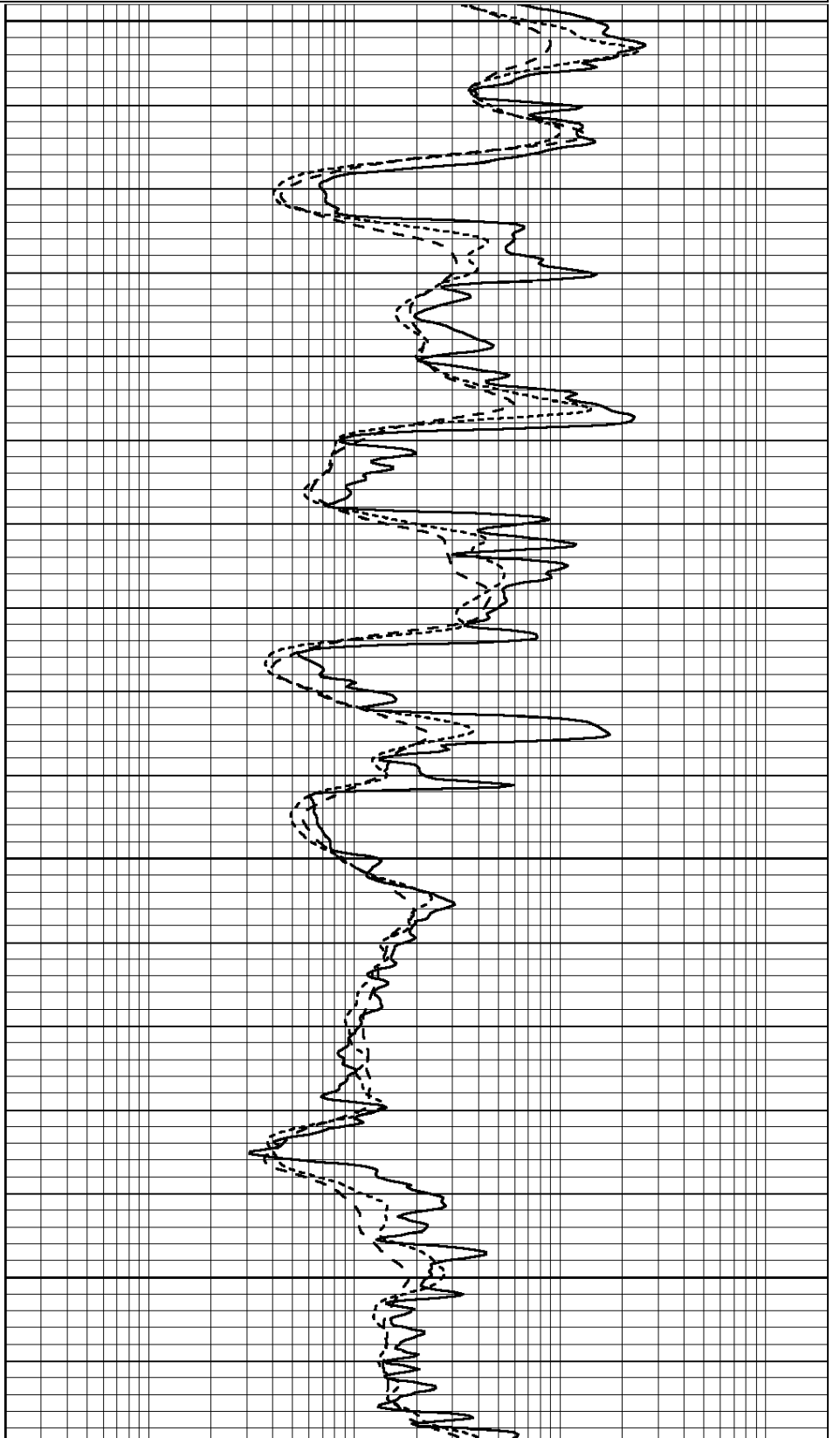
Database File: 26629ddn.db
 Dataset Pathname: pass2.4
 Presentation Format: _dil
 Dataset Creation: Fri Jul 31 02:58:36 2015
 Charted by: Depth in Feet scaled 1:240

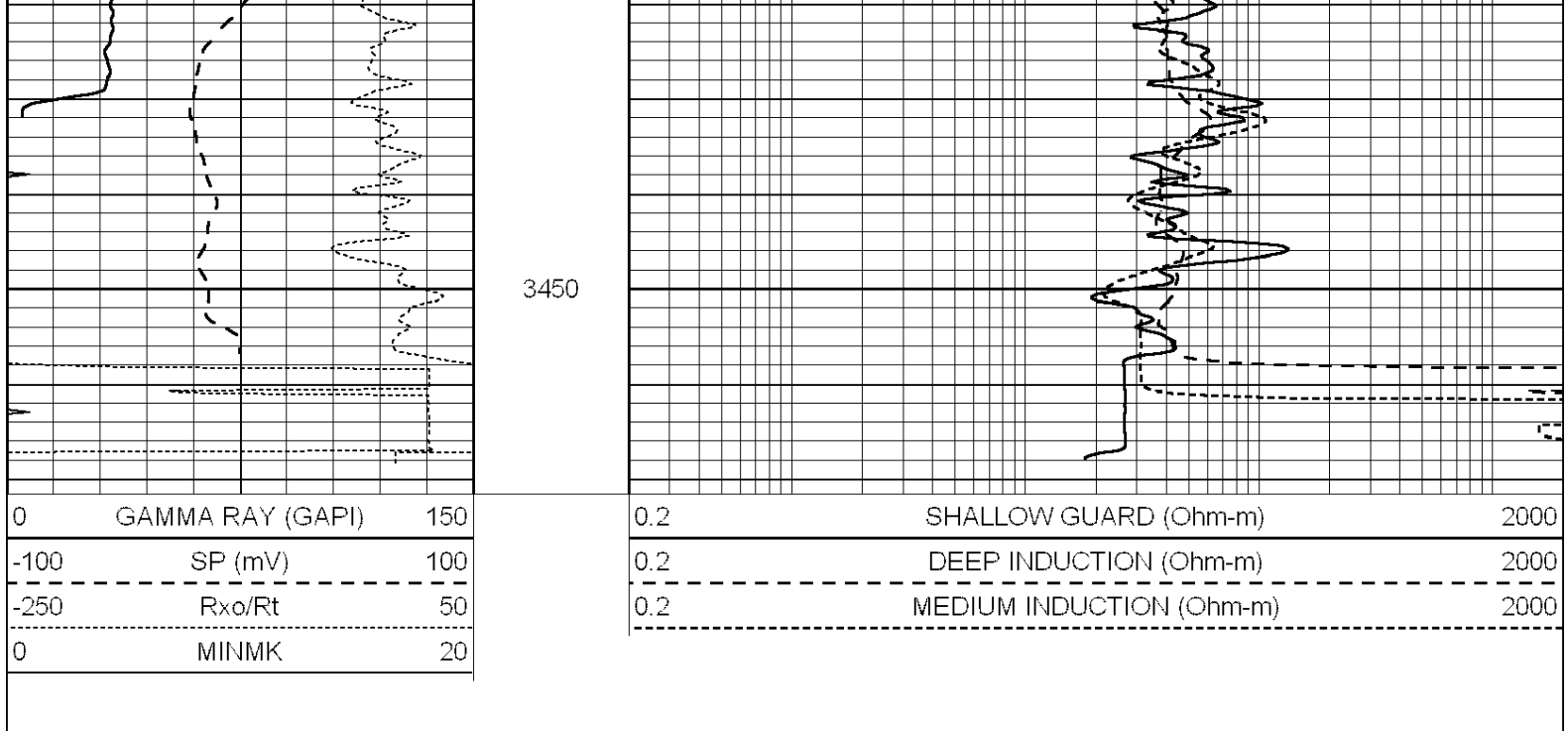
0	GAMMA RAY (GAPI)	150
-100	SP (mV)	100
-250	Rxo/Rt	50
0	MINMK	20

0.2	SHALLOW GUARD (Ohm-m)	2000
0.2	DEEP INDUCTION (Ohm-m)	2000
0.2	MEDIUM INDUCTION (Ohm-m)	2000



3250
 3300
 3350
 3400





Calibration Report

Database File: 26629ddn.db
 Dataset Pathname: pass3.8
 Dataset Creation: Fri Jul 31 03:44:14 2015 by Calc SOC 120430

Dual Induction Calibration Report

Serial-Model: PROBE9-DILG
 Surface Cal Performed: Mon May 04 16:08:03 2015
 Downhole Cal Performed: Mon Jul 28 12:02:56 2008
 After Survey Verification Performed: Mon Jul 28 12:02:56 2008

Surface Calibration

Loop:	Readings				References		Results	
	Air	Loop			Air	Loop	m	b
Deep	-0.014	0.629	V	0.000	400.000	mmho/m	670.000	-18.000
Medium	0.039	0.728	V	0.000	464.000	mmho/m	670.000	-28.000
Internal:	Zero	Cal		Zero	Cal		m	b
Deep	0.011	0.610	V	0.000	400.000	mmho/m	667.135	-7.256
Medium	0.005	0.712	V	0.000	464.000	mmho/m	655.677	-3.102

Downhole Calibration

	Readings				References		Results	
	Zero	Cal			Zero	Cal	m'	b'
Deep	0.000	0.000	mmho/m	14.508	388.384	mmho/m	1.000	0.000
Medium	0.000	0.000	mmho/m	166.367	504.400	mmho/m	1.000	0.000
LL3		7.500	V		1400.000	Ohm-m		
		0.000	V		20.000	Ohm-m		
		-7.200	V		4000.000	mmho-m		

After Survey Verification

	Readings				Targets		Results	
	Zero	Cal			Zero	Cal	m'	b'
Deep	0.000	0.000	mmho/m	0.000	0.000	mmho/m	0.000	0.000
Medium	0.000	0.000	mmho/m	0.000	0.000	mmho/m	0.000	0.000

LL3

1.000 Ohm-m
0.000 Ohm-m
1.000 mmho-m1.000 Ohm-m
0.000 Ohm-m
1.000 mmho-mLitho Density Calibration Report
Serial: 003N Model: PRB

Master Calibration

Performed Tue Sep 08 14:14:44 2009

	Background	Magnesium	Aluminum	Sandstone	
Window 1	2042.6	12312.8	4225.8	13758.4	cps
Window 2	1855.8	10134.7	3624.2	11113.1	cps
Window 3	1639.4	6760.2	2716.3	7260.3	cps
Window 4	466.4	469.2	466.1	476.5	cps
Long Space	0.0	8278.9	1768.4	9257.4	cps
Short Space	2.2	2377.3	1544.1	2574.2	cps
Rho		1.7100	2.5900	1.3800	g/cc
Pe		0.0000	2.5700	1.5500	
Rib Angle	: 44.4	Rib Slope	: 0.979	Density/Spine Ratio	: 0.549
Spine Angle	: 74.4	Spine Slope	: 3.577	Spine Intercept	: -18.8

Before Survey Verification

Performed Wed Dec 31 18:00:00 1969

Window 1	0.0	0.0	0.0	0.0	cps
Window 2	0.0	0.0	0.0	0.0	cps
Window 3	0.0	0.0	0.0	0.0	cps
Window 4	0.0	0.0	0.0	0.0	cps
Long Space	0.0	0.0	0.0	0.0	cps
Short Space	0.0	0.0	0.0	0.0	cps
Measured Rho		0.0000	0.0000	0.0000	g/cc
Measured Correction		0.0000	0.0000	0.0000	g/cc
Measured Pe			0.0000	0.0000	

After Survey Verification

Performed Wed Dec 31 18:00:00 1969

Window 1	0.0	0.0	0.0	0.0	cps
Window 2	0.0	0.0	0.0	0.0	cps
Window 3	0.0	0.0	0.0	0.0	cps
Window 4	0.0	0.0	0.0	0.0	cps
Long Space	0.0	0.0	0.0	0.0	cps
Short Space	0.0	0.0	0.0	0.0	cps
Measured Rho		0.0000	0.0000	0.0000	g/cc
Measured Correction		0.0000	0.0000	0.0000	g/cc
Measured Pe			0.0000	0.0000	

Compensated Neutron Calibration Report

Serial Number: 070808
Tool Model: Probe

PRE-SURVEY VERIFICATION

Detector	Readings	Measured	Target
Short Space	cps		
Long Space	cps	pu	pu

POST-SURVEY VERIFICATION

Detector	Readings	Measured	Target
----------	----------	----------	--------

Detector

Readings

measured

target

Short Space
Long Space

cps
cps

pu

pu

Gamma Ray Calibration Report

Serial Number:	070558	
Tool Model:	OPEN_GR	
Performed:	Sat Mar 21 17:40:37 2015	
Calibrator Value:	1.0	GAPI
Background Reading:	0.0	cps
Calibrator Reading:	1.0	cps
Sensitivity:	0.2800	GAPI/cps