



**COMPLETION
& PRODUCTION
SERVICES CO.**

**COMPENSATED
DENSITY / NEUTRON
LOG**

Company RUPE OIL COMPANY, INC.
Well WHISLER #1
Field STOLTENBERG
County ELLSWORTH
State KANSAS

Company RUPE OIL COMPANY, INC.
Well WHISLER #1
Field STOLTENBERG
County ELLSWORTH State KANSAS

Location: API # : 15-053-21330-0000
1182' FNL & 1802' FEL
SW - SE - NW - NE
SEC 19 TWP 16S RGE 10W
Permanent Datum GROUND LEVEL Elevation 1885
Log Measured From KELLY BUSHING 13' A.G.L.
Drilling Measured From KELLY BUSHING
Other Services DIL/MEL
Elevation
K.B. 1898
D.F. 1896
G.L. 1885

Date	7/31/15		
Run Number	ONE		
Depth Driller	3460		
Depth Logger	3459		
Bottom Logged Interval	3435		
Top Log Interval	2600		
Casing Driller	8 5/8" @ 395'		
Casing Logger	394		
Bit Size	7 7/8"		
Type Fluid in Hole	CHEMICAL MUD	CHLORIDES 7,600 PPM	
Density / Viscosity	9.2/48		
pH / Fluid Loss	9.5/10.4		
Source of Sample	FLOWLINE		
Rim @ Meas. Temp	.500 @ 80F		
Rmf @ Meas. Temp	.375 @ 80F		
Rmc @ Meas. Temp	.600 @ 80F		
Source of Rmf / Rmc	MEASUREMENT		
Rim @ BHT	.360 @ 111F		
Time Circulation Stopped	2 HOURS		
Time Logger on Bottom	2:30 A.M.		
Maximum Recorded Temperature	111F		
Equipment Number	4854		
Location	HAYS, KANSAS		
Recorded By	JEFF LUEBBERS		
Witnessed By	STEVEN PETERMANN		

<<< Fold Here >>>

All interpretations are opinions based on inferences from electrical or other measurements and we cannot and do not guarantee the accuracy or correctness of any interpretation, and we shall not, except in the case of gross or willful negligence on our part, be liable or responsible for any loss, costs, damages, or expenses incurred or sustained by anyone resulting from any interpretation made by any of our officers, agents or employees. These interpretations are also subject to our general terms and conditions set out in our current Price Schedule.

Comments

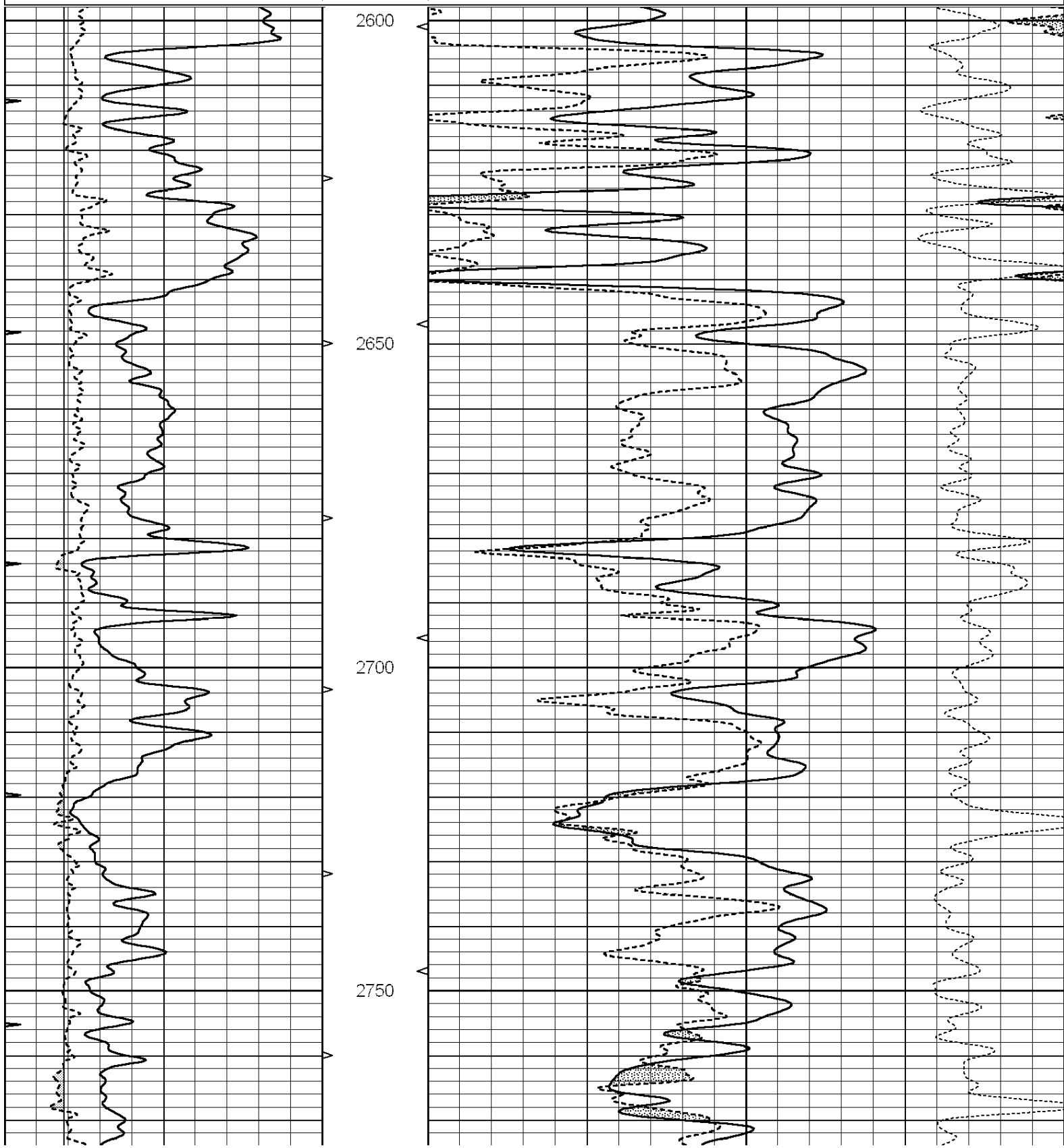
THANK YOU FOR USING "NABORS" HAYS, KANSAS (785) 628-6395
DIRECTIONS
WILSON, KS. & OLD 40. 12S. ON HOLYROOD BLKTOP TO "AVE. P", 1/2E., S. INTO

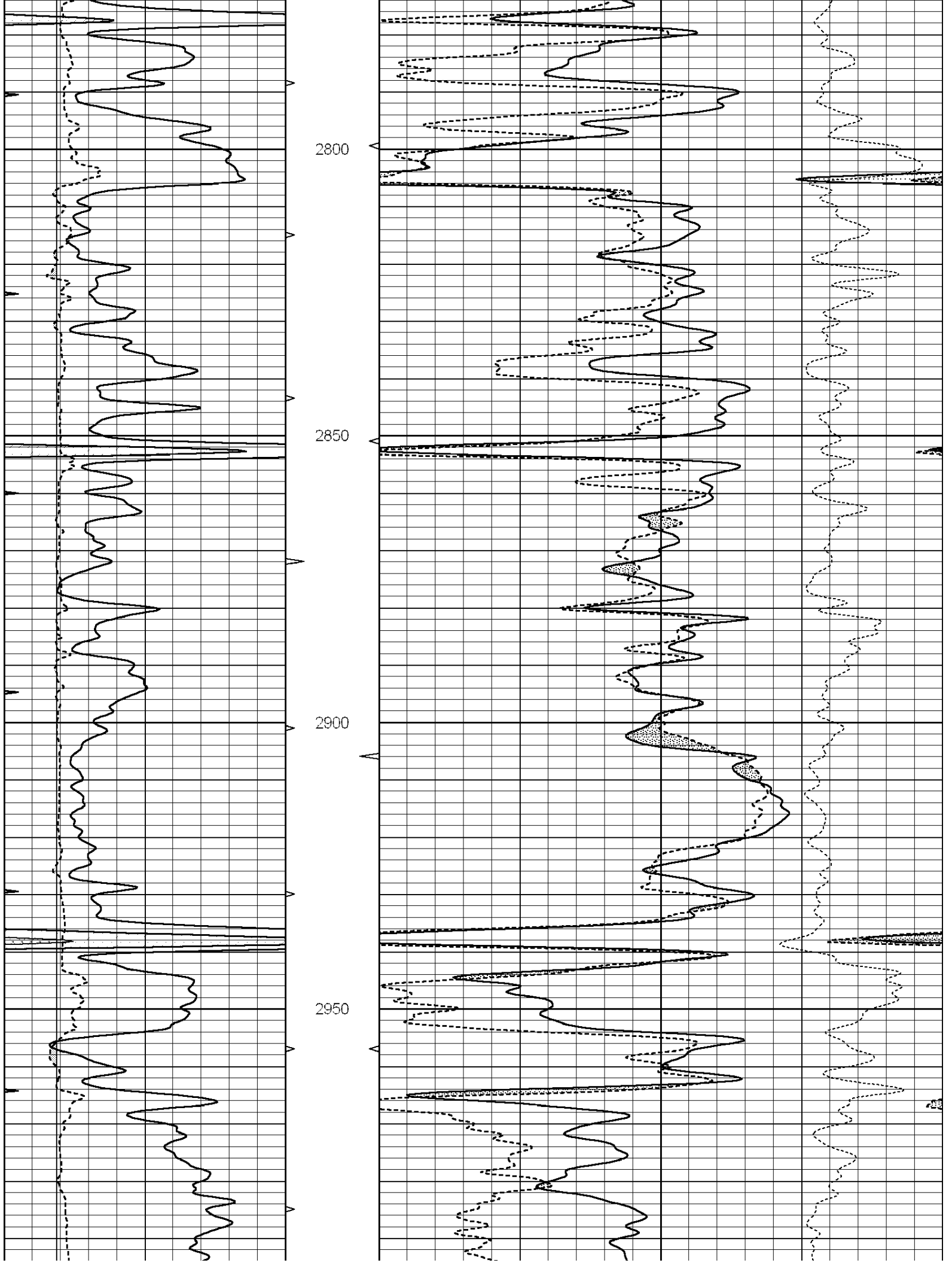


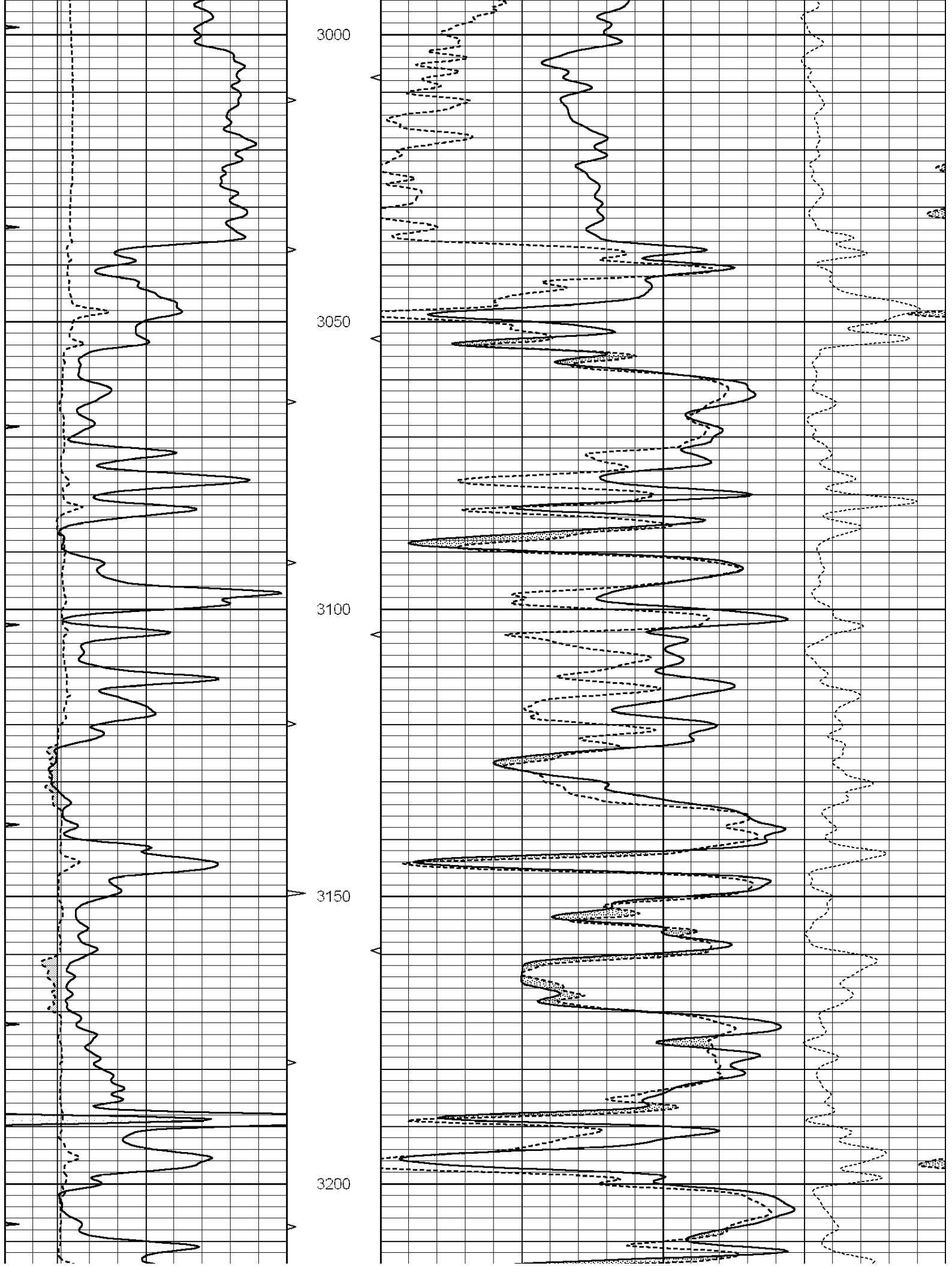
MAIN SECTION

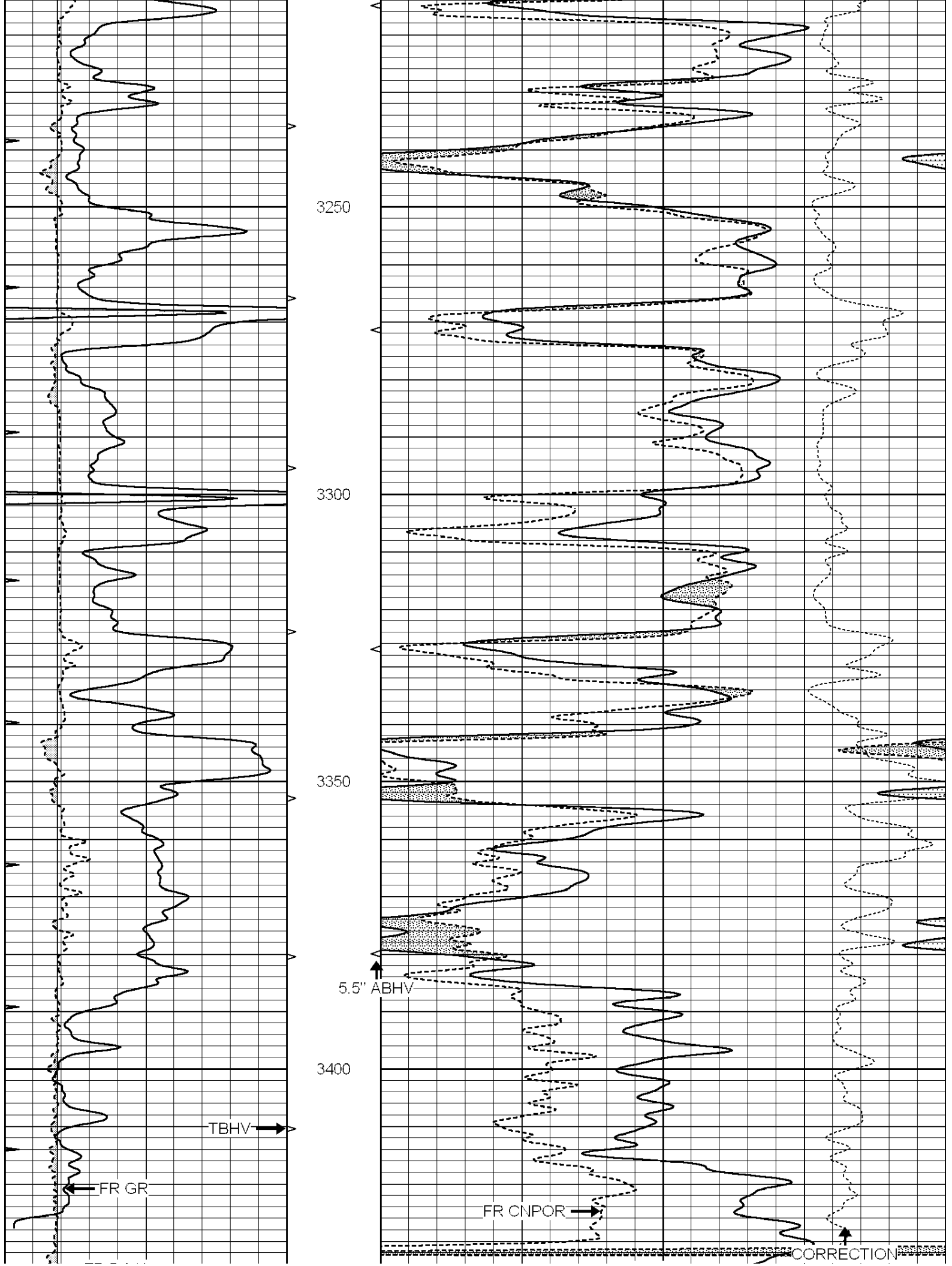
Database File: 26629ddn.db
 Dataset Pathname: pass3.5
 Presentation Format: den_neu
 Dataset Creation: Fri Jul 31 03:17:35 2015 by Calc SOC 120430
 Charted by: Depth in Feet scaled 1:240

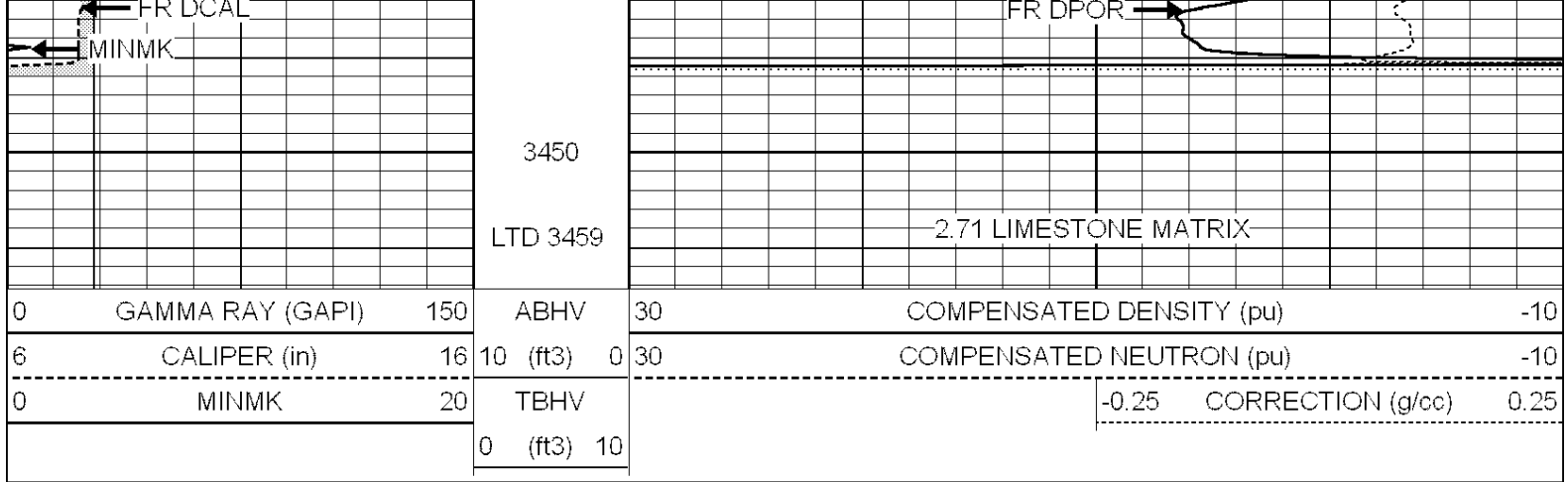
0	GAMMA RAY (GAPI)	150	ABHV	30	COMPENSATED DENSITY (pu)	-10
6	CALIPER (in)	16	10 (ft3)	0 30	COMPENSATED NEUTRON (pu)	-10
0	MINMK	20	TBHV		-0.25 CORRECTION (g/cc)	0.25
			0 (ft3)	10		







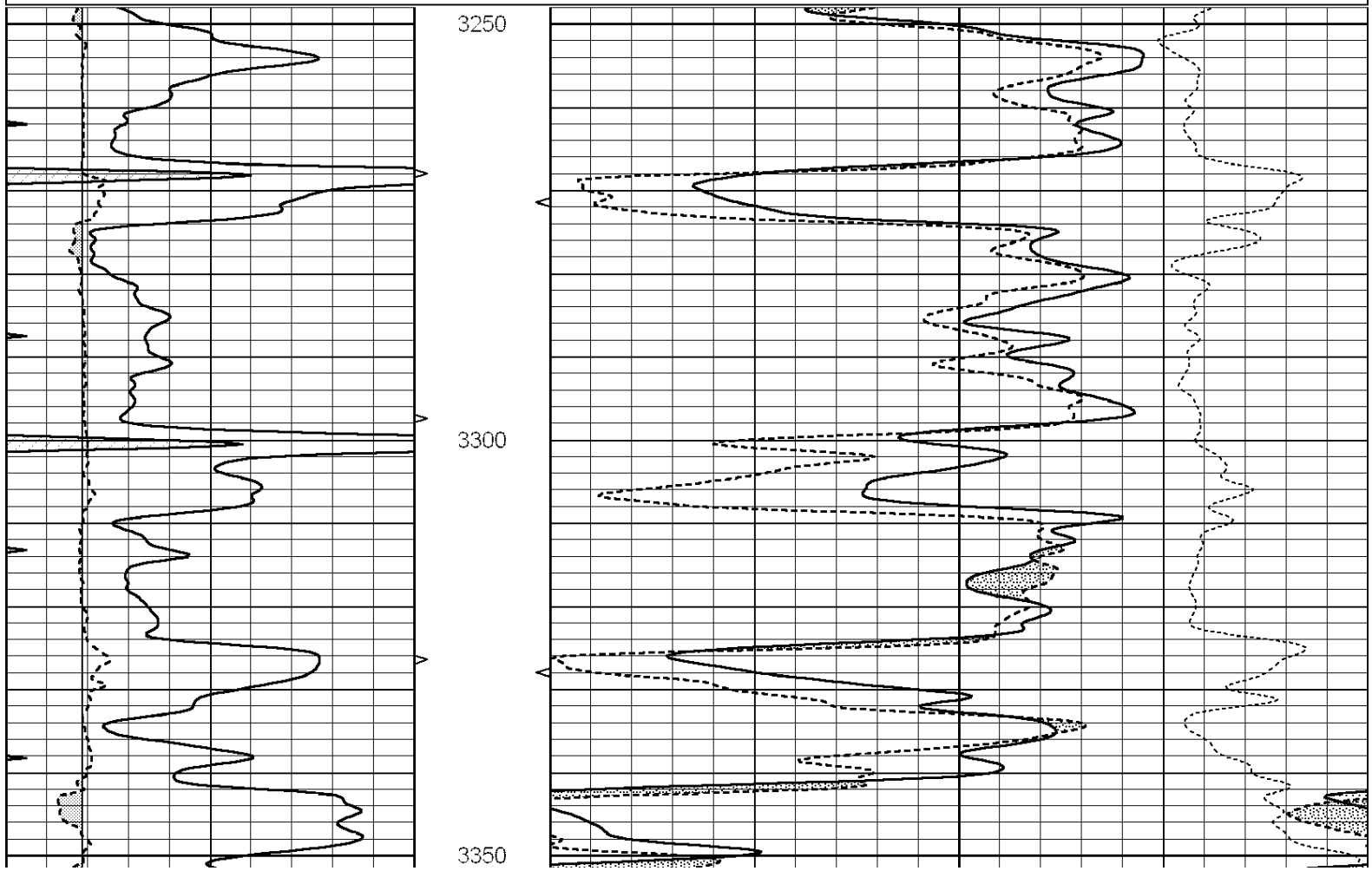


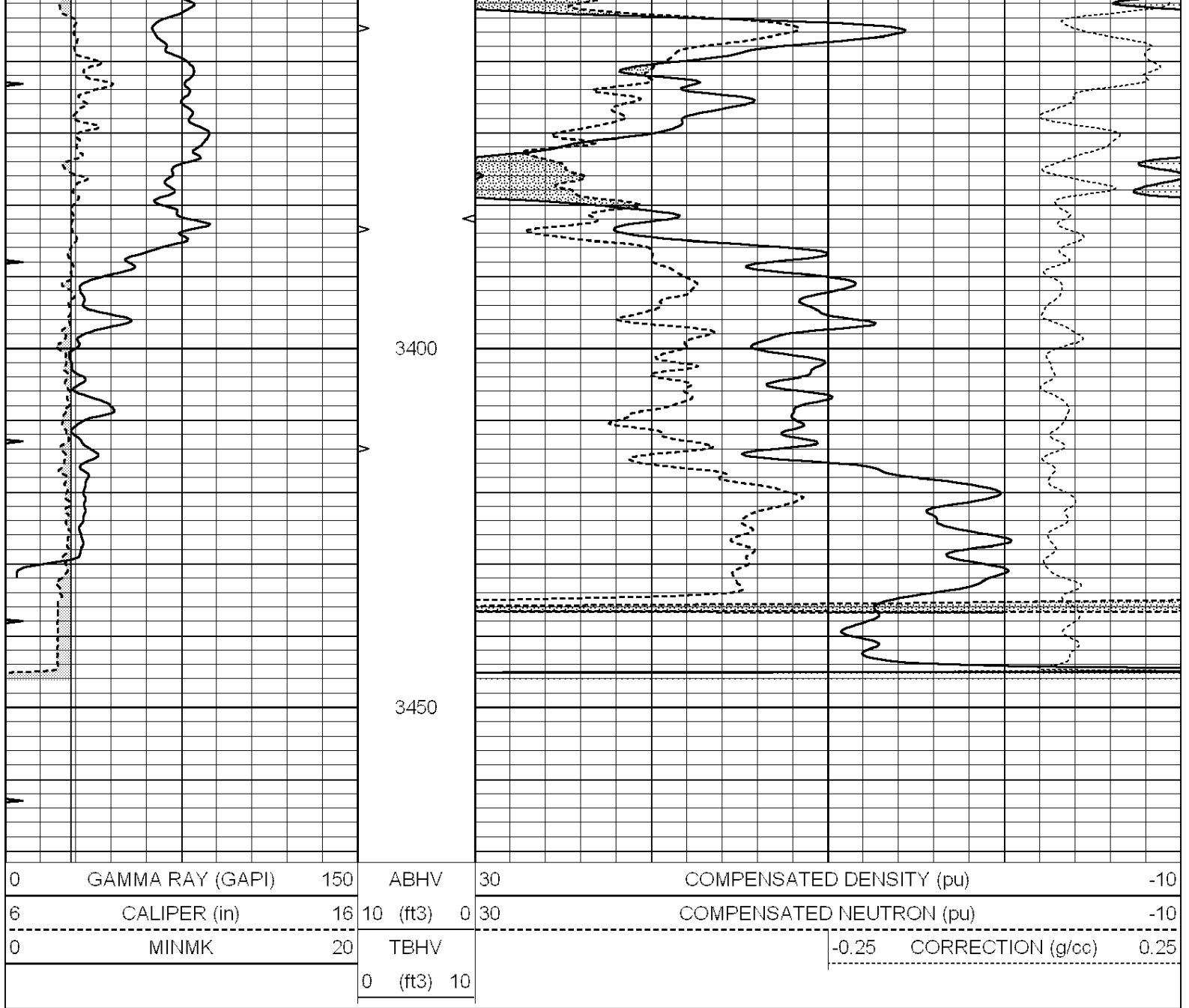


REPEAT SECTION

Database File: 26629ddn.db
 Dataset Pathname: pass2.4
 Presentation Format: den_neu
 Dataset Creation: Fri Jul 31 02:58:36 2015
 Charted by: Depth in Feet scaled 1:240

0	GAMMA RAY (GAPI)	150	ABHV	30	COMPENSATED DENSITY (pu)	-10
6	CALIPER (in)	16	10 (ft3)	0	COMPENSATED NEUTRON (pu)	-10
0	MINMK	20	TBHV		-0.25	CORRECTION (g/cc) 0.25
			0 (ft3)	10		

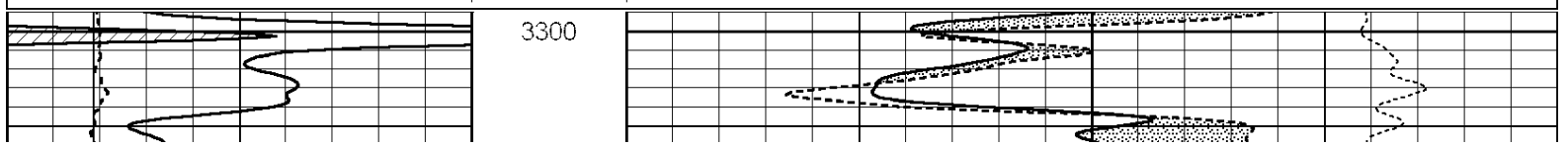


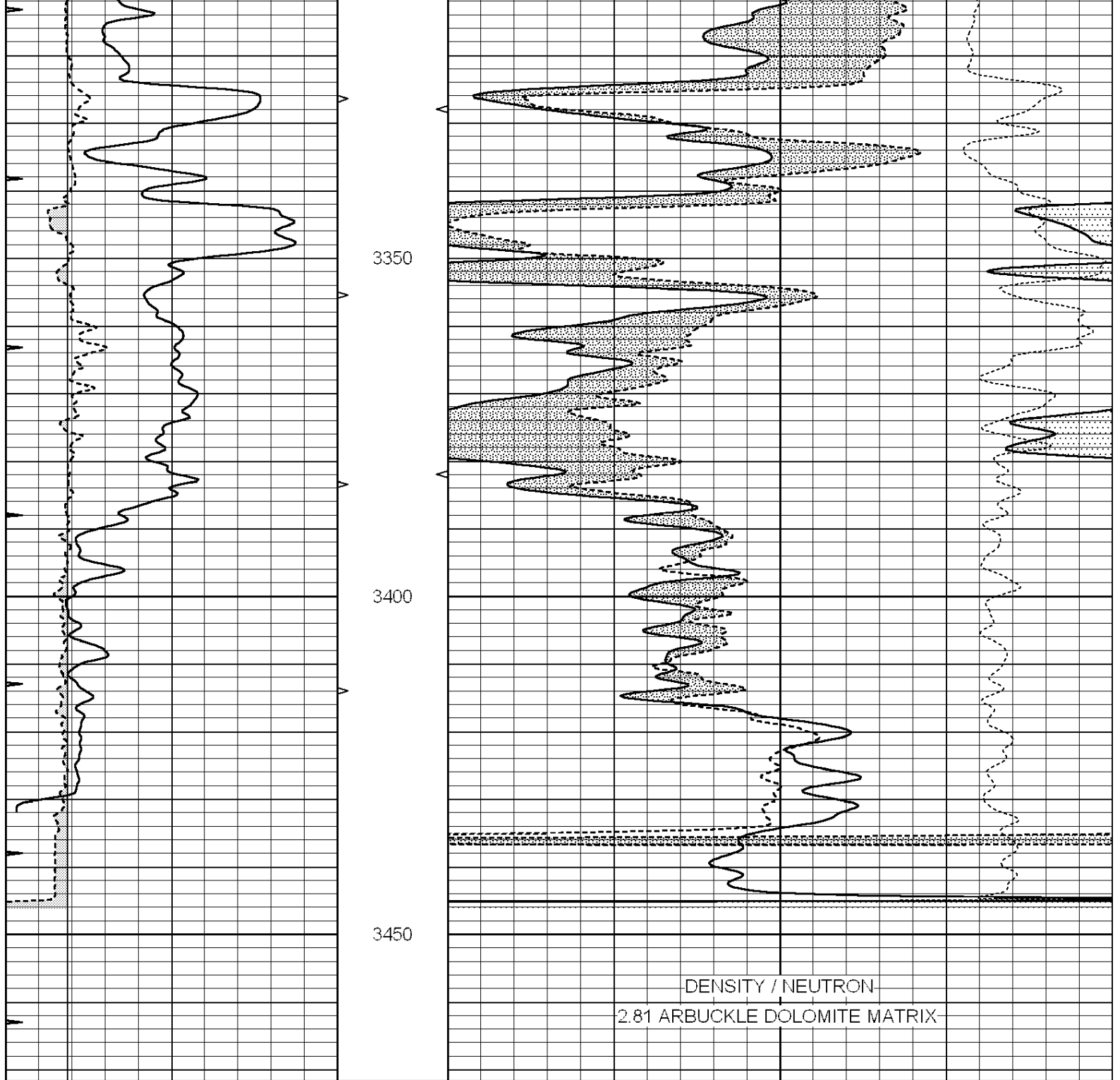


DOLOMITE MATRIX

Database File: 26629ddn.db
 Dataset Pathname: pass2.5D
 Presentation Format: den_neu
 Dataset Creation: Fri Jul 31 03:00:17 2015
 Charted by: Depth in Feet scaled 1:240

0	GAMMA RAY (GAPI)	150	ABHV	30	COMPENSATED DENSITY (pu)	-10
6	CALIPER (in)	16	10 (ft3)	0 30	COMPENSATED NEUTRON (pu)	-10
0	MINMK	20	TBHV		-0.25 CORRECTION (g/cc)	0.25
			0 (ft3)	10		





0	GAMMA RAY (GAPI)	150	ABHV	30	COMPENSATED DENSITY (pu)	-10
6	CALIPER (in)	16	10 (ft3)	0 30	COMPENSATED NEUTRON (pu)	-10
0	MINMK	20	TBHV		-0.25 CORRECTION (g/cc)	0.25
			0 (ft3)	10		

Calibration Report

Database File: 26629ddn.db
 Dataset Pathname: pass3.5
 Dataset Creation: Fri Jul 31 03:17:35 2015 by Calc SOC 120430

Dual Induction Calibration Report

Serial-Model: PROBE9-DILG
 Surface Cal Performed: Mon May 04 16:08:03 2015
 Downhole Cal Performed: Mon Jul 28 12:02:56 2008

Surface Calibration									
		Readings			References			Results	
Loop:	Air	Loop		Air	Loop		m	b	
Deep	-0.014	0.629	V	0.000	400.000	mmho/m	670.000	-18.000	
Medium	0.039	0.728	V	0.000	464.000	mmho/m	670.000	-28.000	
Internal:	Zero	Cal		Zero	Cal		m	b	
Deep	0.011	0.610	V	0.000	400.000	mmho/m	667.135	-7.256	
Medium	0.005	0.712	V	0.000	464.000	mmho/m	655.677	-3.102	

Downhole Calibration									
		Readings			References			Results	
		Zero	Cal		Zero	Cal		m'	b'
Deep	0.000	0.000	mmho/m	14.508	388.384	mmho/m	1.000	0.000	
Medium	0.000	0.000	mmho/m	166.367	504.400	mmho/m	1.000	0.000	
LL3		7.500	V		1400.000	Ohm-m			
		0.000	V		20.000	Ohm-m			
		-7.200	V		4000.000	mmho-m			

After Survey Verification									
		Readings			Targets			Results	
		Zero	Cal		Zero	Cal		m'	b'
Deep	0.000	0.000	mmho/m	0.000	0.000	mmho/m	0.000	0.000	
Medium	0.000	0.000	mmho/m	0.000	0.000	mmho/m	0.000	0.000	
LL3		1.000	Ohm-m		1.000	Ohm-m			
		0.000	Ohm-m		0.000	Ohm-m			
		1.000	mmho-m		1.000	mmho-m			

Litho Density Calibration Report
Serial: 003N Model: PRB

Master Calibration		Performed Tue Sep 08 14:14:44 2009						
		Background	Magnesium	Aluminum	Sandstone			
Window 1		2042.6	12312.8	4225.8	13758.4	cps		
Window 2		1855.8	10134.7	3624.2	11113.1	cps		
Window 3		1639.4	6760.2	2716.3	7260.3	cps		
Window 4		466.4	469.2	466.1	476.5	cps		
Long Space		0.0	8278.9	1768.4	9257.4	cps		
Short Space		2.2	2377.3	1544.1	2574.2	cps		
Rho			1.7100	2.5900	1.3800	g/cc		
Pe			0.0000	2.5700	1.5500			
Rib Angle	: 44.4	Rib Slope	: 0.979	Density/Spine Ratio	: 0.549			
Spine Angle	: 74.4	Spine Slope	: 3.577	Spine Intercept	: -18.8			

Before Survey Verification		Performed Wed Dec 31 18:00:00 1969						
Window 1	0.0	0.0	0.0	0.0	0.0	cps		
Window 2	0.0	0.0	0.0	0.0	0.0	cps		
Window 3	0.0	0.0	0.0	0.0	0.0	cps		
Window 4	0.0	0.0	0.0	0.0	0.0	cps		
Long Space	0.0	0.0	0.0	0.0	0.0	cps		
Short Space	0.0	0.0	0.0	0.0	0.0	cps		
Measured Rho		0.0000	0.0000	0.0000	0.0000	g/cc		
Measured Correction		0.0000	0.0000	0.0000	0.0000	g/cc		
Measured Pe			0.0000	0.0000	0.0000			

After Survey Verification

Performed Wed Dec 31 18:00:00 1969

Window 1	0.0	0.0	0.0	0.0	cps
Window 2	0.0	0.0	0.0	0.0	cps
Window 3	0.0	0.0	0.0	0.0	cps
Window 4	0.0	0.0	0.0	0.0	cps
Long Space	0.0	0.0	0.0	0.0	cps
Short Space	0.0	0.0	0.0	0.0	cps
Measured Rho		0.0000	0.0000	0.0000	g/cc
Measured Correction		0.0000	0.0000	0.0000	g/cc
Measured Pe			0.0000	0.0000	

Compensated Neutron Calibration Report

Serial Number: 070808
Tool Model: Probe

PRE-SURVEY VERIFICATION

Detector	Readings	Measured	Target
Short Space	cps		
Long Space	cps	pu	pu

POST-SURVEY VERIFICATION

Detector	Readings	Measured	Target
Short Space	cps		
Long Space	cps	pu	pu

Gamma Ray Calibration Report

Serial Number: 070558
Tool Model: OPEN_GR
Performed: Sat Mar 21 17:40:37 2015

Calibrator Value: 1.0 GAPI

Background Reading: 0.0 cps
Calibrator Reading: 1.0 cps

Sensitivity: 0.2800 GAPI/cps