



MIDWEST SURVEYS
 LOGGING - PERFORATING - CONSULTING SERVICES
 P.O. Box 68, Osawatomie, KS 66064
 913 / 755 - 2128

GAMMA RAY / NEUTRON / CCL

File No. _____

Company **Birk Petroleum**

Well **Fischer No.-17**

Field **Crandall North**

County **Coffey**

State **Kansas**

Location **495' FSL & 825' FEL**

Other Services **Perforate**

Sec. 36
 Permament Datum Twp. 22S Rge. 15E Elevation 1040'
 Log Measured From GL
 Drilling Measured From GL

Date _____ Run Number _____
 Depth Driller 1120.0
 Depth Logger 1099.0
 Bottom Logged Interval 1099.0
 Top Log Interval 20.0
 Fluid Level _____

Type Fluid _____
 Density / Viscosity _____
 Salinity - PPM Cl _____
 Max Recorded Temp _____
 Estimated Cement Top _____
 Equipment No. 102
 Location Osawatomie
 Recorded by Gary Winstead
 Witnessed by Brian Birk

BOREHOLE RECORD	CASINGS RECORD
RUN No.	BIT
One	9.875"
Two	6.25"
TO	FROM
40.0	17.0#
1120.0	2875"
TO	FROM
40.0	17.0#
1111.0	2875"

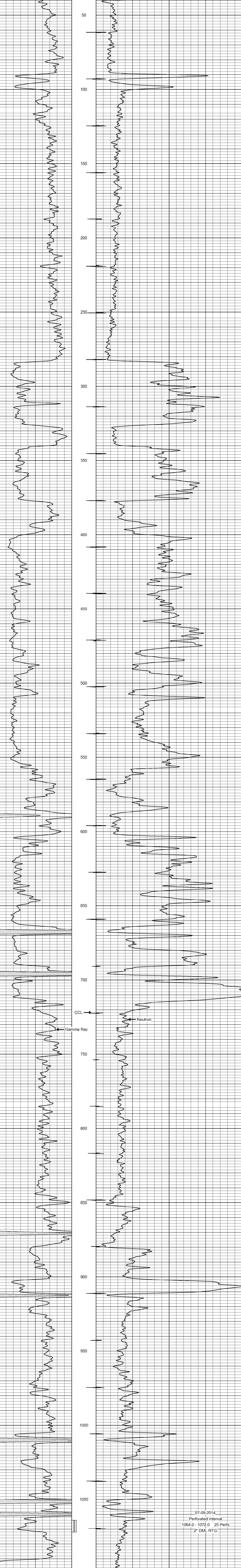
<<< Fold Here >>>

All interpretations are opinions based on inferences from electrical or other measurements and we cannot and do not guarantee the accuracy or correctness of any interpretation, and we shall not, except in the case of gross or willful negligence on our part, be liable or responsible for any loss, costs, damages, or expenses incurred or sustained by anyone resulting from any interpretation made by any of our officers, agents or employees. These interpretations are also subject to our general terms and conditions set out in our current Price Schedule.

Comments

Drilling Contractor :
Birk Petroleum

Database File: fischer17.db
 Dataset Pathname: pass1
 Presentation Format: gr-n-ccl
 Dataset Creation: Wed Jul 09 13:37:55 2014 by Log SCH 111116
 Charted by: Depth in Feet scaled 1:240



07-09-2014
 Perforated Interval
 1064.0 - 1072.0 25 Perfs
 2" DML RTG