



MIDWEST SURVEYS
 LOGGING - PERFORATING - CONSULTING SERVICES
 P.O. Box 68, Osawatomie, KS 66064
 913 / 735 - 2128

GAMMA RAY / NEUTRON / CCL

File No. _____

Company **Birk Petroleum**

Well **Fischer No.-29**

Field **Crandall North**

County **Coffey** State **Kansas**

Location **165' FSL & 2475' FEL**

Other Services **Perforate**

Sec. **36** Twp. **22s** Rge. **15e**

Perforant Datum **GL** Elevation **1047'**

Log Measured From **GL** K.B. NA

Drilling Measured From **GL** D.F. NA

Date **08-05-2014** Elevation **GL 1047'**

Run Number **One**

Depth Driller **1160.0**

Depth Logger **1145.0**

Bottom Logged Interval **1144.0**

Top Log Interval **20.0**

Fluid Level **Full**

Type Fluid **Water**

Density/Viscosity **NA**

Salinity - PPM Cl **NA**

Max Recorded Temp **NA**

Estimated Cement Top **0.0**

Equipment No. **102** Location **Osawatimie**

Recorded By **Gary Windisch**

Witnessed By **Brian Birk**

BORE-HOLE RECORD

NO. BIT FROM TO SIZE WGT. FROM TO

One 9.875" 40.0 1180.0 7.00" 17.0# 0.0 40.0

Two 6.25" 40.0 1153.0 2.875" 6.5# 0.0 1153.0

CASING RECORD

TO

40.0

1153.0

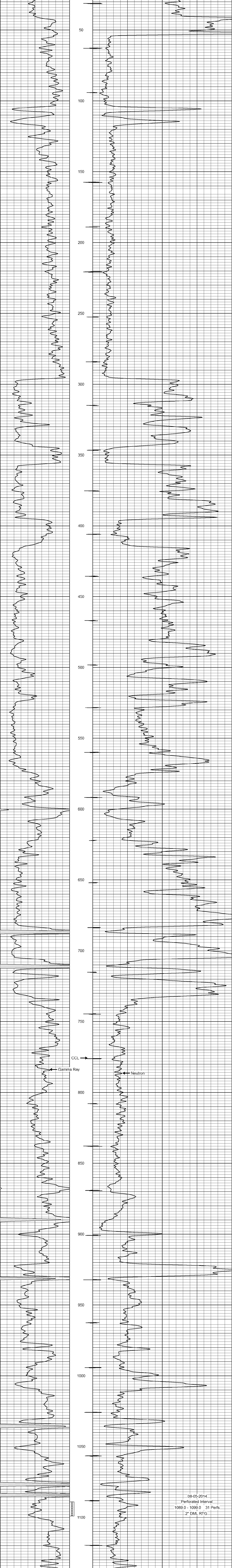
<<< Fold Here >>>

All interpretations are opinions based on inferences from electrical or other measurements and we cannot and do not guarantee the accuracy or correctness of any interpretation, and we shall not, except in the case of gross or willful negligence on our part, be liable or responsible for any loss, costs, damages, or expenses incurred or sustained by anyone resulting from any interpretation made by any of our officers, agents or employees. These interpretations are also subject to our general terms and conditions set out in our current Price Schedule.

Comments

Drilling Contractor :
 Woco Drilling, LLC.

Database File: fischer29.db
 Dataset Pathname: pass1
 Presentation Format: gr-n-ccl
 Dataset Creation: Tue Aug 05 10:15:20 2014 by Log SCH 111116
 Charted by: Depth in Feet scaled 1:240



08-05-2014
 Perforated Interval
 1089.0 - 1099.0 31 Perfs.
 2" DML RTG

0 Gamma Ray (cps) 150
 150 Gamma Ray (cps) 300
 -1 CCL 1
 100 Neutron (cps) 1900