



**COMPLETION
& PRODUCTION
SERVICES CO.**

**MICRO
LOG**

Company LD DRILLING, INC.
Well BETTY #2-12
Field FAUBION
County ROOKS State KANSAS

Company LD DRILLING, INC.
Well BETTY #2-12
Field FAUBION
County ROOKS
State KANSAS

Location: API #: 15-163-24207-00-00
390 FNL & 330 FWL
S2 - NW - NW- NW
SEC 12 TWP 6S RGE 18W
GROUND LEVEL Elevation 1890
Log Measured From KELLY BUSHING 7' A.G.L.
Drilling Measured From KELLY BUSHING
Other Services
CNL/CDL
DIL
Elevation
K.B. 1897
D.F. 1895
G.L. 1890

Date	7/17/14
Run Number	TWO
Depth Driller	3360
Depth Logger	3358
Bottom Logged Interval	3356
Top Log Interval	2700
Casing Driller	8 5/8 @ 365'
Casing Logger	365'
Bit Size	7.875
Type Fluid in Hole	CHEMICAL MUD
Density / Viscosity	9.2/53
pH / Fluid Loss	10.0/7.8
Source of Sample	FLOWLINE
Rm @ Meas. Temp	1.40 @ 85F
Rmf @ Meas. Temp	1.05 @ 85F
Rmc @ Meas. Temp	1.68 @ 85F
Source of Rmf / Rmc	MEASURED
Rm @ BHT	1.08 @ 110F
Time Circulation Stopped	2 HOURS
Time Logger on Bottom	
Maximum Recorded Temperature	110F
Equipment Number	3802
Location	HAYS, KS.
Recorded By	IAN MABB
Witnessed By	LOGAN WALKER

<<< Fold Here >>>

All interpretations are opinions based on inferences from electrical or other measurements and we cannot and do not guarantee the accuracy or correctness of any interpretation, and we shall not, except in the case of gross or willful negligence on our part, be liable or responsible for any loss, costs, damages, or expenses incurred or sustained by anyone resulting from any interpretation made by any of our officers, agents or employees. These interpretations are also subject to our general terms and conditions set out in our current Price Schedule.

Comments

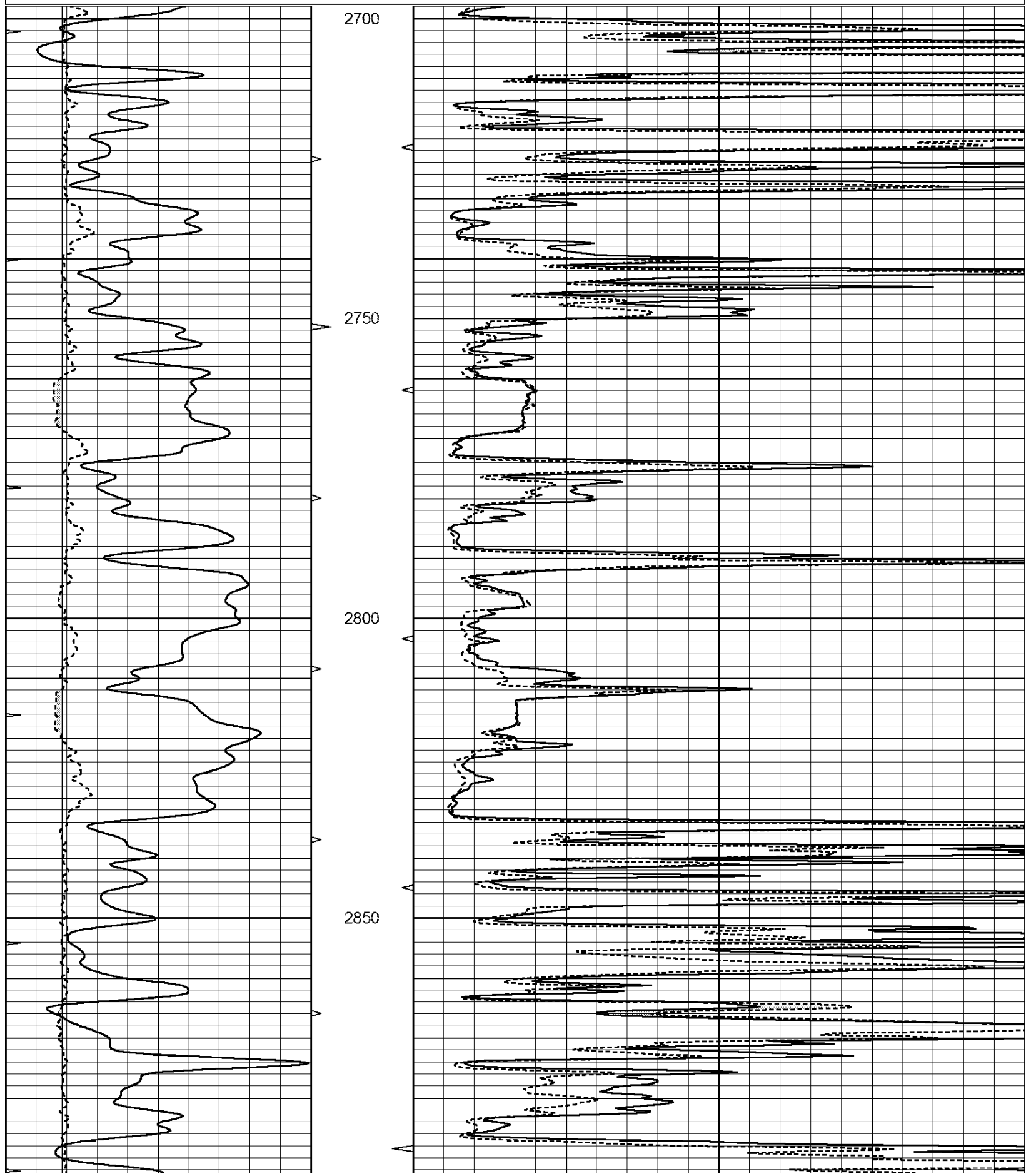
NABORS COMPLETION & PRODUCTION SERVICES CO.
785 (628 - 6395)
THANK YOU FOR YOUR BUSINESS
DIRECTIONS : STOCKTON, KS. - 7 NORTH TO RD B - EAST TO THE TANK BATTERY - SOUTH INTO

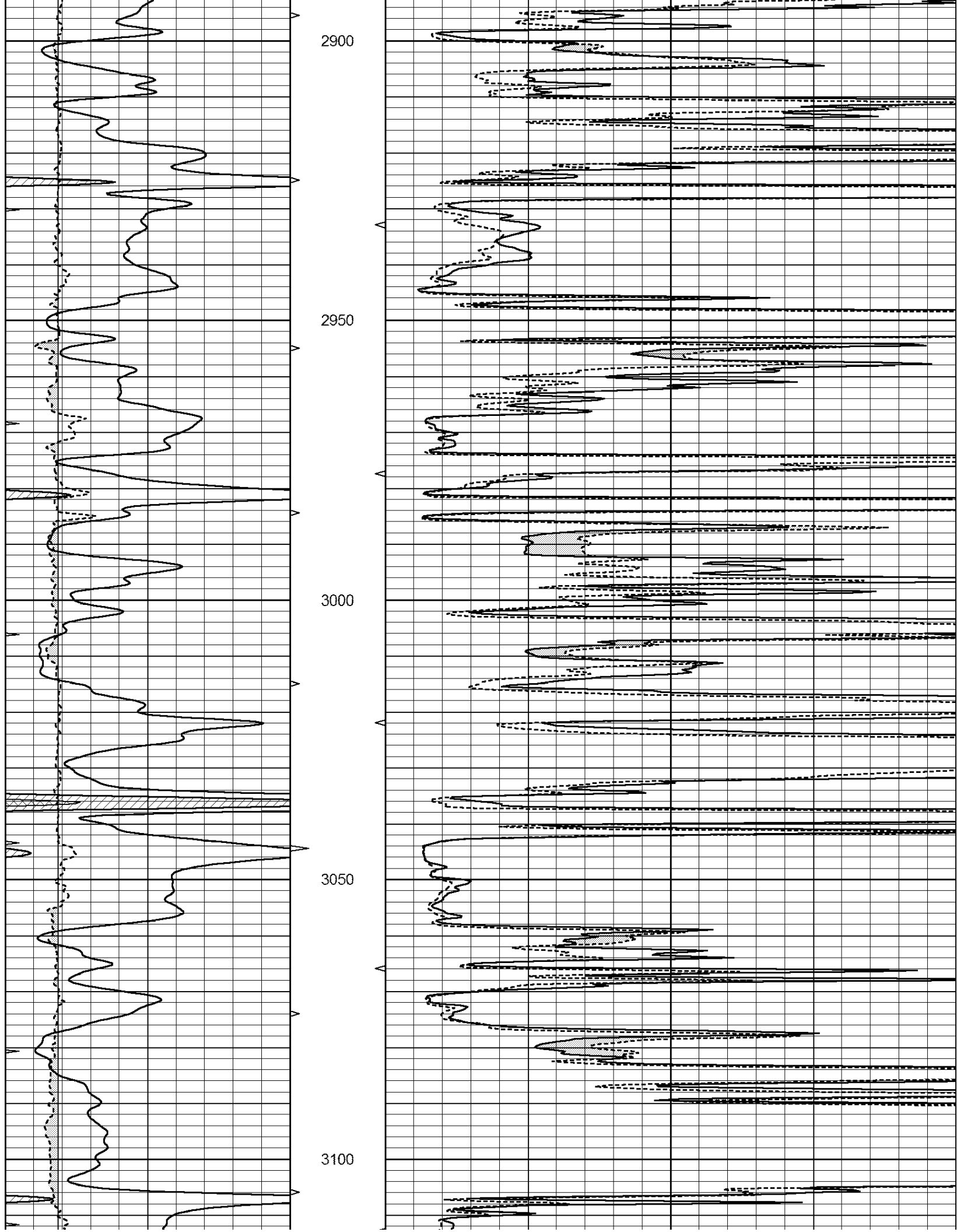
Charted by:

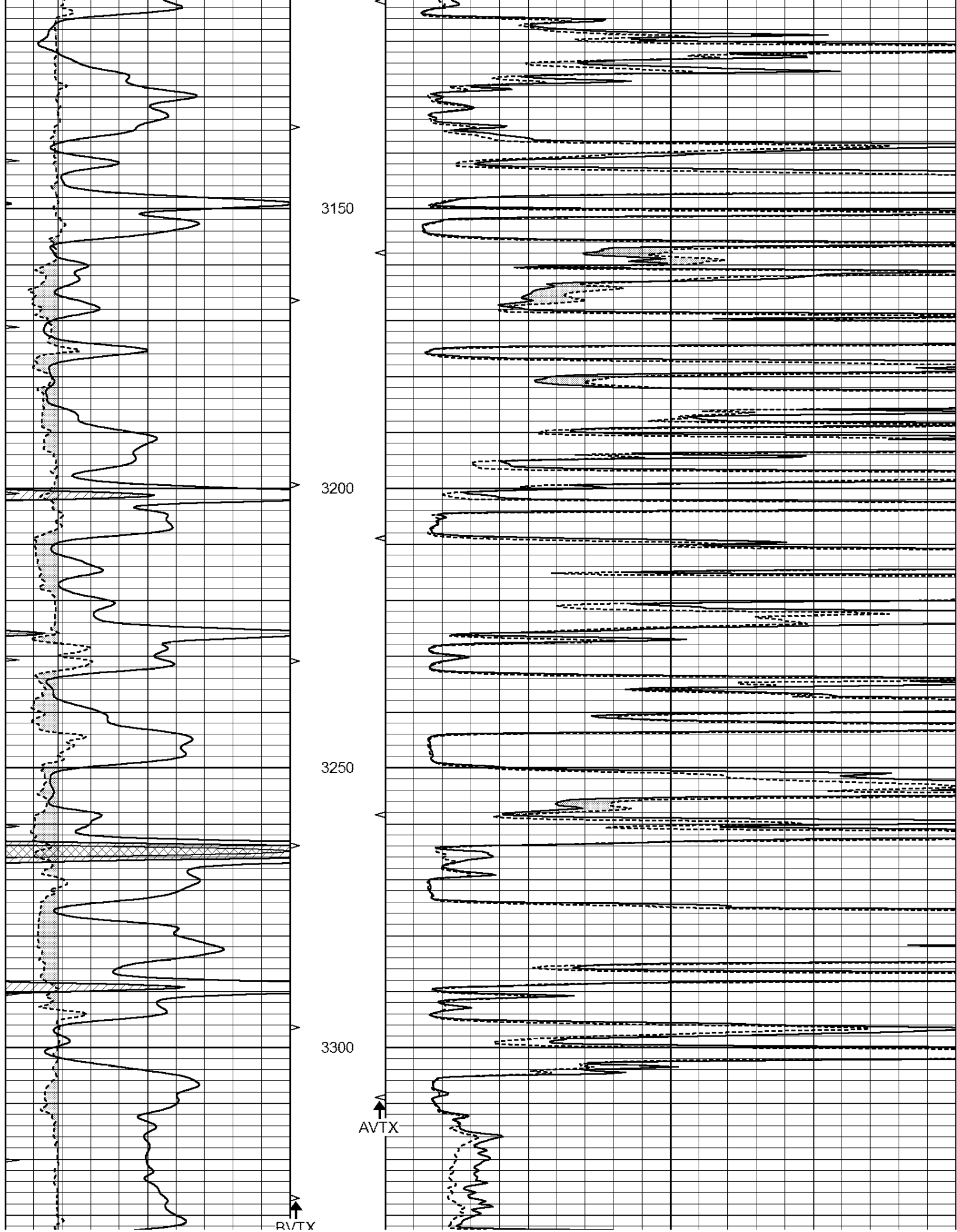
Depth in Feet scaled 1:240

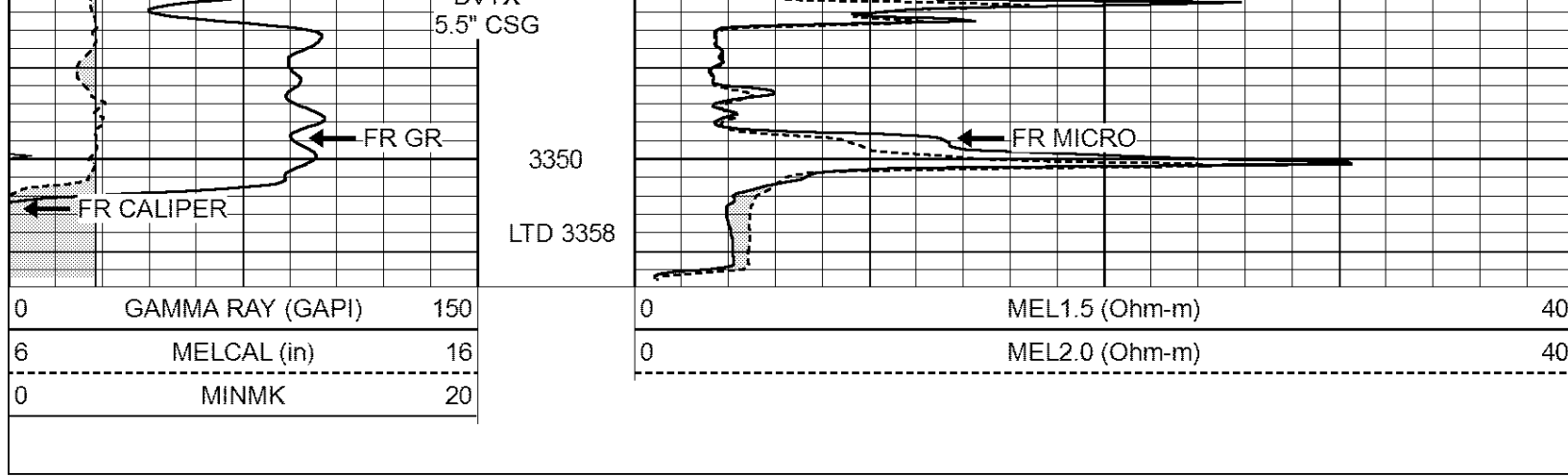
0	GAMMA RAY (GAPI)	150
6	MELCAL (in)	16
0	MINMK	20

0	MEL1.5 (Ohm-m)	40
0	MEL2.0 (Ohm-m)	40



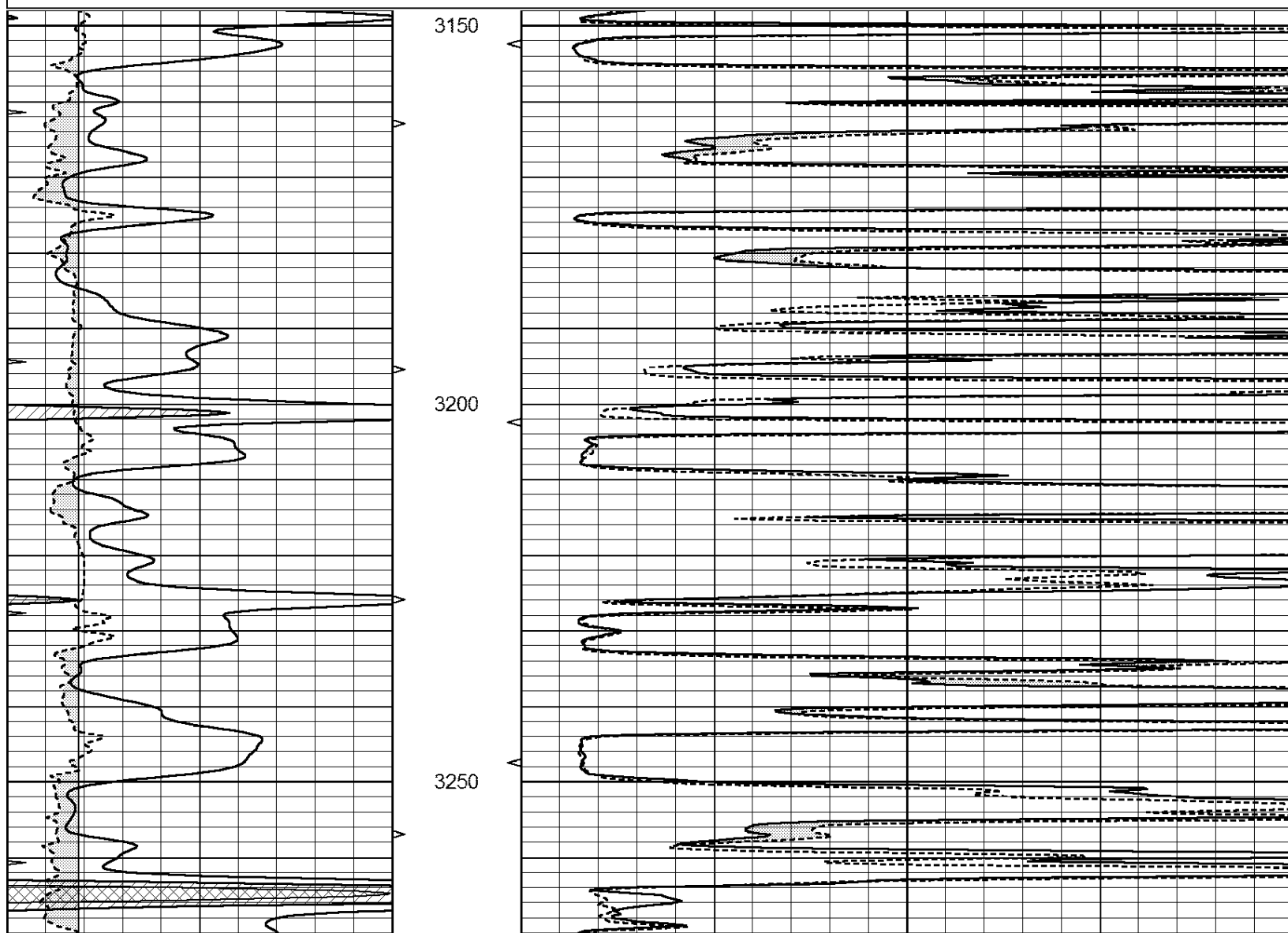


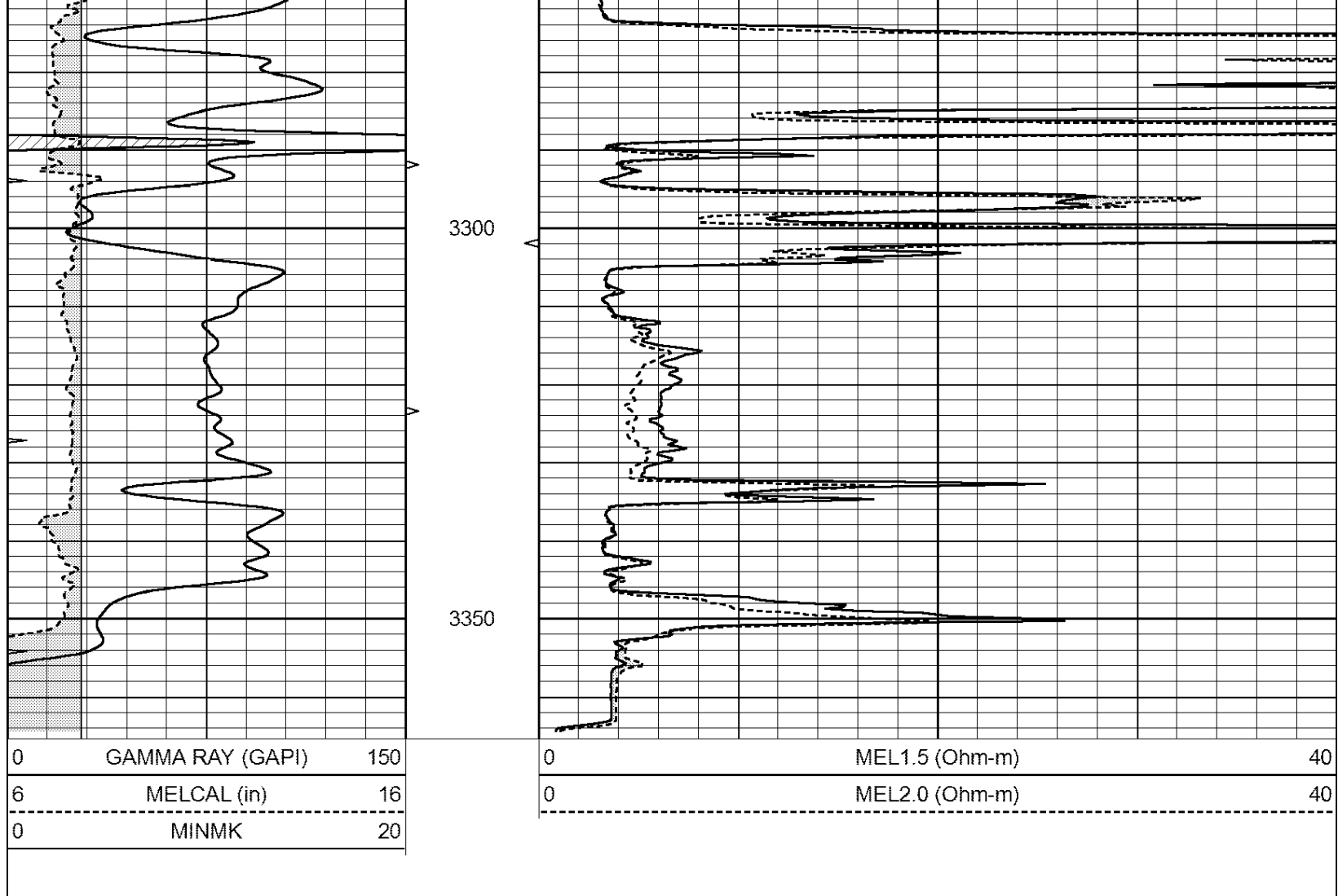




Database File: 24707ddn.db
 Dataset Pathname: pass6.1
 Presentation Format: _micro
 Dataset Creation: Thu Jul 17 16:25:31 2014 by Calc Open-Cased 090629
 Charted by: Depth in Feet scaled 1:240

0	GAMMA RAY (GAPI)	150	0	MEL1.5 (Ohm-m)	40
6	MELCAL (in)	16	0	MEL2.0 (Ohm-m)	40
0	MINMK	20			





Calibration Report

Database File: 24707ddn.db
 Dataset Pathname: pass7.1
 Dataset Creation: Thu Jul 17 16:49:15 2014 by Calc Open-Cased 090629

MICRO Calibration Report

Serial Number:	MICRO5	
Tool Model:	PROBE	
Performed:	Fri Apr 18 23:17:16 2014	
Caliper Calibration:	Gain=3.536	Offset=-5.800
References	Low Cal 6.200	High Cal 15.000
Readings	3.737	5.660
1.5" Calibration:	Gain=20.334	Offset=0.850
References	Low Cal 0.000	High Cal 20.000
Readings	0.025	1.009
2" Calibration:	Gain=25.398	Offset=1.000
References	Low Cal 0.000	High Cal 20.000
Readings	0.014	0.802

Gamma Ray Calibration Report

Serial Number: GR2
Tool Model: OPEN
Performed: Sun May 11 11:08:27 2014

Calibrator Value: 200.0 GAPI

Background Reading: 0.0 cps

Calibrator Reading: 740.0 cps

Sensitivity: 0.3500 GAPI/cps