

Company **DOMESTIC ENERGY PARTNERS, LLC.**
Well **BRAMAN #1-1**
Field **BUFFALO**

County **WILSON** State **KANSAS**
Location: **39° FN, 8.69° FEU**
E/2 NE NE NE 15E
API #: **15-205-28244-00-00** Other Services

Company **DOMESTIC ENERGY**
Well **BRAMAN #1-1**
Field **BUFFALO**
County **WILSON** State **KANSAS**
Location: **39° FN, 8.69° FEU**
E/2 NE NE NE 15E
API #: **15-205-28244-00-00** Other Services

Permanant Datum **GL** Elevation **8835ST**
Log Measured From **GL** Elevation **8835ST**
Drilling Measured From **GL** Elevation **8835ST**

Run Number **1 NW**
Depth Driver **1307**
Depth Logger **1284.2**
Top Log Interval **0**
Bottom Logged Interval **1284.2**
Fluid Level **FULL**

Type Fluid **WATER**
Production Casing **4.5" @ TD**
Max. Recorded Temp. **@**
Estimated Cement Top **@**
Calculated Cement Top **@**
Amount & Type Cement **@**
Drilling Contractor **103**
Equipment Number **103**
Location **SCOUNION, B**
Measured By **WEBB, T.**

Company **DOMESTIC ENERGY**
Well **BRAMAN #1-1**
Field **BUFFALO**
County **WILSON** State **KANSAS**
Location: **39° FN, 8.69° FEU**
E/2 NE NE NE 15E
API #: **15-205-28244-00-00** Other Services

Permanant Datum **GL** Elevation **8835ST**
Log Measured From **GL** Elevation **8835ST**
Drilling Measured From **GL** Elevation **8835ST**

Run Number **1 NW**
Depth Driver **1307**
Depth Logger **1284.2**
Top Log Interval **0**
Bottom Logged Interval **1284.2**
Fluid Level **FULL**

<<< Fold Here >>>

All interpretations are opinions based on inferences from electrical or other measurements and we cannot and do not guarantee the accuracy or correctness of any interpretation, and we shall not, except in the case of gross or willful negligence on our part, be liable or responsible for any loss, costs, damages, or expenses incurred or sustained by anyone resulting from any interpretation made by any of our officers, agents or employees. These interpretations are also subject to our general terms and conditions set out in our current Price Schedule.

Comments

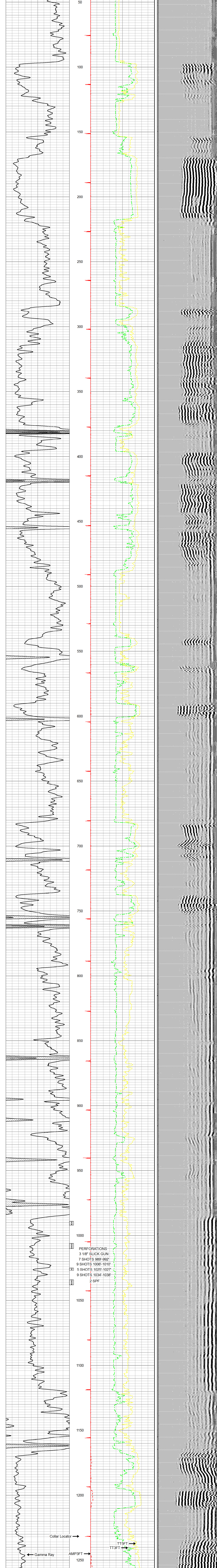
THANK YOU

| Sensor | Offset (ft) | Schematic | Description | Len (ft) | OD (in) | Wt (lb) |
|---------|-------------|-----------|---|----------|---------|---------|
| | | | tekco tekco cent. | 2.17 | 1.69 | 5.00 |
| WVF3FT | 6.58 | | CBLTEKCO-TEKCO2RCVR (TEKCO169) 1 11/16" TEKCO 2 RCVR DELWARE | 9.75 | 1.69 | 50.00 |
| WVF5FT | 5.58 | | | | | |
| WVFCAL | 2.17 | | | | | |
| WVFSYNC | 2.17 | | | | | |

Dataset: braman #1-1.db; field/well/run1/pass2MERGE
Total Length: 14.08 ft
Total Weight: 60.00 lb
O.D.: 1.69 in

Database File: e:\braman #1-1.db
Dataset Pathname: pass2MERGE
Presentation Format: scbl_dr
Dataset Creation: Wed Mar 19 12:06:08 2014
Charted by: Depth in Feet scaled 1:240

0 Gamma Ray 150 Collar Locator 0 AMP3FT (mV) 200 200 VDL 1200
150 gr 300 9 0 1100 TT3FT (usec) 200
1800 TT5FT (usec) 200



0 Gamma Ray 150 Collar Locator 0 AMP3FT (mV) 200 200 VDL 1200
150 gr 300 9 0 1100 TT3FT (usec) 200
1800 TT5FT (usec) 200