



Pioneer Energy Services

Microresistivity Log

15-055-22,269-00-00

API No.

Company **Palmer Oil, Inc.**
 Well **Brookover #8-5**
 Field **Staley Northwest**
 County **Finney** State **Kansas**

Location
 NW-SE-NE-NW
 925' FNL & 2045' FWL

Sec: **8** Twp: **25S** Rge: **32W**

Other Services
 CNL/CDL
 DIL/BHCS

Permanent Datum Ground Level Elevation 2888
 Log Measured From Kelly Bushing 11 Ft. Above Perm. Datum
 Drilling Measured From Kelly Bushing

Elevation
 K.B. 2899
 D.F. 2888
 G.L. 2888

Date	2/17/2014
Run Number	Two
Depth Driller	5000
Depth Logger	4999
Bottom Logged Interval	4998
Top Log Interval	3800
Casing Driller	8.625 @ 1750
Casing Logger	1746
Bit Size	7.875
Type Fluid in Hole	Chemical
Salinity, ppm CL	3,100
Density / Viscosity	9.2 50
pH / Fluid Loss	11.0 6.4
Source of Sample	Flowline
Rm @ Meas. Temp	1.2 @ 67
Rmf @ Meas. Temp	.90 @ 67
Rmc @ Meas. Temp	1.62 @ 67
Source of Rmf / Rmc	Charts
Rm @ BHT	.64 @ 126
Operating Rig Time	5 Hours
Max Rec. Temp. F	126
Equipment Number	108
Location	Hays
Recorded By	J. Hennickson
Witnessed By	Kevin Timson

<<< Fold Here >>>

All interpretations are opinions based on inferences from electrical or other measurements and we cannot and do not guarantee the accuracy or correctness of any interpretation, and we shall not, except in the case of gross or willful negligence on our part, be liable or responsible for any loss, costs, damages, or expenses incurred or sustained by anyone resulting from any interpretation made by any of our officers, agents or employees. These interpretations are also subject to our general terms and conditions set out in our current Price Schedule.

Comments

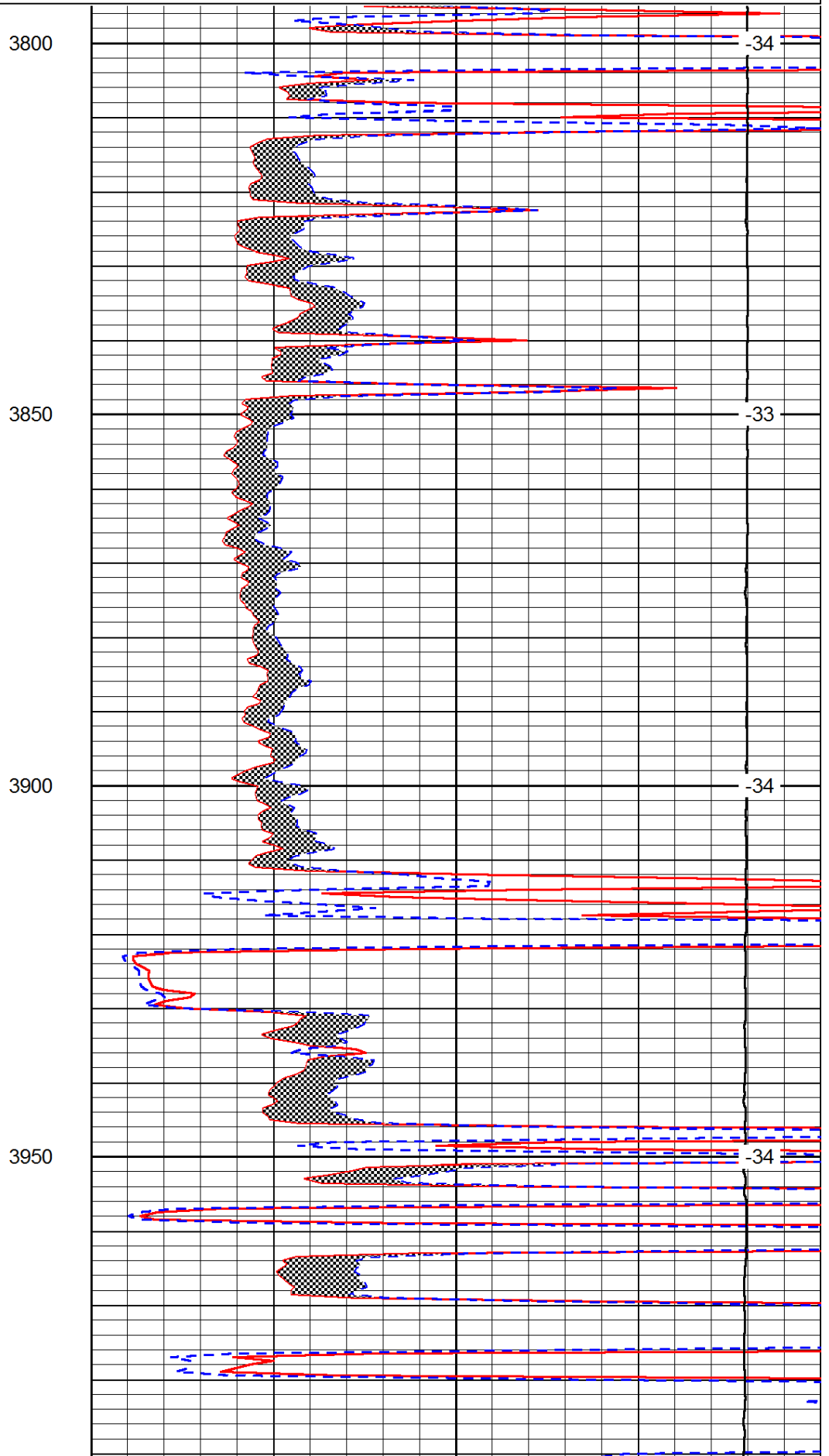
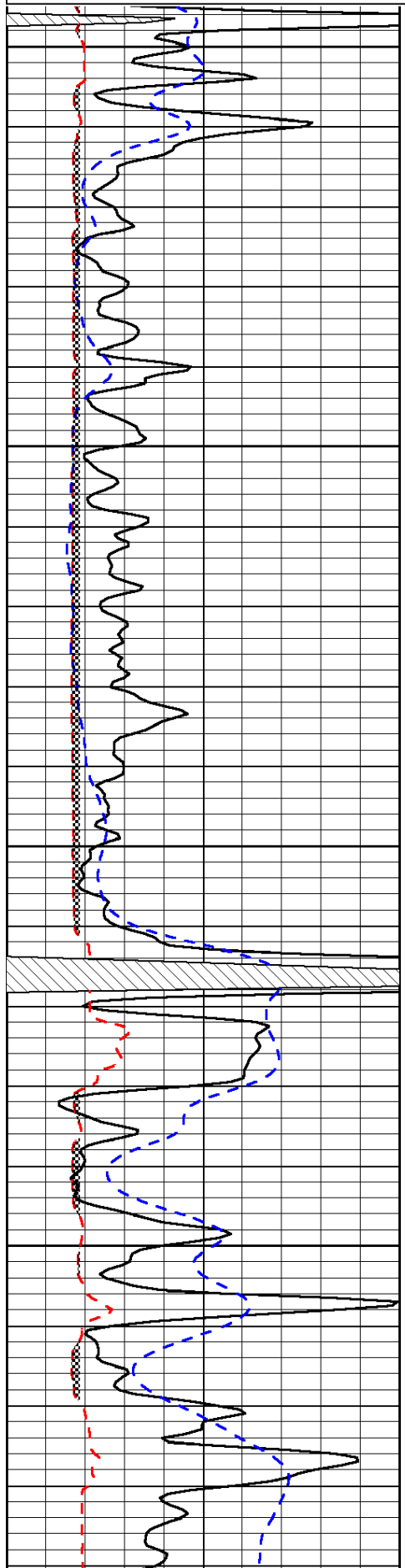
Thank you for using Pioneer Energy Services
 www.pioneerres.com
 785 625 3858
 Garden City Kansas
 South on HWY 83 to Brookover Ranch Rd, 1 South, East Into

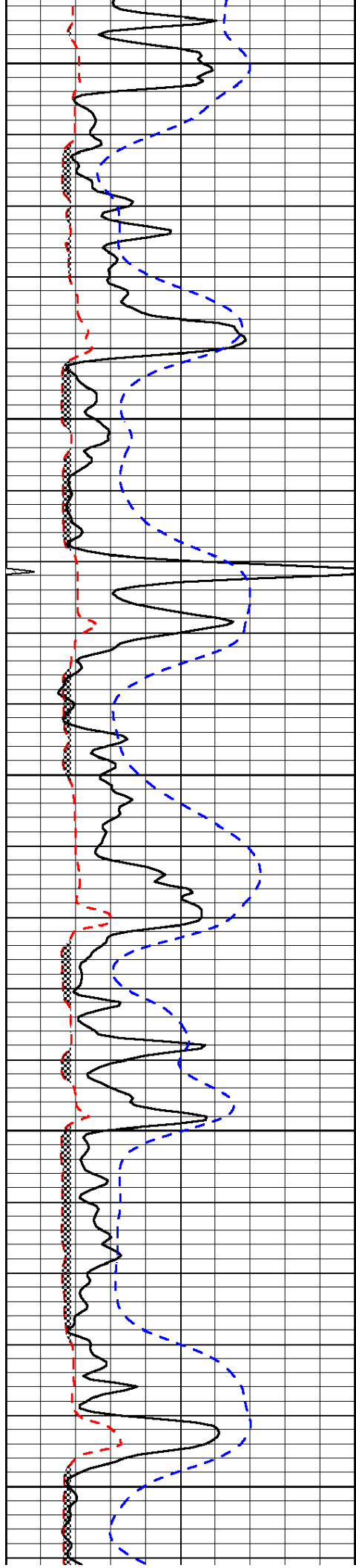
Database File: c:\warrior\data\palmer_brookover #8-5\palmer_brookover_8_5hd.db
 Dataset Pathname: DIL\palmstk
 Presentation Format: micro
 Dataset Creation: Mon Feb 17 11:44:31 2014
 Charted by: Depth in Feet scaled 1:240

0	Gamma Ray	150
6	Micro Log Caliper (GAPI)	16
-200	SP (mV)	0

0	Micro Inverse 1 X 1	40
0	Micro Normal 2"	40
15000	Line Weight	0

LSPD





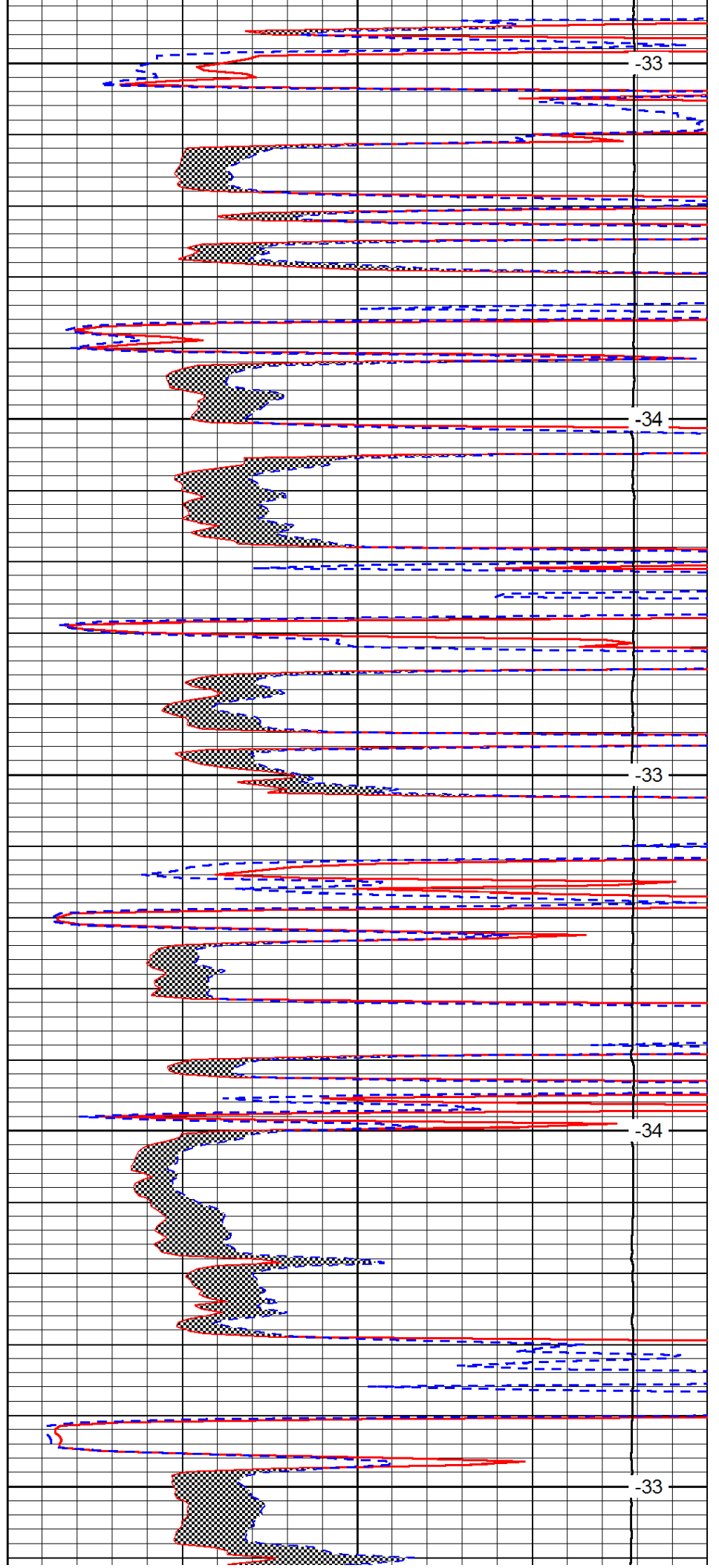
4000

4050

4100

4150

4200



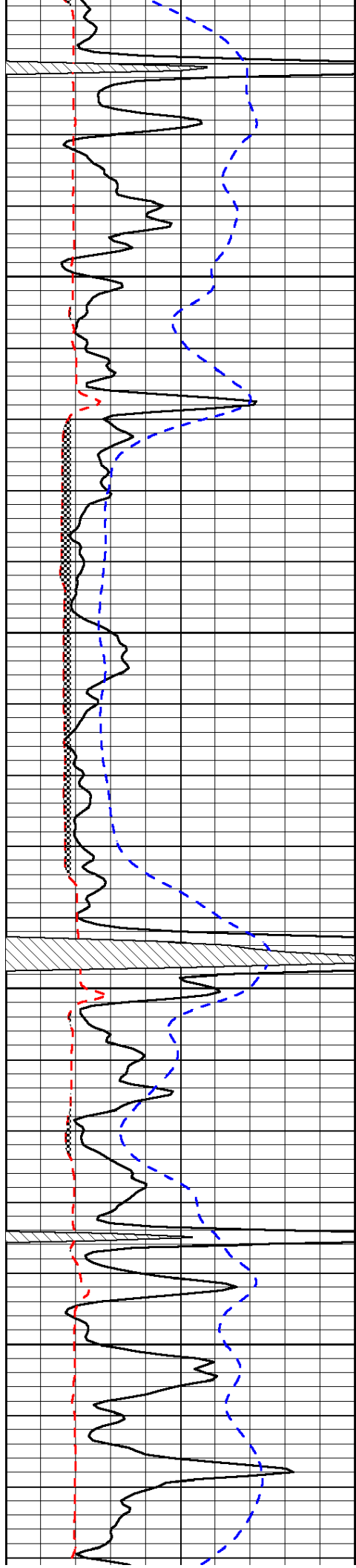
-33

-34

-33

-34

-33

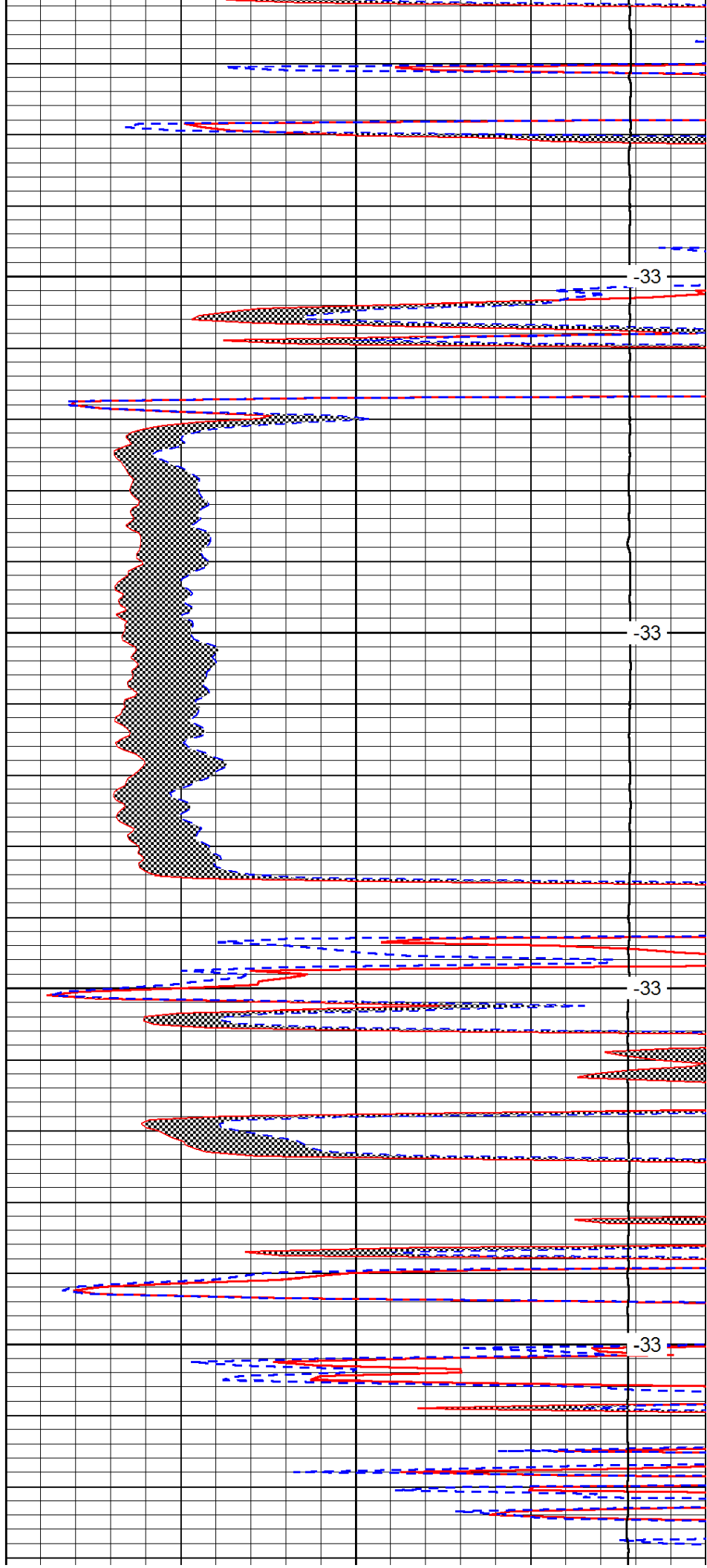


4250

4300

4350

4400

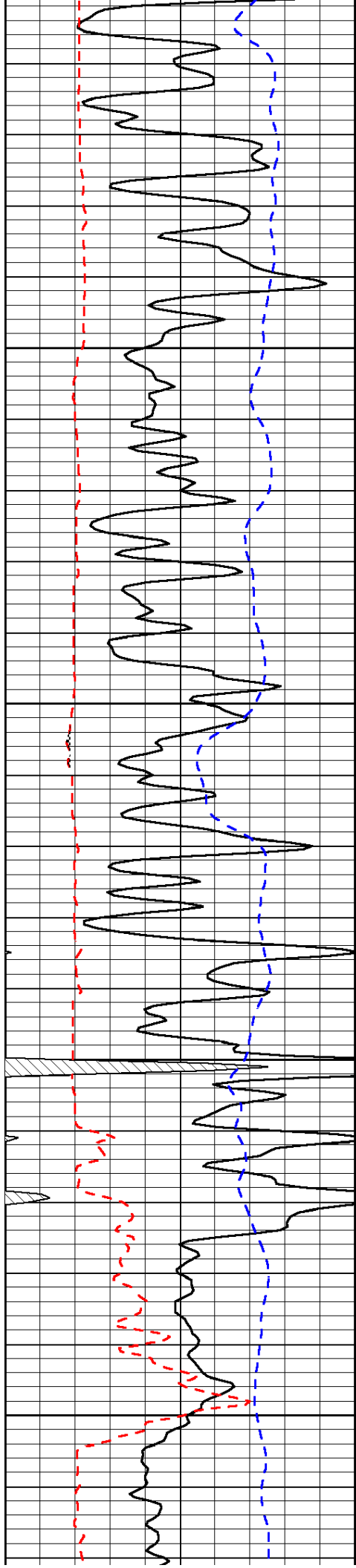


-33

-33

-33

-33

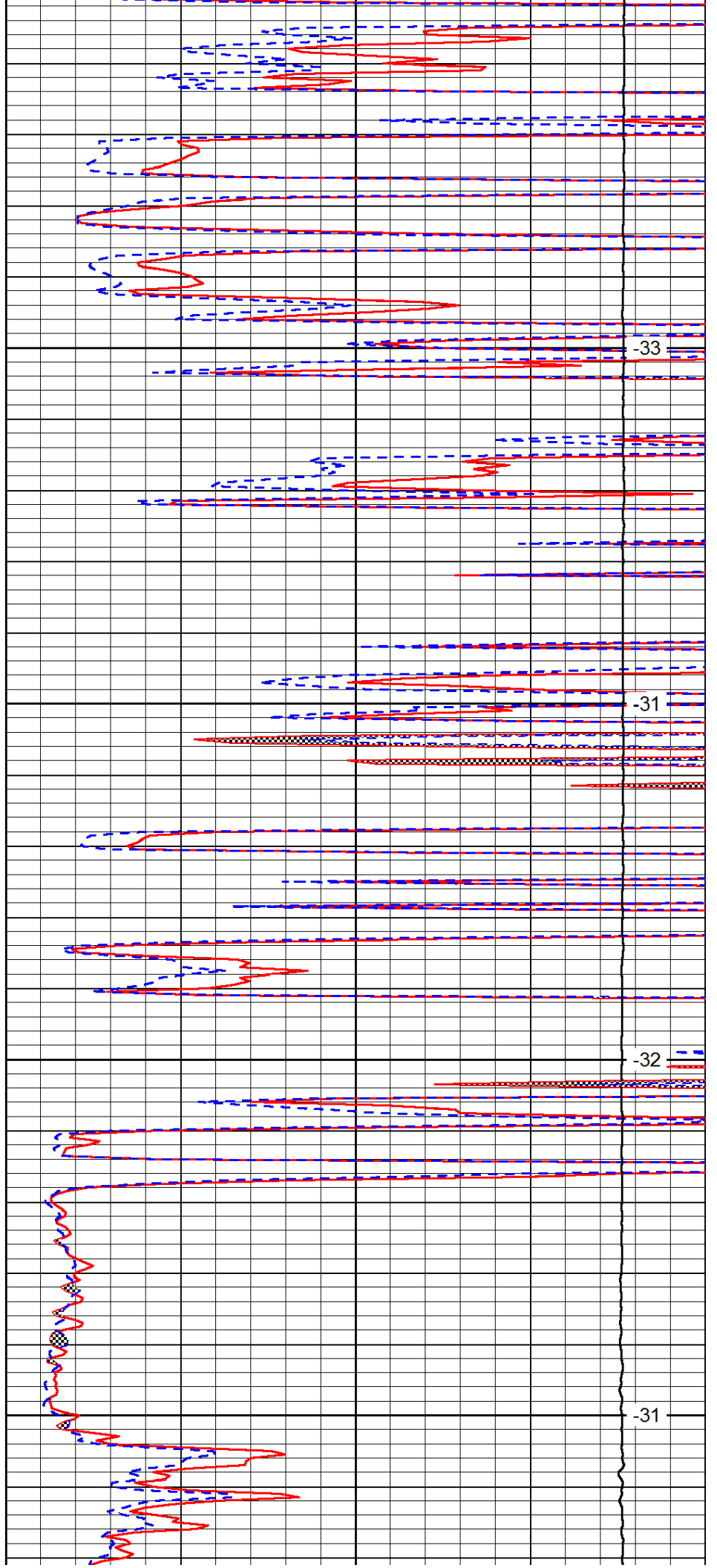


4700

4750

4800

4850

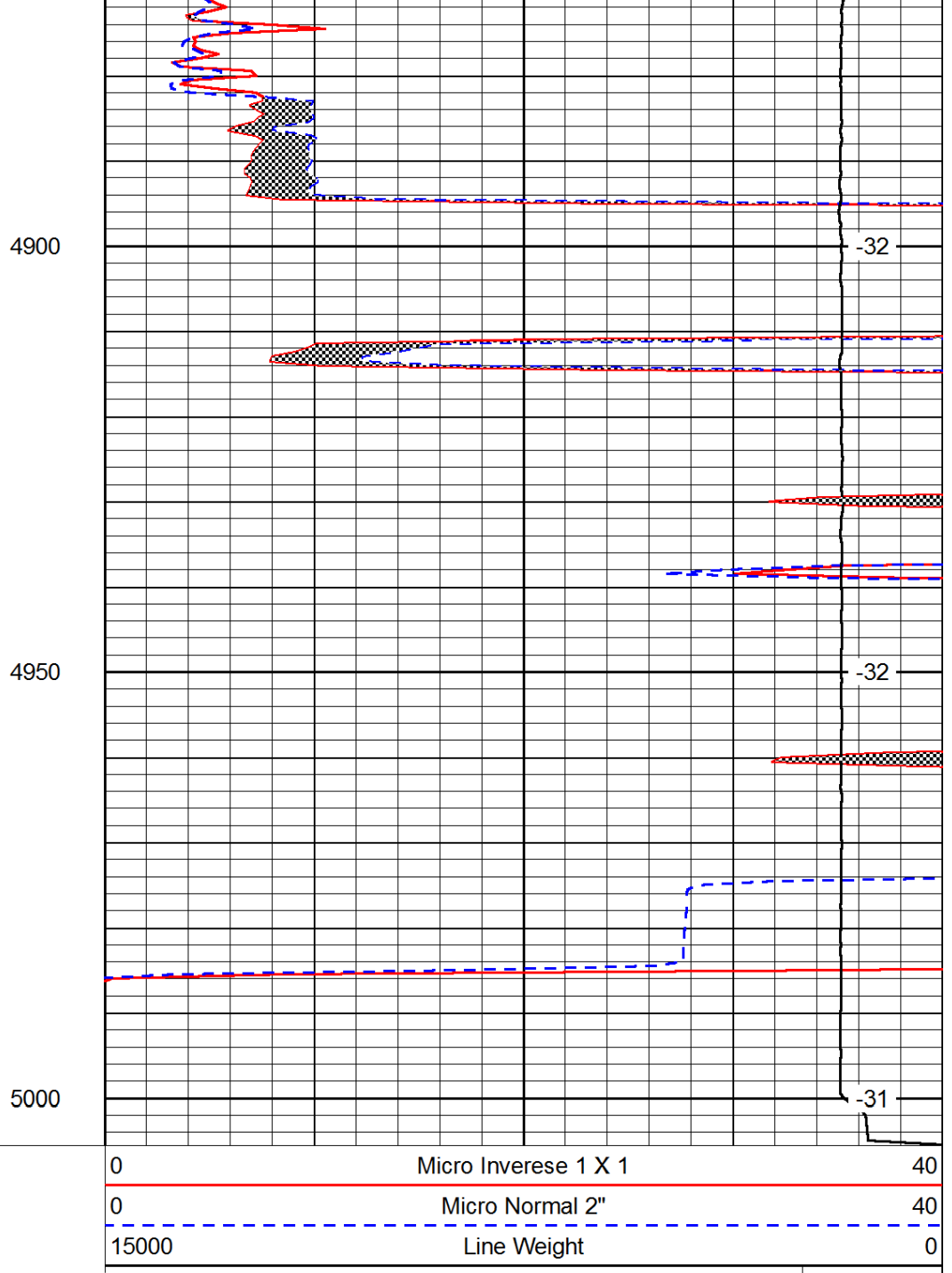
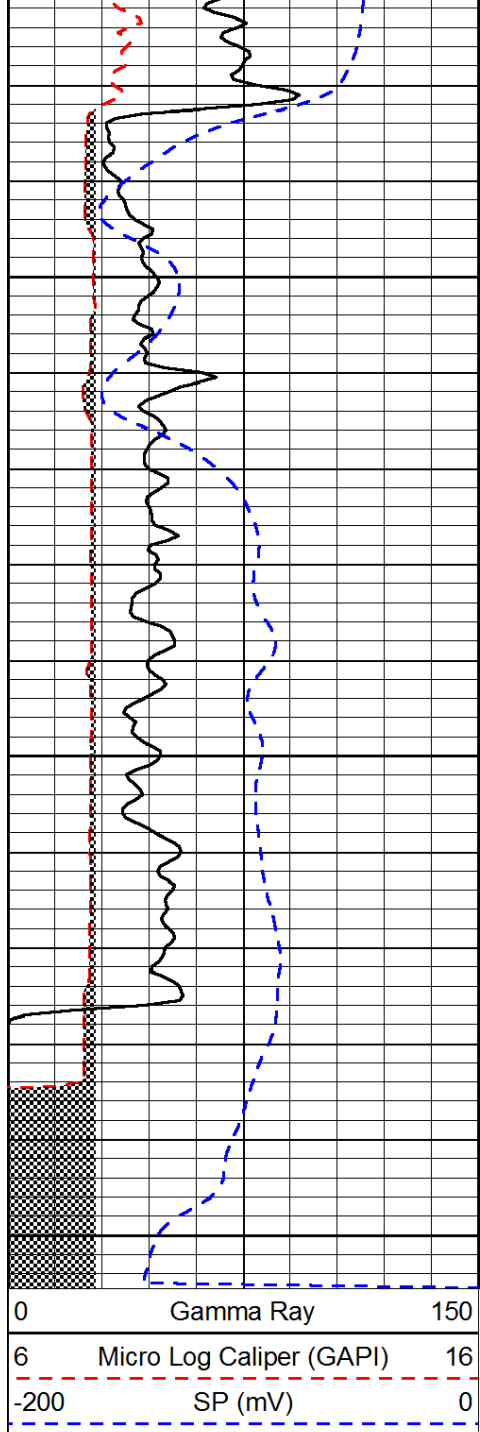


-33

-31

-32

-31



LSPD