



Pioneer Energy Services

Dual Compensated Porosity Log

15-055-22,269-00-00

API No.	Company	Palmer Oil, Inc.	
	Well	Brookover #8-5	
	Field	Staley Northwest	
	County	Finney	State Kansas
	Location	NW-SE-NE-NW 925' FNL & 2045' FWL	
	Sec: 8	Twp: 25S	Rge: 32W
	Permanent Datum	Ground Level	Elevation 2888
	Log Measured From	Kelly Bushing	11 Ft. Above Perm. Datum
	Drilling Measured From	Kelly Bushing	
	Date	2/17/2014	
	Run Number	One	
	Type Log	CNL / CDL	
	Depth Driller	5000	
	Depth Logger	4999	
	Bottom Logged Interval	4978	
	Top Logged Interval	3800	
	Type Fluid In Hole	Chemical	
	Salinity, PPM CL	3,100	
	Density	9.2	
	Level	Full	
	Max. Rec. Temp. F	126	
	Operating Rig Time	5 Hours	
	Equipment -- Location	108 Hays	
	Recorded By	J. Henrickson	
	Witnessed By	Kevin Timson	

Other Services
DIL
MEL/BHCS

Elevation
K.B. 2899
D.F.
G.L. 2888

Borehole Record

Run No.	Bit	From	To	Size	Wgt.	From	To
1	12.25	00	1750	8.625	24#	00	1750
2	7.875	1750	5000				

Casing Record

Run No.	Bit	From	To	Size	Wgt.	From	To

<<< Fold Here >>>

All interpretations are opinions based on inferences from electrical or other measurements and we cannot and do not guarantee the accuracy or correctness of any interpretation, and we shall not, except in the case of gross or willful negligence on our part, be liable or responsible for any loss, costs, damages, or expenses incurred or sustained by anyone resulting from any interpretation made by any of our officers, agents or employees. These interpretations are also subject to our general terms and conditions set out in our current Price Schedule.

Comments

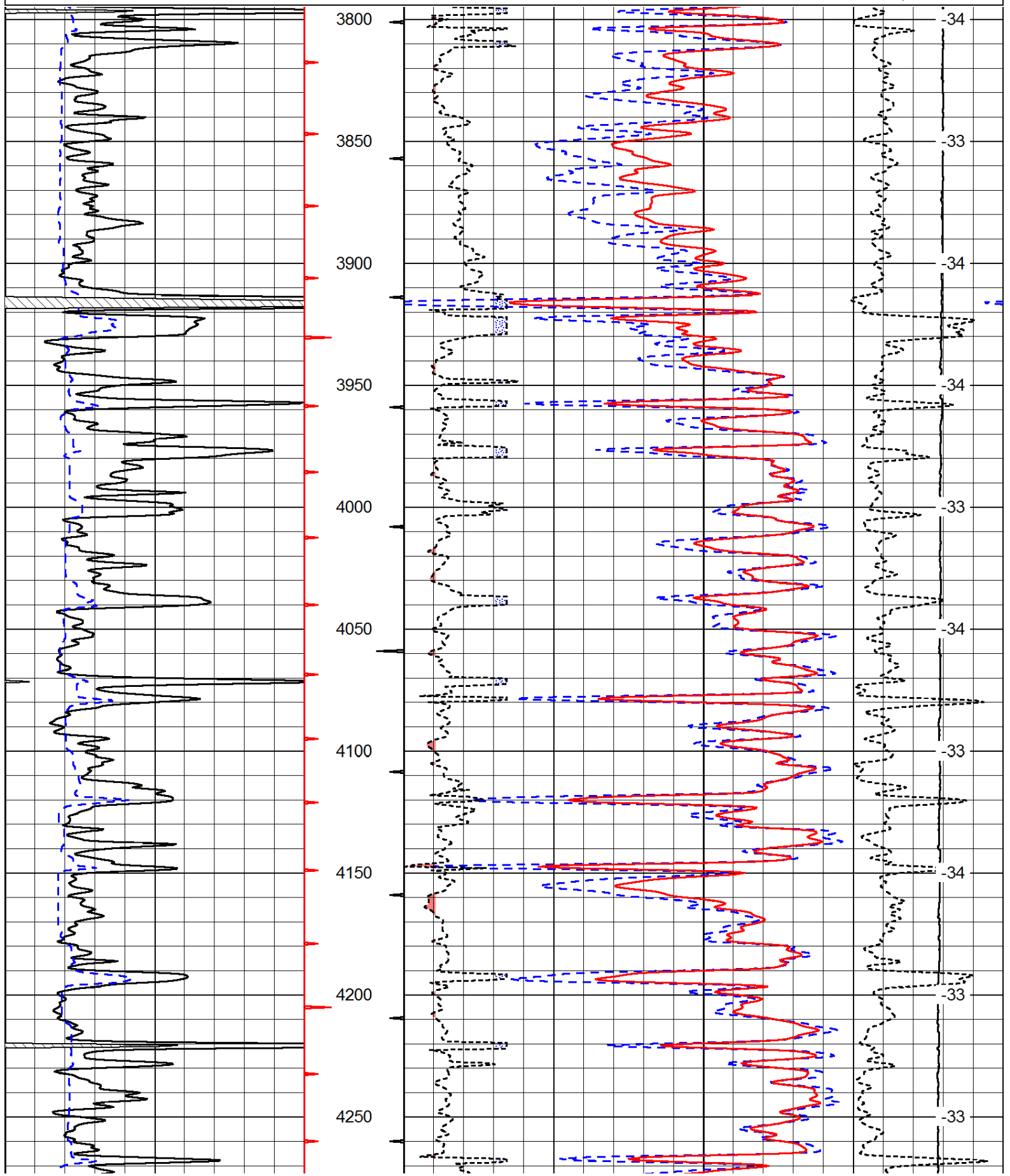
Thank you for using Pioneer Energy Services
www.pioneerenergy.com
 785 625 3858

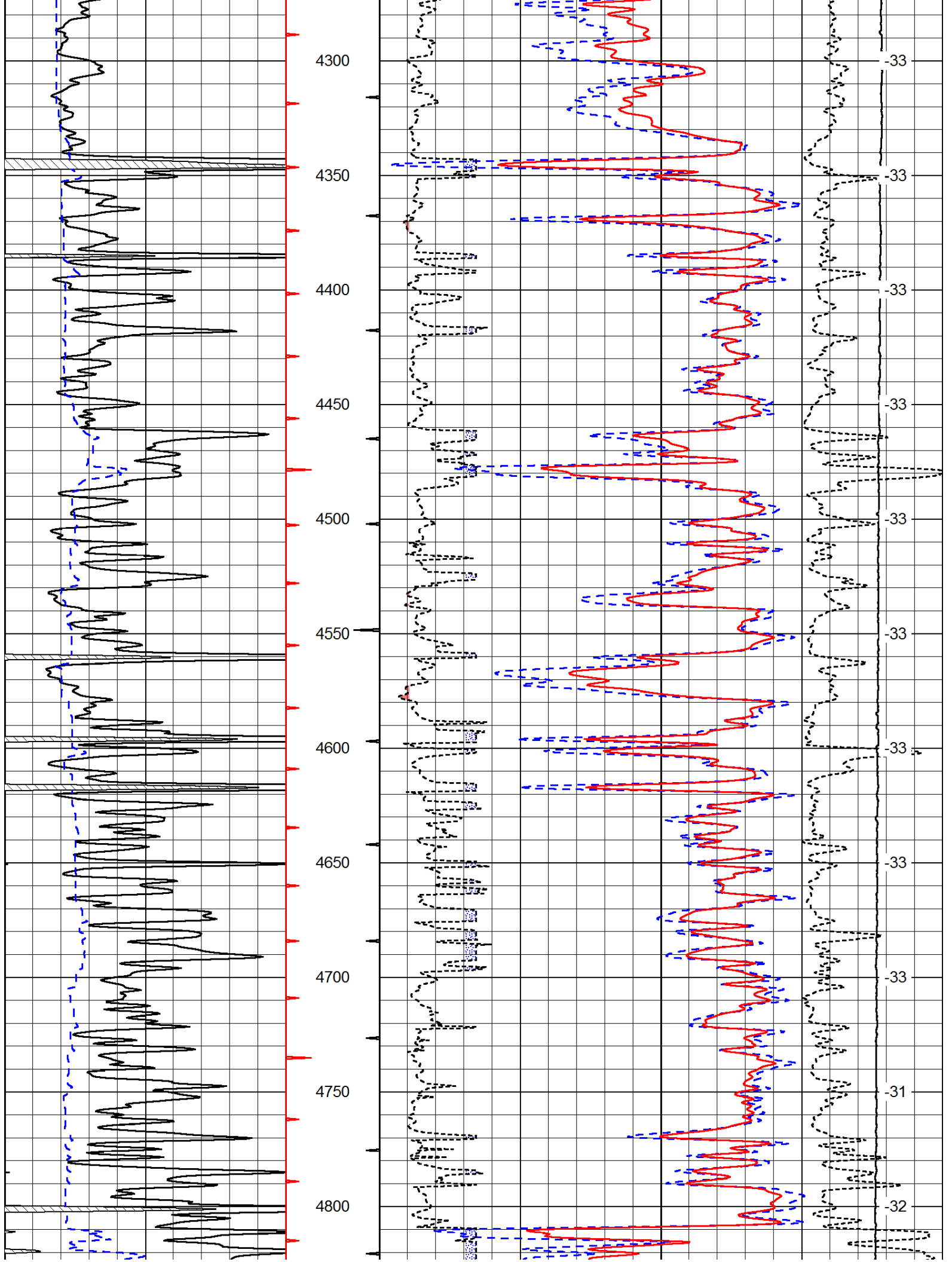
 Garden City Kansas
 South on HWY 83 to Brookover Ranch Rd, 1 South, East Into

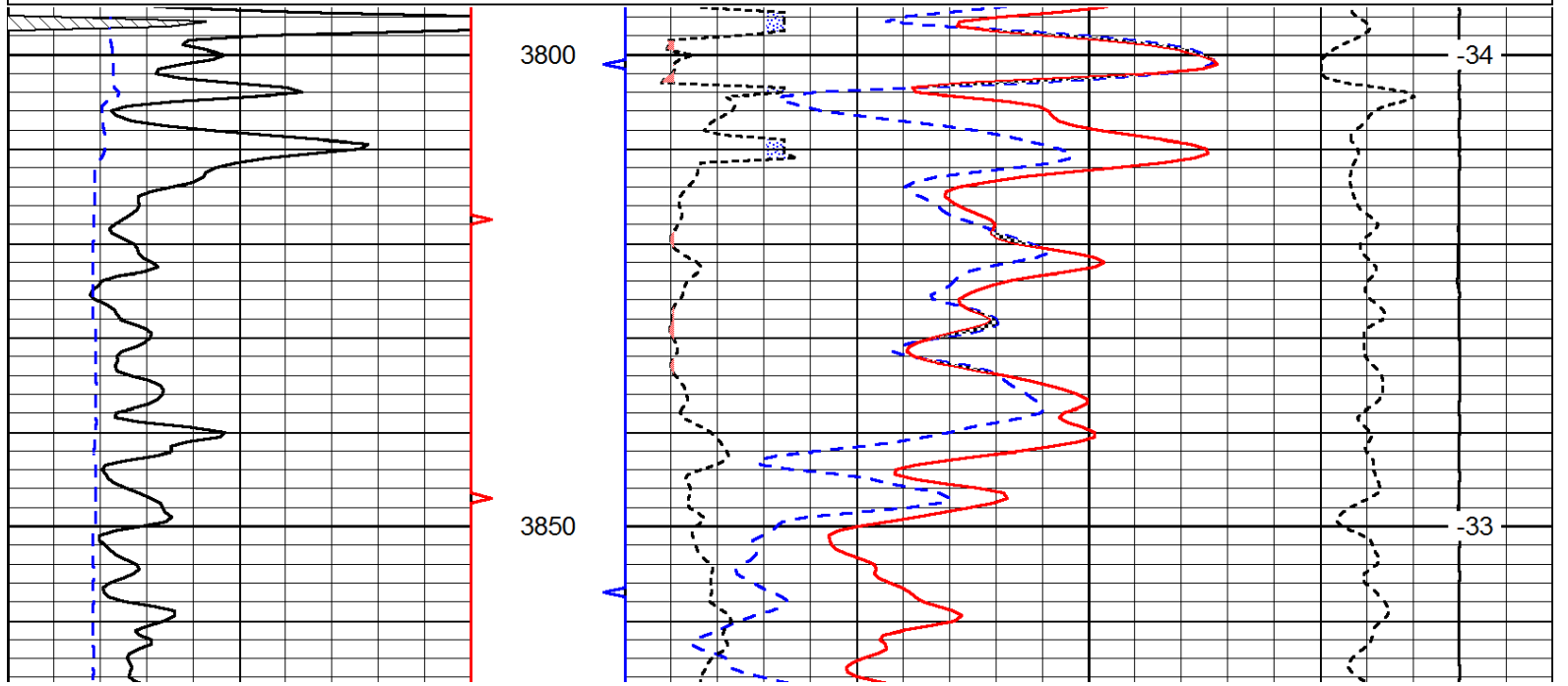
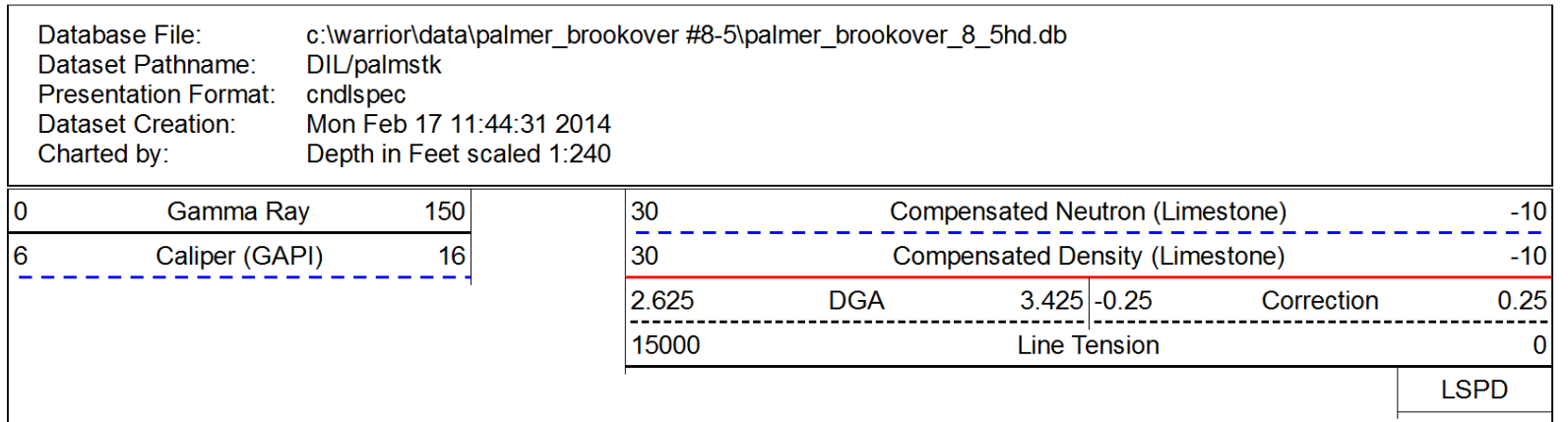
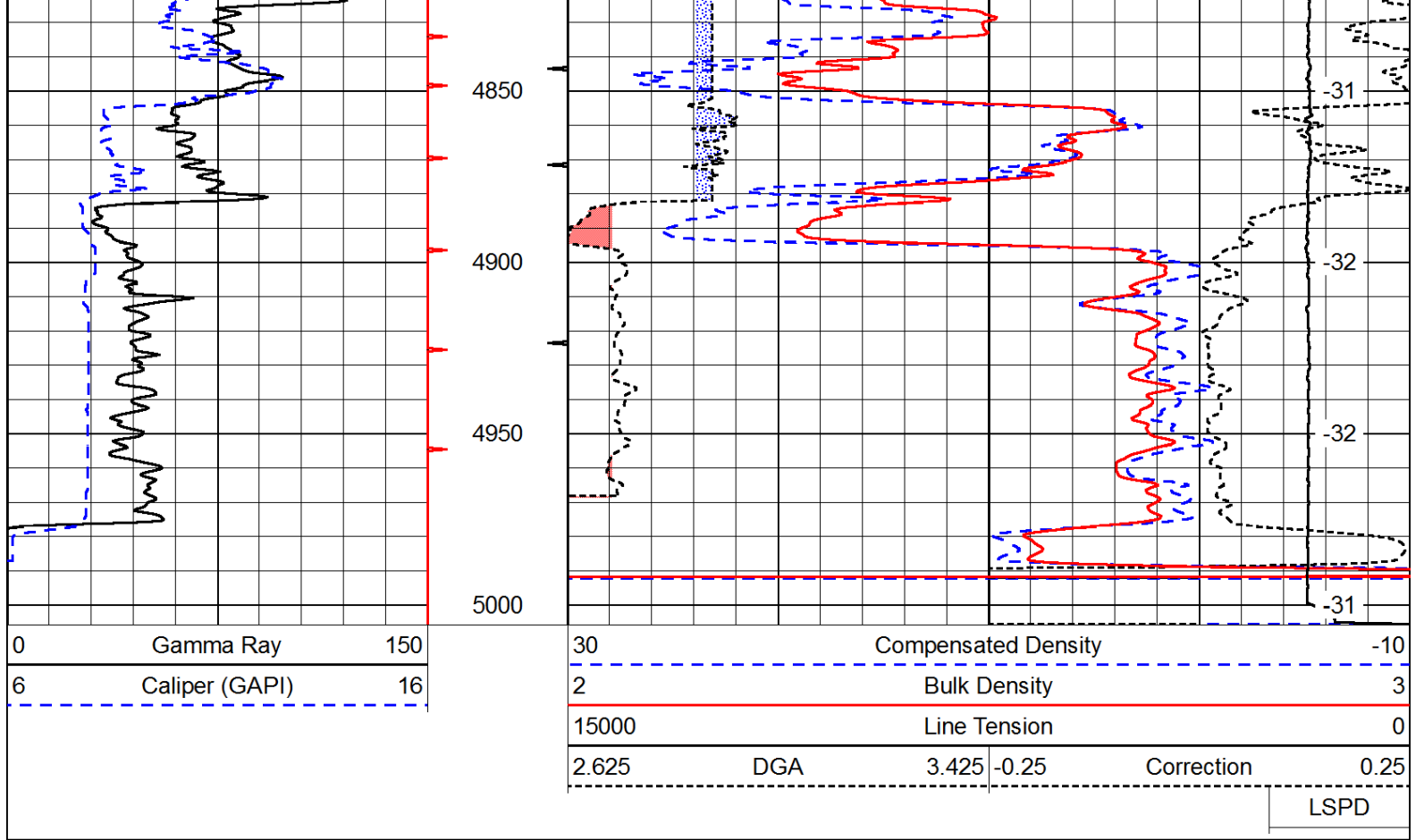
Database File: c:\warrior\data\palmer_brookover #8-5\palmer_brookover_8_5hd.db
 Dataset Pathname: DIL\palmstk
 Presentation Format: cdl
 Dataset Creation: Mon Feb 17 11:44:31 2014
 Charted by: Depth in Feet scaled 1:600

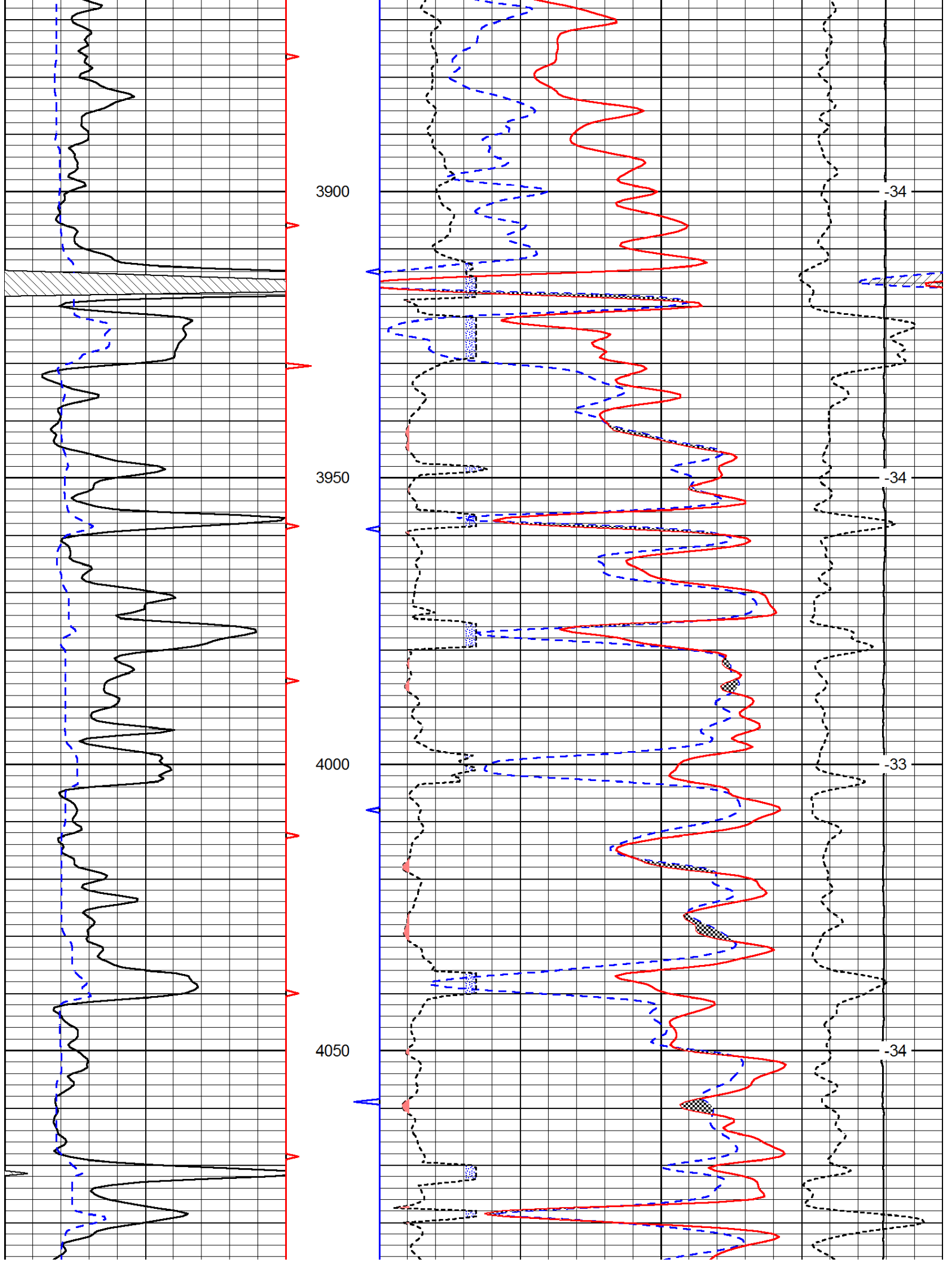
0	Gamma Ray	150
6	Caliper (GAPI)	16

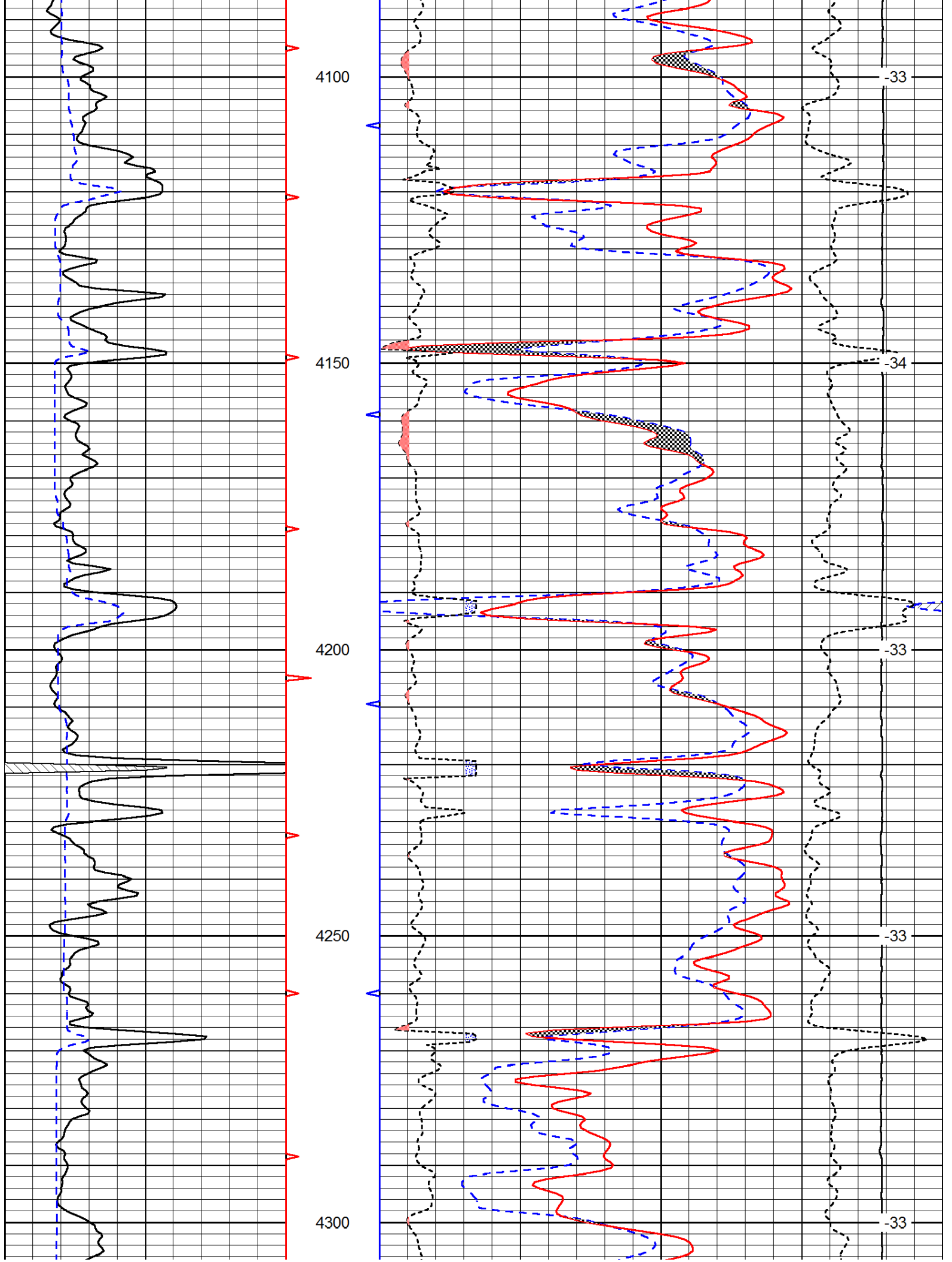
30	Compensated Density		-10
2	Bulk Density		3
15000	Line Tension		0
2.625	DGA	3.425 -0.25	Correction 0.25
LSPD			

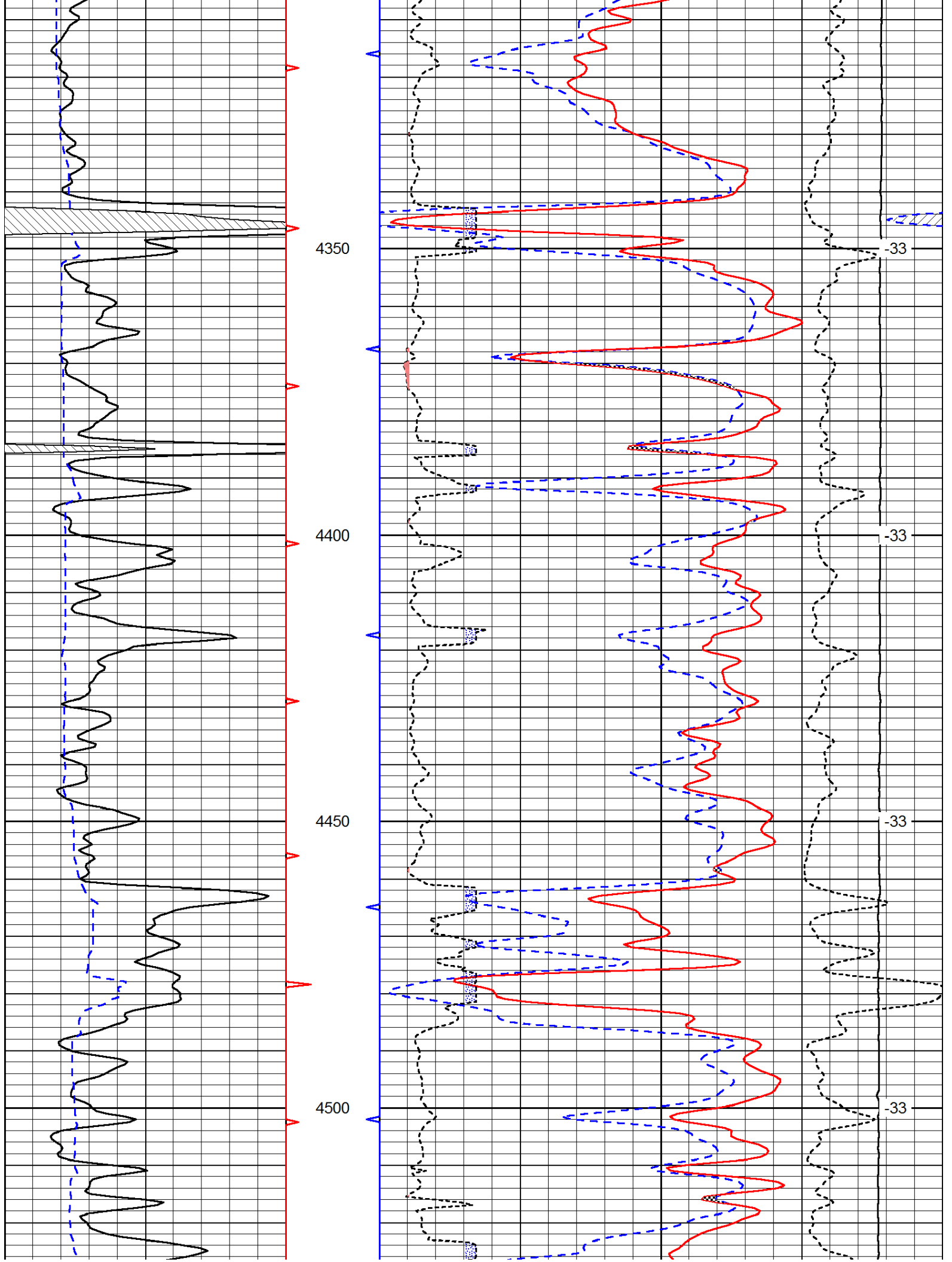


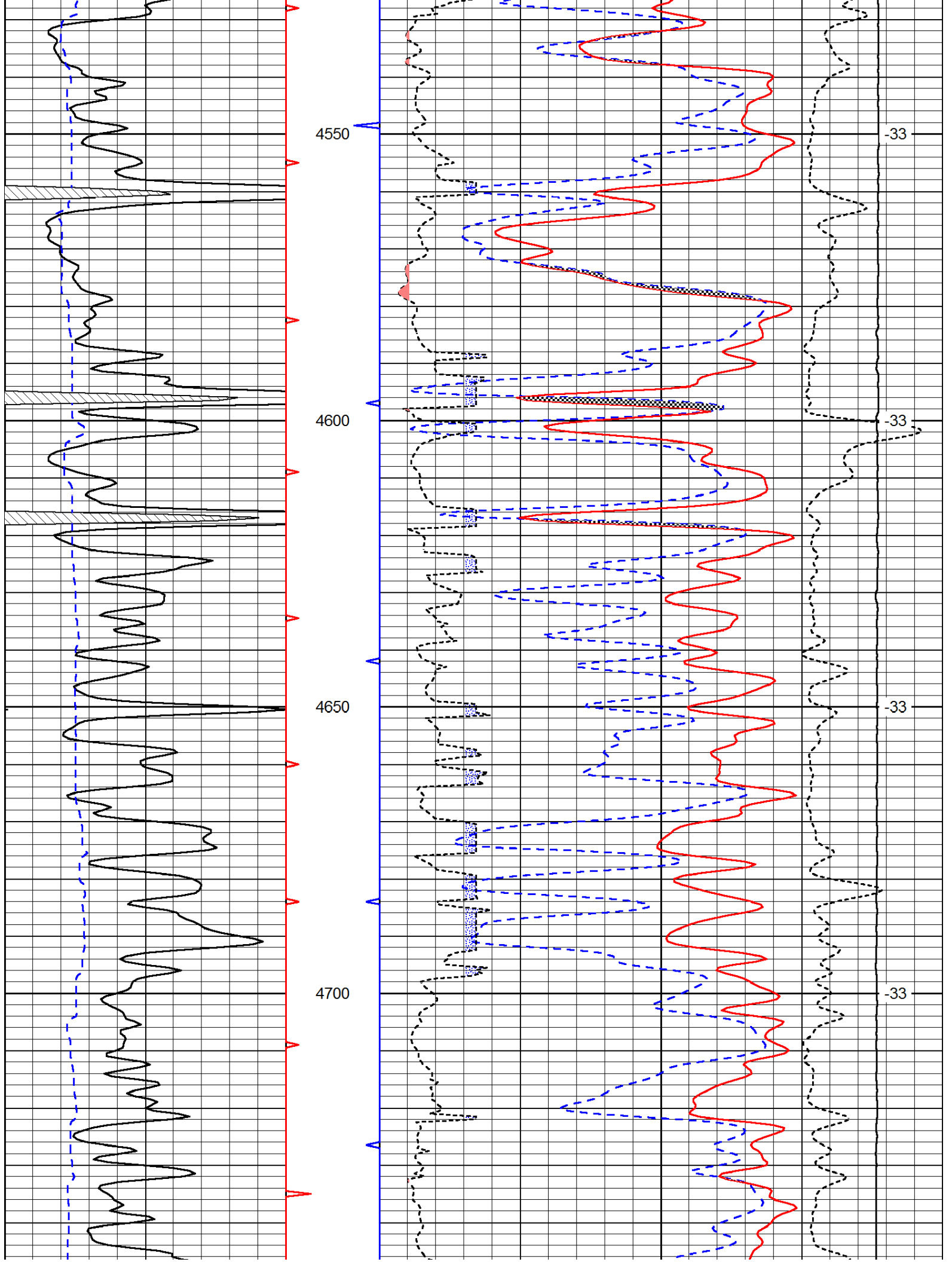


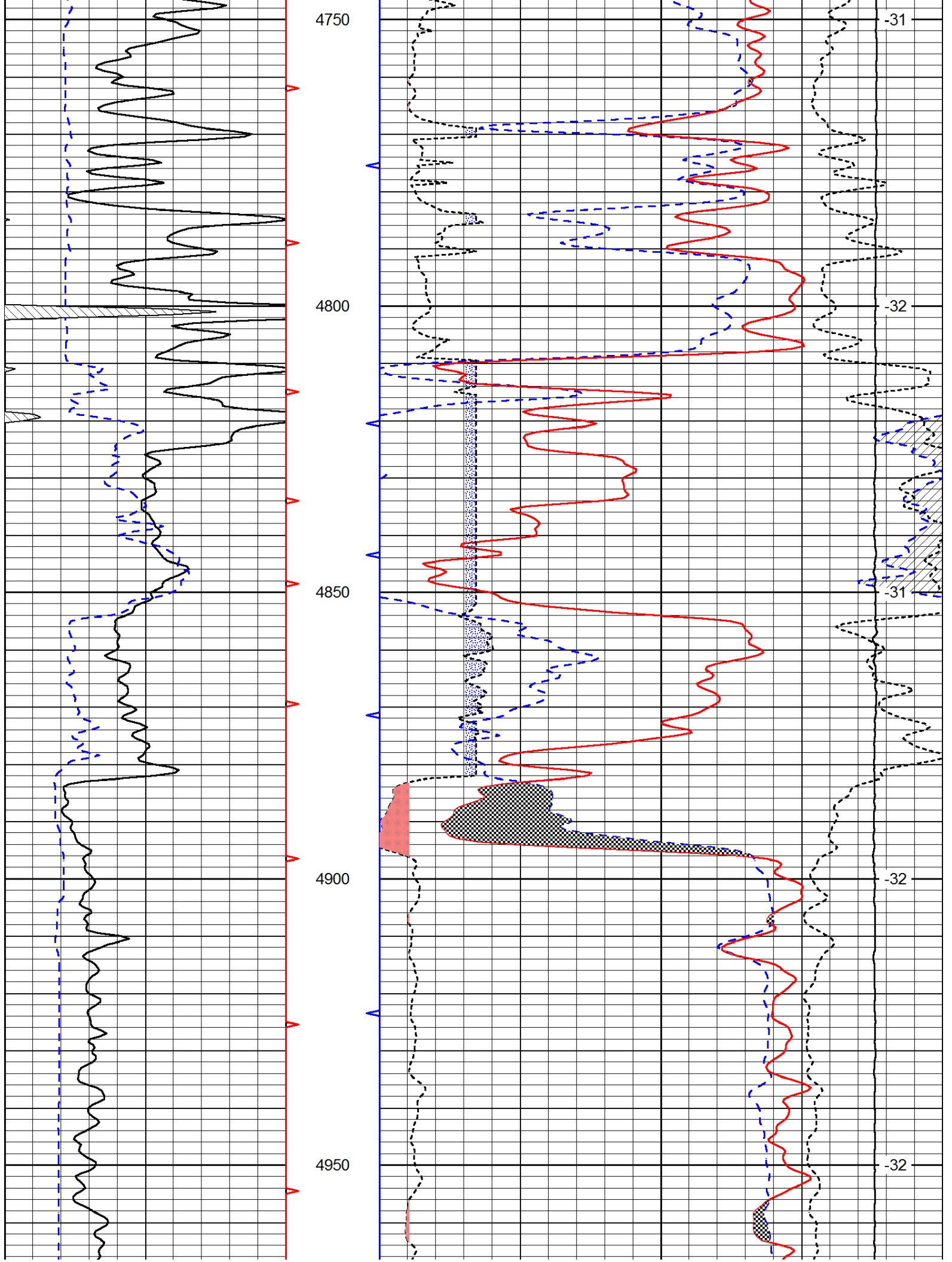


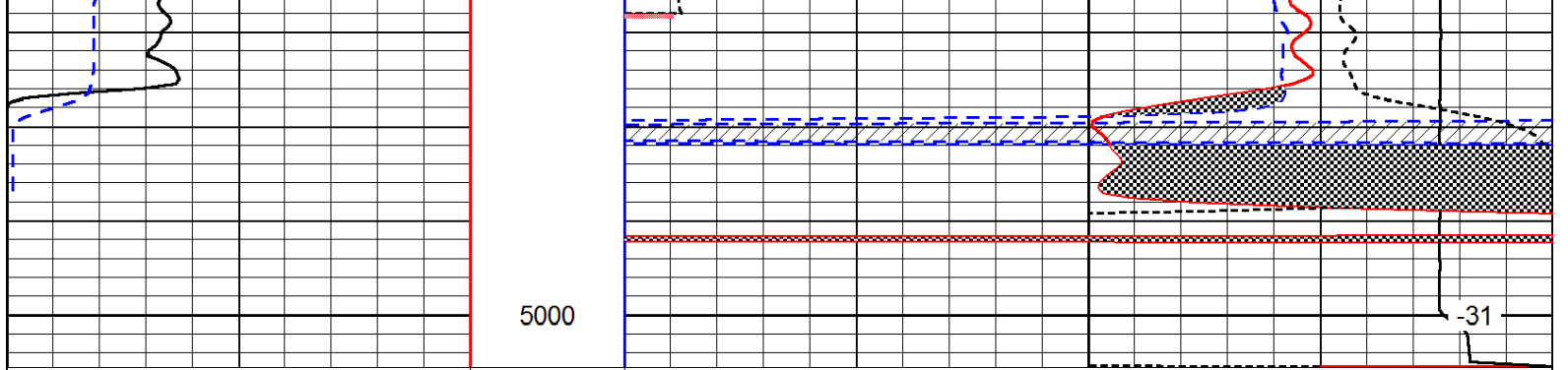












0	Gamma Ray	150
6	Caliper (GAPI)	16

30	Compensated Neutron (Limestone)			-10	
30	Compensated Density (Limestone)			-10	
2.625	DGA	3.425	-0.25	Correction	0.25
15000	Line Tension			0	

LSPD