



Pioneer Energy Services

Dual Induction Log

15-055-22,269-00-00

API No.

Company **Palmer Oil, Inc.**
 Well **Brookover #8-5**
 Field **Staley Northwest**
 County **Finney** State **Kansas**

Location
 NW-SE-NE-NW
 925' FNL & 2045' FWL

Sec: **8** Twp: **25S** Rge: **32W**

Other Services
 CNL/CDL
 MEL/BHCS

Elevation

Permanent Datum Ground Level Elevation 2888
 Log Measured From Kelly Bushing 11 Ft. Above Perm. Datum
 Drilling Measured From Kelly Bushing

K.B. 2899
 D.F.
 G.L. 2888

Date	2/17/2014	
Run Number	One	
Depth Driller	5000	
Depth Logger	4999	
Bottom Logged Interval	4998	
Top Log Interval	1700	
Casing Driller	8.625 @ 1750	
Casing Logger	1746	
Bit Size	7.875	
Type Fluid in Hole	Chemical	
Salinity, ppm CL	3,100	
Density / Viscosity	9.2 50	
pH / Fluid Loss	11.0 6.4	
Source of Sample	Flowline	
Rm @ Meas. Temp	1.2 @ 67	
Rmf @ Meas. Temp	.90 @ 67	
Rmc @ Meas. Temp	1.62 @ 67	
Source of Rmf / Rmc	Charts	
Rm @ BHT	.64 @ 126	
Operating Rig Time	5 Hours	
Max Rec. Temp. F	126	
Equipment Number	108	
Location	Hays	
Recorded By	J. Hennickson	
Witnessed By	Kevin Timson	

<<< Fold Here >>>

All interpretations are opinions based on inferences from electrical or other measurements and we cannot and do not guarantee the accuracy or correctness of any interpretation, and we shall not, except in the case of gross or willful negligence on our part, be liable or responsible for any loss, costs, damages, or expenses incurred or sustained by anyone resulting from any interpretation made by any of our officers, agents or employees. These interpretations are also subject to our general terms and conditions set out in our current Price Schedule.

Comments

Thank you for using Pioneer Energy Services
www.pioneerenergy.com
 785 625 3858

Garden City Kansas
 South on HWY 83 to Brookover Ranch Rd, 1 South, East Into

Database File: c:\warrior\data\palmer_brookover #8-5\palmer_brookover_8_5hd.db
 Dataset Pathname: DIL\palmstk
 Presentation Format: dil2in
 Dataset Creation: Mon Feb 17 11:44:31 2014
 Charted by: Depth in Feet scaled 1:600

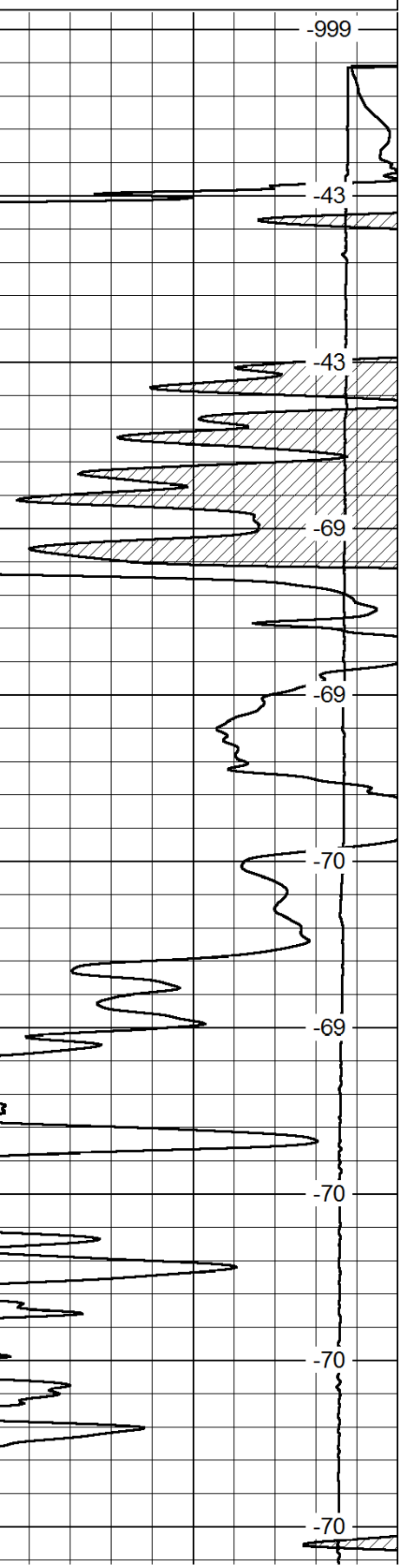
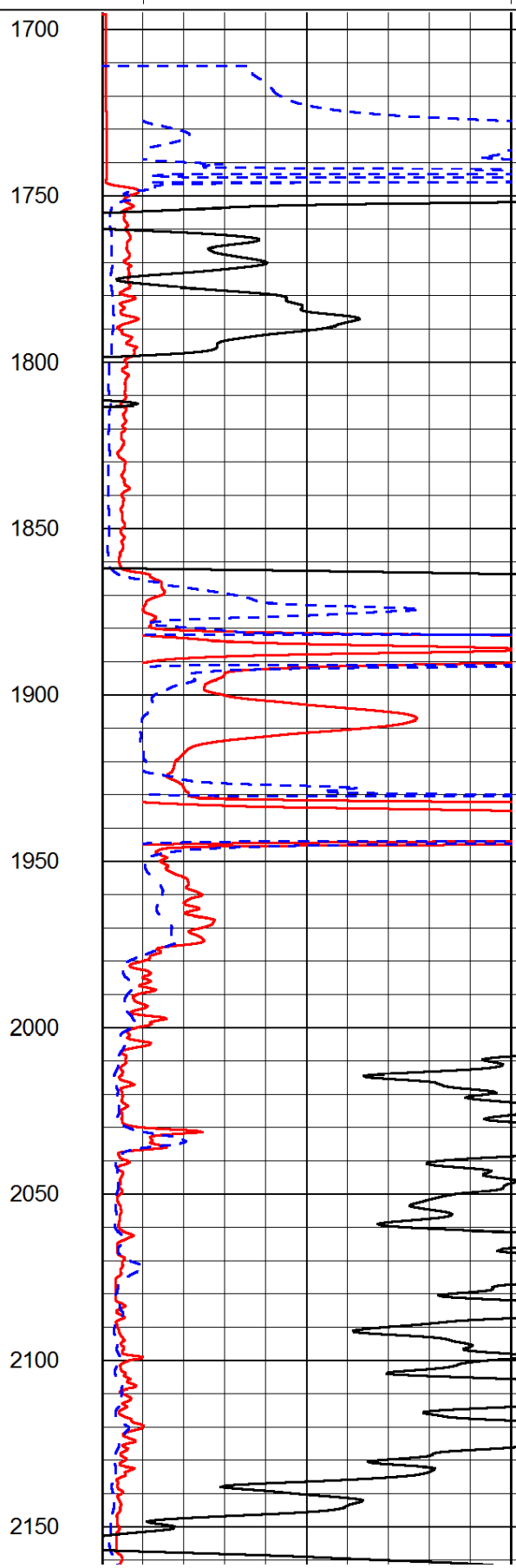
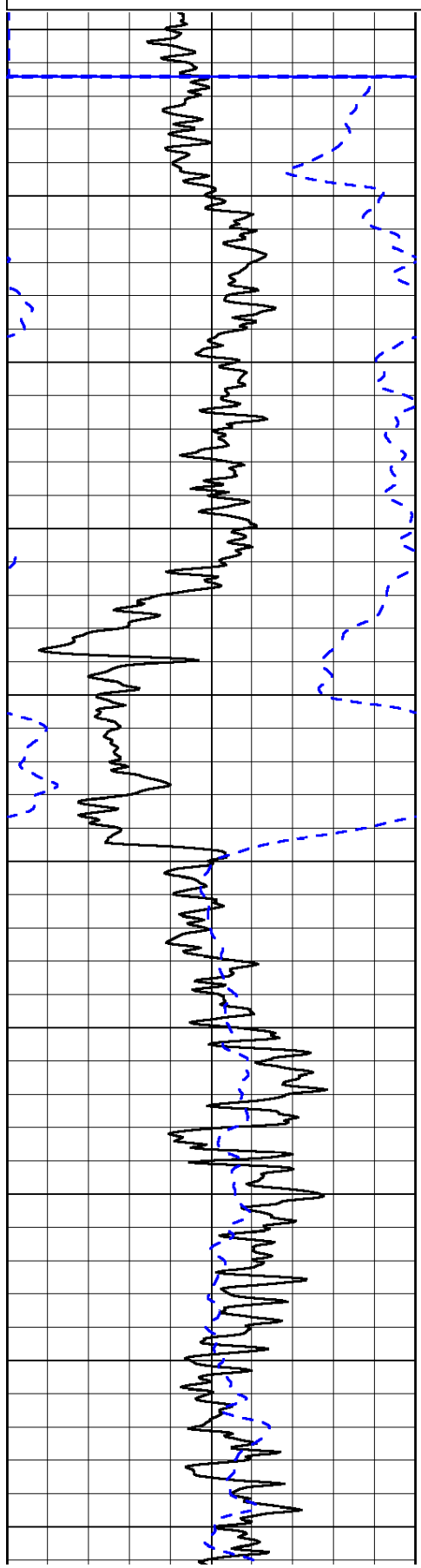
0	Gamma Ray	150
-200	SP (mV)	0

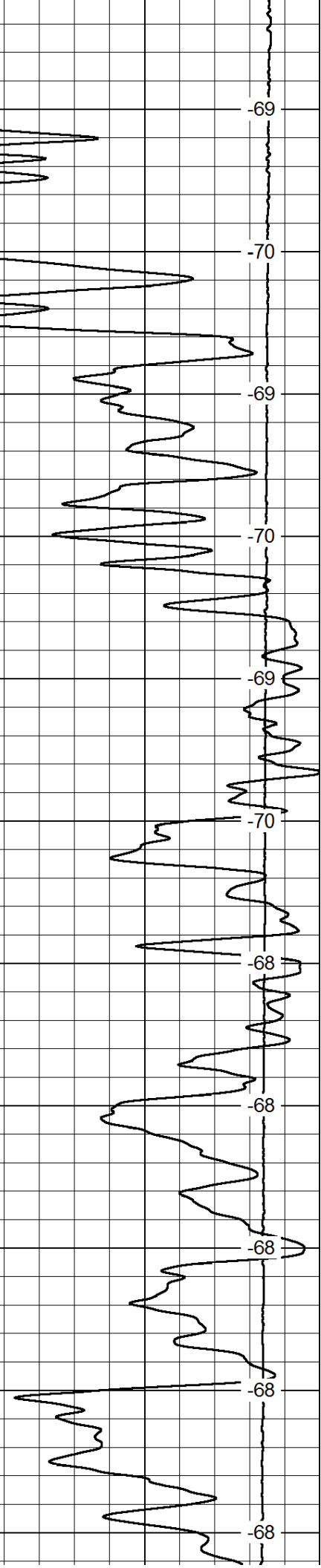
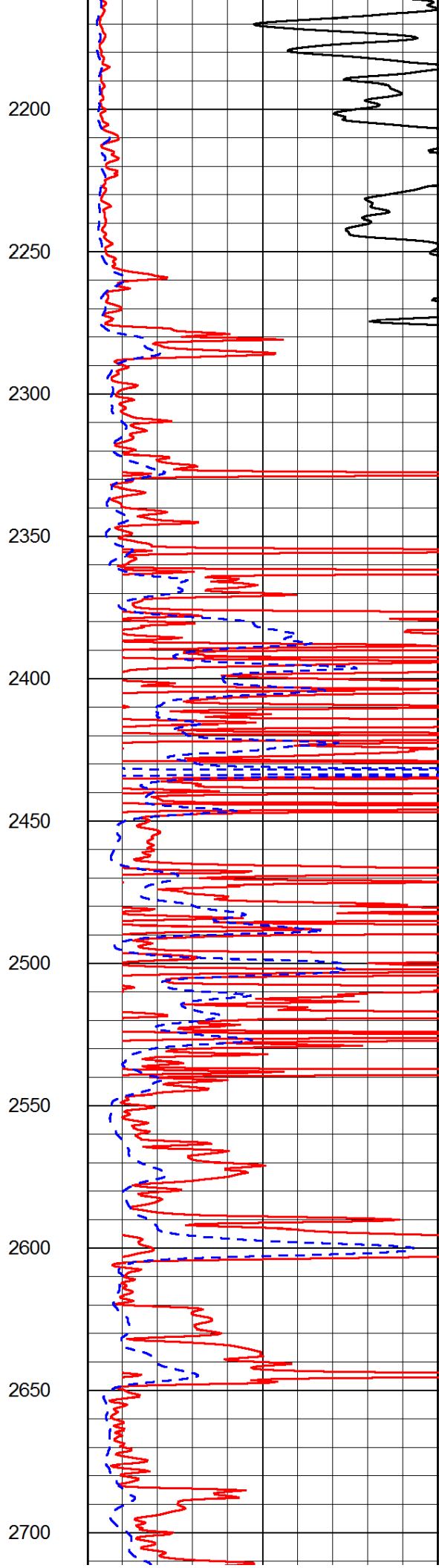
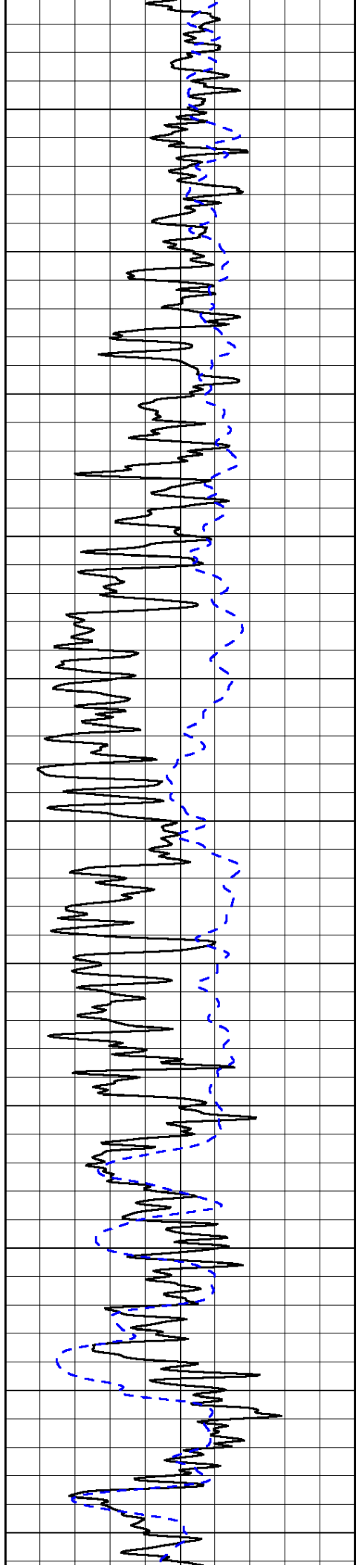
0	Shallow Resistivity	50
0	Deep Resistivity	50

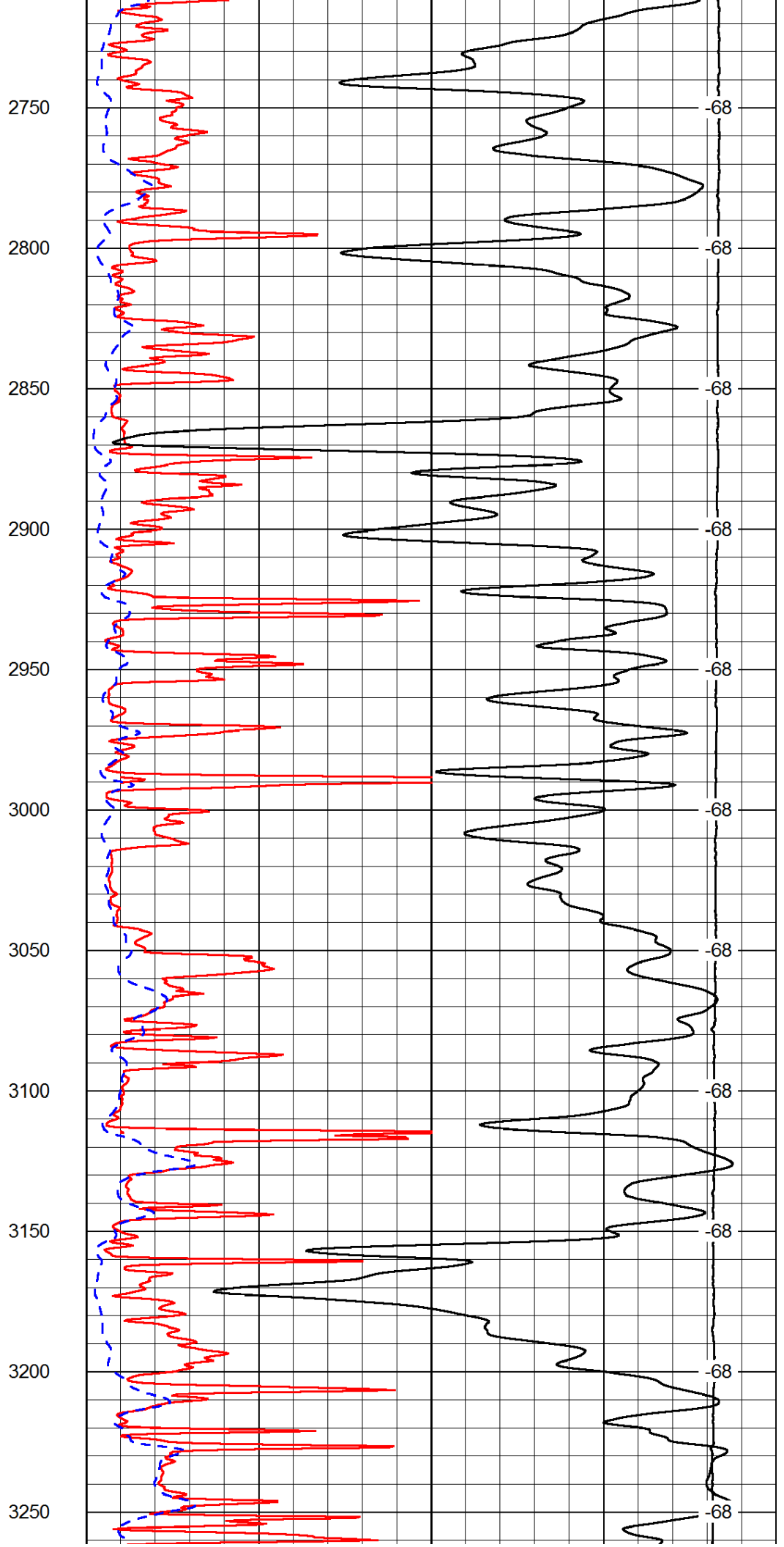
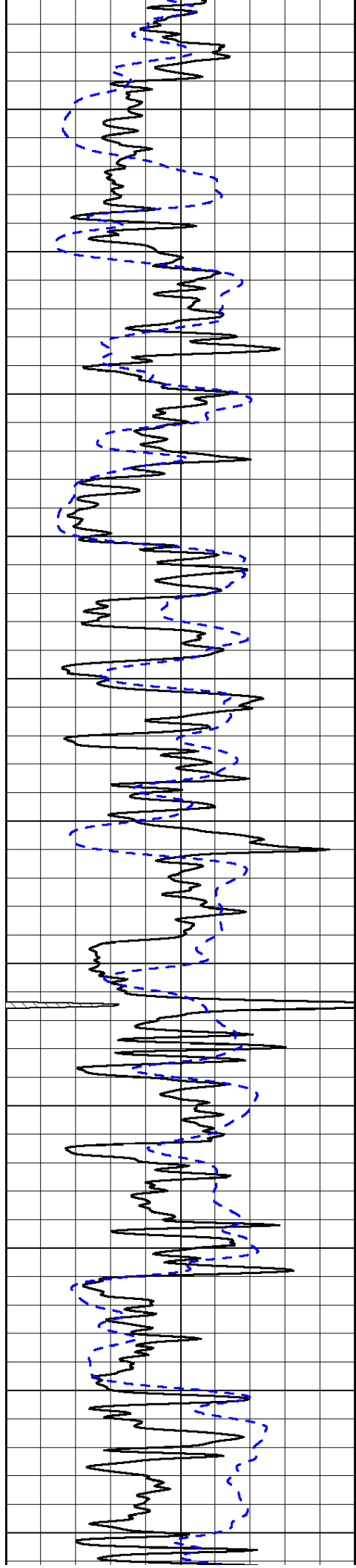
LSPD

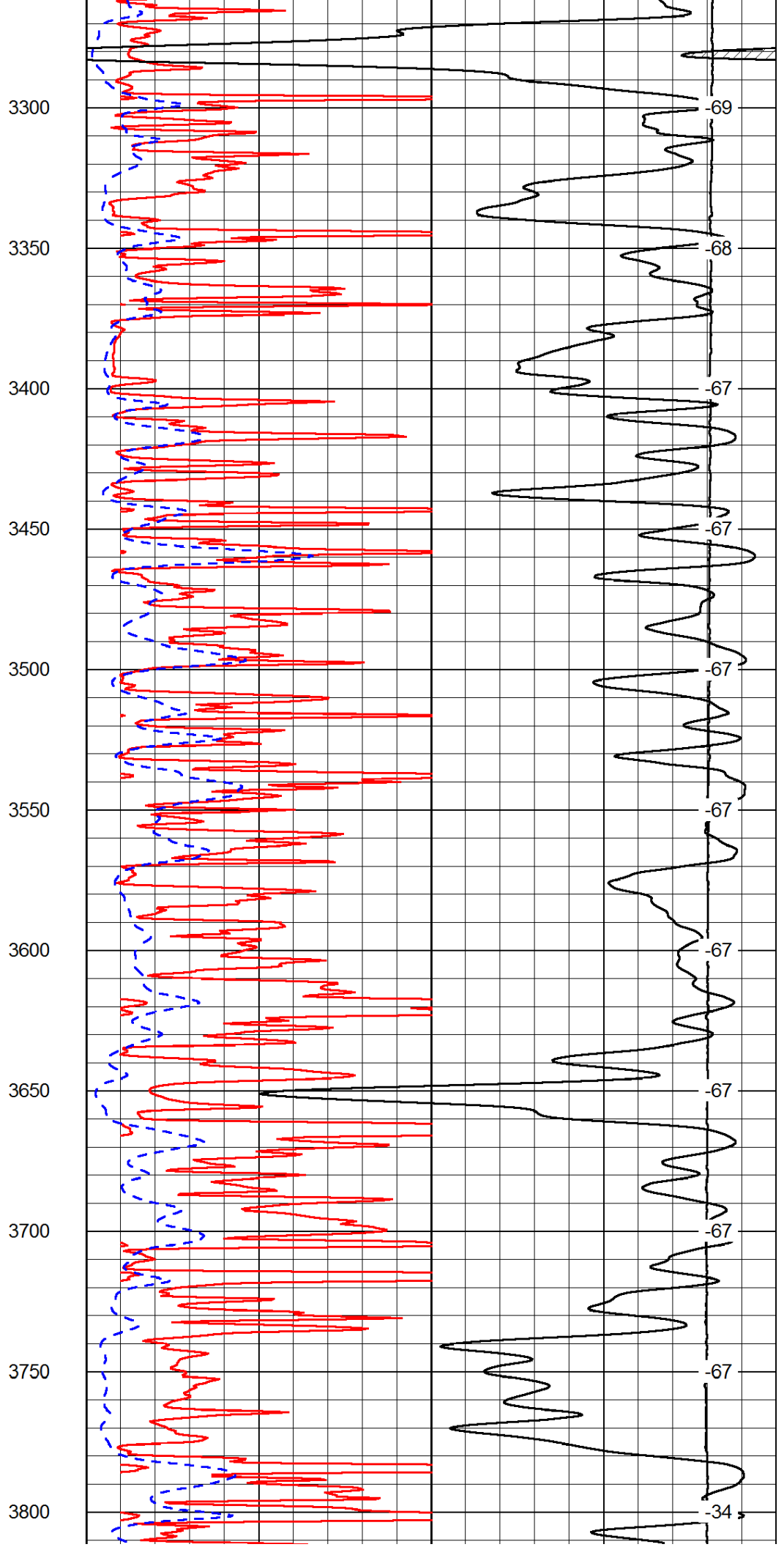
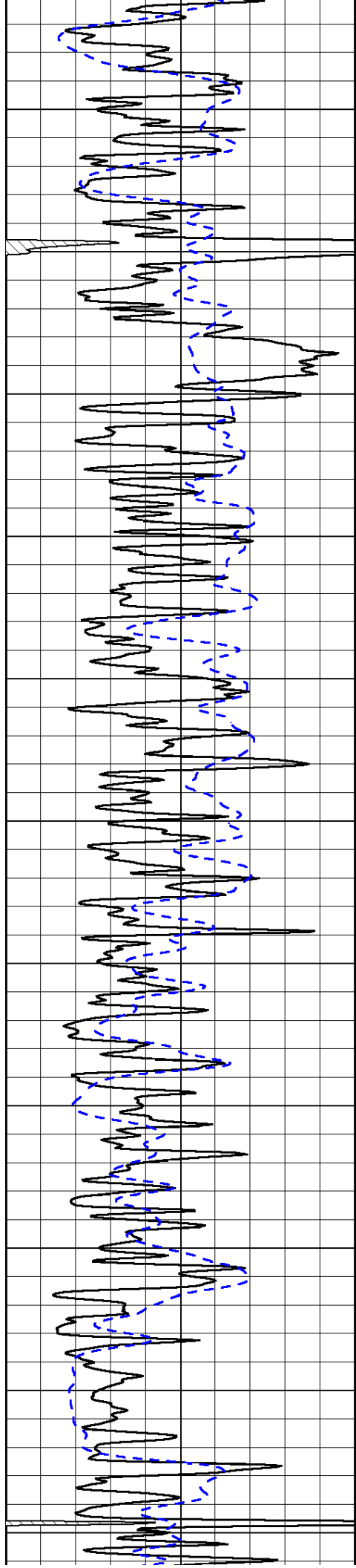
1000	Conductivity	0
15000	Line Tension	0

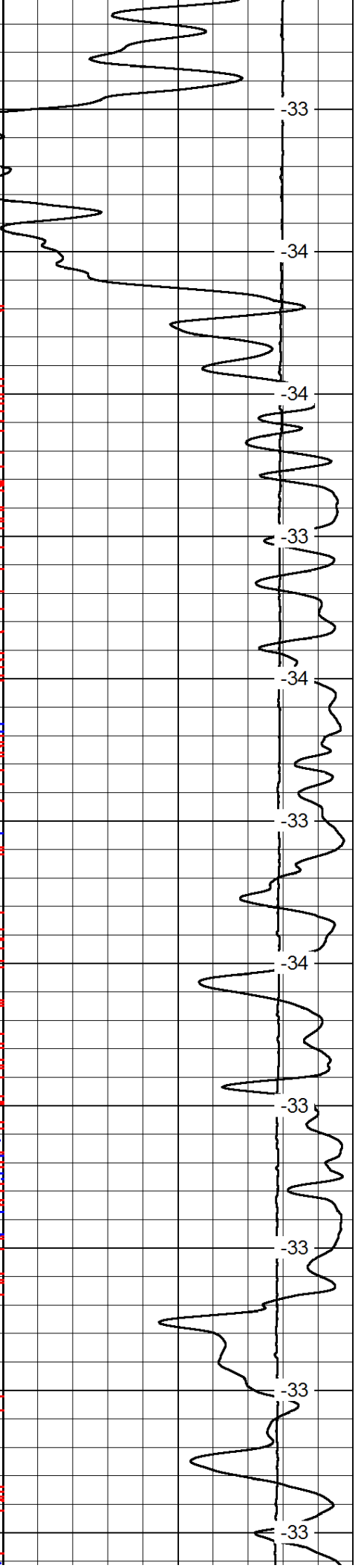
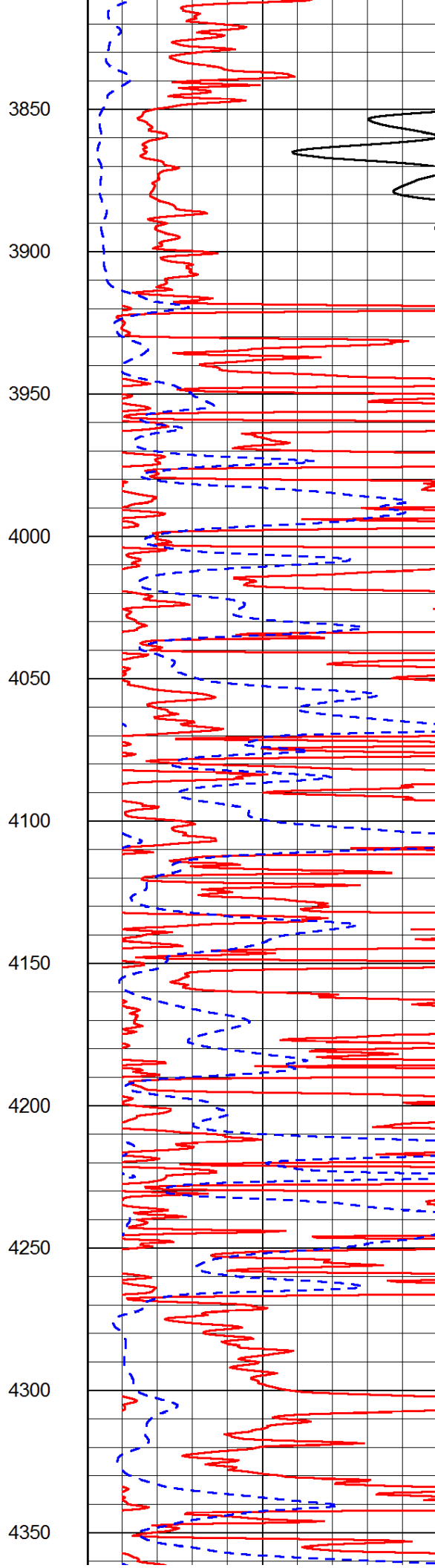
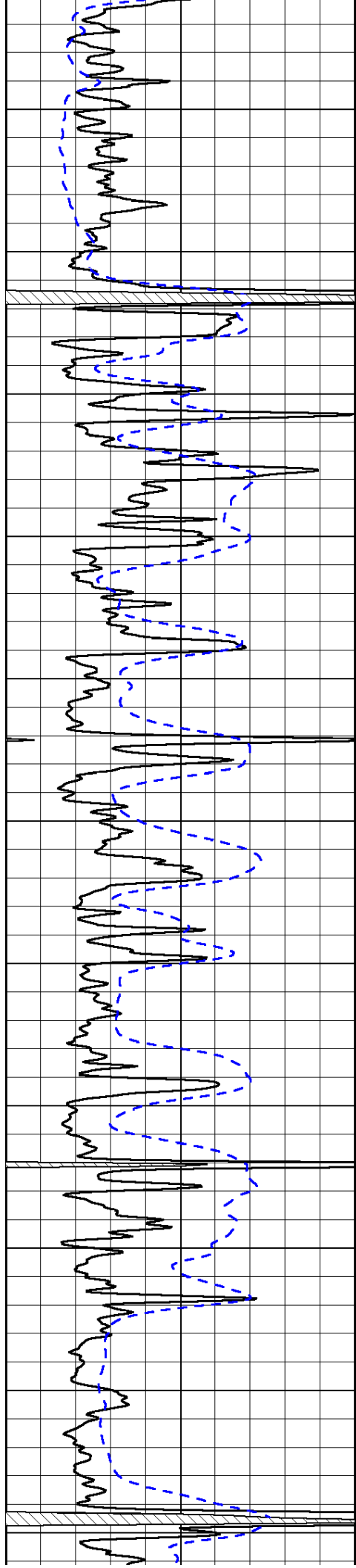
50	Shallow Resistivity	500
50	Deep Resistivity	500

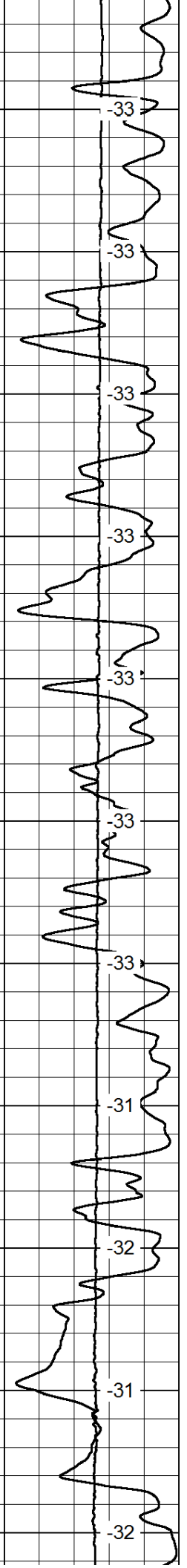
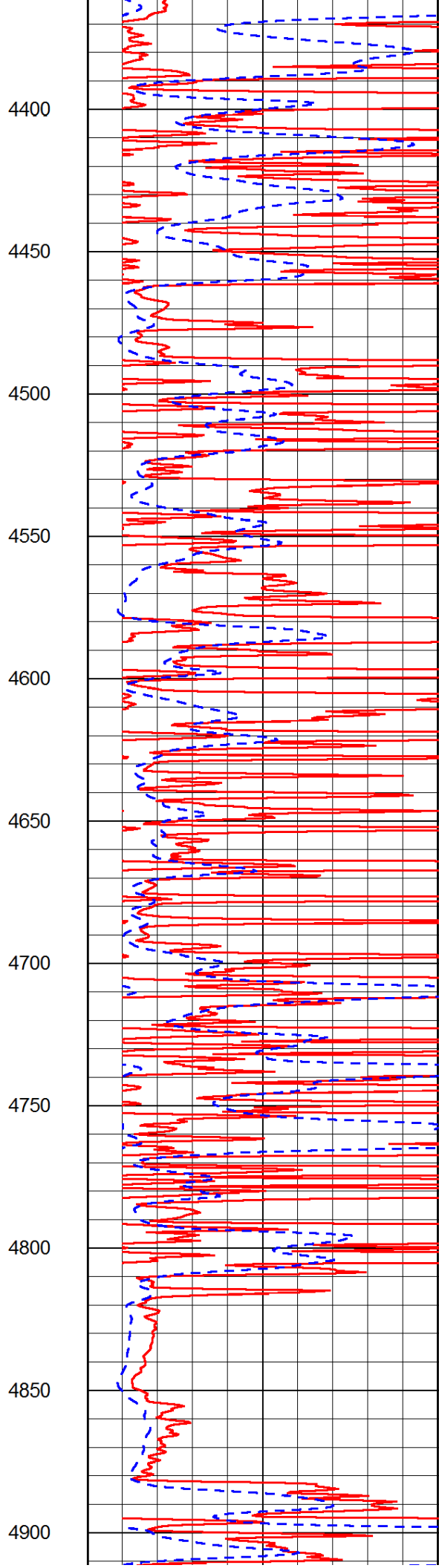
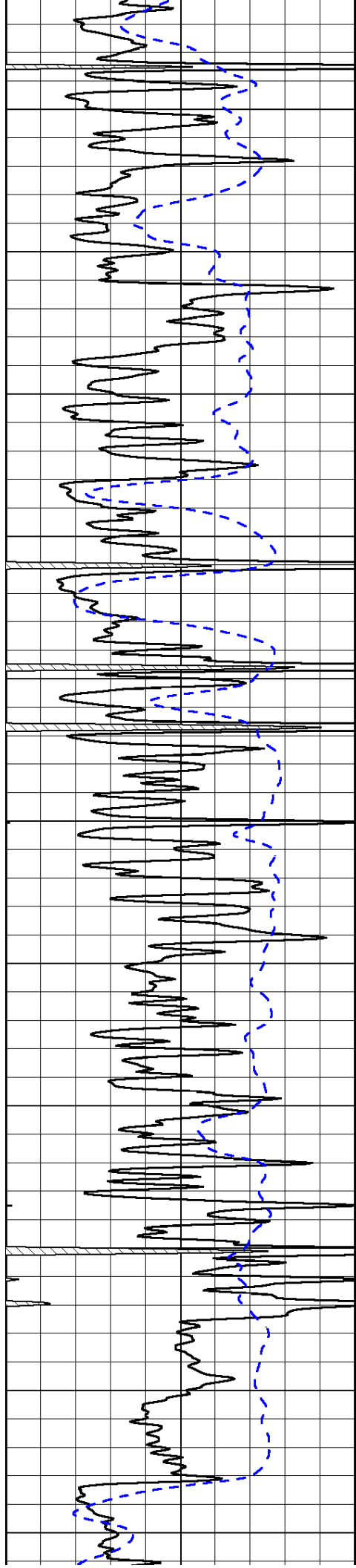


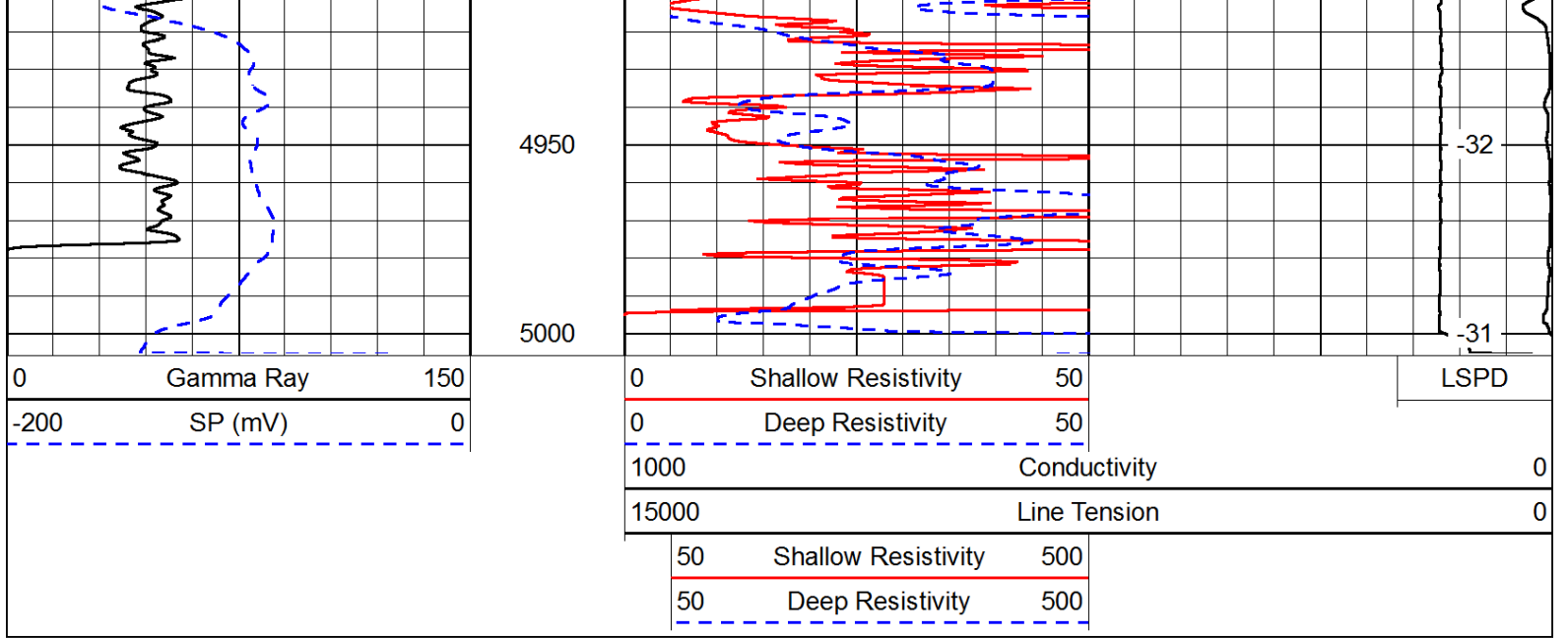




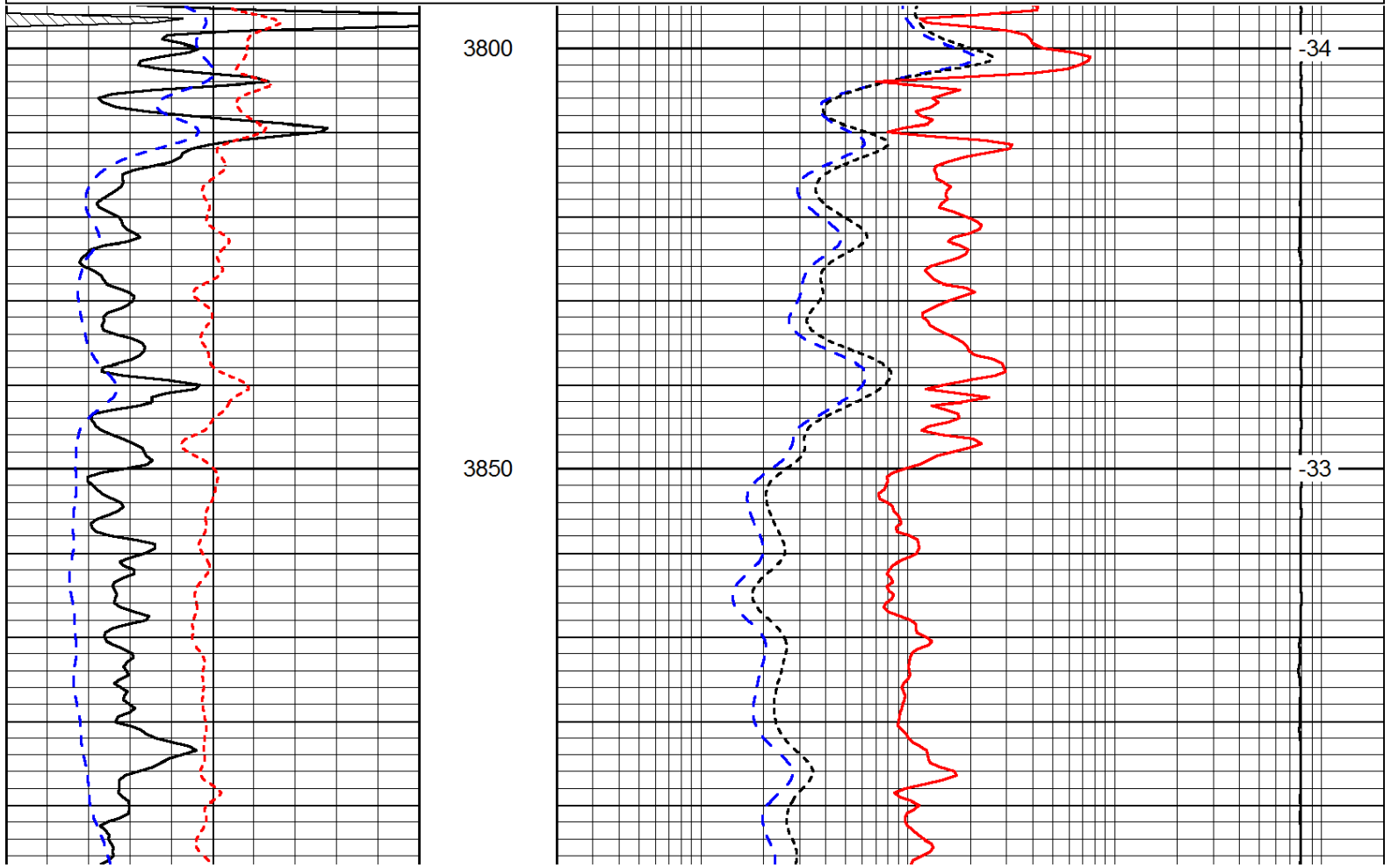
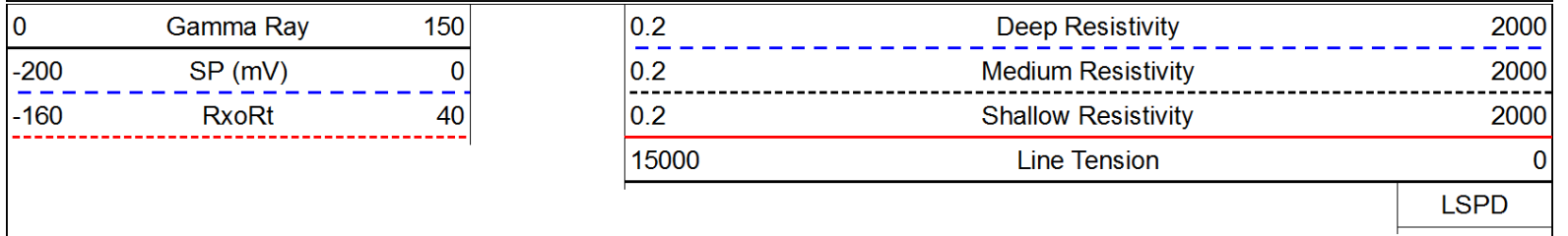


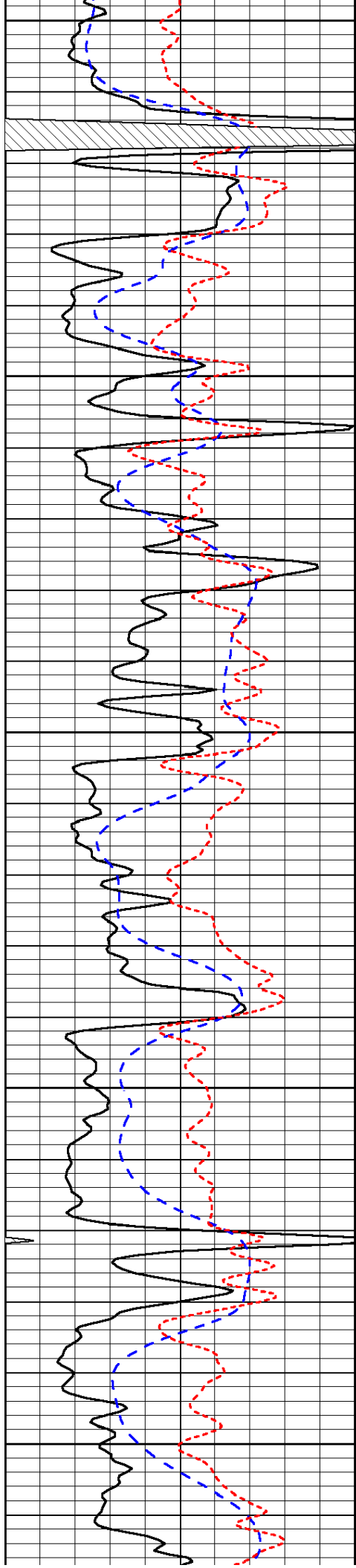






Database File: c:\warrior\data\palmer_brookover #8-5\palmer_brookover_8_5hd.db
 Dataset Pathname: DIL/palmstk
 Presentation Format: dil
 Dataset Creation: Mon Feb 17 11:44:31 2014
 Charted by: Depth in Feet scaled 1:240





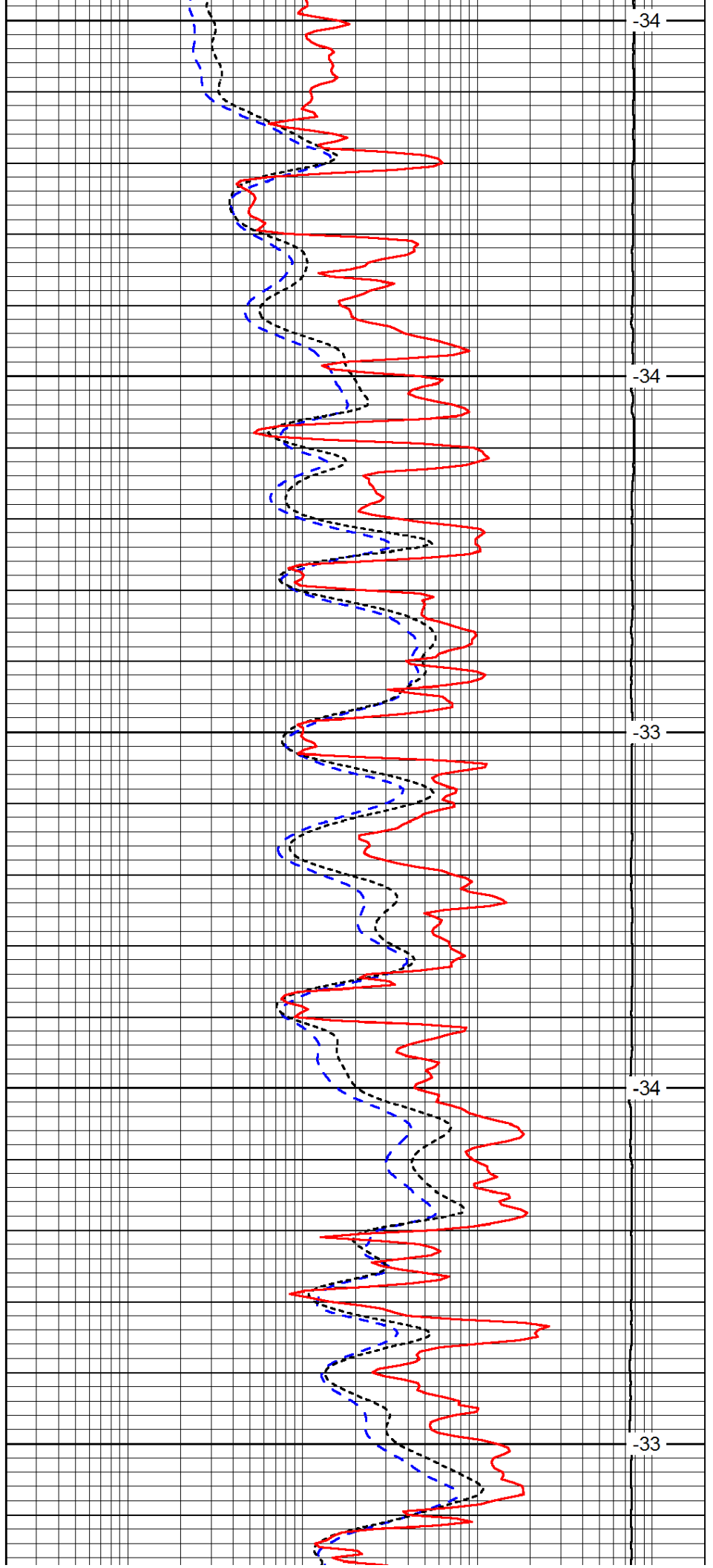
3900

3950

4000

4050

4100



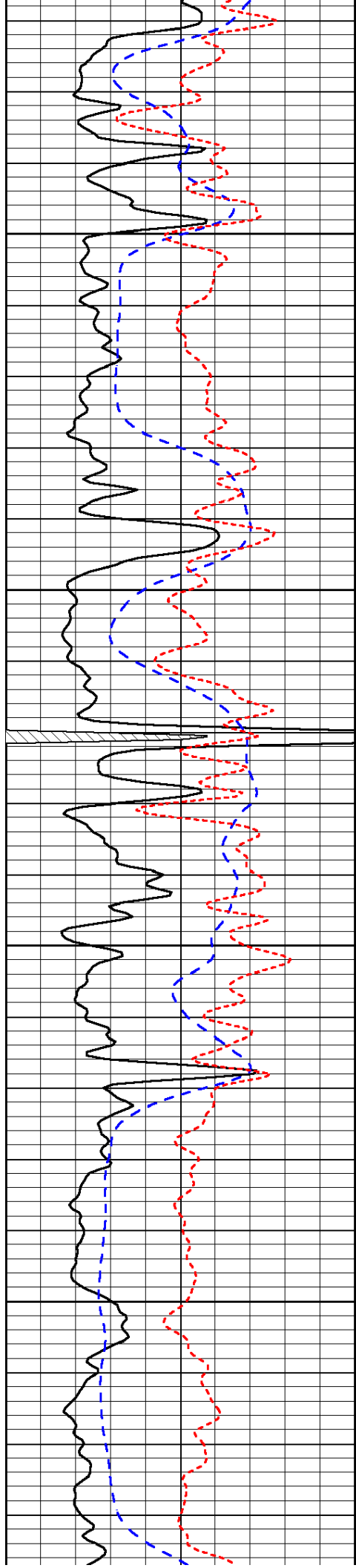
-34

-34

-33

-34

-33

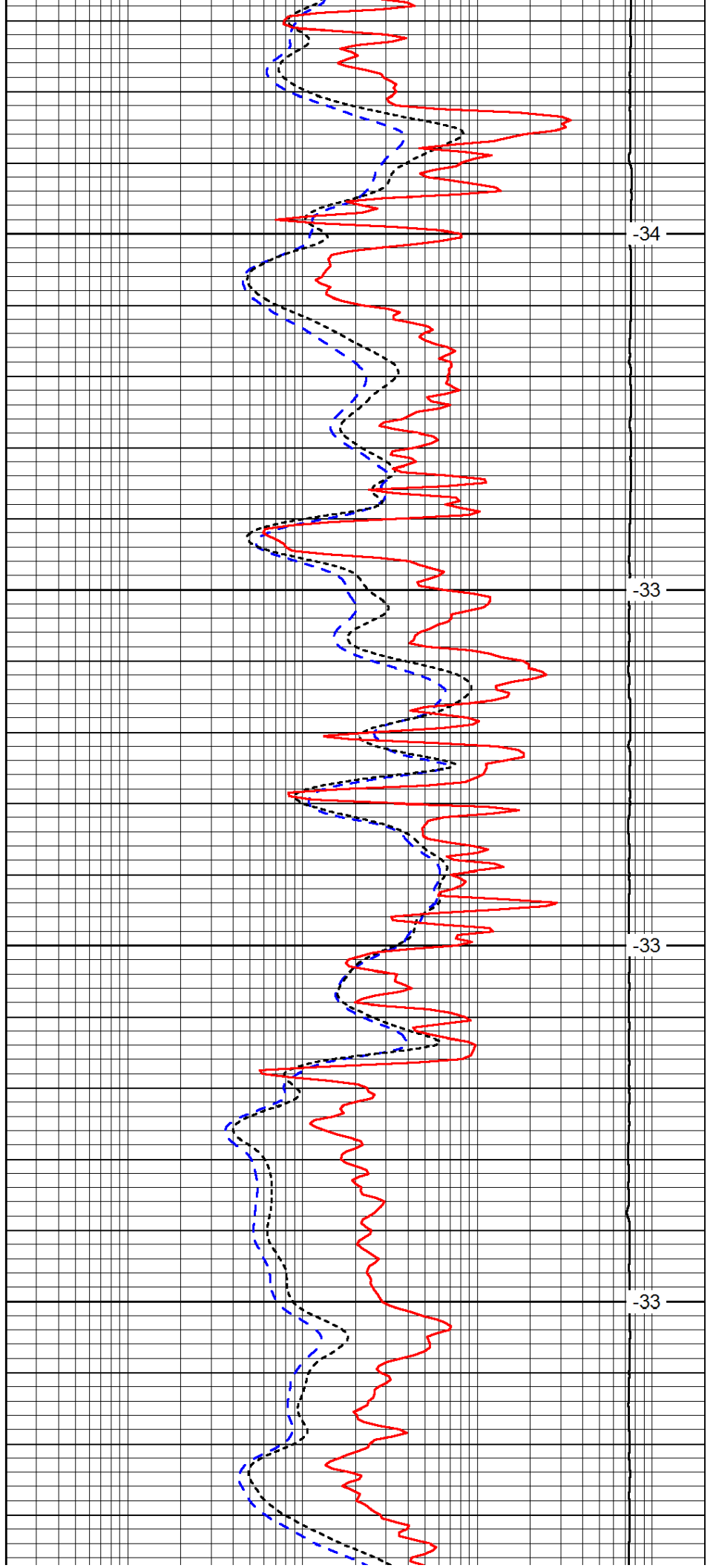


4150

4200

4250

4300

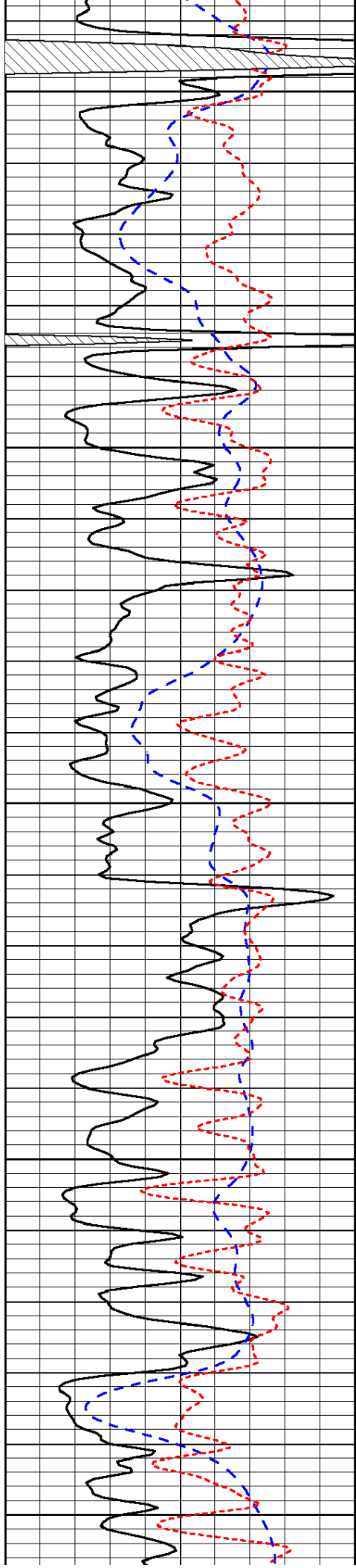


-34

-33

-33

-33



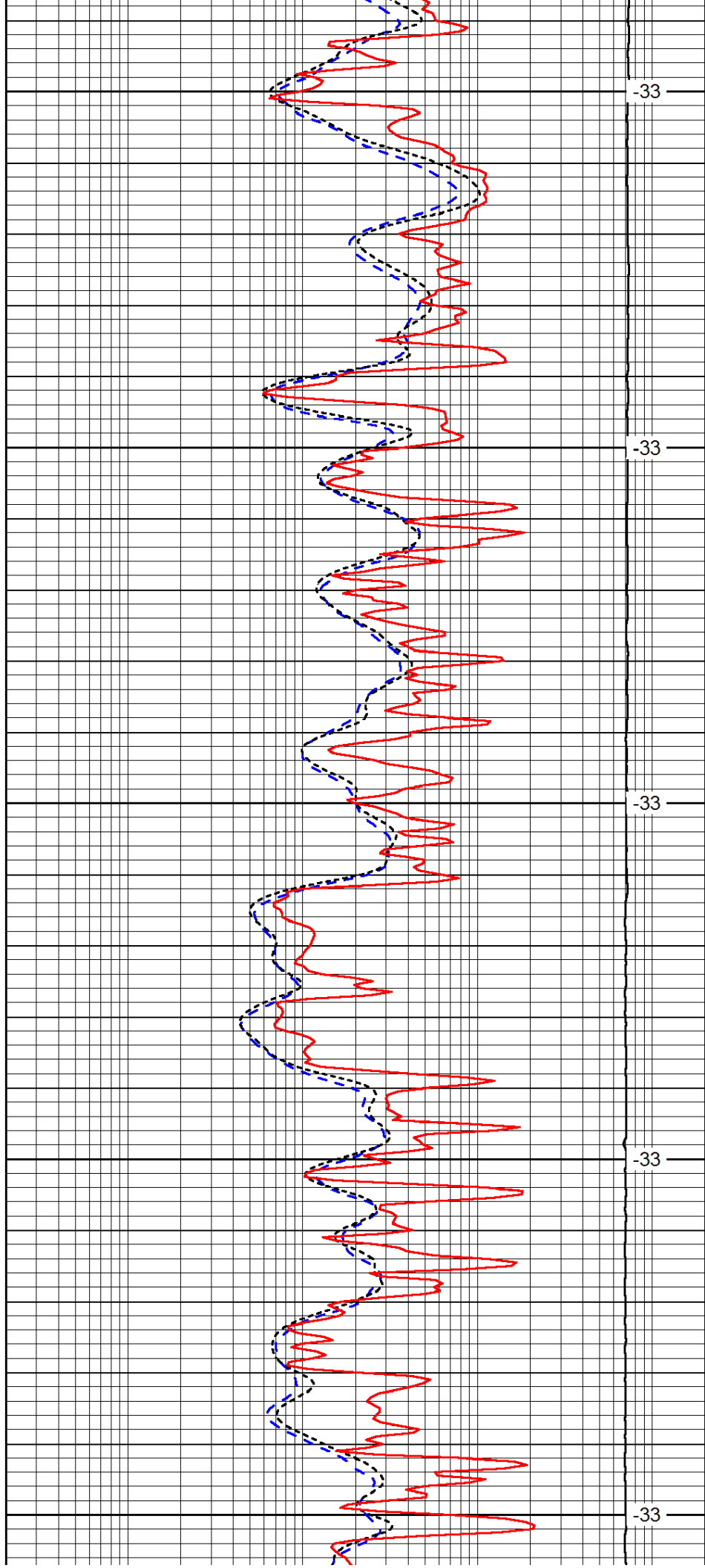
4350

4400

4450

4500

4550



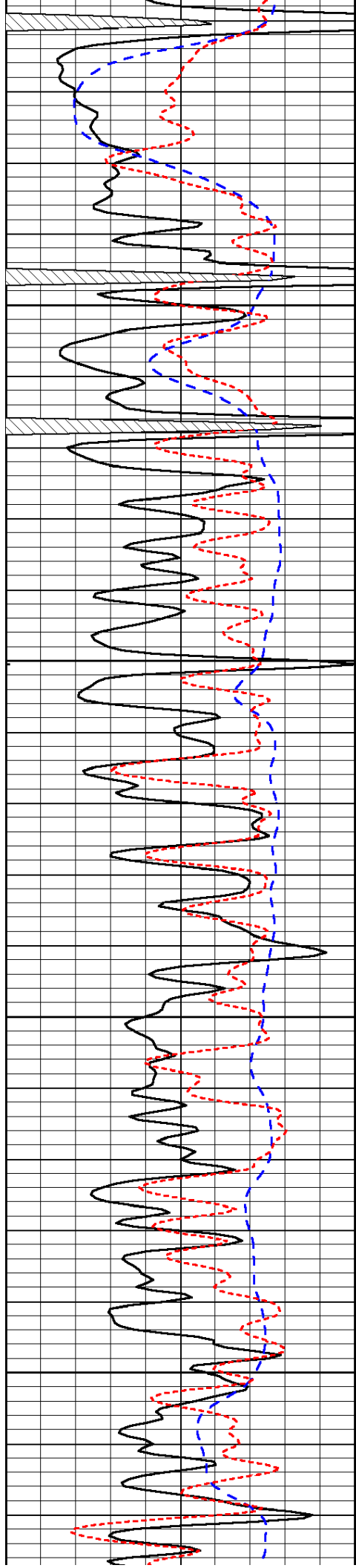
-33

-33

-33

-33

-33

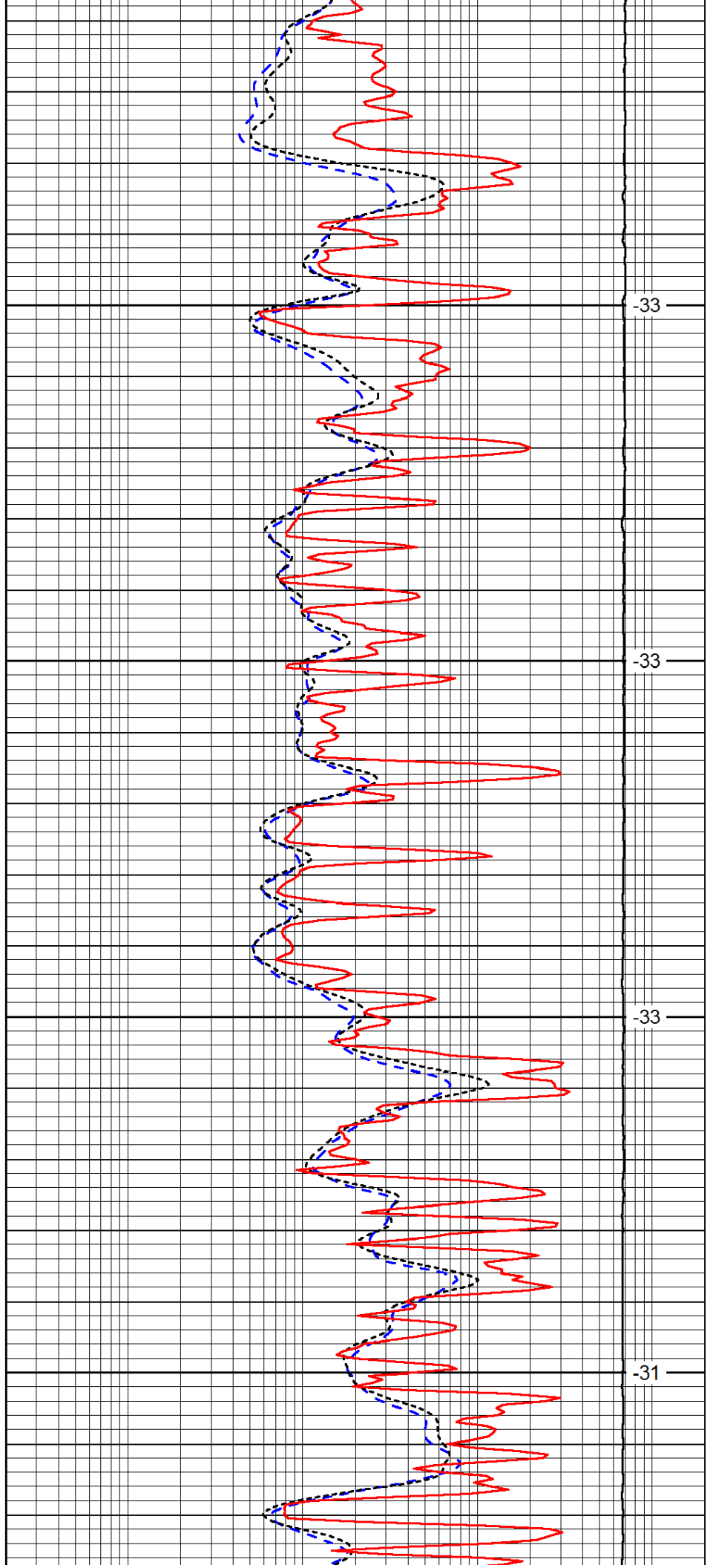


4600

4650

4700

4750

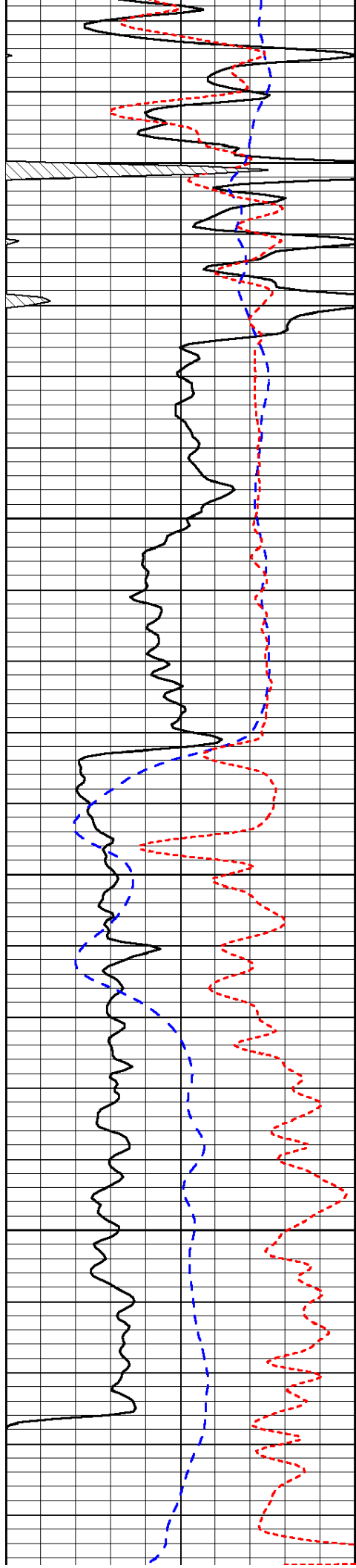


-33

-33

-33

-31

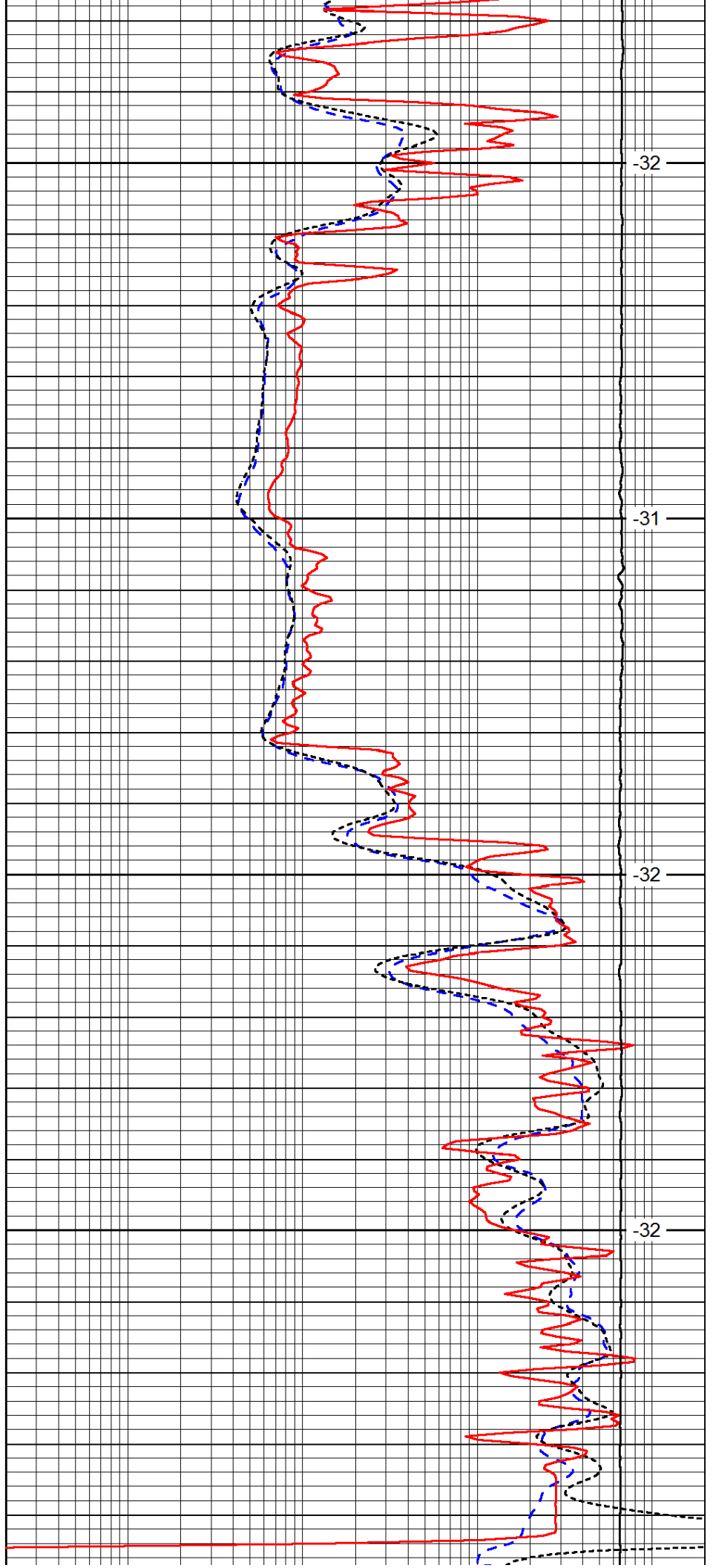


4800

4850

4900

4950

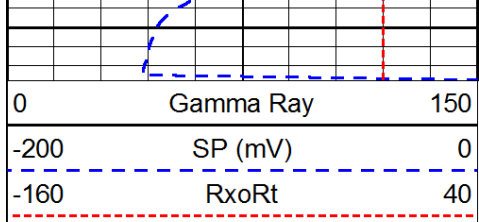


-32

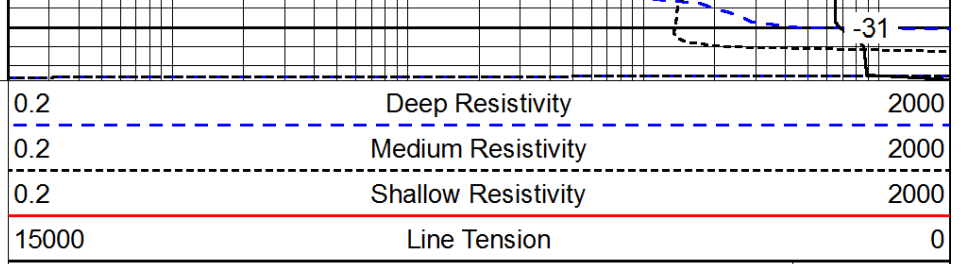
-31

-32

-32



5000



LSPD