



**COMPLETION  
& PRODUCTION  
SERVICES CO.**

**MICRO  
LOG**

Company ANDERSON ENERGY, INC.  
Well MADDEN #1  
Field MADDEN WEST  
County TREGO  
State KANSAS

Company ANDERSON ENERGY, INC.  
Well MADDEN #1  
Field MADDEN WEST  
County TREGO State KANSAS

Location: 2005' FNL & 1790' FWL  
API # : 15-195-22904-0000  
Other Services CDL/CNL DIL  
Permanent Datum GROUND LEVEL Elevation 2154  
Log Measured From KELLY BUSHING 9' A.G.L.  
Drilling Measured From KELLY BUSHING  
Elevation K.B. 2163  
D.F. 2161  
G.L. 2154

Date	1/28/14
Run Number	TWO
Depth Driller	4018
Depth Logger	4021
Bottom Logged Interval	4019
Top Log Interval	3100
Casing Driller	8 5/8" @ 300
Casing Logger	300
Bit Size	7 7/8"
Type Fluid in Hole	CHEMICAL MUD
Density / Viscosity	9.2/56
pH / Fluid Loss	10.5/7.2
Source of Sample	FLOWLINE
Rm @ Meas. Temp	.85 @ 55F
Rmt @ Meas. Temp	.63 @ 55F
Rmc @ Meas. Temp	1.02 @ 55F
Source of Rmf / Rmc	MEASUREMENT
Rm @ BHT	.40 @ 116F
Time Circulation Stopped	2 HOURS
Time Logger on Bottom	
Maximum Recorded Temperature	116F
Equipment Number	4010
Location	HAYS, KANSAS
Recorded By	JASON CAPPELLUCCI
Witnessed By	ROGER MARTIN

<<< Fold Here >>>

All interpretations are opinions based on inferences from electrical or other measurements and we cannot and do not guarantee the accuracy or correctness of any interpretation, and we shall not, except in the case of gross or willful negligence on our part, be liable or responsible for any loss, costs, damages, or expenses incurred or sustained by anyone resulting from any interpretation made by any of our officers, agents or employees. These interpretations are also subject to our general terms and conditions set out in our current Price Schedule.

**Comments**

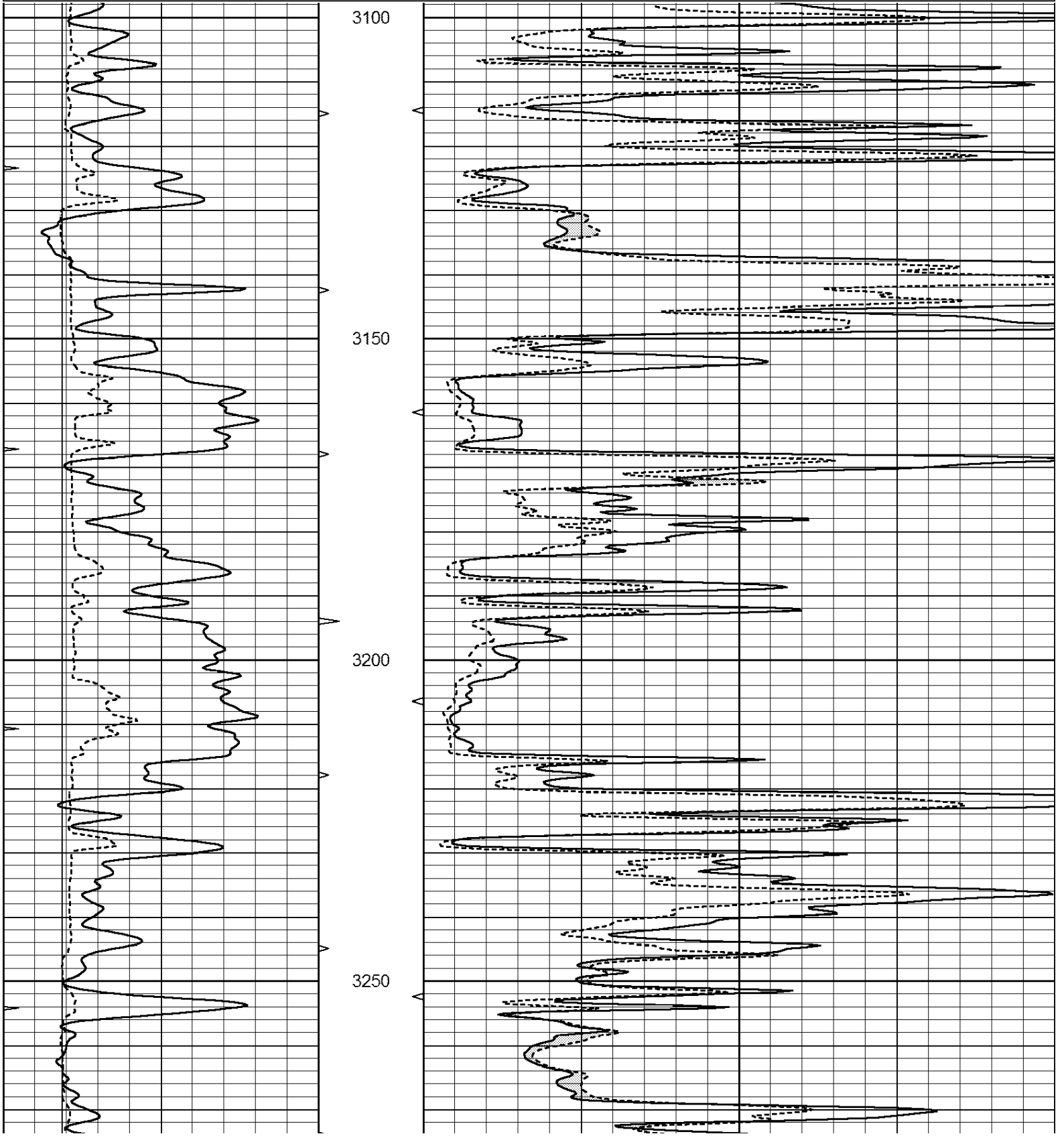
THANK YOU FOR USING NABORS, HAYS, KS. (785) 628-6395  
DIRECTIONS:  
OGALLAH, KS. - 10 SOUTH TO U. RD. - 3 EAST - SOUTH, EAST, & BACK WEST INTO

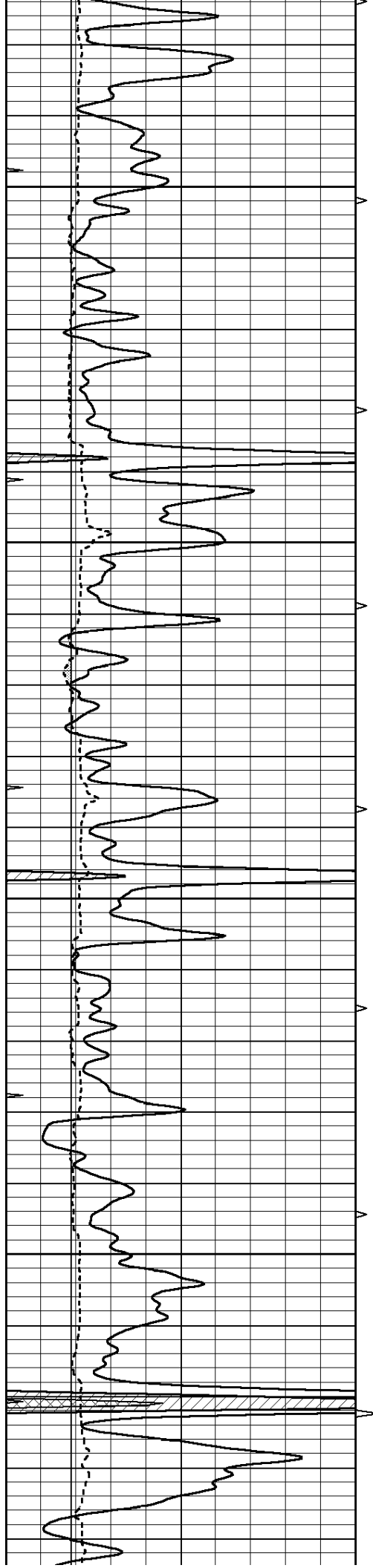


**MAIN SECTION**

Database File: 23884ddn.db  
 Dataset Pathname: pass6.1  
 Presentation Format: \_micro  
 Dataset Creation: Tue Jan 28 22:01:17 2014 by Calc Open-Cased 090629  
 Charted by: Depth in Feet scaled 1:240

0	GAMMA RAY (GAPI)	150	ABHV	0	MEL1.5 (Ohm-m)	40
6	CALIPER (in)	16	10 (ft3)	0	MEL2.0 (Ohm-m)	40
0	MINMK	20	TBHV			
			0 (ft3)	10		



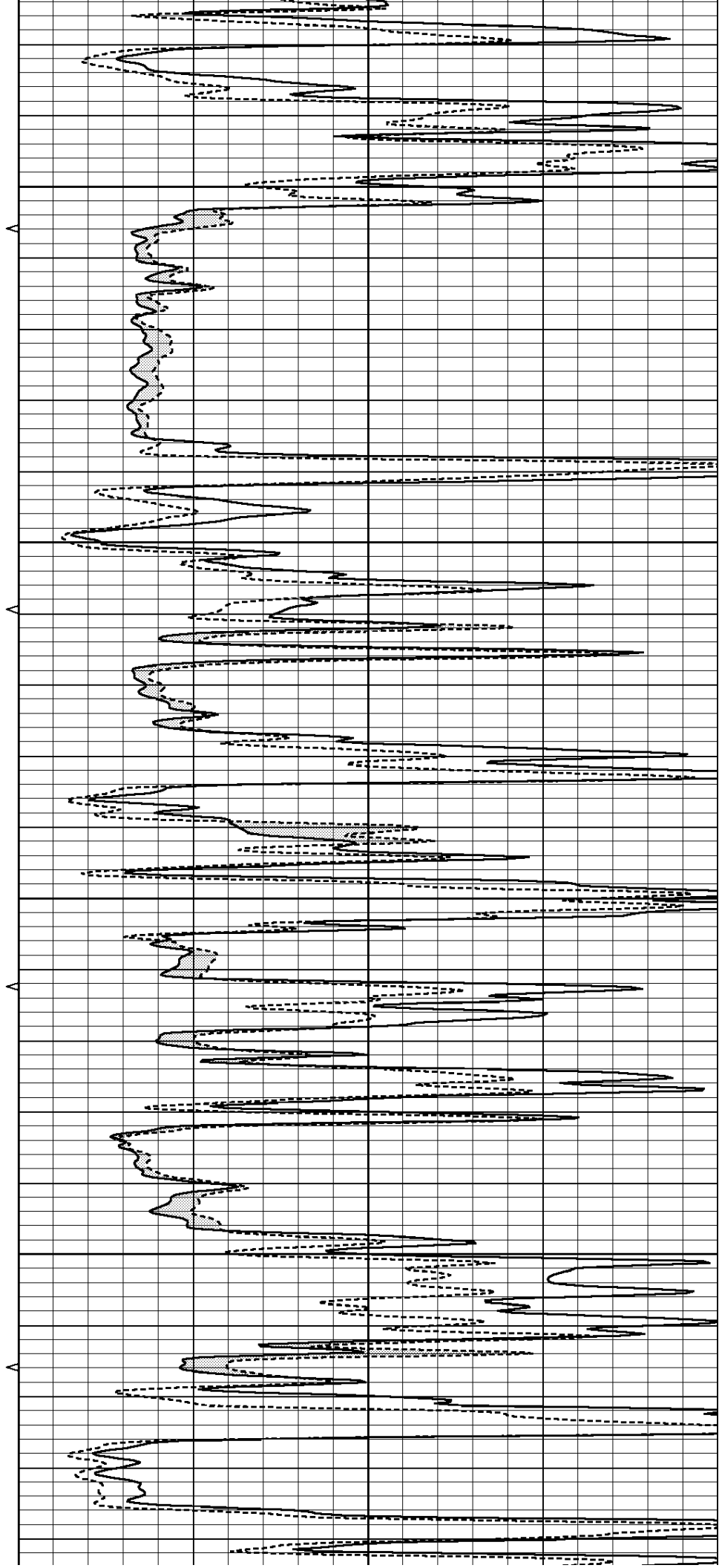


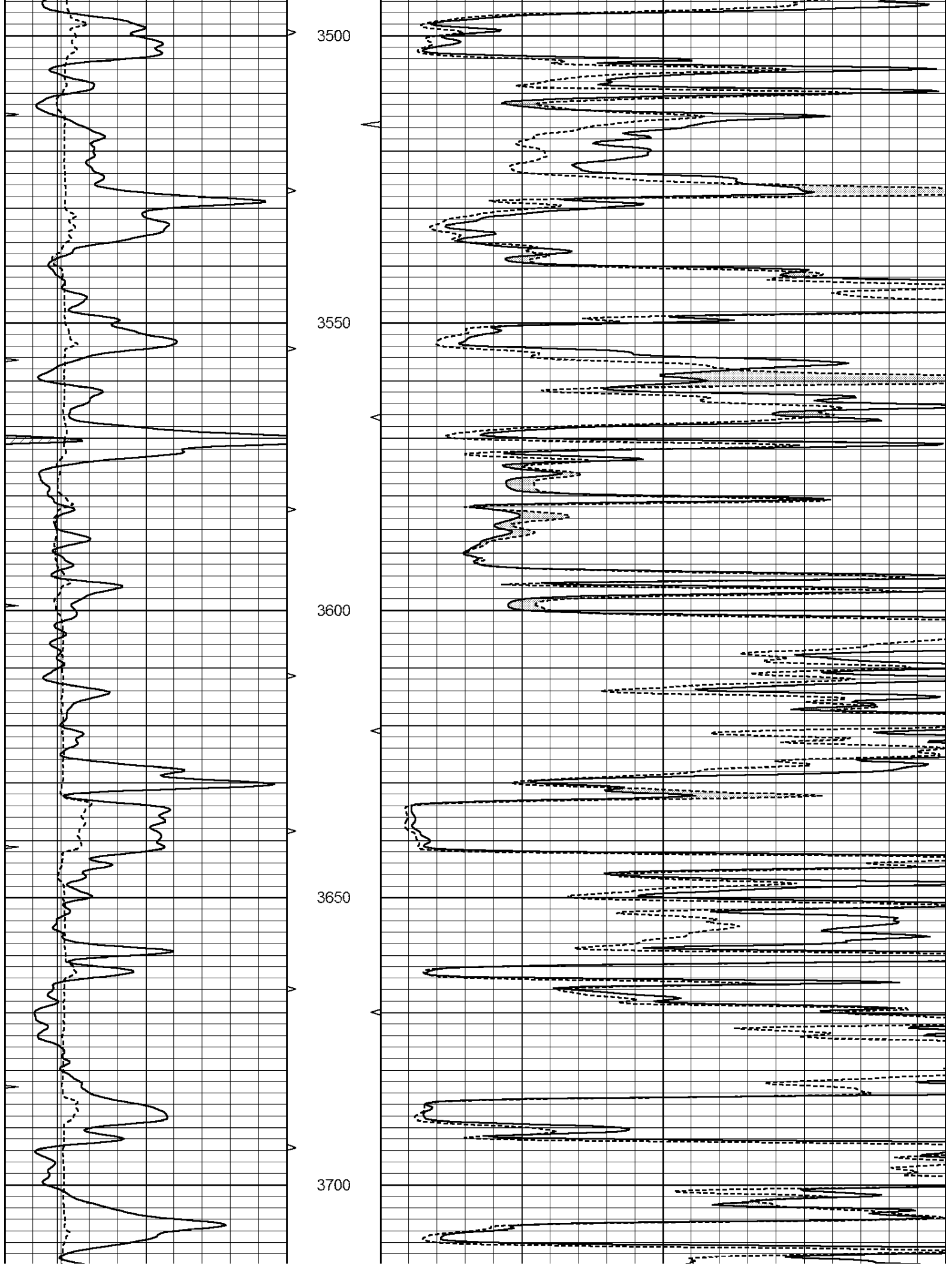
3300

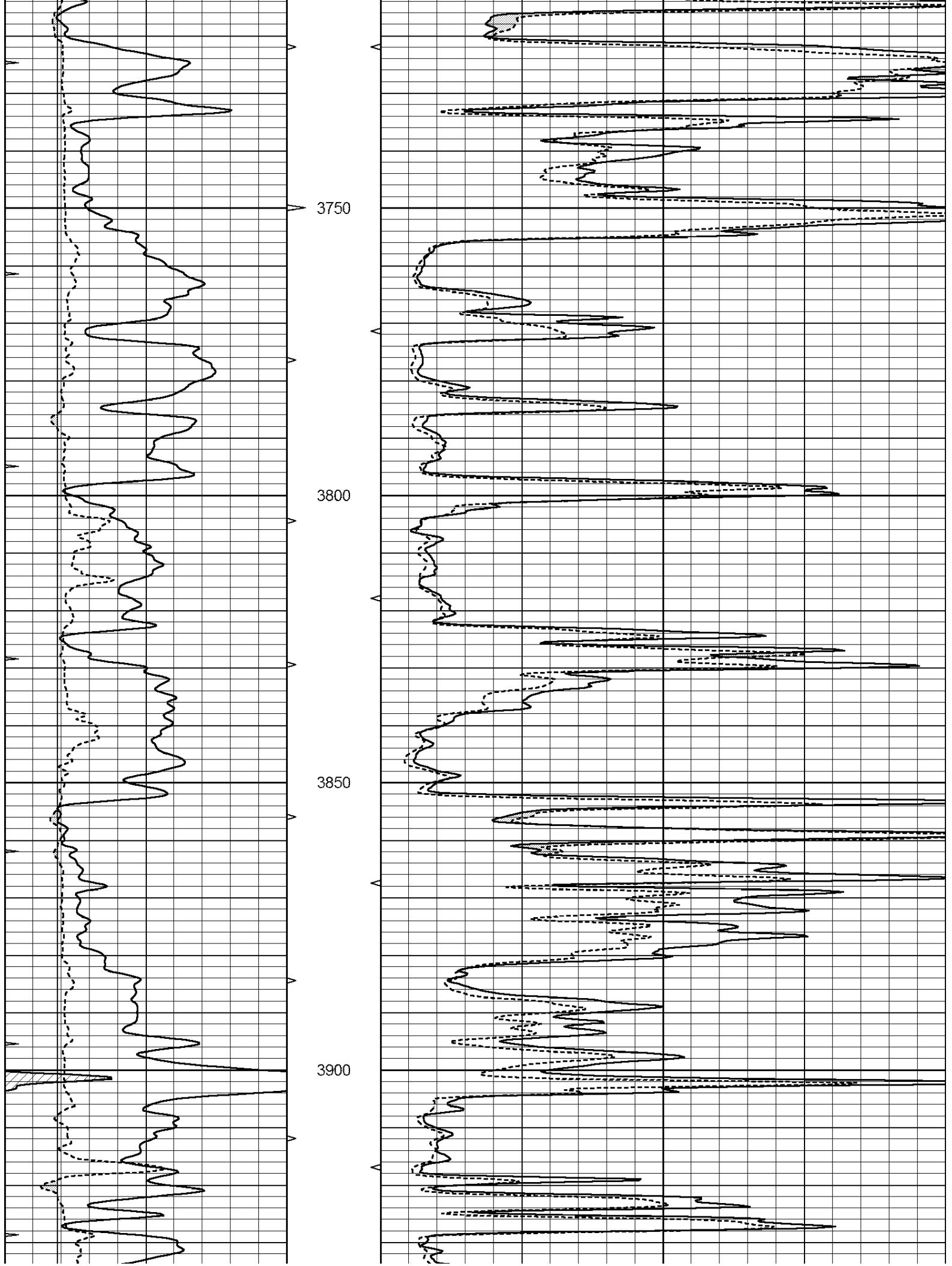
3350

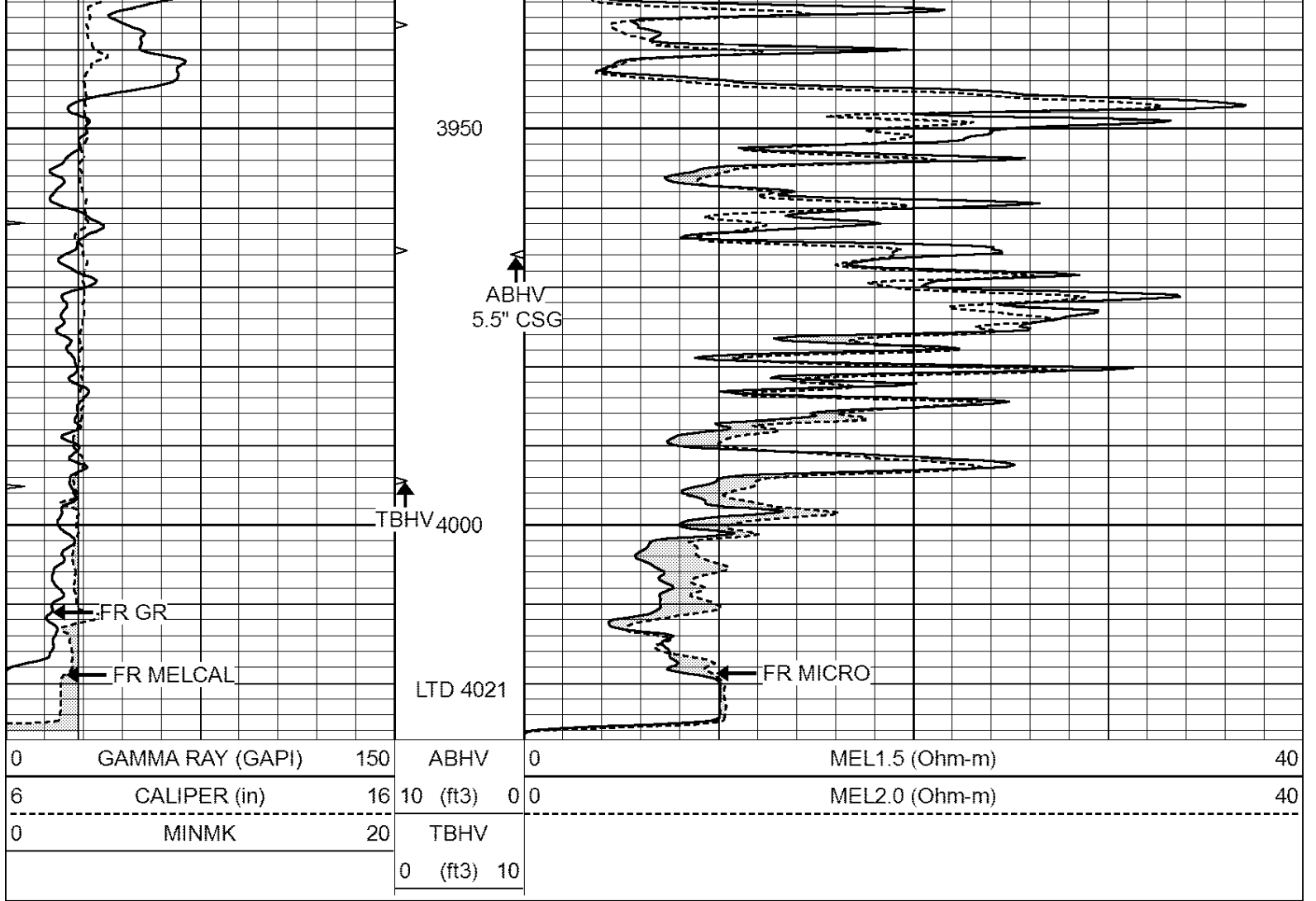
3400

3450





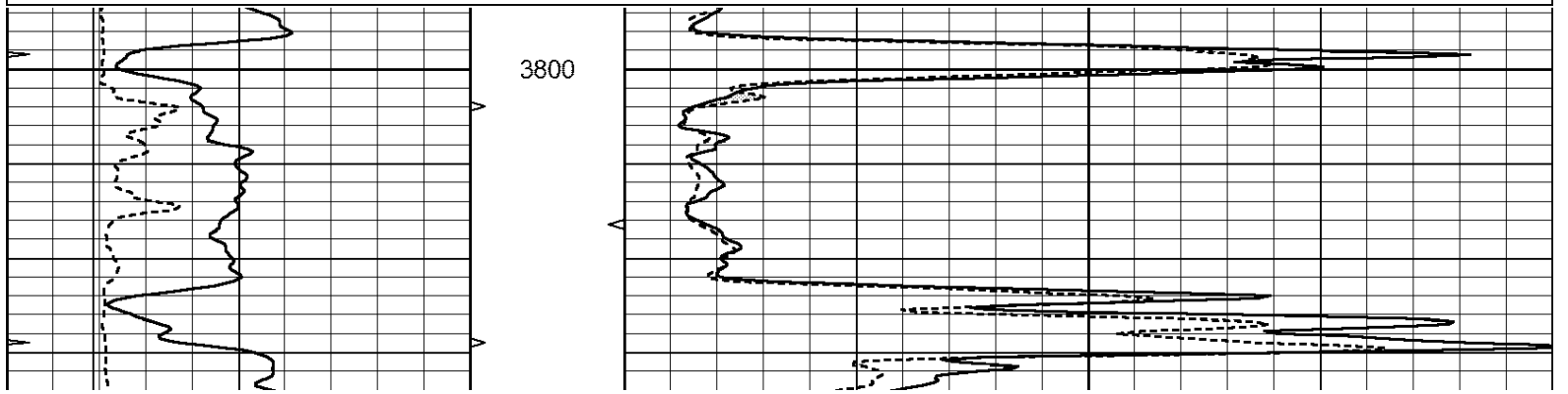


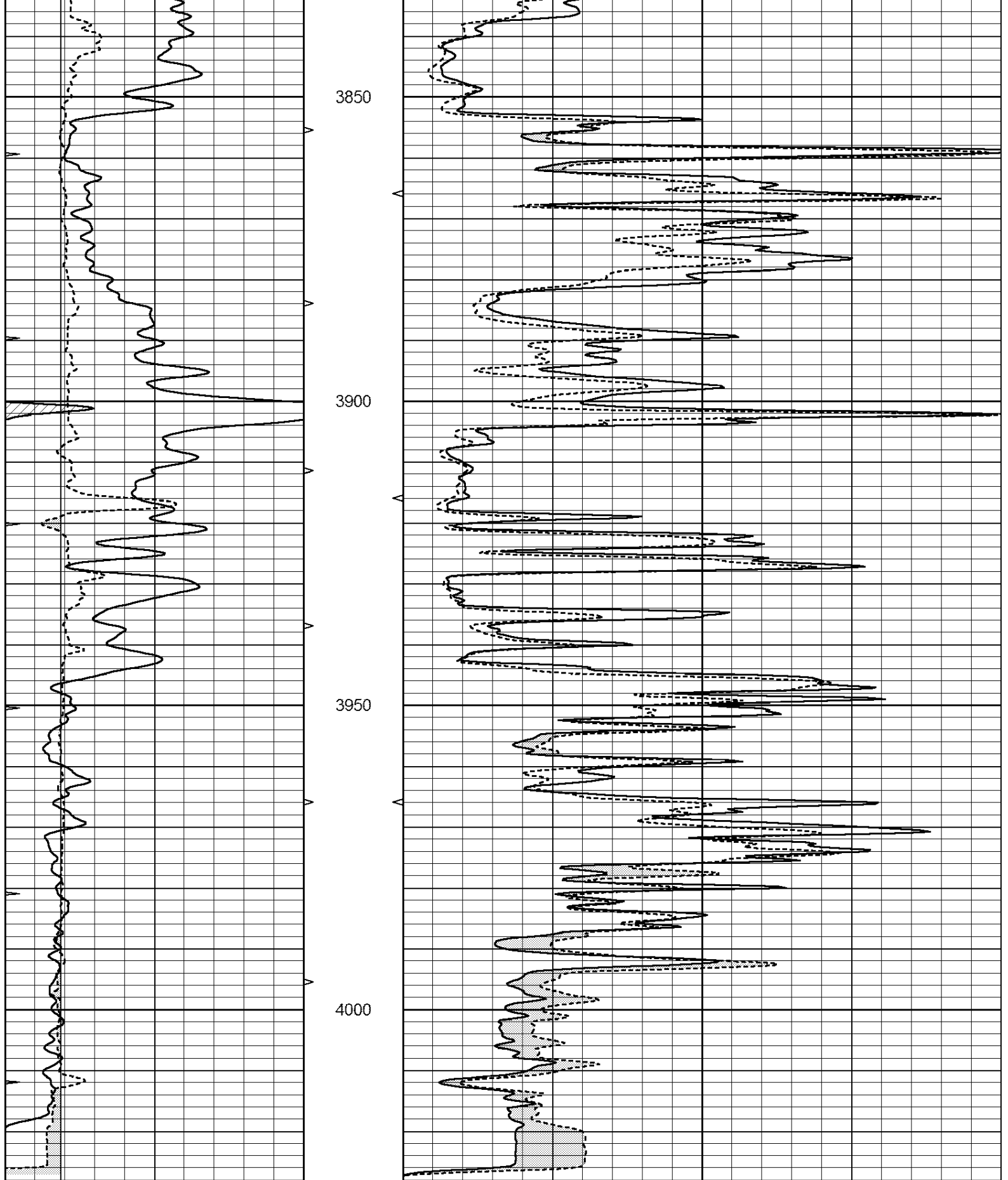


# REPEAT SECTION

Database File: 23884ddn.db  
 Dataset Pathname: pass5.1  
 Presentation Format: \_micro  
 Dataset Creation: Tue Jan 28 21:53:43 2014 by Calc Open-Cased 090629  
 Charted by: Depth in Feet scaled 1:240

0	GAMMA RAY (GAPI)	150	ABHV	0	MEL1.5 (Ohm-m)	40
6	CALIPER (in)	16	10 (ft3)	0 0	MEL2.0 (Ohm-m)	40
0	MINMK	20	TBHV			
			0 (ft3)	10		





0	GAMMA RAY (GAPI)	150	ABHV	0	MEL1.5 (Ohm-m)	40
6	CALIPER (in)	16	10 (ft3)	0	MEL2.0 (Ohm-m)	40
0	MINMK	20	TBHV			
			0 (ft3)	10		

Calibration Report

Database File: 23884ddn.db  
 Dataset Pathname: pass5.1  
 Dataset Creation: Tue Jan 28 21:53:43 2014 by Calc Open-Cased 090629

MICRO Calibration Report

Serial Number: MICRO6  
 Tool Model: PROBE  
 Performed: Tue Jan 28 07:07:33 2014

Caliper Calibration: Gain=5.542      Offset=-0.520  
  
 References      Low Cal      High Cal  
 Readings      8.000      14.000  
                  1.431      2.513

1.5" Calibration: Gain=38.075      Offset=0.000  
  
 References      Low Cal      High Cal  
 Readings      0.000      20.000  
                  0.004      1.196

2" Calibration: Gain=52.000      Offset=-0.600  
  
 References      Low Cal      High Cal  
 Readings      0.000      20.000  
                  0.006      0.913

Gamma Ray Calibration Report

Serial Number: GR6  
 Tool Model: OPEN  
 Performed: Fri Nov 29 08:34:37 2013  
  
 Calibrator Value: 150.0      GAPI  
  
 Background Reading: 0.0      cps  
 Calibrator Reading: 276.0      cps  
  
 Sensitivity: 0.6035      GAPI/cps