



Pioneer Energy Services

Dual Induction Log

15-167-23,931-00-00

API No.

Company **Buffalo Resources**

Well **Matthew No. 1-8**

Field **Dorrance**

County **Russell** State **Kansas**

Location **NW-SE-SW-NW
2207' FNL & 850' FWL**

Sec: **8** Twp: **14S** Rge: **11W**

Other Services
CNL/CDL
MEL

Elevation

Permanent Datum Ground Level Elevation 1723
Log Measured From Kelly Bushing 8 Ft. Above Perm. Datum
Drilling Measured From Kelly Bushing

K.B. 1731
D.F. 1723
G.L. 1723

Date	1/30/14	
Run Number	One	
Depth Driller	3235	
Depth Logger	3234	
Bottom Logged Interval	3233	
Top Log Interval	450	
Casing Driller	8.625 @ 459	
Casing Logger	458	
Bit Size	7.875	
Type Fluid in Hole	Chemical	
Salinity, ppm CL	9,300	
Density / Viscosity	9.1 48	
pH / Fluid Loss	10.0 8.8	
Source of Sample	Flowline	
Rm @ Meas. Temp	.28 @ 48	
Rmf @ Meas. Temp	.21 @ 48	
Rmc @ Meas. Temp	.38 @ 48	
Source of Rmf / Rmc	Charts	
Rm @ BHT	.12 @ 108	
Operating Rig Time	3 1/2 Hours	
Max Rec. Temp. F	108	
Equipment Number	10	
Location	Hays	
Recorded By	J. Henrickson	
Witnessed By	David Gould	

<<< Fold Here >>>

All interpretations are opinions based on inferences from electrical or other measurements and we cannot and do not guarantee the accuracy or correctness of any interpretation, and we shall not, except in the case of gross or willful negligence on our part, be liable or responsible for any loss, costs, damages, or expenses incurred or sustained by anyone resulting from any interpretation made by any of our officers, agents or employees. These interpretations are also subject to our general terms and conditions set out in our current Price Schedule.

Comments

Thank you for using Log-Tech, Inc.
(785) 625-3858

Dorrance Kansas
1/2 East on Grant Lane, North Into

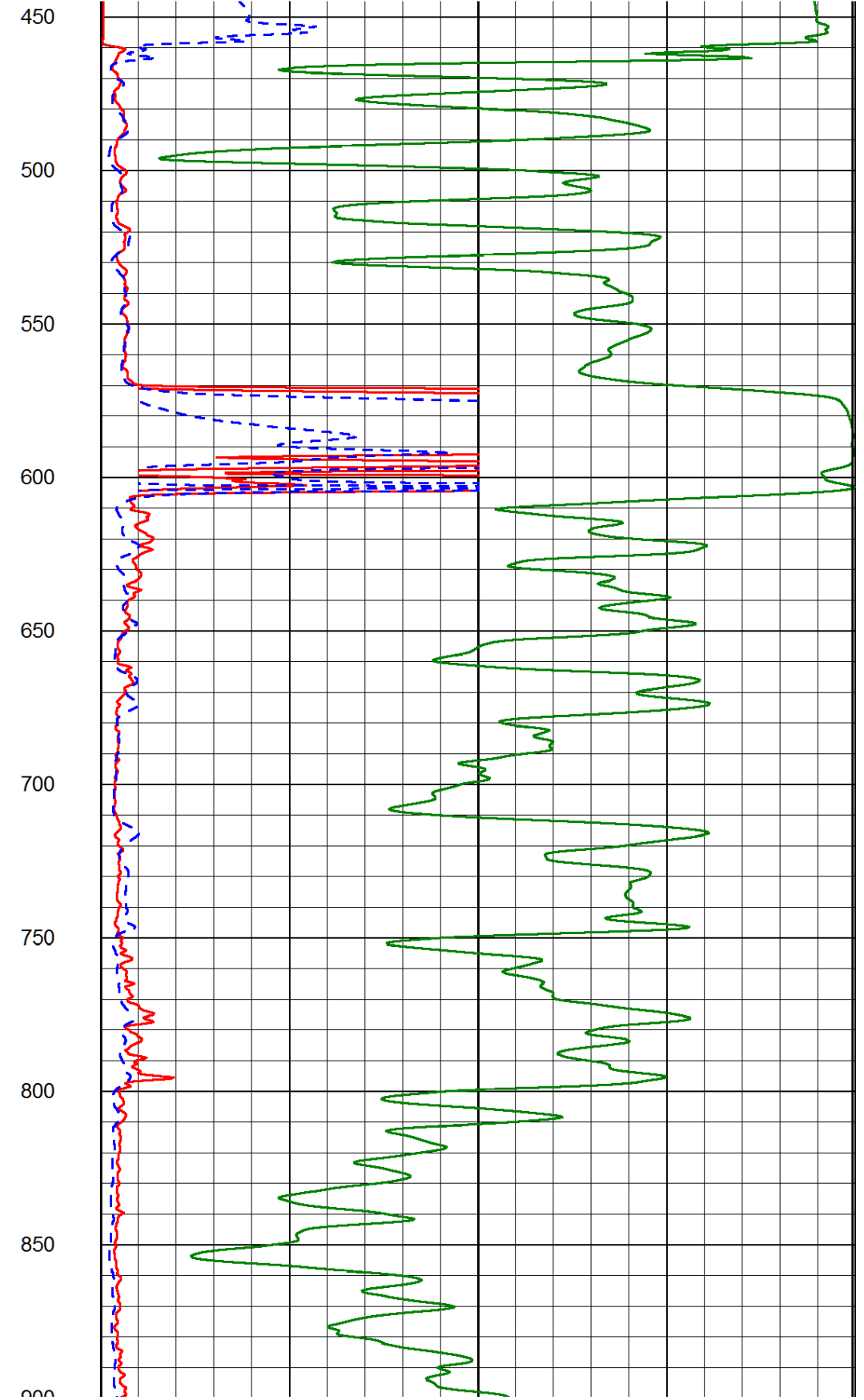
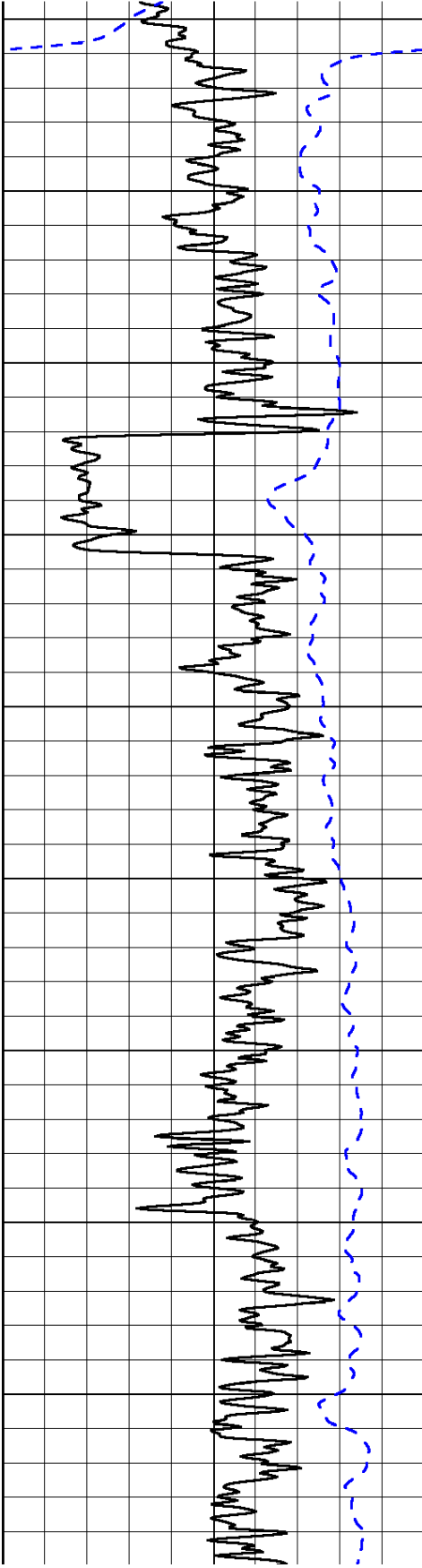
Database File: buffalo_resources_matthew_1_8hd.db
Dataset Pathname: dil/bufstk
Presentation Format: dil2in
Dataset Creation: Thu Jan 30 10:36:38 2014
Charted by: Depth in Feet scaled 1:600

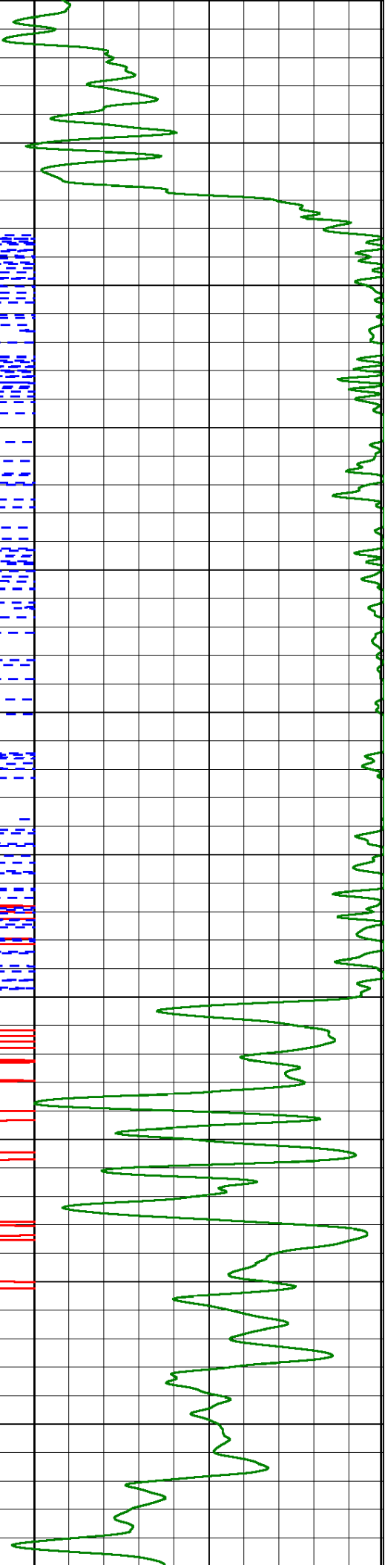
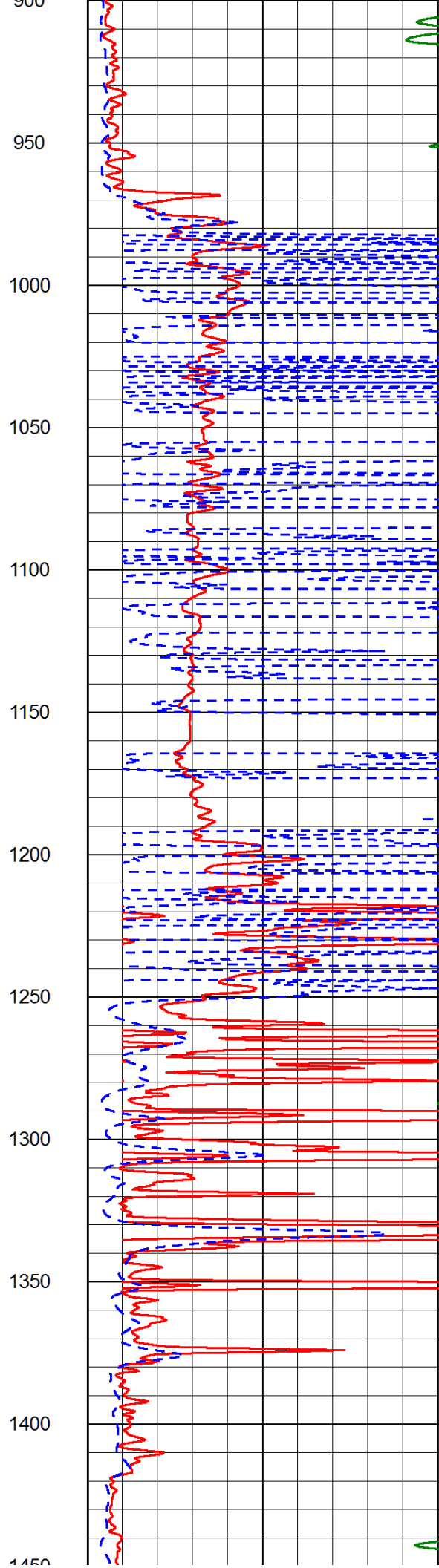
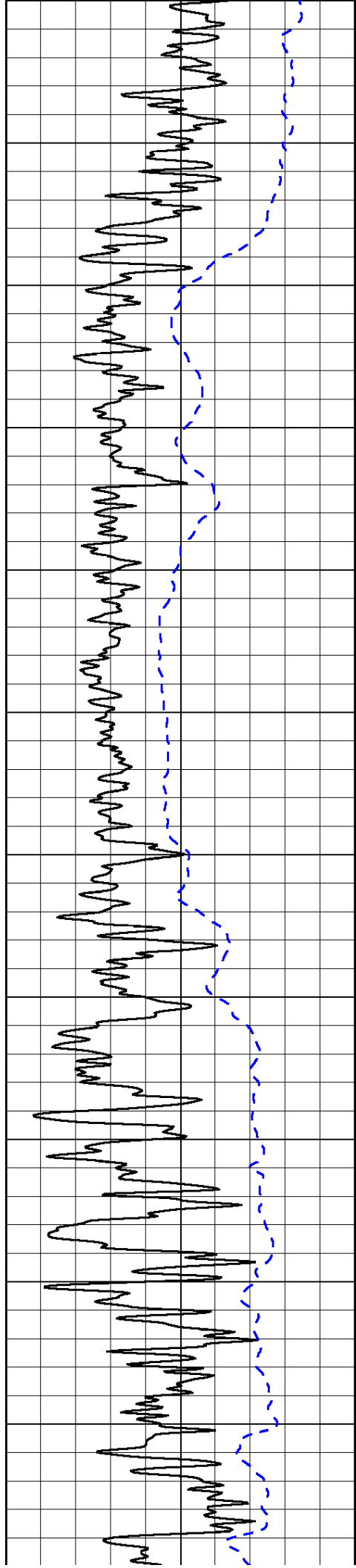
0	Gamma Ray (GAPI)	150
-200	SP (mV)	0

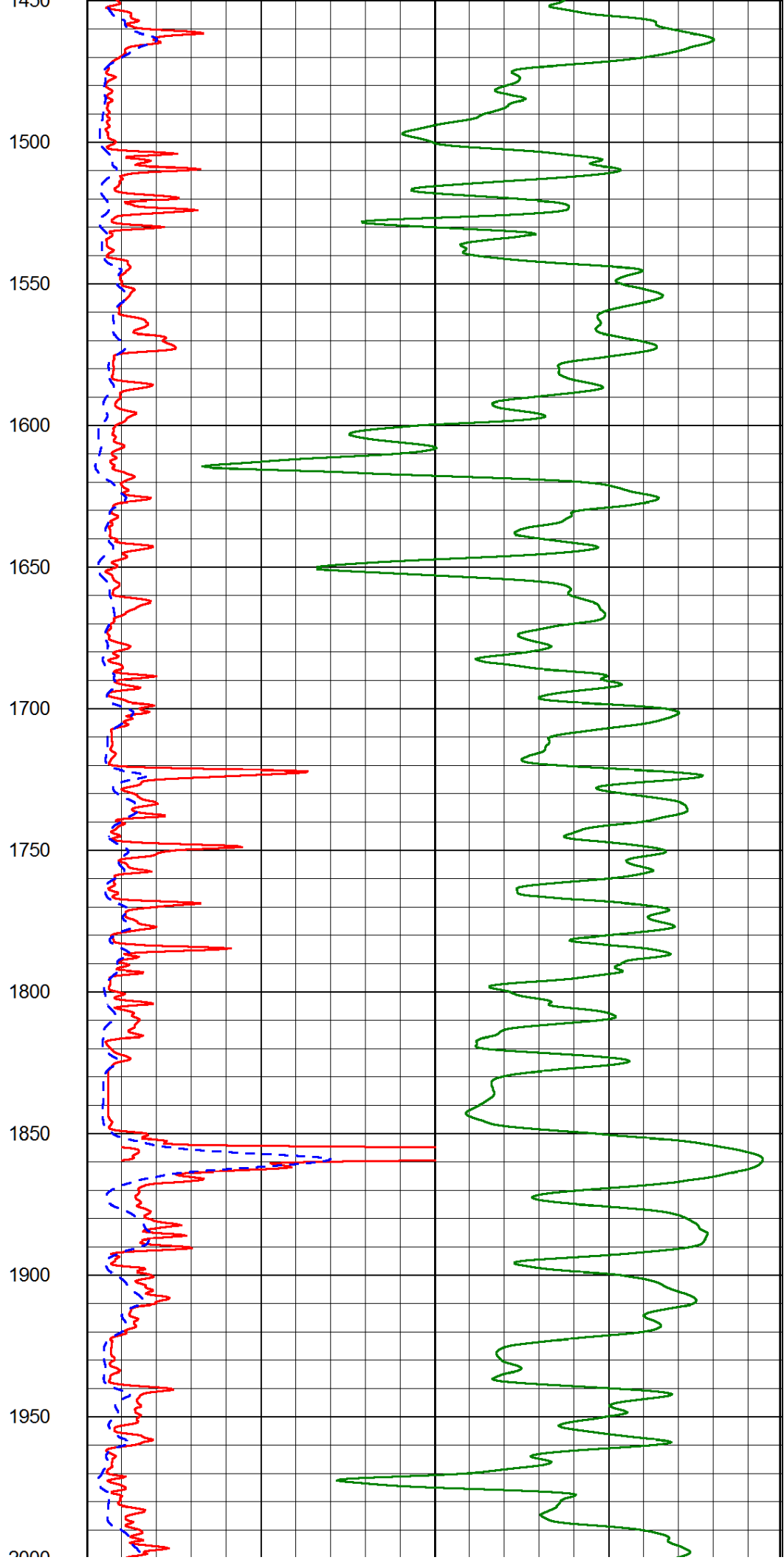
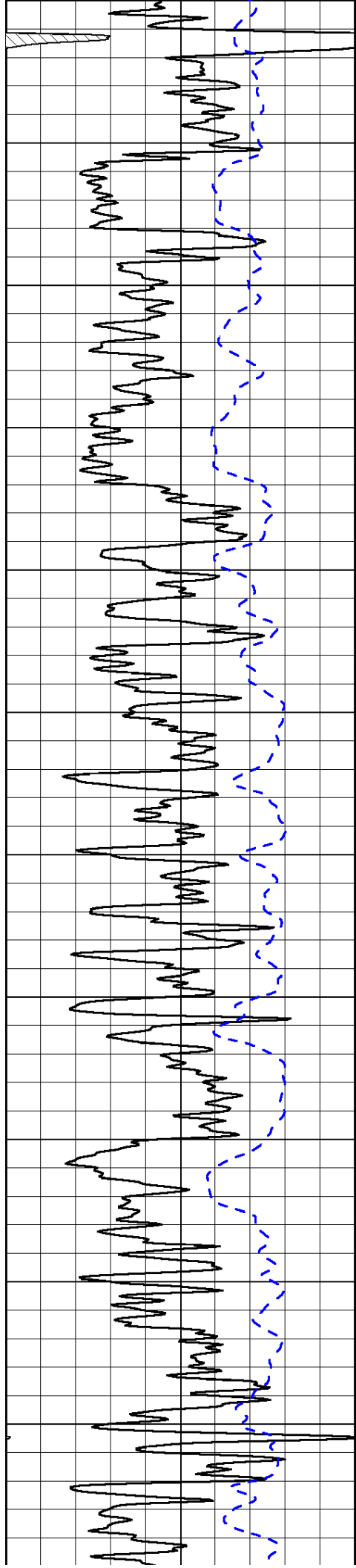
0	Shallow Resistivity (Ohm-m)	50
0	Deep Resistivity (Ohm-m)	50

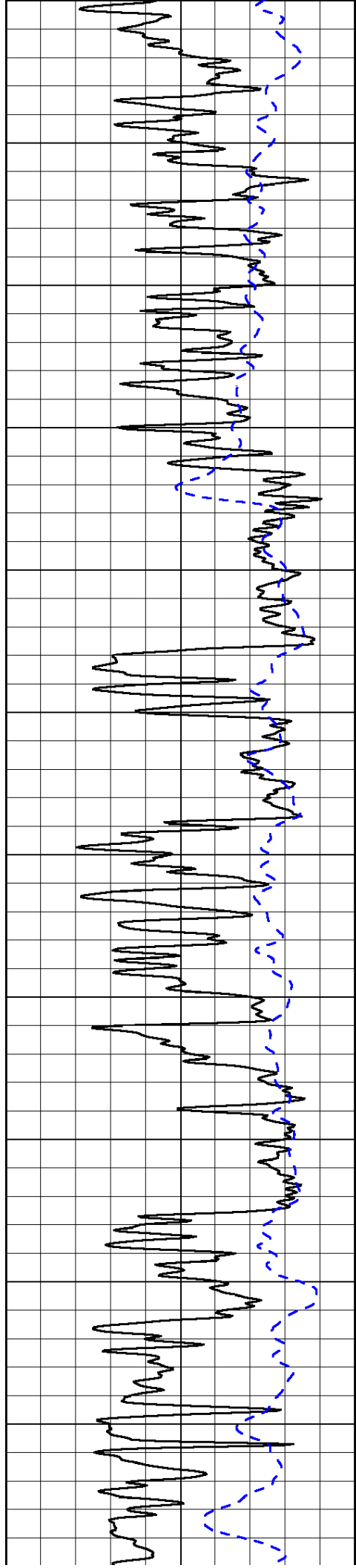
1000	Conductivity (Ohm-m)	0
15000	Line Tension (lb)	0

Shallow Resistivity		
50	(Ohm-m)	500
50 Deep Resistivity (Ohm-m) 500		

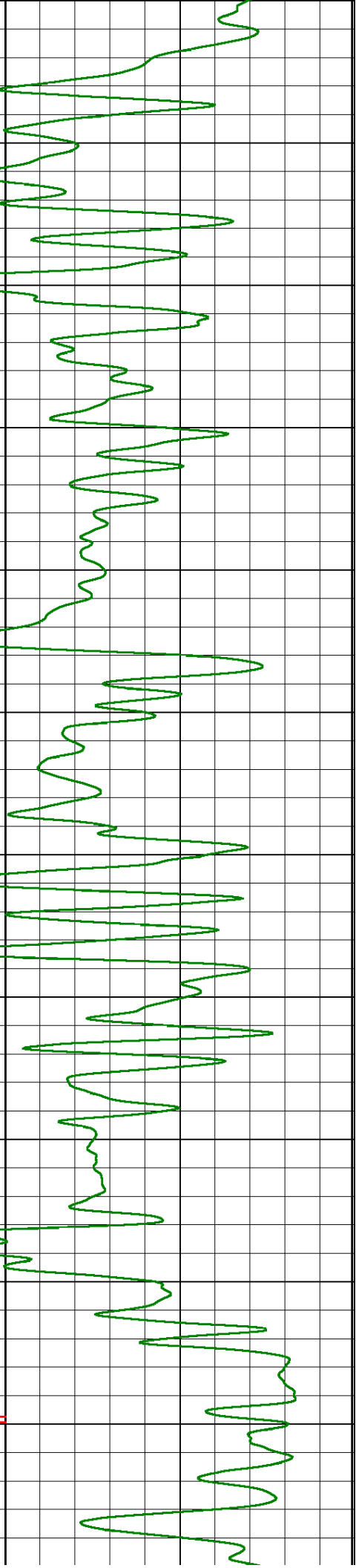
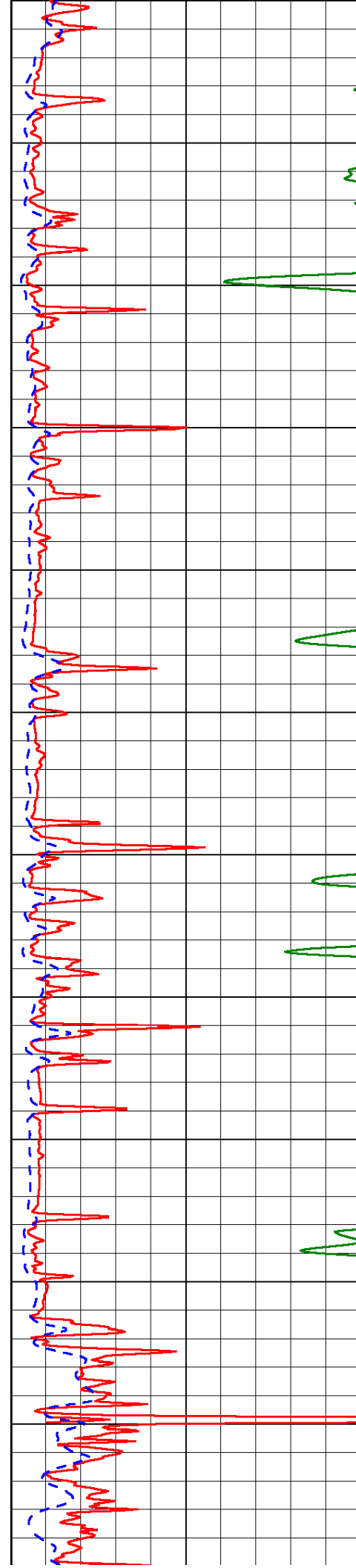


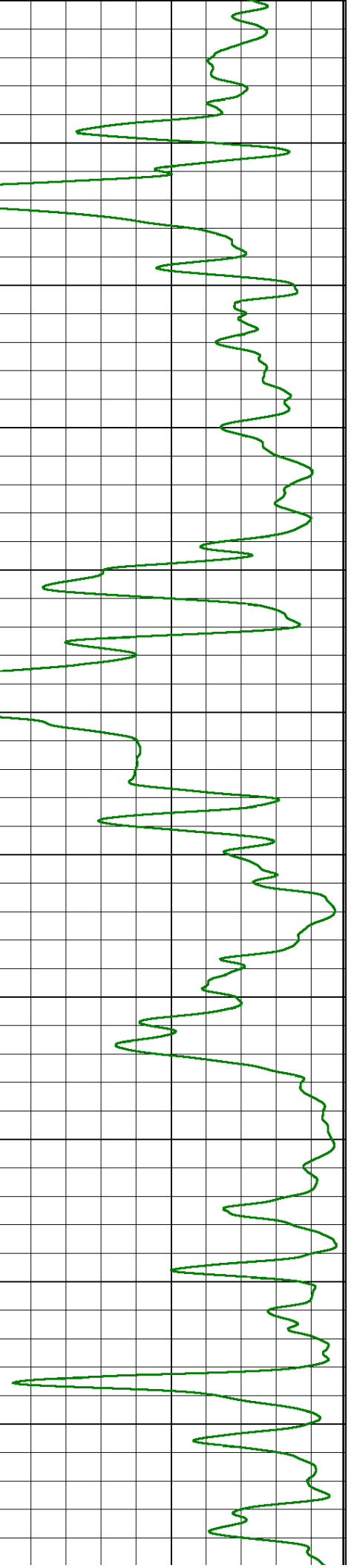
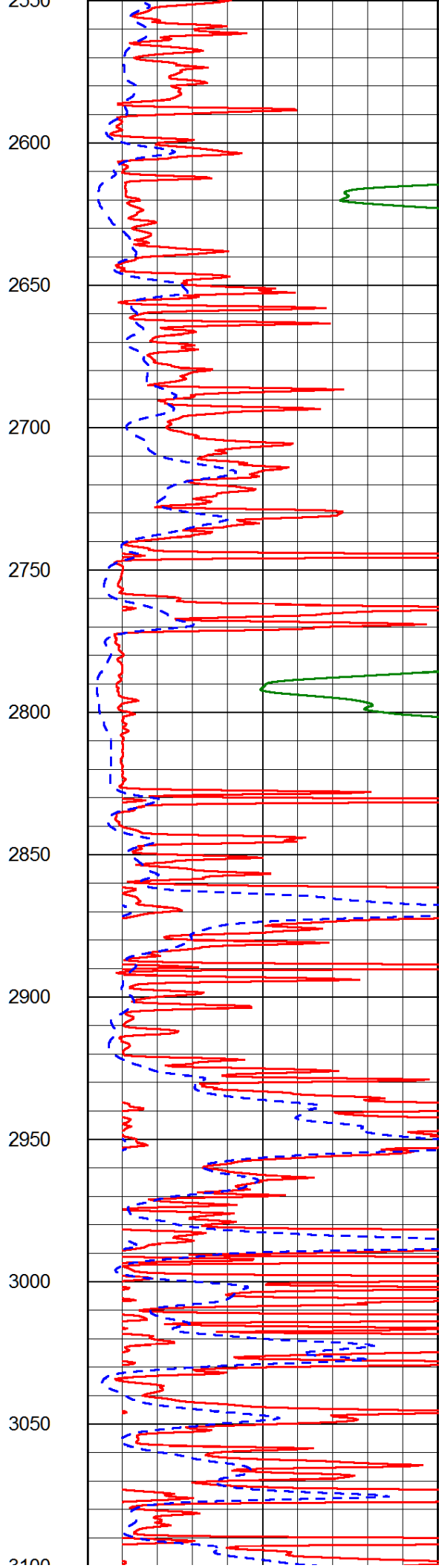
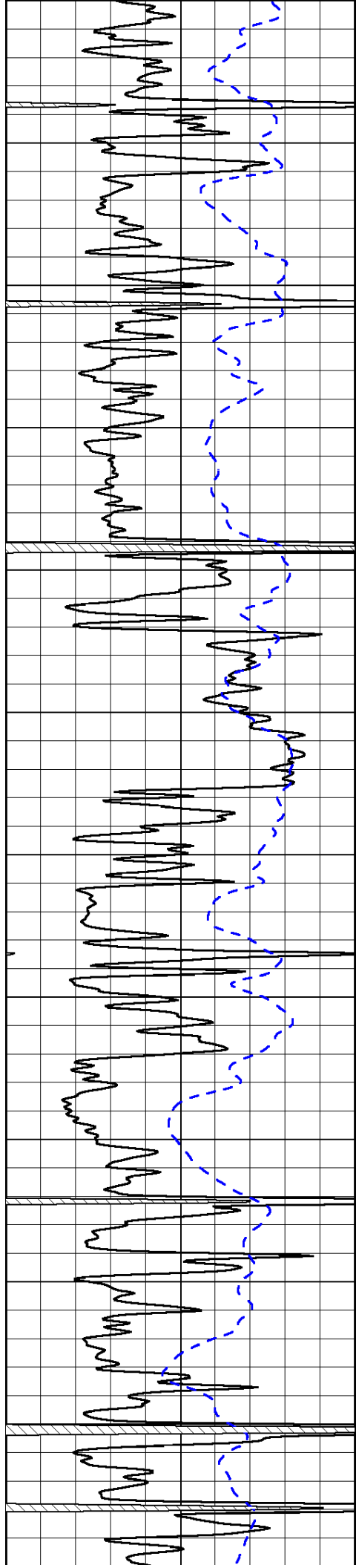


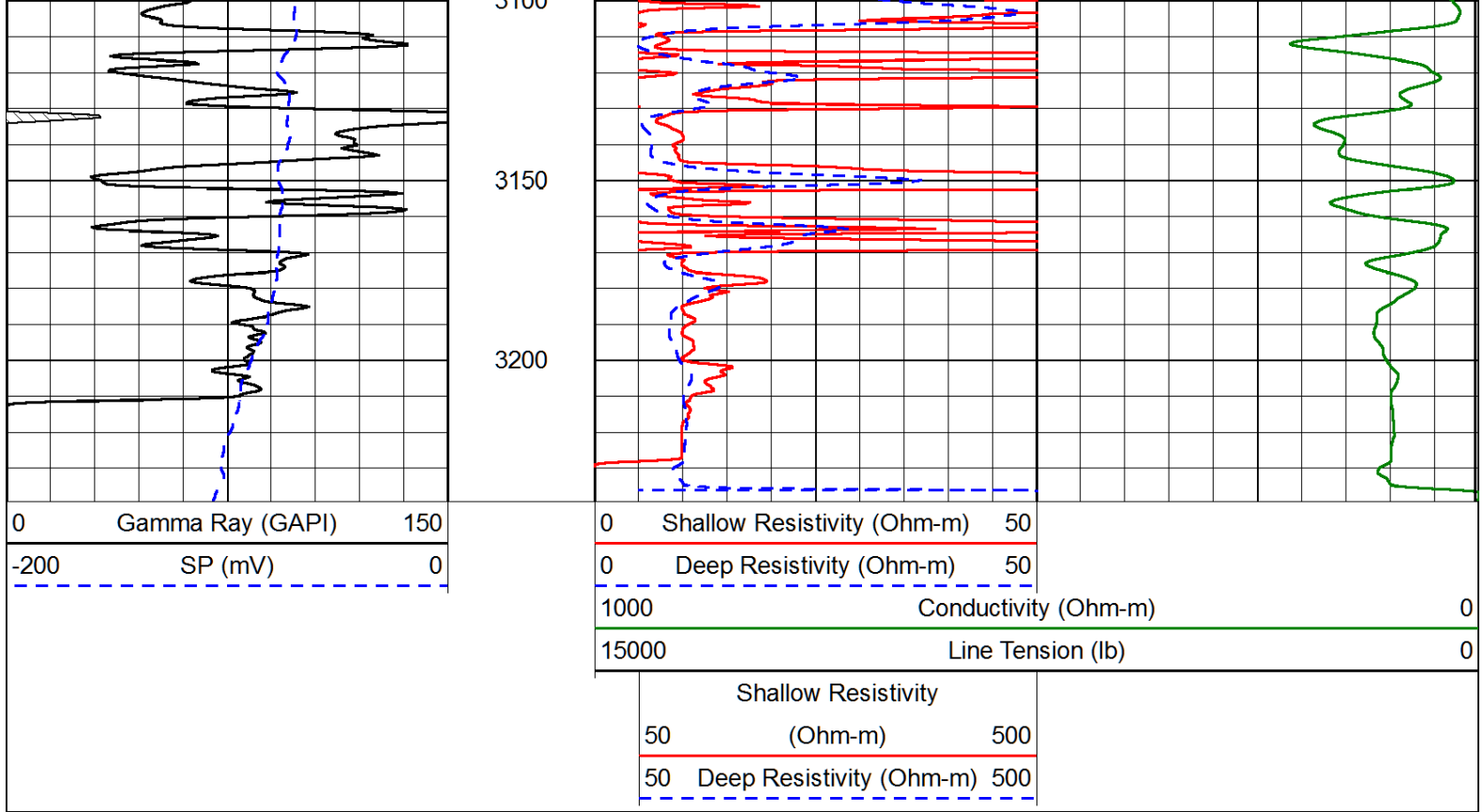




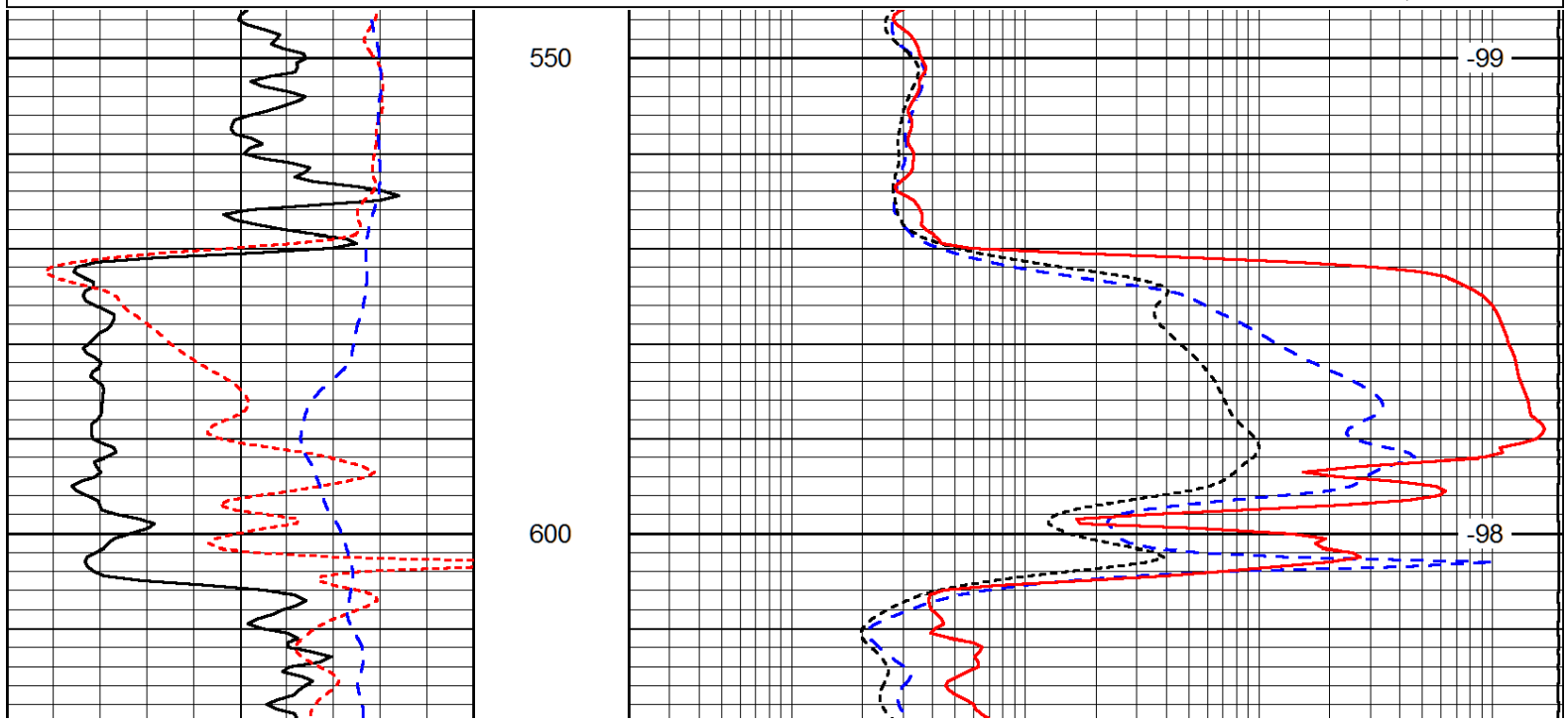
2000
2050
2100
2150
2200
2250
2300
2350
2400
2450
2500
2550

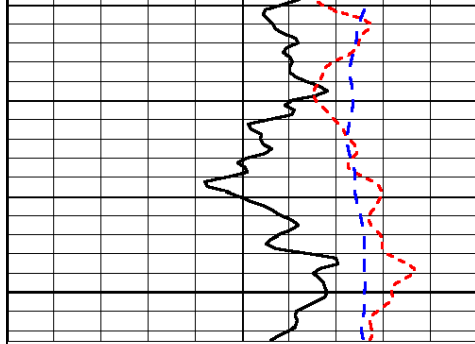






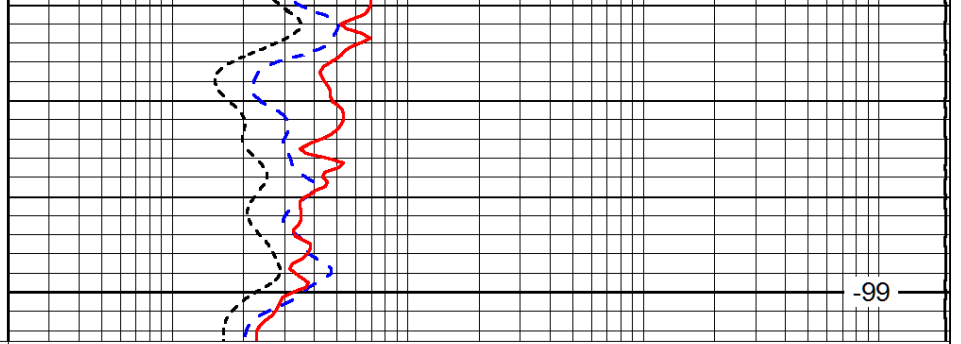
Database File: buffalo_resources_matthew_1_8hd.db
 Dataset Pathname: dil/bufstk
 Presentation Format: dil
 Dataset Creation: Thu Jan 30 10:36:38 2014
 Charted by: Depth in Feet scaled 1:240





650

0	Gamma Ray (GAPI)	150
-160	RXO/RT	40
-200	SP (mV)	0



-99

0.2	Deep Resistivity (Ohm-m)	2000
0.2	Medium Resistivity (Ohm-m)	2000
0.2	Shallow Resistivity (Ohm-m)	2000
10000	Line Tension (lb)	0

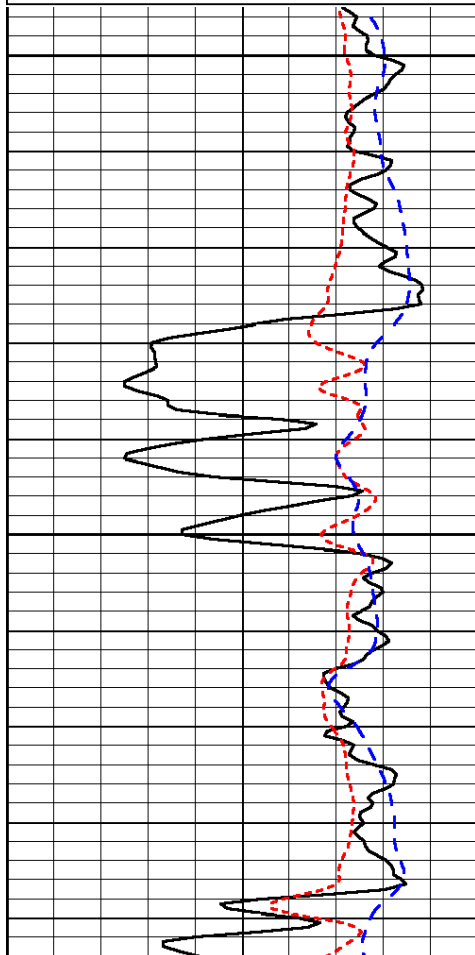
LSPD
(ft/min)

Database File: buffalo_resources_matthew_1_8hd.db
 Dataset Pathname: dil/bufstk
 Presentation Format: dil
 Dataset Creation: Thu Jan 30 10:36:38 2014
 Charted by: Depth in Feet scaled 1:240

0	Gamma Ray (GAPI)	150
-160	RXO/RT	40
-200	SP (mV)	0

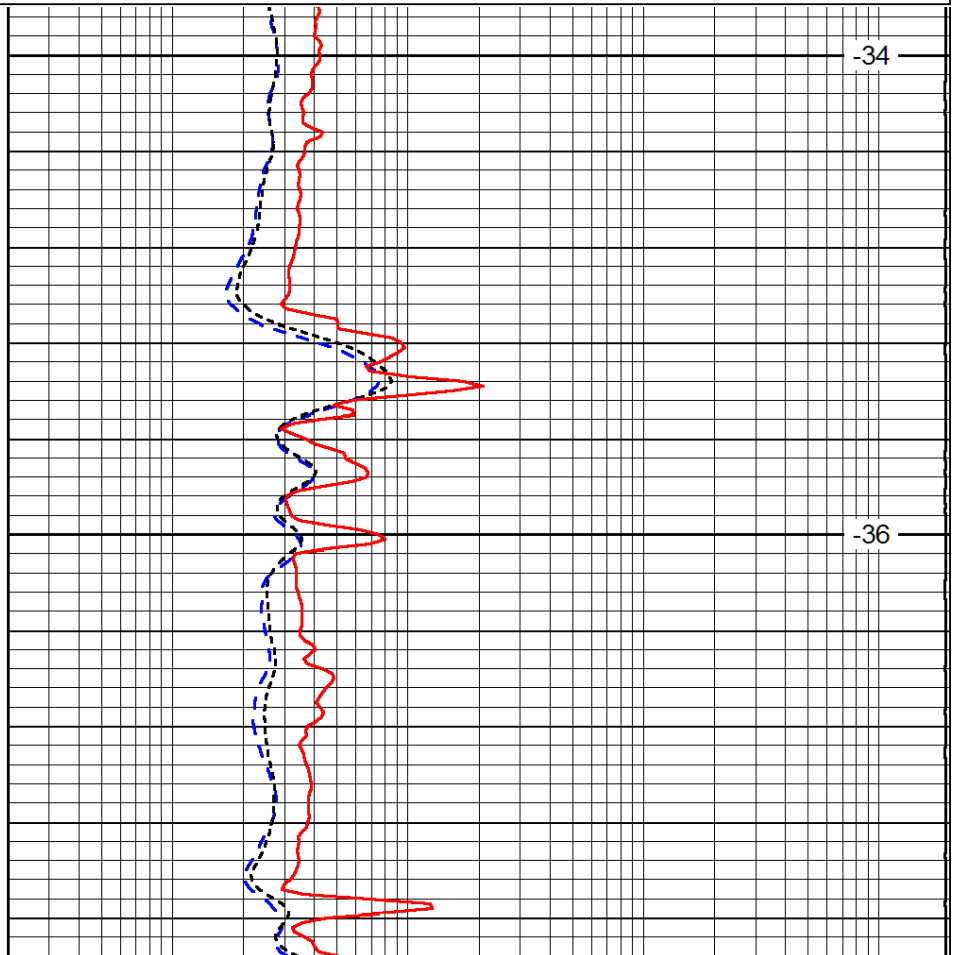
0.2	Deep Resistivity (Ohm-m)	2000
0.2	Medium Resistivity (Ohm-m)	2000
0.2	Shallow Resistivity (Ohm-m)	2000
10000	Line Tension (lb)	0

LSPD
(ft/min)



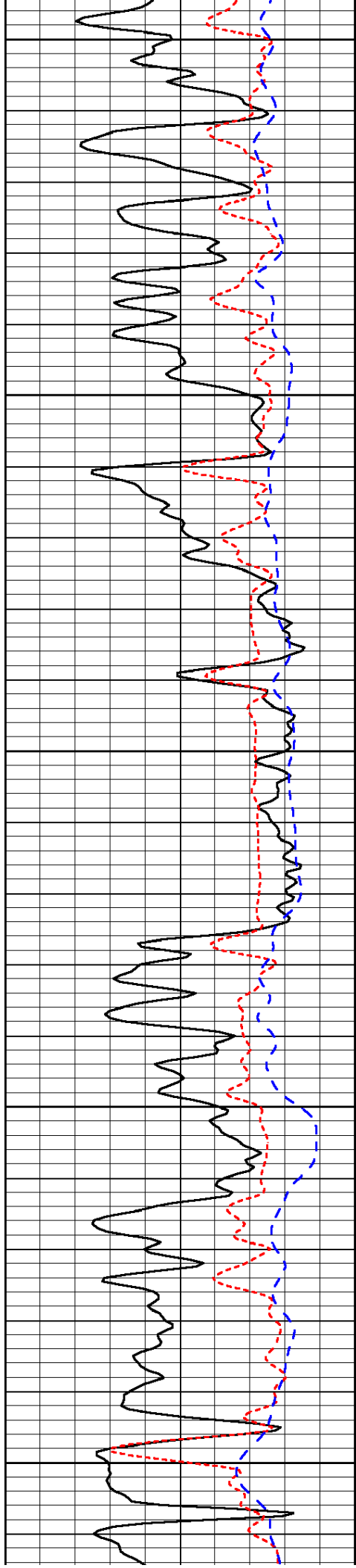
2200

2250



-34

-36



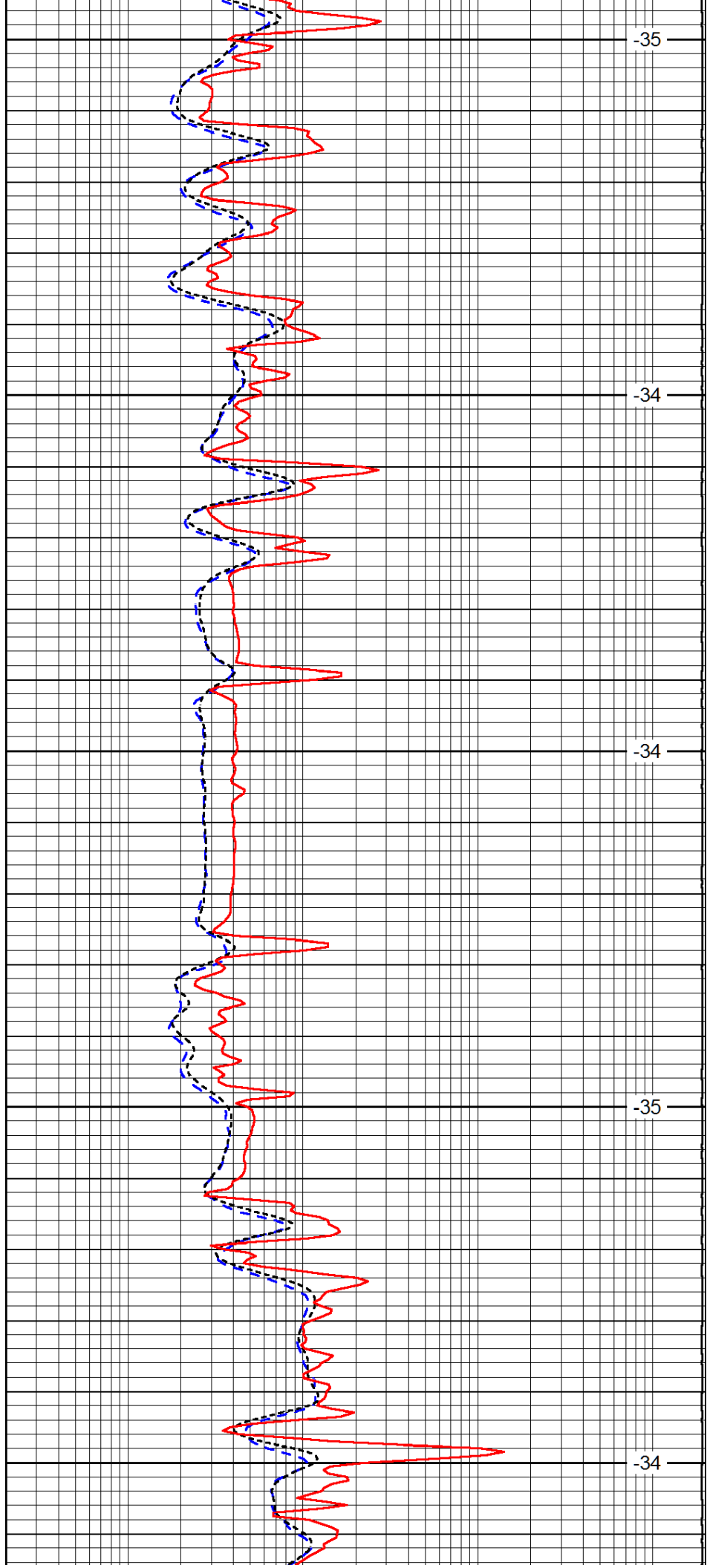
2300

2350

2400

2450

2500



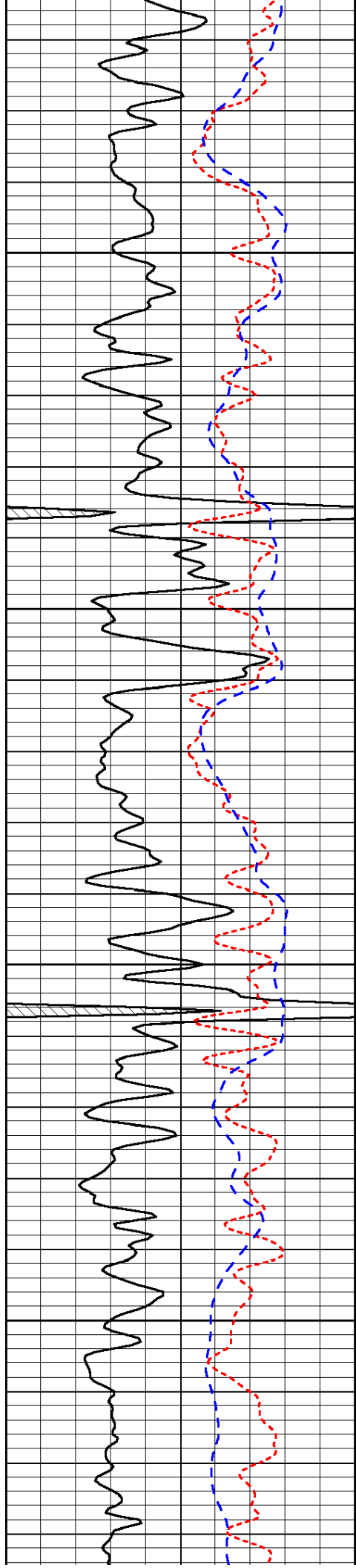
-35

-34

-34

-35

-34

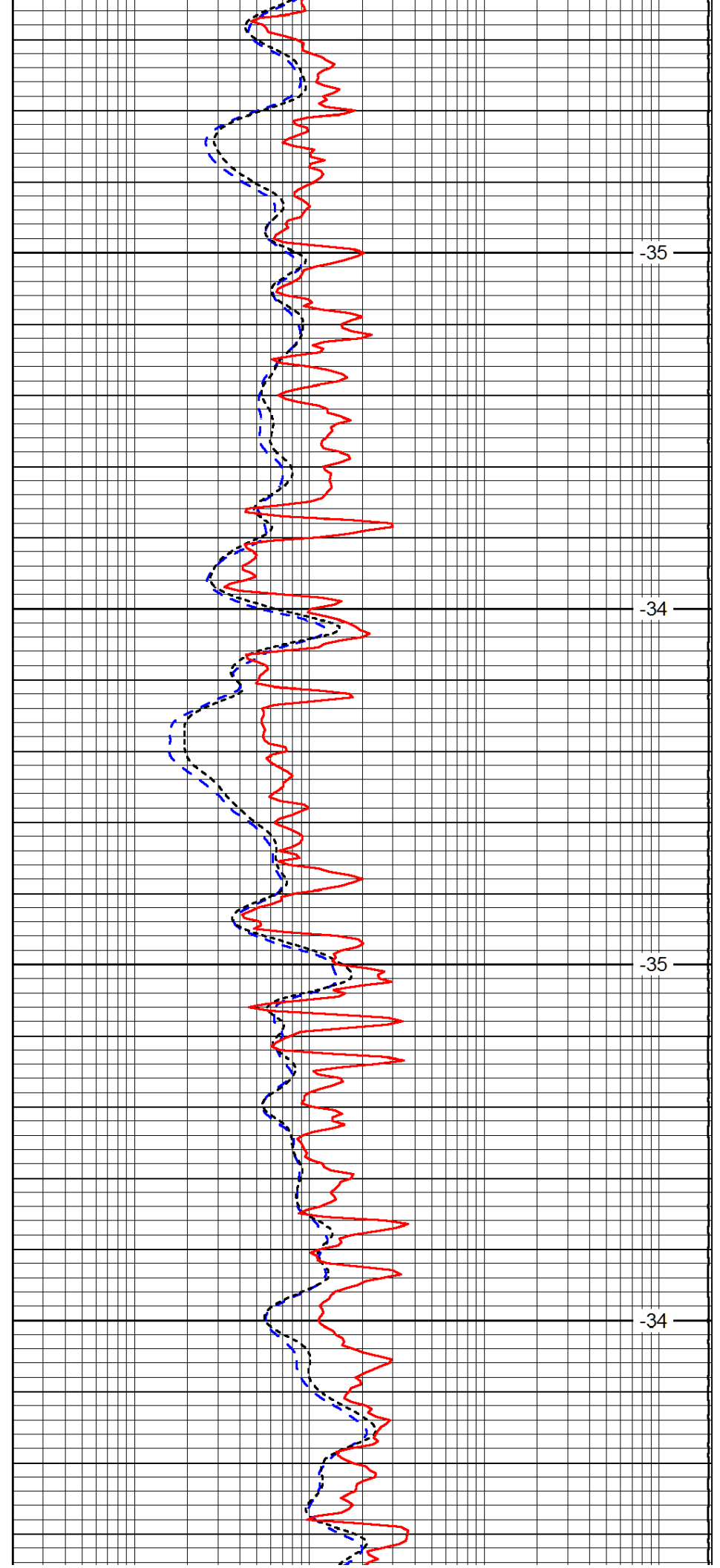


2550

2600

2650

2700

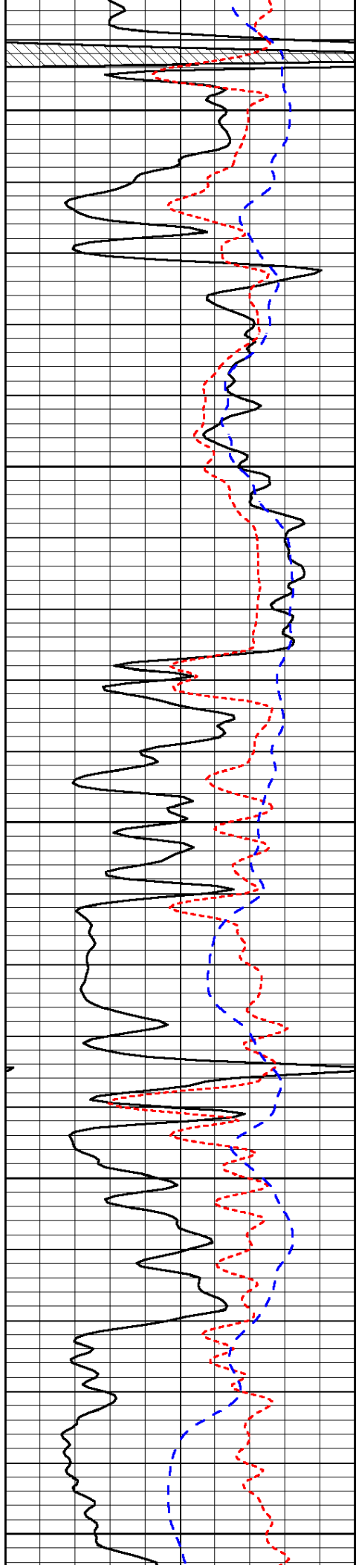


-35

-34

-35

-34



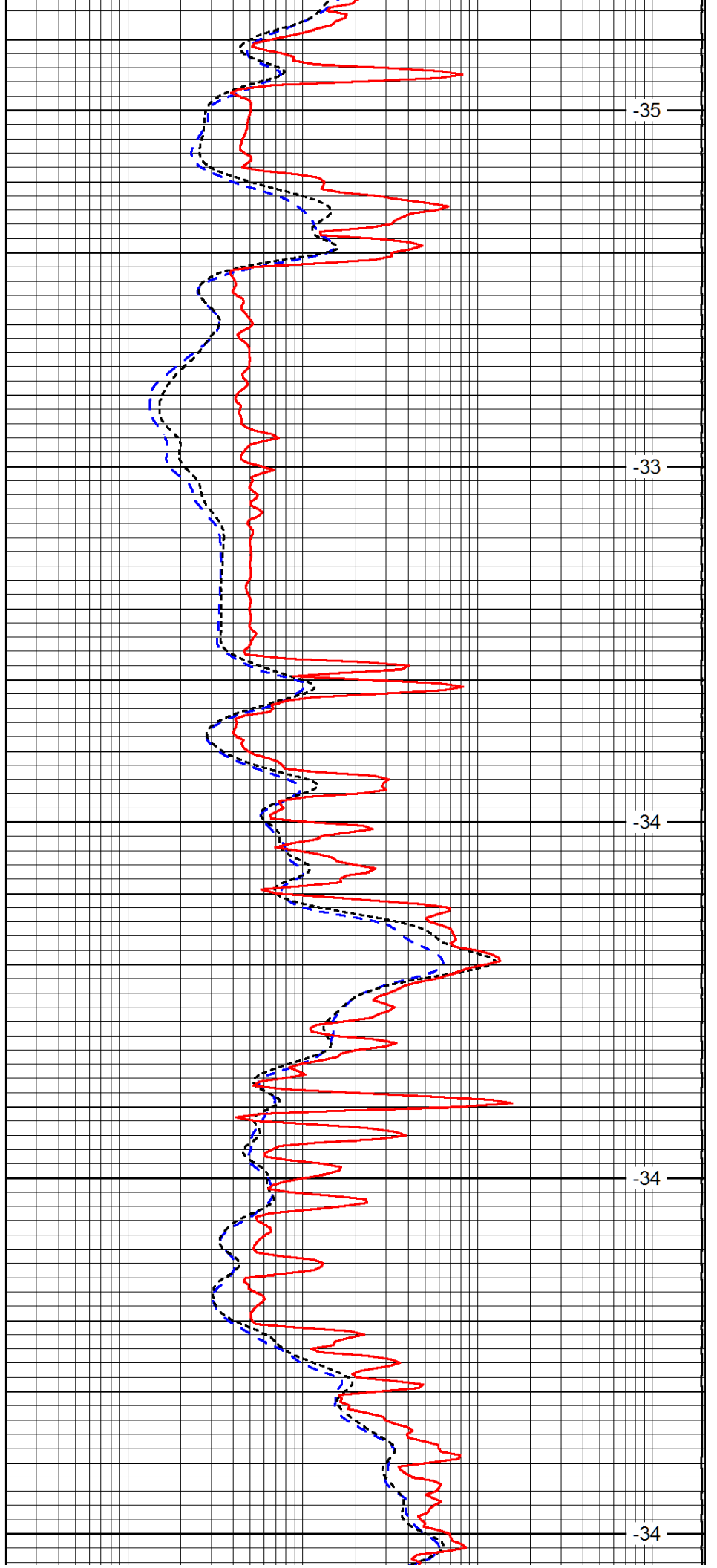
2750

2800

2850

2900

2950



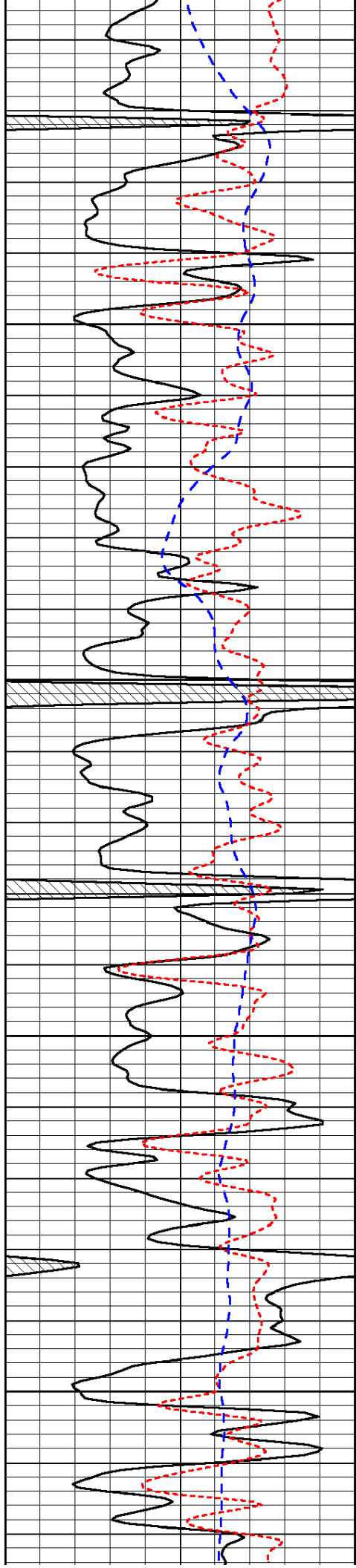
-35

-33

-34

-34

-34

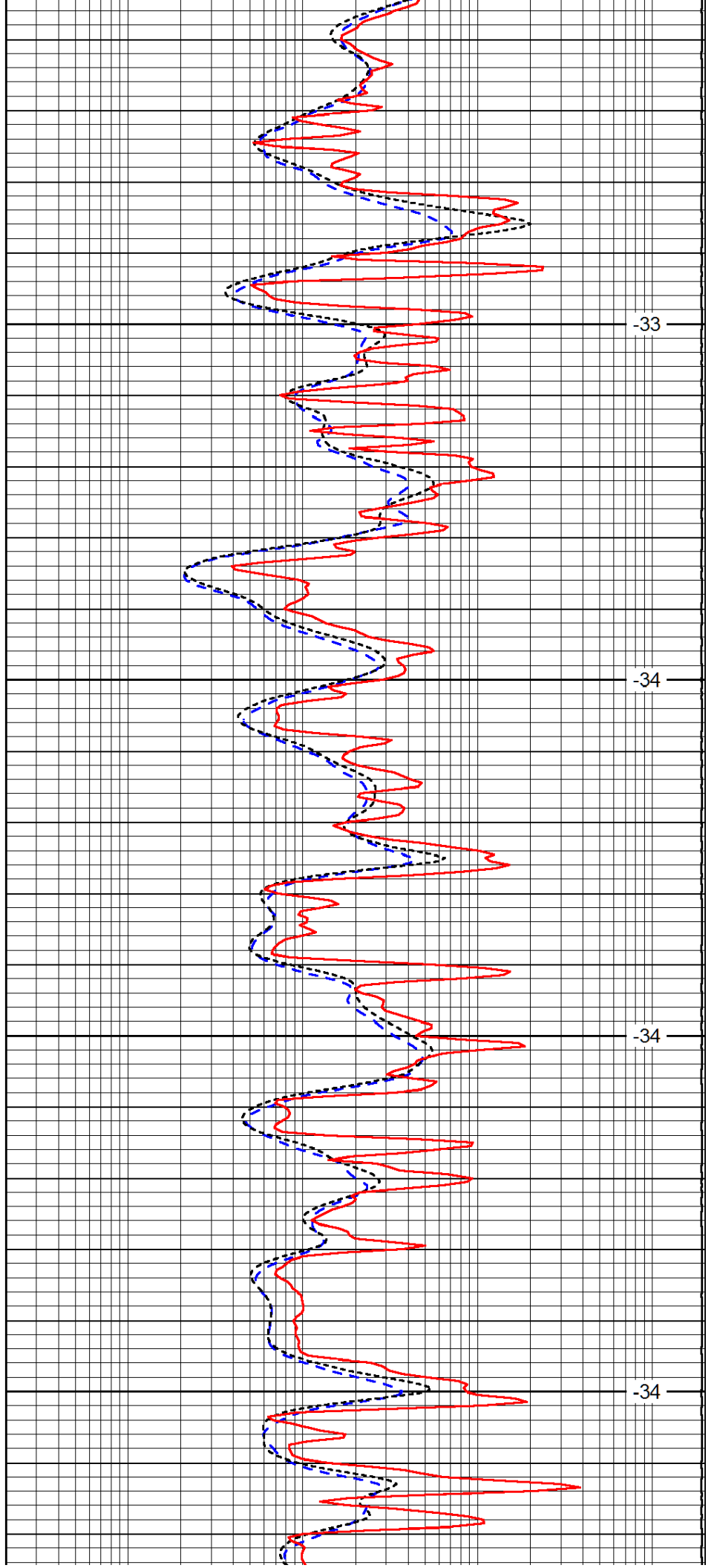


3000

3050

3100

3150

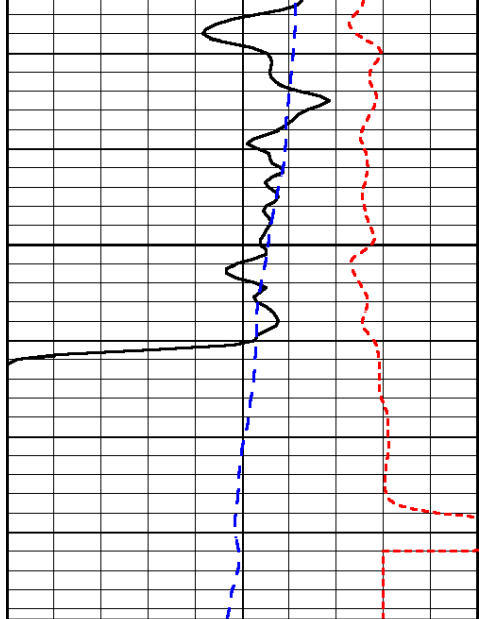


-33

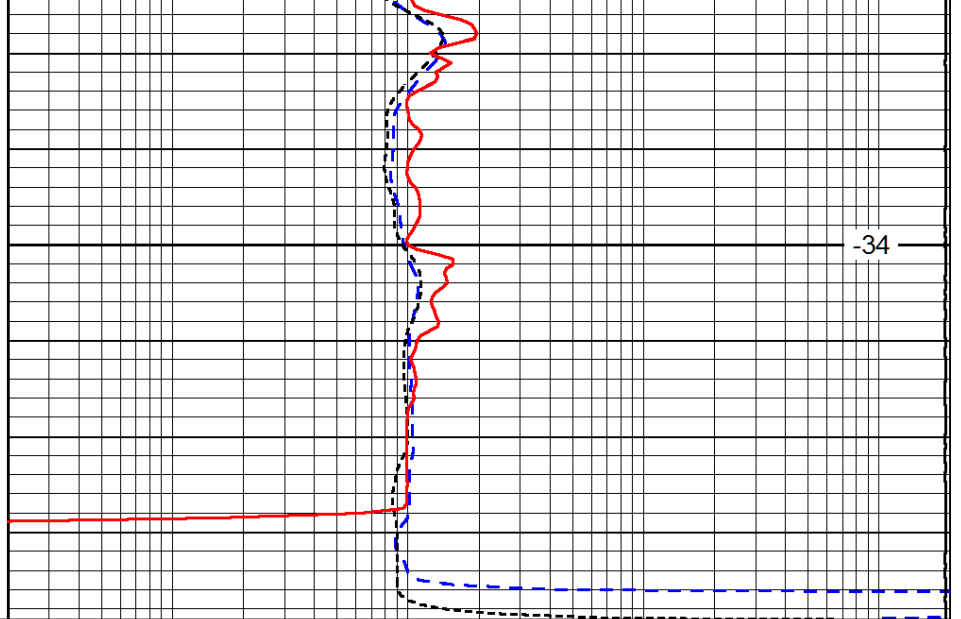
-34

-34

-34



3200



-34

0	Gamma Ray (GAPI)	150
-160	RXO/RT	40
-200	SP (mV)	0

0.2	Deep Resistivity (Ohm-m)	2000
0.2	Medium Resistivity (Ohm-m)	2000
0.2	Shallow Resistivity (Ohm-m)	2000
10000	Line Tension (lb)	0

LSPD
(ft/min)