



Pioneer Energy Services

## Dual Compensated Porosity Log

**Company** Buffalo Resources  
**Well** Matthew No. 1-8  
**Field** Dorrance  
**County** Russell **State** Kansas  
**Location** NW-SE-SW-NW  
 2207' FNL & 850' FWL  
 Sec: 8 Twp: 14S Rge: 11W  
 Other Services  
 DILMEL

API No. 15-167-23,931-00-00

Permanent Datum Ground Level Elevation 1723  
 Log Measured From Kelly Bushing 8 Ft. Above Perm. Datum  
 Drilling Measured From Kelly Bushing  
 Date 1/30/14  
 Elevation  
 K.B. 1731  
 D.F. 1723  
 G.L. 1723

Run Number	One
Type Log	CNL / CDL
Depth Driller	3235
Depth Logger	3234
Bottom Logged Interval	3213
Top Logged Interval	2200
Type Fluid In Hole	Chemical
Salinity, PPM CL	9,300
Density	9.1
Level	Full
Max. Rec. Temp. F	108
Operating Rig Time	3 1/2 Hours
Equipment -- Location	10 Hays
Recorded By	J. Henrickson
Witnessed By	David Gould

Borehole Record				Casing Record			
Run No.	Bit	From	To	Size	Wgt.	From	To
One	12.25	00	459	8.625	23#	00	459
Two	7.875	459	TD				

<<< Fold Here >>>

All interpretations are opinions based on inferences from electrical or other measurements and we cannot and do not guarantee the accuracy or correctness of any interpretation, and we shall not, except in the case of gross or willful negligence on our part, be liable or responsible for any loss, costs, damages, or expenses incurred or sustained by anyone resulting from any interpretation made by any of our officers, agents or employees. These interpretations are also subject to our general terms and conditions set out in our current Price Schedule.

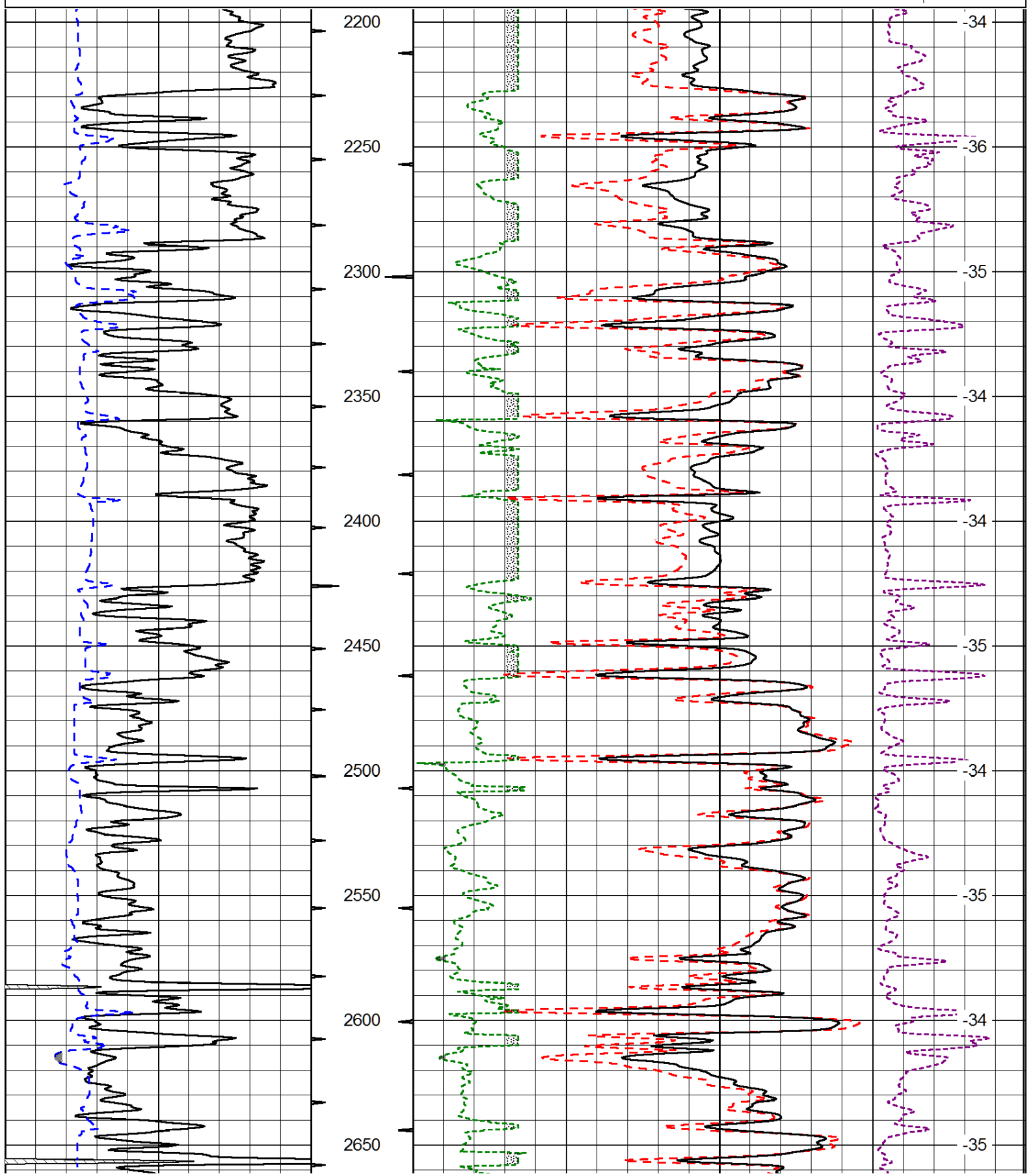
Comments

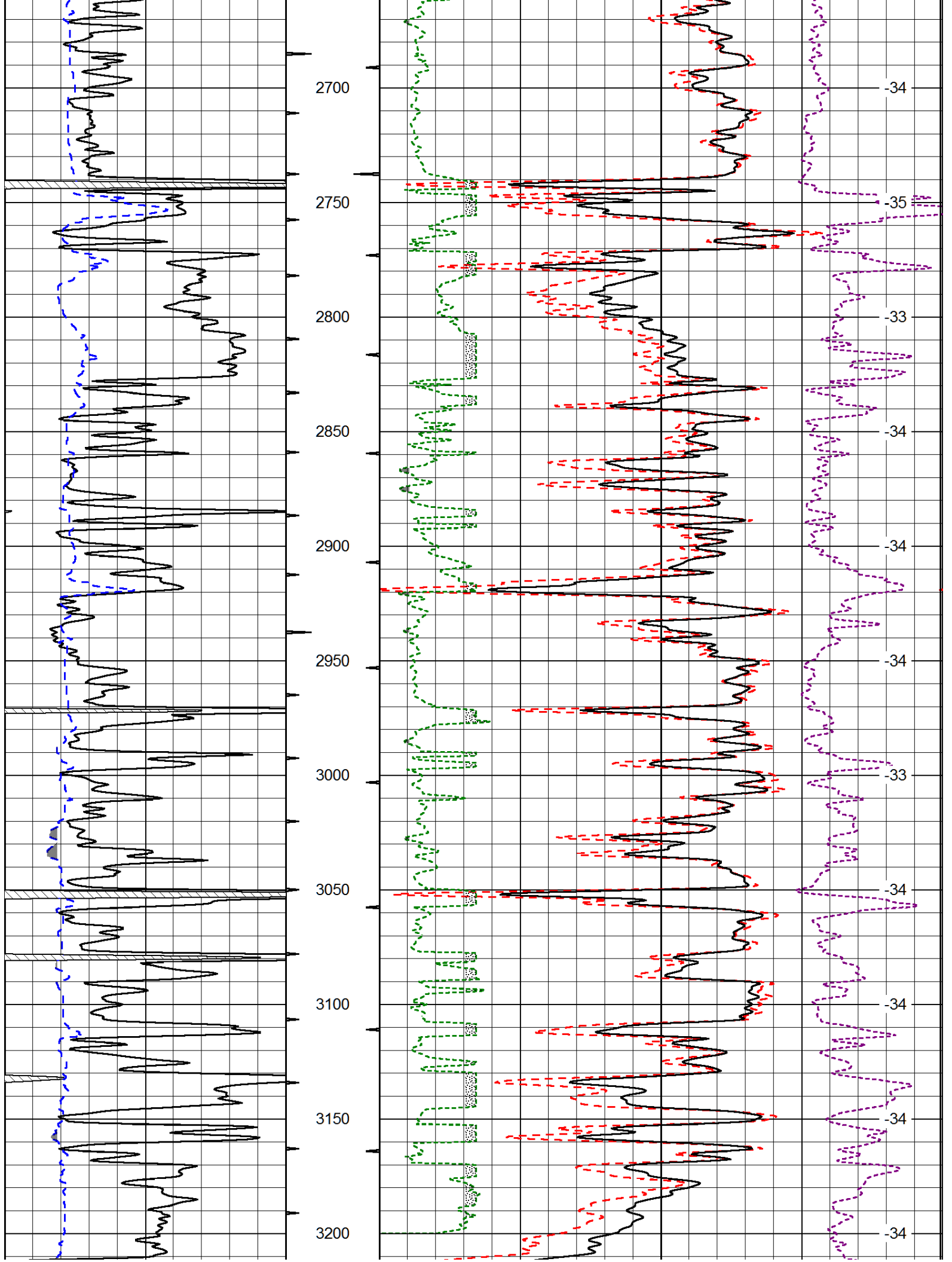
Thank you for using Log-Tech, Inc.  
 (785) 625-3858  
  
 Dorrance Kansas  
 1/2 East on Grant Lane, North Into

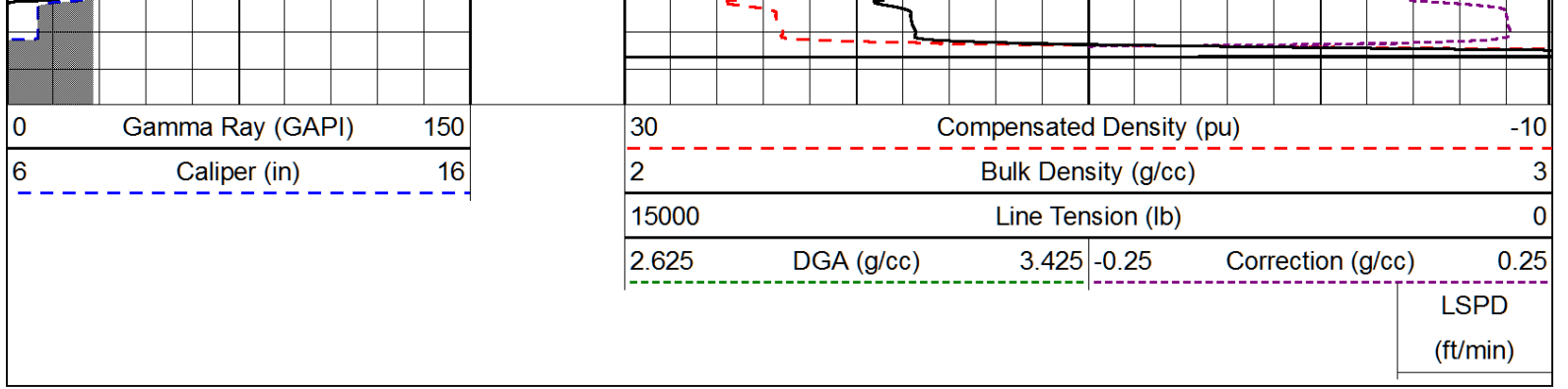
Database File: buffalo\_resources\_matthew\_1\_8hd.db  
 Dataset Pathname: dil/bufstk  
 Presentation Format: cdl  
 Dataset Creation: Thu Jan 30 10:36:38 2014  
 Charted by: Depth in Feet scaled 1:600

0	Gamma Ray (GAPI)	150
6	Caliper (in)	16

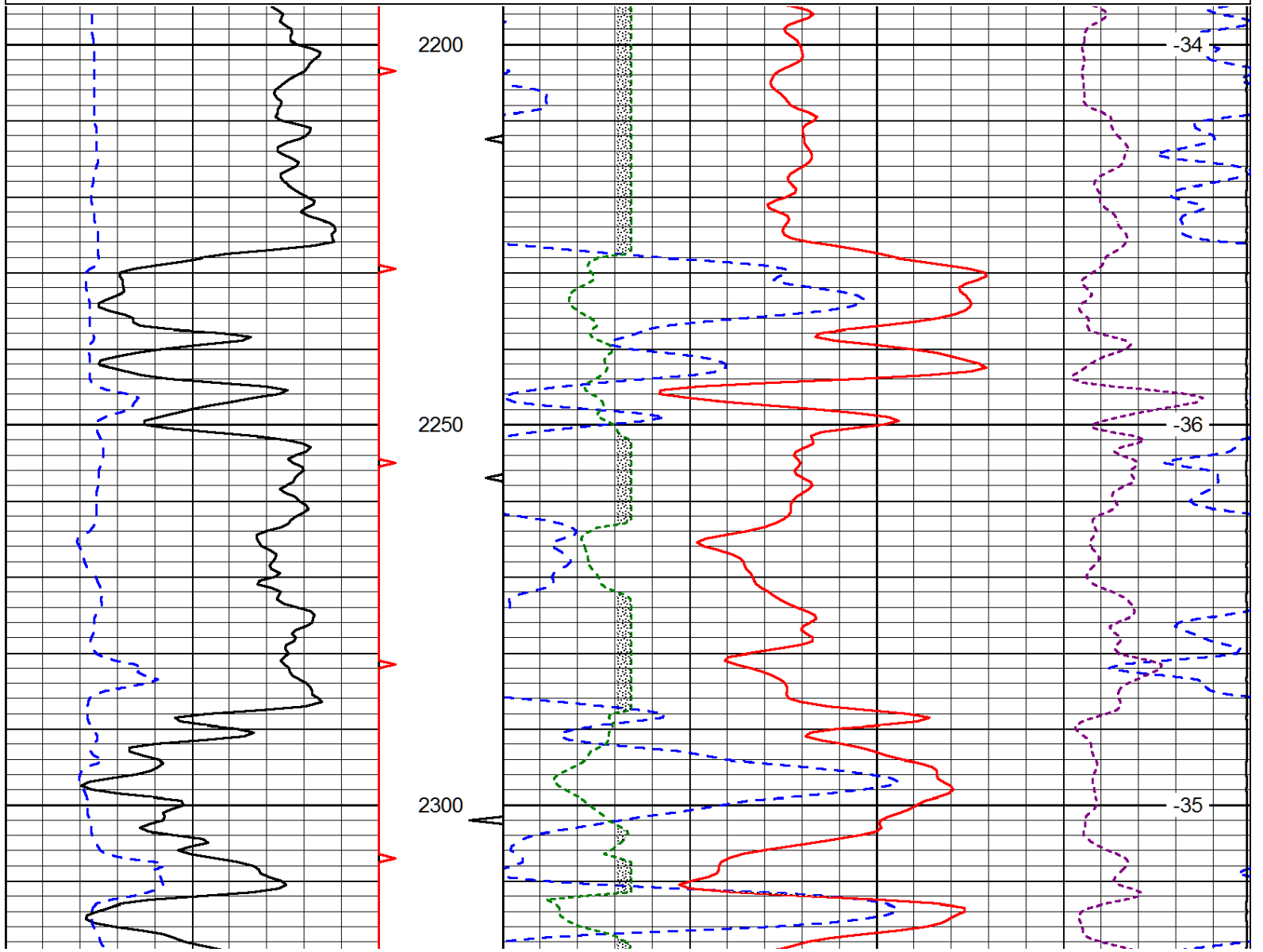
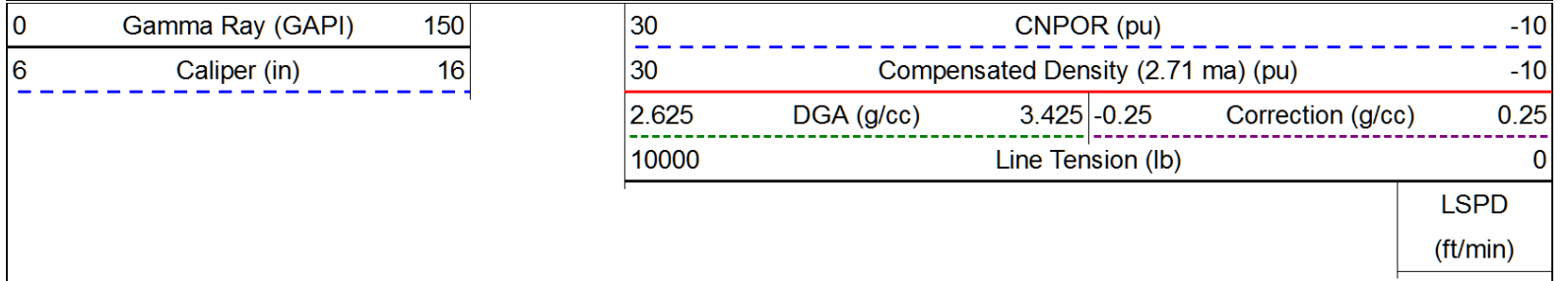
30	Compensated Density (pu)		-10
2	Bulk Density (g/cc)		3
15000	Line Tension (lb)		0
2.625	DGA (g/cc)	3.425	-0.25
			Correction (g/cc)
			0.25
			LSPD (ft/min)

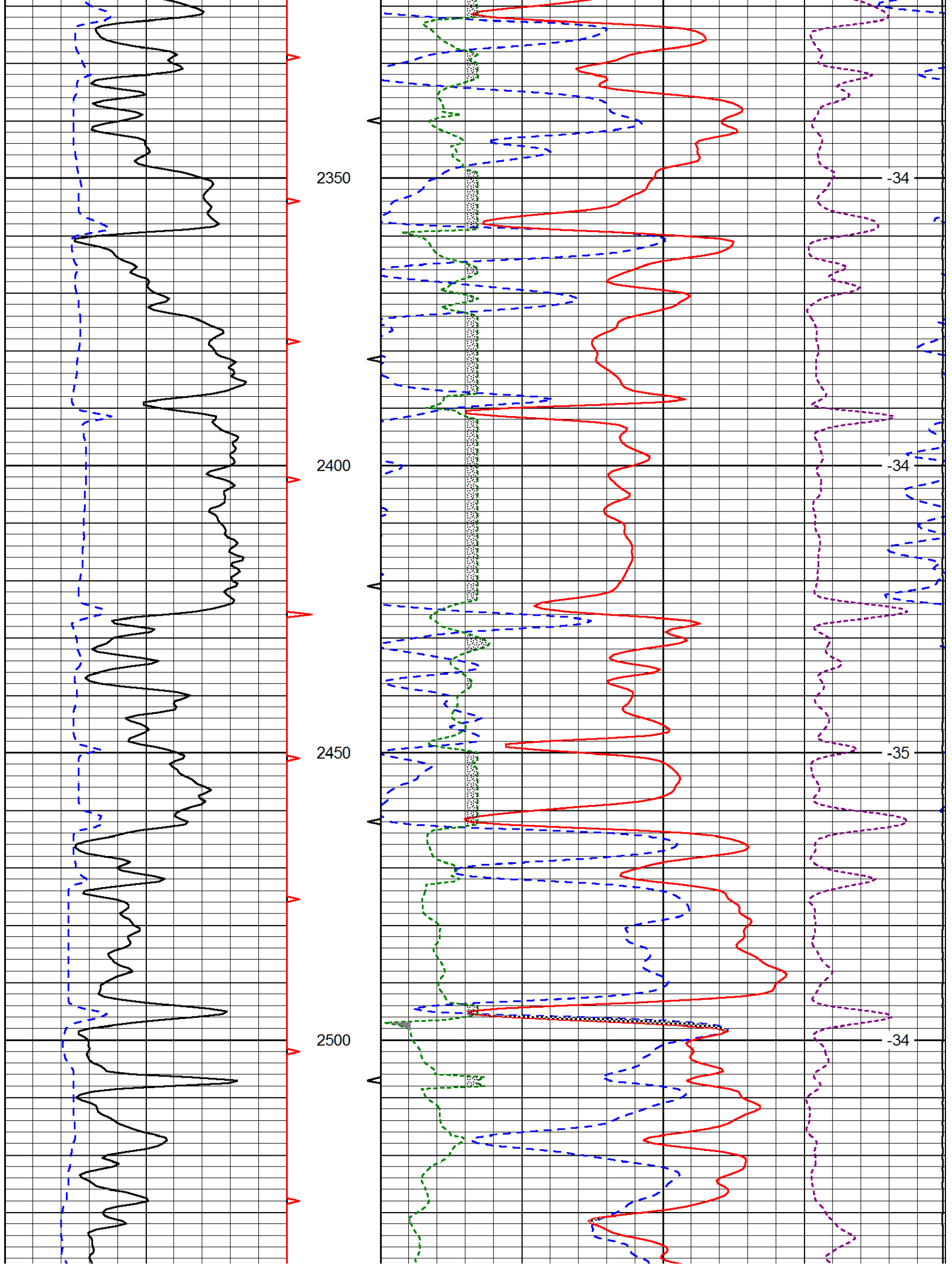




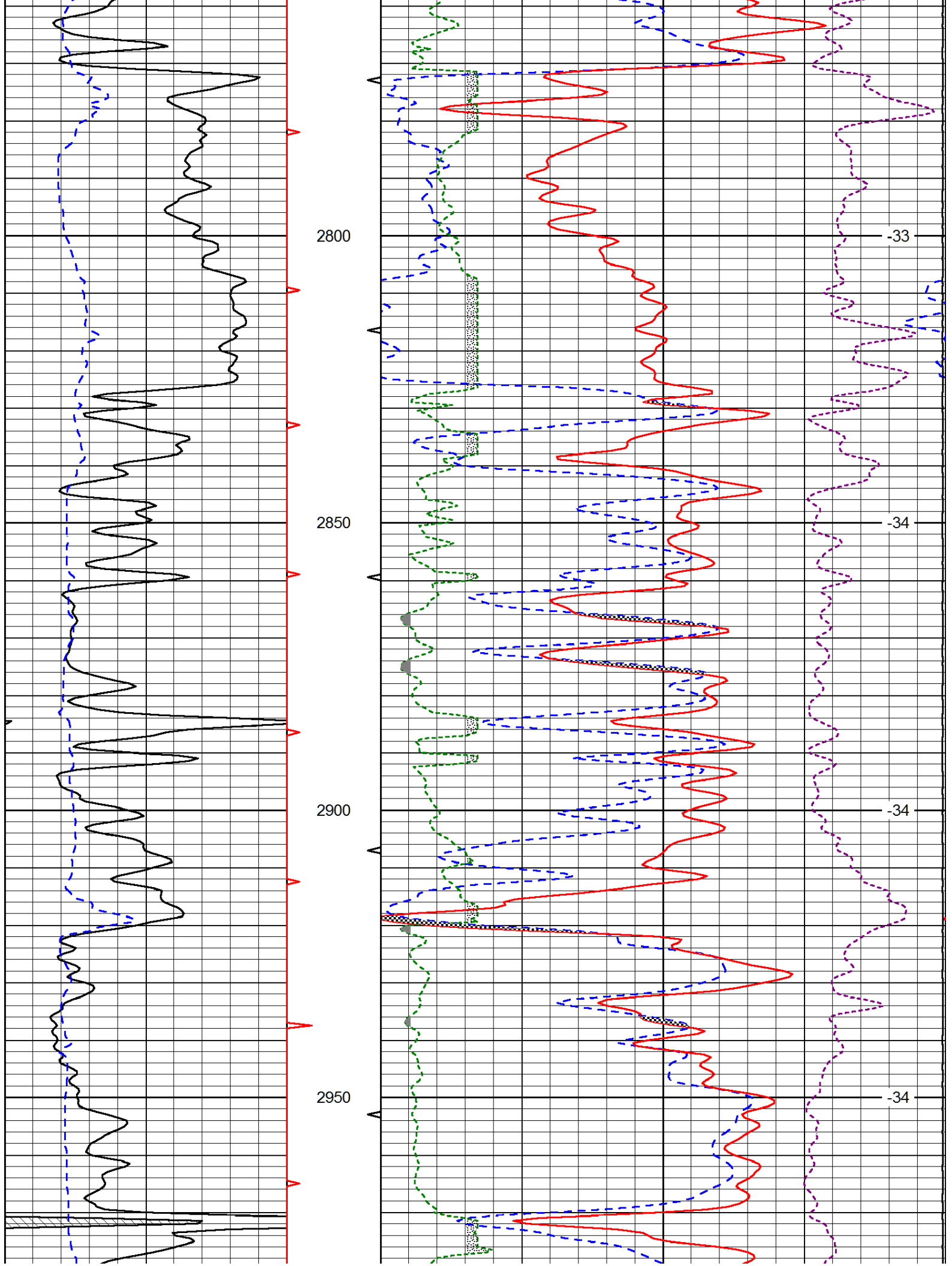


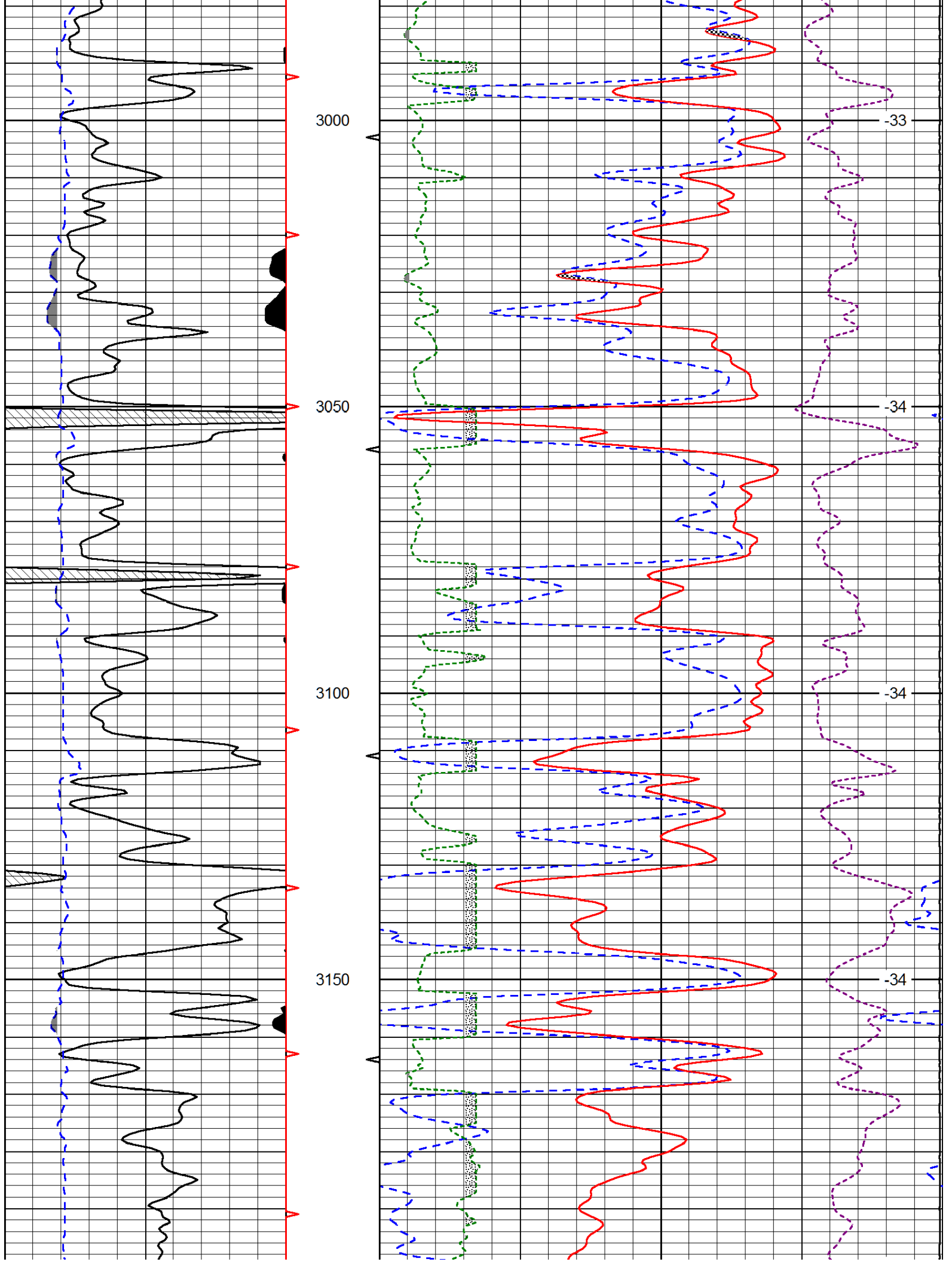
Database File: buffalo\_resources\_matthew\_1\_8hd.db  
 Dataset Pathname: dil/bufstk  
 Presentation Format: cndlspec  
 Dataset Creation: Thu Jan 30 10:36:38 2014  
 Charted by: Depth in Feet scaled 1:240

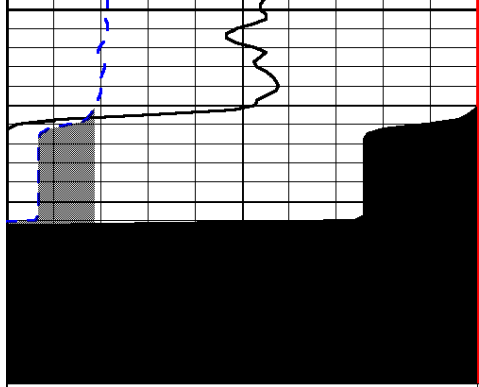






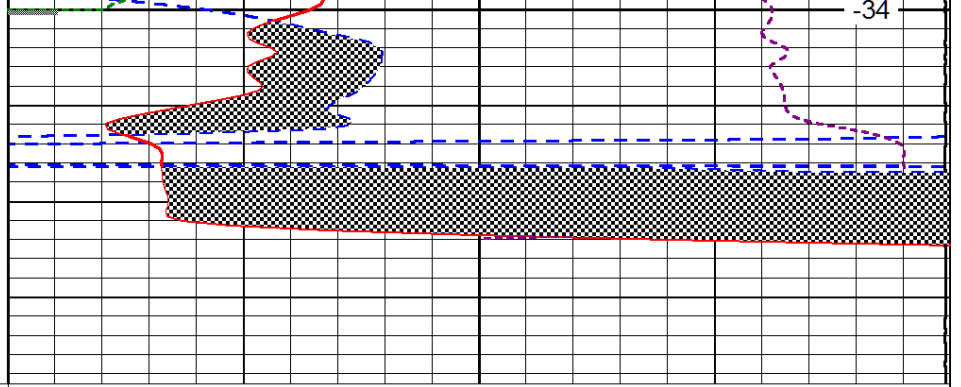






0	Gamma Ray (GAPI)	150
6	Caliper (in)	16

3200



30	CNPOR (pu)		-10
30	Compensated Density (2.71 ma) (pu)		-10
2.625	DGA (g/cc)	3.425	-0.25
			Correction (g/cc)
10000	Line Tension (lb)		0

LSPD  
(ft/min)