



Pioneer Energy Services

# Microresistivity Log

API No. 15-167-23,931-00-00

Company **Buffalo Resources**  
 Well **Matthew No. 1-8**  
 Field **Dorrance**  
 County **Russell** State **Kansas**

Location **NW-SE-SW-NW  
 2207' FNL & 850' FWL**

Sec: **8** Twp: **14S** Rge: **11W**

Other Services  
 CNL/CDL  
 DIL

Permanent Datum	Ground Level	Elevation 1723	K.B. 1731 D.F. 1723 G.L. 1723
Log Measured From	Kelly Bushing	8 Ft. Above Perm. Datum	
Drilling Measured From	Kelly Bushing		
Date	1/30/14		
Run Number	Two		
Depth Driller	3235		
Depth Logger	3234		
Bottom Logged Interval	3233		
Top Log Interval	2200		
Casing Driller	8.625 @ 459		
Casing Logger	458		
Bit Size	7.875		
Type Fluid in Hole	Chemical		
Salinity, ppm CL	9,300		
Density / Viscosity	9.1   48		
pH / Fluid Loss	10.0   8.8		
Source of Sample	Flowline		
Rm @ Meas. Temp	.28 @ 48		
Rmf @ Meas. Temp	.21 @ 48		
Rmc @ Meas. Temp	.38 @ 48		
Source of Rmf / Rmc	Charts		
Rm @ BHT	.12 @ 108		
Operating Rig Time	3 1/2 Hours		
Max Rec. Temp. F	108		
Equipment Number	10		
Location	Hays		
Recorded By	J. Henrickson		
Witnessed By	David Gould		

<<< Fold Here >>>

All interpretations are opinions based on inferences from electrical or other measurements and we cannot and do not guarantee the accuracy or correctness of any interpretation, and we shall not, except in the case of gross or willful negligence on our part, be liable or responsible for any loss, costs, damages, or expenses incurred or sustained by anyone resulting from any interpretation made by any of our officers, agents or employees. These interpretations are also subject to our general terms and conditions set out in our current Price Schedule.

Comments

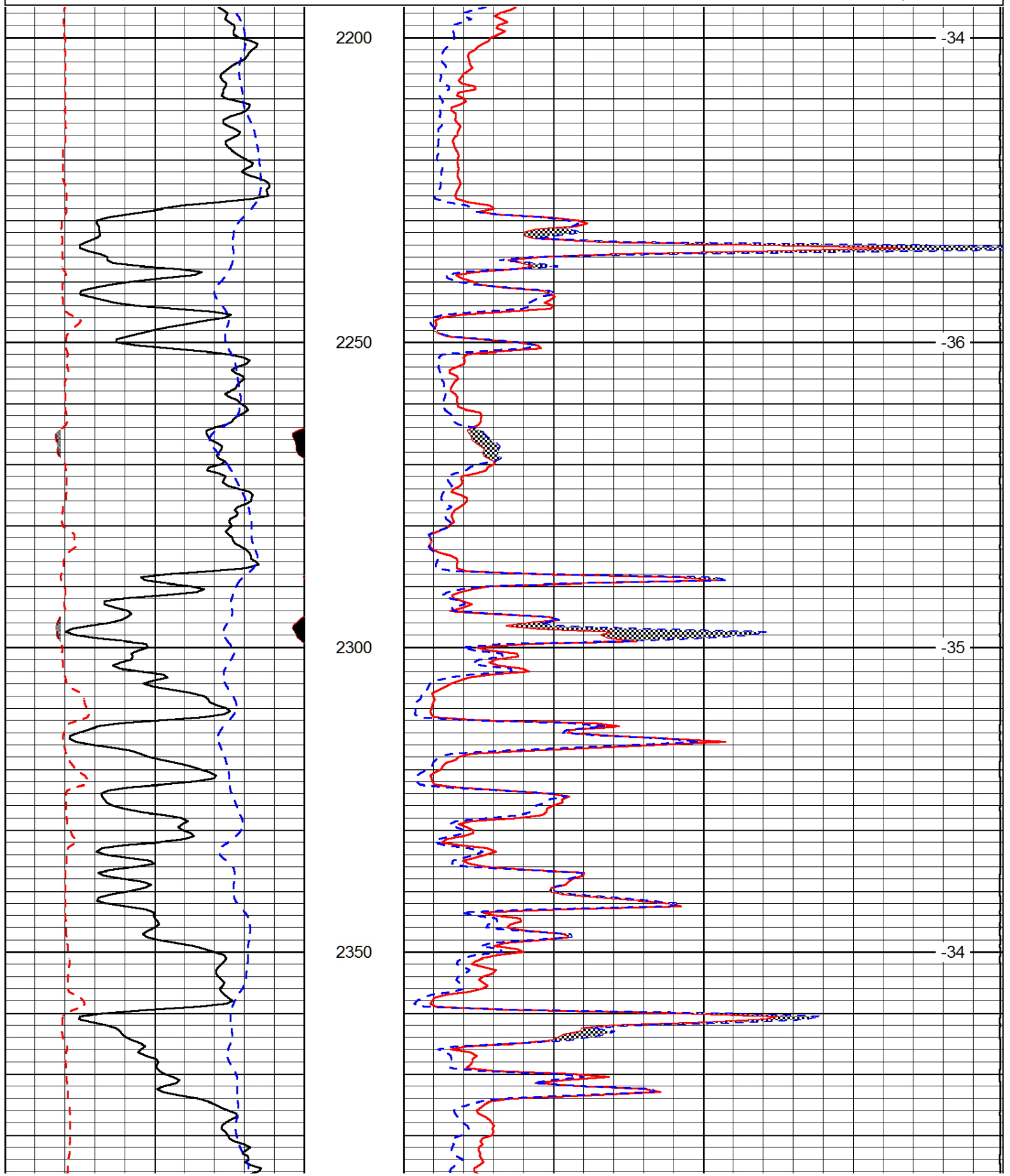
Thank you for using Log-Tech, Inc.  
 (785) 625-3858

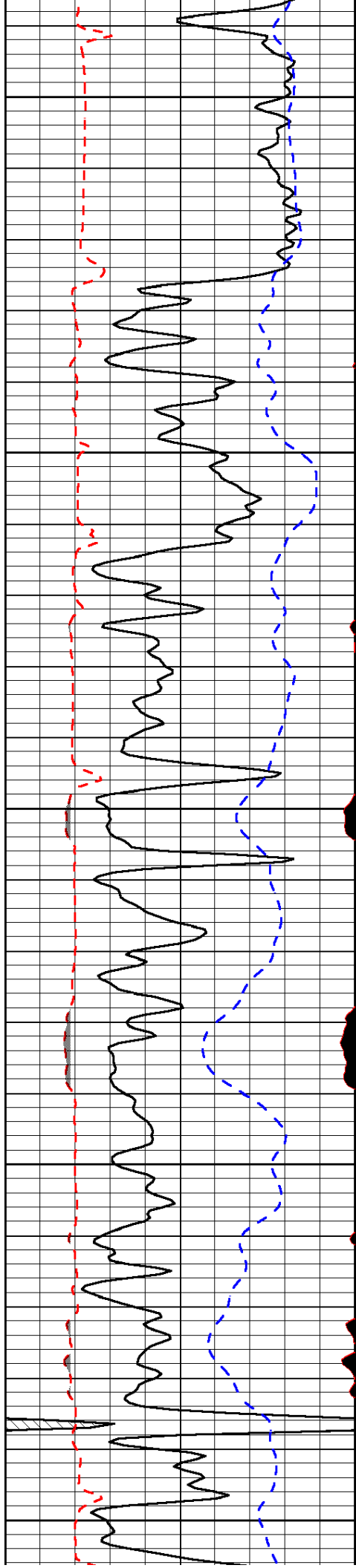
Dorrance Kansas  
 1/2 East on Grant Lane, North Into

0	Gamma Ray (GAPI)	150
6	MCAL (in)	16
2.875	Mud Cake (in)	7.875
-200	SP (mV)	0

0	Micro Inverse 1 X 1 (Ohm-m)	40
0	Micro Normal 2" (Ohm-m)	40
10000	Line Weight (lb)	0

LSPD  
(ft/min)





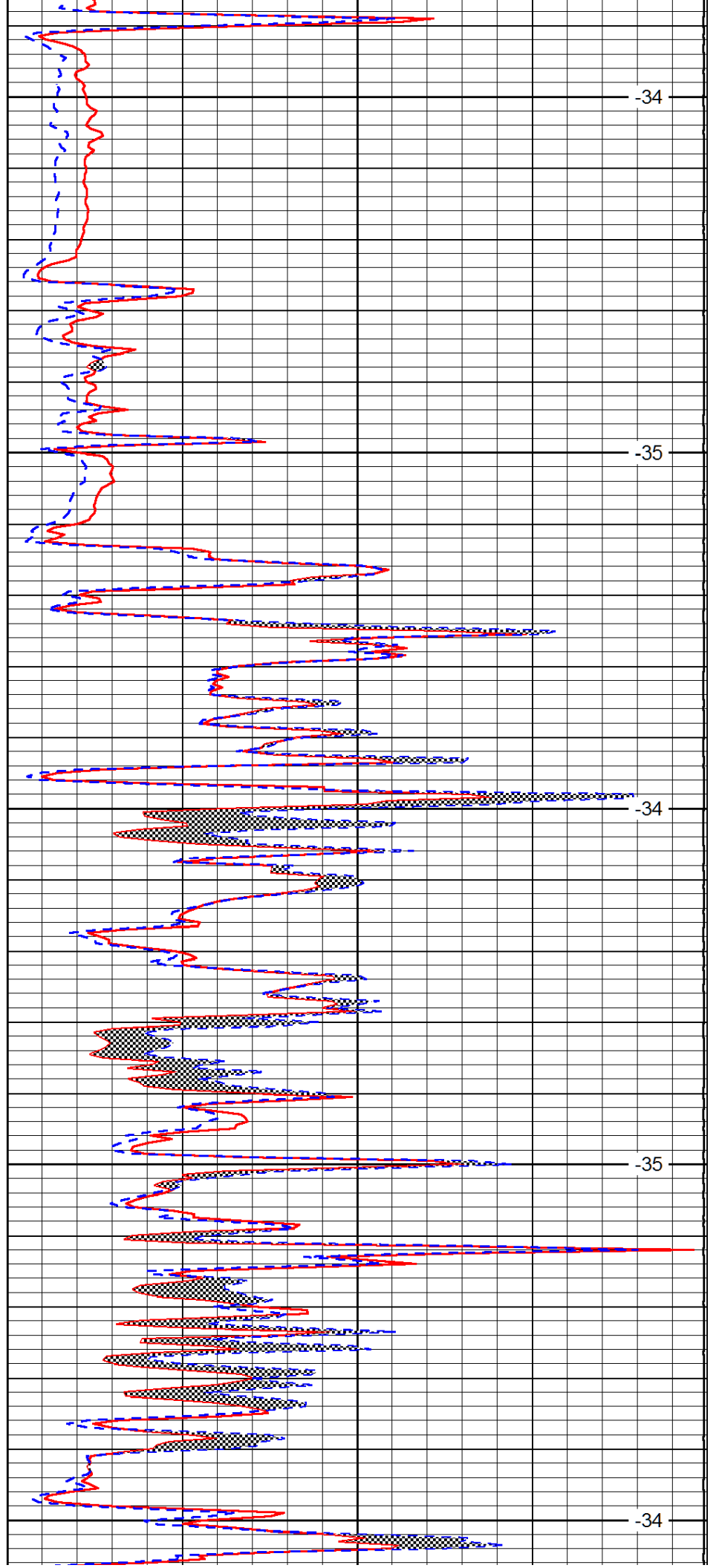
2400

2450

2500

2550

2600



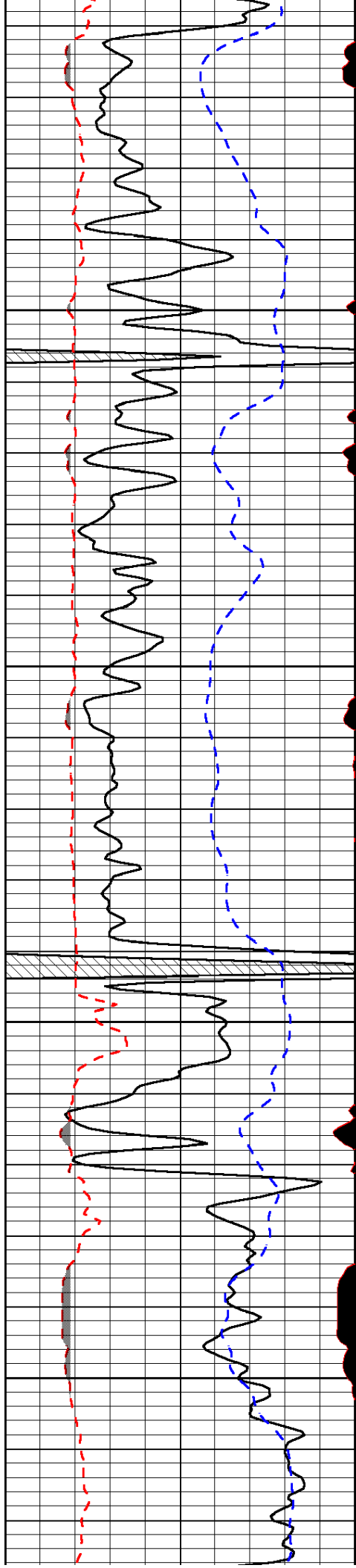
-34

-35

-34

-35

-34

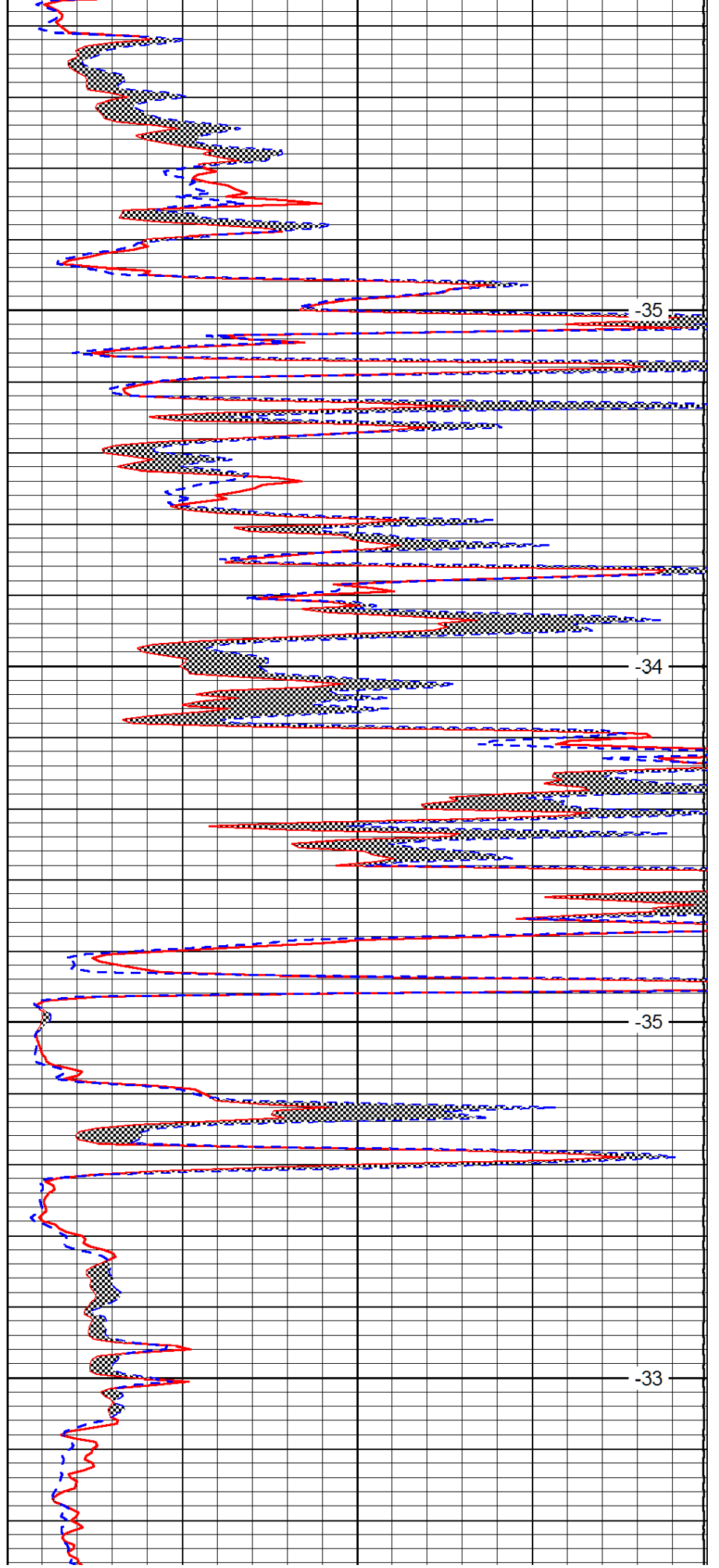


2650

2700

2750

2800

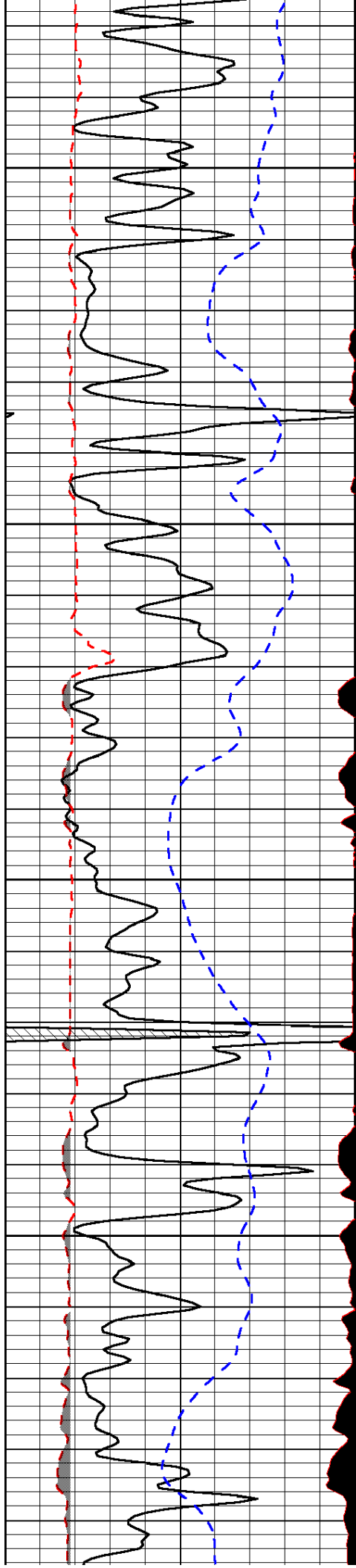


-35

-34

-35

-33

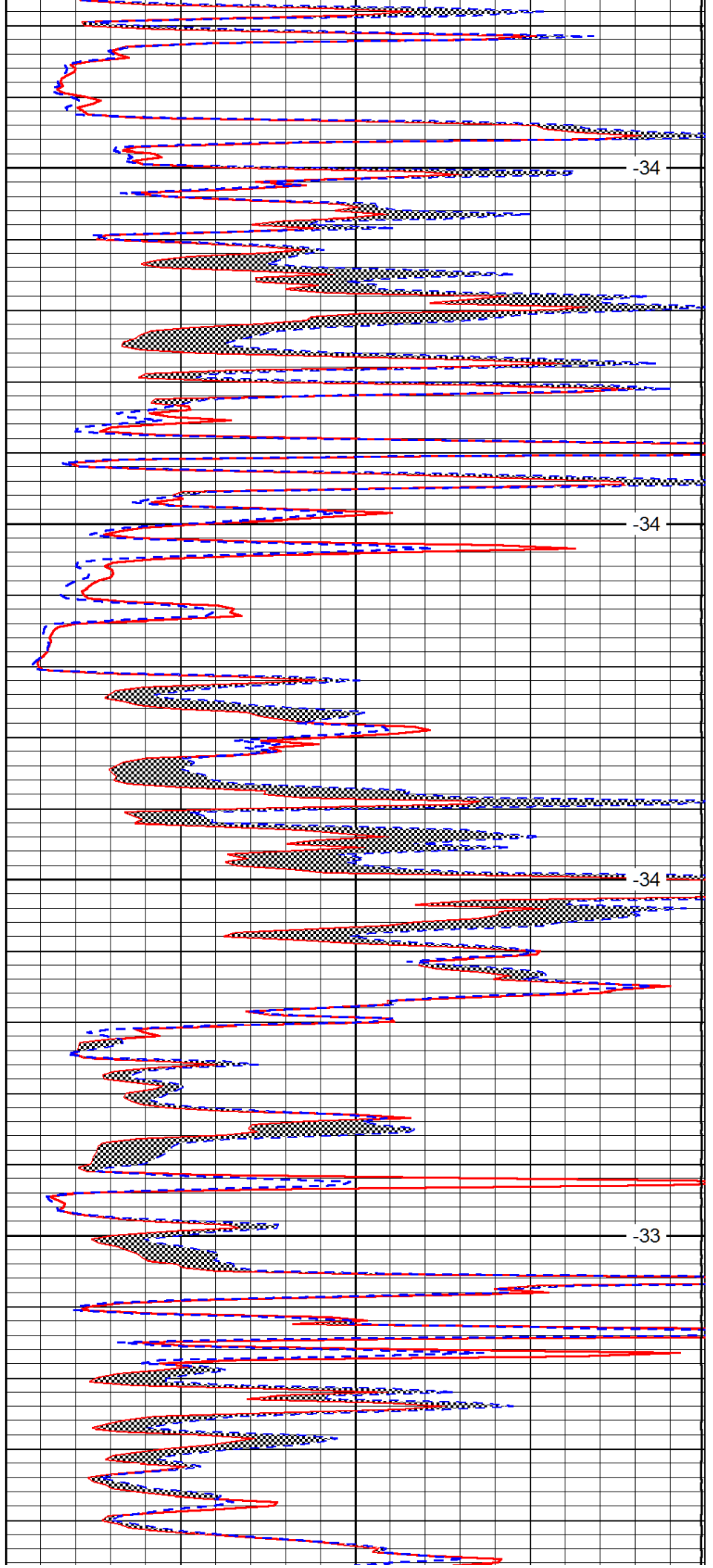


2850

2900

2950

3000

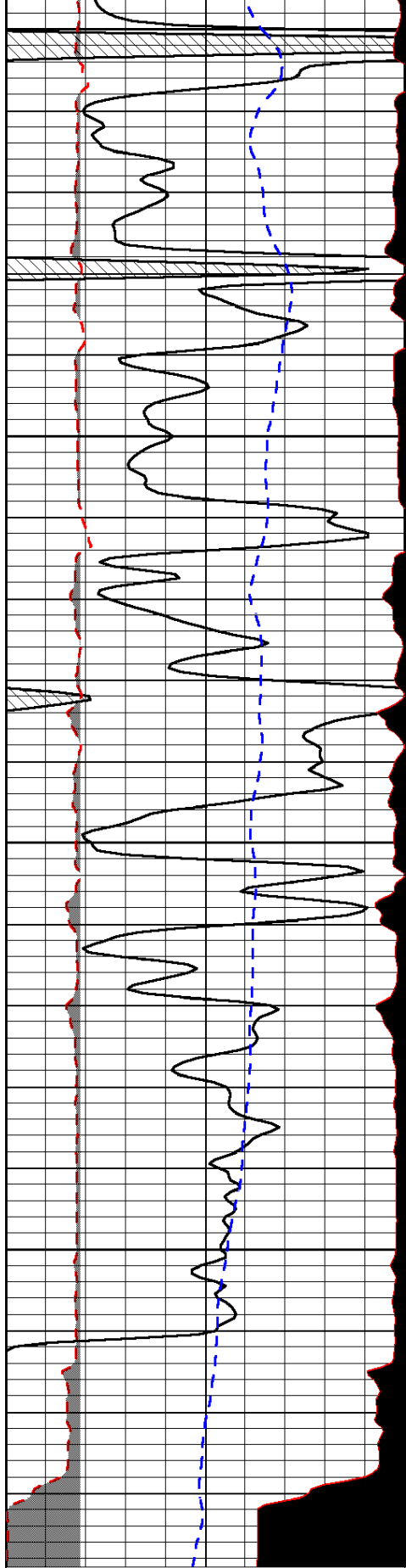


-34

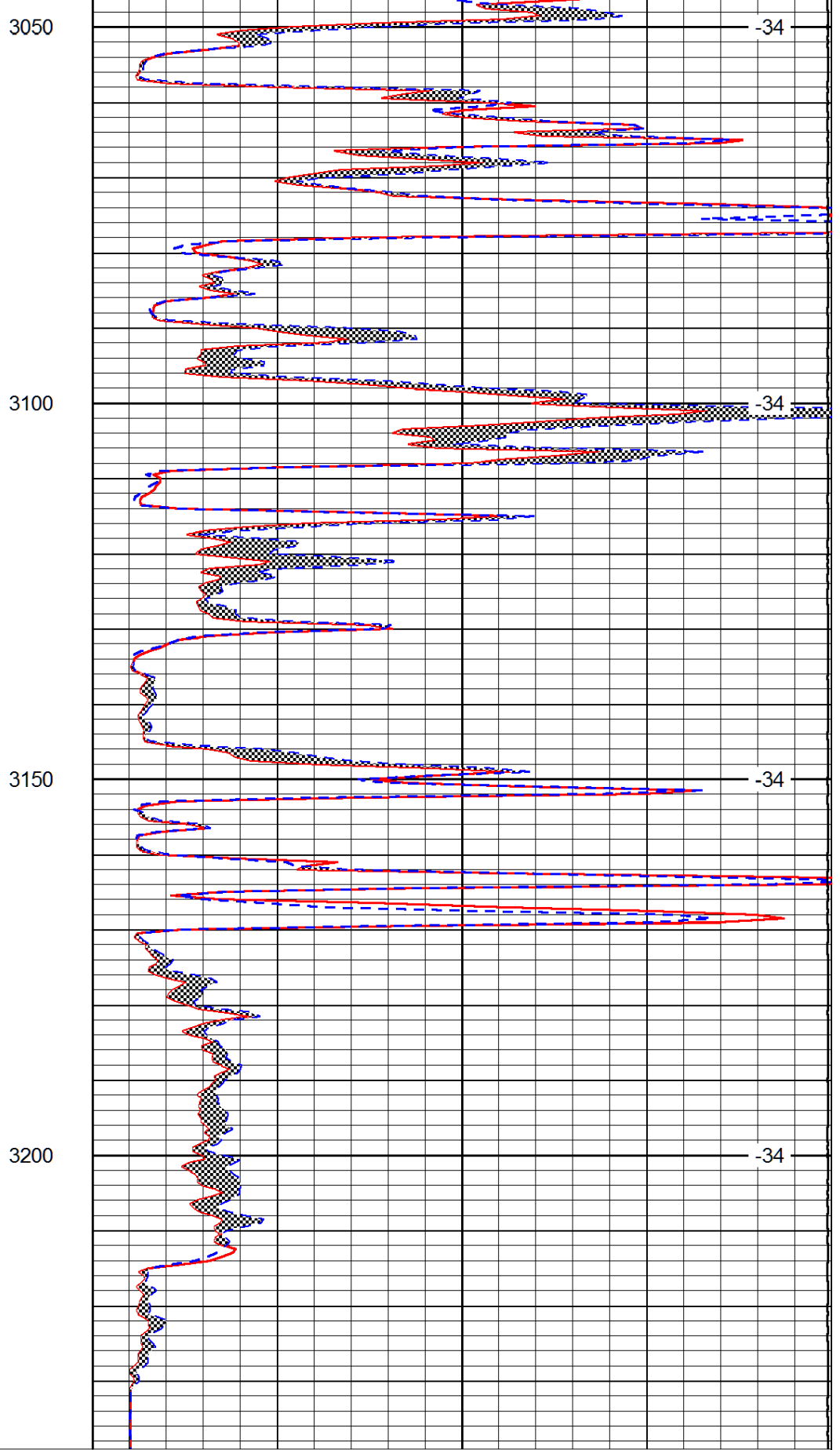
-34

-34

-33



0	Gamma Ray (GAPI)	150
6	MCAL (in)	16
2.875	Mud Cake (in)	7.875
-200	SP (mV)	0



0	Micro Inverse 1 X 1 (Ohm-m)	40
0	Micro Normal 2" (Ohm-m)	40
10000	Line Weight (lb)	0

LSPD  
(ft/min)