



DUAL INDUCTION
LL3/GR LOG

Company **CHEROKEE WELLS, LLC.**
 Well **BRAMAN # 1-1**
 Field **BUFFALO**
 County **WILSON** State **KANSAS**

Location: **API # : 15-205-28244-0000**
E/2 NE NE NE
330' FNL & 165' FEL
SEC 1 TWP 27S RGE 15E

Permanent Datum **GL** Elevation **883' est**
 Log Measured From **GL**
 Drilling Measured From **GL**

Other Services **CDL/SWN**
 Elevation **K.B. ---**
D.F. ---
G.L. 883' est

Date	12-10-2013
Run Number	ONE
Depth Driller	1275'
Depth Logger	1275'
Bottom Logged Interval	1273'
Top Log Interval	SURFACE
Casing Driller	8 5/8" @ 43'
Casing Logger	8 5/8" @ 43'
Bit Size	6 3/4"
Type Fluid in Hole	WATER
Density / Viscosity	
pH / Fluid Loss	
Source of Sample	
Rm @ Meas. Temp	
Rmf @ Meas. Temp	
Rmc @ Meas. Temp	
Source of Rmf / Rmc	
Rm @ BHT	
Time Circulation Stopped	
Time Logger on Bottom	
Maximum Recorded Temperature	
Equipment Number	OW2
Location	HOMINY, OK
Recorded By	LOWERY
Witnessed By	MR. MORRIS

<<< Fold Here >>>

All interpretations are opinions based on inferences from electrical or other measurements and we cannot and do not guarantee the accuracy or correctness of any interpretation, and we shall not, except in the case of gross or willful negligence on our part, be liable or responsible for any loss, costs, damages, or expenses incurred or sustained by anyone resulting from any interpretation made by any of our officers, agents or employees. These interpretations are also subject to our general terms and conditions set out in our current Price Schedule.

Comments

OW2-8511
CREW : SHAMBLES



2" DIL SECTION

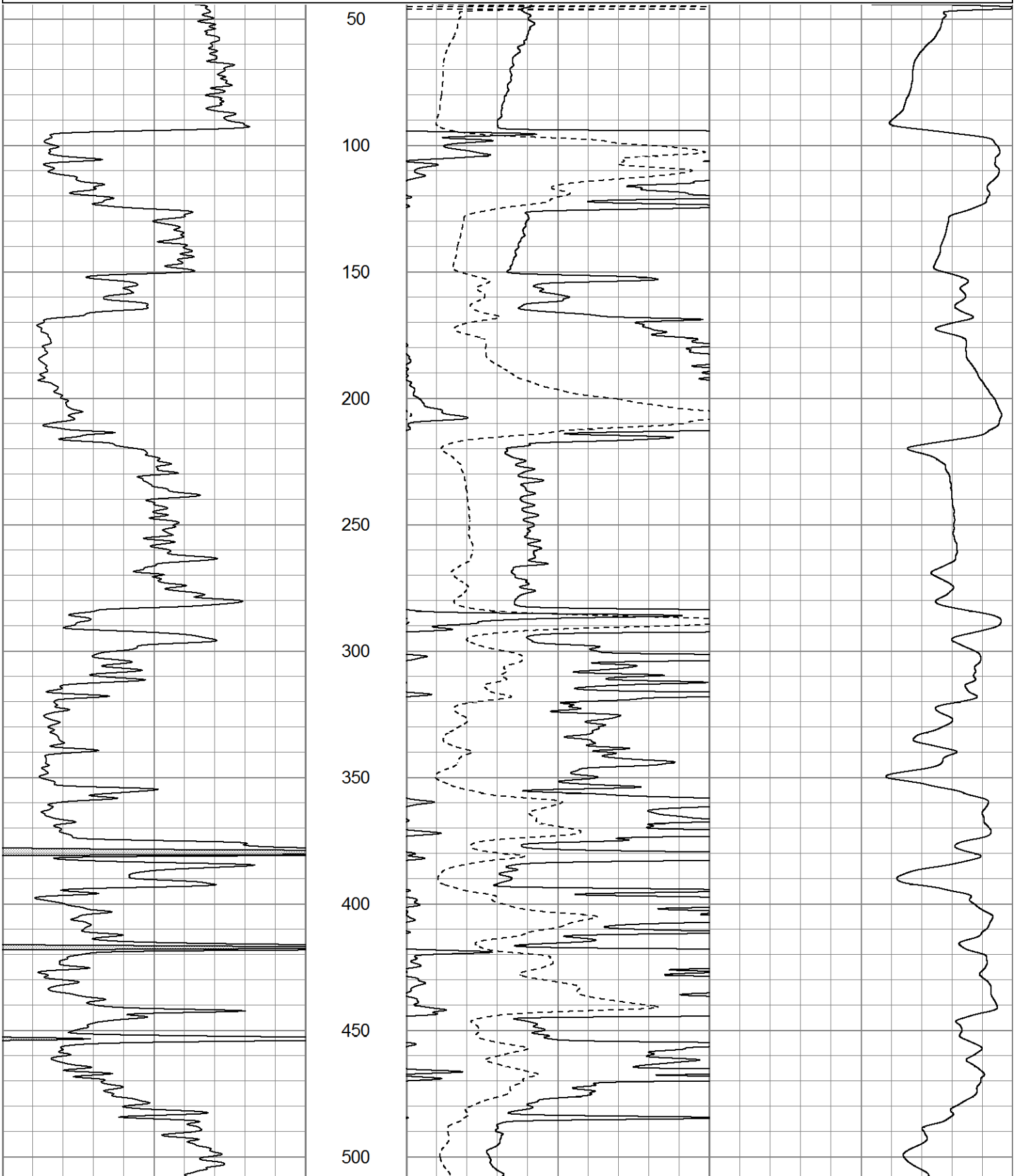
Database File ow2-8511 cherokee wells.db
 Dataset Pathname DIL/pass1.2
 Presentation Format dil2nomed
 Dataset Creation Tue Dec 10 13:51:50 2013
 Charted by Depth in Feet scaled 1:600

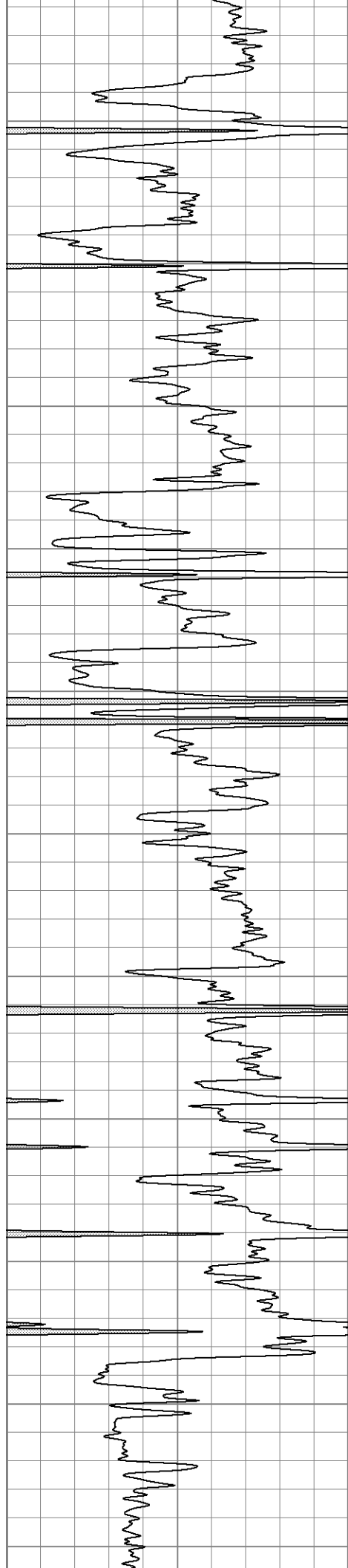
0 GR (GAPI) 150

0 RLL3 (Ohm-m) 50

0 RILD (Ohm-m) 50

1000 CILD (mmho/m) 0





550

600

650

700

750

800

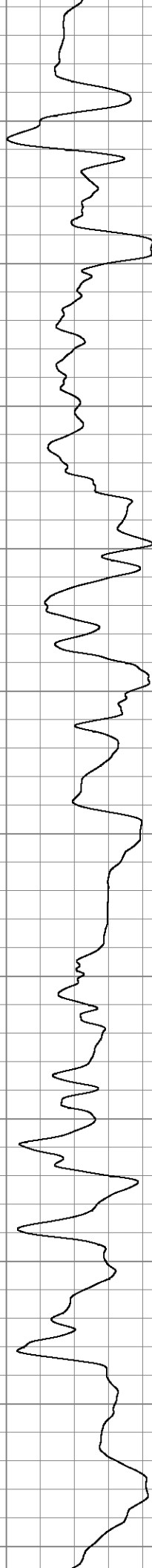
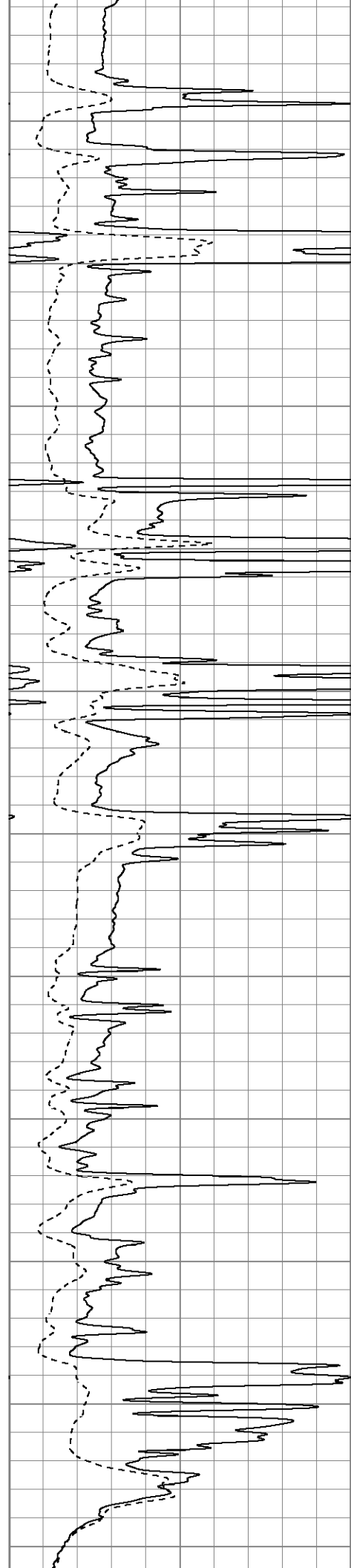
850

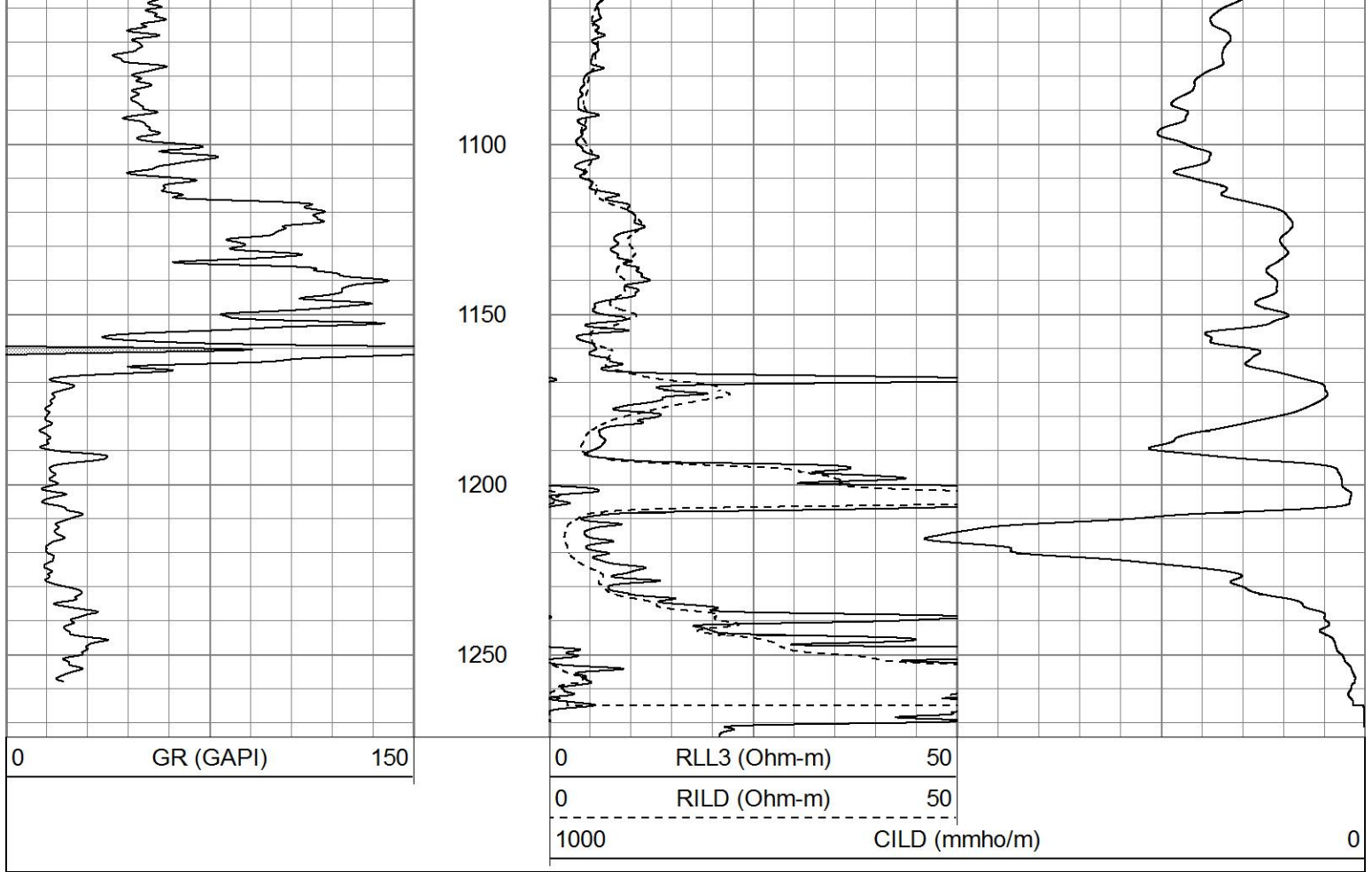
900

950

1000

1050

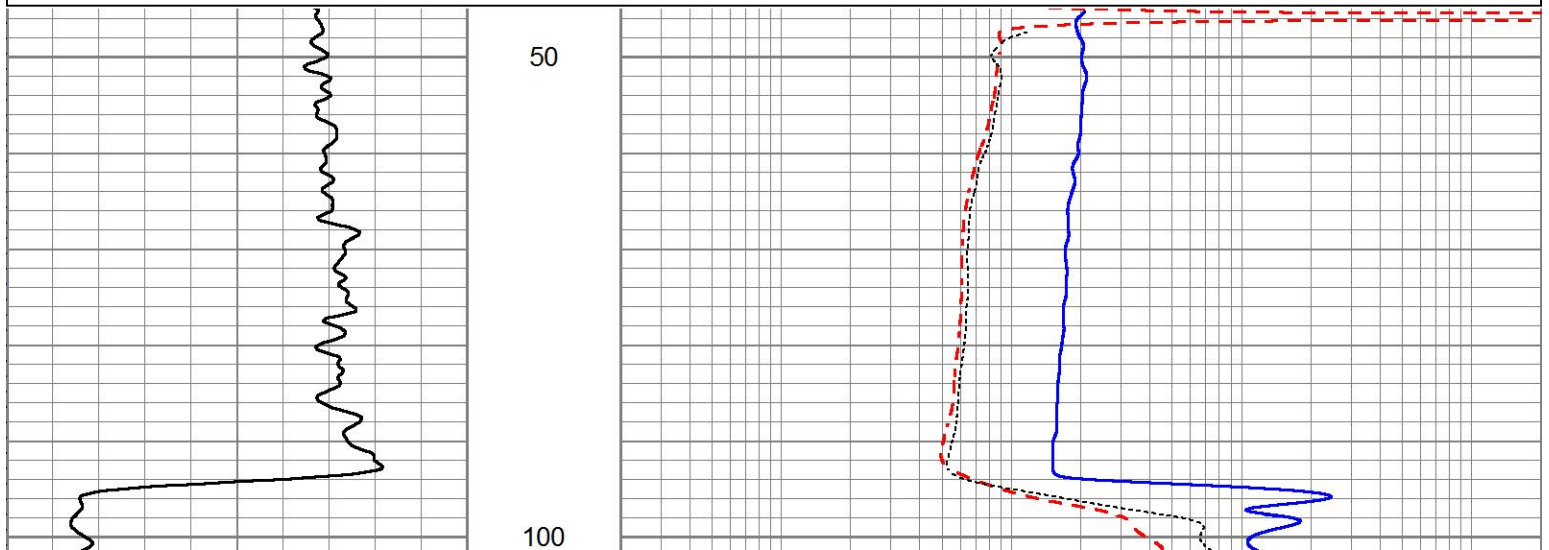


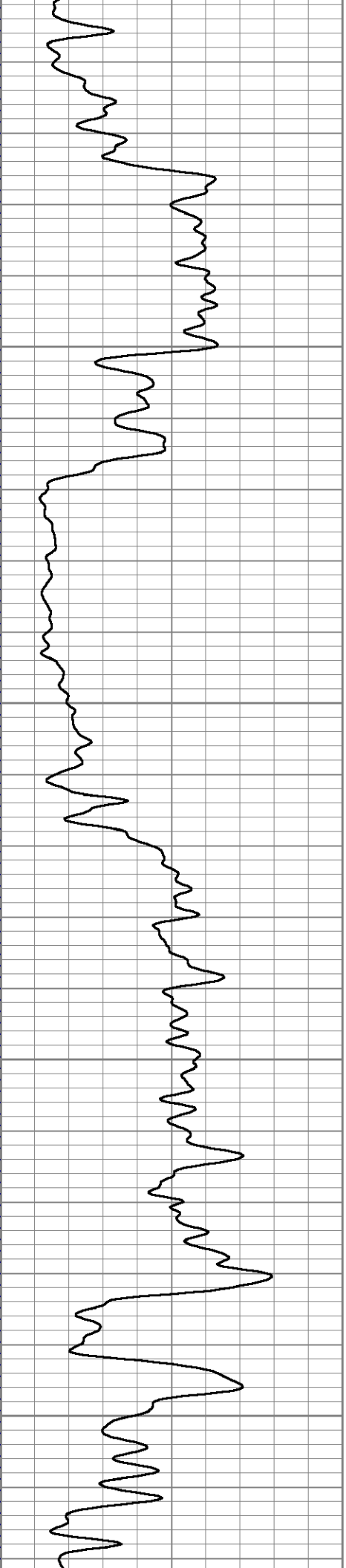


5" DIL SECTION

Database File ow2-8511 cherokee wells.db
 Dataset Pathname DIL/pass1.1
 Presentation Format dil5air
 Dataset Creation Tue Dec 10 13:51:45 2013
 Charted by Depth in Feet scaled 1:240

0	GR (GAPI)	150	0.2	RILD (Ohm-m)	2000
			0.2	RLL3 (Ohm-m)	2000
			0.2	RILM (Ohm-m)	2000



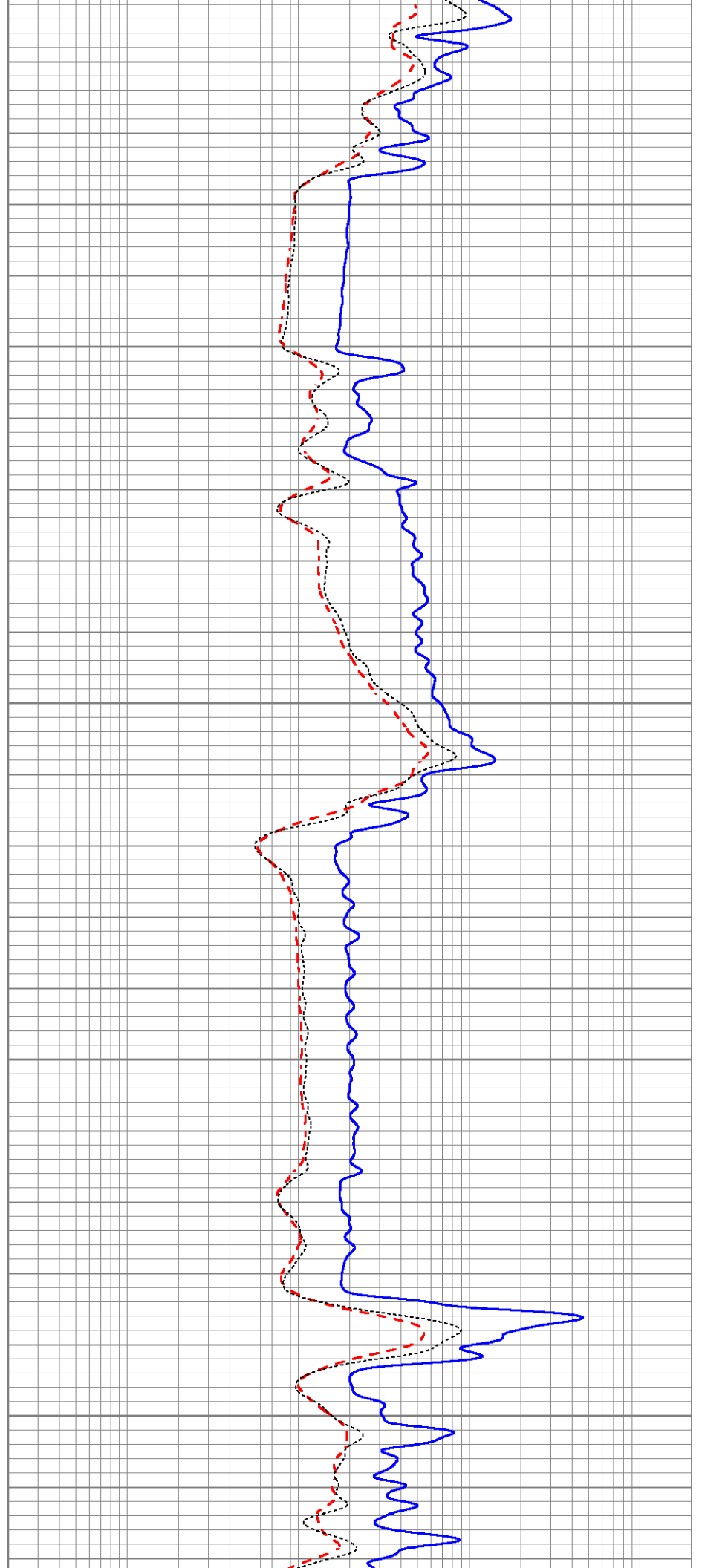


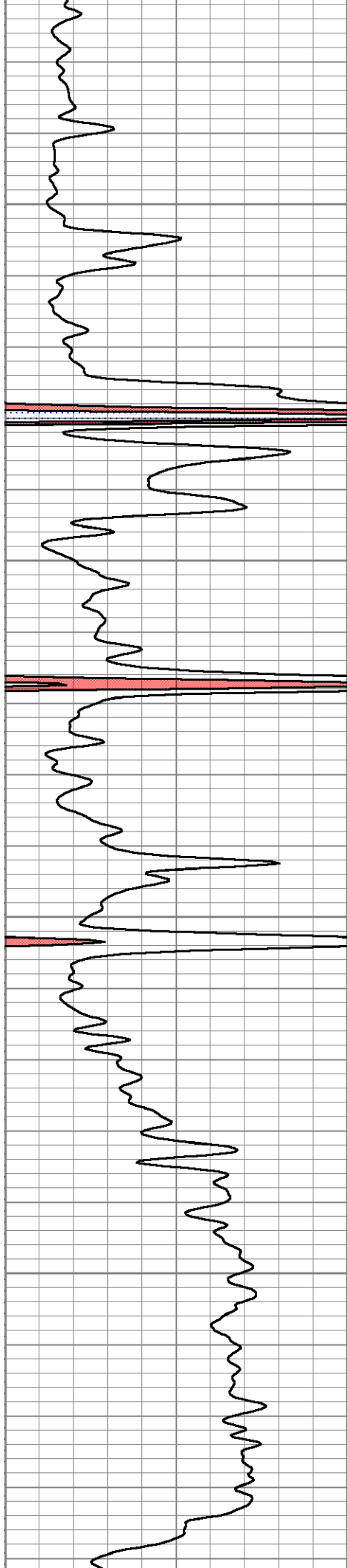
150

200

250

300



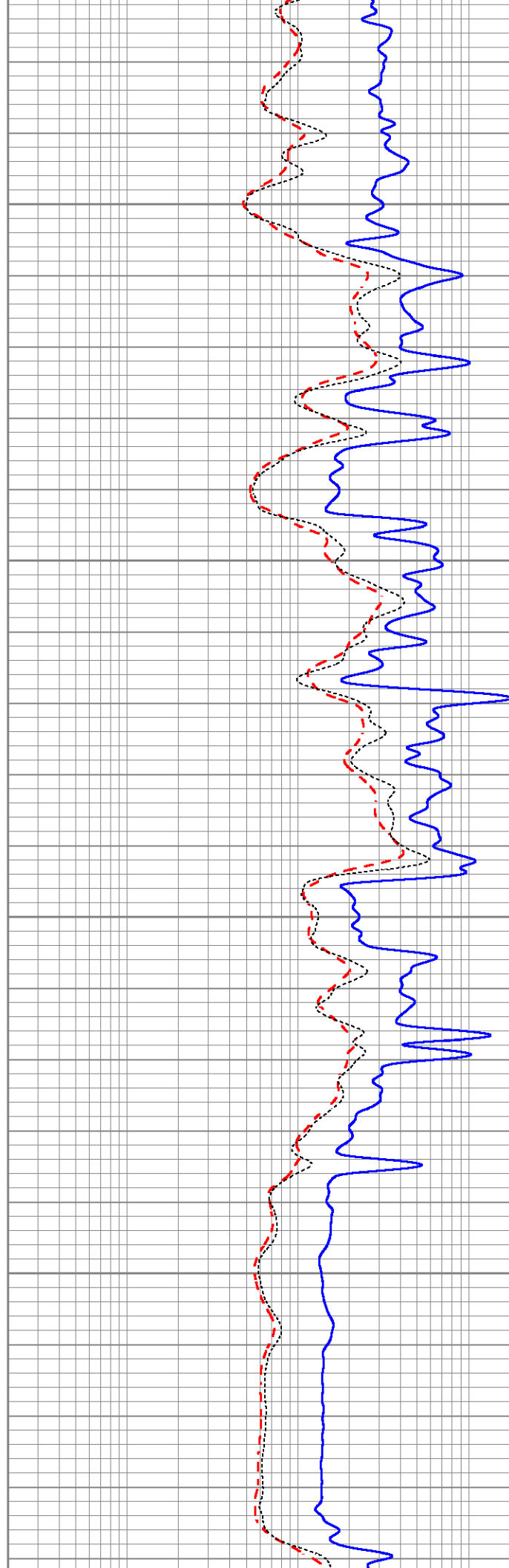


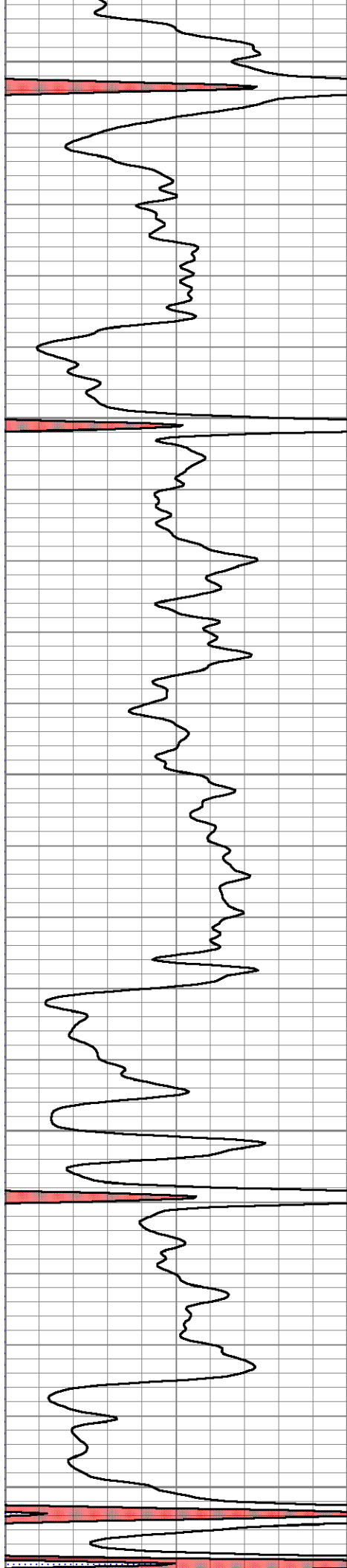
350

400

450

500





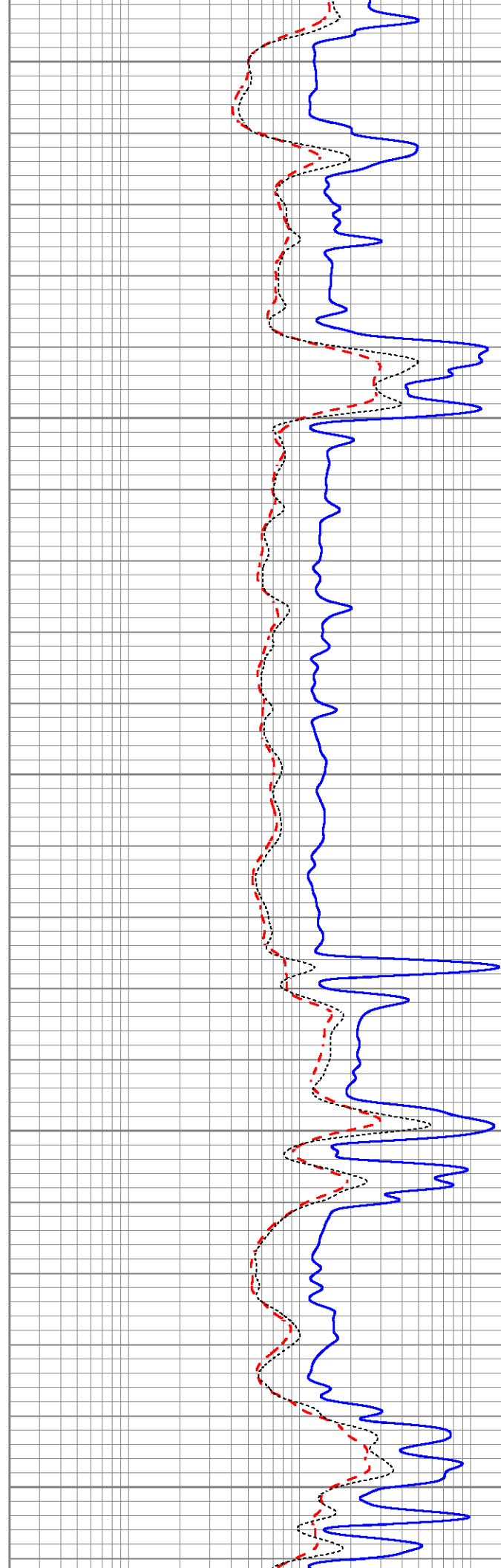
550

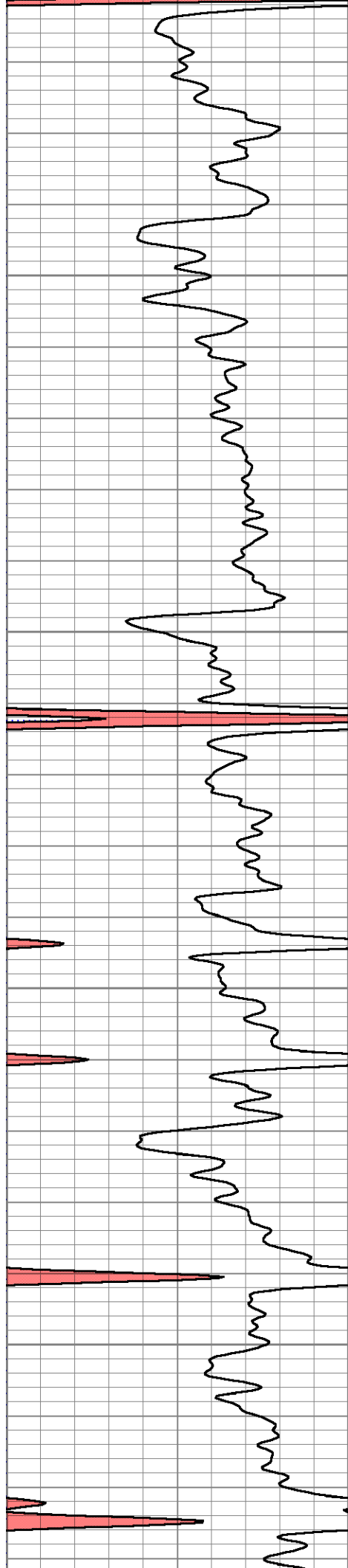
600

650

700

750



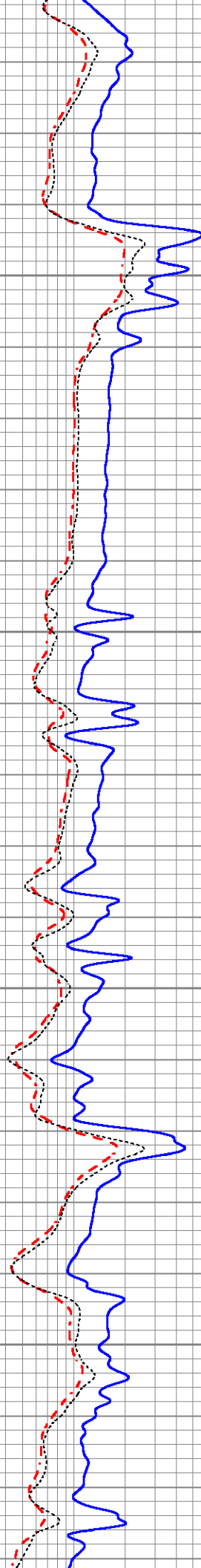


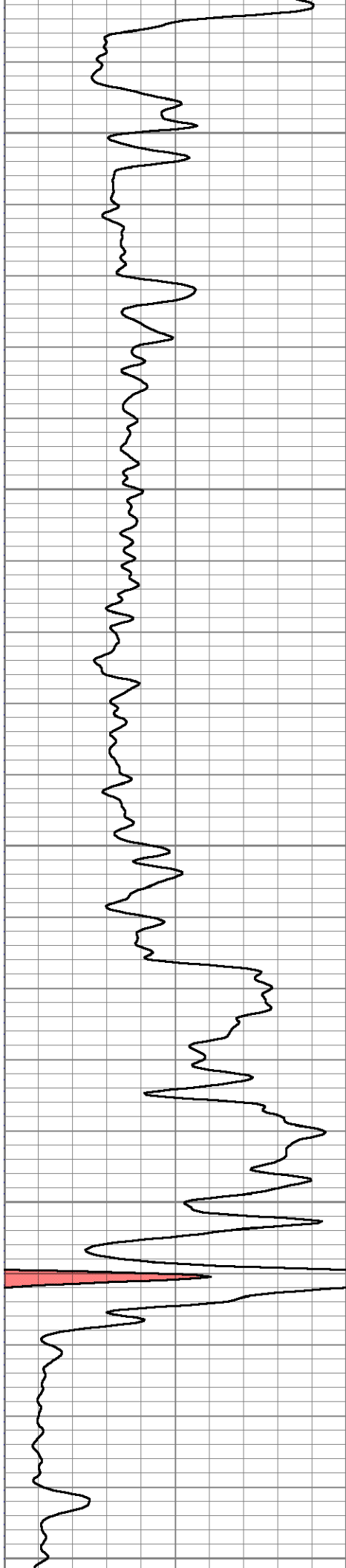
800

850

900

950





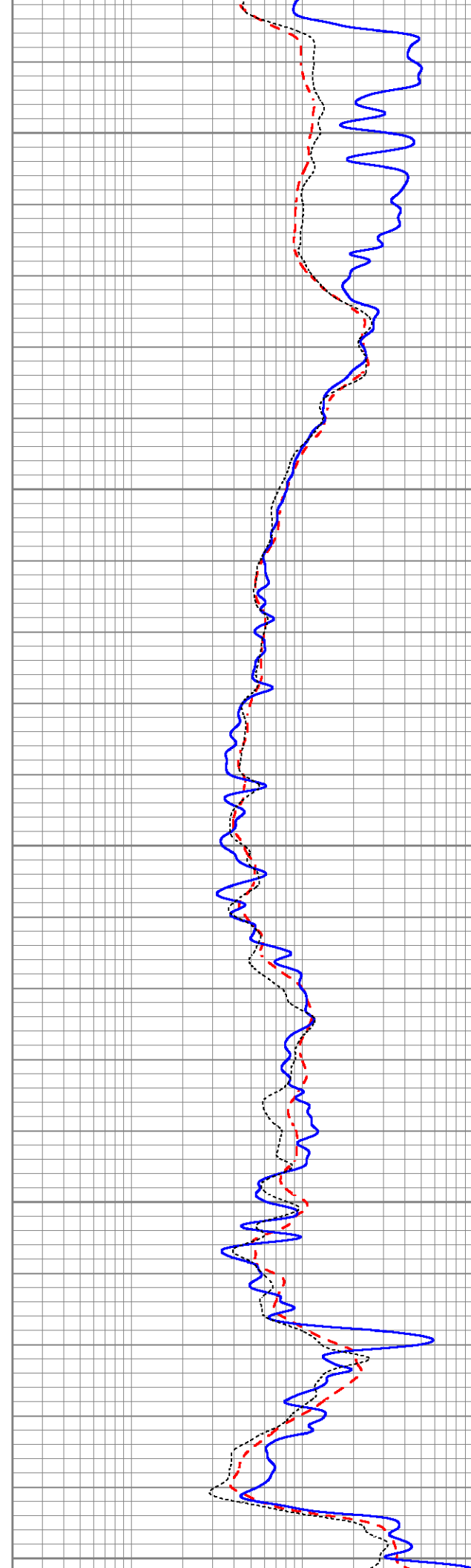
1000

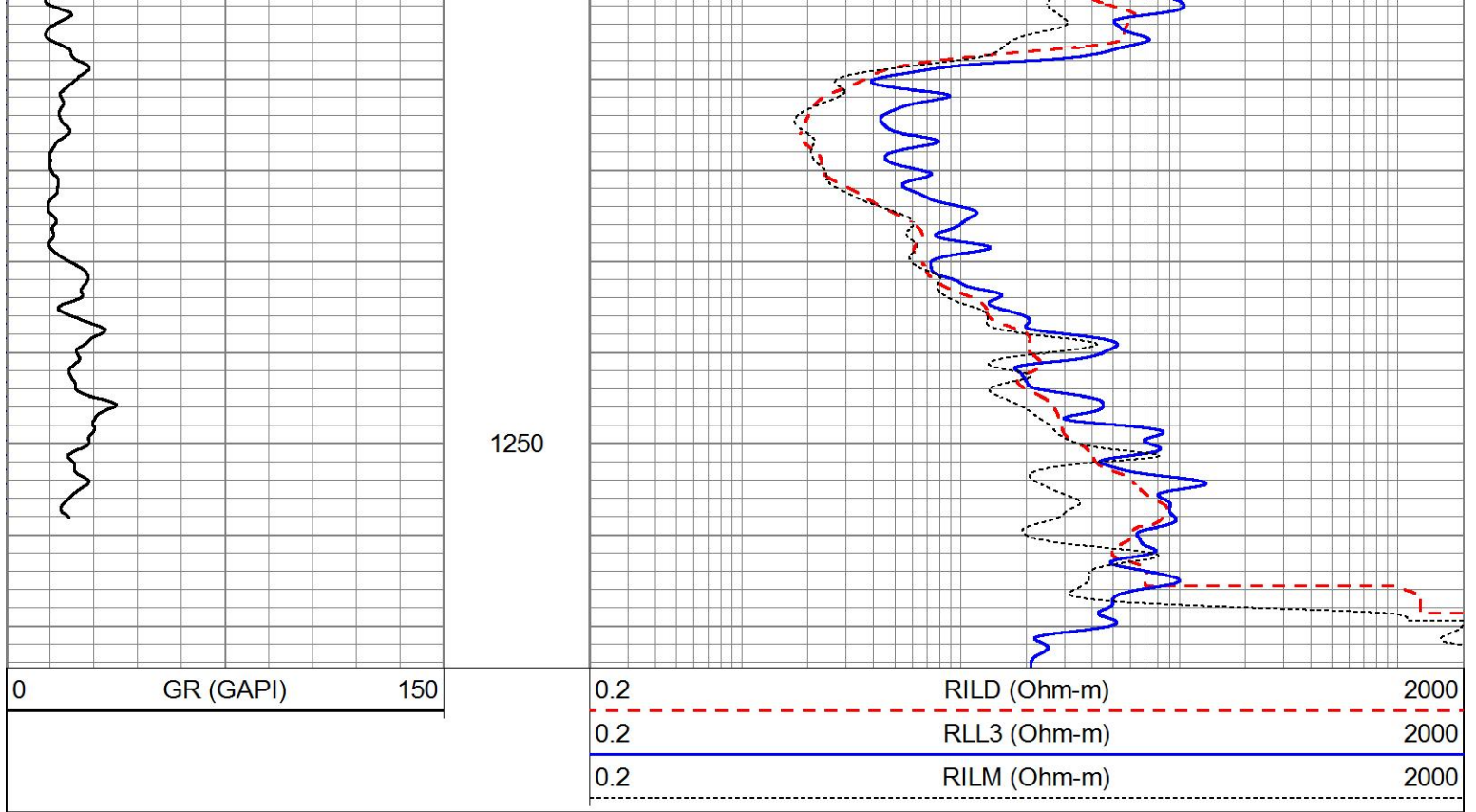
1050

1100

1150

1200





Sensor	Offset (ft)	Schematic	Description	Length (ft)	O.D. (in)	Weight (lb)
			Cable-CableHead Isulation Sub	1.42	3.00	20.00
SP CILD	10.92 10.92		DIL-GEAR (158) Dual Induction Electrical Log	21.36	4.00	345.00
CILM	7.00					
RLL3	1.67					

Dataset:	ow2-8511 cherokee wells.db: field/well/DIL/pass1
Total length:	22.78 ft
Total weight:	365.00 lb
O.D.:	4.00 in