



**COMPLETION
& PRODUCTION
SERVICES CO.**

**COMPENSATED
DENSITY / NEUTRON
PE LOG**

Company EAGLE CREEK CORPORATION
Well SIMONS FARMS #1-12
Field WILDCAT
County WICHITA
State KANSAS

Company EAGLE CREEK CORPORATION
Well SIMONS FARMS #1-12
Field WILDCAT
County WICHITA State KANSAS

Location: API # : 15-203-20236-0000
1977' FSL & 1328' FWL
SEC 12 TWP 17S RGE 35W
Permanent Datum GROUND LEVEL Elevation 3168
Log Measured From KELLY BUSHING 8' A.G.L.
Drilling Measured From KELLY BUSHING
Other Services
DIL/MEL
SONIC
Elevation
K.B. 3176
D.F. 3174
G.L. 3168

Date	10/27/13
Run Number	ONE
Depth Driller	4980
Depth Logger	4985
Bottom Logged Interval	4961
Top Log Interval	3600
Casing Driller	8 5/8"@265'
Casing Logger	265
Bit Size	7 7/8"
Type Fluid in Hole	CHEMICAL MUD
Density / Viscosity	9.0/58
pH / Fluid Loss	10.5/10.4
Source of Sample	FLOWLINE
Rim @ Meas. Temp	.500@80F
Rmf @ Meas. Temp	.375@80F
Rmc @ Meas. Temp	.600@80F
Source of Rmf / Rmc	MEASUREMENT
Rim @ BHT	.320@125F
Time Circulation Stopped	2.5 HOURS
Time Logger on Bottom	6:15 A.M.
Maximum Recorded Temperature	125F
Equipment Number	4854
Location	HAYS, KANSAS
Recorded By	JEFF LUEBBERS
Witnessed By	DAVE CALLEWAERT

<<< Fold Here >>>

All interpretations are opinions based on inferences from electrical or other measurements and we cannot and do not guarantee the accuracy or correctness of any interpretation, and we shall not, except in the case of gross or willful negligence on our part, be liable or responsible for any loss, costs, damages, or expenses incurred or sustained by anyone resulting from any interpretation made by any of our officers, agents or employees. These interpretations are also subject to our general terms and conditions set out in our current Price Schedule.

Comments

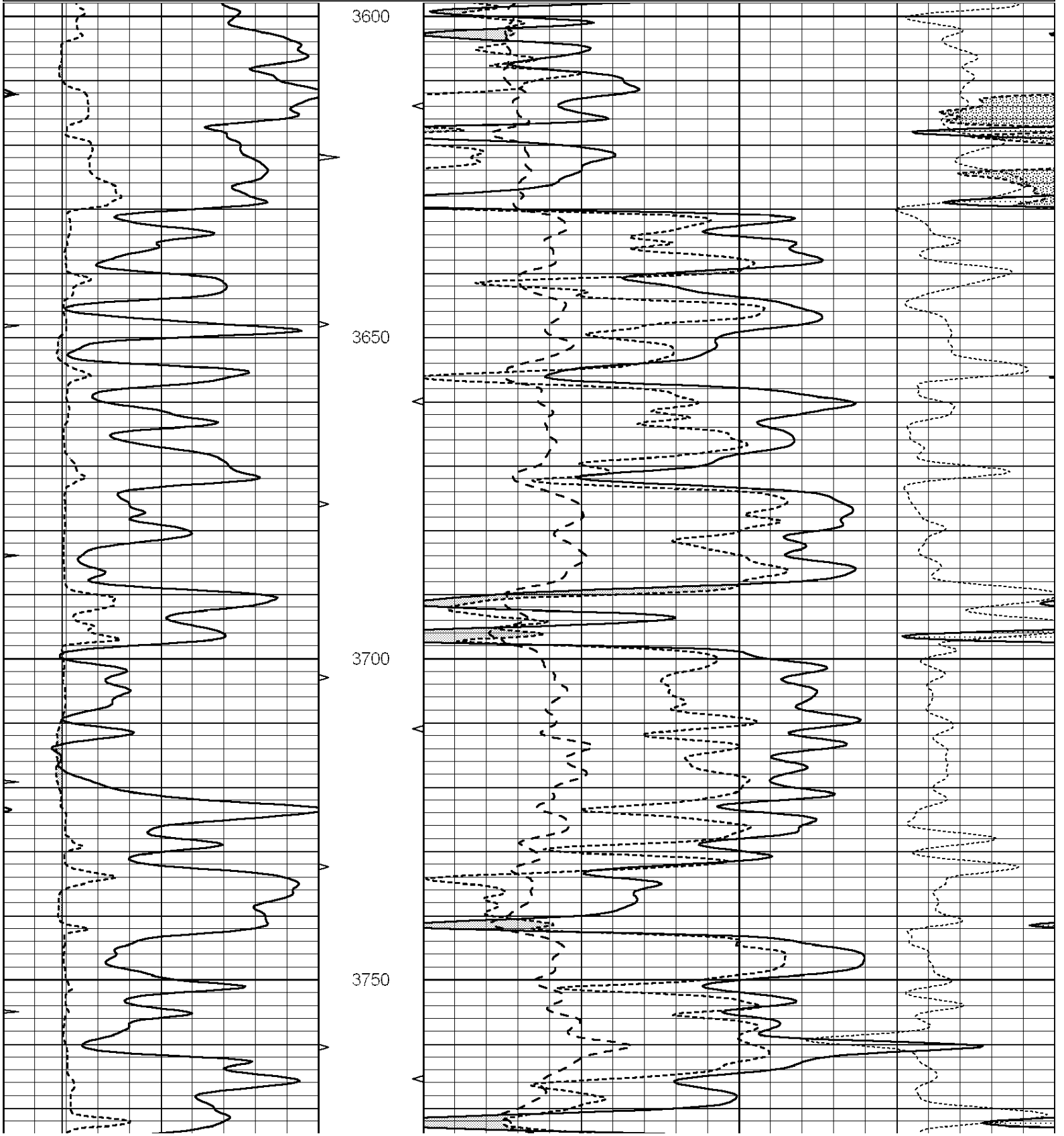
THANK YOU FOR USING "NABORS" HAYS, KANSAS (785) 628-6395
DIRECTIONS
SCOTT CITY, KS., 12W. ON HWY 96 TO (SCOTT/WICHITA COUNTY LINE), 6N., 1W., 1 1/2N., E. INTO

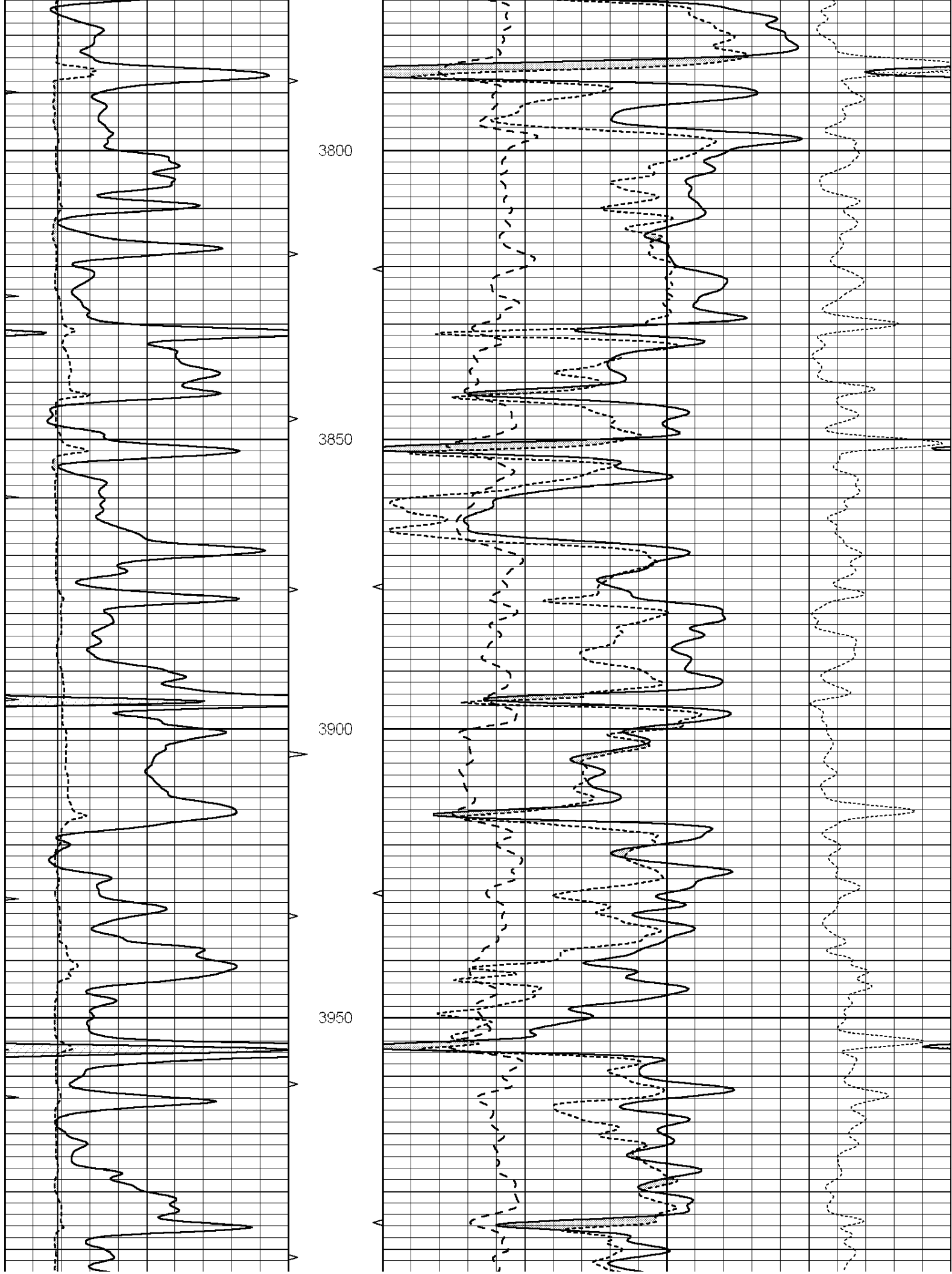


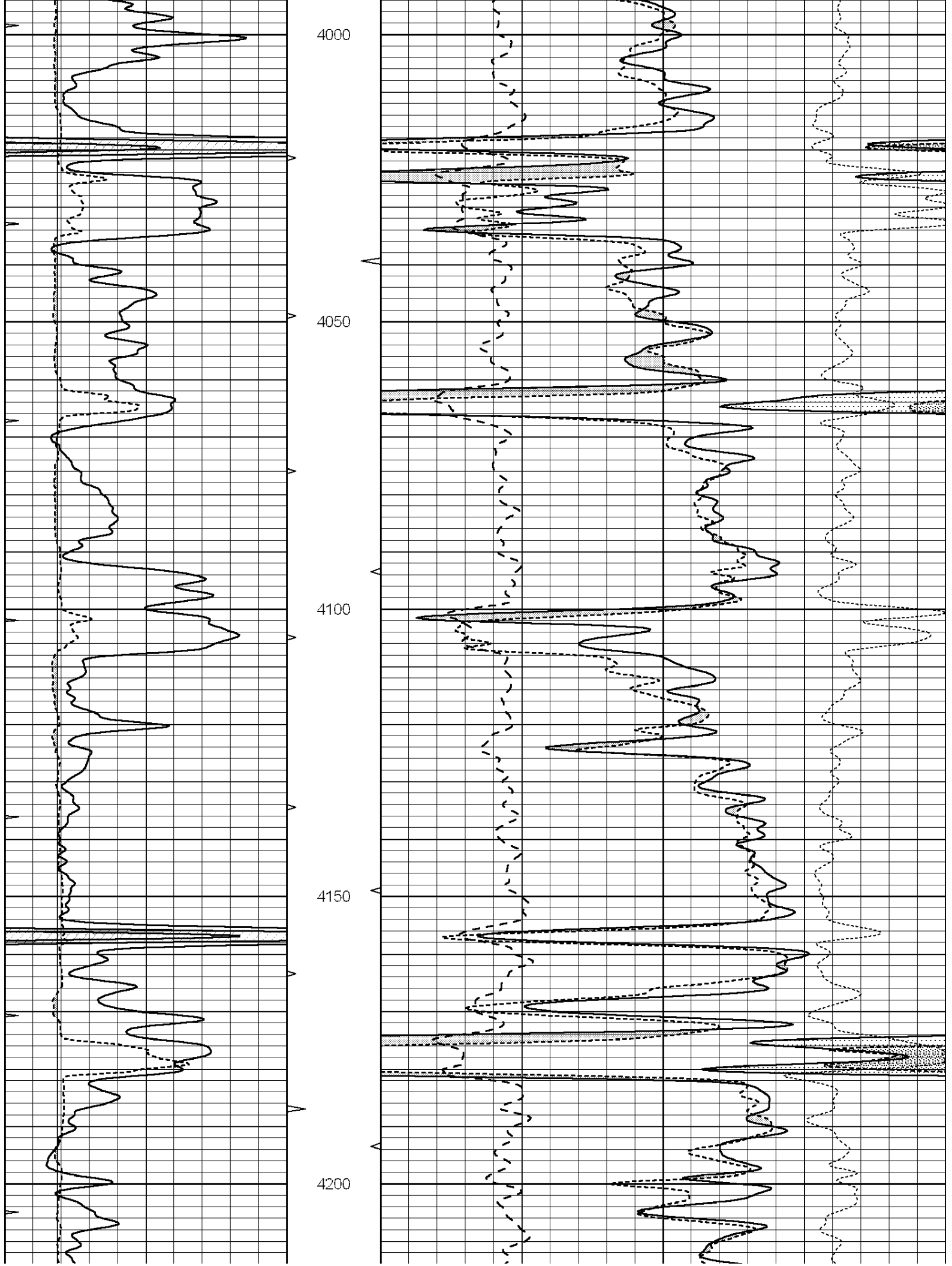
MAIN SECTION

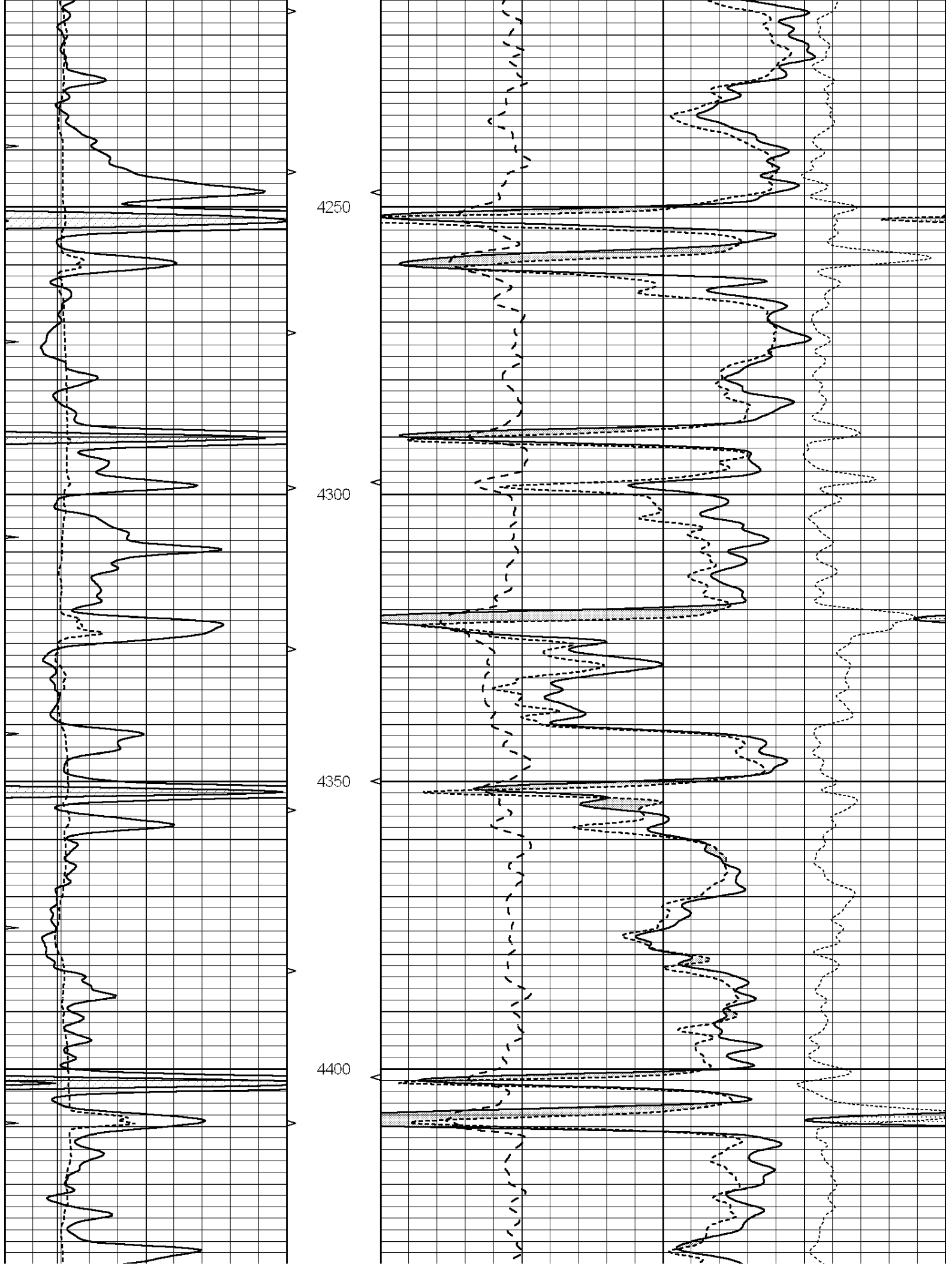
Database File: 011697pe.db
 Dataset Pathname: pass3.19
 Presentation Format: ldt_neu
 Dataset Creation: Sun Oct 27 09:11:33 2013
 Charted by: Depth in Feet scaled 1:240

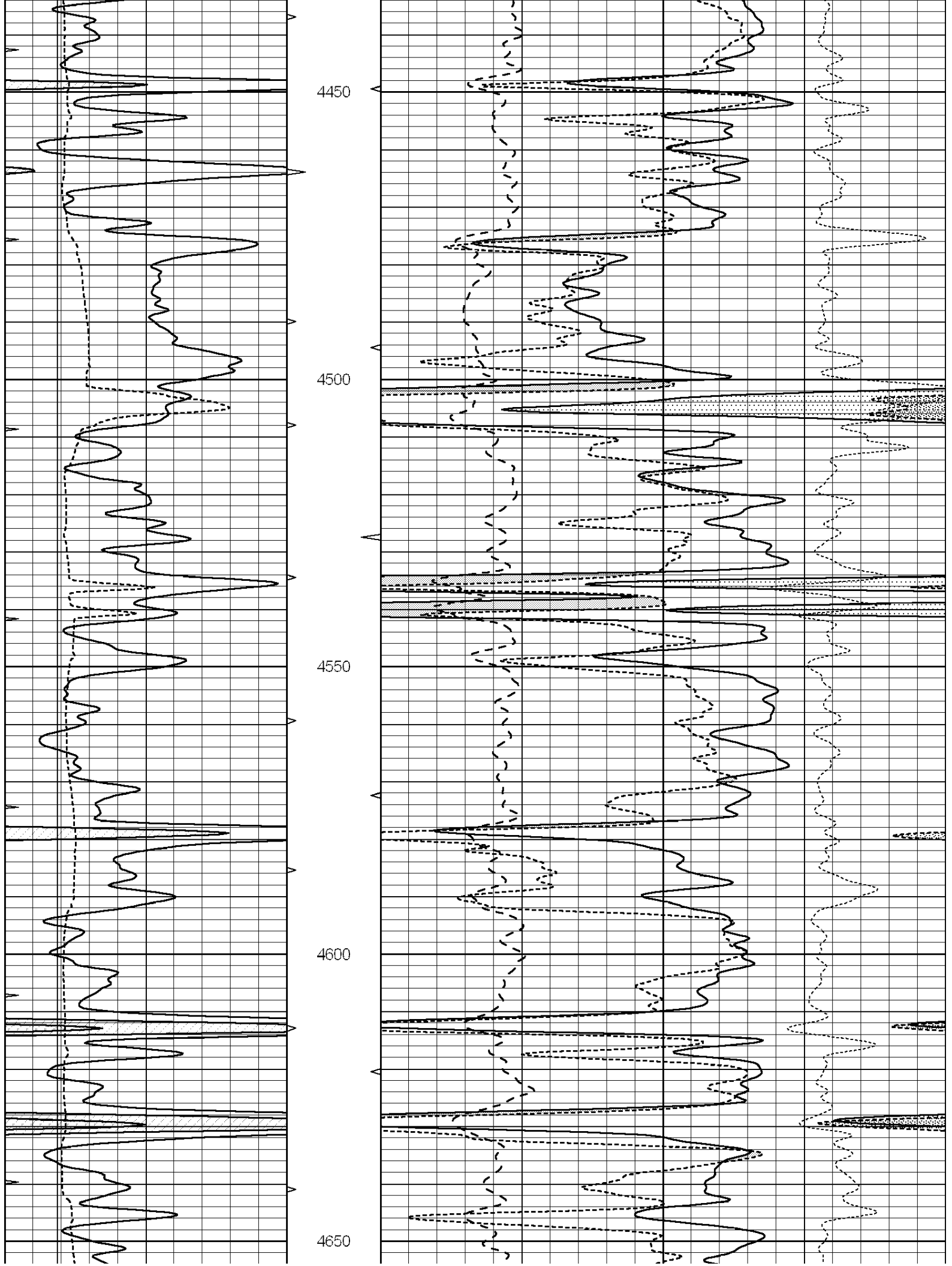
0	GAMMA RAY (GAPI)	150	ABHV	30	COMPENSATED DENSITY (pu)		-10
6	CALIPER (in)	16	10 (ft3)	0	COMPENSATED NEUTRON (pu)		-10
0	MINMK	20	TBHV	0	PE	10	-0.25 CORRECTION (g/cc) 0.25
			0 (ft3)	10			

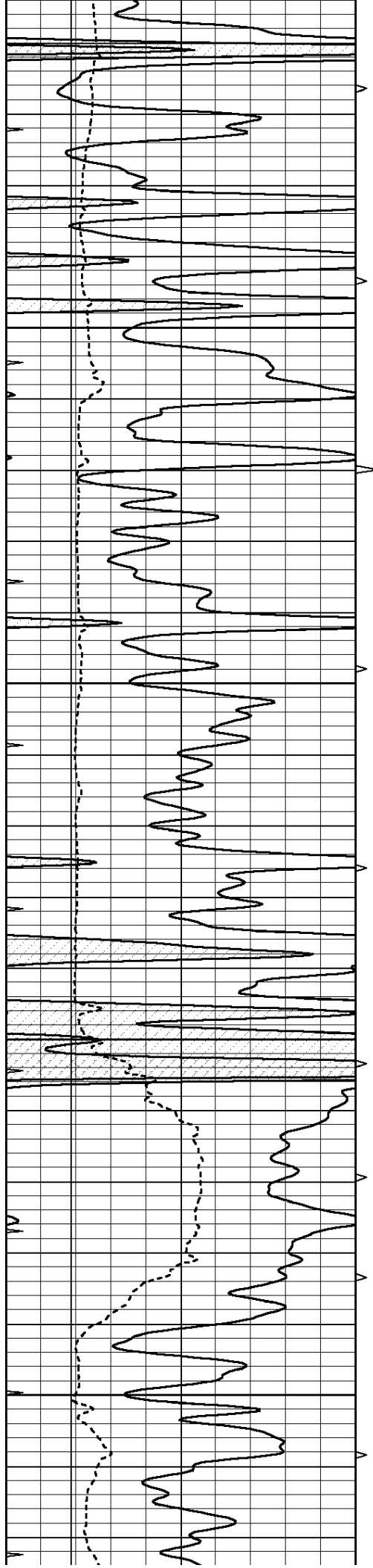










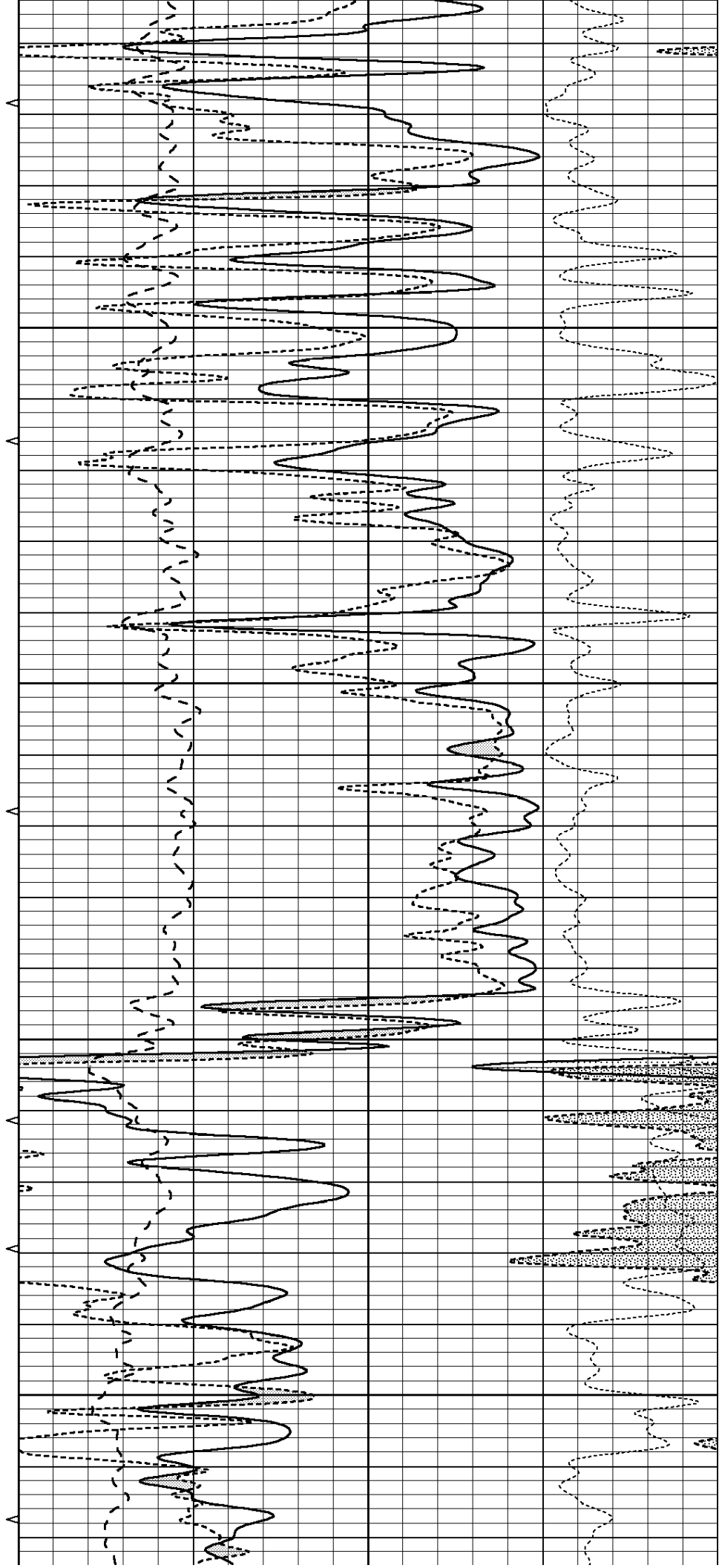


4700

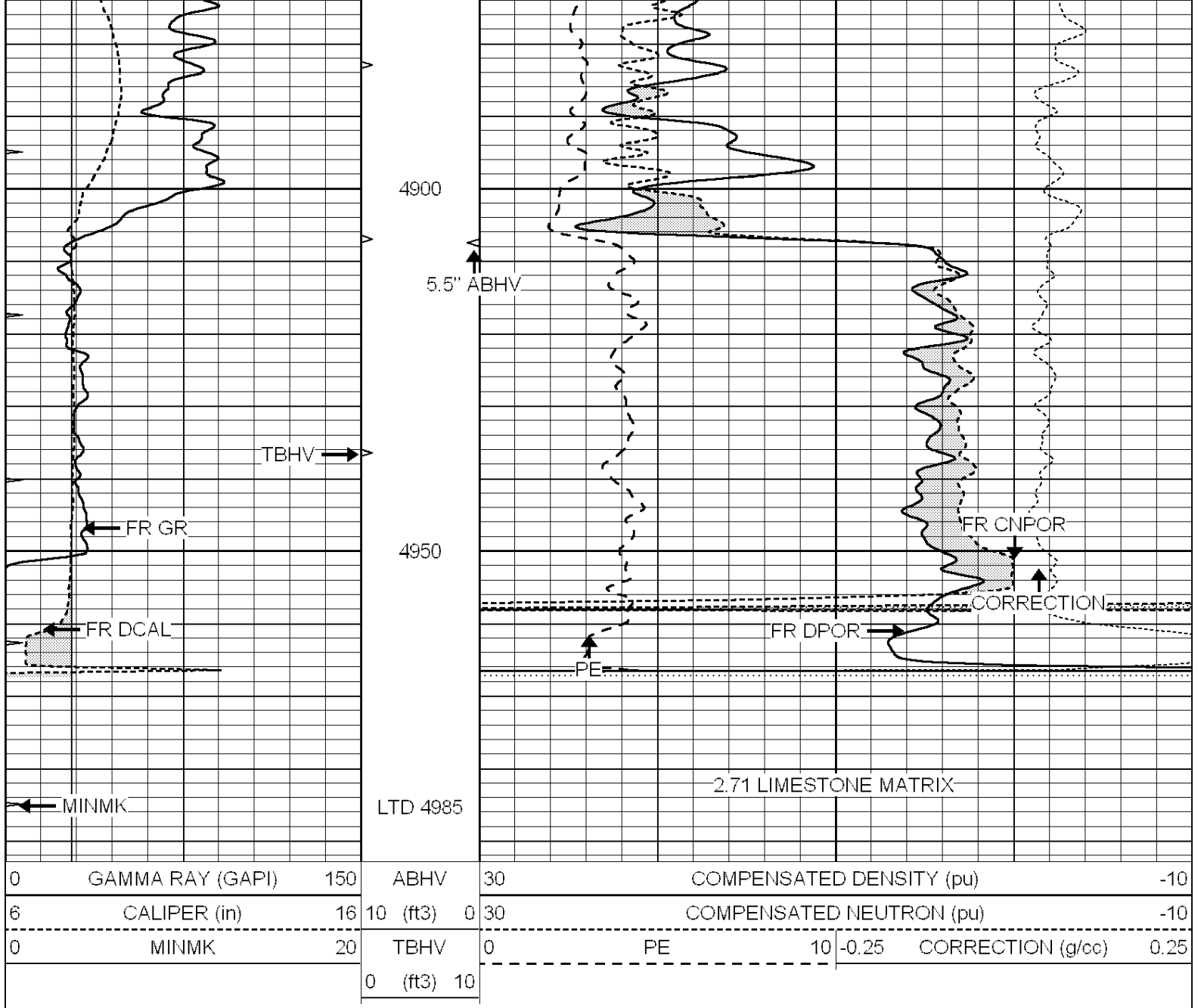
4750

4800

4850



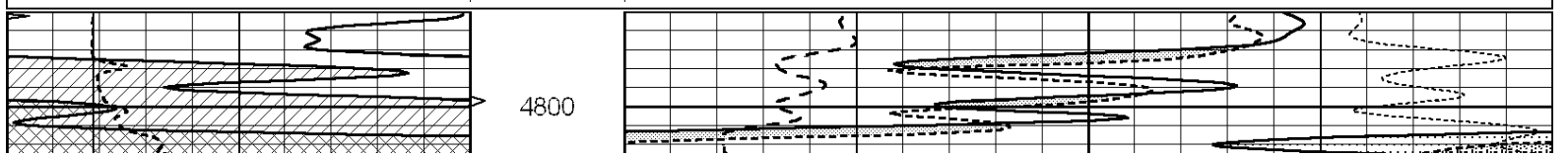
4850

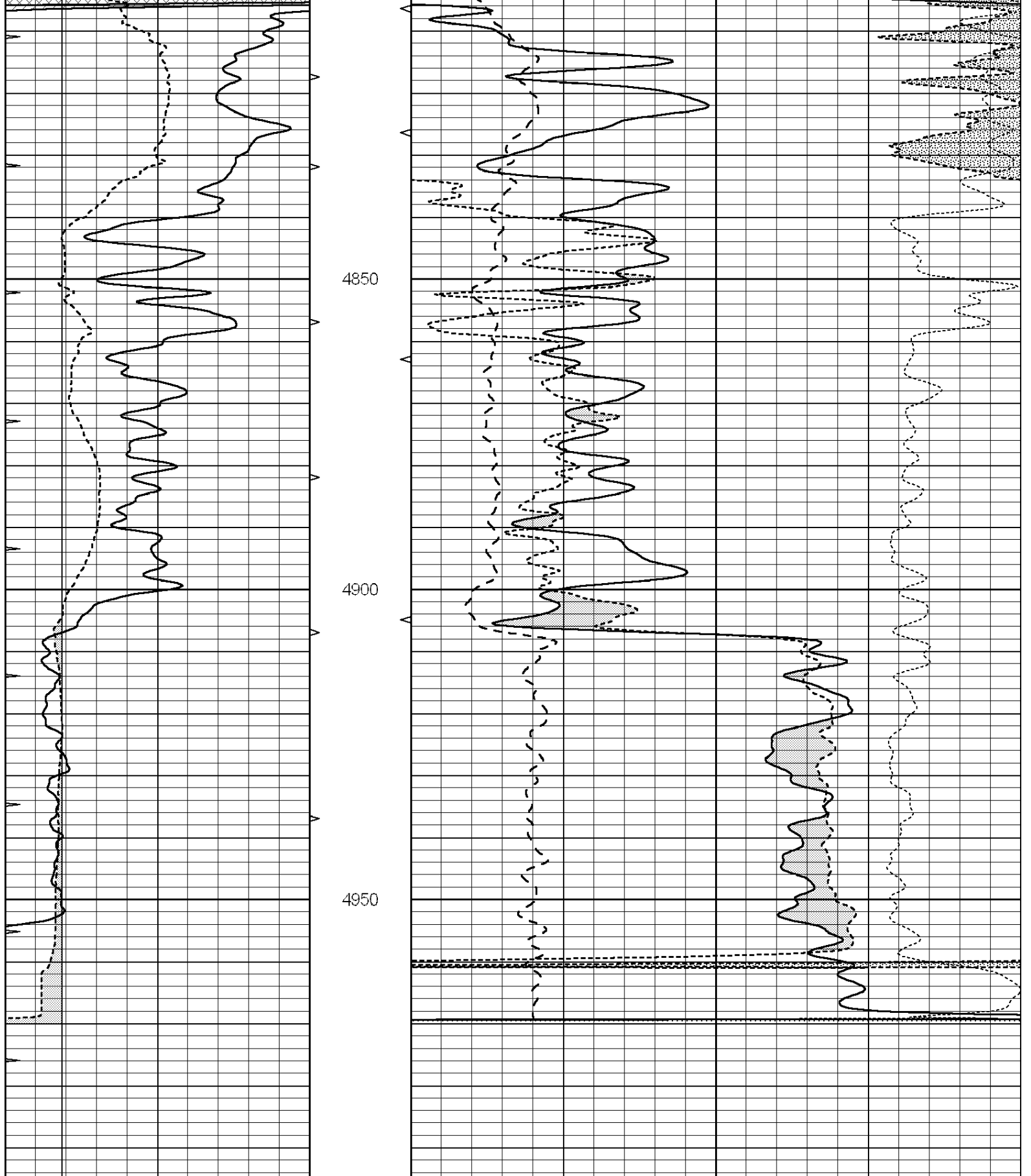


REPEAT SECTION

Database File: 011697pe.db
 Dataset Pathname: pass2.6
 Presentation Format: ldt_neu
 Dataset Creation: Sun Oct 27 09:30:22 2013
 Charted by: Depth in Feet scaled 1:240

0	GAMMA RAY (GAPI)	150	ABHV	30	COMPENSATED DENSITY (pu)	-10
6	CALIPER (in)	16	10 (ft3)	0 30	COMPENSATED NEUTRON (pu)	-10
0	MINMK	20	TBHV	0	PE	10 -0.25
			0 (ft3)	10		CORRECTION (g/cc) 0.25





0	GAMMA RAY (GAPI)	150	ABHV	30	COMPENSATED DENSITY (pu)	-10
6	CALIPER (in)	16	10 (ft3)	0 30	COMPENSATED NEUTRON (pu)	-10
0	MINMK	20	TBHV	0	PE	10 -0.25
			0 (ft3)	10		CORRECTION (g/cc) 0.25

Dual Induction Calibration Report

Serial-Model: PROBE9-DILG
 Surface Cal Performed: Thu Oct 24 00:58:04 2013
 Downhole Cal Performed: Mon Jul 28 12:02:56 2008
 After Survey Verification Performed: Mon Jul 28 12:02:56 2008

Surface Calibration

		Readings			References			Results	
Loop:	Air	Loop		Air	Loop		m	b	
Deep	-0.014	0.629	V	0.000	400.000	mmho/m	650.000	-10.000	
Medium	0.039	0.728	V	0.000	464.000	mmho/m	640.000	-16.000	
Internal:	Zero	Cal		Zero	Cal		m	b	
Deep	0.011	0.610	V	0.000	400.000	mmho/m	667.135	-7.256	
Medium	0.005	0.712	V	0.000	464.000	mmho/m	655.677	-3.102	

Downhole Calibration

		Readings			References			Results	
	Zero	Cal		Zero	Cal		m'	b'	
Deep	0.000	0.000	mmho/m	14.508	388.384	mmho/m	1.000	0.000	
Medium	0.000	0.000	mmho/m	166.367	504.400	mmho/m	1.000	0.000	
LL3		7.500	V		1400.000	Ohm-m			
		0.000	V		20.000	Ohm-m			
		-7.200	V		4000.000	mmho-m			

After Survey Verification

		Readings			Targets			Results	
	Zero	Cal		Zero	Cal		m'	b'	
Deep	0.000	0.000	mmho/m	0.000	0.000	mmho/m	0.000	0.000	
Medium	0.000	0.000	mmho/m	0.000	0.000	mmho/m	0.000	0.000	
LL3		1.000	Ohm-m		1.000	Ohm-m			
		0.000	Ohm-m		0.000	Ohm-m			
		1.000	mmho-m		1.000	mmho-m			

Litho Density Calibration Report

Serial: 004N Model: PRB

Master Calibration

Performed Mon Jun 03 09:36:56 2013

	Background	Magnesium	Aluminum	Sandstone	
Window 1	1417.6	10391.4	3464.6	11537.5	cps
Window 2	1295.0	8959.7	3050.1	9816.4	cps
Window 3	1105.1	5464.2	2051.0	5838.8	cps
Window 4	315.0	317.7	312.9	319.8	cps
Long Space	0.0	7664.6	1755.0	8521.3	cps
Short Space	1.8	1582.4	1040.8	1699.4	cps
Rho		1.7100	2.5900	1.3800	g/cc
Pe		0.0000	2.5700	1.5500	
Rib Angle	: 44.1	Rib Slope	: 0.970	Density/Spine Ratio	: 0.574
Spine Angle	: 74.1	Spine Slope	: 3.519	Spine Intercept	: -17.0

Before Survey Verification

Performed Wed Dec 31 18:00:00 1969

Window 1	0.0	0.0	0.0	0.0	cps
Window 2	0.0	0.0	0.0	0.0	cps
Window 3	0.0	0.0	0.0	0.0	cps
Window 4	0.0	0.0	0.0	0.0	cps
Long Space	0.0	0.0	0.0	0.0	cps
Short Space	0.0	0.0	0.0	0.0	cps
Measured Rho		0.0000	0.0000	0.0000	g/cc
Measured Correction		0.0000	0.0000	0.0000	g/cc
Measured Pe			0.0000	0.0000	

After Survey Verification

Performed Wed Dec 31 18:00:00 1969

Window 1	0.0	0.0	0.0	0.0	cps
Window 2	0.0	0.0	0.0	0.0	cps
Window 3	0.0	0.0	0.0	0.0	cps
Window 4	0.0	0.0	0.0	0.0	cps
Long Space	0.0	0.0	0.0	0.0	cps
Short Space	0.0	0.0	0.0	0.0	cps
Measured Rho		0.0000	0.0000	0.0000	g/cc
Measured Correction		0.0000	0.0000	0.0000	g/cc
Measured Pe			0.0000	0.0000	

Compensated Neutron Calibration Report

Serial Number: 070808
Tool Model: Probe

PRE-SURVEY VERIFICATION

Detector	Readings	Measured	Target
Short Space	cps		
Long Space	cps	pu	pu

POST-SURVEY VERIFICATION

Detector	Readings	Measured	Target
Short Space	cps		
Long Space	cps	pu	pu

Gamma Ray Calibration Report

Serial Number: 070559
Tool Model: OPEN_GR
Performed: Mon Oct 21 18:53:38 2013

Calibrator Value: 1.0 GAPI
Background Reading: 0.0 cps
Calibrator Reading: 1.0 cps
Sensitivity: 0.3000 GAPI/cps