



**COMPLETION
& PRODUCTION
SERVICES CO.**

**MICRO
LOG**

Company EAGLE CREEK CORPORATION
Well SIMONS FARMS #1-12
Field WILDCAT
County WICHITA
State KANSAS

Company EAGLE CREEK CORPORATION
Well SIMONS FARMS #1-12
Field WILDCAT
County WICHITA State KANSAS

Location: API # : 15-203-20236-0000
1977' FSL & 1328' FWL
SEC 12 TWP 17S RGE 35W
Permanent Datum GROUND LEVEL Elevation 3168
Log Measured From KELLY BUSHING 8' A.G.L.
Drilling Measured From KELLY BUSHING
Other Services
CDL/CNL/PE
DIL/SONIC
Elevation
K.B. 3176
D.F. 3174
G.L. 3168

Date	10/27/13		
Run Number	TWO		
Depth Driller	4980		
Depth Logger	4985		
Bottom Logged Interval	4963		
Top Log Interval	3600		
Casing Driller	8 5/8"@265'		
Casing Logger	265		
Bit Size	7 7/8"		
Type Fluid in Hole	CHEMICAL MUD	CHLORIDES 11,000 PPM	
Density / Viscosity	9.0/58		
pH / Fluid Loss	10.5/10.4		
Source of Sample	FLOWLINE		
Rin @ Meas. Temp	.500@80F		
Rmf @ Meas. Temp	.375@80F		
Rmc @ Meas. Temp	.600@80F		
Source of Rmf / Rmc	MEASUREMENT		
Rin @ BHT	.320@125F		
Time Circulation Stopped	4.5 HOURS		
Time Logger on Bottom	6:15 A.M.		
Maximum Recorded Temperature	125F		
Equipment Number	4854		
Location	HAYS, KANSAS		
Recorded By	JEFF LUEBBERS		
Witnessed By	DAVE CALLEWAERT		

<<< Fold Here >>>

All interpretations are opinions based on inferences from electrical or other measurements and we cannot and do not guarantee the accuracy or correctness of any interpretation, and we shall not, except in the case of gross or willful negligence on our part, be liable or responsible for any loss, costs, damages, or expenses incurred or sustained by anyone resulting from any interpretation made by any of our officers, agents or employees. These interpretations are also subject to our general terms and conditions set out in our current Price Schedule.

Comments

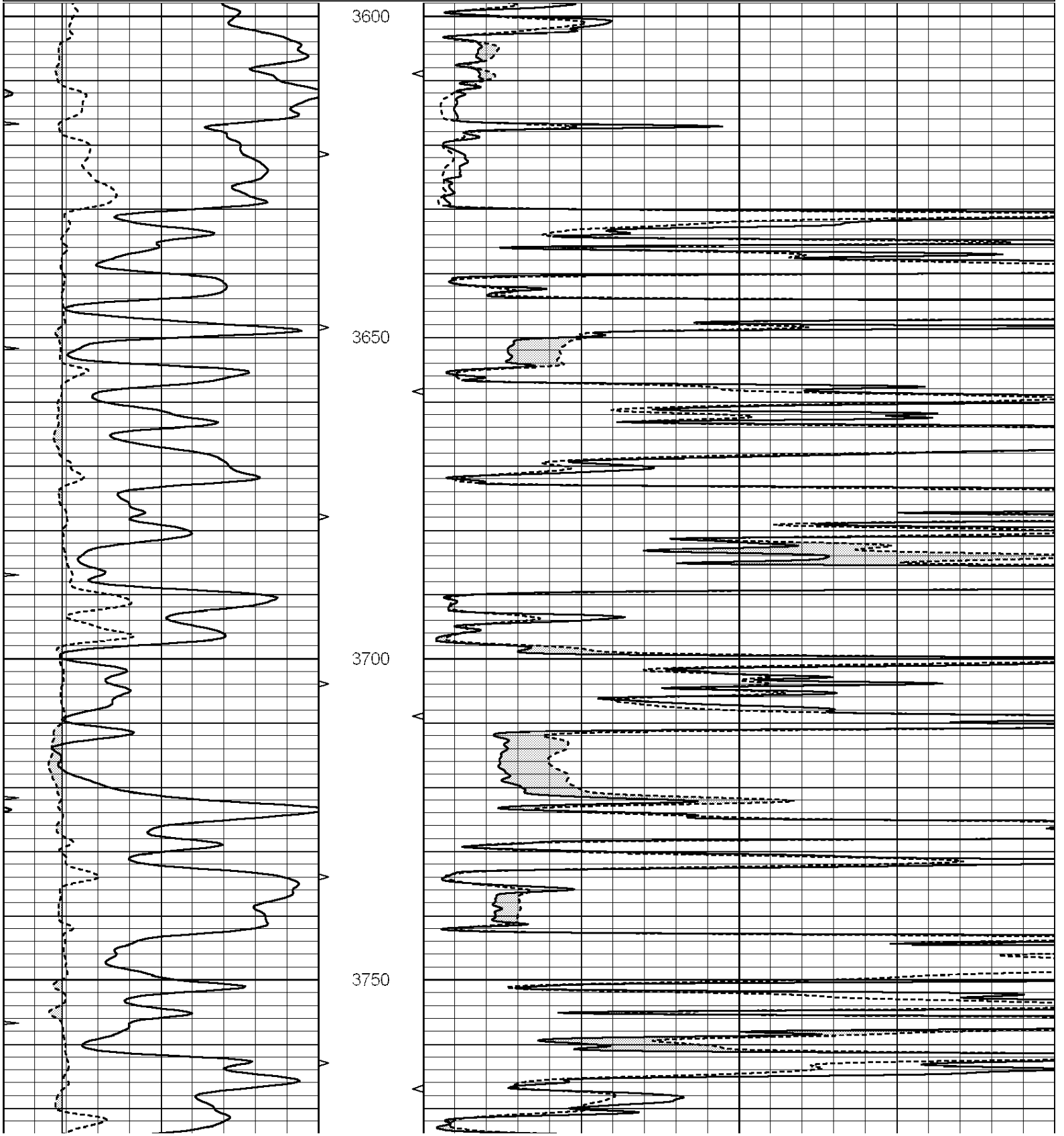
THANK YOU FOR USING "NABORS" HAYS, KANSAS (785) 628-6395
DIRECTIONS
SCOTT CITY, KS., 12W. ON HWY 96 TO (SCOTT/WICHITA COUNTY LINE), 6N., 1W., 1 1/2N., E. INTO

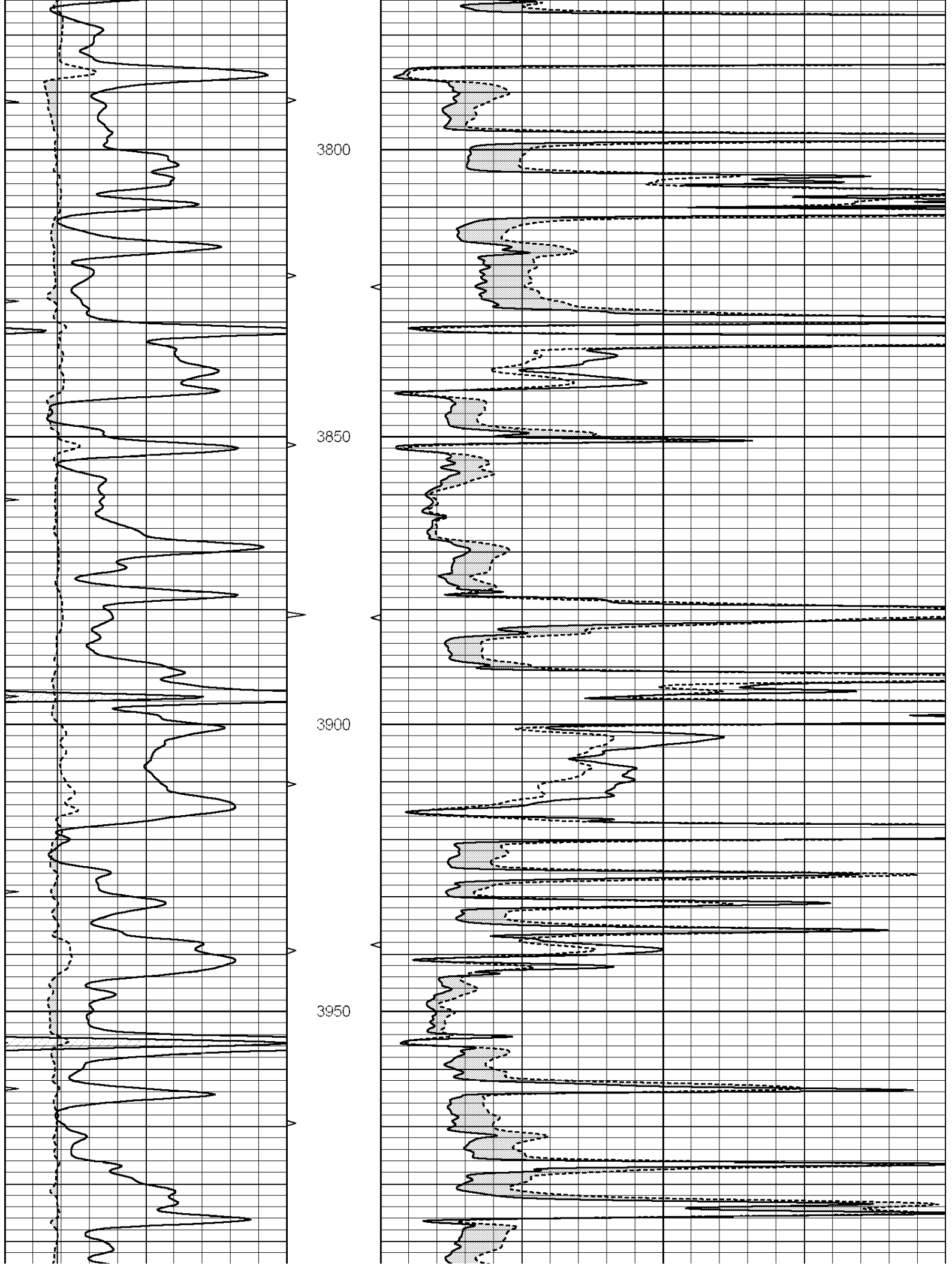


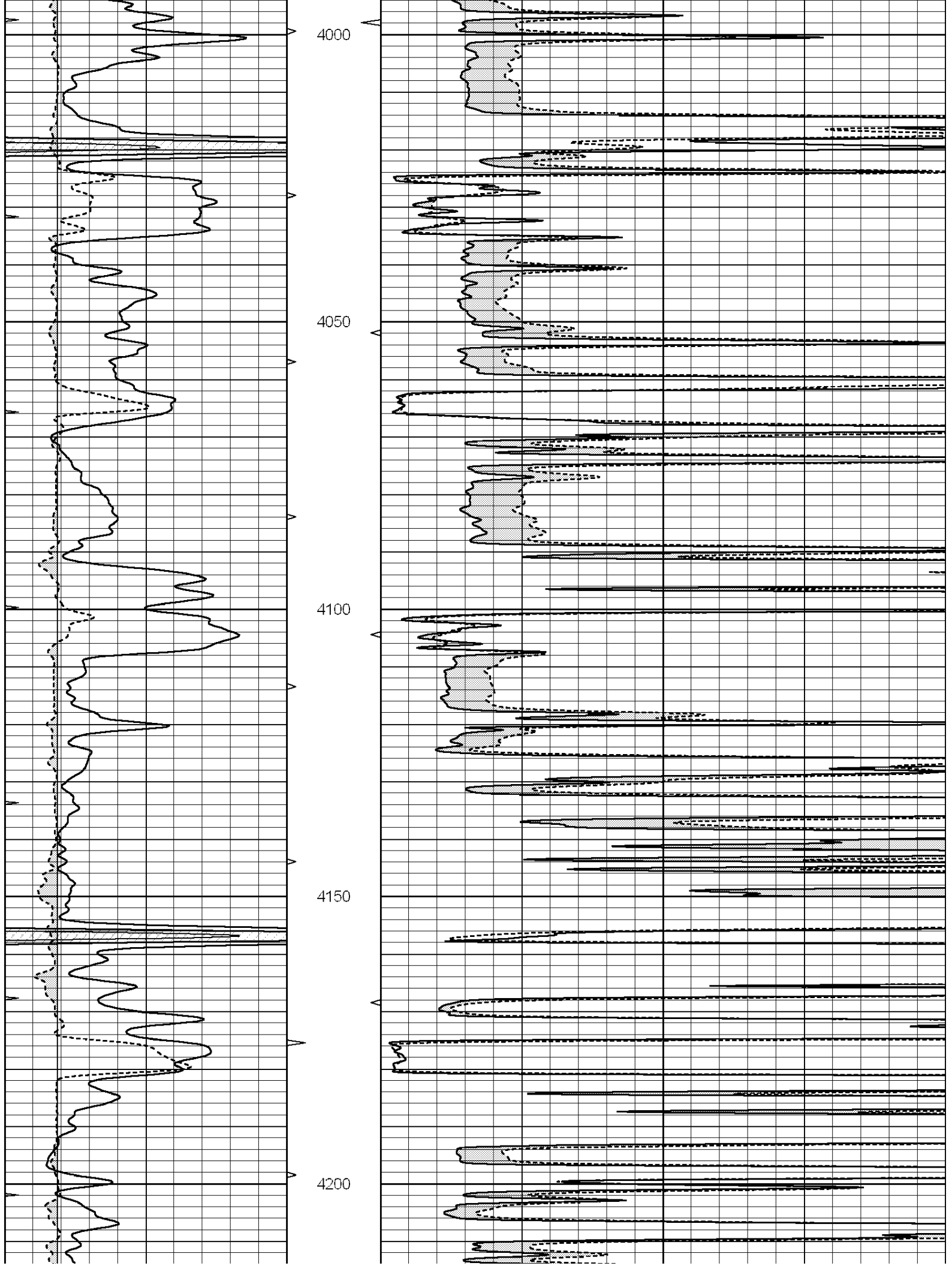
MAIN SECTION

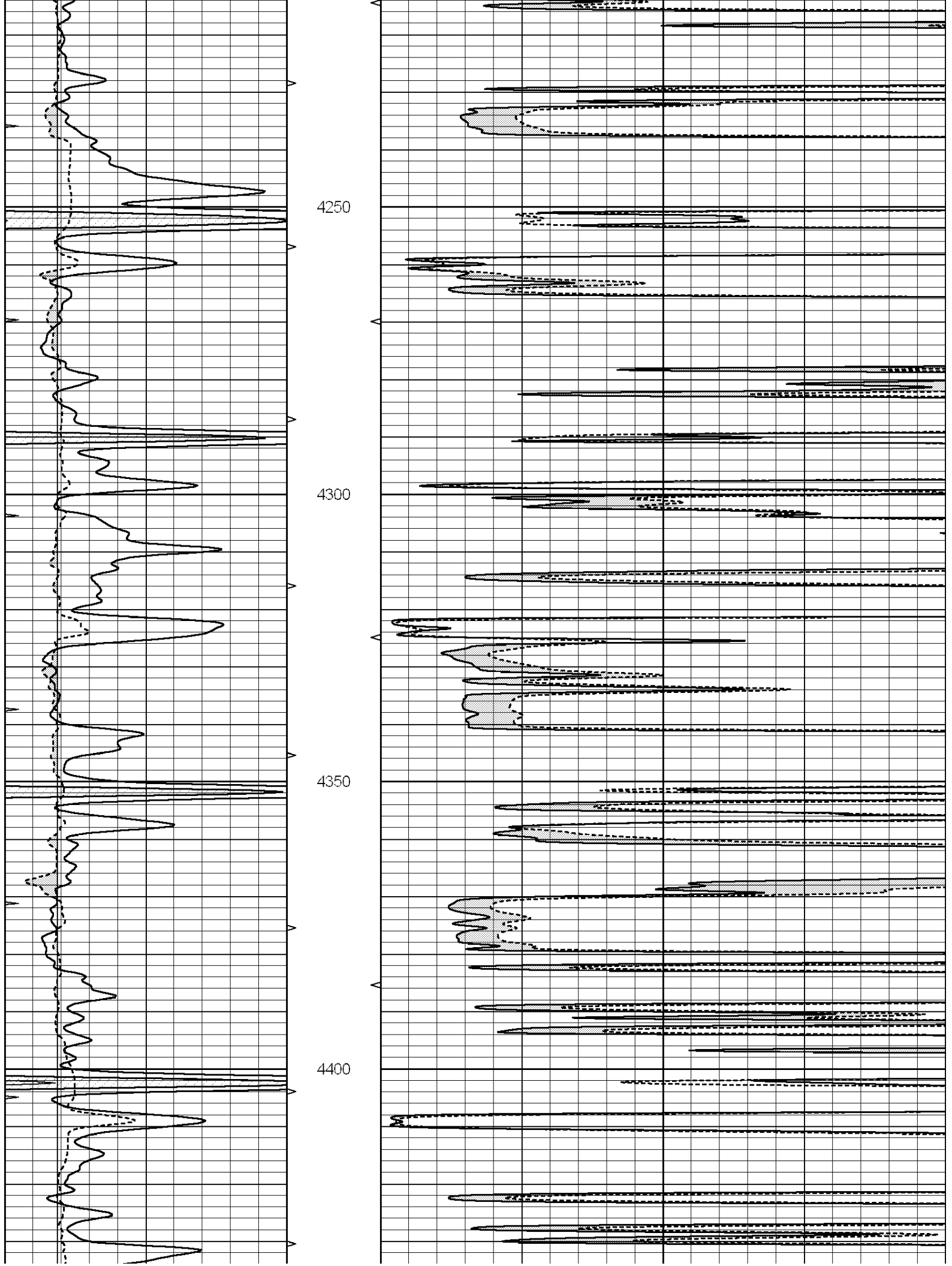
Database File: 011697pe.db
 Dataset Pathname: pass6.3
 Presentation Format: micro
 Dataset Creation: Sun Oct 27 10:12:33 2013
 Charted by: Depth in Feet scaled 1:240

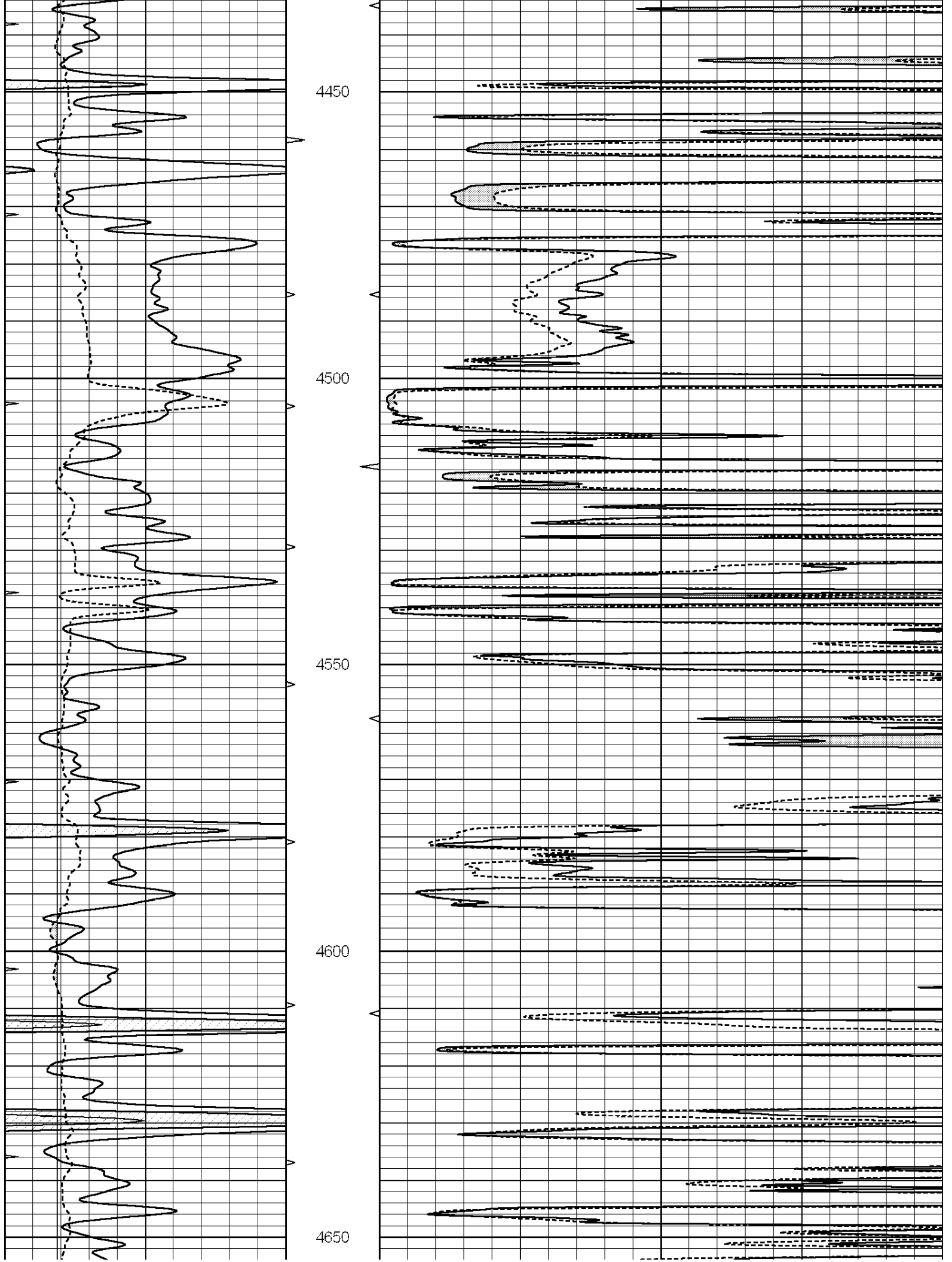
0	GAMMA RAY (GAPI)	150	ABHV	0	MEL1.5 (Ohm-m)	40
6	CALIPER (in)	16	10 (ft3)	0	MEL2.0 (Ohm-m)	40
0	MINMK	20	TBHV			
			0 (ft3)	10		

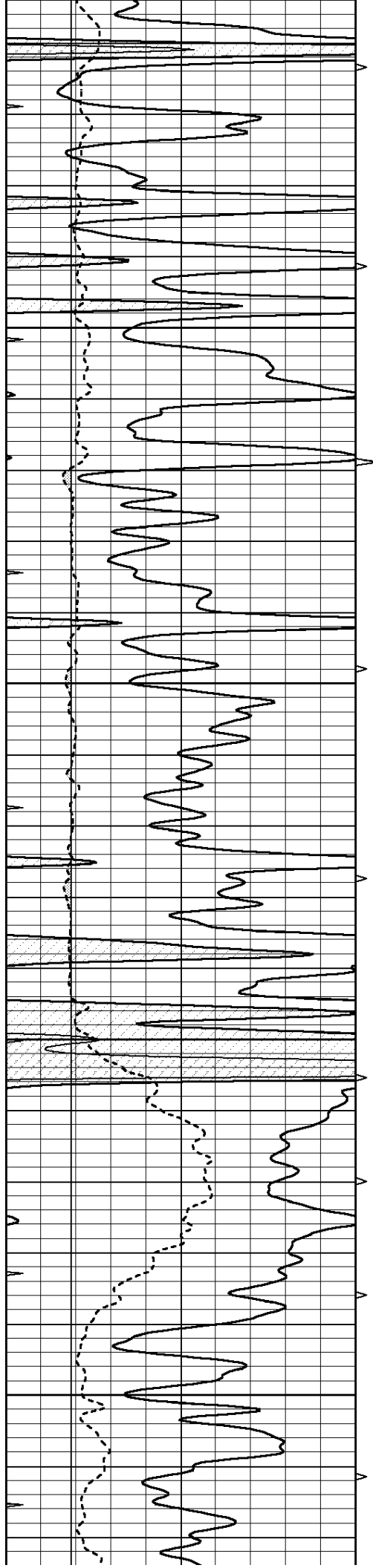










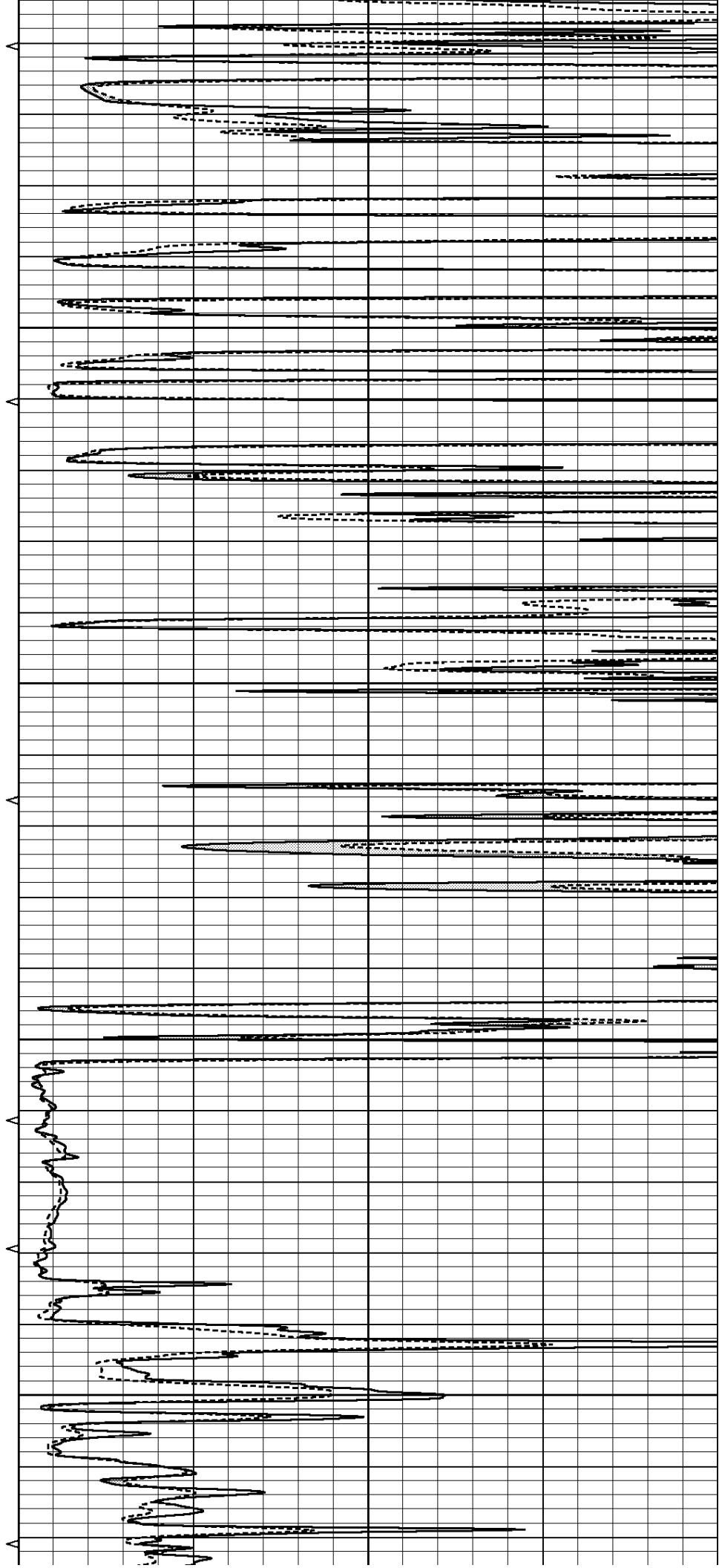


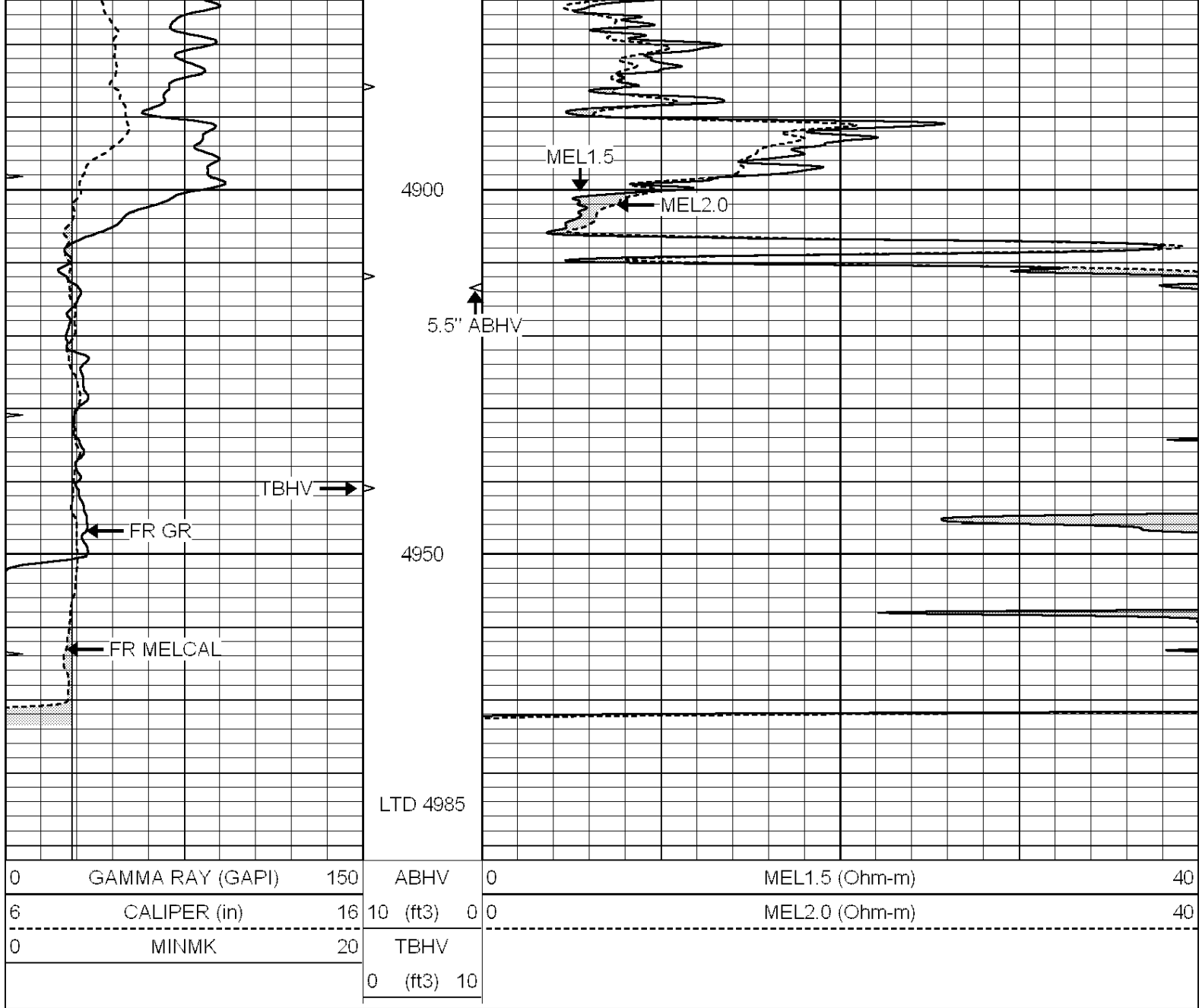
4700

4750

4800

4850

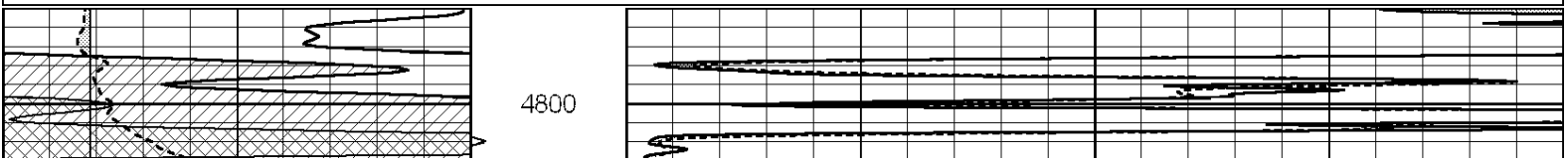


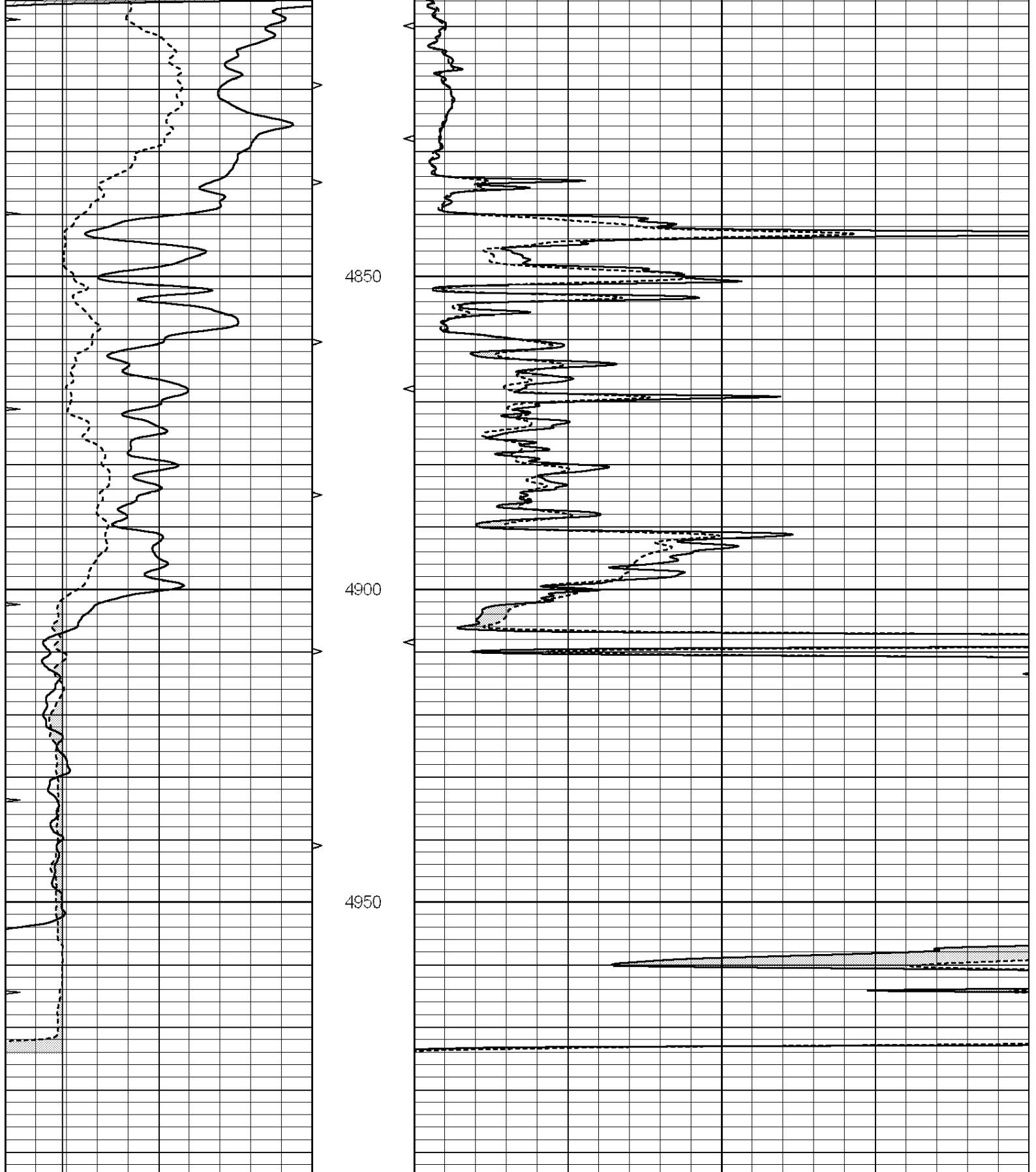


REPEAT SECTION

Database File: 011697pe.db
 Dataset Pathname: pass5.2
 Presentation Format: micro
 Dataset Creation: Sun Oct 27 10:02:27 2013
 Charted by: Depth in Feet scaled 1:240

0	GAMMA RAY (GAPI)	150	ABHV	0	MEL1.5 (Ohm-m)	40
6	CALIPER (in)	16	10 (ft3)	0	MEL2.0 (Ohm-m)	40
0	MINMK	20	TBHV			
			0 (ft3)	10		





0	GAMMA RAY (GAPI)	150	ABHV	0	MEL1.5 (Ohm-m)	40
6	CALIPER (in)	16	10 (ft3)	0 0	MEL2.0 (Ohm-m)	40
0	MINMK	20	TBHV			
			0 (ft3)	10		

Database File: 011697/pe.db
Dataset Pathname: pass6.3
Dataset Creation: Sun Oct 27 10:12:33 2013

MICRO Calibration Report

Serial Number: MICRO5
Tool Model: PROBE
Performed: Mon Oct 07 12:02:19 2013

Caliper Calibration: Gain=3.399 Offset=-5.556

References Low Cal High Cal
Readings 8.400 15.000
 4.106 6.048

1.5" Calibration: Gain=42.000 Offset=-1.000

References Low Cal High Cal
Readings 0.000 20.000
 0.015 1.005

2" Calibration: Gain=55.000 Offset=-1.300

References Low Cal High Cal
Readings 0.000 20.000
 0.009 0.910

Gamma Ray Calibration Report

Serial Number: GR3
Tool Model: OPEN
Performed: Thu Oct 24 03:09:09 2013

Calibrator Value: 200.0 GAPI

Background Reading: 3.0 cps
Calibrator Reading: 186.0 cps

Sensitivity: 1.5000 GAPI/cps