



**COMPLETION
& PRODUCTION
SERVICES CO.**

**DUAL INDUCTION
LOG**

Company EAGLE CREEK CORPORATION
Well SIMONS FARMS #1-12
Field WILDCAT
County WICHITA
State KANSAS

Company EAGLE CREEK CORPORATION
Well SIMONS FARMS #1-12
Field WILDCAT
County WICHITA State KANSAS

Location: API # : 15-203-20236-0000
1977' FSL & 1328' FWL
SEC 12 TWP 17S RGE 35W
Permanent Datum GROUND LEVEL Elevation 3168
Log Measured From KELLY BUSHING 8' A.G.L.
Drilling Measured From KELLY BUSHING
Other Services
CDL/CNL/PE
MEL/SONIC
Elevation
K.B. 3176
D.F. 3174
G.L. 3168

Date	10/27/13		
Run Number	ONE		
Depth Driller	4980		
Depth Logger	4985		
Bottom Logged Interval	4983		
Top Log Interval	00		
Casing Driller	8 5/8"@265'		
Casing Logger	265		
Bit Size	7 7/8"		
Type Fluid in Hole	CHEMICAL MUD	CHLORIDES 11,000 PPM	
Density / Viscosity	9.0/58		
pH / Fluid Loss	10.5/10.4		
Source of Sample	FLOWLINE		
Rim @ Meas. Temp	.500@80F		
Rmf @ Meas. Temp	.375@80F		
Rmc @ Meas. Temp	.600@80F		
Source of Rmf / Rmc	MEASUREMENT		
Rim @ BHT	.320@125F		
Time Circulation Stopped	2.5 HOURS		
Time Logger on Bottom	6:15 A.M.		
Maximum Recorded Temperature	125F		
Equipment Number	4854		
Location	HAYS, KANSAS		
Recorded By	JEFF LUEBBERS		
Witnessed By	DAVE CALLEWAERT		

<<< Fold Here >>>

All interpretations are opinions based on inferences from electrical or other measurements and we cannot and do not guarantee the accuracy or correctness of any interpretation, and we shall not, except in the case of gross or willful negligence on our part, be liable or responsible for any loss, costs, damages, or expenses incurred or sustained by anyone resulting from any interpretation made by any of our officers, agents or employees. These interpretations are also subject to our general terms and conditions set out in our current Price Schedule.

Comments

THANK YOU FOR USING "NABORS" HAYS, KANSAS (785) 628-6395
DIRECTIONS
SCOTT CITY, KS., 12W. ON HWY 96 TO (SCOTT/WICHITA COUNTY LINE), 6N., 1W., 1 1/2N., E. INTO



MAIN SECTION

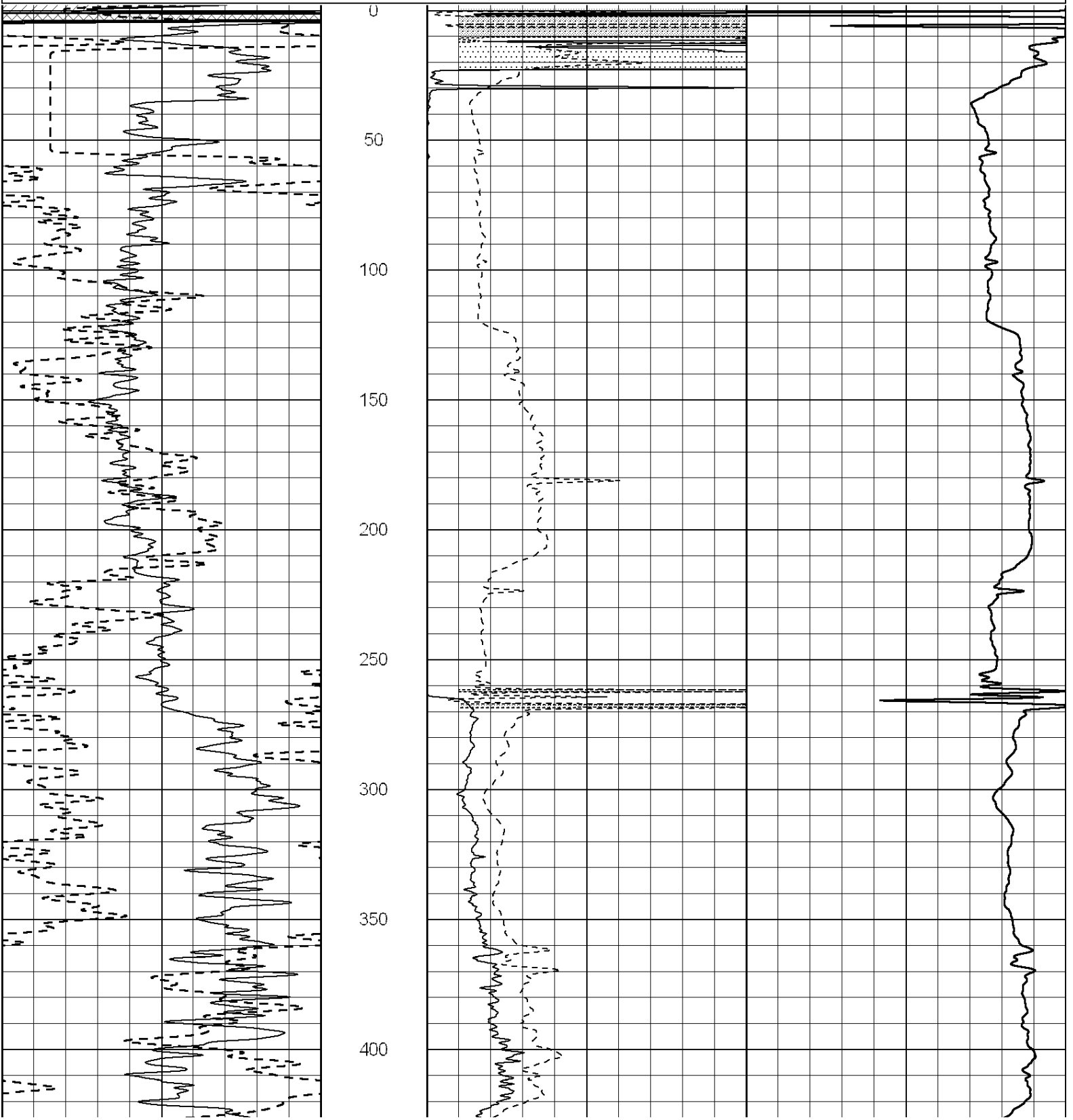
Database File: 011697pe.db
 Dataset Pathname: pass3.19
 Presentation Format: dil2
 Dataset Creation: Sun Oct 27 09:11:33 2013
 Charted by: Depth in Feet scaled 1:600

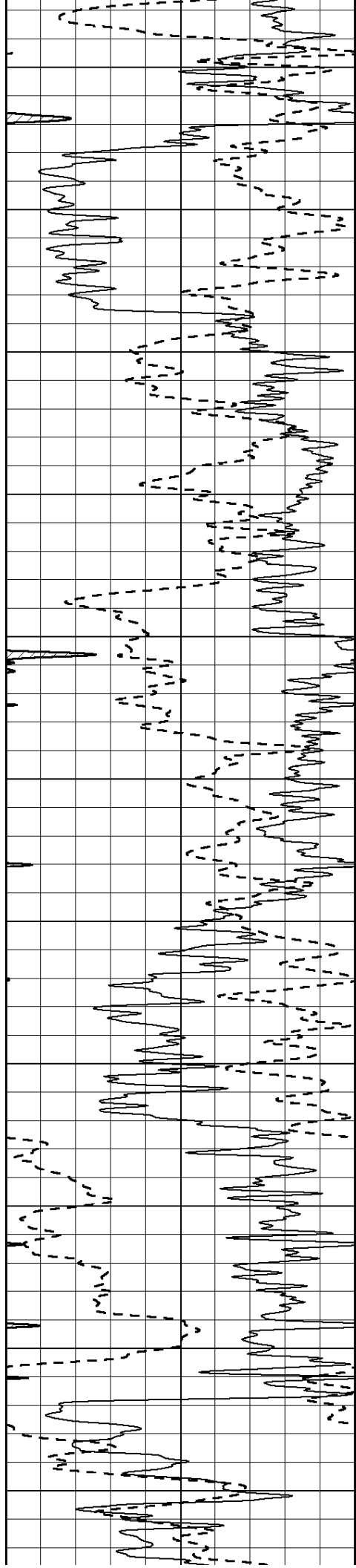
0	Gamma Ray (GAPI)	150
-100	SP (mV)	100

0	RLL3 (Ohm-m)	50
0	RILD (Ohm-m)	50

1000	CILD (mmho/m)	0
------	---------------	---

50	RILD X10 (Ohm-m)	500
50	RLL3 X10 (Ohm-m)	500





450

500

550

600

650

700

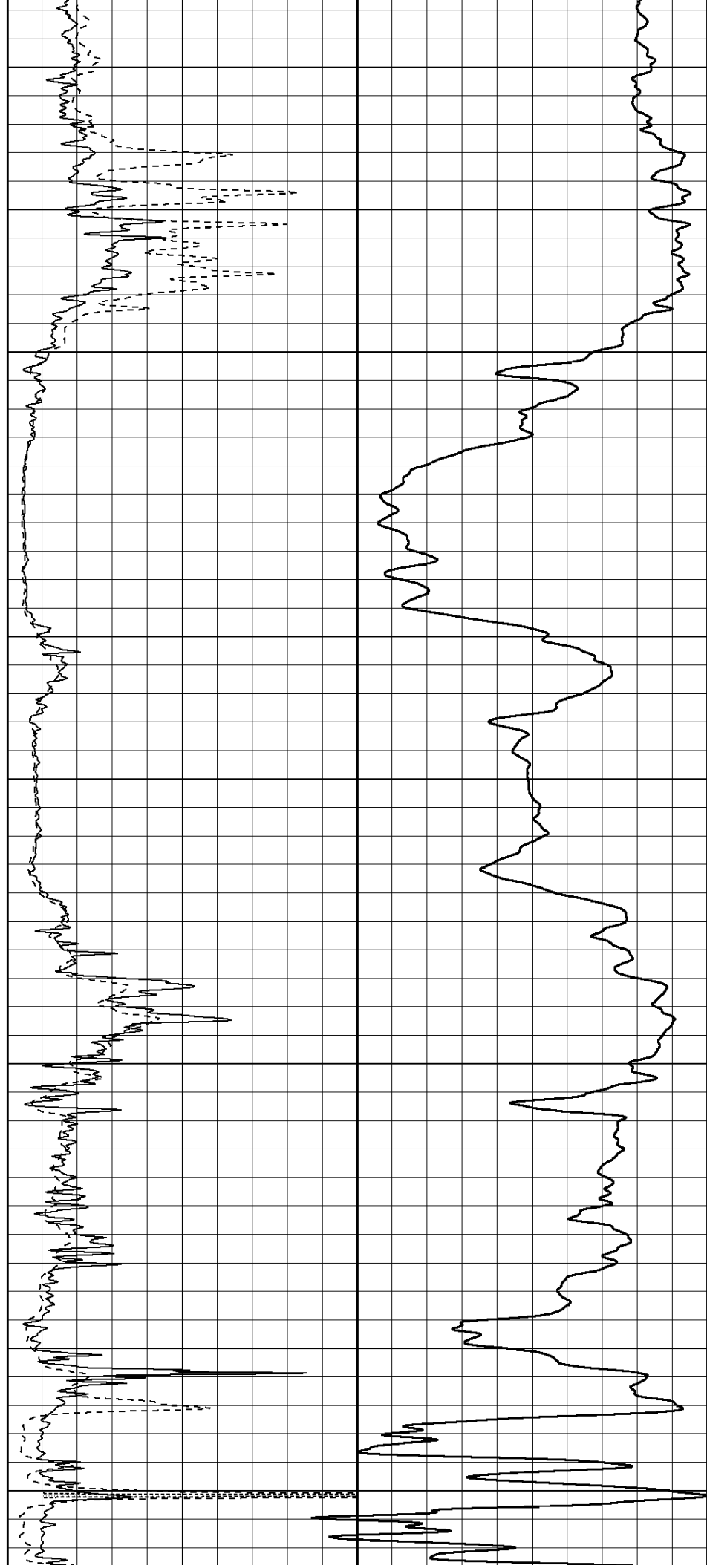
750

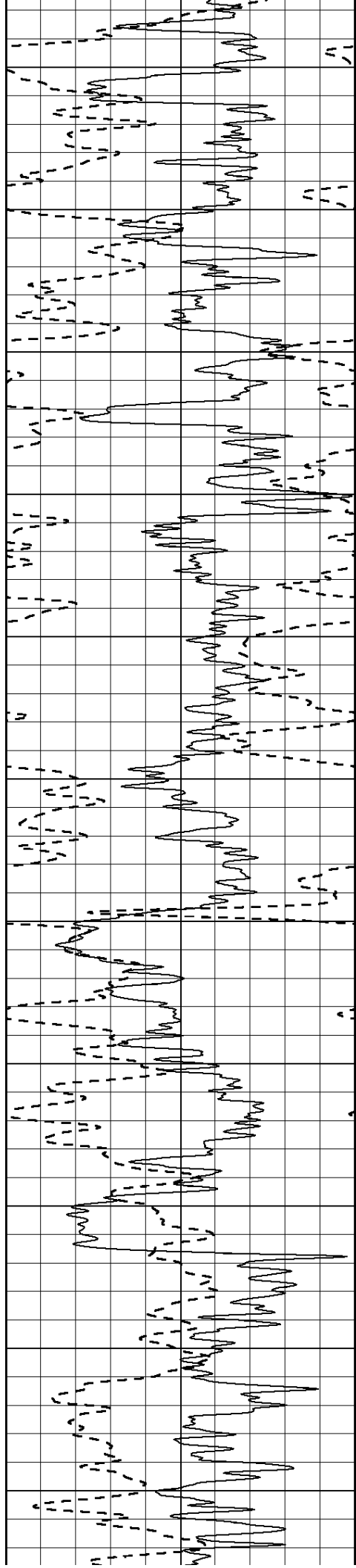
800

850

900

950





1000

1050

1100

1150

1200

1250

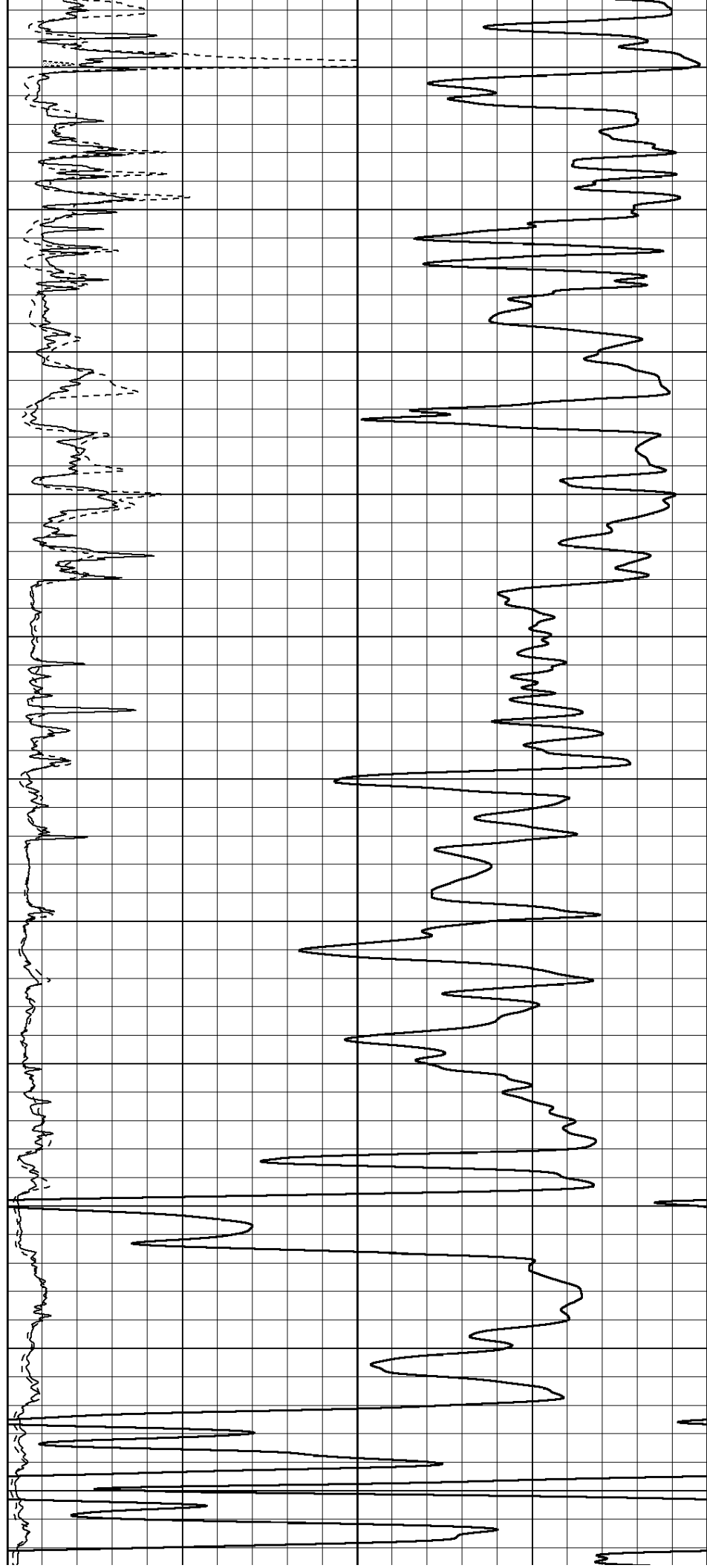
1300

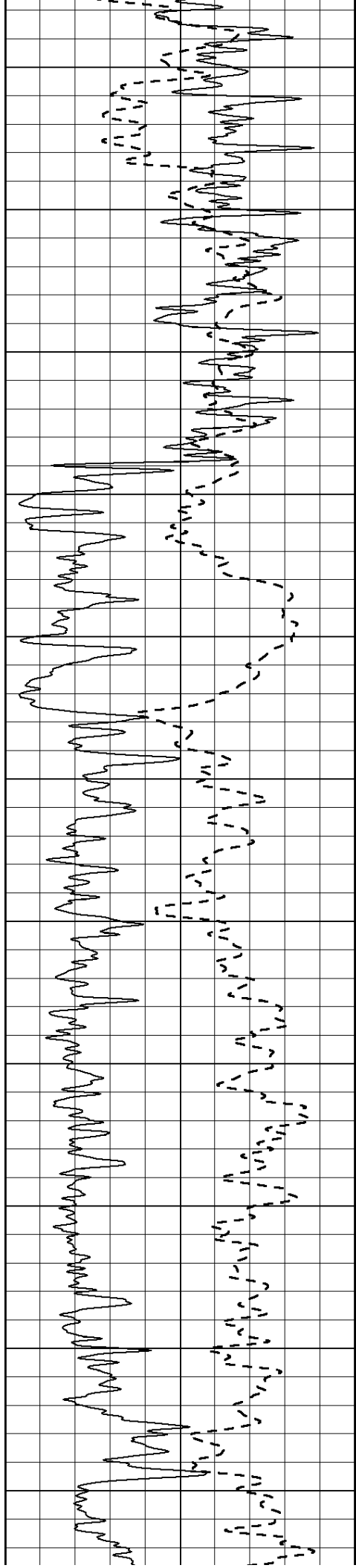
1350

1400

1450

1500





1550

1600

1650

1700

1750

1800

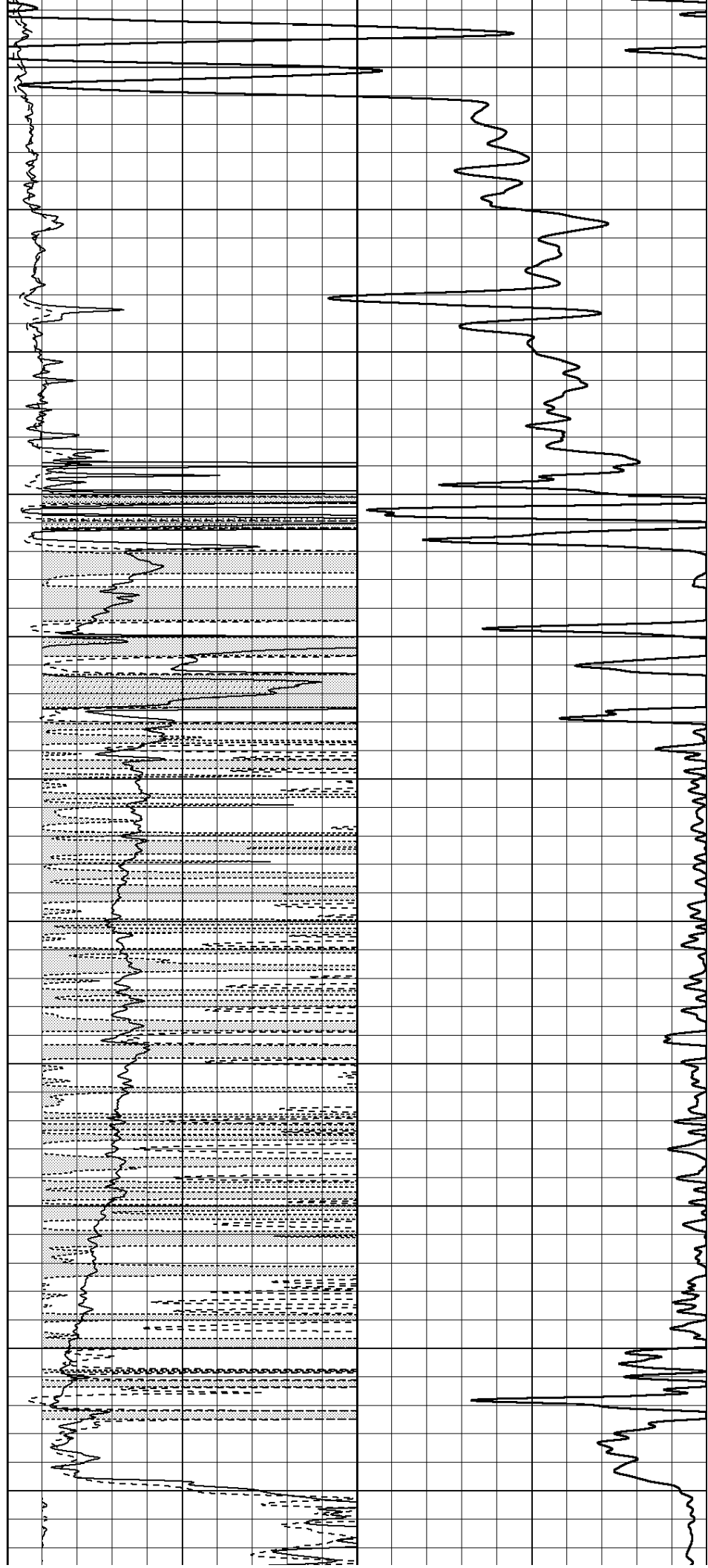
1850

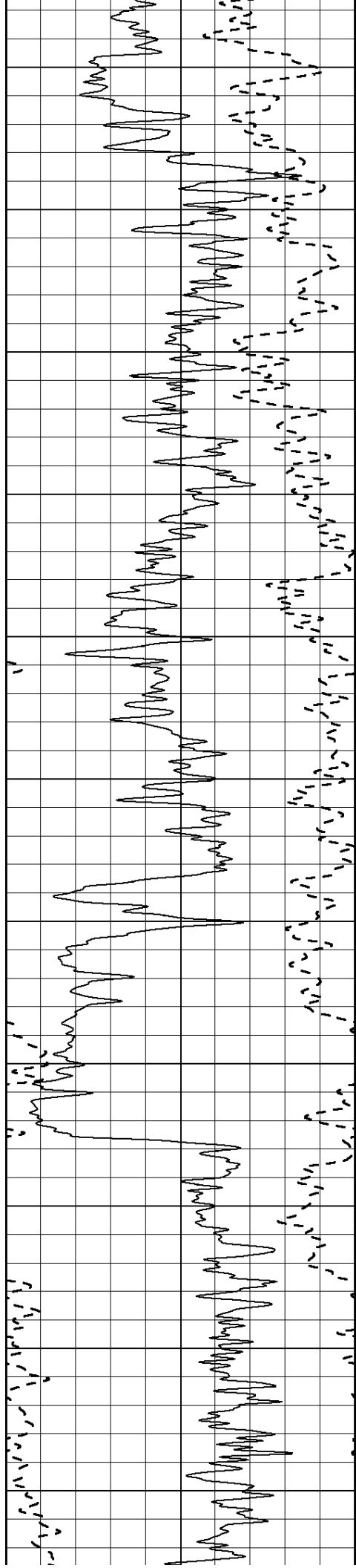
1900

1950

2000

2050





2100

2150

2200

2250

2300

2350

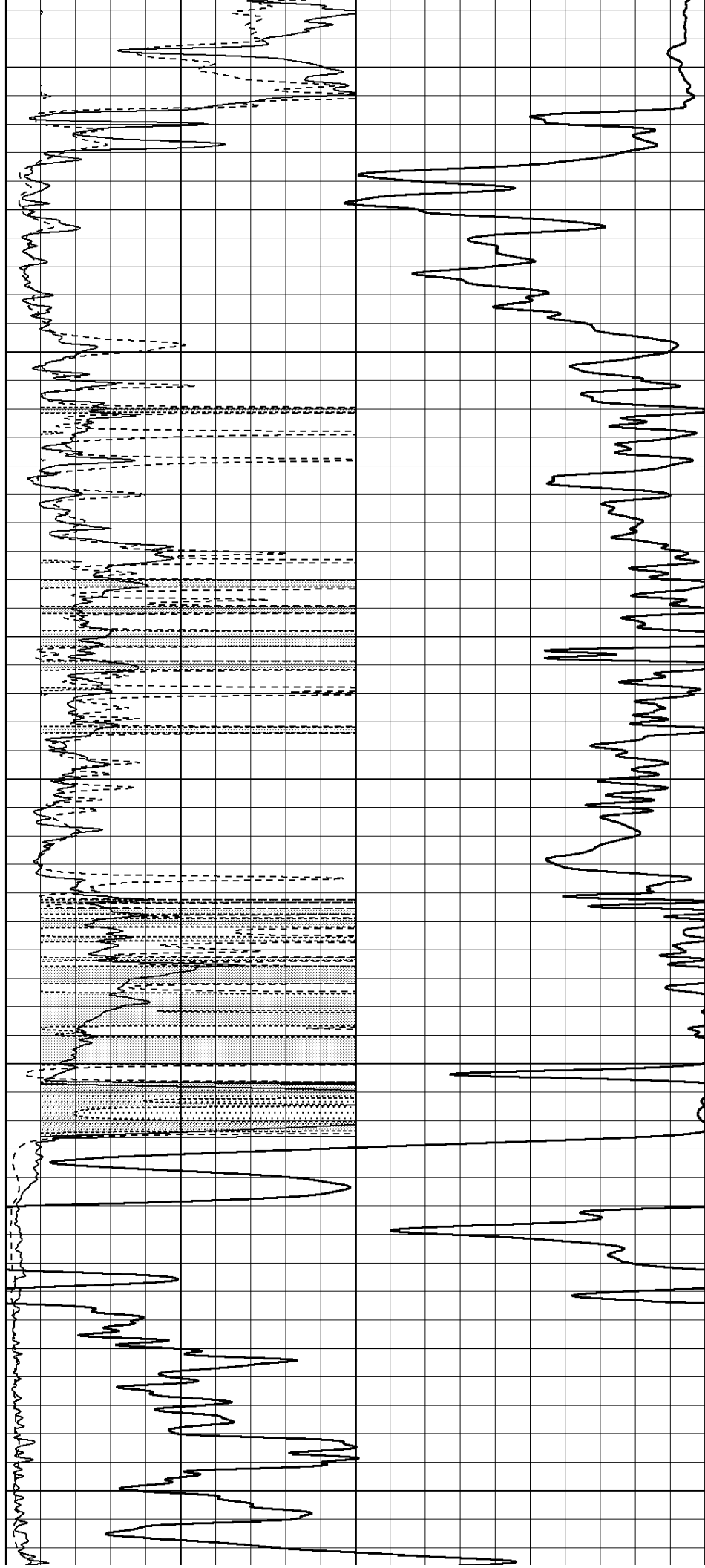
2400

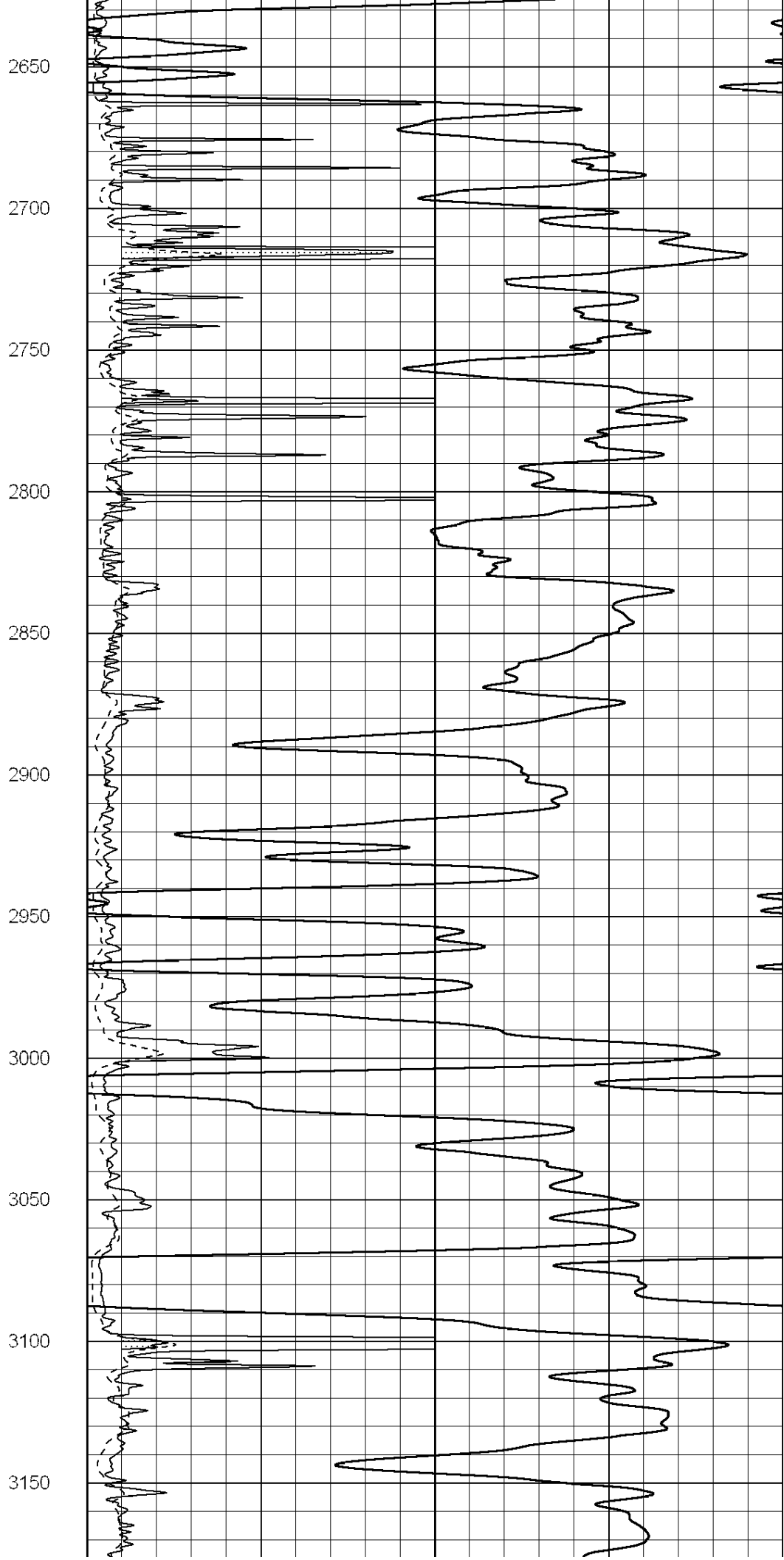
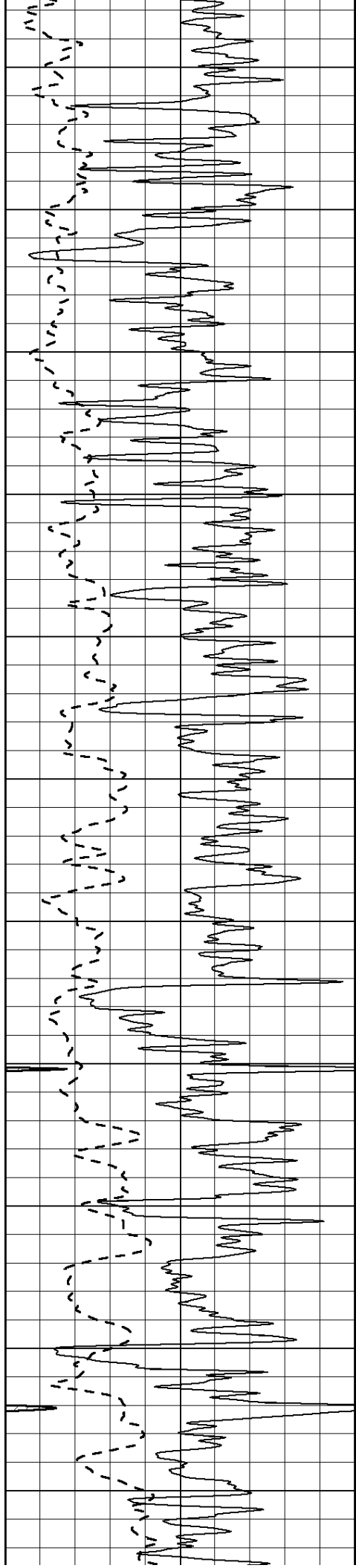
2450

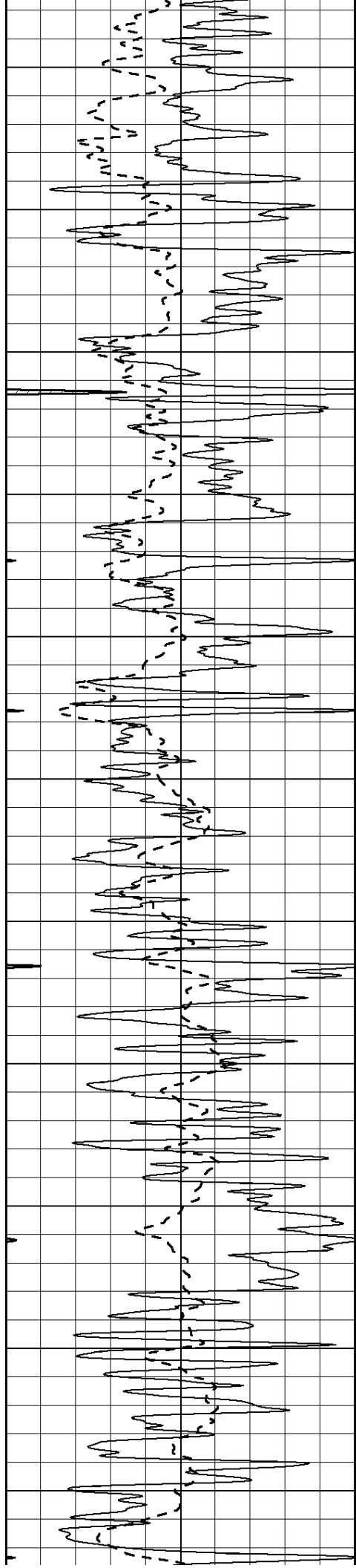
2500

2550

2600







3200

3250

3300

3350

3400

3450

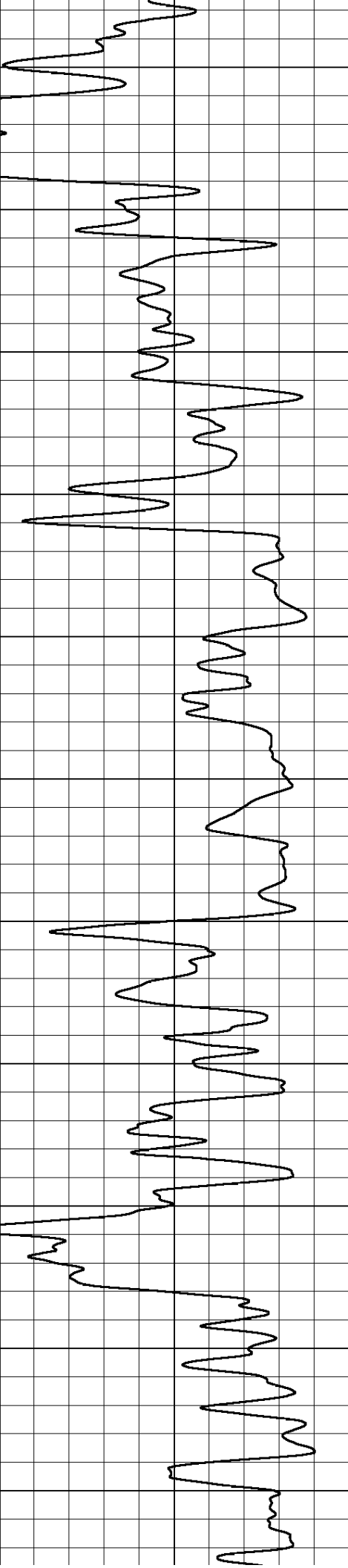
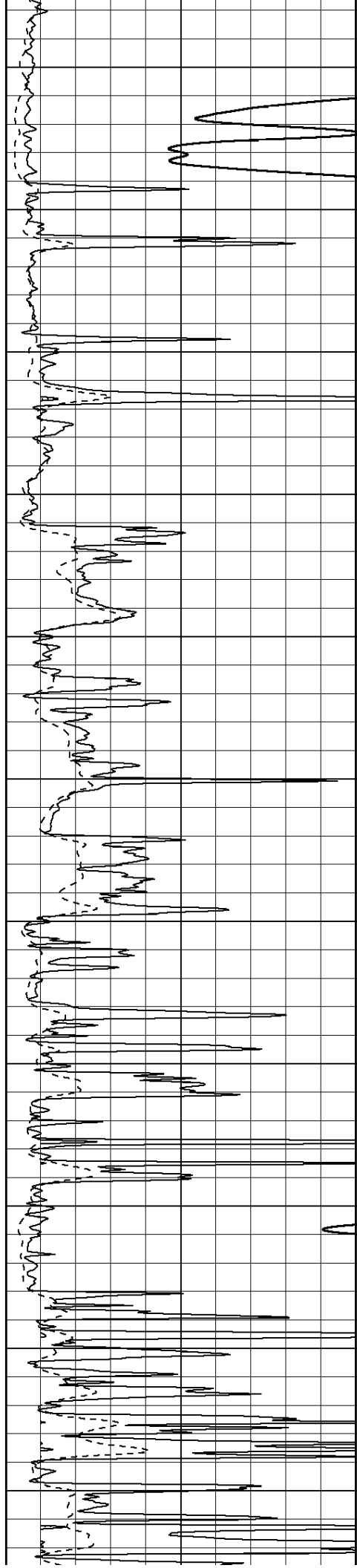
3500

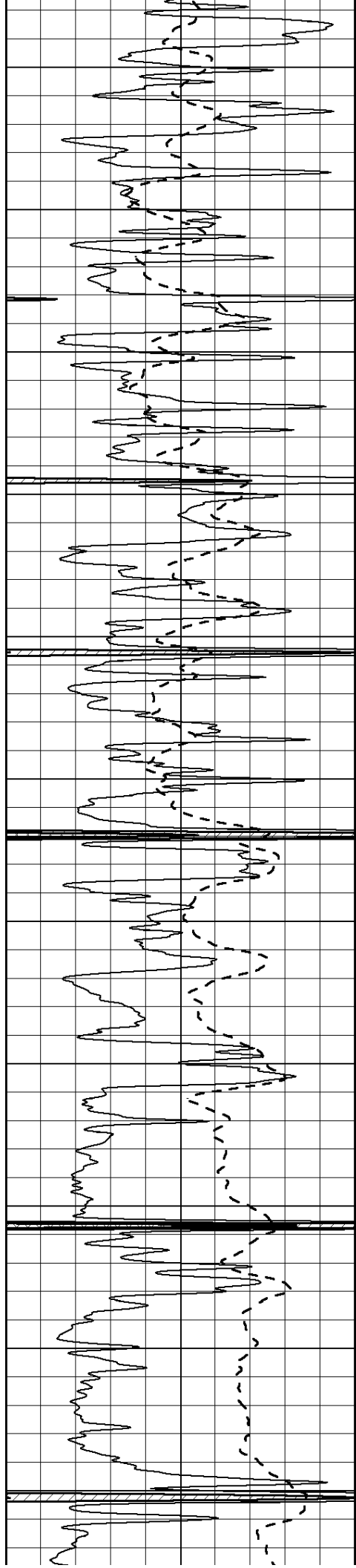
3550

3600

3650

3700





3750

3800

3850

3900

3950

4000

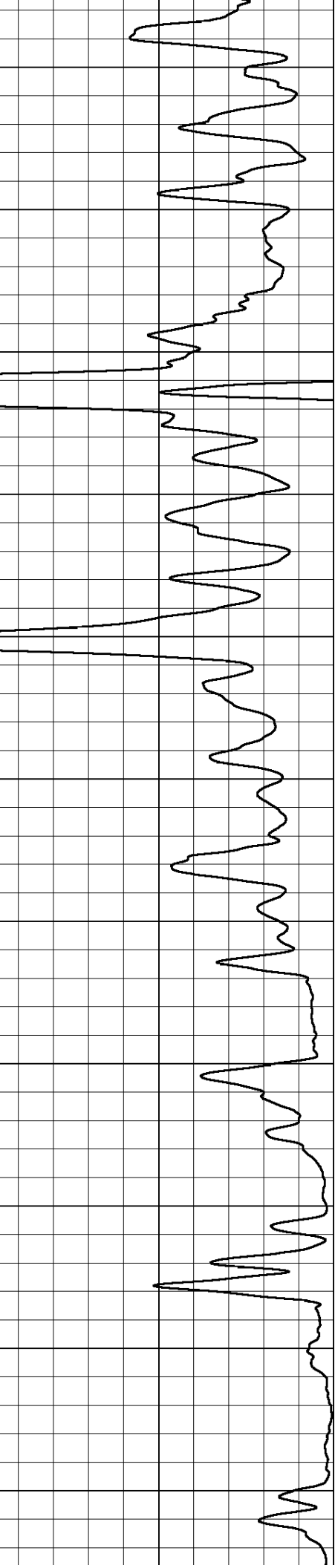
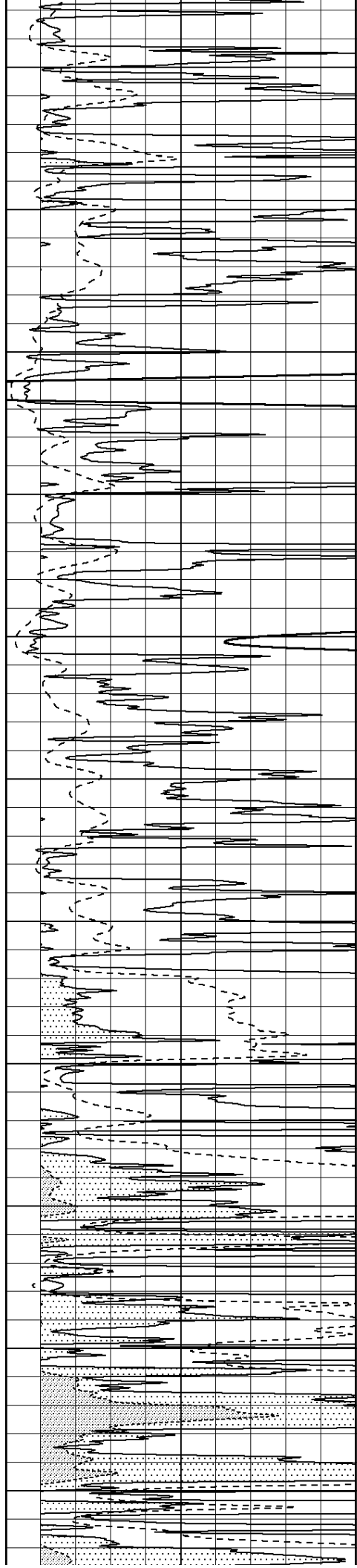
4050

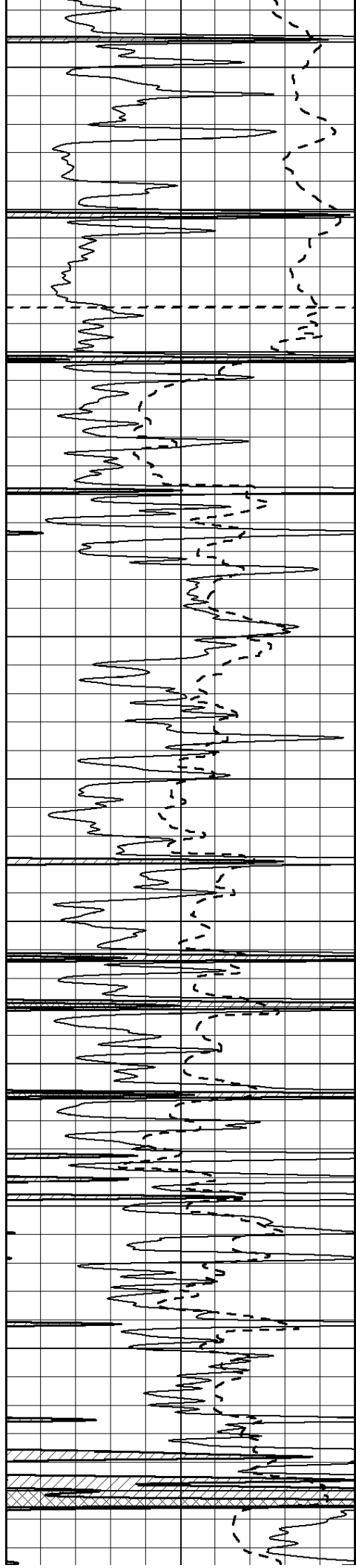
4100

4150

4200

4250





4300

4350

4400

4450

4500

4550

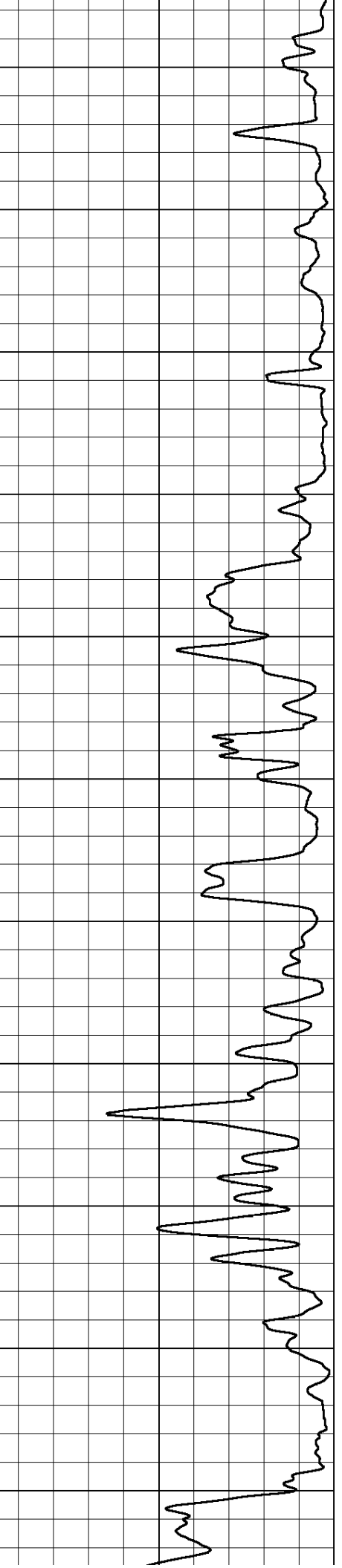
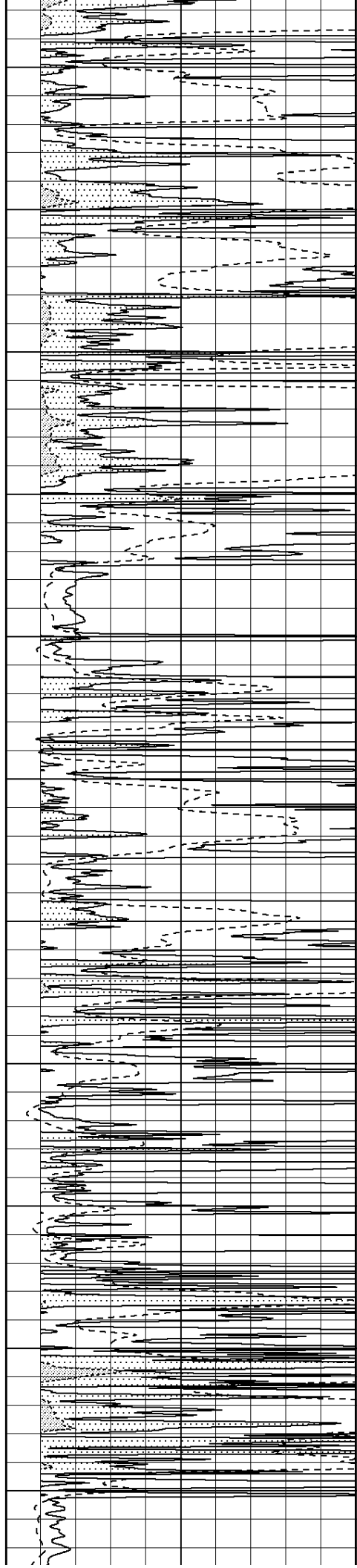
4600

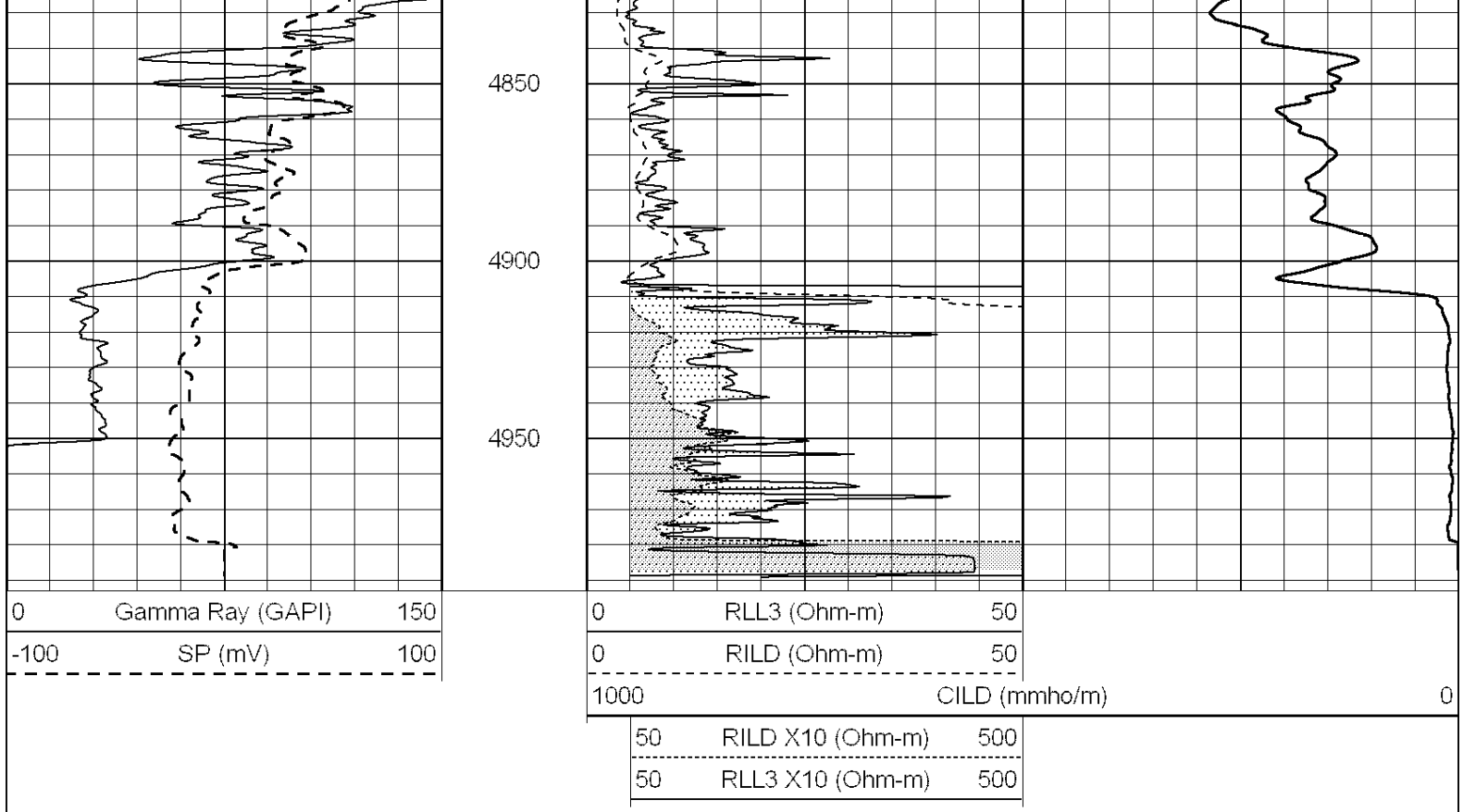
4650

4700

4750

4800



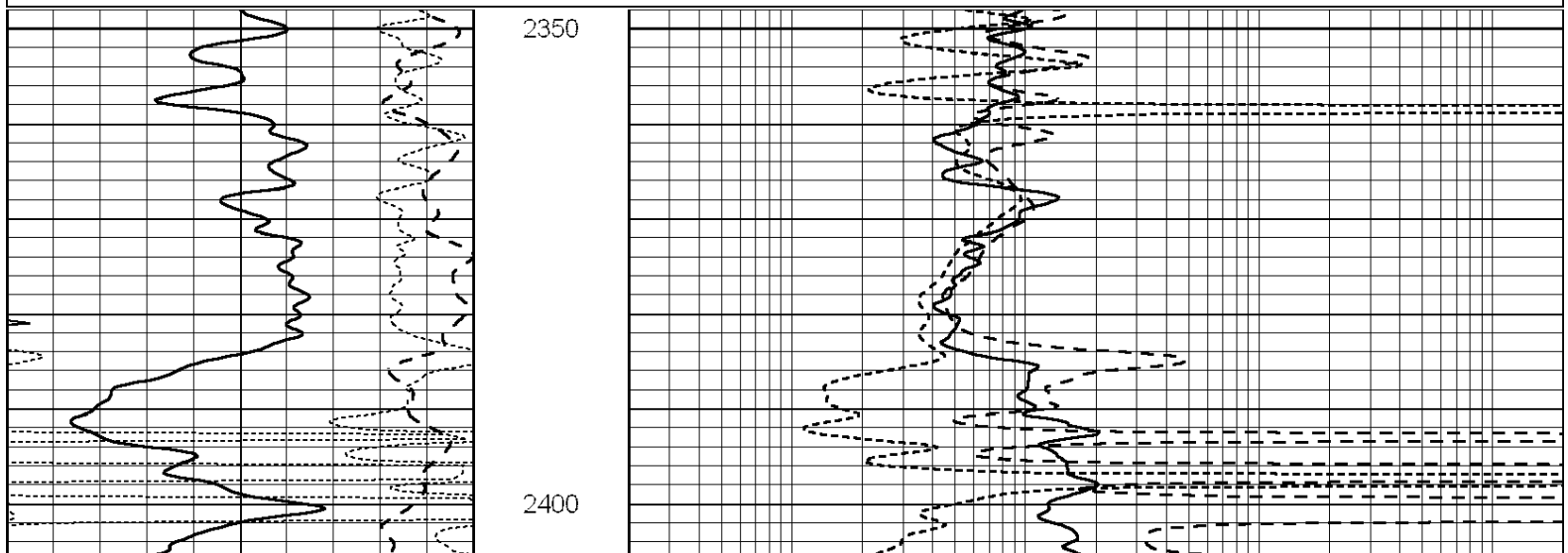


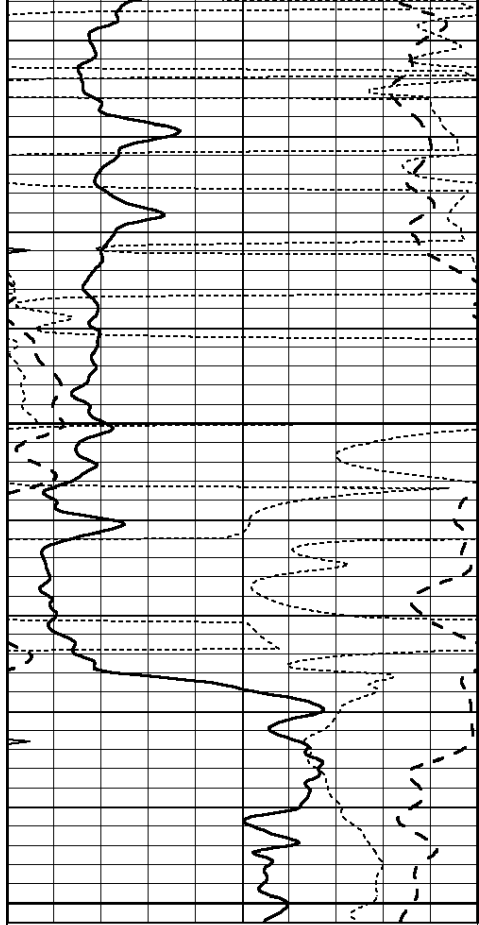
**COMPLETION
& PRODUCTION
SERVICES CO.**

ANHYDRITE

Database File: 011697pe.db
 Dataset Pathname: pass3.20
 Presentation Format: _dil
 Dataset Creation: Sun Oct 27 09:11:50 2013
 Charted by: Depth in Feet scaled 1:240

0	GAMMA RAY (GAPI)	150	0.2	SHALLOW GUARD (Ohm-m)	2000
-100	SP (mV)	100	0.2	DEEP INDUCTION (Ohm-m)	2000
-250	Rxo/Rt	50	0.2	MEDIUM INDUCTION (Ohm-m)	2000
0	MINMK	20			

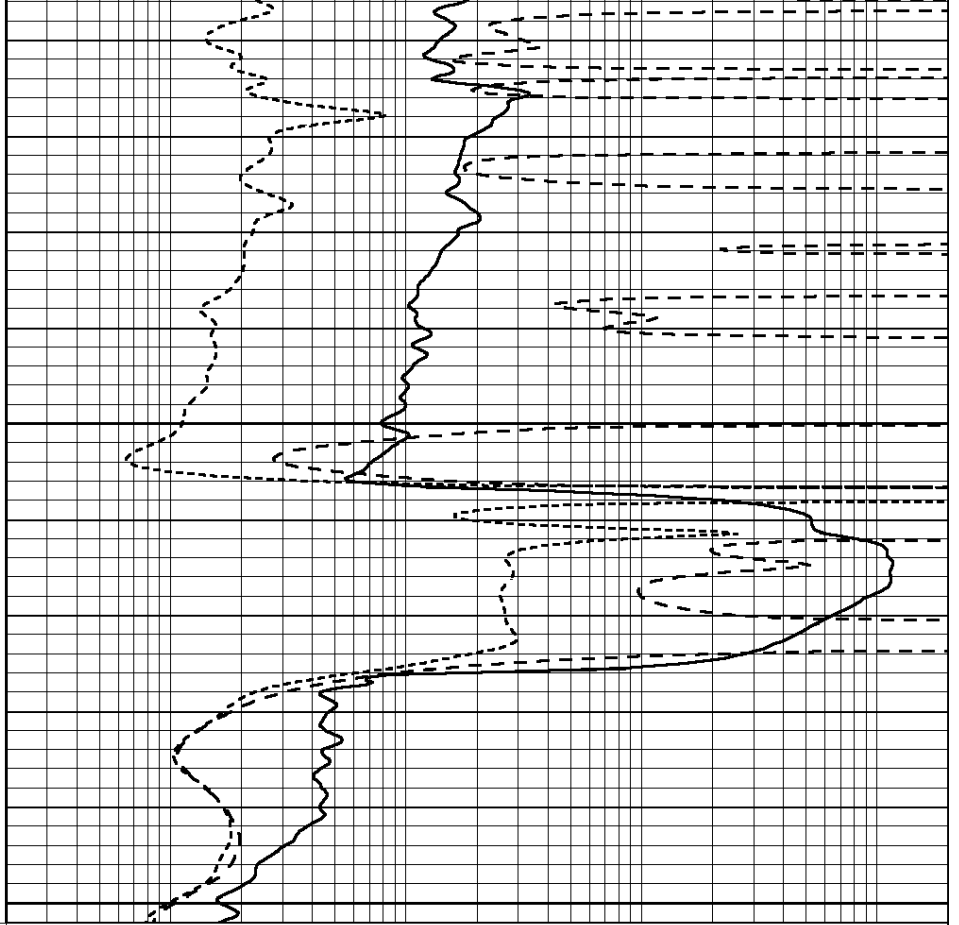




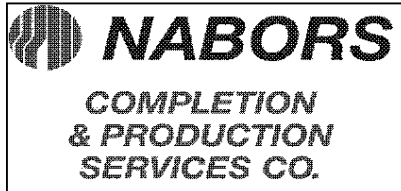
0	GAMMA RAY (GAPI)	150
-100	SP (mV)	100
-250	Rxo/Rt	50
0	MINMK	20

2450

2500



0.2	SHALLOW GUARD (Ohm-m)	2000
0.2	DEEP INDUCTION (Ohm-m)	2000
0.2	MEDIUM INDUCTION (Ohm-m)	2000



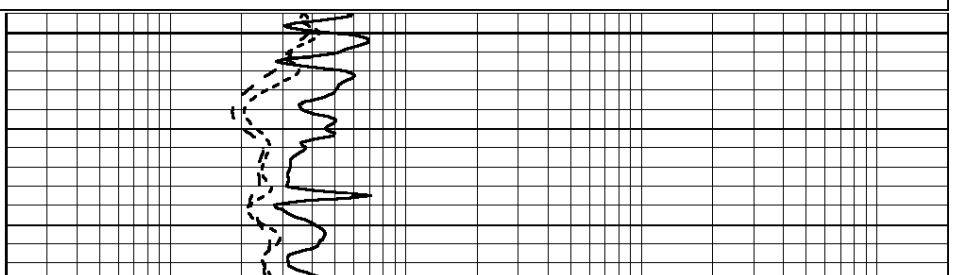
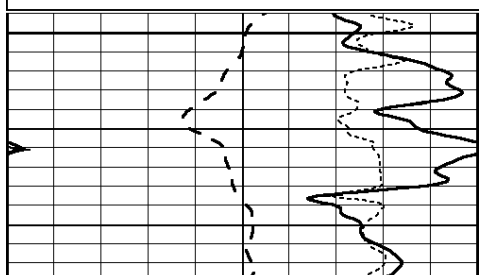
MAIN SECTION

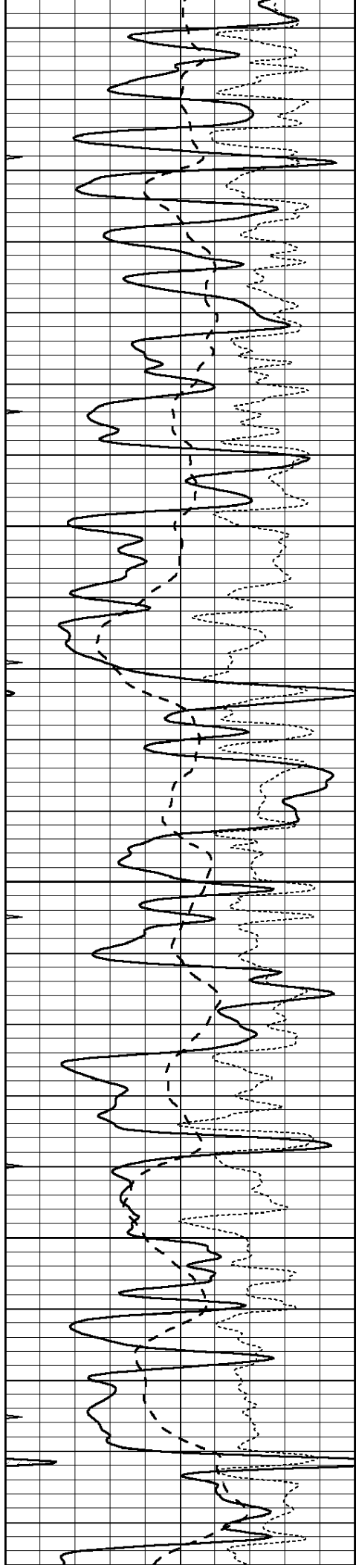
Database File: 011697pe.db
 Dataset Pathname: pass3.19
 Presentation Format: _dil
 Dataset Creation: Sun Oct 27 09:11:33 2013
 Charted by: Depth in Feet scaled 1:240

0	GAMMA RAY (GAPI)	150
-100	SP (mV)	100
-250	Rxo/Rt	50
0	MINMK	20

0.2	SHALLOW GUARD (Ohm-m)	2000
0.2	DEEP INDUCTION (Ohm-m)	2000
0.2	MEDIUM INDUCTION (Ohm-m)	2000

3600



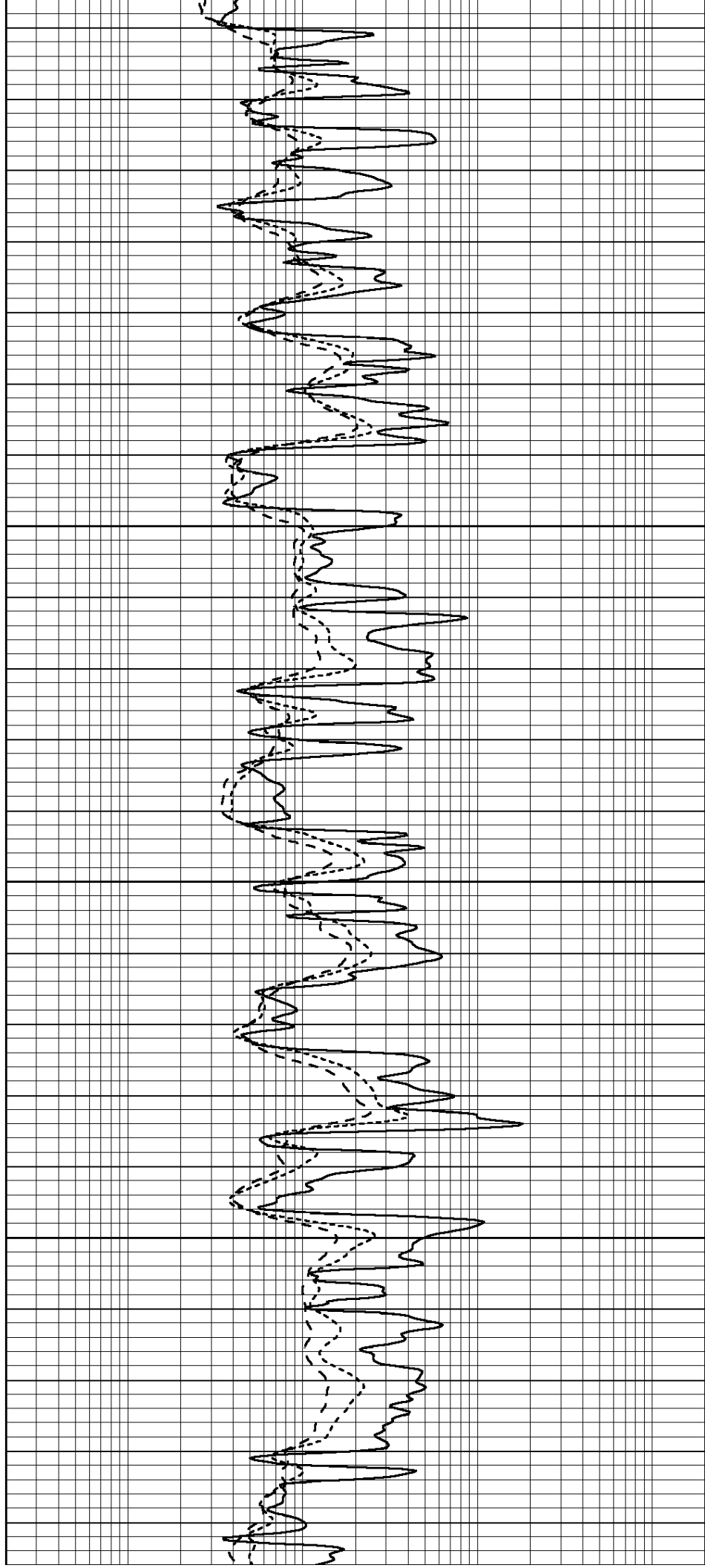


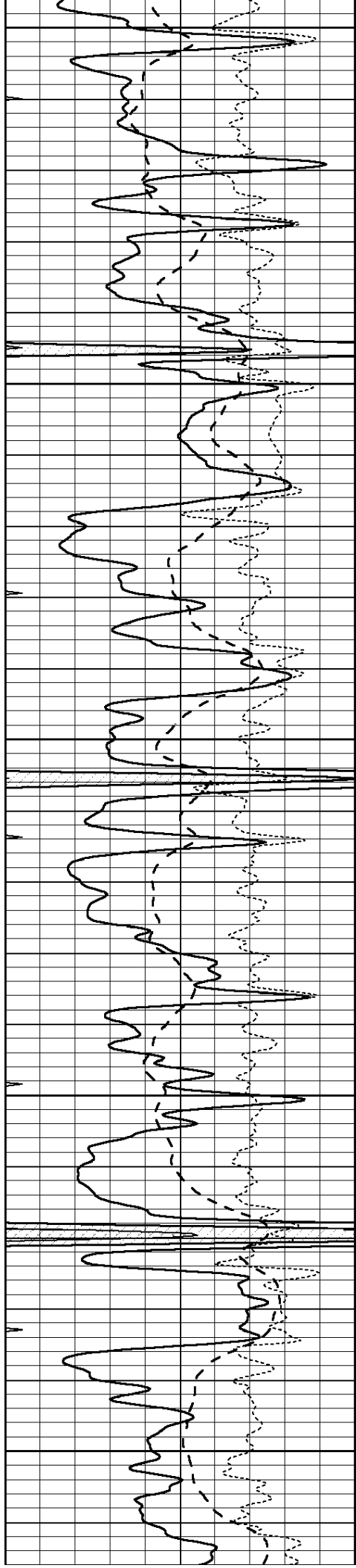
3650

3700

3750

3800





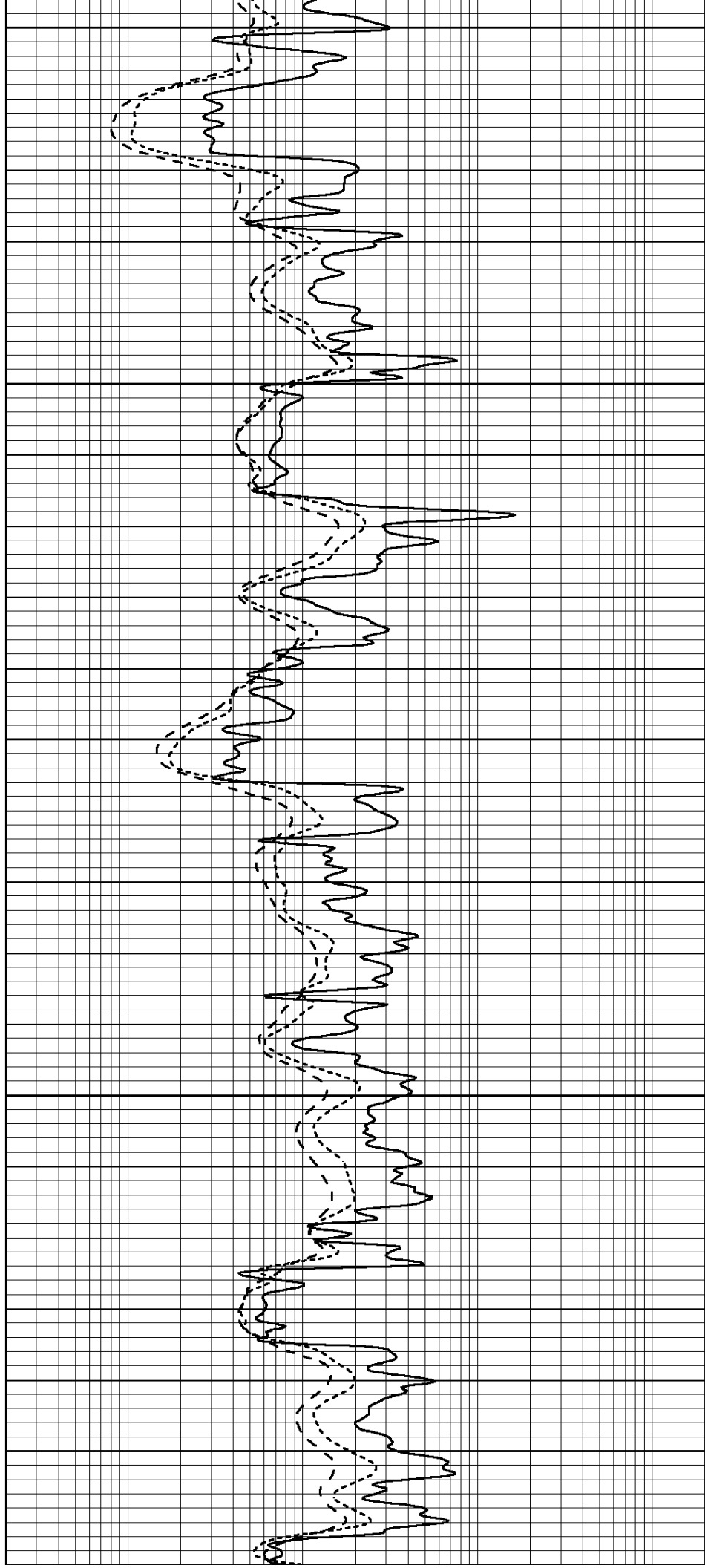
3850

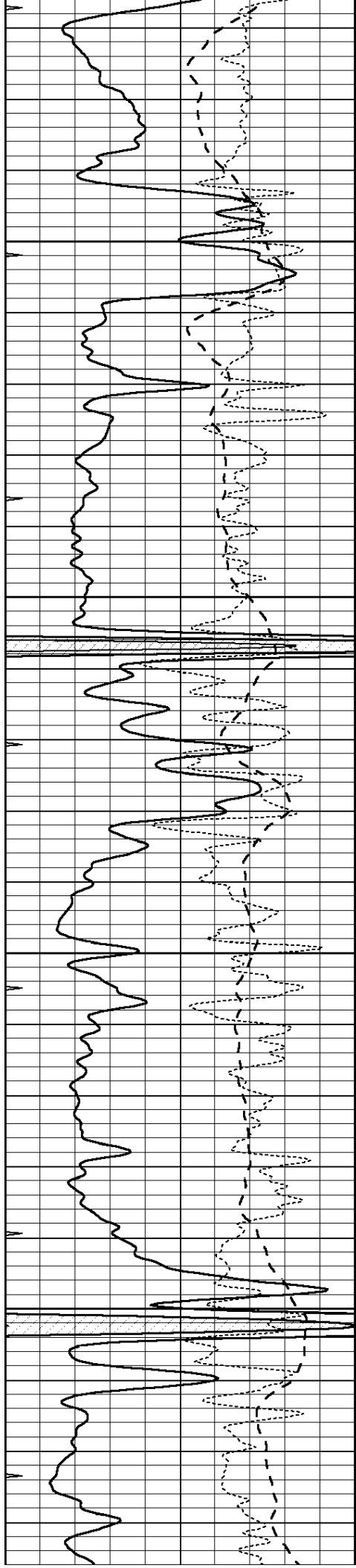
3900

3950

4000

4050



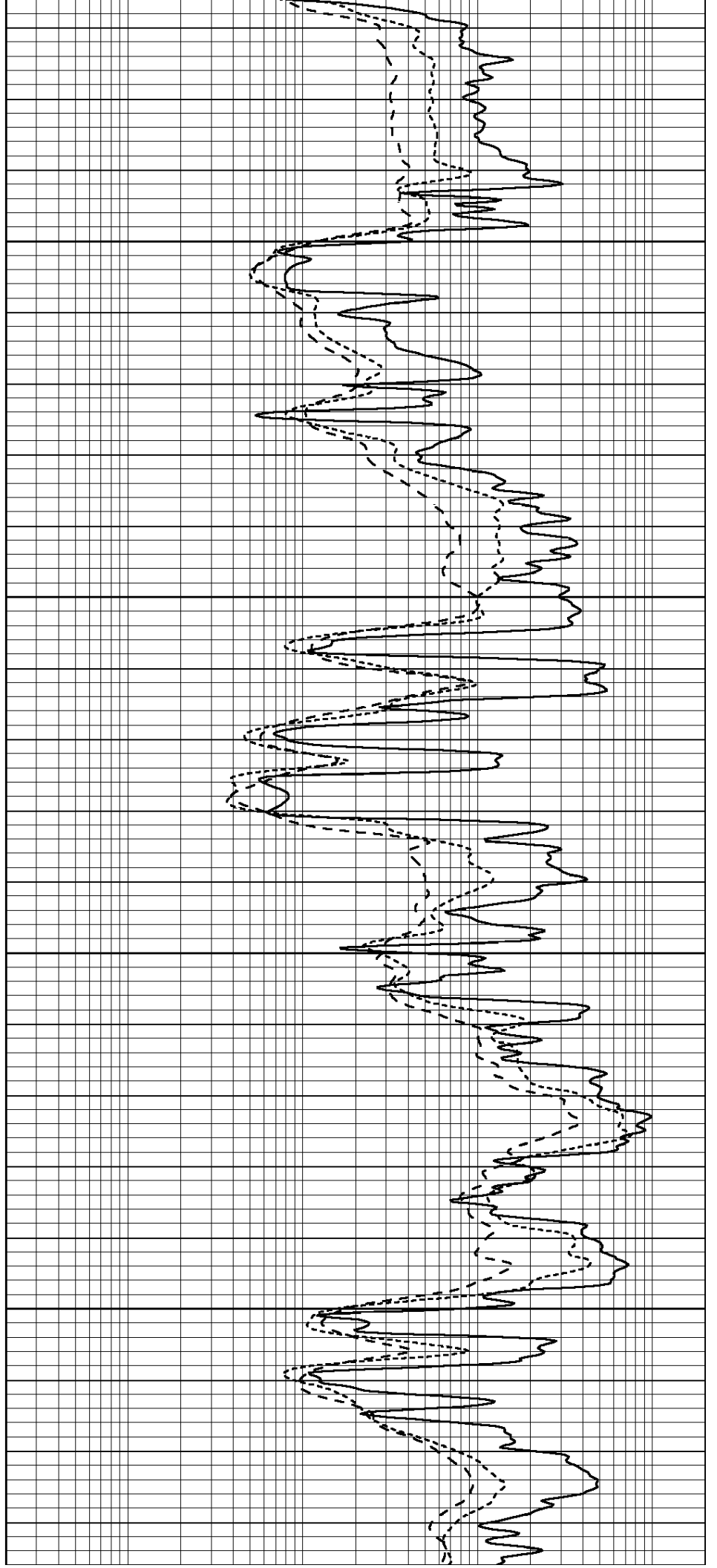


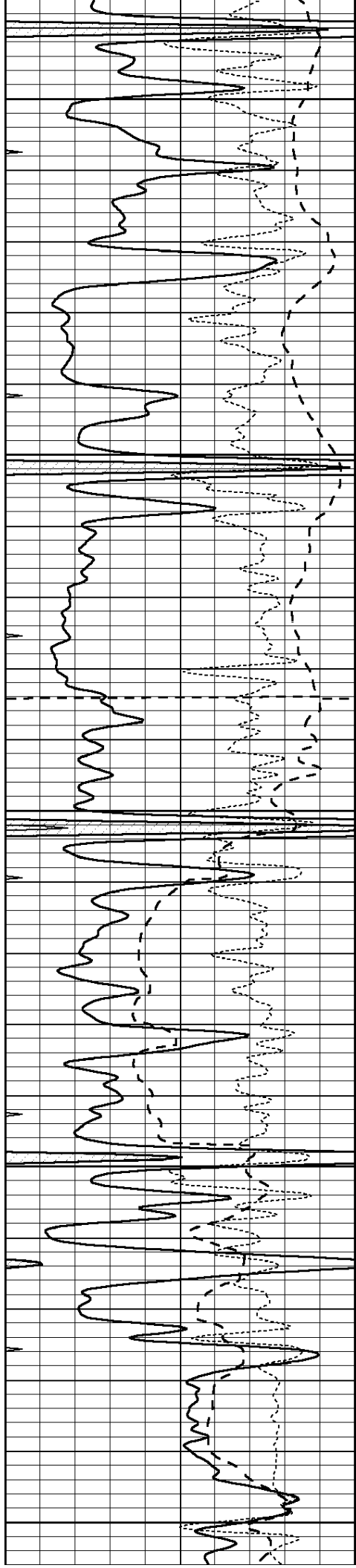
4100

4150

4200

4250





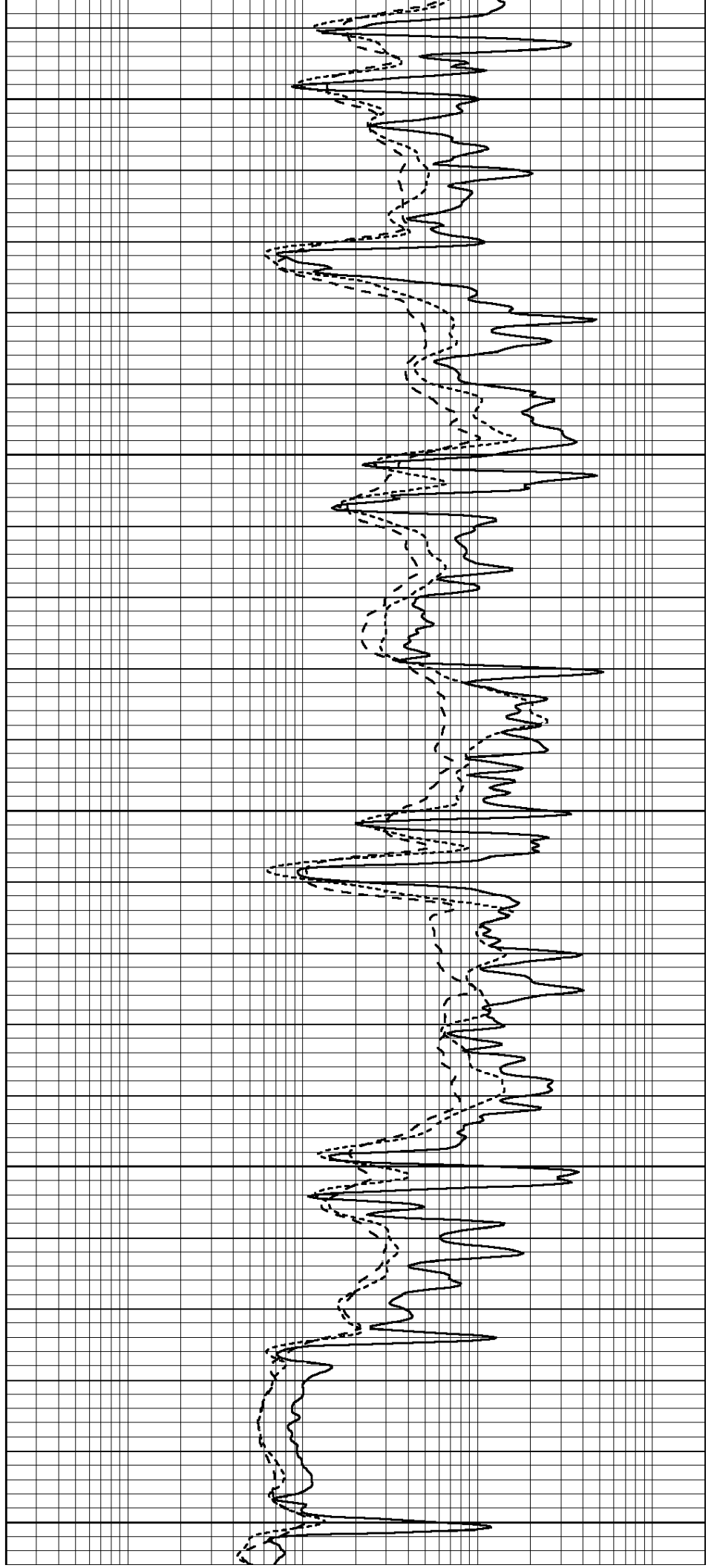
4300

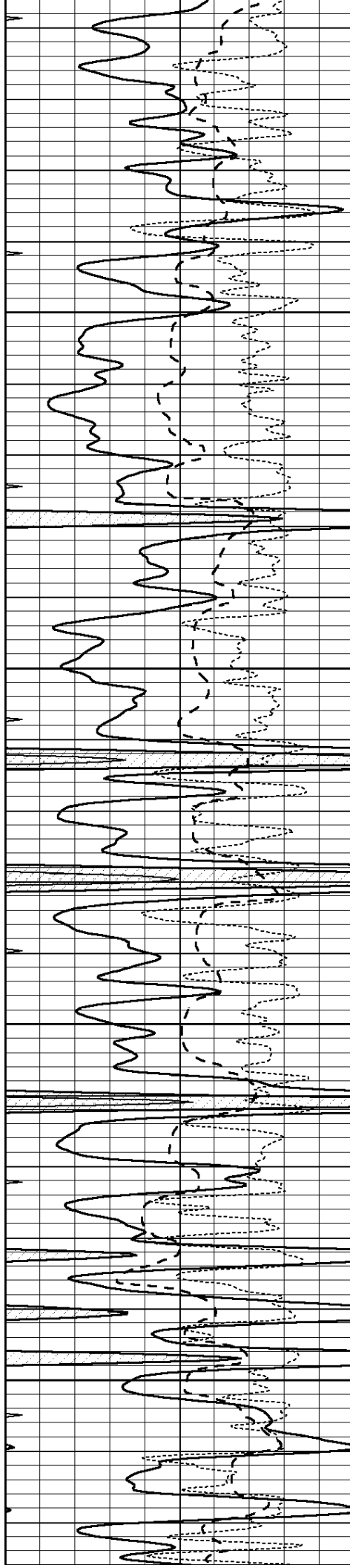
4350

4400

4450

4500



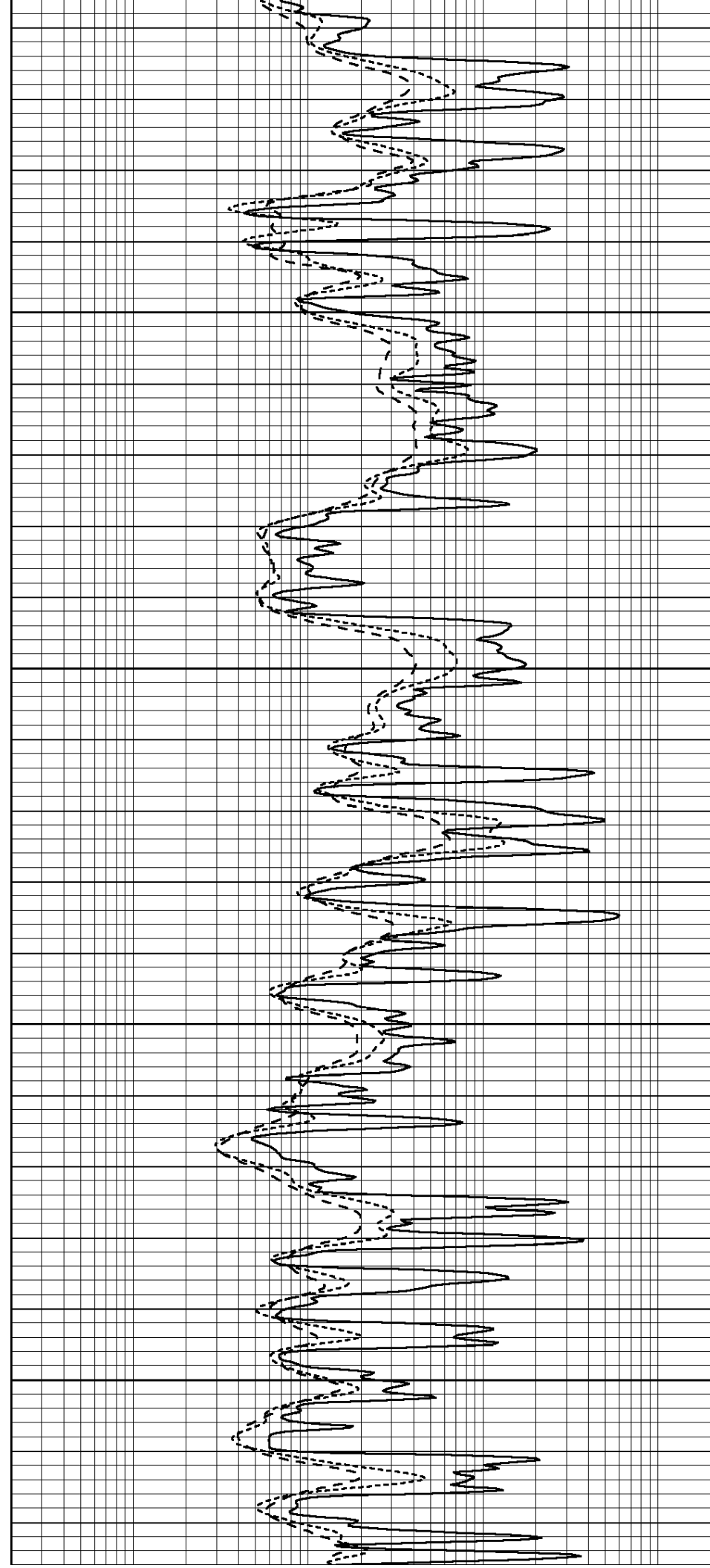


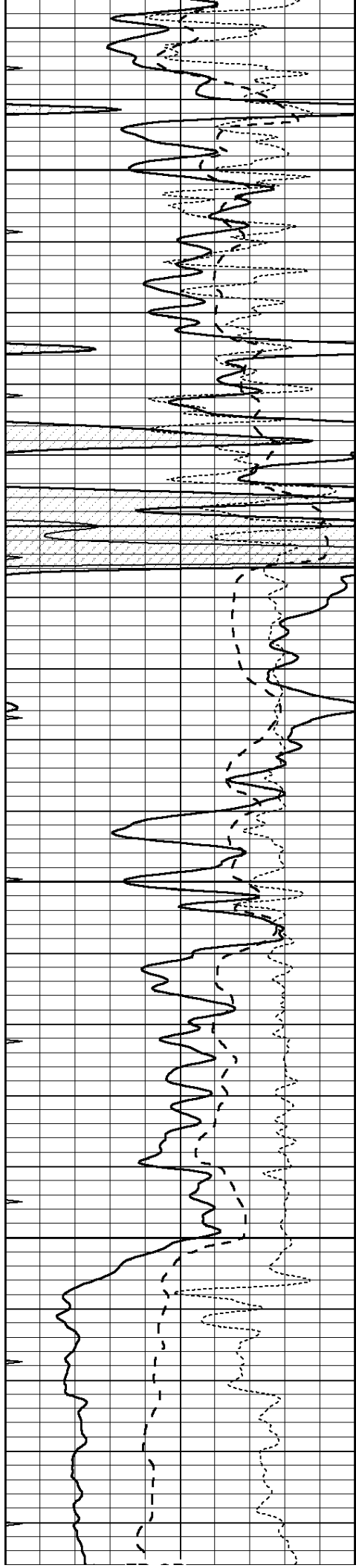
4550

4600

4650

4700



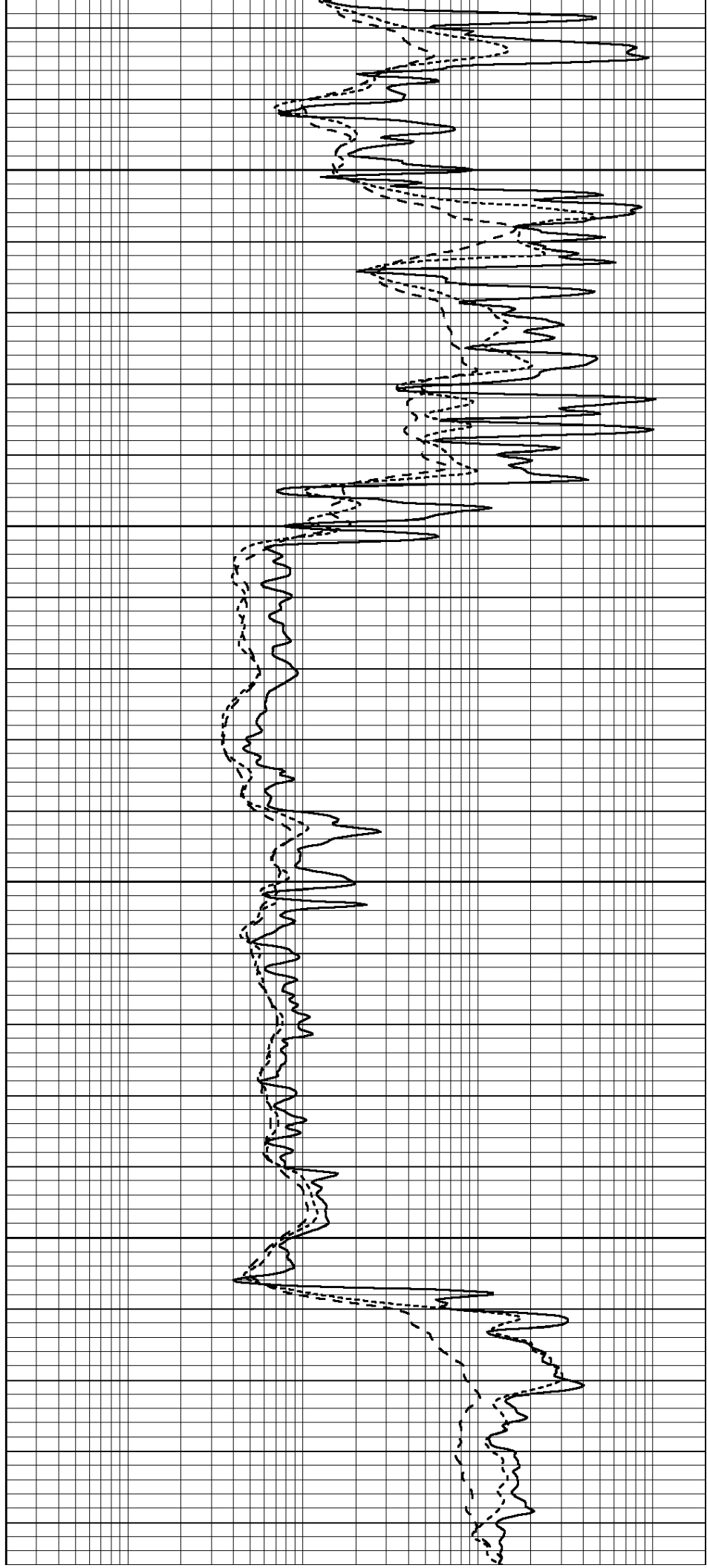


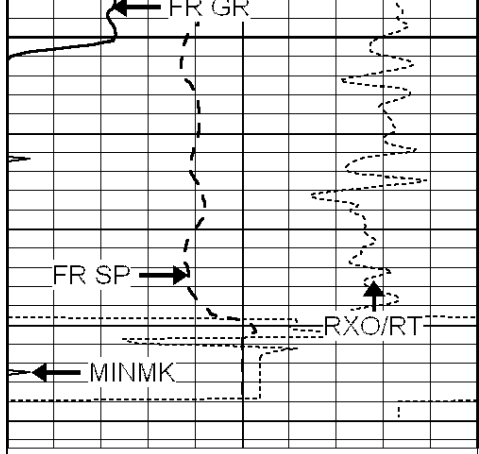
4750

4800

4850

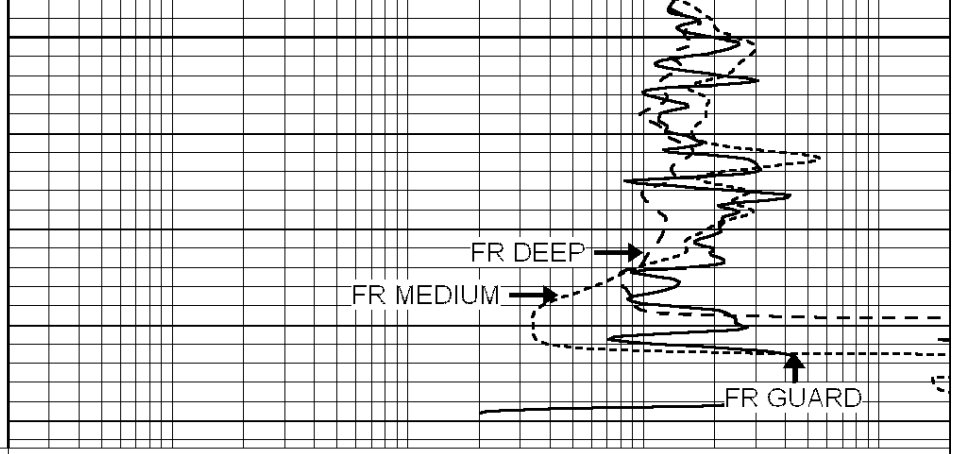
4900





LTD 4985

0	GAMMA RAY (GAPI)	150
-100	SP (mV)	100
-250	Rxo/Rt	50
0	MINMK	20



0.2	SHALLOW GUARD (Ohm-m)	2000
0.2	DEEP INDUCTION (Ohm-m)	2000
0.2	MEDIUM INDUCTION (Ohm-m)	2000

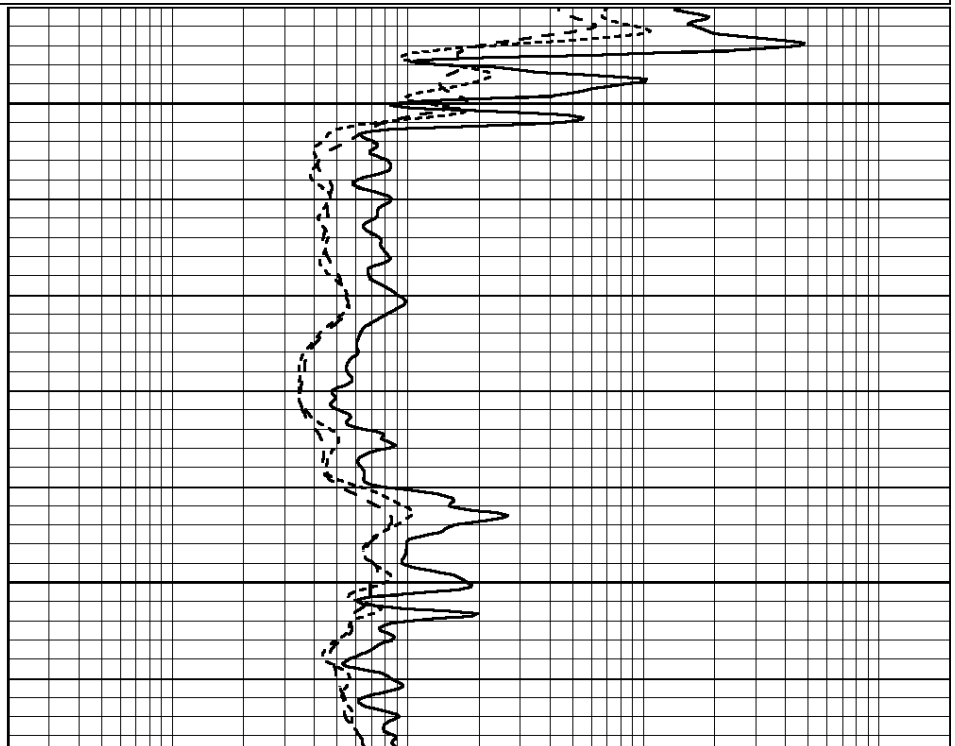
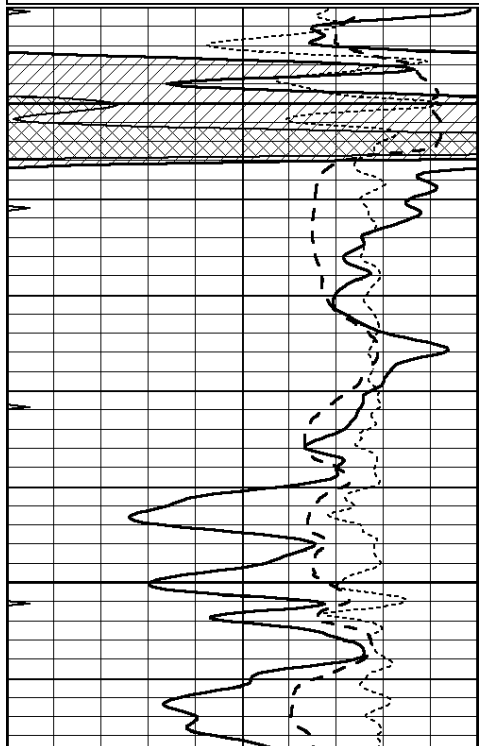


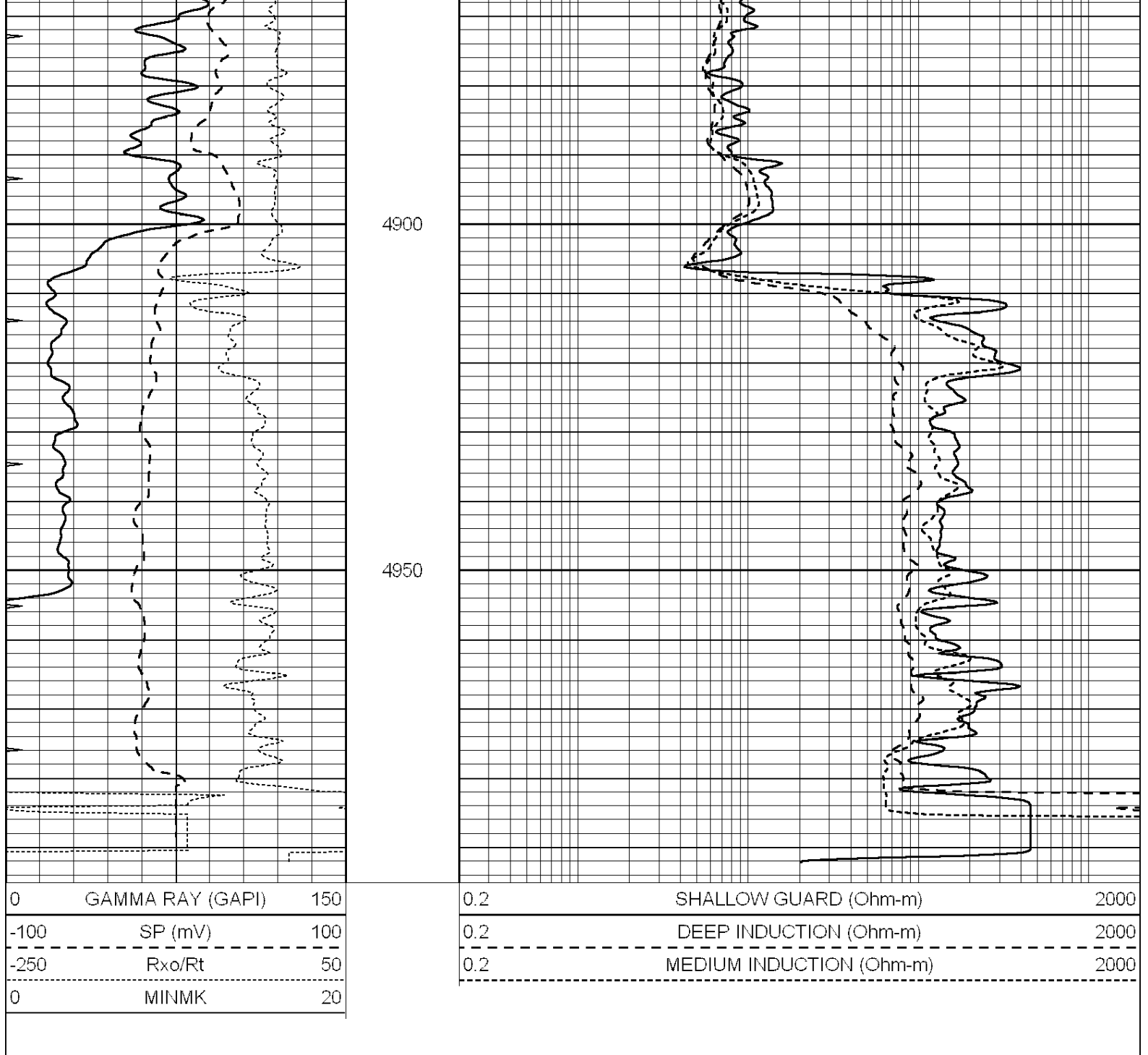
REPEAT SECTION

Database File: 011697pe.db
 Dataset Pathname: pass2.6
 Presentation Format: dil
 Dataset Creation: Sun Oct 27 09:30:22 2013
 Charted by: Depth in Feet scaled 1:240

0	GAMMA RAY (GAPI)	150
-100	SP (mV)	100
-250	Rxo/Rt	50
0	MINMK	20

0.2	SHALLOW GUARD (Ohm-m)	2000
0.2	DEEP INDUCTION (Ohm-m)	2000
0.2	MEDIUM INDUCTION (Ohm-m)	2000





Calibration Report

Database File: 011697pe.db
 Dataset Pathname: pass3.19
 Dataset Creation: Sun Oct 27 09:11:33 2013

Dual Induction Calibration Report

Serial-Model: PROBE9-DILG
 Surface Cal Performed: Thu Oct 24 00:58:04 2013
 Downhole Cal Performed: Mon Jul 28 12:02:56 2008
 After Survey Verification Performed: Mon Jul 28 12:02:56 2008

Surface Calibration

Loop:	Readings			References			Results	
	Air	Loop		Air	Loop		m	b
Deep	-0.014	0.629	V	0.000	400.000	mmho/m	650.000	-10.000
Medium	0.039	0.728	V	0.000	464.000	mmho/m	640.000	-16.000

Internal:	Zero	Cal		Zero	Cal		m	b
Deep	0.011	0.610	V	0.000	400.000	mmho/m	667.135	-7.256
Medium	0.005	0.712	V	0.000	464.000	mmho/m	655.677	-3.102

Downhole Calibration								
	Readings			References			Results	
	Zero	Cal		Zero	Cal		m'	b'
Deep	0.000	0.000	mmho/m	14.508	388.384	mmho/m	1.000	0.000
Medium	0.000	0.000	mmho/m	166.367	504.400	mmho/m	1.000	0.000
LL3		7.500	V		1400.000	Ohm-m		
		0.000	V		20.000	Ohm-m		
		-7.200	V		4000.000	mmho-m		

After Survey Verification								
	Readings			Targets			Results	
	Zero	Cal		Zero	Cal		m'	b'
Deep	0.000	0.000	mmho/m	0.000	0.000	mmho/m	0.000	0.000
Medium	0.000	0.000	mmho/m	0.000	0.000	mmho/m	0.000	0.000
LL3		1.000	Ohm-m		1.000	Ohm-m		
		0.000	Ohm-m		0.000	Ohm-m		
		1.000	mmho-m		1.000	mmho-m		

Litho Density Calibration Report
 Serial: 004N Model: PRB

Master Calibration		Performed Mon Jun 03 09:36:56 2013				
	Background	Magnesium	Aluminum	Sandstone		
Window 1	1417.6	10391.4	3464.6	11537.5	cps	
Window 2	1295.0	8959.7	3050.1	9816.4	cps	
Window 3	1105.1	5464.2	2051.0	5838.8	cps	
Window 4	315.0	317.7	312.9	319.8	cps	
Long Space	0.0	7664.6	1755.0	8521.3	cps	
Short Space	1.8	1582.4	1040.8	1699.4	cps	
Rho		1.7100	2.5900	1.3800	g/cc	
Pe		0.0000	2.5700	1.5500		
Rib Angle	: 44.1	Rib Slope	: 0.970	Density/Spine Ratio	: 0.574	
Spine Angle	: 74.1	Spine Slope	: 3.519	Spine Intercept	: -17.0	

Before Survey Verification		Performed Wed Dec 31 18:00:00 1969				
	Background	Magnesium	Aluminum	Sandstone		
Window 1	0.0	0.0	0.0	0.0	cps	
Window 2	0.0	0.0	0.0	0.0	cps	
Window 3	0.0	0.0	0.0	0.0	cps	
Window 4	0.0	0.0	0.0	0.0	cps	
Long Space	0.0	0.0	0.0	0.0	cps	
Short Space	0.0	0.0	0.0	0.0	cps	
Measured Rho		0.0000	0.0000	0.0000	g/cc	
Measured Correction		0.0000	0.0000	0.0000	g/cc	
Measured Pe			0.0000	0.0000		

After Survey Verification		Performed Wed Dec 31 18:00:00 1969				
	Background	Magnesium	Aluminum	Sandstone		
Window 1	0.0	0.0	0.0	0.0	cps	
Window 2	0.0	0.0	0.0	0.0	cps	
Window 3	0.0	0.0	0.0	0.0	cps	

Window 4	0.0	0.0	0.0	0.0	cps
Long Space	0.0	0.0	0.0	0.0	cps
Short Space	0.0	0.0	0.0	0.0	cps
Measured Rho		0.0000	0.0000	0.0000	g/cc
Measured Correction		0.0000	0.0000	0.0000	g/cc
Measured Pe			0.0000	0.0000	

Compensated Neutron Calibration Report

Serial Number: 070808
Tool Model: Probe

PRE-SURVEY VERIFICATION

Detector	Readings	Measured	Target
Short Space	cps		
Long Space	cps	pu	pu

POST-SURVEY VERIFICATION

Detector	Readings	Measured	Target
Short Space	cps		
Long Space	cps	pu	pu

Gamma Ray Calibration Report

Serial Number: 070559
Tool Model: OPEN_GR
Performed: Mon Oct 21 18:53:38 2013

Calibrator Value: 1.0 GAPI
Background Reading: 0.0 cps
Calibrator Reading: 1.0 cps
Sensitivity: 0.3000 GAPI/cps