



**COMPLETION
& PRODUCTION
SERVICES CO.**

**SONIC
LOG**

Company EAGLE CREEK CORPORATION
Well SIMONS FARMS #1-12
Field WILDCAT
County WICHITA
State KANSAS

Company EAGLE CREEK CORPORATION
Well SIMONS FARMS #1-12
Field WILDCAT
County WICHITA State KANSAS

Location: API # : 15-203-20236-0000
1977' FSL & 1328' FWL
SEC 12 TWP 17S RGE 35W
Permanent Datum GROUND LEVEL Elevation 3168
Log Measured From KELLY BUSHING 8' A.G.L.
Drilling Measured From KELLY BUSHING
Other Services
CDL/CNL/PE
DIL/MEL
Elevation
K.B. 3176
D.F. 3174
G.L. 3168

Date	10/27/13
Run Number	TWO
Depth Driller	4980
Depth Logger	4985
Bottom Logged Interval	4973
Top Log Interval	200
Casing Driller	8 5/8"@265'
Casing Logger	265
Bit Size	7 7/8"
Type Fluid in Hole	CHEMICAL MUD
Density / Viscosity	9.0/58
pH / Fluid Loss	10.5/10.4
Source of Sample	FLOWLINE
Rim @ Meas. Temp	.500@80F
Rmf @ Meas. Temp	.375@80F
Rmc @ Meas. Temp	.600@80F
Source of Rmf / Rmc	MEASUREMENT
Rim @ BHT	.320@125F
Time Circulation Stopped	4.5 HOURS
Time Logger on Bottom	6:15 A.M.
Maximum Recorded Temperature	125F
Equipment Number	4854
Location	HAYS, KANSAS
Recorded By	JEFF LUEBBERS
Witnessed By	DAVE CALLEWAERT

<<< Fold Here >>>

All interpretations are opinions based on inferences from electrical or other measurements and we cannot and do not guarantee the accuracy or correctness of any interpretation, and we shall not, except in the case of gross or willful negligence on our part, be liable or responsible for any loss, costs, damages, or expenses incurred or sustained by anyone resulting from any interpretation made by any of our officers, agents or employees. These interpretations are also subject to our general terms and conditions set out in our current Price Schedule.

Comments

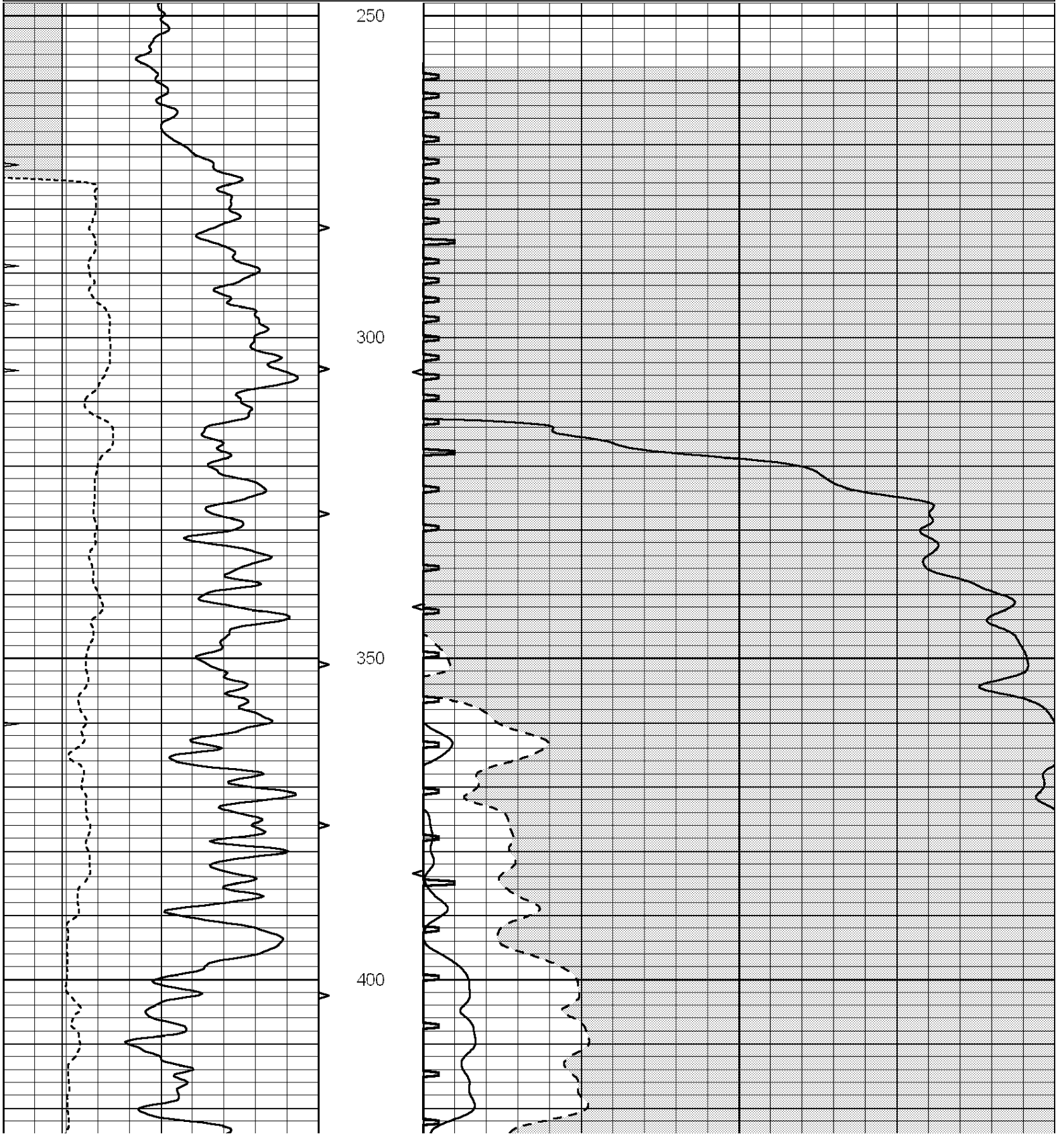
THANK YOU FOR USING "NABORS" HAYS, KANSAS (785) 628-6395
DIRECTIONS
SCOTT CITY, KS., 12W. ON HWY 96 TO (SCOTT/WICHITA COUNTY LINE), 6N., 1W., 1 1/2N., E. INTO

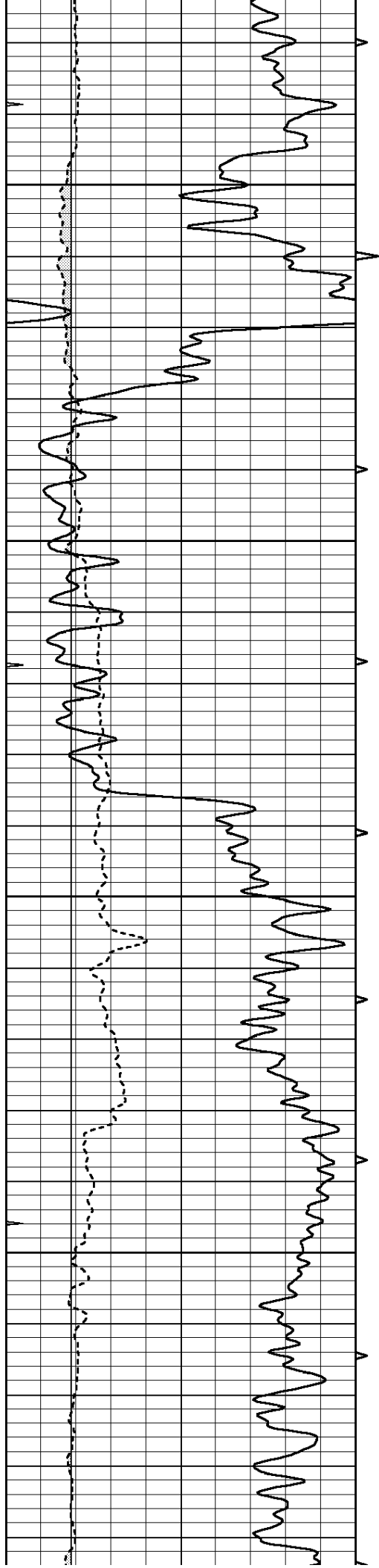


MAIN SECTION

Database File: 011697pe.db
 Dataset Pathname: pass6.5
 Presentation Format: slt
 Dataset Creation: Sun Oct 27 10:41:35 2013
 Charted by: Depth in Feet scaled 1:240

0	GAMMA RAY (GAPI)	150	ABHV	140	DELTA TIME (usec/ft)	40
6	CALIPER (in)	16	10 (ft3) 0	30	SONIC POROSITY (pu)	-10
0	MINMK	20	TBHV	0	ITT (msec)	20
			0 (ft3) 10			



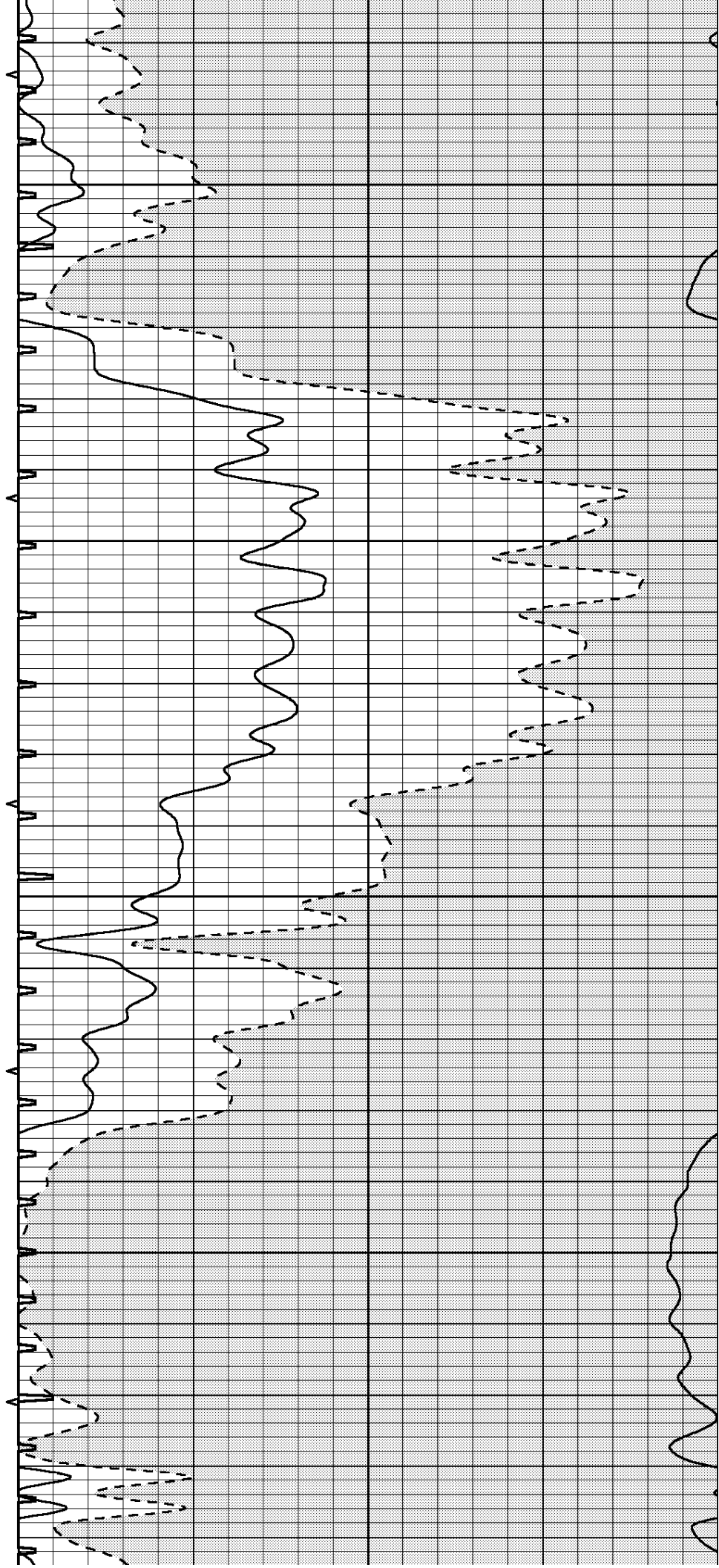


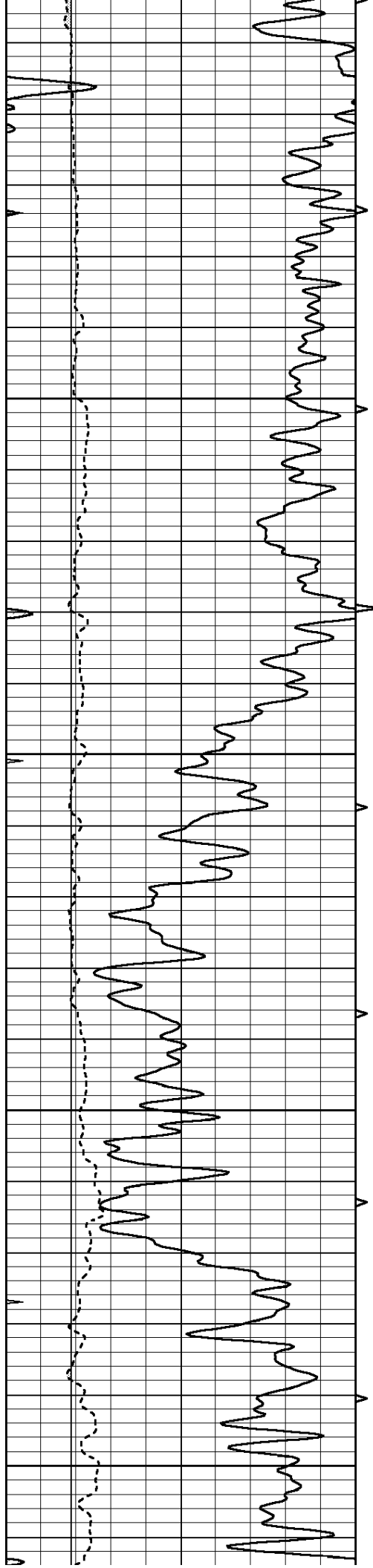
450

500

550

600





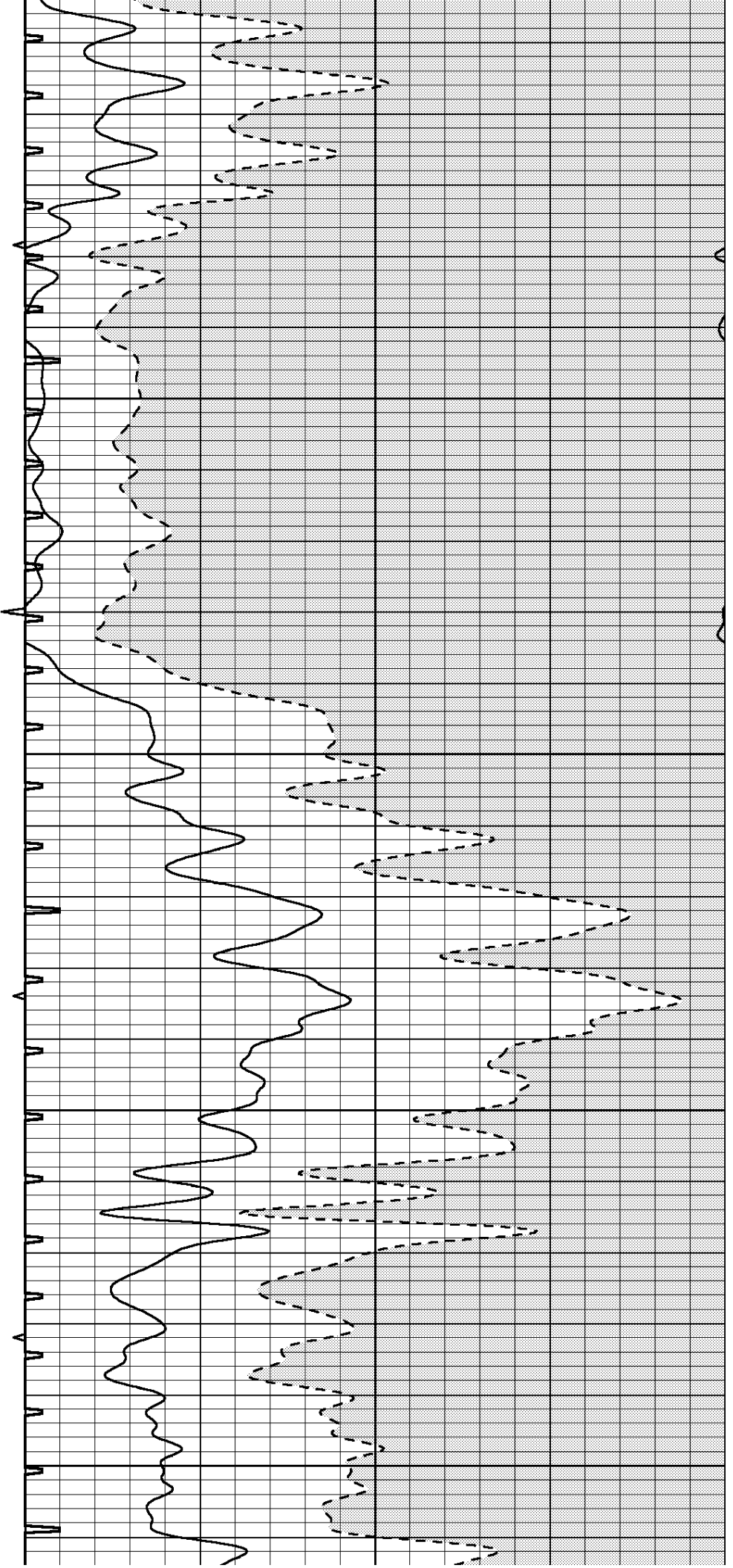
650

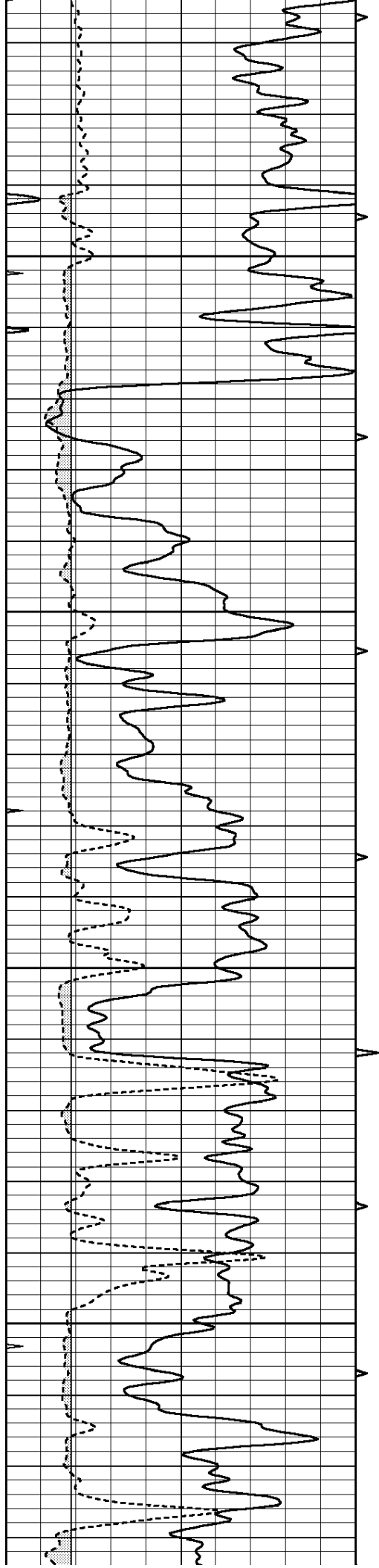
700

750

800

850



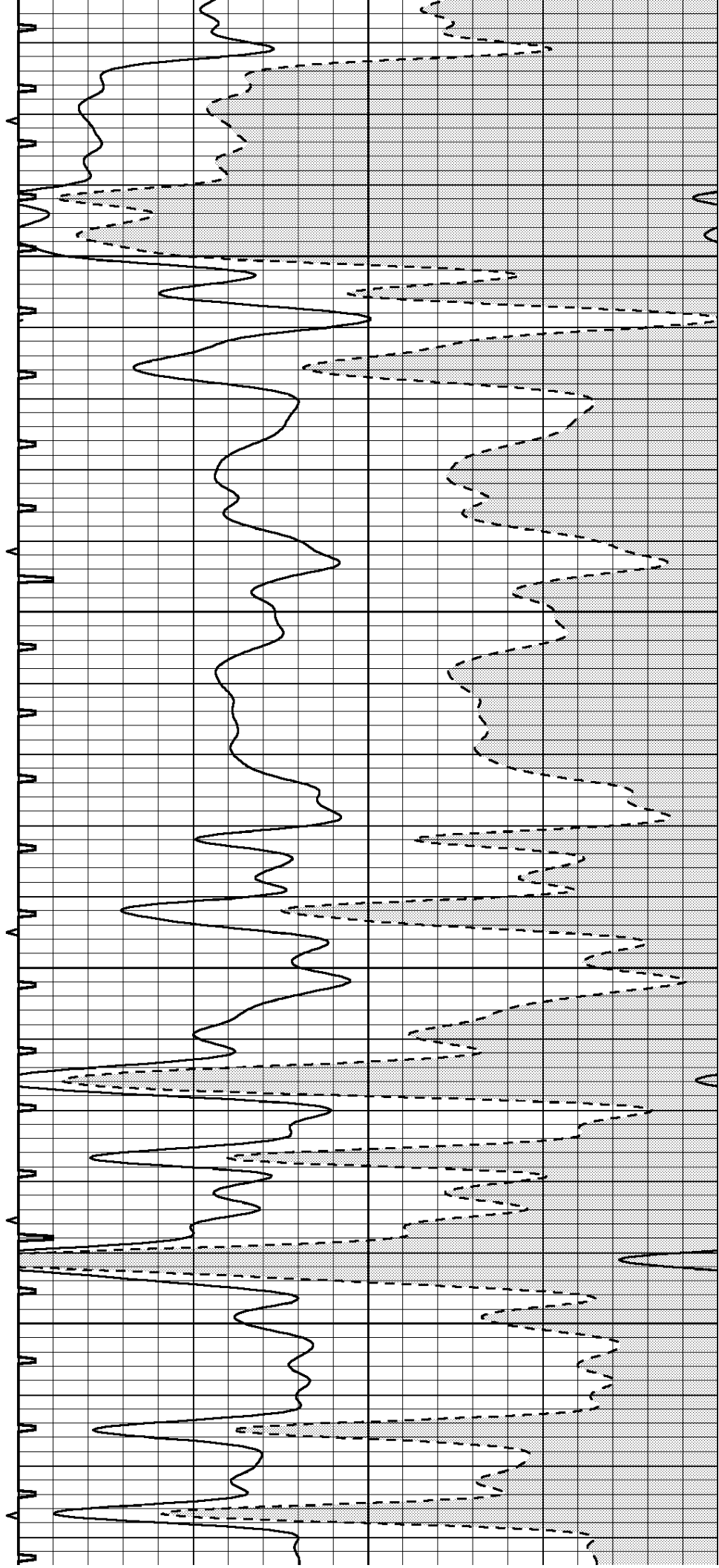


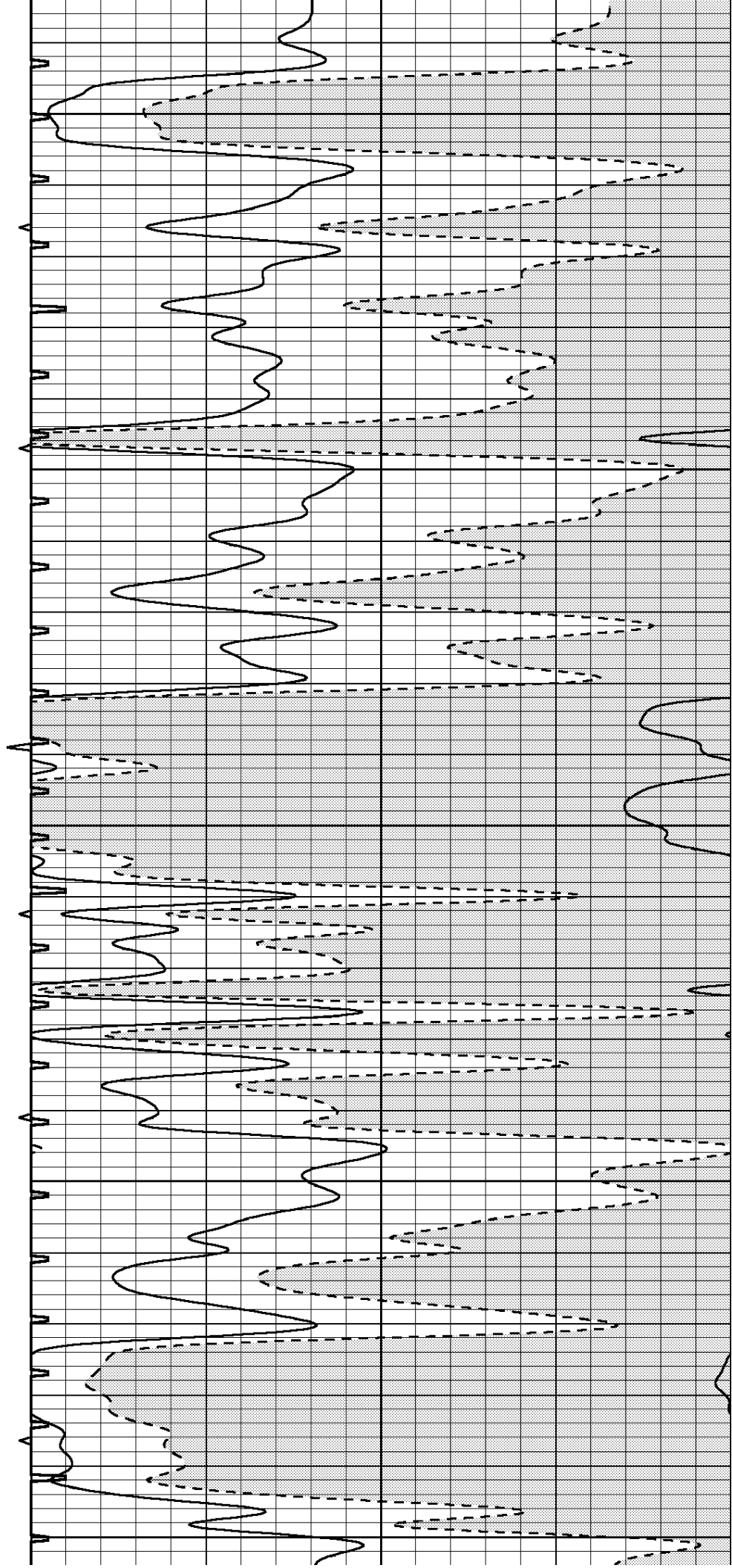
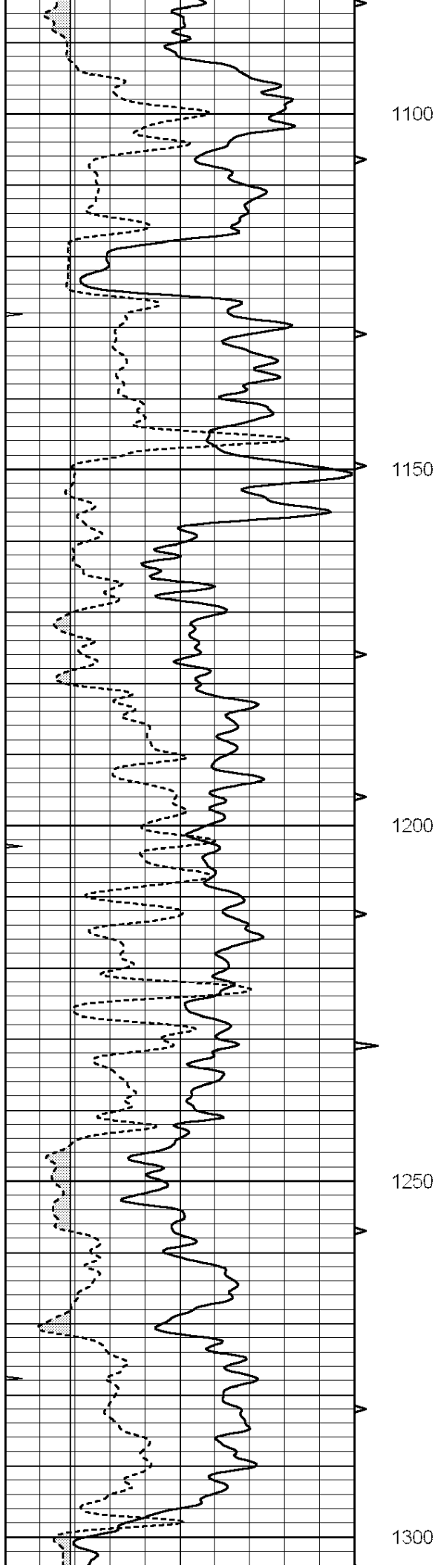
900

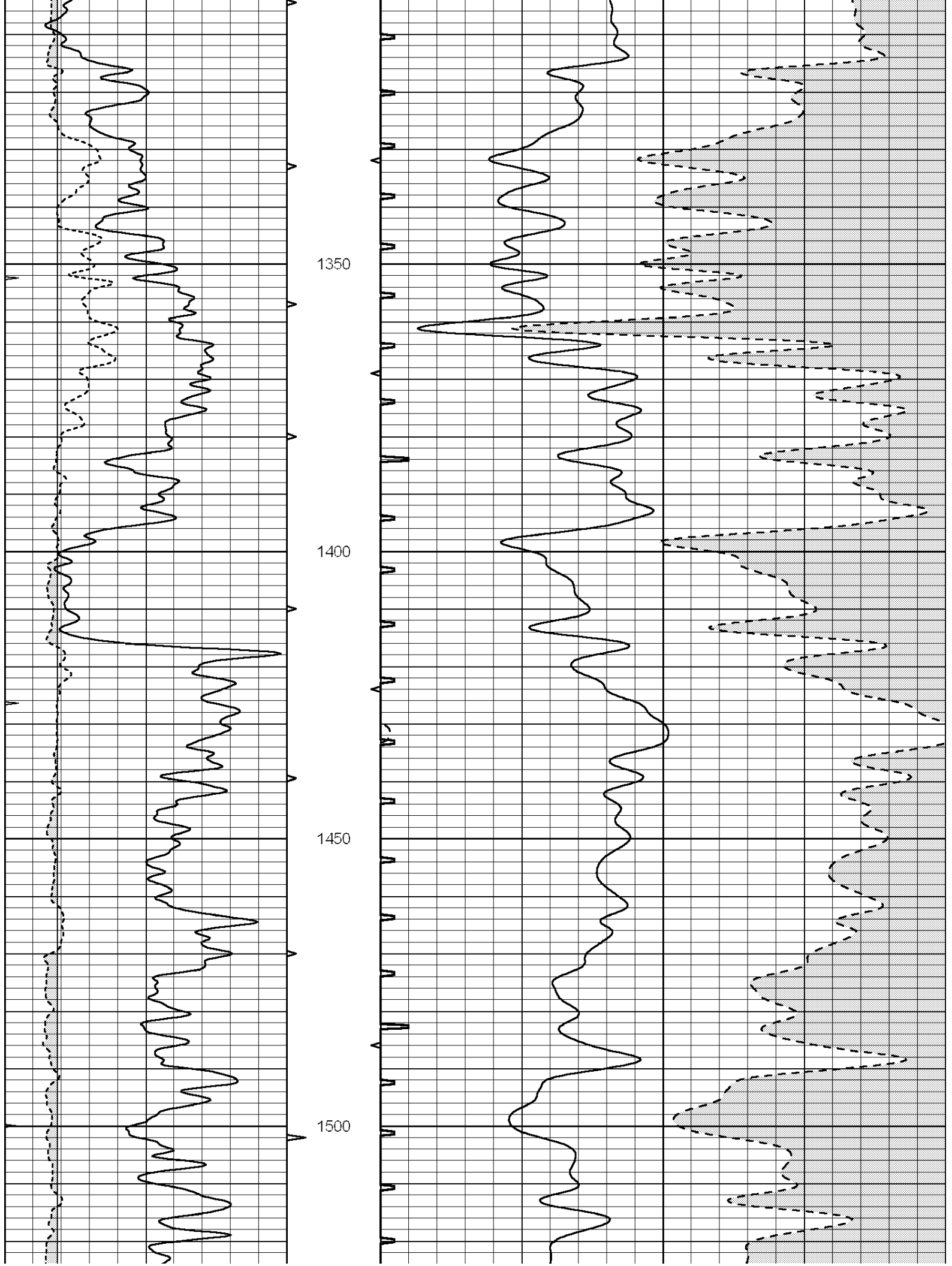
950

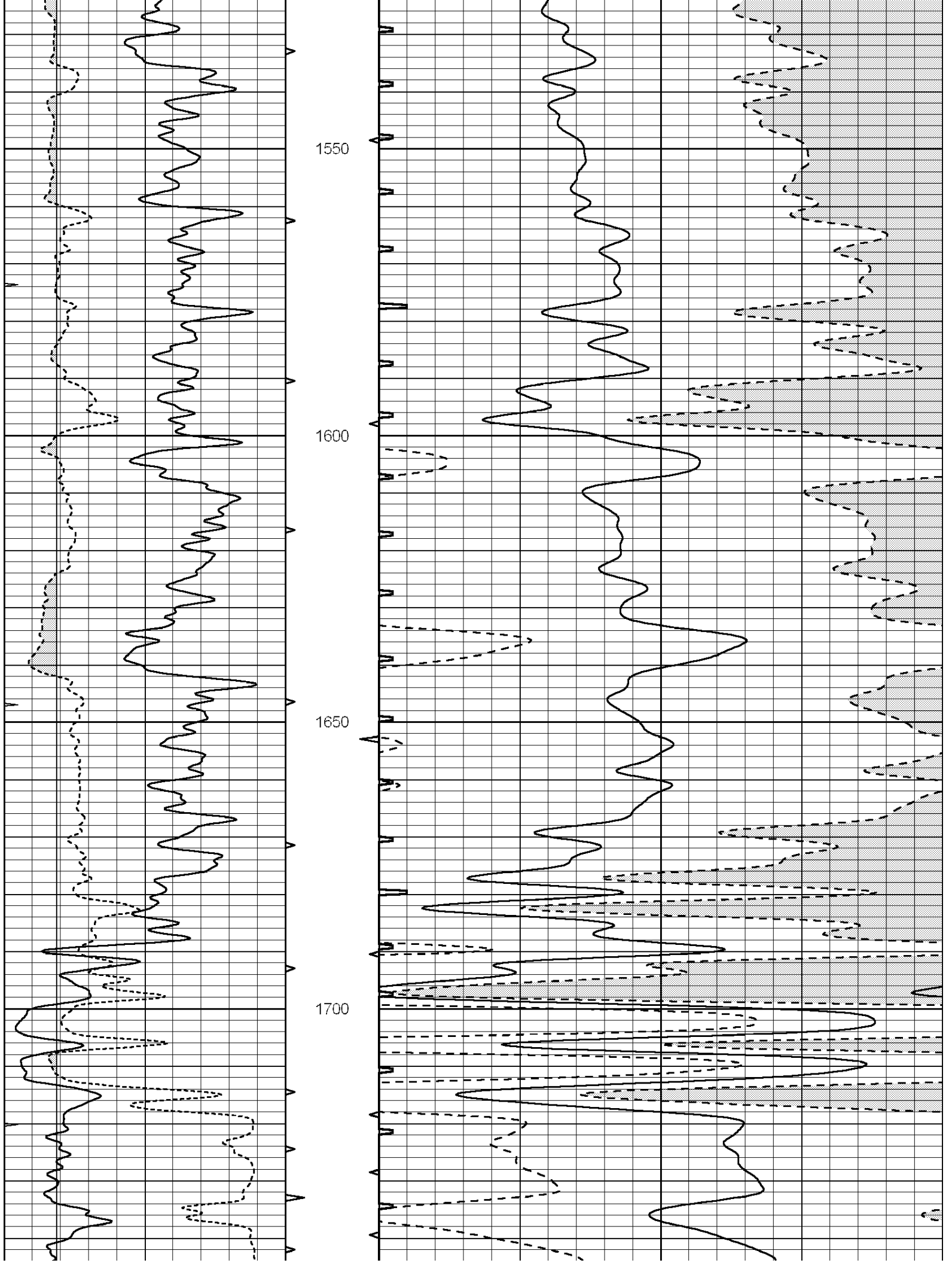
1000

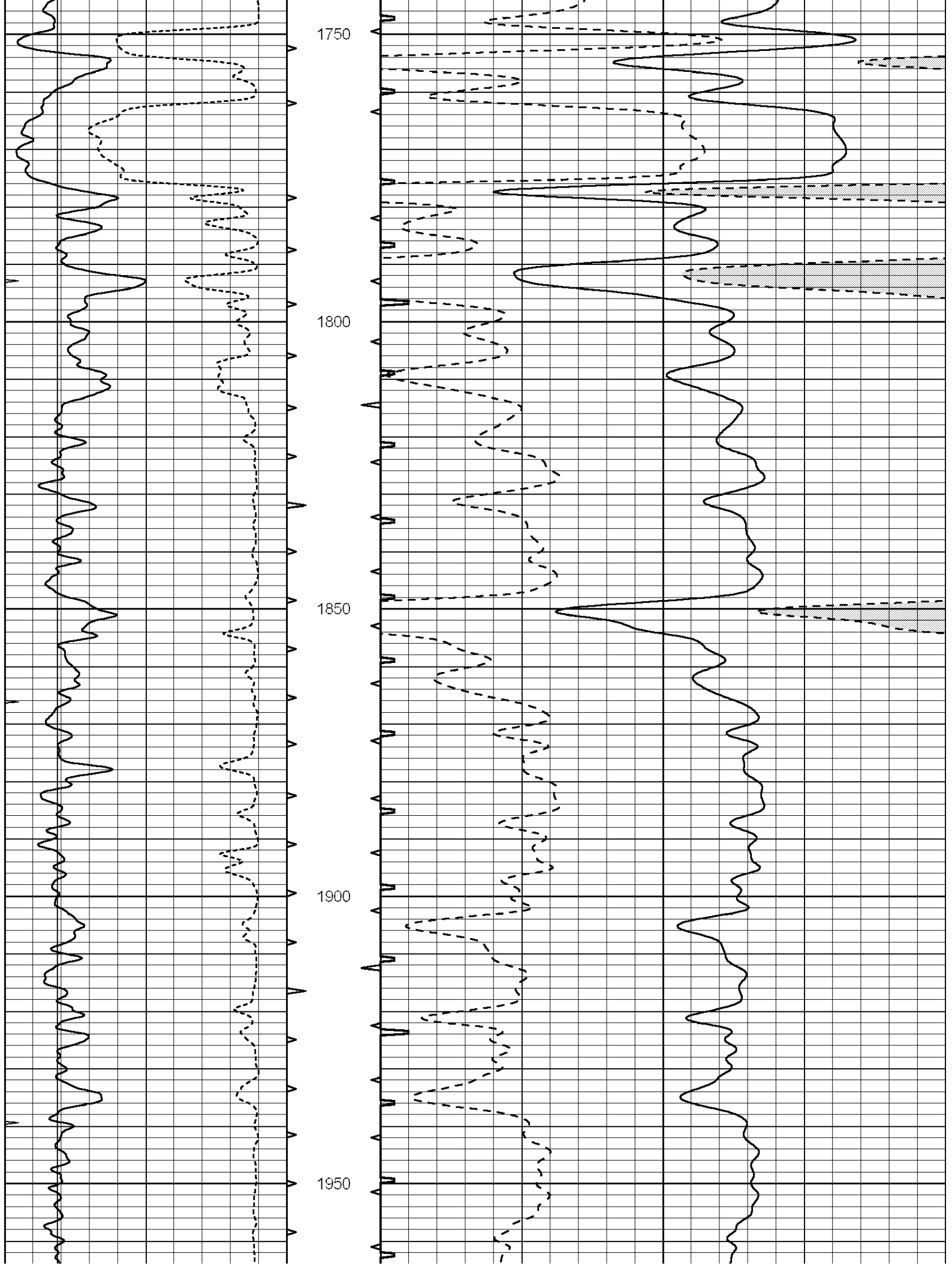
1050

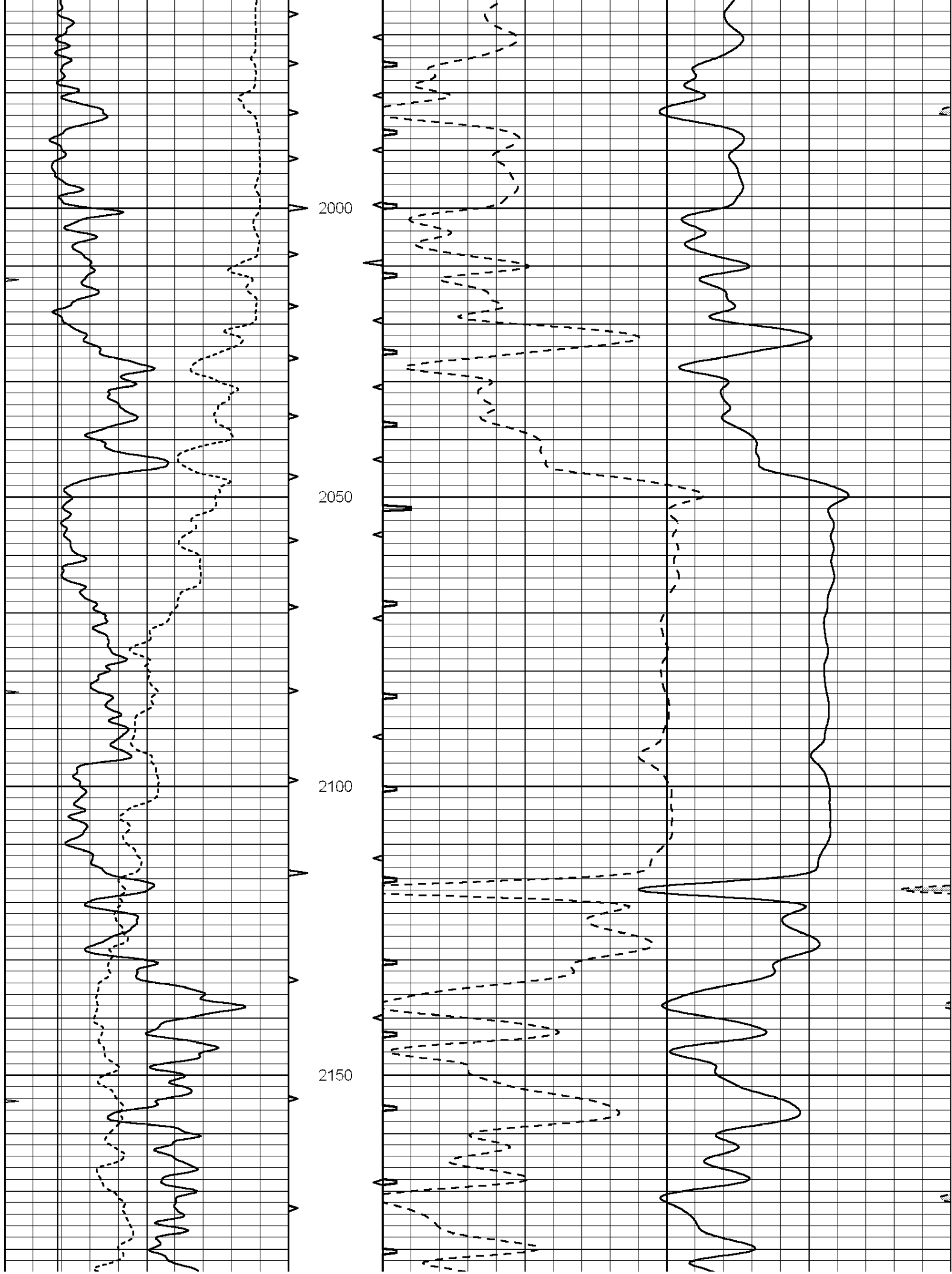


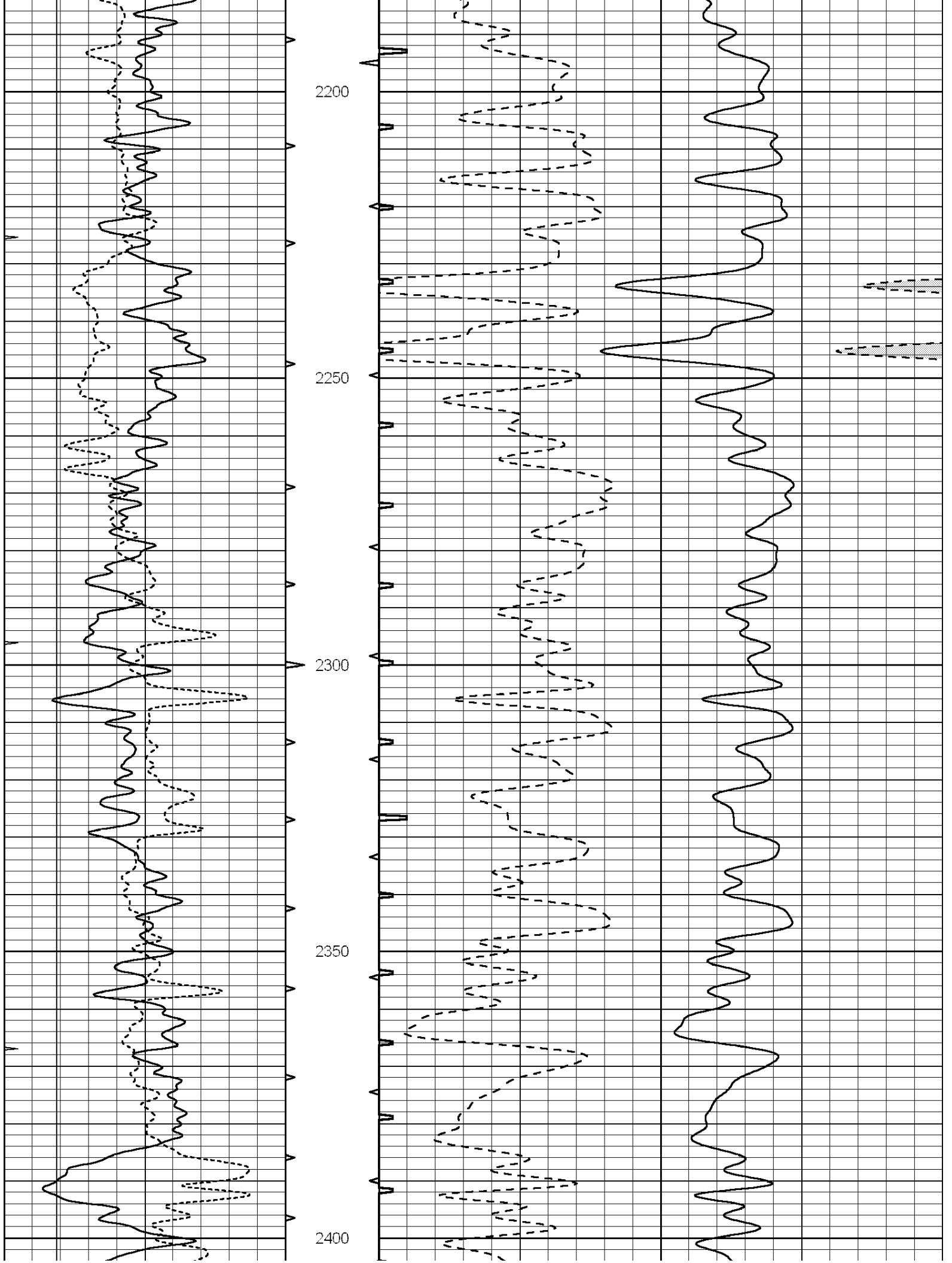


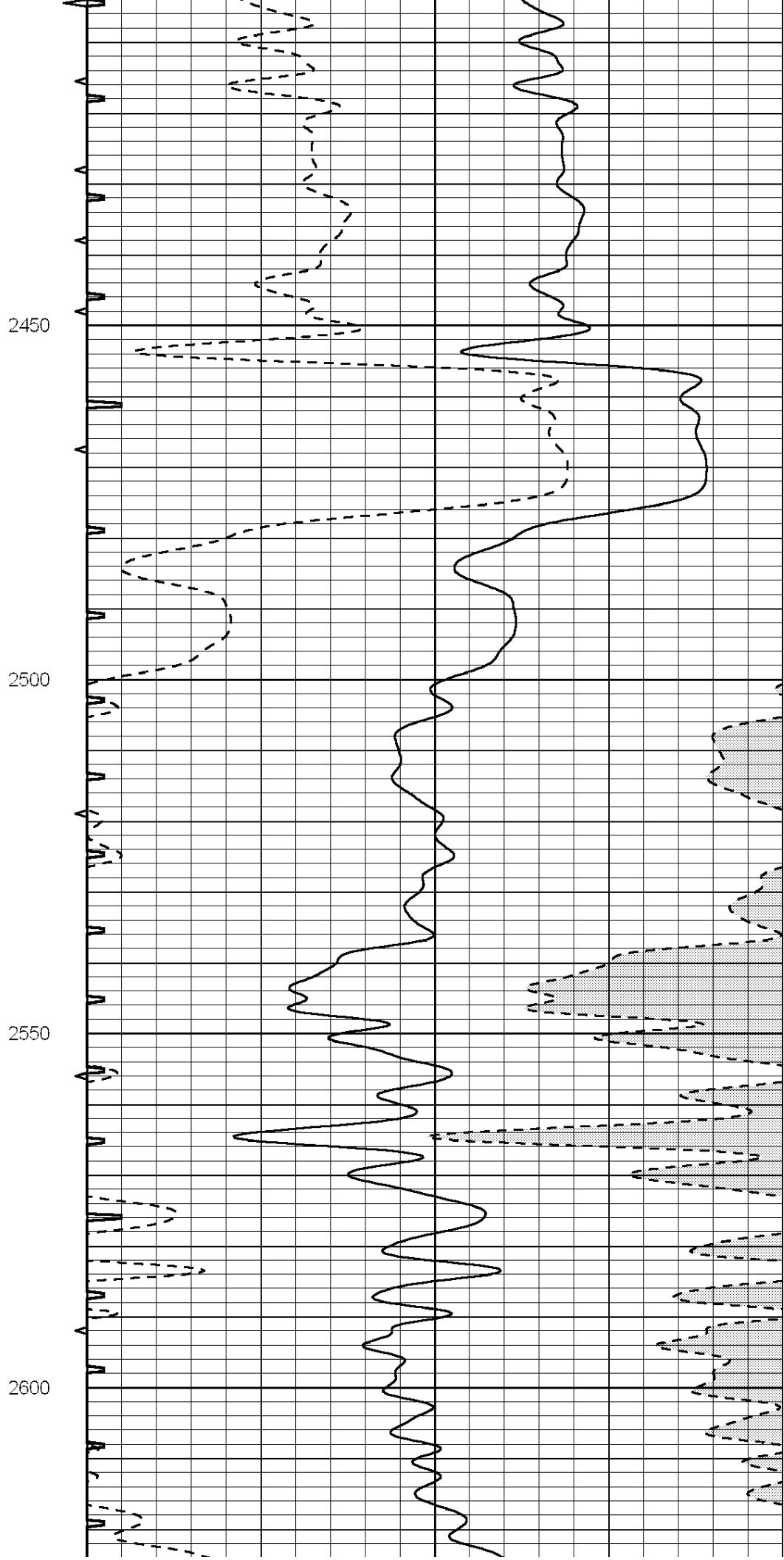
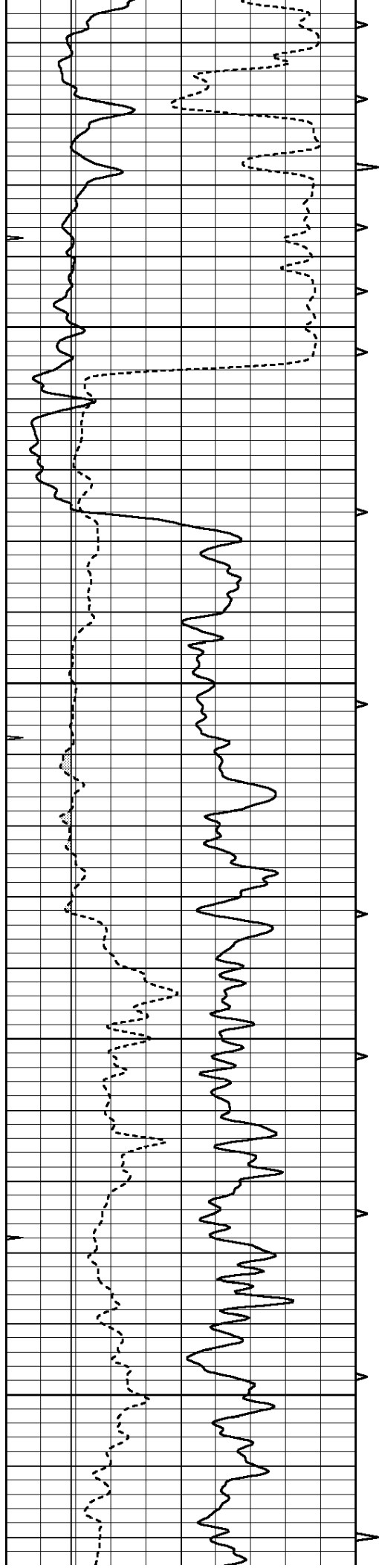


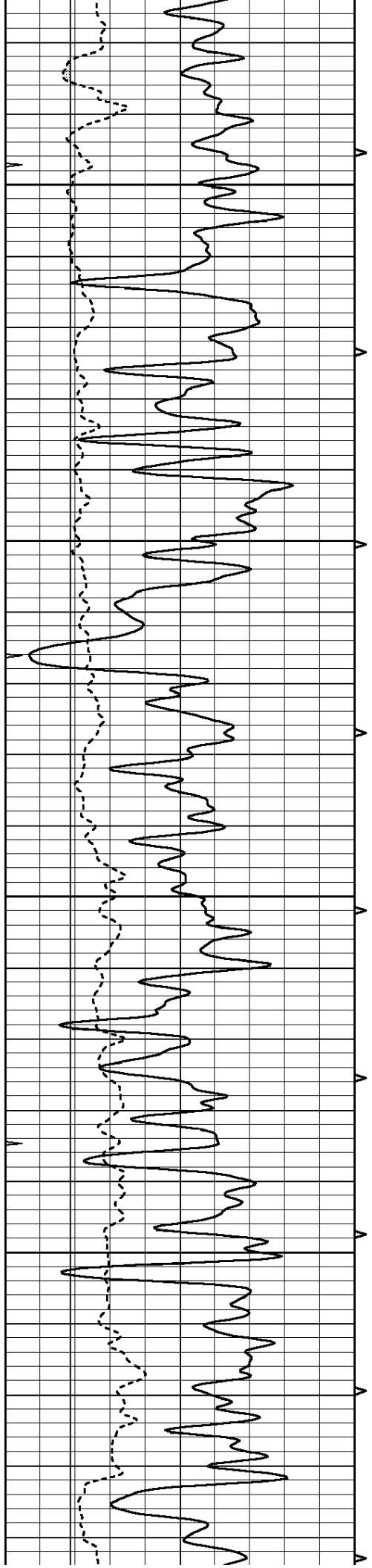










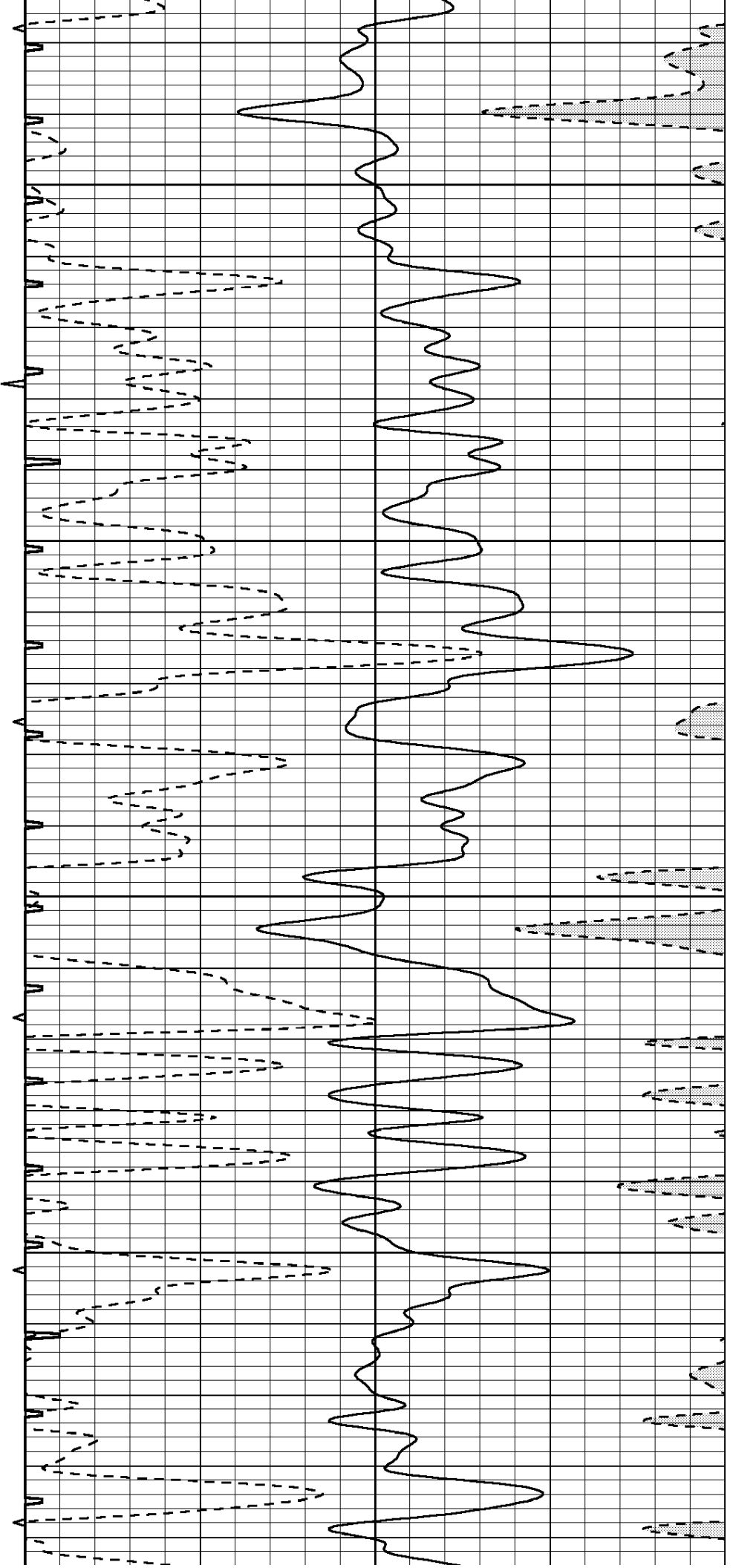


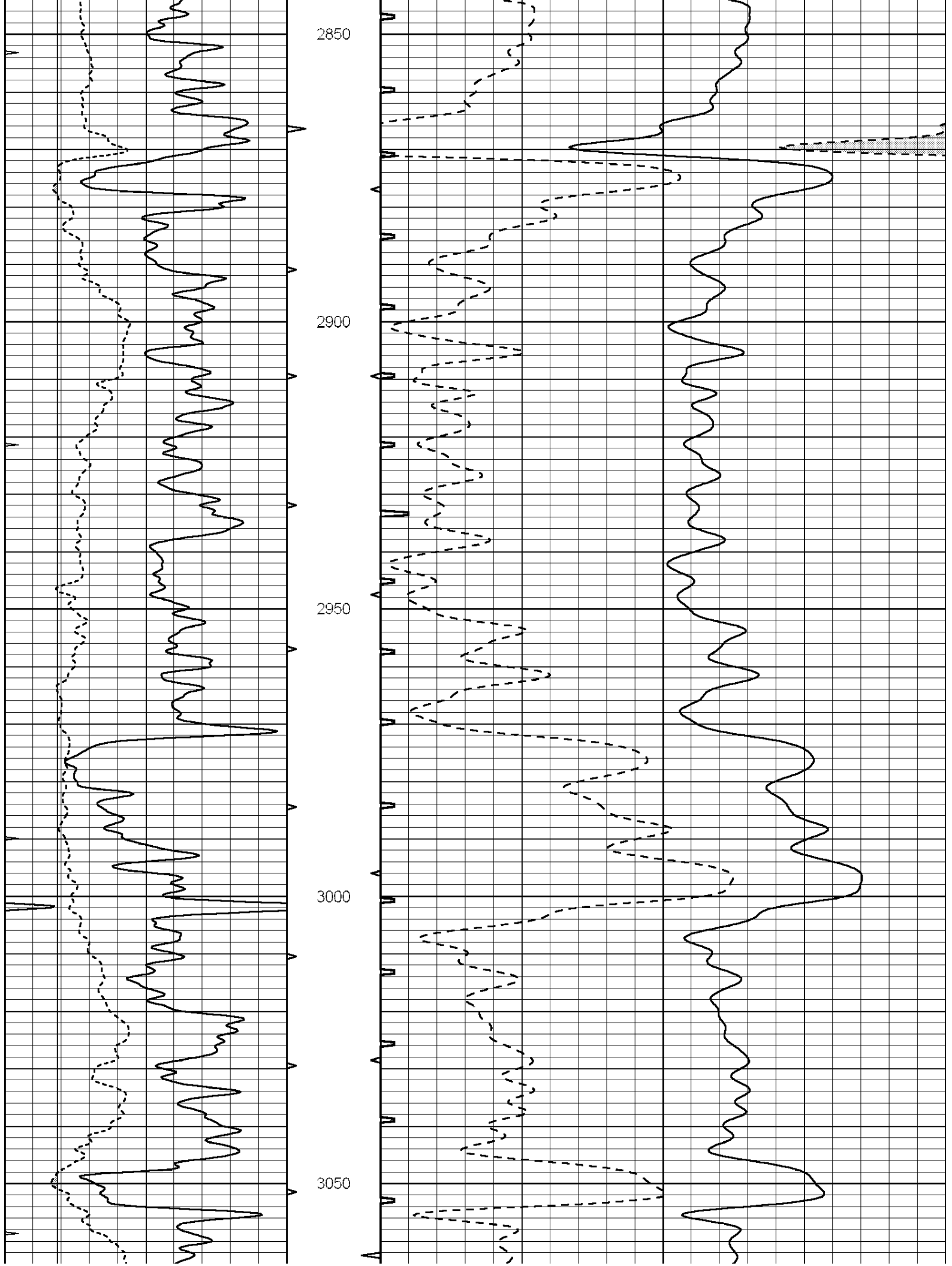
2650

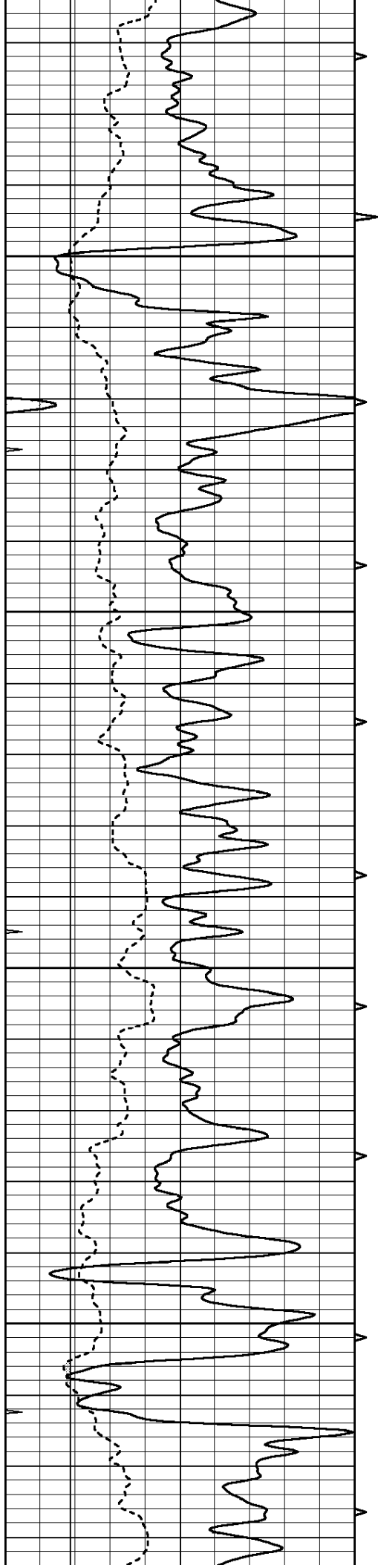
2700

2750

2800





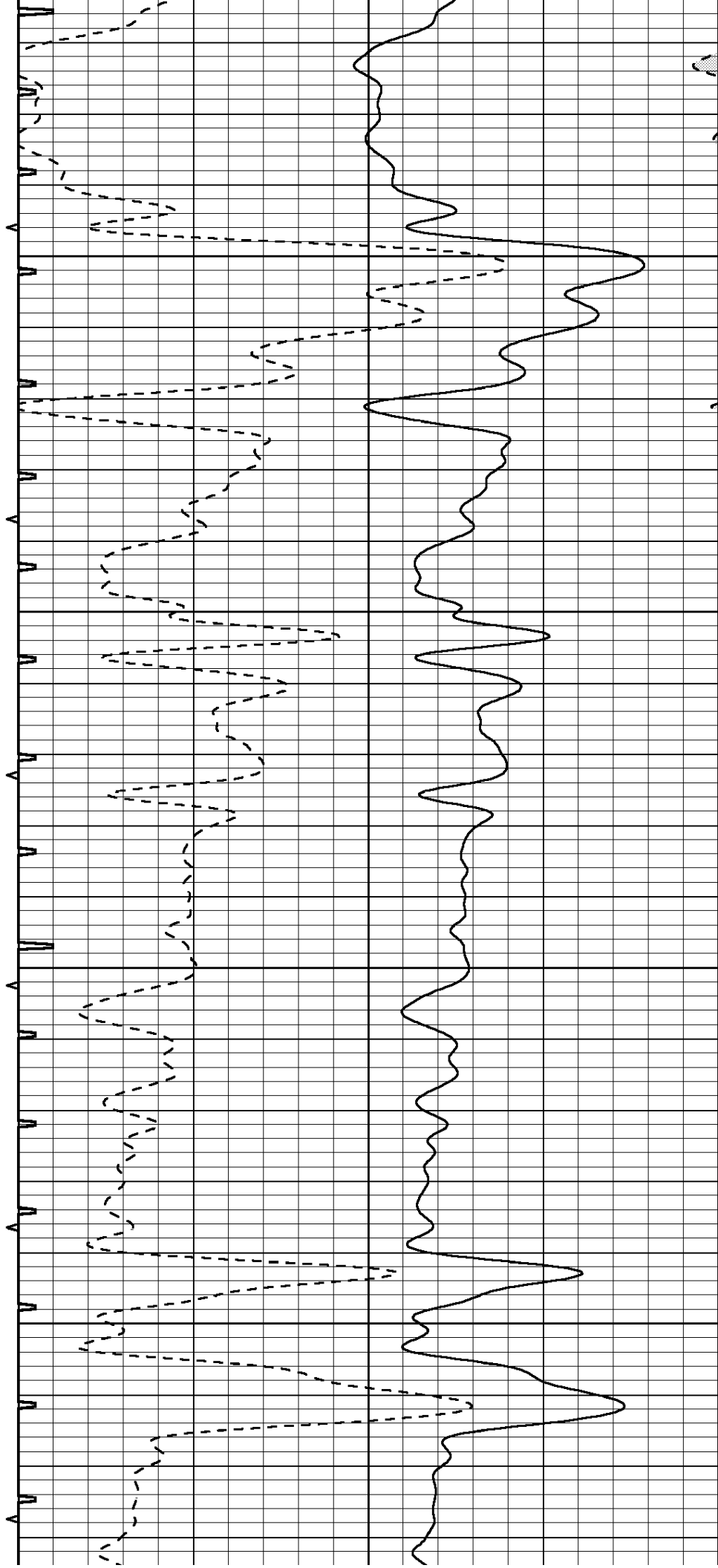


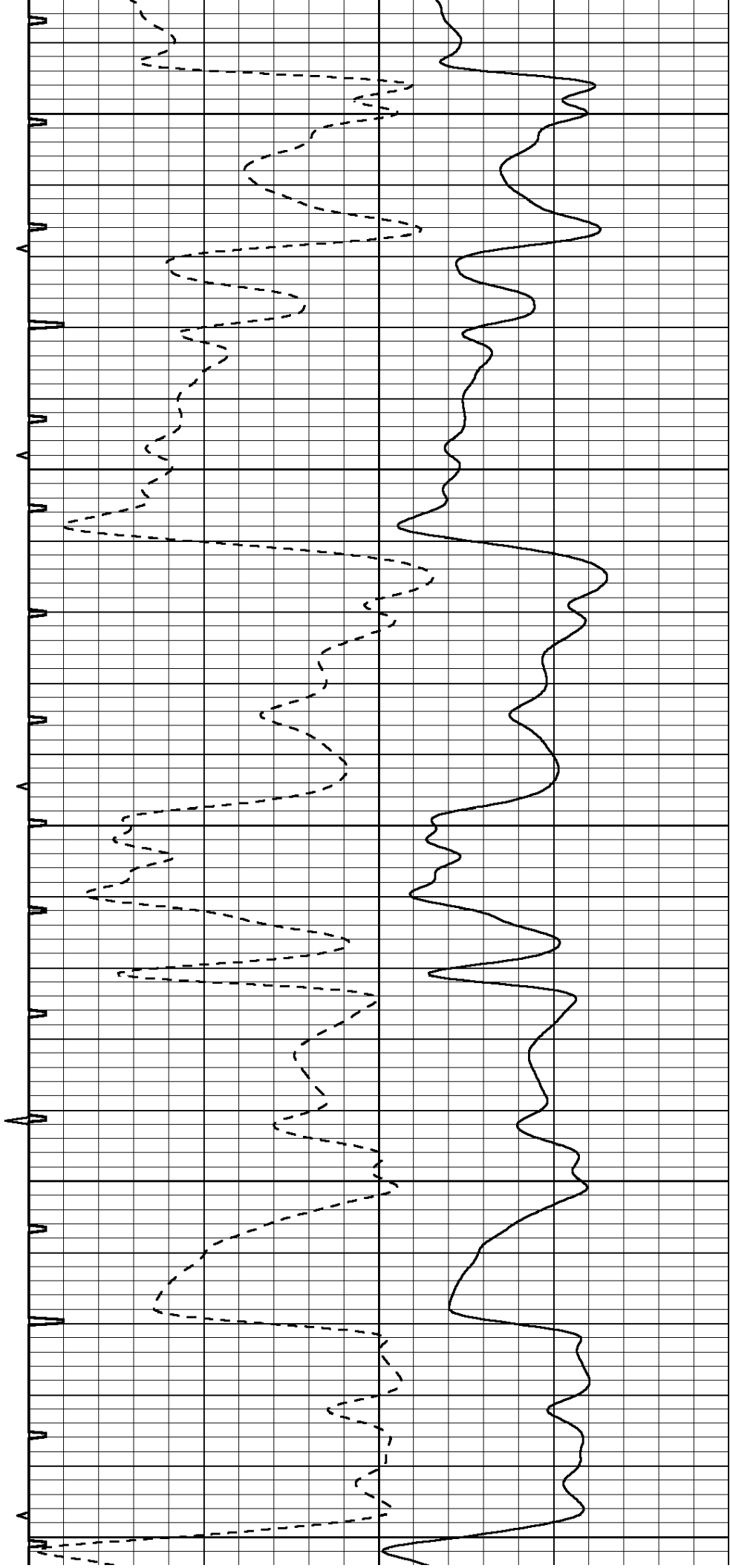
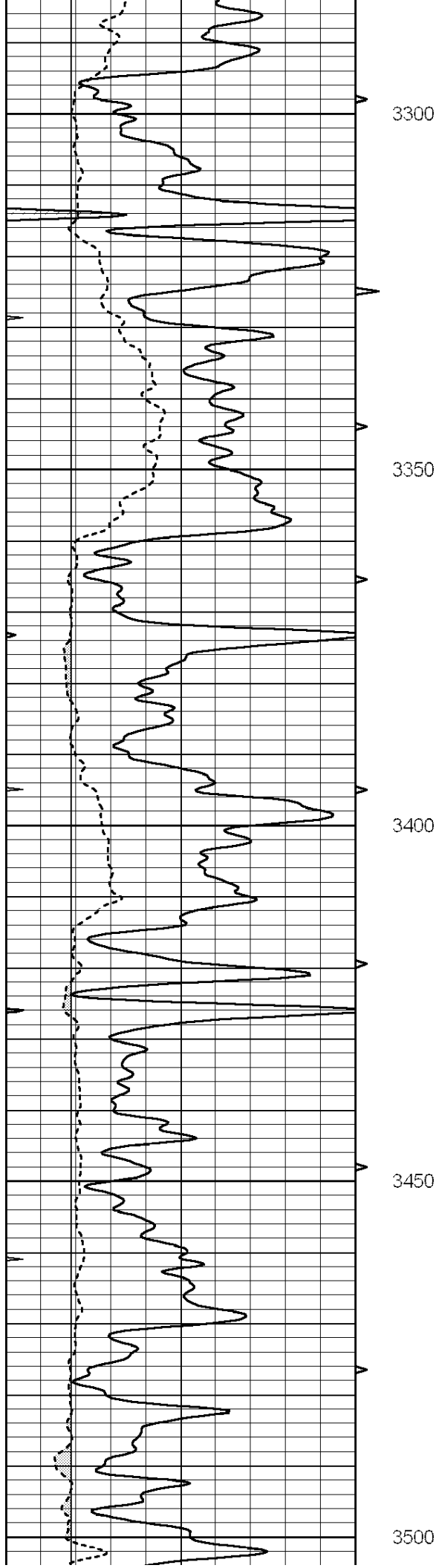
3100

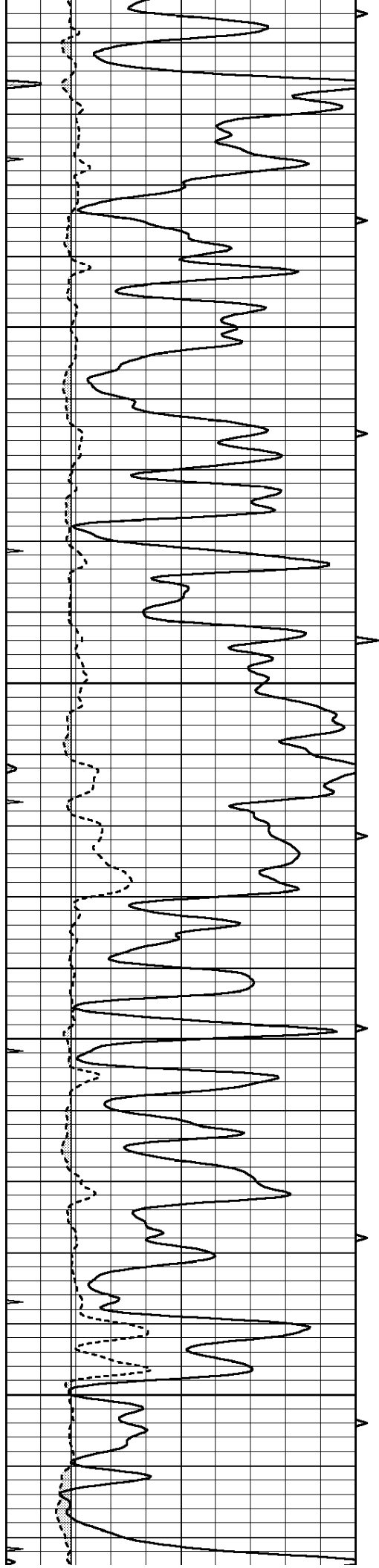
3150

3200

3250





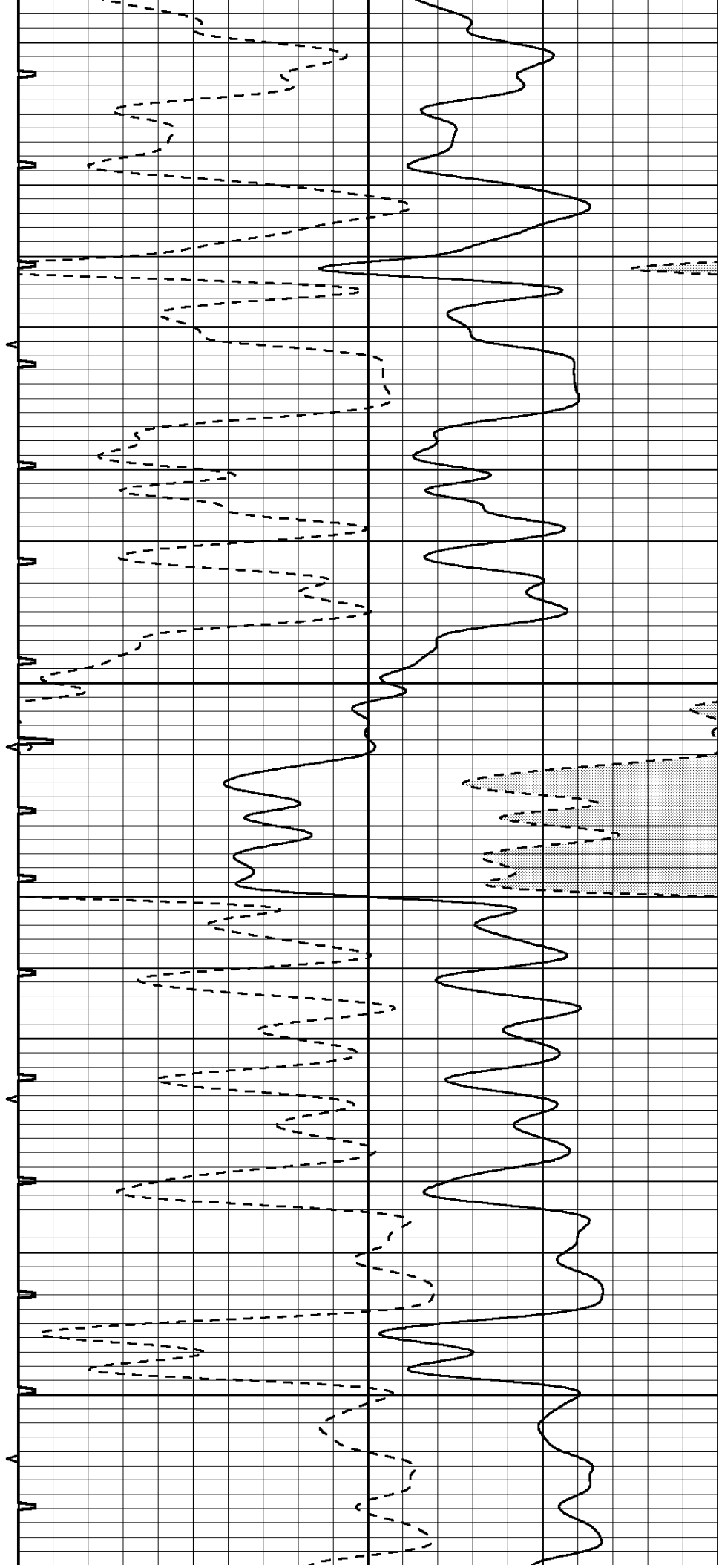


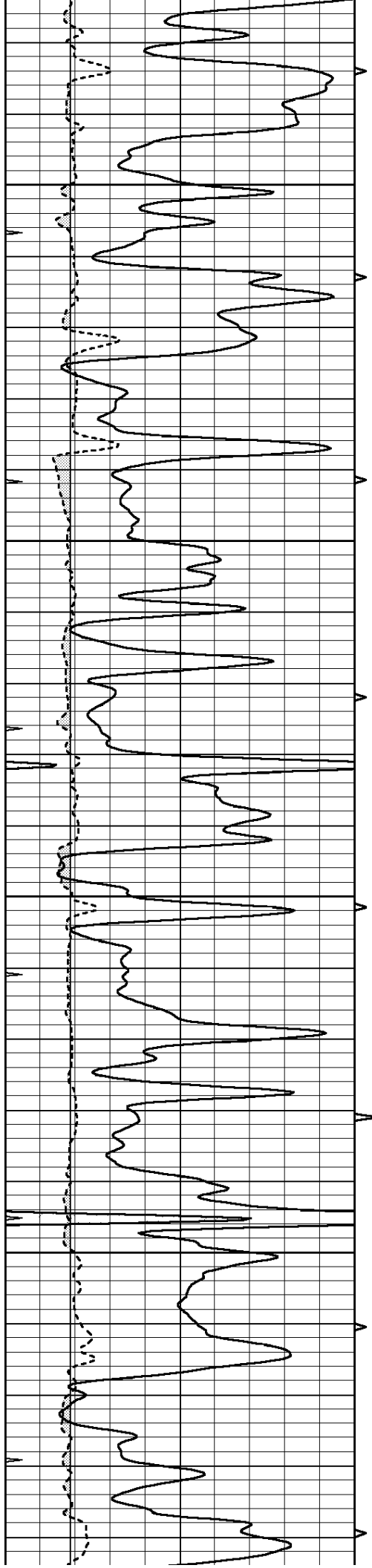
3550

3600

3650

3700



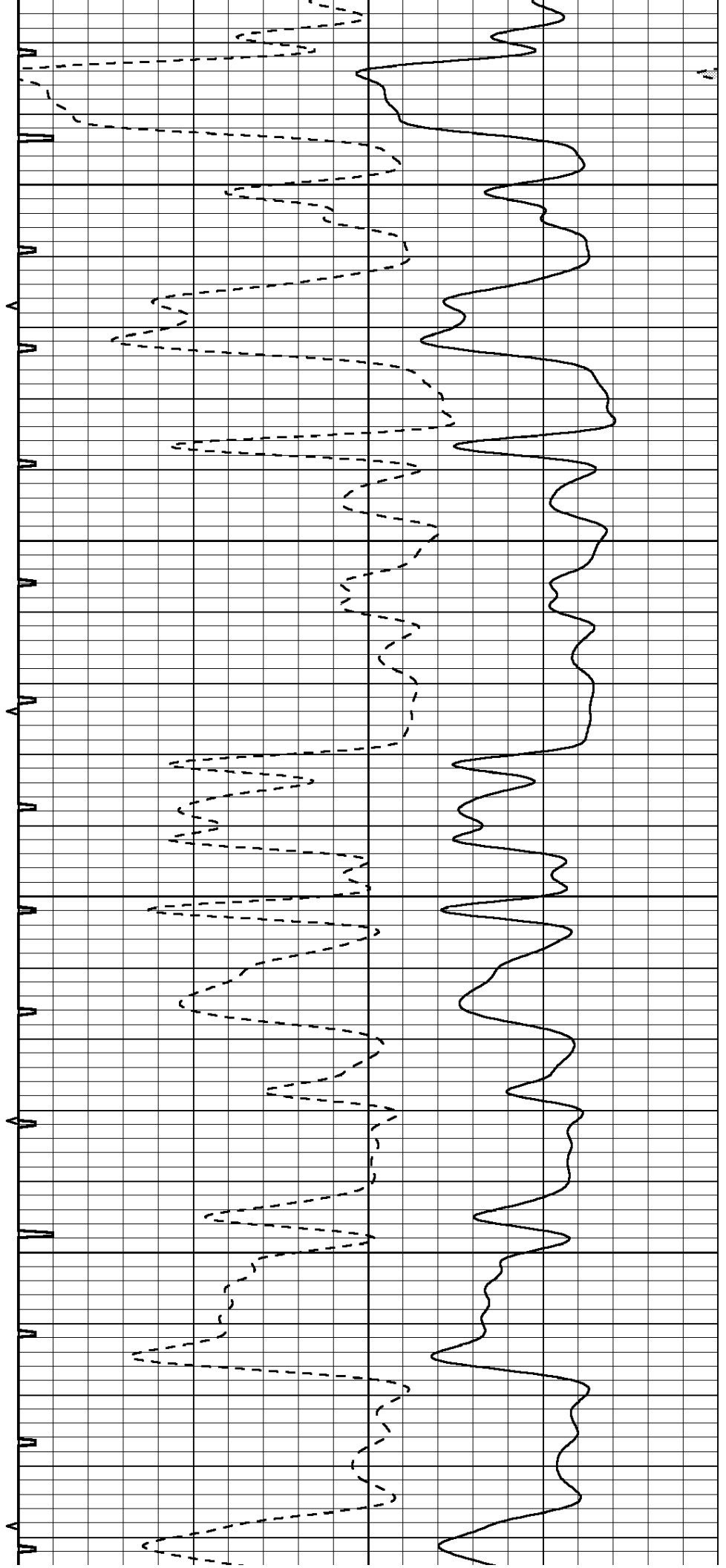


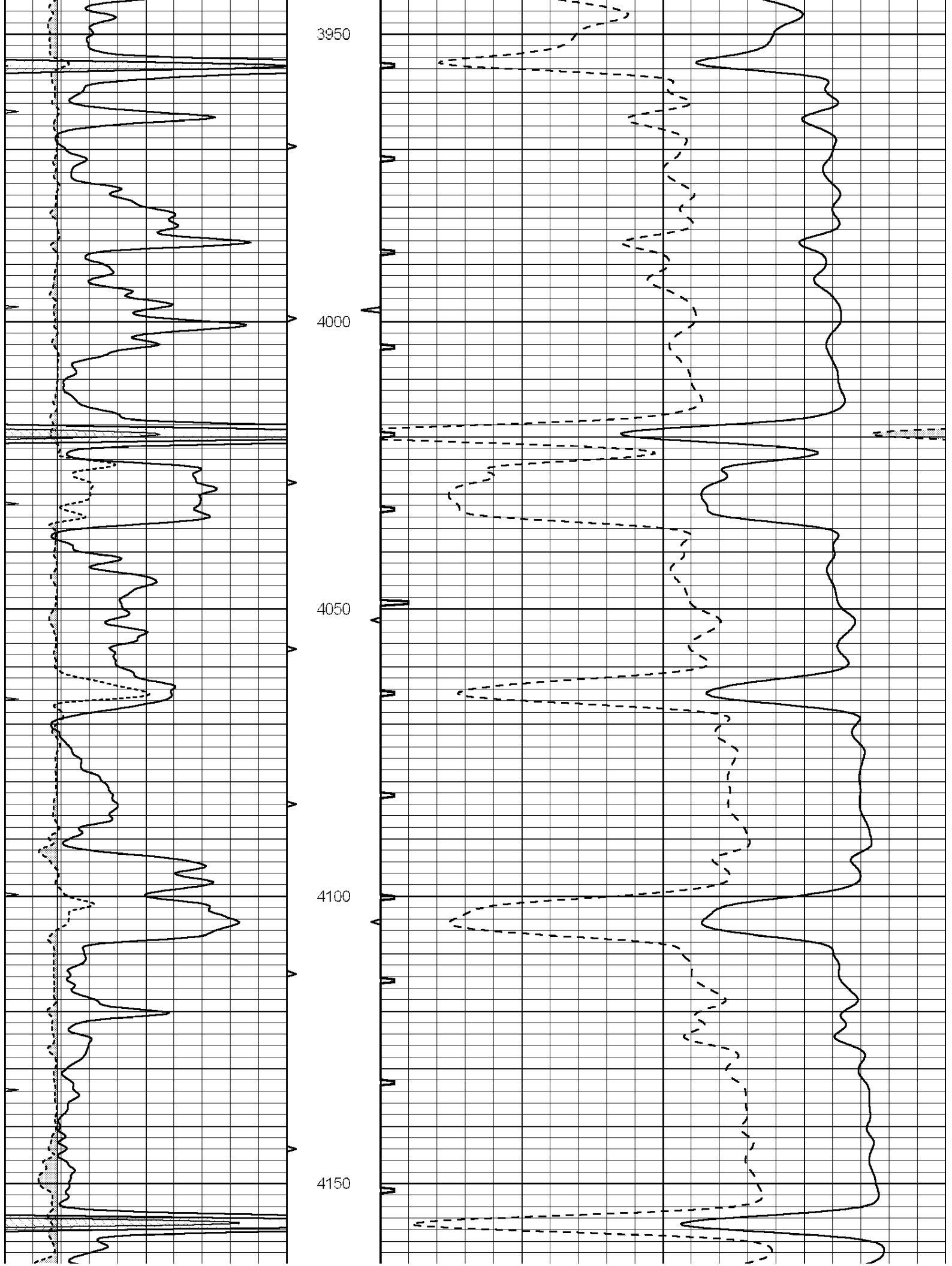
3750

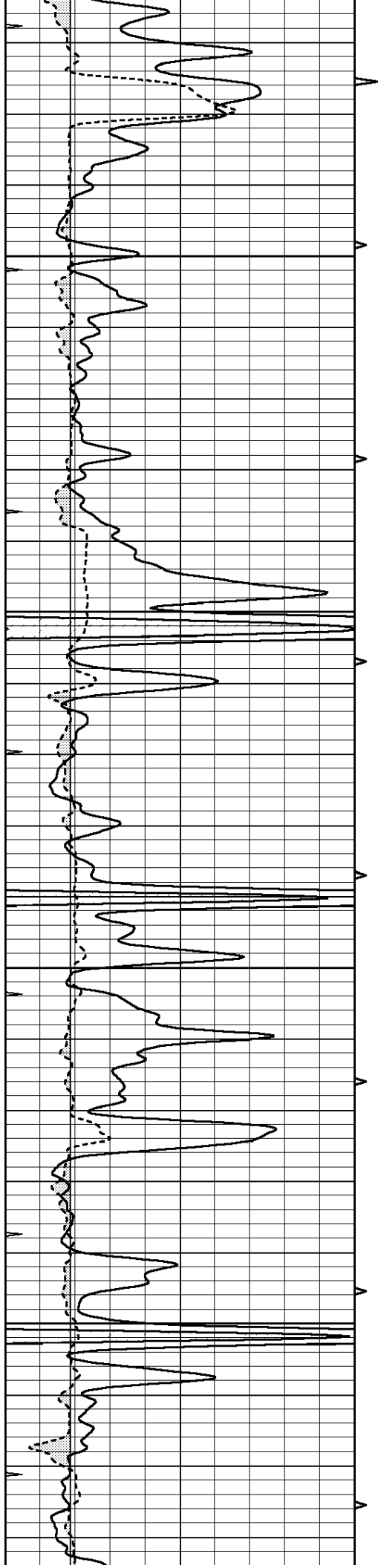
3800

3850

3900





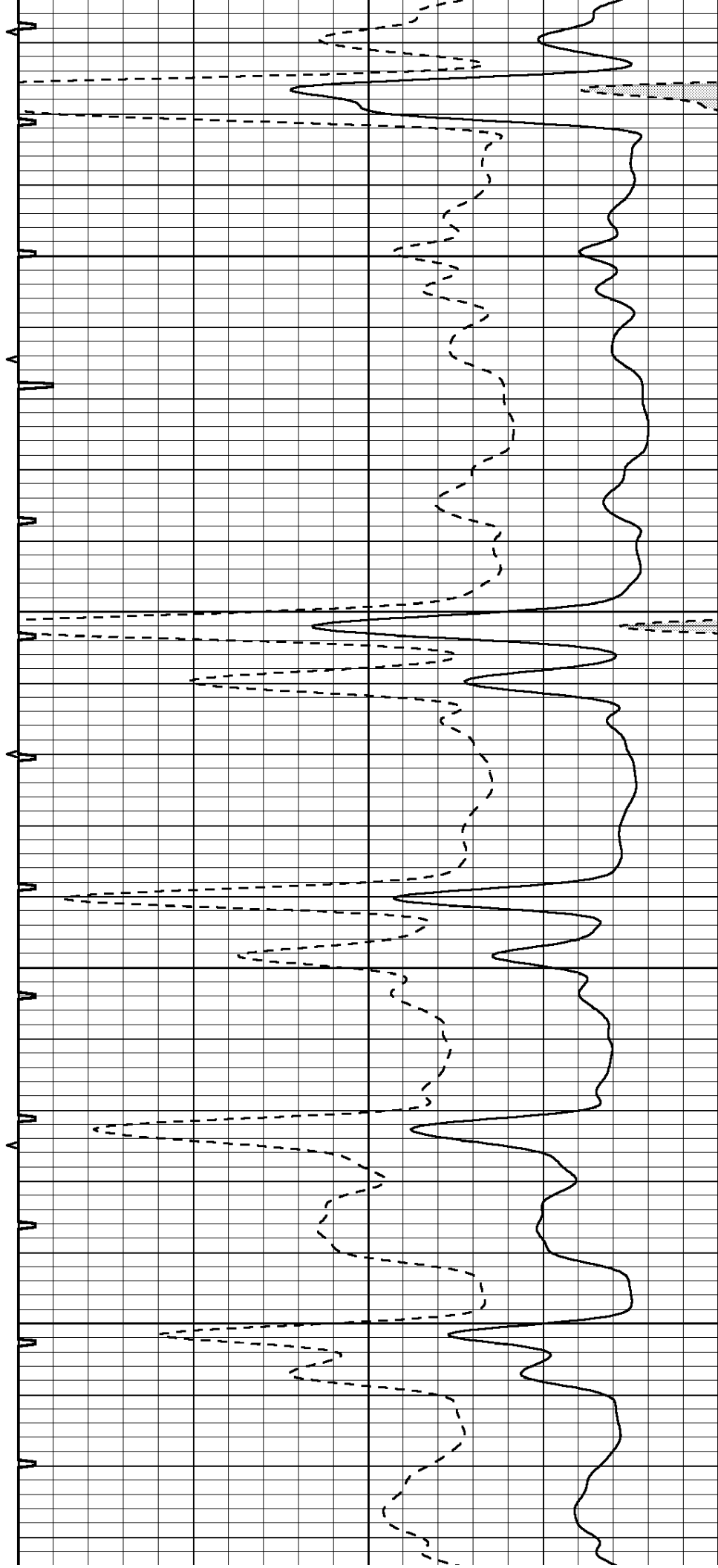


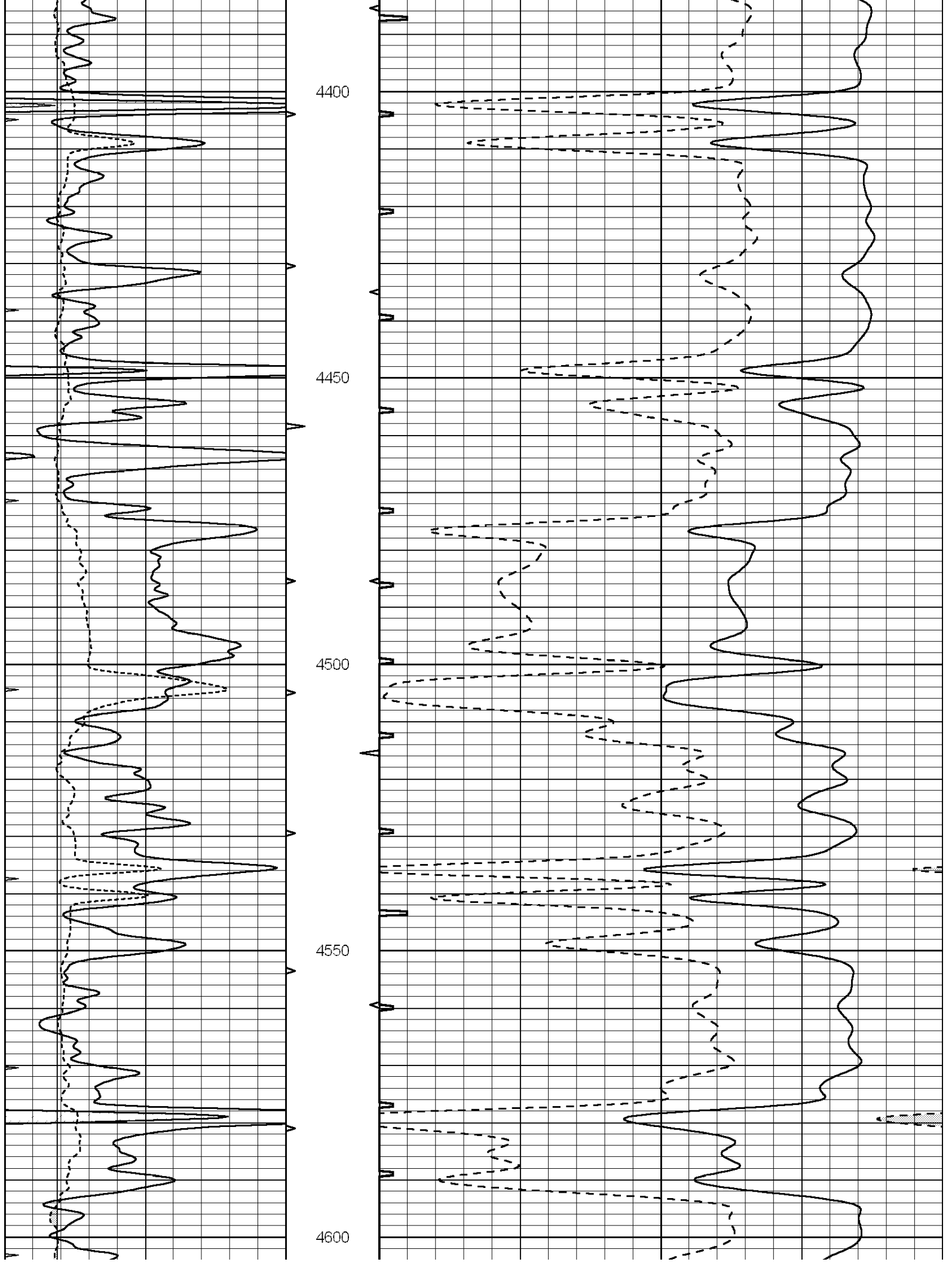
4200

4250

4300

4350





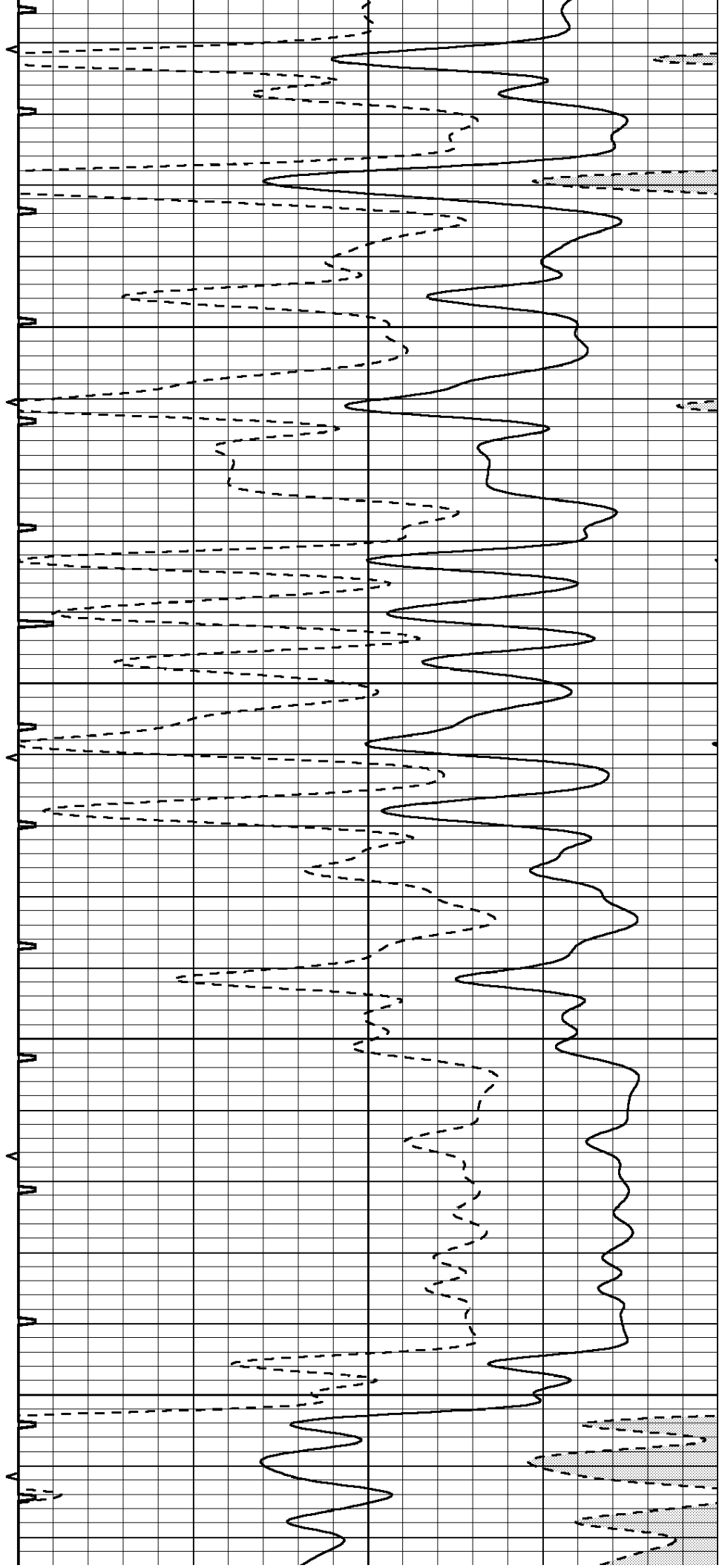


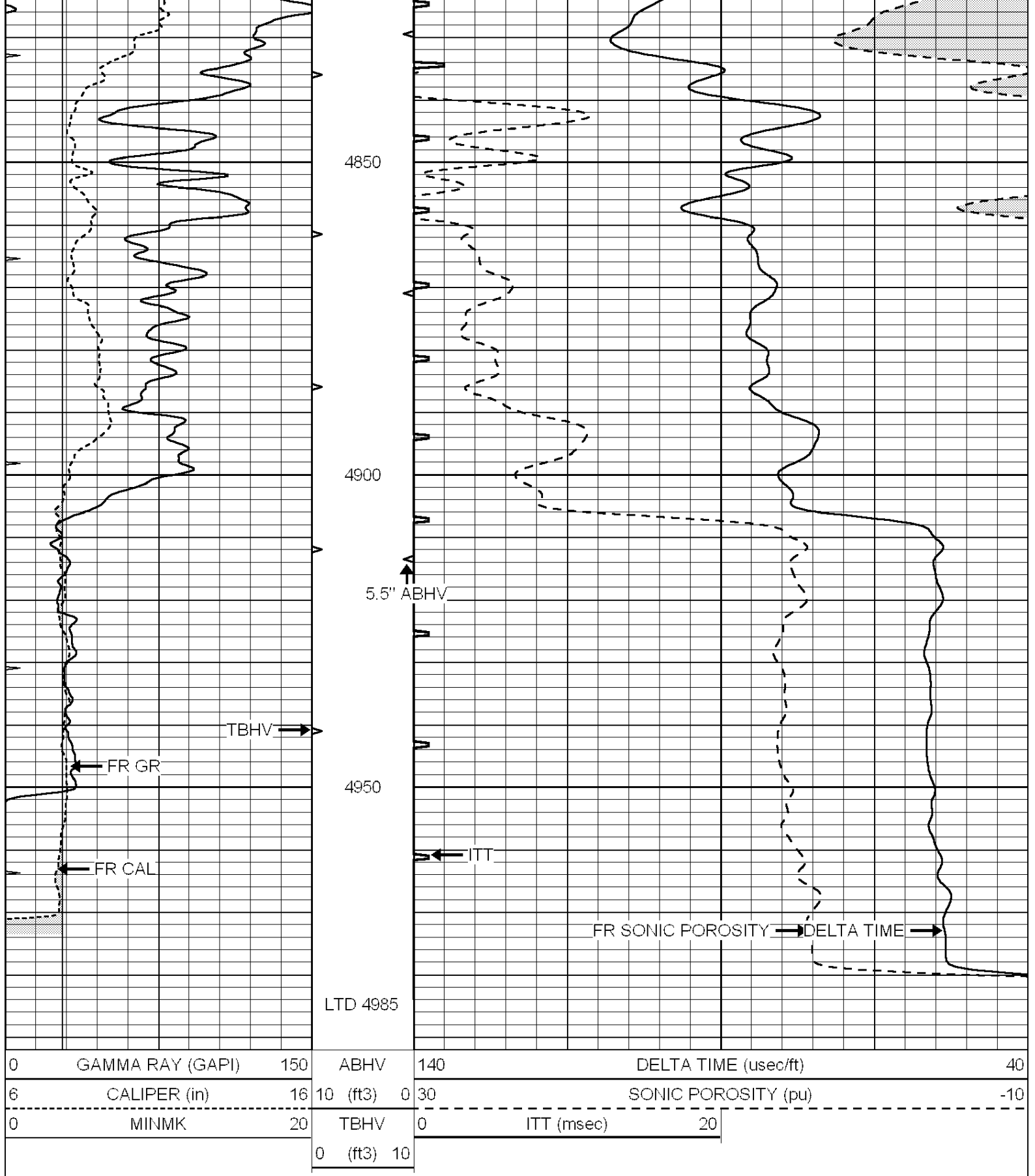
4650

4700

4750

4800





Dataset Pathname: pass3.2
 Presentation Format: slt
 Dataset Creation: Sun Oct 27 10:02:27 2013
 Charted by: Depth in Feet scaled 1:240

0	GAMMA RAY (GAPI)	150	ABHV	140	DELTA TIME (usec/ft)	40	
6	CALIPER (in)	16	10 (ft3)	0	30	SONIC POROSITY (pu)	-10
0	MINMK	20	TBHV	0	ITT (msec)	20	
			0 (ft3)	10			

