



Gamma Ray
Ccl/Radial
Cement Bond
Log

Company: Jack Horton
Well: Butcher # 6
Field: Peru-Sedan
County: Chautauqua
State: Kansas

Location: 1907 FSL & 2907 FEU
NE SE NE SW
SEC 25 TWP 35S RGE 10E
Elevation: 881'

Run Number: 1357
Date: 11/27/13
Bottom Logged Interval: 1357'
Top Log Interval: 6.34'
Open Hole Size: 2 3/4"
Drill Bit / Viscosity: N/A
Mud: N/A
Mud Record Temp: N/A
Time Well Reached Bottom: N/A
Equipment Number: OW-4
Location: Oklahoma

Table with columns: Run Number, Bit, To, Size, Weight, From, To. Includes sections for Gamma Ray, Casing Collar, and Pipe Bond.

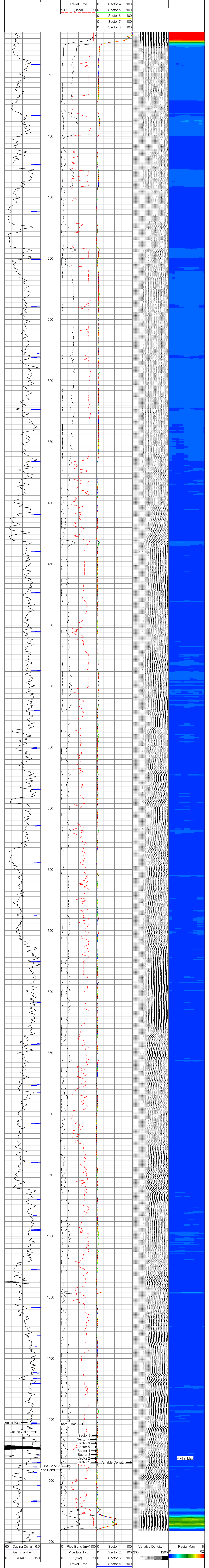
All interpretations are opinions based on inferences from electrical or other measurements and we cannot and do not guarantee the accuracy or correctness of any interpretation...

Comments: File #OW4-3055rbl, Thank You for using Osage Wireline!, Crew: Schonfeld

Gr/Ccl/Radial

Database File: c:\warrior\data\trntr 2013 logs\ow4-3055rbl jack horton butcher 6.db
pass1.1
Presentation Format: ow-4rb4
Dataset Creation: Mon Dec 09 11:57:08 2013 by Calc SOC 111108
Charted by: Depth in Feet scaled 1.240

Summary table with columns: 60 Casing Collar -6.5, Gamma Ray, 0 (GAPI) 150, 0 Pipe Bond (mV) 100, 0 Sector 1 100, Variable Density, 0 Radial Map 82.



Summary table for the main log plot, including Pipe Bond (mV), Sector 1-8, Variable Density, and Radial Map values.

Gr/Ccl/Radial

Dataset: ow4-3055rbl jack horton butcher 6.db: field/well/run1/pass1.1
Total Length: 20.29 ft
Total Weight: 197.00 lb
O.D.: 3.25 in

Table with columns: Sensor, Offset (ft), Schematic, Description, Len (ft), OD (in), Wt (lb). Lists sensors like WVF3FT, WVF5FT, CCL, and GR.

