



MID CONTINENT WELL LOGGING SERVICE, INC.

CONTINUOUS WELL LOGGING / COMPLETE HYDROCARBON ANALYSIS

2222 WESTPARK DR. STE. A
NORMAN, OK 73069
OFFICE (405) 360-7333
OPERATIONS (405) 590-3655
SALES (405) 203-9989

Scale 1:240 (5"=100') Imperial
Measured Depth Log

Well Name: Simons 1736 1-12
Location: Section 12, T17S, R36W Wichita County, Ks
License Number: 15-203-20246
Spud Date: 11/18/2013
Surface Coordinates: SHL: 400' FNL & 2,240' FWL of Section 12, T17S, R36W
Region: Wichita County, Ks
Drilling Completed: 11/24/2013

Bottom Hole REPORT FOR: Mr. William Scott
Coordinates: LOGGER: MCWL UNIT #18: Mr. Blake Johnson and Mr. John Reeve
Ground Elevation (ft): 3,221' K.B. Elevation (ft): 3,233'
Logged Interval (ft): 2,000' To: 5,050 Total Depth (ft): 5,050
Formation: MISSISSIPPIAN
Type of Drilling Fluid: WATER/ NATIVE GEL

Printed by MUD.LOG from WellSight Systems 1-800-447-1534 www.WellSight.com

OPERATOR

Company: Sandridge Energy, INC.
Address: 123 Robert S. Kerr Avenue, Ste. 2430
Oklahoma City, Oklahoma 73102-6406

GEOLOGIST

Name: William Scott
Company: Sandridge Energy, Inc
Address: 123 Robert S. Kerr Avenue, Ste. 2430
Oklahoma City, Oklahoma 73102-6406

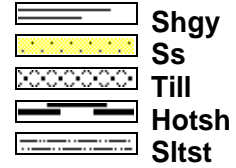
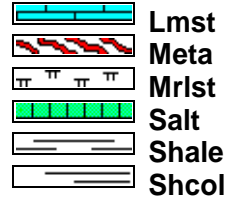
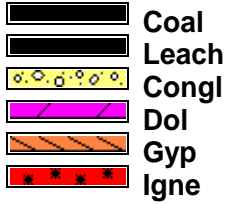
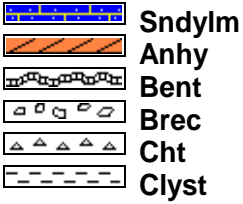
Cores

DSTs

Comments

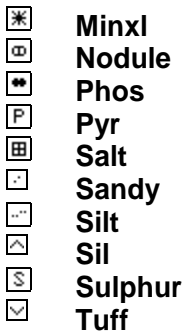
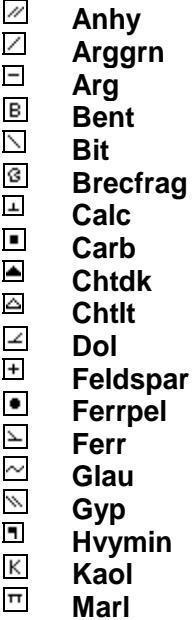
Logged By: Blake Johnson/ John Reeve

ROCK TYPES

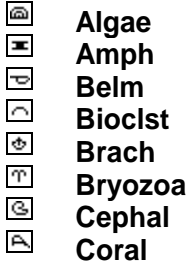


ACCESSORIES

MINERAL



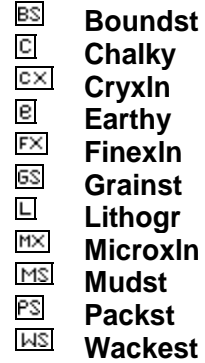
FOSSIL



STRINGER

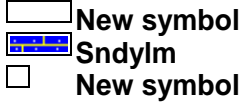
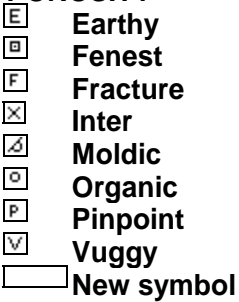


TEXTURE



OTHER SYMBOLS

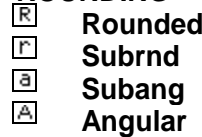
POROSITY



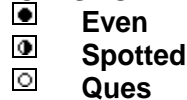
SORTING



ROUNDING



OIL SHOW

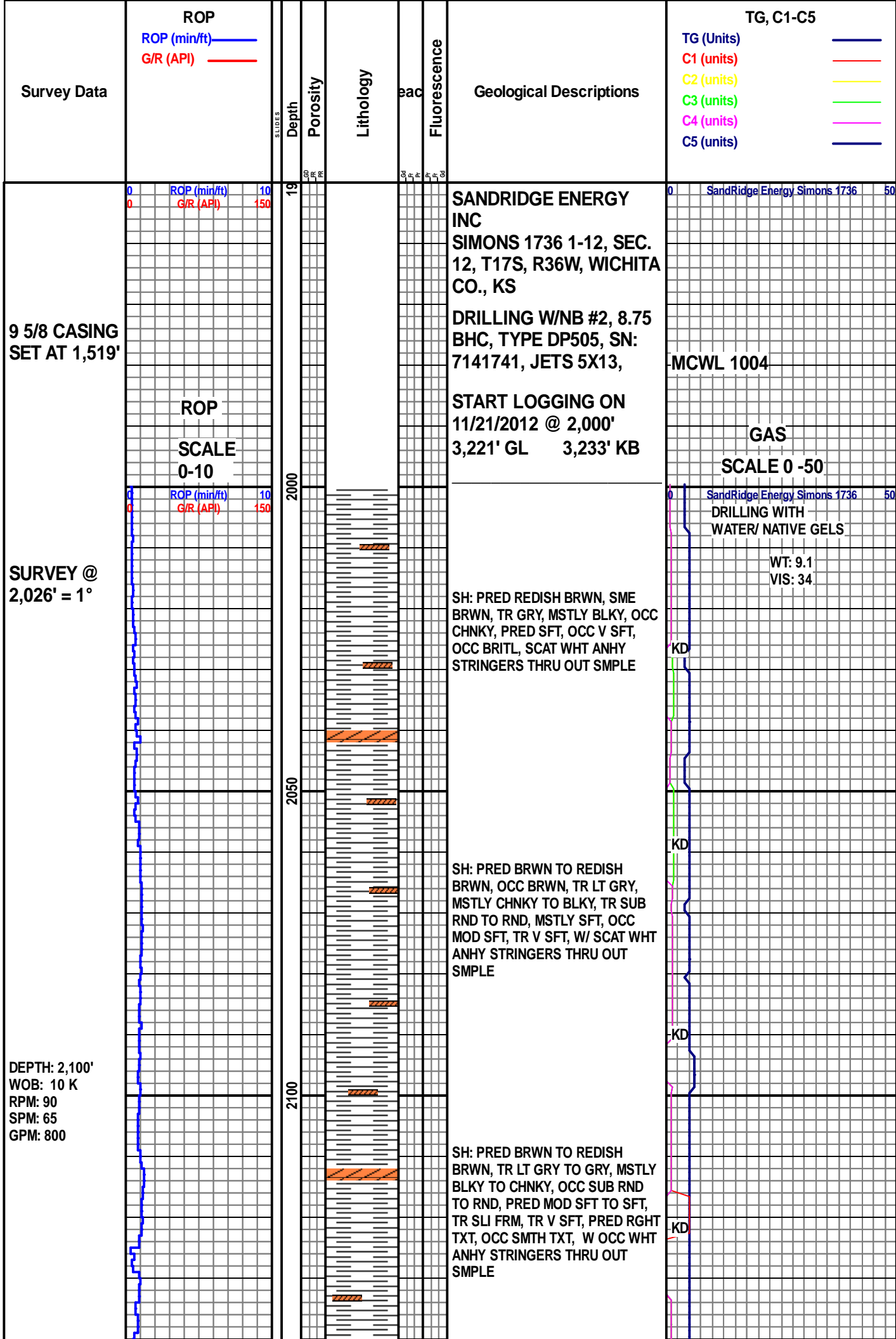


INTERVAL

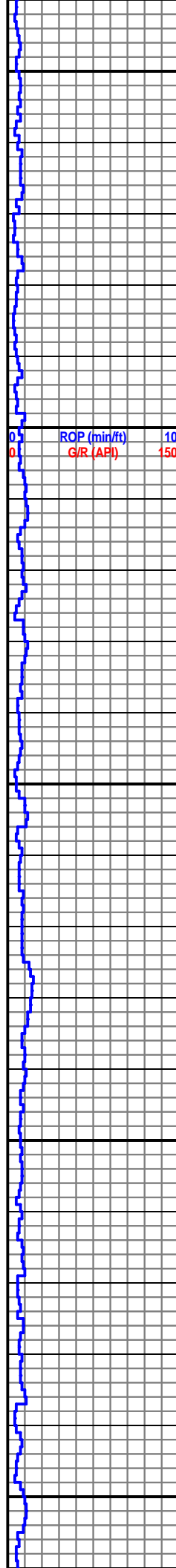


EVENT

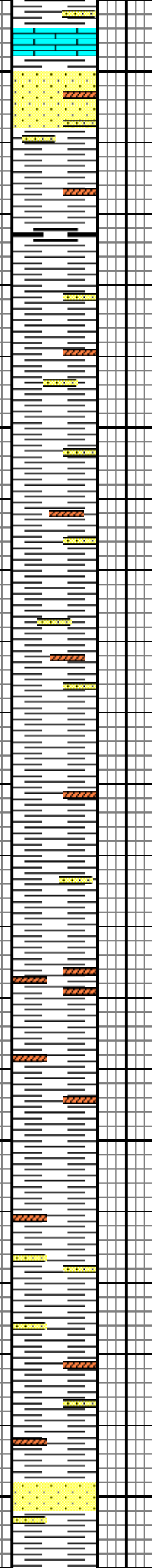




DEPTH: 2,300'
WOB: 8-10 K
RPM: 88
SPM: 65
GPM: 820



2150
2200
2250
2300
2350



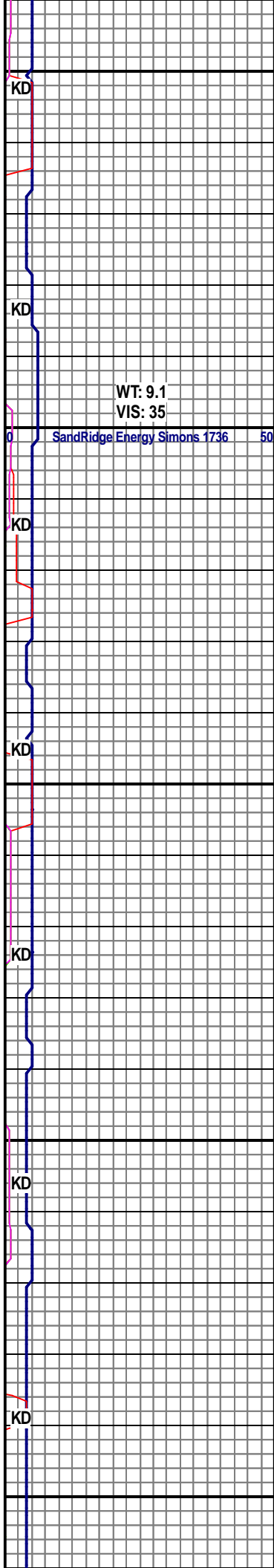
**CEDAR HILL BASE @
2,147' MD (1,086')**

SH: PRED REDISH BRWN TO BRWN, OCC LT GRY, PRED CHNKY, OCC SUB RND TO RND, MSTLY SFT, OCC V SFT, TR SLI FRM, MSTLY RGH TXT, OCC SMTH TXT, W WHT TO OFF WHT LS THRU OUT, SCAT SS/ANHY THRU OUT SMPLE, NO FLOR, NO CUT, NO SHOW

SH: PRED REDISH BRWN, OCC BRWN, TR OF LT GRY, PRED BLKY TO CHNKY, OCC SUB RND TO RND, MSTLY SFT, OCC MOD SFT TO SLI FRM, MSTLY RGH TXT, OCC SMTH TXT, W SCAT SS/ANHY STRINGRS THRU OUT SMPLE

SH: PRED REDISH BRWN TO BRWN, OCC LT GRY, PRED CHNKY, OCC SUB RND TO RND, MSTLY SFT, OCC V SFT, TR SLI FRM, MSTLY RGH TXT, OCC SMTH TXT, SCAT SS/ANHY THRU OUT SMPLE

SH: MSTLY RED/BRN, PRED BLKY, SFT- MOD SFT, TR MOD FRM, ERTHY, SUB WXY TXT, OCC SLTY, SS: WHT- OFF WHT, V FN GRNS, FR SRT, CONS, FRM- MOD FRM, TR SLI FRI, TR FREE QTZ GRNS, N/S

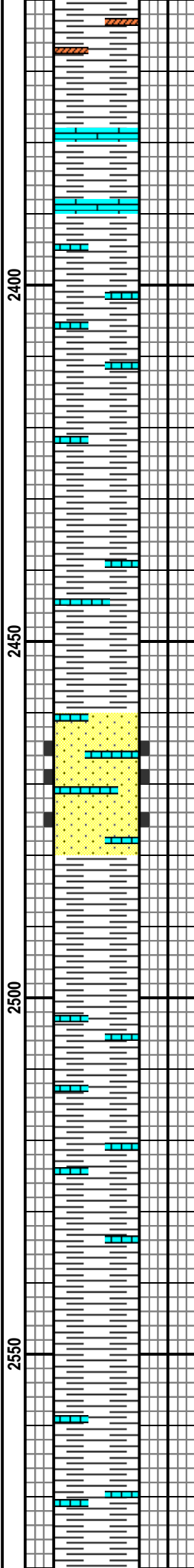
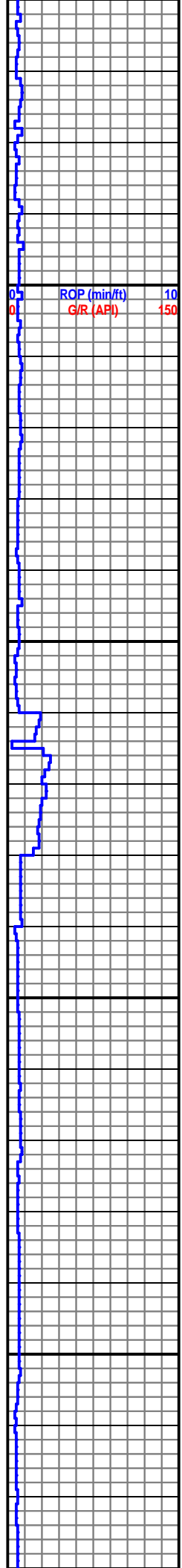


WT: 9.1
VIS: 35

SardRidge Energy Simons 1736 50

DEPTH: 2,500'
 WOB: 8-11 K
 RPM: 87
 SPM: 64
 GPM: 820

SURVEY @
 2,521' = 1
 1/4°



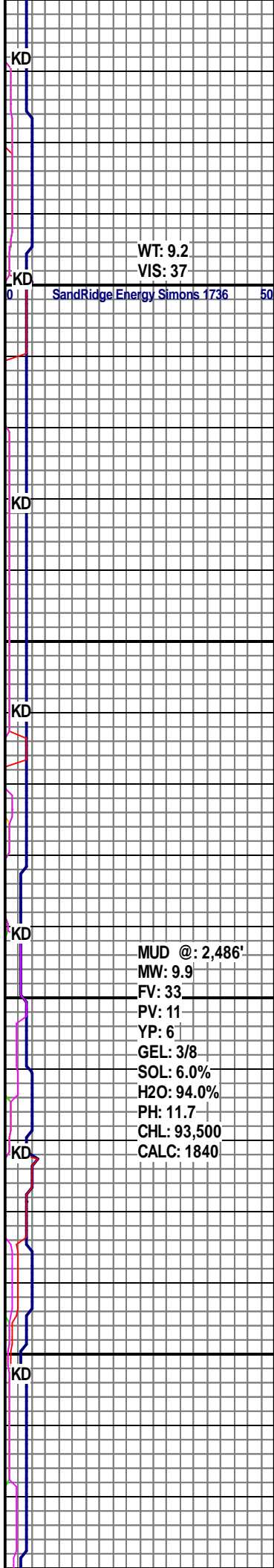
SH: PRED RED/BRN, MSTLY BLKY,
 TR PLTY, MOD SFT- SFT, INCRG TR
 MOD FRM, ERTHY, SUB WXY TXT,
 SCAT SLTY, SS/LS STRNGRS THRU
 OUT, N/S

SH: RED/BRN, MSTLY BLKY, OCC
 PLTY, MOD SFT- MOD FRM, SCAT
 SFT THRU OUT, PRED MOD SMTH
 TXT TXT, SCAT MOD RGH SLTY
 TXT THRU OUT, DCRG SS/LS
 STRNGRS THRU OUT, N/S

SH: PRED RED/BRN, SCAT GY
 THRU OUT, MSTLY BLKY- PLTY, TR
 SPLNTY, MOD FRM- MOD SFT,
 SCAT SFT THRU OUT, MOD SMTH-
 MOD RGH SLTY TXT, SS: WHT- OFF
 WHT, SME OPQ, TR RED, V FN- FN
 GRNS, WELL SRTD, FRM- MOD
 FRM, OCC SLI FRI, TR DULL YEL
 MIN FLOR, NO VIS CUT, NO RESD
 RING, NO ODOR

SH: MSTLY RED/BRN, SCAT LT GY-
 MED GY THRU OUT, MSTLY BLKY-
 PLTY, DCRG TR SPLNTY, PRED
 MOD FRM- MOD SFT, SCAT SFT
 THRU OUT, MOD RGH SLTY- MOD
 SMTH TXT, W/ LS STRNGRS, N/S

SH: PRED RED/BRN, OCC LT GY-
 MED GY, TR DRK GY, MSTLY BLKY,
 OCC PLTY, PRED MOD FRM- MOD
 SFT, SCAT SFT THRU OUT, TR FRM,
 MOD RGH SLTY TXT- MOD SMTH
 TXT, LS STRNGRS, N/S

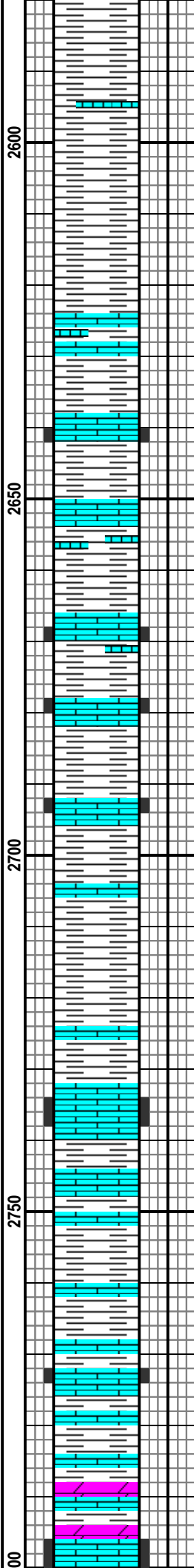
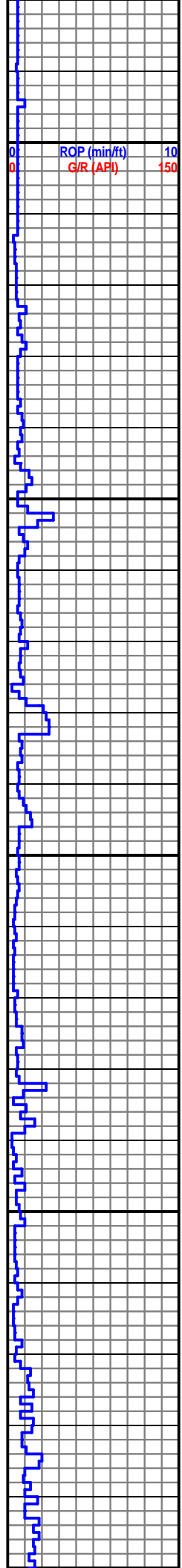


WT: 9.2
 VIS: 37

SardRidge Energy Simons 1736 50

MUD @: 2,486'
 MW: 9.9
 FV: 33
 PV: 11
 YP: 6
 GEL: 3/8
 SOL: 6.0%
 H2O: 94.0%
 PH: 11.7
 CHL: 93,500
 CALC: 1840

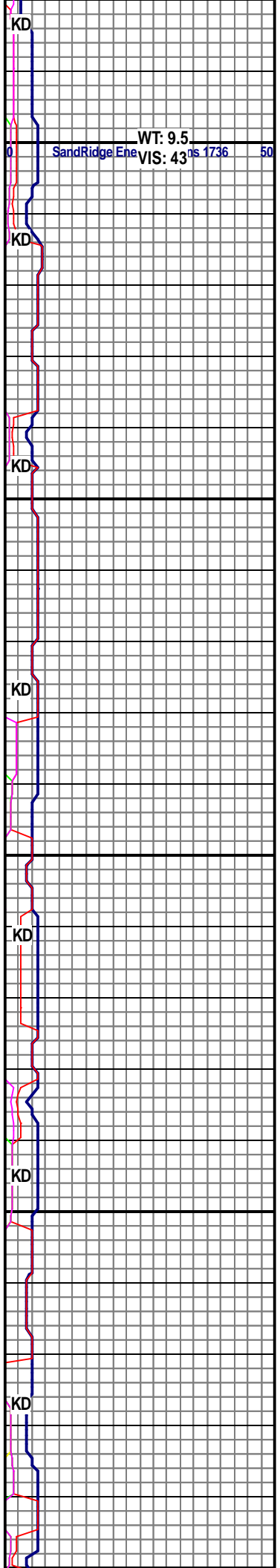
DEPTH: 2,700 '
WOB: 10-11 K
RPM: 87
SPM: 65
GPM: 820

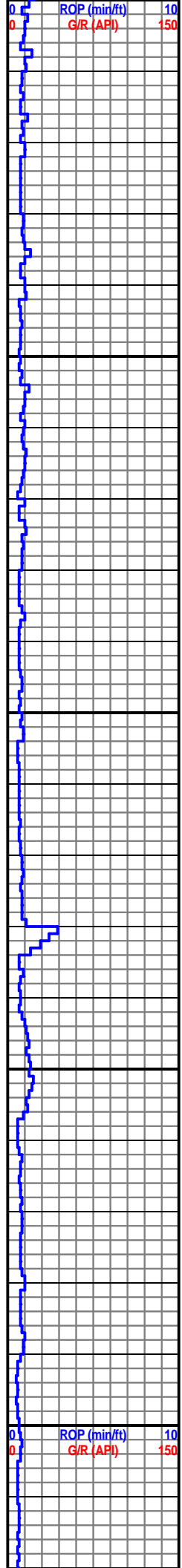


SH: RED/BRN, OCC LT GY- MED GY, TR DRK GY, ABUND BLKY, OCC PLTY, MOD FRM- MOD SFT, SCAT SFT THRU OUT, TR FRM, MOD RGH SLTY TXT- MOD SMTH TXT, LS: WHT- OFF WHT, MTTLD WHT- LT GY, PLTY- BLKY, FRM- MOD FRM, V FN- FN XLN, TR DULL YEL MIN FLOR, NO VIS CUT, NO RESD RING

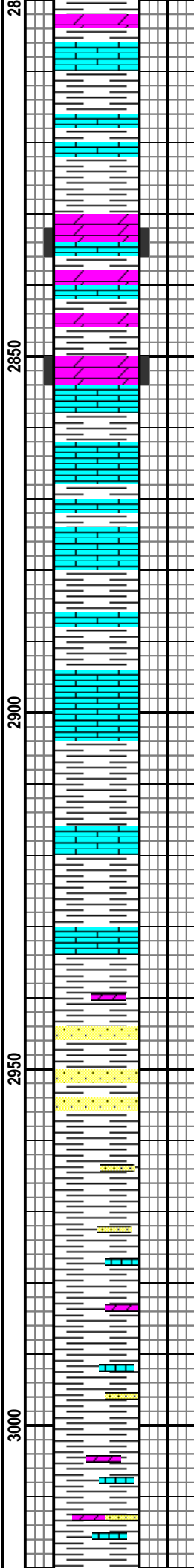
SH: MSTLY RED/BRN, SME LT GY- MED GY, OCC DRK GY, BLKY, TR PLTY, PRED MOD FRM, OCC MOD SFT, MSTLY MOD RGH SLTY TXT, SCAT MOD SMTH TXT, LS: OFF WHT- WHT, SCAT MTTLD OFF WHT- LT GY, PLTY, OCC BLKY, FRM- MOD FRM, TR MOD SFT, V FN- FN XLN, TR CRSE XLN, TR DULL YEL MIN FLOR, NO VIS CUT, NO RESD RING, NO ODOR

SH: PRED RED BRN- DRK GY, SCAT LT GY THRU OUT, BLKY- MOD FRM- MOD SFT, MOD RGH SLTY TXT- MOD SMTH TXT, LS: PRED OFF WHT- WHT, SCAT MTTLD WHT- LT GY THRU OUT, PLTY- BLKY, FRM- MOD FRM, V FN- FN XLN, TR MICRO FN XLN, TR DULL YEL MIN FLOR, NO VIS CUT, NO RESD RING, NO ODOR





DEPTH: 2,900'
 WOB: 10-11 K
 RPM: 90
 SPM: 61
 GPM: 815



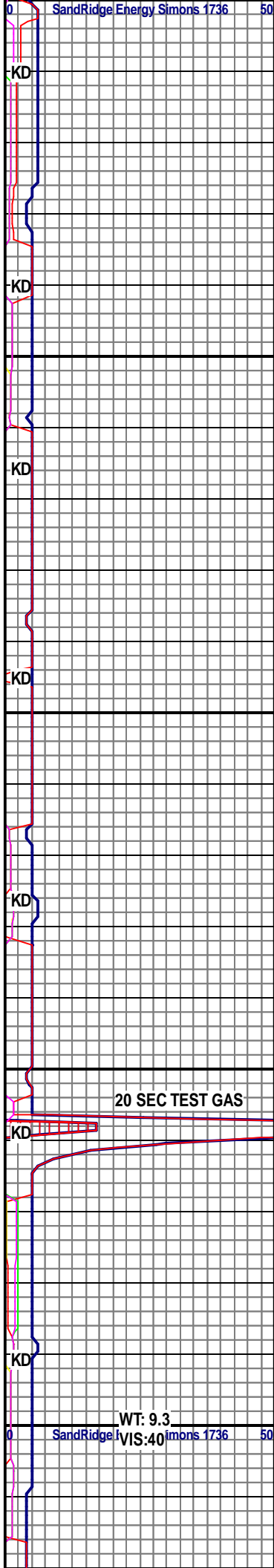
CHASE @2,830' MD (-403')

DOL: PRED OFF WHT- WHT, TR OPQ, TR SUCRO TXT, MSTLY BLKY, V FN- MICRO FN XLN, PRED FRM, OCC SLI FRI, LS: WHT- OFF WHT, SME LT GY, OCC MTTLD, BLKY- PLTY, V FN- FN XLN, MOD FRM- FRM, SLI INCRG FRM, OCC DULL YEL. MIN FLOR, NO VIS CUT, NO RESD RING, NO ODOR

SH: PRED RED BRWN, OCC DRK BRWN, TR GRY, MSTLY BLKY TO CHNKY, MSTLY SMTH TXT, OCC RGH TXT, TR SLTY, MSTLY SFT TO V SFT, OCC MOD SFT TO SLI FRM, W LS: PRED WHT TO OFF WHT, MSTLY BLKY, OCC PLTY, PRED V FN XLN, MSTLY MOD FRM TO FRM, OCC V FRM, NO VIS FLOR, NO VIS CUT, NO RES RING

SH: PRED REDISH BRWN, TR LT BRWN TO GRY, MSTLY BLKY TO CHNKY, OCC PLTY, PRED RGH TXT, OCC SMTH TXT, PRED SFT, OCC MOD SFT, W/ LS: PRED OFF WHT TO WHT, OCC LT GRY, PRED V FN TO MICRO FN XLN, MSTLY BLKY, OCC PLTY, PRED V FRM, SME SLI HRD TO HRD, W/ DOL STRINGERS SCAT THRU OUT SMPLE, NO VIS FLOR, NO VIS CUT, NO RES RING

SH: PRED REDISH BRWN, TR LT BRWN TO GRY, MSTLY BLKY TO CHNKY, OCC PLTY, PRED RGH TXT, OCC SMTH TXT, PRED SFT, OCC

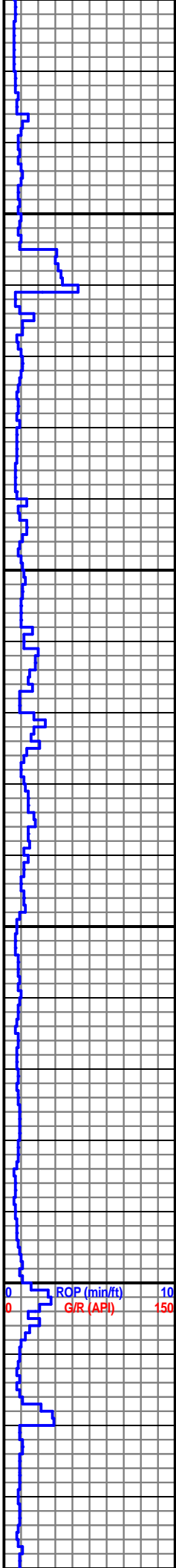


20 SEC TEST GAS

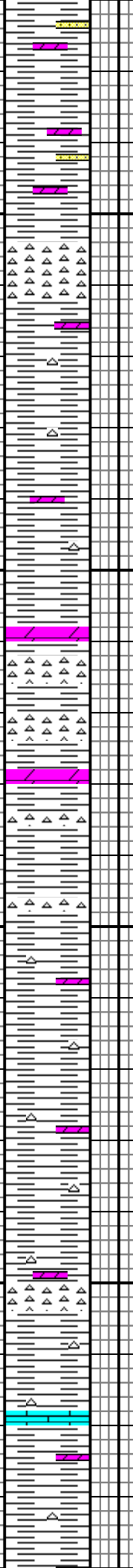
WT: 9.3

SURVEY @
3,022' = 1/2°

DEPTH: 3,100'
WOB: 10-12K
RPM: 90-100
SPM: 65
GPM: 800



3050
3100
3150
3200



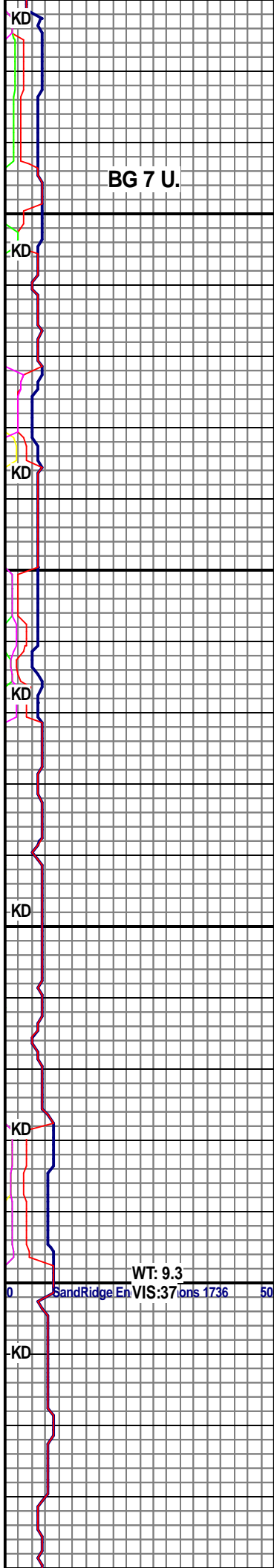
MOD SFT, W/ DOL, MSTLY WHT TO OFF WHT, OCC DRK TO LT BRWN, TR SUC DOL, MSTLY BLKY, OCC CHNKY, PRED V FN XLN, MSTLY FRM TO MOD FRM, OCC SLI HRD, W SS STRINGERS THRU OUT SMPLE, NO VIS FLOR, NO VIS CUT, NO RES RING

SH: PRED REDISH BRWN, SME BRWN, OCC LT GRY TO GRY, MSTLY SMTH TXT, OCC RGH TXT, MSTLY V SFT TO GUMMY, OCC SFT TO SLI FRM, MSTLY BULKY, OCC PLTY, W/ CHRT: PRED WHT TO OFF WHT, OCC TRNSL, MSTLY V FN XLN, PRED SUB ANG TO ANG, OCC BLKY, PRED V FRM TO HRD, OCC V HRD, NO VIS FLOR, NO VIS CUT, NO RES RING

SH: PRED BRWN, SME REDISH BRWN, TR LT GRY, MSTLY BULKY, SME CHNKY, TR PLTY, PRED SMTH TXT, OCC RGH TXT, PRED SFT TO MOD SFT, TR V SFT TO GUMMY, W/ CHRT: PRED OFF WHT, OCC WHT, TR OPQ, PRED FN XLN, OCC V FN XLN, MSTLY SUB ANG TO ANG, OCC BLKY, PRED HRD TO MOD HRD, SME V HRD, TR V FRM, W WHT DOL THRU OUT, NO VIS FLOR, NO VIS CUT, NO RES RING

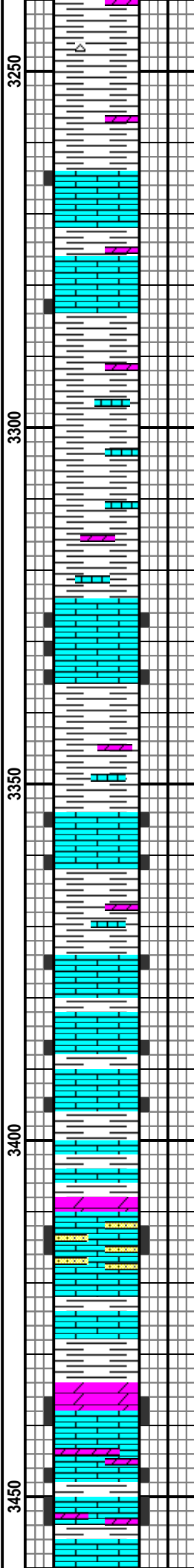
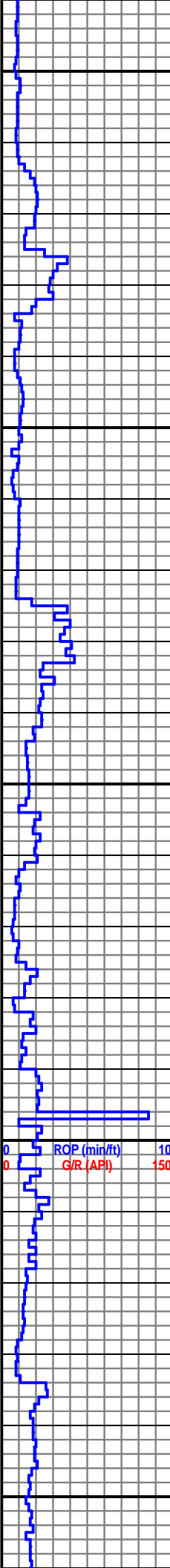
SH: PRED REDISH BRWN, SME BRWN, OCC LT GRY TO GRY, MSTLY SMTH TXT, OCC RGH TXT, MSTLY V SFT TO GUMMY, OCC SFT TO SLI FRM, MSTLY BULKY, OCC PLTY, W/ CHRT: PRED WHT TO OFF WHT, OCC TRNSL, MSTLY V FN XLN, PRED SUB ANG TO ANG, OCC BLKY, PRED V FRM TO HRD, OCC V HRD, W/ DOL STRINGERS THRU OUT, NO VIS FLOR, NO VIS CUT, NO RES RING

SH: PRED BRWN, SME REDISH BRWN, TR LT GRY, MSTLY BULKY, SME CHNKY, TR PLTY, PRED SMTH TXT TO RGH TXT, PRED SFT TO V SFT, TR GUMMY, W/ CHRT: PRED OFF WHT TO WHT, TR OPQ, PRED FN XLN, OCC V FN XLN, MSTLY SUB ANG TO ANG, OCC BLKY, PRED HRD TO MOD HRD, SME V HRD, TR V FRM, SCAT DOL THRU OUT, NO VIS FLOR, NO VIS CUT, NO RES RING



11/22/2013 @
3,242

DEPTH: 3,300 '
WOB: 10-12 K
RPM: 90
SPM: 60
GPM: 750



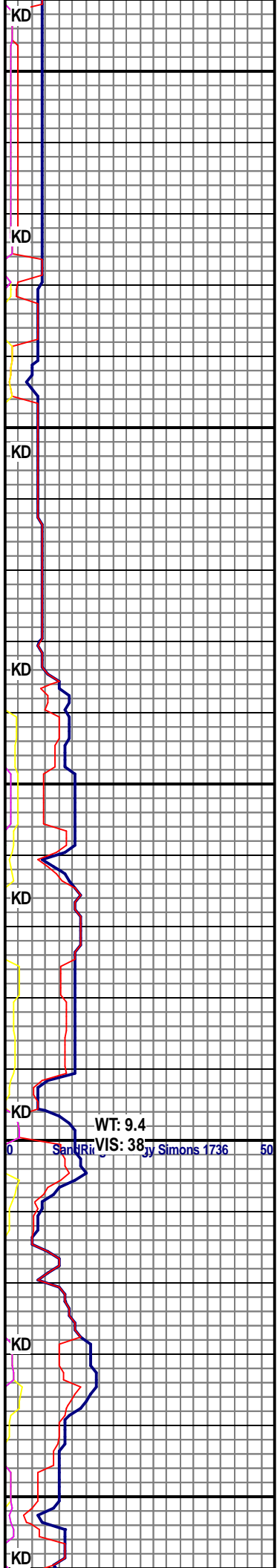
NO RES RING
SH: PRED REDISH BRWN TO BRWN, OCC LT GRY, MSTLY BLKY, OCC CHNKY, PRED V SMTH, OCC RGH, MSTLY SFT, OCC SLI FRM, W/ LS: PRED WHT TO OFF WHT, MSTLY BLKY, OCC CHNKY, V FN XLN, MSTLY V FRM TO HRD, OCC V HRD, TR PP OR, W/ SCAT BRWN SOC DOL THRU OUT, NO FLOR, NO CUT, NO RES RING

LS: PRED WHT TO OFF WHT, OCC LT GRY, MSTLY BLKY TO CHNKY, OCC SUB ANG, PRED V FN TO MICRO FN XLN, MSTLY V FRM TO HRD, OCC V HRD TO MOD HRD, OCC PP POR, W/ SH: PRED REDISH BRWN TO BRWN, MSTLY SMTH TXT, OCC RGH TXT, PRED CHNKY, OCC PLTY, MSTLY SFT TO V SFT, W SCAT DOL THRU OUT SMPLE, SCAT DUL YEL FLOR, NO CUT, NO RES RING

LS: PRED OFF WHT TO WHT, OCC LT GRY TO GRY, MSTLY BLKY, OCC CHNKY, TR PLTY, MSTLY V FN TO FN XLN, PRED HRD TO MOD HRD, SME V HRD, OCC V FRM, OCC PP POR, W/ REDISH BRWN SHELL THRU OUT, W SCAT DOL THRU OUT, SCAT DUL YEL FLOR, N/S

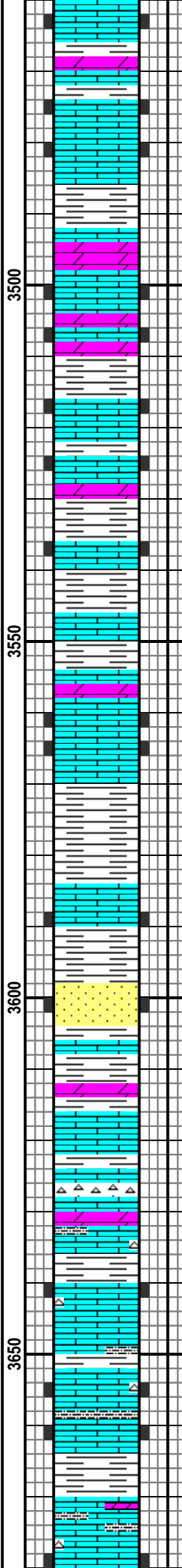
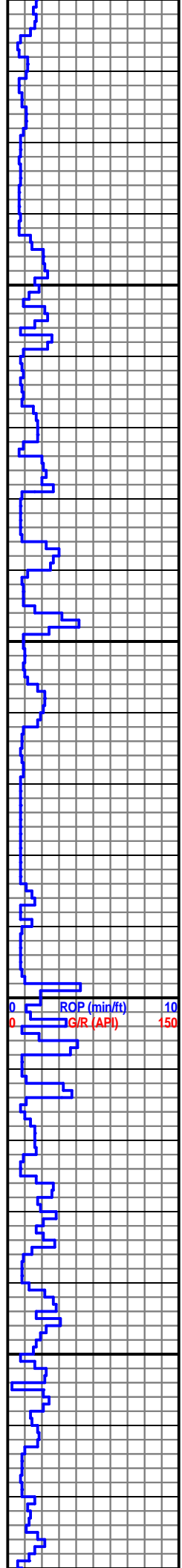
LS: MSTLY OFF WHT- WHT, SME LT GY- MED GY, BLKY, TR PLTY, FRM- MOD HD, TR MOD FRM, PRED V FN- FN XLN, TR MICRO FN XLN, PR INTRXLN POR, TR PP VUG POR, DOL: OFF WHT- LT GY, TR LT BRN, MSTLY DNSE, TR SUCRO TXT, MSTLY MOD HD, SCAT MOD FRM, V FN- MICRO FN XLN, TR PR INTRGRNLR POR, SCAT YEL- BRI YEL MIN FLOR,

LS: PRED WHT- OFF, SCAT GY



WT: 9.4
SARVIS: 38
Ri: 1736
50

DEPTH: 3,500'
 WOB: 10-12 K
 RPM: 87
 SPM: 60
 GPM: 800



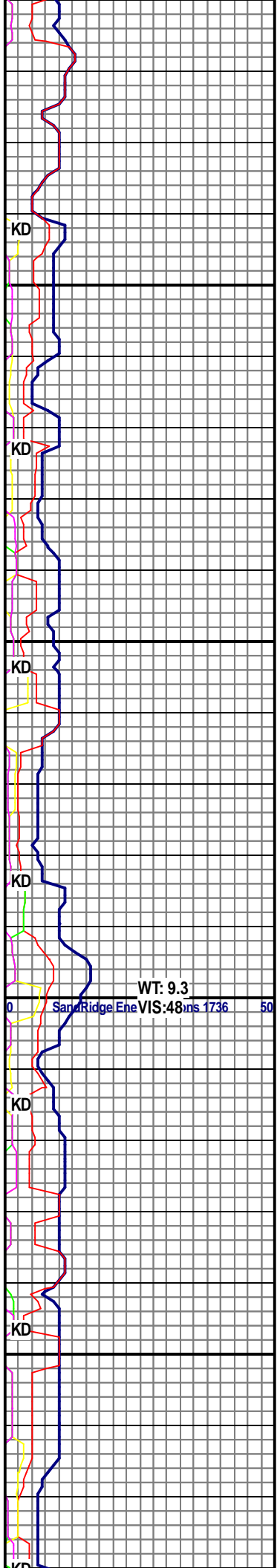
THRU OUT, MSTLY BLKY, TR PLTY,
 FRM- MOD HD, SME MOD FRM, V
 FN- FN XLN, TR PP VUG POR, DOL:
 OFF WHT- LT GY, SME LT BRN,
 MSTLY DNSE, TR SUCRO TXT,
 BLKY, MOD HD- MOD FRM, V FN-
 MICRO FN XLN, TR V PR
 INTRGRNLR POR, SCAT YEL MIN
 FLOR, NO VIS CUT, NO RESD
 RING, NO ODOR

LS: PRED OFF WHT- WHT, SCAT LT
 GY THRU OUT, BLKY- PLTY, FRM-
 MOD HD, SCAT MOD FRM, V FN- FN
 XLN, TR MICRO FN XLN, SH:
 RED/BRN, SCAT GY THRU OUT,
 BLKY- PLTY, MOD FRM- MOD SFT,
 TR FRM, MSTLY FN- V FN SLTY
 TXT, SCAT MOD SMTH, SME YEL-
 BRI YEL MIN FLOR, NO VIS CUT,
 NO RESD RING, NO ODOR

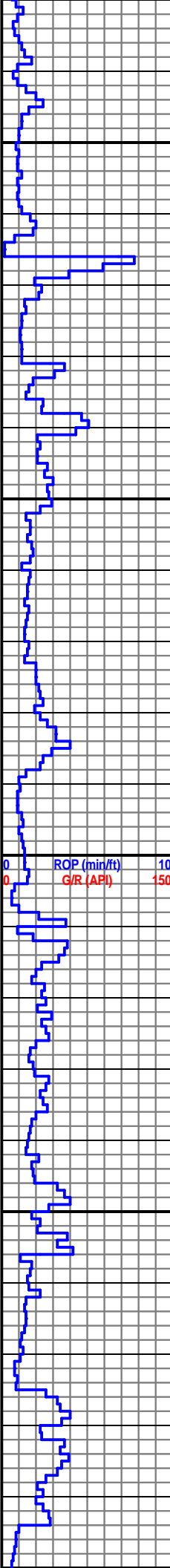
LS: PRED OFF WHT- LT GY, SCAT
 WHT THRU OUT, BLKY- PLTY, SLI
 INCRG PLTY, FRM- MOD HD, OCC
 MOD FRM, V FN- FN XLN, TR PP
 VUG POR, SH: PRED GY, SCAT
 RED/BRN, BLKY, MOD FRM- MOD
 SFT, MOD RGH SLTY TXT- MOD
 SMTH TXT, SME YEL- BRI YEL MIN
 FLOR, NOP VIS CUT, NO RESD
 RING, NO ODOR

LS: MSTLY OFF WHT- WHT, ABUND
 LT GY, PLTY- BLKY, FRM- MOD HD,
 DCRG MOD HD, V FN- FN XLN, TR
 MICRO FN XLN, TR PP VUG POR,
 SH: PRED LT GY- MED GY, SCAT
 RED/ BRN, BLKY, TR PLTY, MOD
 FRM- MOD SFT, MOD SMTH- MOD
 RGH SLTY TXT, TR YEL- BRI YEL
 MIN FLOR, NS

LS: PRED OFF WHT- WHT, SCAT LT
 GY THRU OUT, OCC MTTLD, PLTY-
 BLKY, FRM- MOD FRM, ABUND
 MOD HD, V FN- FN XLN, TR MICRO
 FN XLN, TR PP VUG POR, TR HL
 FRAC POR, CHT: WHT- OFF WHT,
 OCC LT BRN, TR OPQ, DNSE, ANG-
 V ANG, V HD- HD, DOL: LT TAN-
 OFF WHT, DNSE, BLKY, MOD HD-



DEPTH: '
WOB: K
RPM:
SPM:
GPM:



3700

3750

3800

3850

00



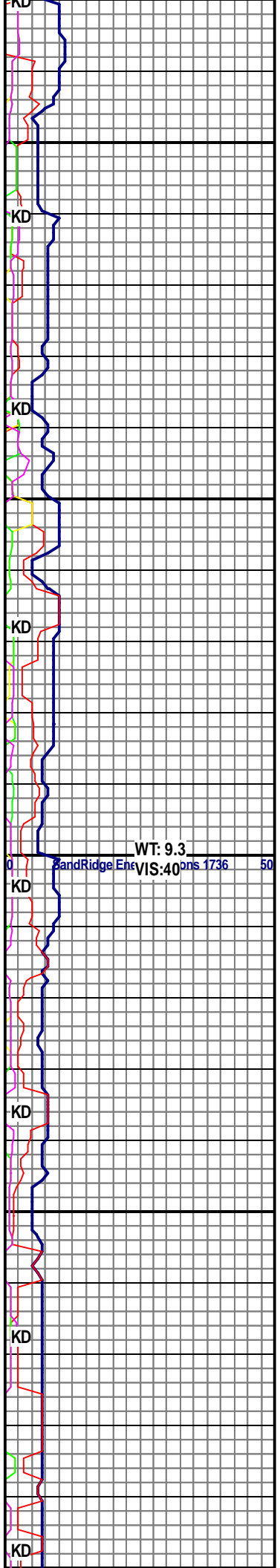
FRM, TR MOD HD, TR DULL YEL-
YEL MIN FLOR, SME MICRO MICA,
NO VIS CUT, NO RESD RING, NO
ODOR

LS: OFF WHT- LT TAN, SCAT WHT
THRU OUT, SME LT GY, PLTY-
BLKY, INCRG BLKY, FRM- MOD
FRM, INCRG MOD FRM, OCC MOD
HD, V FN- FN XLN, TR PP VUG
POR, SH: MED GY- LT GY, OCC
RED/ BRN, BLKY, MOD FRM- MOD
SFT, TR FRM, MOD SMTH- MOD
RGH SLTY TXT, OCC DULL YEL-
YEL MIN FLOR, NO VIS CUT, NO
RESD RING, NO ODOR

LS: OFF WHT- LT TAN, SCAT WHT
THRU OUT, SME LT GY, PLTY-
BLKY, INCRG BLKY, FRM- MOD
FRM, INCRG MOD FRM, OCC MOD
HD, V FN- FN XLN, TR PP VUG
POR, SH: MED GY- LT GY, OCC
RED/ BRN, BLKY, MOD FRM- MOD
SFT, TR FRM, MOD SMTH- MOD
RGH SLTY TXT, OCC DULL YEL-
YEL MIN FLOR, NO VIS CUT, NO
RESD RING, NO ODOR

LS: PRED OFF WHT, SME WHT,
OCC TAN, SCAT GRY THRU OUT,
PRED BLKY TO PLTY, OCC CHNKY,
MSTLY V FN TO MICRO FN XLN,
PRED V FRM TO HRD, OCC V HRD,
TR PP POR, TR OF INTERXLN POR,
W/ SH: PRED LT GRY TO GRY, OCC
MED GRY, MSTLY BLKY, OCC
CHNKY, PRED SMTH TO MED RGH
TXT, MSTLY SFT, OCC SLI FRM,
SCAT DOL THRU OUT, SCAT DUL
YEL FLOR, NO CUT, NO RES RING

LS: PRED WHT TO OFF WHT, OCC
CRM, TR OF LT GRY, MSTLY BLKY,
OCC CHNKY TO PLTY, MSTLY V FN
XLN, OCC FN XLN, PRED HRD,
OCC MOD HRD TO V HRD, TR HL
FRAC POR, TR INTERXLN POR, W/
SH: PRED MED GRY TO GRY, OCC
LT GRY, MSTLY SMTH, OCC RGH,
PRED SFT TO SLI FRM, OCC FRM,
PRED BLKY TO CHNKY, SCAT DUL
YEL FLOR, NO VIS CUT, NO RES
RING

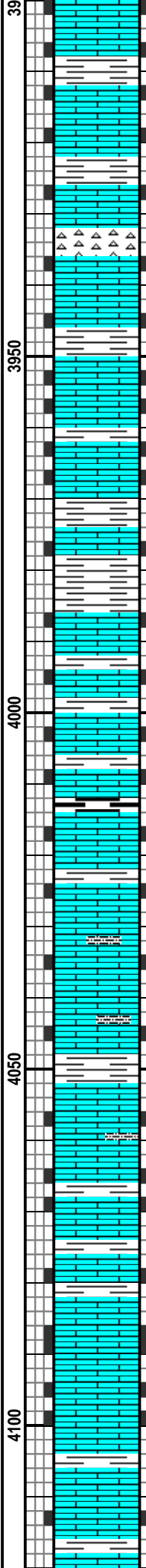
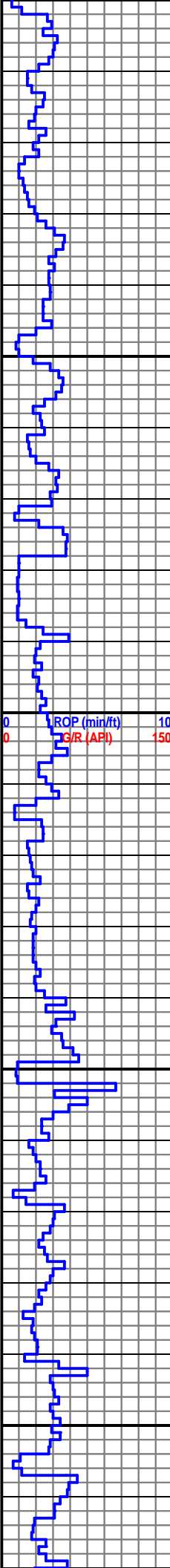


WT: 9.3
VIS: 40

DEPTH: 3,900'
WOB: 10 K

RPM: 90
SPM: 65
GPM:800

11/23/2013 @
3,957'



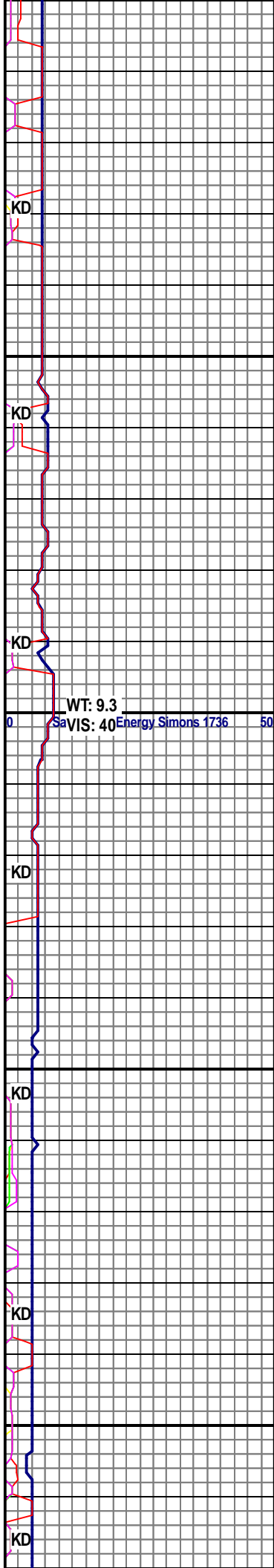
LS: PRED OFF WHT, SME WHT, OCC TAN, SCAT GRY THRU OUT, PRED BLKY TO PLTY, OCC CHNKY, MSTLY V FN TO MICRO FN XLN, PRED V FRM TO HRD, OCC V HRD, TR PP POR, TR OF INTERXLN POR, W/ SH: PRED LT GRY TO GRY, OCC MED GRY, MSTLY BLKY, OCC CHNKY, PRED SMTH TO MED RGH TXT, MSTLY SFT, OCC SLI FRM, SCAT DUL YEL FLOR, NO CUT, NO RES RING

LS: PRED LT TAN TO TAN, OCC CRM, OCC WHT, MSTLY CHNKY TO BLKY, OCC PLTY, PRED MICRO FN TO V FN XLN, PRED V FRM TO HRD, OCC MOD HRD TO V HRD, TR SLI FRM, TR PP POR, W/ SH: PRED LT GRY TO OFF GRY, TR BRWN, PRED SMTH TXT, OCC RGH, MSTLY BLKY TO CHNKY, PRED SFT TO MOD SFT, OCC SLI FRM, SCAT DUL YEL FLOR, NO CUT, NO RES RING

**HEEBNER @ 4,016'
(-783')**

LS: PRED OFF WHT, SME WHT, OCC TAN, SCAT GRY THRU OUT, PRED BLKY TO PLTY, OCC CHNKY, MSTLY V FN TO MICRO FN XLN, PRED V FRM TO HRD, OCC V HRD, TR PP POR, TR OF INTERXLN POR, W/ SH: PRED LT GRY TO GRY, OCC MED GRY, MSTLY BLKY, OCC CHNKY, PRED SMTH TO MED RGH TXT, MSTLY SFT, OCC SLI FRM, SCAT DUL YEL FLOR, NO CUT, NO RES RING

LS: MSTLY OFF WHT- LT TAN, SCAT WHT THRU OUT, SME GY, BLKY- PLTY, INCRG PLTY, MOD FRM- MOD SFT, SCAT CHLKY, V FN- MICRO FN XLN, OCC BRECH, TR HL FRAC POR, SH: PRED GY, BLKY, MOD SFT- MOD FRM, MOD SMTH- MOD



DEPTH: 4,100'
WOB: 10 K
RPM: 90
SPM: 65
GPM:800

RGH TXT, SME SLTY, SCAT DULL
YEL MIN FLOR, NO VIS CUT, NO
RESD RING, NO ODOR

LS: PRED OFF WHT- LT TAN, SCAT
WHT, OCC GY, MSTLY BLKY, SCAT
PLTY THRU OUT, MOD FRM- MOD
SFT, ABUND CHLKY, V FN- MICRO
FN XLN, OCC BRECH, TR HL FRAC
POR, SH: PRED GY, BLKY, MOD
SFT- MOD FRM, MOD SMTH- MOD
RGH TXT, SME SLTY, SCAT DULL
YEL MIN FLOR, NS

LS: PRED OFF WHT- WHT SCAT LT
TAN THRU OUT, OCC MITLD GY,
MOD FRM- MOD SFT, SCAT CHLKY,
V FN- MICRO FN XLN, OCC BRECH,
TR HL FRAC POR, SH: MED GY- LT
GY, OCC DRK GY, TR RED/ BRN,
PLTY- BLKY, MOD SFT- MOD FRM,
MOD SMTH TXT, TR SLTY, TR
MICRO EMBD PYR, DULL YEL MIN
FLOR, NO VIS CUT, NO RESD
RING, NO ODOR

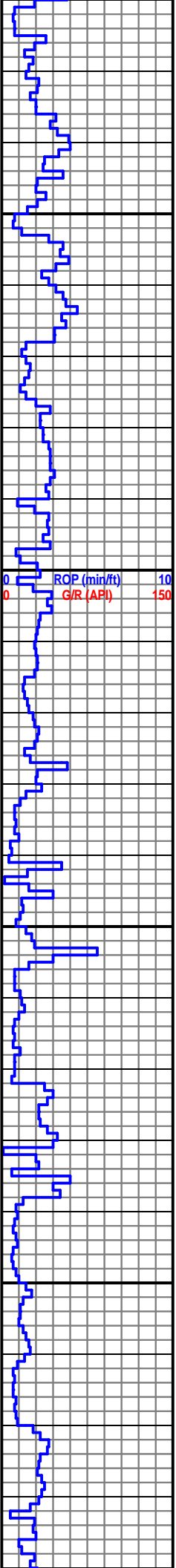
LS: OFF WHT- WHT, SCAT LT TAN,
SME LT GY, MOD FRM- FRM, SCAT
CHLKY THRU OUT, MICRO FN- V FN
XLN, SME BRECH, TR HL FRAC
POR, SCAT YEL- DULL YEL MIN
FLOR, NO VIS CUT, NO RESD
RING, NO ODOR

LS: PRED OFF WHT- LT TAN, SCAT
WHT, OCC GY, MSTLY BLKY, SCAT
PLTY THRU OUT, MOD FRM- MOD
SFT, ABUND CHLKY, V FN- MICRO
FN XLN, OCC BRECH, TR HL FRAC
POR, SH: PRED GY, BLKY, MOD
SFT- MOD FRM, MOD SMTH- MOD
RGH TXT, SME SLTY, SCAT DULL
YEL MIN FLOR, NO CUT, NO RES
RING

MUD @: 4,162'
MW: 9.5
FV: 39
PV: 14
YP: 11
GEL: 6/11
SOL: 6.0%
H2O: 94.0%
PH: 11.9
CHL: 28,000
CALC: 640

WT: 9.3
VIS: 41

SardRidge Energy Simons 1736 50



4150

4200

4250

4300

KD

KD

KD

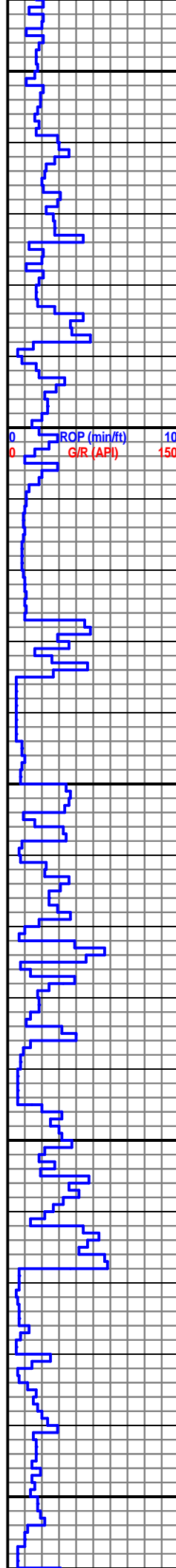
KD

KD

KD

KD

DEPTH: 4,300'
WOB: 10-11 K
RPM: 89
SPM: 65
GPM: 850



4350
4400
4450
4500
4550

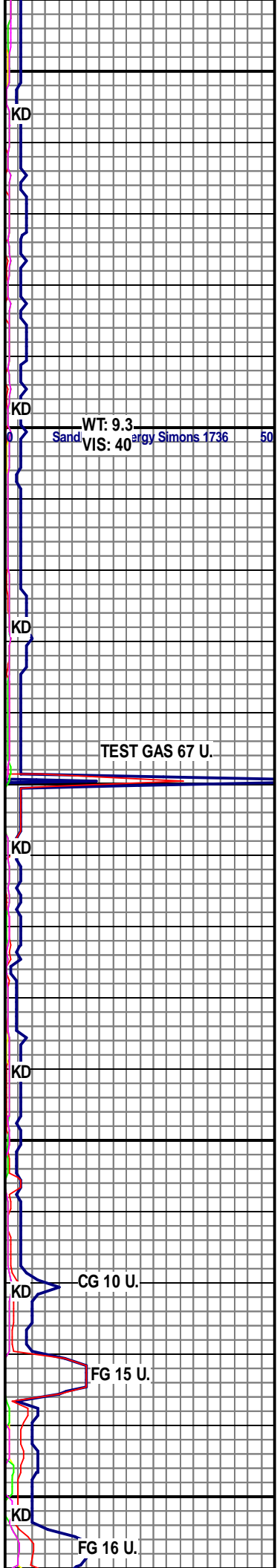
LS: PRED OFF WHT TO LT TAN, TR GRY, PRED BLKY TO CHKNY, OCC PLTY, MSTLY V FRM TO HRD, MOD HRD TO HRD, PRED V FN TO MICRO FN XLN, TR HL FRAC POR THRU OUT, W/ SH: PRED GRY, TR BLKY CRB SH, MSTLY BLKY, OCC CHKNY, PRED MOD SFT TO SLI FRM, TR SFT, MSTLY SMTH TO SLI RGH, SCAT DUL YEL FLOR, NO CUT, NO RES RING

LS: PRED OFF WHT TO LT TAN, TR GRY, PRED BLKY TO CHKNY, OCC PLTY, MSTLY V FRM TO HRD, MOD HRD TO HRD, PRED V FN TO MICRO FN XLN, TR HL FRAC POR THRU OUT, W/ SH: PRED GRY, TR BLKY CRB SH, MSTLY BLKY, OCC CHKNY, PRED MOD SFT TO SLI FRM, TR SFT, MSTLY SMTH TO SLI RGH, SCAT DUL YEL FLOR, NO CUT, NO RES RING

MARMATON @ 4,472' (-1,239')

LS: PRED LT TAN TO TAN, OCC CRM, TR OFF WHT, MSTLY BLKY, OCC CHKNY, PRED V FN XLN, OCC MICRO FN XLN, MSTLY V FRM TO HRD, OCC MOD HRD TO HRD, FRM TO MOD FRM, OCC HL FRAC POR, W/ SH: PRED LT GRY TO GRY, MSTLY SMTH TXT, OCC RGH, PRED BLKY, OCC PLTY, MSTLY SFT TO SLI FRM, OCC DUL YEL FLOR, NO VIS CUT, NO RES RING

LS: PRED TAN TO LT TAN, OCC CRM, MSTLY CHKNY, OCC BLKY, TR PLTY, MSTLY FN TO V FN XLN, OCC MICRO FN XLN, PRED V FRM, OCC FRM, OCC HRD, MSLTY HL FRAC POR, TR PP POR, W/SH:



DEPTH: 4,500 '
WOB: 16 K
RPM: 95
SPM: 65
GPM: 800

11/24/2013 @ 4,555'

PRED LT GRY TO GRY, TR BLK
CRB SH, MSTLY BLKY, OCC PLTY,
PRED RGH, OCC SMTH, MSTLY
SFT, OCC V SFT, SCAT DUL YEL
FLOR, NO VIS CUT, NO RES RING

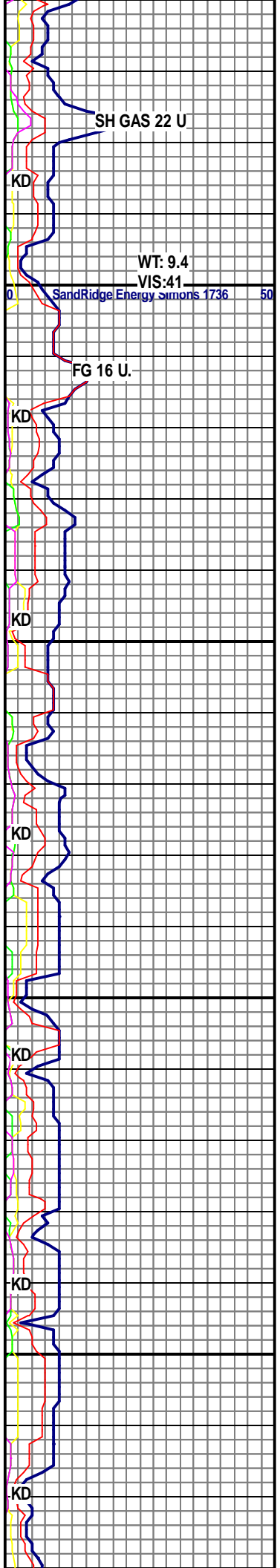
**CHEROKEE @ 4,582'
(-1,349')**

LS: PRED LT TAN TO TAN, OCC
CRM, TR GRY, MSTLY BLKY TO
CHNKY, PRED V FN XLN TO MICRO
FN XLN, MSTLY V FRM TO HRD,
OCC MOD HRD TO HRD, FRM TO
MOD FRM, OCC HL FRAC POR, W/
SH: PRED LT GRY TO GRY, MSTLY
SMTH TXT, OCC RGH, PRED BLKY,
OCC PLTY, MSTLY SFT TO SLI
FRM, OCC DUL YEL FLOR, NO VIS
CUT, NO RES RING

LS: PRED LT TAN TO OFF TAN,
OCC CRM, MSTLY V FN TO MICRO
FN XLN, OCC FN XLN, PRED BLKY,
OCC CHNKY, MSTLY V FRM TO
HRD, OCC MOD FRM, OCC HL
FRAC POR THRU OUT, W/ SH SCAT
THRU OUT SMPLE, SCAT DUL YEL
FLOR, NO VIS CUT, NO RES RING

LS: PRED OFF WHT- LT GY, SCAT
LT TAN, SME WHT, TR OOL TXT,
BLKY, TR PLTY, FRM- MOD FRM, TR
MOD HD, MICRO FN- V FN XLN, TR
HL FRAC POR, PR INTRXLN POR,
SH: MSTLY DK GY- MED GY, SME
LT GY, BLKY, MOD SFT- MOD FRM,
MOD RGH SLTY TXT, OCC MOD
SMTH, SCAT BRI YEL- YEL FLOR,
NO VIS CUT, NO RISD RING

SH: MSTLY GY, OCC V DRK GY. TR
RED/ BRN, PRED BLKY, TR PLTY,
MOD FRM- MOD SFT, TR FRM, MOD
RGH SLTY TXT, TR MOD SMTH TXT,
TR LS: OFF WHT- LT GY, FNT TR
OOL BLKY, MOD FRM, FRM



DEPTH: 4,700'
WOB: 12 K
RPM: 92
SPM: 65
GPM: 855

OOL, BLKY, MOD FRM- FRM,
MICRO FN- V FN XLN, TR DULL YEL
MIN FLOR, NO VIS CUT, NO RESD
RING, NO ODOR

Sand WT: 9.3
VIS: 44
gy Simons 1736 50

SH: MED- DRK GY, SCAT LT GY, TR
RED/BRN, PRED BLKY, TR PLTY,
MOD FRM- MOD SFT, DCRG TR
FRM, MSTLY MOD RGH SLTY TXT,
TR MOD SMTH TXT, LS: OFF WHT-
LT GY, TR LT TAN, BLKY, MOD FRM-
CHLKY, TR FRM, MICRO FN- V FN
XLN, SME BRECH, SCAT YEL- BRI
YEL MIN FLOR, N/S

MUD @: 4,838'
MW: 9.3
FV: 44
PV: 14
YP: 8
GEL: 6/12
SOL: 6.0%
H2O: 94.0%
PH: 11.7
CHL: 18,000
CALC: 120

**MISSISSIPPIAN/ ST
GENEVIEVE @ 4,840' MD
(-1,607')**

LS: PRED OFF WHT- LT TAN, SCAT
WHT, SME LT GY, BLKY, TR PLTY,
FRM- MOD FRM, SCAT MOD HD
THRU OUT, V FN- MICRO FN XLN,
OCC SILIC, TR HL FRAC POR, CHT:
MSTLY OFF WHT- OPQ, TR BRN, V
ANG, SME ANG, V HD- HD, TR V
HD- BRIT, V FNT TR HC STN, INCRG
SCAT DULL YEL- YEL MIN FLOR,
NO VIS CUT, FNT WHT RESD RING

**ST LOUIS @ 4,896' MD
(-1,663')**

LS: PRED CRM- LT TAN, SCAT WHT
THRU OUT, OCC MTTLD, OCC OOL,
BLKY, MOD FRM- CHLKY, ABUND
FRM, MICRO FN- V FN XLN, TR HL
FRAC POR, PR INTRXLN POR,
SCAT DULL YEL- YEL MIN FLOR,
NO VIS CUT, NO RESD RING, NO
ODOR

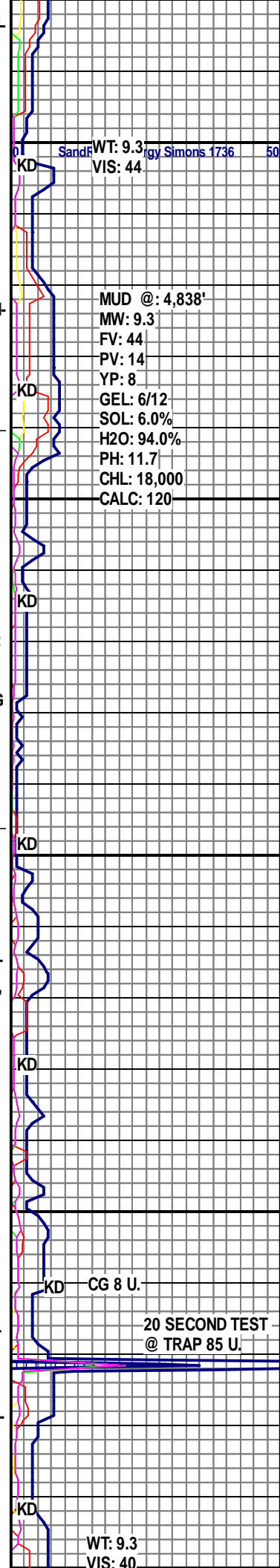
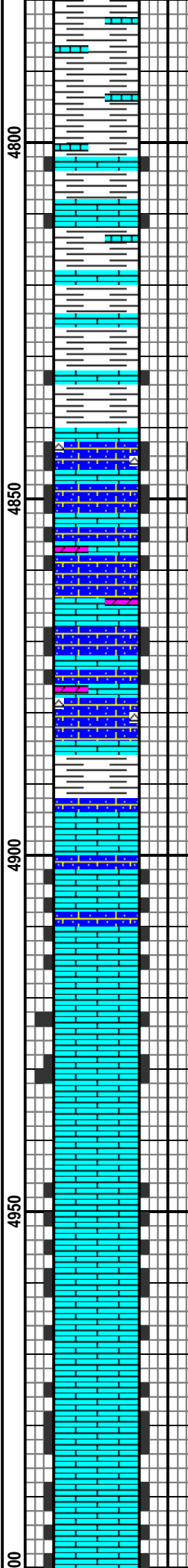
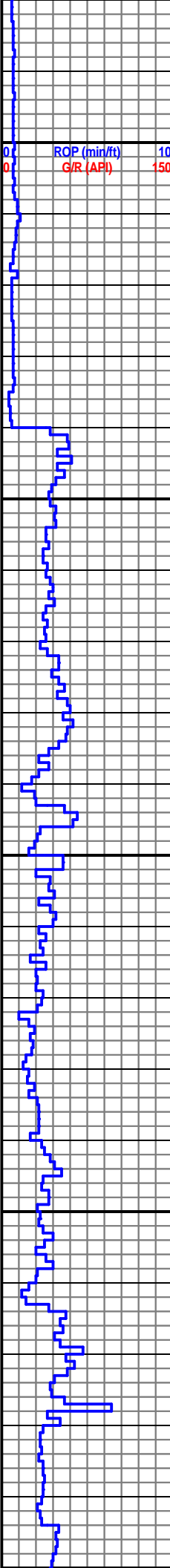
LS: MSTLY CRM- WHT, SCAT LT
TAN THRU OUT, SME MTTLD, SCAT
OOL TXT, TR FREE OIDS, MOD
FRM- MOD SFT, ABUND CHLKY,
MICRO FN- V FN XLN, TR HL FRAC
POR, PR INTRXLN POR, SCAT YEL-
DULL YEL MIN FLOR, NO VIS CUT,
NO RES RING, NO ODOR

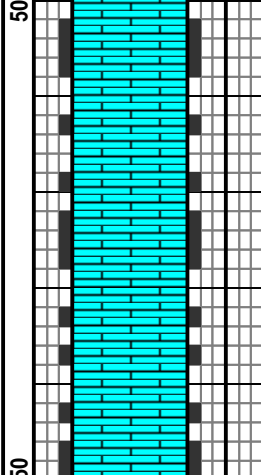
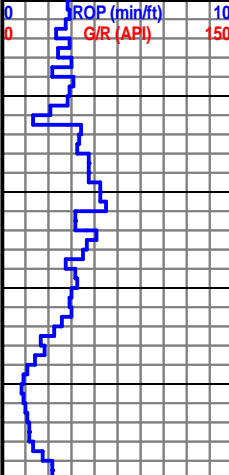
KD CG 8 U.

20 SECOND TEST
@ TRAP 85 U.

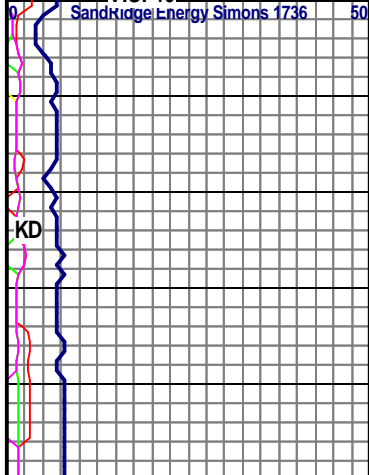
WT: 9.3
VIS: 40

DEPTH: 4,900'
WOB: 11-13 K
RPM: 89
SPM: 65
GPM: 855





LS: PRED OFF WHT TO CRM, SCAT
 LT TAN TO TAN THRU OUT, MSTLY
 V FN XLN, OCC MICRO FN XLN,
 SCAT FREE OIDS, PRED MOD FRM
 TO FRM, OCC SLI FRM TO SFT,
 MSTLY CHNKY, OCC BLKY, TR HL
 FRAC POR, TR INTERXLN POR,
 SCAT DUL YEL FLOR, NO VIS CUT,
 NO RES RING, NO ODOR



ROP
 SCALE
 0-10

5050
 50
 00

T.D. @ 5,050' ON
 11/214/2013

GAS
 SCALE 0 -50

SANDRIDGE ENERGY
 INC
 SIMONS 1736 1-12, SEC.
 12, T17S, R36W, WICHITA
 CO., KS

3,221' GL 3,233' KB