



Pioneer Energy Services

Sonic Cement
Bond Log

15-109-21218-00-00

Company Shakespeare Oil Company, LLC.
Well Campbell No. 3-17
Field Wildcat
County Logan State Kansas

Location

1855' FSL & 1726' FEL

Sec: 17 Twp: 13S Rge: 32W

Other Services
Perforate

Permanent Datum Ground Level Elevation 3029
Log Measured From Kelly Bushing 10 Ft. Above Perm. Datum
Drilling Measured From Kelly Bushing

Elevation
K.B. 3039
D.F. 3037
G.L. 3029

Run Number	One	
Date Survey	12/16/2013	
Date Cementing	11/25/2013	
Type Cementing Operation	Primary	
Depth Driller	4715	
Depth Logger	4605	
Logged Interval	4603 to 3100	to
Casing Driller	5.5 @ T.D.	@
Float Collar -- D.V. Tool	2478	
Squeeze Depth		
Amount & Type Cement		
Amount & Type Admix		
Type Fluid In Hole	Water	
Fluid Level	230	
Salinity PPM CL		
Weight lb/gal -- Vis.		
Approx. Logged Cement Top	3270	
Calculated Cement Top		
Max. Hole Temperature	109	
Tool No.	D-1	
Spacing Recorded	3-5	
Equipment -- Location	72 Hays	
Recorded By	K. Ladrigan	
Witnessed By	Tom Larson	

<<< Fold Here >>>

All interpretations are opinions based on inferences from electrical or other measurements and we cannot and do not guarantee the accuracy or correctness of any interpretation, and we shall not, except in the case of gross or willful negligence on our part, be liable or responsible for any loss, costs, damages, or expenses incurred or sustained by anyone resulting from any interpretation made by any of our officers, agents or employees. These interpretations are also subject to our general terms and conditions set out in our current Price Schedule.

Comments

Thank you for using Pioneer Energy Services, Inc. 785.625.3858

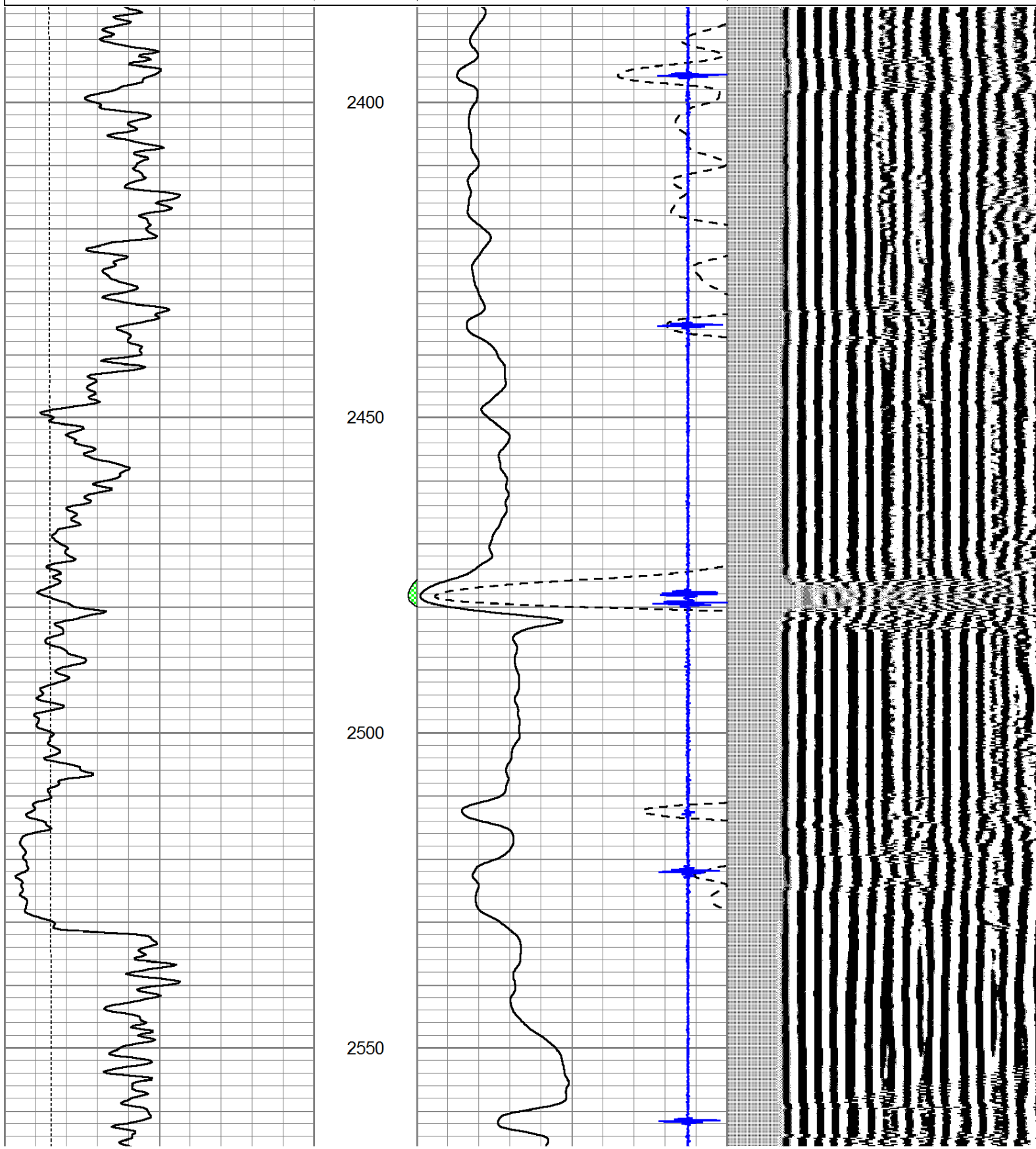
Oakley, KS., South on HWY 83 to Quail Road, 2 West, ¾ South West and North Into.

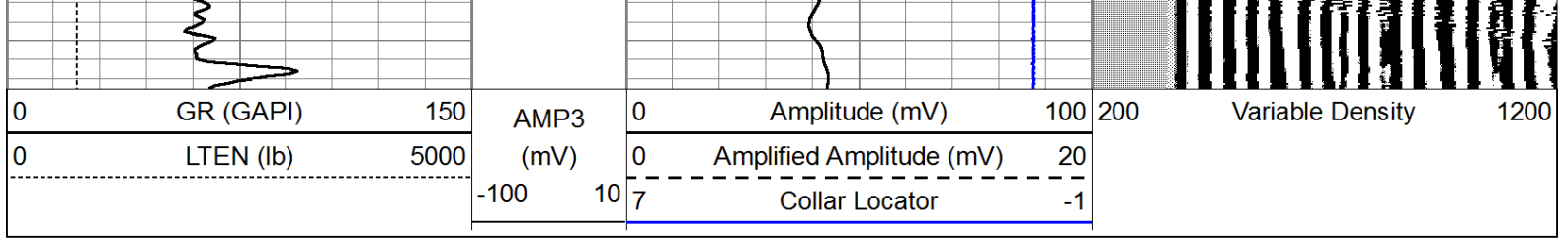


Port Collar @ 2478

Database File: shake_campbell3-27_cbl.db
 Dataset Pathname: grcbl/pass4
 Presentation Format: cbl dig
 Dataset Creation: Mon Dec 16 11:03:35 2013 by Log SCH 111116
 Charted by: Depth in Feet scaled 1:240

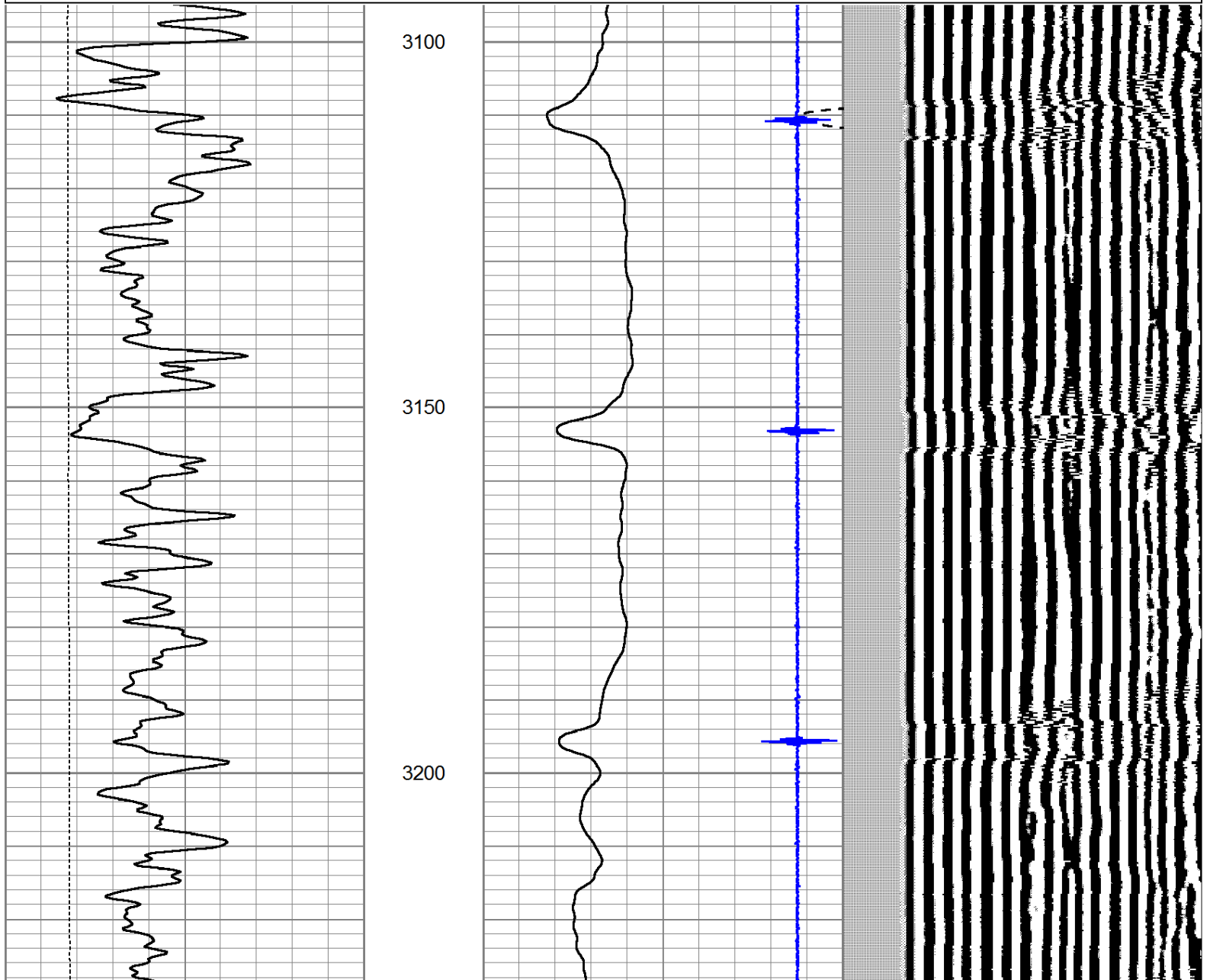
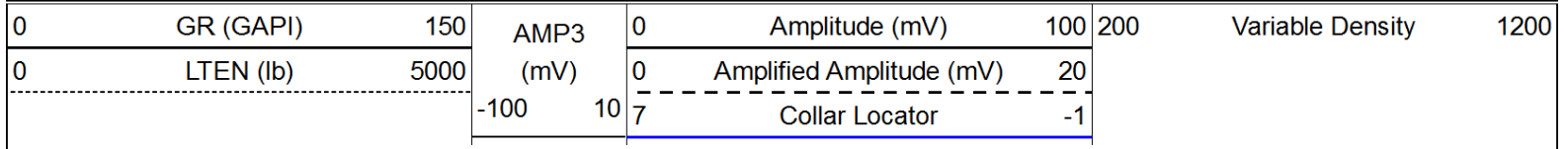
0	GR (GAPI)	150	AMP3	0	Amplitude (mV)	100	200	Variable Density	1200
0	LTEN (lb)	5000	(mV)	0	Amplified Amplitude (mV)	20			
			-100 10	7	Collar Locator	-1			

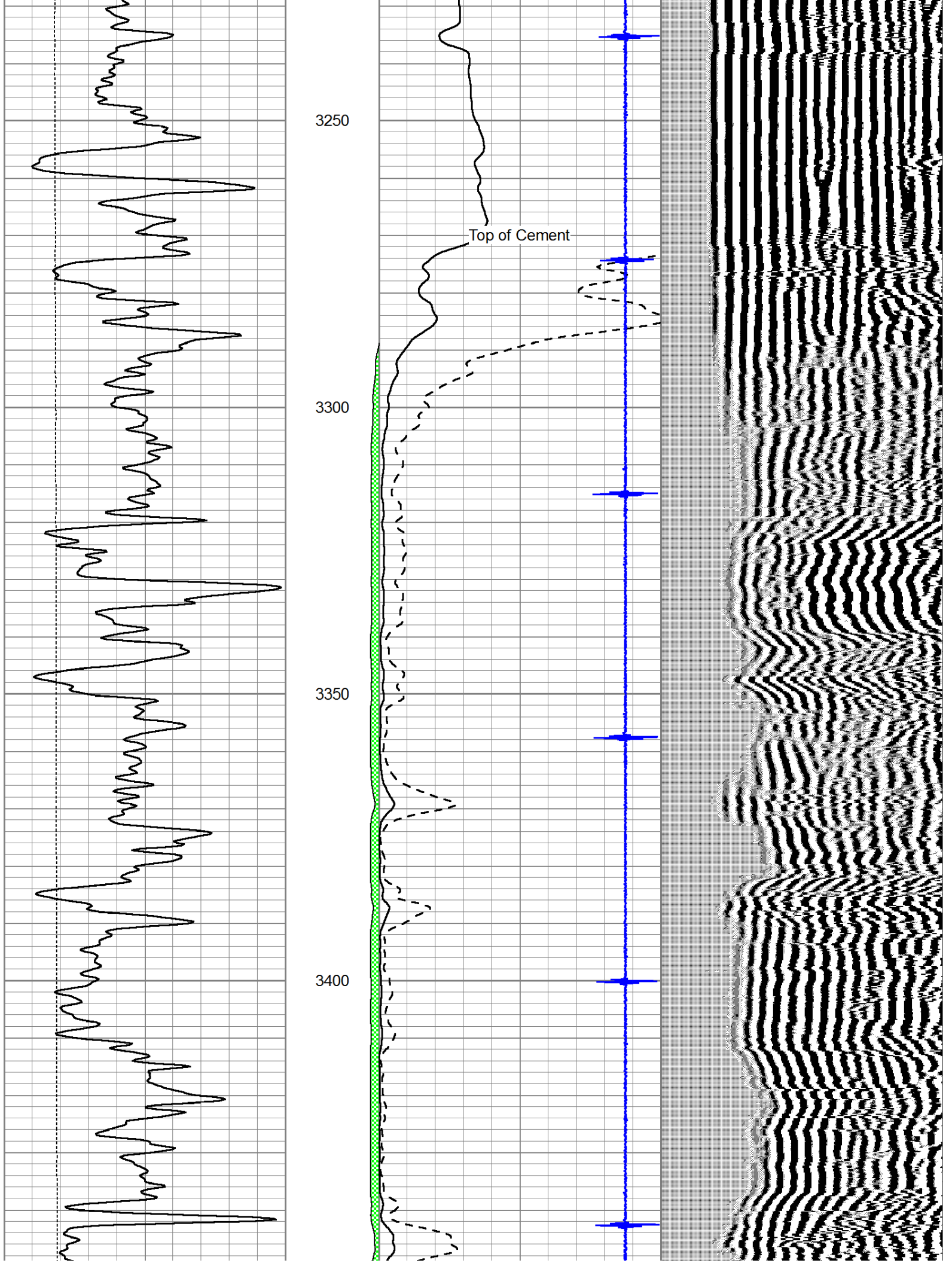


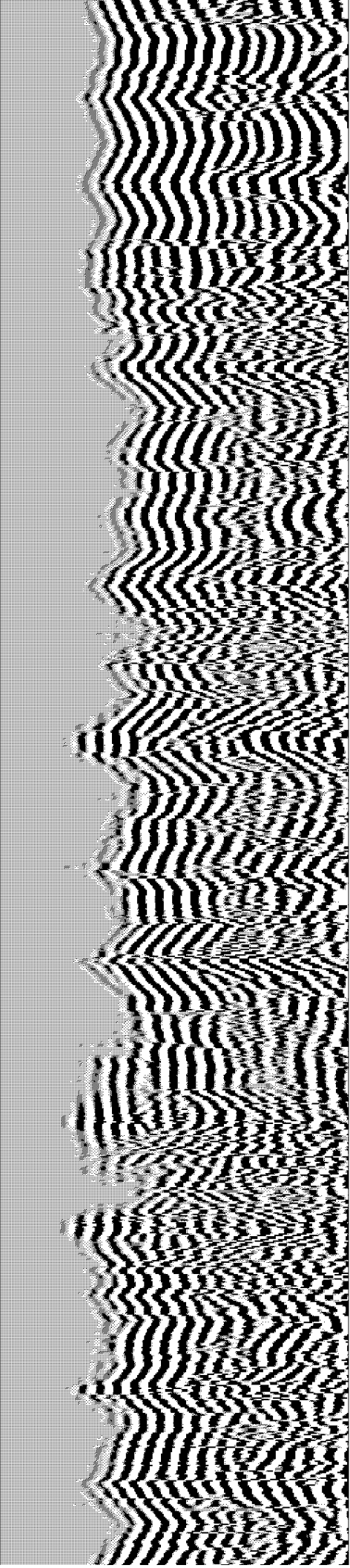
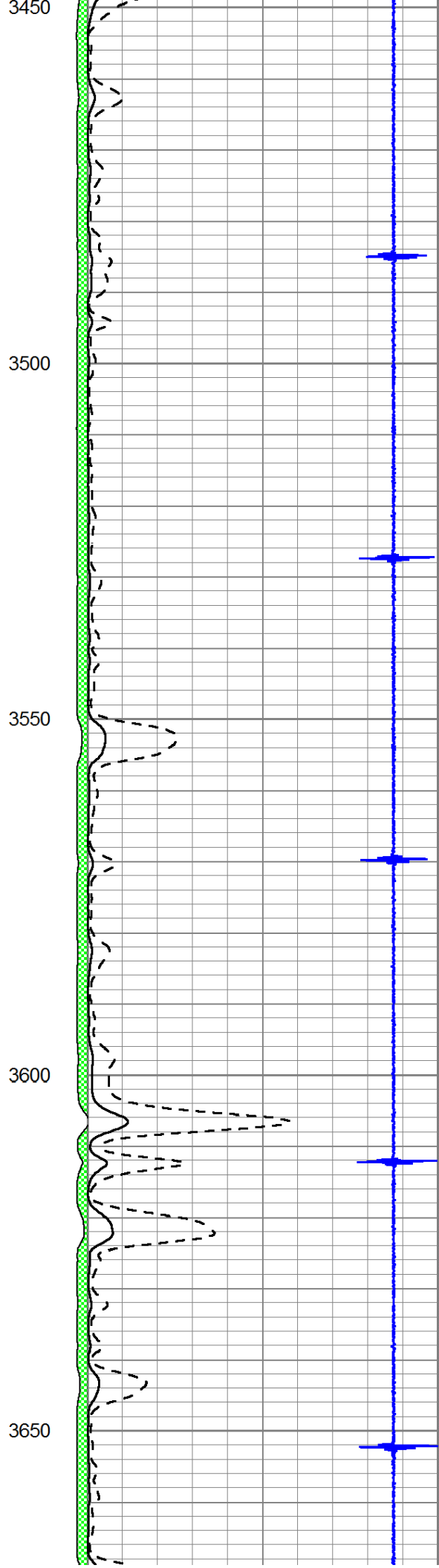
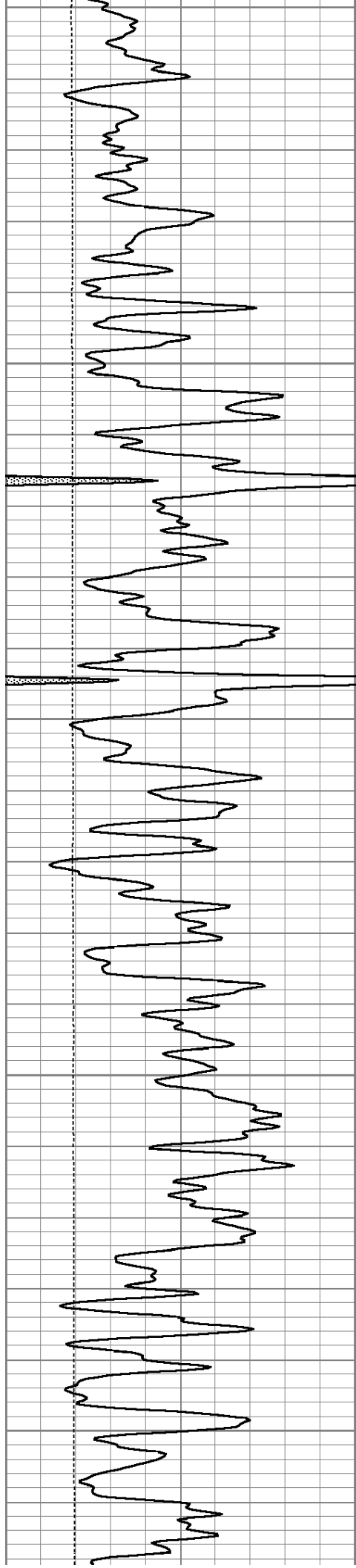


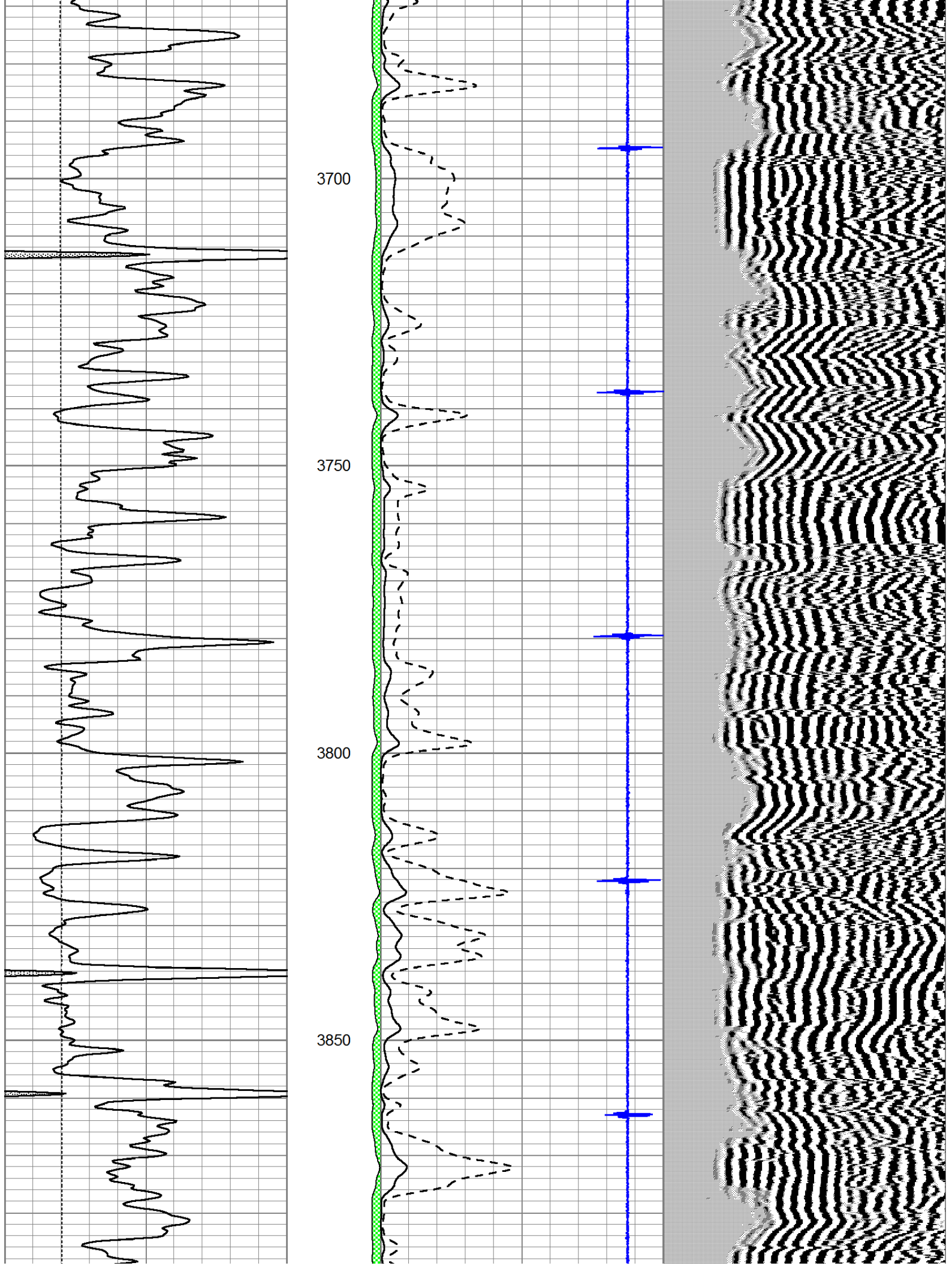
Main Pass

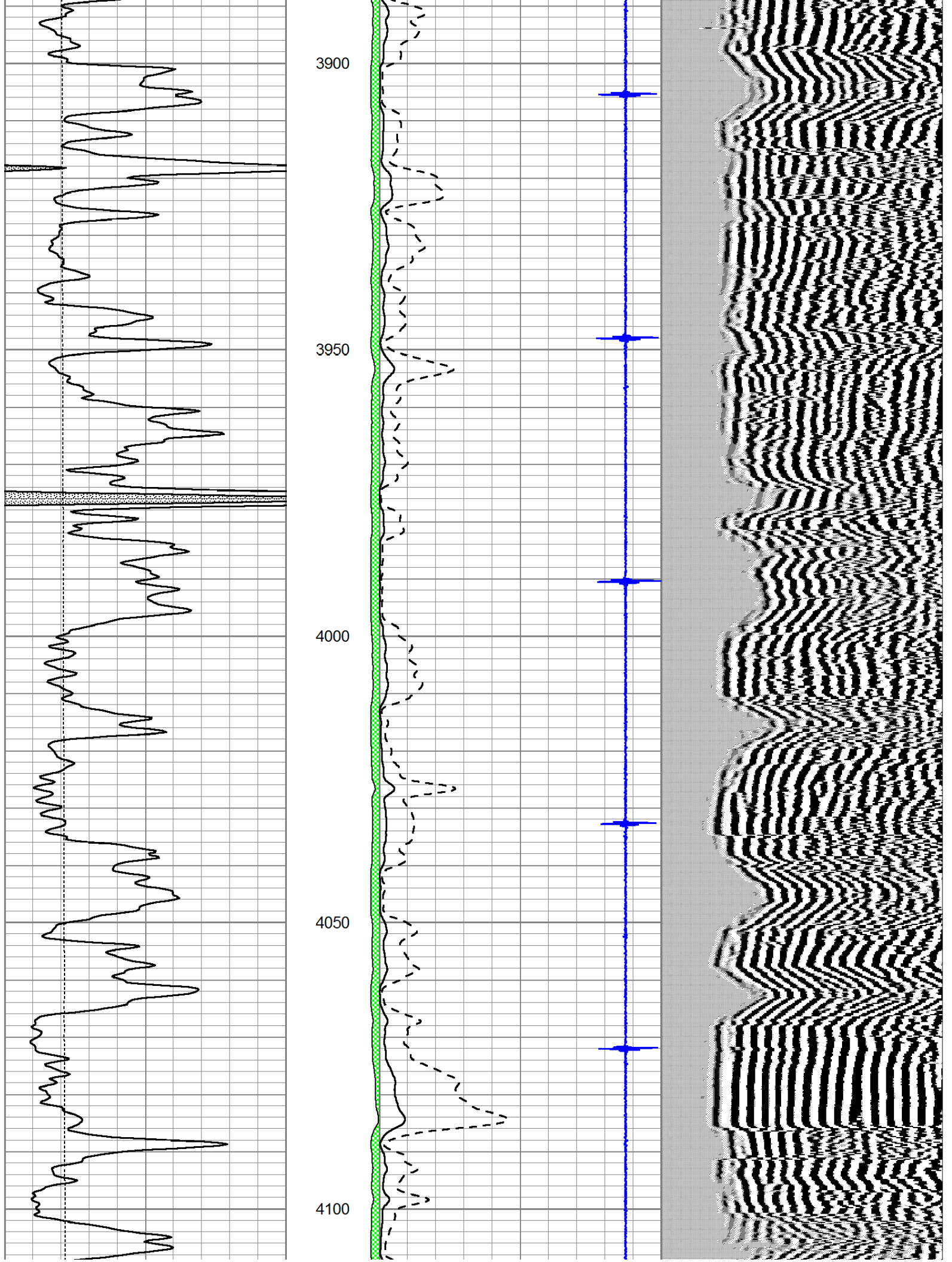
Database File: shake_campbell3-27_cbl.db
 Dataset Pathname: grcbl/pass3
 Presentation Format: cbl dig
 Dataset Creation: Mon Dec 16 10:35:45 2013 by Log SCH 111116
 Charted by: Depth in Feet scaled 1:240

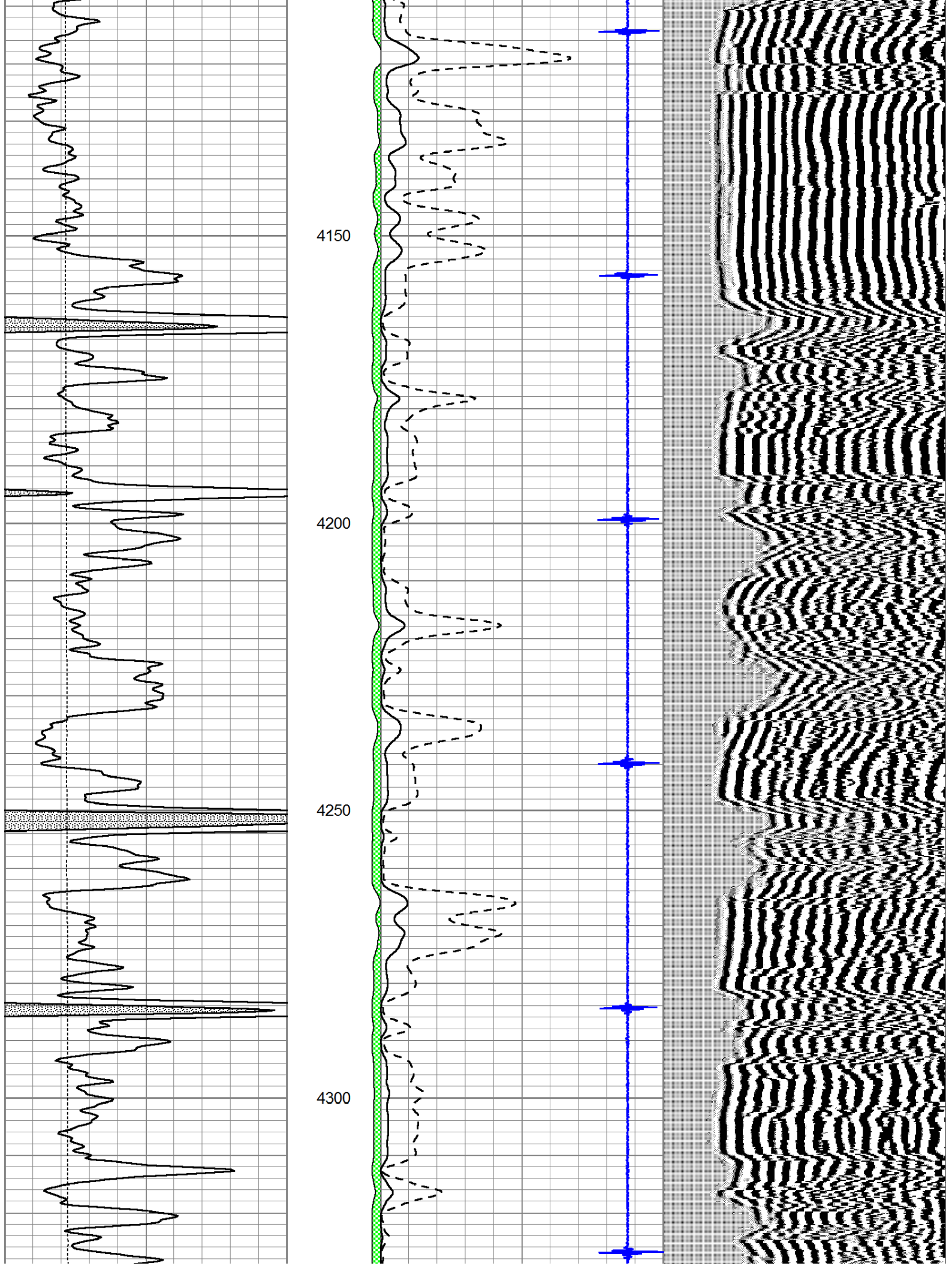


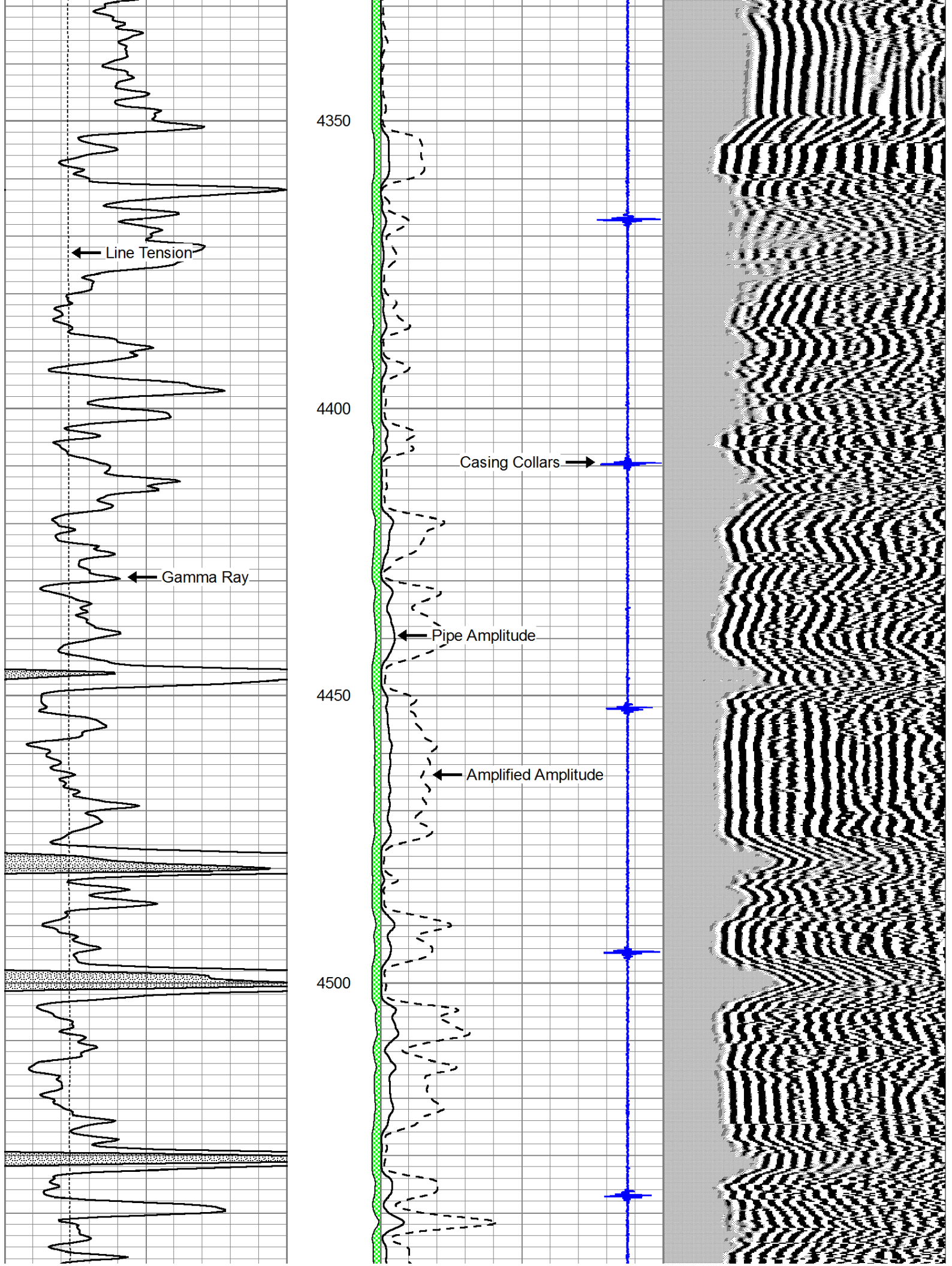


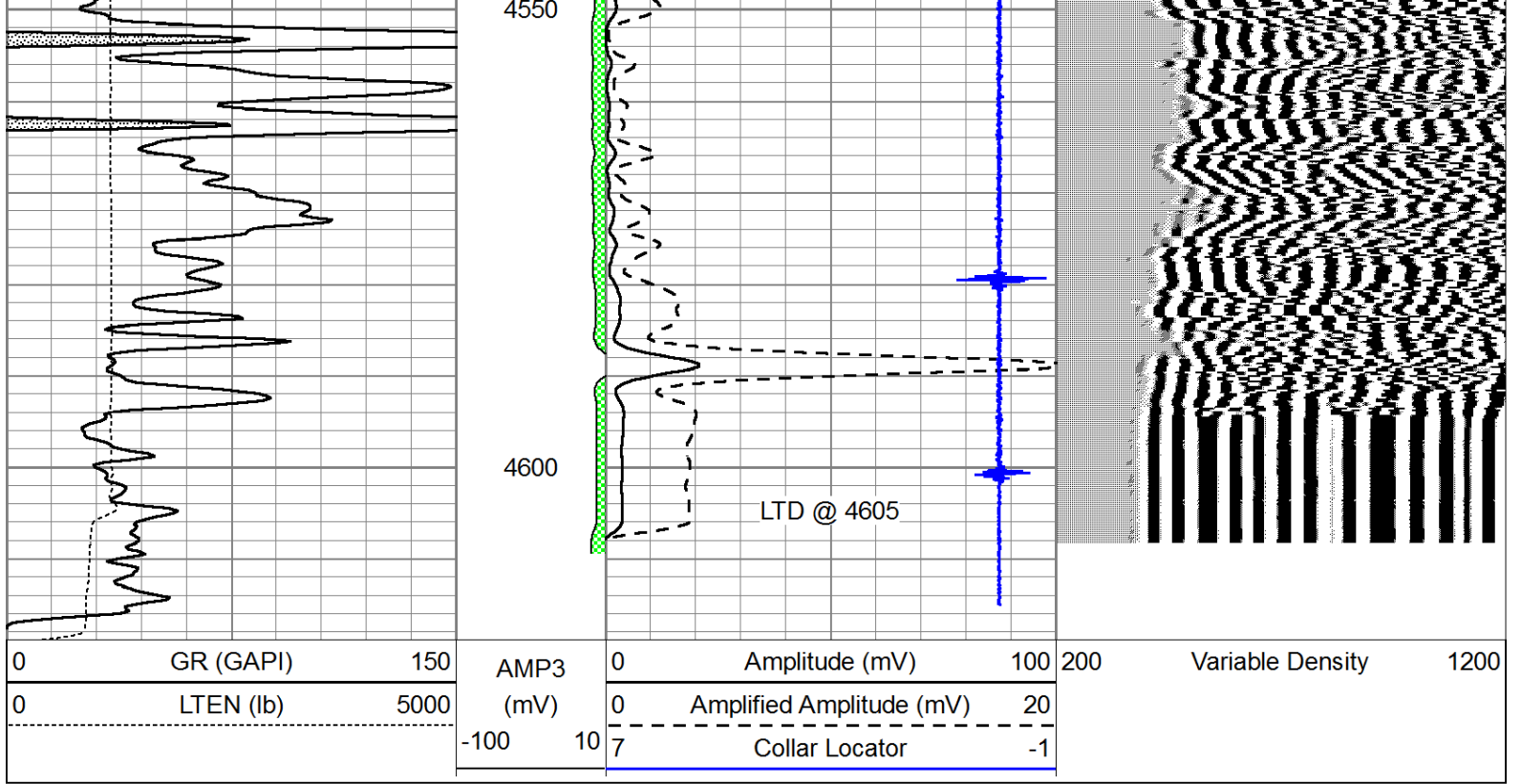












Repeat Section

Database File: shake_campbell3-27_cbl.db
 Dataset Pathname: grcbl/pass2
 Presentation Format: cbl dig
 Dataset Creation: Mon Dec 16 10:31:10 2013 by Log SCH 111116
 Charted by: Depth in Feet scaled 1:240

