



Scale 1:240 (5"=100') Imperial
Measured Depth Log

Well Name: Pollok Energy, LLC Circle D 25-9
Location: Sec. 25 26S-27W, Gray County, Kansas
License Number: 15-069-20448-00-00 Region: Wildcat
Spud Date: 11-13-13 Drilling Completed: 11-24-13
Surface Coordinates: 1,827' FSL & 819' FEL, SE/4

Bottom Hole As Above
Coordinates:
Ground Elevation (ft): 2,596' K.B. Elevation (ft): 2,608'
Logged Interval (ft): 2,400' To: 5,650' Total Depth (ft): 5,650'
Formation: Permian, Penn. & Miss.
Type of Drilling Fluid: Fresh Water

Printed by WellSight Log Viewer from WellSight Systems 1-800-447-1534 www.WellSight.com

OPERATOR

Company: Pollok Energy, LLC
Address: PO Box 106
Purcell, OK 73080

GEOLOGIST

Name: Mr. Mike Pollok
Company: Pollok Energy, LLC
Address: PO Box 106
Purcell, OK 73080

DSTs

DST # 1 (4,946'-5,065') 30-60-60-120

REC. - 270' Mud

IF-Weak Blow FF-Fair Blow

IF-25-90 FF- 95-194

ISI - 1,414 FSI - 1,401

IH - 2,440 FH - 2,279

BHT - 112°F

DST #2 (5,054'-5,112') 15-30-30-60

REC. 536' SW, 58,000 ppm CHL

279' MCW

124' MUD

IF-Fair Blow, BOB in 4 min FF-Fair Blow, BOB in 8 min

IF-63-292 FF- 301-457

ISI- 1,478 FSI- 1,471

IH-2,572 FH-2,453

BHT-116°F

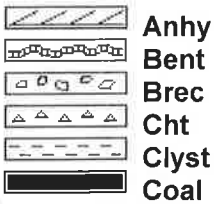
Comments

Duke Rig #6 Samples

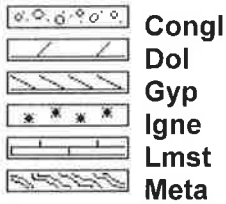
GeoDynamic Mudlogging Unit #1

Field Geologist: Bill Bush

ROCK TYPES



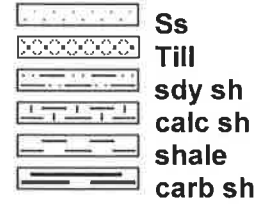
Anhy
Bent
Brec
Cht
Clyst
Coal



Congl
Dol
Gyp
Igne
Lmst
Meta



Mrlst
Salt
Shale
Shcol
Shgy
Sltst



Ss
Till
sdv sh
calc sh
shale
carb sh

ACCESSORIES

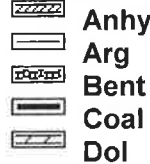
MINERAL



FOSSIL



STRINGER



TEXTURE



OTHER SYMBOLS

POROSITY TYPE

- E Earthy
- Fenest
- F Fracture
- ⊗ Inter
- ⊠ Moldic
- ◻ Organic
- P Pinpoint
- V Vuggy

SORTING

- W Well
- M Moderate
- P Poor

ROUNDING

- R Rounded
- r Subrnd
- a Subang

- △ Angular

OIL SHOWS

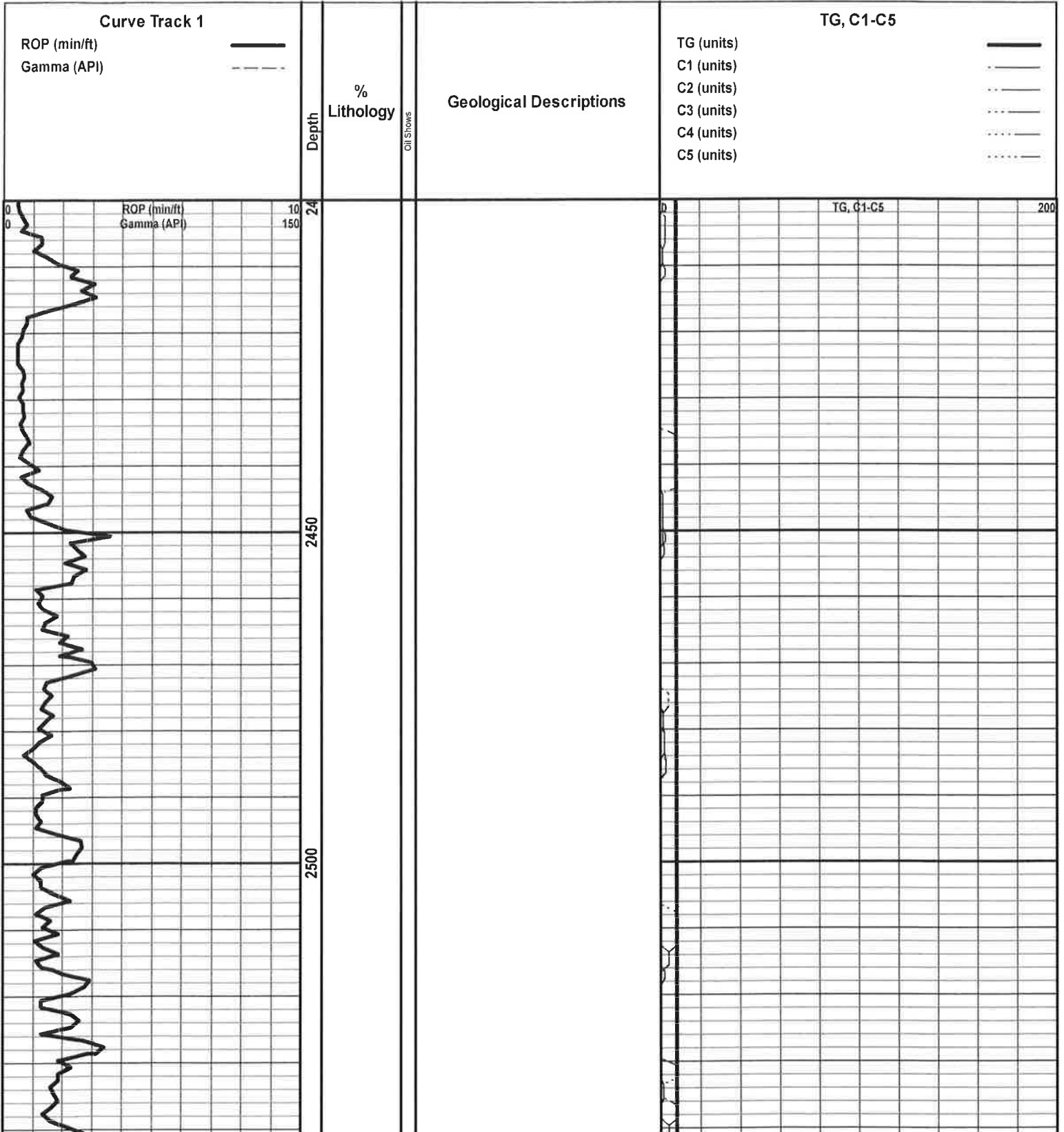
- Even
- ⊕ Spotted
- Ques
- ◻ Dead

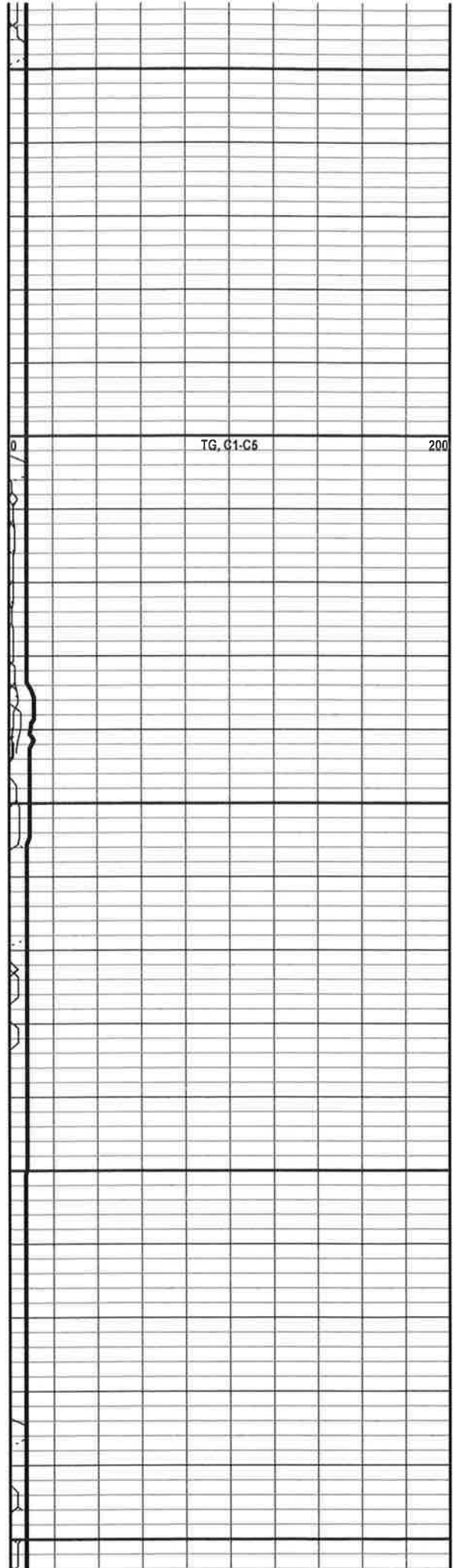
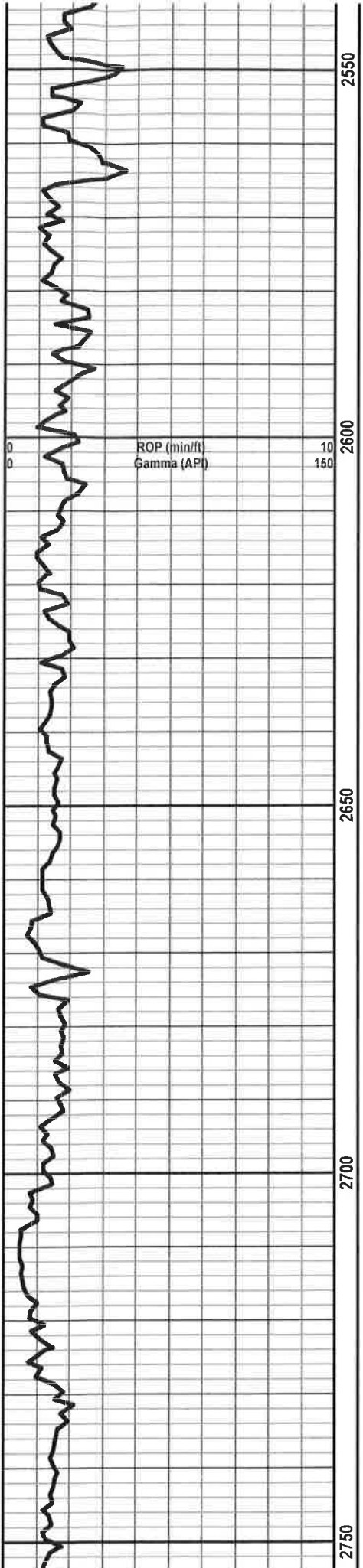
INTERVALS

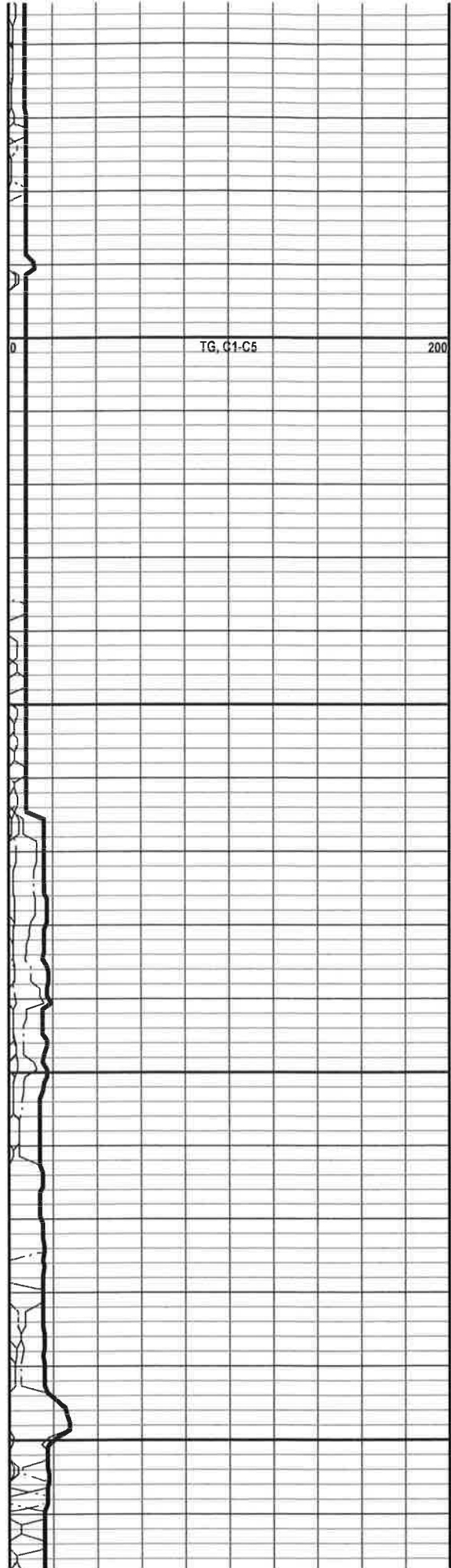
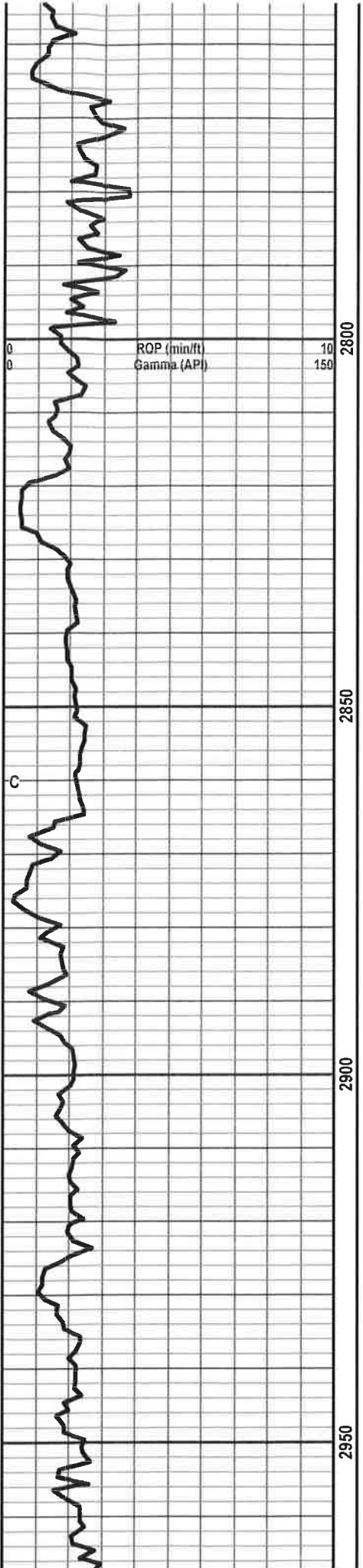
- Core
- Dst

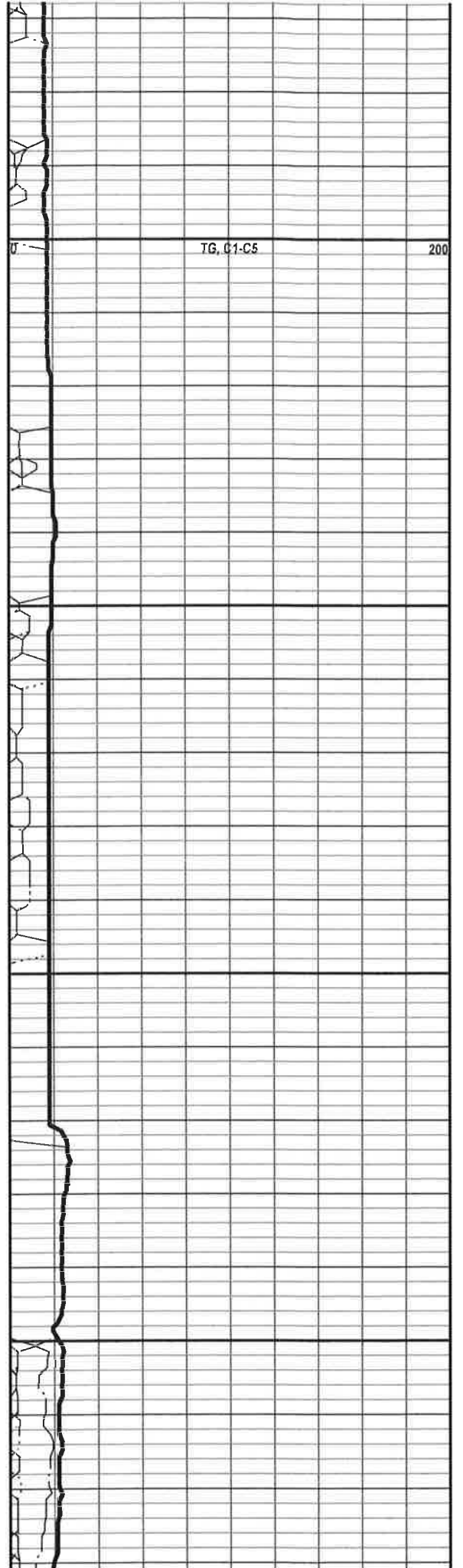
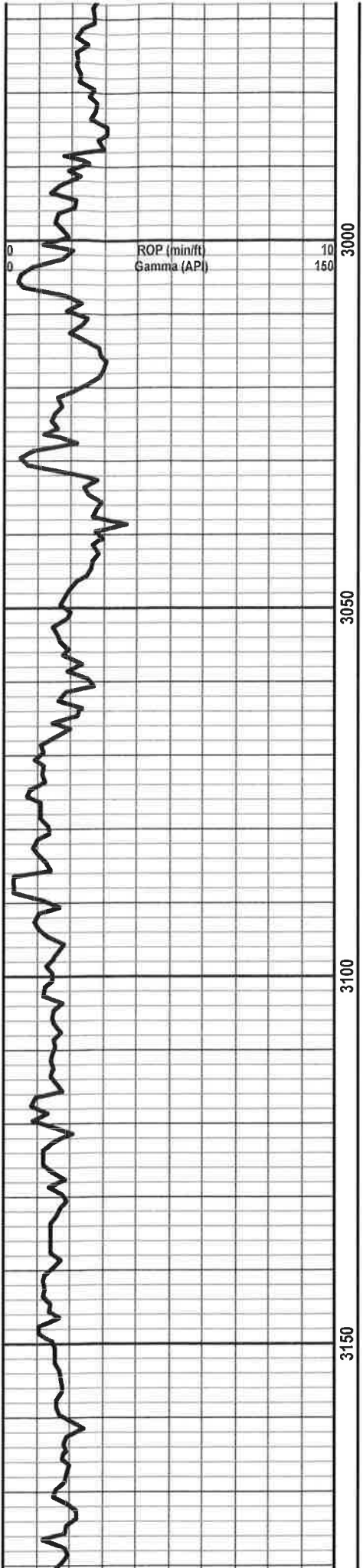
EVENTS

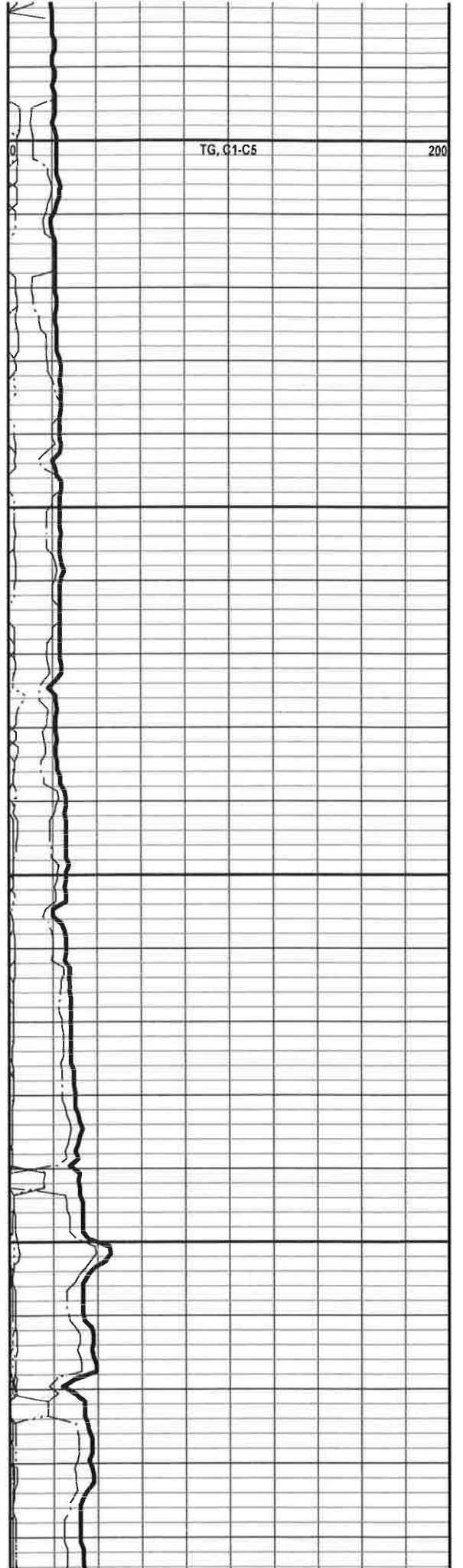
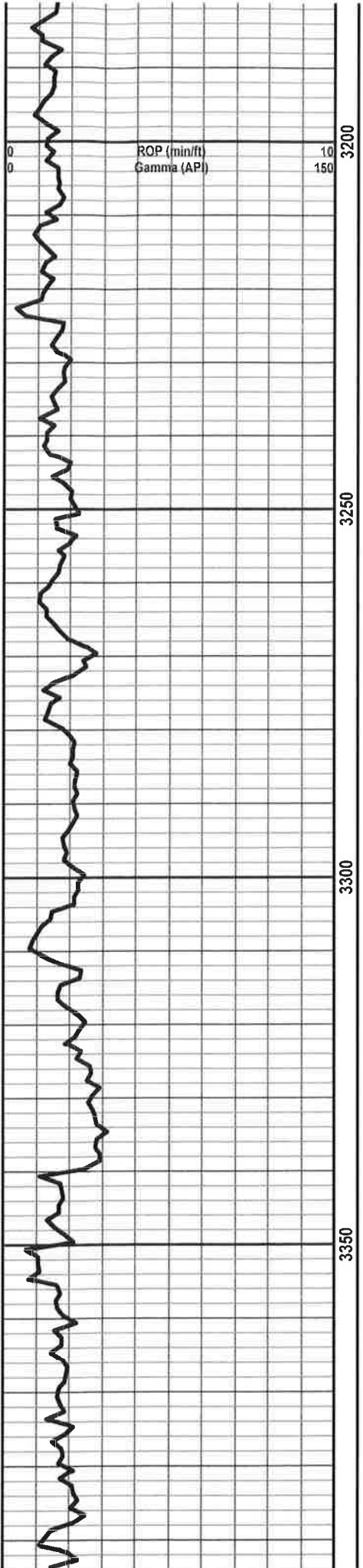
- ▽ Rft
- ▶ Sidewall

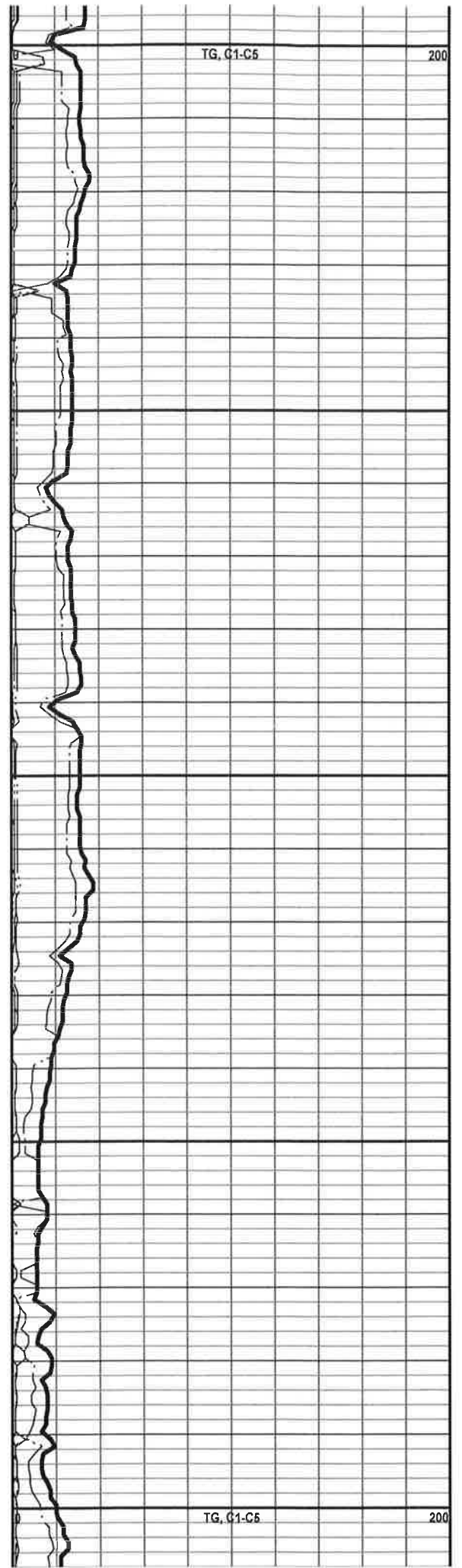
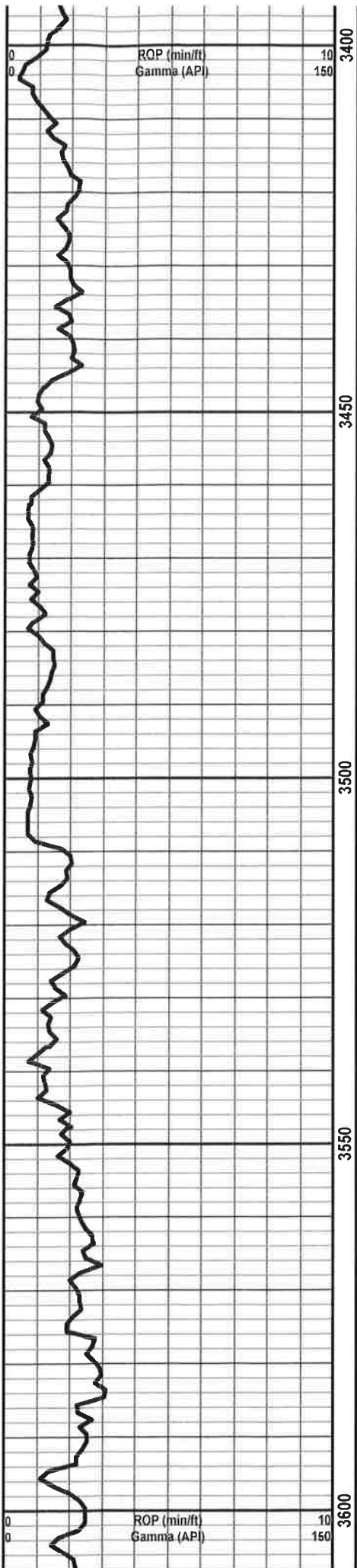


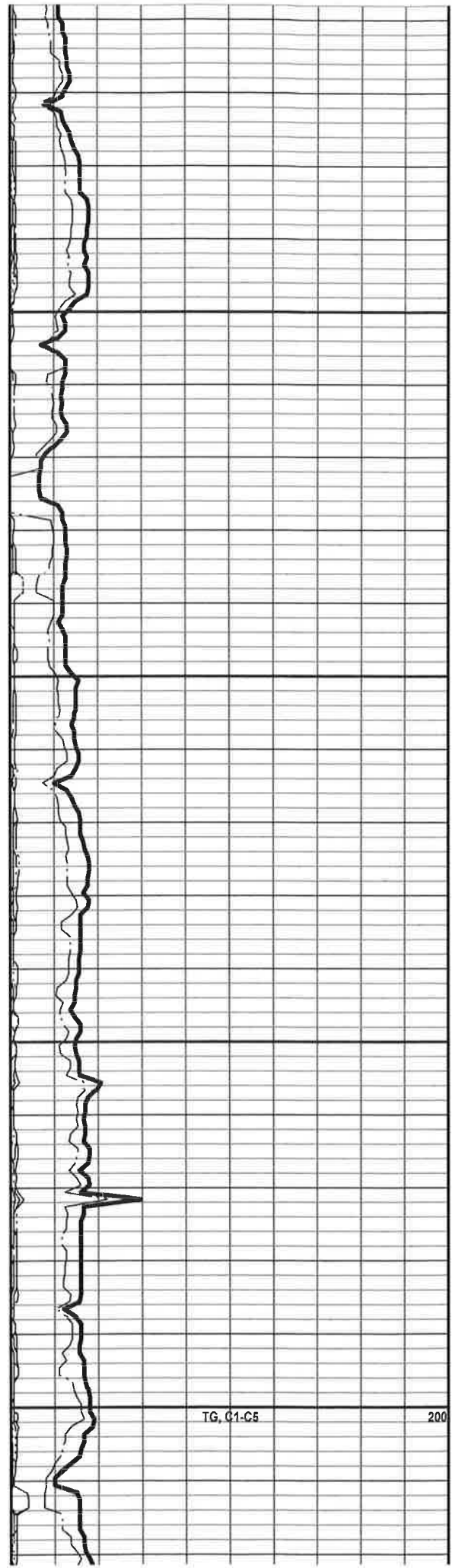
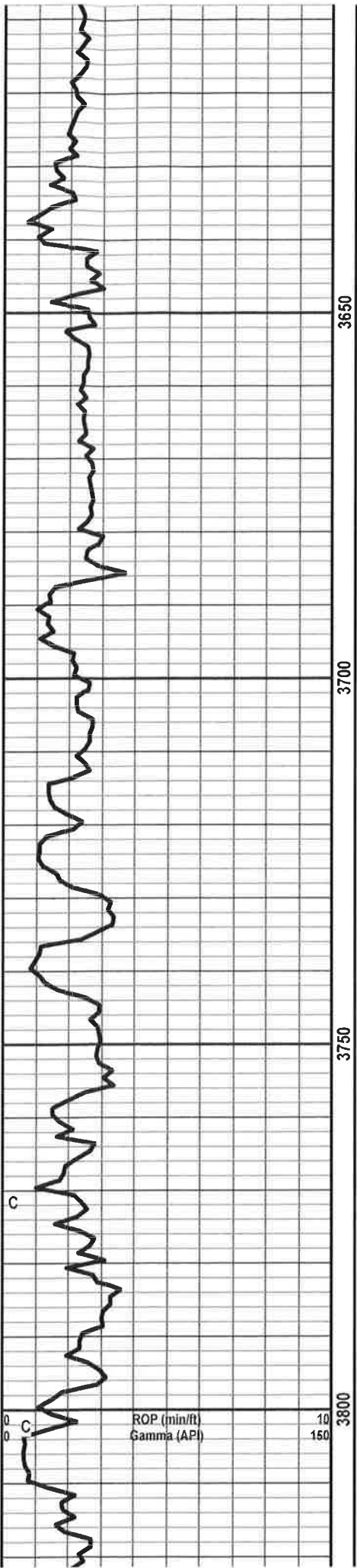


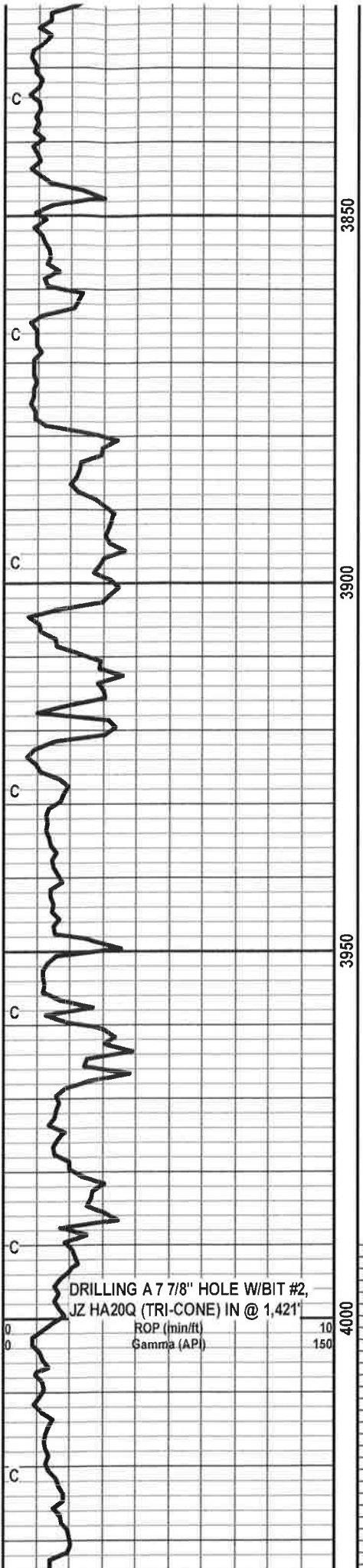










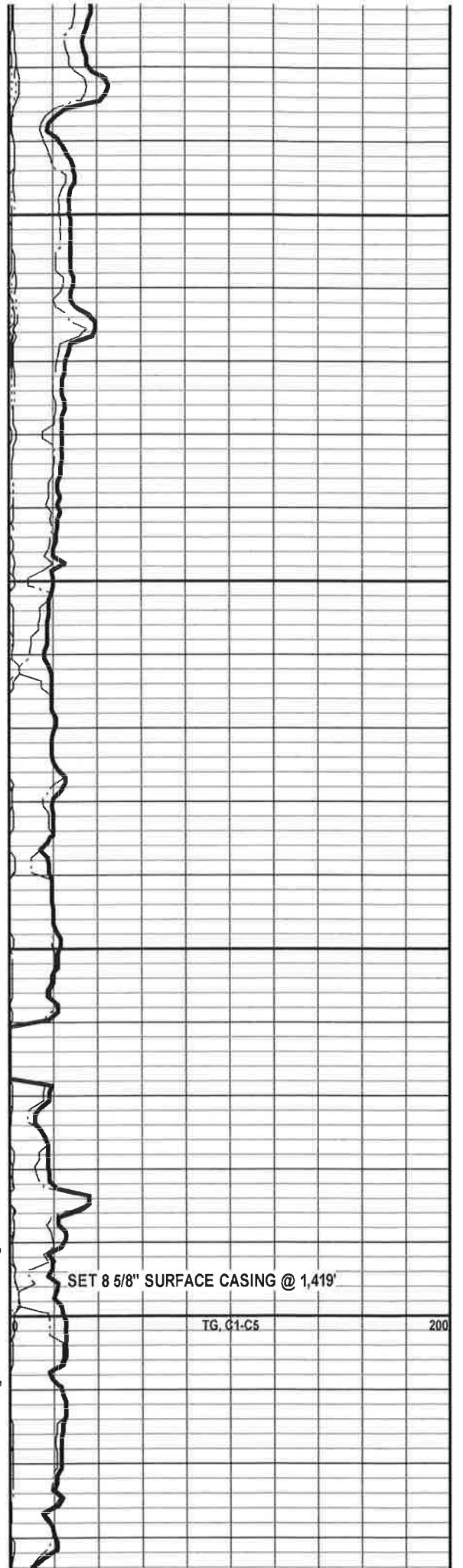


DRILLING A 7 7/8" HOLE W/BIT #2,
JZ HA20Q (TRI-CONE) IN @ 1,421'

ROP (min/ft) 10
Gamma (API) 150

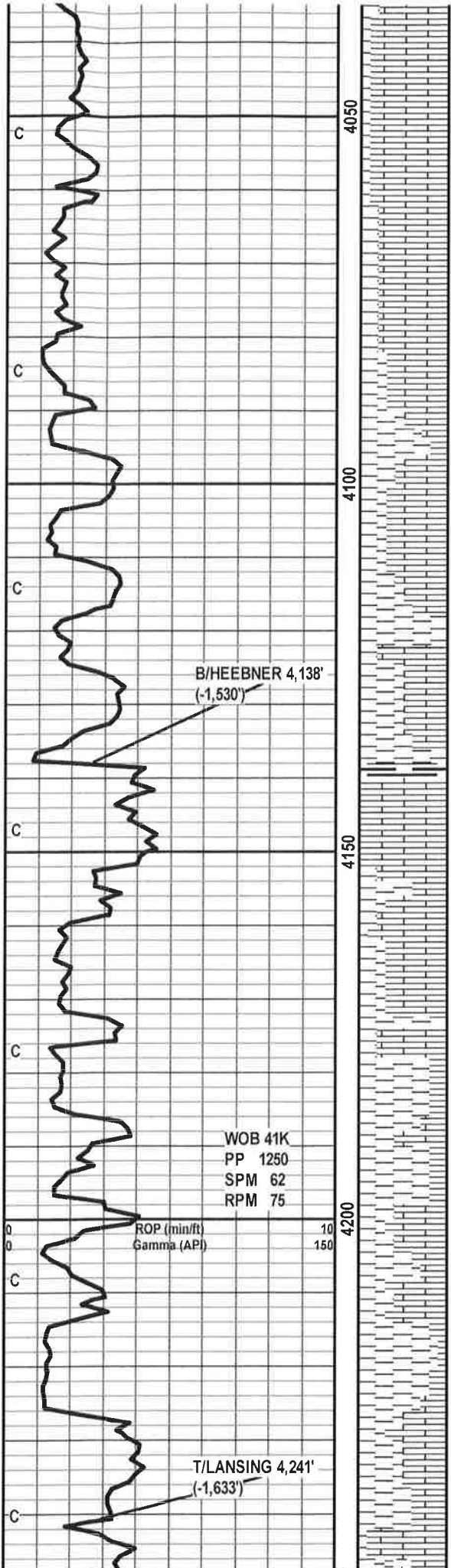
BEGAN ONEMAN LOGGING @ 4,000'
@ 12:09 AM ON 11-17-13

LS:WHT-OFF WHT, MED-CHKY,
SFT-FRM-BRTL, FOSS, SL SUCR I.P.,
GD PP POR, DLL FLU, NO VIS STN,
CUT, OR ODOR



SET 8 5/8" SURFACE CASING @ 1,419'

TG, G1-C5 200



LS: WHT-OFF WHT-LI GRY-GRW,
MED-CHKY-SUCR W/SM XLN,
FRM-BRTL W/SM SFT, ERTY I.P.,
FOSS, GD PP W/SM INTR XLN POR,
DLL FLU, NO VIS STN, CUT, OR
ODOR

LS: OFF WHT-CRM-BFF-LT GRY, MCR
XLN-FN-MED, BRTL-HRD W/SM SFT,
CHRT, ARG I.P., GD PP POR, DLL
FLU, NO VIS STN, CUT, OR ODOR

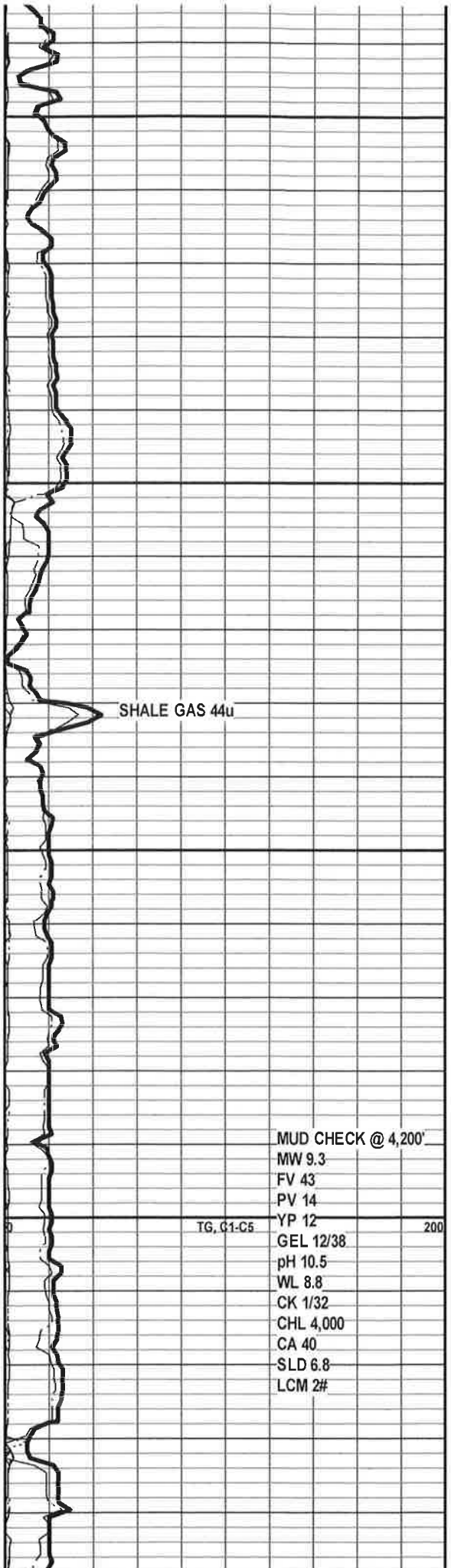
LS: OFF WHT-CRM-BFF-LT GRY,
XLN-FN-MED, BRTL-HRD W/TR SFT,
TR CHRT, SL SUCR I.P., PP POR,
DLL FLU, NO VIS STN, CUT, OR
ODOR

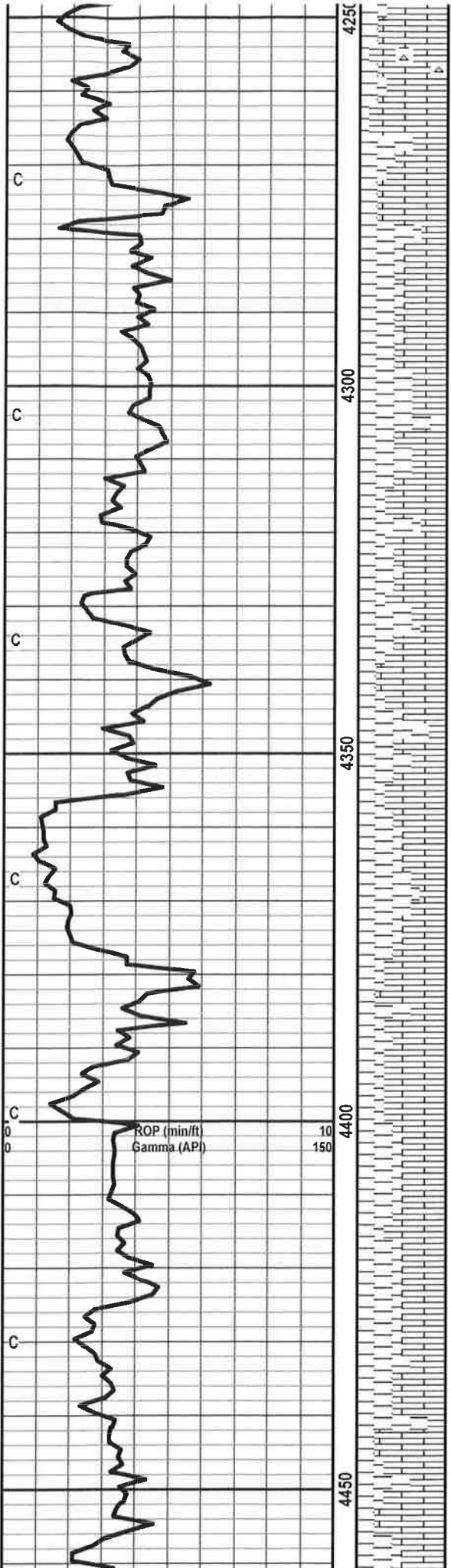
SH: BLK, WXY, HRD-FRM-BRTL,
CALC, MICA, CARB, BLKY-SPL

LS: CRM-BFF-GRY, MCRO
XLN-XLN-SUCR, HRD-BRTL W/TR
FRI, ARG I.P., PYR, PP-INTR XLN
W/SM FRAC POR, SM DLL FLU, NO
VIS STN, CUT, OR ODOR

SH: LT GRY-GRY, FN, SFT, PYR, TR
FOSS, IMB'D CALC,

LS: BFF-BRN-GRY, MCRO
XLN-XLN-MED W/SM SUCR,
BRTL-HRD W/SM FRI, ERTY I.P., ARG
I.P., FOSS, PP W/SM FRAC & INTR
XLN POR, DLL FLU, NO VIS STN,
CUT, OR ODOR





LS: WHT-OFF WHT-CRM-BFF,
 DNS-MCRO XLN-XLN, HRD W/SM
 BRTL, ABNDT CHRT, PR PP W/SM
 FRAC POR, ABNDT DLL FLU, NO VIS
 STN, CUT, OR ODOR

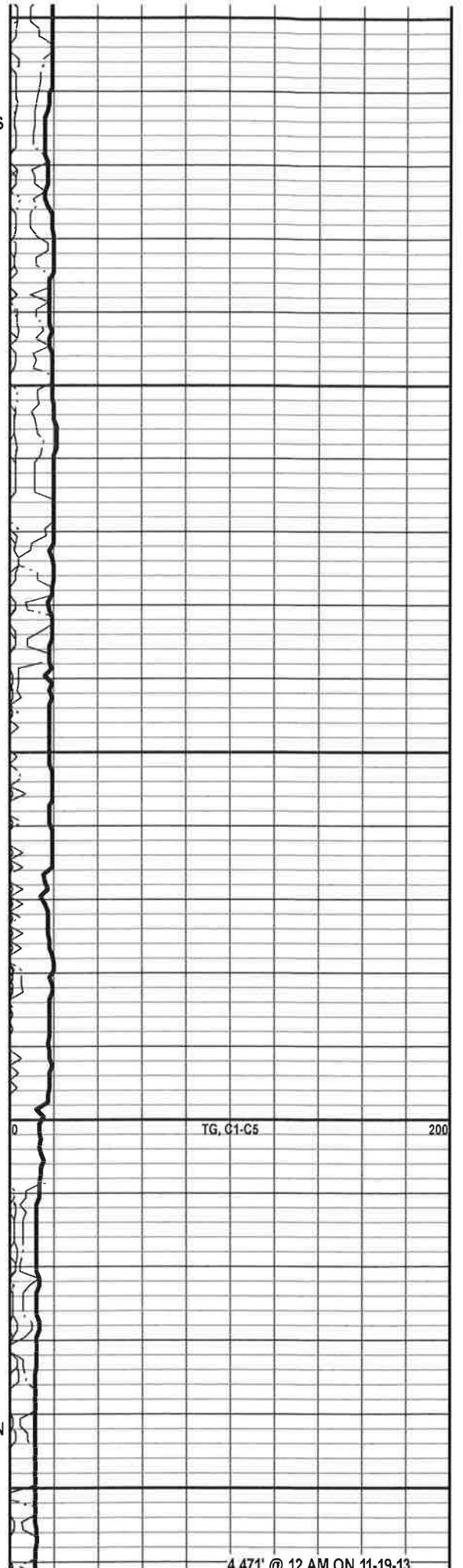
LS: BFF W/SM CRM & TR BRN,
 DNS-MCRO XLN-XLN-FN, HRD W/SM
 BRTL & TR SFT, CHRT, FOSS, PP
 W/SM FRAC POR, ABNDT DLL FLU,
 NO VIS STN, CUT, OR ODOR

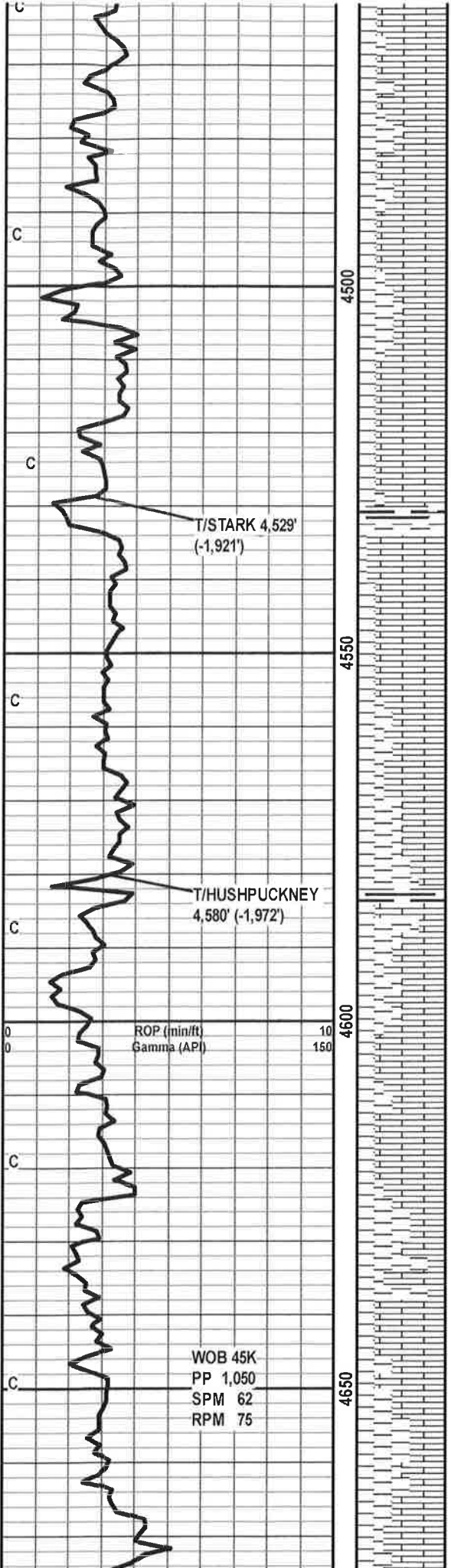
LS: GRY W/SM CRM & BFF,
 DNS-MCRO XLN-FN W/SM XLN, HRD
 W/SM BRTL, ABNDT CHRT, FOSS,
 PYR, PR PP W/SM FRAC POR, DLL
 FLU, NO VIS STN, CUT, OR ODOR

LS: BFF-GRY W/SM TR CRM, MCRO
 XLN-FN W/SM XLN, HRD-BRTL,
 ABNDT CHRT, PP-FRAC POR, DLL
 FLU, NO VIS STN, CUT, OR ODOR

LS: BFF-LT GRY W/SM TN, MCRO
 XLN-XLN-MED W/SM SUCR, HRD
 W/SM FRI, FOSS, CHRT, PP W/SM
 INTR XLN W/TR VUG POR, DLL FLU,
 NO VIS STN, CUT, OR ODOR

LS: TN-BFF-BRN W/TR CRM, MCRO
 XLN-XLN-FN W/TR MED & SUCR,
 HRD-BRTL, PP-FRAC W/TR INTR XLN
 POR, DLL W/TR BRT FLU, NO VIS
 STN, CUT, OR ODOR





LS: CRM-BFF-BRN, MED-SUCR W/SM MCRO XLN, FRI-FRM-HRD W/SM BRTL, MLD'C I.P., CHRT, ERTY, GD PP W/SM VUG & INTR XLN POR, DLL FLU, NO VIS STN, CUT, OR ODOR

LS: CRM-BFF-GRY W/TR BRN, XLN-FN-MED W/TR CHKY & SUCR, HRD-BRTL W/TR SFT & FRI, CHRT, ERTY I.P., TR MLD'C, FOSS, GD PP-FRAC W/SM INTR XLN POR, DLL FLU, NO VIS STN, CUT, OR ODOR

SH: DRK GRY-BLK, WXY-FN, FRM, CALC, SPL W/SM BLKY, CARB I.P.

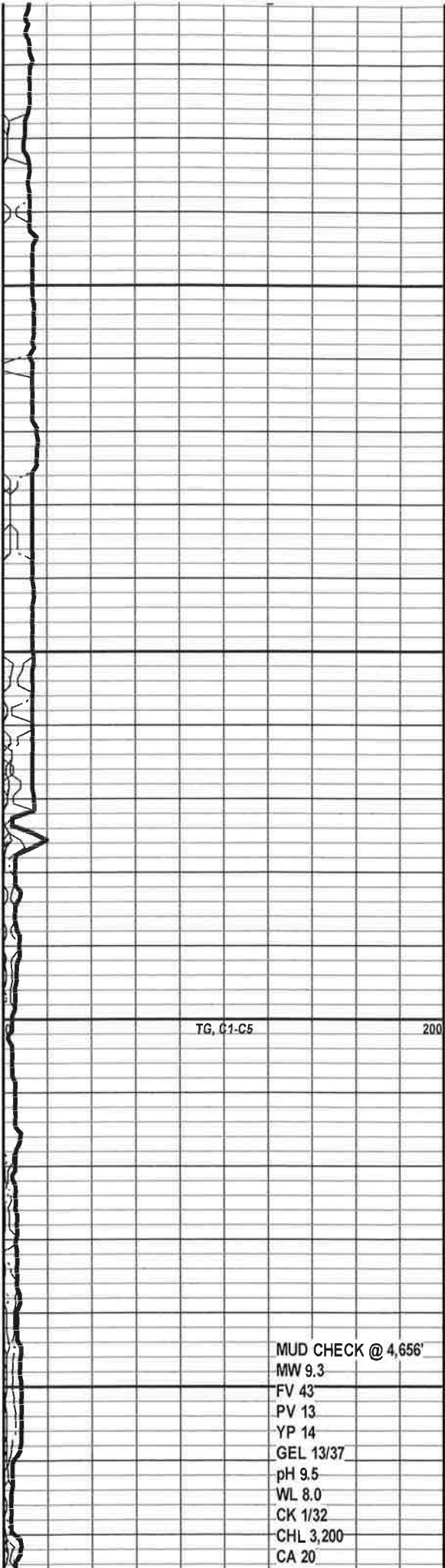
LS: CRM-BFF-BRN, XLN-FN-MED W/SM SUCR, HRD, ERTY I.P., FOSS, CHRT, PP W/SM VUG POR, DLL FLU, NO VIS STN, CUT, OR ODOR

LS: OFF WHT-CRM-BFF-BRN, XLN-FN-MED W/SM MCRO XLN, HRD W/SM BRTL, PP W/SM FRAC POR, DLL FLU, NO VIS STN, CUT, OR ODOR

SH: BLK-DRK GRY, WXY, HRD, BLKY, CARB

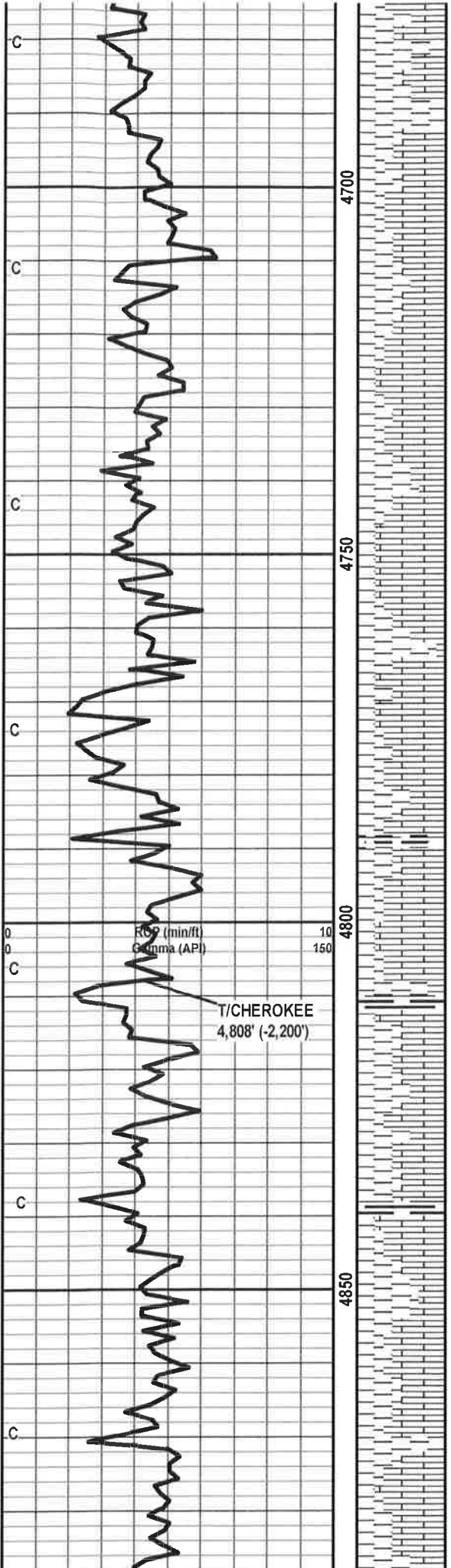
LS: OFF WHT-CRM W/SM BFF & BRN, DNS-XLN-FN W/SM SUCR, HRD-BRTL W/SM SFT, CHRT, PP-FRAC POR, DLL FLU, NO VIS STN, CUT, OR ODOR

LS: CRM-BFF-TN-BRN-GRY, MCRO XLN-XLN-FN W/SM MED, HRD-BRTL-FRM, ARG I.P., ERTY I.P., CHRT, PP-FRAC POR, DLL FLU, NO VIS STN, CUT, OR ODOR



TG, C1-C5 200

MUD CHECK @ 4,656'
MW 9.3
FV 43
PV 13
YP 14
GEL 13/37
pH 9.5
WL 8.0
CK 1/32
CHL 3,200
CA 20



SH: GRY-BLK, FN-SL WXY, FRM, CALC I.P., PLTY-BLKY, CARB I.P.

LS: CRM-BFF W/SM GRY, XLN-MED-FN, BRTL-HRD W/TR FRI, TR ARG, FOSS, PP-FRAC POR, DLL FLU, NO VIS STN, CUT, OR ODOR

LS: BFF-GRY-BRN, MCRO XLN-XLN-FN-MED, BRTL-HRD-FRM, ERTY I.P., ARG I.P., FOSS, PP-FRAC POR, DLL FLU, NO VIS STN, CUT, OR ODOR

LS: CRM-BFF W/SM GRY BRN, XLN-FN W/SM MED, HRD, CHRT, TR ARG, ERTY I.P., FOSS, PP POR, DLL FLU, NO VIS STN, CUT, OR ODOR

SH: BLK, WXY, FRM-HRD, BLKY-PLTY, CARB

LS: TN-BFF-BRN W/SM GRY & CRM, XLN-FN-MED, HRD W/SM BRTL & TR SFT, CHRT, SL ERTY I.P., PP W/SM FRAC POR, DLL FLU, NO VIS STN, CUT, OR ODOR

SH: GRY-GRN-BR-BLK, FN-SLTY-WXY, FRM-HRD-SFT, PYR, CARB, BLKY

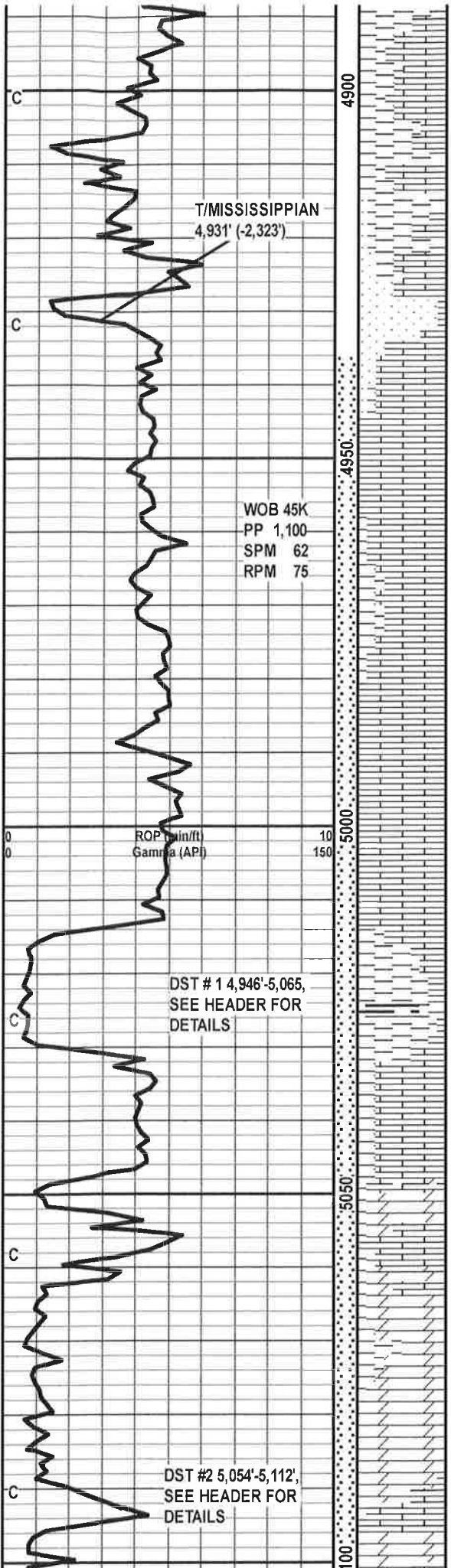
LS: BFF-BRN W/SM CRM, DNS-XLN-FN W/TR SUCR, HRD-BRTL, CHRT, FOSS, ERTY, PP-FRAC W/TR SUCR POR, DLL FLU, NO VIS STN, CUT, OR ODOR

LS: CRM-BFF-GRY-BRN W/TR WHT, MCRO XLN-XLN-FN, HRD-BRTL-FRM, ERTY, FOSS, CHRT, GLAU'C SPKS, PP-FRAC W/TR INTR XLN POR, TR DLL FLU, NO VIS STN, CUT, OR ODOR

TG, G1-C5

200

4,856' @ 12AM ON 11-20-13



LS: BRN-BFF-CRM, XLN W/SM MCRO
XLN & SUCR, FOSS, ERTY I.P., GD
PP W/SM FRAC & INTR XLN POR,
DLL FLU, NO VIS STN, CUT, OR
ODOR

LS: AAB W/SM V/FN SS: OFF
WHT-YEL-GRN-RED, MOD-WLL
SRTD, ANG-SUB ANG-SUB RND,
UNCONS-CONSL, CALC, FROS-CLR,
TR DLL FLU, NO VIS STN, CUT, OR
ODOR

LS: WHT-OFF WHT-CRM-BRN, BRTL
W/SM HRD, PP-FRAC POR, DLL FLU,
NO VIS STN, CUT, OR ODOR

LS: AAB

LS: MCRO XLN-FN W/SM SUCR &
CHKY, HRD-BRTL W/SM SFT & FRI,
TR MLD'C, FOSS, PP W/SM FRAC &
TR INTR XLN & VUG POR, DLL YEL
FLU, NO VIS STN, CUT, OR ODOR

SH: GRN-GRY-DRK GRY-blk,
FN-SLTY, SFT, CALC, MICA, PYR,
CARB PLTY-BLKY

DOLO: CRM-BFF-BRN, FN-MED-SL
SUCR, FRM-BRTL W/SM HRD & FRI,
LMY, PP W/SM INTR XLN POR, DLL
FLU, NO VIS STN, CUT, OR ODOR

DOLO: CRM, V/SUCR-MED,
V/BRTL-HRD, SL MLD'C I.P., GD
PP-INTR XLN W/SM VUG POR, SM
DLL FLU, DD OIL-ASPLT STN, V/FNT
ODOR, NO CUT

DOLO: WHT-LT TN,
MED-CHKY-V/SUCR, FRI-SFT-BRTL,
EXCL PP INTR XLN W/SM VUG POR

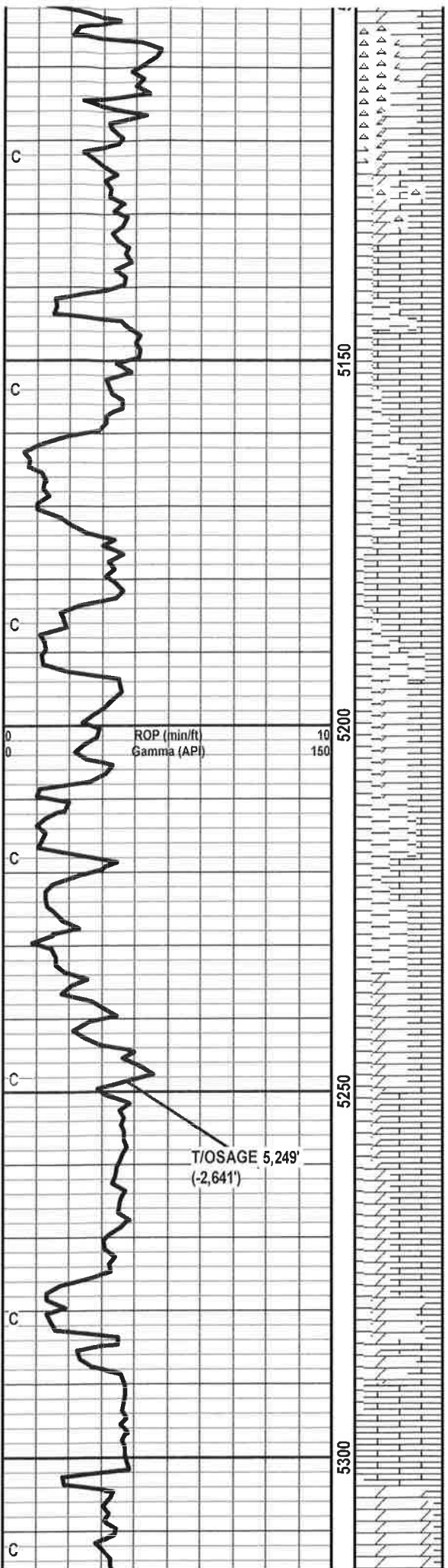
PUMP MAINTENANCE @ 4,927'

LIGHTER TEST

MUD CHECK @ 4,968'
MW 9.3
FV 47
PV 15
YP 16
GEL 15/47
pH 9.5
WL 7.2
CK 1/32
CHL 3,200
CA 20
SLD 7.0
LCM 2#

TG, G1-C5 200

MUD CHECK @ 5,112'



PP-INTR XLN W/SM VUG POR,
YEL WHT FLU, ASPHLT STN, FNT
ODOR, NO CUT

LS: WHT-OFF WHT,
MED-SUCR-CHKY, HRD W/SM SFT &
FRI, DOLO'C I.P., CHRT, PP-INTR
XLN POR, ABNDT YEL WHT FLU, NO
VIS STN, CUT, OR ODOR

LS: SHT-OFF WHT W/SM CRM,
MED-SUCR, BRTL-HRD, CHRT, CHKY
I.P., PP-INTR XLN W/SM FRAC POR,
ABNDT YEL WHT FLU, NOVIS STN,
CUT, OR ODOR

LS: AAB W/SM DOLO'C & SH:
GRY-DRK GRY-GRN, FN, FRM-SFT
W/SM BRTL, FOSS, MICA, CALC I.P.,
CARB I.P., V.SPL

SH: BLK-LT GRY-DRK GRY-BRN,
FN-SLTY W/SM WXY, SFT-FRM-BRTL,
CALC, BLKY-PLTY, CARB, MICA,
FOSS, W/SM LS: WHT-OFF WHT
W/TR CRM, V/SUCR-MED W/SM
CHKY, FRI-BRTL-HRD, DOLO'C I.P.,
ABNDT CHRT, GD PP-INTR XLN
W/SM VUG POR, DLL FLU, NO VIS
STN, CUT, OR ODOR

LS: AAB W/SM BFF & ABNDT DLL
FLU

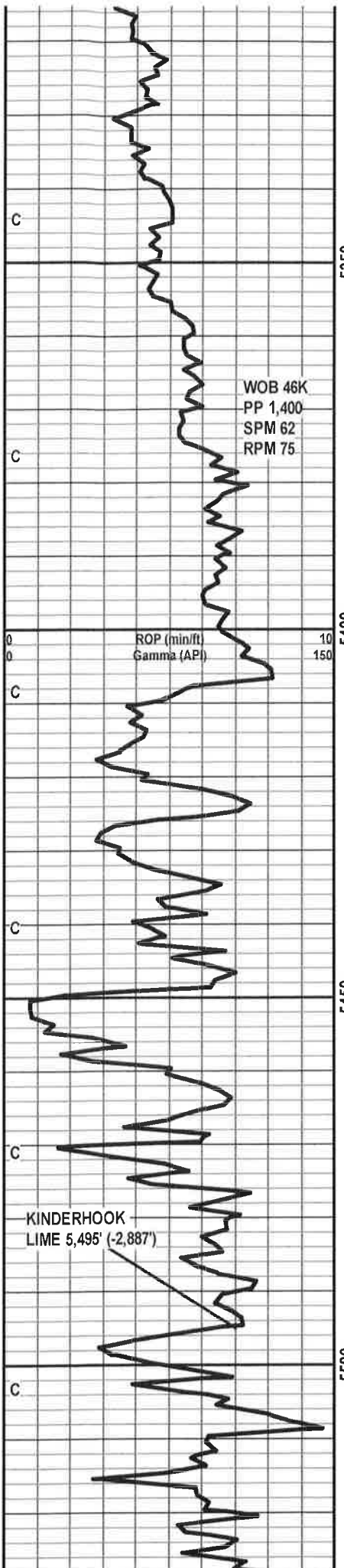
DOLO: OFF WHT-V/LT GRY,
FN-SUCR, FRI, GD INTR XLN-PP
POR, NO FLU, STN, CUT, OR ODOR

DOLO: LT GRY-WHT W/TR CRM,
SUCR-MED-FN, BRTL-HRD, CHRT,
CALC SBKS MTT/D L.P. BB INT

MW 9.3
FV 46
PV 14
YP 15
GEL 14/45
pH 9.5
WL 8.4
CK 1/32
CHL 4,900
CA 20
SLD 6.8
LCM 2#

TG, G1-C5 200

5,278' @ 12AM ON 11-23-13



WOB 46K
PP 1,400
SPM 62
RPM 75

ROP (min/ft)
Gamma (API)

KINDERHOOK
LIME 5,495' (-2,887')

GLAU'C SPKS, W/LED I.P., PP-INTR
XLN POR, NO FLU, STN, CUT, OR
ODOR

DOLO: LT GRY W/SM LT GRY & WHT,
FN-SUCR, BRT-HRD, LMY I.P.,
GLAU'C SPKS I.P., SM CHRT,
PP-INTR XLN POR, SM DLL FLU, NO
VIS STN, CUT, OR ODOR

DOLO: LT GRY-CRM, FN-SUCR,
BRTL-HRD W/SM FRI, ARG I.P.,
FOSS, V/LMY I.P., PP-INTR XLN
POR, DLL YEL FLU, NO VIS STN,
CUT, OR ODOR

DOLO: CRM-OFF WHT, CHKY W/SM
SUCR, SFT W/SM FRM, PP W/SM
INTR XLN POR, ABNDT YEL WHT
FLU, NO VIS STN, CUT, OR ODOR

DOLO: LT GRY W/CRM & WHT,
FN-SUCR, BRTL W/SM HRD, CHRT,
V/LMY I.P., PP-INTR XLN POR, DLL
FLU, NO VIS STN, CUT, OR ODOR

DOLO: WHT-OFF WHT W/SM CRM,
FRI-SFT W/SM HRD, ABNDT CHRT,
LMY I.P., CHKY I.P., ABNDT DLL FLU,
NO VIS STN, CUT, OR ODOR

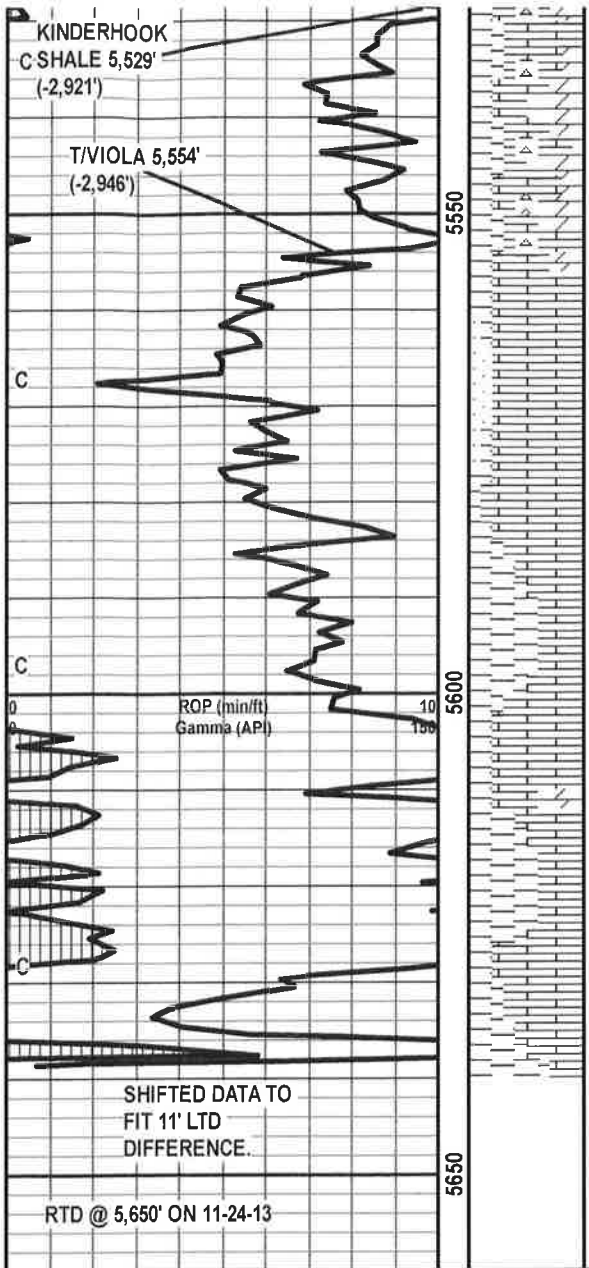
DOLO: AAB

DOLO: WHT-OFF WHT W/SM CRM &
TP RPM FRI FRM W/SM RPTI &

MUD CHECK @ 5,378'
MW 9.35
FV 52
PV 16
YP 19
GEL 17/52
pH 9.0
WL 8.8
CK 1/32
CHL 3,100
CA 40
SLD 7.0
LCM 3#

TG, G1-C5

200



HRD, V/LMY I.P., CHKY I.P., CHRT,
PP-INTR XLN POR, DLL FLU, NO VIS
STN, CUT, OR ODOR

LS: CRM, FN-MED W/SM XLN &
SUCR, BRTL W/SM HRD, CHKY
DOLO'C I.P., I.P., MLKY CHRT,
PP-INTR XLN W.SM FRAC POR, DLL
FLU, NO VIS STN, CUT, OR ODOR

SH: GRY-DRK GRY-GRN-BLK,
WXY-FN, CALC, SFT-FRM-HRD,
MICA, CARB I.P., SPL-BLKY

LS: CRM-GRY W/SM BRN,
SUCR-XLN-FN, BRTL-HRD, DOLO'C
I.P., MLKY CHRT, PP-INTR XLN POR,
TR DLL FLU, NO VIS STN, CUT, OR
ODOR

SH: GRY-DRK GRY-GRN-BLK,
FN-SLTY, BRTL-HRD W/SM FRM,
CALC I.P., MICA, BLKY-PLTY, CARB
I.P.

LS: WHT-CRM-OFF WHT, XLN-FN
W/SM SUCR, DOLO'C I.P., PP W/SM
INTR XLN POR, DLL FLU, NO VIS
STN, CUT, OR ODOR

NOTE: LTD = 5,636'

8 STAND SHORT TRIP, CIRC 1 1/2
HRS, SURVEY, TOH FOR ELOGS

