



Pioneer Energy Services

Microresistivity Log

API No.	15-153-20,963-00-00		
Company	Berexco, LLC		
Well	Michael No. 6-22		
Field	East Fork		
County	Rawlins	State	Kansas
Location	NE-SW-NE 1630' FNL & 1500' FEL		
Sec: 22	Twp: 1S	Rge: 36W	Other Services RAG

Permanent Datum	Ground Level	Elevation 3217	K.B. 3230 D.F. 3217 G.L. 3217
Log Measured From	Kelly Bushing	13 Ft. Above Perm. Datum	
Drilling Measured From	Kelly Bushing		
Date	12/7/13		
Run Number	Two		
Depth Driller	4490		
Depth Logger	4492		
Bottom Logged Interval	4491		
Top Log Interval	3500		
Casing Driller	8.625 @ 310		
Casing Logger	302		
Bit Size	7.875		
Type Fluid in Hole	Chemical		
Salinity, ppm CL	1,600		
Density / Viscosity	8.9 172		
pH / Fluid Loss	8.0 6.4		
Source of Sample	Flowline		
Rm @ Meas. Temp	.56 @ 49		
Rmf @ Meas. Temp	.42 @ 49		
Rmc @ Meas. Temp	.76 @ 49		
Source of Rmf / Rmc	Charts		
Rm @ BHT	.23 @ 121		
Operating Rig Time	4 Hours		
Max Rec. Temp. F	121		
Equipment Number	108		
Location	Hays		
Recorded By	J. Henrickson		
Witnessed By	Pete Vollmer		

<<< Fold Here >>>

All interpretations are opinions based on inferences from electrical or other measurements and we cannot and do not guarantee the accuracy or correctness of any interpretation, and we shall not, except in the case of gross or willful negligence on our part, be liable or responsible for any loss, costs, damages, or expenses incurred or sustained by anyone resulting from any interpretation made by any of our officers, agents or employees. These interpretations are also subject to our general terms and conditions set out in our current Price Schedule.

Comments

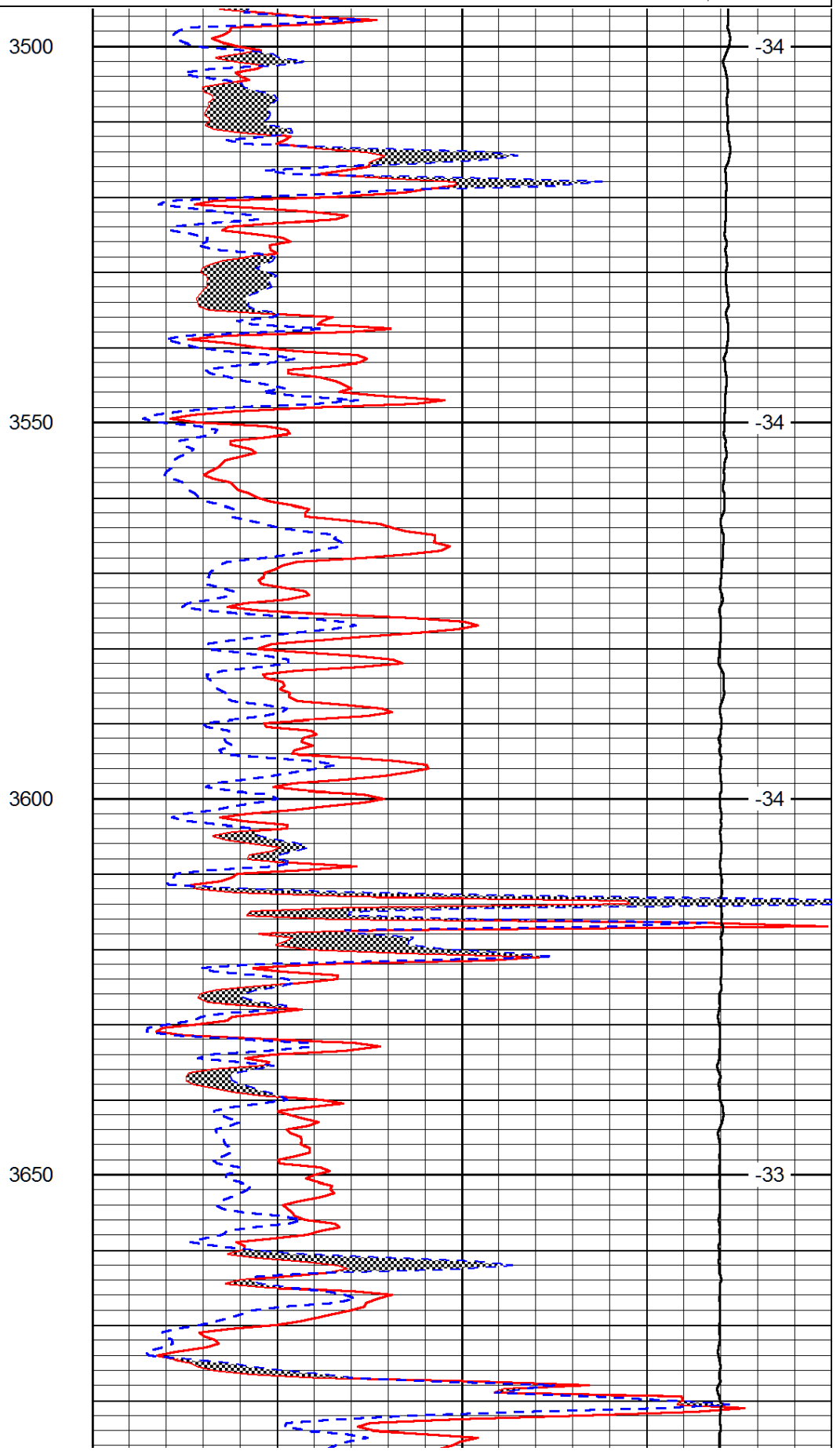
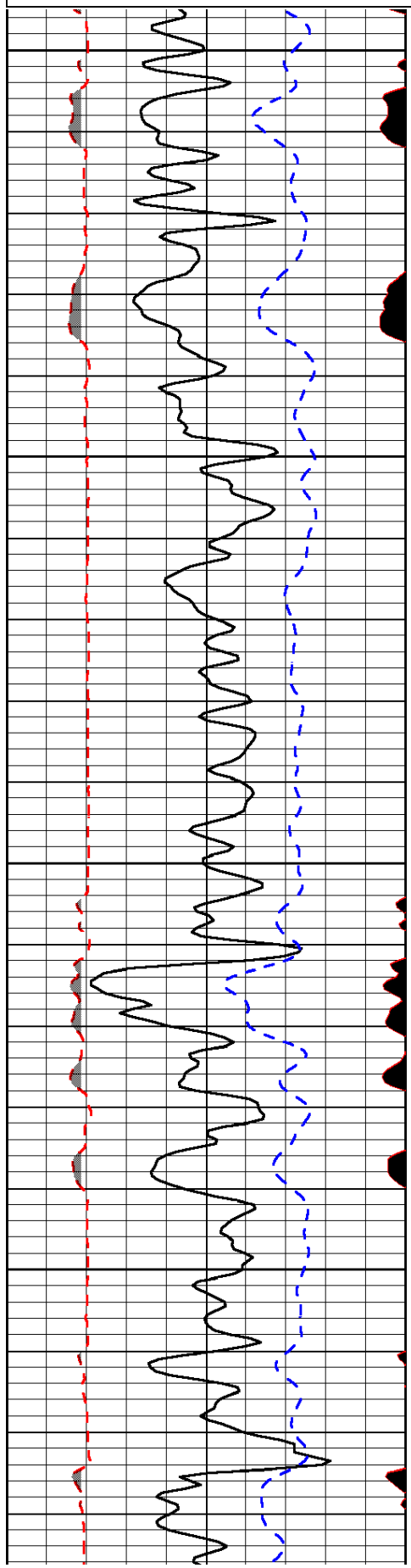
Thank you for using Log-Tech, Inc.
 (785) 625-3858

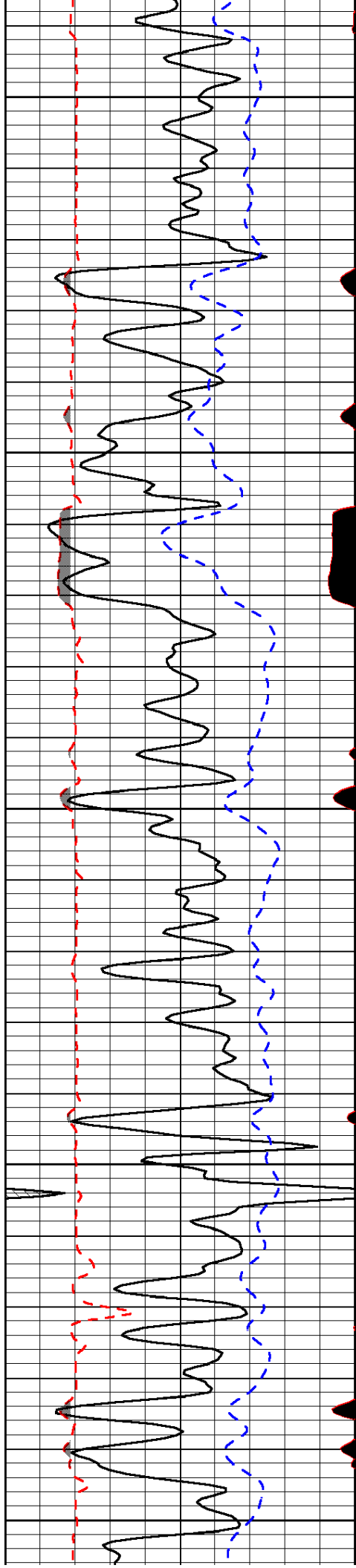
 McDonald Kansas
 North to 23 Rd, East to Farmstead, North and East Into

Database File: berexco_michael_6_22hd.db
 Dataset Pathname: RAG/berrag
 Presentation Format: micro
 Dataset Creation: Sat Dec 07 23:22:52 2013
 Charted by: Depth in Feet scaled 1:240

0	Gamma Ray (GAPI)	150
6	MCAL (in)	16
2.875	Mud Cake (in)	7.875
-200	SP (mV)	0

0	Micro Inverse 1 X 1 (Ohm-m)	40
0	Micro Normal 2" (Ohm-m)	40
10000	Line Weight (lb)	0
		LSPD (ft/min)





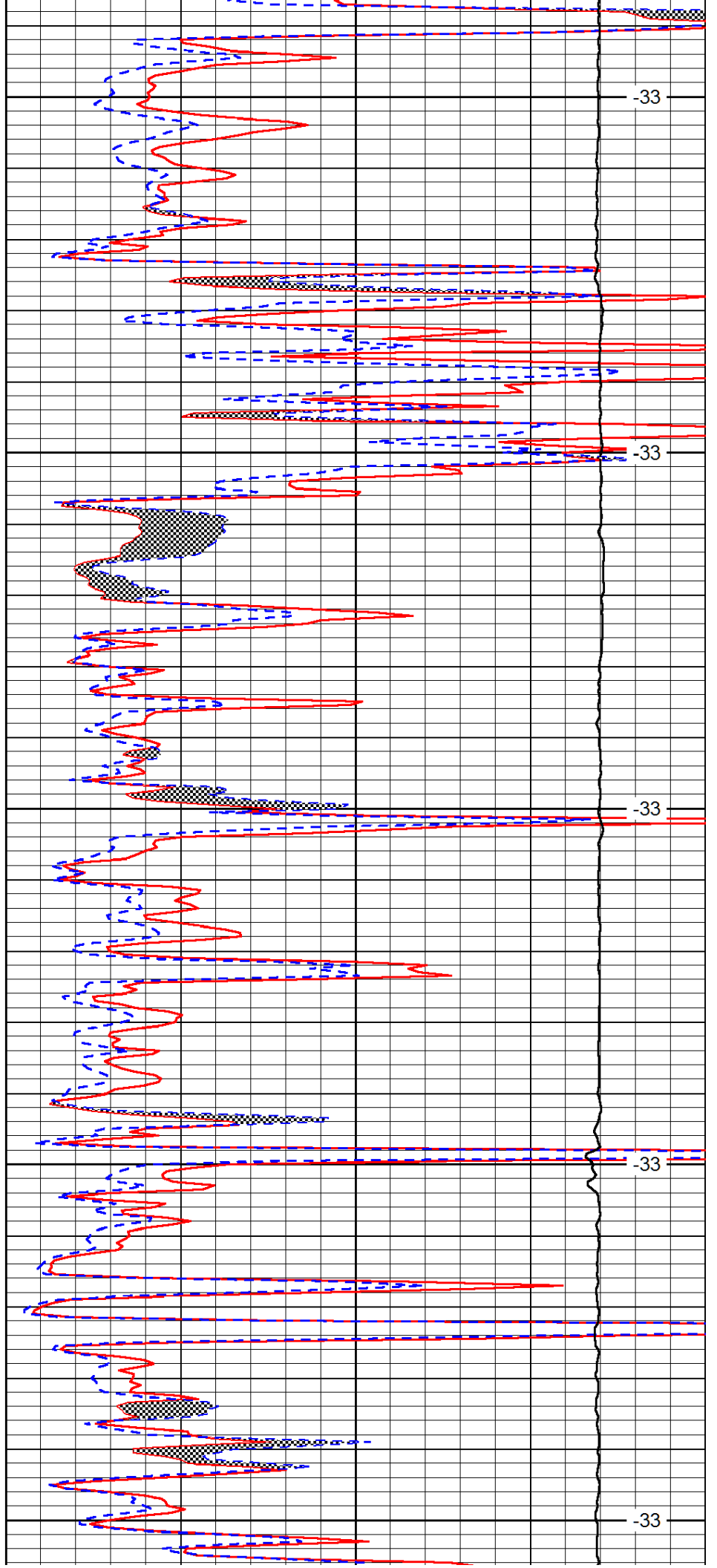
3700

3750

3800

3850

3900



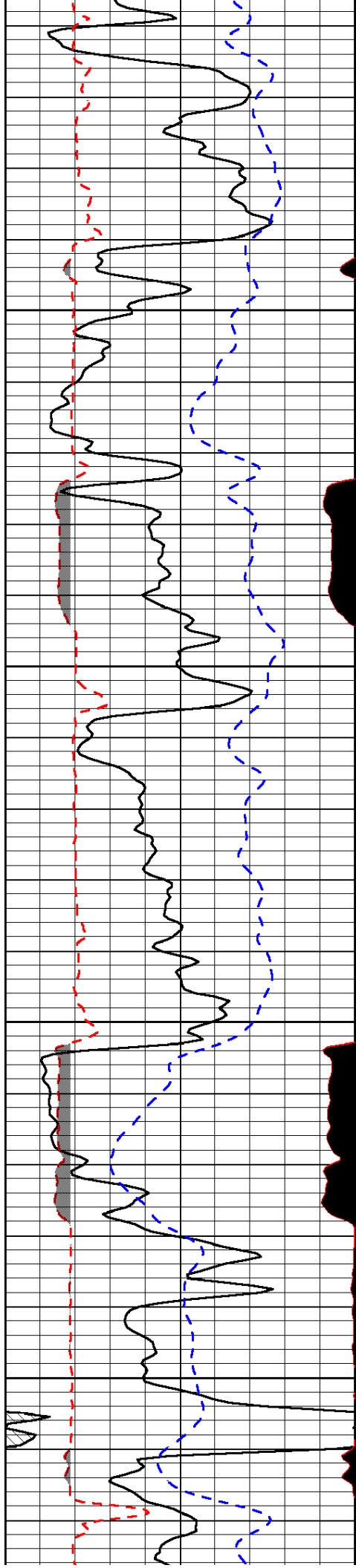
-33

-33

-33

-33

-33

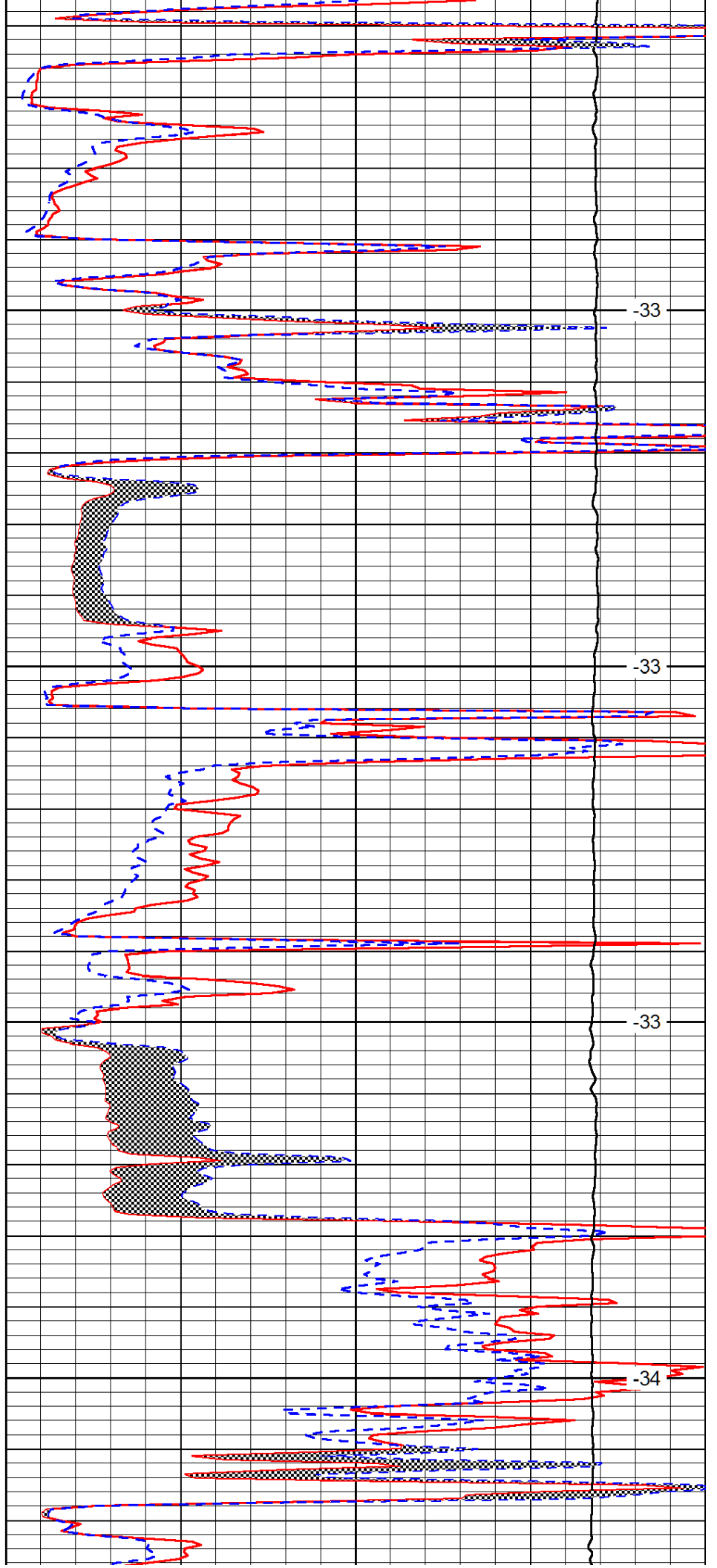


3950

4000

4050

4100

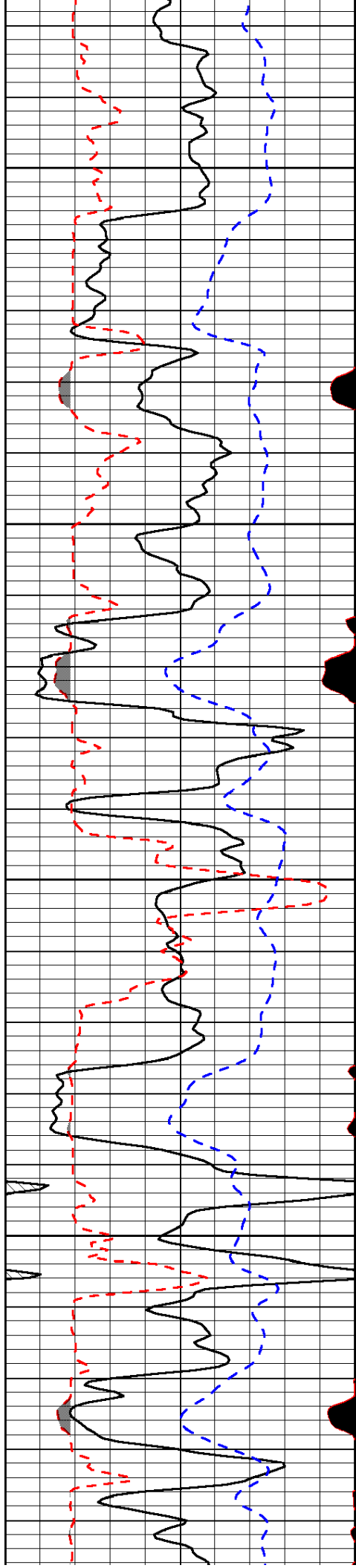


-33

-33

-33

-34

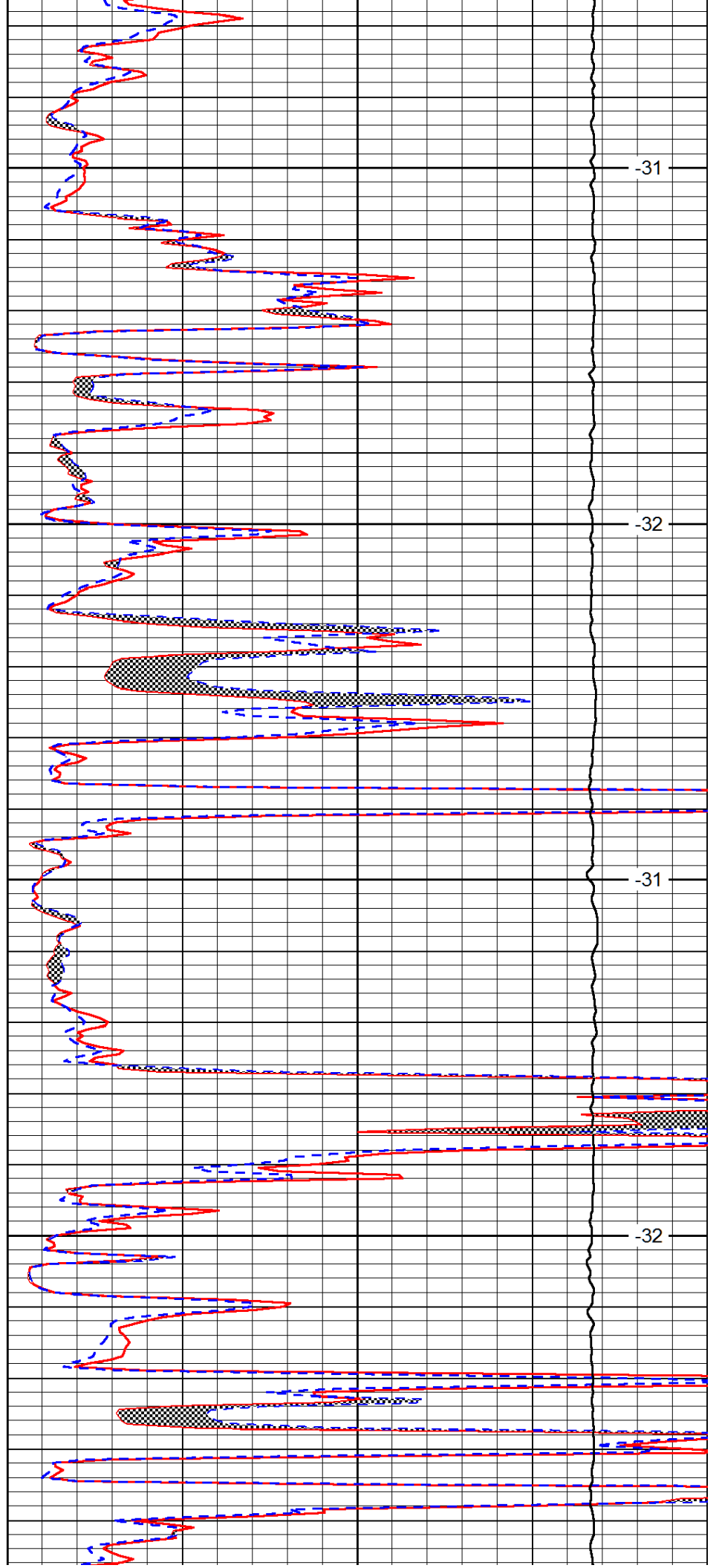


4150

4200

4250

4300

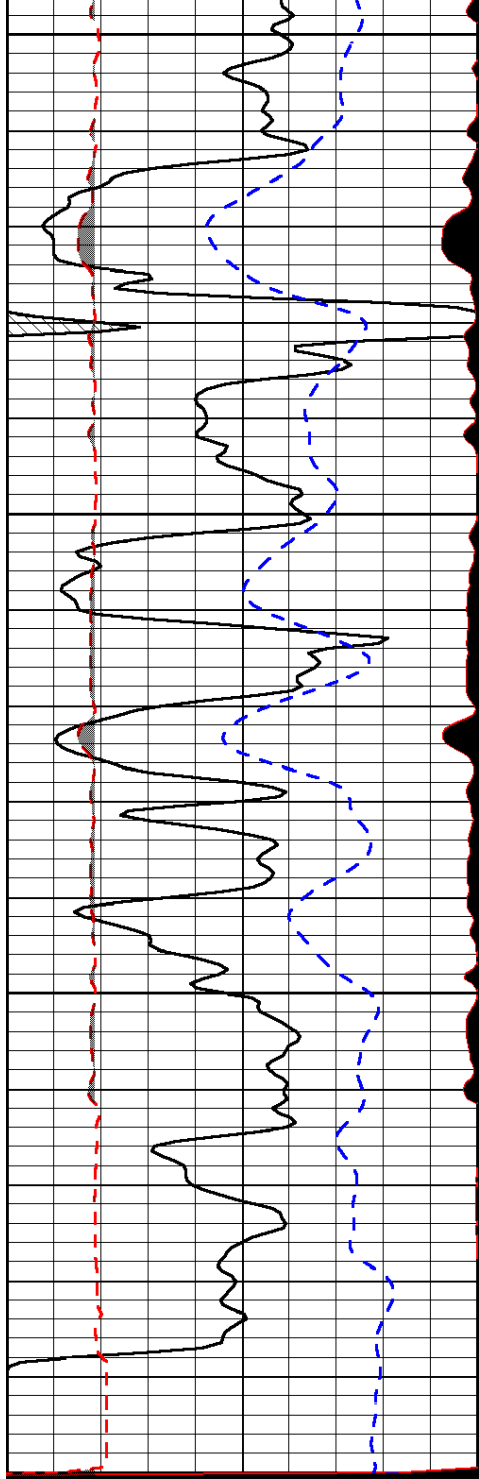


-31

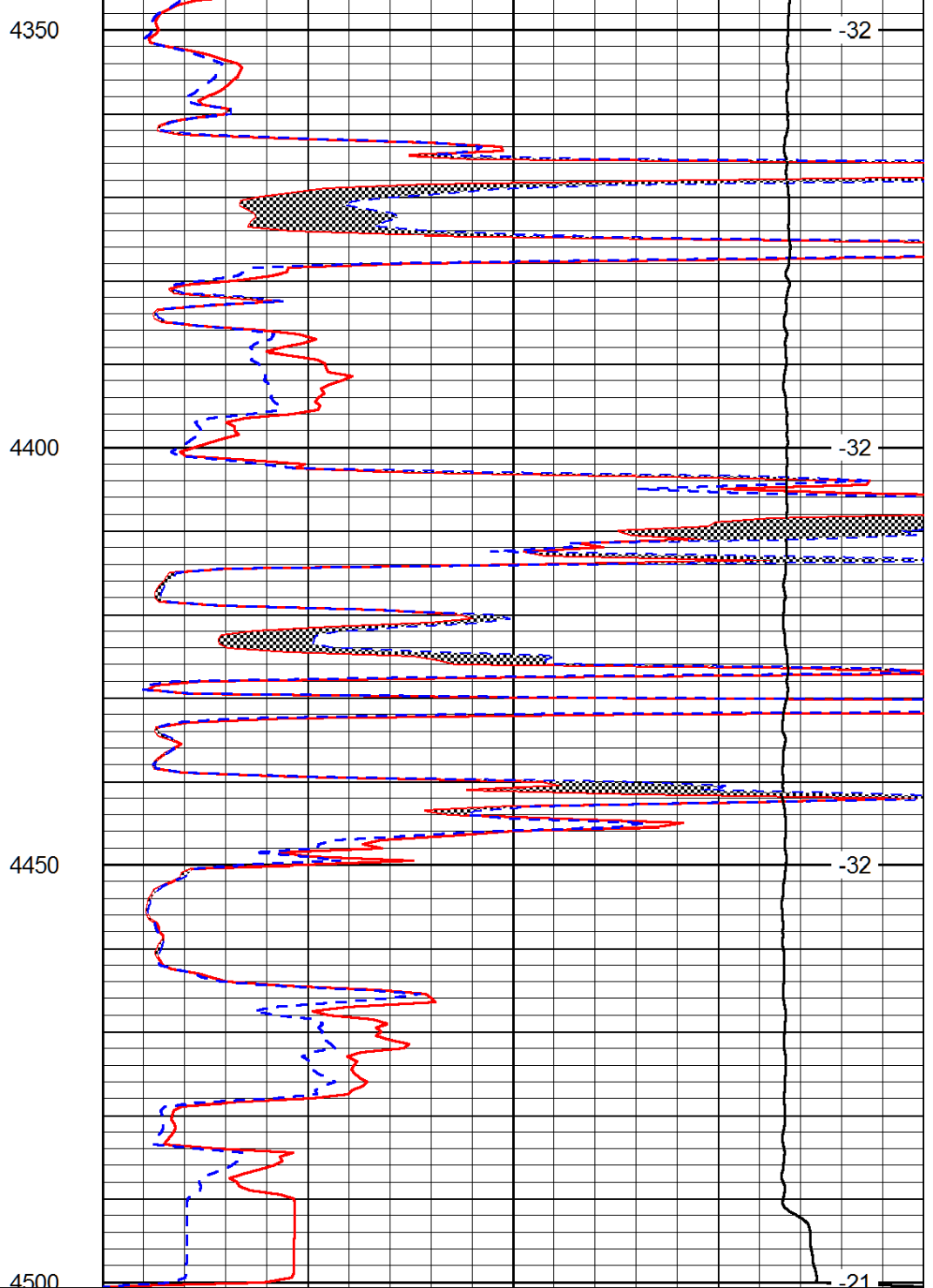
-32

-31

-32



0	Gamma Ray (GAPI)	150
6	MCAL (in)	16
2.875	Mud Cake (in)	7.875
-200	SP (mV)	0



0	Micro Inverse 1 X 1 (Ohm-m)	40
0	Micro Normal 2" (Ohm-m)	40
10000	Line Weight (lb)	0

LSPD
(ft/min)