



Pioneer Energy Services

Radiation Guard Log

15-153-20,963-00-00

Company **Berexco, LLC**
 Well **Michael No. 6-22**
 Field **East Fork**
 County **Rawlins** State **Kansas**

Location **NE-SW-NE
 1630' FNL & 1500' FEL**

Sec: **22** Twp: **1S** Rge: **36W**

Permanent Datum **Ground Level** Elevation **3217**
 Log Measured From **Kelly Bushing** 13 Ft. Above Perm. Datum
 Drilling Measured From **Kelly Bushing**

Other Services
MEL
 Elevation
K.B. 3230
D.F. 3217
G.L. 3217

Date	12/7/13
Run Number	One
Depth Driller	4490
Depth Logger	4492
Bottom Logged Interval	4491
Top Log Interval	300
Casing Driller	8.625 @ 310
Casing Logger	302
Bit Size	7.875
Type Fluid in Hole	Chemical
Salinity, ppm CL	1,600
Density / Viscosity	8.9 172
pH / Fluid Loss	8.0 6.4
Source of Sample	Flowline
Rm @ Meas. Temp	.56 @ 49
Rmf @ Meas. Temp	.42 @ 49
Rmc @ Meas. Temp	.76 @ 49
Source of Rmf / Rmc	Charts
Rm @ BHT	.23 @ 121
Operating Rig Time	4 Hours
Max Rec. Temp. F	121
Equipment Number	108
Location	Hays
Recorded By	J. Henrickson
Witnessed By	Pete Vollmer

<<< Fold Here >>>

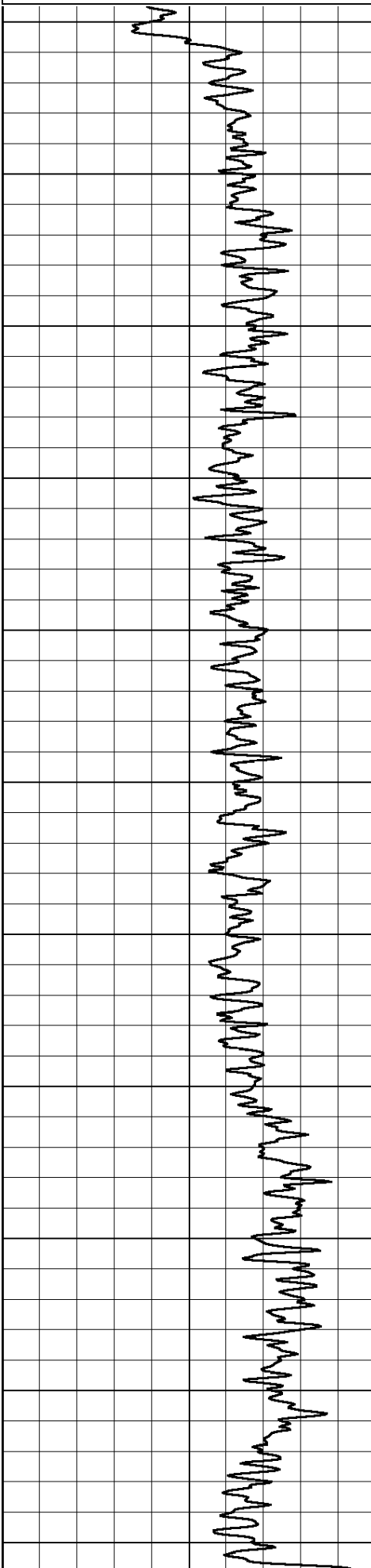
All interpretations are opinions based on inferences from electrical or other measurements and we cannot and do not guarantee the accuracy or correctness of any interpretation, and we shall not, except in the case of gross or willful negligence on our part, be liable or responsible for any loss, costs, damages, or expenses incurred or sustained by anyone resulting from any interpretation made by any of our officers, agents or employees. These interpretations are also subject to our general terms and conditions set out in our current Price Schedule.

Comments

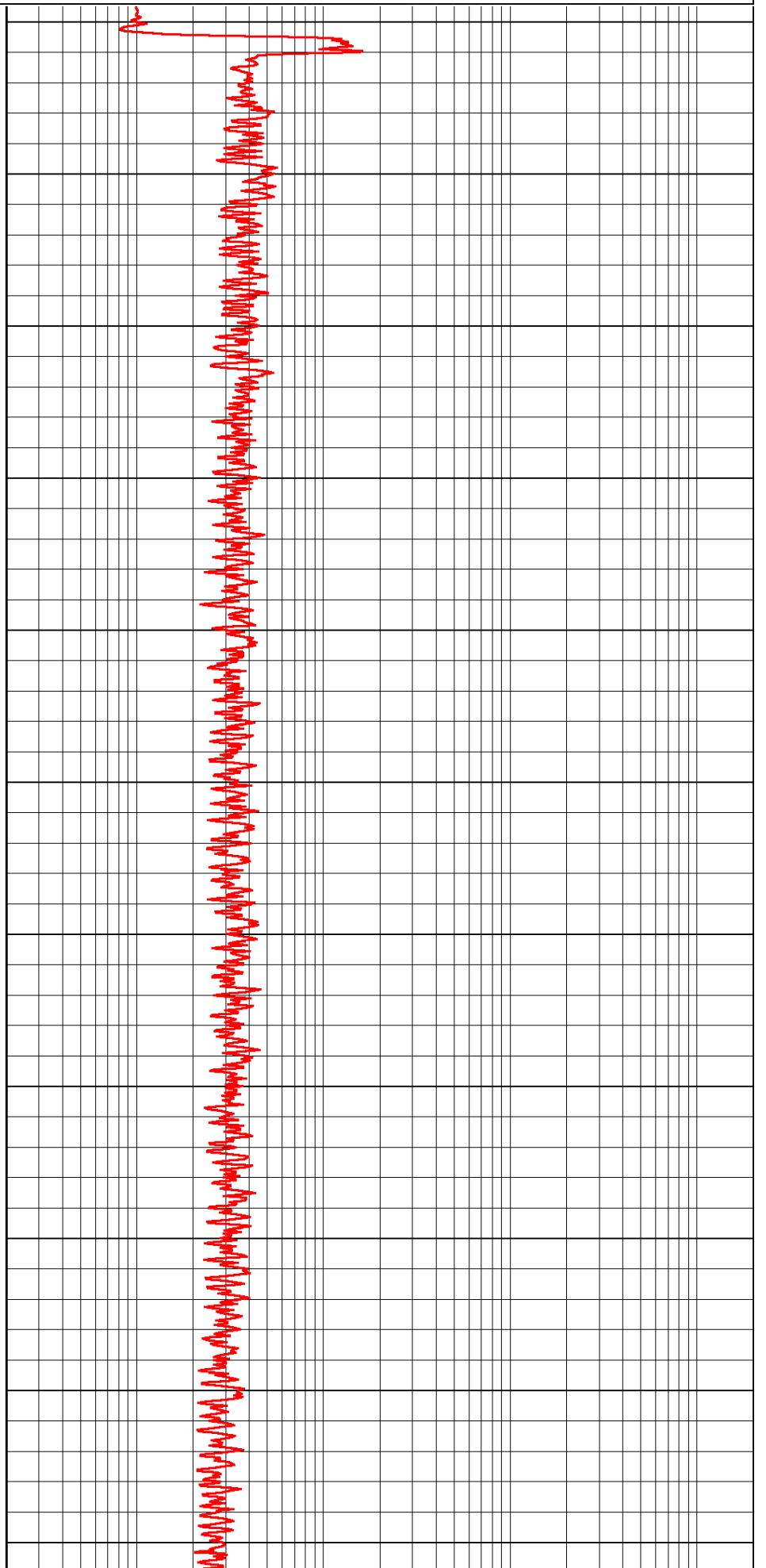
Thank you for using Log-Tech, Inc.
 (785) 625-3858

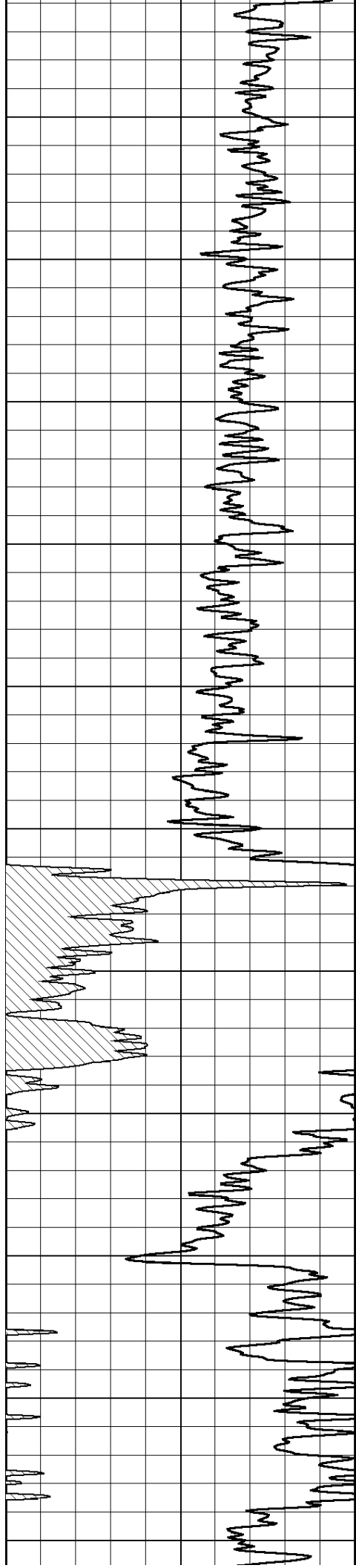
McDonald Kansas
 North to 23 Rd, East to Farmstead, North and East Into

Database File: berexco_michael_6_22hd.db
 Dataset Pathname: RAG/berrag
 Presentation Format: rag2in
 Dataset Creation: Sat Dec 07 23:22:52 2013
 Charted by: Depth in Feet scaled 1:600



300
350
400
450
500
550
600
650
700
750
800





850

900

950

1000

1050

1100

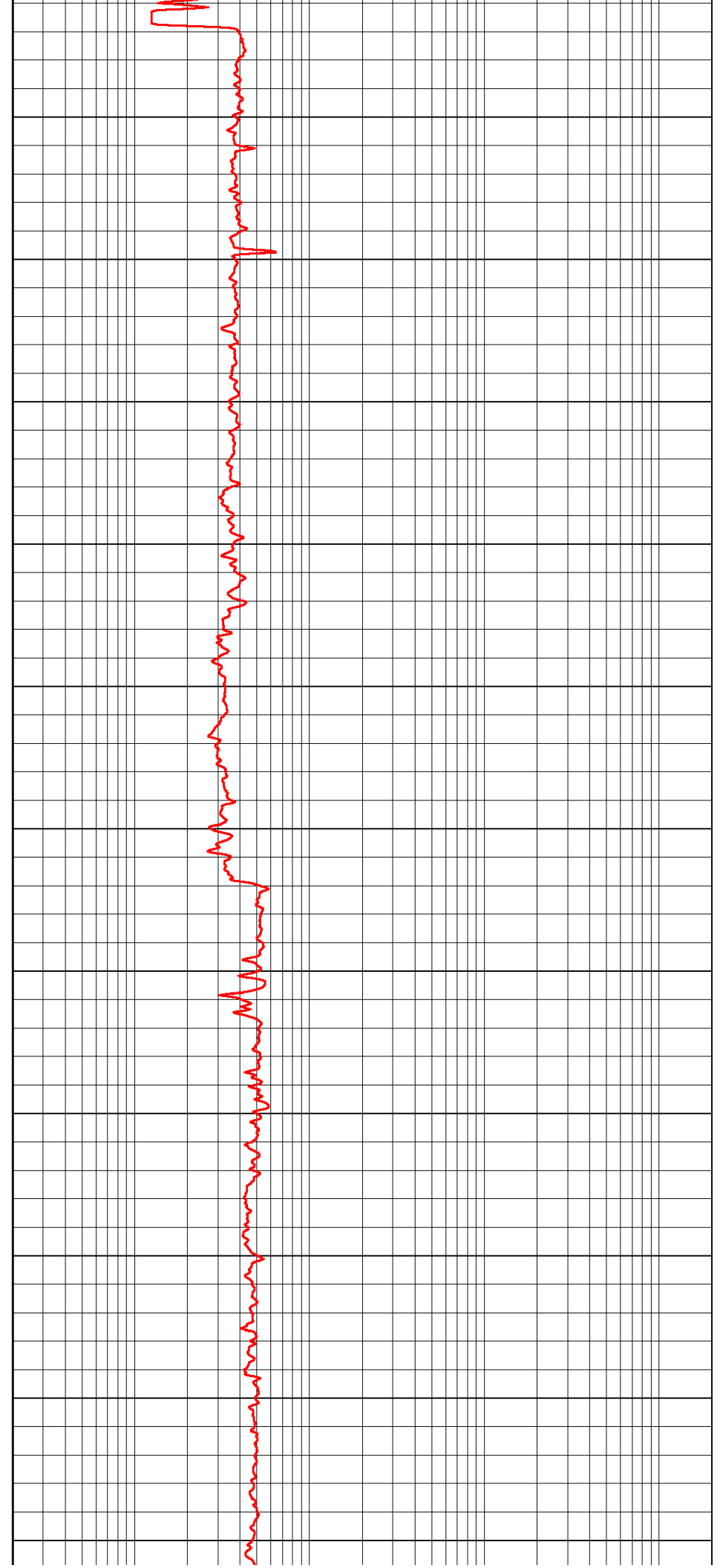
1150

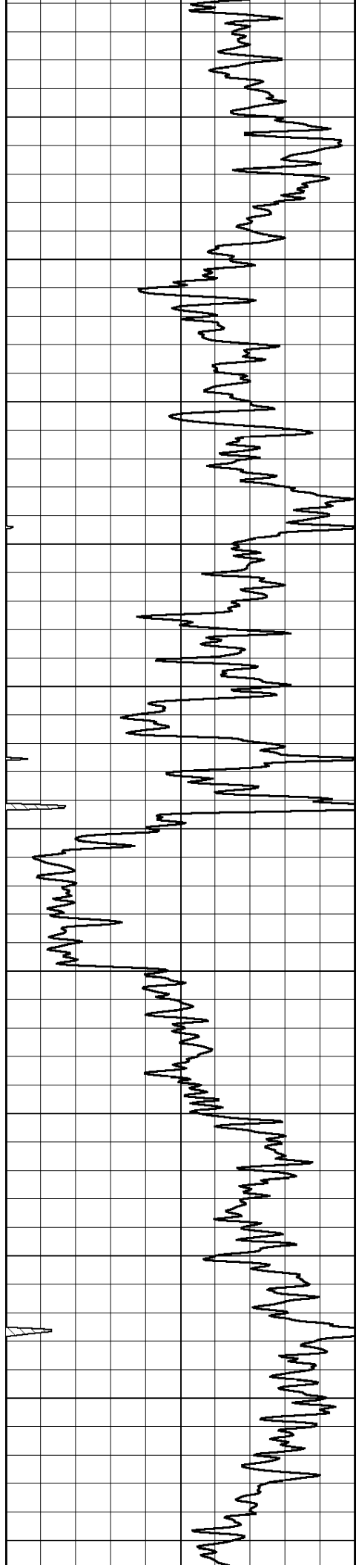
1200

1250

1300

1350





1400

1450

1500

1550

1600

1650

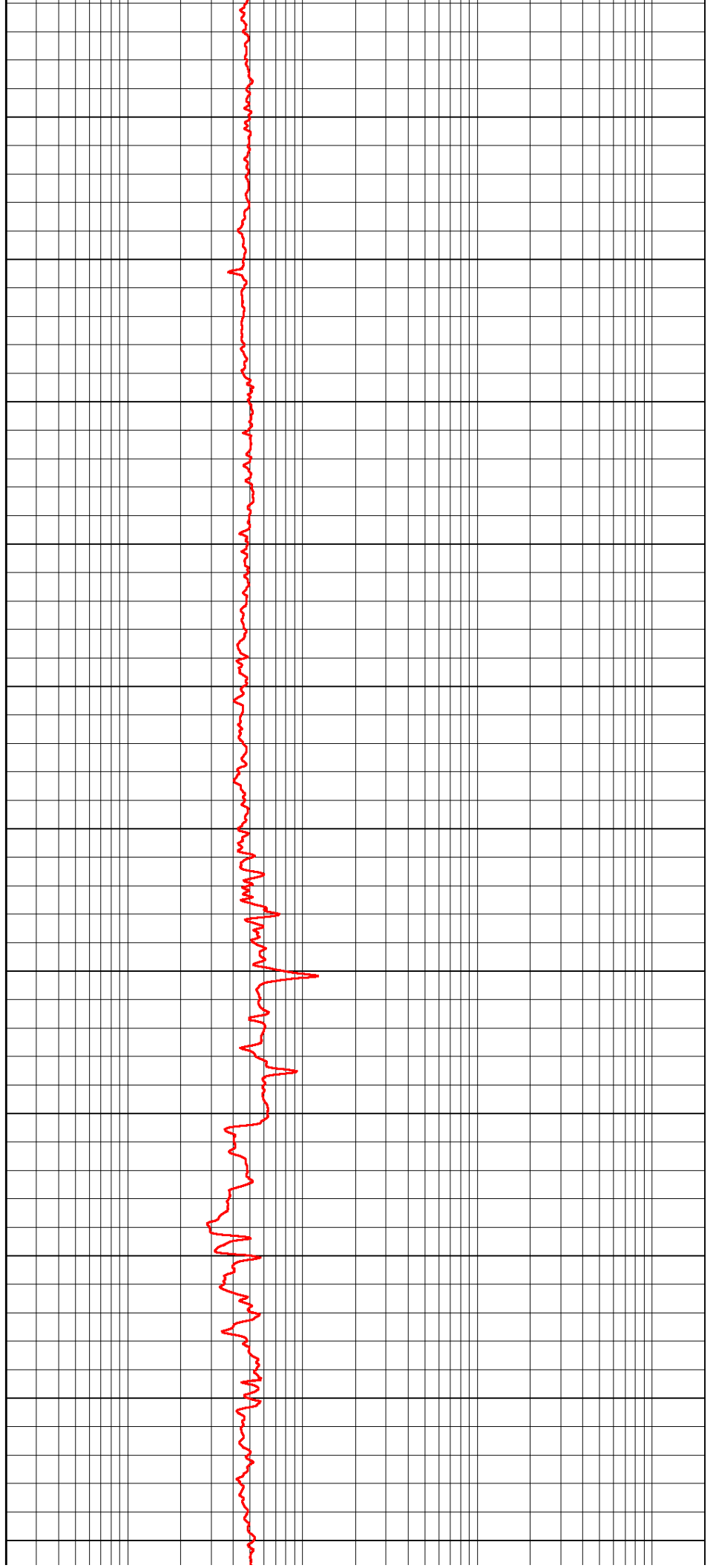
1700

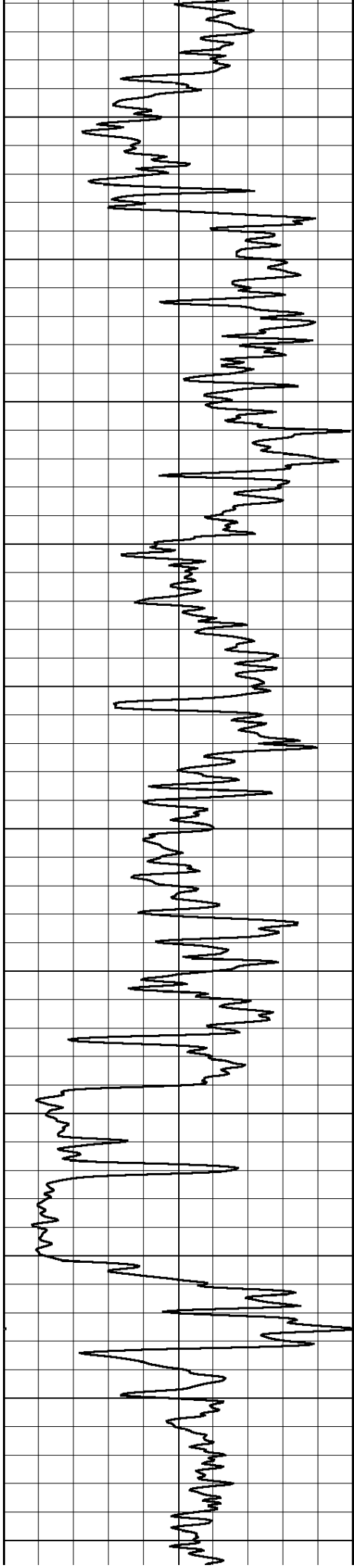
1750

1800

1850

1900





1950

2000

2050

2100

2150

2200

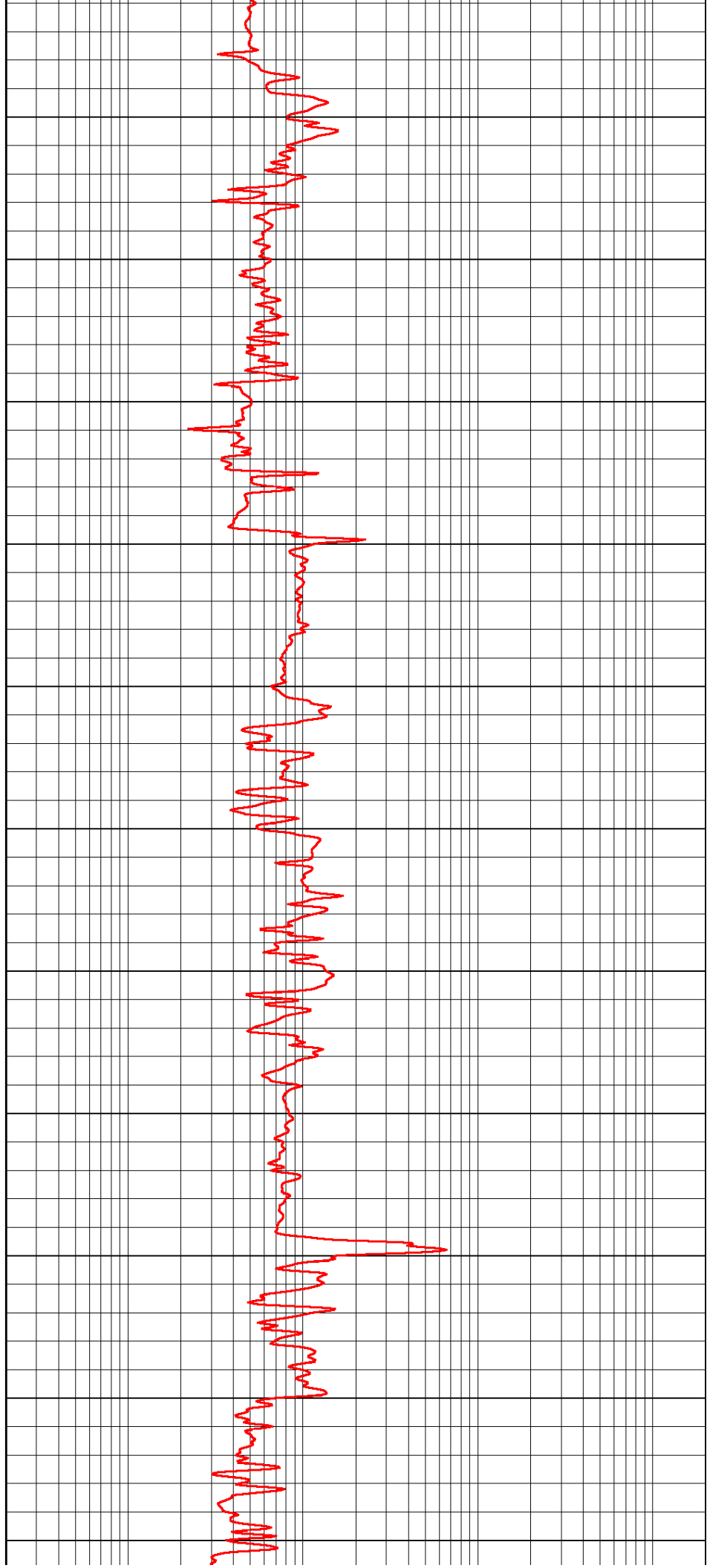
2250

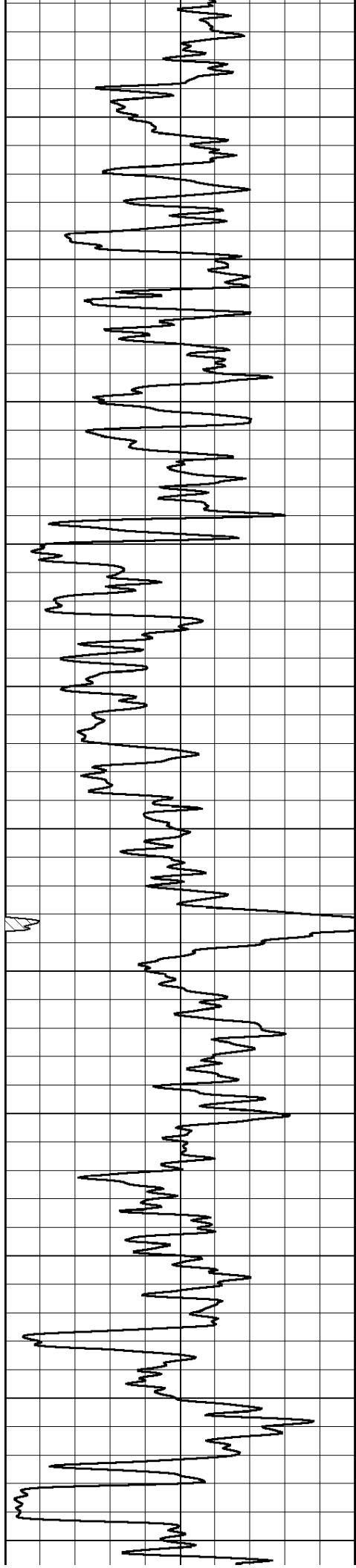
2300

2350

2400

2450





2500

2550

2600

2650

2700

2750

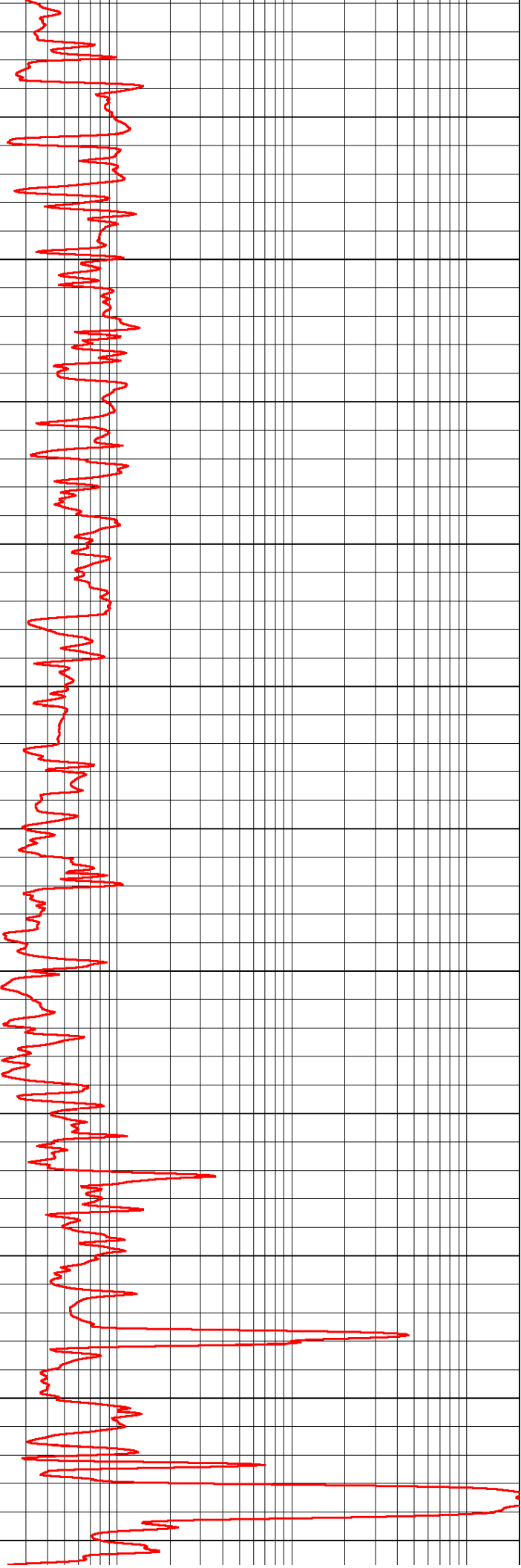
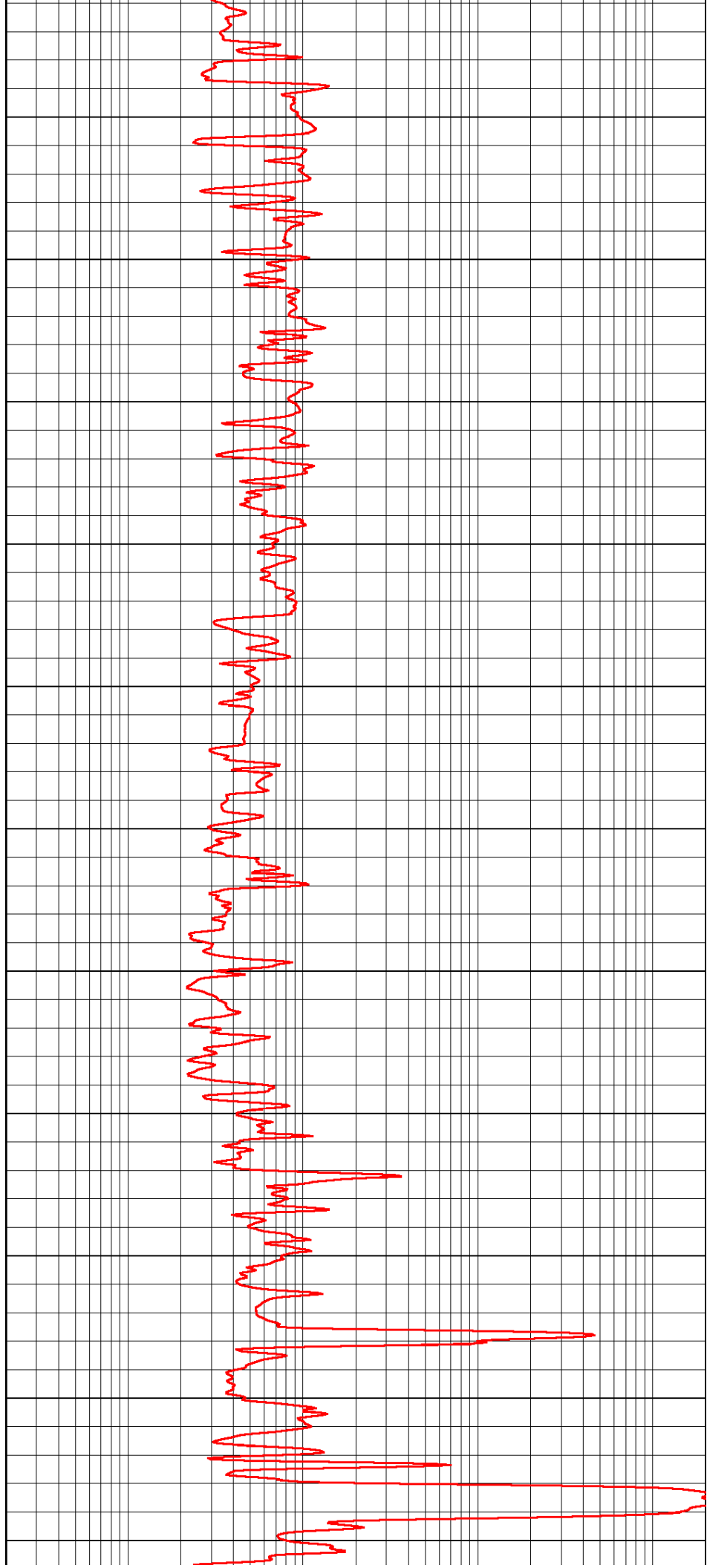
2800

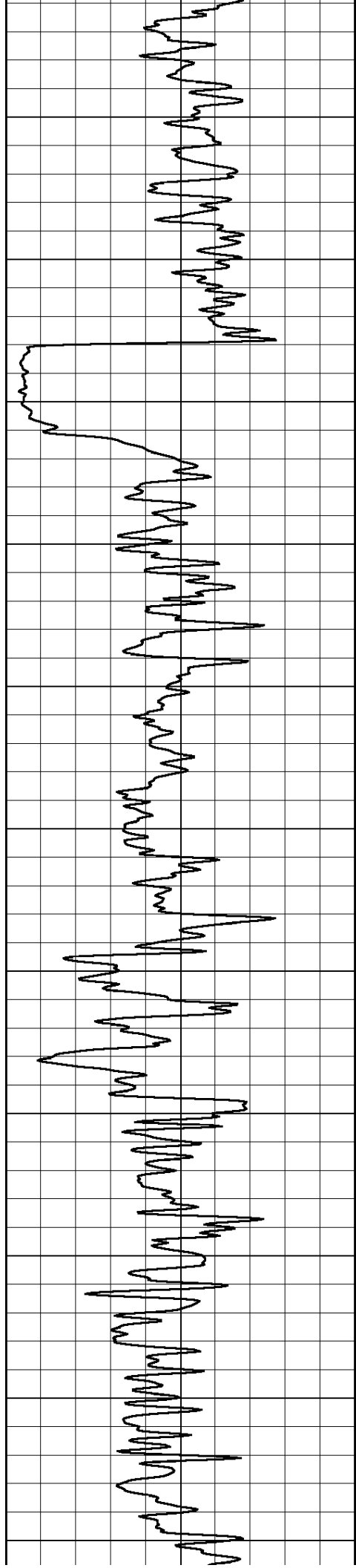
2850

2900

2950

3000





3050

3100

3150

3200

3250

3300

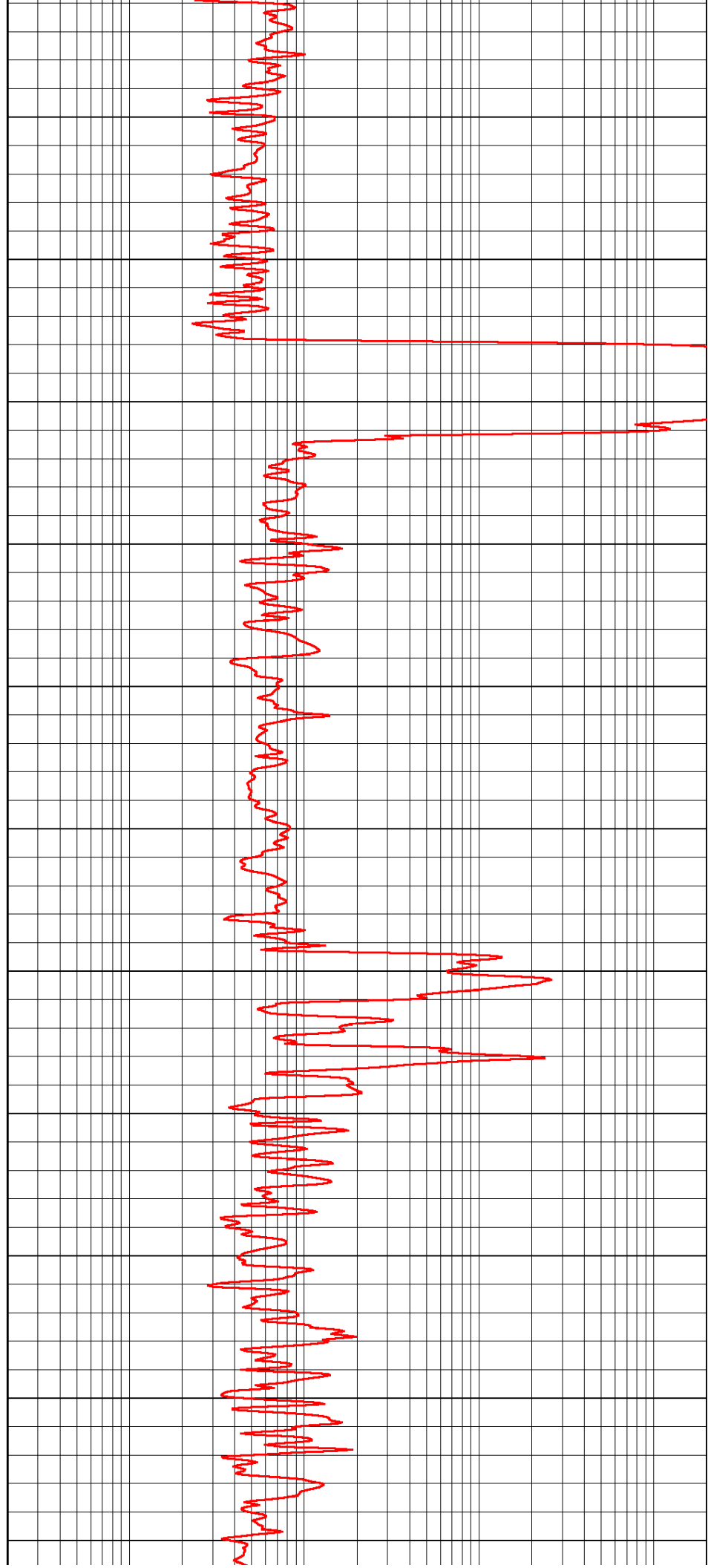
3350

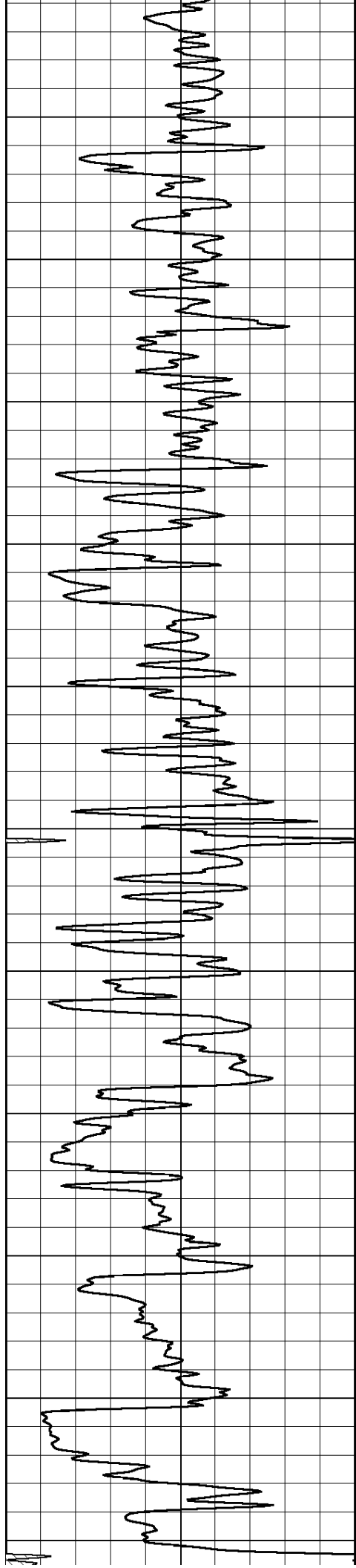
3400

3450

3500

3550





3600

3650

3700

3750

3800

3850

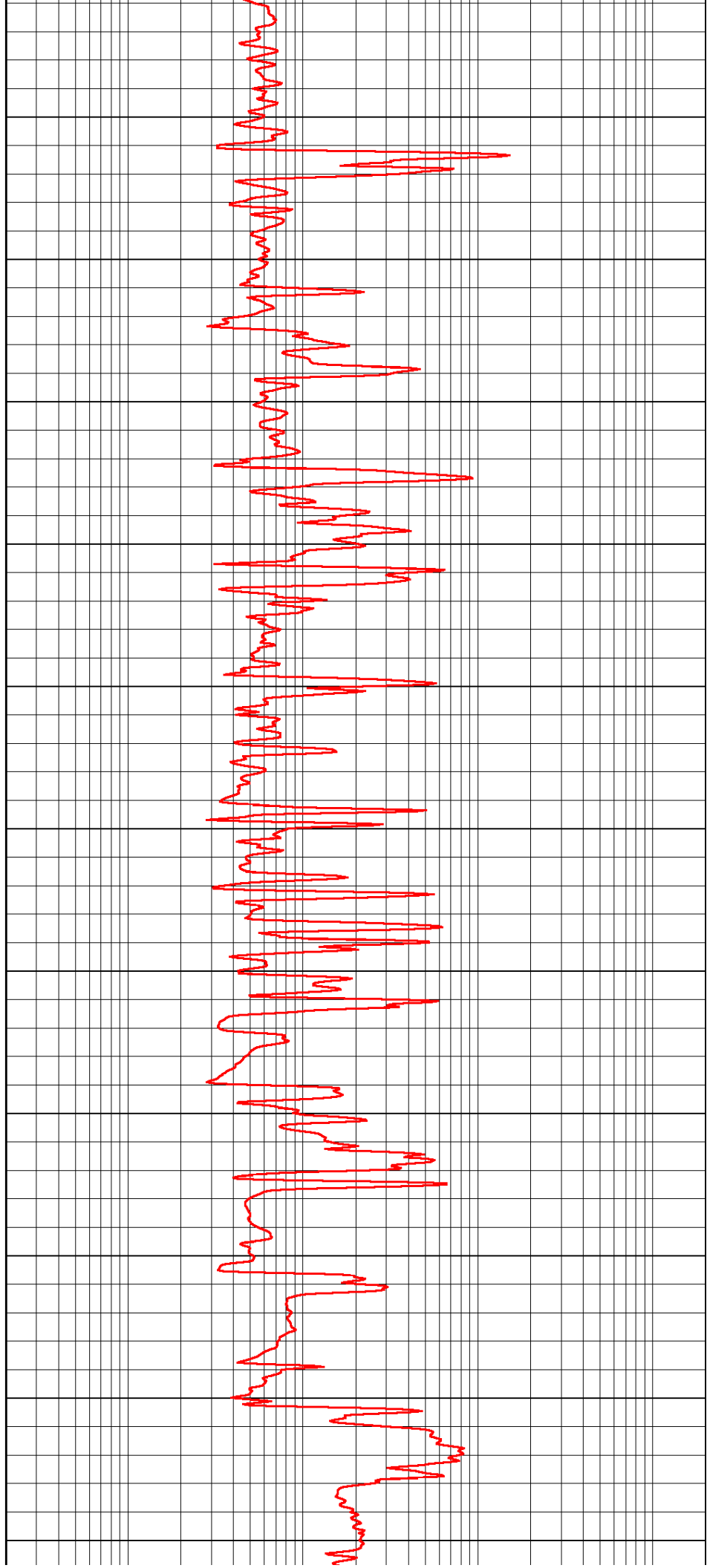
3900

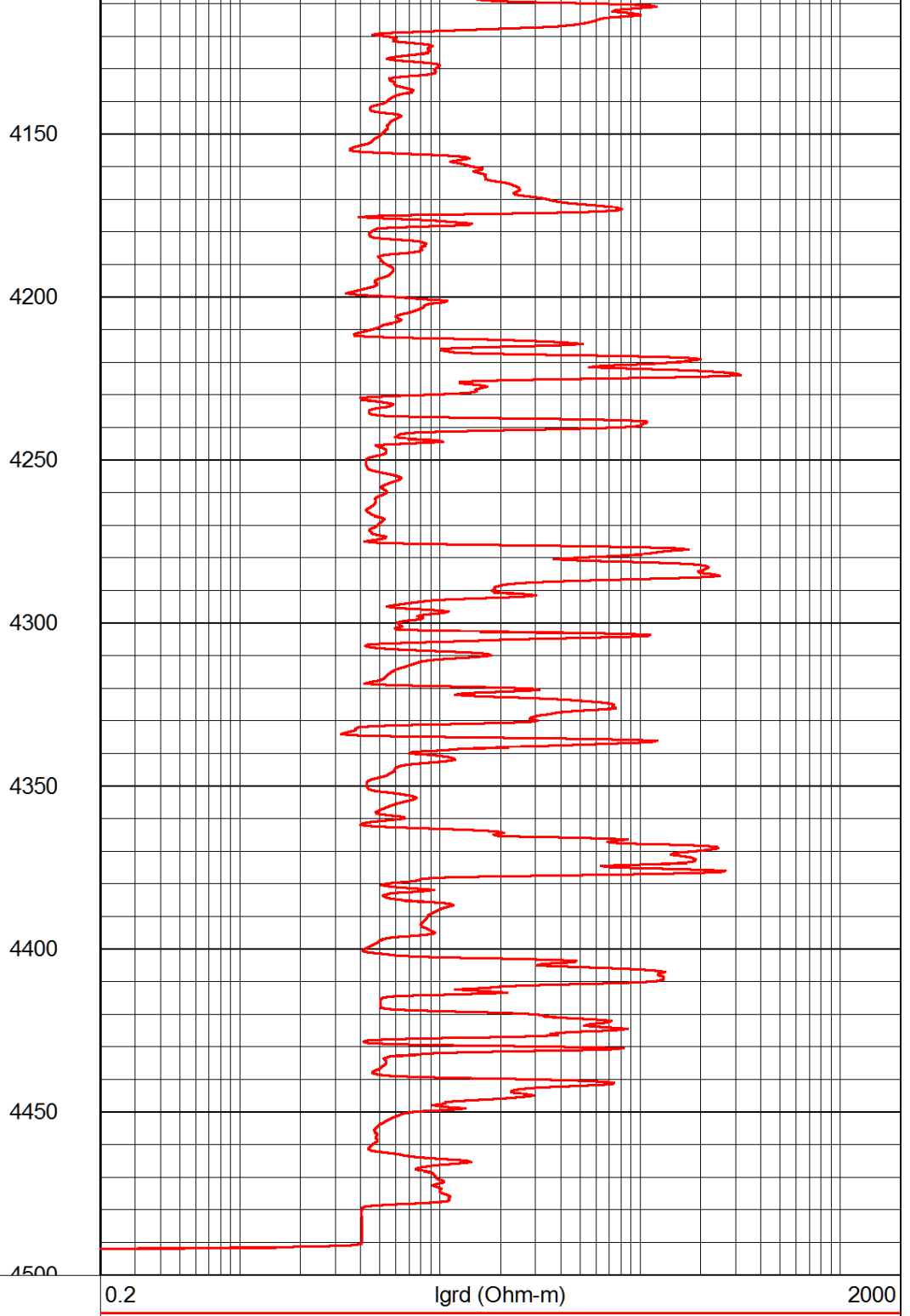
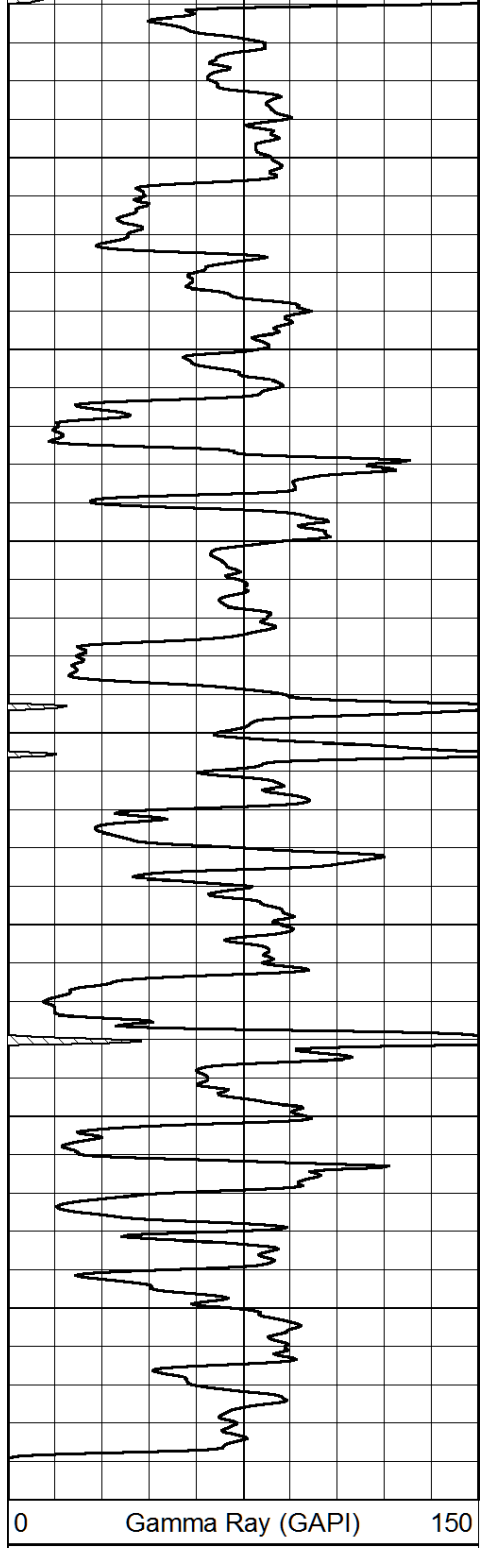
3950

4000

4050

4100



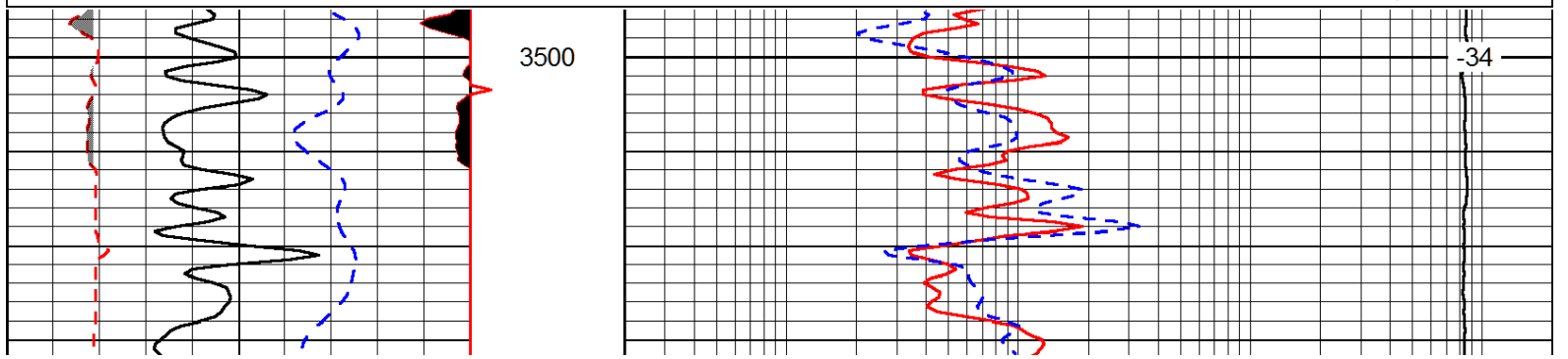
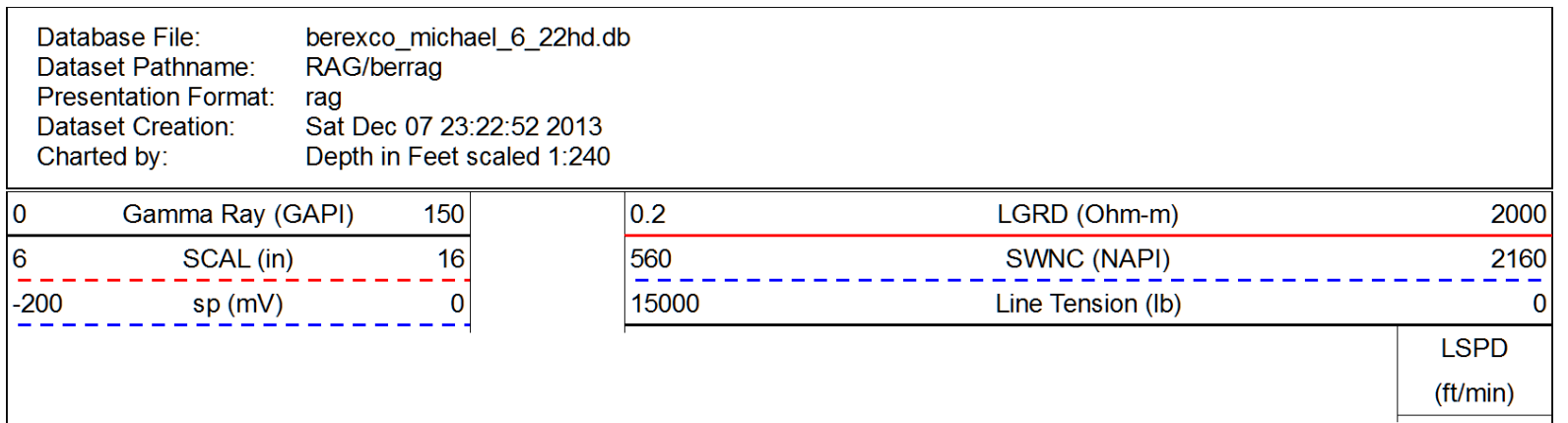
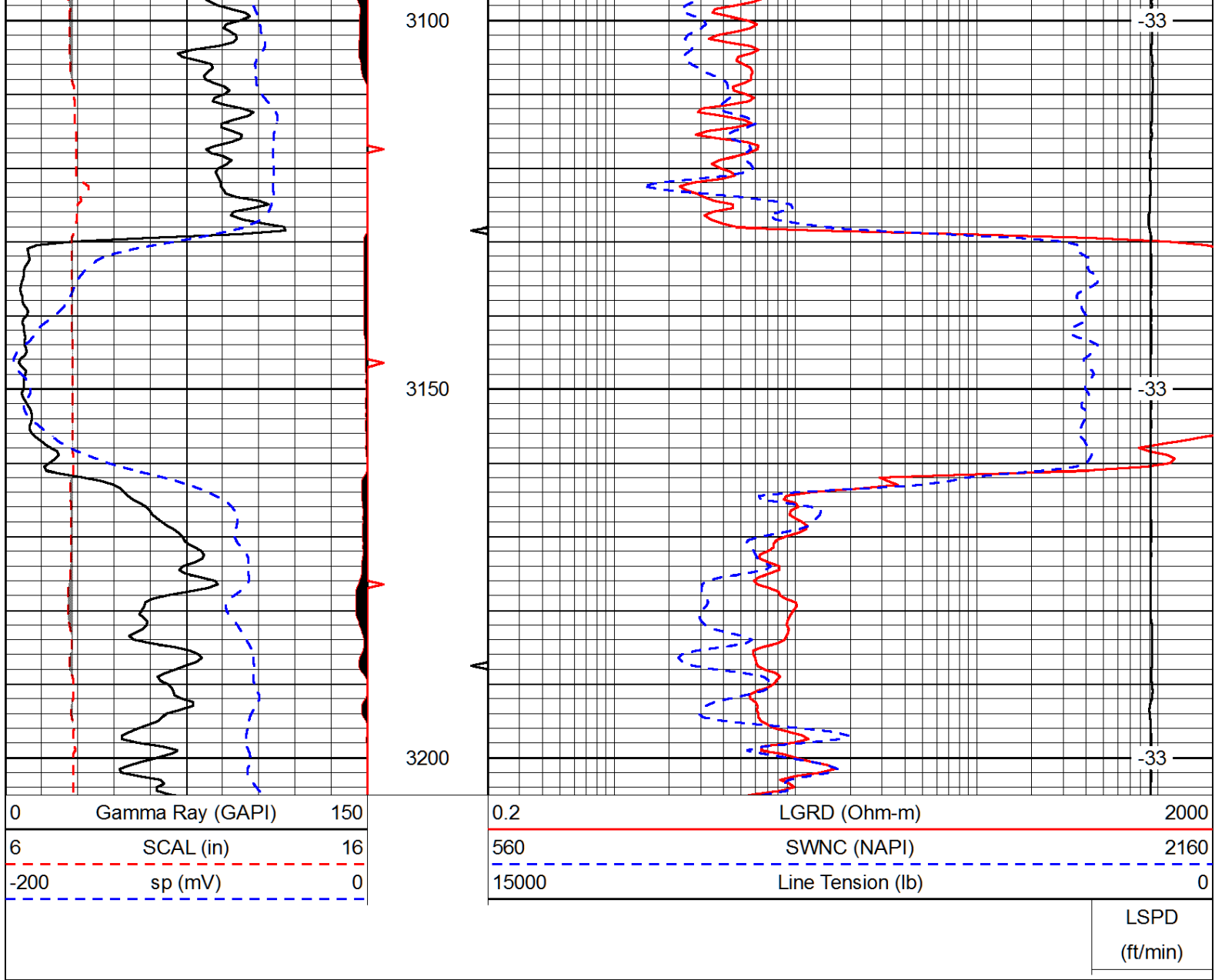


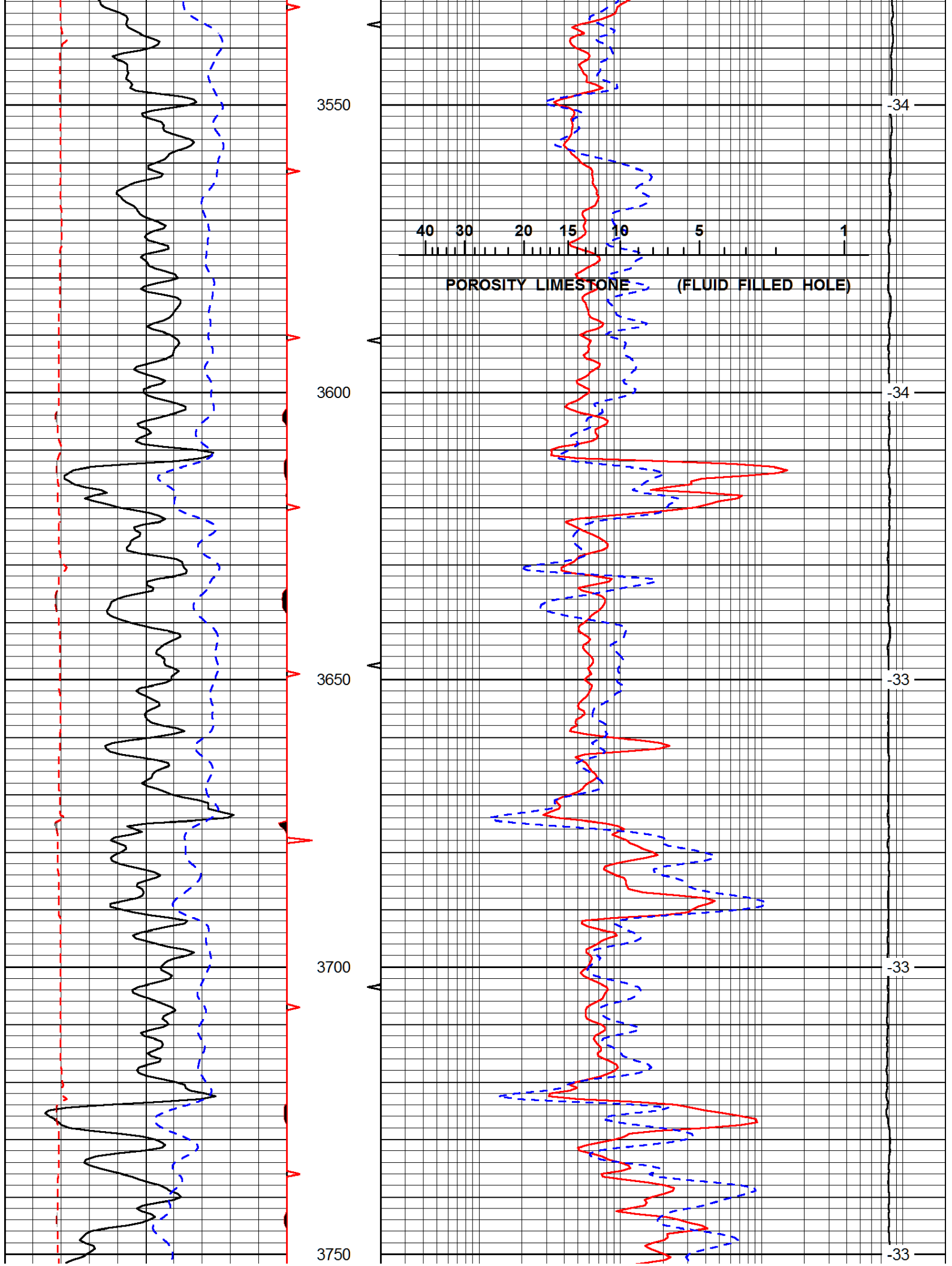
Database File: berexco_michael_6_22hd.db
 Dataset Pathname: RAG/berrag
 Presentation Format: rag
 Dataset Creation: Sat Dec 07 23:22:52 2013
 Charted by: Depth in Feet scaled 1:240

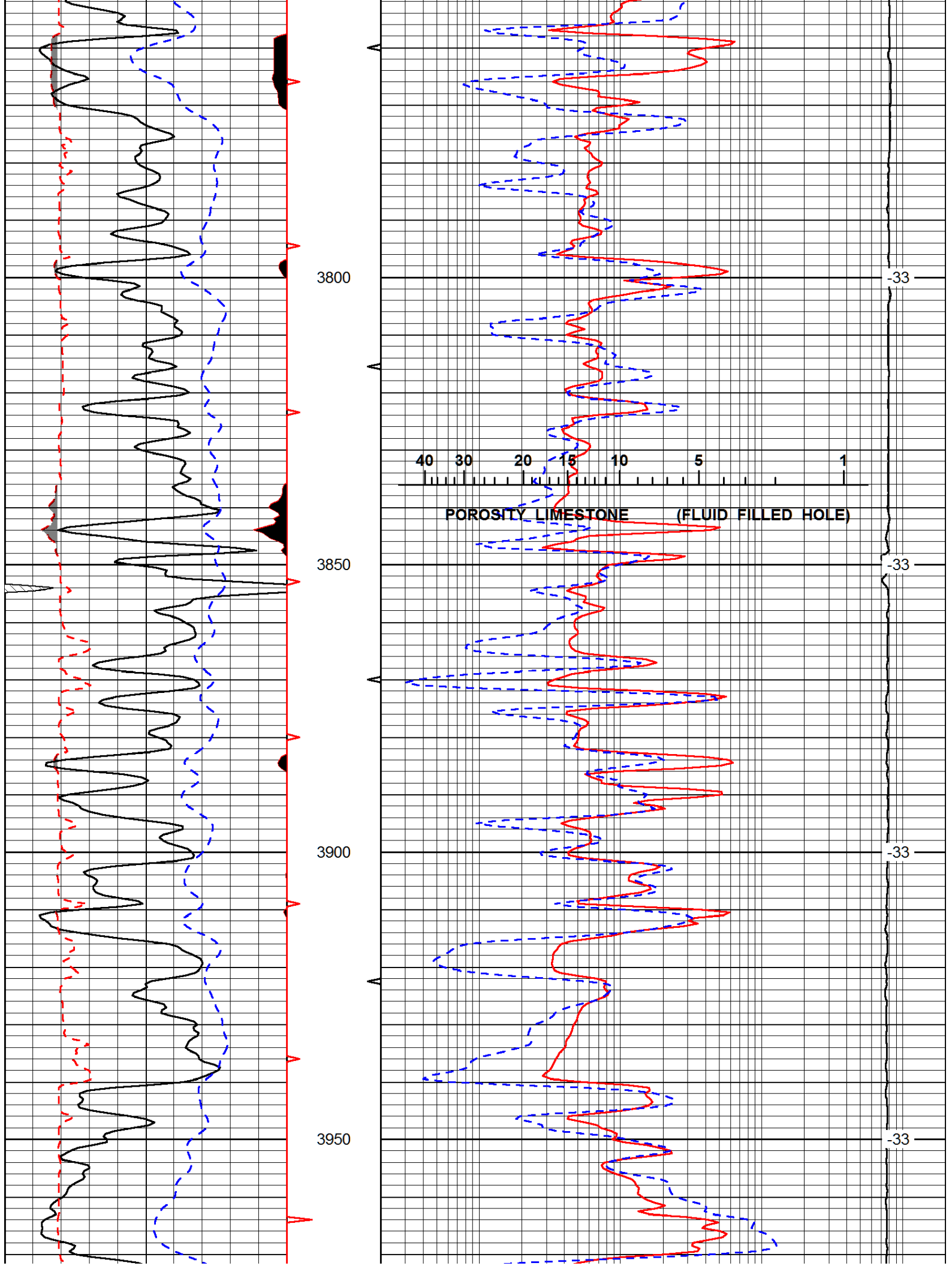
0	Gamma Ray (GAPI)	150
6	SCAL (in)	16
-200	sp (mV)	0

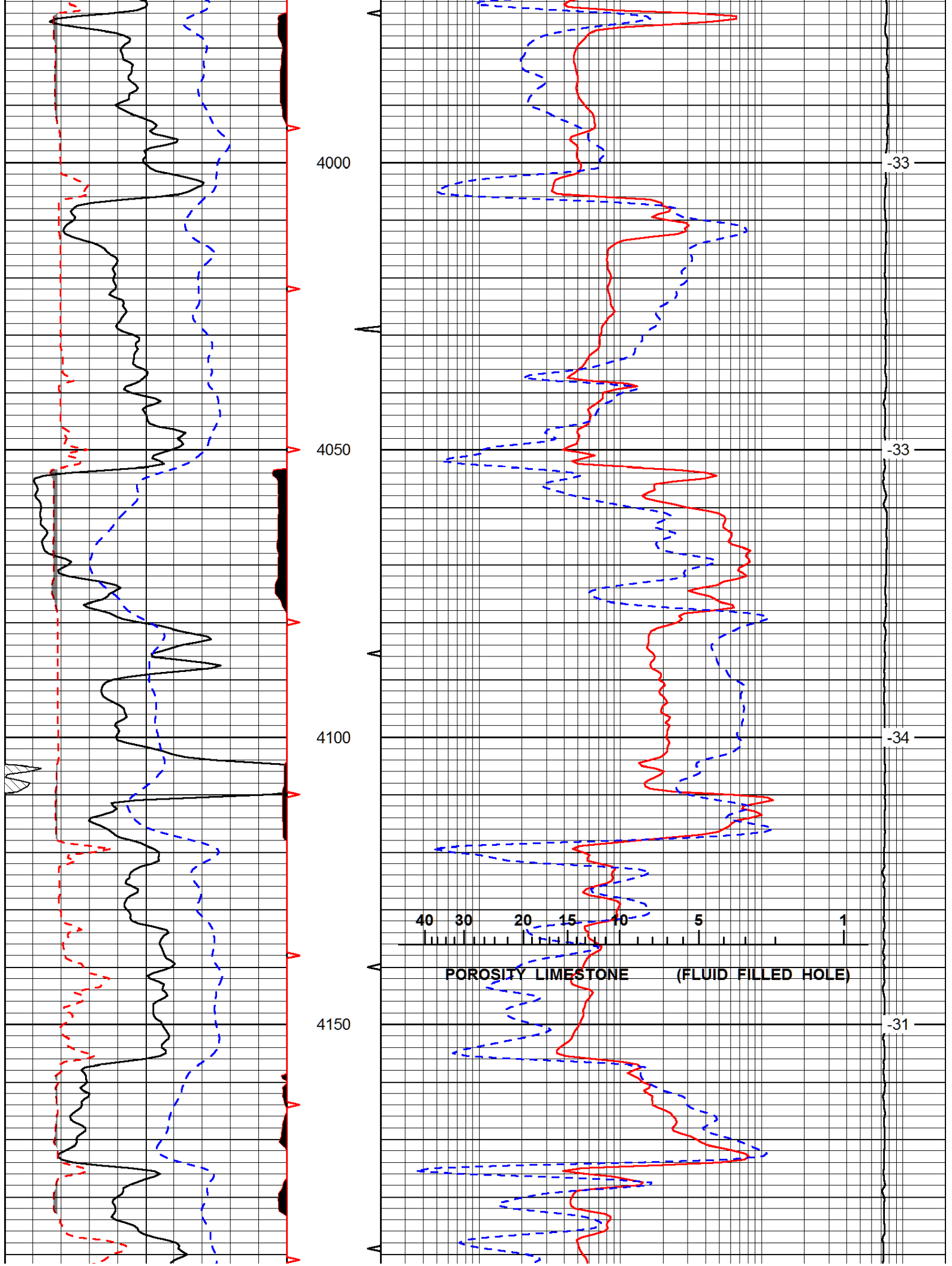
0.2	LGRD (Ohm-m)	2000
560	SWNC (NAPI)	2160
15000	Line Tension (lb)	0

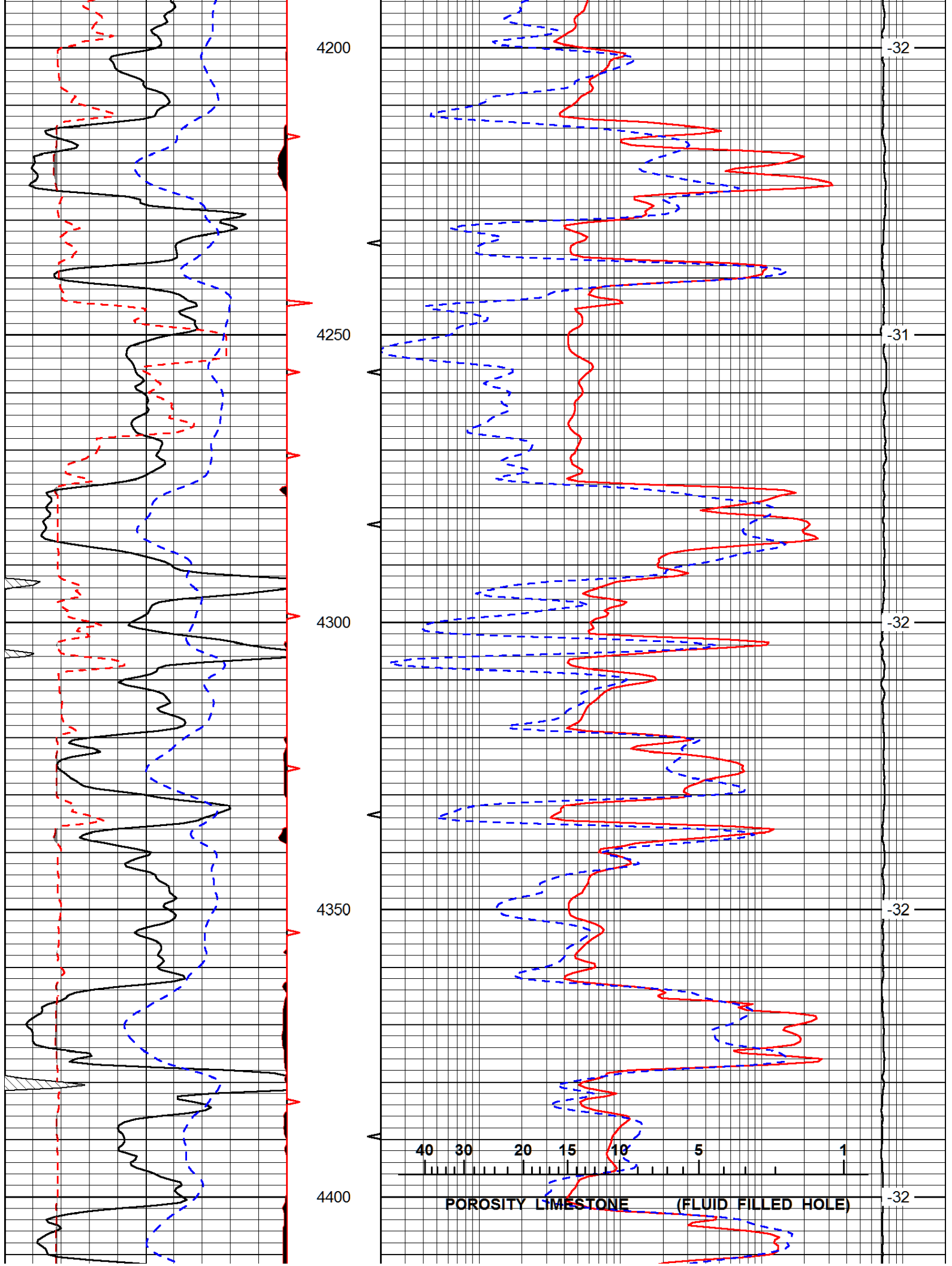
LSPD
(ft/min)

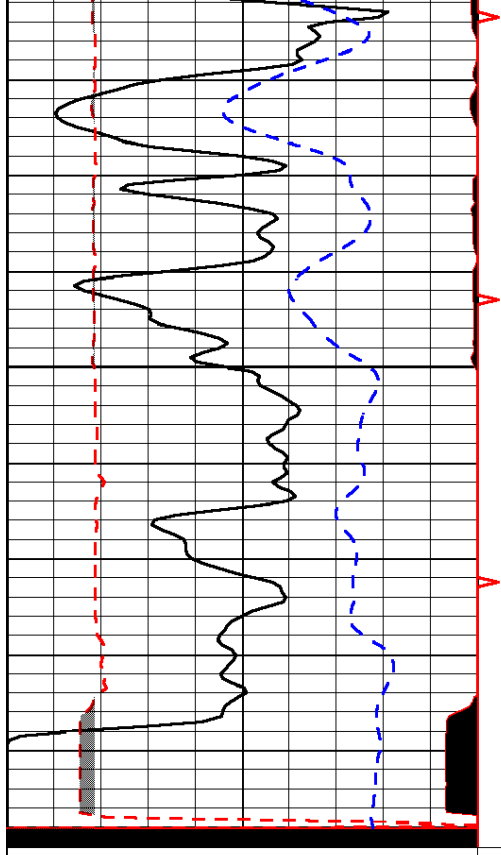




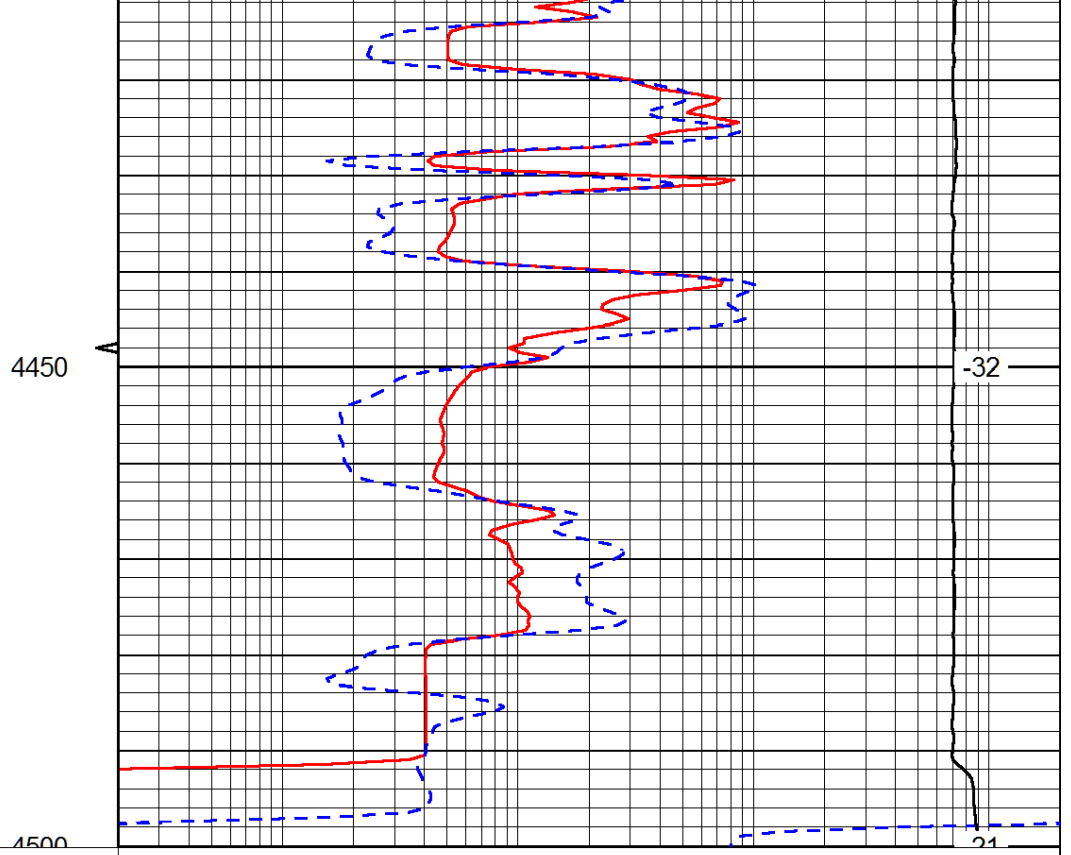








0	Gamma Ray (GAPI)	150
6	SCAL (in)	16
-200	sp (mV)	0



0.2	LGRD (Ohm-m)	2000
560	SWNC (NAPI)	2160
15000	Line Tension (lb)	0

LSPD
(ft/min)