



Pioneer Energy Services

Dual Compensated Porosity Log

API No. 15-101-22,472-00-00
Company Blue Goose Drilling Company, Inc.
Well Borell 'E' #1
Field Wildcat
County Lane
Location SW SE SE NE
 2595' FNL & 641' FEL
State Kansas
Other Services DIL/MEI

Permanent Datum Ground Level Elevation 2587
Log Measured From Kelly Bushing 7 Ft. Above Perm. Datum
Drilling Measured From Kelly Bushing
Date 11/21/2013
Run Number One
Type Log CNL / CDL
Depth Driller 4582
Depth Logger 4582
Bottom Logged Interval 4561
Top Logged Interval 3600
Type Fluid In Hole Chemical
Salinity, PPM CL 4500
Density 9.3
Level Full
Max. Rec. Temp. F 122
Operating Rig Time 4 Hours
Equipment -- Location 15 Hays
Recorded By D Kerr
Witnessed By Vern Schrag

Borehole Record		Casing Record				
Run No.	Bit From	To	Size	Wgt.	From	To
One	12.25	00	285	8.625	23#	00
Two	7.875	285				285

<<< Fold Here >>>

All interpretations are opinions based on inferences from electrical or other measurements and we cannot and do not guarantee the accuracy or correctness of any interpretation, and we shall not, except in the case of gross or willful negligence on our part, be liable or responsible for any loss, costs, damages, or expenses incurred or sustained by anyone resulting from any interpretation made by any of our officers, agents or employees. These interpretations are also subject to our general terms and conditions set out in our current Price Schedule.

Comments

Thank you for using Log-Tech, Inc.
 (785) 625-3858

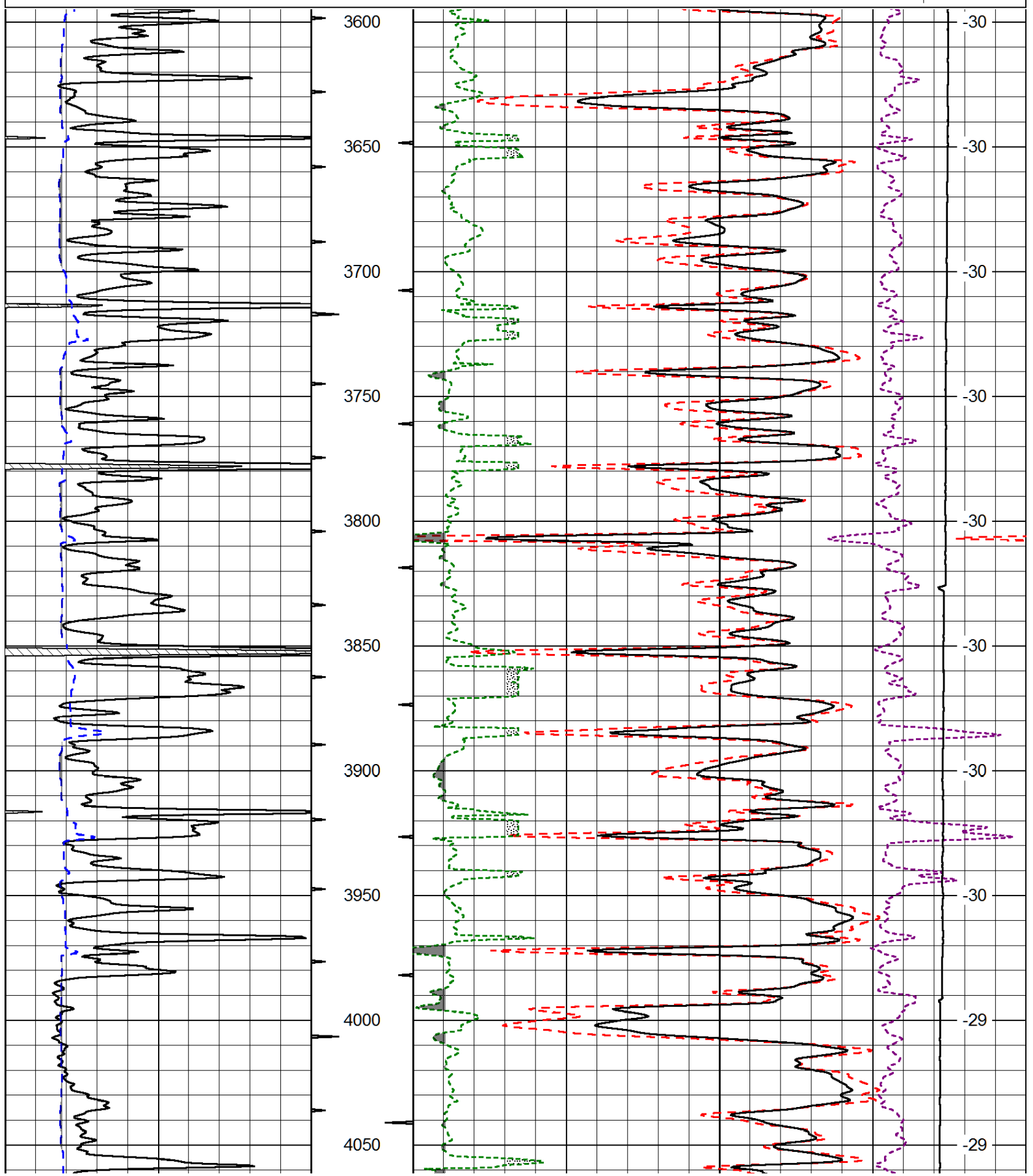
 Ness City KS, West to County Line,
 West to Turkey Red RD, 2 1/2 North, West Into

Database File: bluegoose_borell_e_1hd.db
 Dataset Pathname: DIL/bgstk
 Presentation Format: cdl
 Dataset Creation: Thu Nov 21 10:29:24 2013
 Charted by: Depth in Feet scaled 1:600

0	Gamma Ray (GAPI)	150
6	Caliper (in)	16

30	Compensated Density (pu)		-10
2	Bulk Density (g/cc)		3
15000	Line Tension (lb)		0
2.625	DGA (g/cc)	3.425	-0.25
		Correction (g/cc)	0.25

LSPD
(ft/min)



15000	Line Tension (lb)			0	
2.625	DGA (g/cc)	3.425	-0.25	Correction (g/cc)	0.25
				LSPD (ft/min)	

Database File: bluegoose_borell_e_1hd.db
 Dataset Pathname: DIL/bgstk
 Presentation Format: cndlspec
 Dataset Creation: Thu Nov 21 10:29:24 2013
 Charted by: Depth in Feet scaled 1:240

0	Gamma Ray (GAPI)	150	30	CNLS (pu)	-10		
6	Caliper (in)	16	30	Compensated Density (2.71 ma) (pu)	-10		
		2.625	DGA (g/cc)	3.425	-0.25	Correction (g/cc)	0.25
		10000	Line Tension (lb)		0		
					LSPD (ft/min)		

