



Pioneer Energy Services

Dual Induction Log

15-101-22,472-00-00

API No.

Company **Blue Goose Drilling Company, Inc.**

Well **Borell 'E' #1**

Field **Wildcat**

County **Lane** State **Kansas**

Location **SW SE SE NE
2595' FNL & 641' FEL**

Sec: 4 Twp: 18S Rge: 27W

Other Services
CNL/CDL
MEL

Permanent Datum Ground Level Elevation 2587
Log Measured From Kelly Bushing 7 Ft. Above Perm. Datum
Drilling Measured From Kelly Bushing

Date 11/21/2013

Run Number One

Depth Driller 4582

Depth Logger 4582

Bottom Logged Interval 4581

Top Log Interval 250

Casing Driller 8.625 @ 285

Casing Logger 282

Bit Size 7.875

Type Fluid in Hole Chemical

Salinity, ppm CL 4500

Density / Viscosity 9.3 61

pH / Fluid Loss 9.5 8.8

Source of Sample Flowline

Rm @ Meas. Temp 0.65 @ 56

Rmf @ Meas. Temp 0.49 @ 56

Rmc @ Meas. Temp 0.88 @ 56

Source of Rmf / Rmc Charts

Rm @ BHT 0.30 @ 122

Operating Rig Time 4 Hours

Max Rec. Temp. F 122

Equipment Number 15

Location Hays

Recorded By D.Kerr

Witnessed By Vern Schrag

<<< Fold Here >>>

All interpretations are opinions based on inferences from electrical or other measurements and we cannot and do not guarantee the accuracy or correctness of any interpretation, and we shall not, except in the case of gross or willful negligence on our part, be liable or responsible for any loss, costs, damages, or expenses incurred or sustained by anyone resulting from any interpretation made by any of our officers, agents or employees. These interpretations are also subject to our general terms and conditions set out in our current Price Schedule.

Comments

Thank you for using Log-Tech, Inc.
(785) 625-3858

Ness City KS, West to County Line,
West to Turkey Red RD, 2 1/2 North, West Into

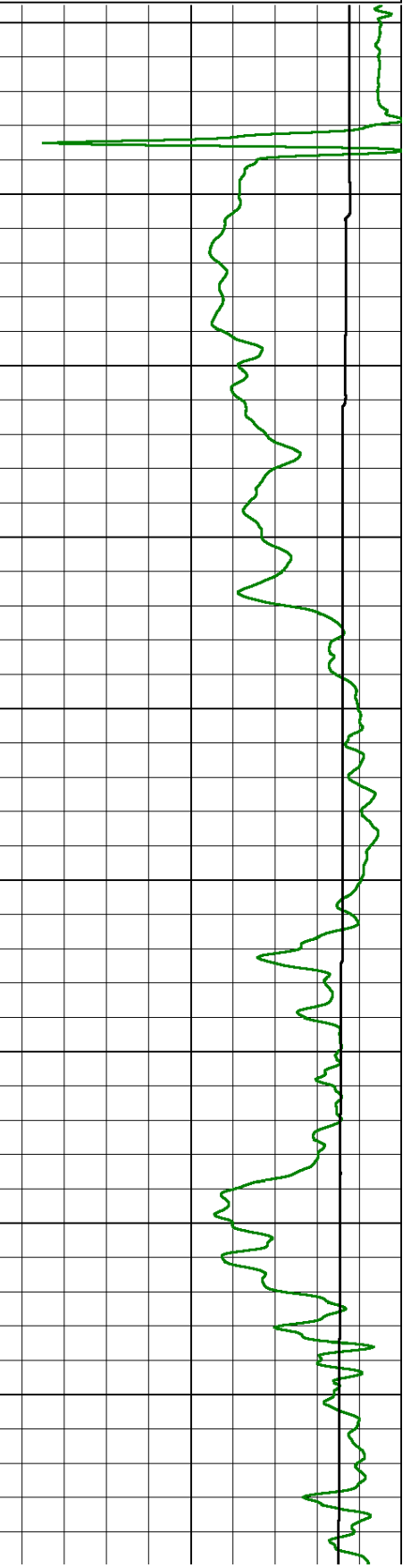
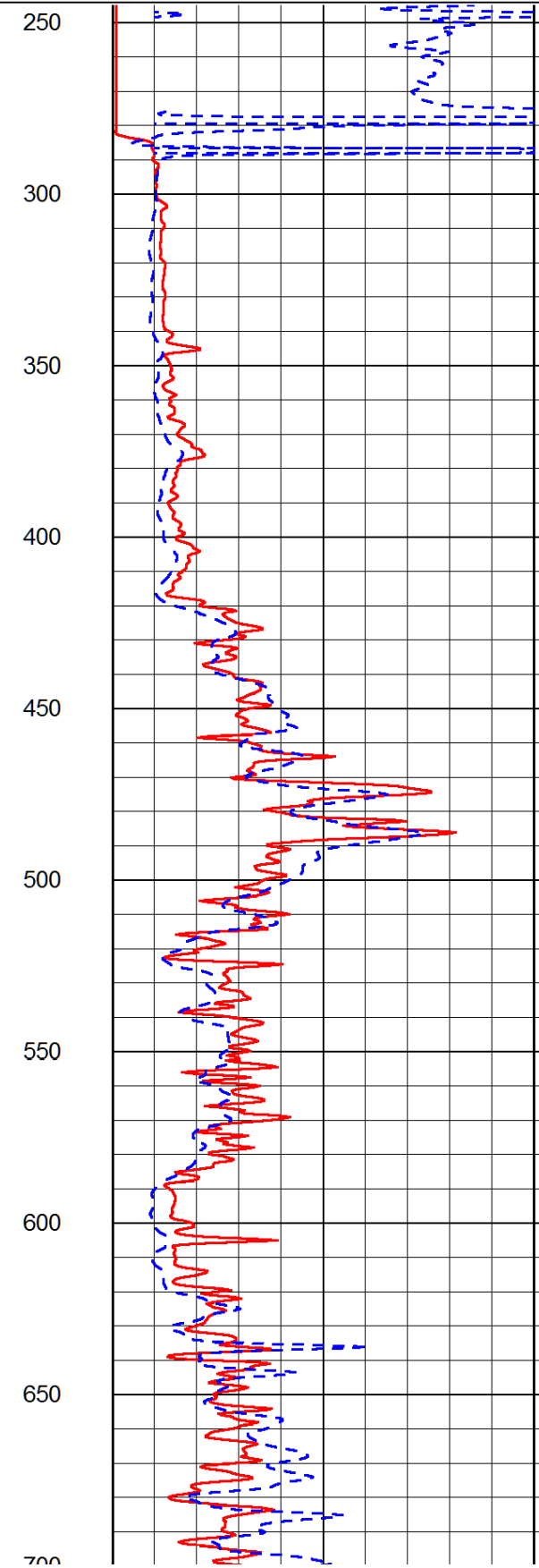
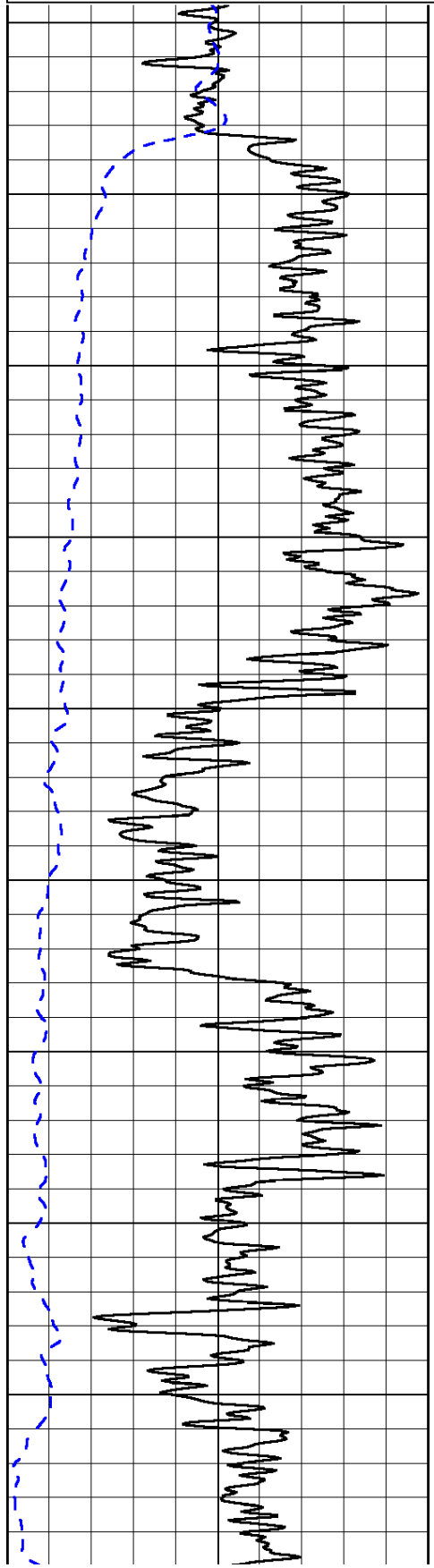
Database File: bluegoose_borell_e_1hd.db
Dataset Pathname: DIL/bgstk
Presentation Format: dil2in
Dataset Creation: Thu Nov 21 10:29:24 2013
Charted by: Depth in Feet scaled 1:600

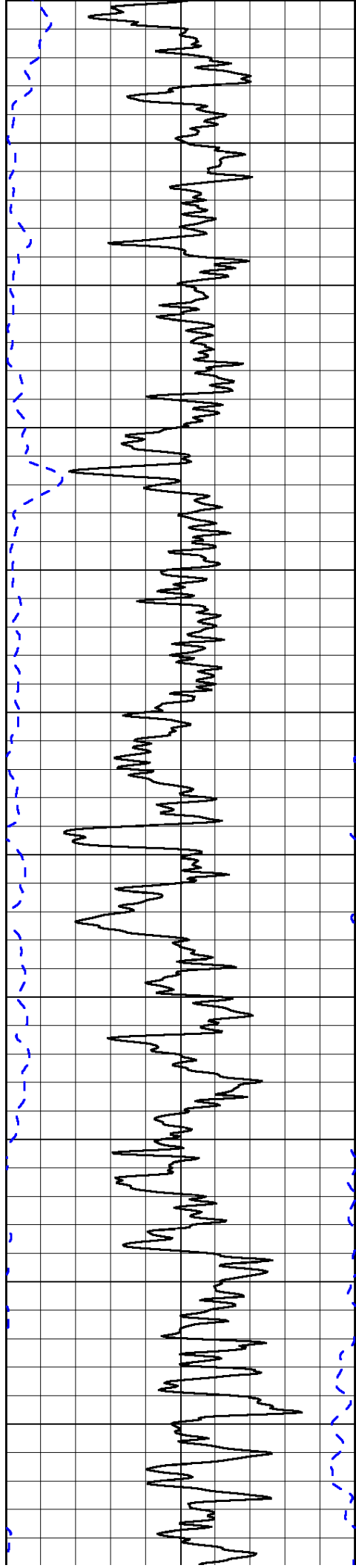
0	Gamma Ray (GAPI)	150
-200	SP (mV)	0

0	Shallow Resistivity (Ohm-m)	50
0	Deep Resistivity (Ohm-m)	50

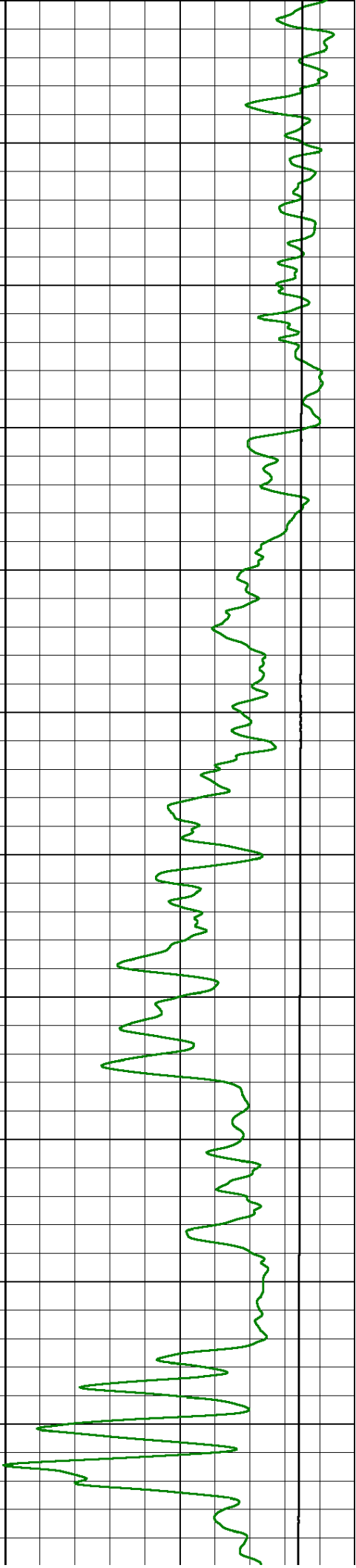
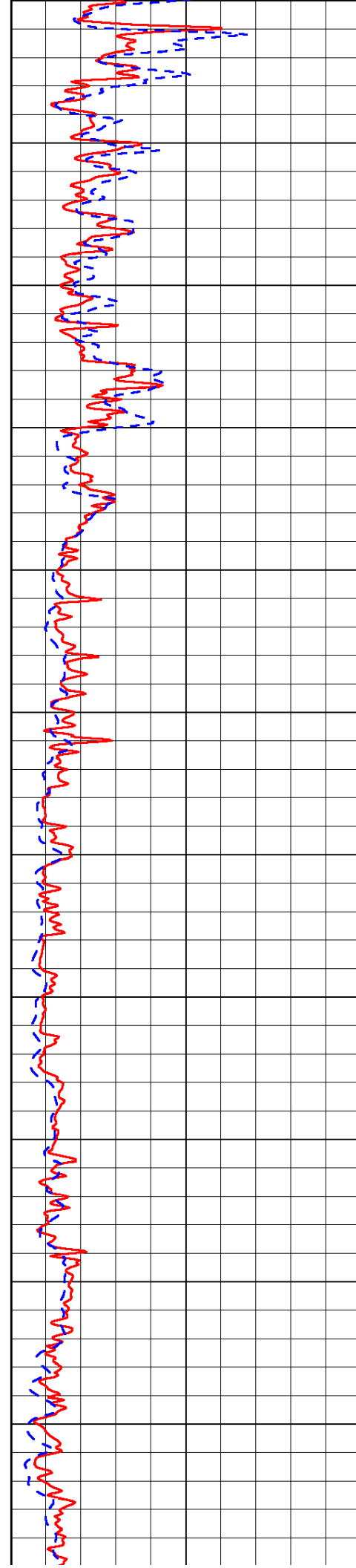
1000	Conductivity (Ohm-m)	0
15000	Line Tension (lb)	0

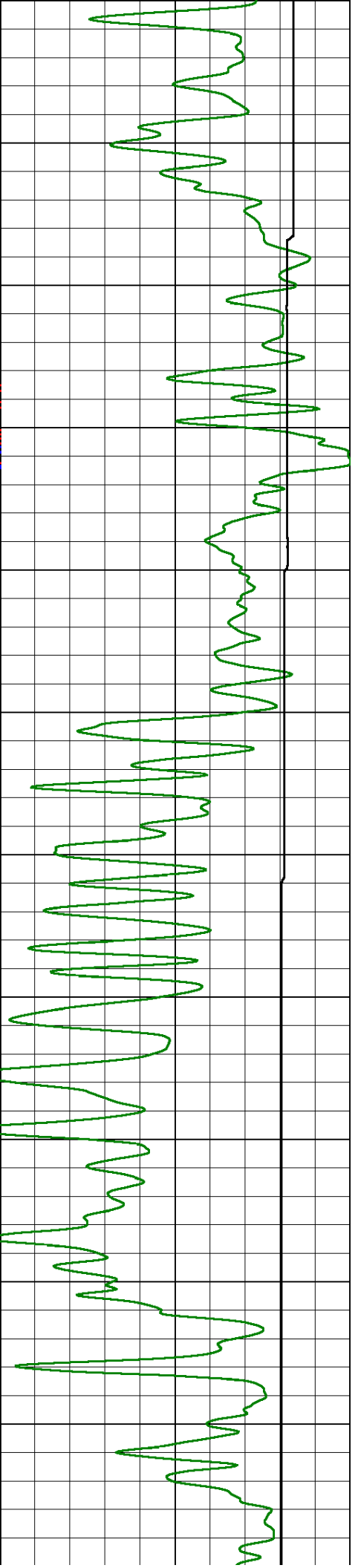
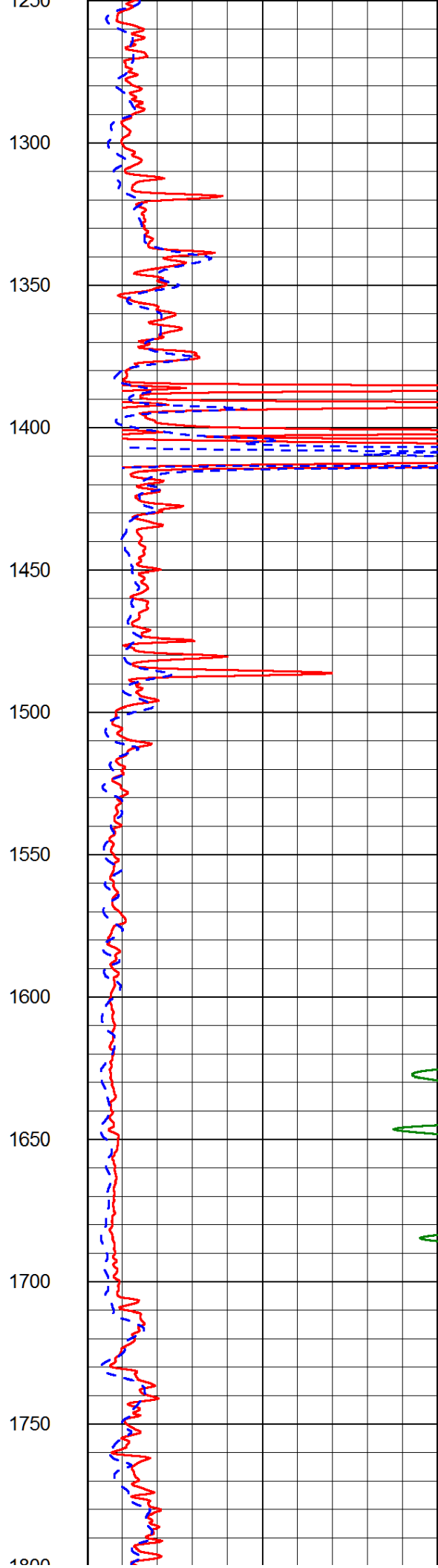
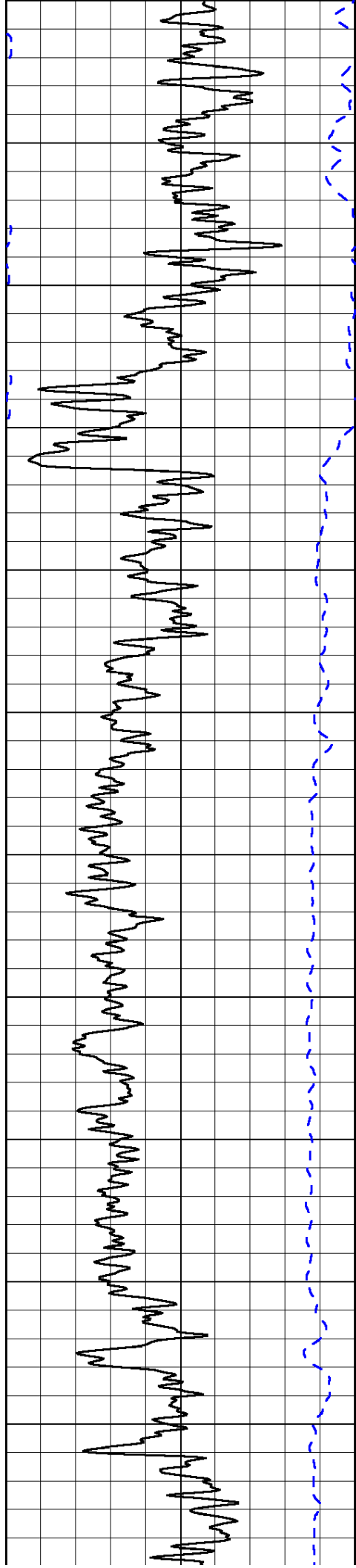
Shallow Resistivity		
50	(Ohm-m)	500
50	Deep Resistivity (Ohm-m)	500

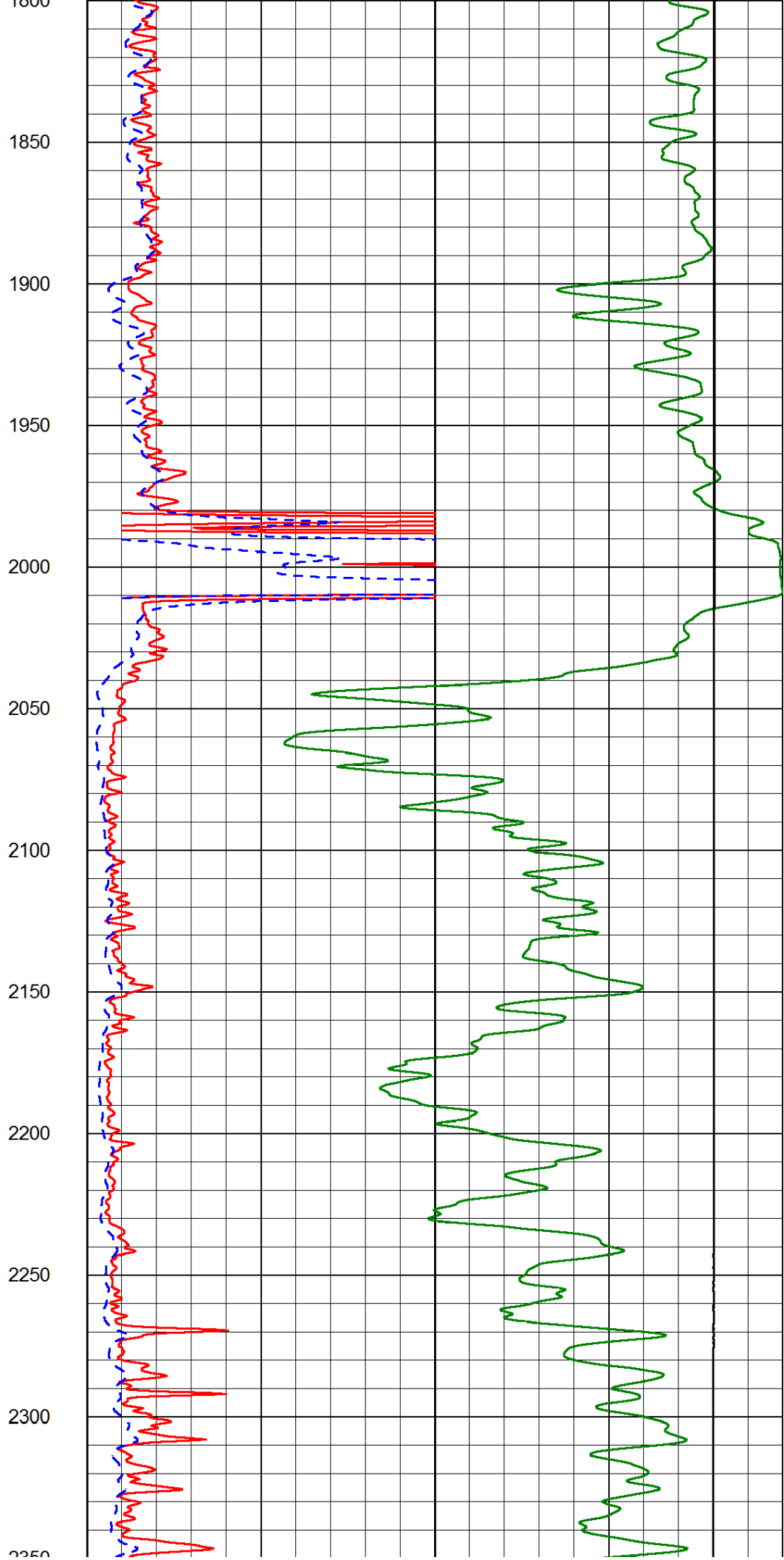
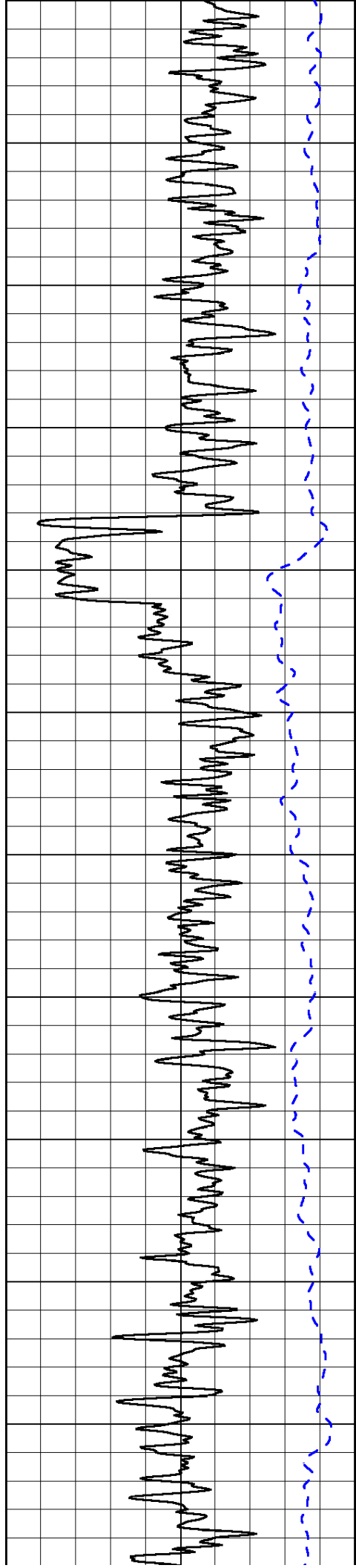


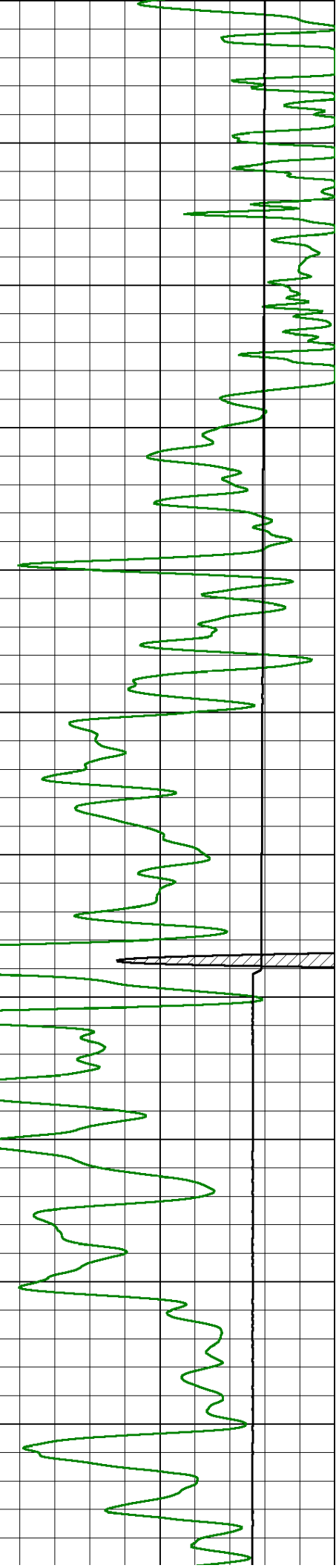
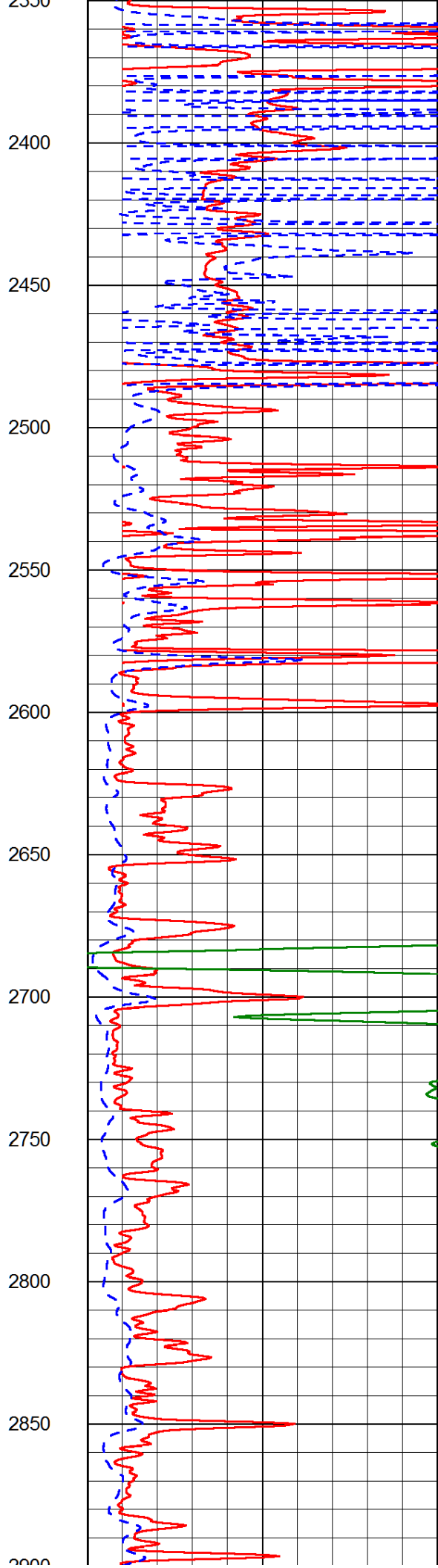
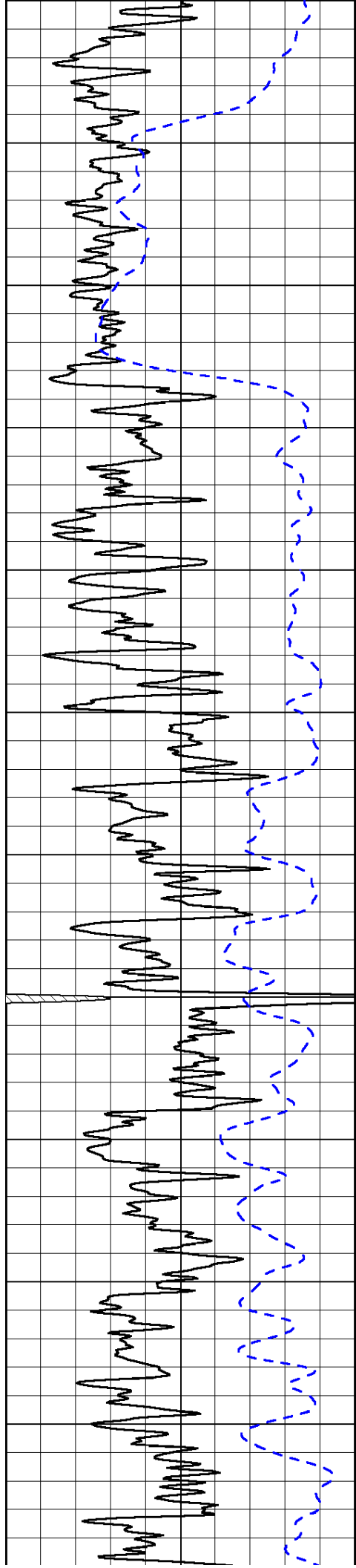


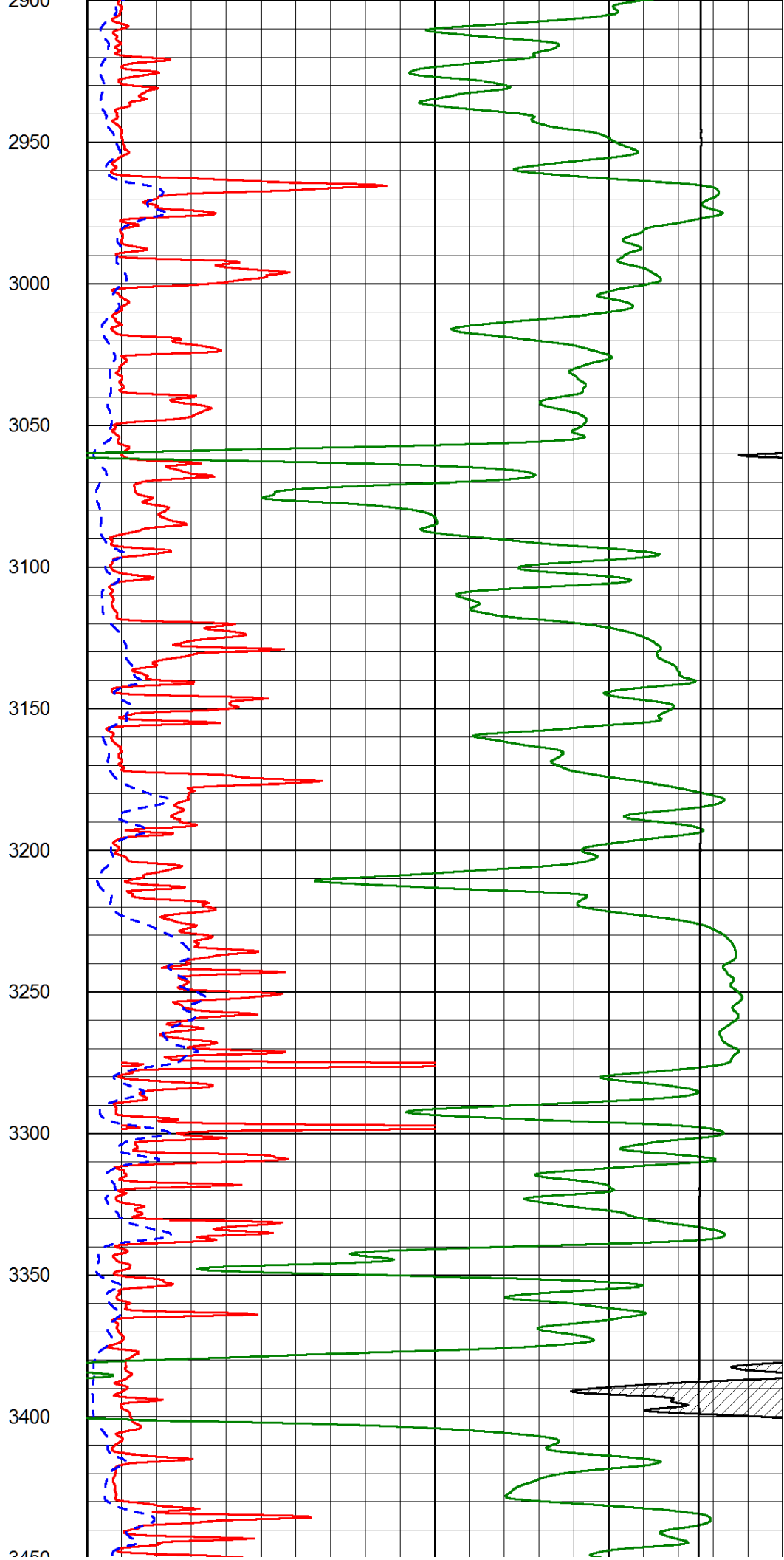
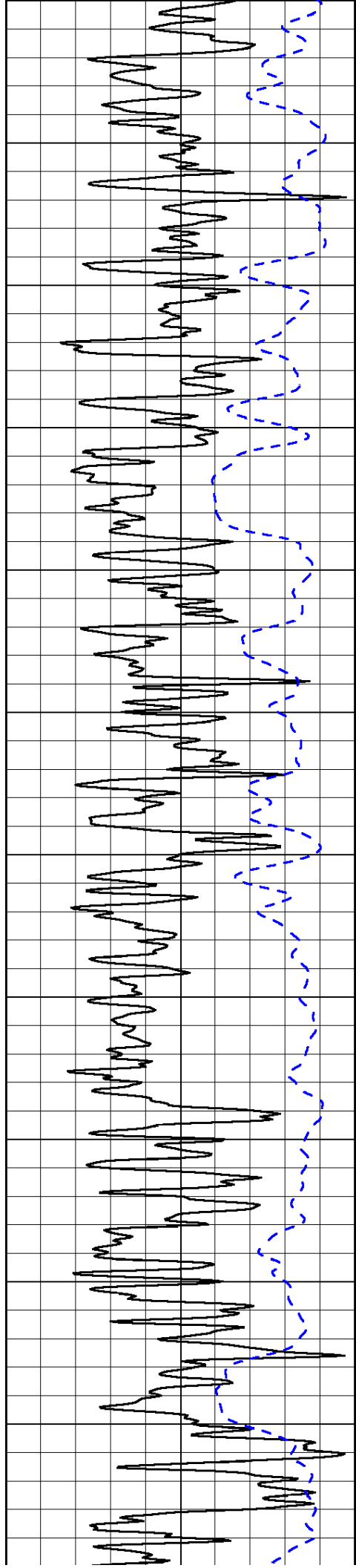
700
750
800
850
900
950
1000
1050
1100
1150
1200
1250

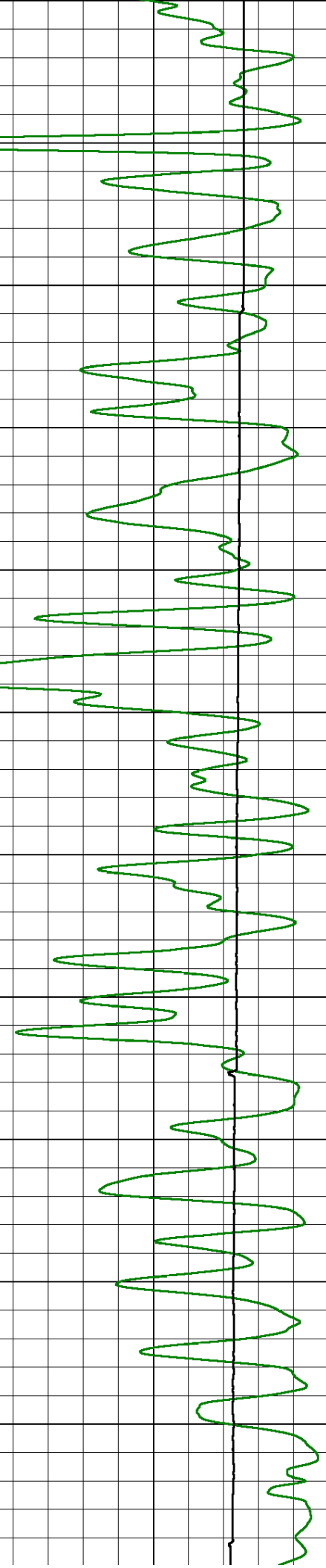
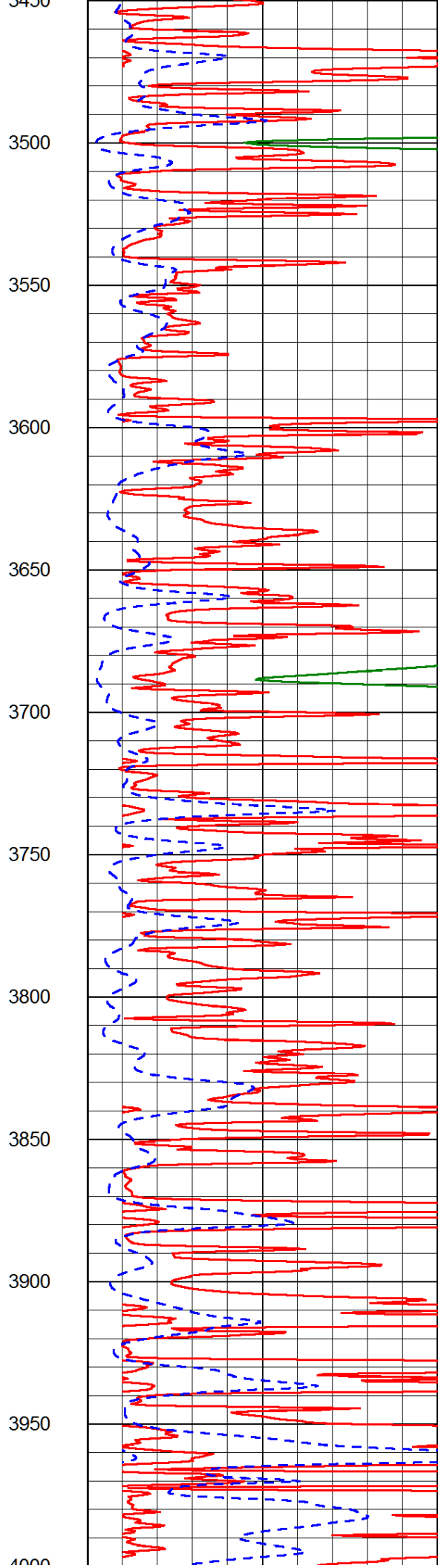
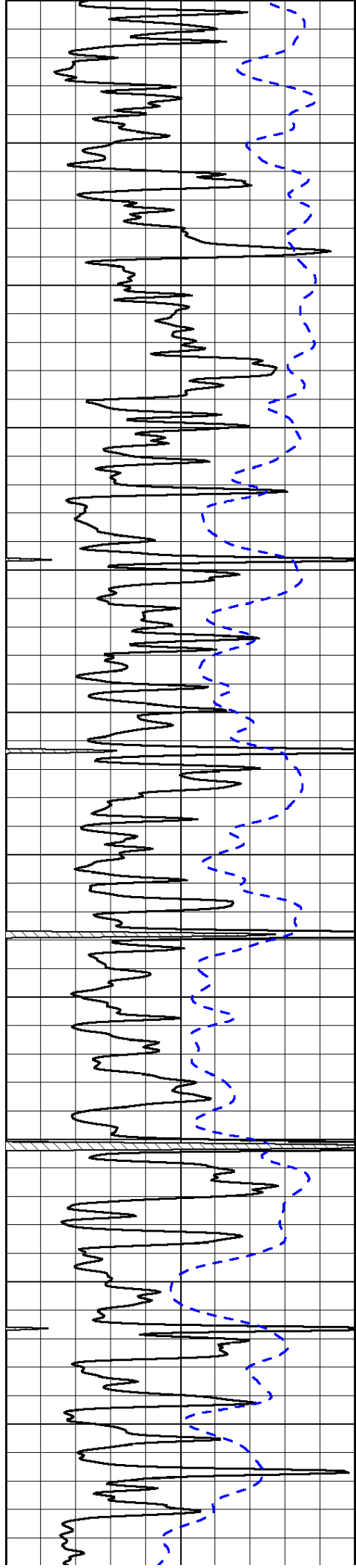


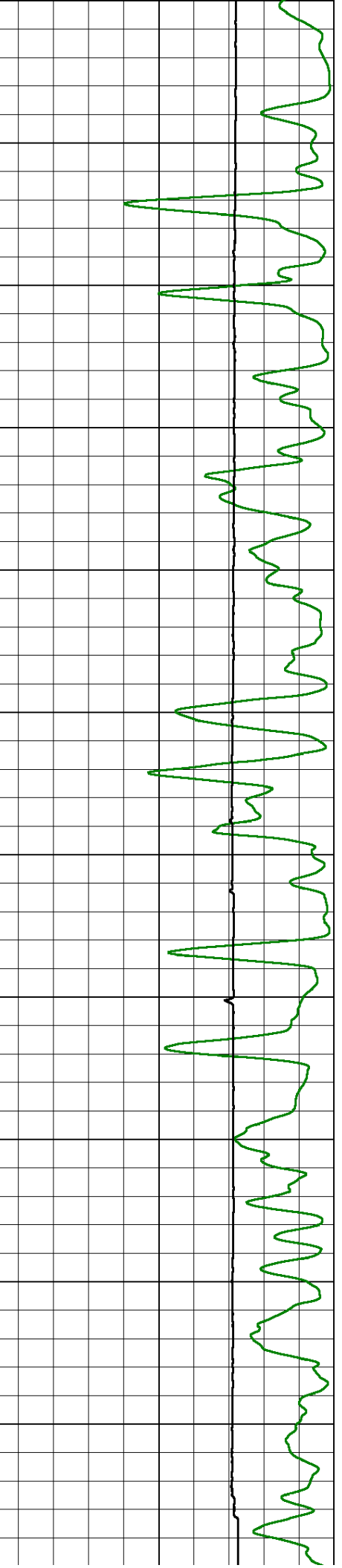
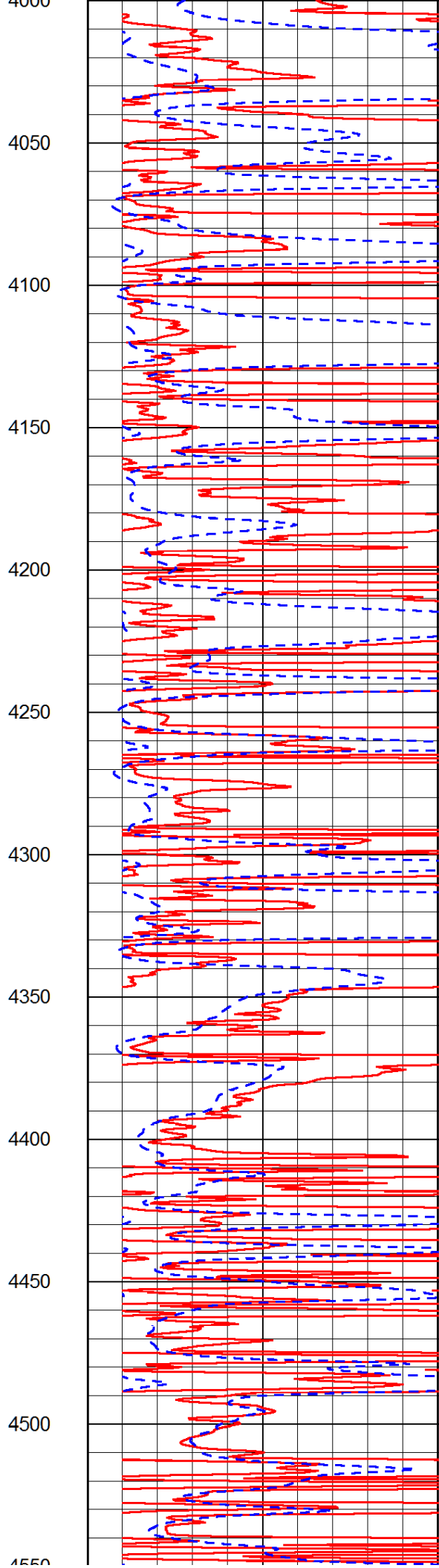
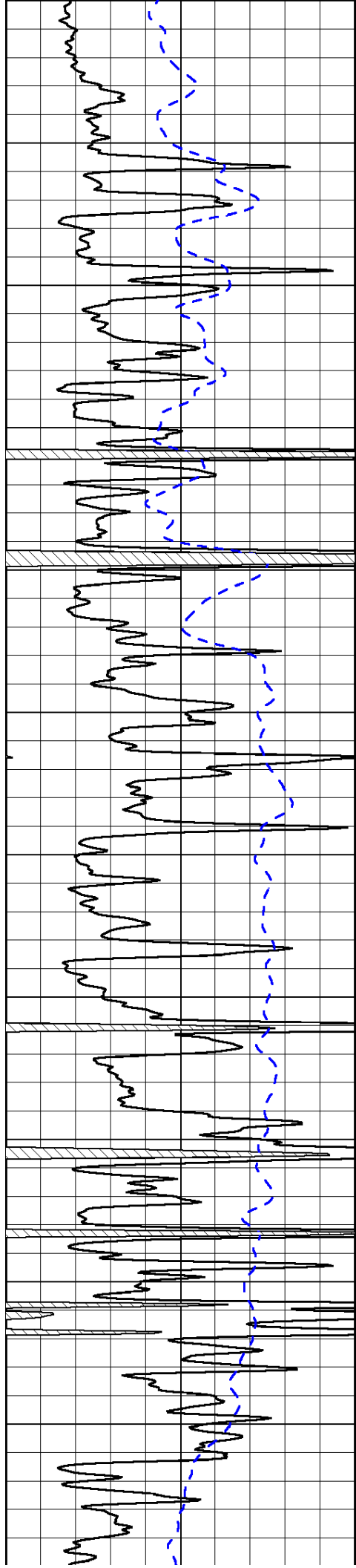


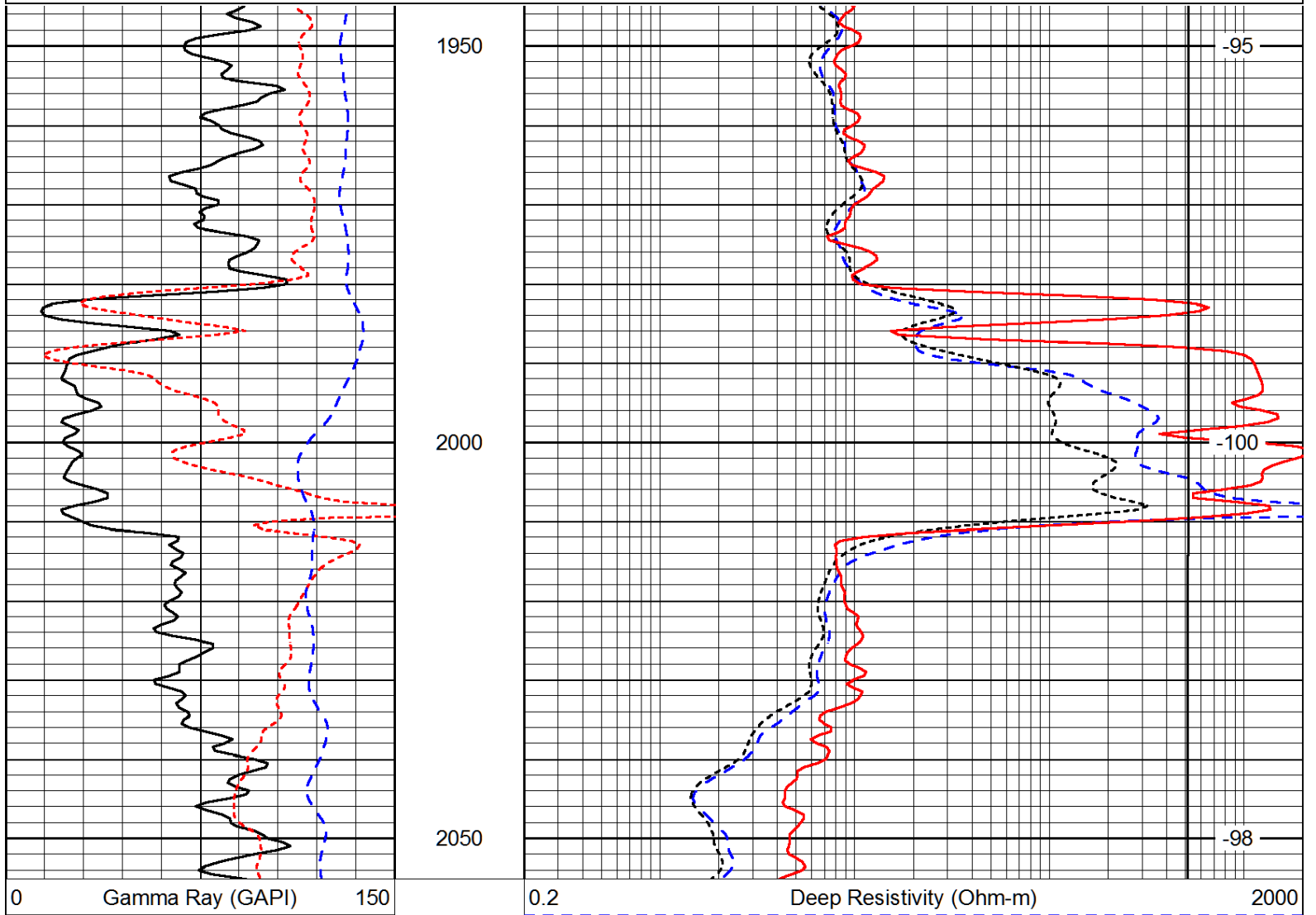
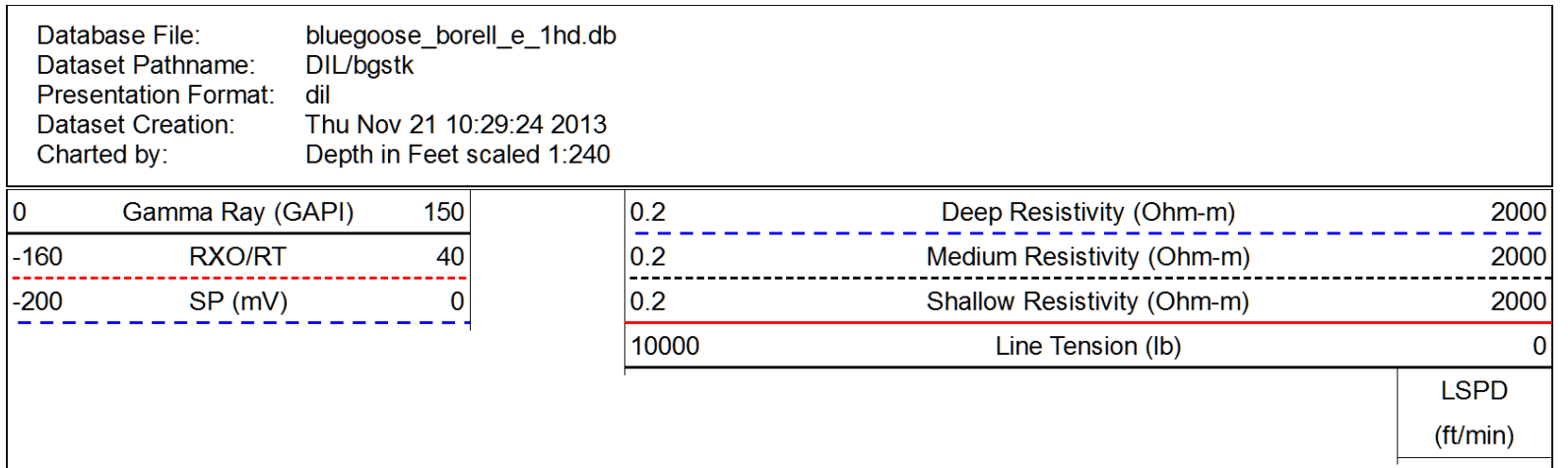
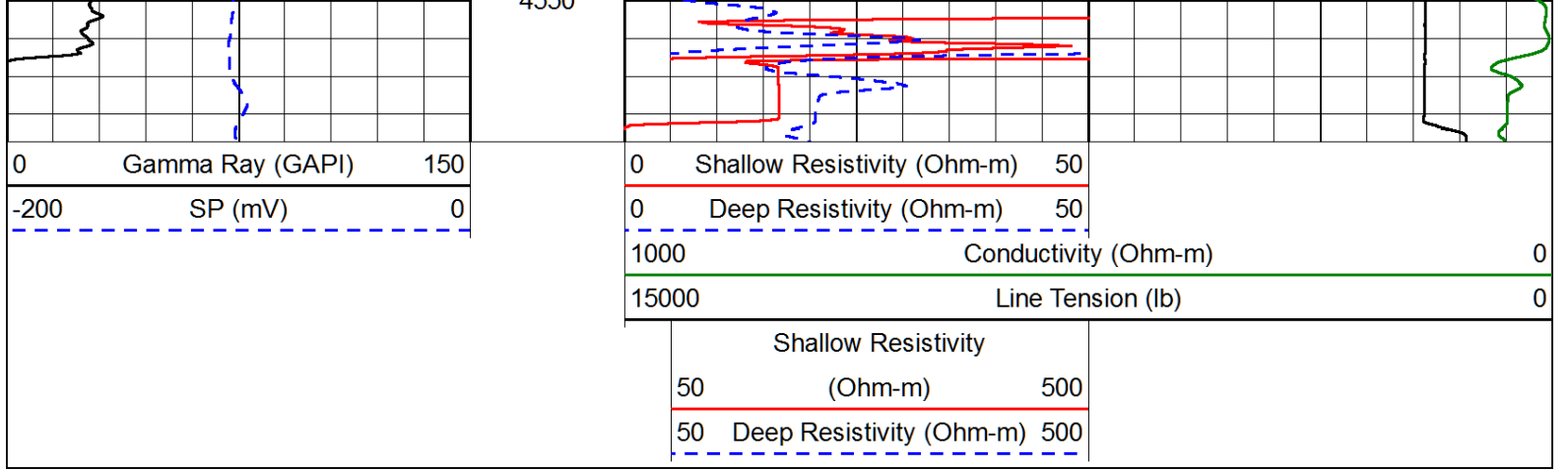












-160	RXO/RT	40
-200	SP (mV)	0

0.2	Medium Resistivity (Ohm-m)	2000
0.2	Shallow Resistivity (Ohm-m)	2000
10000	Line Tension (lb)	0

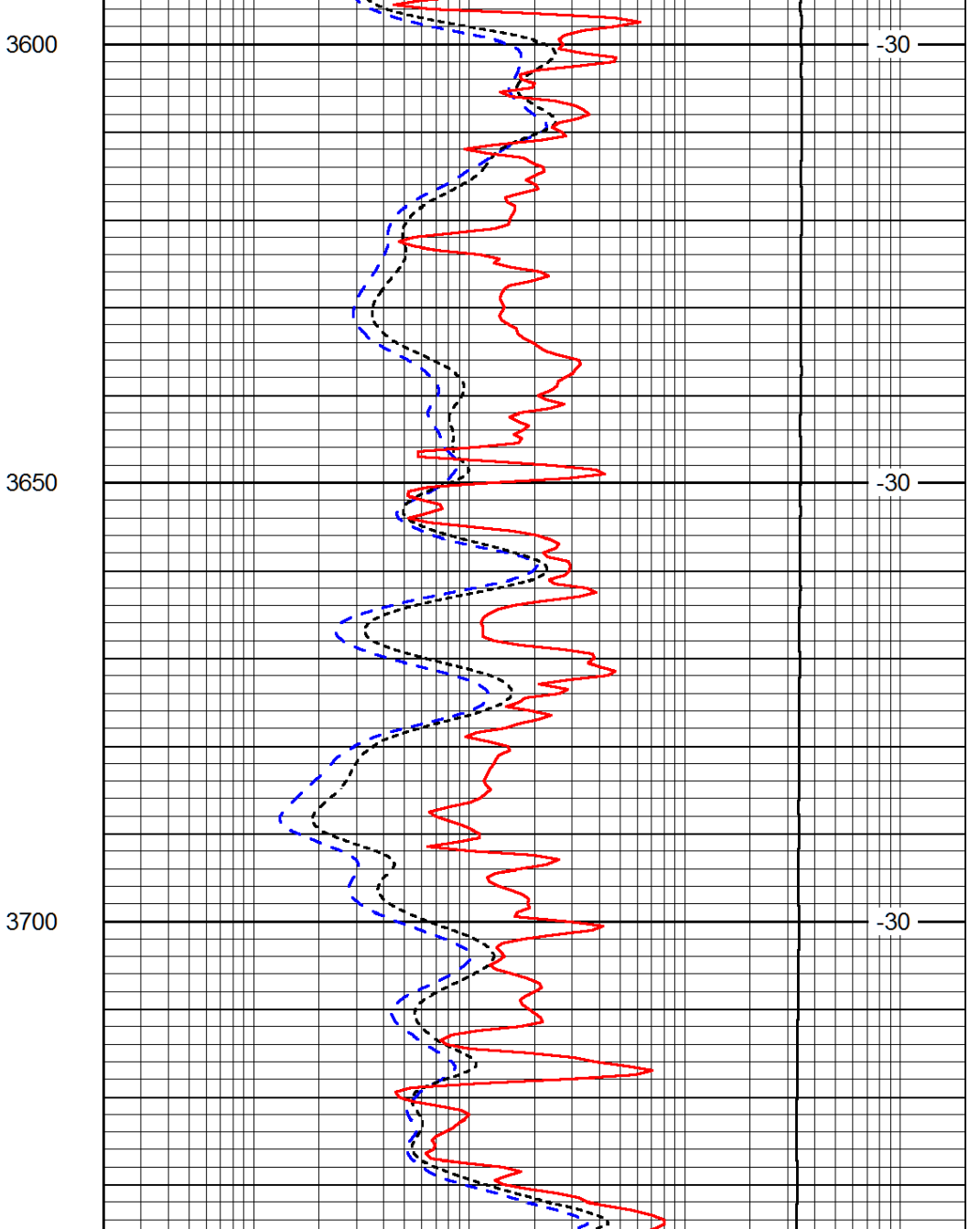
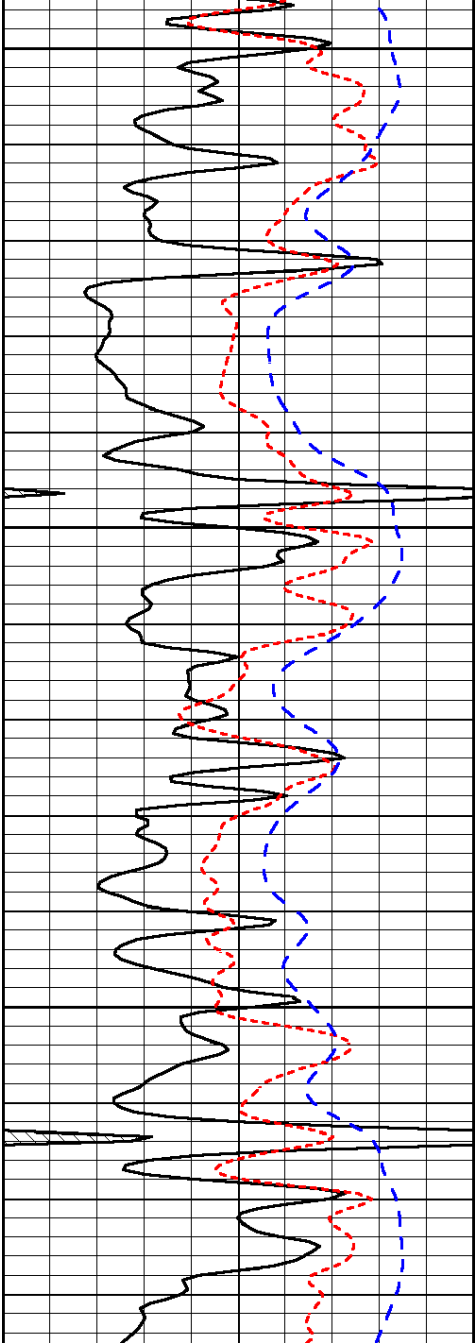
LSPD
(ft/min)

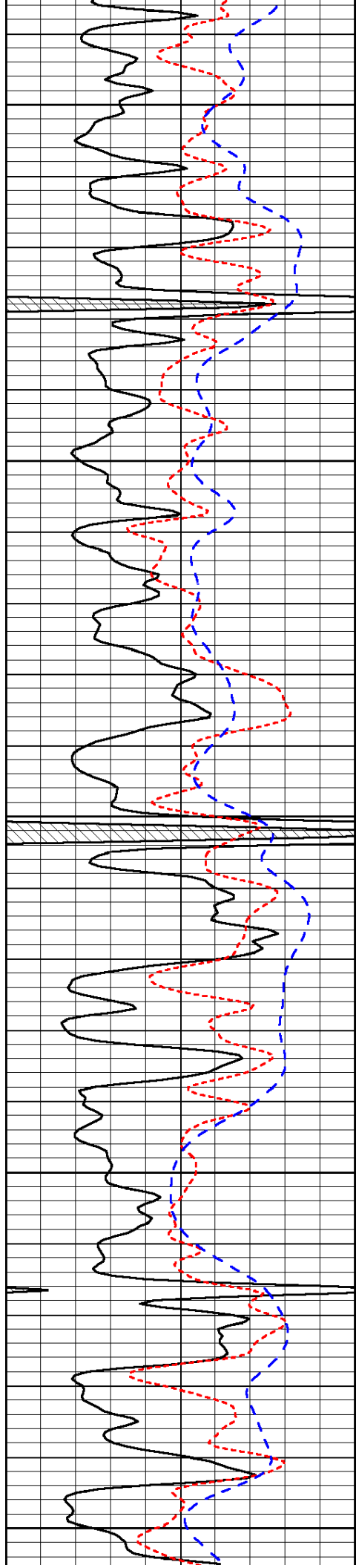
Database File: bluegoose_borell_e_1hd.db
 Dataset Pathname: DIL/bgstk
 Presentation Format: dil
 Dataset Creation: Thu Nov 21 10:29:24 2013
 Charted by: Depth in Feet scaled 1:240

0	Gamma Ray (GAPI)	150
-160	RXO/RT	40
-200	SP (mV)	0

0.2	Deep Resistivity (Ohm-m)	2000
0.2	Medium Resistivity (Ohm-m)	2000
0.2	Shallow Resistivity (Ohm-m)	2000
10000	Line Tension (lb)	0

LSPD
(ft/min)





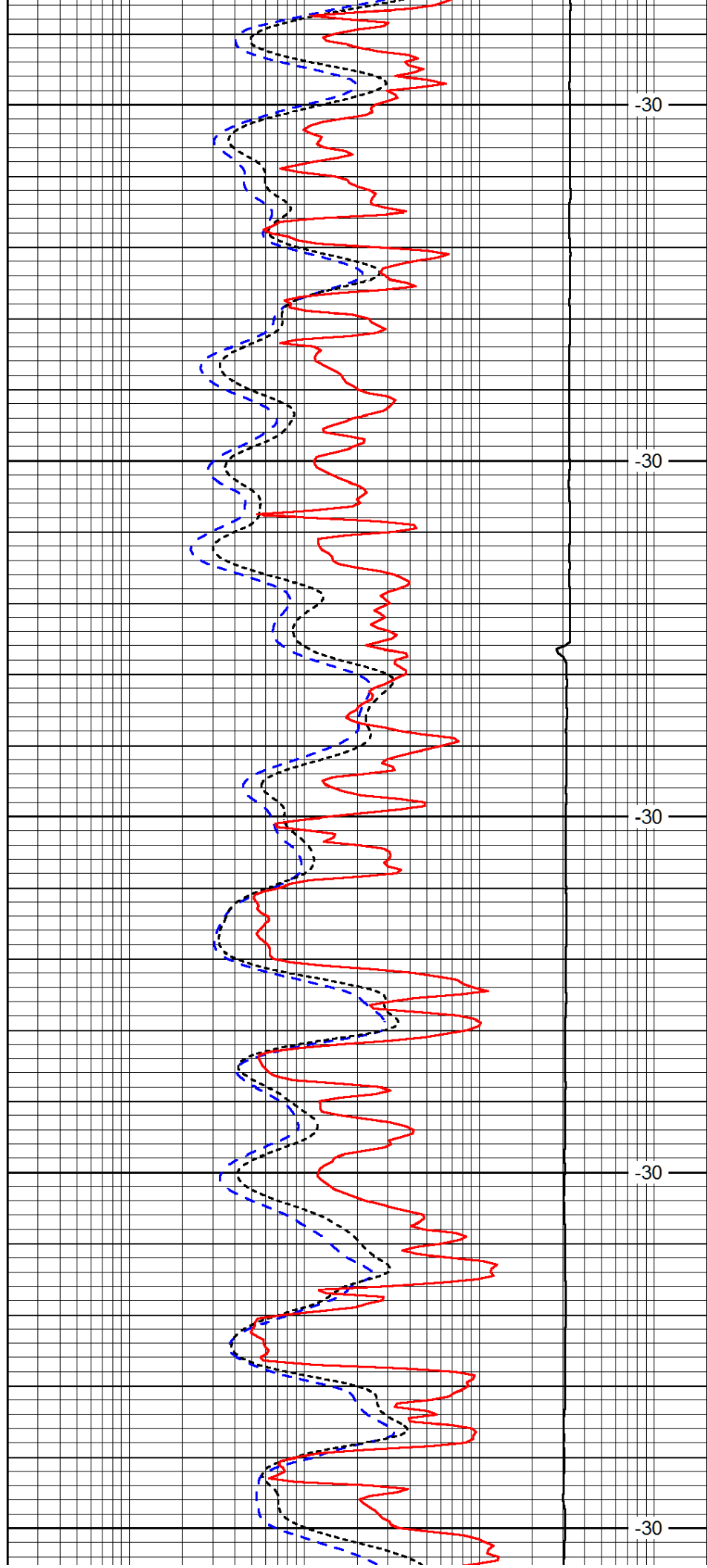
3750

3800

3850

3900

3950



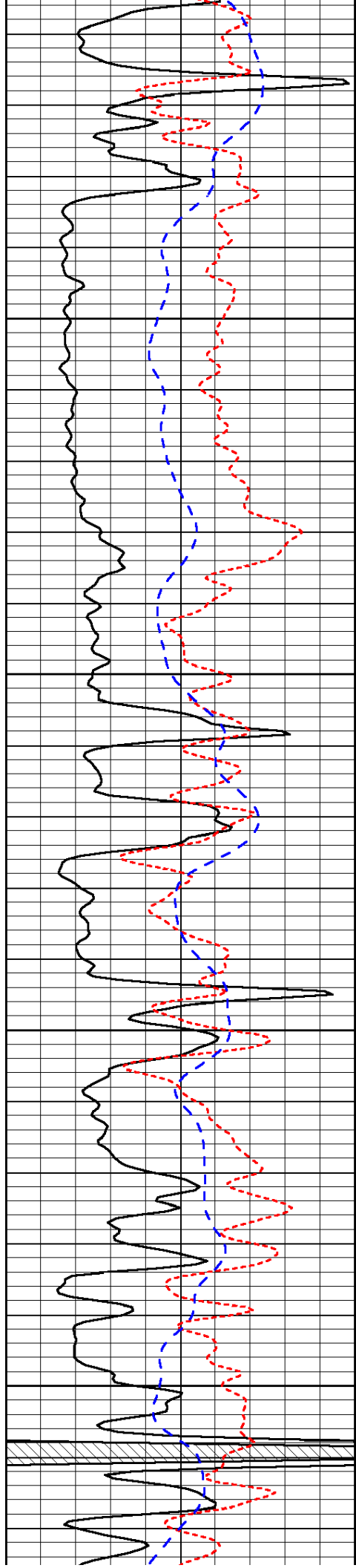
-30

-30

-30

-30

-30

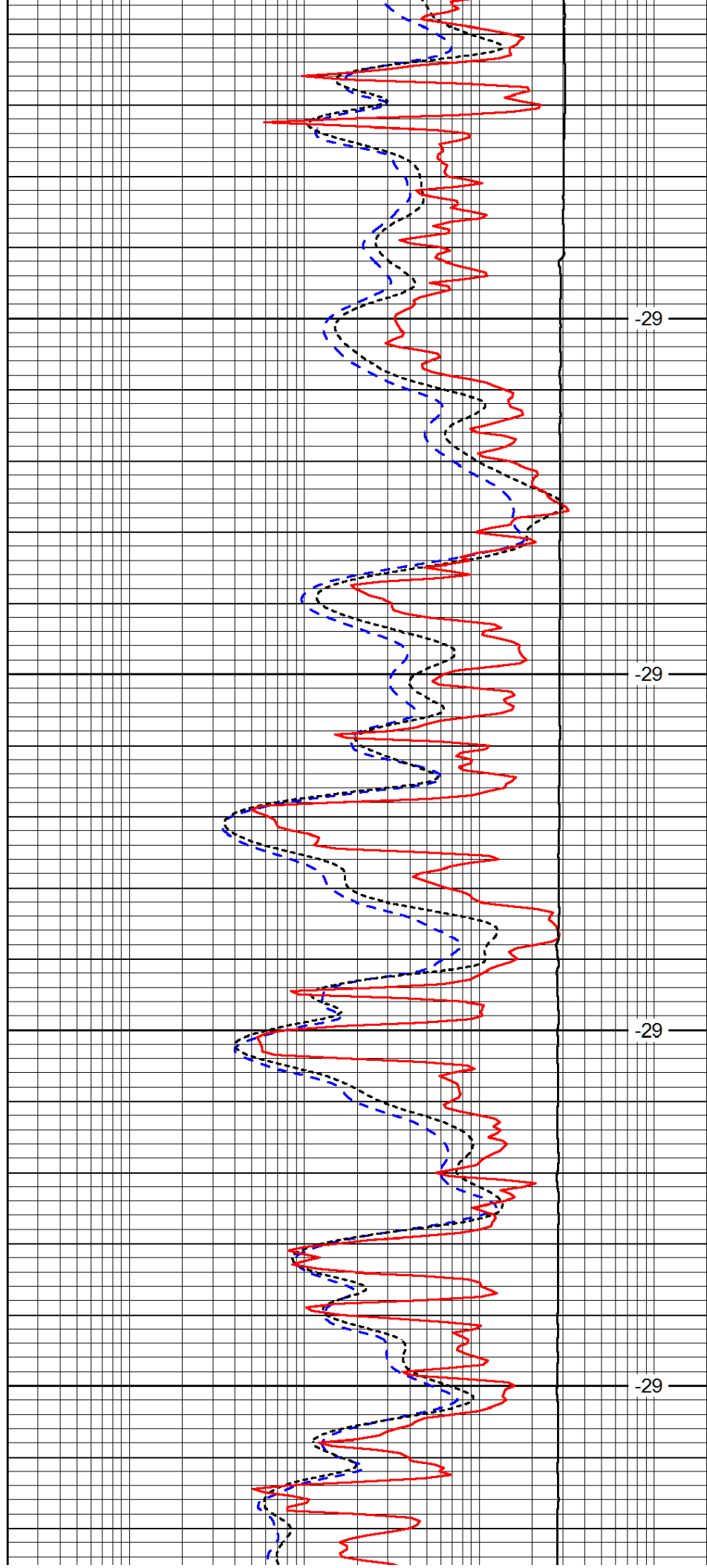


4000

4050

4100

4150

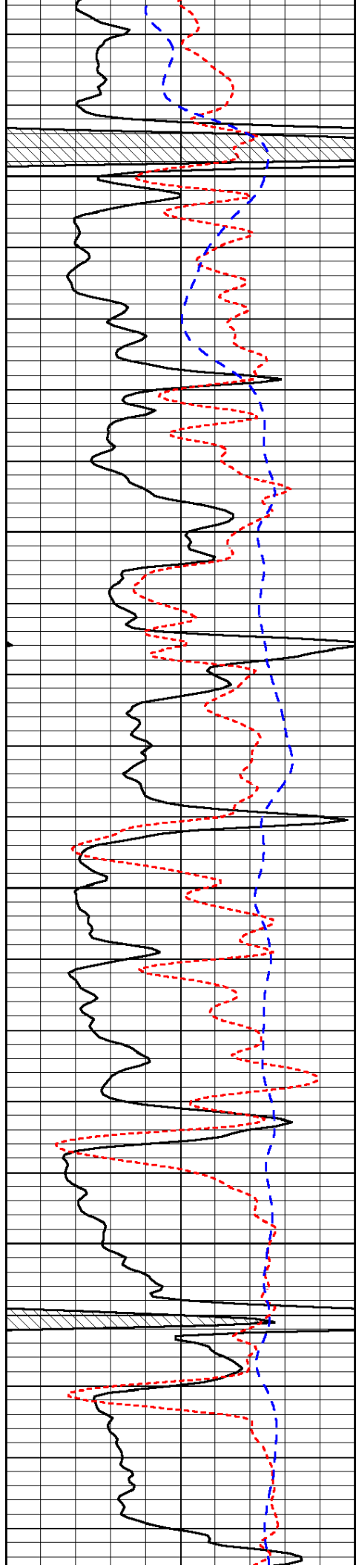


-29

-29

-29

-29

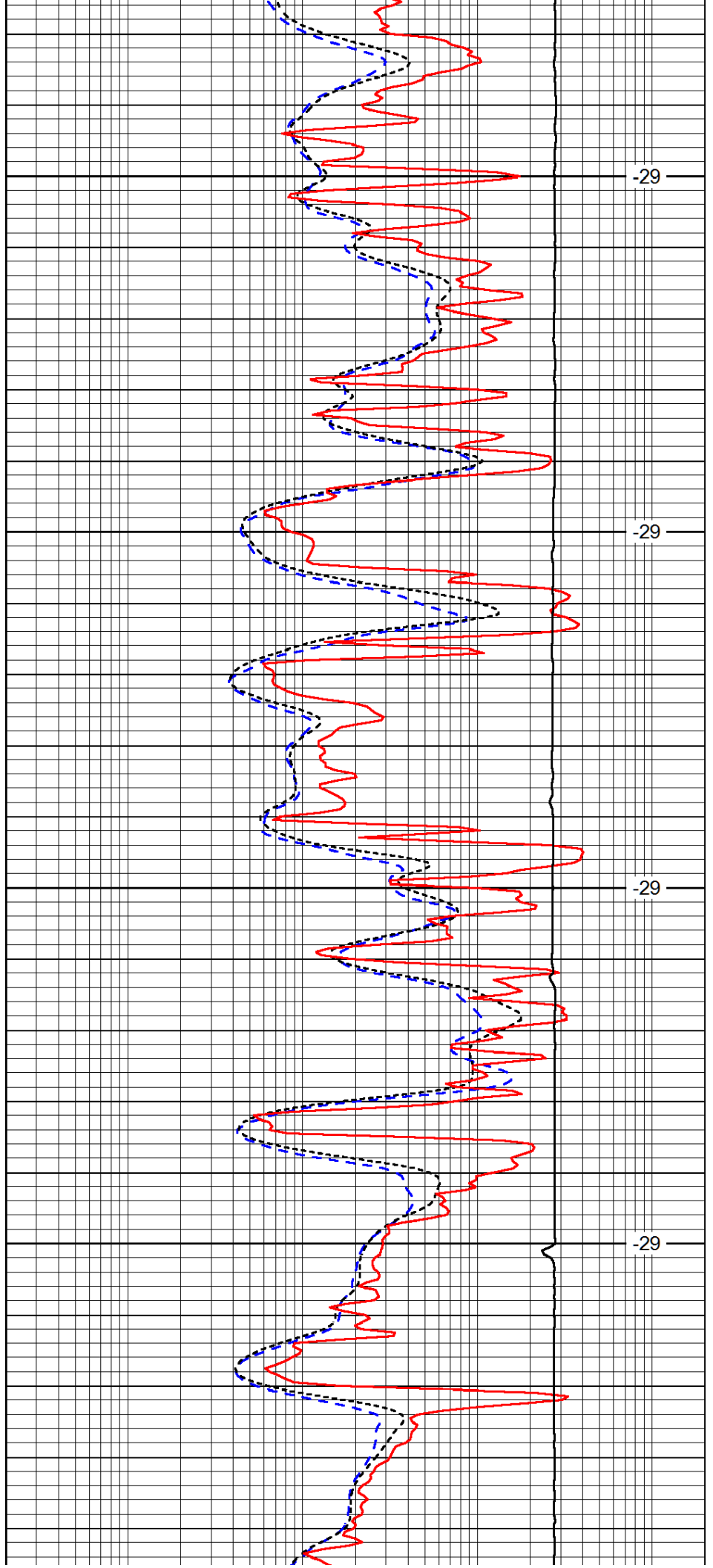


4200

4250

4300

4350

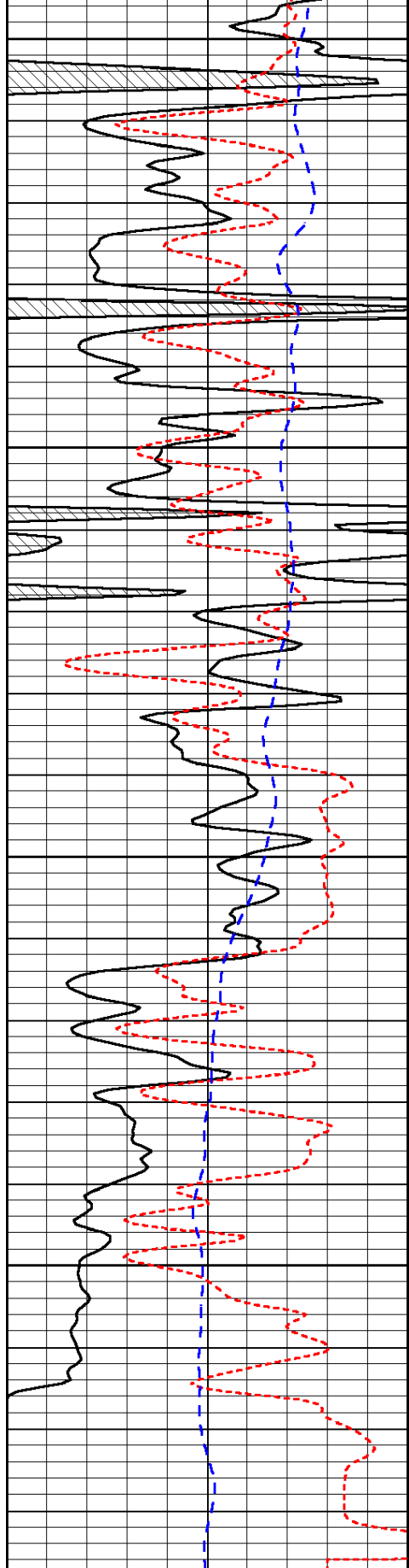


-29

-29

-29

-29



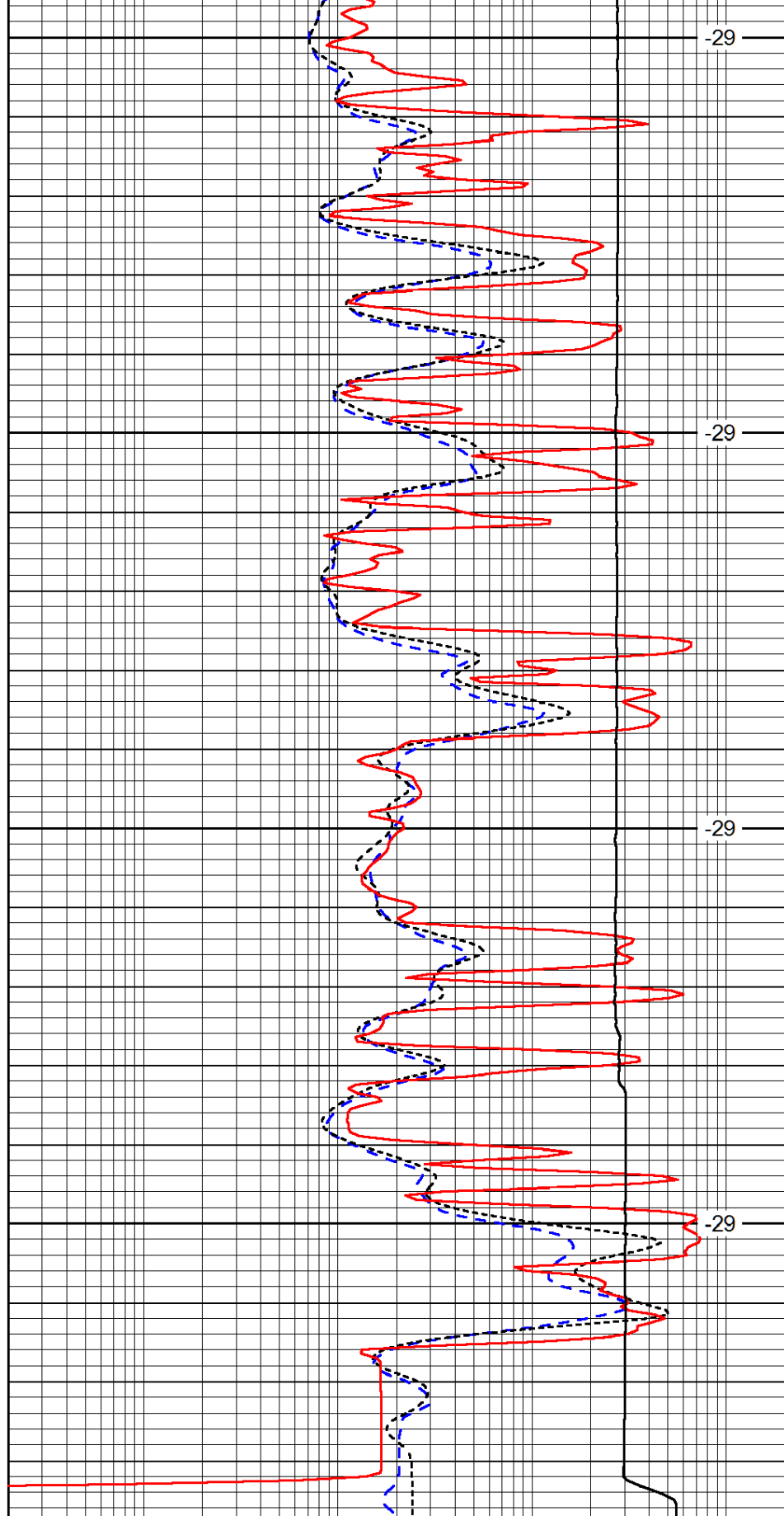
4400

4450

4500

4550

0	Gamma Ray (GAPI)	150
-160	RXO/RT	40
-200	SP (mV)	0



-29

-29

-29

-29

0.2	Deep Resistivity (Ohm-m)	2000
0.2	Medium Resistivity (Ohm-m)	2000
0.2	Shallow Resistivity (Ohm-m)	2000
10000	Line Tension (lb)	0

LSPD
(ft/min)

