



Pioneer Energy Services

Microresistivity Log

15-101-22,472-00-00

API No.

Company **Blue Goose Drilling Company, Inc.**

Well **Borell 'E' #1**

Field **Wildcat**

County **Lane** State **Kansas**

Location **SW SE SE NE
2595' FNL & 641' FEL**

Sec: **4** Twp: **18S** Rge: **27W**

Permanent Datum **Ground Level** Elevation **2587**

Log Measured From **Kelly Bushing** 7 Ft. Above Perm. Datum

Drilling Measured From **Kelly Bushing**

Other Services
CNL/CDL
DIL
Elevation
K.B. 2594
D.F. 2587
G.L. 2587

Date	11/21/2013	
Run Number	Two	
Depth Driller	4582	
Depth Logger	4582	
Bottom Logged Interval	4581	
Top Log Interval	3600	
Casing Driller	8.625 @ 285	
Casing Logger	282	
Bit Size	7.875	
Type Fluid in Hole	Chemical	
Salinity, ppm CL	4500	
Density / Viscosity	9.3 61	
pH / Fluid Loss	9.5 8.8	
Source of Sample	Flowline	
Rm @ Meas. Temp	0.65 @ 56	
Rmf @ Meas. Temp	0.49 @ 56	
Rmc @ Meas. Temp	0.88 @ 56	
Source of Rmf / Rmc	Charts	
Rm @ BHT	0.30 @ 122	
Operating Rig Time	4 Hours	
Max Rec. Temp. F	122	
Equipment Number	15	
Location	Hays	
Recorded By	D Kerr	
Witnessed By	Vern Schrag	

<<< Fold Here >>>

All interpretations are opinions based on inferences from electrical or other measurements and we cannot and do not guarantee the accuracy or correctness of any interpretation, and we shall not, except in the case of gross or willful negligence on our part, be liable or responsible for any loss, costs, damages, or expenses incurred or sustained by anyone resulting from any interpretation made by any of our officers, agents or employees. These interpretations are also subject to our general terms and conditions set out in our current Price Schedule.

Comments

Thank you for using Log-Tech, Inc.
(785) 625-3858

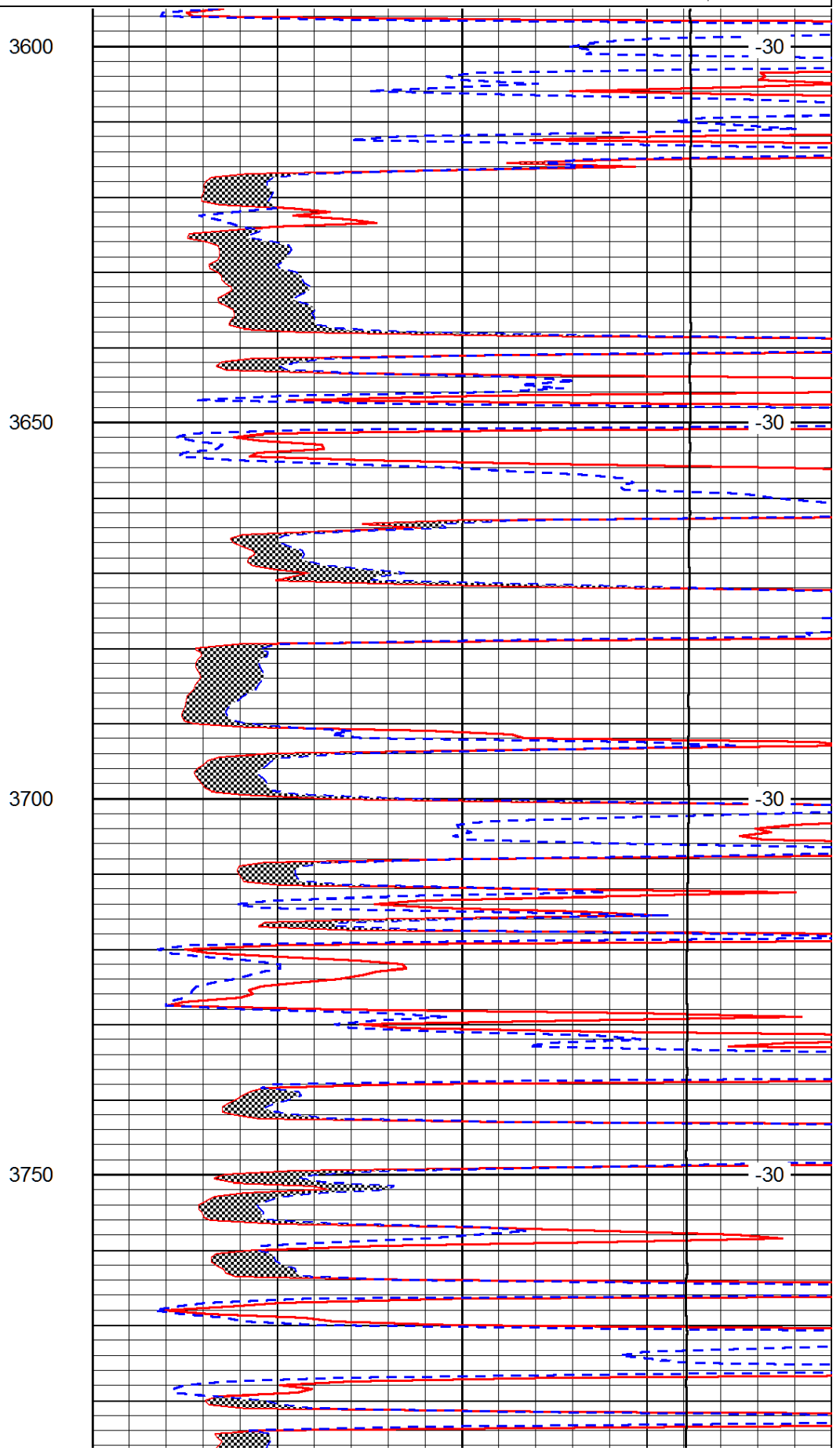
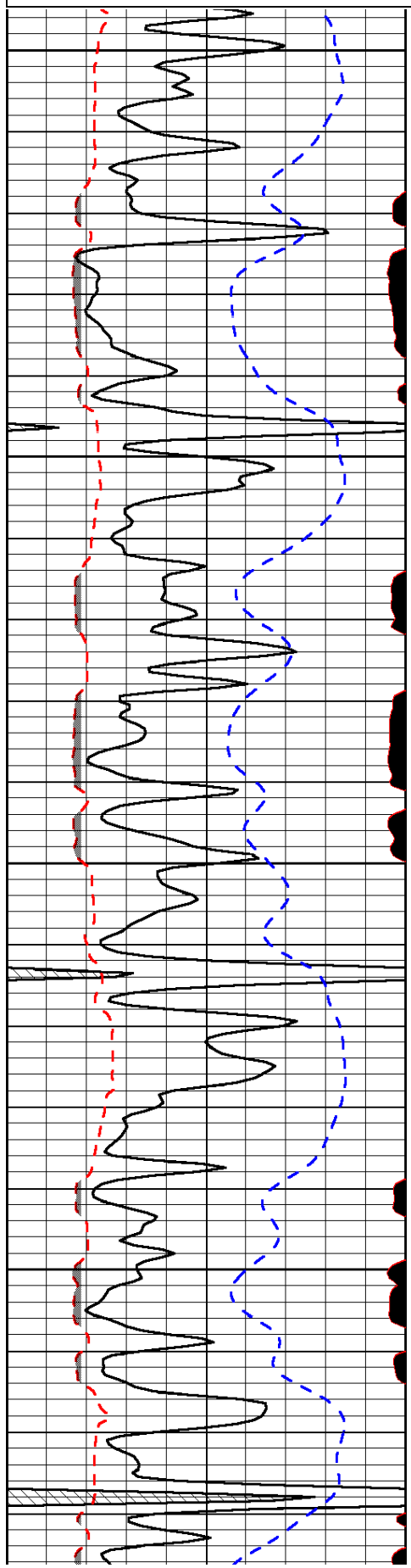
Ness City KS, West to County Line,
West to Turkey Red RD, 2 1/2 North, West Into

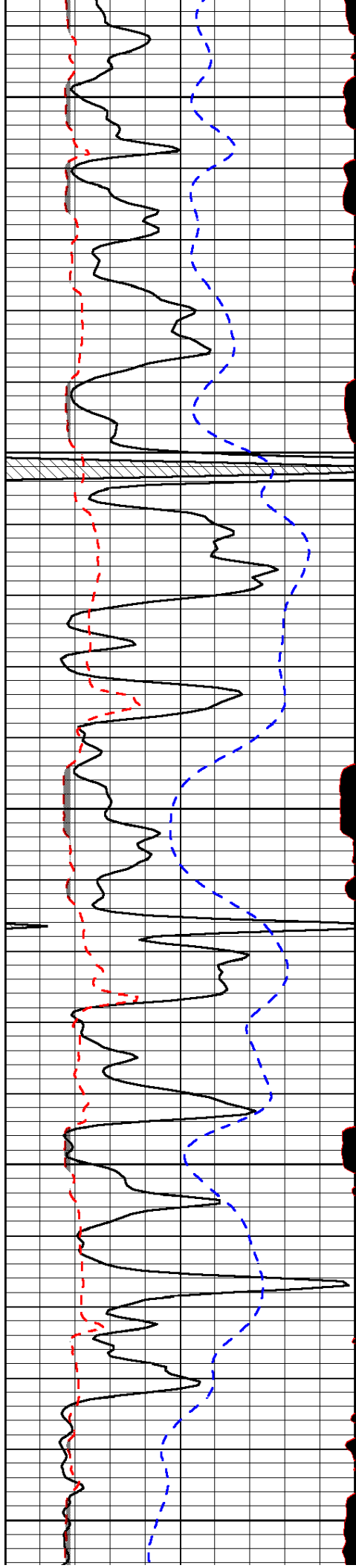
Database File: bluegoose_borell_e_1hd.db
 Dataset Pathname: DIL/bgstk
 Presentation Format: micro
 Dataset Creation: Thu Nov 21 10:29:24 2013
 Charted by: Depth in Feet scaled 1:240

0	Gamma Ray (GAPI)	150
6	MCAL (in)	16
2.875	Mud Cake (in)	7.875
-200	SP (mV)	0

0	Micro Inverse 1 X 1 (Ohm-m)	40
0	Micro Normal 2" (Ohm-m)	40
10000	Line Weight (lb)	0

LSPD
(ft/min)





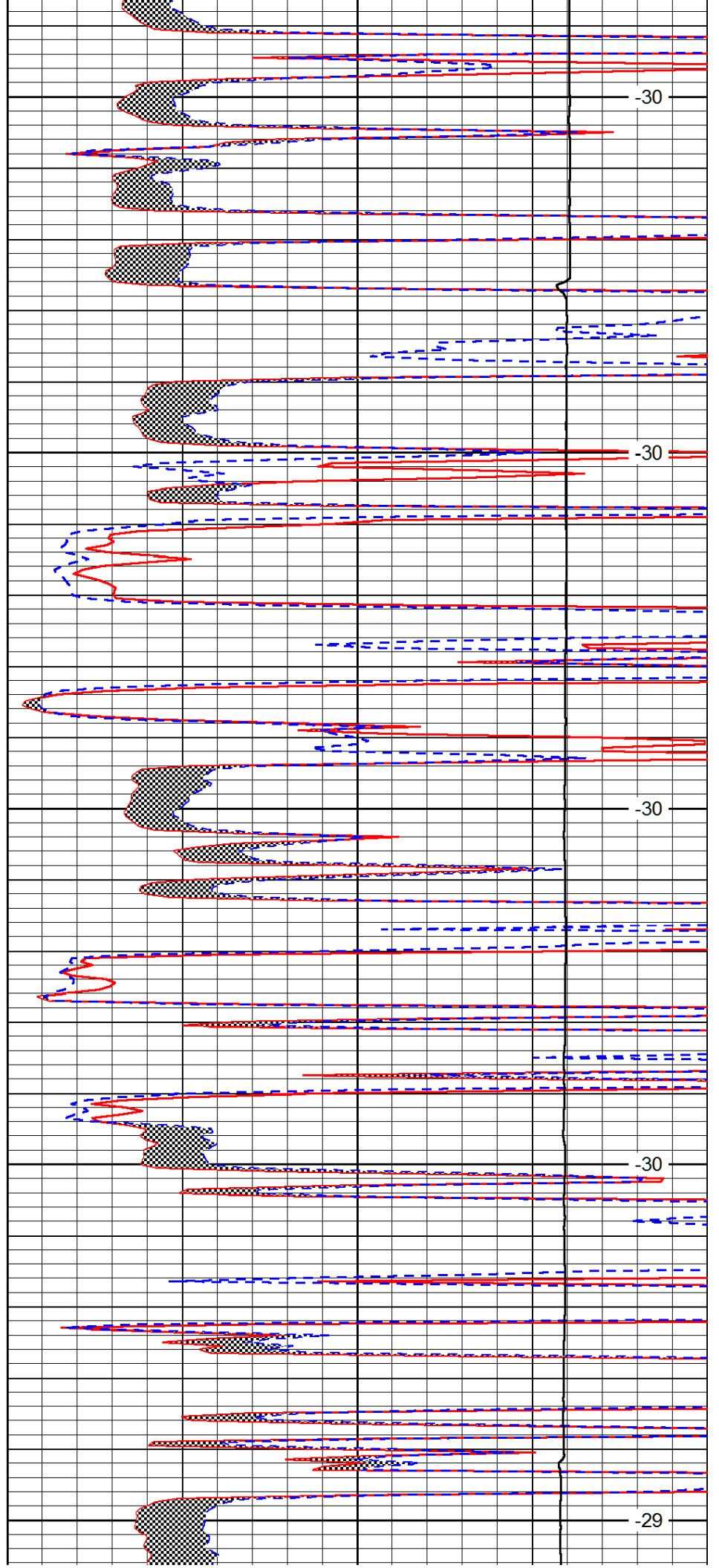
3800

3850

3900

3950

4000



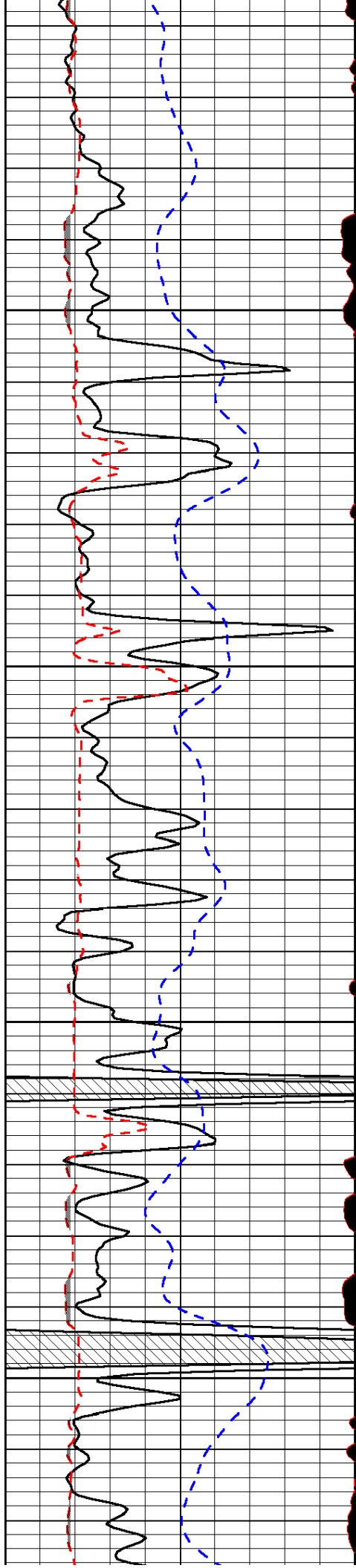
-30

-30

-30

-30

-29

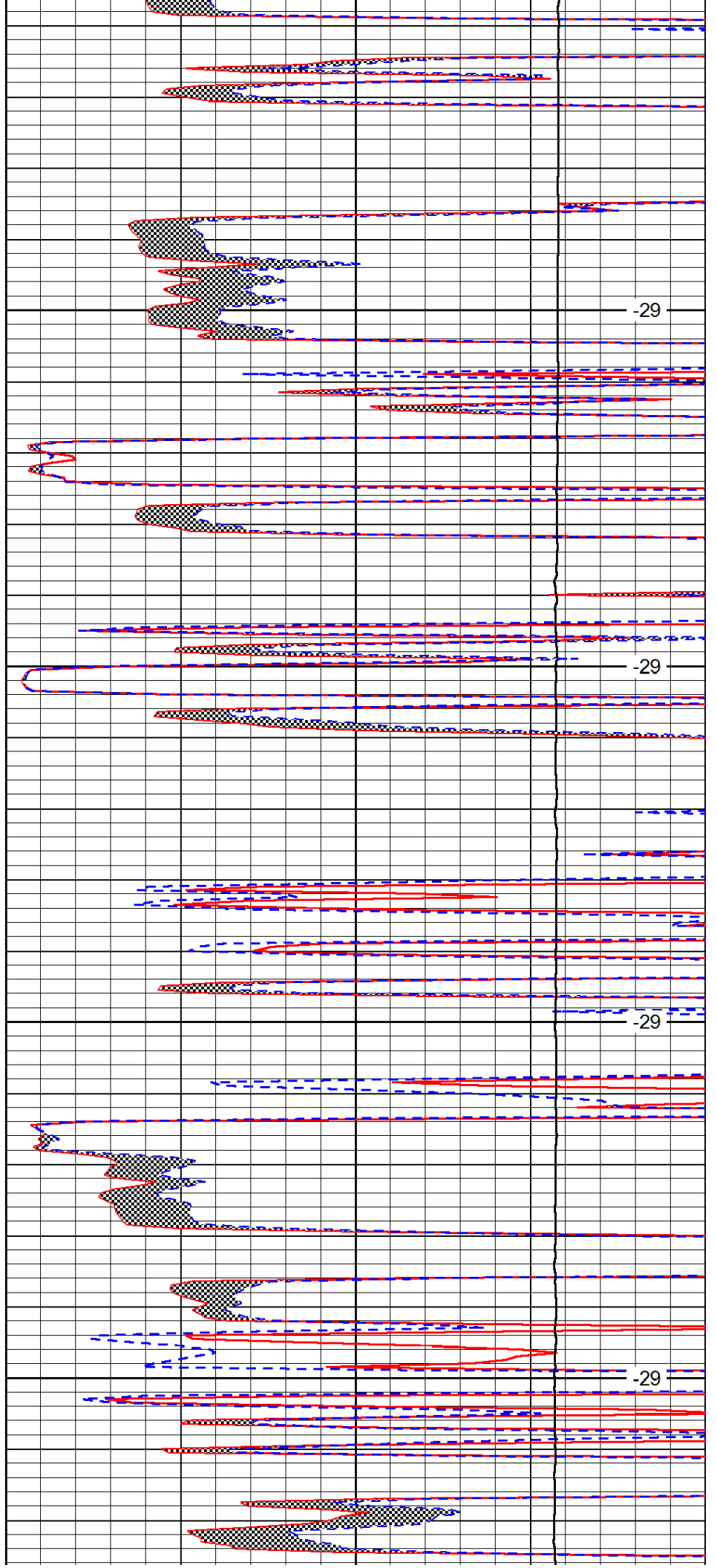


4050

4100

4150

4200

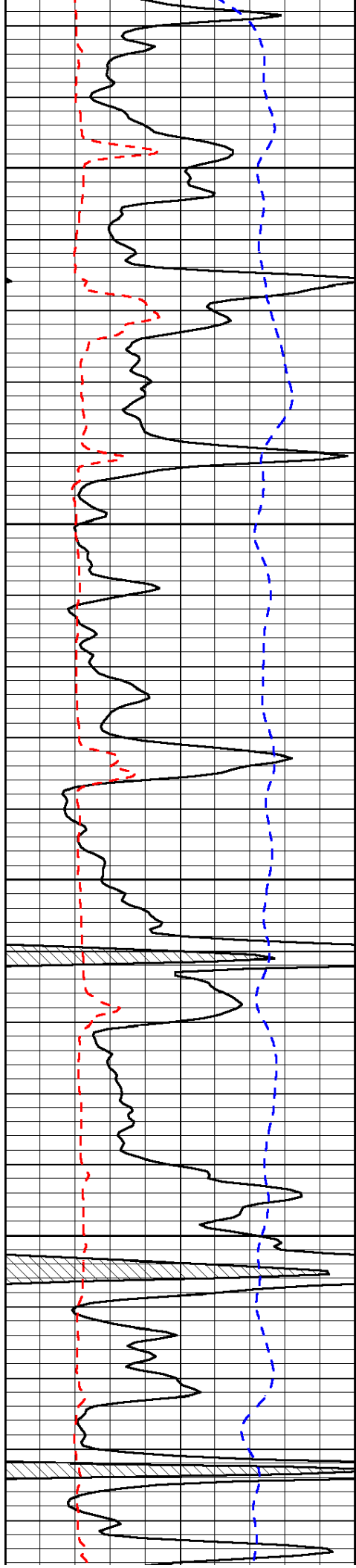


-29

-29

-29

-29

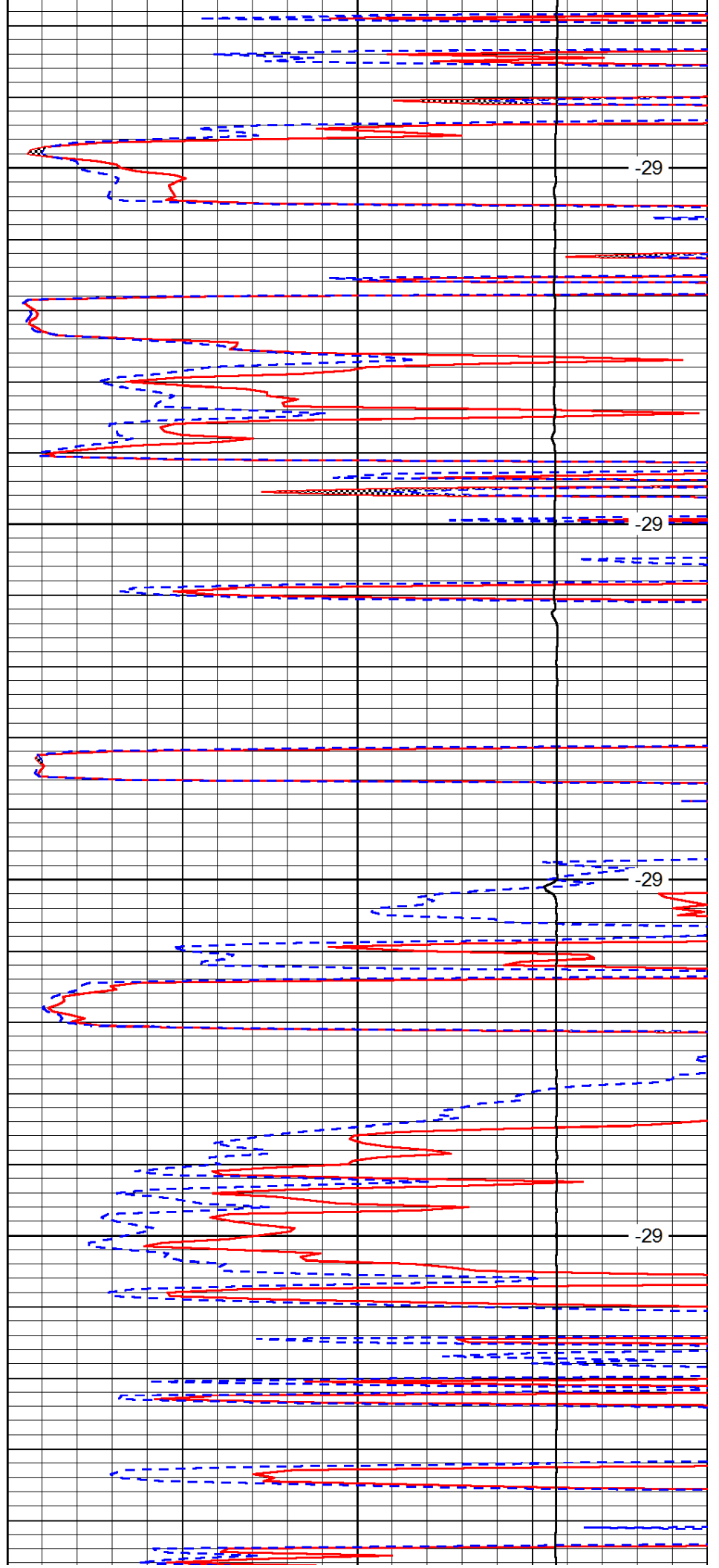


4250

4300

4350

4400

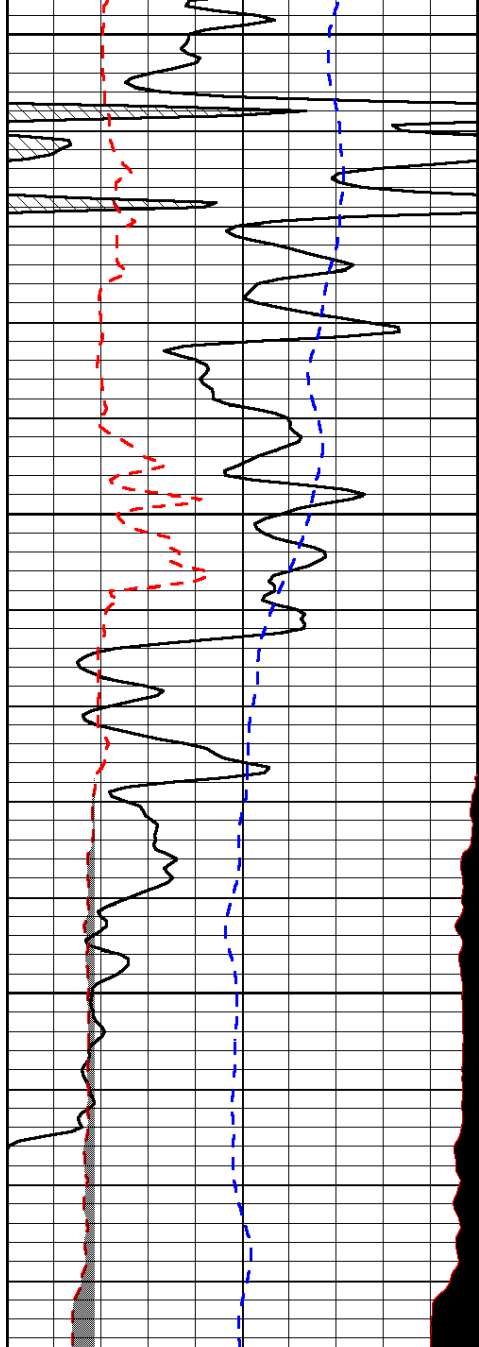


-29

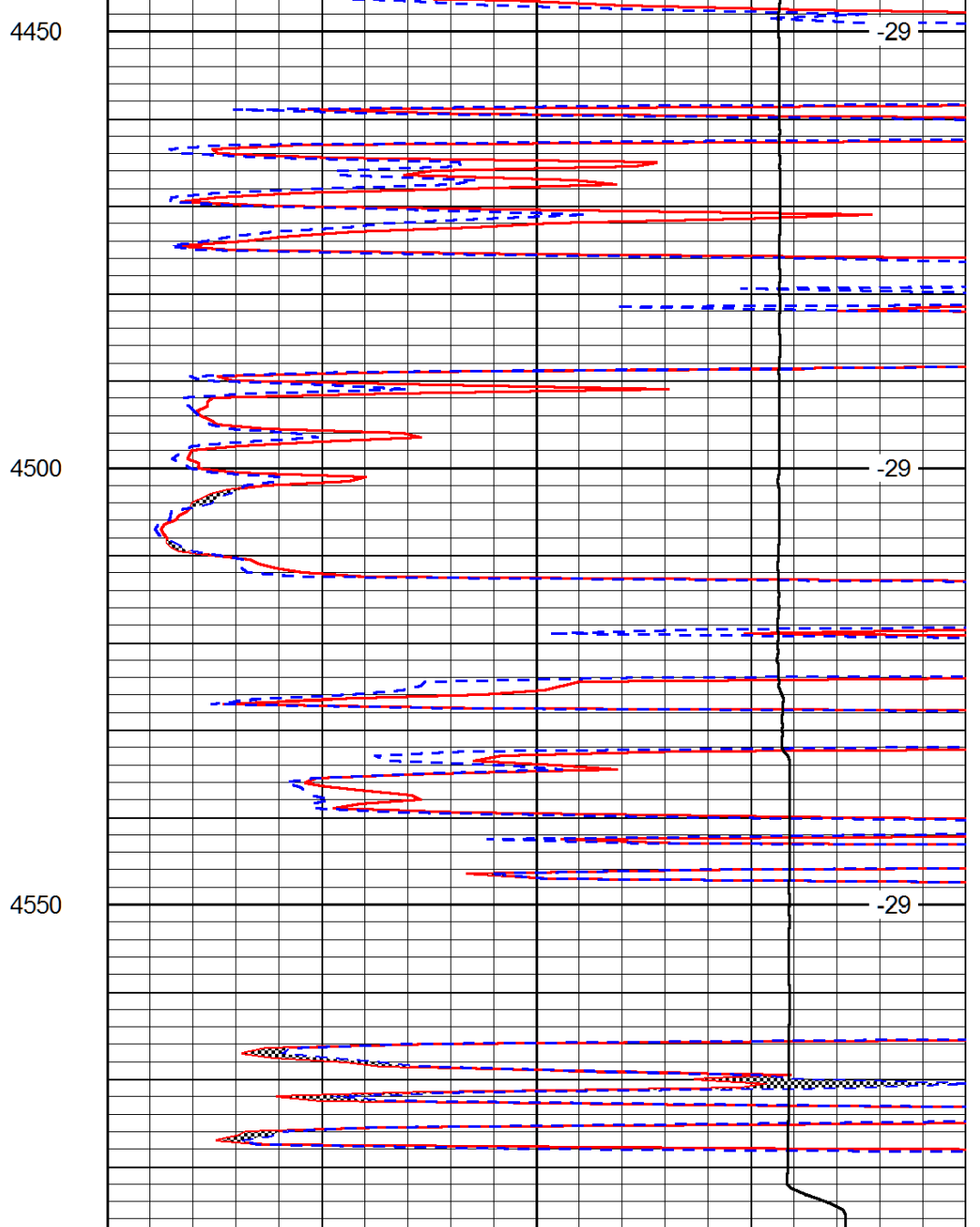
-29

-29

-29



0	Gamma Ray (GAPI)	150
6	MCAL (in)	16
2.875	Mud Cake (in)	7.875
-200	SP (mV)	0



0	Micro Inverse 1 X 1 (Ohm-m)	40
0	Micro Normal 2" (Ohm-m)	40
10000	Line Weight (lb)	0

LSPD
(ft/min)