



Pioneer Energy Services

Dual Induction Log

15-147-20,721-00-00

API No.

Company **Bach Oil Production**

Well **Kenneth # 1**

Field **Starvation Creek**

County **Phillips** State

Kansas

Location

1,500' FNL & 330' FWL

Other Services
CNL/CDL

Sec: **9** Twp: **2S** Rge: **19W**

Permanent Datum **Ground Level** Elevation **2212**

Log Measured From **Kelly Bushing**

5 Ft. Above Perm. Datum

Elevation

K.B. 2217

D.F. 2212

Date

9/23/2013

Run Number

One

Depth Driller

3686

Depth Logger

3686

Bottom Logged Interval

3685

Top Log Interval

200

Casing Driller

8.625 @ 222

Casing Logger

219

Bit Size

7.875

Type Fluid in Hole

Chemical

Salinity,ppm CL

1000

Density / Viscosity

9.2 56

pH / Fluid Loss

10.0 8.8

Source of Sample

Flowline

Rm @ Meas. Temp

1.40 @ 76

Rmf @ Meas. Temp

1.05 @ 76

Rmc @ Meas. Temp

1.89 @ 76

Source of Rmf / Rmc

Charts

Rm @ BHT

.94 @ 113

Operating Rig Time

3 1/2 Hours

Max Rec. Temp. F

113

Equipment Number

108

Location

Hays

Recorded By

J. Long

Witnessed By

Bob Peterson

<<< Fold Here >>>

All interpretations are opinions based on inferences from electrical or other measurements and we cannot and do not guarantee the accuracy or correctness of any interpretation, and we shall not, except in the case of gross or willful negligence on our part, be liable or responsible for any loss, costs, damages, or expenses incurred or sustained by anyone resulting from any interpretation made by any of our officers, agents or employees. These interpretations are also subject to our general terms and conditions set out in our current Price Schedule.

Comments

Thank you for using Pioneer Energy Services
www.pioneerenergy.com
785 625 3858

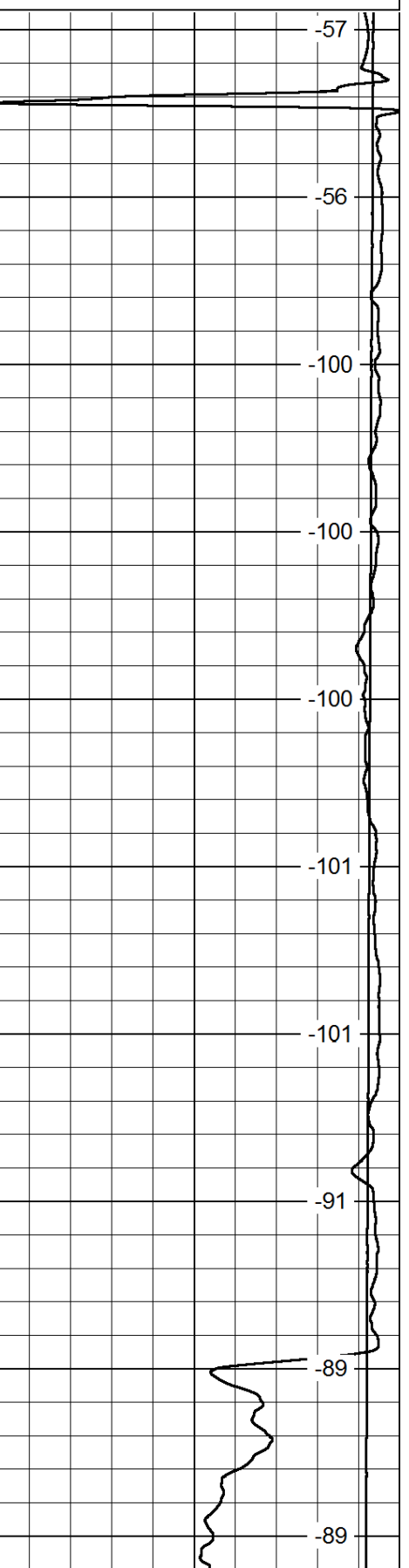
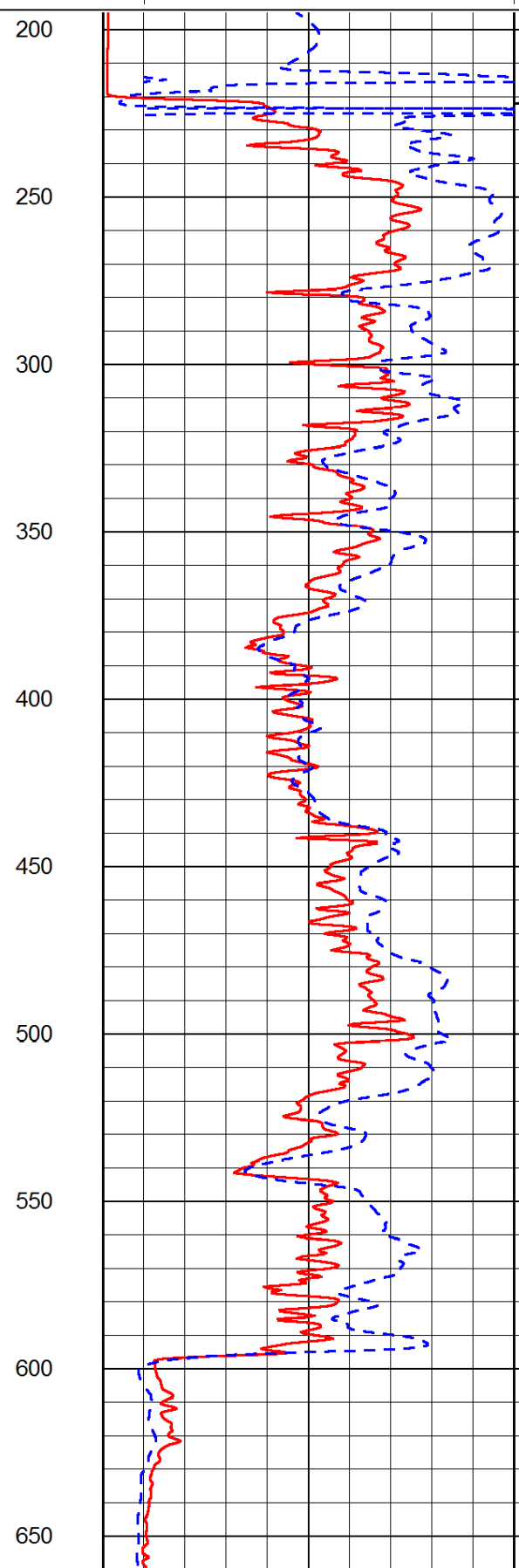
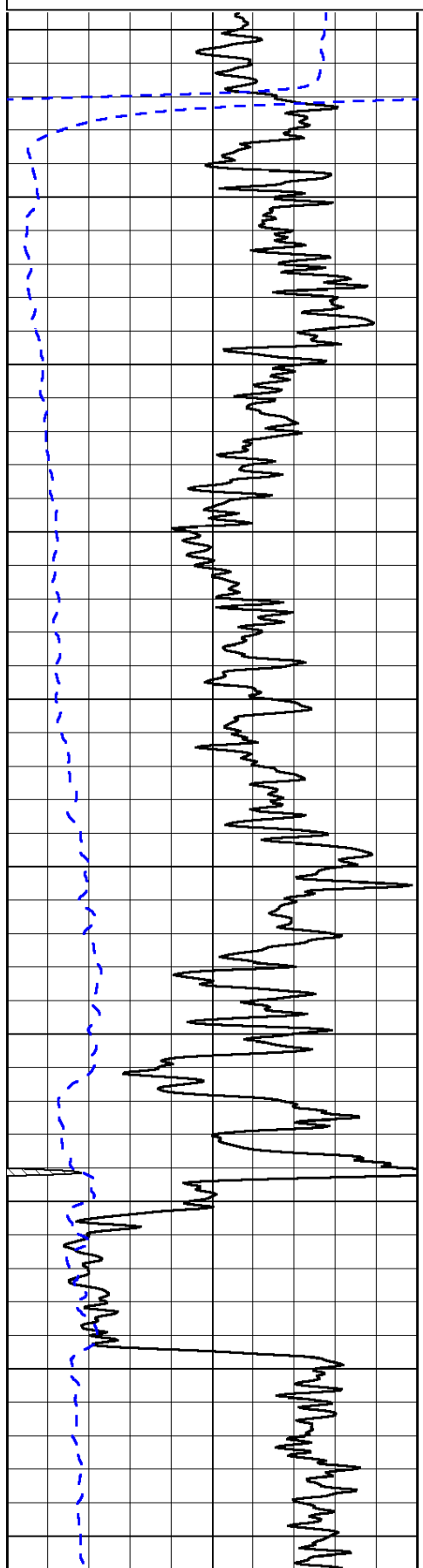
Phillipsburg, 8 North to Hunter Road, 7 West, South Into

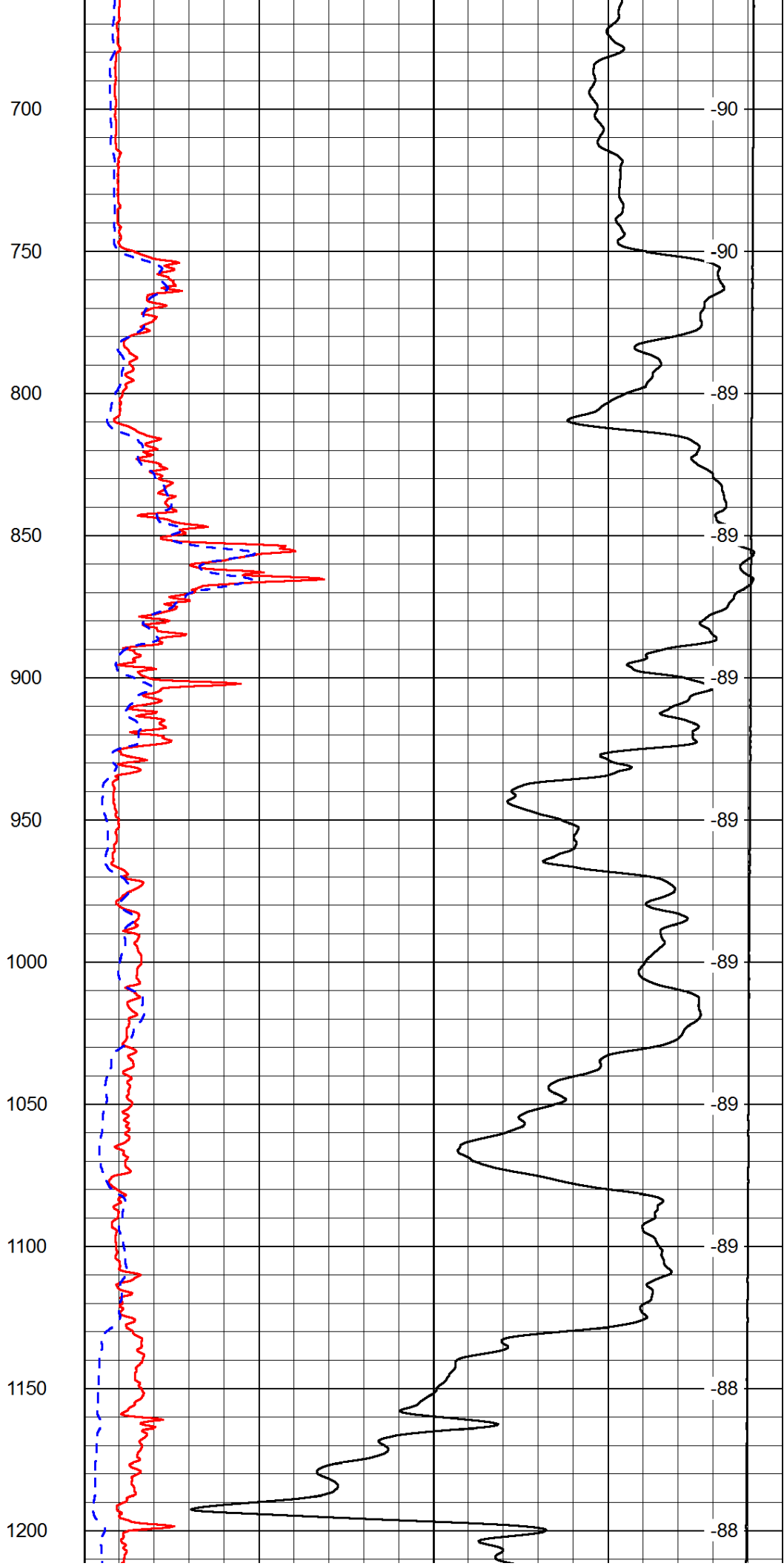
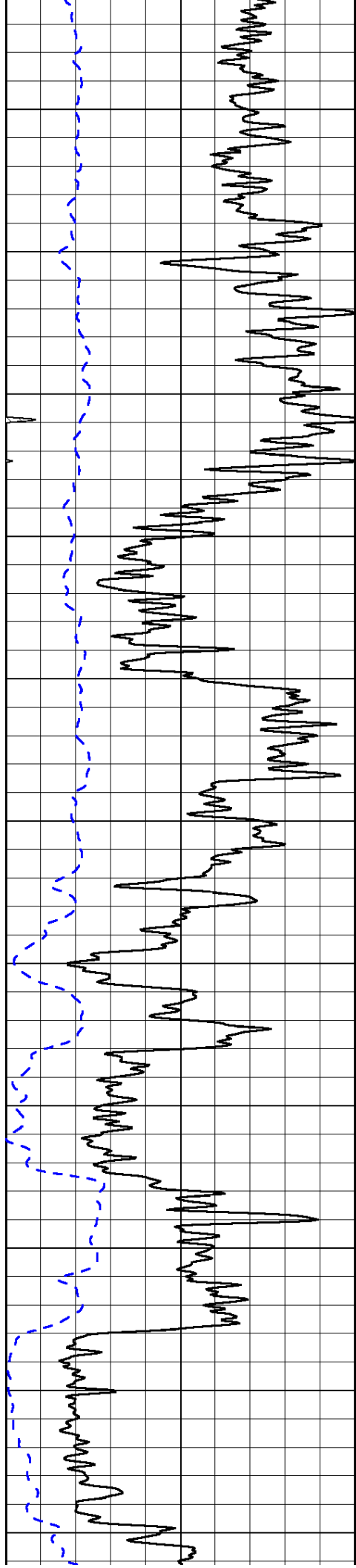
Database File: c:\warrior\data\bach_kenneth # 1\bach_kenneth_1hd.db
Dataset Pathname: dil/bachstck
Presentation Format: dil2in
Dataset Creation: Mon Sep 23 05:53:57 2013
Charted by: Depth in Feet scaled 1:600

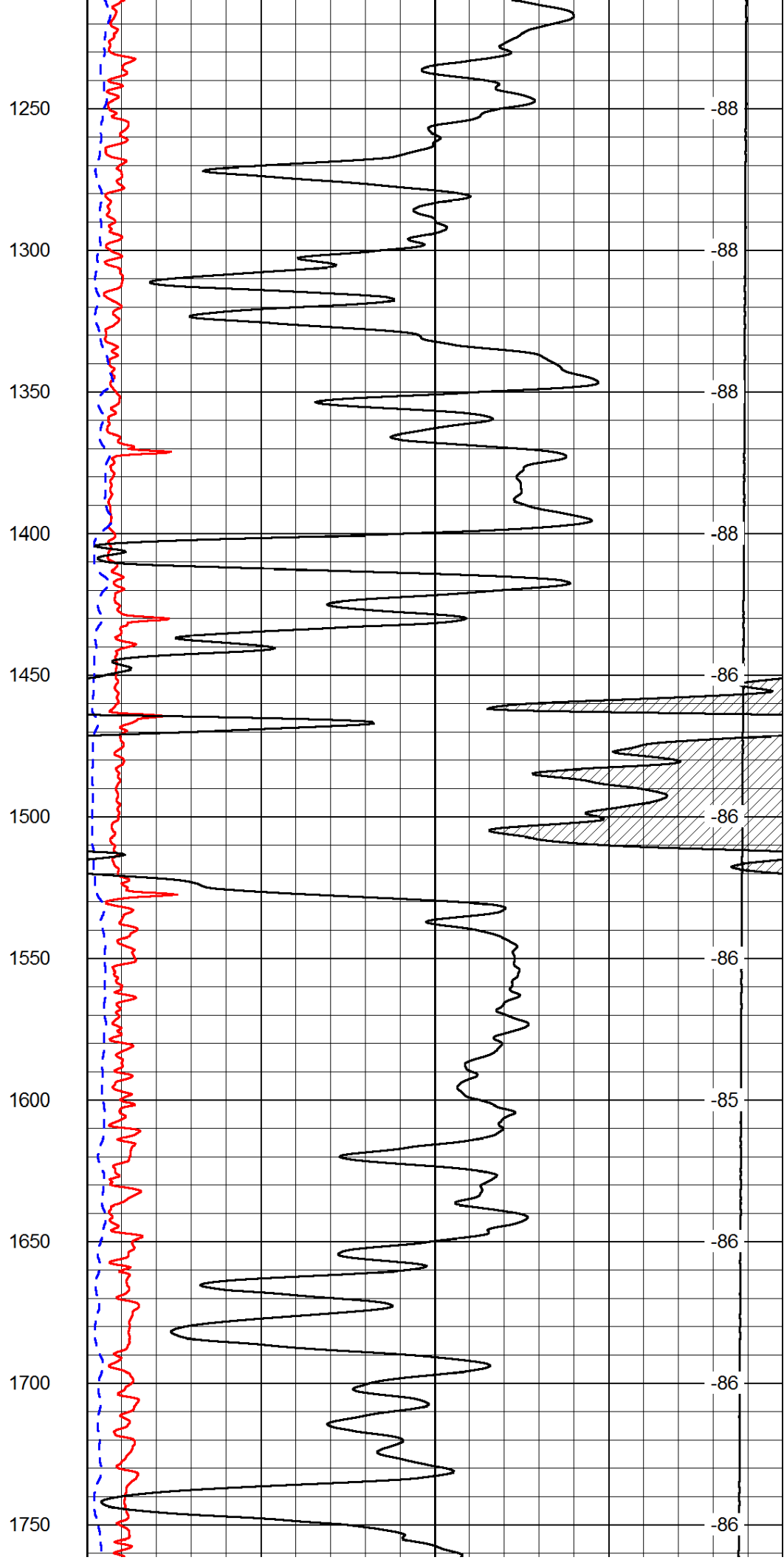
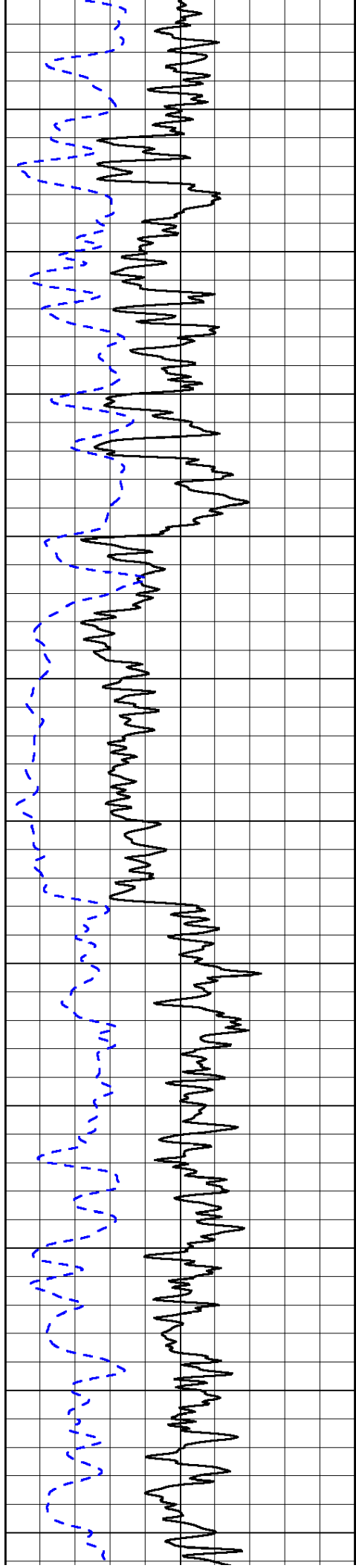
0	Gamma Ray	150
-200	SP (mV)	0

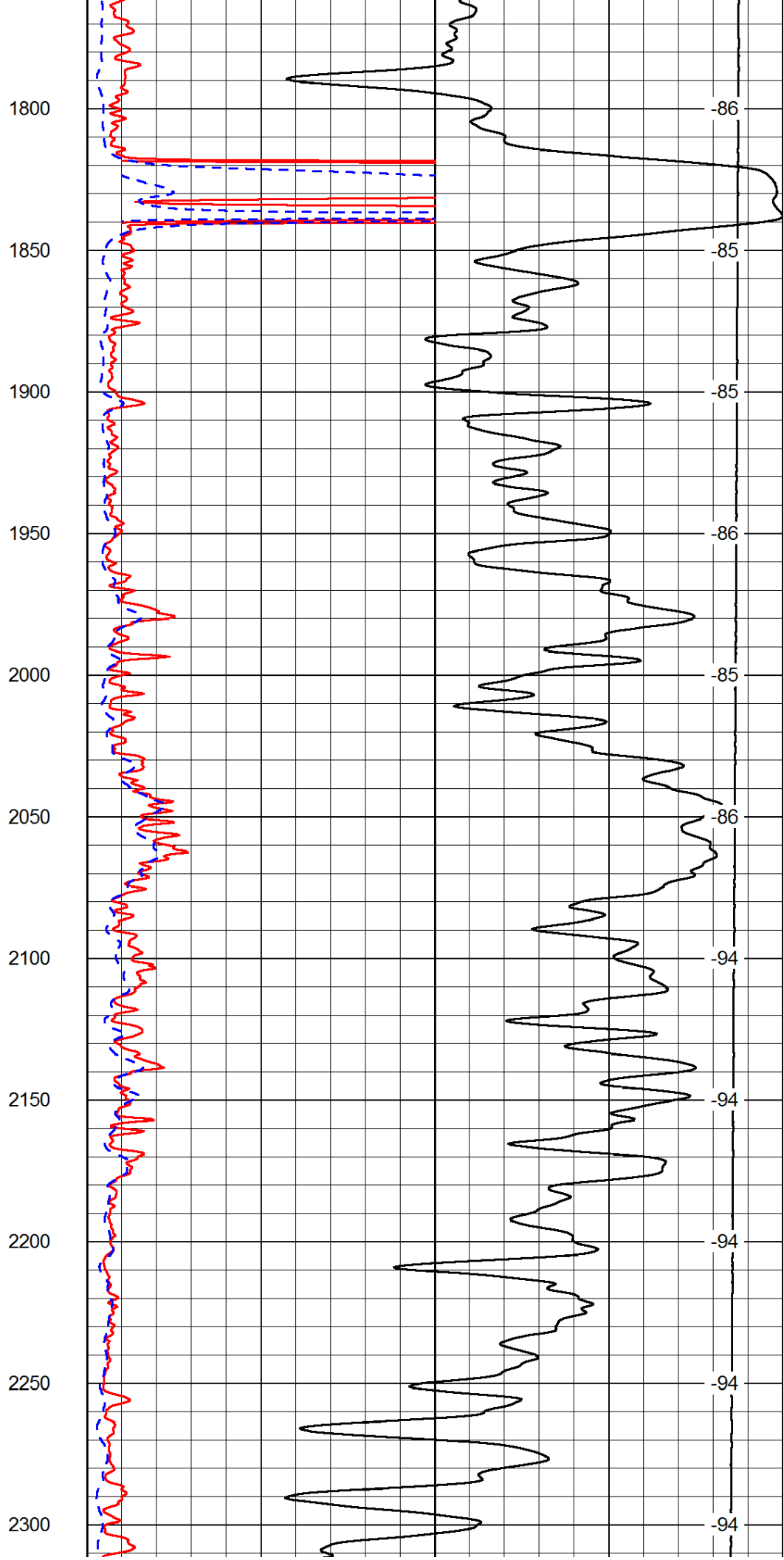
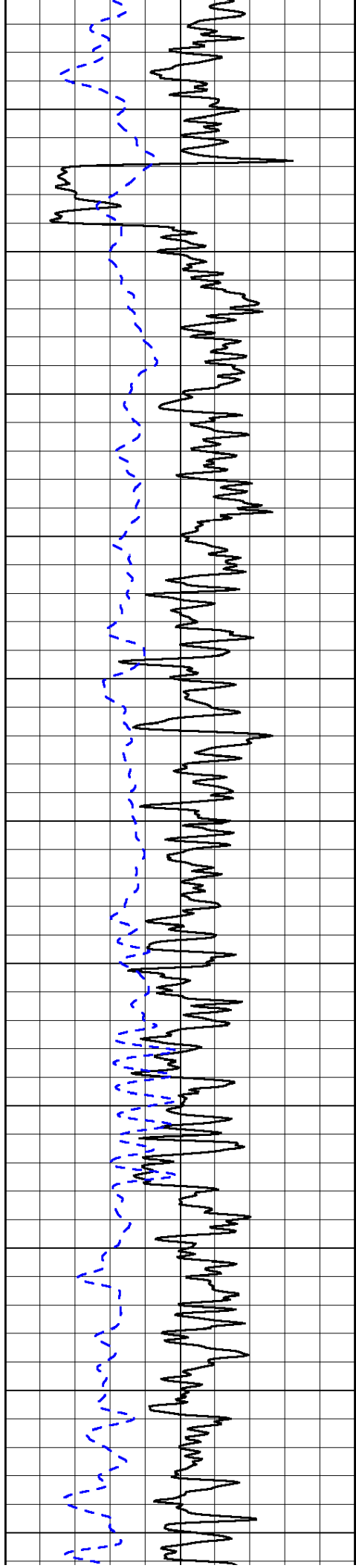
0	Shallow Resistivity	50
0	Deep Resistivity	50
1000	Conductivity	0
15000	Line Tension	0
50	Shallow Resistivity	500
50	Deep Resistivity	500

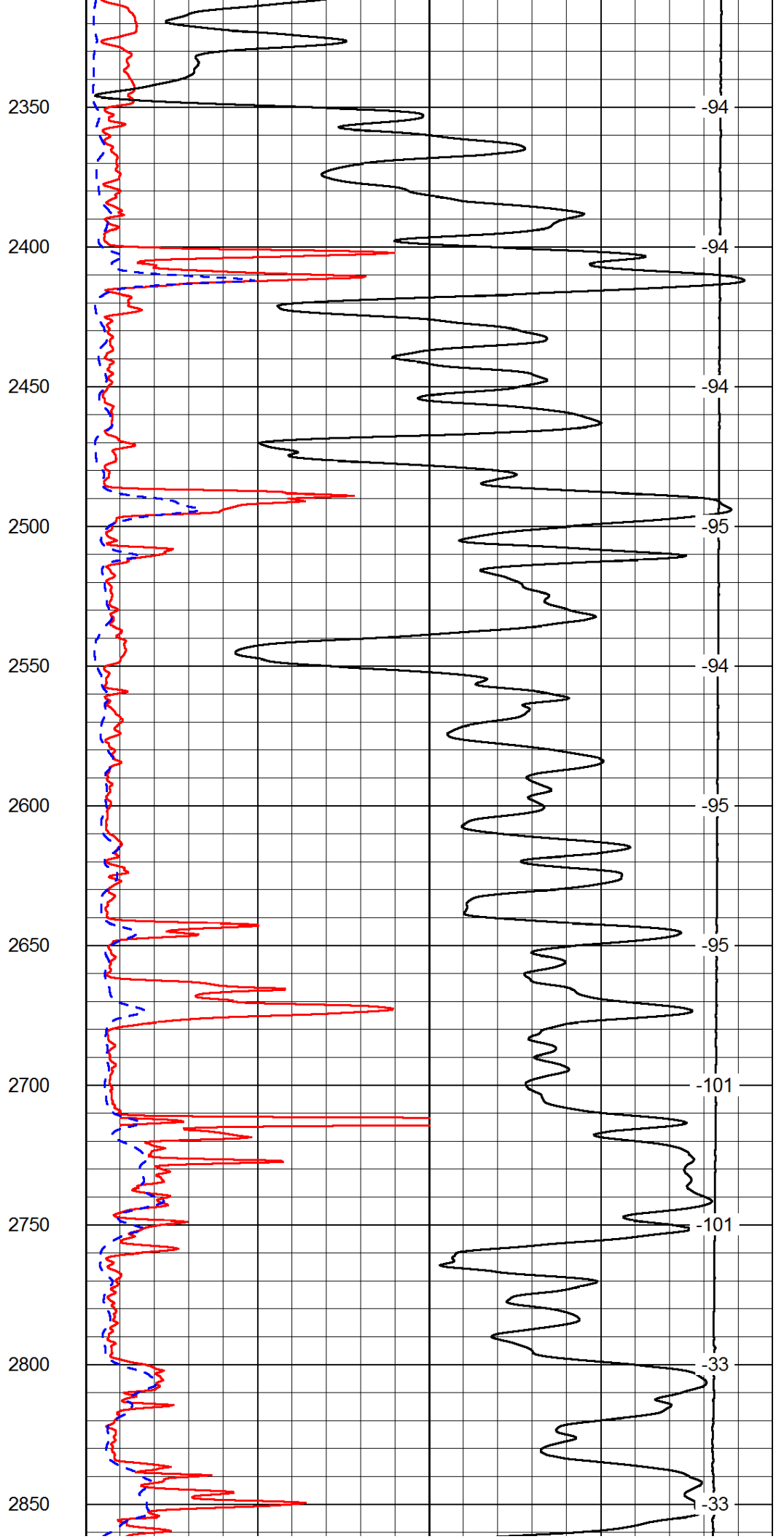
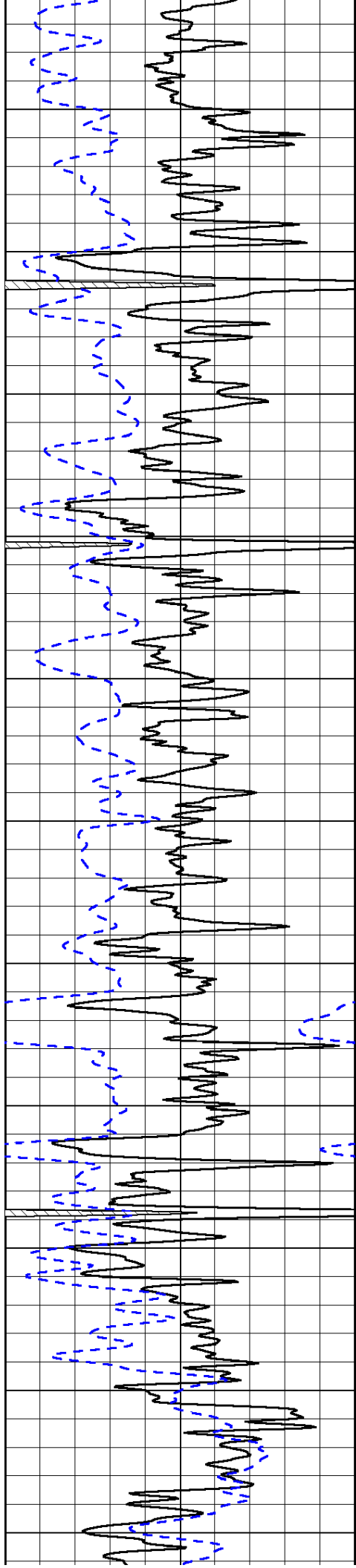
LSPD

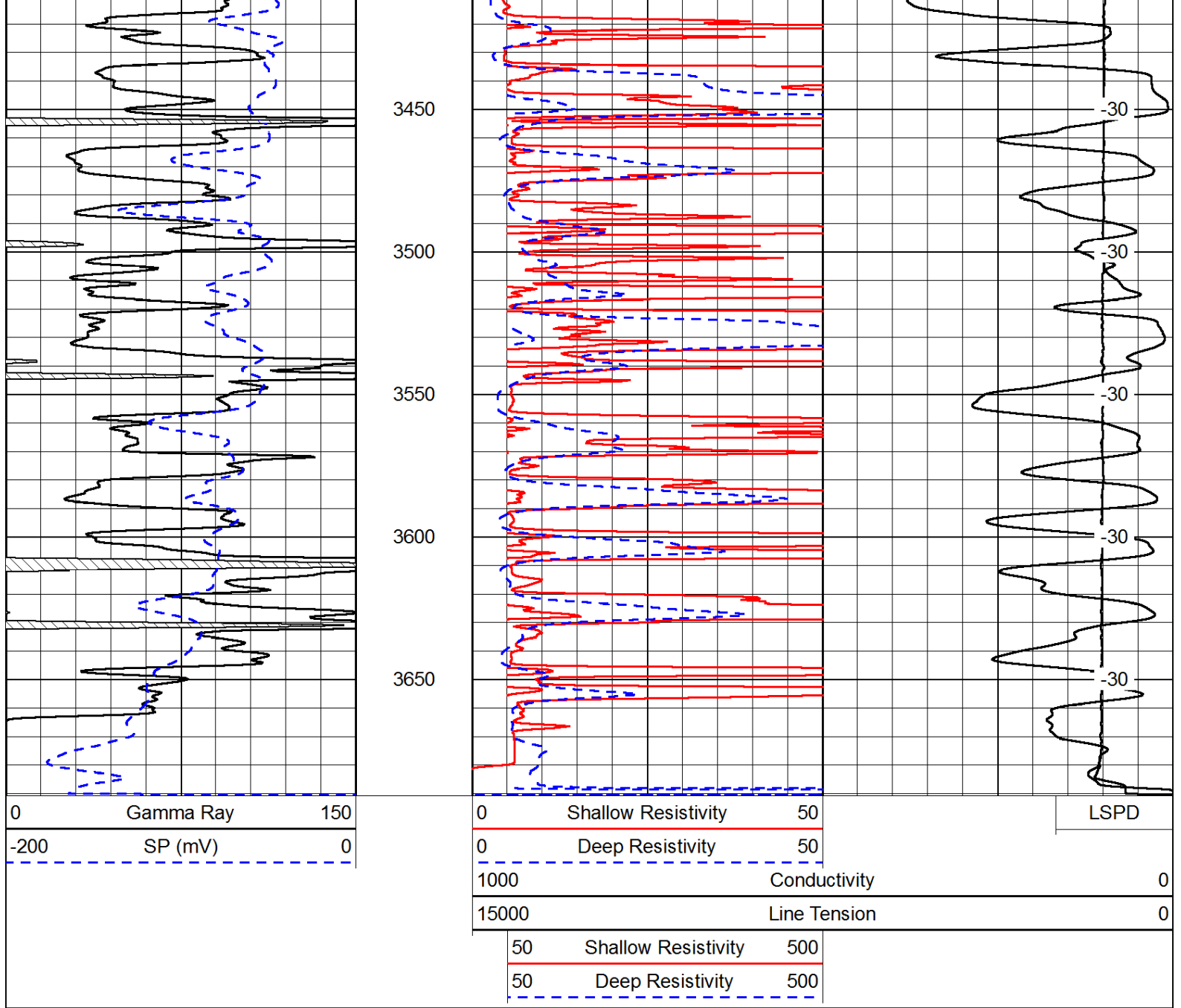




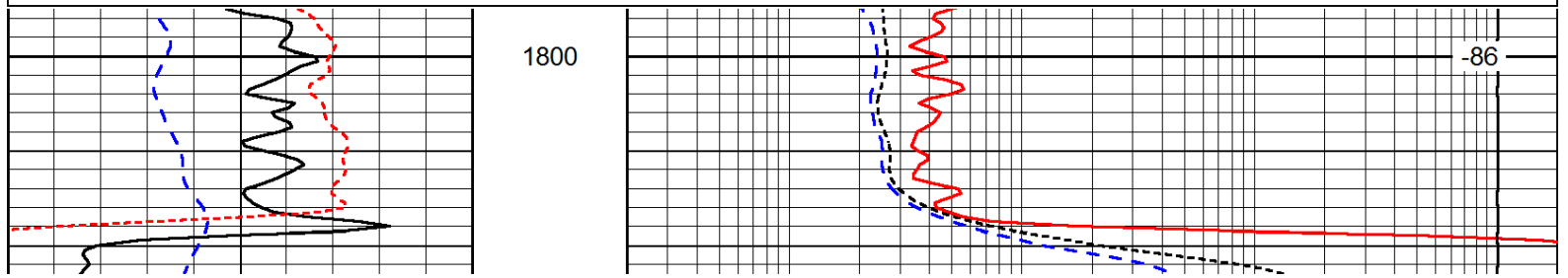
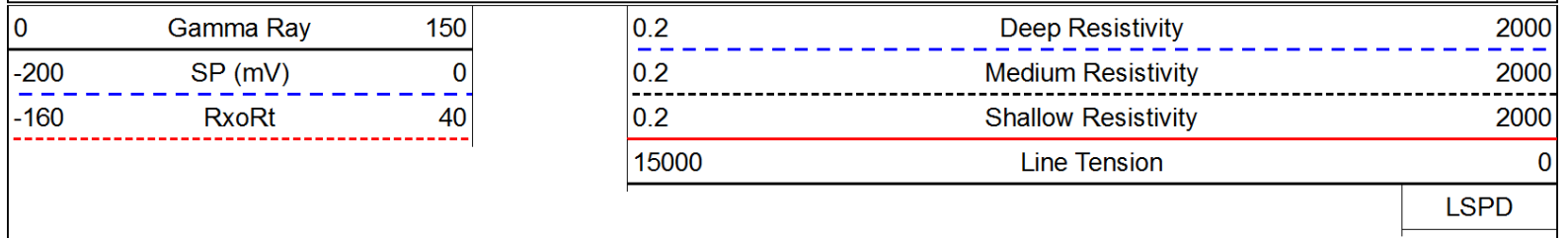


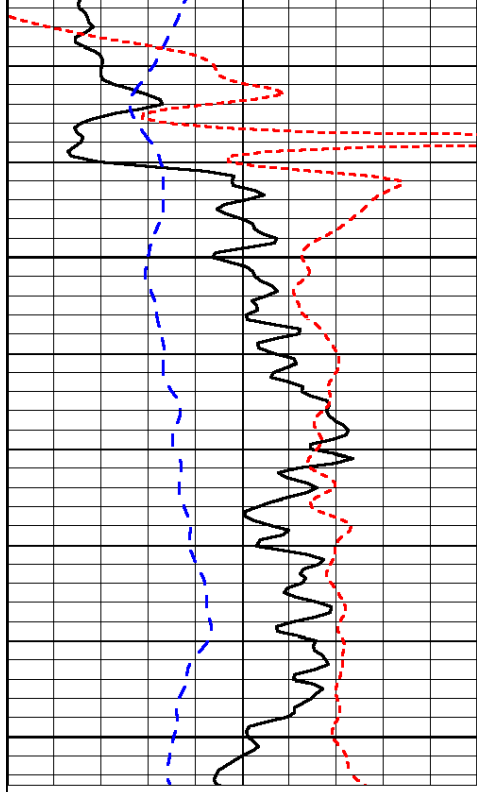






Database File: c:\warrior\data\bach_kenneth # 1\bach_kenneth_1hd.db
 Dataset Pathname: dil/bachstck
 Presentation Format: dil
 Dataset Creation: Mon Sep 23 05:53:57 2013
 Charted by: Depth in Feet scaled 1:240

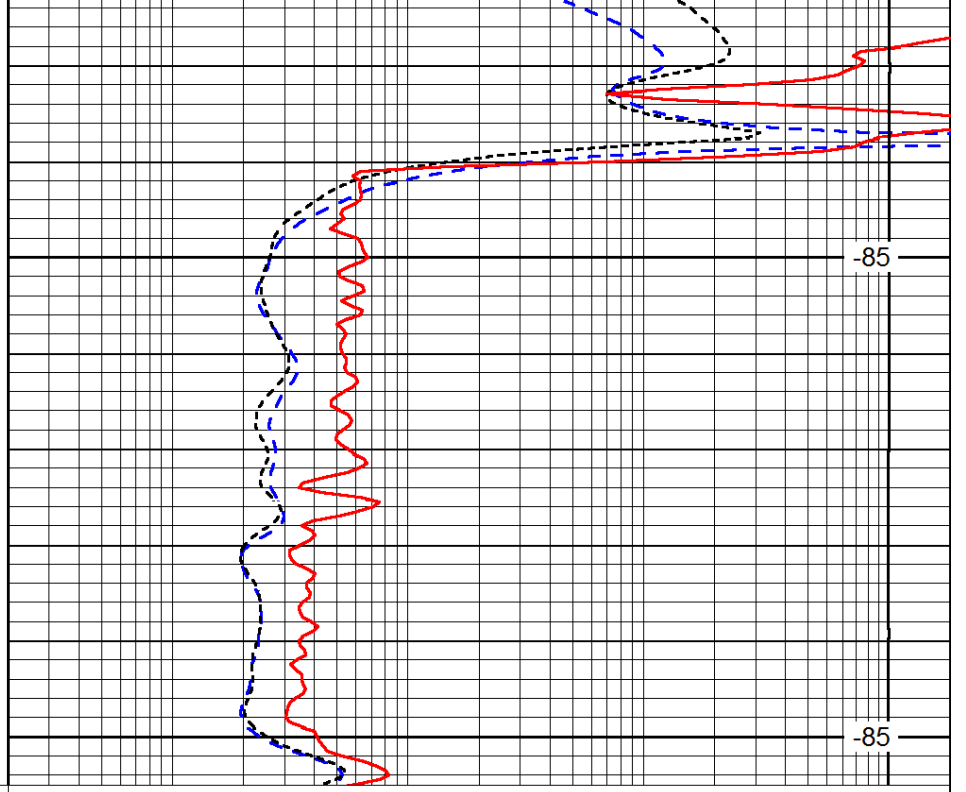




0	Gamma Ray	150
-200	SP (mV)	0
-160	RxoRt	40

1850

1900



0.2	Deep Resistivity	2000
0.2	Medium Resistivity	2000
0.2	Shallow Resistivity	2000
15000	Line Tension	0

-85

-85

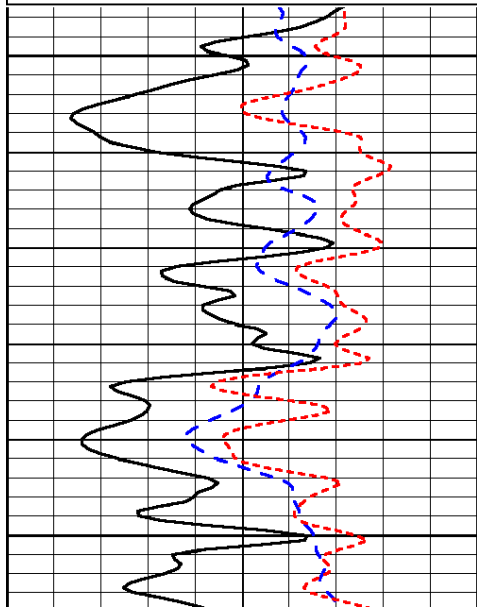
LSPD

Database File: c:\warrior\data\bach_kenneth # 1\bach_kenneth_1hd.db
 Dataset Pathname: dil/bachstck
 Presentation Format: dil
 Dataset Creation: Mon Sep 23 05:53:57 2013
 Charted by: Depth in Feet scaled 1:240

0	Gamma Ray	150
-200	SP (mV)	0
-160	RxoRt	40

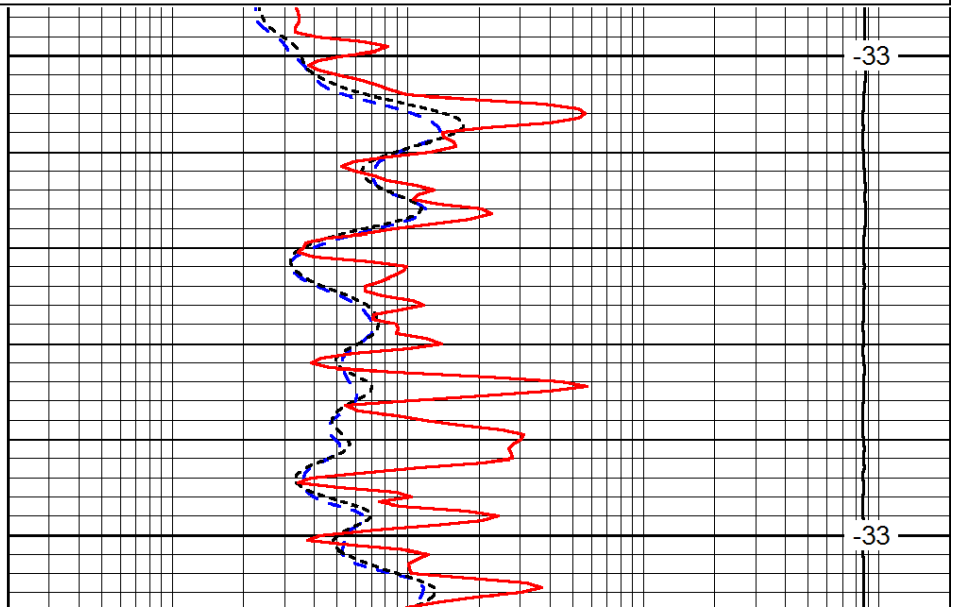
0.2	Deep Resistivity	2000
0.2	Medium Resistivity	2000
0.2	Shallow Resistivity	2000
15000	Line Tension	0

LSPD



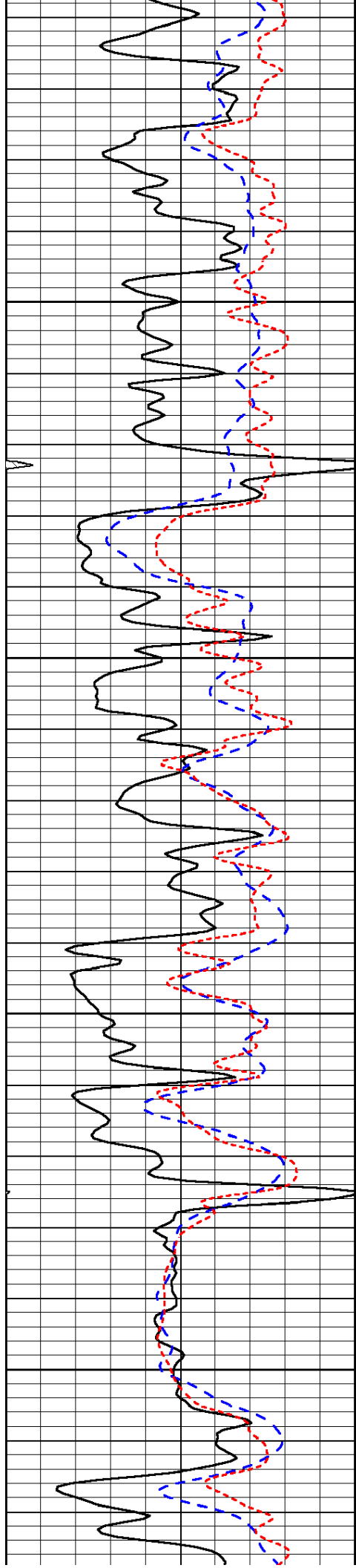
3050

3100



-33

-33

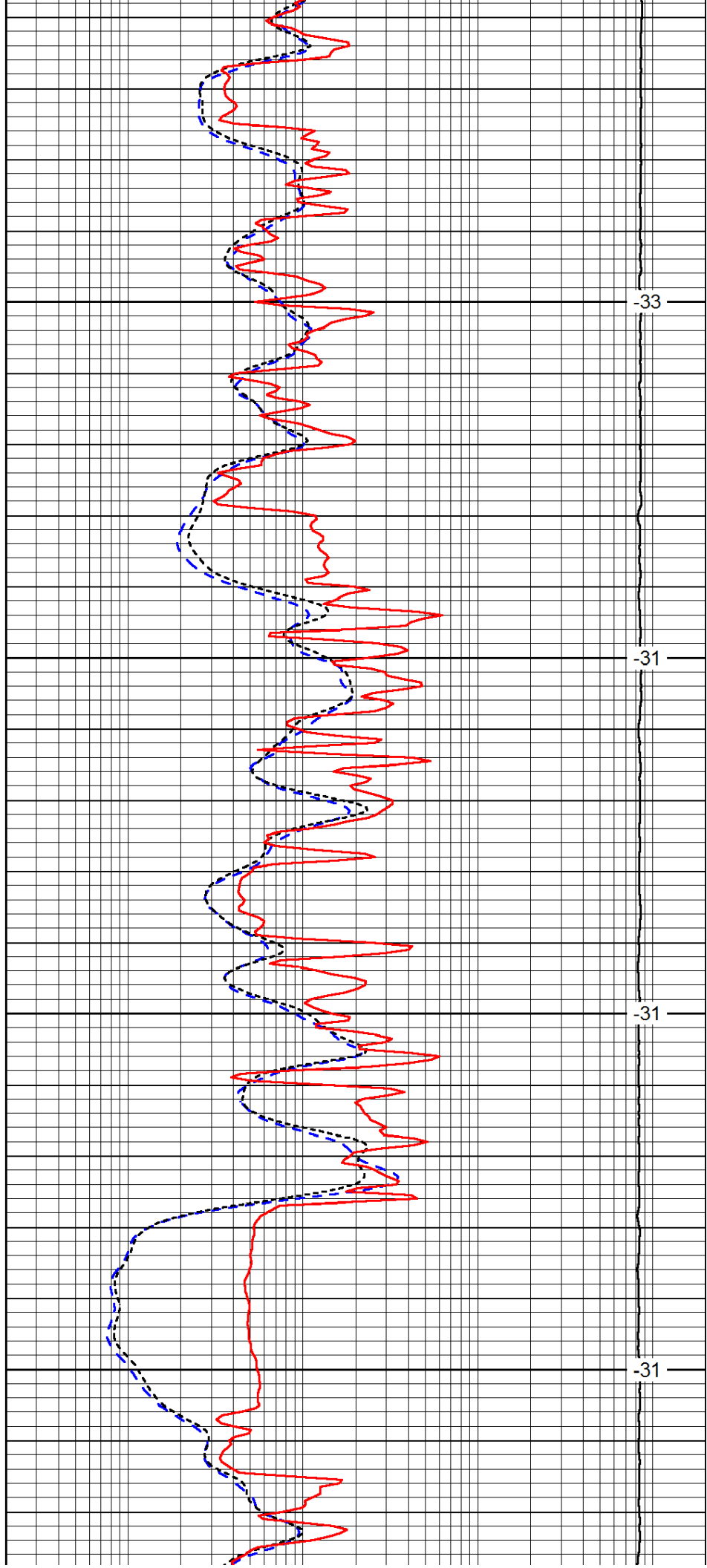


3150

3200

3250

3300

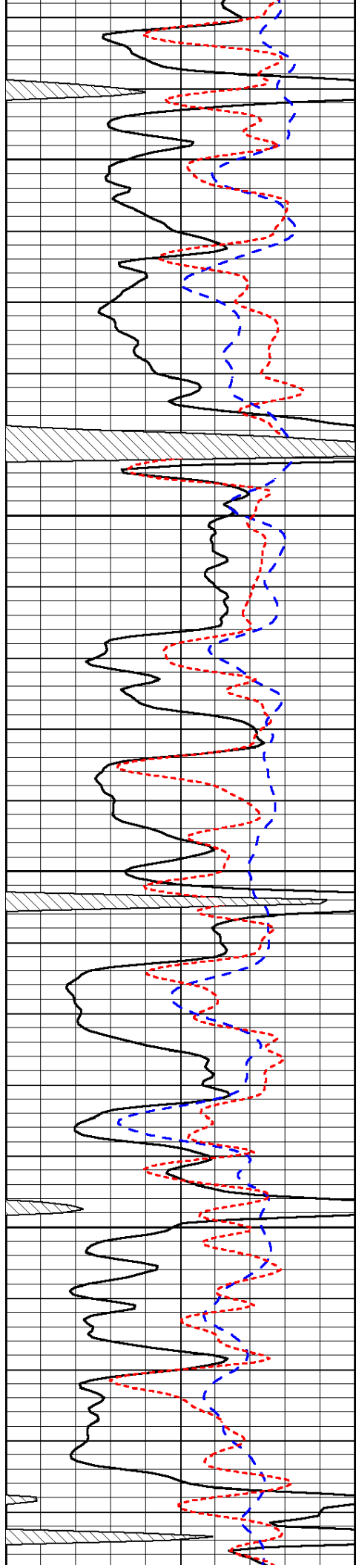


-33

-31

-31

-31

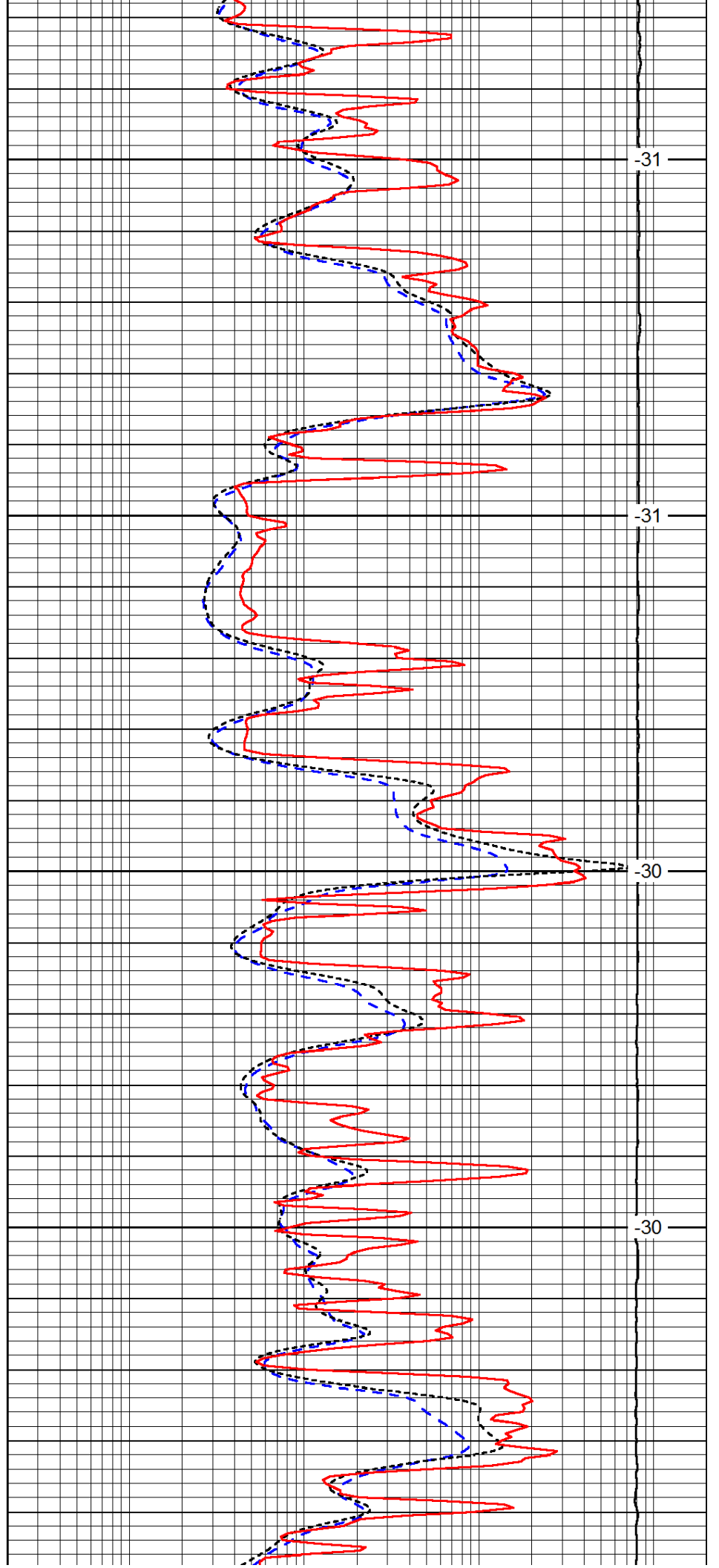


3350

3400

3450

3500

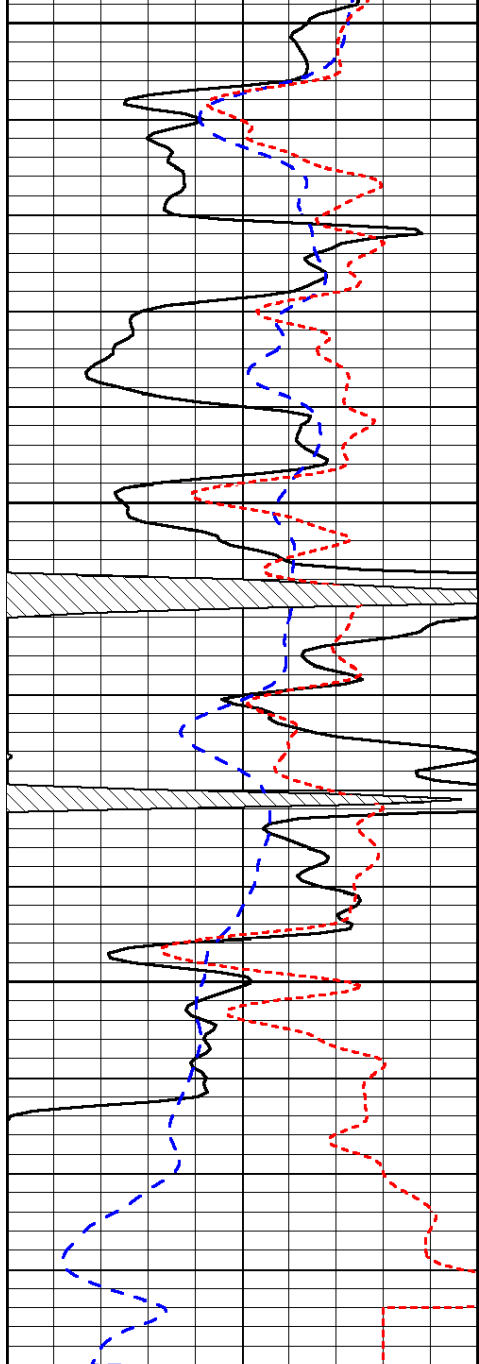


-31

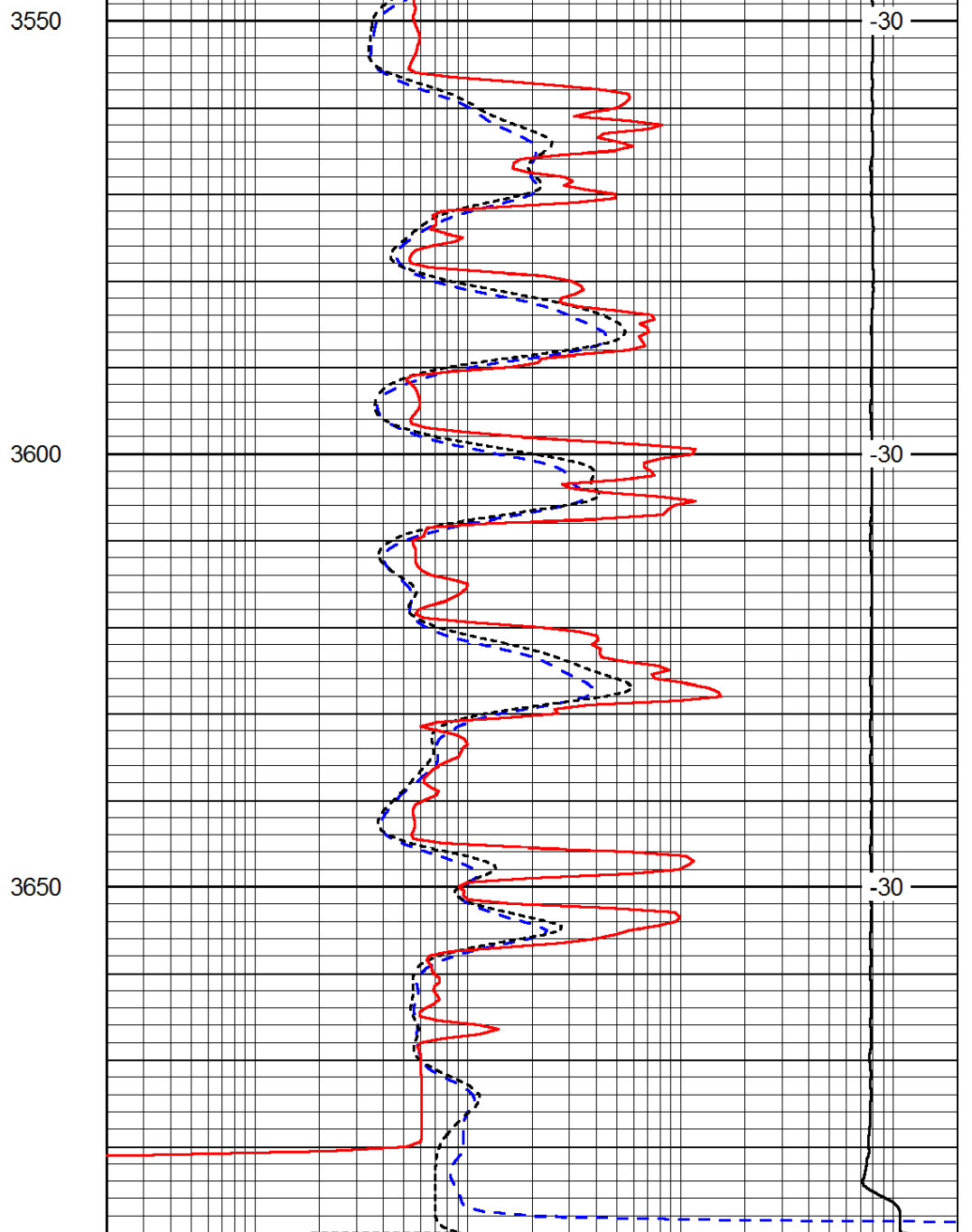
-31

-30

-30



0	Gamma Ray	150
-200	SP (mV)	0
-160	RxoRt	40



0.2	Deep Resistivity	2000
0.2	Medium Resistivity	2000
0.2	Shallow Resistivity	2000
15000	Line Tension	0

LSPD