



Pioneer Energy Services

Dual Compensated Porosity Log

15-147-20,721-00-00

API No.

Company **Bach Oil Production**
 Well **Kenneth # 1**
 Field **Starvation Creek**
 County **Phillips** State **Kansas**

Location **1,500' FNL & 330' FWL**

Sec: **9** Twp: **2S** Rge: **19W**

Other Services
DIL

Permanent Datum **Ground Level** Elevation **2212**
 Log Measured From **Kelly Bushing** **5** Ft. Above Perm. Datum
 Drilling Measured From **Kelly Bushing**

Elevation
K.B. **2217**
D.F. **2212**
G.L. **2212**

Date	9/23/2013	
Run Number	One	
Type Log	CNL / CDL	
Depth Driller	3686	
Depth Logger	3686	
Bottom Logged Interval	3665	
Top Logged Interval	3050	
Type Fluid In Hole	Chemical	
Salinity, PPM CL	1000	
Density	9.2	
Level	Full	
Max. Rec. Temp. F	113	
Operating Rig Time	3 1/2 Hours	
Equipment -- Location	108 Hays	
Recorded By	J. Long	
Witnessed By	Bob Peterson	

Borehole Record

Run No.	Bit	From	To	Size	Wgt.	From	To
1	12.25	00	222	8.625	24#	00	222
2	7.875	222	3686				

Casing Record

<<< Fold Here >>>

All interpretations are opinions based on inferences from electrical or other measurements and we cannot and do not guarantee the accuracy or correctness of any interpretation, and we shall not, except in the case of gross or willful negligence on our part, be liable or responsible for any loss, costs, damages, or expenses incurred or sustained by anyone resulting from any interpretation made by any of our officers, agents or employees. These interpretations are also subject to our general terms and conditions set out in our current Price Schedule.

Comments

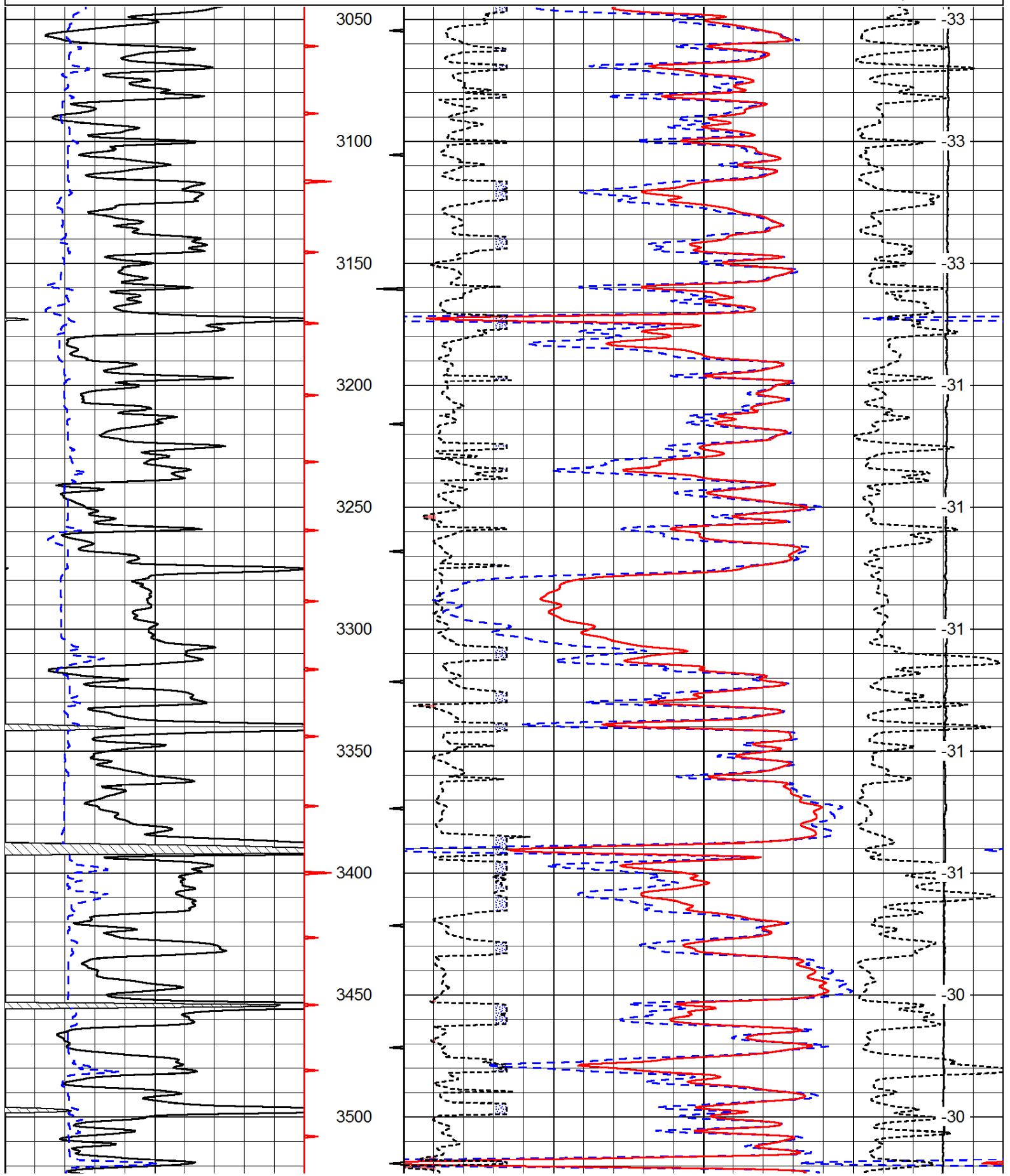
Thank you for using Pioneer Energy Services
www.pioneerenergy.com
 785 625 3858

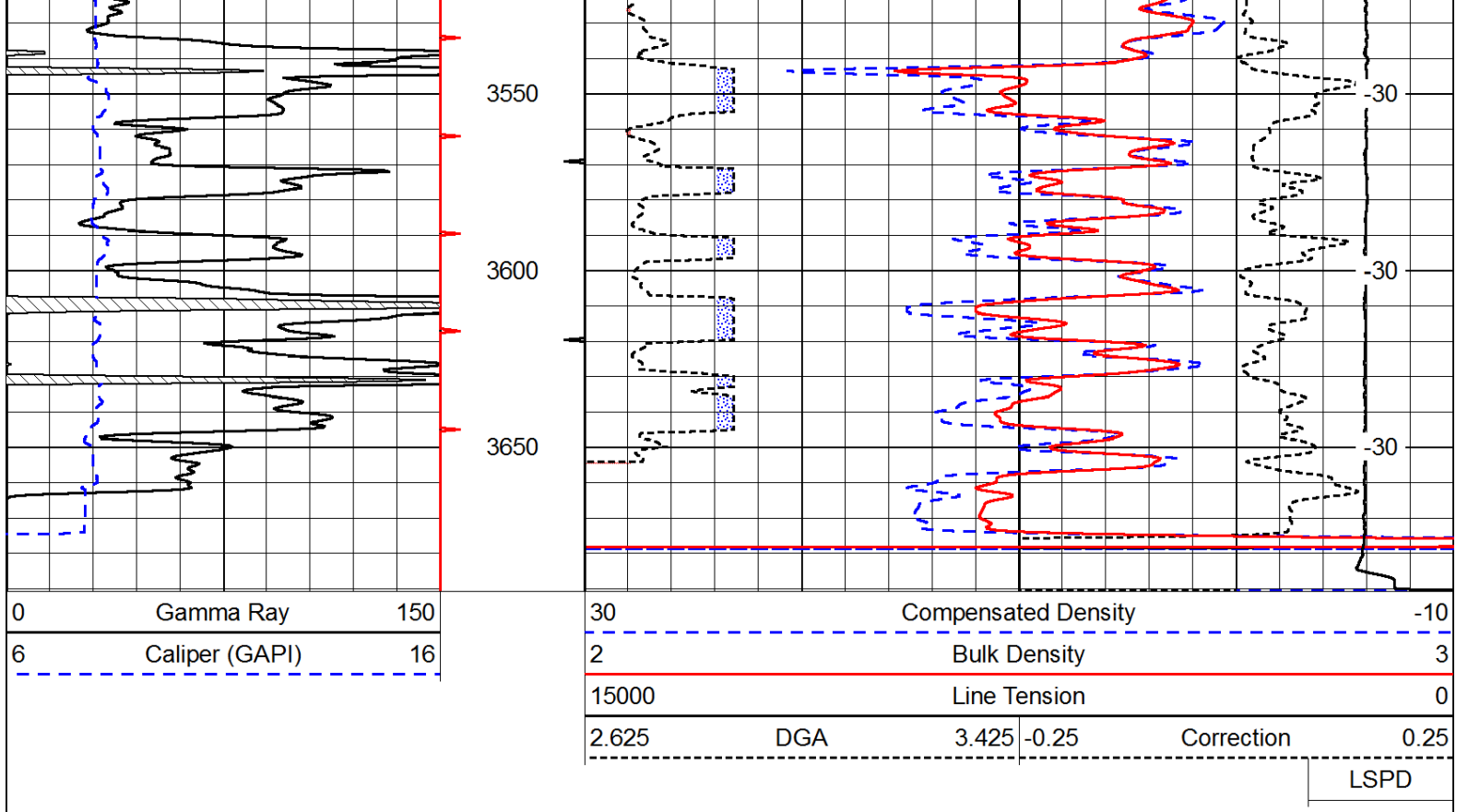
Phillipsburg, 8 North to Hunter Road, 7 West, South Into

Database File: c:\warrior\data\bach_kenneth # 1\bach_kenneth_1hd.db
 Dataset Pathname: dil/bachstck
 Presentation Format: cdl
 Dataset Creation: Mon Sep 23 05:53:57 2013
 Charted by: Depth in Feet scaled 1:600

0	Gamma Ray	150
6	Caliper (GAPI)	16

30	Compensated Density		-10
2	Bulk Density		3
15000	Line Tension		0
2.625	DGA	3.425	-0.25
Correction			0.25
LSPD			





Database File: c:\warrior\data\bach_kenneth # 1\bach_kenneth_1hd.db
 Dataset Pathname: dil/bachstck
 Presentation Format: cndlspec
 Dataset Creation: Mon Sep 23 05:53:57 2013
 Charted by: Depth in Feet scaled 1:240

