



GAMMA-RAY-NEUTRON-CCL LOG

Company SM OIL & GAS, INC.
 Well FULSOM "B" #1-A
 Field LENITON
 County CHAUTAUQUA
 State KANSAS

Company SM OIL & GAS, INC.
 Well FULSOM "B" #1-A
 Field LENITON
 County CHAUTAUQUA State KANSAS

Location: API #: SW SE SW SE 210°FSL & 1960°FEL
 SEC 17 TWP 33S RGE 10E
 Permanent Datum GL Elevation 1020'
 Log Measured From GL
 Drilling Measured From GL
 Other Services GR-CBL & PERFORATE
 Elevation

Date	OCTOBER 6, 2015		
Run Number	TWO		
Depth Driller	1651'		
Depth Logger	1642'		
Bottom Logged Interval	1641'		
Top Log Interval	00		
Open Hole Size	7.875"		
Type Fluid	WATER		
Density / Viscosity	NA		
Max. Recorded Temp.	NA		
Estimated Cement Top	SURFACE		
Time Well Ready	ON ARRIVAL		
Time Logger on Bottom	11:45AM		
Equipment Number	48		
Location	HOMINY		
Recorded By	J. FISHER		
Witnessed By	S. MILLER		
	D. GRAHAM		
Borehole Record		Tubing Record	
Run Number	Bit	From	To
ONE	12.25"	00	51'
TWO	7.875"	51'	1651'
Casing Record	Size	Wgt/Ft	Top
Surface String	8.625"	24#	00
Prot. String			
Production String	5.50"	17#	00
Liner			Bottom
			50.12'
			1644'

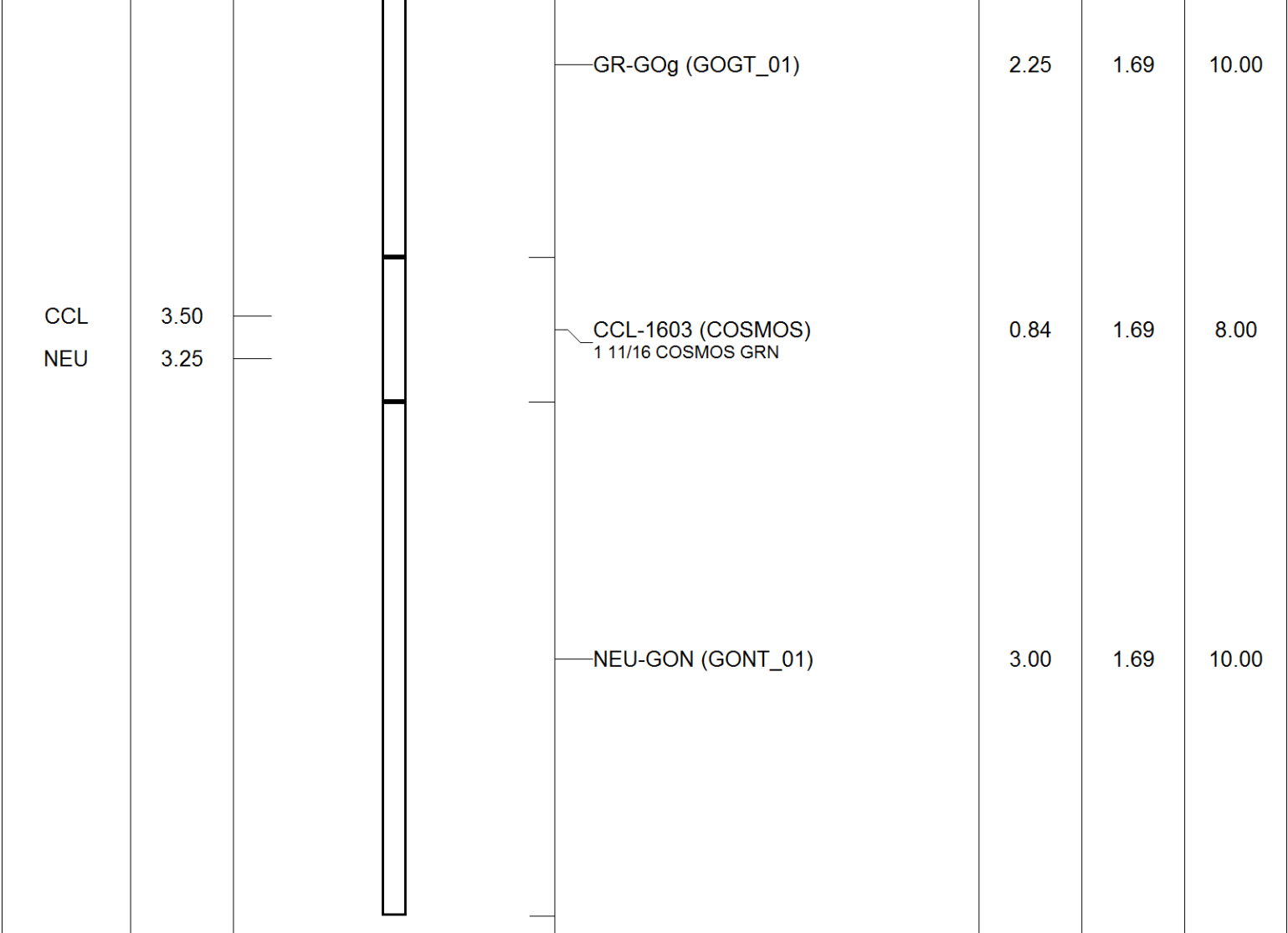
<<< Fold Here >>>

All interpretations are opinions based on inferences from electrical or other measurements and we cannot and do not guarantee the accuracy or correctness of any interpretation, and we shall not, except in the case of gross or willful negligence on our part, be liable or responsible for any loss, costs, damages, or expenses incurred or sustained by anyone resulting from any interpretation made by any of our officers, agents or employees. These interpretations are also subject to our general terms and conditions set out in our current Price Schedule.

Comments

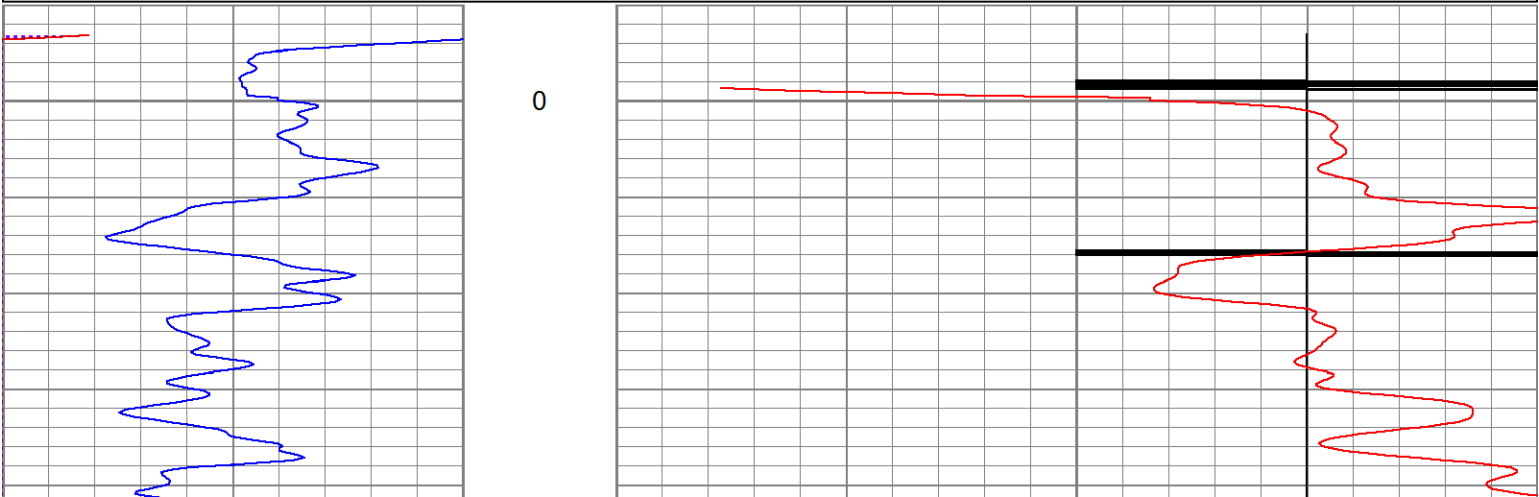
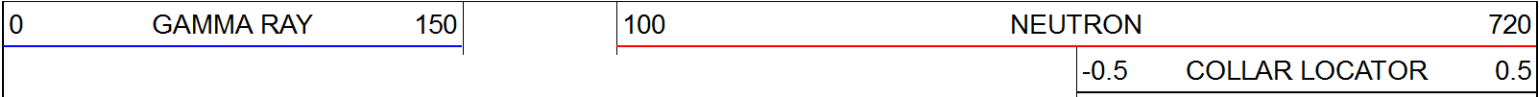
CEMENT TOP WAS LOGGED @144'
 PERFORATED FROM 1506'-1512' 2HPFT WITH A TOTAL OF 12 HOLES ON 10-6-2015
 PERFORATED FROM 1514'-1520' 2HPFT WITH A TOTAL OF 12 HOLES ON 10-6-2015
 PERFORATED FROM 1522'-1526' 2HPFT WITH A TOTAL OF 8 HOLES ON 10-6-2015
 THANK YOU FOR USING FWS, INC. HOMINY, OKLAHOMA. (918) 885 6564

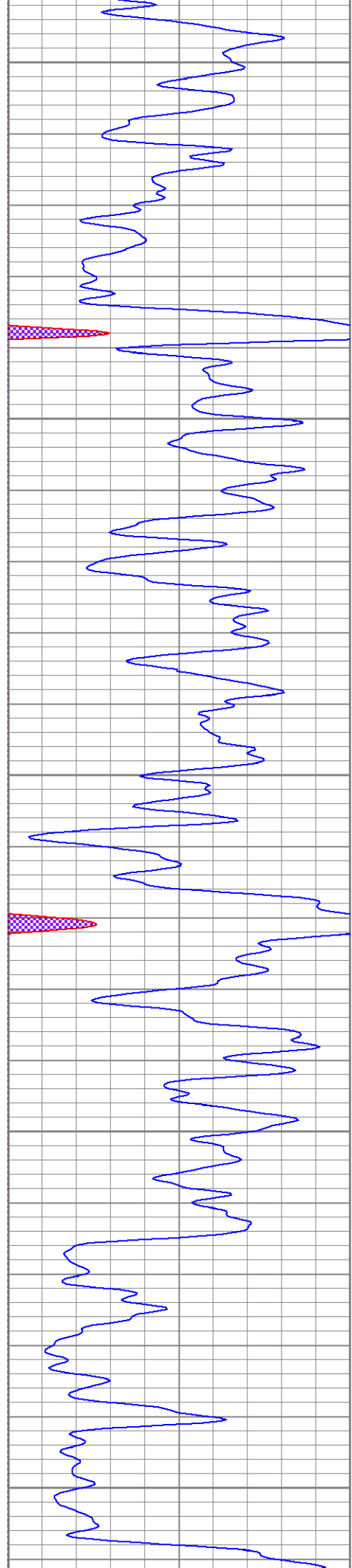
Sensor	Offset (ft)	Schematic	Description	Len (ft)	OD (in)	Wt (lb)
GR	5.59					



Dataset: sm#4513.db: field/fulsumb1-/run2/pass2A
 Total Length: 6.09 ft
 Total Weight: 28.00 lb
 O.D.: 1.69 in

Database File: sm#4513.db
 Dataset Pathname: fulsumb1-/run2/pass2A
 Presentation Format: gr-n-ccl
 Dataset Creation: Tue Oct 06 11:53:08 2015
 Charted by: Depth in Feet scaled 1:240





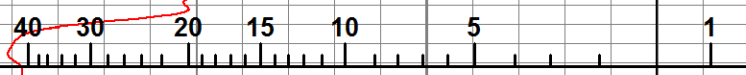
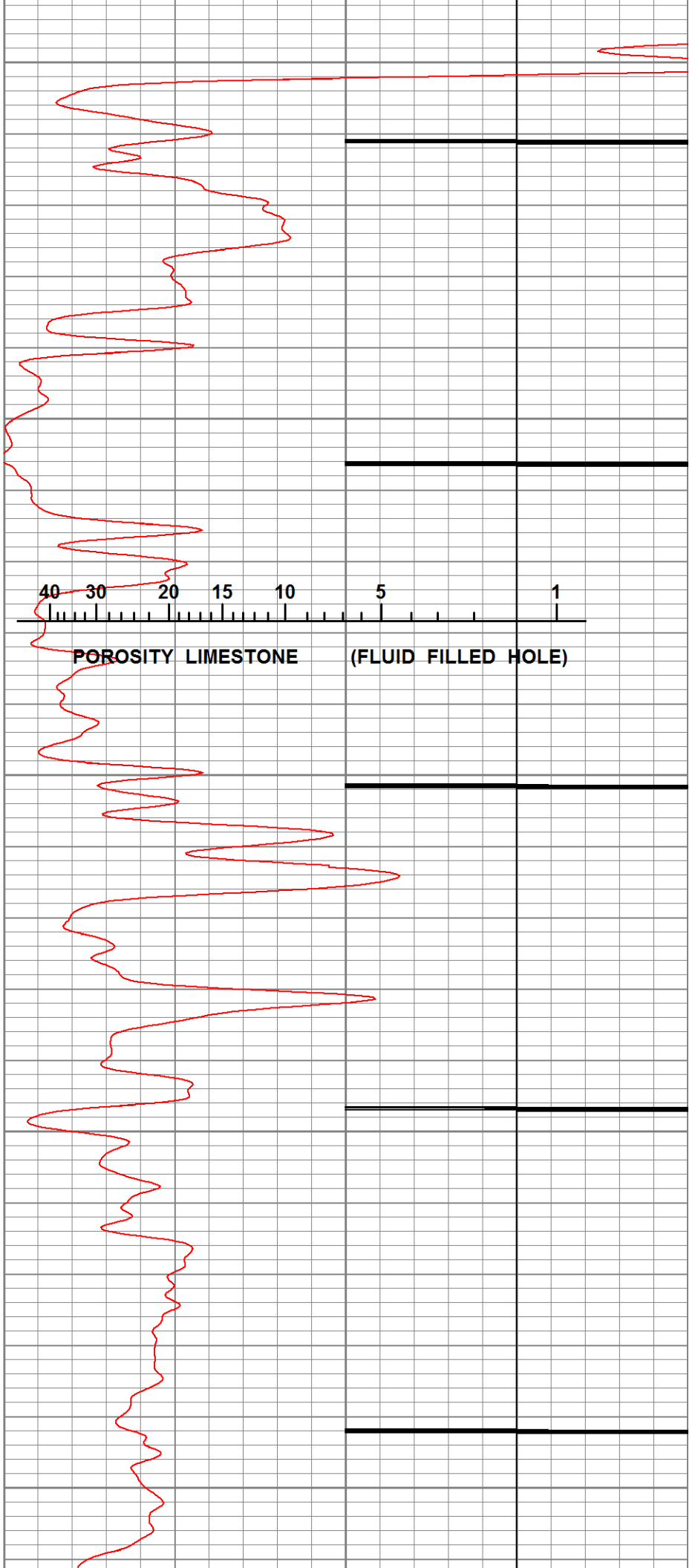
50

100

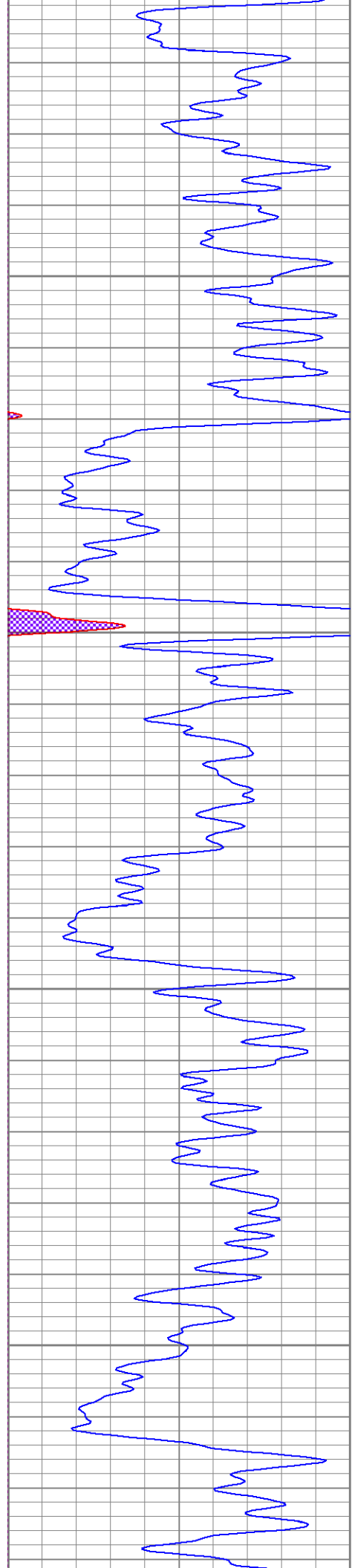
150

200

250



POROSITY LIMESTONE (FLUID FILLED HOLE)

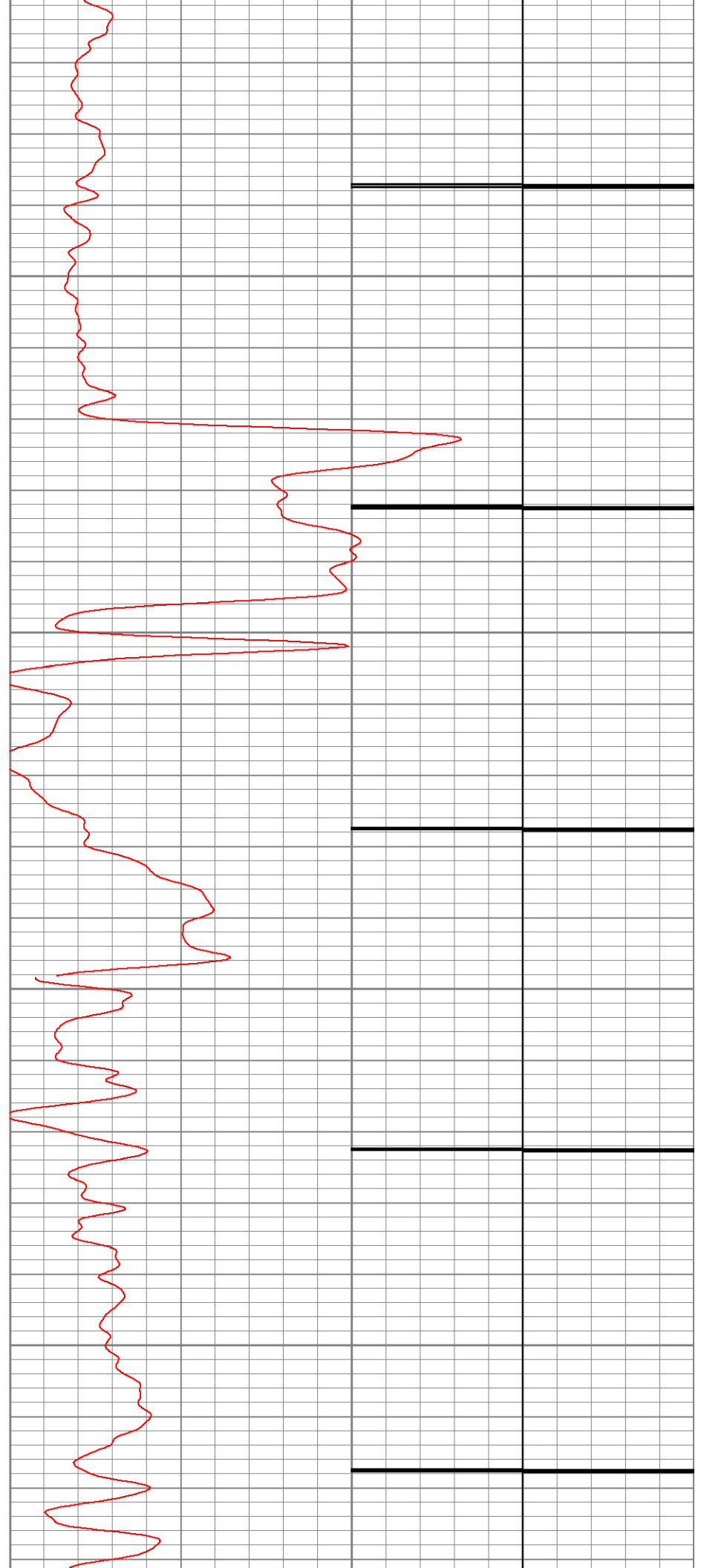


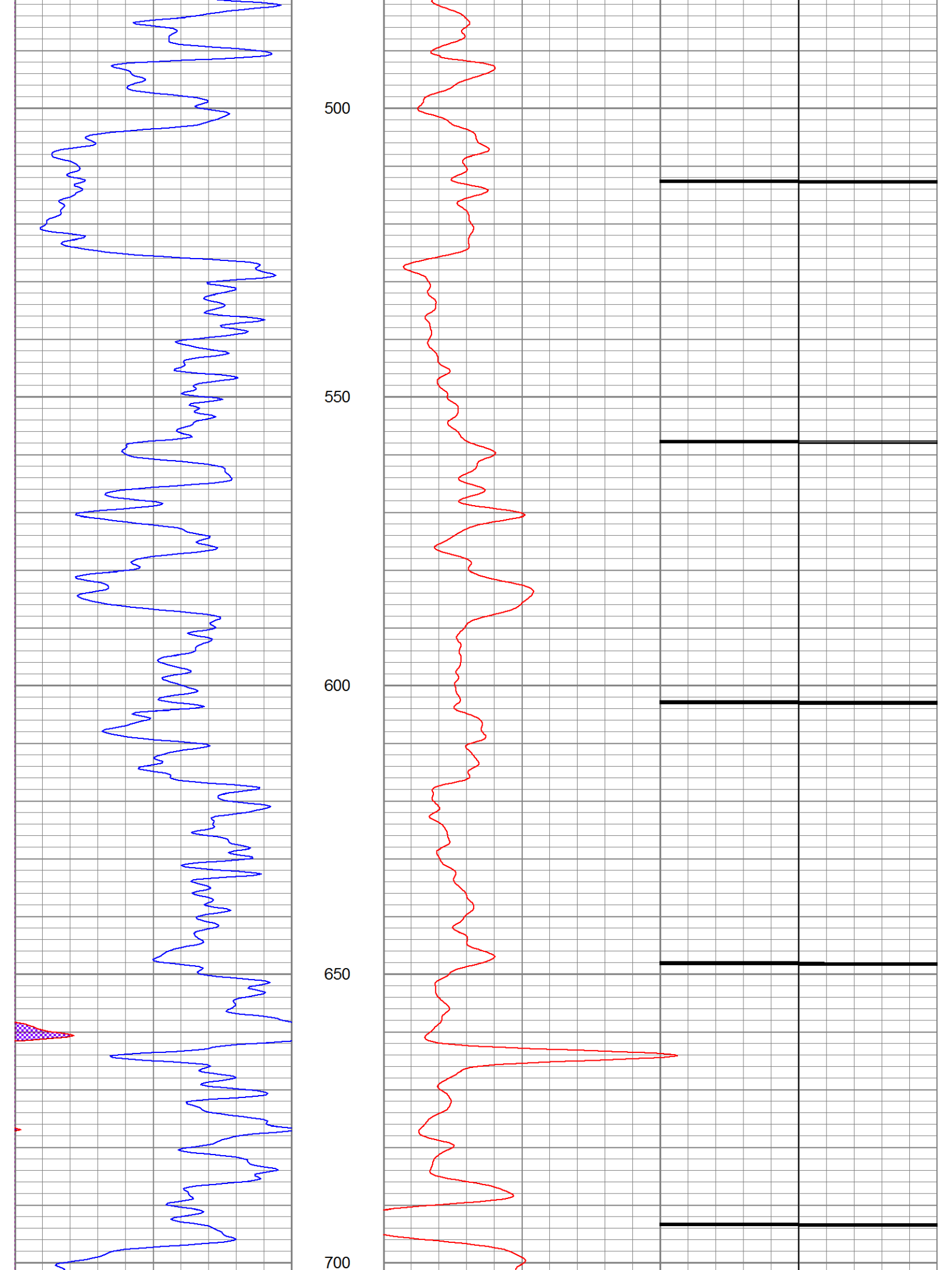
300

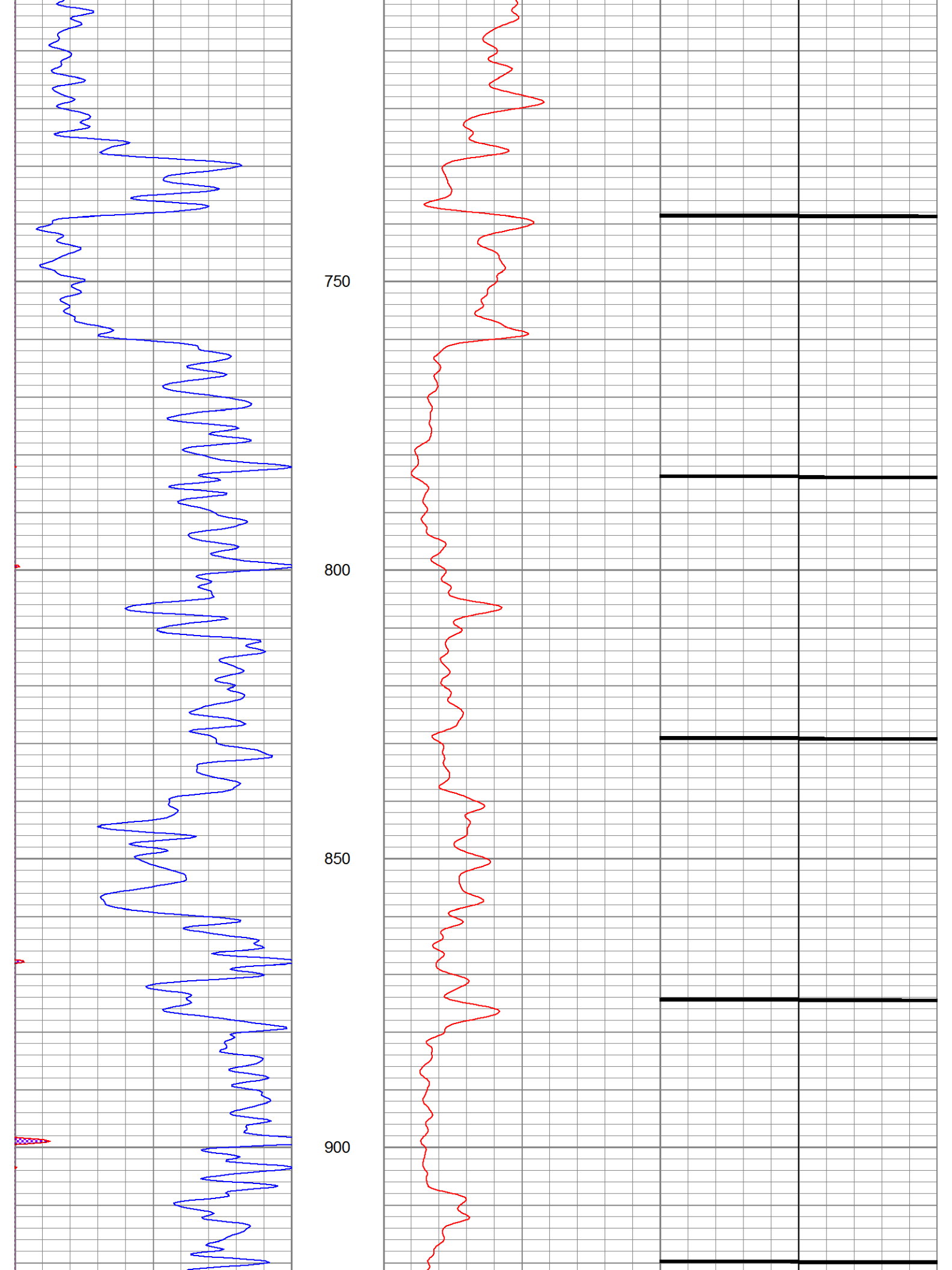
350

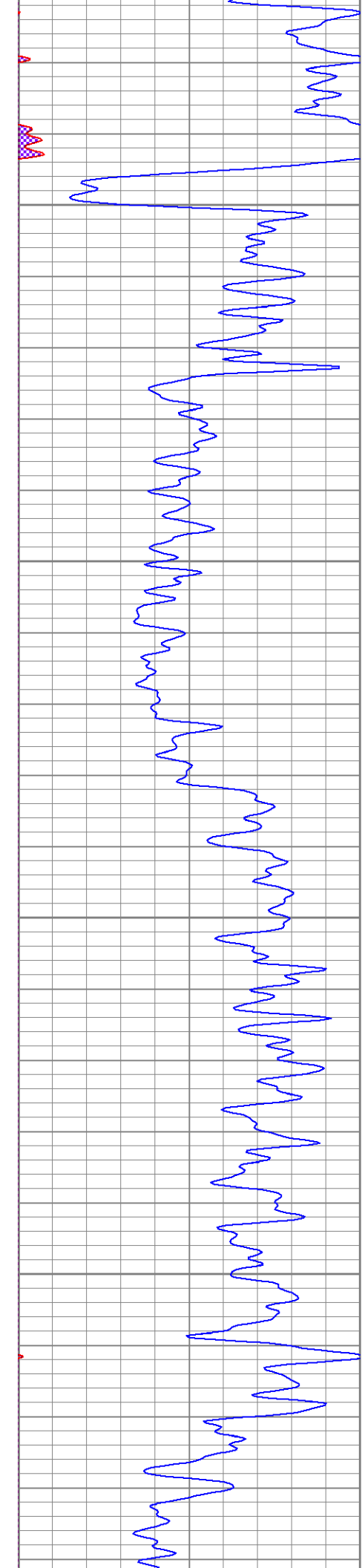
400

450







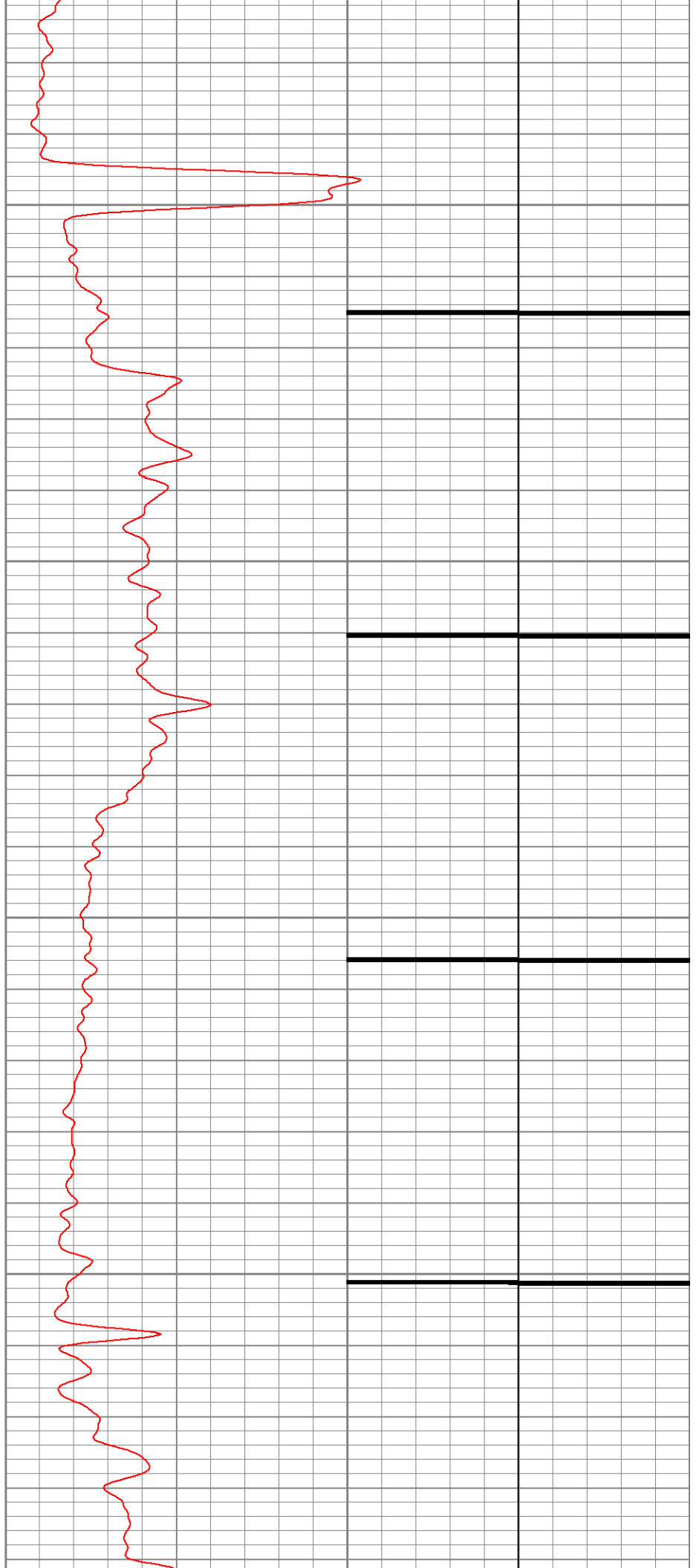


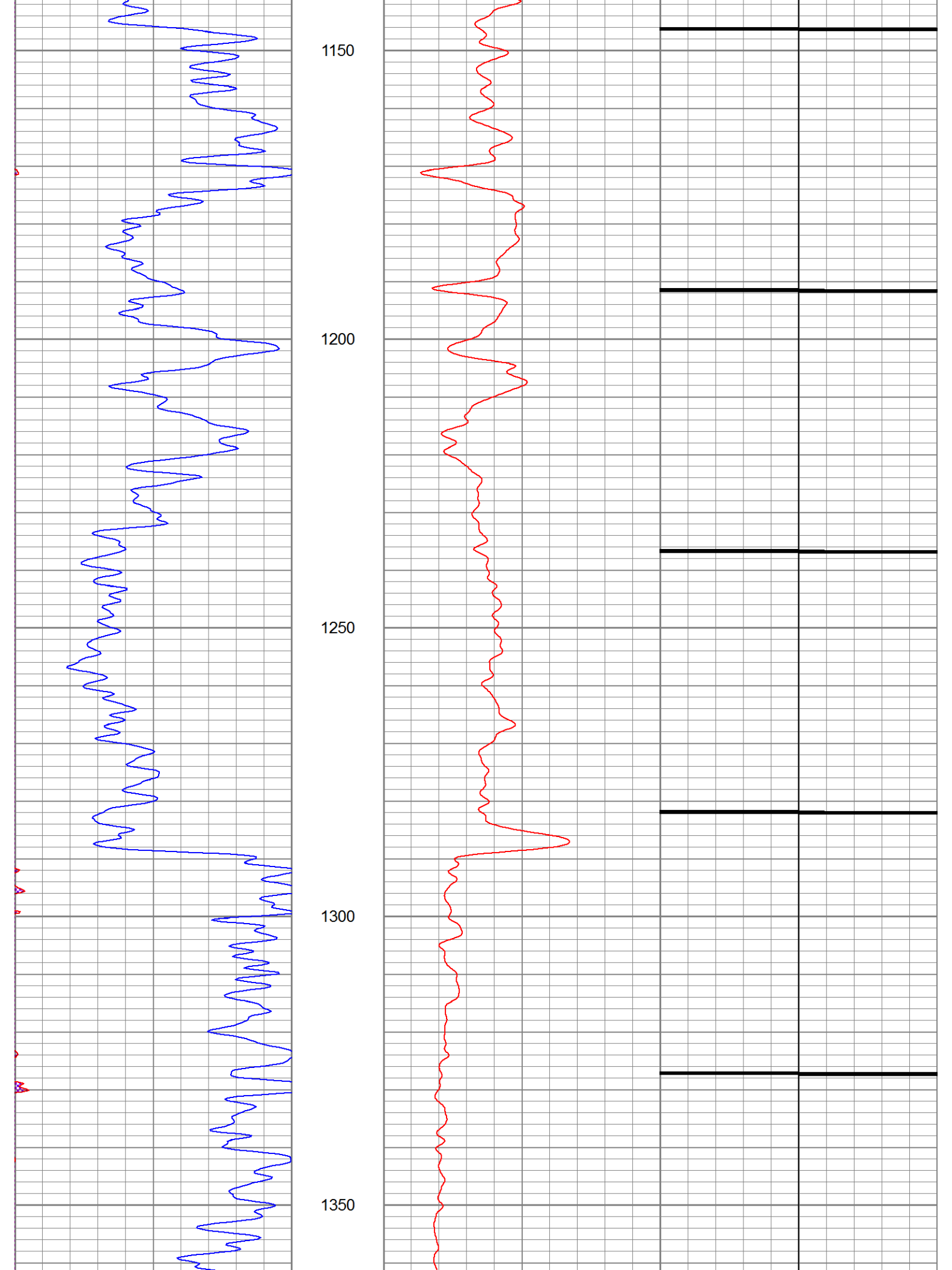
950

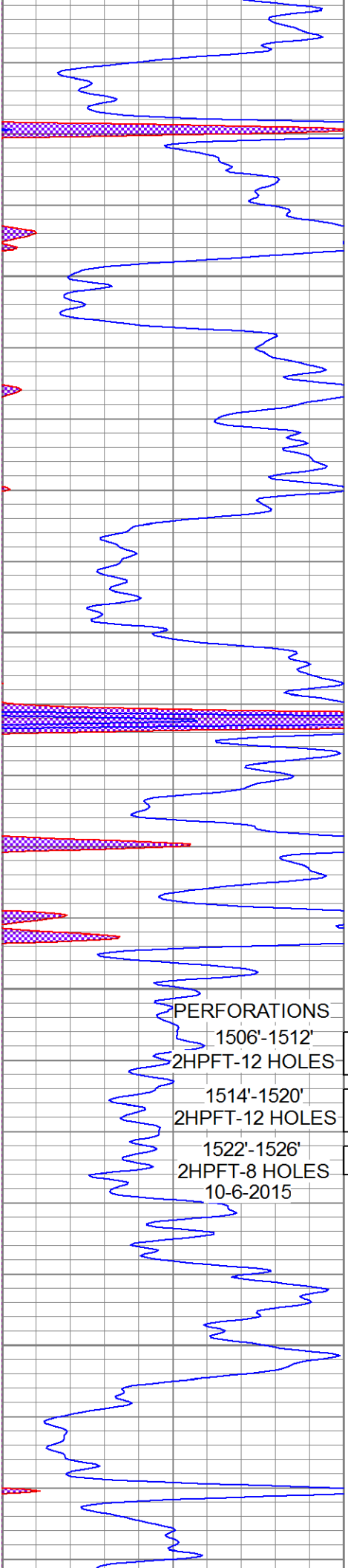
1000

1050

1100





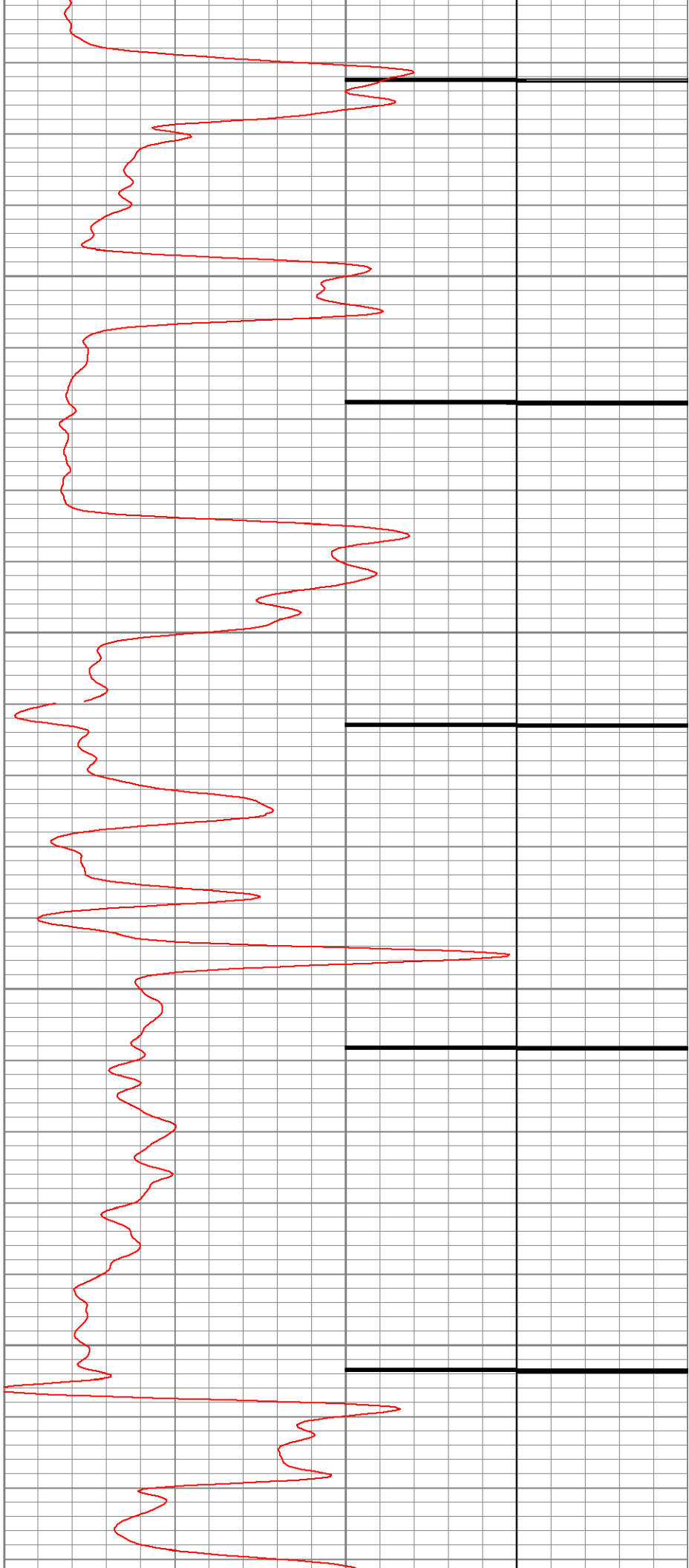


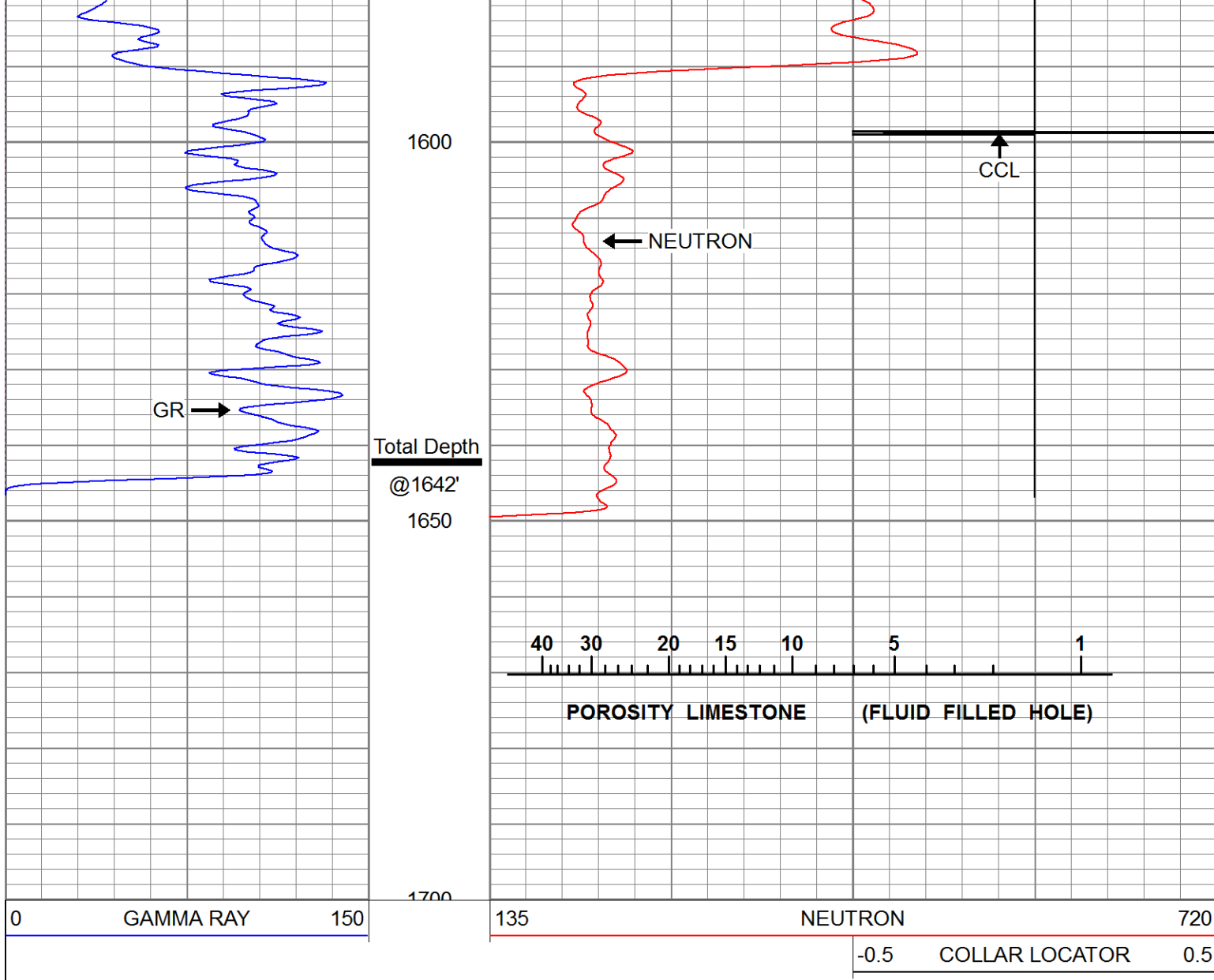
1400

1450

1500

1550





Calibration Report

Database File: sm#4513.db
 Dataset Pathname: fulsumb1-/run2/pass2A
 Dataset Creation: Tue Oct 06 11:53:08 2015

Neutron Calibration Report

Serial Number: GONT_01
 Tool Model: GON
 Performed: Wed Mar 20 09:25:00 2013

Calibrator Values: 0 1
 Calibrator Readings: 0 1 cps

Sensitivity: 1 /cps

Gamma Ray Calibration Report

Serial Number: GOGT_01
 Tool Model: GOg
 Performed: Wed Sep 16 09:35:21 2015

Calibrator Value: 340.0

Background Reading: 0.0 cps
 Calibrator Reading: 100.0 cps

Sensitivity:

5.2000

/cps