

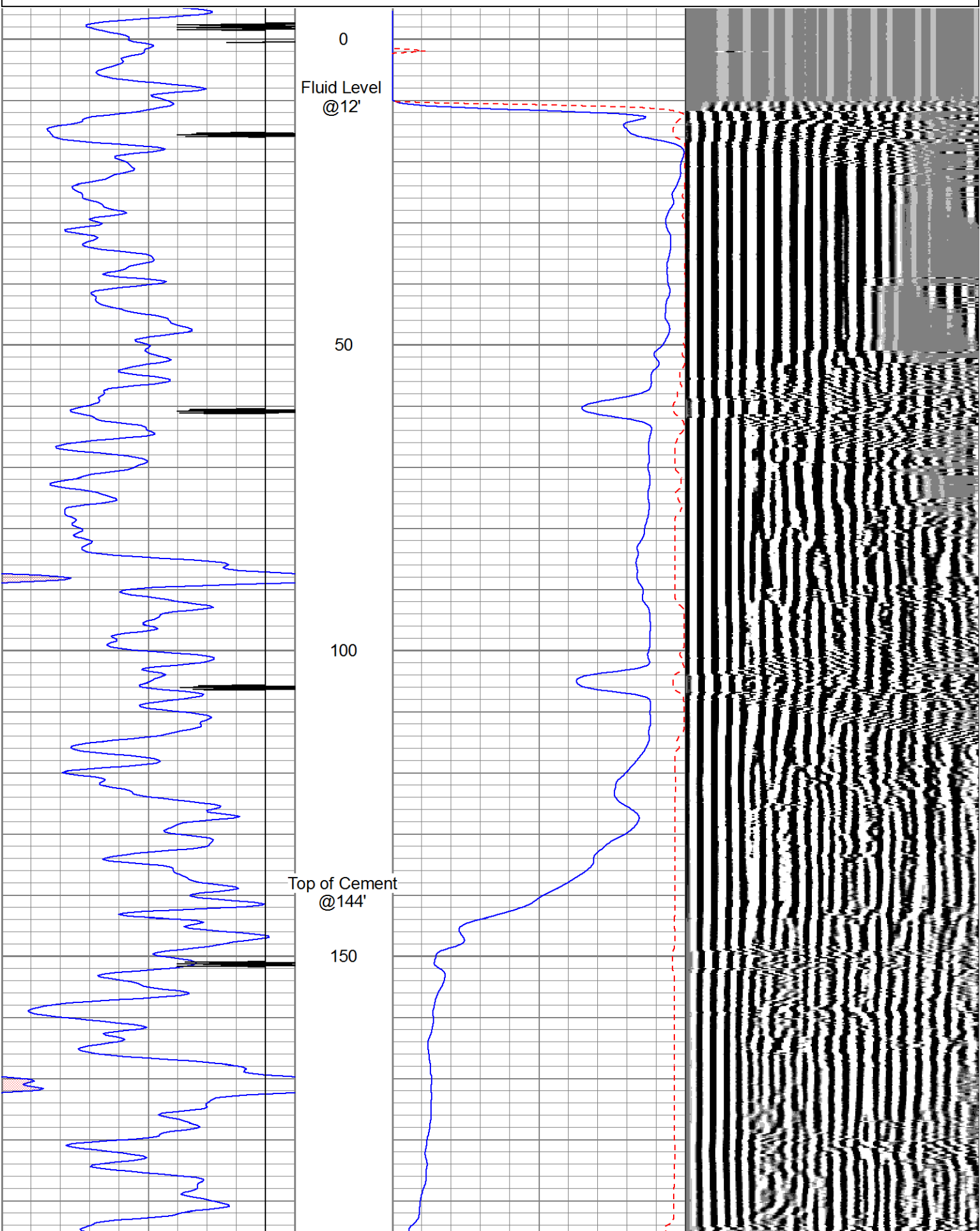
Dataset: sm#4513.db: field/fulsumb1-/run1/pass2.1
 Total Length: 18.63 ft
 Total Weight: 130.00 lb
 O.D. 3.25 in

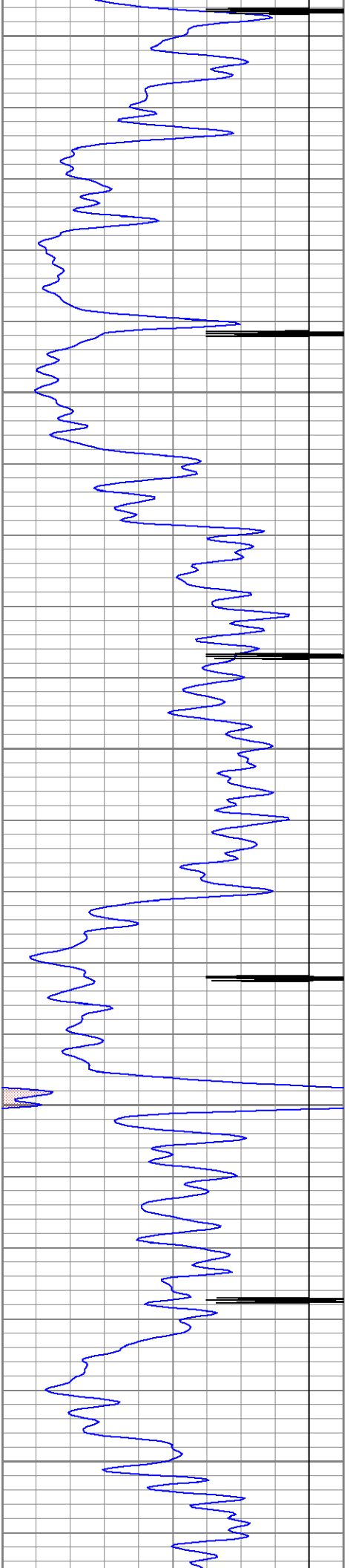
Database File: sm#4513.db
 Dataset Pathname: fulsumb1-/run1/pass2.1
 Presentation Format: cb_sr
 Dataset Creation: Tue Oct 06 10:41:02 2015 by Calc 7.0 B1
 Charted by: Depth in Feet scaled 1:240

0	GAMMA RAY	150
-9	COLLAR LOCATOR	1

0	AMPLITUDE (mV)	100
1200	TRAVEL TIME (usec)	200

200	VDL	1200
-----	-----	------





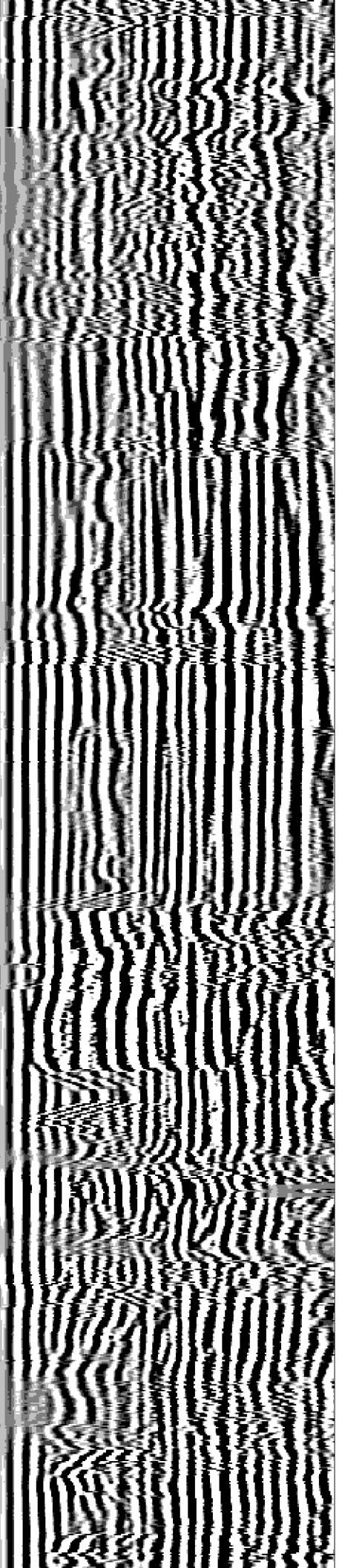
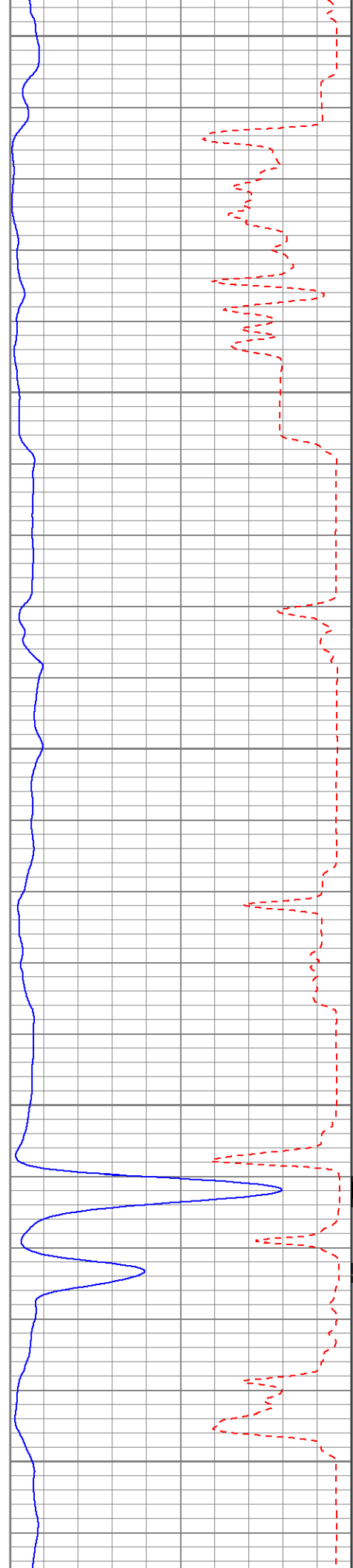
200

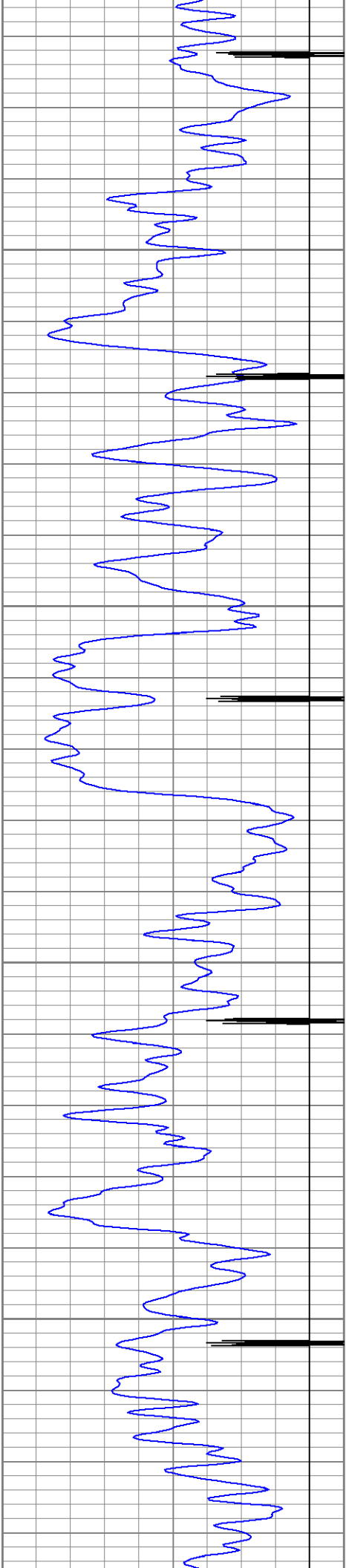
250

300

350

400



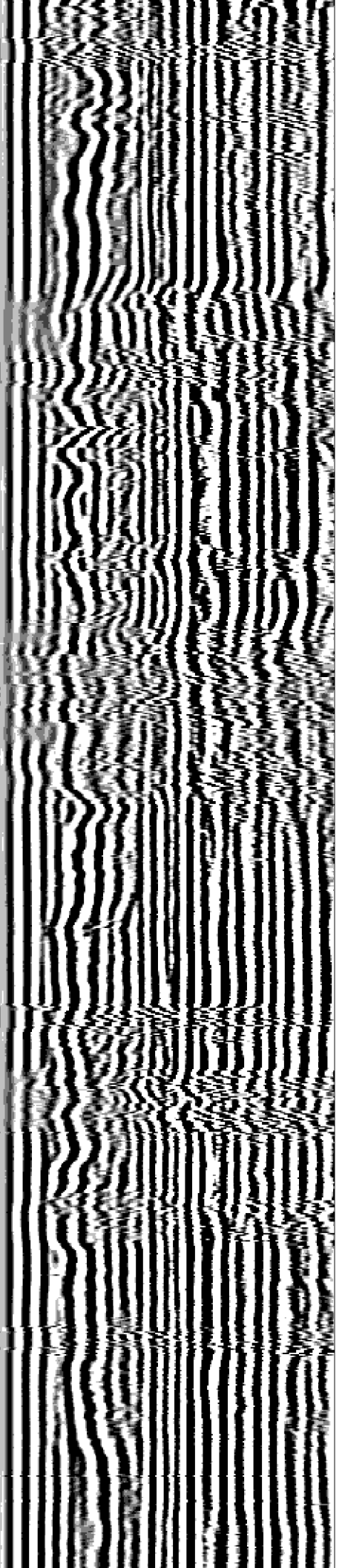
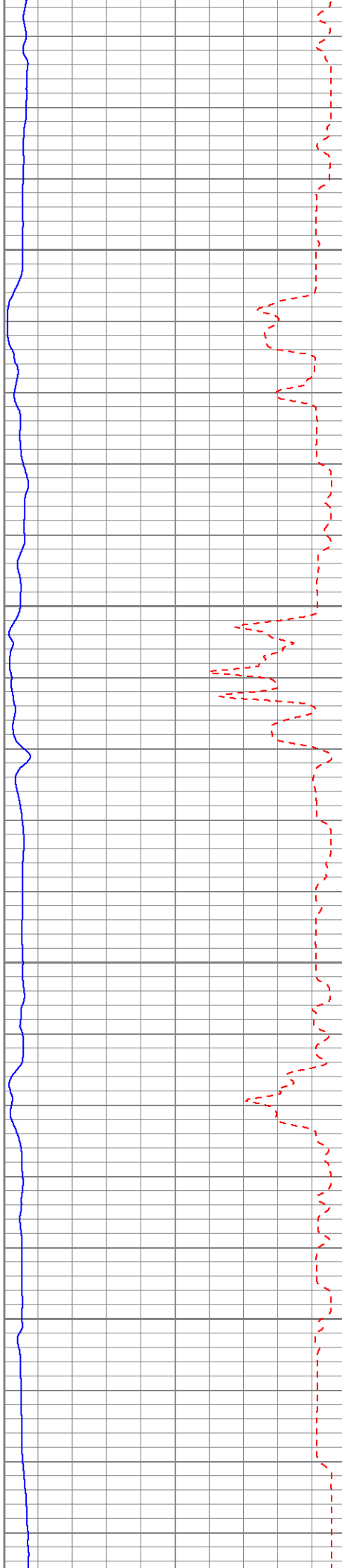


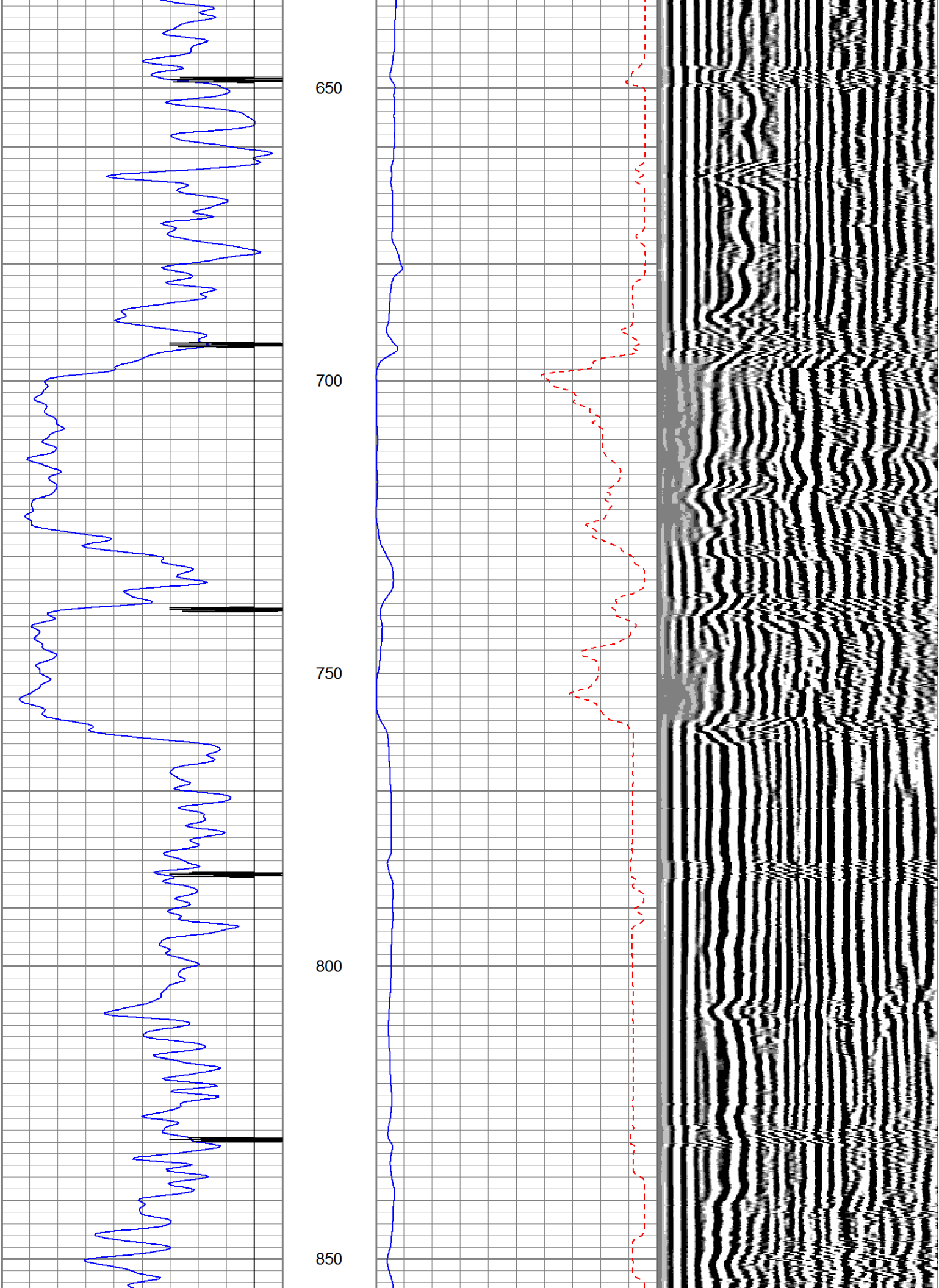
450

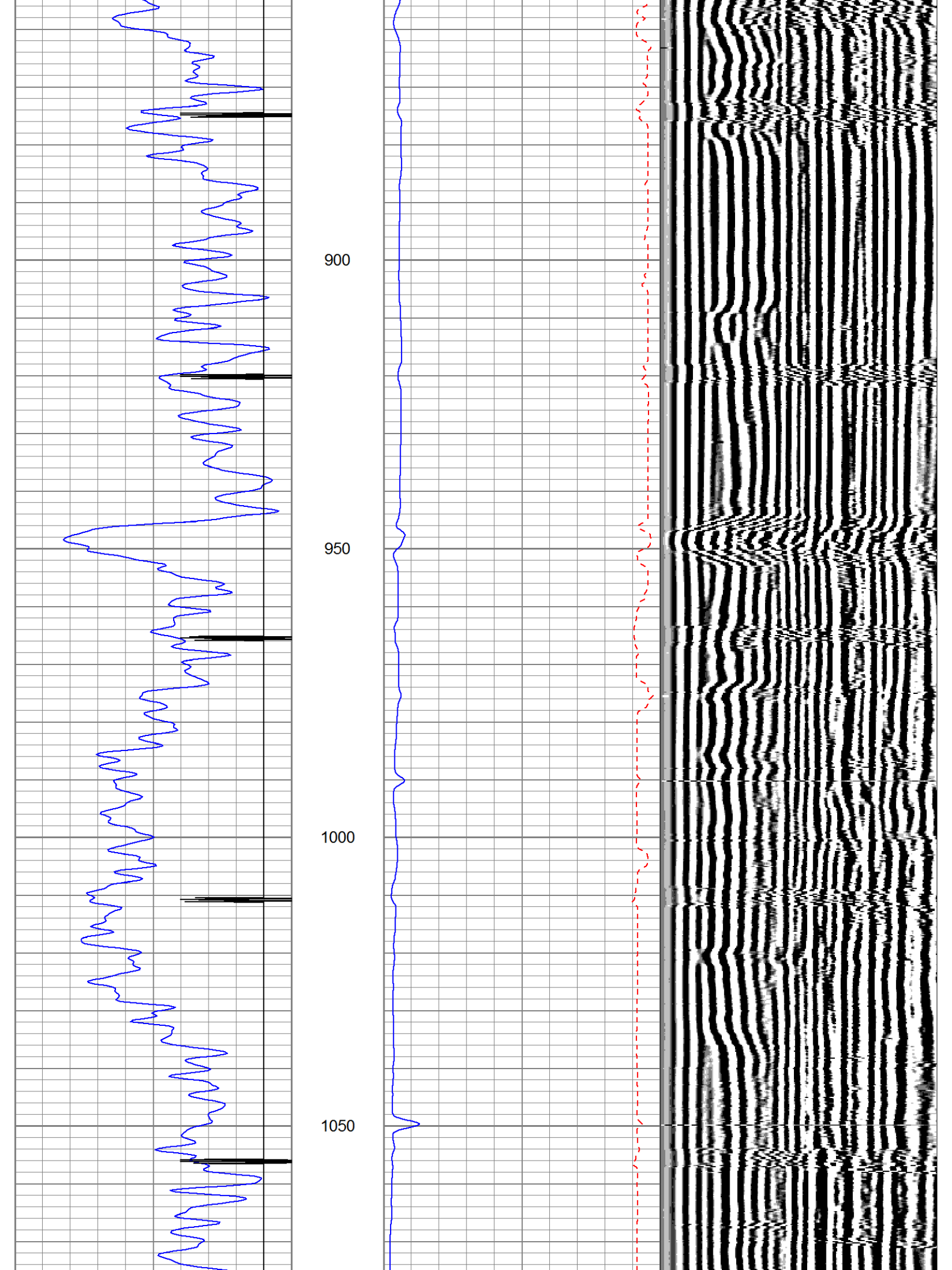
500

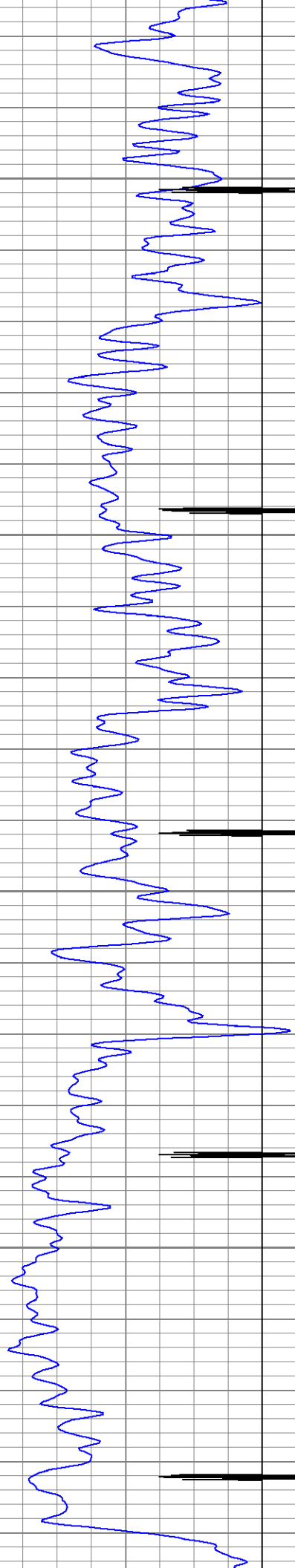
550

600







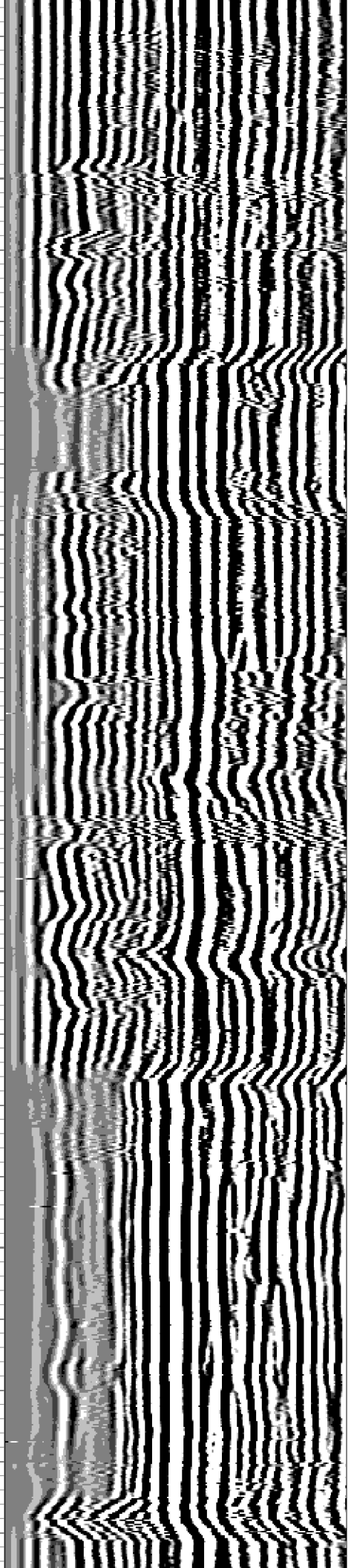
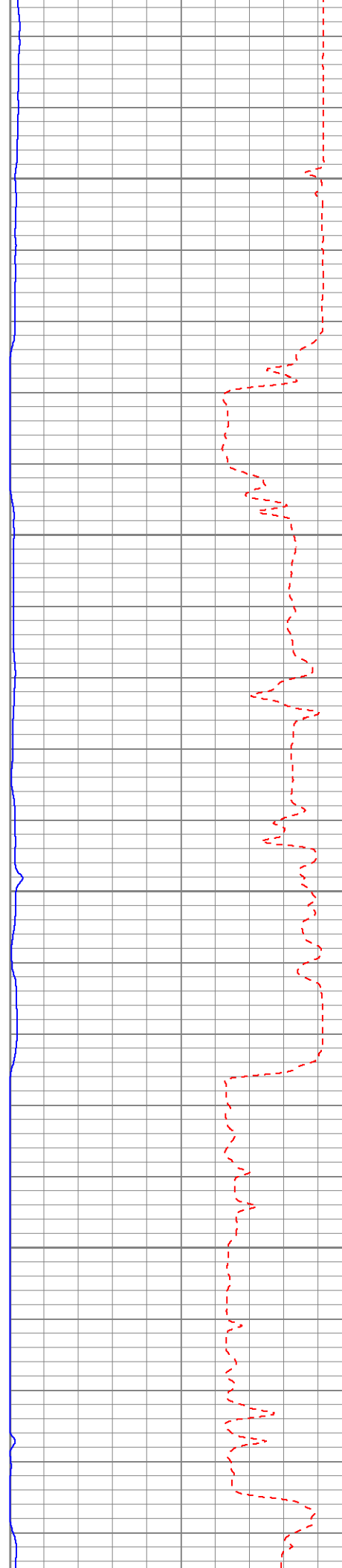


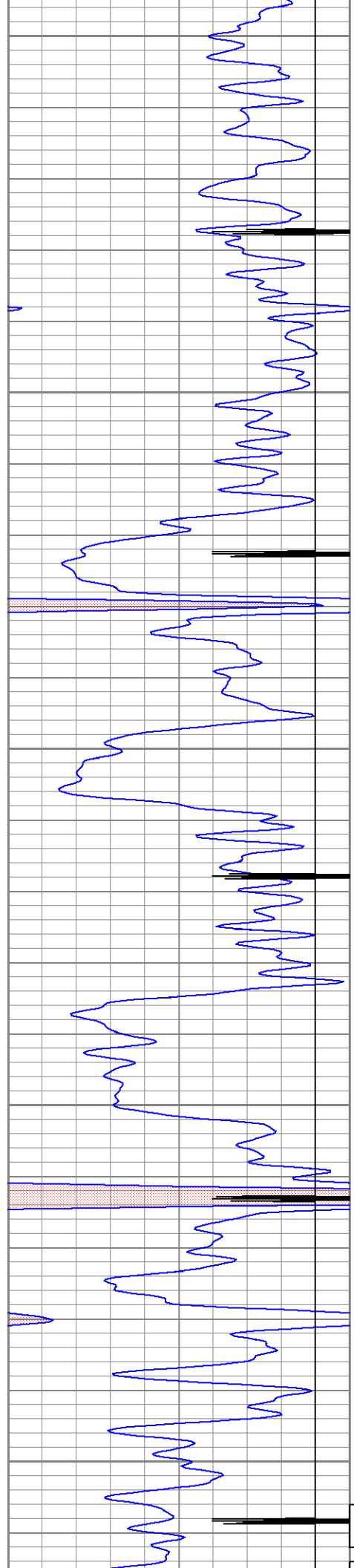
1100

1150

1200

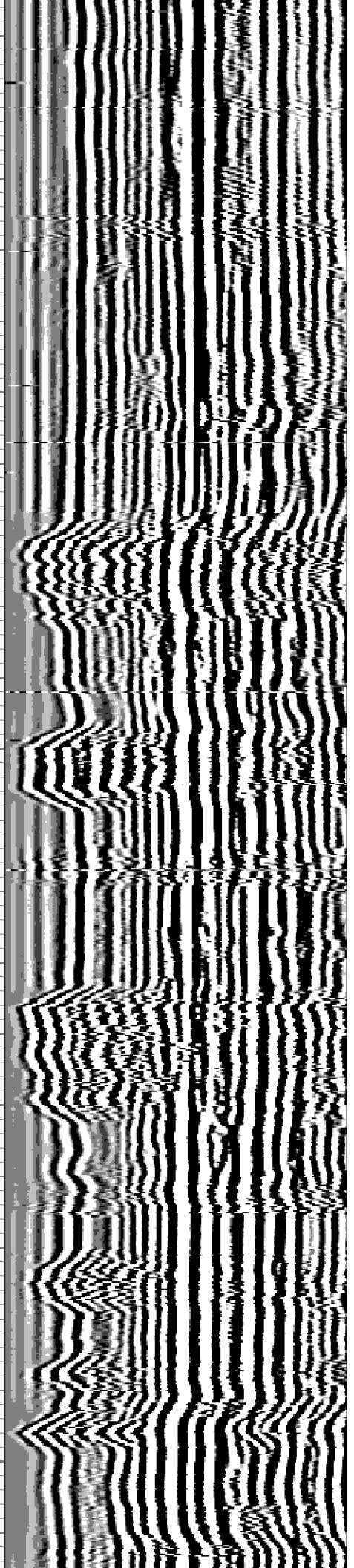
1250



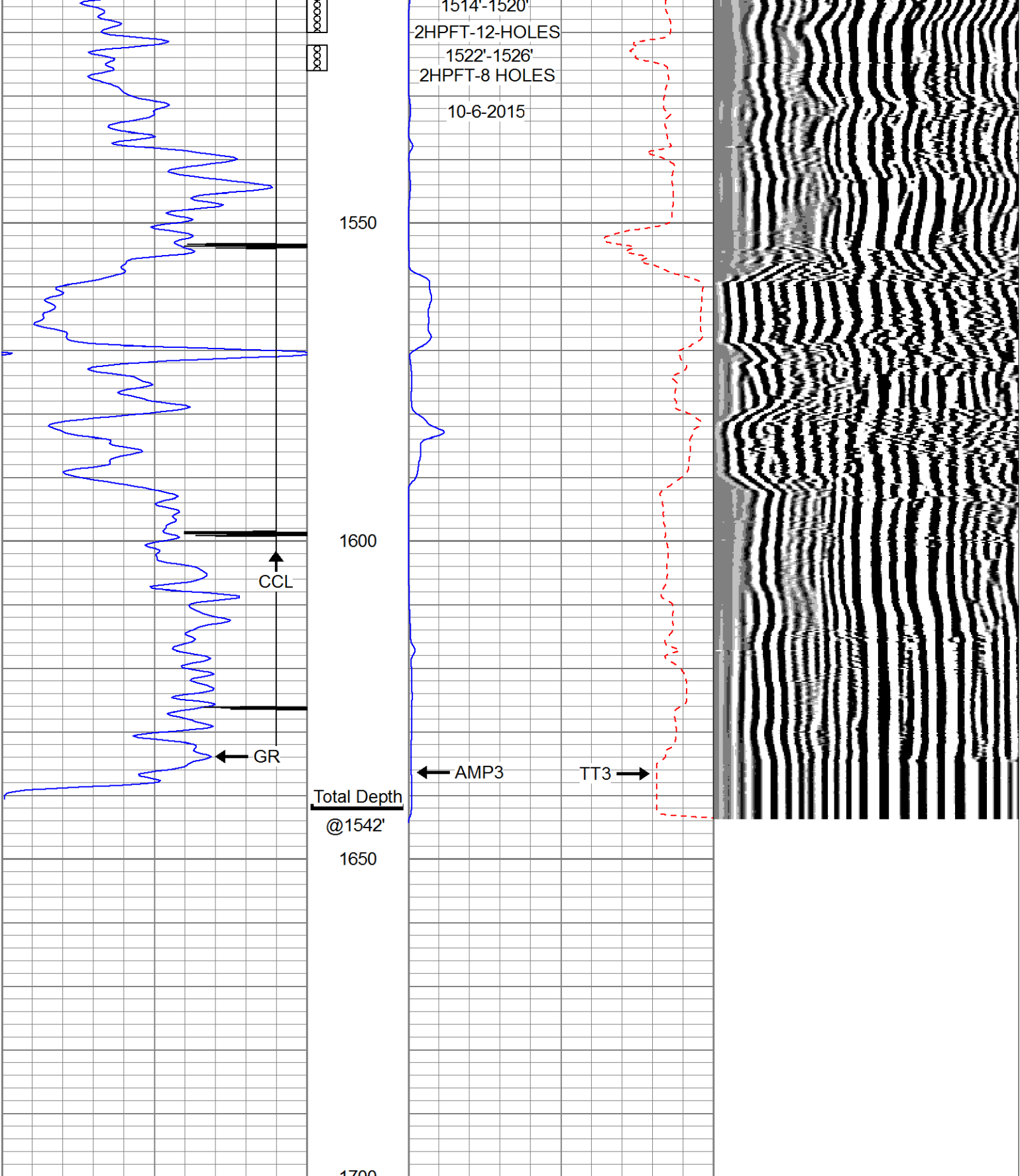


1300
1350
1400
1450
1500

PERFORATIONS
1506'-1512'
2HPFT-12-HOLES



1514'-1520'
 2HPFT-12-HOLES
 1522'-1526'
 2HPFT-8 HOLES
 10-6-2015



0	GAMMA RAY	150	0	AMPLITUDE (mV)	100	200	VDL	1200
-9	COLLAR LOCATOR	1	1200	TRAVEL TIME (usec)	200			

Calibration Report

Database File: sm#4513.db
 Dataset Pathname: fulsumb1-/run1/pass2.1
 Dataset Creation: Tue Oct 06 10:41:02 2015 by Calc 7 0 B1

Cement Bond Log Calibration Report

Serial Number: SIE3_1/4
Tool Model: SIE31/4
Performed: Tue Oct 06 10:36:43 2015

Depth: 2014.67 ft
Casing Diameter: 5.5 in

3' Spacing

Signal Zero: 1 mV
Calibrated Amplitude: 71.921 mV
Reading at Signal Zero: 0.0272461 V
Reading in Free Pipe: 1.41328 V

Gain: 52
Offset: -0.394136

Gamma Ray Calibration Report

Serial Number: SIE3_001
Tool Model: SIE3125
Performed: Thu Nov 20 09:25:02 2014

Calibrator Value: 1.0

Background Reading: 3.8 cps
Calibrator Reading: 1.0 cps

Sensitivity: 4.4000 /cps