



**COMPLETION
& PRODUCTION
SERVICES CO.**

**COMPENSATED
DENSITY/NEUTRON
LOG**

Company ETERNITY EXPLORATION, LLC.
Well WERTH FARMS #1-12
Field CUSTER
County SHERIDAN
State KANSAS

Company ETERNITY EXPLORATION, LLC.
Well WERTH FARMS #1-12
Field CUSTER
County SHERIDAN State KANSAS

Location: API # : 15-179-21367-0000
330' FSL & 1650' FWL
SW - SE - SW
SEC 12 TWP 10S RGE 26W
Permanent Datum GROUND LEVEL Elevation 2589
Log Measured From KELLY BUSHING 5' A.G.L.
Drilling Measured From KELLY BUSHING
Other Services
DIL/MEL
Elevation
K.B. 2594
D.F. 2592
G.L. 2589

Date	7/28/14		
Run Number	ONE		
Depth Driller	4120		
Depth Logger	4120		
Bottom Logged Interval	4096		
Top Log Interval	3500		
Casing Driller	8 5/8" @ 219		
Casing Logger	216		
Bit Size	7 7/8"		
Type Fluid in Hole	CHEMICAL MUD	CHLORIDES 3000 PPM	
Density / Viscosity	9.368		
pH / Fluid Loss	9.5/8.8		
Source of Sample	FLOWLINE		
Rm @ Meas. Temp	.70 @ 90F		
Rmt @ Meas. Temp	.52 @ 90F		
Rmc @ Meas. Temp	.84 @ 90F		
Source of Rmf / Rmc	MEASUREMENT		
Rm @ BHT	.53 @ 117F		
Time Circulation Stopped	2 HOURS		
Time Logger on Bottom			
Maximum Recorded Temperature	117F		
Equipment Number	4010		
Location	HAYS, KANSAS		
Recorded By	JASON CAPPELLUCCI		
Witnessed By	SCOTT ALBERG		

<<< Fold Here >>>

All interpretations are opinions based on inferences from electrical or other measurements and we cannot and do not guarantee the accuracy or correctness of any interpretation, and we shall not, except in the case of gross or willful negligence on our part, be liable or responsible for any loss, costs, damages, or expenses incurred or sustained by anyone resulting from any interpretation made by any of our officers, agents or employees. These interpretations are also subject to our general terms and conditions set out in our current Price Schedule.

Comments

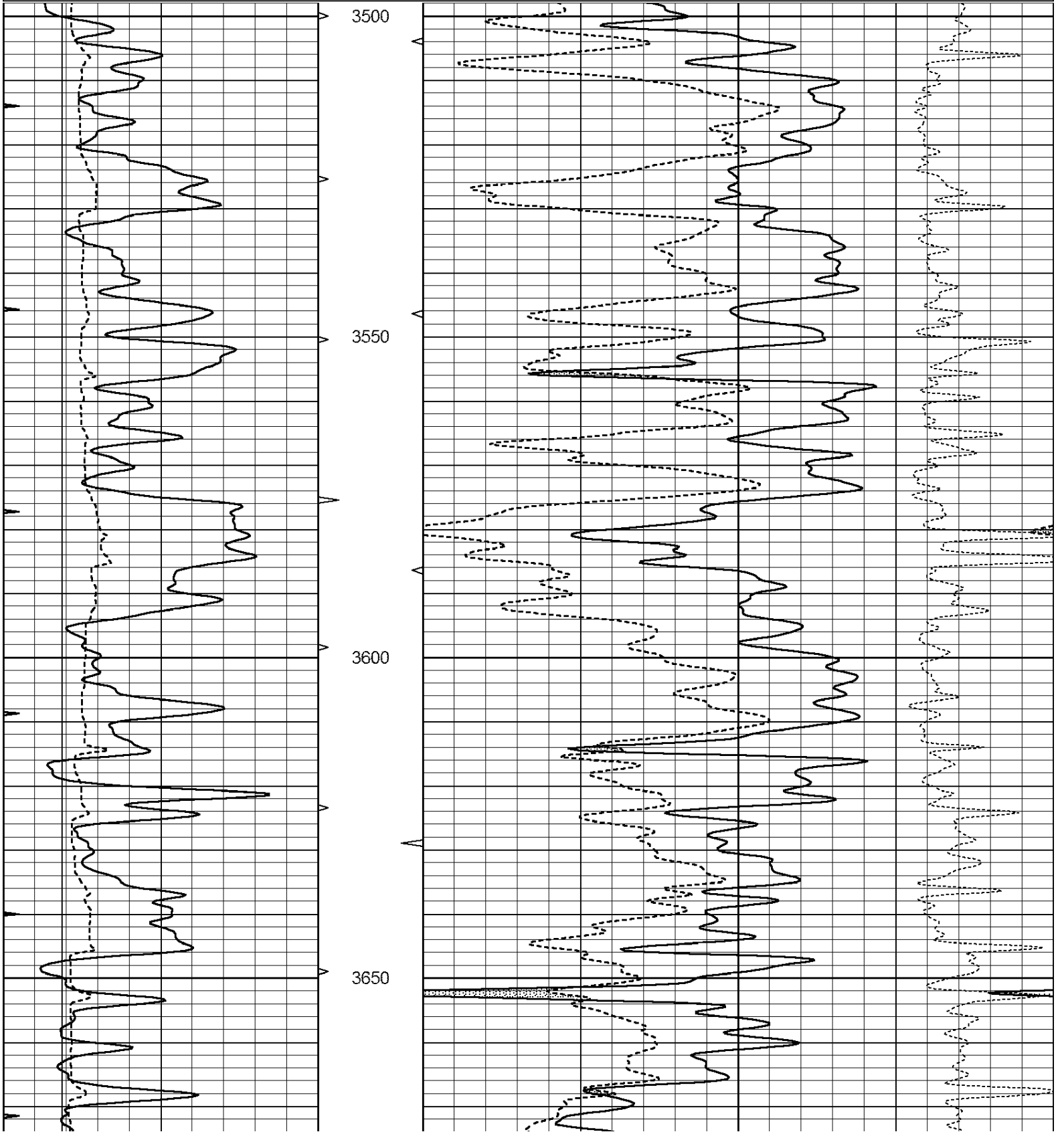
THANK YOU FOR USING NABORS, HAYS, KS. (785) 628-6395
DIRECTIONS:
ST. PETER, KS. - ON RD. E GO 6 1/2 WEST - NORTH INTO

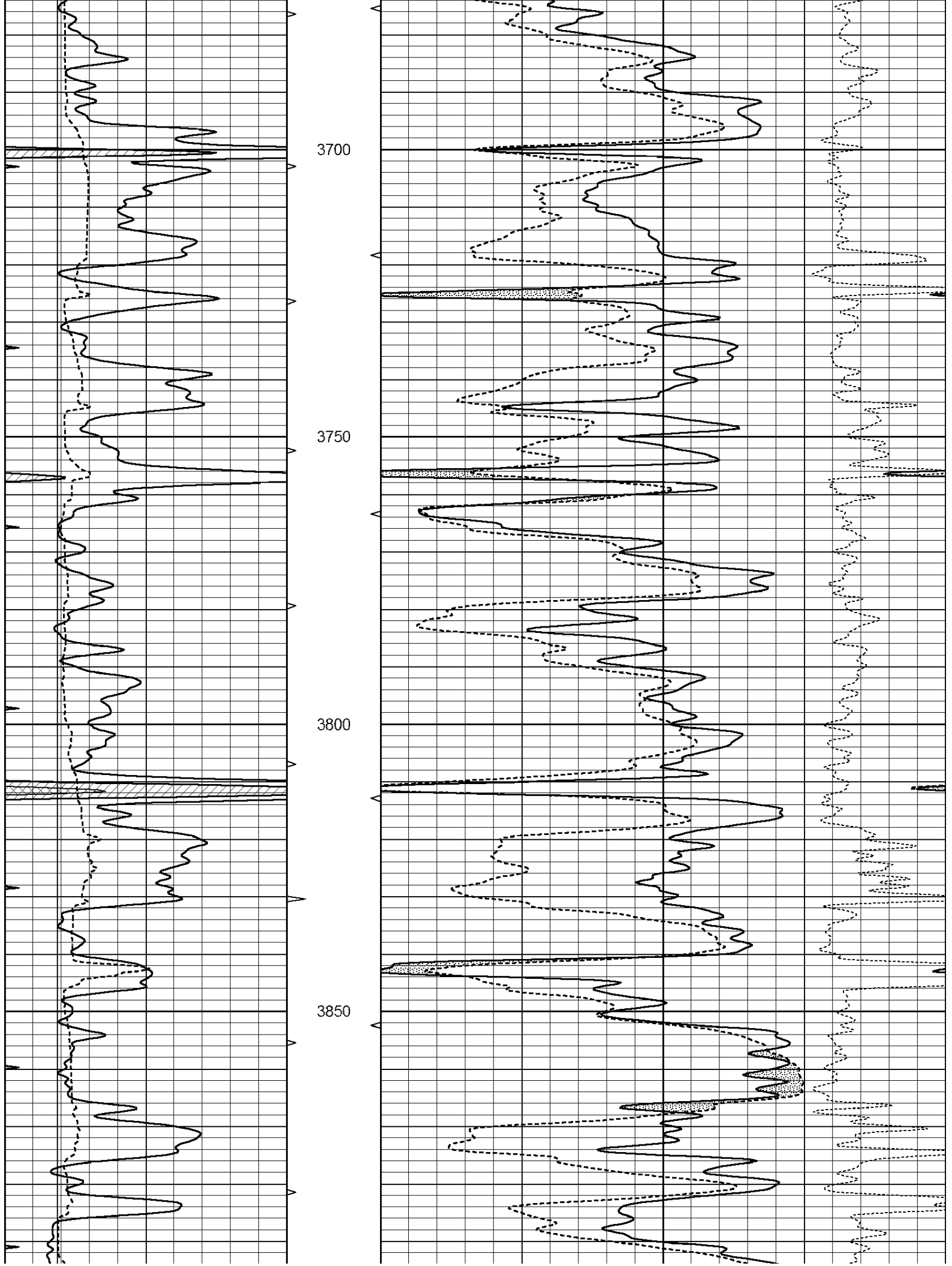


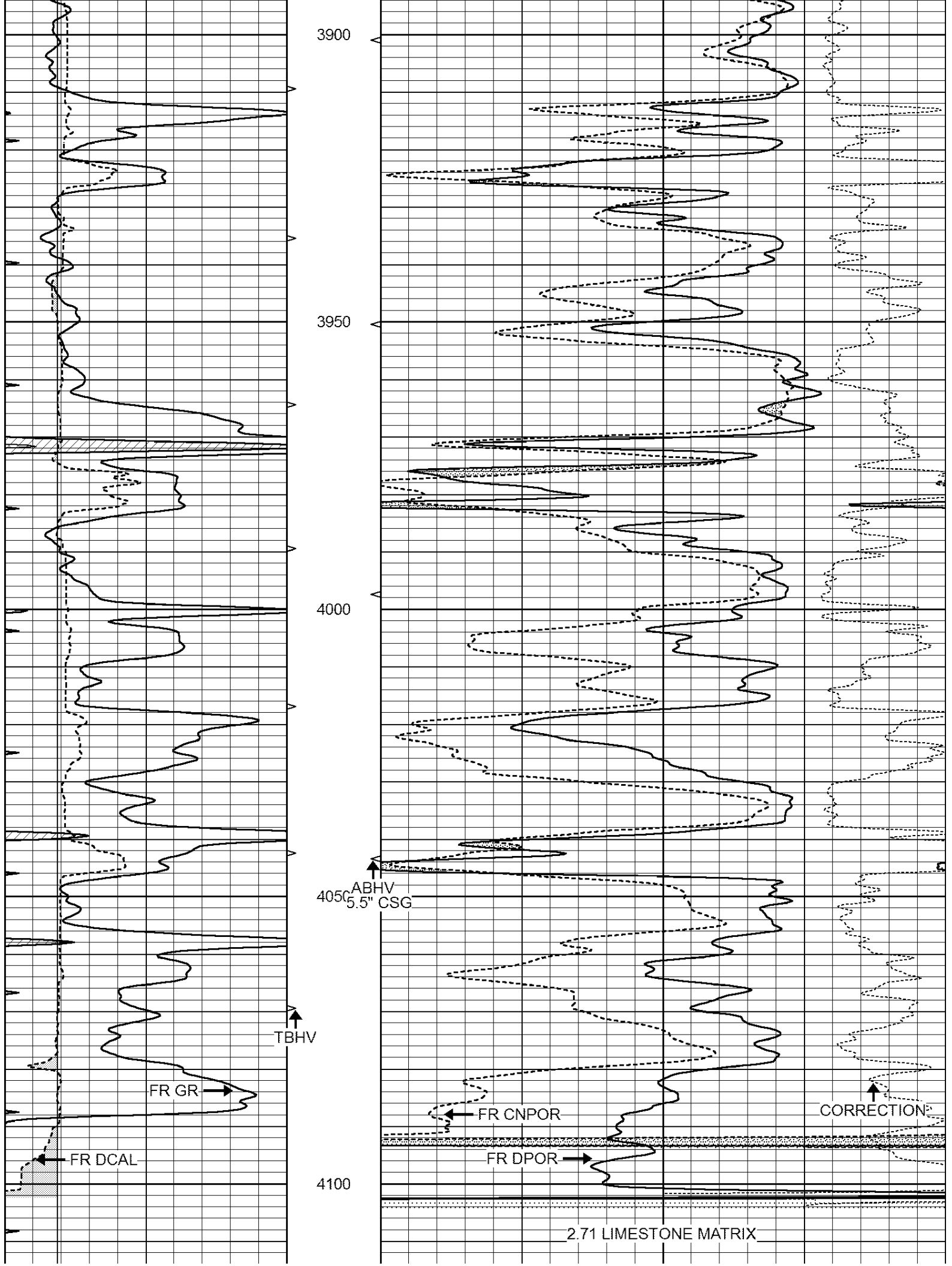
MAIN SECTION

Database File: 24068ddn.db
 Dataset Pathname: pass3.1
 Presentation Format: den_neu
 Dataset Creation: Tue Jul 29 00:03:08 2014 by Calc Open-Cased 090629
 Charted by: Depth in Feet scaled 1:240

0	GAMMA RAY (GAPI)	150	ABHV	30	COMPENSATED DENSITY (pu)	-10
6	CALIPER (in)	16	10 (ft3)	0 30	COMPENSATED NEUTRON (pu)	-10
0	MINMK	20	TBHV		-0.25 CORRECTION (g/cc)	0.25
			0 (ft3)	10		







LTD 4120

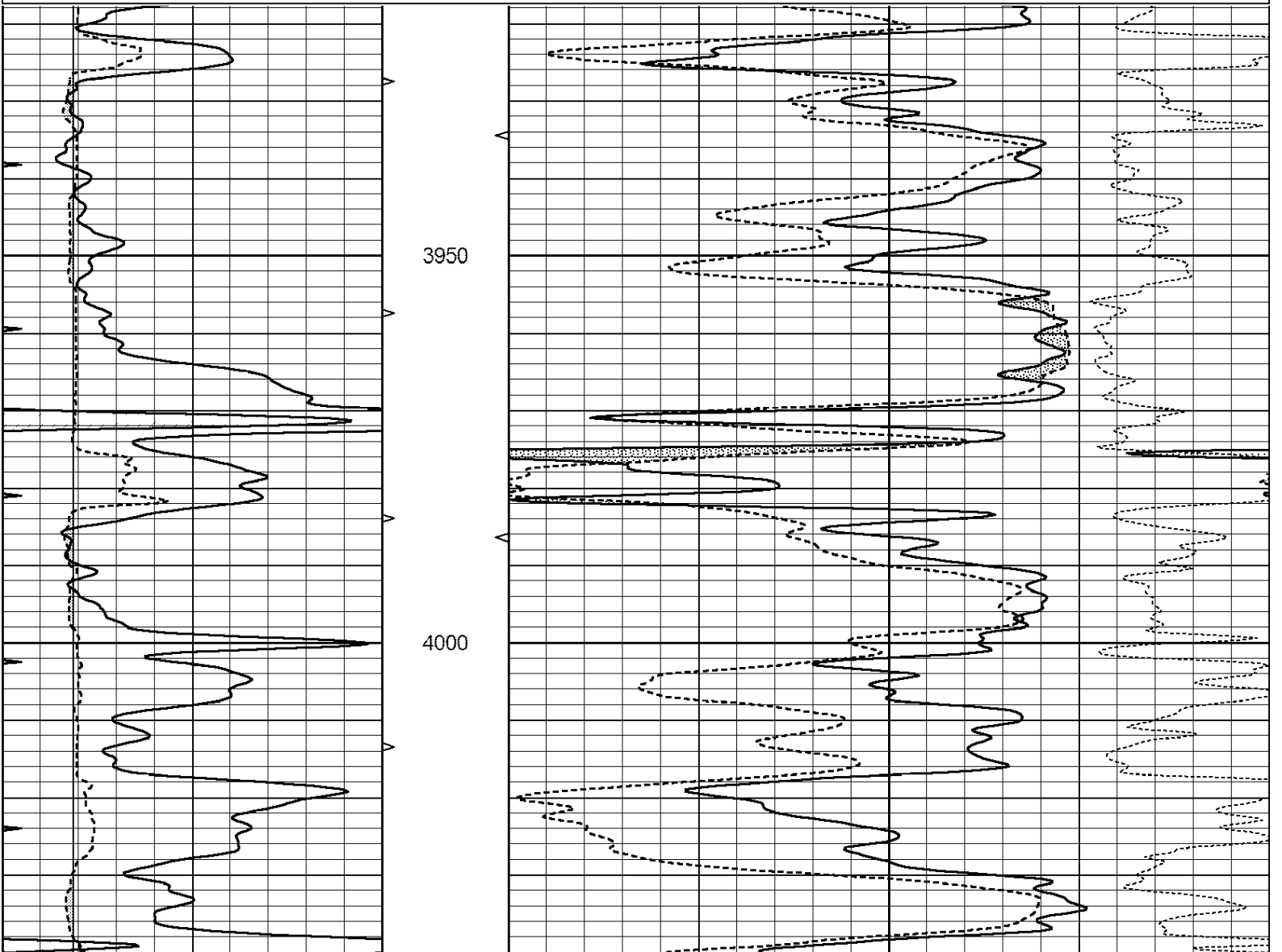
0	GAMMA RAY (GAPI)	150	ABHV	30	COMPENSATED DENSITY (pu)	-10
6	CALIPER (in)	16	10 (ft3) 0	30	COMPENSATED NEUTRON (pu)	-10
0	MINMK	20	TBHV		-0.25 CORRECTION (g/cc)	0.25
			0 (ft3) 10			

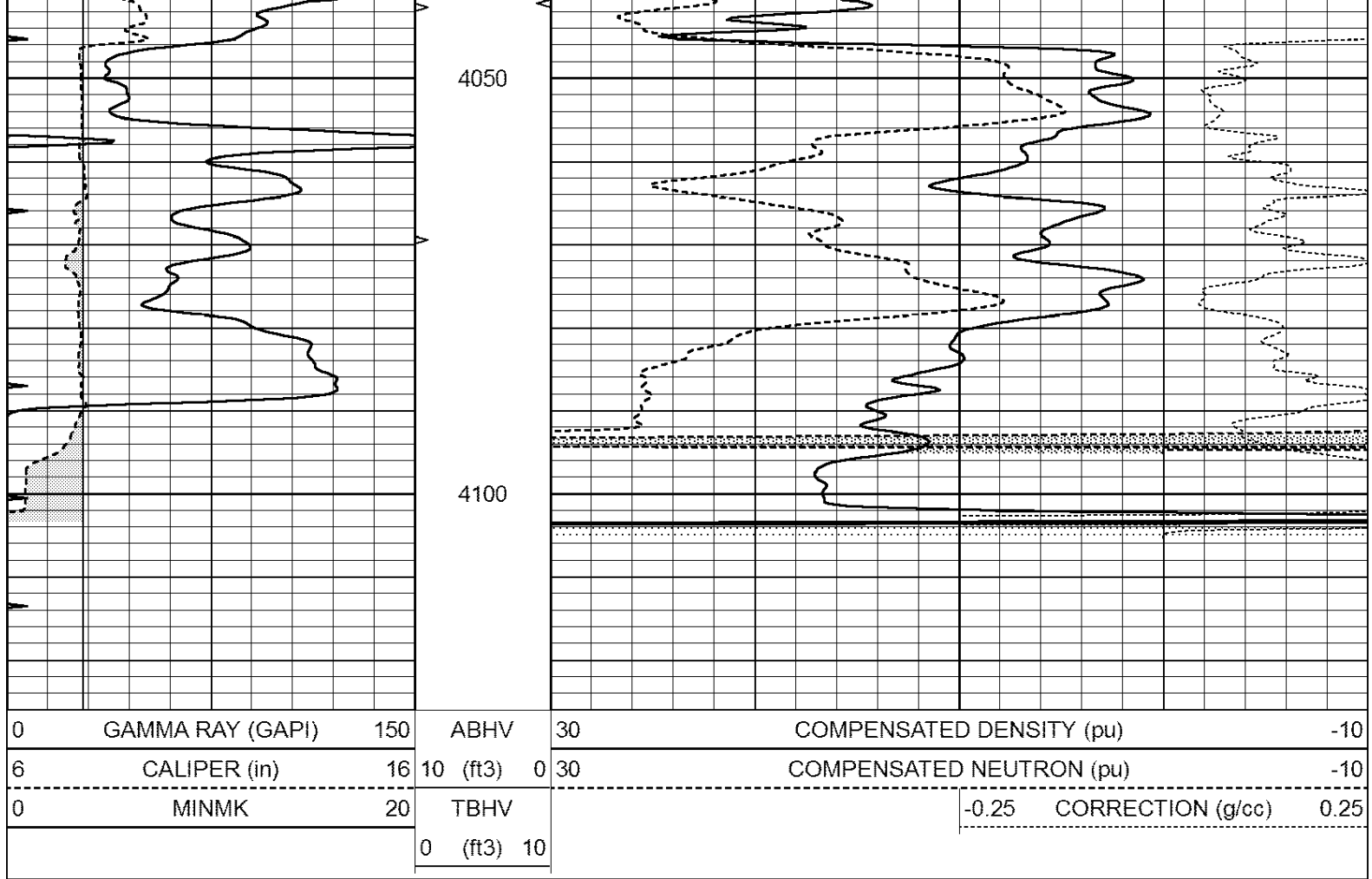


REPEAT SECTION

Database File: 24068ddn.db
Dataset Pathname: pass2.1
Presentation Format: den_neu
Dataset Creation: Tue Jul 29 00:19:57 2014 by Calc Open-Cased 090629
Charted by: Depth in Feet scaled 1:240

0	GAMMA RAY (GAPI)	150	ABHV	30	COMPENSATED DENSITY (pu)	-10
6	CALIPER (in)	16	10 (ft3) 0	30	COMPENSATED NEUTRON (pu)	-10
0	MINMK	20	TBHV		-0.25 CORRECTION (g/cc)	0.25
			0 (ft3) 10			





Calibration Report

Database File: 24068ddn.db
 Dataset Pathname: pass2.1
 Dataset Creation: Tue Jul 29 00:19:57 2014 by Calc Open-Cased 090629

Dual Induction Calibration Report

Serial-Model: PROBE8-DILG
 Surface Cal Performed: Sun Jul 27 18:19:21 2014
 Downhole Cal Performed: Mon Jul 28 11:08:27 2008
 After Survey Verification Performed: Mon Jul 28 11:08:27 2008

Surface Calibration

Loop:	Readings				References		Results	
	Air	Loop	V		Air	Loop	m	b
Deep	0.015	0.648	V	0.000	400.000	mmho/m	630.000	-6.000
Medium	0.029	0.796	V	0.000	464.000	mmho/m	590.000	-16.000
Internal:	Zero	Cal		Zero	Cal		m	b
Deep	0.017	0.657	V	0.000	400.000	mmho/m	625.153	-10.619
Medium	0.016	0.757	V	0.000	464.000	mmho/m	625.992	-9.739

Downhole Calibration

	Readings				References		Results	
	Zero	Cal	V		Zero	Cal	m'	b'
Deep	0.000	0.000	mmho/m	2.011	405.777	mmho/m	1.000	0.000
Medium	0.000	0.000	mmho/m	7.590	503.393	mmho/m	1.000	0.000
LL3		7.500	V		1500.000	Ohm-m		
		0.000	V		20.000	Ohm-m		

After Survey Verification								
	Readings			Targets			Results	
	Zero	Cal		Zero	Cal		m'	b'
Deep	0.000	0.000	mmho/m	0.000	0.000	mmho/m	0.000	0.000
Medium	0.000	0.000	mmho/m	0.000	0.000	mmho/m	0.000	0.000
LL3		1.000	Ohm-m		1.000	Ohm-m		
		0.000	Ohm-m		0.000	Ohm-m		
		1.000	mmho-m		1.000	mmho-m		

Compensated Density Calibration Report

Serial-Model:	GEAR3-GEARHART
Source / Verifier:	143 / 143
Master Calibration Performed:	Fri Jan 04 15:48:16 2013
Before Survey Verification Performed:	
After Survey Verification Performed:	

Master Calibration						
	Density		Far Detector	Near Detector		
	Magnesium	1.710	g/cc	935.36	501.55	cps
Aluminum	2.580	g/cc	209.32	357.01	cps	
Spine Angle = 77.21			Density/Spine Ratio = 0.567			
	Size		Reading			
Small Ring	8.00	in	4.29	V		
Large Ring	14.00	in	6.24	V		

Before Survey Verification						
	Target		Measured			
		g/cc				g/cc
		g/cc				g/cc
		g/cc				g/cc

After Survey Verification						
	Target		Measured			
		g/cc				g/cc
		g/cc				g/cc
		g/cc				g/cc

Compensated Neutron Calibration Report

Serial Number:	6I
Tool Model:	G

CALIBRATION						
Detector	Readings		Target	Normalization		
Short Space	1.00	cps	1.00	cps	1.0000	
Long Space	1.00	cps	1.00	cps	1.0000	

PRE-SURVEY VERIFICATION						
	Detector	Readings	Measured	Target		
1)	Short Space	cps				
	Long Space	cps	pu			pu

2)	Short Space Long Space	cps cps	pu
3)	Short Space Long Space	cps cps	pu

POST-SURVEY VERIFICATION

	Detector	Readings	Measured	Target
1)	Short Space Long Space	cps cps	pu	pu
2)	Short Space Long Space	cps cps	pu	pu
3)	Short Space Long Space	cps cps	pu	pu

Gamma Ray Calibration Report

Serial Number:	GR6	
Tool Model:	OPEN	
Performed:	Sun Jul 27 22:13:15 2014	
Calibrator Value:	150.0	GAPI
Background Reading:	0.0	cps
Calibrator Reading:	276.0	cps
Sensitivity:	0.7500	GAPI/cps