



**COMPLETION
& PRODUCTION
SERVICES CO.**

**MICRO
LOG**

Company ETERNITY EXPLORATION, LLC.
Well WERTH FARMS #1-12
Field CUSTER
County SHERIDAN
State KANSAS

Company ETERNITY EXPLORATION, LLC.
Well WERTH FARMS #1-12
Field CUSTER
County SHERIDAN State KANSAS

Location: API # : 15-179-21367-0000
330' FSL & 1650' FWL
SW - SE - SW
SEC 12 TWP 10S RGE 26W
Permanent Datum GROUND LEVEL Elevation 2589
Log Measured From KELLY BUSHING 5' A.G.L.
Drilling Measured From KELLY BUSHING
Other Services
CDL/CNL
DIL
Elevation
K.B. 2594
D.F. 2592
G.L. 2589

Date	7/28/14		
Run Number	TWO		
Depth Driller	4120		
Depth Logger	4120		
Bottom Logged Interval	4118		
Top Log Interval	3500		
Casing Driller	8 5/8" @ 219		
Casing Logger	216		
Bit Size	7 7/8"		
Type Fluid in Hole	CHEMICAL MUD	CHLORIDES 3000 PPM	
Density / Viscosity	9.368		
pH / Fluid Loss	9.5/8.8		
Source of Sample	FLOWLINE		
Rm @ Meas. Temp	.70 @ 90F		
Rmt @ Meas. Temp	.52 @ 90F		
Rmc @ Meas. Temp	.84 @ 90F		
Source of Rmf / Rmc	MEASUREMENT		
Rm @ BHT	.53 @ 117F		
Time Circulation Stopped	2 HOURS		
Time Logger on Bottom			
Maximum Recorded Temperature	117F		
Equipment Number	4010		
Location	HAYS, KANSAS		
Recorded By	JASON CAPPELLUCCI		
Witnessed By	SCOTT ALBERG		

<<< Fold Here >>>

All interpretations are opinions based on inferences from electrical or other measurements and we cannot and do not guarantee the accuracy or correctness of any interpretation, and we shall not, except in the case of gross or willful negligence on our part, be liable or responsible for any loss, costs, damages, or expenses incurred or sustained by anyone resulting from any interpretation made by any of our officers, agents or employees. These interpretations are also subject to our general terms and conditions set out in our current Price Schedule.

Comments

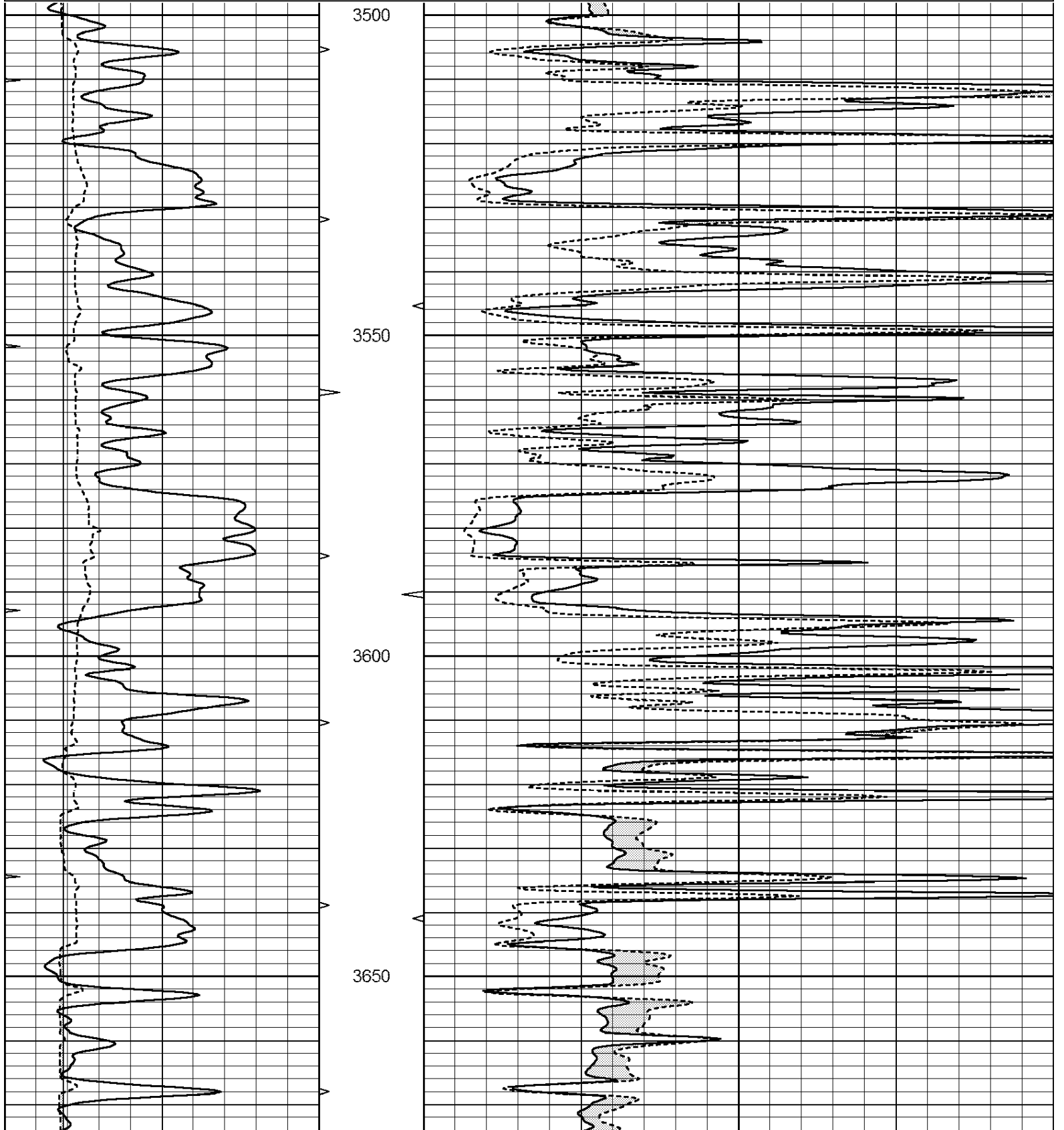
THANK YOU FOR USING NABORS, HAYS, KS. (785) 628-6395
DIRECTIONS:
ST. PETER, KS. - ON RD. E GO 6 1/2 WEST - NORTH INTO

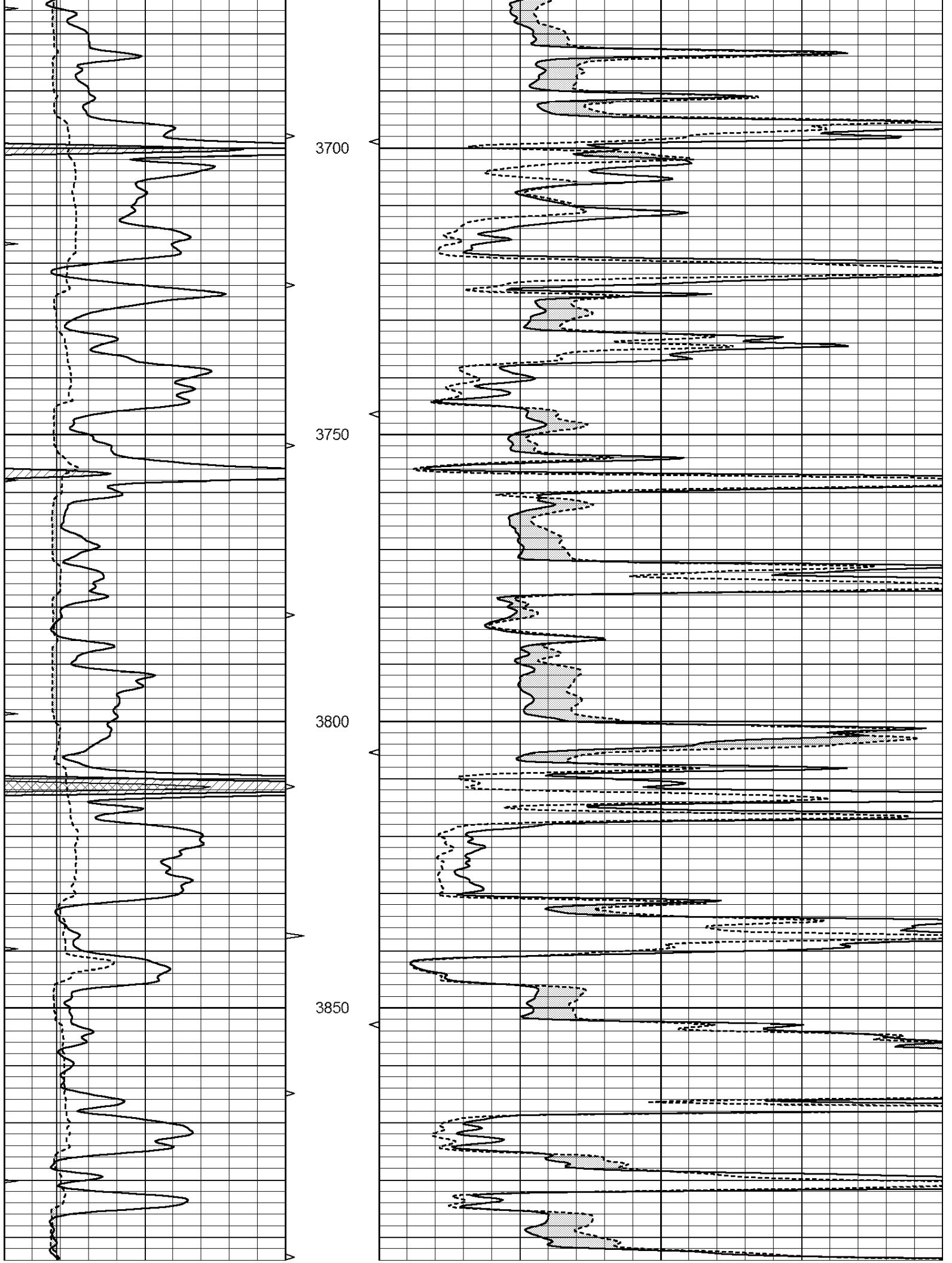


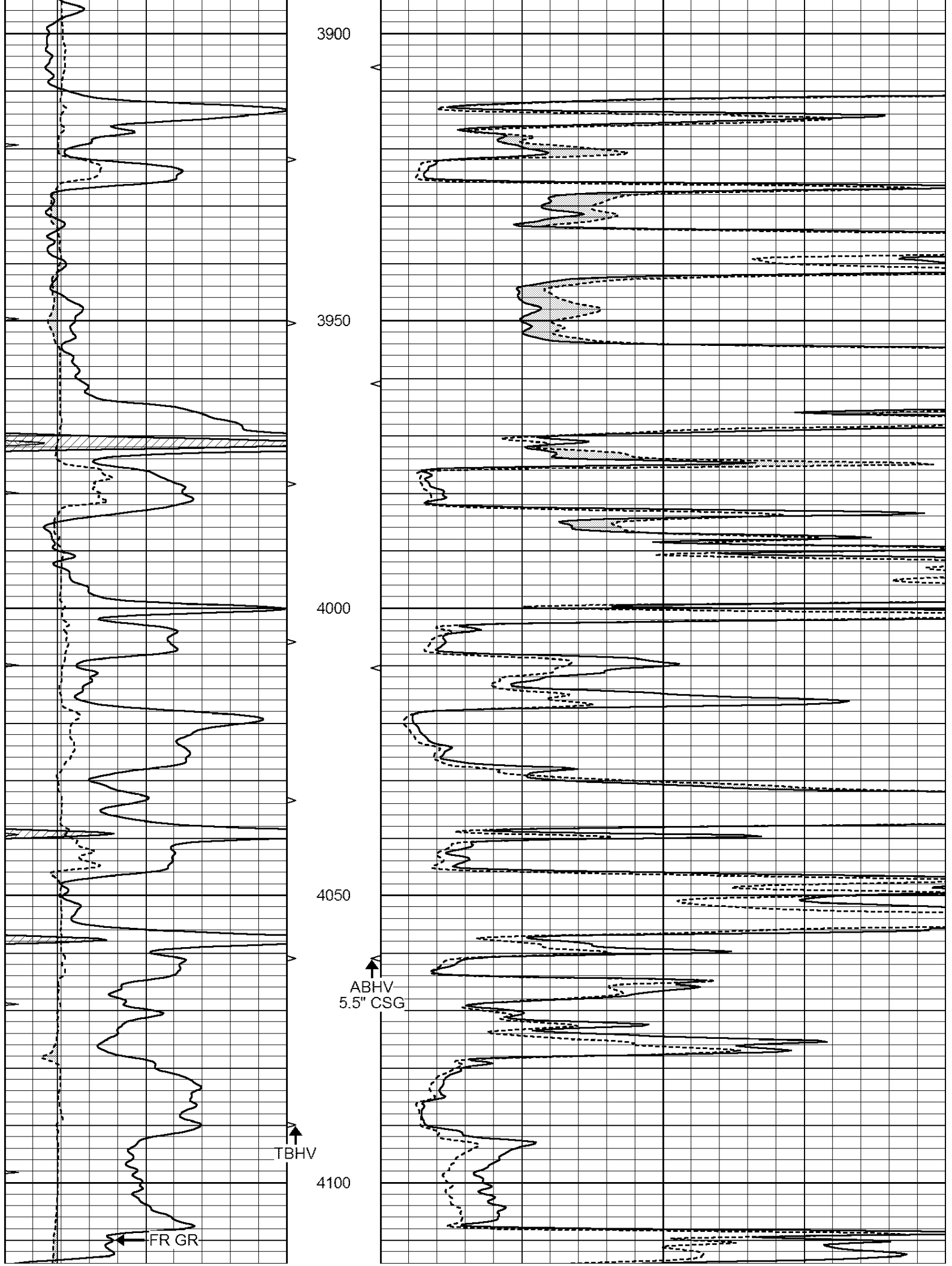
MAIN SECTION

Database File: 24068ddn.db
 Dataset Pathname: pass6.1
 Presentation Format: _micro
 Dataset Creation: Tue Jul 29 01:52:44 2014 by Calc Open-Cased 090629
 Charted by: Depth in Feet scaled 1:240

0	GAMMA RAY (GAPI)	150	ABHV	0	MEL1.5 (Ohm-m)	40
6	CALIPER (in)	16	10 (ft3)	0	MEL2.0 (Ohm-m)	40
0	MINMK	20	TBHV			
			0 (ft3)	10		







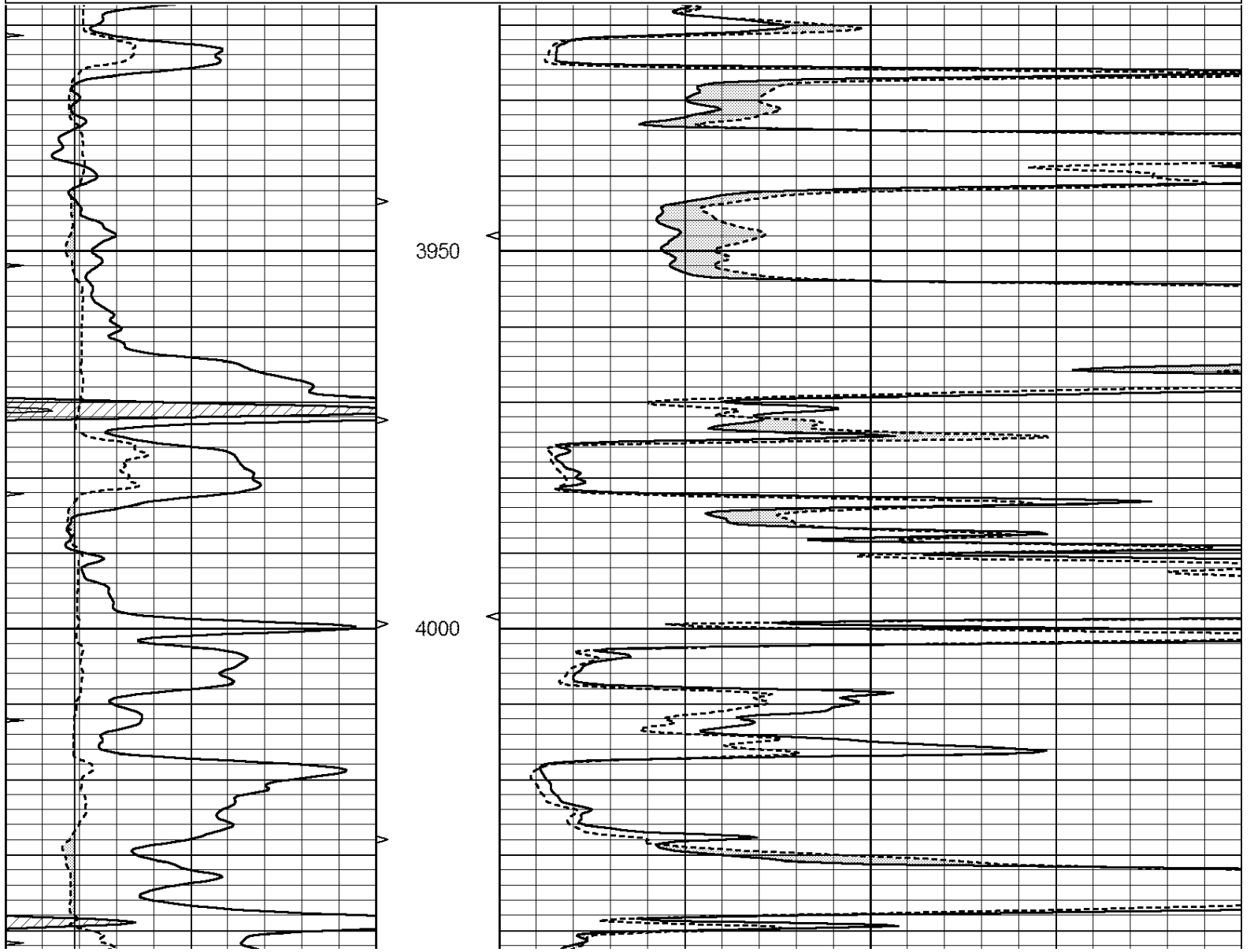
FR MELCAL		LTD 4120		FR MICRO		
0	GAMMA RAY (GAPI)	150	ABHV	0	MEL1.5 (Ohm-m)	40
6	CALIPER (in)	16	10 (ft3)	0	MEL2.0 (Ohm-m)	40
0	MINMK	20	TBHV			
			0 (ft3)	10		

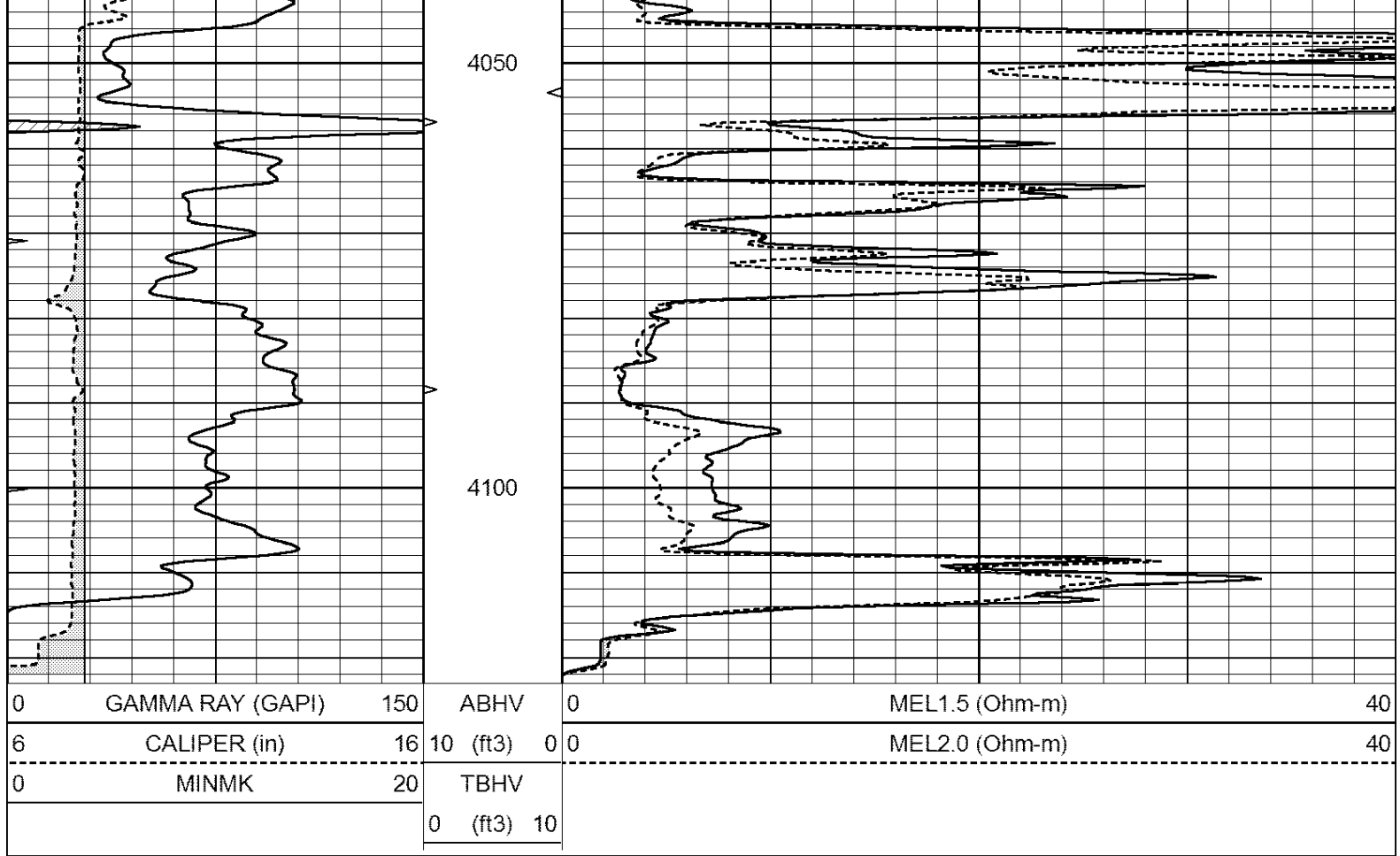


REPEAT SECTION

Database File: 24068ddn.db
 Dataset Pathname: pass5.1
 Presentation Format: _micro
 Dataset Creation: Tue Jul 29 01:51:20 2014 by Calc Open-Cased 090629
 Charted by: Depth in Feet scaled 1:240

0	GAMMA RAY (GAPI)	150	ABHV	0	MEL1.5 (Ohm-m)	40
6	CALIPER (in)	16	10 (ft3)	0	MEL2.0 (Ohm-m)	40
0	MINMK	20	TBHV			
			0 (ft3)	10		





Calibration Report

Database File: 24068ddn.db
 Dataset Pathname: pass5.1
 Dataset Creation: Tue Jul 29 01:51:20 2014 by Calc Open-Cased 090629

MICRO Calibration Report

Serial Number:	MICRO6	
Tool Model:	PROBE	
Performed:	Sun Jul 27 22:13:31 2014	
Caliper Calibration:	Gain=5.542	Offset=0.700
References	Low Cal	High Cal
Readings	8.000	14.000
	1.431	2.513
1.5" Calibration:	Gain=38.075	Offset=0.000
References	Low Cal	High Cal
Readings	0.000	20.000
	0.004	1.196
2" Calibration:	Gain=46.000	Offset=-0.300
References	Low Cal	High Cal
Readings	0.000	20.000
	0.006	0.913

Gamma Ray Calibration Report

Serial Number:	GR6
Tool Model:	OPEN
Performed:	Sun Jul 27 22:13:15 2014

Calibrator Value:	150.0	GAPI
Background Reading:	0.0	cps
Calibrator Reading:	276.0	cps
Sensitivity:	0.7500	GAPI/cps