



Pioneer Energy Services

Sonic Cement  
Bond Log

12-015-24014-00-00

Company **Hawkins Oil**  
Well **JW Smith 2-B**  
Field **Hunt- Hawkins**  
County **Butler** State **Kansas**

Location  
**2,310' FSL & 330' FWL  
NW/4 NW/4 SW/4**

Sec: **20** Twp: **28E** Rge: **4E**

Permanent Datum **Ground Level** Elevation **1277**  
Log Measured From **Kelly Bushing** 10 Ft. Above Perm. Datum  
Drilling Measured From **Kelly Bushing**

Other Services  
Fast Mast  
Elevation  
K.B. 1287  
D.F. 1277  
G.L. 1277

Run Number	One
Date Survey	7/28/2014
Date Cementing	7/25/2014
Type Cementing Operation	Primary
Depth Driller	2499
Depth Logger	2497
Logged Interval	2497 to Surface
Casing Driller	5.5 @ TD
Float Collar -- D.V. Tool	////
Squeeze Depth	////
Amount & Type Cement	////
Amount & Type Admix	////
Type Fluid In Hole	Water
Fluid Level	Full
Salinity PPM CL	////
Weight lb/gal -- Vis.	////
Approx. Logged Cement Top	Surface
Calculated Cement Top	////
Max. Hole Temperature	115
Tool No.	DBT 1-5
Spacing Recorded	3-5
Equipment -- Location	65 Pratt
Recorded By	Craig Bates
Witnessed By	Wayne Baker

<<< Fold Here >>>

All interpretations are opinions based on inferences from electrical or other measurements and we cannot and do not guarantee the accuracy or correctness of any interpretation, and we shall not, except in the case of gross or willful negligence on our part, be liable or responsible for any loss, costs, damages, or expenses incurred or sustained by anyone resulting from any interpretation made by any of our officers, agents or employees. These interpretations are also subject to our general terms and conditions set out in our current Price Schedule.

Comments

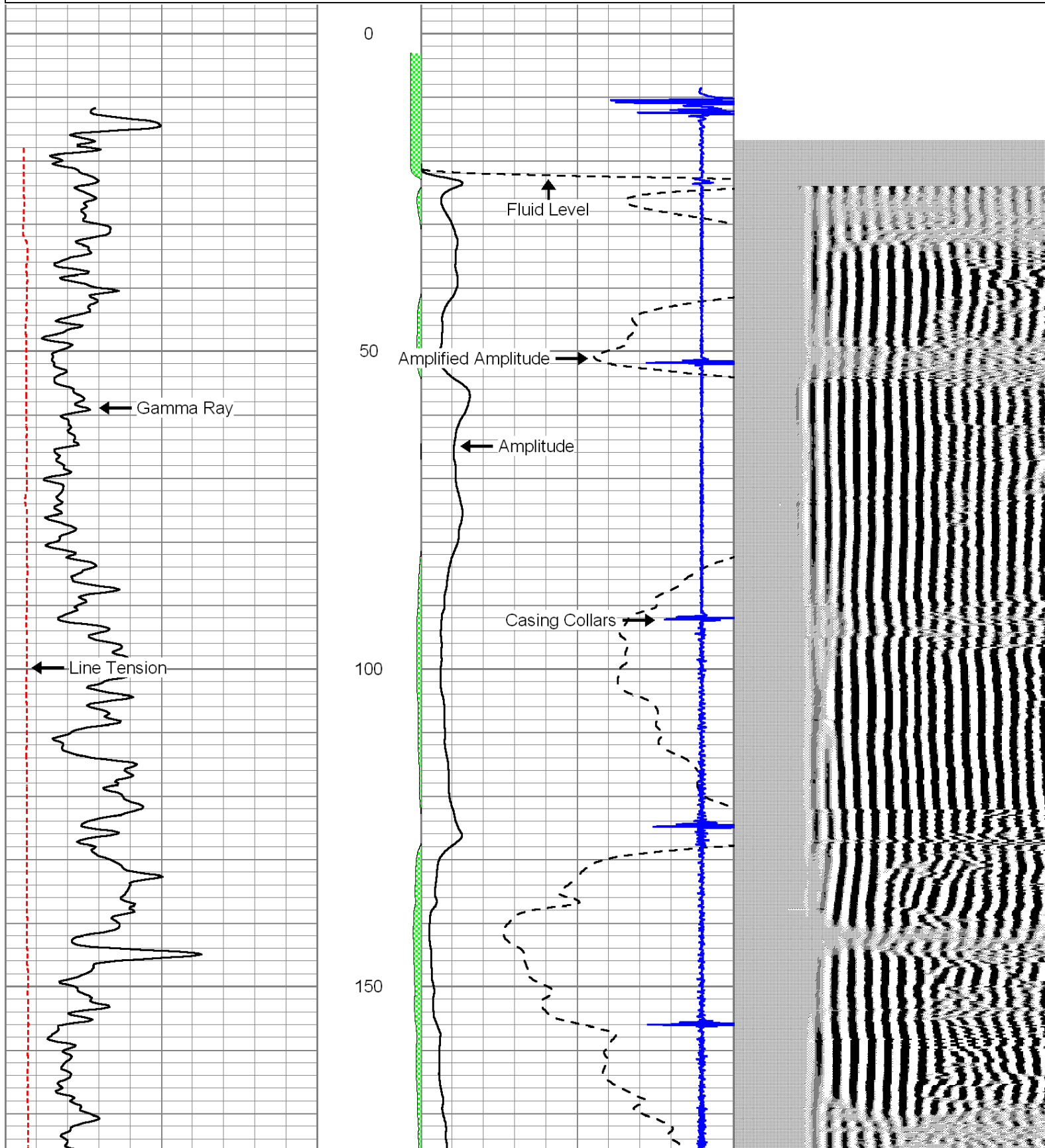
Thank you for using Pioneer Energy Services  
(620) 672-8300  
Augusta, Ks  
6.25 S to sw 163Rd 2.5W Curve N&W to Sw diamond Rd 1 1/2 S  
E into

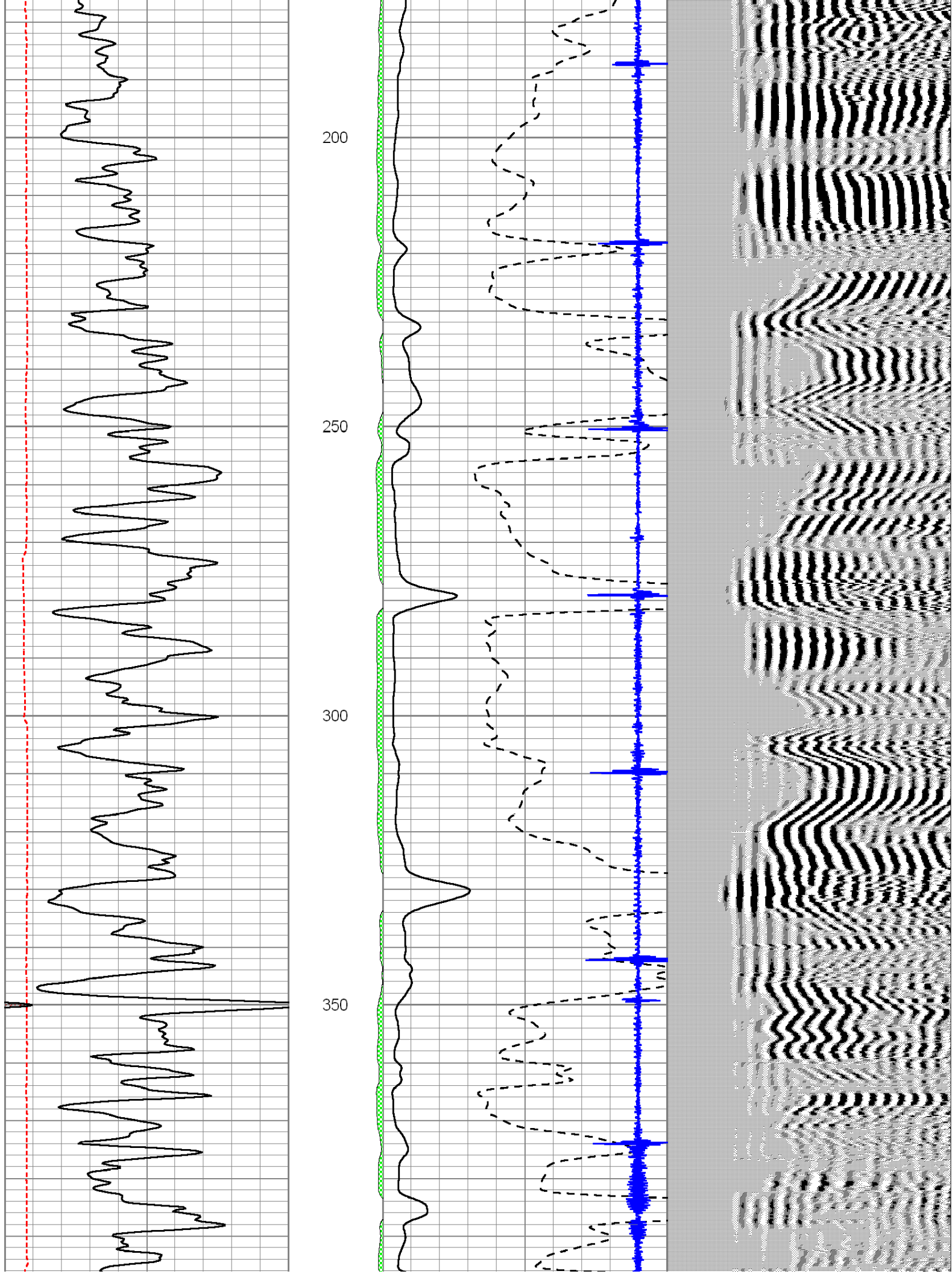


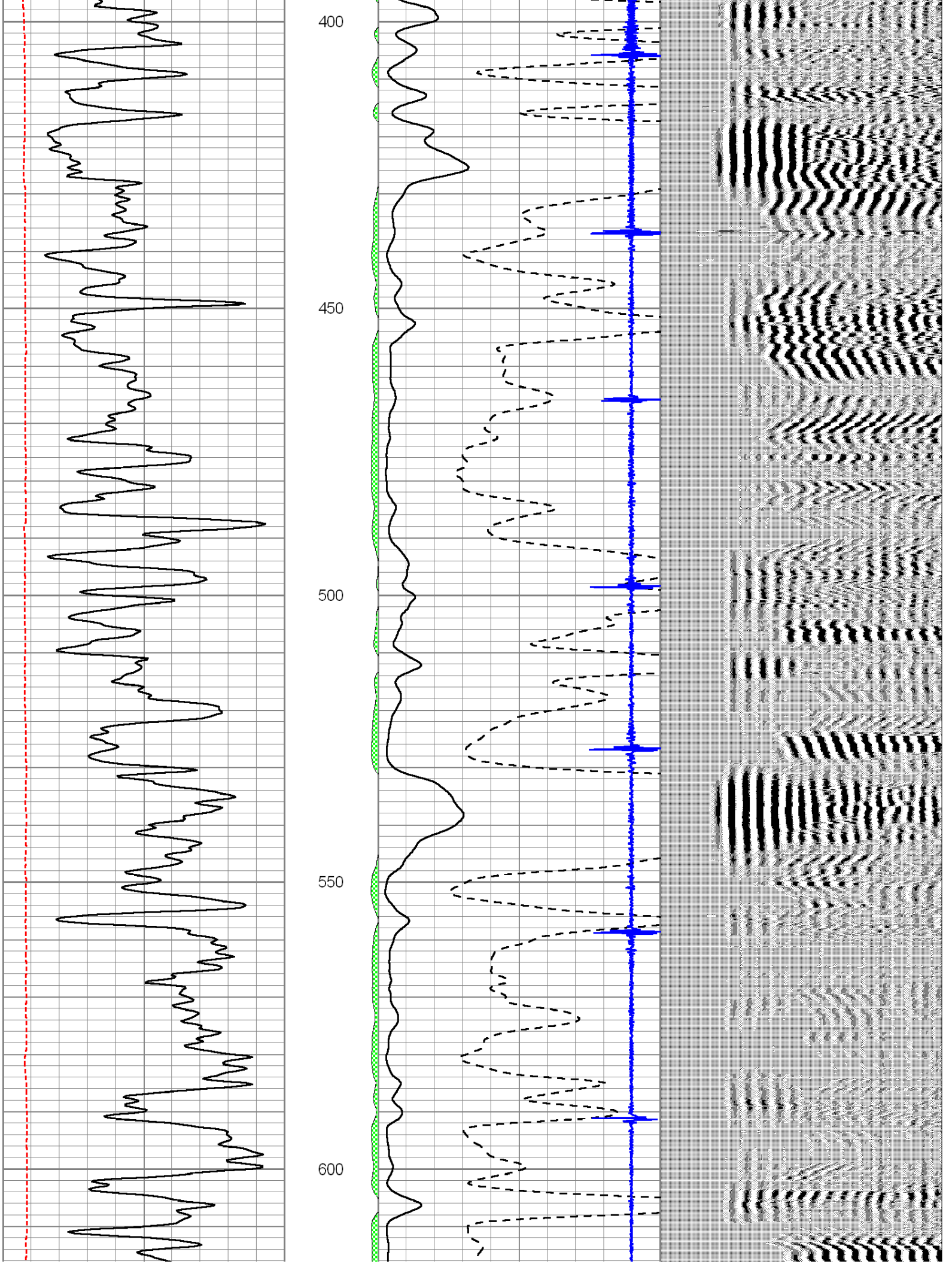
Main Pass

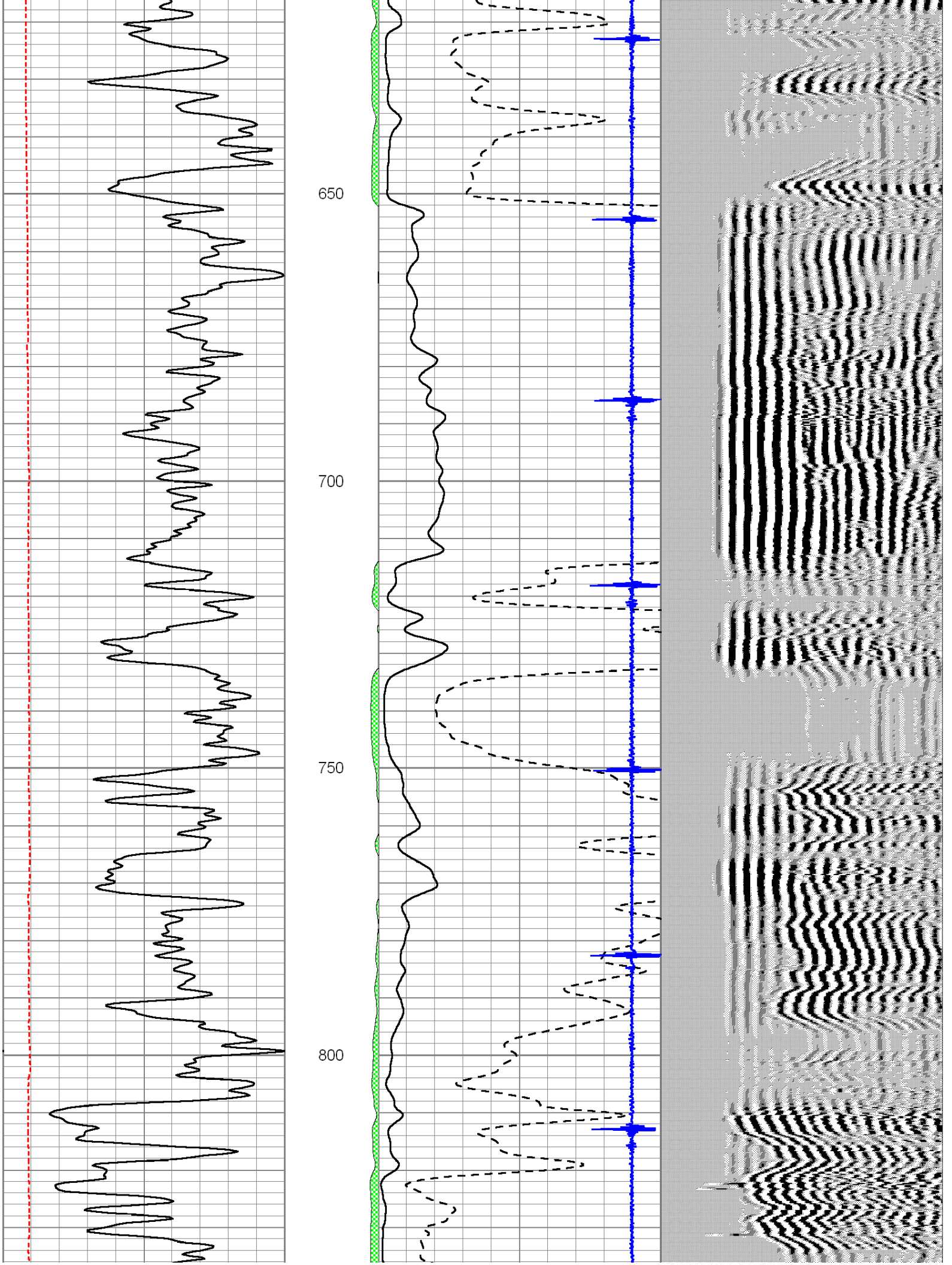
Database File: hawkins\_oil\_jw-smith-2-b.db  
 Dataset Pathname: grncbl/pass10  
 Presentation Format: cldig  
 Dataset Creation: Mon Jul 28 20:24:25 2014  
 Charted by: Depth in Feet scaled 1:240

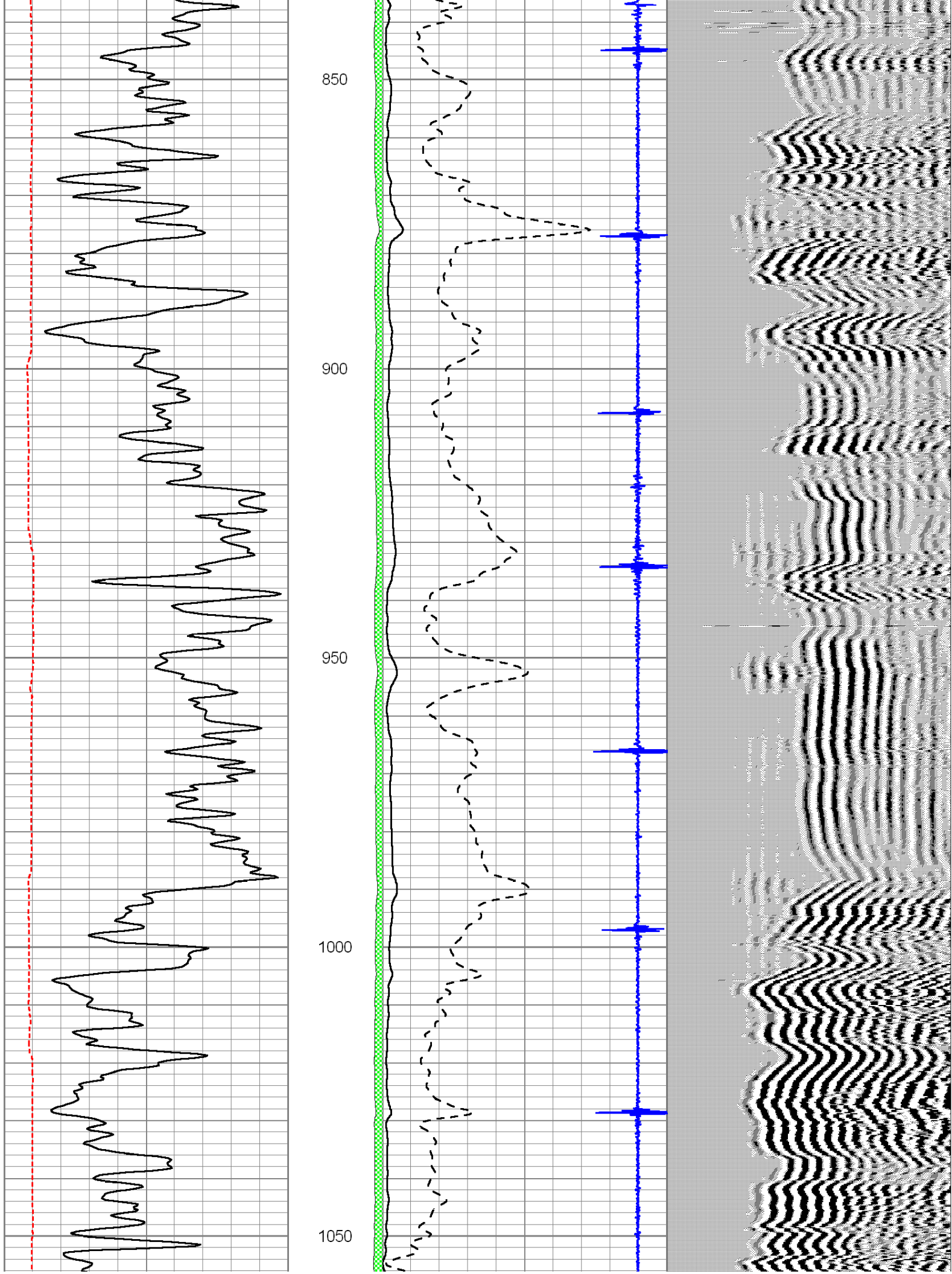
0	GR (GAPI)	150	AMP3	0	Amplitude (mV)	100	200	Variable Density	1200
0	Line Tension (lb)	5000	(mV)	0	Amplified Amplitude (mV)	10			
-----			-100	10	15	Collar Locator	-1.7		

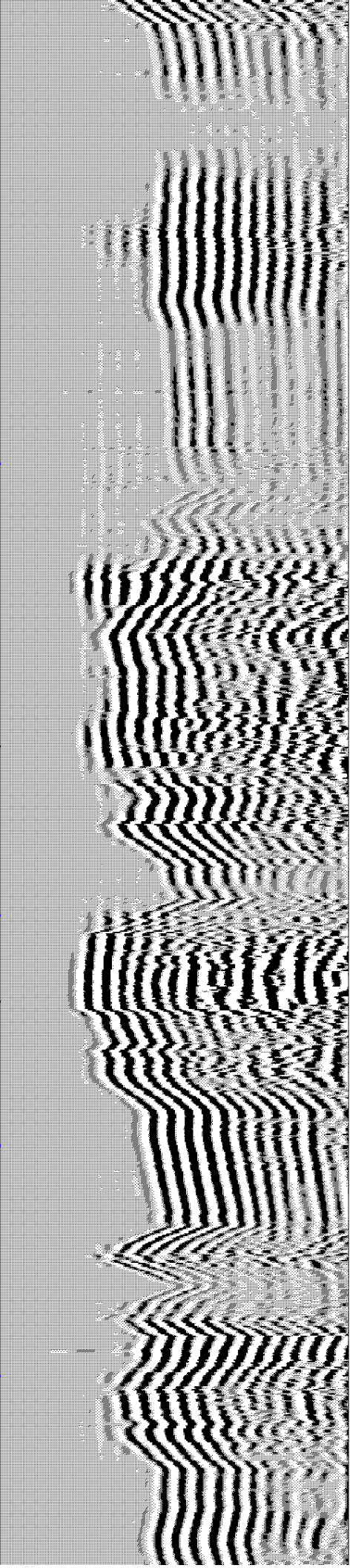
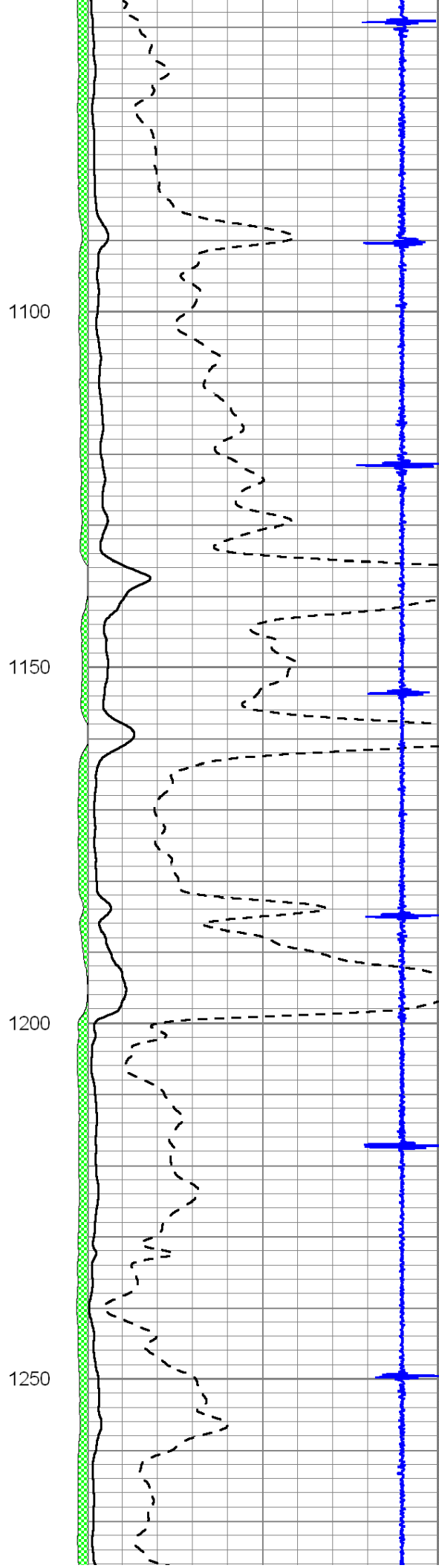
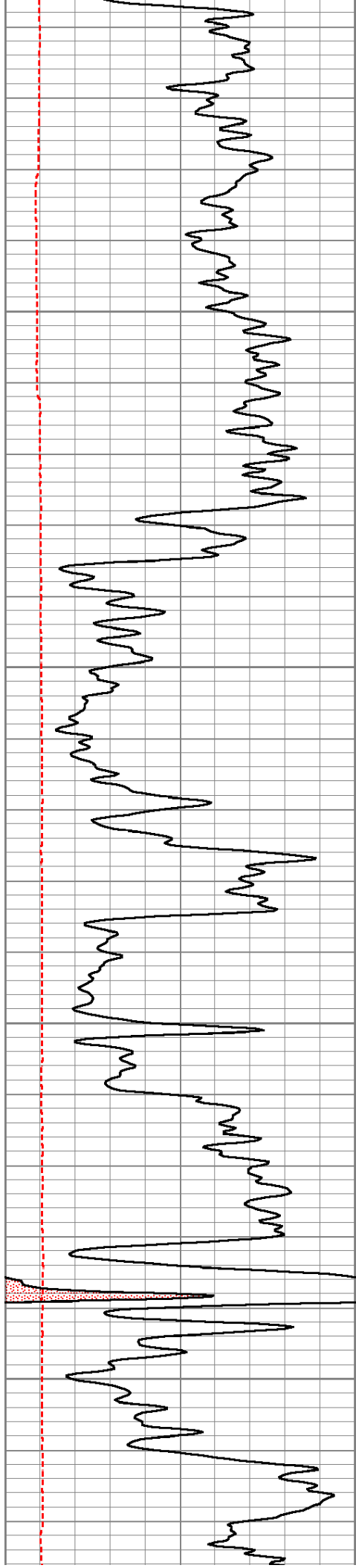


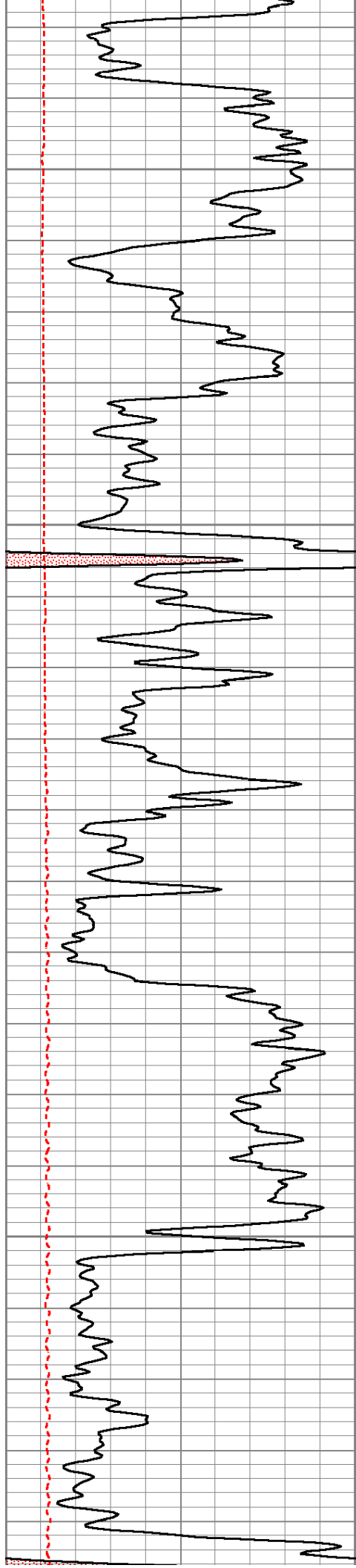










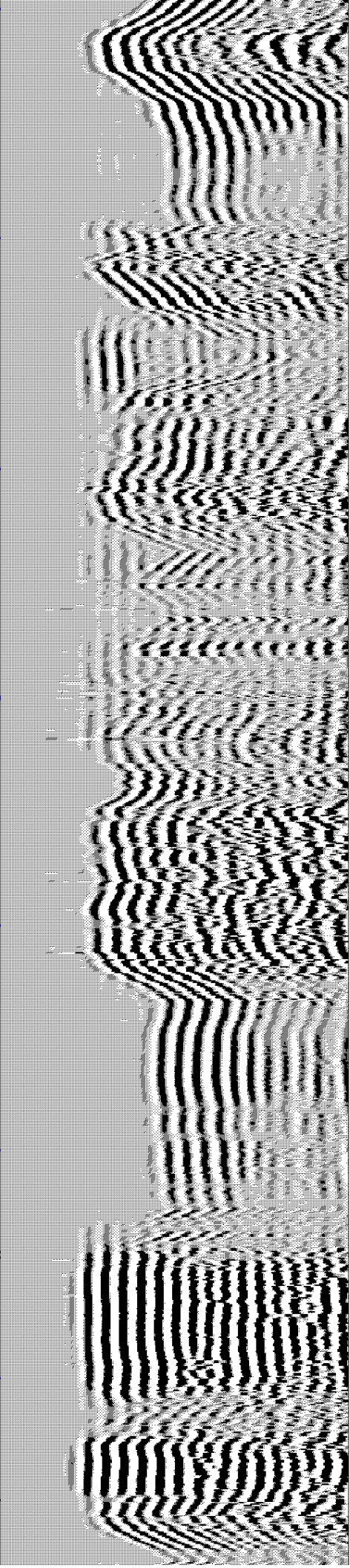
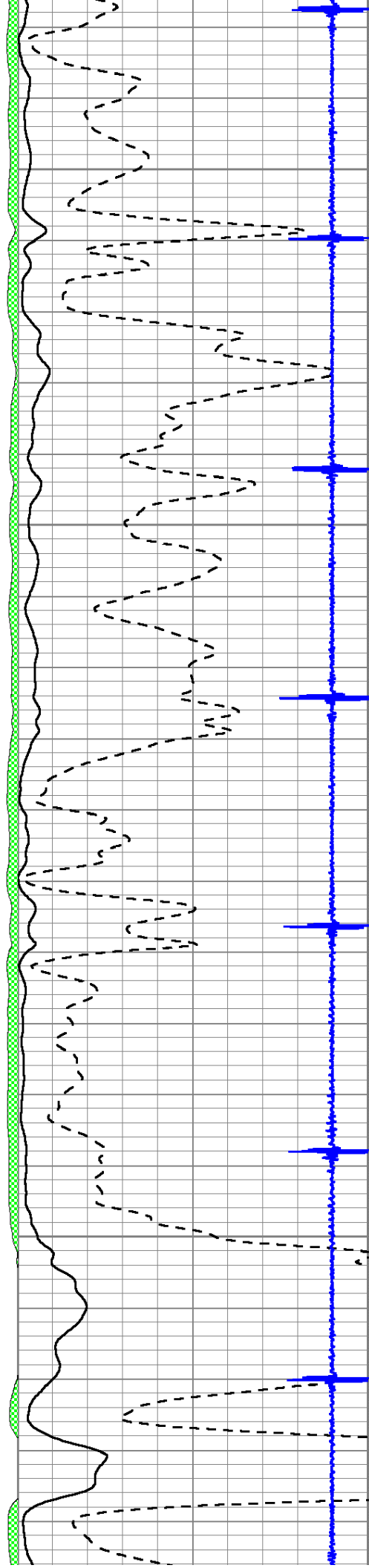


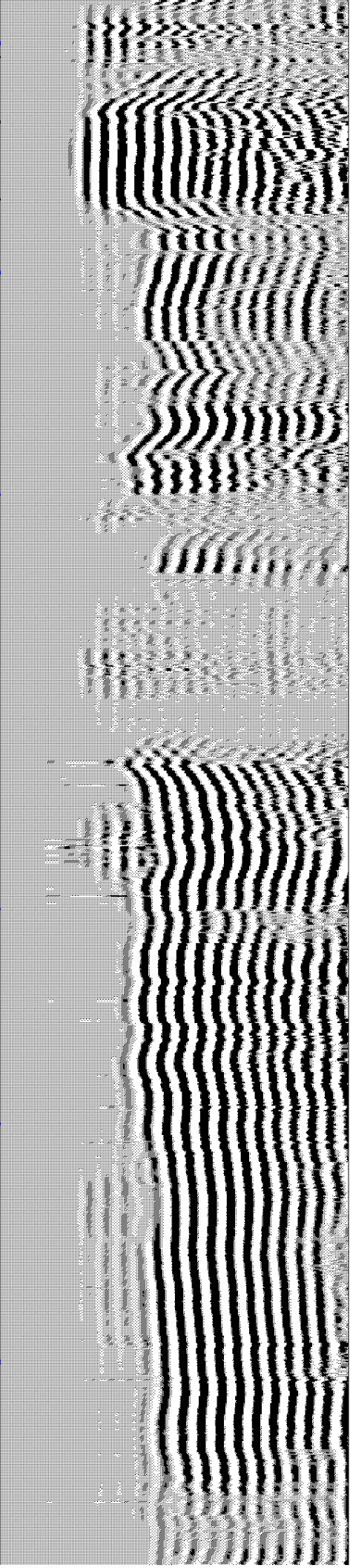
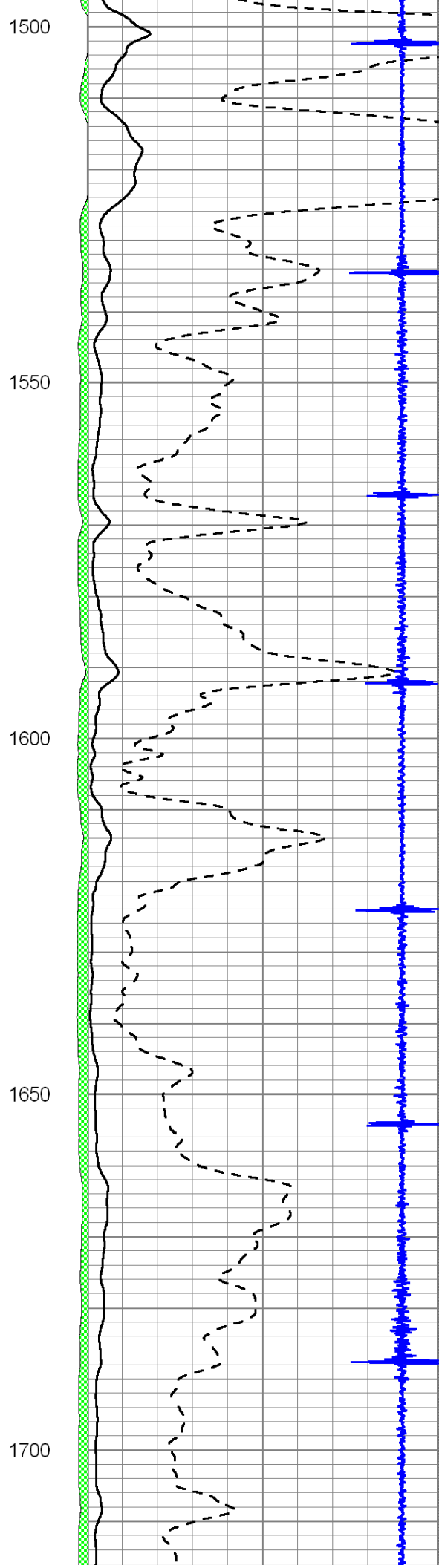
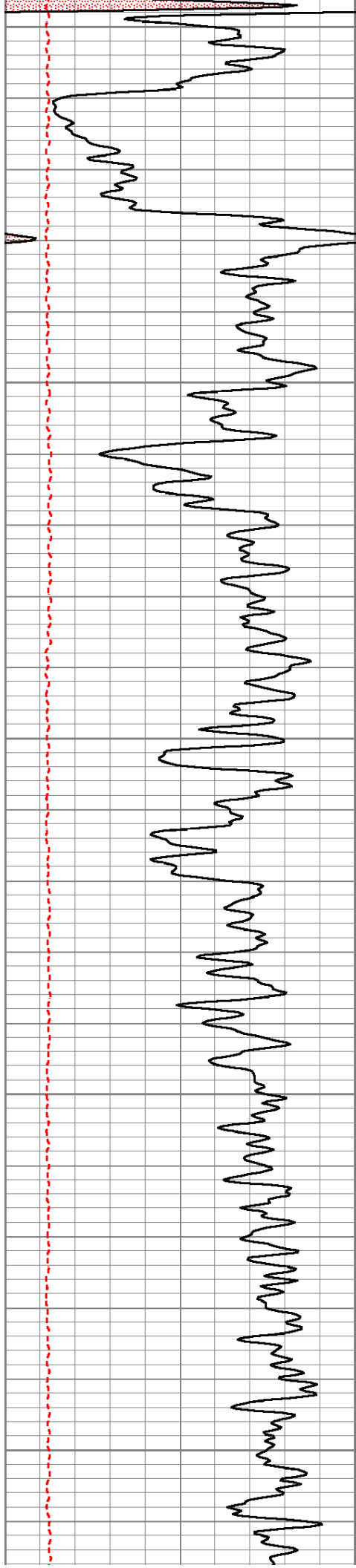
1300

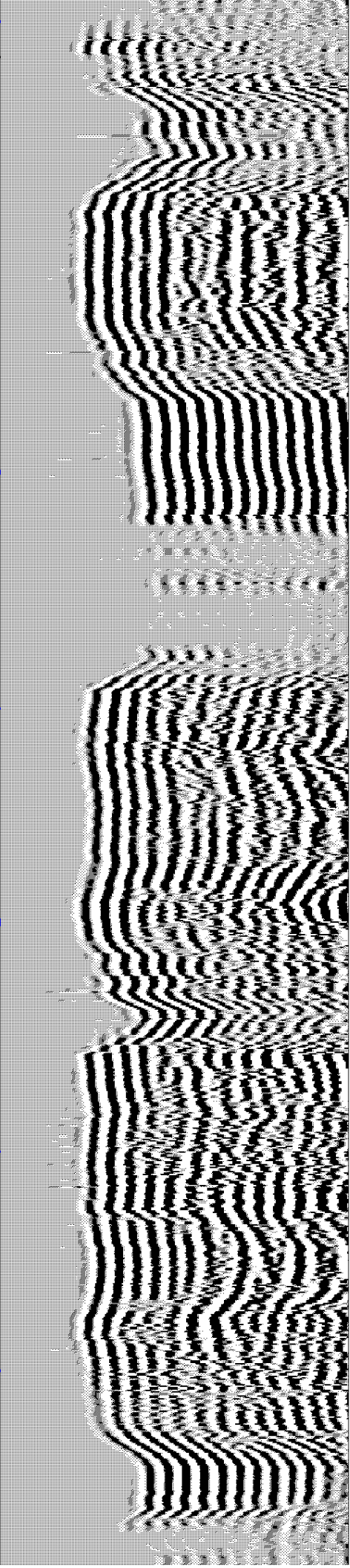
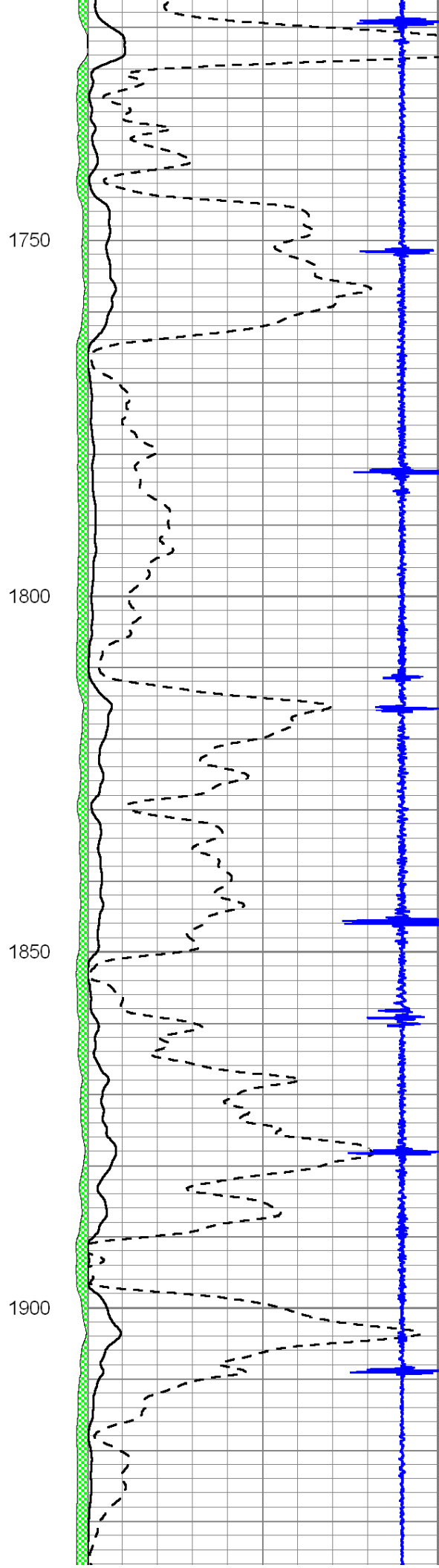
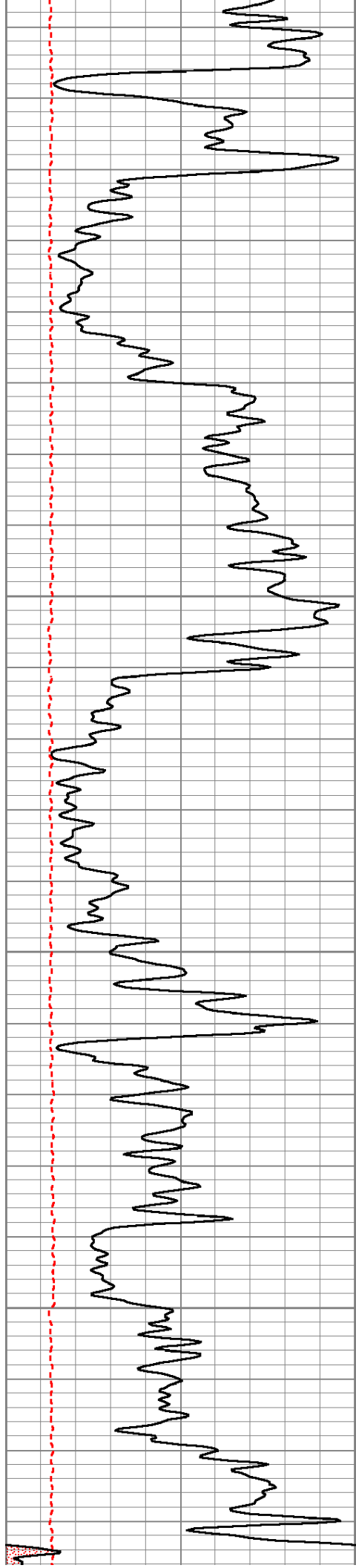
1350

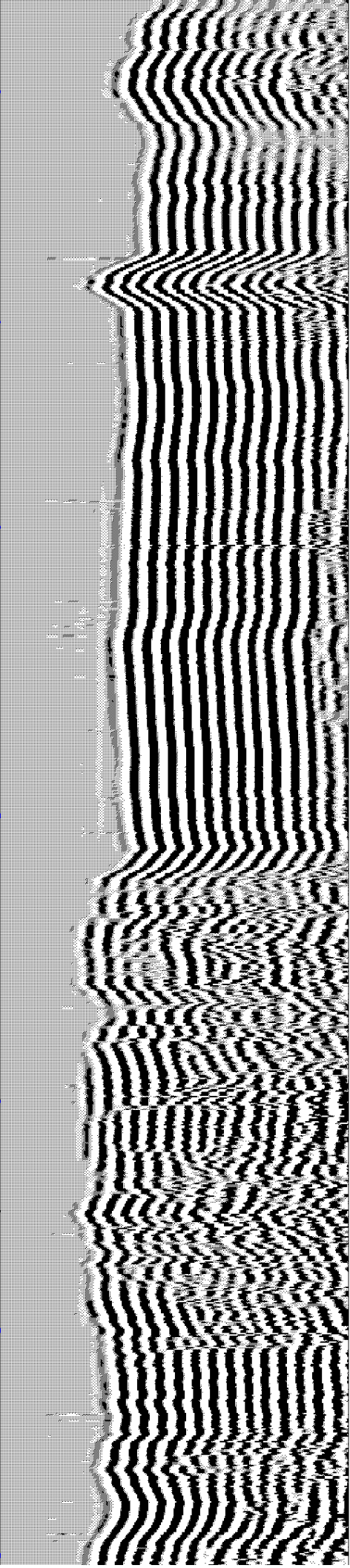
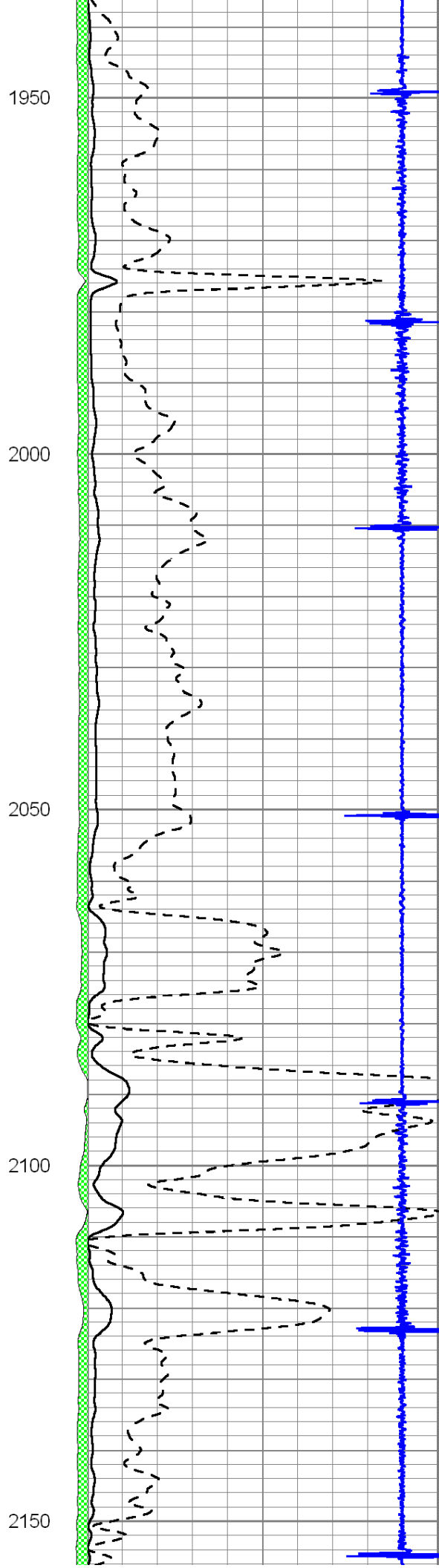
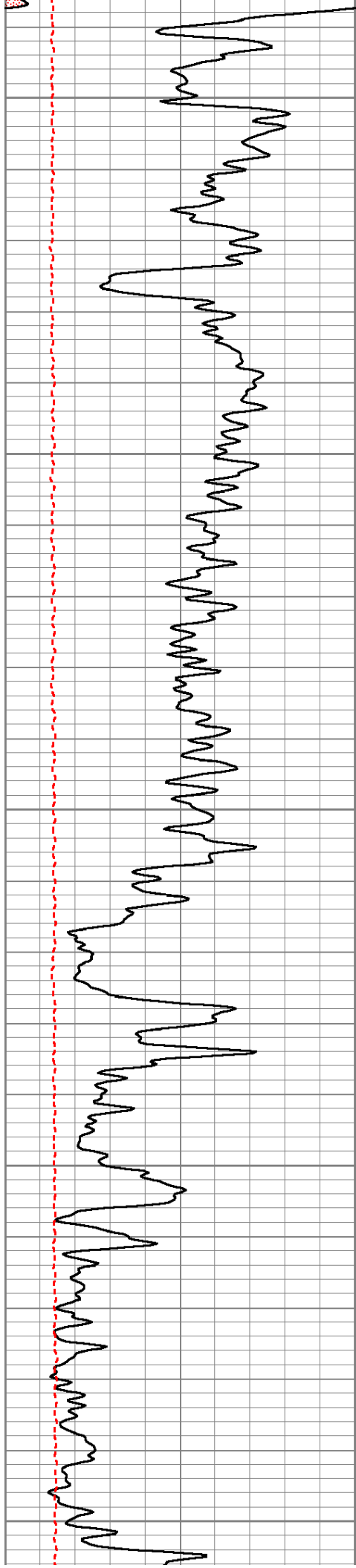
1400

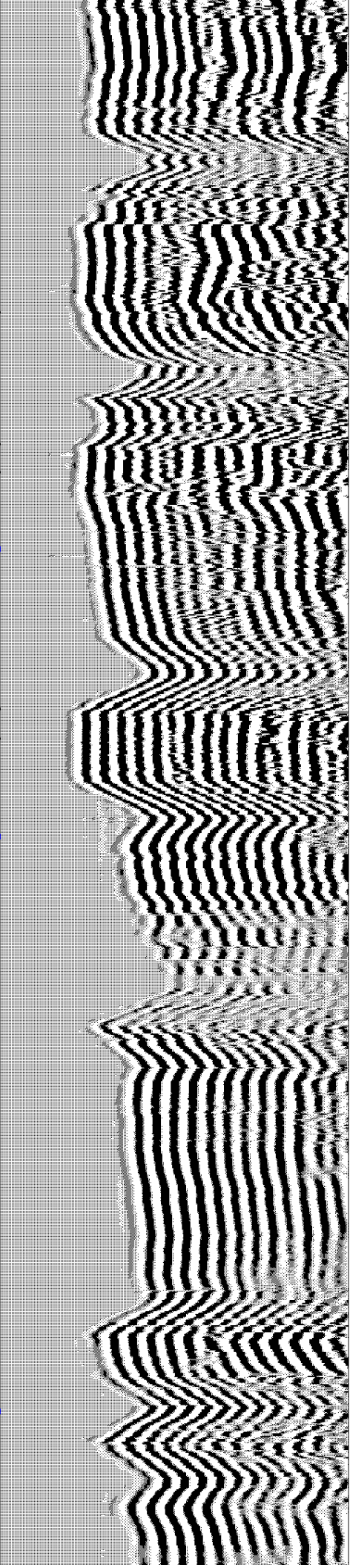
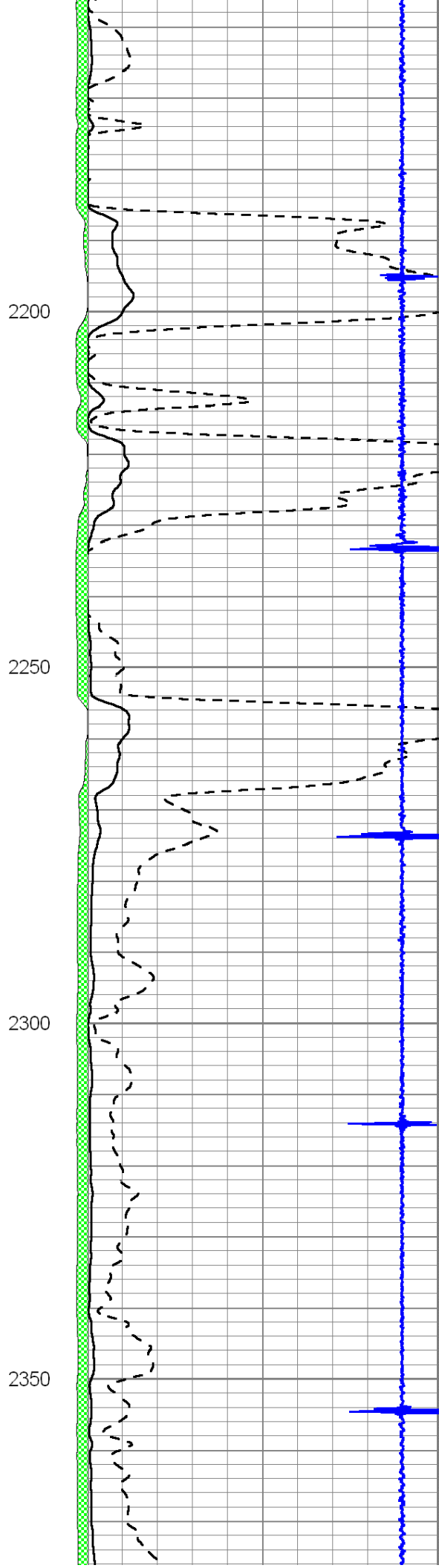
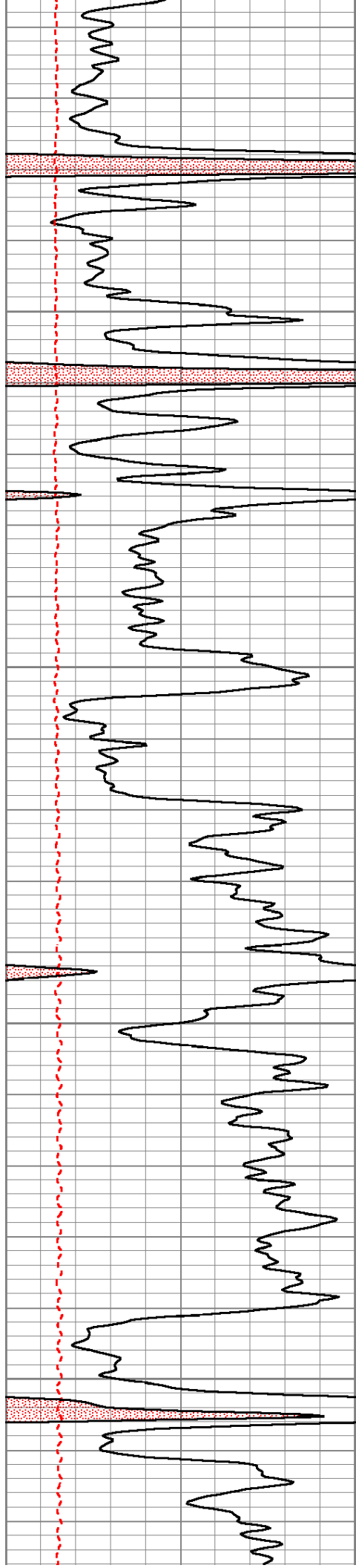
1450

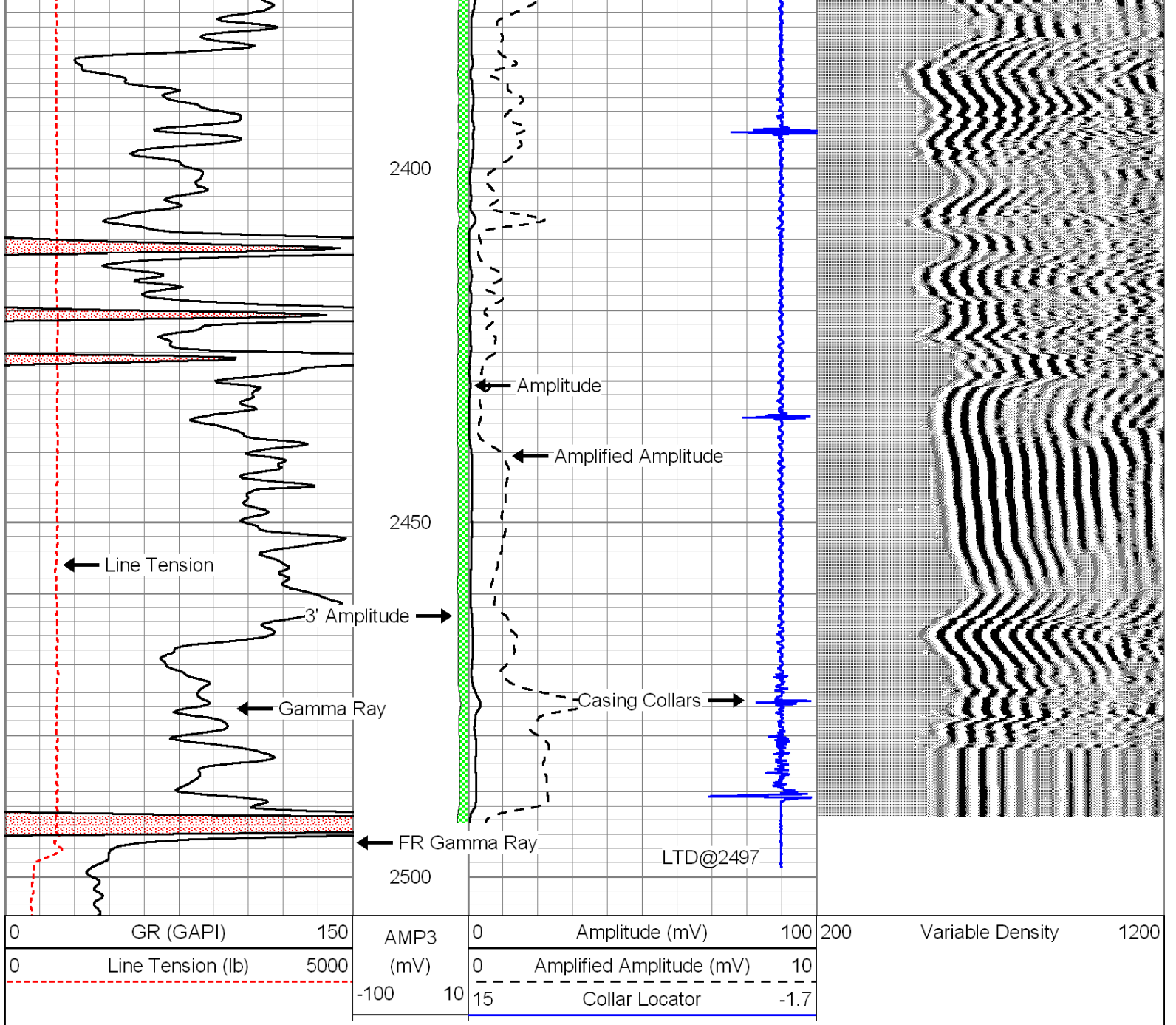











# Repeat Section

Database File: hawkins\_oil\_jw-smith-2-b.db  
 Dataset Pathname: grncbl/pass4  
 Presentation Format: cbl dig  
 Dataset Creation: Mon Jul 28 10:33:55 2014 by Log 7.0 B1  
 Charted by: Depth in Feet scaled 1:240

