



MIDWEST SURVEYS
LOGGING - PERFORATING - CONSULTING SERVICES
P.O. Box 68, Osawatomie, KS 66064
913 / 755 - 2128

GAMMA RAY / NEUTRON / CCL

File No.

Company

Well

Field

County

State

Location

Other Services

Sec. 26

Permian Datum

Log Measured From

Drilling Measured From

Date

Run Number

Depth Driller

Depth Logger

Bottom Logged Interval

Top Log Interval

Fluid Level

Type Fluid

Density / Viscosity

Salinity - PPM Cl

Max Recorded Temp

Estimated Cement Top

Equipment No.

Recorded By

Witnessed By

Location

Location

Location

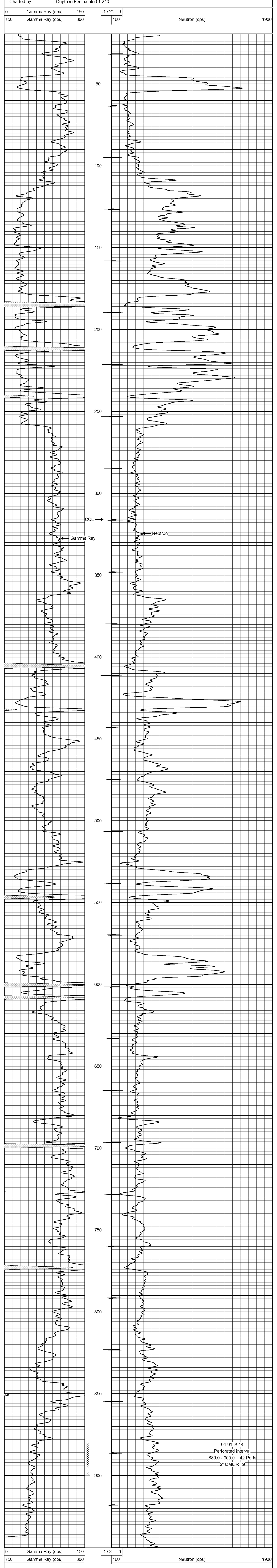
BORE-HOLE RECORD				CASING RECORD			
Run	No.	BIT	FROM	TO	SIZE	WGT.	FROM
One	9 875"	0.0	21.7	21.7	7.00"	17.0#	0.0
Two	3 875"	21.7	950.0	2875"	6.5 #	0.0	845.0

<<< Fold Here >>>

All interpretations are opinions based on inferences from electrical or other measurements and we cannot and do not guarantee the accuracy or correctness of any interpretation, and we shall not, except in the case of gross or willful negligence on our part, be liable or responsible for any loss, costs, damages, or expenses incurred or sustained by anyone resulting from any interpretation made by any of our officers, agents or employees. These interpretations are also subject to our general terms and conditions set out in our current Price Schedule.

Drilling Contractor :
Evans Energy & Development, Inc.

Database File: cannon6c.db
Dataset Pathname: pass1
Presentation Format: gr-n-ccl
Dataset Creation: Tue Apr 01 08:59:26 2014 by Log SCH 111116
Charted by: Depth in Feet scaled 1:240



04-01-2014
Perforated Interval
880.0 - 900.0 42 Perfs
2" DML RTG