



MIDWEST SURVEYS
 LOGGING - PERFORATING - CONSULTING SERVICES
 P.O. Box 68, Osawatomie, KS 66064
 913 / 755 - 2128

GAMMA RAY / NEUTRON / CCL

File No. Company **ST Petroleum, Inc.**
 Well **Thomas "B" No. 1-9**

Field **Longanecker - Southeast**
 County **Johnson** State **Kansas**

Location **3990' FSL & 1671' FEL**
SW-SE-NW-NE

Other Services **Perforate**

Sec. 31 Type 148 Edge 22e
 Permian Datum GL Elevation N/A
 Log Measured From GL
 Drilling Measured From GL

Date 03-11-2014
 Run Number One
 Depth Driller 1020.0
 Depth Logger 971.5
 Bottom Logged Interval 970.5
 Top Log Interval 20.0
 Fluid Level Full

Type Fluid **Water**
 Density / Viscosity NA
 Salinity - PPM Cl NA
 Max. Recorded Temp NA
 Estimated Cement Top 0.0
 Equipment No. Location
 Recorded By Steve Jindrich
 Witnessed By Rick Singelen

BORE-HOLE RECORD
 RUN No. BIT FROM TO
 One 9.875' 0.0 23.0
 Two 5.625' 23.0 1020.0

CASING RECORD
 WGT. SIZE FROM TO
 17.0# 7.00" 0.0 23.0
 6.5# 2.875" 0.0 986.0
 Set At 983.0

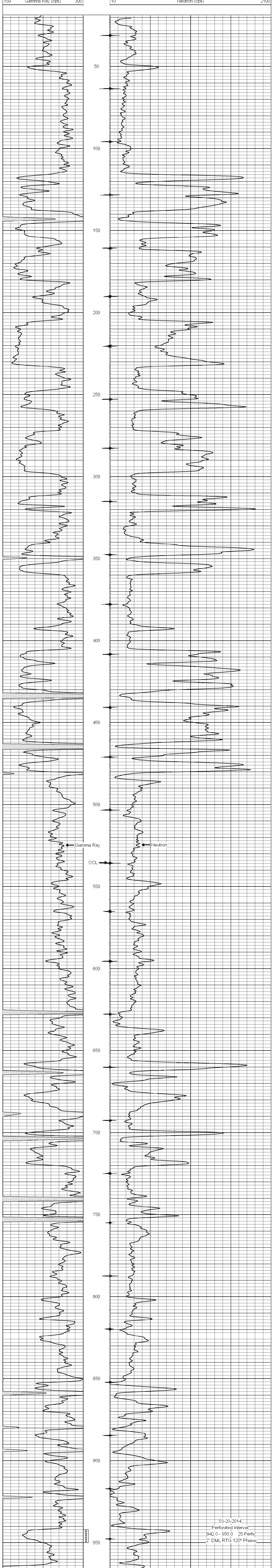
<<< Fold Here >>>

All interpretations are opinions based on inferences from electrical or other measurements and we cannot and do not guarantee the accuracy or correctness of any interpretation, and we shall not, except in the case of gross or willful negligence on our part, be liable or responsible for any loss, costs, damages, or expenses incurred or sustained by anyone resulting from any interpretation made by any of our officers, agents or employees. These interpretations are also subject to our general terms and conditions set out in our current Price Schedule.

Comments

Drilling Contractor :
Town Oilfield Services, Inc.

Database File: thomas9ib.db
 Dataset Pathname: pass1
 Presentation Format: gr-n-ccl
 Dataset Creation: Tue Mar 11 11:02:54 2014 by Log SCH 111116
 Charted by: Depth in Feet scaled 1:240



03-20-2014
 Perforated Interval
 942.0 - 950.0 25 Perfs
 2" DML RTG 120° Phases